

1 **Explaining the counter-intuitive effectiveness of trophectoderm biopsy for PGT-A using**
2 **computational modelling**

3

4 Benjamin M Skinner^{1*}, Manuel Viotti^{2,3}, International Registry of Mosaic Embryo Transfers
5 (IRMET), Darren K Griffin⁵ and Peter JI Ellis^{5*}

6

7 1. School of Life Sciences, University of Essex, Wivenhoe Park, Colchester, CO4 3SQ, UK

8 2. KindLabs, Kindbody, New York, NY 10011, USA

9 3. Zouves Foundation for Reproductive Medicine, Foster City, CA 94404, USA

10 4. International Registry of Mosaic Embryo Transfers (IRMET), New York, NY 1011, USA

11 5. School of Biosciences, University of Kent, Giles Lane, Canterbury CT2 7NH, UK

12 * Corresponding authors

13

14 Keywords: mosaicism, aneuploidy, fertility, preimplantation genetics

15 **Abstract**

16 Preimplantation genetic testing for aneuploidy (PGT-A) is one of the most controversial
17 topics in reproductive medicine, with disagreements over the apparently contradictory
18 results of randomised controlled trials, non-selection trials and outcome data analyses.
19 Data from live birth outcomes largely suggest that fully euploid biopsies are associated with
20 positive live birth rates, while fully aneuploid biopsies are not. However, the possible
21 confounding effects of chromosomal mosaicism (when either the whole embryo, the biopsy
22 result (or both) contain an admixture of euploid and aneuploid cells) is frequently cited as a
23 reason why PGT-A should not be performed. Previous computer models have indicated that
24 a mosaic result is a poor indicator of the level of mosaicism of the rest of the embryo, and it
25 is thus unwise to use mosaic PGT-A results when selecting embryos for transfer. Here we
26 developed a computational model, *tessera*, to create virtual embryos for biopsy, allowing us
27 to vary the number of cells in the simulated embryo and biopsy, the proportion of aneuploid
28 cells and the degree of juxtaposition of those cells. Analysis of approximately 1 million
29 virtual embryos showed that “100% euploid” and “100% aneuploid” biopsy results are
30 relatively accurate predictors of the remainder of the embryo, while mosaic biopsy results
31 are poor predictors of the proportion of euploid and aneuploid cells in the rest of the
32 embryo. Within mosaic embryos, ‘clumping’ of aneuploid cells further reduces the accuracy
33 of biopsies in assaying the true aneuploidy level of any given embryo. Nonetheless - and
34 somewhat counterintuitively - biopsy results can still be used with some confidence to rank
35 embryos within a cohort. Our simulations help resolve the apparent paradox surrounding
36 PGT-A: the biopsy result is poorly predictive of the absolute level of mosaicism of a single
37 embryo, but may be applicable nonetheless in making clinical decisions on which embryos
38 to transfer.

39 Introduction

40 Preimplantation Genetic Testing for Aneuploidy (PGT-A) is one of the most controversial
41 areas of treatment in reproductive medicine. Since its inception, questions about its efficacy
42 have led to entrenched points of view both in favour and against its use (Griffin and Ogur,
43 2018; Victor et al., 2020). While randomised controlled trials (e.g. Yan et al., 2021), mostly in
44 good prognosis patients, often point to minimal or no efficacy (at least in younger women),
45 non-selection trials (e.g. Tiegs et al., 2021; Wang et al., 2021; Yang et al., 2021) provide
46 strong evidence that embryos diagnosed as fully aneuploid rarely lead to live births and
47 frequently miscarry . Some consensus can be arrived at along the lines of a) PGT-A does not
48 improve cumulative pregnancy/live birth rates (some would say it was never designed to),
49 but b) PGT-A does nonetheless improve pregnancy/live birth rates per embryo transfer
50 (though some would say that this is not an accurate measure of efficacy). Key points of
51 debate and disagreement still persist however as follows: First, the extent to which PGT-A
52 improves pregnancy/live birth rate per cycle. While raw outcome data points to a clear
53 positive benefit of PGT-A (Sanders et al., 2021), this work has been challenged by Roberts et
54 al., (2022) as “naïve analysis”; they performed a more in-depth logistic regression including
55 confounders such as patient history, treatment characteristics and year of treatment, and
56 suggested that PGT-A may be detrimental overall. Second, the prospect that the process of
57 biopsying the embryo could lead to damage and therefore impaired developmental
58 potential. While Scott et al., (2013) have provided compelling evidence that this is not the
59 case in their own setting, worldwide roll-out could theoretically lead to suboptimal practices
60 in some clinics. Third, the possible confounding effects of euploid/aneuploid mosaicism.
61 Specifically, the likely role of embryo “self-correction” (high levels of embryonic mosaicism
62 earlier in development demonstrably reduce in later stages), and, pertinent to this study,

63 whether any mosaic result found in the biopsy accurately reflects that of the rest of the
64 embryo.

65

66 Currently, PGT-A involves the removal of a 5-10 cell biopsy from the trophectoderm (TE) of a
67 ~150-200 cell blastocyst embryo. Most PGT-A performed today entails assessment of the
68 biopsy's ploidy by low-read whole genome sequencing and subsequent read depth counting
69 (reviewed in Viotti, 2020). The end result is a profile with wide dynamic range that is well
70 established, with considerable accuracy, to assay for the proportion of euploid and
71 aneuploid cells in known admixtures of five or more cells. The subsequent translation to a
72 five-cell embryo biopsy is inferred with some confidence therefore and, by definition, if
73 mosaicism is present in the biopsy, the embryo as a whole was mosaic prior to biopsy. The
74 *level* of mosaicism (i.e. the proportion of aneuploid to euploid cells) among the un-biopsied
75 remainder of the embryo however is not reliably inferred. That is, if two out of the five cells
76 in the biopsy are aneuploid, this does not necessarily mean that the remainder of the
77 embryo is similarly 40% aneuploid and 60% euploid. There are three reasons for this: First,
78 from basic probabilities of sampling from a mixed population, a five-cell biopsy will not
79 always reflect this ratio. Second, the majority of euploid/aneuploid mosaics arise by post-
80 zygotic chromosomal segregation errors; populations of aneuploid cells are thus clonal and
81 would be expected to be in rough juxtaposition to one another. In other words, a mosaic
82 embryo would be expected to have "clumps" of euploid and aneuploid cells, non-
83 homogeneously distributed. Third, there is evidence that the TE and ICM (inner cell mass)
84 can have different levels of aneuploidy or mosaicism (Griffin et al., 2022; Ren et al., 2022).
85 The blastocyst thus either actively expels aneuploid cells to the trophectoderm and other
86 structures (blastocoel, surrounding degenerate cells) or the ICM disproportionately

87 disfavours the growth of aneuploid cells (Griffin et al., 2022). Indeed, as more data emerges,
88 it appears that the majority of embryos from both healthy and infertile couples are mosaic
89 to some degree (Coticchio et al., 2021; Griffin et al., 2022). Moreover, human embryonic
90 development is characterised, chromosomally, to be complex, fluid and dynamic, with
91 demonstrably fewer chromosome abnormalities present at day 3 compared to day 5
92 (Coticchio et al., 2021; Harton et al., 2017).

93

94 Experimental data provides strong evidence that, for the most part, the biopsy result
95 obtained accurately represents the chromosome constitution of the rest of the embryo (Kim
96 et al., 2022; Navratil et al., 2020; Victor et al., 2019). The majority of biopsy results are
97 however “100% euploid” or “100% aneuploid”, with mosaic results comprising ~4-20% of
98 returns. Furthermore, 100% euploid diagnoses may not have detected low level
99 euploid/aneuploid mosaicism by virtue of the fact that, simply, no aneuploid cells were
100 biopsied. Initial reports of live births following mosaic embryo diagnoses (Greco et al., 2015)
101 were followed by the establishment of a registry logging the transfers of mosaic embryos
102 and their clinical outcomes (Viotti et al., 2023, 2021). Data shows that live birth rate per
103 embryo transfer is generally lower in mosaic embryos than embryos with a “100% euploid
104 result”, but that other health outcomes for babies born from the mosaic or euploid groups
105 seem largely indistinguishable (Viotti et al., 2023, 2021).

106

107 Computational models provide a useful adjunct to clinical outcome data studies, allowing
108 multiple iterations of the same biological scenario to be tested. In this study, we explored,
109 comprehensively, the utility of embryo biopsy using computational modelling. Previous
110 modelling of embryo biopsy as a sampling approach using a hypergeometric distribution

111 model demonstrated limitations in how much information can be obtained from a single
112 biopsy (Gleicher et al., 2017). This modelling assumed aneuploid cells were randomly
113 distributed within an embryo; however, their clonal origin suggests this to be unlikely
114 (Mantikou et al., 2012). Clustered aneuploid cells in a biopsy do not fit a hypergeometric
115 distribution and so the previous model could have *overstated* the utility of biopsying. If we
116 were to ask the question “does a mosaic diagnosis accurately predict the level of mosaicism
117 in the rest of the embryo?” we need to define what we mean by “accurately” – within 1%,
118 5%, 10% or 20% for instance. Finally, even if we cannot accurately predict the absolute level
119 of embryo mosaicism, does this mean that the *ranking* of embryos based on the level of
120 mosaicism seen is also invalid?

121

122 With the above in mind, we developed a more extensive computational model of embryo
123 biopsy, allowing us to explore the scenarios in which biopsies do, or do not, provide useful
124 information. We were interested not only in the proportion of aneuploid cells in both the
125 biopsy and the whole embryo, but also how dispersed or clustered those cells are, as well as
126 the size of the biopsy. We related this data back to previously described classifications of
127 aneuploidy rates into low and high-level mosaicism (Munné et al., 2020) and in the PGDIS
128 position statement on the transfer of mosaic embryos (Leigh et al., 2022). This allowed us to
129 resolve the paradoxical utility of trophoctoderm biopsy for PGT-A via a simple maxim:
130 *although the information contained in the biopsy is highly imperfect, even imperfect*
131 *information is clinically useful.*

132

133 **Methods**

134 In order to develop a “virtual embryo” computational model, we used R (R Core Team,
135 2022). The virtual embryo was implemented in the *tessera* R package, available from
136 <https://github.com/bmskinner/tessera> and allowed us to design virtual embryos with
137 specific proportions of aneuploid cells, dispersals of those cells and to take different sizes of
138 biopsy in multiple iterations.

139

140 The embryo was implemented as a Fibonacci lattice: projection of a Fibonacci spiral into
141 spherical coordinates, providing a sphere with evenly spaced points of desired number at
142 the surface (González, 2009; Swinbank and Purser, 2006). This represents the TE (for
143 simplicity, we do not consider the ICM in this model). Each cell in the embryo can be euploid
144 or aneuploid; when an embryo is created using this model, the proportion of aneuploid cells
145 is specified, and the level to which the aneuploid cells are dispersed on a scale of 0-1. The
146 overall placement strategy models a biological situation in which a variable number of
147 “seed” progenitor cells undergo mal-segregation at an early-stage embryonic development,
148 followed by clonal expansion of these aneuploid cells within their immediate vicinity. The
149 “dispersion” parameter controls the number of initial seed regions, ranging from 0 (no
150 dispersion, one single clump of aneuploid cells is present) to 1 (maximal dispersion, each
151 aneuploid cell in the embryo is placed non-adjacent to other aneuploid cells if possible).

152

153 Technically, the dispersion is set by seeding initial aneuploid cells that are not adjacent to
154 another aneuploid cell, and which can grow into aneuploid patches. As dispersion increases,
155 so does the number of initial seeds. When all seeds have been placed, or no more seeds can
156 be placed without being adjacent to an existing aneuploid cell, any remaining aneuploid

157 cells required are selected randomly from the euploid cells adjacent to at least one
158 aneuploid cell. The placement of aneuploid cells is random within these constraints,
159 controlled by R's random number generator. An overall seed for the generator can be set
160 for each embryo to allow reproducibility.

161

162 We then repeatedly biopsied the embryo to yield all possible biopsies from that embryo. A
163 biopsy of desired size n is taken by sampling a cell and its $n-1$ closest neighbours. This is
164 repeated for each cell in the embryo. The number of aneuploid cells in each biopsy is then
165 counted and aggregated.

166

167 We considered four parameters: aneuploidy, dispersal, embryo size and biopsy size. We
168 simulated embryos with aneuploidy from 0% to 100% in 1% intervals, and dispersal of
169 aneuploid cells, from 0 (clustered) to 1 (fully dispersed) in 0.01 fractional intervals. Four
170 embryo sizes were modelled: 100, 150, 200 and 250 cells, and twelve biopsy sizes: 3, 4, 5, 6,
171 7, 8, 9, 10, 15, 20, 25 and 30 cells. For each combination of aneuploidy, dispersal, embryo
172 size and biopsy size we generated 100 embryos using different random number seeds.

173

174 Given the large amount of data, unless otherwise stated, the results presented herein use a
175 biopsy size of 5 cells and embryo size of 200 cells, as aneuploidy and dispersal were more
176 important than embryo or biopsy size to the results. Simulated data were created using
177 tessera v0.6 and results were visualised using ggplot2 (Wickham, 2016). The tessera package
178 also contains a visualisation tool in Shiny (Chang et al., 2022) for exploring the impacts of
179 aneuploidy and dispersal on biopsy results. Tessera can be run in a local web browser, and is
180 also available for basic visualisation via web server at <https://reproduction.essex.ac.uk>.

181

182 *Statistical analysis of clinical data*

183 We assessed the latest clinical data for empirical support for our model outputs. Data were
184 obtained from 1733 embryos by the International Registry of Mosaic Embryo Transfers
185 (IRMET), of which 1000 have previously been reported in Viotti et al. (2021), and 733
186 collected since. The analyses presented here were approved by the IRB of the Zouves
187 Foundation (OHRP IRB00011505, Protocol #0002). Embryo were evaluated for chromosomal
188 abnormalities in trophectoderm biopsies by PGT-A (Veisieg, Vitrolife) and classified as
189 ‘mosaic’ if the results indicated intermediate copy number for any genomic region within
190 the assay’s resolution (>20Mb) in the 20-80% interval between whole chromosome
191 numbers, as laid out by the position statement issued by the Preimplantation Genetic
192 Diagnosis International Society (PGDIS) (Leigh et al., 2022). Embryos were classified
193 following Viotti et al. (2021) as either whole chromosome mosaics (at least one whole
194 chromosomal aneuploidy and zero or more segmental aneuploidies) or segmental mosaics
195 (at least one segmental aneuploidy and no whole chromosomal aneuploidy).

196

197 Statistical analysis was performed in R. Data were analysed by logistic regression, modelling
198 successful outcome as dependent on the type of aneuploidy and the level of aneuploidy.
199 Comparisons between categorical groups were performed with two-tailed chi-square tests
200 with Bonferroni correction for multiple testing.

201

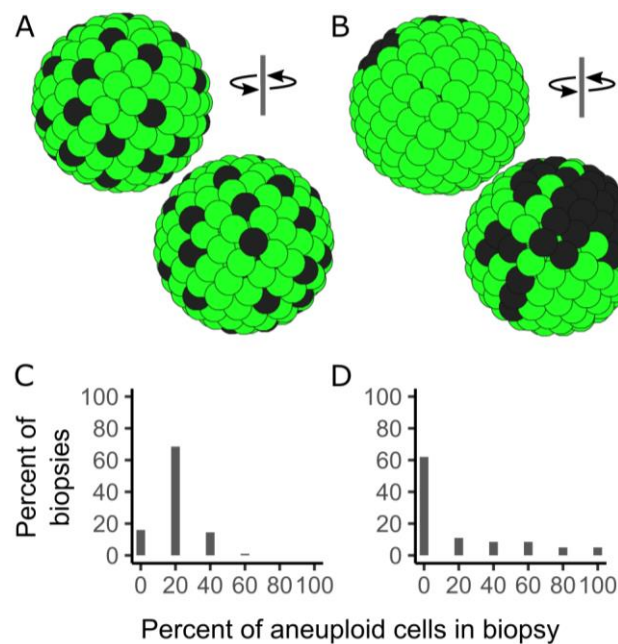
202 Scripts used to generate all analyses and figures presented are available at

203 https://github.com/bmskinner/embryo_biopsy.

204 Results

205 We developed the R package `tessera` to simulate trophoctoderm biopsies, allowing us to
206 compare the effects of changing embryo parameters on biopsy results. Figure 1 shows two
207 example embryos, both with 20% aneuploidy, but different dispersal of the aneuploid cells
208 (Fig 1 A,B). The distribution of biopsies obtained from these embryos consequently also
209 differs.

210



211

212 *Figure 1: Model embryos created using tessera with 20% aneuploid cells (dark grey) and 80%*
213 *euploid cells (light green), shown from front and back. Embryos have either high (A) or low*
214 *(B) dispersal of the aneuploid cells. The potential biopsies obtained from each differ (graph C*
215 *for embryo A, graph D for embryo B). For the clustered embryo (B) most biopsies are not*
216 *representative of the mosaicism level present in the embryo (D); the reverse is true for the*
217 *dispersed embryo.*

218

219 In the dispersed embryo (Fig 1A), the majority of biopsies also have 20% aneuploidy (1
220 aneuploid cell in the biopsy; Fig 1C), but in clustered embryo (Fig 1B) the majority of the
221 biopsies come from the euploid region of the embryo and have no aneuploid cells (Fig 1D).
222 Biopsies taken from a clustered embryo are hence less likely to be representative of the
223 embryo than biopsies taken from the dispersed embryo.

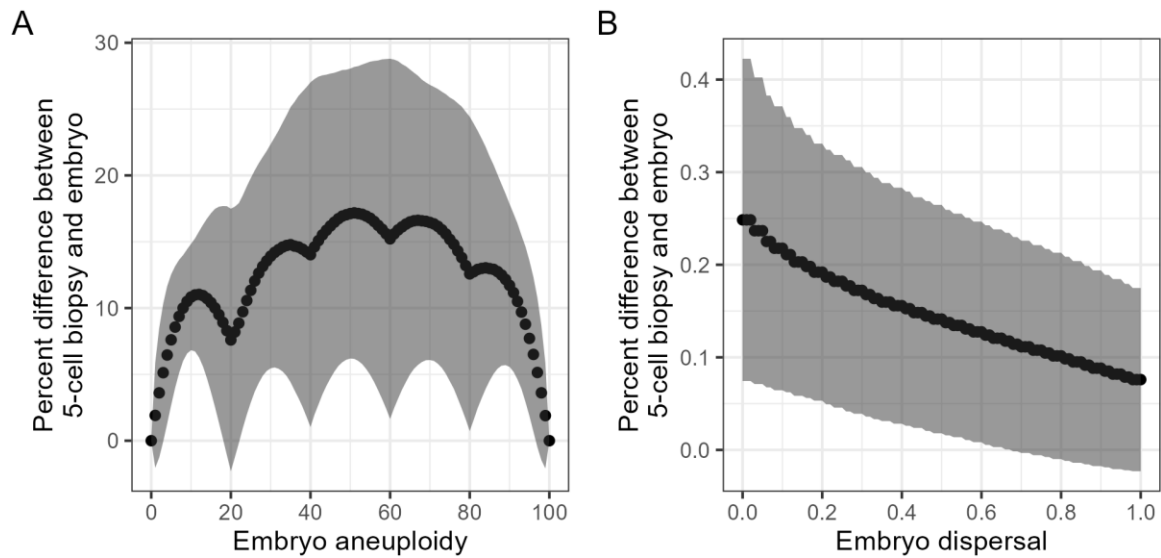
224

225 We used this approach to explore the impact of aneuploidy level, dispersal, biopsy size and
226 embryo size by simulating and biopsying multiple randomly generated embryos for each
227 parameter combination.

228 *Aneuploidy level and dispersal both affect biopsy accuracy*

229 In the first step, we kept dispersal high, and varied the level of aneuploidy. We visualised
230 the overall accuracy of the biopsies by comparing the biopsy aneuploidy level to the overall
231 embryo aneuploidy level (Figure 2A). We saw an increase in the error as aneuploidy
232 increases towards 50%. This matches expectations: the more cells of a single type are
233 present in the embryo, the more likely a biopsy is to reflect those cells. There is also a
234 decrease in error as aneuploidy increases from 50% to 100% and the cells again become
235 more consistent.

236



237

238

239 *Figure 2: Difference between the aneuploidy of a 5-cell biopsy and the aneuploidy of the*
240 *embryo for embryos with increasing levels of (A) aneuploidy at constant dispersal of 1 and*
241 *(B) increasing dispersal with constant aneuploidy of 20%. Values show the mean and*
242 *standard deviation of 100 replicates. Error is highest at 40%-60% aneuploidy, and at low*
243 *dispersals. The local minima in the aneuploidy chart are due to the 5-cell biopsy size,*
244 *allowing exact matches to the biopsy at these aneuploidies.*

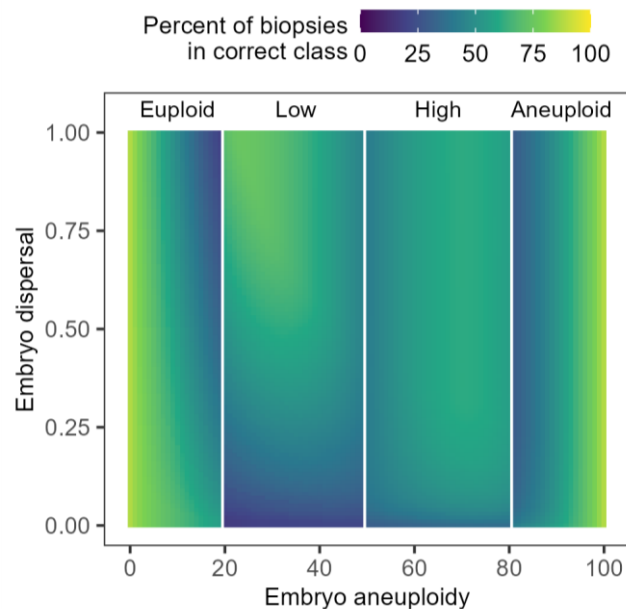
245

246 If aneuploidy is held constant at 20%, and dispersal of aneuploid cells is varied, we obtain
247 the pattern in Fig 2B: greatest error at low dispersal, decreasing as dispersal increases. This
248 also matches expectations: a biopsy from a highly dispersed embryo will be more likely to
249 reflect the embryo than a biopsy taken from a patch of clustered aneuploid cells.

250 *Hard classification thresholds cause lower accuracy in classifying embryos close to the*
251 *boundary.*

252 The difference between the level of mosaicism in the biopsy and that in the embryo is one
253 useful measure, but there are other classification methods used in clinics. The PGDIS
254 (Preimplantation Genetic Diagnosis International Society) described classification levels for
255 aneuploidy that are followed or adapted by many fertility clinics (Leigh et al., 2022; Munné
256 et al., 2020), hereafter termed ‘embryo classes’ for brevity. Under the position statement,
257 the following classification system is possible: 0-<20% aneuploidy is considered ‘euploid’,
258 20-<50% ‘low level’ mosaic, 50-80% ‘high level’ mosaic, and >80-100% ‘aneuploid’. We used
259 these classifications as a more practical assessment of biopsy accuracy: what percentage of
260 biopsies from an embryo are in the same class as the embryo itself?

261



262

263 *Figure 3: The percentage of biopsies in the same class as the embryo from which they came,*
264 *for all combinations of aneuploidy and dispersal. Each combination represents the mean of*

265 *100 embryos. Accuracy is lower in embryos with low dispersal, especially in 'low-level'*

266 *mosaic embryos.*

267

268 Figure 3 shows this embryo classification accuracy for dispersal and aneuploidy

269 combinations as a heatmap. Each combination is calculated as the mean from 100 embryos.

270 Large differences are seen between the accuracies of biopsies from embryos in the different

271 embryo classes become apparent. Generally, high dispersal of aneuploid cells is more

272 accurate than clustered cells, and extremes of aneuploidy are more accurate than

273 intermediate mosaic levels of aneuploidy. Overall classification accuracy is lowest in the low-

274 level mosaic class and at the boundaries between classes.

275 *Increasing biopsy size does not greatly increase accuracy in clustered embryos*

276 All models presented so far have used a biopsy size of 5 cells. In PGT-A biopsies tend to be 5-

277 10 cells, so we tested the effect of varying biopsy size from 3 cells to an unrealistically high

278 30 cells on the accuracy of embryo classification (Figure 4); the panel for 5-cells in figure 4 is

279 identical to Figure 3.

280

281 Notably, while accuracy does increase as biopsy size increases, we see little difference over

282 a 'practical' biopsy size of 5-10 cells. We also see that even if the biopsy is unrealistically

283 large (>15 cells), there is little improvement to biopsy accuracy in embryos with highly

284 clustered aneuploid cells, especially in the low-level mosaic class. This suggests there is no

285 clear benefit to biopsying larger numbers of cells. Indeed, the effect of using hard cut-off

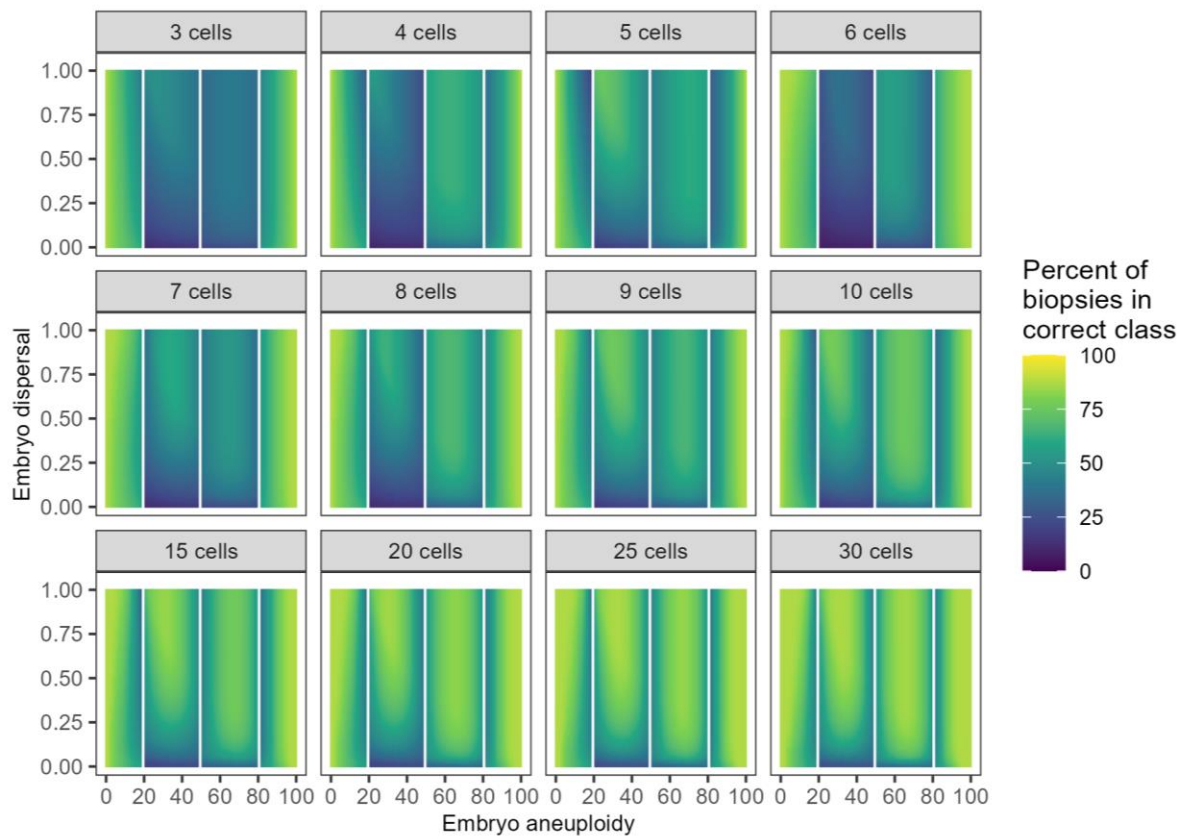
286 thresholds with these different biopsy sizes makes, for instance, a 6-cell biopsy appear less

287 accurate over the high-level mosaic embryos than a 5-cell biopsy. Furthermore,

288 classification accuracy of low- and high-level mosaic embryos is very poor for 3-cell biopsies
289 and for 4-cell biopsies of low-level mosaic embryos, and we therefore caution against
290 collecting fewer than 4 cells in a biopsy.

291

292



293

294 *Figure 4: The effect of increasing biopsy size on accuracy for all combinations of embryo*
295 *aneuploidy and dispersal. Numbers above each heatmap show the biopsy size. There are*
296 *only small increases to accuracy over the 5-10 cell biopsy range, and even at larger biopsy*
297 *sizes there is little difference to accuracy when dispersal of aneuploid cells is very low.*

298

299 We then tested whether taking two 5-cell biopsies from an embryo improved over a single
300 10-cell biopsy. There is a small improvement for embryos with low dispersal (Figure S1-S3),

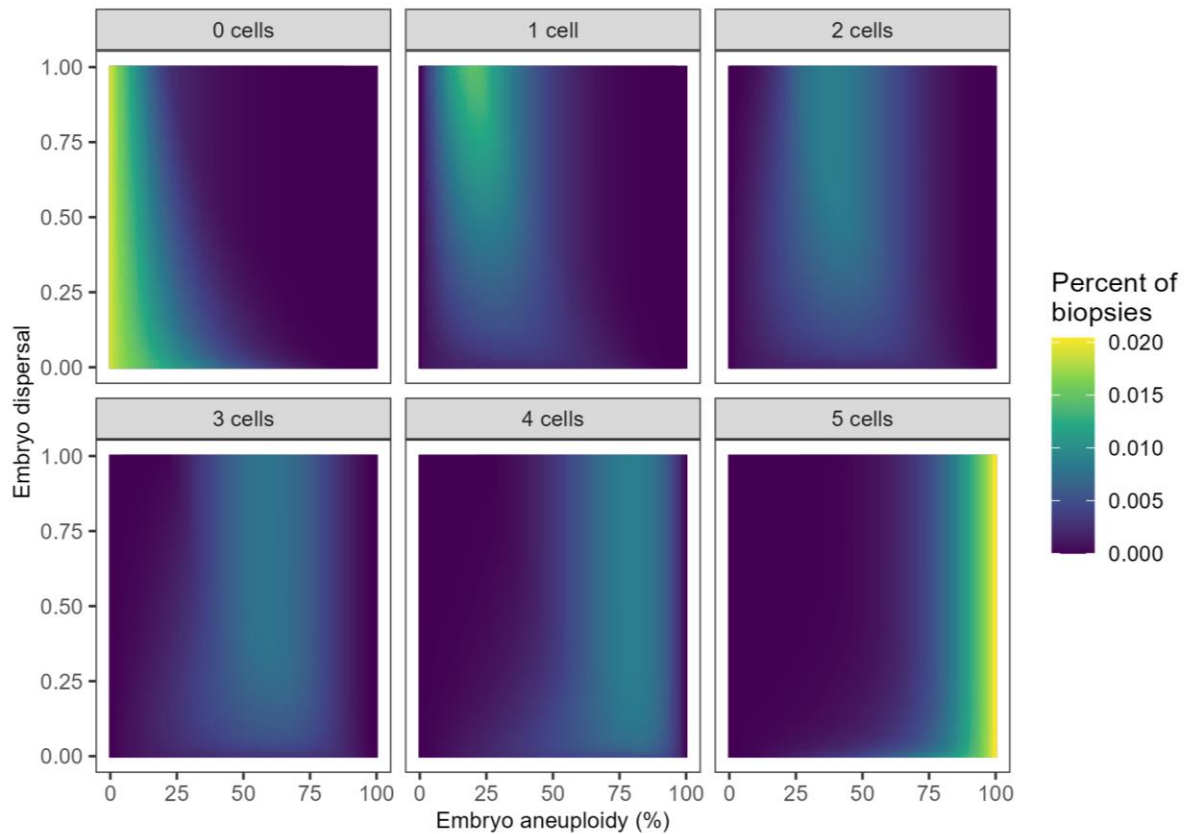
301 increasing accuracy by up to ~12 percentage points, but there are no benefits at higher
302 dispersals.

303 *Predicting an embryo as high- or low-level mosaic from a single biopsy is not reliable*

304 Up to this point, we have demonstrated how patterns of embryo biopsies vary as the
305 embryo parameters change. We next considered the reverse situation, which is what
306 clinicians actually experience: given a single biopsy, which embryos are most likely to
307 generate this biopsy, and does this allow effective prediction of embryo status? For this, we
308 made the assumption that an embryo is equally likely to originate from anywhere in the
309 parameter space of aneuploidy and dispersal. This is probably not true of real embryos, but
310 we do not have enough biological data to clearly constrain these values as yet (see the
311 Discussion).

312 Under these assumptions, we simulated a pool of 1,020,100 embryos covering all pairwise
313 combinations of aneuploidy and dispersal with 100 replicates per combination, and took all
314 202,020,000 possible biopsies from these embryos. We then grouped the biopsies by the
315 number of aneuploid cells they contained. For each number of aneuploid cells, we counted
316 how frequently biopsies with that number occurred in each embryo combination (Figure 5).

317



318

319 *Figure 5: The possible origin embryos for 5-cell biopsies with 0 to 5 aneuploid cells. Biopsies*
320 *with either 0 or 5 aneuploid cells are more likely to come from a constitutively normal or*
321 *constitutively aneuploid embryo respectively, but mosaic biopsies can come from a much*
322 *broader possible range of embryos.*

323

324 We observed that while fully euploid or aneuploid biopsies are more likely to originate from
325 correspondingly high or low aneuploid embryos, when biopsies are mosaic there is a wide
326 range of possible origins. This shows that accurately classifying a mosaic embryo based on a
327 single biopsy is not robust.

328

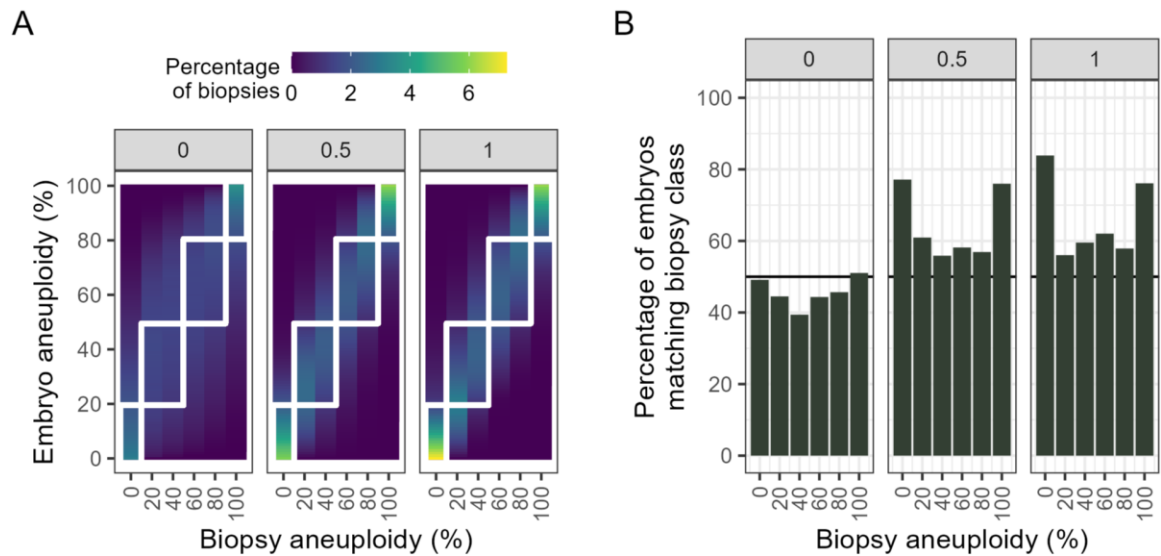
329 To demonstrate this further, we focussed on just three levels of dispersal - 0 (clustered), 0.5
330 (mid dispersal) and 1 (highly dispersed). For each level of biopsy aneuploidy, what

331 percentage of biopsies originate at each level of embryo aneuploidy (Figure 6A)? In the ideal
332 scenario biopsy aneuploidy and embryo aneuploidy would be perfectly correlated and we
333 would be able to derive the precise level of aneuploid cells in a mosaic embryo for a given
334 biopsy result. However, while there is a correlation, it is weak, especially at low dispersal
335 (i.e. when cells are clustered). Adding the embryo classification thresholds on top of this
336 chart, we then counted the number of embryos that matched the biopsy's class (Figure 6B).
337 At low dispersal, only about half of biopsies would correctly predict their embryo's class,
338 and even at high dispersal the accuracy rises to ~80% only for fully euploid or aneuploid
339 biopsies. A practical interpretation is that if one took a 5-cell biopsy from an embryo with
340 clustered aneuploid cells, and the biopsy showed one aneuploid cell (low level mosaic), the
341 embryo itself would be a low-level mosaic for less than half of such biopsies; even if the
342 aneuploid cells were dispersed, the embryo would still be low-level mosaic for 55% of these
343 biopsies. For a mosaic embryo, the classification would be as likely to be incorrect as
344 correct.

345

346

347



348

349 *Figure 6: A mosaic biopsy has limited predictive power at classifying an individual embryo.*

350 *(A) The percentage of biopsies with a given aneuploidy originating from an embryo with a*

351 *given aneuploidy at three levels of dispersal (0, 0.5, 1). The embryo classification thresholds*

352 *are drawn as white squares; for prediction to be useful, the majority of embryo aneuploidies*

353 *should be within the squares. (B) the percentage of biopsies that correctly predict their*

354 *embryo class at the three levels of dispersal.*

355 *Biopsy results are nonetheless informative when ranking mosaic embryos*

356 In clinical practice, it is rare to only consider one single biopsied embryo at a time. Usually

357 multiple oocytes are retrieved following ovarian stimulation, of which some will be graded

358 good quality and suitable for TE biopsy - e.g. 16.4 ± 11 oocytes from which 4.9 ± 4.7

359 blastocysts were biopsied and a single embryo transferred; (Lin et al., 2020). The clinical

360 real-world question is “*which of these embryos (if any) should be transferred to yield the*

361 *best chance for pregnancy?*”. The embryos are ranked, using the biopsies to determine their

362 relative quality. Do the limitations imposed by single biopsy accuracy impair the ability to

363 correctly rank two or more embryos?

364

365 Consider two embryos. One has 40% aneuploidy, and a biopsy yielding 2/5 aneuploid cells.
366 The second has 60% aneuploidy and a biopsy yielding 3/5 aneuploid cells. The biopsies are
367 *accurate* representations of the embryo. The biopsies can also be used to *rank* the embryos
368 from less aneuploid to more aneuploid. Now consider the same embryos, but with different
369 biopsy results: 0/5 and 2/5 aneuploid cells respectively. The biopsies are no longer *accurate*;
370 they do not reflect the true level of aneuploidy in the embryo. However, they still correctly
371 *rank* the embryos from less aneuploid to more aneuploid. Selecting the embryo with the
372 lowest number of aneuploid cells in the biopsy for transfer is still the most sensible decision.

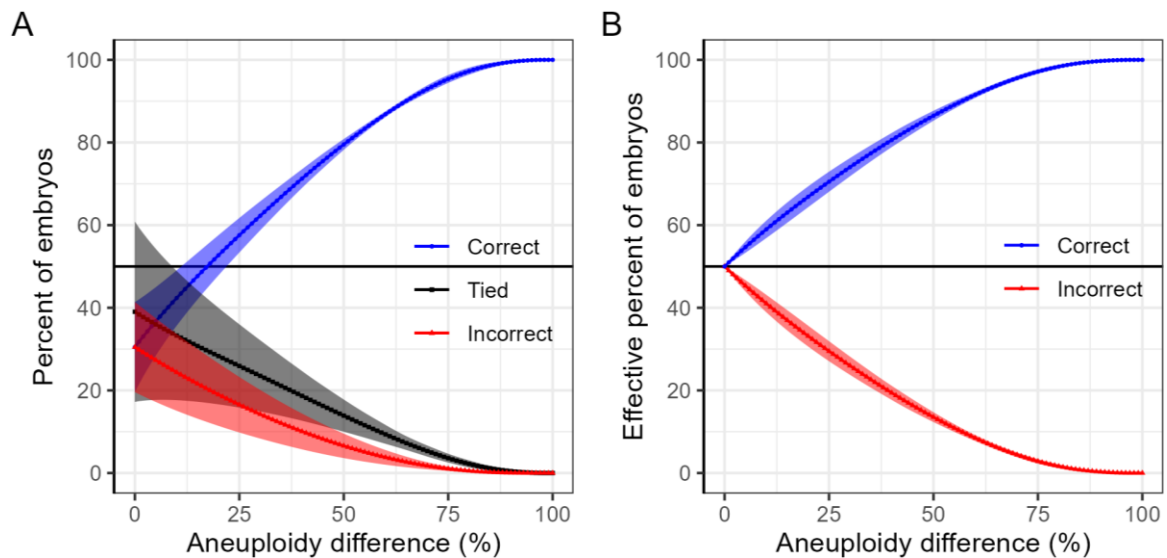
373

374 To understand how this ability to rank embryos is affected by aneuploidy and dispersal, we
375 repeatedly generated two embryos with different aneuploidies, from 0-100%, took all
376 possible biopsies from each embryo, and made all pairwise combinations of those biopsies.
377 We scored the ranking as correct if the biopsy from the less aneuploid embryo had fewer
378 aneuploid cells than the biopsy from the more aneuploid embryo. Equal numbers of
379 aneuploid cells in the biopsies were scored as ties, and higher numbers of aneuploid cells in
380 the biopsy from the less aneuploid embryo were scored as incorrect ranking.

381

382 We aggregated the rank results by the true difference in aneuploidies between the two
383 embryos, since ranking embryos with a large aneuploidy difference should be more likely to
384 succeed than ranking embryos with a small aneuploidy difference. Figure 7A shows the
385 mean and standard deviation over 100 replicates for each aneuploidy combination at zero
386 dispersal (the worst-case scenario for accuracy from our earlier modelling). Although some
387 biopsies are tied (equal numbers of aneuploid cells), on average ranking embryos is

388 successful more than half of the time as long as there is a greater than 25 percentage point
389 difference in aneuploidies.



390

391 *Figure 7: Effect of the size of aneuploidy differences on ranking two embryos **with different***
392 ***levels of aneuploidies** by biopsy result for embryos with zero dispersal. A) There is a greater*
393 *than 50% chance of unambiguously choosing the correct rank order as long as the absolute*
394 *difference in aneuploidy is greater than 25%. B) Biopsies with equal aneuploidy (tied ranking)*
395 *are evenly split between correct and incorrect ranking to mimic the clinical scenario in which*
396 *a random choice will be correct 50% of the time. Ranking two embryos based on biopsy*
397 *outcomes will **always** on average correctly rank embryos better than chance if the embryos*
398 *have unequal levels of aneuploidy. 100 replicate embryos were generated per aneuploidy*
399 *combination. Values show mean and standard deviation after aggregating by aneuploidy*
400 *difference. More detailed breakdowns by aneuploidy and dispersal combinations are shown*
401 *in supplementary data (Figures S4 - S5).*

402

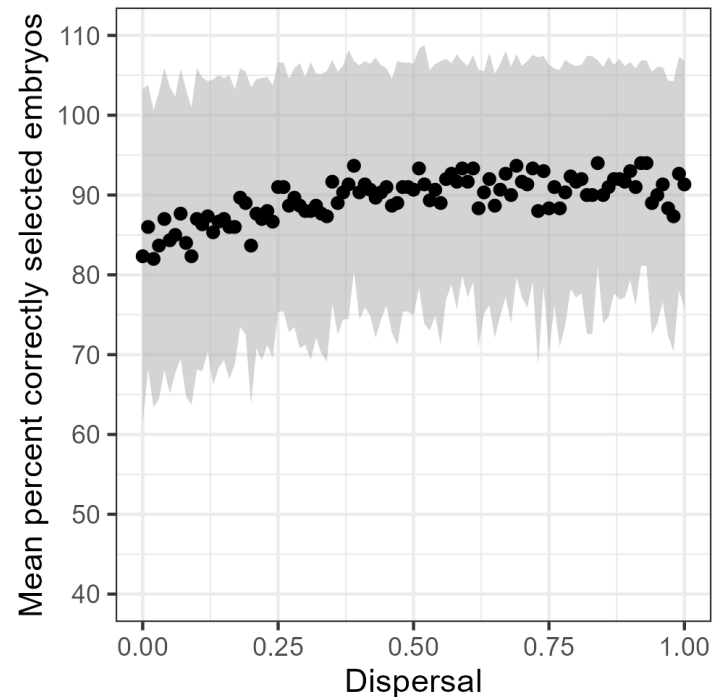
403

404 What practically happens in the clinic if two embryos have equal biopsy results, and one is
405 desired for transfer? The data must be either discarded as uninformative, and other embryo
406 characteristics (*e.g.* morphology) relied upon, or a random choice must be made between
407 the two embryos. In our simulated embryo pairs, a random choice would correctly select the
408 embryo with lower aneuploidy half the time. We accounted for this by splitting half of the
409 ‘Tied’ rank biopsies each into the ‘Correct’ and ‘Incorrect’ ranks (Figure 7B), yielding the
410 effective ranking ability. As long as there is a difference in aneuploidy between two
411 embryos, no matter how small, biopsy data will on average allow the two to be
412 distinguished better than by chance. This demonstrates that biopsying an embryo is useful
413 for comparisons *between* embryos, *even if it is not directly informative as to the absolute*
414 *aneuploidy status of the embryo.*

415

416 In practice, clinics are not only trying to distinguish between two embryos alone. The goal is
417 often to select the best k embryos from a pool of n . We simulated an embryo pool with
418 random aneuploidy levels, from which three embryos were selected via single biopsy (Figure
419 8) and compared the selected embryos to the true “best” embryos. This ranking is effective
420 across the full range of possible dispersals, and at other pool sizes and selection sizes (Figure
421 S6).

422



423

424 *Figure 8: Single biopsies can reliably select the best three embryos from a pool of six*
425 *embryos. For each dispersal level, 100 pools of embryos were generated with random*
426 *aneuploidy levels. A single biopsy from each embryo was used to rank the pool, and the*
427 *three embryos with lowest rank were selected. The figure shows the mean percentage of*
428 *selected embryos that are in the true “best three”. Values show mean and standard*
429 *deviation from 100 embryo pools. Full combinations are in Figure S6.*

430

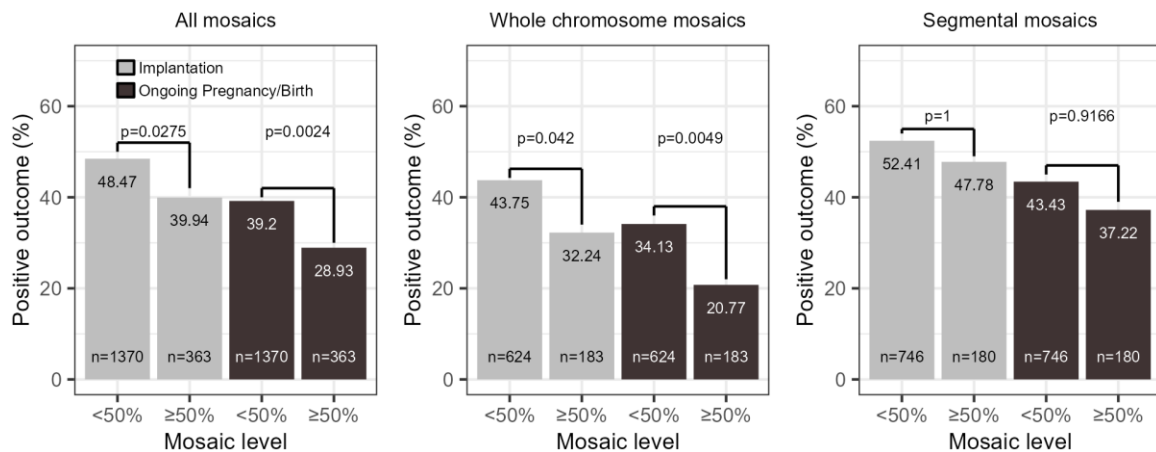
431 *Embryo transfer data demonstrate association of aneuploidy level with clinical outcomes*

432 Viotti et al. (2021) provided an analysis of outcome data from 1000 mosaic embryos
433 showing statistically significant inverse correlation between aneuploidy level and favourable
434 outcomes (implantation as measured via gestational sac, ongoing pregnancy and birth).

435 Here, we extend that data with an additional 733 mosaic embryos. In confirmation of the
436 previous analysis, we show there is still a significant difference in both implantation and

437 ongoing pregnancy / birth outcomes between mosaic embryos classified as less than 50% or
 438 greater than 50% aneuploid (Figure 9).

439



440

441 *Figure 9: Implantation (light grey) and ongoing pregnancy/birth rates (dark grey) split by*
 442 *segmental or whole chromosome aneuploidies. Complex mosaics with multiple changes*
 443 *detected were classified based on the largest abnormality present. Thus ‘Whole chromosome*
 444 *mosaics’ includes all cases involving a full chromosome aneuploidy regardless of the*
 445 *presence or absence of additional segmental aneuploidies, while ‘Segmental mosaics’*
 446 *includes only cases where all aneuploid regions were sub-chromosomal in extent. Breaking*
 447 *the data into <50% or ≥50% aneuploidy reveals significant differences in outcome for whole*
 448 *chromosome mosaics, though not for segmental mosaics (chi square tests with Bonferroni*
 449 *correction). This figure is structured to match Viotti et al. 2021 Figure 2A for comparison.*

450

451 We used logistic regression to further analyse the relationship between aneuploidy level
 452 and aneuploidy type on the probability of successful outcome of implantation or ongoing
 453 pregnancy/birth (Figure S8). We found that, holding aneuploidy type constant, the odds of
 454 successful implantation decreased by 1.14% (Odds Ratio [OR]: 0.989, CI: 0.981-0.996) for

455 each additional percentage of aneuploidy. Holding aneuploidy level constant, the odds of
456 successful implantation decreased by 33.9% (OR: 0.661, CI: 0.554 - 0.799) for mosaics with
457 whole chromosomal aneuploidies compared to segmental aneuploidies.

458

459 For ongoing pregnancy / births, holding aneuploidy type constant, the odds of successful
460 outcome decreased by 1.50% (OR: 0.985, CI: 0.977-0.993) for each additional percentage of
461 aneuploidy. Holding aneuploidy level constant, the odds of successful outcome decreased
462 by 38.2% (OR: 0.618, CI: 0.506 - 0.754) for mosaics with whole chromosomal aneuploidies
463 compared to segmental aneuploidies.

464

465 **Discussion**

466 The chromosomally complex, fluid and dynamic nature of the human embryo (Coticchio et
467 al., 2021), coupled with the widespread use of PGT-A make it no surprise that it is still an
468 area of great debate. The data presented here provide evidence to resolve an apparent
469 paradox on whether the practice of PGT-A is effective when embryos are mosaic. Our
470 modelling demonstrates that mosaic biopsies can derive from a wide range of embryos and
471 their results should not be considered a reliable indicator of individual embryo status.

472 Somewhat counterintuitively however, when considering a pool of embryos that need to be
473 ranked based on the proportion of aneuploid (vs euploid) cells, a mosaic biopsy result can
474 be informative in establishing that ranking. Furthermore, when a biopsy indicates that all
475 cells are aneuploid, or all cells are euploid, it is considerably more informative in predicting
476 the genetic status of the embryo.

477 *Our modelling supports PGT-A outcome data*

478 The data presented here support the outcome data in the mosaicism registry (1733 embryos
479 at the time of writing) suggesting that the proportion of aneuploid cells in a mosaic biopsy is
480 a predictor of the chances of live birth – the greater the level of aneuploidy in the mosaic
481 biopsy, the lower the chances of a live birth. This also supports data from post-2020 non-
482 selection trials and the unblinded cohort study of Gleicher and colleagues (Barad et al.,
483 2022; Tiegs et al., 2021; Wang et al., 2021; Yang et al., 2021), in which embryo biopsies
484 diagnosed as 100% euploid have a higher chance of pregnancy and live birth (55-65%) than
485 any classes in the mosaicism registry. On the other hand, those diagnosed as 100%
486 aneuploid have little or no chance (0-2%). Of the 4 studies that have addressed this issue, a
487 total of 267 embryos have been transferred, with only 3 (1%) leading to chromosomally
488 normal live births (in 2 of the 4 studies the live birth rate was 0%). The three surviving births
489 presumably represented genotyping errors, or mosaic embryos in which a postzygotic error
490 led to a cluster of aneuploid cells around the site of biopsy.

491
492 The debate over the utility of PGT-A often centres around the compounding effects of
493 mosaicism and the interpretation of its results. While there are few randomised controlled
494 trials (RCTs) for PGT-A, meta-analysis of RCTs has suggested chromosome copy number
495 screening increases implantation rates (Dahdouh et al., 2015). More recent RCTs suggest
496 that PGT-A does not increase cumulative live birth rate in women between 20 and 37
497 (average age 29) (Yan et al., 2021) but these studies may be under-powered (Cornelisse et
498 al., 2020). Data is especially lacking on the utility of PGT-A for women over 35, a high-risk
499 group for aneuploidies. Munné et al., (2019) found no increase in ongoing pregnancy rate
500 (OPR) at 20 weeks in women aged 25-40 associated with PGT-A, though post-hoc analysis of

501 women aged 35-40 showed a significant increase in OPR. In light of the lack of conclusive
502 RCTs and biological uncertainty about the impacts of mosaicism, Gleicher et al., (2021) have
503 suggested PGT-A should not be routinely offered in the clinic, as it risks discarding viable
504 embryos, does not provide reliable information and may give clinics a conflict of interest in
505 recommending expensive yet unnecessary treatments to patients (Gleicher et al., 2021,
506 2020).

507

508 Most data for higher risk groups come from published pregnancy rates from clinics and deal
509 with pregnancy or live birth rates per embryo transfer. It is very clear that, by this measure,
510 PGT-A confers a benefit (Sanders et al., 2021), particularly in older women where the
511 difference is over tenfold. Such results are borne out by other non-selection trials (Tiegs et
512 al., 2021), and an unblinded cohort study (Barad et al., 2022) in which fully aneuploid
513 diagnoses were transferred, but only led to live birth 1% of the time. Strong support for the
514 effectiveness of biopsies in selecting mosaic embryos for transfer has come from analysis of
515 outcomes (Viotti et al., 2021) and our follow-up analysis here, which show clear differences
516 in rates of implantation and ongoing pregnancy for embryos with low level or high-level
517 mosaicism. Given the good/poor prognosis for constitutively euploid/aneuploid embryos
518 respectively, this is of primary importance for cycles where *only* embryos with a mosaic
519 diagnosis. The proportion of such cycles is not well characterised but has been reported to
520 be up to 20% (Lin et al., 2020).

521 *Relevance for clinical interpretation of biopsy data*

522 The modelling presented here provides evidence that biopsy results (even mosaic ones) can
523 be interpreted with some confidence when ranking embryos for potential transfer, but give

524 limited information about a single embryo. Furthermore, assigning a classification to a
525 biopsy such as “euploid, low-level mosaic, high-level mosaic or aneuploid” can also affects
526 the accuracy of the reporting. In the light of the results presented here we respectfully
527 suggest that while “euploid and aneuploid” should be retained for biopsies showing 0% or
528 100% aneuploid cells respectively, the classification of mosaic embryos based on biopsies
529 with intermediate levels of aneuploidy detection is less robust. Clinicians should bear in
530 mind that simple fixed cut-offs for “high” or “low” levels of mosaicism can be misleading
531 when considering only a single embryo. Rather, we suggest using classification or absolute
532 aneuploidy level preferentially for ranking embryos, regardless of any nominal cutoffs. We
533 have shown that any absolute difference in the measured aneuploidy level is sufficient to
534 rank one embryo as higher or lower grade aneuploidy than another at better than chance
535 accuracy, though if the measured aneuploidy levels for two embryos fall within 20% of each
536 other, clinicians may wish to weight other aspects of embryo quality (such as morphology)
537 more highly when selecting embryos for transfer. Our testing of biopsy sizes showed
538 classification accuracy of low- and high-level mosaic embryos is poor for 3-cell biopsies and
539 for 4-cell biopsies of low-level mosaic embryos and we therefore suggest collecting at least 5
540 cells if possible. We also found only a small benefit to taking two 5-cell biopsies versus one
541 10-cell biopsy, and thus given the robust ranking of embryos in a pool from single biopsies,
542 we do not recommend multiple biopsies.

543 *Future extensions to modelling for consideration*

544 In this study, while we addressed the level of aneuploidy in the biopsy and its relationship to
545 the likely level of aneuploidy in the whole embryo, we did not consider that the TE forms
546 the placenta and other extraembryonic tissue, distinct from the inner cell mass (ICM) that

547 will develop into the foetus. However, TE biopsy reflects the chromosomal constitution of
548 the ICM in studies from both humans (Ren et al., 2022; Victor et al., 2019) and cattle (Tutt
549 et al., 2021), and uniform aneuploidies are well detected by TE biopsy (Popovic et al., 2019;
550 Victor et al., 2019). We also do not consider 'self-correction'; the long-established
551 phenomenon that cleavage stage embryos (day 3) can have aneuploidy in more than half of
552 their cells but that level nonetheless declines by trophectoderm stage (day 5) (reviewed in
553 McCoy, 2017).

554

555 Of all the parameters explored (aneuploidy, dispersal, embryo size, biopsy size), we found
556 that the level of dispersal is the most important factor affecting the accuracy of a biopsy. If
557 the aneuploid cells are evenly dispersed across the embryo, a biopsy may be fully
558 representative, but if the aneuploid cells are clustered, individual biopsies are likely to be
559 misleading. The level of dispersal may also be influenced by the type of error generating the
560 mosaicism in the first place; a nondisjunction error at meiosis followed by a trisomy rescue
561 event may have a different pattern of aneuploidies to a polymerase slippage at mitosis, or a
562 mitotic nondisjunction.

563

564 While our model has considered many parameter combinations, it has also still been using a
565 binary treatment of aneuploidy: a cell is aneuploid or it is euploid. In reality, aneuploidies
566 can be more complex, with different chromosomes having different likelihoods of
567 aneuploidy, and an embryo may contain multiple different karyotypes. Aneuploidies can
568 also be segmental, affecting regions of chromosomes and not entire chromosomes. We see
569 from the clinical outcome data analysed here that segmental mosaics do not have as strong
570 a negative impact on outcomes as whole chromosome mosaics. Aneuploidies may also be

571 balanced, invisible to bulk sequencing, and only revealed by single cell sequencing (Ren et
572 al., 2022), and mitotic nondisjunction events typically generate trisomic and monosomic
573 cells that could balance each other out and thus not easily be detectable by NGS when pools
574 of cells are analysed. We want to investigate these additional aspects of mosaicism in the
575 future and how they can affect the measured biopsy outcomes. The true incidence of
576 different levels of embryo aneuploidy and dispersal - both in natural populations and in the
577 patient groups that are typically undergoing PGT-A is also not fully understood. Only with
578 real data on the distribution of aneuploidies and their dispersal in embryos will we be able
579 to refine these models. This can be obtained through (*e.g.*) lineage tracing experiments or
580 more detailed sampling and single cell sequencing of embryos that have been rejected for
581 transfer.

582 *Conclusion*

583 The assisted reproduction community has been debating the merits of PGT-A since its
584 inception and, in our opinion, our data provide a resolution to some of the opposing
585 viewpoints around mosaicism. While debate on other aspects of PGT-A will continue, we
586 suggest a combination of the mosaicism registry data with the modelling presented in this
587 study should inform the decision-making process when a mosaic result is returned from an
588 embryo biopsy. What we have demonstrated is that although a biopsy result is imperfect, it
589 is nonetheless informative in prioritising embryos for transfer whether a 100% euploid,
590 100% aneuploid or mosaic result is obtained. When navigating hazards, even a blurred map
591 is useful.

592 **Acknowledgements**

593 The authors acknowledge the use of the High-Performance Computing Facility (Ceres) and
594 its associated support services at the University of Essex in the completion of this work.

595 **Funding**

596 BMS is supported by HEFCE/UKRI funding (University of Essex). PJIE is supported by
597 HEFCE/UKRI funding (University of Kent).

598 **Competing interests**

599 DKG consults for, and has ongoing projects with, Care Fertility, Igenomix, Conceivable,
600 Cooper and London Women's Clinic. BMS, MV and PJIE have no competing interests to
601 declare.

602 **Data Availability**

603 Scripts used to generate analyses in this paper are available at
604 https://github.com/bmskinner/embryo_biopsy. The tessera package is available under the
605 open source GPL-3.0 license at <https://github.com/bmskinner/tessera>. IRMET data is
606 available on request.

607 **Authors' Contributions**

608 Conceptualisation, BMS, PE and DKG; Methodology, BMS and PE; Software and Validation,
609 BMS; Investigation, BMS and PE; Data Curation and Formal Analysis, BMS; Visualisation,
610 BMS; Supervision and Project Administration, BMS and DKG; Writing - Original Draft, BMS,

611 DKG and PE; Writing - Review and Editing, BMS, DKG, MV and PE; Resources, BMS and MV.

612 All authors gave final approval for publication.

613 References

- 614 Barad DH, Albertini DF, Molinari E, Gleicher N. 2022. IVF outcomes of embryos with
615 abnormal PGT-A biopsy previously refused transfer: a prospective cohort study.
616 *Human Reproduction* **37**:1194–1206. doi:10.1093/humrep/deac063
- 617 Chang W, Cheng J, Allaire JJ, Sievert C, Schloerke B, Xie Y, Allen J, McPherson J, Dipert A,
618 Borges B. 2022. shiny: Web Application Framework for R.
- 619 Cornelisse S, Zagers M, Kostova E, Fleischer K, van Wely M, Mastenbroek S. 2020.
620 Preimplantation genetic testing for aneuploidies (abnormal number of
621 chromosomes) in in vitro fertilisation. *Cochrane Database Syst Rev* **9**:CD005291.
622 doi:10.1002/14651858.CD005291.pub3
- 623 Coticchio G, Barrie A, Lagalla C, Borini A, Fishel S, Griffin D, Campbell A. 2021. Plasticity of
624 the human preimplantation embryo: developmental dogmas, variations on themes
625 and self-correction. *Human Reproduction Update* **27**:848–865.
626 doi:10.1093/humupd/dmab016
- 627 Dahdouh EM, Balayla J, García-Velasco JA. 2015. Comprehensive chromosome screening
628 improves embryo selection: a meta-analysis. *Fertility and Sterility* **104**:1503–1512.
629 doi:10.1016/j.fertnstert.2015.08.038
- 630 Gleicher N, Albertini DF, Barad DH, Homer H, Modi D, Murtinger M, Patrizio P, Orvieto R,
631 Takahashi S, Weghofer A, Ziebe S, Noyes N. 2020. The 2019 PGDIS position
632 statement on transfer of mosaic embryos within a context of new information on
633 PGT-A. *Reprod Biol Endocrinol* **18**:57. doi:10.1186/s12958-020-00616-w
- 634 Gleicher N, Metzger J, Croft G, Kushnir VA, Albertini DF, Barad DH. 2017. A single
635 trophectoderm biopsy at blastocyst stage is mathematically unable to determine
636 embryo ploidy accurately enough for clinical use. *Reprod Biol Endocrinol* **15**:33.
637 doi:10.1186/s12958-017-0251-8
- 638 Gleicher N, Patrizio P, Brivanlou A. 2021. Preimplantation Genetic Testing for Aneuploidy - a
639 Castle Built on Sand. *Trends Mol Med* **27**:731–742.
640 doi:10.1016/j.molmed.2020.11.009
- 641 González Á. 2009. Measurement of Areas on a Sphere Using Fibonacci and Latitude–
642 Longitude Lattices. *Math Geosci* **42**:49. doi:10.1007/s11004-009-9257-x
- 643 Greco E, Minasi MG, Fiorentino F. 2015. Healthy Babies after Intrauterine Transfer of Mosaic
644 Aneuploid Blastocysts. *N Engl J Med* **373**:2089–2090. doi:10.1056/NEJMc1500421
- 645 Griffin DK, Brezina PR, Tobler K, Zhao Y, Silvestri G, Mccoy RC, Anchan R, Benner A, Cutting
646 GR, Kearns WG. 2022. The human embryonic genome is karyotypically complex, with
647 chromosomally abnormal cells preferentially located away from the developing
648 fetus. *Hum Reprod* **38**:180–188. doi:10.1093/humrep/deac238
- 649 Griffin DK, Ogur C. 2018. Chromosomal analysis in IVF: just how useful is it? *Reproduction*
650 **156**:F29–F50. doi:10.1530/REP-17-0683

- 651 Harton GL, Cinnioglu C, Fiorentino F. 2017. Current experience concerning mosaic embryos
652 diagnosed during preimplantation genetic screening. *Fertility and Sterility* **107**:1113–
653 1119. doi:10.1016/j.fertnstert.2017.03.016
- 654 Kim J, Tao X, Cheng M, Steward A, Guo V, Zhan Y, Scott RT, J alas C. 2022. The concordance
655 rates of an initial trophectoderm biopsy with the rest of the embryo using PGTseq, a
656 targeted next-generation sequencing platform for preimplantation genetic testing-
657 aneuploidy. *Fertility and Sterility* **117**:315–323. doi:10.1016/j.fertnstert.2021.10.011
- 658 Leigh D, Cram DS, Rechitsky S, Handyside A, Wells D, Munne S, Kahraman S, Grifo J, Katz-
659 Jaffe M, Rubio C, Viotti M, Forman E, Xu K, Gordon T, Madjunkova S, Qiao J, Chen Z-J,
660 Harton G, Gianaroli L, Simon C, Scott R, Simpson JL, Kuliev A. 2022. PGDIS position
661 statement on the transfer of mosaic embryos 2021. *Reproductive BioMedicine*
662 *Online*. doi:10.1016/j.rbmo.2022.03.013
- 663 Lin P-Y, Lee C-I, Cheng E-H, Huang C-C, Lee T-H, Shih H-H, Pai Y-P, Chen Y-C, Lee M-S. 2020.
664 Clinical Outcomes of Single Mosaic Embryo Transfer: High-Level or Low-Level Mosaic
665 Embryo, Does It Matter? *Journal of Clinical Medicine* **9**:1695.
666 doi:10.3390/jcm9061695
- 667 Mantikou E, Wong KM, Repping S, Mastenbroek S. 2012. Molecular origin of mitotic
668 aneuploidies in preimplantation embryos. *Biochimica et Biophysica Acta (BBA) -*
669 *Molecular Basis of Disease*, Molecular Genetics of Human Reproductive Failure
670 **1822**:1921–1930. doi:10.1016/j.bbadis.2012.06.013
- 671 McCoy RC. 2017. Mosaicism in preimplantation human embryos: when chromosomal
672 abnormalities are the norm. *Trends Genet* **33**:448–463.
673 doi:10.1016/j.tig.2017.04.001
- 674 Munné S, Kaplan B, Frattarelli JL, Child T, Nakhuda G, Shamma FN, Silverberg K, Kalista T,
675 Handyside AH, Katz-Jaffe M, Wells D, Gordon T, Stock-Myer S, Willman S, Acacio B,
676 Lavery S, Carby A, Boostanfar R, Forman R, Sedler M, Jackson A, Jordan K, Schoolcraft
677 W, Katz-Jaffe M, McReynolds S, Schnell V, Loy R, Chantilis S, Ku L, Kaplan B, Frattarelli
678 J, Morales A, Craig HR, Perloe M, Witz C, Wang W-H, Wilcox J, Norian J, Thompson
679 SM, Chen S, Garrisi J, Walmsley R, Mendola R, Shamma FN, Pang S, Sakkas D, Rooney
680 K, Sneeringer R, Glassner M, Stock-Myer S, Wilton L, Martic M, Coleman P, Shepley S,
681 Nakhuda G, Child T, Mounce G, Griffiths T, Feinberg RF, Blauer K, Reggio B, Rhinehart
682 R, Ziegler W, Ahmed H, Kratka S, Willman S, Rosenbluth E, Ivani K, Thyer A, Silverberg
683 K, Minter T, Miller C, Gysler M, Saunders P, Casper R, Conway D, Gordon T, Hughes
684 M, Large M, Blazek J, Munné S, Wells D, Fragouli E, Alfarawati S. 2019.
685 Preimplantation genetic testing for aneuploidy versus morphology as selection
686 criteria for single frozen-thawed embryo transfer in good-prognosis patients: a
687 multicenter randomized clinical trial. *Fertility and Sterility* **112**:1071-1079.e7.
688 doi:10.1016/j.fertnstert.2019.07.1346
- 689 Munné S, Spinella F, Grifo J, Zhang J, Beltran MP, Fragouli E, Fiorentino F. 2020. Clinical
690 outcomes after the transfer of blastocysts characterized as mosaic by high resolution
691 Next Generation Sequencing- further insights. *European Journal of Medical Genetics*
692 **63**:103741. doi:10.1016/j.ejmg.2019.103741
- 693 Navratil R, Horak J, Hornak M, Kubicek D, Balcova M, Tauwinklova G, Travník P, Vesela K.
694 2020. Concordance of various chromosomal errors among different parts of the
695 embryo and the value of re-biopsy in embryos with segmental aneuploidies.
696 *Molecular Human Reproduction* **26**:269–276. doi:10.1093/molehr/gaaa012

- 697 Popovic M, Dhaenens L, Taelman J, Dheedene A, Bialecka M, De Sutter P, Chuva de Sousa
698 Lopes SM, Menten B, Heindryckx B. 2019. Extended in vitro culture of human
699 embryos demonstrates the complex nature of diagnosing chromosomal mosaicism
700 from a single trophectoderm biopsy. *Human Reproduction* **34**:758–769.
701 doi:10.1093/humrep/dez012
- 702 R Core Team. 2022. R: A Language and Environment for Statistical Computing.
- 703 Ren Y, Yan Z, Yang M, Keller L, Zhu X, Lian Y, Liu Q, Li R, Zhai F, Nie Y, Yan L, Smith GD, Qiao J.
704 2022. Regional and developmental characteristics of human embryo mosaicism
705 revealed by single cell sequencing. *PLOS Genetics* **18**:e1010310.
706 doi:10.1371/journal.pgen.1010310
- 707 Roberts SA, Wilkinson J, Vail A, Brison DR. 2022. Does PGT-A improve assisted reproduction
708 treatment success rates: what can the UK Register data tell us? *J Assist Reprod Genet*
709 **39**:2547–2554. doi:10.1007/s10815-022-02612-y
- 710 Sanders KD, Silvestri G, Gordon T, Griffin DK. 2021. Analysis of IVF live birth outcomes with
711 and without preimplantation genetic testing for aneuploidy (PGT-A): UK Human
712 Fertilisation and Embryology Authority data collection 2016–2018. *J Assist Reprod*
713 *Genet* **38**:3277–3285. doi:10.1007/s10815-021-02349-0
- 714 Scott RT, Upham KM, Forman EJ, Zhao T, Treff NR. 2013. Cleavage-stage biopsy significantly
715 impairs human embryonic implantation potential while blastocyst biopsy does not: a
716 randomized and paired clinical trial. *Fertility and Sterility* **100**:624–630.
717 doi:10.1016/j.fertnstert.2013.04.039
- 718 Swinbank R, Purser J. 2006. Fibonacci grids: A novel approach to global modelling. *Quarterly*
719 *Journal of the Royal Meteorological Society* **132**:1769–1793. doi:10.1256/qj.05.227
- 720 Tiegs AW, Tao X, Zhan Y, Whitehead C, Kim J, Hanson B, Osman E, Kim TJ, Patounakis G,
721 Gutmann J, Castelbaum A, Seli E, Jallas C, Scott RT. 2021. A multicenter, prospective,
722 blinded, nonselection study evaluating the predictive value of an aneuploid diagnosis
723 using a targeted next-generation sequencing–based preimplantation genetic testing
724 for aneuploidy assay and impact of biopsy. *Fertility and Sterility* **115**:627–637.
725 doi:10.1016/j.fertnstert.2020.07.052
- 726 Tutt DAR, Silvestri G, Serrano-Albal M, Simmons RJ, Kwong WY, Guven-Ates G, Canedo-
727 Ribeiro C, Labrecque R, Blondin P, Handyside AH, Griffin DK, Sinclair KD. 2021.
728 Analysis of bovine blastocysts indicates ovarian stimulation does not induce
729 chromosome errors, nor discordance between inner-cell mass and trophectoderm
730 lineages. *Theriogenology* **161**:108–119. doi:10.1016/j.theriogenology.2020.11.021
- 731 Victor A, Ogur C, Thornhill A, Griffin DK. 2020. Preimplantation Genetic Testing for
732 Aneuploidies: Where We Are and Where We’re Going 25–48.
733 doi:10.1201/9780429445972-3
- 734 Victor AR, Griffin DK, Brake AJ, Tyndall JC, Murphy AE, Lepkowsky LT, Lal A, Zouves CG,
735 Barnes FL, McCoy RC, Viotti M. 2019. Assessment of aneuploidy concordance
736 between clinical trophectoderm biopsy and blastocyst. *Human Reproduction* **34**:181–
737 192. doi:10.1093/humrep/dey327
- 738 Viotti M. 2020. Preimplantation Genetic Testing for Chromosomal Abnormalities:
739 Aneuploidy, Mosaicism, and Structural Rearrangements. *Genes* **11**:602.
740 doi:10.3390/genes11060602
- 741 Viotti M, Greco E, Grifo JA, Madjunkov M, Librach C, Cetinkaya M, Kahraman S, Yakovlev P,
742 Kornilov N, Corti L, Biricik A, Cheng E-H, Su C-Y, Lee M-S, Bonifacio MD, Cooper AR,
743 Griffin DK, Tran DY, Kaur P, Barnes FL, Zouves CG, Victor AR, Besser AG, Madjunkova

744 S, Spinella F. 2023. Chromosomal, Gestational, and Neonatal Outcomes of Embryos
745 Classified as Mosaic by Preimplantation Genetic Testing for Aneuploidy. *Fertility and*
746 *Sterility*. doi:10.1016/j.fertnstert.2023.07.022

747 Viotti M, Victor AR, Barnes FL, Zouves CG, Besser AG, Grifo JA, Cheng E-H, Lee M-S,
748 Horcajadas JA, Corti L, Fiorentino F, Spinella F, Minasi MG, Greco E, Munné S. 2021.
749 Using outcome data from one thousand mosaic embryo transfers to formulate an
750 embryo ranking system for clinical use. *Fertil Steril* **115**:1212–1224.
751 doi:10.1016/j.fertnstert.2020.11.041

752 Wang L, Wang X, Liu Y, Ou X, Li M, Chen L, Shao X, Quan S, Duan J, He W, Shen H, Sun L, Yu
753 Y, Cram DS, Leigh D, Yao Y. 2021. IVF embryo choices and pregnancy outcomes.
754 *Prenatal Diagnosis* **41**:1709–1717. doi:10.1002/pd.6042

755 Wickham H. 2016. ggplot2: Elegant Graphics for Data Analysis. New York: Springer-Verlag.

756 Yan J, Qin Y, Zhao H, Sun Y, Gong F, Li R, Sun X, Ling X, Li H, Hao C, Tan J, Yang J, Zhu Y, Liu F,
757 Chen D, Wei D, Lu J, Ni T, Zhou W, Wu K, Gao Y, Shi Y, Lu Y, Zhang T, Wu W, Ma X, Ma
758 H, Fu J, Zhang J, Meng Q, Zhang H, Legro RS, Chen Z-J. 2021. Live Birth with or
759 without Preimplantation Genetic Testing for Aneuploidy. *N Engl J Med* **385**:2047–
760 2058. doi:10.1056/NEJMoa2103613

761 Yang M, Rito T, Metzger J, Naftaly J, Soman R, Hu J, Albertini DF, Barad DH, Brivanlou AH,
762 Gleicher N. 2021. Depletion of aneuploid cells in human embryos and gastruloids.
763 *Nat Cell Biol* **23**:314–321. doi:10.1038/s41556-021-00660-7
764

765

766 **Supplementary figures**

767

768 **Figure S1:** Accuracy of one 10-cell biopsy across embryo sizes and dispersals

769 **Figure S2:** Percentage of two 5-cell biopsies matching their embryo class across embryo

770 sizes and dispersals

771 **Figure S3:** Comparison of one 10-cell biopsy and two 5-cell biopsies.

772 **Figure S4:** Effect of dispersal and aneuploidy differences on ranking two embryos with

773 different aneuploidies by biopsy result.

774 **Figure S5:** Effect of dispersal and aneuploidy differences on ranking two embryos with

775 different aneuploidies by biopsy result, dispersing ties.

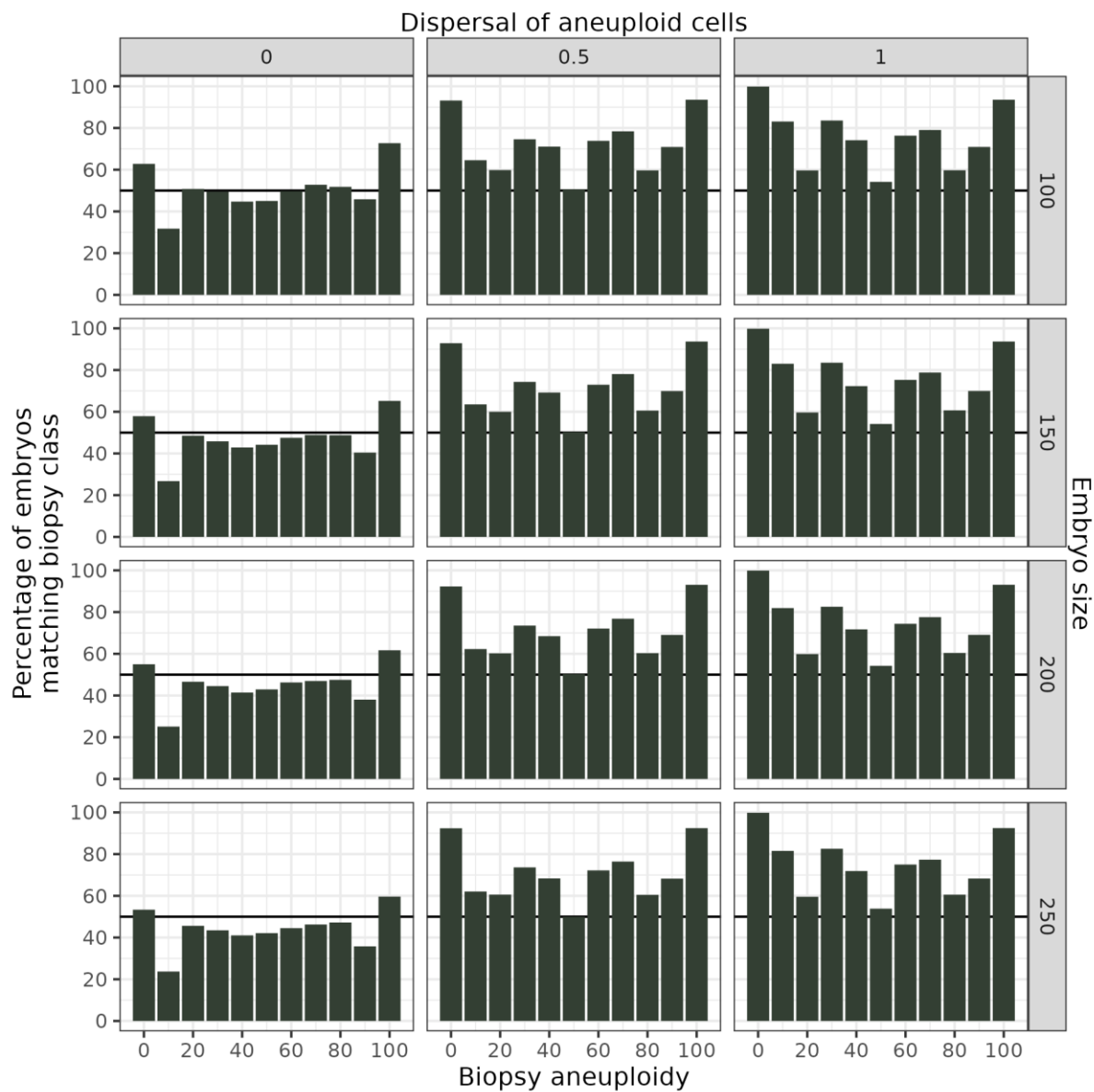
776 **Figure S6:** The ability to select the best k embryos from a pool of n when the pool contains

777 embryos with random levels of aneuploidies.

778 **Figure S7:** Logistic regression on outcomes shows a significant association with aneuploidy

779 level and with the type of chromosomal abnormality.

780

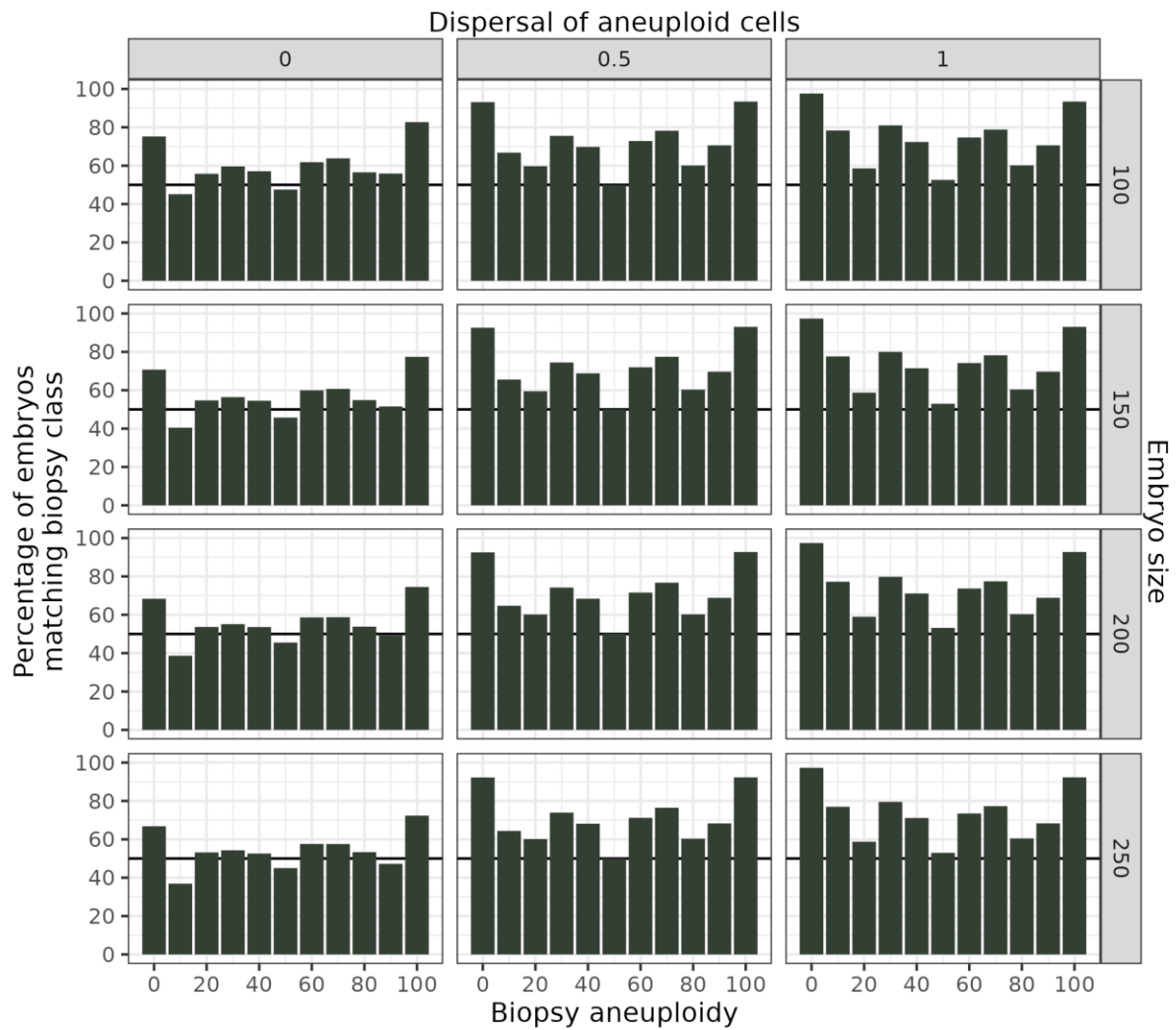


781
782 Figure S1: Accuracy of one 10-cell biopsy across embryo sizes and dispersals. Compare to
783 Figure 6 (one 5-cell biopsy) and Figures S2 and S3 (two 5-cell biopsies).

784

785

786



787

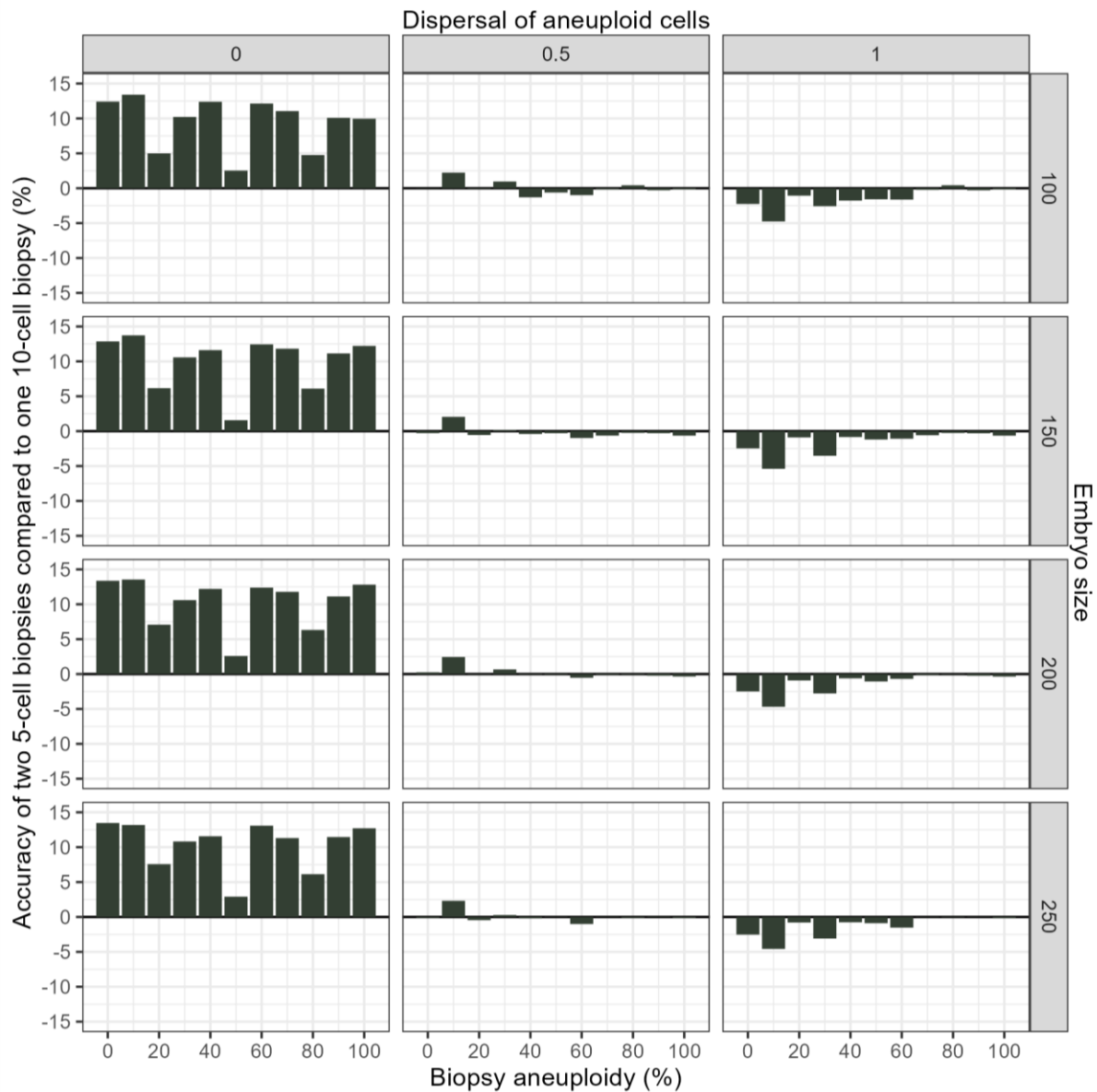
788 Figure S2: Percentage of two 5-cell biopsies matching their embryo class embryo sizes and

789 dispersals. Compare to the single 5-cell biopsy in Figure 6B and the single 10-cell biopsy in

790 Figure S1.

791

792



793

794 Figure S3: Comparison of one 10-cell biopsy and two 5-cell biopsies. Accuracy is increased

795 with two 5-cell biopsies for embryos with low dispersal by up to ~12 percentage points.

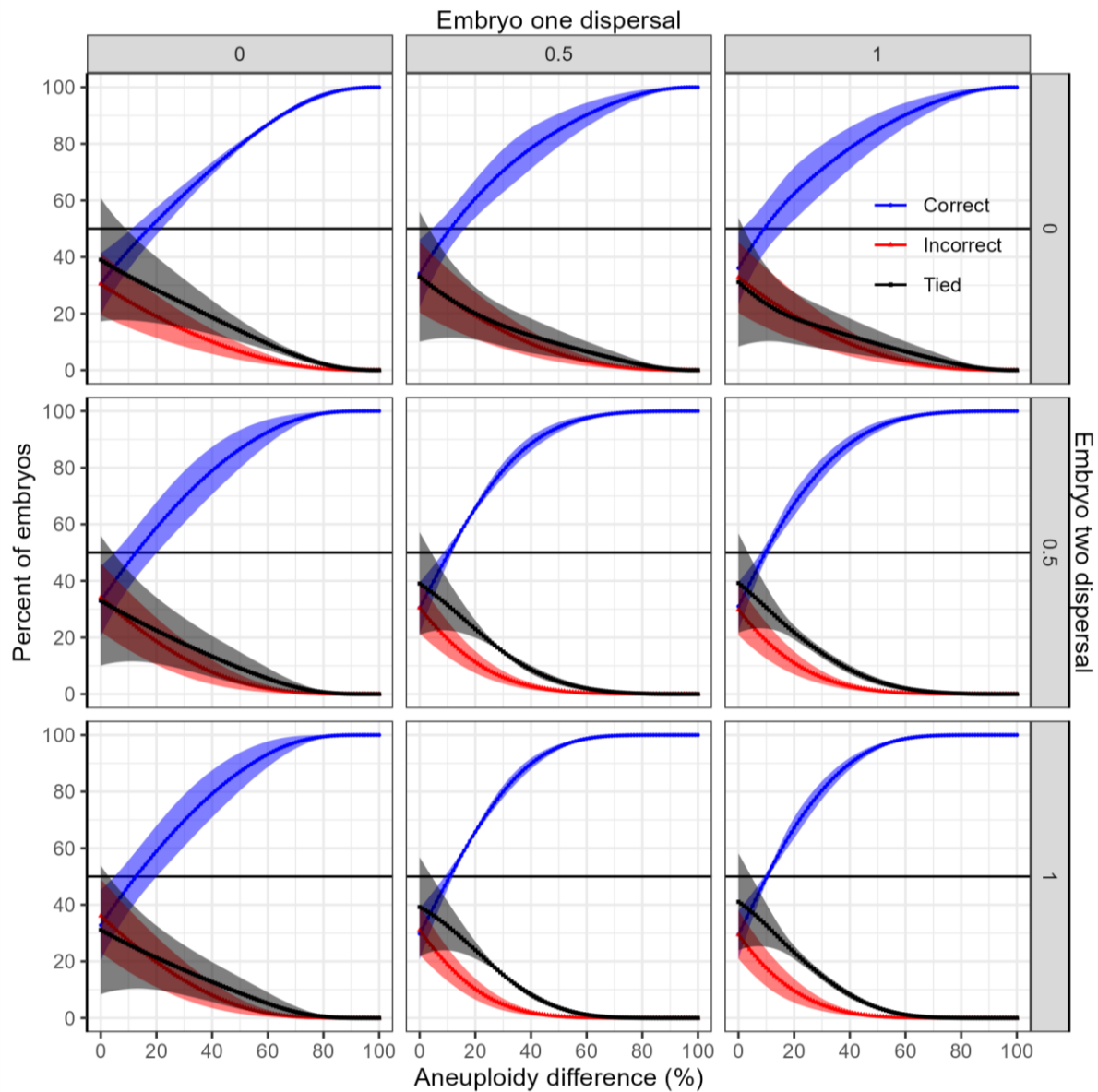
796 There are no benefits at higher dispersals. This chart is the difference between Figures S1

797 and S2.

798

799

800



801

802

Figure S4: Effect of dispersal and aneuploidy differences on ranking two embryos with

803

different aneuploidies by biopsy result. There is a greater than 50% chance of choosing the

804

correct rank order at all levels of dispersion as long as the absolute difference in aneuploidy

805

is greater than 20%. 100 replicate embryos were generated per aneuploidy and dispersal

806

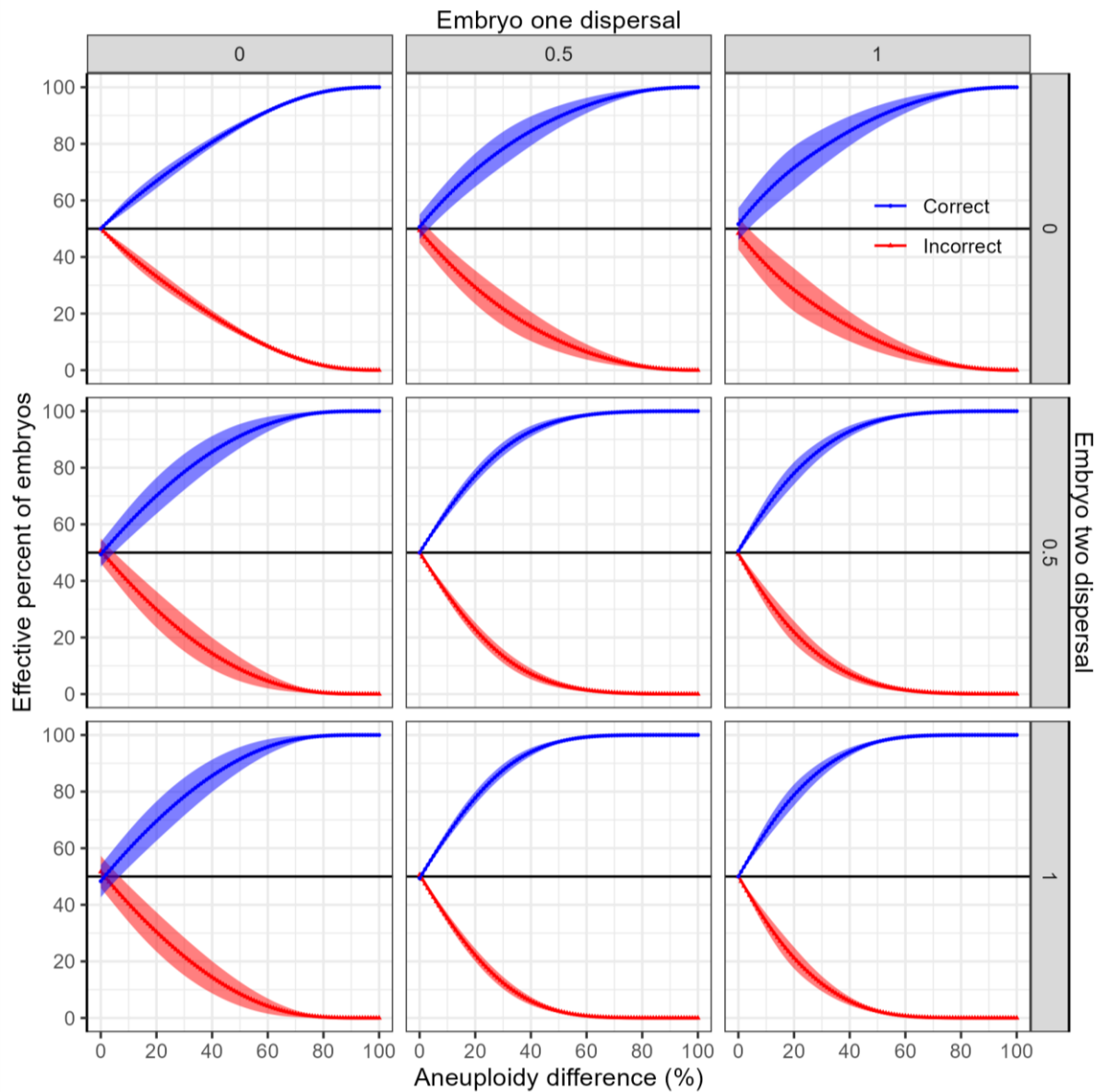
combination. Values show mean and standard deviation after aggregating by aneuploidy

807

difference. Top left panel is equivalent to Fig 7A.

808

809

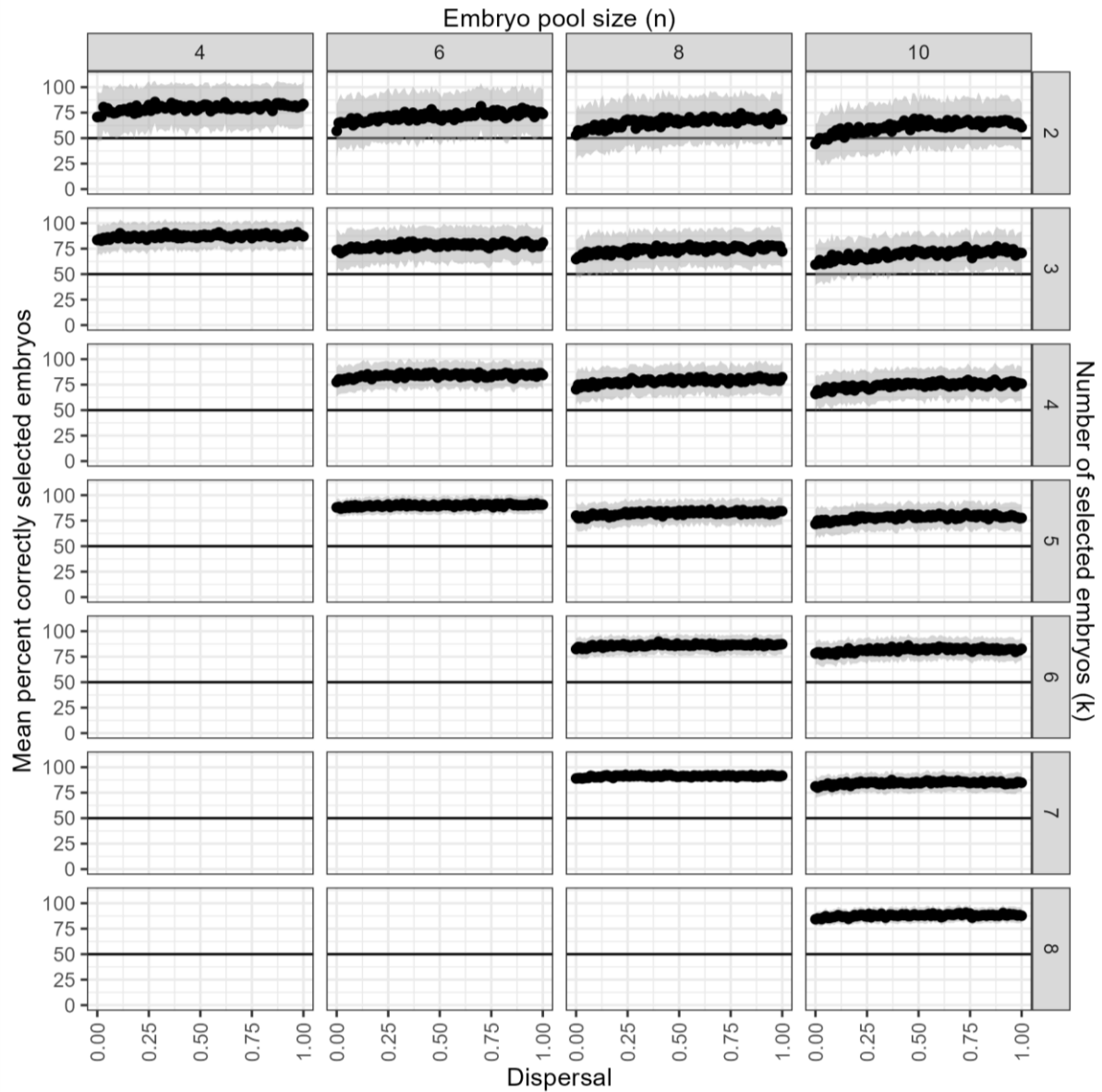


810

811 Figure S5: Contrast with Fig S4. Effect of dispersal and aneuploidy differences on ranking
812 two embryos with different aneuploidies by biopsy result. Biopsies with equal aneuploidy
813 (tied ranking) have been evenly split between correct and incorrect ranking, since a random
814 choice will be correct 50% of the time. Ranking two embryos based on biopsy outcomes will
815 always on average rank embryos better than chance if the embryos have unequal levels of
816 aneuploidy. Top left panel is equivalent to Fig 7B.

817

818



819

820 Figure S6: The ability to select the best k embryos from a pool of n when the pool contains

821 embryos with random levels of aneuploidies. Embryos are correctly selected better than

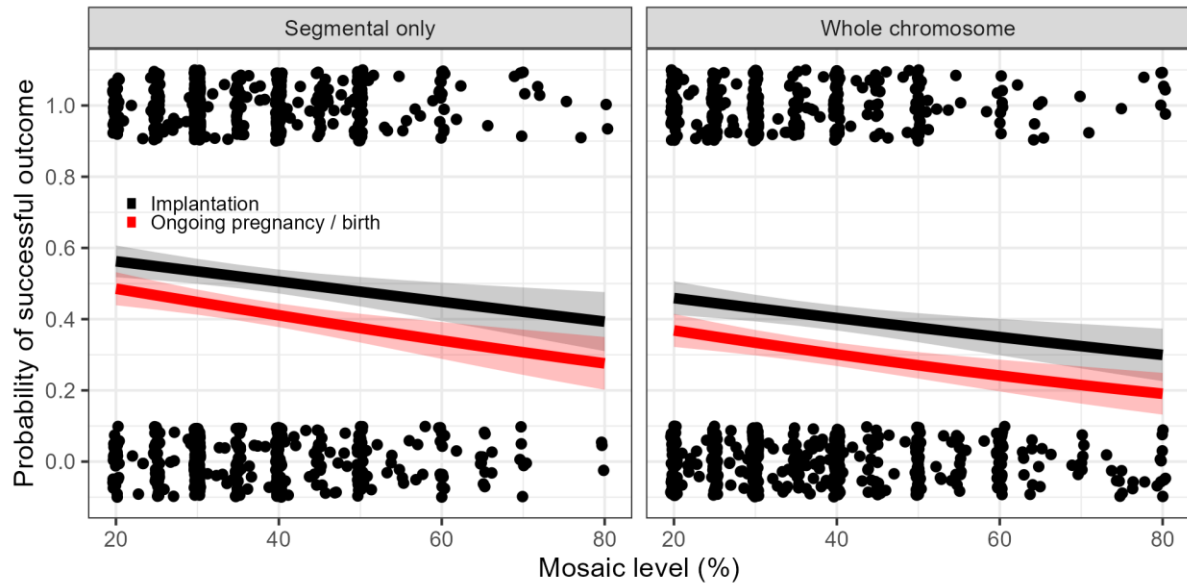
822 chance in almost all cases (the exception at large pool sizes and low selection sizes). All

823 embryos in the pool had 200 cells. Values are mean and standard deviation of 100

824 replicates. This figure complements Figure 8.

825

826



827

828 Figure S7: Logistic regression on outcomes shows a significant association with aneuploidy
829 level and with the type of chromosomal abnormality. Points show the individual embryos,
830 and are jittered for clarity. Lines show predicted outcomes for a given aneuploidy level from
831 the logistic regression models and the shaded areas show the standard error. Both
832 aneuploidy type and aneuploidy level have significant contributions to outcomes.

833

834