

Impact of the population age, testing and vaccination levels on the numbers of COVID-19 cases and deaths per capita and case fatality risks

Igor Nesteruk

Institute of Hydromechanics, National Academy of Sciences of Ukraine, Kyiv, Ukraine
SBIDER (Systems Biology & Infectious Disease Epidemiology Research) Centre at
University of Warwick, UK
inesteruk@yahoo.com

ABSTRACT

The population, governments and researchers show much less interest in the COVID-19 pandemic. However, many questions still need to be answered: why the much less vaccinated African continent has accumulated 15 times less deaths per capita than Europe? or why in 2023 the global value of the case fatality risk is almost twice higher than in 2022 and the UK figure is four times higher than the global one?

The averaged daily numbers of cases DCC and death DDC per million, case fatality risks DDC/DCC were calculated for 34 countries and regions with the use of John Hopkins University (JHU) datasets and possible linear and non-linear correlations with the averaged daily numbers of tests per thousand DTC , median age of population A , and percentages of vaccinations VC and boosters BC were investigated. Strong correlations between age and DCC and DDC values were revealed. One-year increment in the median age yielded 39.8 increase in DCC values and 0.0799 DDC increase in 2022 (in 2023 these figures are 5.8 and 0.0263, respectively). With decreasing of testing level DTC , the case fatality risk can increase drastically. DCC and DDC values increase with increasing the percentages of fully vaccinated people and boosters, which definitely increase for greater A . After removing the influence of age, no correlations between vaccinations and DCC and DDC values were revealed.

The presented analysis demonstrates that age is a pivot factor of visible (registered) part of the COVID-19 pandemic dynamics. Much younger Africa has registered less numbers of cases and death per capita due to many unregistered asymptomatic patients. Of great concern is the fact that COVID-19 mortality in 2023 in the UK is still at least 4 times

NOTE: This preprint reports new research that has not been certified by peer review and should not be used to guide clinical practice.
higher than the global value caused by seasonal flu.

Keywords: COVID-19 pandemic dynamics, daily numbers of cases and deaths per capita, case fatality risk, mathematical modeling of infection diseases, statistical methods.

Introduction

In the fourth year of the COVID-19 pandemic, the population and governments show much less interest in it. In particular, only 39% of countries reported at least one case to WHO in the period from 31 July to 27 August 2023, [1]. Thus accumulated numbers of cases CC and deaths DC per million show stabilization trends [2] and can be used to estimate the impact of different factors on the pandemic dynamics and to answer some important questions. In particular, why the much less vaccinated African continent has accumulated 36 times less cases and 15 times less deaths per capita than Europe (see [1, 2], lines 26 and 27 in Table 1)? Why in 2023 the global value of the case fatality risk is almost twice higher than in 2022 and the UK figure is four times higher than the global one, [3])?

We will apply the linear correlation analysis using accumulated relative characteristics: the numbers of cases and deaths per million (CC and DC), numbers of fully vaccinated people and boosters per hundred (VC and BC), tests per thousand (TC) available in files of John Hopkins University (JHU) [2] for all countries and regions.

The impact of various factors on the COVID-19 pandemic dynamics was estimated in many papers. Some examples can be found in [4-21]. In particular, CC values accumulated as of December 23, 2021 in Ukrainian regions and European countries showed no correlations with the size of population, its density, and the urbanization level, while DC and $CFR=DC/CC$ values reduce with the increase of the urbanization level in European countries, [18]. The increase of income (Gross Domestic Product per capita) leads to increase in CC , VC , BC , and TC values, but DC and CFR demonstrate opposite trend in European countries [19].

Many asymptomatic COVID-19 cases [22 - 26] can cause a big difference between visible (registered) and real pandemic dynamics [15, 27, 28]. That is why the higher testing level can increase the numbers of registered cases. Sometimes the testing level is too low to reveal all the cases predicted by theory. Probably such situation occurred in Japan in summer 2022, [29]. It was shown in [20], that the test per case ratio TC/CC (or test positivity rate CC/TC) is very important characteristic to control the pandemic. Very strong correlation between CC and TC was revealed for values accumulated before

August 1, 2022 in European and African countries, [19]. Since the TC values have stopped to be updated by JHU in different days of 2022, [2, 19], in this study, we will investigate a correlation between the averaged daily numbers of cases and test per capita DCC and DTC , respectively.

The severity of SARS-CoV-2 infection increases for older patients [16]; almost half of the infected children can be asymptomatic [30]. With the use of the statistical analysis of 2020 datasets it was shown that younger populations have less clinical cases per capita and it was predicted that “without effective control measures, regions with relatively older populations could see disproportionately more cases of COVID-19, particularly in the later stages of an unmitigated epidemic” [31]. This forecast was confirmed in [21] with the use of CC and DC datasets for 79 countries and regions including 10 so-called Zero-COVID countries [32]. It was shown that one-year increment in the median age yields 12,000-18,000 increase in CC values and 52-83 increase in DC values. To confirm the same trends in 2022 and 2023, we will investigate correlations between median age A and the averaged daily numbers of cases and deaths per capita DCC and DDC , respectively.

The high numbers of circulating SARS-CoV-2 variants [33-35] and re-infected persons [36-38] raise questions about the effectiveness of vaccinations. In particular, many scientists are inclined to think that the pandemic will not be stopped only through vaccination [39]. The non-linear correlations show that CC and DC values increase with the growth of the vaccination level VC , while CFR decreases, [19]. In this study, we will investigate correlations between VC and BC values registered in 2022 and 2023 and DCC , DDC and CFR figures. We will try also to answer the question why the number of cases and death per capita are higher in more vaccinated countries.

Materials and Methods

We will use the accumulated numbers of laboratory-confirmed COVID-19 cases CC_i and deaths DC_i per million, accumulated numbers of tests per thousand TC_i , accumulated numbers of fully vaccinated people VC_i and boosters BC_i per hundred for 33 countries (shown in Tables 1 and 2) and the world ($i = 1, 2, \dots, 34$). We have chosen the countries with highest numbers of accumulated cases and death (according to the recent WHO reports [1]), some other countries and regions listed in COVID-19 Data Repository by the Center for Systems Science and Engineering (CSSE) at Johns Hopkins University (JHU), [2] (version of file updated on September 28, 2023). Since Chinese statistics shows some contradictions (see, e.g., [40] or compare JHU files updated on September 28 and March 9, 2023), we have used only figures for Taiwan and Hong

Kong. In particular, in Table 1 we show corresponding CC_i and DC_i values from the March-9-version of JHU file (not available on September 28). The CC_i and DC_i values for Taiwan and Hong Kong for 2023 were calculated with the use of [41-44]. We ignore data from Ukraine and Russia to exclude the influence of military operations on the COVID-19 statistics. Nevertheless, the aggregated figures for large regions, continents and the world include information from these two countries and China (see lines 25-34 in Tables 1 and 2). To take into account the average age of population, we have used the information about the median ages A_i from [45, 46] (see Table 1).

To calculate the averaged daily numbers of cases DCC and deaths DDC per million in 2022 and 2023 we will use simple formulas:

$$DCC_i^{(j)} = \frac{CC_i^{(j+1)} - CC_i^{(j)}}{T_j}; \quad i = 1, 2, \dots, 34; \quad j = 1, 2 \quad (1)$$

$$DDC_i^{(j)} = \frac{CD_i^{(j+1)} - CD_i^{(j)}}{T_j}; \quad i = 1, 2, \dots, 34; \quad j = 1, 2 \quad (2)$$

where $T_1 = 365$ and $T_2 = 252$. The CFR values corresponding to 2022 and 2023 can be calculated as follows:

$$CFR_i^{(j)} = \frac{DC_i^{(j+1)} - DC_i^{(j)}}{CC_i^{(j+1)} - CC_i^{(j)}}; \quad i = 1, 2, \dots, 34; \quad j = 1, 2 \quad (3)$$

The total average CFR_i^* levels (during the entire period of the COVID-19 pandemic) can be calculated for every country and region:

$$CFR_i^* = \frac{DC_i^{(3)}}{CC_i^{(3)}}; \quad i = 1, 2, \dots, 34 \quad (4)$$

To estimate the average daily numbers of tests per thousand, we will use the formula:

$$DTC_i = \frac{TC_i^{(2)} - TC_i^{(1)}}{T_i^{(TC)}}; \quad i = 1, 2, \dots, 34 \quad (5)$$

Durations of corresponding periods in days $T_i^{(TC)}$ are listed in Table 2. Unfortunately, the testing data is not available for many countries and regions.

We will use the linear regression to calculate the regression coefficients r and the optimal values of parameters a and b for corresponding best fitting straight lines, [47]:

$$y = a + bx \quad (6)$$

where explanatory variables x will be A, DTC, VC, and BC and dependent variables y will be DCC, DDC, CFR, DTC, VC, and BC.

We will use also the F-test for the null hypothesis that says that the proposed linear relationship (6) fits the data sets. The experimental values of the Fisher function can be calculated using the formula:

$$F = \frac{r^2(n-m)}{(1-r^2)(m-1)} \quad (7)$$

where n is the number of observations (number of countries and regions taken for statistical analysis); $m=2$ is the number of parameters in the regression equation, [47]. The corresponding experimental values F have to be compared with the critical values $F_c(k_1, k_2)$ of the Fisher function at a desired significance or confidence level ($k_1 = m-1$, $k_2 = n-m$, see, e.g., [48]). If $F/F_c(k_1, k_2) < 1$, the correlation is not supported by the results of observations. The highest values of $F/F_c(k_1, k_2)$ correspond to the most reliable correlation.

We will use also non-linear regression:

$$y = cx^\gamma \quad (8)$$

which can be reduced to the linear one with the use of new variables, [19]:

$$z \equiv \log y = \log c + \gamma w, \quad w \equiv \log x \quad (9)$$

Table 1. Median age, accumulated numbers the COVID-19 cases and deaths per capita in 2021-2023

No. i	Country or region	Median age in years, [45, 46], A_i	Accumulated numbers of confirmed COVID-19 cases per million, [2]			Accumulated numbers of COVID-19 related deaths per million, [2]		
			December 31, 2021, $CC_i^{(1)}$	December 31, 2022, $CC_i^{(2)}$	September 10, 2023, $CC_i^{(3)}$	December 31, 2021, $DC_i^{(1)}$	December 31, 2022, $DC_i^{(2)}$	September 10, 2023, $DC_i^{(3)}$
1	USA	38.5	158249.8	293865.4	305763.9	2421.163	3199.789	3331.912
2	Taiwan	42.3	712.707	370284.7	428515.6*	35.575	638.377	795.2*
3	Hong Kong	45.6	1689.041	350605	389150.1**	28.442	1576.608	1895.5**
4	India	28.7	24583.31	31526.41	31751.74	339.465	374.479	375.414
5	France	41.7	134773	587831.2	603427.6	1921.267	2501.554	2599.316
6	Germany	47.8	84131.66	446707.5	461051.1	1411.686	1987.985	2098.829
7	Brazil	33.2	103401.9	168602.6	175183.5	2874.028	3221.972	3272.712
8	South Korea	43.2	12259.77	560818.7	667207.1	108.558	622.822	693.495
9	Japan	48.6	13987.61	234809.8	272715.7	148.388	463.995	602.606
10	Italy	46.5	101315.8	426312.9	440207.7	2324.744	3130.08	3242.127
11	UK	40.6	199110	358390.2	366026.1	2619.105	3201.28	3396.691
12	Turkey	32.2	110635.4	199255.1	199255.1	962.067	1188.394	1188.394
13	Mexico	29.3	31644.64	57030.53	60217.33	2382.841	2599.908	2623.915
14	Peru	29.1	67181.25	130816.2	132711.8	5949.676	6407.655	6504.19
15	Iran	31.7	69934.03	85386.89	85993	1485.84	1633.891	1652.796
16	Indonesia	31.1	15472.59	24391.22	24730.83	523.025	582.981	587.721
17	Canada	41.8	54674.47	116834.2	122158	779.054	1268.284	1382.081
18	South Africa	28.8	57543.97	67595.88	67995.81	1520.372	1712.495	1712.946
19	Egypt	24.1	3466.327	4644.856	4649.271	195.756	223.461	223.714
20	Israel	30.4	146252.2	491245.2	511817.9	874.061	1235.475	1340.353
21	Nigeria	18.6	1105.114	1219.221	1311.295	13.865	14.437	14.437
22	Australia	37.5	14004.71	412017.8	442814.2	93.325	680.587	900.471
23	New Zealand	37.2	2650.961	396786	458570.6	9.836	449.541	635.259
24	Vietnam	31.9	17632.27	117379.7	118378.2	329.922	439.835	440.039
25	European Union	44.4	119091.4	397673.6	408494.6	2033.132	2668.518	2763.03
26	Europe	42	116033.4	325338.4	334708.4	2102.787	2700.244	2788.427
27	Africa	18	6904.119	9111.662	9201.963	160.421	181.186	181.545
28	Asia	31	17928.47	58153.69	63664.54	266.155	325.065	345.988
29	North America	35	106779.6	199059.8	207318.4	2040.378	2580.998	2670.316
30	South America	31	91280.98	152849.9	157558.3	2730.093	3071.714	3104.744
31	High income	No data	107262	322668.1	340229.5	1632.993	2214.069	2320.501

	countries								
32	Upper middle income countries	No data	33103.88	89499.82	96734.09	871.032	1016.661	1055.513	
33	Lower middle income countries	No data	19114.67	28098.46	28385.07	345.868	387.735	390.133	
34	The world	30.5	35792.14	91468.7	96645.07	686.398	842.509	872.575	

* values calculated with the use of [41, 42]; ** values calculated with the use of [43, 44]

Table 2. Accumulated numbers the tests per capita and percentage of fully vaccinated people and boosters in 2021-2023, [2].

No., I	Country or region	Accumulated numbers of tests per thousand $TC_i^{(j)}$, corresponding dates and number of days $T_i^{(TC)}$					Numbers of fully vaccinated people per hundred as of:		Numbers of boosters per hundred as of:	
		$TC_i^{(1)}$	Date in 2021	$TC_i^{(2)}$	Date in 2022	$T_i^{(TC)}$ days	July 1, 2022 $VC_i^{(1)}$	July 1, 2023 $VC_i^{(2)}$	July 1, 2022 $BC_i^{(1)}$	July 1, 2023 $BC_i^{(2)}$
1	USA	2155.384	Dec 31	2708.533	Jun 18	169	67.33	69.47 ²³	37.91	40.08 ⁸
2	Taiwan	208.248	Dec 31	545.749	Jun 22	173	81.52	87	72.89	106.4
3	Hong Kong	4615.889	Dec 31	6594.993	May 24	144	86.21	90.81	60.36	94.91
4	India	481.597	Dec 31	609.938	Jun 21	172	64.58	67.17	3.15	16.04
5	France	2908.831	Dec 31	4126.754	Jun 18	169	78.14	78.44	58.86	70.34
6	Germany	1108.669	Dec 26	1574.021	Jun 12	168	76.04	76.24 ²⁰	68.6	77.72 ²⁰
7	Brazil	308.411	Dec 31	330.912	March 11	70	78.52	81.82 ¹⁷	49.7	58.7 ¹⁷
8	South Korea	874.47	Dec 31	1934.578	Jun 15	166	85.48	85.64 ²⁵	73.01	79.76 ¹⁴
9	Japan	224.641	Dec 31	429.37	Jun 22	173	82.6	83.4 ²²	64.04	141.72 ²²
10	Italy	2365.578	Dec 31	3795.998	Jun 22	173	81.14	81.22	69.66	80.88
11	UK	5845.841	Dec 31	7480.121	May 19	139	74.36	75.19 ¹⁰	59.26	59.81 ⁹
12	Turkey	1403.53	Dec 31	1924.668	May 31	151	62.21 ⁶	62.31 ¹³	43.22 ⁶	48.54 ¹³
13	Mexico	95.052	Dec 31	122.879	Jun 18	169	62.7 ³	64.19 ¹¹	41.65 ³	44.73 ¹²
14	Peru	646.299	Dec 31	859.283	April 05	95	81.44	84.21	61.41	90.41
15	Iran	477.494	Dec 31	594.485	Jun 01	152	65.34 ²	66.15 ²⁹	31.11 ²	32.27 ²⁹
16	Indonesia	155.199	Dec 31	217.363	March 21	80	61.18 ³⁰	63.48 ²⁷	17.86 ³⁰	24.99 ²⁷
17	Canada	1380.218	Dec 31	1629.606	Jun 06	157	81.79	82.6 ¹⁵	57.41	79.14 ¹⁵
18	South Africa	357.471	Dec 31	431.667	Jun 22	173	31.83	35.13 ²⁶	5.79	7.36 ²⁶
19	Egypt	No data		109.415	May 01		33.6 ⁵	38.15 ²⁴	5.03 ⁵	13.71 ²⁴

20	Israel	3637.259	Dec 31	5573.137	Jun 22	173	65.09	65.19 ²¹	56.45	61.03 ²¹
21	Nigeria	17.916	Dec 26	24.74	Jun 22	178	9.6 ⁴	31.94 ¹⁶	0.54 ⁴	5.63 ¹⁶
22	Australia	2120.241	Dec 31	2830.525	Jun 22	173	82.7 ³	82.7 ¹⁸	62.19	75.6 ¹⁵
23	New Zealand	1087.221	Dec 31	1416.09	Jun 23	174	79.34	80.66 ¹⁹	52.95	68.81 ¹⁹
24	Vietnam	765.759	Dec 30	880.538	Jun 20	172	81.67 ⁷	87.55 ²⁸	57.03 ¹	59.05 ²⁸
25	European Union	No data		No data			72.56	72.86	52.15	62.09
26	Europe	No data		No data			65.26	66.21	40.44	48.22
27	Africa	No data		No data			17.89	31.36	2.1	6.4
28	Asia	No data		No data			70.16	73.22	28.35	38.23
29	North America	No data		No data			63.72	65.7	37.23	41.9
30	South America	No data		No data			74.75	77.12	47.5	58.31
31	High income countries	No data		No data			73.18	74.3	51.83	66.37
32	Upper middle income countries	No data		No data			77.15	78.74	45.55	49.97
33	Lower middle income countries	No data		No data			53.28	59.36	9.17	19.35
34	The world	No data		No data			60.07	64.66	26.58	34.93

Figures corresponding to different days in 2022:

May: ¹ - 18;

June: ² - 1; ³ -17; ⁴ - 19; ⁵ - 29; ⁶ - 30; ³⁰ - 21;

July: ⁷ - 7;

September: ⁸ - 1; ⁹ - 4; ¹⁰ - 11;

October: ¹¹ - 7;

November: ¹² - 18; ¹³ - 22;

December: ¹⁴ - 12.

Figures corresponding to different days in 2023:

February: ¹⁵ - 2;

March: ¹⁶ - 19; ¹⁷ - 22; ¹⁸ - 24;

April: ¹⁹ - 4; ²⁰ - 7;

May: ²¹ - 4; ²² - 7; ²³ - 9; ²⁴ - 21; ²⁵ - 26;

June: ²⁶ - 4; ²⁷ - 6; ²⁸ - 30;

July: ²⁹ - 4.

Results

The results of calculations with the use of formulas (1)-(5) are listed in Table 3 and shown in Figures 1-3 versus median age, testing level DTC , percentage of fully vaccinated persons $VC_i^{(1)}$ (for 2022) and $VC_i^{(2)}$ (for 2023), and numbers of boosters per hundred $BC_i^{(1)}$ (for 2022) and $BC_i^{(2)}$ (for 2023). The averaged daily numbers of cases decreased drastically in 2023 in comparison with corresponding values in 2022 (compare $DCC^{(2)}$ and $DCC^{(1)}$ figures in Table 3 or “triangles” and “circles” in Fig. 1; the only exception is Nigeria). The global average daily number of cases has diminished

7.4 times in 2023 (see the last row of Table 3). Turkey has stopped to show new cases in 2023. USA, China, Japan do not report any COVID-19 cases and related deaths since May, 15, 2023, [1].

In 2023 the averaged daily numbers of deaths significantly decreased in all countries and regions (compare $DDC^{(2)}$ and $DDC^{(1)}$ values in Table 3 or “triangles” and “circles” in Fig. 2), yielding 3.6 times decrease in global DDC figures (see the last row of Table 3). Seasonal global influenza mortality is between 294 and 518 thousand in the period from 2002 to 2011, [49]. After dividing the presented figures over the world population 8060.5 million [45] and 365 days, the corresponding averaged daily number of deaths per million $DDC_{(infl)}$ will range between 0.1 and 0.18. The global value of $DDC_{34}^{(2)} = 0.1193$ is comparable with the influenza mortality, but in 2023 in many countries (including the UK) the corresponding $DDC^{(2)}$ values are much higher than $DDC_{(infl)}$ (see Table 3).

The global case fatality risk in 2023 is approximately twice higher than in 2022 despite of the increase in percentages of fully vaccinated people and boosters (see the last rows of Tables 2 and 3). In 2023 the CFR values were lower only in India, South Korea, Mexico, South Africa, Nigeria, Vietnam and Africa (compare corresponding columns in Table 3). There are countries with drastic growth of the CFR values in 2023 in comparison with 2022 (for example, almost 7 times for the UK and Peru). In 2023 only Egypt, Peru and Iran have higher case fatality risks than one in the UK (see Table 3; the markers corresponding to the UK are placed inside red circles in Figs. 1-3).

There are countries with traditional high levels of CFR . To smooth temporarily fluctuations, the total average CFR_i^* values (during the entire period of the COVID-19 pandemic) were calculated with the use of eq. (4), listed in Table 3 and shown in Fig. 3 by blue “stars”. The value CFR_{11}^* corresponding to the UK is only slightly higher than the global one. Many countries (e.g., the US, India, Mexico, Peru, Iran, Indonesia, Canada, South Africa, Egypt, Nigeria) have higher CFR_i^* values.

To remove the influence of the seasonal factors in the UK, let us calculate the values of $DCC_{11}^{(1*)}$, $DDC_{11}^{(1*)}$ and $CFR_{11}^{(1*)}$ for the period January 1, 2022 – May 19, 2022 and the same values $DCC_{11}^{(2*)}$, $DDC_{11}^{(2*)}$ and $CFR_{11}^{(2*)}$ and for the period January 1, 2023 – May 19, 2023 with the use of eqs. (1)-(4) and JHU datasets:

$$DCC_{11}^{(1*)} = (329252.5 - 199110) / 139 = 936.28;$$

$$DDC_{11}^{(1*)} = (2944.618 - 2619.105) / 139 = 2.34;$$

$$CFR_{11}^{(1*)} = (2944.618 - 2619.105) / (329252.5 - 199110) = 0.0025;$$

$$DCC_{11}^{(2*)} = (364587.9-358390.2)/139=44.59;$$

$$DDC_{11}^{(2*)} = (3370.043-3201.28)/139=1.214;$$

$$CFR_{11}^{(2*)} = (3370.043-3201.28)/(364587.9-358390.2)=0.0272;$$

In 2023 we can see huge decrease in the number of cases and moderate diminishing in the number of death. As the result, the case fatality risk in the beginning of 2023 exceeded the 2022 figure around 11 times. The reason could be explained by the fact that testing and reporting most cases we stopped in UK since April 2022. The only people who get recorded as cases are those that are tested in hospital, and even there not everyone with respiratory infections gets tested. The death data may include all those where COVID-19 is listed on the death certificate, which might even include those that have not tested positive but where the doctors suspect COVID-19.

Table 3. The results of calculations of average daily characteristics and the total average CFR levels with the use of eqs. (1)-(5).

No., I	Country or region	Average daily numbers of COVID-19 cases per million, $DCC^{(j)}$		Average daily numbers of deaths per million, $DDC^{(j)}$		Case Fatality Risks			Average daily numbers of tests per thousand, DTC_i
		2022	2023	2022	2023	2022, $CFR^{(1)}$	2023, $CFR^{(2)}$	Total, CFR^*	
1	USA	371.55	47.22	2.1332	0.5243	0.00574	0.0111	0.0109	3.27
2	Taiwan	1012.53	231.08	1.6515	0.6223	0.00163	0.00269	0.00186	1.95
3	Hong Kong	955.93	152.96	4.2416	1.2654	0.00444	0.00827	0.00487	13.74
4	India	19.02	0.89	0.0959	0.00371	0.00504	0.00415	0.0118	0.75
5	France	1241.26	61.89	1.5898	0.3879	0.00128	0.00627	0.00431	7.21
6	Germany	993.35	56.92	1.5789	0.4399	0.00159	0.00772	0.00455	2.77
7	Brazil	178.63	26.11	0.9533	0.2013	0.00534	0.00771	0.0187	0.32
8	South Korea	1502.90	422.18	1.4089	0.2804	0.000937	0.000664	0.00104	6.39
9	Japan	604.99	150.42	0.8647	0.5500	0.00142	0.00365	0.00221	1.18
10	Italy	890.40	55.14	2.2064	0.4446	0.00248	0.00806	0.00736	8.27
11	UK	436.38	30.30	1.5950	0.7754	0.00366	0.02559	0.00928	11.76
12	Turkey	242.79	0	0.6201	0	0.00255	-	0.00596	3.45
13	Mexico	69.55	12.65	0.5947	0.09527	0.00855	0.00753	0.0436	0.16
14	Peru	174.34	7.52	1.2547	0.3831	0.00720	0.05093	0.0490	2.24
15	Iran	42.34	2.41	0.4056	0.07502	0.00958	0.03119	0.0192	0.77
16	Indonesia	24.43	1.35	0.1643	0.01881	0.00672	0.01396	0.0238	0.78
17	Canada	170.30	21.13	1.3404	0.4516	0.00787	0.02138	0.0113	1.59

18	South Africa	27.53	1.59	0.5264	0.00179	0.01911	0.00113	0.0252	0.43
19	Egypt	3.22	0.0175	0.0759	0.001004	0.02351	0.05730	0.0481	-
20	Israel	945.19	81.64	0.9902	0.4161	0.00105	0.00510	0.00262	11.19
21	Nigeria	0.31	0.365	0.001567	0	0.00501	0	0.0110	0.0383
22	Australia	1090.44	122.21	1.6089	0.8726	0.00148	0.00713	0.00203	4.11
23	New Zealand	1079.82	245.18	1.2047	0.7370	0.00112	0.00301	0.00139	1.89
24	Vietnam	273.28	3.96	0.3011	0.0008095	0.00110	0.000204	0.00371	0.67
25	European Union	763.24	42.94	1.7408	0.3750	0.00228	0.00873	0.00676	-
26	Europe	573.43	37.18	1.6369	0.3499	0.00285	0.00941	0.00833	-
27	Africa	6.05	0.358	0.05689	0.001425	0.00941	0.00398	0.0197	-
28	Asia	110.21	21.86	0.1613	0.08303	0.00146	0.00380	0.00543	-
29	North America	252.82	32.77	1.4811	0.3544	0.00586	0.01082	0.0129	-
30	South America	168.68	18.68	0.9360	0.1311	0.00555	0.00702	0.0197	-
31	High income countries	590.15	69.68	1.5920	0.4223	0.00270	0.00606	0.00682	-
32	Upper middle income countries	154.51	28.71	0.3990	0.1541	0.00258	0.00537	0.0109	-
33	Lower middle income countries	24.61	1.14	0.1147	0.009516	0.00466	0.00837	0.0137	-
34	The world	152.54	20.54	0.4277	0.1193	0.00280	0.00581	0.00903	-

It must be noted, the growth of *CFR* in the UK occurred in the period of increasing the vaccination and booster levels, [2]:

	VC	BC
December 31, 2021	70.26%	50.5%
May 19, 2022	73.92%	58.67%
September 11, 2022	79.71%	75.19%

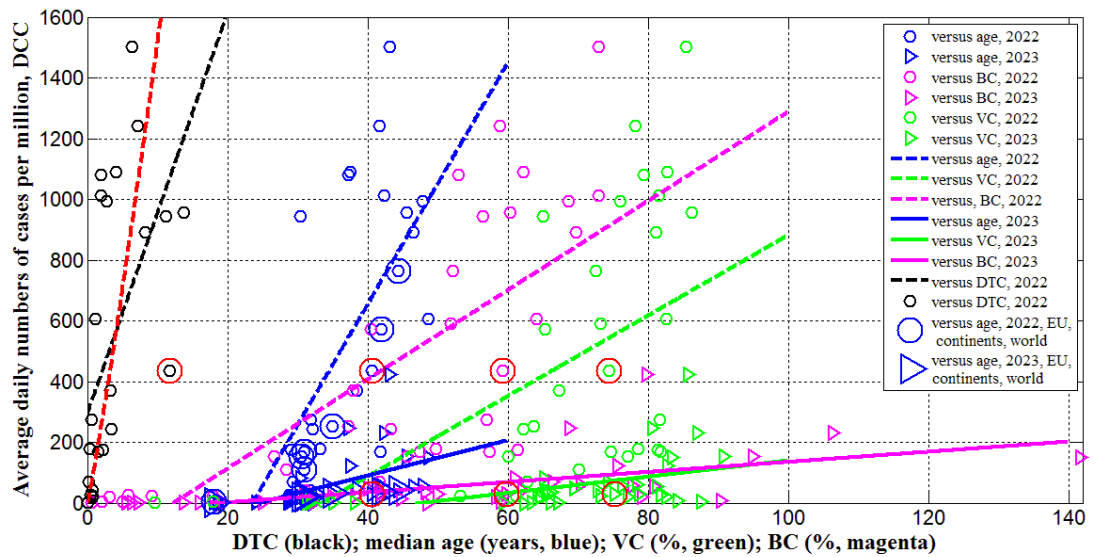


Fig. 1. Averaged daily numbers of COVID-19 cases per million in 2022 (“circles”) and 2023 (“triangles”) versus median age (blue) and levels of vaccinations (green), boosters (magenta) and testing (black). Best fitting lines are solid for 2023 and dashed for 2022. The UK data are located in red circles. The values corresponding to EU, continents and the world are duplicated by larger markers. The red curve represents the results of non-linear correlation (eq. (10)).

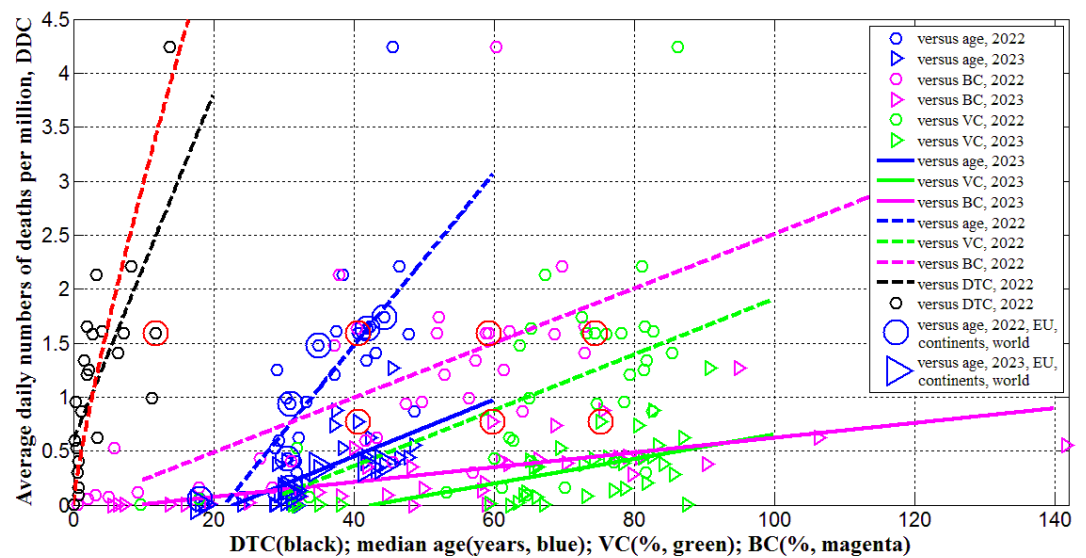


Fig. 2. Averaged daily numbers of COVID-19 related deaths per million in 2022 (“circles”) and 2023 (“triangles”) versus median age (blue) and levels of vaccinations (green), boosters (magenta) and testing (black). Best fitting lines are solid for 2023 and dashed for 2022. The UK data are located in red circles. The values corresponding to EU, continents and the world are duplicated by larger markers. The red curve represents the results of non-linear correlation (eq. (11)).

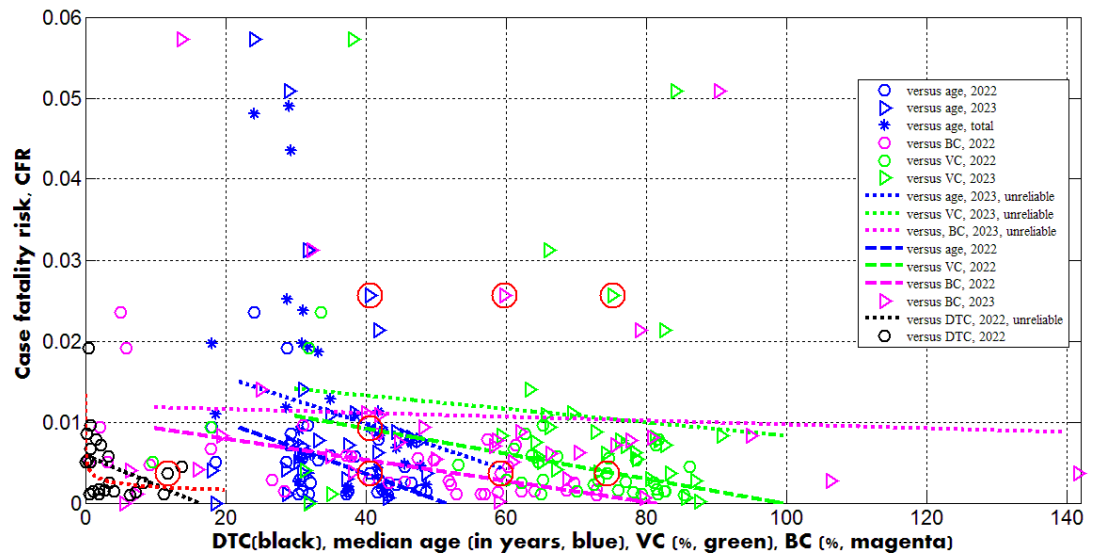


Fig. 3. Case fatality risks in 2022 (“circles”) and 2023 (“triangles”) versus median age (blue) and levels of vaccinations (green), boosters (magenta) and testing (black). Best fitting lines are solid for 2023 and dashed for 2022. The dotted lines correspond to the correlations that are not supported at the significance level 0.01. The UK data are located in red circles. The red curve represents the results of non-linear correlation (eq. (12)).

To investigate possible correlations between DCC , DDC and CFR values and explanatory variables A , DTC , $VC^{(1)}$, $VC^{(2)}$, $BC^{(1)}$, and $BC^{(2)}$, the linear regression (6) and Fisher test were used. The results of calculations of optimal values of parameters a and b , correlation coefficients and experimental values of the Fisher function F (eq. (7)) are listed in Table 4. The F values were compared with the critical ones $F_c(1, n-2)$ at the confidence level 0.01. The numbers of observations are different for different correlations due to the absence of data for some countries and regions.

Since many COVID-19 patients are asymptomatic [25-30], the high testing level (DTC or TC) could help to reveal more cases and COVID-19 related deaths. This trend was supported statistically (see rows 4 and 11 in Table 4 and black lines in Figs. 1 and 2). Nevertheless, the linear regression yields unacceptable non-zero values of parameter a , which mean that some cases and deaths could be revealed at zero testing level. To remove this discrepancy, the non-linear approach (8)-(9) was applied for the same countries listed in Table 3 ($n=23$).

Equations (10)-(12) represent the best fitting curves (see red lines in Fig. 1-3), correlation coefficients and experimental values of the Fisher function:

$$DCC^{(1)} = 118.7499 \cdot DTC^{1.106479}; \quad r = 0.81835; \quad F = 42.58 \quad (10)$$

$$DDC^{(1)} = 0.4428336 \cdot DTC^{0.828329}; \quad r = 0.76624; F = 29.86 \quad (11)$$

$$CFR^{(1)} = \frac{0.00372913}{DTC^{0.27815}}; \quad r = -0.46942; F = 5.94 \quad (12)$$

The values of r^2 and F for variables z and w are higher than for y and x (compare corresponding values in (10)-(12) and in rows 4, 11 and 18 of Table 4). The relationships (10) and (11) are supported at significance level 0.001 ($F_c(1,21)=14.6$). The similar very strong correlation between the numbers of cases and tests per capita accumulated in European and African countries as of August 1, 2022 was found in [19]:

$$CC = 80.099 \cdot TC^{1.02755}; \quad n=89; \quad r=0.9496; \quad F=767.6 \quad (13)$$

Nevertheless, 16 European countries with the highest testing level ($TC > 3000$) have demonstrated no correlation between CC and TC even at significance level 0.05, [19].

Only 5 countries and territories listed in Table 2 (Hong Kong, France, Italy, the UK, and Israel) had TC values higher than 3,000 in 2022. The $DCC^{(l)}$ values are rather high and vary from 436 to 1,241 in these countries (see Table 3). Nevertheless, many infectious persons were probably not detected. This is evidenced not only by the higher numbers of cases per capita in South Korea ($DCC_8^{(l)}=1,502.9$, Table 3) at lower testing level (compare corresponding DTC values in Table 3), but also by the results of total testing in some countries and institutions, which revealed many previously unregistered COVID-19 patients [24-26]. Taking the maximum of $DCC_8^{(j)}$ values (corresponding to South Korea) as estimations real number of cases per capita in 2022 and 2023, we can calculate the visibility coefficients

$$\beta_i^{(j)} = \frac{DCC_8^{(j)}}{DCC_i^{(j)}}; \quad j = 1, 2; \quad i = 1, 2, \dots, 34 \quad (14)$$

as the ratios of real and registered numbers of cases (similar relationship can be obtained using the accumulated numbers of cases per capita, [19]). For example, figures corresponding to the UK are $\beta_{11}^{(1)} = 3.4$; $\beta_{11}^{(2)} = 13.9$; Europe - $\beta_{26}^{(1)} = 2.6$; $\beta_{26}^{(2)} = 11.4$, and Africa - $\beta_{27}^{(1)} = 248.4$; $\beta_{27}^{(2)} = 1179.3$.

An experimental estimation of the visibility coefficient can be obtained from the results of total testing in Slovakia (89.5% of population was tested on October 31- November 7, 2020 and a number of previously undetected cases, equal to about 1.63% of the population was revealed, [24, 25]). Since the number of detected cases in Slovakia was approximately 1% of population [2], we can estimate the visibility coefficient $\beta \approx 2.63$ for that period. As of September 10, 2023 the ratio of CC values for South Korea and Slovakia ($667,207.1/330,868.413$, [2]) yields the visibility coefficient 2.02. The results of a random testing in two kindergartens and two schools in

Chmelnyskii (Ukraine) revealed the value of visibility coefficient 3.9 in December 2020, [26].

The generalized SIR models and algorithms of their parameter identification [27, 29, 50] allowed theoretical estimating of the visibility coefficients. In particular, values from 3.7 to 20.4 were obtained for Ukraine [15, 27] and 5.4 for Qatar [28] in different periods of the COVID-19 pandemic. The lack of appropriate testing did not allowed detecting the first SARS-CoV-2 cases, which probably appeared long before December 2019 [51]. In particular, theoretical estimates give the date of the appearance of the first case at the beginning of August 2019, [50].

Dependence (12) can be accepted at significance level 0.05 ($F_c(1,21) = 4.43$; a similar equation can be obtained by dividing (11) over (10)) and shows that the case fatality risk increases with diminishing of the testing level even in period of the high interest in the SARS-CoV-2 infection (as it was in 2022). In 2023, when the people paid attention to severe cases only and made tests correspondingly, *CFR* values can increase drastically. Therefore, one should probably not be afraid of a significant increase of the case fatality risk in the UK in 2023. Of much greater concern is the fact that COVID-19 mortality in this country ($DDC_{11}^{(2)} = 0.7754$, see Table 3) is still at least 4 times higher than the global value caused by seasonal flu, [49].

Equations (10) and (13) may give the illusion that the low number of cases per capita in Africa is due only to the low testing level typical for low-income countries (see [19]). The visibility coefficients and another characteristic - the ratio of the number of tests to the number of cases *DTS*- will allow us to understand the situation and draw the right conclusions. High *DTS* values mean that many persons surrounding the detected infectious patient (e.g., family members, colleagues, neighbors) were tested and isolated (this causes a decrease in the number of new infections, i.e. *DCC*). For example, very high tests per case ratios ($DTS > 100$) in Hong Kong in 2020 and 2021 allowed controlling the COVID-19 epidemic completely [20] (the smoothed daily numbers of new cases per million did not exceed 20, [2]). After January 18, 2022, the daily numbers of new cases started to increase, but the daily numbers of tests remained almost constant yielding drastically diminishing of the daily tests per case ratio [20] and very high *DCC* values in February-March 2022, [2].

It follows from (10) that the averaged daily test per case ratio:

$$DTS \equiv \frac{1000 \cdot DTC}{DCC^{(1)}} = \frac{13.34}{[DCC^{(1)}]^{0.0962}} \quad (15)$$

increases for countries with low DCC figures (in particular, for African ones, see Table 3). The similar relationship follows from (13) for the accumulated characteristic $TS=1000*TC/CC$. For example, DTS values (calculated using the information available in Table 3) are equal to 26.9 (the UK); 39.4 (India); 123.5 (Nigeria); 4.3 (South Korea); 1.95 (Japan) and demonstrate that the probability to miss an infectious person due to the lack of tests is much higher in Japan or South Korea than in Nigeria or India. During the severe pandemic wave in Japan in summer 2022, the daily numbers tests probably were not enough to confirm COVID-19 in patients with symptoms [29].

Therefore, the reason for the low number of registered cases per capita in Africa or in India should not be found in insufficient testing, but in large values of the visibility coefficients (14), which attribute to large numbers of asymptomatic infections. Since the severity of SARS-CoV-2 infection increases for older patients [16, 31] and almost half of the infected children can be asymptomatic [30], the regions with older population are expected to have much higher accumulated numbers of cases per capita, [31]. It was shown that one-year increment in the median age yields 12,000-18,000 increase in CC values [21]. Rows 1 and 5 in Table 4 and blue lines in Fig. 1 illustrate the same trend for DCC values. One-year increment in the median age increased DCC values by 39.8 in 2022 and by 5.8 in 2023.

The stronger correlations and same trends were obtained for the averaged daily numbers of deaths per capita DDC versus median age of population A (see rows 8 and 12 in Table 4 and blue lines in Fig. 2). One-year increment in the median age increases the DDC values by 0.0799 in 2022 and by 0.0263 in 2023. The characteristics calculated for large regions (EU, continents and the world) are very close to the best fitting blue lines (see large markers in Figs. 1 and 2). We can conclude that the young age of Africa ($A_{27} = 18$, see Table 1) is the main reason of very low numbers of cases and death per capita registered on this continent.

Opposite and much weaker age trends we can see for the case fatality risks (lines 15 and 19 in Table 4). The decrease of CFR values with increase of the age (supported only by the 2022 dataset) looks unexpected (especially taking into account the fact that in 2020 younger populations had less clinical cases per capita [31]). Probably, the reasons are higher vaccination levels and better medical treatment in the reach countries with high median age.

The numbers of cases and deaths per capita increase with increasing the percentages of fully vaccinated people and boosters (see rows 2, 3, 6, 7, 9, 10, 13, and 14 in Table 4 and green and magenta best fitting lines in Figs. 1 and 2). Re-infections in vaccinated persons are common [52, 53], but a very clear uprising trend with increasing VC and BC

values is unexpected despite the similar result for smoothed daily numbers of cases reported in [17] (JHU datasets with 7-days-smoothing corresponding to September 1, 2021 and February 1, 2023 were used for statistical analysis). Obtained trends could be a result of age influence; since the most vaccinated countries have higher A_i values (see Tables 1 and 2). We will discuss this correlation in the next Section. Another reason could be the introduction of special passports that removed restrictions for vaccinated persons. Many vaccinated people in countries with high VC and BC values started to visit crowded places, travel despite they can spread the infection. In many countries (in particular, in Ukraine) the vaccination procedure was associated with overcrowding in hospitals, which could contribute to the spread of the infection too.

As expected, the case fatality risks decrease with increasing the percentages of fully vaccinated people and boosters (see rows 16, 17, 20, and 21 in Table 4 and green and magenta best fitting lines in Fig. 3). Similar result was obtained in [17] with the use of JHU datasets for European and some other countries. In 2023, the decreasing trend was not supported by Fisher test. Probably, this is due to the more chaotic data. In particular, the different days correspond to $VC_i^{(2)}$ and $BC_i^{(2)}$ values listed in Table 2; no CFR value can be calculated for Turkey.

Table 4. Optimal values of parameters in eq. (1), correlation coefficients and the results of Fisher test applications.

Number	Variable x	Number of observations n	Correlation coefficient R	Optimal values of parameter a in eq. (6)	Optimal values of parameter b in eq. (6)	Experimental value of the Fisher function F , eq. (7), $m=2$	Critical value of Fisher function $F_c(l, n-2)$ for the confidence level 0.01, [29]	F/F_c
Correlations for the averaged daily numbers of COVID-19 cases in 2022, $DCC^{(1)}$								
1	versus age	31	0.7108	-937.43	39.767	29.616	7.77	3.81
2	versus $VC^{(1)}$	34	0.56202	-444.10	13.252	14.775	7.74	1.91
3	versus $BC^{(1)}$	34	0.7459	-181.28	14.687	40.136	7.74	5.19
4	versus DTC	23	0.5613	292.96	66.052	9.66	7.85	1.2
Correlations for the averaged daily numbers of COVID-19 cases in 2023, $DCC^{(2)}$								
5	versus age	31	0.5009	-143.583	5.8231	9.711	7.77	1.25

6	versus $VC^{(2)}$	34	0.4696	-128.811	2.6796	9.051	7.74	1.17
7	versus $BC^{(2)}$	34	0.5674	-32.3957	1.6692	15.195	7.74	1.96
Correlations for the averaged daily numbers of deaths in 2022, $DDC^{(1)}$								
8	versus age	31	0.7324	-1.7244	0.07993	33.553	7.77	4.32
9	versus $VC^{(1)}$	34	0.5553	-0.6756	0.02582	14.264	7.74	1.84
10	versus $BC^{(1)}$	34	0.6513	-0.02176	0.02529	23.579	7.74	3.05
11	versus DTC	23	0.7138	0.59477	0.16076	21.8	7.85	2.8
Correlations for the averaged daily numbers of deaths in 2023, $DDC^{(2)}$								
12	versus age	31	0.6793	-0.6040	0.02626	24.843	7.77	3.20
13	versus $VC^{(2)}$	34	0.5927	-0.4892	0.0114	17.332	7.74	2.24
14	versus $BC^{(2)}$	34	0.6903	-0.06489	0.006845	29.131	7.74	3.76
Correlations for the case fatality risks in 2022, $CFR^{(1)}$								
15	versus age	31	-0.5006	0.01631	-0.0003177	9.698	7.77	1.25
16	versus $VC^{(1)}$	34	-0.5901	0.01538	-0.0001553	17.092	7.74	2.21
17	versus $BC^{(1)}$	34	-0.5937	0.01053	-0.0001305	17.423	7.74	2.25
18	versus DTC	23	-0.3566	0.005909	-0.00036525	3.059	7.85	0.39
Correlations for the case fatality risks in 2023, $CFR^{(2)}$								
19	versus age	30	-0.1700	0.02122	-0.00028515	0.834	7.78	0.11
20	versus $VC^{(2)}$	33	-0.1008	0.01656	-8.2800e-05	0.318	7.75	0.041
21	versus $BC^{(2)}$	33	-0.0560	0.01203	-2.36499e-05	0.0975	7.75	0.013

Discussion

The explanatory variables A , DTC , $VC^{(1)}$, $VC^{(2)}$, $BC^{(1)}$, and $BC^{(2)}$, used in our analysis can be also dependent on each other. We have used the linear regression (6) and Fisher test to find correlations between DTC , $VC^{(1)}$, $VC^{(2)}$, $BC^{(1)}$, and $BC^{(2)}$ values and explanatory variable A . The results of calculations are listed in Table 5 and displayed in

Fig. 4. There are strong correlations between $VC^{(1)}$, $VC^{(2)}$, $BC^{(1)}$, and $BC^{(2)}$ versus median age of population A (see rows 2-5 in Table 5; green and magenta best fitting lines in Fig. 4). The correlation between A and DTC is supported at the confidence level 0.05 (see the first row in Table 5 and the black best fitting line in Fig. 4). The growth of the median age leads to the increase of testing level and the percentages of vaccinations and boosters. These correlations can be a result of higher incomes in aged countries and more vaccinations and boosters in older people.

Table 5. Correlations versus the median age of populations and purified levels of vaccinations. Optimal values of parameters in eq. (1), correlation coefficients and the results of Fisher test applications.

Number	Variable y	Number of observations n	Correlation coefficient R	Optimal values of parameter a in eq. (1)	Optimal values of parameter b in eq. (1)	Experimental value of the Fisher function F , eq. (3), $m=2$	Critical value of Fisher function $F_c(l, n-2)$ for the confidence level 0.01, [29]	F/F_c
Correlations versus median age of population, A								
1	DTC	23	0.4389	-4.7762	0.23290	5.011	7.85	0.64
2	$VC^{(1)}$	31	0.7673	2.3288	1.83706	41.515	7.77	5.34
3	$VC^{(2)}$	31	0.7348	17.5274	1.49084	34.036	7.77	4.38
4	$BC^{(1)}$	31	0.7933	-34.8469	2.21980	49.246	7.77	6.34
5	$BC^{(2)}$	31	0.7810	-51.3696	3.03961	45.339	7.77	5.84
Correlations versus “purified” numbers of fully vaccinated persons per hundred, VP								
6	$DCC^{(1)}$	31	0,03726	463,8161	1,35771	0,0403	7.77	0,0052
7	$DDC^{(1)}$	31	0,00318	1,0919	0,00022628	0,000294	7.77	3,8e-5
8	$CFR^{(1)}$	31	-0,3236	0,005114	-0,00013372	3,391	7.77	0,43
Correlations versus “purified” numbers of boosters per hundred, BP								
9	$DCC^{(1)}$	31	0,2969	463,792	9,75216	2,804	7.77	0,36
10	$DDC^{(1)}$	31	0,0989	1,0919	0,0063360	0,2864	7.77	0,037
11	$CFR^{(1)}$	31	-0,3625	0,005117	-0,00013502	4,386	7.77	0,56

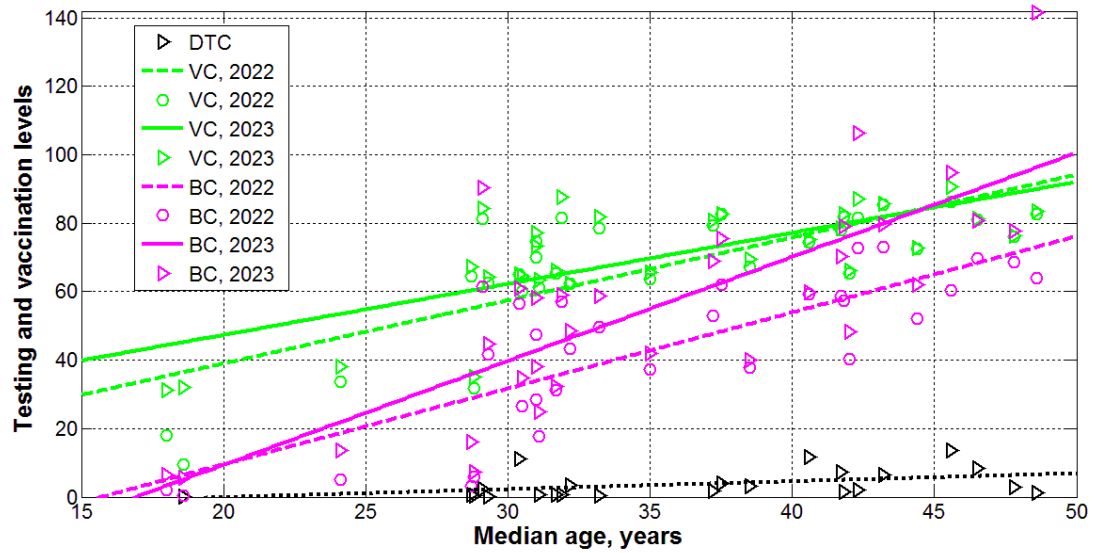


Fig. 4. Levels of testing (black), vaccinations (green) and boosters (magenta) in 2022 (“circles”) and 2023 (“triangles”) versus median age. Best fitting lines are solid for 2023 and dashed for 2022. The dotted line corresponds to the *DTC* correlation (supported at the significance level 0.05).

Now we can explain why the numbers of cases and deaths per capita can increase with increasing the percentages of fully vaccinated people and boosters (see rows 2, 3, 6, 7, 9, 10, 13, and 14 in Table 4 and green and magenta best fitting lines in Figs. 1 and 2)? Values $VC^{(1)}$, $VC^{(2)}$, $BC^{(1)}$, and $BC^{(2)}$ are not independent and definitely increase with the age. On the other hand, *DCC* and *DDC* values also increase with growth of A_i (see rows 1, 5, 8, and 12 in Table 4 and blue best fitting lines in Figs. 1 and 2). To remove the influence of age in correlations between vaccinations and *DCC* and *DDC* values, let us consider the “purified” variations of $VC^{(1)}$ and $BC^{(1)}$ (we limited ourselves only to 2022 with more reliable statistical data):

$$VP_i = VC_i^{(1)} - (2.3288 + 1.8376A_i); \quad i = 1, 2, \dots, 34 \quad (16)$$

$$BP_i = BC_i^{(1)} - (-34.8469 + 2.2198A_i); \quad i = 1, 2, \dots, 34 \quad (17)$$

To obtain the “purified” variations the percentages of vaccinations VP_i and boosters BP_i , we have excluded from variations $VC^{(1)}$ and $BC^{(1)}$ the values predicted by the by the best fitted lines listed in Table 5 (rows 2 and 4).

We have used the linear regression (6) and Fisher test to find correlations between *DCC*, *DDC* and *CFR* values and explanatory variables VP and BP . The results of calculations are listed in Table 5 (lines 6-11). No correlations were revealed at the

confidence level 0.01. Thus, the vaccinations and booster themselves do not increase the numbers of cases and death per capita. As expected, the case fatality risks reduce for higher values of VP and BP (see lines 8, 11 in Table 5), but at lower confidence level than versus $VC^{(1)}$ and $BC^{(1)}$ (see lines 16 and 17 in Table 4).

Conclusions

The averaged daily numbers of cases DCC and death DDC per million, case fatality risks DDC/DCC were calculated for 34 countries and regions with the use of John Hopkins University (JHU) datasets for numbers per capita accumulated in 2022 and 2023. Linear and non-linear approaches were used to find correlations with the averaged daily numbers of tests per thousand DTC , median age of population A , and percentages of vaccinations VC and boosters BC .

One-year increment in the median age yielded 39.8 increase in DCC values and 0.0799 in DDC figures in 2022 (in 2023 these increments are 5.8 and 0.0263, respectively). Decreasing testing level DTC can drastically increase the case fatality risk. DCC and DDC values grow with increasing the percentages of fully vaccinated people and boosters. Since VC and BC values definitely increase with at higher A , the influence of age was removed and no correlations between corrected variations of VC and BC and DCC and DDC values were obtained.

The presented analysis demonstrates that age is a pivot factor in visible (registered) part of the COVID-19 pandemic dynamics. Much younger Africa has registered less numbers of cases and death per capita due to many unregistered asymptomatic patients. Of great concern is the fact that COVID-19 mortality in 2023 in the UK is still at least 4 times higher than the global value caused by seasonal flu.

Clarification point: No humans or human data was used during this study

Data availability: All data generated or analyzed during this study are included in this text.

Competing interests: The author declares no competing interests connected with this paper.

Acknowledgement

The study was supported by the Solidarity Satellite Programme of Isaac Newton Institute for Mathematical Sciences, Cambridge, UK. The author is grateful to Professor Robin

Thompson, Professor Matt Keeling, and Oleksii Rodionov for their help in providing very useful information.

References

1. <https://covid19.who.int/data>. Retrieved November 23, 2023.
2. COVID-19 Data Repository by the Center for Systems Science and Engineering (CSSE) at Johns Hopkins University (JHU). <https://github.com/owid/covid-19-data/tree/master/public/data>. Retrieved November 23, 2023.
3. I. Nesteruk. Can we start to ignore the SARS-CoV-2 disease? Preprint posted in medRxiv 2023.09.18.; doi: <https://doi.org/10.1101/2023.09.18.23295709>
4. Byass, P. Eco-epidemiological assessment of the COVID-19 epidemic in China, January-February 2020. medRxiv 2020, doi:10.1101/2020.03.29.20046565.
5. Hamzah, F.; Binti, A.; Lau, C.; Nazri, H.; Ligot, D.V.; Lee, G.; Tan, C.L. CoronaTracker: Worldwide COVID-19 Outbreak Data Analysis and Prediction. Bull. World Health Organ. 2020, 1, 32.
6. Fanelli, D.; Piazza, F. Analysis and forecast of COVID-19 spreading in China, Italy and France. Chaos Solitons Fractals 2020, 134, 109761.
7. Distante, C.; Piscitelli, P.; Miani, A. Covid-19 Outbreak Progression in Italian Regions: Approaching the Peak by the End of March in Northern Italy and First Week of April in Southern Italy. Int. J. Environ. Res. Public Health 2020, 17, 3025.
8. KY Ng, MM Gui. COVID-19: Development of a robust mathematical model and simulation package with consideration for ageing population and time delay for control action and resusceptibility. Physica D: Nonlinear Phenomena. Volume 411, October 2020, 132599. <https://doi.org/10.1016/j.physd.2020.132599>
9. Davies NG, Klepac P, Liu Y, Prem K, Jit M; CMMID COVID-19 working group; Eggo RM. Age-dependent effects in the transmission and control of COVID-19 epidemics. Nat Med. 2020 Aug;26(8):1205-1211. doi: 10.1038/s41591-020-0962-9. Epub 2020 Jun 16. PMID: 32546824.
10. Alireza Mohammadi, Ievgen Meniaïlov, Kseniia Bazilevych, Sergey Yakovlev, Dmytro Chumachenko. Comparative study of linear regression and SIR models of COVID-19 propagation in Ukraine before vaccination. Radioelectronic and Computer Systems, 2021, Vol. 0, no. 3, pp. 5 – 18 . DOI <https://doi.org/10.32620/reks.2021.3.01>
11. Pardhan S., Drydak N. Associating the Change in New COVID-19 Cases to GDP per Capita in 38 European Countries in the First Wave of the Pandemic. Front Public Health. 2021 Jan 20;8:582140. doi: 10.3389/fpubh.2020.582140.
12. Chintala S., Dutta R., Tadmor D. COVID-19 spatiotemporal research with workflow-based data analysis. Infect Genet Evol. 2021 Mar;88:104701. doi: 10.1016/j.meegid.2020.104701.
13. Nesteruk I, Rodionov O. Impact of Vaccination and Testing Levels on the Dynamics of the COVID-19 Pandemic and its Cessation. J Biomed Res Environ Sci. 2021 Nov 23; 2(11): 1141-1147. doi: 10.37871/jbres1361
14. Rossman H., Shilo S., Meir T.,1,2, Gorfine M., Shalit U., Segal E. COVID-19 dynamics after a national immunization program in Israel. NATURE MEDICINE. Vol. 27, June 2021, pp. 1055–1061. <https://doi.org/10.1038/s41591-021-01337-2>
15. Nesteruk I. Influence of Possible Natural and Artificial Collective Immunity on New COVID-19 Pandemic Waves in Ukraine and Israel. Explor Res Hypothesis Med 2021; Published online: Nov 11, 2021. doi: 10.14218/ERHM.2021.00044.
16. Statsenko Y. et al. Impact of Age and Sex on COVID-19 Severity Assessed From Radiologic and Clinical Findings. Front. Cell. Infect. Microbiol., 25 February 2022. Sec. Clinical Microbiology Volume 11 – 2021. | <https://doi.org/10.3389/fcimb.2021.777070>

17. Nesteruk I, Rodionov O. Omicron Waves of the COVID-19 Pandemic and Efficacy of Vaccinations and Testing. *J Biomed Res Environ Sci*. 2022 May 24; 3(5): 588-594. doi: 10.37871/jbres1484, Article ID: JBRES1484, Available at: <https://www.jelsciences.com/articles/jbres1484.pdf>
18. Igor Nesteruk, Oleksii Rodionov, Szymon Walczak. Comparative and Statistical Analysis of the COVID-19 Pandemic Dynamics. Proceedings of the 2022 IEEE 41th International Conference on Electronics and Nanotechnology (ELNANO). October 10-14, 2022, Kyiv, Ukraine. pp. 379-384. DOI: [10.1109/ELNANO54667.2022.9927116](https://doi.org/10.1109/ELNANO54667.2022.9927116)
19. I. Nesteruk, O. Rodionov. The COVID-19 pandemic in rich and poor countries. Preprint. Research Square. Posted December 7, 2022. <https://doi.org/10.21203/rs.3.rs-2348206/v1>
20. Nesteruk I. Vaccination and testing as a means of ending the COVID-19 pandemic: comparative and statistical analysis. MedRxiv. Posted June 21, 2022. doi:<https://doi.org/10.1101/2022.06.16.22276531>
21. Nesteruk I., Keeling M. Population age as a key factor in the COVID-19 pandemic dynamics. Preprint. Research Square. Posted November 30, 2023. <https://doi.org/10.21203/rs.3.rs-3682693/v1>
22. Shang W, Kang L, Cao G, Wang Y, Gao P, Liu J, Liu M. Percentage of Asymptomatic Infections among SARS-CoV-2 Omicron Variant-Positive Individuals: A Systematic Review and Meta-Analysis. *Vaccines (Basel)*. 2022 Jun 30;10(7):1049. doi: 10.3390/vaccines10071049. PMID: 35891214; PMCID: PMC9321237.
23. Schreiber, P.W., Scheier, T., Wolfensberger, A. *et al.* Parallel dynamics in the yield of universal SARS-CoV-2 admission screening and population incidence. *Sci Rep* **13**, 7296 (2023). <https://doi.org/10.1038/s41598-023-33824-6>
24. <https://edition.cnn.com/2020/11/02/europe/slovakia-mass-coronavirus-test-intl/index.html>. Retrieved November 23, 2023.
25. <https://www.voanews.com/covid-19-pandemic/slovakias-second-round-coronavirus-tests-draws-large-crowds>. Retrieved November 23, 2023.
26. <https://podillyanews.com/2020/12/17/u-shkolah-hmelnyskogo-provely-eksperyment-z-testuvannyama-covid-19/>. Retrieved November 23, 2023.
27. Nesteruk I. Visible and real sizes of new COVID-19 pandemic waves in Ukraine *Innov Biosyst Bioeng*, 2021, vol. 5, no. 2, pp. 85–96. DOI: 10.20535/ibb.2021.5.2.230487
28. I. Nesteruk. The real COVID-19 pandemic dynamics in Qatar in 2021: simulations, predictions and verifications of the SIR model. *Semina: Ciências Exatas e Tecnológicas*. Vol 42, No 1Supl (2021) pp. 55-62. <https://www.uel.br/revistas/uel/index.php/semexatas/article/view/43992>
29. Igor Nesteruk. Improvement of the software for modeling the dynamics of epidemics and developing a user-friendly interface. *Infectious Disease Modelling*, Volume 8, Issue 3, 2023, Pages 806-821, ISSN 2468-0427, <https://doi.org/10.1016/j.idm.2023.06.003>.
30. Fowlkes A.L., Yoon S.K., Lutrick K., Gwynn L., Burns J., Grant L., Phillips A., Ellingson K., Ferraris M., LeClair M., et al. Effectiveness of 2-Dose BNT162b2 (Pfizer BioNTech) mRNA Vaccine in Preventing SARS-CoV-2 Infection Among Children Aged 5-11 Years and Adolescents Aged 12–15 Years -PROTECT Cohort, July 2021–February 2022. *MMWR Morb. Mortal. Wkly. Rep.* 2022;71:422–428. doi: 10.15585/mmwr.mm7111e1.
31. Davies NG, Klepac P, Liu Y, Prem K, Jit M; CMMID COVID-19 working group; Eggo RM. Age-dependent effects in the transmission and control of COVID-19 epidemics. *Nat Med.* 2020 Aug;26(8):1205-1211. doi: 10.1038/s41591-020-0962-9. Epub 2020 Jun 16. PMID: 32546824.
32. <https://en.wikipedia.org/wiki/Zero-COVID>. Retrieved November 23, 2023.
33. <https://www.who.int/activities/tracking-SARS-CoV-2-variants>. Retrieved November 30, 2023.
34. https://en.wikipedia.org/wiki/Variants_of_SARS-CoV-2. Retrieved September 13, 2023.

35. <https://www.cdc.gov/coronavirus/2019-ncov/variants/variant-classifications.html>. Retrieved September 13, 2023.
36. <https://coronavirus.health.ny.gov/covid-19-reinfection-data>. Retrieved September 13, 2023.
37. Guedes AR, Oliveira MS, Tavares BM, Luna-Muschi A, Lazari CDS, Montal AC, et al. Reinfection rate in a cohort of healthcare workers over 2 years of the COVID-19 pandemic. *Sci Rep*. 2023;13(1):712. doi: 10.1038/s41598-022-25908-6.
38. Flacco ME, Soldato G, Acuti Martellucci C, Di Martino G, Carota R, Caponetti A, et al. Risk of SARS-CoV-2 Reinfection 18 Months After Primary Infection: Population-Level Observational Study. *Front Public Health*. 2022;10:884121. doi: 10.3389/fpubh.2022.884121.
39. Lazarus, J.V., Romero, D., Kopka, C.J. *et al.* A multinational Delphi consensus to end the COVID-19 public health threat. *Nature* (2022). <https://doi.org/10.1038/s41586-022-05398-2>
40. Nesteruk, I. What is wrong with Chinese COVID-19 statistics? *Epidemiology Biostatistics and Public Health* 18(1):9-11, 2023. DOI: 10.54103/2282-0930/20637
41. <https://www.worldometers.info/coronavirus/country/taiwan/>. Retrieved September 30, 2023.
42. <https://www.worldometers.info/world-population/taiwan-population/>. Retrieved September 30, 2023.
43. <https://www.worldometers.info/world-population/china-hong-kong-sar-population/>. Retrieved September 30, 2023.
44. <https://www.worldometers.info/coronavirus/country/china-hong-kong-sar/>. Retrieved September 30, 2023.
45. <https://database.earth/population>. Retrieved September 30, 2023.
46. <https://www.visualcapitalist.com/mapped-the-median-age-of-every-continent/>. Retrieved September 30, 2023.
47. Draper NR, Smith H. *Applied regression analysis*. 3rd ed. John Wiley; 1998.
48. <https://onlinepubs.trb.org/onlinepubs/nchrp/cd-22/manual/v2appendixc.pdf>. Retrieved November 23, 2023.
49. Paget J, Spreeuwenberg P, Charu V, Taylor RJ, Iuliano AD, Bresee J, Simonsen L, Viboud C; Global Seasonal Influenza-associated Mortality Collaborator Network and GLaMOR Collaborating Teams*. Global mortality associated with seasonal influenza epidemics: New burden estimates and predictors from the GLaMOR Project. *J Glob Health*. 2019 Dec;9(2):020421. doi: 10.7189/jogh.09.020421. <https://jogh.org/documents/issue201902/jogh-09-020421.pdf>
50. Nesteruk I. COVID19 pandemic dynamics. Springer Nature, 2021, <https://link.springer.com/book/10.1007/978-981-33-6416-5>
51. Weinberger DM et al. Estimating the early death toll of COVID-19 in the United States. [Preprint.] MEDRXIV, 2020 Apr. <https://doi.org/10.1101/2020.04.15.2006643>
52. Guedes, A.R., Oliveira, M.S., Tavares, B.M. *et al.* Reinfection rate in a cohort of healthcare workers over 2 years of the COVID-19 pandemic. *Sci Rep* 13, 712 (2023). <https://doi.org/10.1038/s41598-022-25908-6>
53. Flacco M E et al. Risk of SARS-CoV-2 Reinfection 18 Months After Primary Infection: Population-Level Observational Study. *Front. Public Health*, 02 May 2022. *Sec. Infectious Diseases: Epidemiology and Prevention*. Volume 10 - 2022 | <https://doi.org/10.3389/fpubh.2022.884121>