

1 **The association between the gut microbiome and 24-hour** 2 **blood pressure measurements in the SCAPIS study**

3 Yi-Ting Lin^{1,2}, Sergi Sayols-Baixeras^{1,3}, Gabriel Baldanzi¹, Koen F. Dekkers¹, Ulf

4 Hammar¹, Diem Nguyen¹, Nynne Nielsen⁴, Aron C. Eklund⁴, Georgios Varotsis¹,

5 Jacob B. Holm⁴, H. Bjørn Nielsen⁴, Lars Lind⁵, Göran Bergström^{6,7}, J. Gustav

6 Smith^{8,9,10}, Gunnar Engström¹¹, Johan Ärnlöv^{12,13}, Johan Sundström^{5,14}, Marju Orho-

7 Melander¹¹, Tove Fall*¹

8

9 ¹Department of Medical Sciences, Molecular Epidemiology and Science for Life

10 Laboratory, Uppsala University, Uppsala, Sweden

11 ²Department of Family Medicine, Kaohsiung Medical University Hospital, Kaohsiung

12 Medical University, Taiwan

13 ³CIBER Cardiovascular diseases (CIBERCV), Instituto de Salud Carlos III, Madrid,

14 Spain

15 ⁴Clinical Microbiomics A/S, Copenhagen, Denmark

16 ⁵Department of Medical Sciences, Clinical Epidemiology, Uppsala University,

17 Uppsala, Sweden

18 ⁶Department of Molecular and Clinical Medicine, Institute of Medicine, Sahlgrenska

19 Academy, University of Gothenburg, Gothenburg, Sweden

NOTE: This preprint reports new research that has not been certified by peer review and should not be used to guide clinical practice.

1 ⁷Department of Clinical Physiology, Sahlgrenska University Hospital, Gothenburg,

2 Sweden

3 ⁸The Wallenberg Laboratory/Department of Molecular and Clinical Medicine,

4 Institute of Medicine, Gothenburg University and the Department of Cardiology,

5 Sahlgrenska University Hospital, Gothenburg, Sweden

6 ⁹Department of Cardiology, Clinical Sciences, Lund University and Skåne University

7 Hospital, Lund, Sweden

8 ¹⁰Wallenberg Center for Molecular Medicine and Lund University Diabetes Center,

9 Lund University, Lund, Sweden

10 ¹¹Department of Clinical Sciences, Lund University, Malmö, Sweden

11 ¹²Department of Neurobiology, Care Sciences and Society, Division of Family

12 Medicine and Primary Care, Karolinska Institute, Stockholm, Sweden

13 ¹³School of Health and Social Studies, Dalarna University, Falun, Sweden

14 ¹⁴The George Institute for Global Health, University of New South Wales, Sydney,

15 NSW, Australia

16

1 **Corresponding Author**

2 Tove Fall, PhD, Professor in Molecular Epidemiology

3 Department of Medical Sciences, Molecular Epidemiology

4 Uppsala University, EpiHubben, MTC-huset

5 75185, Uppsala, Sweden

6 E-mail: tove.fall@medsci.uu.se

7

8 **Keywords:** microbiome, blood pressure, hypertension

1 **Abstract**

2 **Background and Aims**

3 Large population-based studies on gut microbiota and hypertension have been
4 conducted using methods with low taxonomic resolution and office blood pressure.
5 This study aims to investigate the relationship between specific characteristics of the
6 gut microbiome and 24-hour blood pressure measurements.

7 **Methods and results**

8 The association of gut microbial species, determined by shotgun metagenomic
9 sequencing of fecal samples, with 24-hour ambulatory blood pressure measurements
10 was assessed in 4063 participants without antihypertensive medication from the
11 Swedish CARDioPulmonary bioImage Study. Multivariable-adjusted models identified
12 140 microbial species associated with at least one of the 24-hour blood pressure traits.
13 Notably, *Roseburia faecis*, *R. inulinivorans*, and *Dorea longicatena* were strongly
14 positively associated with mean systolic and diastolic blood pressure, while *Alistipes*
15 *communis* and *A. shahii* were inversely associated with diastolic blood pressure. An
16 enrichment of threonine degradation I, *Bifidobacterium* shunt, and lactate production
17 was observed in species associated with mean systolic and diastolic blood pressure.
18 Species positively associated with blood pressure were in general also positively

1 associated with secondary bile acids but negatively associated with primary bile acids
2 and vitamin A-related metabolites.

3 **Conclusions**

4 In this large cross-sectional analysis, we identified a group of gut microbial species and
5 microbial functions associated with blood pressure. Our findings provide insights into
6 the relation of the gut microbiome and blood pressure, which can lead to a new
7 understanding of the etiology of hypertension.

8

1 **Introduction**

2 Hypertension is estimated to have contributed to 10.8 million deaths globally in 2019
3 through its impact on cardiovascular and renal disease development.¹ Yet, our
4 understanding of hypertension pathophysiology is incomplete, although it has been
5 hypothesized that the gut microbiota affects the blood pressure (BP) regulation
6 mediated through microbiota-derived metabolites and interactions with the immune
7 system.² Evidence supporting the role of the microbiota in hypertension is based on
8 experimental and observational studies. Germ-free mice transplanted with fecal
9 material from hypertensive human donors showed higher systolic (SBP) and diastolic
10 BP (DBP) than mice transplanted with material from a normotensive donor.³ Plasma
11 metabolites derived or modified by the gut microbiota, including trimethylamine N-
12 oxide (TMAO) and short-chain fatty acids (SCFA), have been suggested to affect
13 blood pressure through chemosensory receptors.^{4,5,6}

14 In 4672 participants from the HEalthy Life In an Urban Setting (HELIUS) study,
15 where the gut microbiota was characterized using the 16S amplicon method, inverse
16 associations of SCFA-producing bacteria with SBP were observed.⁷ However,
17 findings were inconsistent across ethnicities. Another large study based on shallow
18 metagenomics sequencing in samples from 6953 participants of the FINRISK 2002
19 study identified mainly positive associations between 45 microbial genera and blood

1 pressure. Studies applying methods resulting in a higher resolution of the microbiome
2 are anticipated to provide more specific results.

3 Moreover, while SBP and DBP measured at the test centers constitute a snapshot
4 of BP, ambulatory blood pressure monitoring (ABPM) provides a more representative
5 measurement of SBP and DBP. ABPM is not affected by “white coat hypertension”
6 and it captures nocturnal BP. ABPM can also be used to estimate the variability of BP,
7 often defined as the standard deviation (SD) of SBP and DBP, and has been reported
8 as an independent risk factor for cardiovascular disease.⁸ However, there is a lack of
9 population-based studies investigating the association between the gut microbiota and
10 BP using high-resolution methods to assess the microbiota composition and functional
11 profile, as well as ABPM for capturing BP and BP variation.

12 Therefore, we aimed to investigate the association of the gut microbiome
13 composition measured at high resolution and functional profile with ABPM
14 measurements, as well as the association of plasma metabolites with species related to
15 ABPM measurements, in a large sample of participants without antihypertensive
16 medication.

1 **Methods**

2 **Study population**

3 The Swedish CARDioPulmonary bioImage Study (SCAPIS) cohort is a prospective
4 observational study with the baseline investigation conducted in 2013-2018, including
5 30 154 individuals invited from a random extract from the population register of
6 individuals aged 50–64 living in six counties across Sweden including 2-3 visits to the
7 respective study centers.⁹ We used data from the baseline investigation from the
8 Uppsala (n=5036) and Malmö (n=6251) centers, of which 4839 individuals in
9 Uppsala and 4980 in Malmö had available fecal metagenomics data, and where a
10 subset were provided with equipment for ABPM (**Supplementary Figure S1**). We
11 excluded 2459 participants who had a prescription for antihypertensive medication in
12 the last 12 months in the Swedish Prescribed Drug Register (ATC codes in
13 **Supplementary methods**) before the first baseline visit and 30 participants with
14 missing information in the country of birth. The remaining 7330 participants were
15 split into two groups. The “ABPM subsample” included those 4063 participants (3261
16 from Uppsala, 802 from Malmö) who had 24-hour BP records that passed quality
17 control.¹⁰ There were 312 individuals whose ABPM data did not pass the quality
18 control. After removing 6 participants without any office BP measurement, the final
19 “non-ABPM subsample”, consisted of 395 participants from Uppsala and 2866 from

1 Malmö who had valid office BP measurements. All participants provided written
2 informed consent. The study was conducted in accordance with the Declaration of
3 Helsinki. The Swedish Ethical Review Authority approved the Swedish
4 CardioPulmonary bioImage Study (DNR 2010-228-31M) and the present study (DNR
5 2018-315).

6

7 **Blood pressure measurements**

8 Participants of the ABPM subsample were instructed to apply the ABPM device
9 (Labtech EC-3H/ABP, Labtech Ltd, Debrecen, Hungary) in the morning and to
10 remove it 24 hours later. SBP and DBP were measured automatically every 30
11 minutes for participants from the Malmö center. SBP and DPB were measured every
12 30 minutes during the day, and every 90 minutes during the night in participants from
13 the Uppsala center ([Supplementary methods](#)).¹⁰ Office BP was measured after five
14 minutes of rest in supine position using an automatic device at the brachial artery
15 (Omron M10-IT, Omron Healthcare Co. Ltd., Kyoto, Japan).

16

17 **Microbiome analysis**

18 Fecal samples were collected for microbiome analysis, as previously described.¹¹ At
19 the first visit, participants received a fecal sample collection kit with barcoded tubes,

1 gloves, re-sealable plastic bags, paper collection bowls, and instructions from the
2 SCAPIS test center. Participants were instructed to collect fecal samples at home and
3 to store the tubes in sealed plastic bags in their home freezer until the second visit to
4 the test center, where they were stored for a maximum of 7 days at -20°C until
5 transferred to the -80°C freezers at the central biobank. The samples were shipped on
6 dry ice to Clinical Microbiomics A/S (Copenhagen, Denmark), where DNA
7 extraction, metagenomic shotgun sequencing, and bioinformatics analyses were
8 performed.¹¹ In brief, the process involved sequencing with Illumina Novaseq 6000
9 platform yielding on average 26 million read pairs per sample. Non-host reads and
10 previously published data were utilized to construct nonredundant gene catalogues for
11 fecal samples, where metagenomic species (MGS) and their corresponding signature
12 gene sets were identified. Species abundance was based on the abundance of signature
13 gene sets adjusting for effective gene length, and taxonomic annotation was based on
14 the NCBI RefSeq database.¹² The Shannon diversity index, an alpha diversity metric
15 that provides information about richness and evenness in the gut microbiota,¹³ was
16 estimated with R package *vegan* v2.5-7 using rarefied data. The functional potential
17 profile of the gut microbiota was determined by assigning genes to 103 metabolic
18 pathways comprising the gut metabolic modules (GMM).¹⁴ A species was considered
19 to carry a GMM if it carried at least two-thirds of the KEGG (Kyoto Encyclopedia of

1 Genes and Genomes) Orthology of a module. For modules with three or fewer steps,
2 all steps were required. For modules with alternative paths, only one path had to fulfill
3 the criterion.

4

5 **Metabolomics**

6 The GUTSY Atlas (<https://gutsyatlas.serve.scilifelab.se/>)¹¹ was used to investigate the
7 associations between 24-hour BP-related species and plasma metabolites in SCAPIS.

8 The methodological details are described in Dekkers et al.¹¹

9

10 **Other phenotypes**

11 Information on smoking, country of birth, previous diagnosis of diabetes mellitus and
12 inflammatory bowel diseases (Crohn's disease and ulcerative colitis), use of

13 antidiabetic and antihyperlipidemic drugs, and diet were based on questionnaire

14 information. Smoking was categorized as either current smoker or non-smoker.

15 Country of birth was categorized as Scandinavia (Sweden, Norway, or Finland), non-

16 Scandinavian Europe, Asia, and others. The MiniMeal-Q food frequency

17 questionnaire¹⁵ was used to estimate total energy intake and energy-adjusted fiber

18 intake. Energy-adjusted fiber intake was determined by calculating the amount of

19 consumed fiber per 1000 kcal of energy. Diet data from women reporting energy

1 intake values <500 or >5000 kcal/day, and men reporting <550 or >6000 kcal/day
2 were excluded as they were likely misreported.

3 Urinary sodium (Architect c16000; Abbott Laboratories, Abbott Park, IL, USA)
4 and creatinine (enzymatic method) were analyzed by Clinical Chemistry at Uppsala
5 University Hospital, Uppsala, Sweden from the morning fasting spot urine samples
6 collected at first visit.^{16,17} As a surrogate for sodium intake, the 24-hour sodium
7 excretion was estimated based on the spot urinary sodium using the Kawasaki
8 formula.¹⁸

9 Information on antibiotic use was extracted from the Swedish Prescribed Drug
10 Register 6 months preceding the visit 1. Proton pump inhibitor (PPI) use was defined
11 as participants with measurable omeprazole and/or pantoprazole levels in plasma from
12 metabolomics data.

13

14 **Statistical analysis**

15 *Main analysis*

16 All the statistical methods were performed using R (version 4.1.1). Four different 24-
17 hour BP outcomes were assessed: mean SBP and DBP and variability of SBP and
18 DBP, measured as the SD of the respective trait. A series of linear regression models
19 were applied in the ABPM subsample assessing the association of microbiome

1 diversity (Shannon diversity index) and species with these four outcomes, one at a
2 time. The species relative abundance was $\ln(x+1)$ transformed, where x denotes the
3 species relative abundance, followed by a z-transformation to set the mean 0 and the
4 SD to 1. A false discovery rate (FDR) of 5% using Benjamini-Hochberg method was
5 applied based on P -values from all four phenotypes together.¹⁹

6 We first applied a model with adjustment for age, sex, country of birth, and
7 technical source of variation stemming from DNA extraction plates where the
8 samples from the two study centers were analyzed on different plates (Model 1). We
9 assessed the enrichment for genera and GMMs using the gene set enrichment analysis
10 method²⁰ from the *fgsea* R package. For the enrichment analysis, the ranked P -values
11 of the associations between species and 24-hour BP outcomes were stratified by effect
12 direction from Model 1.

13 Associations with FDR <5% in Model 1 were selected for further assessment in
14 Model 2. Model 2 was additionally adjusted for smoking, fiber intake, total energy
15 intake, estimated sodium intake, use of antidiabetic drug, and use of
16 antihyperlipidemic drug. We used a complete case approach, analyzing the 3694
17 individuals with complete data on these phenotypes with one sample excluded due to
18 low read counts in the analyses using rarefied data. The selection of these covariates
19 was made using d-separation criteria applied on a directed acyclic graph (DAG)

1 assisted by the DAGitty, version 3.0, software (www.dagitty.net; [Supplementary](#)
2 [Figure S2A](#)).²¹

3 We considered BMI as a potential mediator or confounder. Therefore, to identify
4 species associated with BP independent of BMI, we also analyzed the associations in
5 Model 3, which included additional adjustment for BMI ([Supplementary Figure](#)
6 [S2B](#)).

7 To ensure the associations were not driven by influential observations in Model 2
8 and Model 3, unscaled dfbeta values were calculated using dfbetas R function for
9 each association. For an association to be considered reliable, the *P*-value after
10 excluding the most influential value had to be <0.05 and the direction of the
11 regression coefficient had to remain unchanged. To validate the findings and assess
12 the generalizability of associated species, we repeated the analysis in Model 2 using
13 office BP measurements in the ABPM and non-ABPM subsamples separately.

14 From the GUTSY Atlas, we retrieved the associations between 24-h BP-
15 associated species in Model 2 and plasma metabolites. The three associations with
16 lowest *P*-values between the species and known plasma metabolites were selected for
17 visualization. Hierarchical clustering using the Euclidean distance on the partial
18 Spearman correlation coefficients was performed on the unique subset of 50 selected
19 metabolites for the mean 24-hour BP and 32 metabolites for variability of 24-hour BP.

1 *Sensitivity analysis*

- 2 The following sensitivity analyses were performed in Model 2: (1) exclusion of
3 participants with a dispensed antibiotic prescription within 6 months before the visit 1;
4 (2) exclusion of participants with inflammatory bowel diseases; and (3) adjustment for
5 PPI usage.

1 **Results**

2 **Baseline characteristics**

3 The ABPM subsample included 3261 participants recruited in Uppsala (mean age
4 57.3 years, mean 24-hour SBP/DBP 122/76 mmHg) and 802 participants recruited in
5 Malmö (mean age 57.0 years, mean 24-hour SBP/DBP 122/75 mmHg) (**Table 1**). The
6 non-ABPM subsample consisted of 395 participants from Uppsala (mean age 57.3,
7 office SBP/DBP, 124/77) and 2866 participants from Malmö (mean age 56.9 years,
8 office SBP/DBP, 120/74 mmHg) (**Table 1**). Self-reported comorbidities were similar
9 in Uppsala and Malmö, but a higher proportion of current smokers was noted in
10 Malmö (14.5% in ABPM and 18.9% in non-ABPM) than in Uppsala (8.5% in ABPM
11 and 16.4% in non-ABPM).

12

13 **Decreased gut microbiota diversity is associated with higher systolic and** 14 **diastolic blood pressure**

15 We observed a negative association between Shannon diversity index and 24-hour BP
16 phenotypes, after adjusting for age, sex, country of birth, and technical source of
17 variation (**Table 2**; Model 1). The associations remained after further adjustment for
18 smoking, fiber intake, total energy intake, sodium intake, usage of antidiabetic drugs,
19 and usage of antihyperlipidemic drugs (**Table 2**, Model 2). The associations were

1 clearly attenuated, and in most cases no longer significant at $P < 0.05$ after adjusting
2 for BMI, suggesting that BMI may act either as a confounder or mediator of these
3 associations (**Table 2**, Model 3). Results were similar when using office BP as the
4 alternative outcome (**Table 2**).

5

6 **Specific metagenomics species were associated with blood pressure in minimally** 7 **adjusted models**

8 We further investigated the associations between 1692 species and the 24-hour BP
9 outcomes. In Model 1, adjusting for age, sex, country of birth, and technical source of
10 variation, we found 41 species positively associated with 24-hour SBP, 41 with 24-
11 hour DBP, 27 with the variability of SBP, and 17 with the variability of DBP
12 (**Supplementary Table S1**). We identified 52 species negatively associated with 24-
13 hour SBP, 39 with 24-hour DBP, 42 with variability of SBP, and 25 with variability
14 of DBP. No genera were enriched for associations (**Supplementary Table S2**) after
15 accounting for multiple testing.

16

17 **Gut metabolic functional pathways were enriched among the associations** 18 **between gut microbial species and 24-hour BP measurements**

1 To investigate the potential functional relationship between species and 24-hour BP,
2 we performed an enrichment analysis for GMM based on results from Model 1
3 (**Supplementary Table S3**). Out of the 103 GMM tested, 22 were enriched in those
4 associations with a positive coefficient. However, no negative association was found.
5 Specifically, 10 GMM were involved in amino acid degradation, 5 in carbohydrate
6 degradation, 5 in central metabolism, and 2 in organic acid metabolism. Threonine
7 degradation I and *Bifidobacterium* shunt were enriched among the associations
8 between the species and all 24-hour BP outcomes (**Supplementary Figure S3**).

9

10 **Specific metagenomics species linked to blood pressure in additionally adjusted** 11 **models**

12 A total of 140 unique species, with the exception of *Eubacteriales* sp. (HG3A.0335)
13 with a non-significant result in Model 1, were taken forward to Models 2 and 3. These
14 139 species were associated with the corresponding 24-hour BP outcomes in Model 2
15 at FDR <5% , which was additionally adjusted for smoking, fiber intake, total energy
16 intake, sodium intake, usage of antidiabetic drugs, and usage of antihyperlipidemic
17 drugs (**Supplementary Table S4, Figure 1**). However, the associations between
18 *Eubacterium ramulus*, *Eggerthellales* sp. (HG3A.1570), and *Eubacteriales* sp.
19 (HG3A.0447) with 24-hour SBP, 24-hour DBP, and variability of SBP, respectively,

1 were considered unreliable because the relationships were driven by a single
2 influential observation ([Supplementary Table S4, Supplementary Figure S4](#)).

3 Thus, we deemed 136 species to be robustly associated with at least one blood
4 pressure trait.

5 Species with a prevalence >70% showed consistent results across 24-hour BP and
6 office BP ([Figure 2](#)). In this group, the species with the largest positive effect estimates
7 in Model 2 were *Streptococcus parasanguinis*, *Butyrivicoccus* sp. (HG3A.0008),
8 *Clostridium* sp. TM06–18, *Clostridium* sp. TF06–15AC (HG3A.0032), *S. salivarius*,
9 *Collinsella aerofaciens*, and *Dorea longicatena*. The largest negative effect estimates
10 were observed for *Alistipes communis*, *A. shahii*, and *Eubacteriales* sp. (HG3A.0100)
11 ([Figure 2](#)). For species detected in $\leq 70\%$ of participants, the results were somewhat
12 less consistent ([Supplementary Figure S5](#)).

13 *Dorea formicigenerans*, *D. longicatena*, *Anaerobutyricum hallii*, *Blautia* sp. SG-
14 772, *B. obeum*, and *Roseburia inulinivorans* were the species with the largest positive
15 association with variability of 24-hour BP in Model 2, while *Odoribacter*
16 *splanchnicus*, *Oscillospiraceae* sp. (HG3A.0072), *Eubacteriales* sp. (HG3A.0100,
17 0136) and *Clostridia* sp. (HG3A.0140) were the largest negatively associated species
18 ([Supplementary Table S4](#)).

1 Associations between individual species and BP were attenuated after adjusting
2 for BMI ([Supplementary Table S5](#)). We observed evidence for BMI-independent
3 associations at FDR <5% with 24-hour BP for 50 species, of which 14 were deemed to
4 be driven by a single observation associated to either 24-hour SBP or 24-hour DBP.
5 Among these species, there were nine that had a reliable association with the other trait
6 of 24-hour BP ([Supplementary Table S5, Figure 1](#)). Therefore, among the remaining
7 36 species encompassing 45 reliable associations, the largest BMI-independent positive
8 effect estimates were observed for *R. faecis*, *R. inulinivorans*, *Eubacteriales* sp.
9 (HG3A.0105), *Coprobacillus* sp. (HG3A.0022), *Faecalibacterium* sp. (HG3A.0042),
10 and *Fusicatenibacter saccharivorans*. The largest negative effect estimates were
11 observed for *A. shahii* and *A. communis*. There were 57 species associated with BP
12 variability after adjusting for BMI of which 7 were driven by a single observation.
13 Among the remaining 50 species *Senegalimassilia faecalis*, *R. inulinivorans* and
14 *A. butyriciproducens* were examples of species positively associated with variability of
15 24-hour BP. *Anaerotruncus massiliensis* was an example of a species negatively
16 associated with variability of 24-hour BP.

17

18 **Sensitivity analyses confirmed robust associations between gut microbial species**
19 **and blood pressure**

1 We performed sensitivity analyses to assess the robustness of the associations
2 between species and 24-hour BP outcomes. First, medication usage and certain
3 medical conditions can significantly influence the gut microbiota and the outcomes.
4 We conducted sensitivity analyses to assess the robustness of the associations
5 between species and 24-hour BP outcomes by repeating the analyses while excluding
6 participants who had been exposed to antibiotics within the previous 6 months or who
7 had inflammatory bowel diseases. Additionally, we introduced an adjustment for the
8 use of PPIs to account for their potential impact ([Supplementary Table S6](#)). In these
9 analyses, estimates and *P*-values were consistent ([Supplementary Figure S6](#)).

10

11 **24-hour BP-associated species are associated with many plasma metabolites, and**
12 **their clustering reflects the directionality of the associations between species and**
13 **24-hour BP outcomes**

14 We assessed the associations between the 136 24-hour BP-associated species with
15 plasma metabolites using the GUTSY Atlas¹¹. Each of these species were associated
16 with at least 73 metabolites. ([Supplementary Table S7](#)).

17 The species associated with 24-hour BP formed two clusters based on their
18 strongest associations with metabolites, closely corresponding to their respective
19 positive and negative associations with 24-hour SBP ([Supplementary Figure S7](#)).

1 With the exception of a subgroup of 12 species, the species in the cluster positively
2 associated with 24-hour SBP were positively correlated with secondary bile acids and
3 negatively associated with primary bile acids, vitamin A metabolites, and acetylated
4 peptides, among others. Conversely, the other cluster showed an inverse pattern for
5 these associations. The previously observed inverse clustering pattern for the
6 associations between 24-hour BP-associated species and metabolites was remarkably
7 similar to the associations between variability of 24-hour BP species and metabolites
8 (**Supplementary Figure S8**).

1 Discussion

2 The current study of 4063 participants is the first large population-based study to
3 describe the relationship of the human gut microbiota with 24-hour ABPM. We
4 identified 140 species associated with at least one of the four 24-hour ABPM
5 measurements. Among common species, *Agathobaculum butyriciproducens*,
6 *Roseburia faecis*, *R. inulinivorans*, and *Dorea longicatena*, had the largest positive
7 effect estimates on SBP and DBP, whereas the largest negative effect estimates were
8 observed for *Alistipes communis*, *A. shahii*, and *Eubacteriales* sp. (HG3A.0100) in
9 our adjusted Model 2. *D. formicigenerans*, *D. longicatena*, *Anaerobutyricum hallii*,
10 *Blautia* sp. SG-772, and *Collinsella aerofaciens* were the species with a larger
11 positive association with variability of 24-hour BP, while *Odoribacter splanchnicus*,
12 *Oscillospiraceae* sp. (HG3A.0072), *Eubacteriales* sp. (HG3A.0100) and *Clostridia*
13 sp. (HG3A0756) were the species with largest negative effect estimates.

14 The gold standard for determining the mean BP in an individual is with 24-hour
15 ABPM, as it can account for, and quantify the substantial within-person variation in
16 blood pressure over time. Its clinical practical application is widely acknowledged,
17 and its usefulness for population research has recently been also recognized.¹⁰ Prior to
18 this study, the association between gut microbiota and within-person variation in BP
19 had not been investigated.

1 Two large studies have evaluated the association between the gut microbiota and
2 office BP.^{7,22} The HELIUS study used 16S rRNA gene amplicon sequencing to
3 examine the gut microbiota of 4672 participants from the municipality of
4 Amsterdam.⁸ After applying machine learning to identify the microbial predictors of
5 BP, higher abundance of *Streptococcus* spp. was found to be associated with higher
6 SBP. Similarly, *S. parasanguinis* was associated with higher BP in the present study.
7 In the HELIUS study, increased *Roseburia* spp. abundance was inversely associated
8 with SBP. However, in the present study, *R. faecis* and *R. inulinivorans* were
9 positively associated with BP measurements. This divergence in findings between the
10 HELIUS study and ours could be due to differences in the ethnic groups under
11 investigation and differences between individual species within the genus *Roseburia*.

12 In the FINRISK 2002 study, 6953 participants had their gut microbiota profiled
13 using shallow metagenomic sequencing.²² They found that, after multivariable
14 adjustment including BMI and antihypertensive medication, 45 microbial genera were
15 associated with BP. Among these, 20 genera were positively associated with prevalent
16 hypertension, including the genus *Dorea*. *Dorea* spp. are gram positive obligatory
17 anaerobic bacteria belonging to the family *Lachnospiraceae*.²³ In our study, we found
18 that *D. formicigenerans* and *D. longicatena* were positively associated with SBP and
19 DBP. Higher abundance of *D. formicigenerans* was correlated with higher BMI in a

1 previous study.²⁴ However, the subspecies of *D. longicatena* have varied associations
2 with BMI.²⁵ When we adjusted our analysis for BMI, we no longer observed an
3 association between *D. formicigenerans* and SBP or DBP, nor between
4 *D. longicatena* and SBP. There are two possible explanations for these results. First,
5 BMI could be a marker of poor lifestyle or other unmeasured confounders that affect
6 both microbial species and BP.²⁶ Second, given that certain species might cause
7 changes in adiposity,²⁷ BMI could be a mediator of the species associations with BP.
8 Given that increased BMI is a well-known contributing cause of hypertension,²⁸⁻³⁰
9 longitudinal studies with comprehensive information are needed to better understand
10 whether specific gut microbiota species might have an impact on BP mediated by
11 changes in BMI.

12 In our study, *R. faecis*, also known as *Agathobacter faecis*, was positively
13 associated with SBP and DBP, even after BMI adjustment. Conversely, a higher
14 abundance of *R. faecis* has been described in subjects with a higher adherence to the
15 Mediterranean diet³¹, which was shown to be protective against hypertension in
16 clinical trials^{32,33}. One possible reason for these contradictory findings is that certain
17 components of the Mediterranean diet might have a greater impact on hypertension
18 while other components are more associated to the *R. faecis* abundance. For instance,
19 high intake of fiber and fruits have been associated with *R. faecies*,³¹ while the

1 strongest lowering effects on 24-hour SBP and DBP have been found in the
2 Mediterranean diet supplemented with extra virgin olive oil.³¹

3 The production of SCFA by the gut microbiota has been suggested to affect the
4 host BP.³⁴⁻³⁷ In the present study, one of the SCFA, specifically butyrate/isobutyrate
5 (4:0), was found to be linked to 59 species associated with BP. In addition to the
6 butyrate-producing *R. faecis*, we also found that *Faecalibacterium prausnitzii* and
7 *Bifidobacterium adolescentis* were positively associated with SBP and DBP. An *in*
8 *vitro* study has shown that co-cultures of *F. prausnitzii* with *B. adolescentis* result in
9 higher butyrate production than monocultures.³⁴ Of note is that we had six within-
10 species variants of *F. prausnitzii* in the dataset, but only three of these variants
11 (HG3A.0010, 0025, 0029) were associated with BP, indicating that there are
12 differences on substrain level. Increased fecal concentrations of SCFA have been
13 described in subjects with elevated SBP in the HELIUS study⁸ as well as in other
14 studies^{36,37}. Furthermore, the serum concentration of the SCFA acetate was positively
15 associated with SBP in the longitudinal FINRISK 2007 study (n=4197).³⁵ However,
16 in the cross-sectional analysis of FINRISK (n=36 985), serum acetate was inversely
17 associated with hypertension in women.³⁵ Despite the positive associations between
18 serum and fecal SCFA and BP in some observational studies, animal studies have
19 produced opposite results. Oral supplementation of acetate led to a reduction in SBP

1 and DBP in hypertensive mice models³⁸ and intracolonic or intravenous
2 administration of butyrate produced a reduction in BP in rats.³⁹ Furthermore, although
3 we found certain butyrate-producing bacteria positively associated with BP, the
4 butyrate absorption might be reduced in individuals with elevated BP, similar to that
5 reported in a cross-sectional study (n=61) that reported a low plasma SCFA
6 concentration concomitant with high fecal concentrations in hypertensive
7 individuals.³⁷

8 We found several species that were inversely associated with BP even after
9 adjustment for BMI, including *Oxalobacter formigenes*, *Odoribacter splanchnicus*,
10 *A. communis*, and *A. shahii*. *O. formigenes* depends on oxalate as an energy- and
11 carbon source and individuals colonized with this bacterium show a lower urinary
12 oxalate excretion and thereby may have a lower risk of kidney lesion by calcium
13 oxalate stones.⁴⁰ *O. splanchnicus*, an anaerobic gram-negative bacterium,⁴¹ has been
14 associated with lower vascular stiffness measured with pulse wave velocity,⁴² which
15 is a predictor for cardiovascular diseases.⁴³ In line with our findings, a combined
16 analysis of the genus *Alistipes* previously showed an inverse association with
17 cardiovascular diseases such as atrial fibrillation,⁴⁴ atherosclerotic cardiovascular
18 diseases,⁴⁵ and heart failure.⁴⁶ Moreover, an animal study suggested that *A. putredinis*
19 might contribute to alleviate obesity induced by the fecal microbiota transplantation

1 from obese humans to mice.⁴⁷ Conversely, Kim et al. described a positive correlation
2 of two *Alistipes* species, *A. finegoldii* and *A. indistinctus*, with SBP.⁴⁸ In our study,
3 these two species were not associated with BPs in Model 1. Together, these studies
4 indicated that the associations of *Alistipes* species with BP might be heterogeneous.

5 We found that the functional pathways of threonine degradation I and
6 *Bifidobacterium* shunt were enriched among the species positively associated with BP
7 or BP variability. In a large prospective study (n=4288), a pattern of higher dietary
8 intake of threonine, serine, branched chain, and aromatic amino acids was associated
9 with incident hypertension.⁴⁹ In contrast, an inverse association between threonine
10 intake and BP has been described in a longitudinal post-myocardial infarction study
11 (n=100)⁵⁰ and in a cross-sectional study of middle-aged men (n=92).⁵¹ Given these
12 conflicting results of dietary amino acids and BP, together with our current results,
13 future investigations should examine whether the gut microbiota might act as an effect
14 modifier on the relationship of threonine with BP.

15 *Bifidobacterium* shunt is a fermentation pathway unique to *Bifidobacterium*
16 strains that yields acetate and lactate as end products.⁵²⁻⁵⁴ Although, we observed a
17 positive association between *Bifidobacterium* shunt and BP, a reduction in the
18 abundance of genus *Bifidobacterium* has been linked to elevated blood pressure in
19 children with type 1 diabetes mellitus.⁵⁵ Additionally, *B. breve* has been found to

1 prevent deoxycorticosterone acetate (DOCA)-salt hypertension in rats possibly
2 mediated by increased acetate production.^{53,56} More studies are needed to investigate
3 the association of *Bifidobacterium* species with blood pressure and explore potential
4 contributing mechanisms.

5 The lactate production pathway was also enriched in species associated with
6 DBP in our study. A higher abundance of lactate-producing bacteria has also been
7 described in spontaneously hypertensive rats.⁵⁷ Plasma lactate has been associated
8 with incident hypertension in women in a large epidemiological study (n=5554). The
9 authors conjectured that the higher lactate reflected decreased oxidative capacity or
10 insufficient vascular capacity leading to increased BP.⁵⁸ Although the human gut
11 microbiota contribution to plasma lactate levels is unknown, germ-free mice fed
12 lactate-producing *Lactobacillus* had higher circulating lactate levels than controls fed
13 *Lactobacillus* strains lacking the lactate production pathway.⁵⁹ Instead of crossing into
14 the blood stream, a usual route for the lactate produced in the colon is the conversion
15 into butyrate,⁶⁰ which may correspond to the increased fecal SCFA observed in
16 individuals with hypertension.³⁷

17

18 **Strengths and limitations**

1 The present study has several strengths. This is the first large population-based study
2 to investigate the relationship of the gut microbiota with 24-hour ABPM
3 measurements. As elaborated above, 24-hour ABPM provides a more precise and
4 comprehensive assessment of BP compared to office measurements. Additionally, the
5 gut microbiota was assessed using deep shotgun metagenomics enabling high
6 resolution detection of gut microbiota species and the putative functional pathways
7 carried by these species. Moreover, the extensive survey of covariates made it
8 possible to adjust for several potential confounders. We also excluded participants
9 with antihypertensive medication usage, defined by ATC codes, to avoid identifying
10 associations confounded by hypertension treatment.

11 There are, however, limitations that need to be addressed. First, this study has a
12 cross-sectional design and causality cannot be inferred. Moreover, we cannot rule out
13 collider bias by selection on health-seeking behavior, residual confounding, or reverse
14 causation. For instance, participants with higher blood pressure might have received
15 recommendations of lifestyle modifications that could affect the gut microbiota. Second,
16 formal mediation analysis for BMI was not possible due to lack of temporal precedence
17 in the present study. We expect to be able to address the longitudinal associations
18 between gut microbiota and BP in follow up examinations of SCAPIS. Third, the
19 dietary assessment was based on a self-reported questionnaire that may be affected by

1 recall and report bias. Misclassification of dietary intake has been related to factors that
2 are relevant for the gut microbiota composition, such as sex, age or obesity.⁶¹ Therefore,
3 we cannot exclude the possibility of differential misclassification of the dietary
4 covariates dependent on the exposure, which would result in residual confounding or
5 additional distortion of estimates. Fourth, our findings would need replication in an
6 independent cohort with complete 24-hour ABPM and gut microbiota data. We were
7 able to use an independent non-ABPM subsample to validate the results from the
8 ABPM subsample, and it showed the generalizability of the results in office BP. Fifth,
9 although we estimated salt intake using urine sodium from spot samples, this method
10 has been shown to have individual-level inconsistencies when compared with 24-hour
11 urine samples.⁶² Sixth, fecal metagenomics, while powerful for describing a snapshot
12 of the microbial community, does not accurately capture the gut microbiota species that
13 reside closer to the mucosal membrane⁶³ or in the small intestines,⁶⁴ which is a
14 limitation of most population-based studies on gut microbiota.

15

16 **Conclusion**

17 In our large population-based sample, the associations between the gut microbiota,
18 plasma metabolites, and 24-hour BP were investigated. We identified 140 gut
19 microbiota species associated with 24-hour ABPM. Moreover, we found indications

1 of involvement of gut microbial threonine degradation I, *Bifidobacterium* shunt, and
2 lactate production , and 24-hour BP phenotypes in BP regulation. Our findings
3 provide a starting point for further studies on the role of human gut microbiota and
4 downstream metabolites in BP regulation, which can potentially be targets for future
5 studies.

6

7 **Author contributions**

8 J.Ä., J.S., G.Be, G.E., J.G.S., M.O-M. and T.F. obtained the funding. Y-T.L., U.H.,
9 S.S-B., J.S., J.Ä., M.O-M. and T.F. designed the study and developed the concept.
10 L.L., G.E., J.G.S., J.S., J.Ä., M.O-M. and T.F. collected the data. N.N., A.C.E.,
11 J.B.H., H.B.N. performed metagenomic analysis and bioinformatics, Y-T.L., K.F.D.,
12 S.S-B. performed quality control and/or data management, Y-T.L. and S.S-B.
13 performed the association analyses, Y-T.L., K.F.D., S.S-B. and G.V. visualized the
14 results, and M.O-M. and T.F. coordinated the study. Y-T.L., G.Ba., D.N., and T.F.
15 wrote the first draft of the manuscript. All authors contributed with the interpretation
16 of the results and critical revision of the manuscript.

17 **Acknowledgments**

18 The computations and data handling were enabled by resources in project
19 sens2019512 provided by the National Academic Infrastructure for Supercomputing

1 in Sweden (NAISS) and the Swedish National Infrastructure for Computing (SNIC) at
2 Uppsala Multidisciplinary Center for Advanced Computational Science (UPPMAX)
3 partially funded by the Swedish Research Council through grant agreements no. 2022-
4 06725 and no. 2018-05973. The main funding body of the Swedish CARDioPulmonary
5 bioImage Study (SCAPIS) is the Swedish Heart-Lung Foundation. The study is also
6 funded by the Knut and Alice Wallenberg Foundation; the Swedish Research Council,
7 and VINNOVA (Sweden's Innovation agency); the University of Gothenburg and
8 Sahlgrenska University Hospital; Karolinska Institutet and Stockholm county council;
9 Linköping University and University Hospital; Lund University and Skåne University
10 Hospital; Umeå University and University Hospital; and Uppsala University and
11 University Hospital.

12

13 **Funding**

14 We acknowledge the financial support from the European Research Council [ERC-
15 STG-2018-801965 (T.F.); ERC-CoG-2014-649021 (M.O-M.), ERC-STG-2015-
16 679242 (J.G.S.)], the Swedish Research Council [VR 2019-01471 (T.F.); 2018-02784
17 (M.O-M.); 2018-02837 (M.O-M.); 2021-03291 (M.O-M.); EXODIAB 2009-1039
18 (M.O-M.); 2019-01015 (J.Ä.); 2020-00243 (J.Ä.); 2019-01236 (G.E.); 2021-02273
19 (J.G.S.)], the Swedish Heart-Lung Foundation [Hjärt-Lungfonden, 20190505 (T.F.);

1 20200711 (M.O-M.); 20180343, 20210357 (J.Ä.); 20200173 (G.E.); 20190526
2 (J.G.S.)], the A.L.F. governmental grant [2018-0148 (M.O-M.)], the Novo Nordic
3 Foundation [NNF20OC0063886 (M.O-M.)], the Swedish Diabetes foundation [DIA
4 2018-375 (M.O-M.)], the Swedish Foundation for Strategic Research [LUDC-IRC 15-
5 0067 (M.O-M.)], Göran Gustafsson foundation [2016 (T.F.)]; and Axel and Signe
6 Lagerman's foundation (T.F.).

7

8 **Conflict of Interest**

9 The authors declare the following competing interests: N.N., A.C.E. and J.B.H., and
10 H.B.N. are employees of Clinical Microbiomics. The funders had no role in study
11 design, data collection and analysis, decision to publish, nor preparation of the
12 manuscript. J.Ä. has received lecture fees from Novartis and AstraZeneca, and served
13 on advisory boards for AstraZeneca and Boehringer Ingelheim, all unrelated to the
14 present paper. J.S. reports stock ownership in Anagram kommunikation AB and
15 Symptoms Europe AB, unrelated to the present study. All other authors report no
16 conflicts of interest in connection with this study.

17 **Data availability statement**

18 De-identified de-hosted metagenomic sequencing data for SCAPIS samples can be
19 accessed from the European Nucleotide Archive under accession number

- 1 PRJEB51353 (<https://www.ebi.ac.uk/ena/browser/view/prjeb51353>). Access to
- 2 pseudonymized SCAPIS phenotype data requires ethical approval from the Swedish
- 3 Ethical Review Board and approval from the SCAPIS Data access board
- 4 (<https://www.scapis.org/data-access/>). The source code and the summary data
- 5 underlying all figures used to generate the results for the analysis are available at
- 6 <https://github.com/MolEpicUU/24hBP-mgs>.

Reference List

- 1
2
- 3 1. GBD 2019 Diseases and Injuries Collaborators. Global burden of 369 diseases
4 and injuries in 204 countries and territories, 1990–2019: a systematic analysis for the
5 Global Burden of Disease Study 2019. *The Lancet* 2020;**396**:1204-1222. doi:
6 10.1016/S0140-6736(20)30925-9
- 7 2. Avery EG, Bartolomaeus H, Maifeld A, *et al.* The Gut Microbiome in
8 Hypertension: Recent Advances and Future Perspectives. *Circ Res* 2021;**128**:934-950.
9 doi: 10.1161/CIRCRESAHA.121.318065
- 10 3. Li J, Zhao F, Wang Y, *et al.* Gut microbiota dysbiosis contributes to the
11 development of hypertension. *Microbiome* 2017;**5**:14. doi: 10.1186/s40168-016-0222-
12 x
- 13 4. Ufnal M, Jazwiec R, Dadlez M, *et al.* Trimethylamine-N-oxide: a carnitine-
14 derived metabolite that prolongs the hypertensive effect of angiotensin II in rats. *Can*
15 *J Cardiol* 2014;**30**:1700-1705. doi: 10.1016/j.cjca.2014.09.010
- 16 5. Pluznick JL, Protzko RJ, Gevorgyan H, *et al.* Olfactory receptor responding to
17 gut microbiota-derived signals plays a role in renin secretion and blood pressure
18 regulation. *Proc Natl Acad Sci U S A* 2013;**110**:4410-4415. doi:
19 10.1073/pnas.1215927110
- 20 6. Antza C, Stabouli S, Kotsis V. Gut microbiota in kidney disease and
21 hypertension. *Pharmacol Res* 2018;**130**:198-203. doi: 10.1016/j.phrs.2018.02.028
- 22 7. Verhaar BJH, Collard D, Prodan A, *et al.* Associations between gut microbiota,
23 faecal short-chain fatty acids, and blood pressure across ethnic groups: the HELIUS
24 study. *Eur Heart J* 2020;**41**:4259-4267. doi: 10.1093/eurheartj/ehaa704
- 25 8. Stevens SL, Wood S, Koshiaris C, *et al.* Blood pressure variability and
26 cardiovascular disease: systematic review and meta-analysis. *BMJ* 2016;**354**:i4098.
27 doi: 10.1136/bmj.i4098
- 28 9. Bergstrom G, Berglund G, Blomberg A, *et al.* The Swedish CARDioPulmonary
29 BioImage Study: objectives and design. *J Intern Med* 2015;**278**:645-659. doi:
30 10.1111/joim.12384
- 31 10. Lin YT, Lampa E, Fall T, Engstrom G, Sundstrom J. Blood pressure phenotypes
32 based on ambulatory monitoring in a general middle-aged population. *Blood Press*
33 2021;**30**:237-249. doi: 10.1080/08037051.2021.1903302
- 34 11. Dekkers KF, Sayols-Baixeras S, Baldanzi G, *et al.* An online atlas of human
35 plasma metabolite signatures of gut microbiome composition. *Nat Commun*
36 2022;**13**:5370. doi: 10.1038/s41467-022-33050-0
- 37 12. O'Leary NA, Wright MW, Brister JR, *et al.* Reference sequence (RefSeq)
38 database at NCBI: current status, taxonomic expansion, and functional annotation.

- 1 *Nucleic Acids Res* 2016;**44**:D733-D745. doi: 10.1093/nar/gkv1189
- 2 13. Willis AD. Rarefaction, Alpha Diversity, and Statistics. *Front Microbiol*
- 3 2019;**10**:2407. doi: 10.3389/fmicb.2019.02407
- 4 14. Vieira-Silva S, Falony G, Darzi Y, *et al.* Species-function relationships shape
- 5 ecological properties of the human gut microbiome. *Nat Microbiol* 2016;**1**:16088. doi:
- 6 10.1038/nmicrobiol.2016.88
- 7 15. Christensen SE, Moller E, Bonn SE, *et al.* Two new meal- and web-based
- 8 interactive food frequency questionnaires: validation of energy and macronutrient
- 9 intake. *J Med Internet Res* 2013;**15**:e109. doi: 10.2196/jmir.2458
- 10 16. Franzen S, Semenas E, Taavo M, *et al.* Renal function during sevoflurane or total
- 11 intravenous propofol anaesthesia: a single-centre parallel randomised controlled
- 12 study. *Br J Anaesth* 2022;**128**:838-848. doi: 10.1016/j.bja.2022.02.030
- 13 17. Taavo M, Rundgren M, Frykholm P, *et al.* Role of Renal Sympathetic Nerve
- 14 Activity in Volatile Anesthesia's Effect on Renal Excretory Function. *Function (Oxf)*
- 15 2021;**2**:zqab042. doi: 10.1093/function/zqab042
- 16 18. Kawasaki T, Itoh K, Uezono K, Sasaki H. A simple method for estimating 24 h
- 17 urinary sodium and potassium excretion from second morning voiding urine specimen
- 18 in adults. *Clinical and experimental pharmacology and physiology* 1993;**20**:7-14. doi:
- 19 10.1111/j.1440-1681.1993.tb01496.x
- 20 19. Benjamini Y, Hochberg Y. Controlling the False Discovery Rate: A Practical and
- 21 Powerful Approach to Multiple Testing. *Journal of the Royal Statistical Society.*
- 22 *Series B (Methodological)* 1995;**57**:289–300. doi: 10.1111/j.2517-
- 23 6161.1995.tb02031.x
- 24 20. Korotkevich G, Sukhov V, Budin N, *et al.* Fast gene set enrichment analysis.
- 25 *bioRxiv* 2021. doi: 10.1101/060012
- 26 21. Textor J, van der Zander B, Gilthorpe MS, Liskiewicz M, Ellison GT. Robust
- 27 causal inference using directed acyclic graphs: the R package 'dagitty'. *Int J Epidemiol*
- 28 2016;**45**:1887-1894. doi: 10.1093/ije/dyw341
- 29 22. Palmu J, Salosensaari A, Havulinna AS, *et al.* Association between the gut
- 30 microbiota and blood pressure in a population cohort of 6953 individuals. *J Am Heart*
- 31 *Assoc* 2020;**9**:e016641. doi: 10.1161/JAHA.120.016641
- 32 23. Taras D, Simmering R, Collins MD, Lawson PA, Blaut M. Reclassification of
- 33 *Eubacterium formicigenerans* Holdeman and Moore 1974 as *Dorea formicigenerans*
- 34 gen. nov., comb. nov., and description of *Dorea longicatena* sp. nov., isolated from
- 35 human faeces. *Int J Syst Evol Microbiol* 2002;**52**:423-428. doi: 10.1099/00207713-52-
- 36 2-423
- 37 24. Companys J, Gosalbes MJ, Pla-Paga L, *et al.* Gut Microbiota Profile and Its
- 38 Association with Clinical Variables and Dietary Intake in Overweight/Obese and Lean

- 1 Subjects: A Cross-Sectional Study. *Nutrients* 2021;**13**. doi: 10.3390/nu13062032
- 2 25. Rothschild D, Leviatan S, Hanemann A, *et al.* An atlas of robust microbiome
- 3 associations with phenotypic traits based on large-scale cohorts from two continents.
- 4 *PLoS One* 2022;**17**:e0265756. doi: 10.1371/journal.pone.0265756
- 5 26. Kontogianni MD, Farmaki AE, Vidra N, *et al.* Associations between lifestyle
- 6 patterns and body mass index in a sample of Greek children and adolescents. *J Am*
- 7 *Diet Assoc* 2010;**110**:215-221. doi: 10.1016/j.jada.2009.10.035
- 8 27. Palmas V, Pisanu S, Madau V, *et al.* Gut microbiota markers associated with
- 9 obesity and overweight in Italian adults. *Scientific Reports* 2021;**11**:5532. doi:
- 10 10.1038/s41598-021-84928-w
- 11 28. Droyvold WB, Midthjell K, Nilsen TI, Holmen J. Change in body mass index
- 12 and its impact on blood pressure: a prospective population study. *Int J Obes (Lond)*
- 13 2005;**29**:650-655. doi: 10.1038/sj.ijo.0802944
- 14 29. Gelber RP, Gaziano JM, Manson JE, Buring JE, Sesso HD. A prospective study
- 15 of body mass index and the risk of developing hypertension in men. *Am J Hypertens*
- 16 2007;**20**:370-377. doi: 10.1016/j.amjhyper.2006.10.011
- 17 30. Linderman GC, Lu J, Lu Y, *et al.* Association of body mass index with blood
- 18 pressure among 1.7 million Chinese adults. *JAMA Netw Open* 2018;**1**:e181271. doi:
- 19 10.1001/jamanetworkopen.2018.1271
- 20 31. Roses C, Cuevas-Sierra A, Quintana S, *et al.* Gut microbiota bacterial species
- 21 associated with Mediterranean diet-related food groups in a northern Spanish
- 22 population. *Nutrients* 2021;**13**. doi: 10.3390/nu13020636
- 23 32. Davis CR, Hodgson JM, Woodman R, *et al.* A Mediterranean diet lowers blood
- 24 pressure and improves endothelial function: results from the MedLey randomized
- 25 intervention trial. *Am J Clin Nutr* 2017;**105**:1305-1313. doi: 10.3945/ajcn.116.146803
- 26 33. Domenech M, Roman P, Lapetra J, *et al.* Mediterranean diet reduces 24-hour
- 27 ambulatory blood pressure, blood glucose, and lipids: one-year randomized, clinical
- 28 trial. *Hypertension* 2014;**64**:69-76. doi: 10.1161/HYPERTENSIONAHA.113.03353
- 29 34. Rios-Covian D, Gueimonde M, Duncan SH, Flint HJ, de los Reyes-Gavilan CG.
- 30 Enhanced butyrate formation by cross-feeding between *Faecalibacterium prausnitzii*
- 31 and *Bifidobacterium adolescentis*. *FEMS Microbiol Lett* 2015;**362**. doi:
- 32 10.1093/femsle/fnv176
- 33 35. Palmu J, Tikkanen E, Havulinna AS, *et al.* Comprehensive biomarker profiling
- 34 of hypertension in 36 985 Finnish individuals. *J Hypertens* 2022;**40**:579-587. doi:
- 35 10.1097/HJH.0000000000003051
- 36 36. Huart J, Leenders J, Taminiau B, *et al.* Gut microbiota and fecal levels of short-
- 37 chain fatty acids differ upon 24-hour blood pressure levels in men. *Hypertension*
- 38 2019;**74**:1005-1013. doi: 10.1161/HYPERTENSIONAHA.118.12588

- 1 37. Calderon-Perez L, Gosalbes MJ, Yuste S, *et al.* Gut metagenomic and short chain
2 fatty acids signature in hypertension: a cross-sectional study. *Sci Rep* 2020;**10**:6436.
3 doi: 10.1038/s41598-020-63475-w
- 4 38. Marques FZ, Nelson E, Chu PY, *et al.* High-fiber diet and acetate
5 supplementation change the gut microbiota and prevent the development of
6 hypertension and heart failure in hypertensive mice. *Circulation* 2017;**135**:964-977.
7 doi: 10.1161/CIRCULATIONAHA.116.024545
- 8 39. Onyszkiewicz M, Gawrys-Kopczynska M, Konopelski P, *et al.* Butyric acid, a
9 gut bacteria metabolite, lowers arterial blood pressure via colon-vagus nerve signaling
10 and GPR41/43 receptors. *Pflugers Arch* 2019;**471**:1441-1453. doi: 10.1007/s00424-
11 019-02322-y
- 12 40. Daniel SL, Moradi L, Paiste H, *et al.* Forty years of *Oxalobacter formigenes*, a
13 gutsy oxalate-degrading specialist. *Appl Environ Microbiol* 2021;**87**:e0054421. doi:
14 10.1128/AEM.00544-21
- 15 41. Goker M, Gronow S, Zeytun A, *et al.* Complete genome sequence of
16 *Odoribacter splanchnicus* type strain (1651/6). *Stand Genomic Sci* 2011;**4**:200-209.
17 doi: 10.4056/sigs.1714269
- 18 42. Menni C, Lin C, Cecelja M, *et al.* Gut microbial diversity is associated with
19 lower arterial stiffness in women. *Eur Heart J* 2018;**39**:2390-2397. doi:
20 10.1093/eurheartj/ehy226
- 21 43. Willum-Hansen T, Staessen JA, Torp-Pedersen C, *et al.* Prognostic value of
22 aortic pulse wave velocity as index of arterial stiffness in the general population.
23 *Circulation* 2006;**113**:664-670. doi: 10.1161/CIRCULATIONAHA.105.579342
- 24 44. Zuo K, Li J, Li K, *et al.* Disordered gut microbiota and alterations in metabolic
25 patterns are associated with atrial fibrillation. *Gigascience* 2019;**8**. doi:
26 10.1093/gigascience/giz058
- 27 45. Jie Z, Xia H, Zhong SL, *et al.* The gut microbiome in atherosclerotic
28 cardiovascular disease. *Nat Commun* 2017;**8**:845. doi: 10.1038/s41467-017-00900-1
- 29 46. Cui X, Ye L, Li J, *et al.* Metagenomic and metabolomic analyses unveil dysbiosis
30 of gut microbiota in chronic heart failure patients. *Sci Rep* 2018;**8**:635. doi:
31 10.1038/s41598-017-18756-2
- 32 47. Ridaura VK, Faith JJ, Rey FE, *et al.* Gut microbiota from twins discordant for
33 obesity modulate metabolism in mice. *Science* 2013;**341**:1241214. doi:
34 10.1126/science.1241214
- 35 48. Parker BJ, Wearsch PA, Veloo ACM, Rodriguez-Palacios A. The Genus *Alistipes*:
36 Gut bacteria with emerging implications to inflammation, cancer, and mental health.
37 *Front Immunol* 2020;**11**:906. doi: 10.3389/fimmu.2020.00906
- 38 49. Teymoori F, Asghari G, Mirmiran P, Azizi F. Dietary amino acids and incidence

- 1 of hypertension: A principle component analysis approach. *Sci Rep* 2017;**7**:16838.
2 doi: 10.1038/s41598-017-17047-0
- 3 50. Tuttle KR, Milton JE, Packard DP, Shuler LA, Short RA. Dietary amino acids
4 and blood pressure: A cohort study of patients with cardiovascular disease. *Am J*
5 *Kidney Dis* 2012;**59**:803-809. doi: 10.1053/j.ajkd.2011.12.026
- 6 51. Ntzouvani A, Nomikos T, Panagiotakos D, *et al.* Amino acid profile and
7 metabolic syndrome in a male Mediterranean population: A cross-sectional study.
8 *Nutr Metab Cardiovasc Dis* 2017;**27**:1021-1030. doi: 10.1016/j.numecd.2017.07.006
- 9 52. Picard C, Fioramonti J, Francois A, *et al.* Review article: bifidobacteria as
10 probiotic agents -- physiological effects and clinical benefits. *Aliment Pharmacol*
11 *Ther* 2005;**22**:495-512. doi: 10.1111/j.1365-2036.2005.02615.x
- 12 53. Chen J, Chen X, Ho CL. Recent Development of Probiotic Bifidobacteria for
13 Treating Human Diseases. *Front Bioeng Biotechnol* 2021;**9**:770248. doi:
14 10.3389/fbioe.2021.770248
- 15 54. Devika NT, Raman K. Deciphering the metabolic capabilities of Bifidobacteria
16 using genome-scale metabolic models. *Sci Rep* 2019;**9**:18222. doi: 10.1038/s41598-
17 019-54696-9
- 18 55. Lakshmanan AP, Shatat IF, Zaidan S, *et al.* Bifidobacterium reduction is
19 associated with high blood pressure in children with type 1 diabetes mellitus. *Biomed*
20 *Pharmacother* 2021;**140**:111736. doi: 10.1016/j.biopha.2021.111736
- 21 56. Robles-Vera I, de la Visitacion N, Toral M, *et al.* Probiotic Bifidobacterium breve
22 prevents DOCA-salt hypertension. *FASEB J* 2020;**34**:13626-13640. doi:
23 10.1096/fj.202001532R
- 24 57. Yang T, Santisteban MM, Rodriguez V, *et al.* Gut dysbiosis is linked to
25 hypertension. *Hypertension* 2015;**65**:1331-1340. doi:
26 10.1161/HYPERTENSIONAHA.115.05315
- 27 58. Juraschek SP, Bower JK, Selvin E, *et al.* Plasma lactate and incident
28 hypertension in the atherosclerosis risk in communities study. *Am J Hypertens*
29 2015;**28**:216-224. doi: 10.1093/ajh/hpu117
- 30 59. Lee YS, Kim TY, Kim Y, *et al.* Microbiota-derived lactate promotes
31 hematopoiesis and erythropoiesis by inducing stem cell factor production from leptin
32 receptor+ niche cells. *Exp Mol Med* 2021;**53**:1319-1331. doi: 10.1038/s12276-021-
33 00667-y
- 34 60. Duncan SH, Louis P, Flint HJ. Lactate-utilizing bacteria, isolated from human
35 feces, that produce butyrate as a major fermentation product. *Appl Environ Microbiol*
36 2004;**70**:5810-5817. doi: 10.1128/AEM.70.10.5810-5817.2004
- 37 61. Murakami K, Livingstone MB. Prevalence and characteristics of misreporting of
38 energy intake in US adults: NHANES 2003-2012. *Br J Nutr* 2015;**114**:1294-1303.

- 1 doi: 10.1017/S0007114515002706
- 2 62. Santos JA, Li KC, Huang L, *et al.* Change in mean salt intake over time using
3 24-h urine versus overnight and spot urine samples: a systematic review and meta-
4 analysis. *Nutr J* 2020;**19**:136. doi: 10.1186/s12937-020-00651-8
- 5 63. Tap J, Derrien M, Tornblom H, *et al.* Identification of an intestinal microbiota
6 signature associated with severity of irritable bowel syndrome. *Gastroenterology*
7 2017;**152**:111-123 e118. doi: 10.1053/j.gastro.2016.09.049
- 8 64. Leite GGS, Weitsman S, Parodi G, *et al.* Mapping the segmental microbiomes in
9 the human small bowel in comparison with stool: A REIMAGINE Study. *Dig Dis Sci*
10 2020;**65**:2595-2604. doi: 10.1007/s10620-020-06173-x
- 11
- 12

1 **Figure legends**

2 **Figure 1.** Association between metagenomic species and 24-hour blood pressure

3 measurements and their variability from multivariable regression analyses. In Model

4 1, adjustment was made for age, sex, country of birth, and DNA extraction plate.

5 Model 2 was adjusted for Model 1 covariates and additionally for smoking, fiber

6 intake, total energy intake, sodium intake, usage of antidiabetic drugs, and usage of

7 antihyperlipidemic drugs. In Model 3, additional adjustment for BMI was included.

8 Y-axis shows the species name, and the internal identification number

9 (HG3A.number) in parenthesis. Abbreviations: SBP: systolic blood pressure, DBP:

10 diastolic blood pressure, SBP-SD: variability of 24-hour SBP, DBP-SD: variability of

11 24-hour DBP. ** indicates associations with FDR <5%, while * indicates associations

12 with *P*-value <0.05.

13

14 **Figure 2.** Forest plot of the association between metagenomic species (MGS,

15 prevalence >70%) and blood pressure in two subsamples, ABPM and non-ABPM.

16 Forest plot of the association between MGS (prevalence rate >70%) and (left panel)

17 mean 24-hour SBP (ABPM subsample), mean office SBP (ABPM subsample), and

18 mean office SBP (non-ABPM cohort) in Model 2. The association between MGS and

19 (right panel) mean 24-hour DBP (ABPM subsample), mean office DBP (ABPM

- 1 subsample), and mean office DBP (non-ABPM subsample) in Model 2. Model 2 was
- 2 adjusted for age, sex, country of birth, DNA extraction plate, smoking, fiber intake,
- 3 total energy intake, sodium intake, usage of antidiabetic drugs, and usage of
- 4 antihyperlipidemic drugs. N.S. referred to the non-significant associations between
- 5 MGS and BP in Model 1.

Table 1. Descriptive characteristics of participants in the Swedish CARDioPulmonary bioImage Study (SCAPIS) study in the Uppsala and Malmö centers. Participants had metagenomics data and were not taking blood pressure medication. Blood pressure measurements were conducted in two subsamples, the ABPM and non-ABPM subsamples.

	ABPM subsample		non-ABPM subsample	
	Uppsala (n=3261)	Malmö (n=802)	Uppsala (n=395)	Malmö (n=2866)
Age, years	57.3 (4.37)	57.0 (4.31)	57.3 (4.45)	56.9 (4.21)
Female, n (%)	1735 (53.2)	424 (52.9)	195 (49.4)	1564 (54.6)
Country of birth, n (%)				
Scandinavia	2915 (89.4)	599 (74.7)	354 (89.6)	2276 (79.4)
Europe	136 (4.17)	137 (17.1)	15 (3.8)	367 (12.8)
Asia	135 (4.14)	47 (5.86)	18 (4.56)	154 (5.37)
Others	75 (2.30)	19 (2.37)	8 (2.03)	69 (2.41)
Current smoker, n (%)	272 (8.5)	116 (14.5)	44 (16.4)	526 (18.9)
Body mass index, kg/m ²	26.4 (4.11)	26.8 (4.37)	27.1 (4.14)	26.7 (4.37)
Fiber intake, g/1000kcal	18.6 (13.2–25.5)	17.9 (12.5–25.7)	19.8 (13.5–26.7)	18.1 (12.5–25.2)
Total energy intake, kcal/day	1631 (1292–2053)	1613 (1236–2123)	1713 (1296–2161)	1604 (1251–2097)
Diabetes mellitus, n (%)	65 (2.00)	13 (1.62)	6 (2.80)	67 (2.48)
Medication for diabetes, n (%)	52 (1.60)	12 (1.50)	3 (1.40)	49 (1.81)
Antihyperlipidemic medication, n (%)	93 (2.86)	22 (2.75)	8 (3.74)	94 (3.48)
Proton pump inhibitor, n (%)	64 (1.98)	25 (3.42)	6 (1.53)	72 (3.44)
Antibiotics treatment, n (%)	309 (9.48)	75 (9.35)	41 (10.4)	319 (11.1)

Inflammatory bowel diseases, n (%)	42 (1.29)	1 (0.13)	4 (1.87)	31 (1.16)
Clinical blood pressure				
24-hour blood pressure record				
SBP (mmHg)	122 (10.8)	122 (11.8)	–	–
DBP (mmHg)	75.7 (7.4)	75.3 (8.0)	–	–
Variability of SBP (mmHg)	14.7 (3.98)	14.0 (3.70)	–	–
Variability of DBP (mmHg)	12.2 (3.34)	11.1 (3.02)	–	–
Office blood pressure measurement				
SBP (mmHg)	123 (15.2)	121 (16.4)	124 (16.1)	120 (15.8)
DBP (mmHg)	75.6 (9.53)	73.8 (9.90)	76.9 (9.88)	73.5 (9.43)
Sodium intake evaluation				
Urine sodium (mmol/L)	55.3 (33.3–86.1)	47.6 (24.7–76.9)	56.9 (32.5–86.7)	46.1 (24.5–78.8)
Creatinine (mmol/L)	124 (73.5–180)	113 (55.1–163)	141 (78.1–191)	109 (54.3–165)
Estimated 24-hour urine sodium (mg/day) ^a	8.05 (7.77–8.29)	8.05 (7.78–8.31)	8.02 (7.74–8.28)	8.05 (7.78–8.28)

ABPM, ambulatory blood pressure monitoring; SBP, systolic blood pressure; DBP, diastolic blood pressure; n, number of participants

Continuous variables are presented as mean (standard deviation) or median (interquartile range) as appropriate. The median was presented for fiber intake, energy intake, urine sodium, creatinine, and estimated 24-hour urine sodium.

^aEstimated 24-hour urine sodium was based on Kawasaki formula.

Table 2. Association between alpha diversity (Shannon diversity index) and blood pressure (24-hour BP outcomes and office BP) in the ABPM and non-ABPM subsamples.

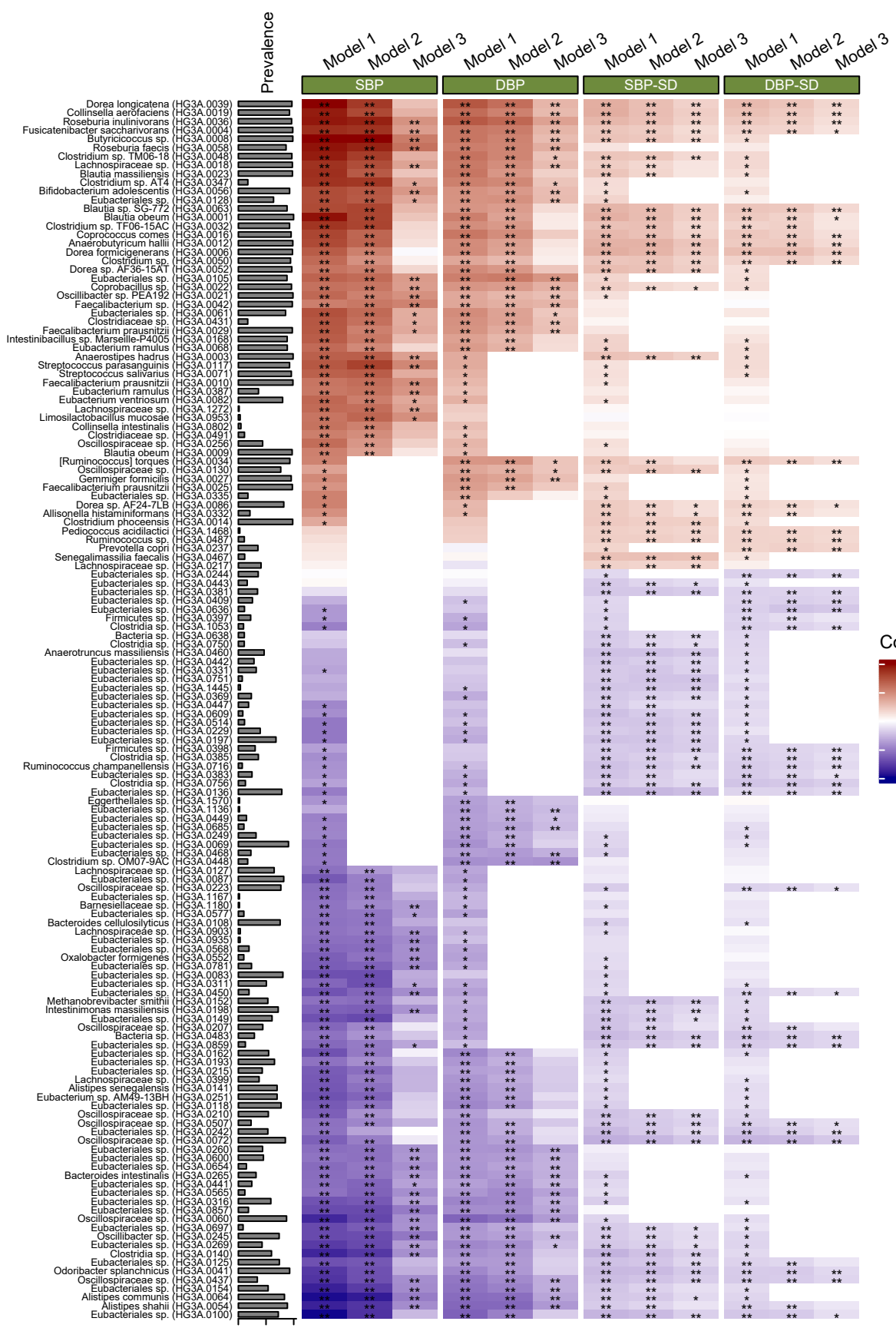
Outcome	Model 1		Model 2		Model 3	
	Size	Estimate (95% CI)	Size	Estimate (95% CI)	Size	Estimate (95% CI)
ABPM subsample						
24-hour SBP	4062	-1.94 (-2.78, -1.10)	3694	-1.61 (-2.49, -0.72)	3694	-0.40 (-1.24, 0.44)
24-hour DBP	4062	-1.10 (-1.67, -0.53)	3694	-0.87 (-1.48, -0.27)	3694	-0.22 (-0.80, 0.36)
Variability of 24-hour SBP	4062	-0.60 (-0.91, -0.30)	3694	-0.52 (-0.84, -0.20)	3694	-0.34 (-0.66, -0.02)
Variability of 24-hour DBP	4062	-0.61 (-0.87, -0.35)	3694	-0.55 (-0.83, -0.28)	3694	-0.39 (-0.66, -0.12)
Office SBP	4060	-1.92 (-3.09, -0.75)	3693	-1.30 (-2.53, -0.07)	3693	-0.01 (-1.21, 1.19)
Office DBP	4060	-1.40 (-2.15, -0.65)	3693	-0.94 (-1.72, -0.16)	3693	0.06 (-0.69, 0.80)
Non-ABPM subsample						
Office SBP	3261	-3.24 (-4.53, -1.95)	2772	-2.67 (-4.10, -1.23)	2772	-1.20 (-2.61, 0.21)
Office DBP	3260	-1.98 (-2.78, -1.18)	2771	-1.52 (-2.41, -0.64)	2771	-0.34 (-1.20, 0.52)

Abbreviations: BP, blood pressure; ABPM, ambulatory blood pressure monitoring; SBP, systolic blood pressure; DBP, diastolic blood pressure; CI, confidence interval

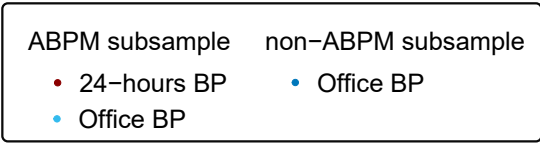
Model 1: Adjusted for age, sex, country of birth, and technical source of variation

Model 2: Adjusted for Model 1 covariates and additionally for smoking, fiber intake, total energy intake, sodium intake, usage of antidiabetic drugs, and usage of antihyperlipidemic drugs

Model 3: Adjusted for Model 2 covariates and additionally for BMI

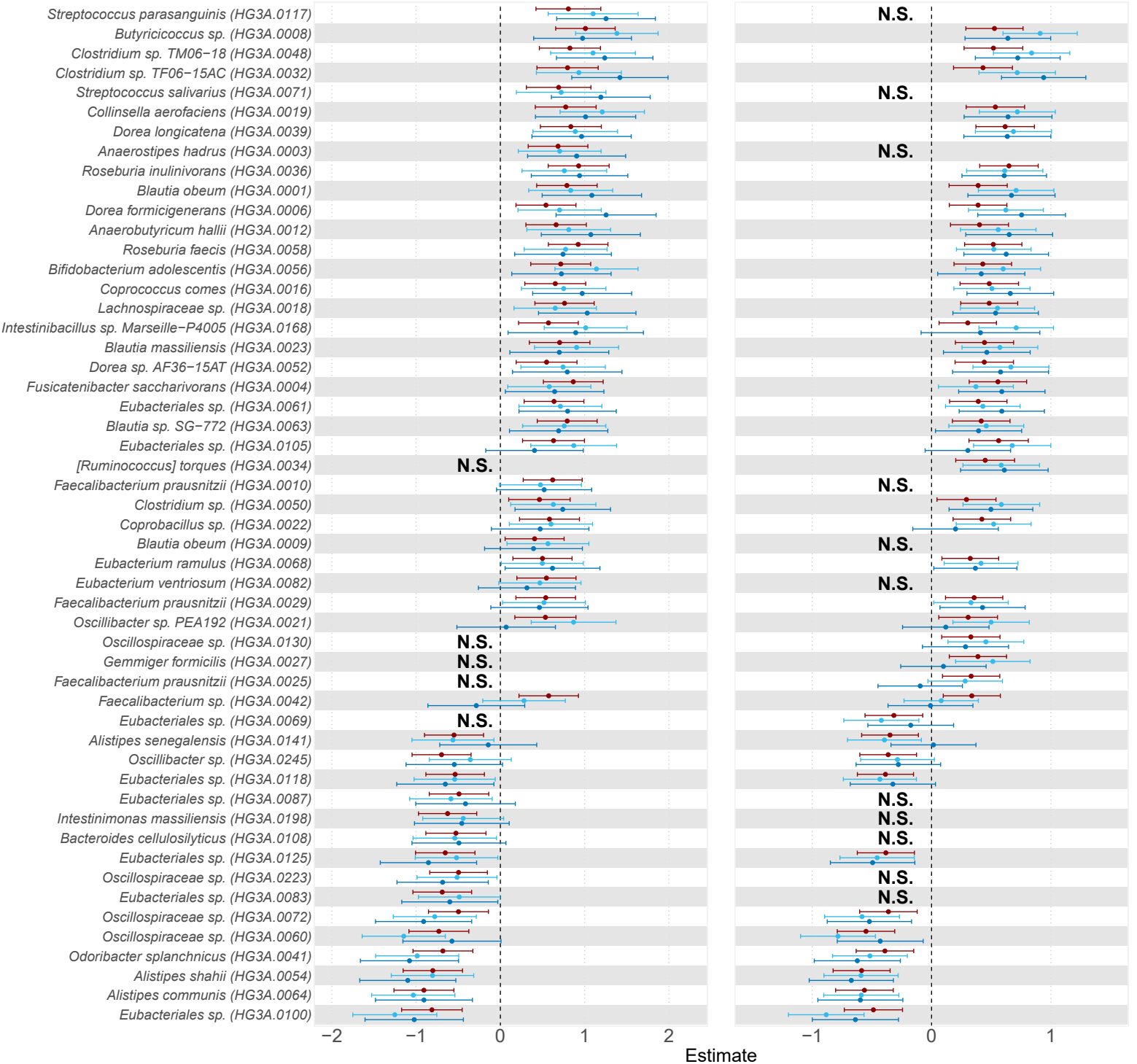


Dorea longicatena (HG3A_0039)
 Collinsella aerofaciens (HG3A_0019)
 Roseburia inulinivorans (HG3A_0036)
 Fusicatena bacter saccharivorans (HG3A_0044)
 Butyrivibrio sp. (HG3A_0008)
 Roseburia faecis (HG3A_0058)
 Clostridium sp. TM06-18 (HG3A_0048)
 Lachnospiraceae sp. (HG3A_0018)
 Blautia massiliensis (HG3A_0023)
 Clostridium sp. AT4 (HG3A_0347)
 Bifidobacterium adolescentis (HG3A_0056)
 Eubacteriales sp. (HG3A_0128)
 Blautia sp. SG-772 (HG3A_0063)
 Blautia obeum (HG3A_0001)
 Clostridium sp. TF06-15AC (HG3A_0032)
 Coprococcus comes (HG3A_0016)
 Anaerobutyricum hallii (HG3A_0012)
 Dorea formicigenens (HG3A_0008)
 Clostridium sp. (HG3A_0050)
 Dorea sp. AF-36-15AT (HG3A_0052)
 Eubacteriales sp. (HG3A_0105)
 Coprobacillus sp. (HG3A_0027)
 Oscillibacter sp. PEA192 (HG3A_0021)
 Faecalibacterium sp. (HG3A_0042)
 Eubacteriales sp. (HG3A_0061)
 Clostridiaceae sp. (HG3A_0431)
 Faecalibacterium prausnitzii (HG3A_0029)
 Intestinibacillus sp. Marseille-P4005 (HG3A_0140)
 Eubacterium ramulus (HG3A_0068)
 Anaerostipes hadrus (HG3A_0003)
 Streptococcus parasanguinis (HG3A_0117)
 Streptococcus salivarius (HG3A_0071)
 Faecalibacterium prausnitzii (HG3A_0010)
 Eubacterium ramulus (HG3A_0387)
 Eubacterium ventriosum (HG3A_0027)
 Lachnospiraceae sp. (HG3A_1272)
 Limosilactobacillus mucosae (HG3A_0953)
 Collinsella intestinalis (HG3A_0102)
 Clostridiaceae sp. (HG3A_0491)
 Oscillospiraceae sp. (HG3A_0256)
 Blautia obeum (HG3A_0009)
 [Ruminococcus] torques (HG3A_0130)
 Oscillospiraceae sp. (HG3A_0130)
 Gemmiger formicilis (HG3A_0027)
 Faecalibacterium prausnitzii (HG3A_0029)
 Eubacteriales sp. (HG3A_0335)
 Dorea sp. AF24-7LB (HG3A_0086)
 Allisonella histaminiformans (HG3A_0332)
 Clostridium phocensis (HG3A_0151)
 Pediococcus acidilactici (HG3A_1488)
 Ruminococcus sp. (HG3A_0487)
 Prevotella copri (HG3A_0237)
 Senegalimassilia faecalis (HG3A_0467)
 Lachnospiraceae sp. (HG3A_0217)
 Eubacteriales sp. (HG3A_0443)
 Eubacteriales sp. (HG3A_0381)
 Eubacteriales sp. (HG3A_0409)
 Eubacteriales sp. (HG3A_0397)
 Firmicutes sp. (HG3A_1053)
 Clostridia sp. (HG3A_0928)
 Bacteria sp. (HG3A_0250)
 Anaerotruncus massiliensis (HG3A_0460)
 Eubacteriales sp. (HG3A_0442)
 Eubacteriales sp. (HG3A_0431)
 Eubacteriales sp. (HG3A_0751)
 Eubacteriales sp. (HG3A_1445)
 Eubacteriales sp. (HG3A_0899)
 Eubacteriales sp. (HG3A_0447)
 Eubacteriales sp. (HG3A_0609)
 Eubacteriales sp. (HG3A_0514)
 Eubacteriales sp. (HG3A_0514)
 Eubacteriales sp. (HG3A_0197)
 Firmicutes sp. (HG3A_0398)
 Clostridia sp. (HG3A_0398)
 Ruminococcus champanellensis (HG3A_0716)
 Eubacteriales sp. (HG3A_0383)
 Clostridia sp. (HG3A_0398)
 Eubacteriales sp. (HG3A_0136)
 Eggerthellales sp. (HG3A_1570)
 Eubacteriales sp. (HG3A_1136)
 Eubacteriales sp. (HG3A_0449)
 Eubacteriales sp. (HG3A_0685)
 Eubacteriales sp. (HG3A_0249)
 Eubacteriales sp. (HG3A_0069)
 Eubacteriales sp. (HG3A_0468)
 Clostridium sp. OM07-9AC (HG3A_0448)
 Lachnospiraceae sp. (HG3A_0127)
 Eubacteriales sp. (HG3A_0087)
 Oscillospiraceae sp. (HG3A_0223)
 Eubacteriales sp. (HG3A_1167)
 Bacteroidales sp. (HG3A_1180)
 Eubacteriales sp. (HG3A_0577)
 Bacteroides cellulosilyticus (HG3A_0108)
 Lachnospiraceae sp. (HG3A_0903)
 Eubacteriales sp. (HG3A_0836)
 Eubacteriales sp. (HG3A_0588)
 Oxalobacter formigenes (HG3A_0552)
 Eubacteriales sp. (HG3A_0781)
 Eubacteriales sp. (HG3A_0083)
 Eubacteriales sp. (HG3A_0311)
 Eubacteriales sp. (HG3A_0450)
 Methanobrevibacter smithii (HG3A_0286)
 Intestinimonas massiliensis (HG3A_0198)
 Eubacteriales sp. (HG3A_0149)
 Oscillospiraceae sp. (HG3A_0207)
 Bacteria sp. (HG3A_0483)
 Eubacteriales sp. (HG3A_0859)
 Eubacteriales sp. (HG3A_0162)
 Eubacteriales sp. (HG3A_0193)
 Eubacteriales sp. (HG3A_0215)
 Lachnospiraceae sp. (HG3A_0399)
 Alistipes senegalensis (HG3A_0141)
 Eubacterium sp. AM49-13BH (HG3A_0251)
 Eubacteriales sp. (HG3A_0118)
 Oscillospiraceae sp. (HG3A_0210)
 Oscillospiraceae sp. (HG3A_0507)
 Eubacteriales sp. (HG3A_0242)
 Oscillospiraceae sp. (HG3A_0072)
 Eubacteriales sp. (HG3A_0265)
 Eubacteriales sp. (HG3A_0600)
 Eubacteriales sp. (HG3A_0654)
 Bacteroides intestinalis (HG3A_0265)
 Eubacteriales sp. (HG3A_0441)
 Eubacteriales sp. (HG3A_0565)
 Eubacteriales sp. (HG3A_0316)
 Eubacteriales sp. (HG3A_0857)
 Oscillospiraceae sp. (HG3A_0060)
 Eubacteriales sp. (HG3A_0697)
 Oscillibacter sp. (HG3A_0245)
 Eubacteriales sp. (HG3A_0269)
 Clostridia sp. (HG3A_0140)
 Eubacteriales sp. (HG3A_0125)
 Odoribacter splanchnicus (HG3A_0041)
 Oscillospiraceae sp. (HG3A_0437)
 Eubacteriales sp. (HG3A_0154)
 Alistipes communis (HG3A_0064)
 Alistipes shahii (HG3A_0054)
 Eubacteriales sp. (HG3A_0100)



SBP

DBP



Estimate