

1 Explaining the stable coexistence of drug-resistant and - 2 susceptible pathogens: the Resistance Acquisition 3 Purifying Selection model

4 Pleuni S Pennings
5 San Francisco State University
6

7 **Keywords:** drug resistance; antibiotic resistance; coexistence; mutation-selection balance; HIV; *E. coli*.

8 **Abstract**

9 Drug resistance is a problem in many pathogens, including viruses, bacteria, fungi and parasites (Murray et
10 al. 2022). While overall, levels of resistance have risen in recent decades, there are many examples where
11 after an initial rise, levels of resistance have stabilized (Krieger et al. 2020; Colijn et al. 2009; Diekema et
12 al. 2019; Rhee et al. 2019; Rocheleau et al. 2018). The stable coexistence of resistance and susceptibility
13 has proven hard to explain (Krieger et al. 2020; Colijn et al. 2009; Cobey et al. 2017; Kouyos, Klein, and
14 Grenfell 2013; Blanquart et al. 2018). Here, we show that a simple stochastic model, mathematically akin
15 to mutation-selection balance theory, can explain several key observations about drug resistance: (1) the
16 stable coexistence of resistant and susceptible strains (2) at levels that depend on population-level drug
17 usage and (3) with resistance often due to many different strains (resistance is present on many different
18 genetic backgrounds). The model works for resistance due to both mutations or horizontal gene transfer
19 (HGT). It predicts that new resistant strains should continuously appear (through mutation or HGT and
20 positive selection within treated hosts) and disappear (due to the fitness cost of resistance). The result is
21 that while resistance is stable, *which* strains carry resistance is constantly changing. We used data from a
22 longitudinal genomic study on *E. coli* in Norway to test this prediction for resistance to five different drugs
23 and found that, consistent with the model, most resistant strains indeed disappear quickly after they appear
24 in the dataset.
25

26 **Significance statement**

27 It is unclear why drug-resistant and drug-susceptible strains of pathogens can co-exist. Basic evolutionary
28 models would predict that one or the other would have higher fitness and thus take over the population.
29 Here we propose the Resistance Acquisition - Purifying Selection model that can explain how resistant
30 strains appear (due to treatment) and disappear (due to a fitness cost of resistance). We show how *E.*
31 *coli* data are mostly consistent with the model. A better understanding of the balance between resistant and
32 susceptible strains can help design interventions to reduce resistance levels.

33 Introduction

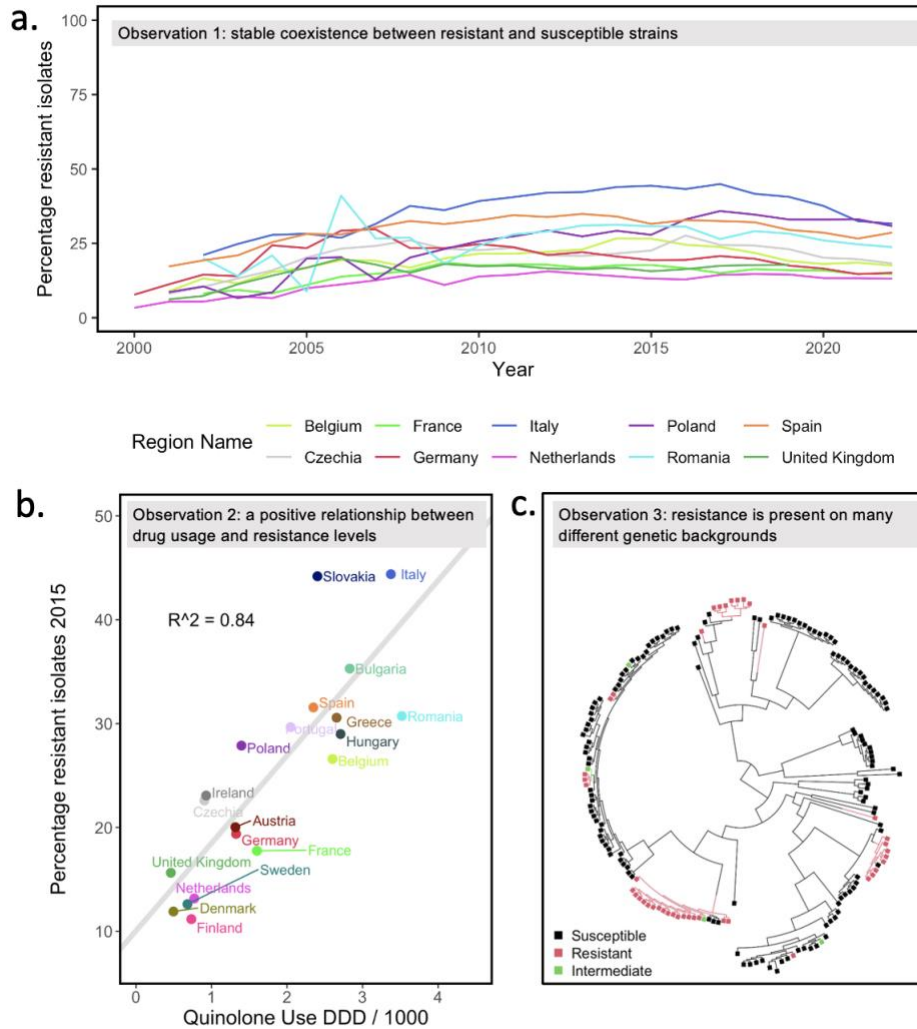
34 Drug resistance is common in viruses (HIV), bacteria (*S. aureus*, *E. coli*, *M. tuberculosis*), parasites (*P.*
35 *falciparum*) and fungi (*Candida* species), making it a major public health threat [1]. What can we do to
36 prevent the rise of drug-resistant strains? Or to revert the trend if the level of resistance is already high? To
37 plan successful science-backed interventions, we must understand what determines the level of drug
38 resistance in each pathogen. Therefore, a need exists for better models to explain current resistance levels,
39 predict how resistance rates will change over time and identify which interventions would most reduce the
40 burden of resistance. Here, we present a simple model that does all these things.

41 Any model that might be used to predict drug resistance levels for different pathogens must be able
42 to explain several observations that are currently not well explained [2,3,12]. First, while overall drug
43 resistance has increased over the years, in many cases, an initial increase in resistance is followed by stable
44 coexistence between drug-resistant and drug-sensitive strains. For an example, see **Figure 1A** on quinolone
45 resistance in *E. coli* in Europe. Other examples of stable coexistence of resistant and susceptible strains can
46 be found in *S. pneumoniae* [2,3], *S. aureus* [4] and HIV [5,6]). Second, a positive linear relationship has
47 been observed between treatment intensity at the population level and drug resistance levels [13](**Figure**
48 **1B**). And third, many different resistant strains (i.e., resistance on different genetic backgrounds) often
49 segregate at the same time in a pathogen population [5,14] (see **Figure 1C** for an example of resistance to
50 the quinolone drug ciprofloxacin in *E. coli* in the UK; resistance appears repeatedly on the phylogenetic
51 tree [15,16]).

52 The second observation feels intuitive to most of us: If we use more drugs, we get more drug
53 resistance. But the first observation of stable coexistence, is puzzling: if there is selection *for* drug
54 resistance, why doesn't the level of resistance keep increasing until it reaches 100%? The third observation
55 of resistance in many strains or genetic backgrounds, can be seen in many phylogenetic trees in articles
56 about drug resistance, but usually does not receive a lot of attention. For example, in a large study of HIV
57 isolates in Northern California, Rhee and colleagues found 82 phylogenetic clusters with one or more drug-
58 resistance mutations [5]. In an *E. coli* dataset from the UK, 31 independent phylogenetic clusters with
59 ciprofloxacin-resistant strains were found [15], and Casali and colleagues found 106 independent
60 phylogenetic clusters with pyrazinamide resistance in *M. tuberculosis* [17]. These results show that
61 resistance has evolved *de novo* or been acquired through horizontal gene transfer (HGT) many times
62 [18,19].

63 Several different explanations have been put forward to explain the coexistence of resistance and
64 susceptibility and the positive relationship between treatment and resistance levels [2,3]. These
65 explanations have usually focused on mechanisms that require population structure or coinfection to create
66 stabilizing selection [2,3,7–9]. We propose a simpler model akin to mutation-selection balance. Our model
67 requires few assumptions, which means it could be applicable to a large variety of pathogens, and few
68 parameters, which makes it easy to use.

69 We call our model the “resistance acquisition and purifying selection” (RAPS) model and will
70 show that it can explain all three key observations about drug resistance listed previously. We will also
71 describe which observations cannot directly be explained by the RAPS model. Note that when resistance is
72 due to HGT, we don't aim to explain why genetic elements that confer drug resistance exist or how they
73 evolved, but rather why they are carried by a stable frequency of strains in pathogen populations.



74
75 **Figure 1. Three key observations about drug resistance, illustrated with data on resistance to quinolones in *E.***
76 ***coli*.** **a.** Observation 1. Typically, an initial increase in resistance is followed by stable coexistence between drug-
77 resistant and drug-sensitive strains. Each line depicts the fraction of *E. coli* strains resistant to quinolones in a country
78 over two decades in the 10 most populous countries (formerly) in the European Union (EU). **b.** Observation 2.
79 Treatment intensity at the country level is correlated with drug resistance levels. A strong positive correlation exists
80 between quinolone usage and quinolone resistance levels in 20 countries in the EU. Publicly available data from the
81 [Surveillance Atlas of Infectious Diseases](#) were used to create Figures 1a and 1b [20,21]. **c.** Observation 3. Many
82 different resistant strains often segregate at the same time. Quinolone (specifically ciprofloxacin) resistance in
83 bacteremia patients in the UK is due to many different origins of resistance (here only phylogroup D and F are shown).
84 Data from [16], figure reproduced from [15].

85 **The resistance acquisition – purifying selection (RAPS) model**

86 Here we show that the RAPS model based on classic mutation-selection balance can explain the three
87 striking observations of drug resistance at the population level: (1) a stable coexistence of resistance and
88 susceptibility, (2) a positive relationship between drug usage and resistance levels, and (3) the simultaneous
89 existence of many drug-resistant strains. Note that our goal here is not to determine whether the RAPS

90 model can better explain the data than the models proposed by others. Instead, we provide a proof of concept
91 to show that the model can, in principle, lead to the main observations and should be considered as a
92 possibility. The RAPS model works for resistance acquisition due to *de novo* mutation or HGT.

93 The RAPS model is based on the classic mutation-selection balance model, because this model has
94 already been used to explain a stable level of deleterious mutations and the existence of multiple alleles that
95 carry a deleterious mutation [22,23]. Mutation-selection balance is a well-understood dynamic equilibrium,
96 and we can borrow mathematical results from that theory directly here [24,25].

97 Mutation-selection balance has not received much attention as a potential explanation for drug
98 resistance patterns. We see three main reasons for this omission: First, it is erroneously believed that
99 mutation-selection balance can only lead to resistance frequencies close to 0%, whereas observed drug
100 resistance frequencies are often much higher. Second, in the basic form, the model only considers negative
101 selection (*against* mutations) and not positive selection (*for* mutations), whereas in the case of drug
102 resistance, we know that positive selection plays an important role too. Third, a lot of focus in drug
103 resistance research has been on well-established resistant strains. While well-established strains indeed
104 require an explanation, it is important to realize that a lot of resistance is not due to these well-established
105 strains.

106 In the basic mutation-selection balance model, mutation creates deleterious alleles at probability μ
107 per individual per generation and these alleles reduce the fitness of the individual carrying them by selection
108 coefficient s per generation, see Table 1. Standard population genetic theory then predicts that the
109 deleterious allele frequency is μ/s [24].

110 To apply mutation-selection equilibrium theory to the problem of drug resistance, we make several
111 adjustments. First, as others have done, we treat the population of the pathogen as a metapopulation where
112 each host is considered a “deme” [26]. Hosts can be infected (I), susceptible to infection (S) and recovered
113 (R). Time is measured in units of duration of infection, so that R_0 is the expected number of new infections
114 (i.e., newly colonized demes) in a situation where all demes are susceptible [26] (alternatively, time could
115 be measured per month or year, as we will do in the discussion). Next, we assume that demes have a
116 probability, *t.e.*, per unit of time, to be treated (*t*) and to evolve to become resistant (*e*). The treatment
117 parameter *t* is the probability (per unit time) that the host is treated, and the evolution parameter *e* is the
118 probability that the within-host pathogen population evolves to become resistant through mutation or the
119 acquisition of a genetic element, given that the host is treated. Mathematically, *t.e* plays the role of the
120 mutation parameter μ in the standard model (see Table 1). Next, we assume that resistance comes with a
121 mild fitness cost, *c*, which can be understood as a reduction in R_0 compared to the R_0 of the susceptible
122 pathogen strain. The fitness cost parameter, *c*, determines how likely the resistant strain is to be transmitted
123 to non-resistant hosts [27]. Mathematically, *c* plays the role of *s* (negative selection) in the standard
124 mutation-selection model (see Table 1). We refer to the fraction of hosts that is infected with a resistant
125 strain out of all infected hosts as *f*. Only hosts with susceptible strains (*1-f* of the pathogen population) can
126 evolve to become resistant.

127 Under this model, the frequency of resistant strains, *f*, will increase with *t.e*(*1-f*) per unit time
128 through positive selection within hosts and will be reduced by negative selection with *-c.f*(*1-f*). Thus, the
129 change in frequency (*f'*) can be written as:

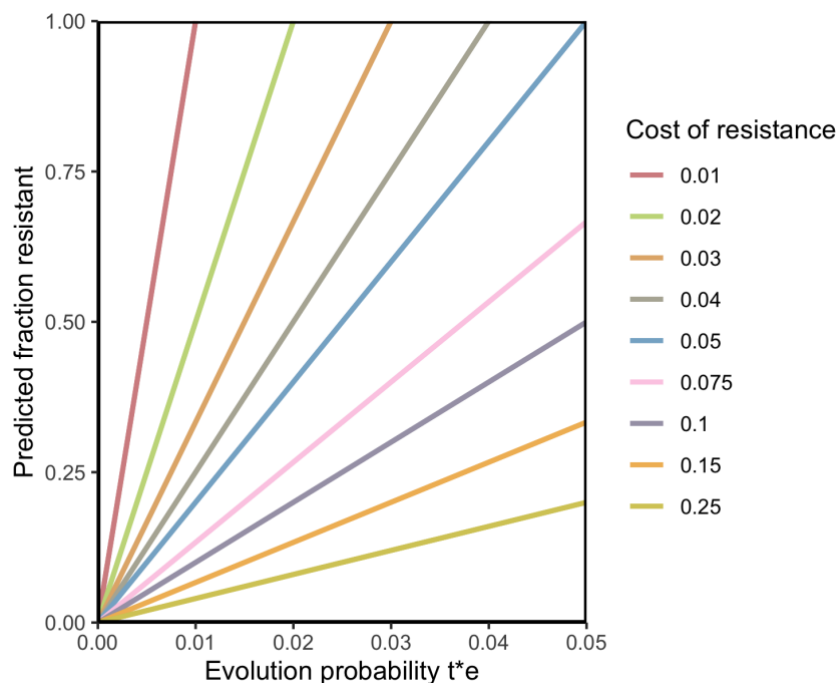
$$130 \quad f' = (t \cdot e) (1 - f) - c \cdot f(1 - f) .$$

131 An equilibrium will thus be reached when

$$132 \quad (t \cdot e) (1 - f) = c \cdot f (1 - f) ,$$

133 which means that the predicted equilibrium frequency of resistance will be:

134 $f = (t \cdot e)/(c)$, see **Figure 2**. This equilibrium result can explain the stability of the level of
 135 resistance (f), the linear relationship between treatment levels (through t) and the level of resistance (f),
 136 while allowing for evolution of new resistant strains to occur.
 137



138
 139
 140 **Figure 2:** The level of resistance predicted by the Resistance Acquisition –
 141 Purifying Selection (RAPS) model for a population of pathogens is a function of the probability of
 142 resistance evolution per infection, $t \cdot e$, and the cost of resistance, c . Higher levels of treatment lead to
 143 higher values of $t \cdot e$, consistent with Key Observation 2 about drug resistance. Strains acquire resistance
 144 by mutation or through HGT. Resistant strains can be transmitted to other hosts, with an R_0 that is reduced
 145 by c compared to the R_0 of susceptible strains.

146
 147 **Table 1.** Parameters for resistance acquisition-purifying selection (RAPS) model vs classical mutation-
 148 selection equilibrium model.

Model parameter	Mutation – selection balance		Resistance acquisition – negative selection balance	
Generation of new variants	μ	mutation per generation	$t \cdot e$	treatment and within-host evolution due to treatment per infection
Selection against the variants	s	deleterious selection coefficient per generation	c	cost of drug resistance in the general population per infection
Equilibrium frequency of the variant	$f = \frac{\mu}{s}$		$f = \frac{t \cdot e}{c}$	

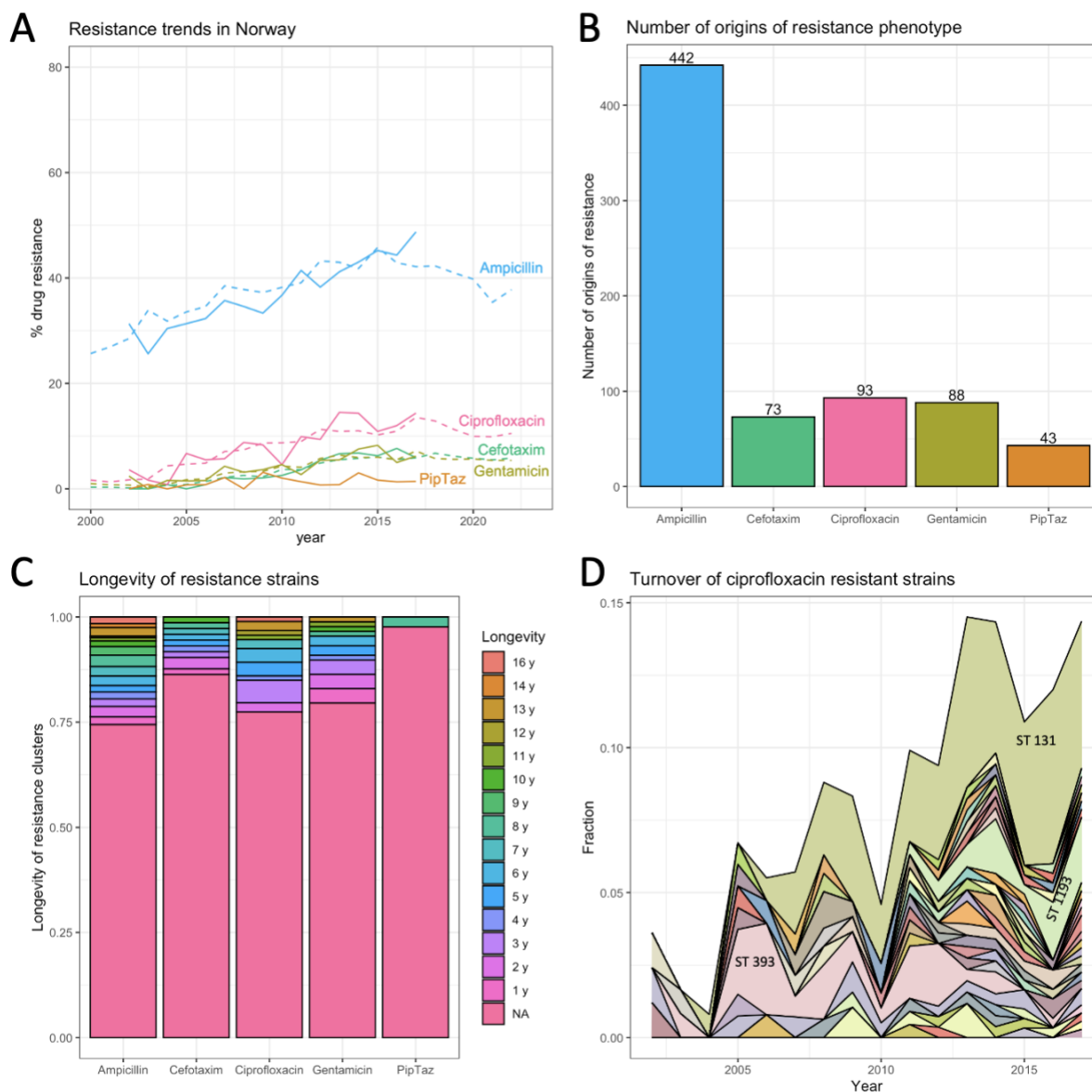
150 **Genomic and phenotypic data**

151 Using 16 years of publicly available data for resistance to several drugs in *E. coli* in Norway [28],
152 we show that resistance acquisition is common and that most resistant strains are short-lived, which is
153 consistent with the RAPS model. We used a dataset of *E. coli* genomes from bloodstream infections in
154 Norway consisting of 3254 isolates from a surveillance program from 2002 - 2017. The fraction resistant
155 strains in the dataset closely follows the reported fractions resistance from the European CDC surveillance
156 atlas (see Figure 3A), which shows that even though the samples come from bloodstream infections, they
157 are capturing important *E. coli* resistance dynamics in Norway.

158 Using the phylogenetic tree and the phenotypic resistance data provided by the authors of the
159 original paper [28], we estimated that ampicillin resistance evolved over 400 times on the tree, and
160 resistance to the other drugs (cefotaxime, ciprofloxacin, gentamicin and piperacillin-tazobactam) evolved
161 between 43 and 93 times (Figure 3B) [see Methods]. Note that the big difference in the number of
162 evolutionary origins between ampicillin and the other drugs is consistent with the fact that ampicillin is an
163 antibiotic that is much more often prescribed than the others [20].

164 We found that for the five drugs we looked at, at least 75% of the strains were observed in only one
165 year in the dataset (Figure 3C). The lifespan of individual resistant strains was estimated by determining,
166 for each origin of resistance, in which years the resulting resistant strain was observed in the dataset. Next,
167 we created an area plot that shows how most ciprofloxacin (quinolone) resistant strains are only seen for a
168 short time span, but that also shows a few longer-lived strains and one resistant strain that is long-lived and
169 reaches a high frequency (3D). While the many strains that appear and disappear again are consistent with
170 the RAPS model, the model cannot explain the behavior of the strain that increases in frequency over several
171 years. In fact, it is unlikely that this increase is driven by the resistance to ciprofloxacin, instead, as others
172 have suggested, it could be that by chance the ciprofloxacin resistance mutations landed on a background
173 with positively selected elements and are hitchhiking to high frequency [16].

174 In summary, our analysis of the Norwegian dataset shows that resistant strains to five different
175 drugs evolve often, yet most resistant strains do not stay in the population for long, which is consistent with
176 ongoing selection against resistance and with the RAPS model. Yet, there are a few long-lived resistance
177 strains which are unexplained by the RAPS model which account for a significant portion of resistance in
178 *E. coli*.



179
 180 **Figure 3: Dynamics of drug resistant strains in Norway.** *a. Resistance trends in Norway for five drugs*
 181 *based on [20,28]. b. Estimated number of origins of resistance to five drugs. c. Lifespans of resistant*
 182 *strains. d. Turnover of ciprofloxacin (quinolone) resistant strains*

183 Discussion

184 In order to understand, predict and influence levels of drug resistance in pathogens, we need mathematical
 185 models. Here we show that a simple model with strong positive selection for drug resistance within treated
 186 hosts and mild negative (purifying) selection in the rest of the population can explain three key observations
 187 about drug resistance in a variety of pathogens (**Figure 1**). First, the resistance acquisition – purifying
 188 selection (RAPS) model explains the stable coexistence of resistance and susceptibility in pathogen
 189 populations. Second, it explains the positive correlation between the amount of drug used and the frequency

190 of drug resistance (**Figure 2**). And finally, it recapitulates the simultaneous existence of many different
191 strains that carry a resistance mutation or genetic element at any one time (**Figure 1C**).

192 A major strength of the RAPS model is its simplicity. It relies on only a few assumptions and
193 doesn't require consideration of co-infection or spatial structure of the host population. One benefit of this
194 simplicity is that the model is more likely to be applicable to different pathogen systems. The most
195 important assumption we make is that resistance comes with a fitness cost for the pathogen, reducing its
196 R_0 – if that is not the case, resistant strains will outcompete susceptible strains [29]. A major difference
197 between our model and some previous models that attempt to explain stable coexistence of drug resistance
198 and susceptibility [2,3] is that the RAPS model includes the creation and dying out of resistant strains. This
199 can happen even when the specific genetic elements that confer resistance are stably present in the
200 population. One reason why researchers have often chosen to ignore the creation and dying out of resistant
201 strains is because it is assumed that drug-resistant strains are stable. However, stability at the phenotypic
202 level doesn't necessarily mean stability at the genetic level. New strains may evolve resistance in the same
203 way as previous strains, even acquiring genetic elements from previous strains. The result is that the genetic
204 element or the mutation may be stably present, but “who” carries it may always be changing (**Figure 3D**).

205 Another major strength of our model is that it makes clear and testable predictions. 1. It predicts
206 that for a given drug, the higher levels of resistance in countries with high drug usage is due to the fact that
207 resistance acquisition happens more often. We should therefore see more independently evolved resistant
208 strains in countries with high levels of resistance. 2. The lifespan of resistant strains in a population should
209 depend on the cost of the resistance for the pathogen. High-cost resistance should be associated with a
210 shorter life span and, conversely, when resistance strains are generally short-lived this suggests that costs
211 of resistance are high. 3. The time scale at which resistance levels change when treatment habits change
212 should depend on the lifespans of resistant strains. Short life spans mean that a new equilibrium can be
213 reached faster, and interventions should pay off more quickly. Intervention studies where ciprofloxacin
214 (quinolone) use was reduced seem to indicate that this influences resistance levels in a few months [30,31].

215 Thanks to publicly available data, we were able to show that stability at the population level hides
216 dynamic changes at lower levels (see **Figure 3A-D**). Although the resistance phenotype is present at a
217 stable level (**Figure 3A**), resistance is due to many evolutionary origins (**Figure 3B**) and 75% of resistant
218 strains are only present for a year (**Figure 3C-D**). It will be of interest to see if more granular data (e.g.,
219 monthly surveillance from a hospital) would show the waxing and waning of resistant strains. A major open
220 question is why there are some long-lived resistance strains while most are so short-lived. Are these long-
221 lived strains hitchhiking with other genetic elements as others have suggested [16]? Do these strains
222 occasionally lose the resistant phenotype, as would be expected if the resistance is a costly hitchhiker?

223 It is of interest to see if what we know about treatment levels and drug resistance evolution
224 probabilities roughly fits with the model. We are aware of estimates for f (fraction resistant), t (treatment
225 probability per year) and e (probability of evolution given treatment) for quinolone drugs. We can plug in
226 those numbers in the equilibrium equation to get an (admittedly very rough) estimate for the cost of
227 resistance per year. In 2015, the fraction of *E. coli* resistant to quinolones $f \approx 10\%$ in Norway. We also
228 know, for Norway, that the use of quinolones is around 0.5 doses per day per 1000 people [21]. If we
229 assume that a course of quinolones is 5 days, this translates into $t \approx 3.3\%$ probability per year of someone
230 taking a course of quinolones ($((0.5 \text{ DDD} * 365 \text{ days}) / (5 \text{ days per course} * 1000 \text{ people}) * 100\%)$). A recent
231 study estimated that the probability of resistance evolution due to a course of quinolones is $e \approx 10\%$ [32].
232 Because our model proposes that $f = (t \cdot e) / (c)$, we have $0.1 = 0.033 * 0.1 / c$, which means that the
233 fitness cost should be around 0.033 or 3.3% per year. While we cannot currently know if this number is

234 correct, it is encouraging to see that the number is at least of an order of magnitude that seems plausible. It
235 would be of interest to see whether phylogenetic approaches can be used to determine if resistant strains
236 indeed have a lower R_0 compared to non-resistant strains [33,34].

237 If stable levels of resistance mask the ongoing appearance of new resistant strains, this may have
238 implications for machine learning methods that are used to predict drug resistance phenotypes from
239 genomic data. At any given year and location, a machine learning algorithm may learn to recognize certain
240 strains responsible for much of the resistance burden in a species. Yet, over time, these resistant strains may
241 be replaced by others, which means that we likely need to re-train such models for current and local
242 situations [35].

243 Our study has several limitations. One limitation is that the model considers only resistance to a
244 single drug and not interactions between drugs or resistances. For example, when plasmids carry multiple
245 resistance genes, resistance to one drug can be acquired due to selection for resistance to another drug. We
246 also assumed that treatment does not affect transmission. If treatment itself is associated with strongly
247 reduced transmission (as is the case in HIV), then it would be useful if the model included the treatment
248 state of hosts, where the transmission probability of hosts on treatment is significantly lower than those not
249 on treatment [33,36]. The cost of resistance may also vary between strains and may be affected by
250 compensatory mutations [29,37].

251 In conclusion, we propose a simple model that explains why drug resistance can stably co-exist
252 with susceptible strains at levels that depend on drug usage. The model also explains why drug resistance
253 is often present in many different strains (phylogenetic clusters, genetic backgrounds or sequence types)
254 and predicts that resistant strains evolve and disappear again regularly. Data for resistance to several drugs
255 in *E. coli* in Norway are largely consistent with these predictions, though the model does not explain why
256 some resistant strains are seen over many years. This novel model has the potential to help us understand,
257 predict and influence drug resistance levels and because of its simplicity, it can be readily tested in many
258 different pathogen systems such as *S. pneumoniae* [2,3], *S. aureus* [4] and HIV [5,6]).

259 **Acknowledgements**

260 I am grateful for comments from and discussions with Kristin Harper, Joachim Hermisson, Sarah Cobey,
261 Alison Feder, Nandita Garud, Oana Carja, Rasmus Nielsen, Alison Hill, Scott Roy, Brandon Ogbunu, Ruth
262 Hershberg and the students in the SFSU CodeLab.

263 **Bibliography**

- 264 1. Murray CJL, Ikuta KS, Sharara F, Swetschinski L, Aguilar GR, Gray A, et al. Global burden of
265 bacterial antimicrobial resistance in 2019: a systematic analysis. *The Lancet*. 2022;399: 629–655.
266 doi:10.1016/S0140-6736(21)02724-0
- 267 2. Krieger MS, Denison CE, Anderson TL, Nowak MA, Hill AL. Population structure across scales
268 facilitates coexistence and spatial heterogeneity of antibiotic-resistant infections. *PLOS Comput Biol*.
269 2020;16: e1008010. doi:10.1371/journal.pcbi.1008010
- 270 3. Colijn C, Cohen T, Fraser C, Hanage W, Goldstein E, Givon-Lavi N, et al. What is the mechanism
271 for persistent coexistence of drug-susceptible and drug-resistant strains of *Streptococcus*
272 *pneumoniae*? *J R Soc Interface*. 2009;7: 905–919. doi:10.1098/rsif.2009.0400
- 273 4. Diekema DJ, Pfaller MA, Shortridge D, Zervos M, Jones RN. Twenty-Year Trends in Antimicrobial
274 Susceptibilities Among *Staphylococcus aureus* From the SENTRY Antimicrobial Surveillance

- 275 Program. *Open Forum Infect Dis.* 2019;6: S47–S53. doi:10.1093/ofid/ofy270
- 276 5. Rhee S-Y, Clutter D, Fessel WJ, Klein D, Slome S, Pinsky BA, et al. Trends in the Molecular
277 Epidemiology and Genetic Mechanisms of Transmitted Human Immunodeficiency Virus Type 1
278 Drug Resistance in a Large US Clinic Population. *Clin Infect Dis.* 2019;68: 213–221.
279 doi:10.1093/cid/ciy453
- 280 6. Rocheleau G, Brumme CJ, Shoveller J, Lima VD, Harrigan PR. Longitudinal trends of HIV drug
281 resistance in a large Canadian cohort, 1996–2016. *Clin Microbiol Infect.* 2018;24: 185–191.
282 doi:10.1016/j.cmi.2017.06.014
- 283 7. Cobey S, Baskerville EB, Colijn C, Hanage W, Fraser C, Lipsitch M. Host population structure and
284 treatment frequency maintain balancing selection on drug resistance. *J R Soc Interface.* 2017;14:
285 20170295. doi:10.1098/rsif.2017.0295
- 286 8. Kouyos R, Klein E, Grenfell B. Hospital-Community Interactions Foster Coexistence between
287 Methicillin-Resistant Strains of *Staphylococcus aureus*. *PLOS Pathog.* 2013;9: e1003134.
288 doi:10.1371/journal.ppat.1003134
- 289 9. Blanquart F, Lehtinen S, Lipsitch M, Fraser C. The evolution of antibiotic resistance in a structured
290 host population. *J R Soc Interface.* 2018;15: 20180040. doi:10.1098/rsif.2018.0040
- 291 10. Schuts EC, Boyd A, Muller AE, Mouton JW, Prins JM. The Effect of Antibiotic Restriction
292 Programs on Prevalence of Antimicrobial Resistance: A Systematic Review and Meta-Analysis.
293 *Open Forum Infect Dis.* 2021;8: ofab070. doi:10.1093/ofid/ofab070
- 294 11. Chatzopoulou M, Reynolds L. Role of antimicrobial restrictions in bacterial resistance control: a
295 systematic literature review. *J Hosp Infect.* 2020;104: 125–136. doi:10.1016/j.jhin.2019.09.011
- 296 12. Davies NG, Flasche S, Jit M, Atkins KE. Within-host dynamics shape antibiotic resistance in
297 commensal bacteria. *Nat Ecol Evol.* 2019;3: 440–449. doi:10.1038/s41559-018-0786-x
- 298 13. Goossens H, Ferech M, Stichele RV, Elseviers M. Outpatient antibiotic use in Europe and association
299 with resistance: a cross-national database study. *The Lancet.* 2005;365: 579–587. doi:10.1016/S0140-
300 6736(05)17907-0
- 301 14. Nübel U, Roumagnac P, Feldkamp M, Song J-H, Ko KS, Huang Y-C, et al. Frequent emergence and
302 limited geographic dispersal of methicillin-resistant *Staphylococcus aureus*. *Proc Natl Acad Sci.*
303 2008;105: 14130–14135. doi:10.1073/pnas.0804178105
- 304 15. van Nouhuijs F, Antony MA, Orcales F, Gozashti L, Roy SW, Ogbunugafor CB, et al. A
305 phylogenetic approach to studying the roles of within-host evolution and between-host transmission
306 of resistance for clinical *Escherichia coli* infections. *Evolutionary Biology*; 2022 Dec.
307 doi:10.1101/2022.12.16.520823
- 308 16. Kallonen T, Brodrick HJ, Harris SR, Corander J, Brown NM, Martin V, et al. Systematic longitudinal
309 survey of invasive *Escherichia coli* in England demonstrates a stable population structure only
310 transiently disturbed by the emergence of ST131. *Genome Res.* 2017. doi:10.1101/gr.216606.116
- 311 17. Casali N, Nikolayevskyy V, Balabanova Y, Harris SR, Ignatyeva O, Kontsevaya I, et al. Evolution
312 and transmission of drug-resistant tuberculosis in a Russian population. *Nat Genet.* 2014;46: 279–
313 286. doi:10.1038/ng.2878
- 314 18. Nubel U, Roumagnac P, Feldkamp M, Song J-H, Ko KS, Huang Y-C, et al. Frequent emergence and
315 limited geographic dispersal of methicillin-resistant *Staphylococcus aureus*. *Proc Natl Acad Sci.*
316 2008;105: 14130–14135. doi:10.1073/pnas.0804178105
- 317 19. Shin J, Choi M-J, Ko KS. Replicon sequence typing of IncF plasmids and the genetic environments
318 of blaCTX-M-15 indicate multiple acquisitions of blaCTX-M-15 in *Escherichia coli* and *Klebsiella*
319 *pneumoniae* isolates from South Korea. *J Antimicrob Chemother.* 2012;67: 1853–1857.
320 doi:10.1093/jac/dks143
- 321 20. ECDC. Surveillance Atlas of Infectious Diseases. 28 Apr 2023 [cited 29 May 2024]. Available:
322 <https://www.ecdc.europa.eu/en/surveillance-atlas-infectious-diseases>
- 323 21. ECDC. Antimicrobial consumption - Annual Epidemiological Report for 2015. 12 Jun 2018 [cited 29
324 May 2024]. Available: [https://www.ecdc.europa.eu/en/publications-data/antimicrobial-consumption-
325 annual-epidemiological-report-2015](https://www.ecdc.europa.eu/en/publications-data/antimicrobial-consumption-annual-epidemiological-report-2015)

- 326 22. Wakeley J. Conditional Gene Genealogies under Strong Purifying Selection. *Mol Biol Evol.* 2008;25:
327 2615–2626. doi:10.1093/molbev/msn209
- 328 23. Hartl DL, Campbell RB. Allele multiplicity in simple Mendelian disorders. *Am J Hum Genet.*
329 1982;34: 866–873.
- 330 24. Baum DA, Futuyma DJ, Hoekstra HE, Lenski RE, Moore AJ, Peichel CL, et al. *The Princeton Guide*
331 *to Evolution.* Princeton University Press; 2017.
- 332 25. Hartl DL, Clark AG. *Principles of Population Genetics.* Fourth Edition, Fourth Edition. Oxford, New
333 York: Oxford University Press; 2006.
- 334 26. Gordo I, Gomes MGM, Reis DG, Campos PRA. Genetic Diversity in the SIR Model of Pathogen
335 Evolution. *PLoS ONE.* 2009;4: e4876. doi:10.1371/journal.pone.0004876
- 336 27. Wagner BG, Garcia-Lerma JG, Blower S. Factors limiting the transmission of HIV mutations
337 conferring drug resistance: fitness costs and genetic bottlenecks. *Sci Rep.* 2012;2: 320.
338 doi:10.1038/srep00320
- 339 28. Gladstone RA, McNally A, Pöntinen AK, Tonkin-Hill G, Lees JA, Skytén K, et al. Emergence and
340 dissemination of antimicrobial resistance in *Escherichia coli* causing bloodstream infections in
341 Norway in 2002–17: a nationwide, longitudinal, microbial population genomic study. *Lancet*
342 *Microbe.* 2021;2: e331–e341. doi:10.1016/S2666-5247(21)00031-8
- 343 29. Cohen T, Murray M. Modeling epidemics of multidrug-resistant *M. tuberculosis* of heterogeneous
344 fitness. *Nat Med.* 2004;10: 1117–1121. doi:10.1038/nm1110
- 345 30. Sarma JB, Marshall B, Cleeve V, Tate D, Oswald T, Woolfrey S. Effects of fluoroquinolone
346 restriction (from 2007 to 2012) on resistance in *Enterobacteriaceae*: interrupted time-series analysis. *J*
347 *Hosp Infect.* 2015;91: 68–73. doi:10.1016/j.jhin.2015.05.006
- 348 31. Gottesman BS, Carmeli Y, Shitrit P, Chowers M. Impact of Quinolone Restriction on Resistance
349 Patterns of *Escherichia coli* Isolated from Urine by Culture in a Community Setting. *Clin Infect Dis.*
350 2009;49: 869–875. doi:10.1086/605530
- 351 32. Yaffe E, Dethlefsen L, Patankar AV, Gui C, Holmes S, Relman DA. A short course of antibiotics
352 selects for persistent resistance in the human gut. *bioRxiv*; 2023. p. 2023.09.04.556257.
353 doi:10.1101/2023.09.04.556257
- 354 33. Kühnert D, Kouyos R, Shirreff G, Pečerska J, Scherrer AU, Böni J, et al. Quantifying the fitness cost
355 of HIV-1 drug resistance mutations through phylodynamics. *PLOS Pathog.* 2018;14: e1006895.
356 doi:10.1371/journal.ppat.1006895
- 357 34. Helekal D, Keeling M, Grad YH, Didelot X. Estimating the fitness cost and benefit of antimicrobial
358 resistance from pathogen genomic data. *bioRxiv*; 2022. p. 2022.12.02.518824.
359 doi:10.1101/2022.12.02.518824
- 360 35. Moradigaravand D, Palm M, Farewell A, Mustonen V, Warringer J, Parts L. Prediction of antibiotic
361 resistance in *Escherichia coli* from large-scale pan-genome data. *PLOS Comput Biol.* 2018;14:
362 e1006258. doi:10.1371/journal.pcbi.1006258
- 363 36. Stadler T, Kühnert D, Bonhoeffer S, Drummond AJ. Birth–death skyline plot reveals temporal
364 changes of epidemic spread in HIV and hepatitis C virus (HCV). *Proc Natl Acad Sci.* 2013;110: 228–
365 233. doi:10.1073/pnas.1207965110
- 366 37. Hinz A, Amado A, Kassen R, Bank C, Wong A. Unpredictability of the fitness effects of
367 antimicrobial resistance mutations across environments in *Escherichia coli*. *bioRxiv*; 2023. p.
368 2023.10.25.563906. doi:10.1101/2023.10.25.563906
- 369 38. Bollback JP. SIMMAP: Stochastic character mapping of discrete traits on phylogenies. *BMC*
370 *Bioinformatics.* 2006;7: 88. doi:10.1186/1471-2105-7-88
- 371 39. Revell LJ. *phytools*: an R package for phylogenetic comparative biology (and other things): *phytools*:
372 *R package.* *Methods Ecol Evol.* 2012;3: 217–223. doi:10.1111/j.2041-210X.2011.00169.x
- 373 40. Huelsenbeck JP, Nielsen R, Bollback JP. Stochastic mapping of morphological characters. *Syst Biol.*
374 2003;52: 131–158. doi:10.1080/10635150390192780
- 375

376 **Methods**

377 All code and data are available on github <https://github.com/pleunipennings/CoexistencePaper>.

378 Figure 1A European surveillance data

379 Quinolone resistance over time in 10 European countries.

380 Data were downloaded from the European Surveillance Atlas for Infectious Diseases.

381 Link <https://atlas.ecdc.europa.eu/public/index.aspx>.

382 As health topic, we chose “Antimicrobial resistance”, as subpopulation “*Escherichia coli*” and
383 “fluoroquinolones” and as indicator “percentage resistance”. We then downloaded a csv file with data for
384 all available years and regions
385 (named ECDC_surveillance_data_Antimicrobial_resistance_complete_DownloadApril2024.csv in the
386 Github repository). For Figure 1A we included the 10 most populous countries in the EU, including the
387 United Kingdom: Germany, United Kingdom, France, Italy, Spain, Poland, Romania, Netherlands,
388 Belgium, Czech Republic [20].

389 Figure 1B European surveillance data

390 For figure 1B, we used the percentage fluoroquinolone resistance in 2015 from the dataset described for
391 Figure 1A, but now for the 20 most populous countries. This included in addition to the first 10: Sweden,
392 Portugal, Greece, Hungary, Austria, Bulgaria, Denmark, Finland, Slovakia, Ireland.

393 For data on the use of fluoroquinolones in these countries, we downloaded data from
394 [https://www.ecdc.europa.eu/en/publications-data/antimicrobial-consumption-annual-epidemiological-](https://www.ecdc.europa.eu/en/publications-data/antimicrobial-consumption-annual-epidemiological-report-2015)
395 [report-2015](https://www.ecdc.europa.eu/en/publications-data/antimicrobial-consumption-annual-epidemiological-report-2015) which included “Downloadable tables: Antimicrobial consumption - Annual Epidemiological
396 Report for 2015” [21].

397 Figure 1C *E. coli* phylogenetic tree Kallonen dataset from Nouhuijs et al.

398 The phylogenetic tree in Figure 1C was reproduced from [15]. Data presented here include only *E. coli*
399 strains from phylogroup D and F. The genomes and phenotypes were described in [16]. Briefly, a core
400 genome alignment was used to create a phylogenetic tree, then we simulated a single history of the
401 resistance phenotype using the “simmap” function in Phytools [38,39], the simulated history is shown on
402 the tree with resistant branches in red, susceptible branches in green and intermediate branches in green.

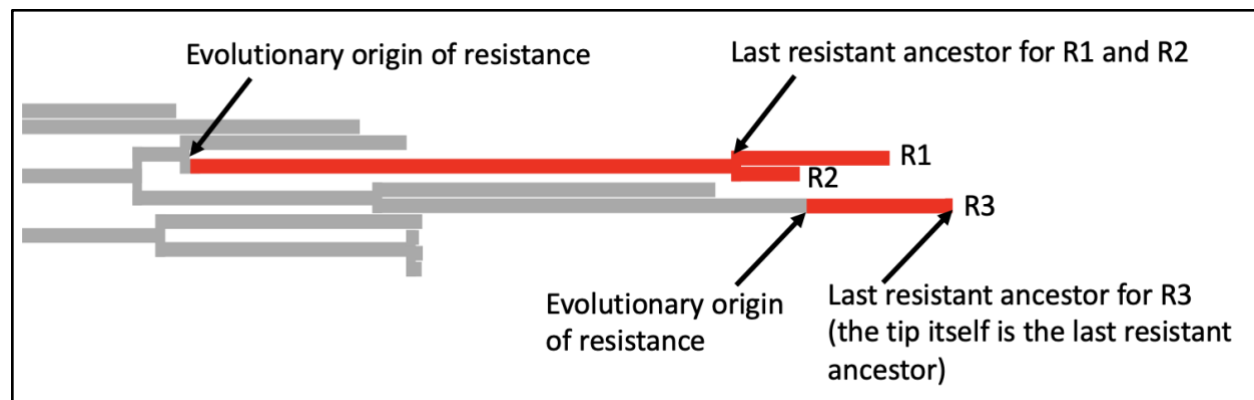
403 Figure 3A Resistance trends in Norway for five drugs

404 Data are from Gladstone, 2021 [28] and from the ECDC Surveillance Atlas [20].

405 Figure 3B Estimated number of origins of resistance to five drugs

406 We used the tree and metadata provided by Gladstone, 2021 [28]. This dataset consists of 16 years of
407 surveillance data including 3254 *E. coli* samples from bacteremia patients in Norway between 2002 and
408 2017. Intermediate and susceptible strains were lumped in one category. We simulated a single history of
409 the resistance phenotype using the “simmap” stochastic character mapping function in Phytools [39] which
410 is based on methods by [38,40]. Next, we used a custom R script to identify the last resistant ancestor for

411 each resistant tip of the tree. If two tips share a last resistant ancestor, we assume that they are resistant due
412 to the same evolutionary origin of resistance. This evolutionary origin may be due to a mutation, several
413 mutations or horizontal gene transfer – our approach is based on the phenotypes, not the genotypes. Based
414 on the simmap results, we count the number of times resistance was acquired on the tree.
415



416
417 Supplementary figure 1. In this example, there are three resistant tips. The branches are colored according to the
418 simmap stochastic character mapping. R1 and R2 share a last resistant ancestor and are therefore
419 assumed to be resistant due to the same evolutionary event in their history, we consider them part of the
420 same resistant cluster or resistant strain. For R3, the last resistant ancestor is itself. It is the only member of
421 the resistant cluster or strain.

422 Figure 3C Lifespans of resistant strains

423 Using the results from analysis described for 3B and the metadata from [28] to determine for each inferred
424 resistance cluster for how many years it was observed in the data. For example, if R1 was a sample from
425 2005 and R2 was a sample from 2007, then we infer that the lifespan of this cluster was 3 years.

426 Figure 3D Turnover of ciprofloxacin (quinolone) resistant strains

427 Using the results from analysis described for 3B and the metadata from [28] to determine for each inferred
428 ciprofloxacin resistance cluster what its frequency was in each year.