

1 **Defecation During Hospitalization for Acute Coronary Syndrome and Future**

2 **Cardiovascular Events**

3

4 **Brief title:** Defecation and events after acute coronary syndrome

5

6 Yasushi Matsuzawa, MD, PhD^{a,b}, Kenichi Tsujita, MD, PhD^a, Masaomi Gohbara, MD, PhD^b,

7 Masanobu Ishii, MD, PhD^{a,c}, Taishi Nakamura, MD, PhD^{a,c}, Hisaya Kondo, MD, PhD^b,

8 Tomohiro Yoshii, MD, PhD^b, Ryusuke Sekii, MD, PhD^b, Jin Kirigaya, MD, PhD^b, Kengo

9 Terasaka, MD, PhD^b, Hidefumi Nakahashi, MD, PhD^b, Eiichi Akiyama, MD, PhD^d, Masaaki

10 Konishi, MD, PhD^e, Toshihiro Yamada, MD, PhD^a, Yuichiro Arima, MD, PhD^{a,f}, Shinsuke

11 Hanatani, MD, PhD^a, Seiji Takashio, MD, PhD^a, Hiroki Usuku, MD, PhD^{a,g}, Eiichiro Yamamoto,

12 MD, PhD^a, Masami Kosuge, MD, PhD^b, Kazuo Kimura, MD, PhD^h, Kiyoshi Hibi MD, PhD^{b,e}

13

14 Total word count from Introduction through Conclusion: 3051

15

16 ^a Department of Cardiovascular Medicine, Graduate School of Medical Sciences, Kumamoto

17 University, Kumamoto, Japan

18 ^b Division of Cardiology, Yokohama City University Medical Center, Yokohama, Japan

19 ^c Department of Medical Information Science, Graduate School of Medical Sciences, Kumamoto

20 University, Kumamoto, Japan

21 ^d Kawaguchi Cardiovascular and Respiratory Hospital, Saitama, Japan.

22 ^e Department of Medical Science and Cardiorenal Medicine, Yokohama City University

23 Graduate School of Medicine, Yokohama, Japan.

1 ^f International Research Center for Medical Sciences (IRCMS), Kumamoto University,
2 Kumamoto, Japan.

3 ^g Department of Laboratory Medicine, Kumamoto University Hospital, Kumamoto, Japan

4 ^h Yokosuka City Hospital, Yokosuka, Japan.

5

6 **Funding:** This research was supported by a grant from the Japan Society for the Promotion of
7 Science (JSPS) under Grant-in-Aid for Scientific Research (Kakenhi) [grant number 18K15896
8 and 21K08083]."

9 **Disclosure of interest:** non declared.

10 **Corresponding author:** Yasushi Matsuzawa, MD, PhD

11 Department of Cardiovascular Medicine, Graduate School of Medical Sciences, Kumamoto
12 University. 1-1-1 Honjo, Chuo-ku, Kumamoto, 860-8556, Japan.

13 Phone: +81-96-373-5175, Fax: +81-96-362-3256, E-mail: matsuzawa-y@kumamoto-u.ac.jp

14

15 **Acknowledgements:** We thank Mayu Aoki and Ryuta Shirahama at Yokohama City University
16 Medical Center and Kei Nakashima at Kumamoto University Hospital for data management.

17

18 **Data availability statement:** The data produced and analysed in this study are available from
19 the corresponding author upon reasonable request.

20 **Study Setting:** Yokohama City University Medical Center and Kumamoto University Hospital.

1 **Abstract**

2 **Background:** Gut function is vital for human health, and defecation frequency can serve as a
3 fundamental marker including various abnormal patterns. However, the link between a
4 defecation pattern and future adverse events in patients with acute coronary syndrome (ACS)
5 remains uncertain. The aim of this study was to investigate the association between defecation
6 patterns during hospitalization and future cardiovascular events in patients with ACS.

7 **Methods:** This two-center retrospective observational cohort study included 1949 patients
8 hospitalized for ACS between 2012 and 2019. For a comprehensive assessment of defecation in
9 a general ward, we examined three indicators: “frequency of non-defecation days,” “consecutive
10 non-defecation days,” and “maximum daily defecation frequency,” in addition to “average daily
11 defecation frequency”. Patients were divided according to Youden index-derived cutoff values of
12 each defecation frequency indicators. The primary outcome was a composite of all-cause
13 mortality, myocardial infarction, ischemic stroke, and hemorrhagic stroke.

14 **Results:** During the follow-up period (median, 48 months; IQR 30–74 months), 405 of 1949
15 (20.8%) patients developed the primary outcome. In total, 229 patients died (96 cardiovascular
16 deaths and 133 non-cardiovascular deaths), and there were 142, 57, 28, and 113 patients with
17 non-fatal myocardial infarction, nonfatal ischemic stroke, nonfatal hemorrhagic stroke, and
18 hospitalized due to heart failure, respectively. High “frequency of non-defecation days”
19 ($\geq 33.5\%$) (hazard ratio [HR], 1.507; 95% confidence interval [95% CI], 1.191–1.907; $P=0.0006$)
20 and high “maximum daily defecations frequency” (≥ 5 times in a single day) (HR, 1.670; 95% CI,
21 1.203–2.317; $P=0.002$) were associated with an increased risk of future cardiovascular events in
22 the multivariate models. High “frequency of non-defecation days” and high “maximum daily
23 defecations frequency” exhibit distinct characteristics: the former was associated with long-term

1 cardiovascular mortality, all-cause mortality, myocardial infarction, and cerebral hemorrhage,
2 while the latter was linked to cancer-related mortality, non-cardiovascular mortality, cerebral
3 infarction, and heart failure.

4 **Conclusions:** Among patients with ACS who survived to discharge, abnormal defecation
5 patterns as assessed by increased frequency of non-defecation days and high-frequency
6 defecations within a single day, were independently associated with future cardiovascular events.

7 **Clinical Perspective**

8 **What Is New?**

- 9 • This is the first study to investigate defecation patterns during the acute phase in patients
10 with ACS and utilize reliable records of defecation during hospitalization rather than
11 relying on survey-based assessments.
- 12 • In patients with ACS, both increased frequency of non-defecation days and high-
13 frequency defecations within a single day were independently associated with an
14 increased risk of future cardiovascular events, controlling for various confounding factors
15 including age, severity of ACS, medications, and dietary intake.

16 **What Are the Clinical Implications?**

- 17 • Abnormal defecation patterns, such as frequent non-defecation days and high-frequency
18 defecations within a single day, serve as indicators of "gut frailty."
- 19 • The presence of these abnormal defecation patterns may suggest a residual risk in
20 patients post-ACS. Additional research is essential to explore the underlying mechanisms
21 and potential therapeutic interventions.

22 **Key words:** acute coronary syndrome, residual risk, defecation, gut frailty, coronary artery
23 disease

1 **Abbreviations**

2

3 ACS acute coronary syndrome

4 CI confidence interval

5 HR hazard ratio

6 MACE major adverse cardiovascular events

7 NSTEMI non-ST elevation myocardial infarction

8 STEMI ST-elevation myocardial infarction

1 **Introduction**

2

3 Patients who survive acute coronary syndrome (ACS) are at a significantly elevated risk of
4 recurrent ACS, stroke, cardiovascular mortality, and overall mortality, despite the
5 implementation of secondary prevention measures.¹

6 The statement "all disease begins in the gut," attributed to the ancient Greek physician
7 Hippocrates nearly 2500 years ago, has gained renewed relevance recently. The risk of
8 cardiovascular events increases during straining in patients with constipation,² but the gut plays a
9 much more significant role in various aspects. Abnormal gut function may potentially contribute
10 to cardiovascular diseases through mechanisms, including gut microbial dysbiosis, impairment of
11 intestinal barrier function (commonly referred to as "Leaky gut syndrome"), systemic
12 inflammation, autonomic nervous system dysregulation, and reduced secretion of
13 cardioprotective incretins, such as glucagon-like peptide-1 and glucose-dependent insulinotropic
14 polypeptide.³⁻⁵

15 Previous studies have reported an association between chronic constipation and
16 cardiovascular mortality as well as non-fatal cardiovascular events.⁶⁻⁸ During acute illness, many
17 factors, including sympathetic nervous system activation, systemic inflammatory response,
18 reduced physical activity, and medication usage, can collectively influence gut function. Physical
19 frailty during hospitalization for acute myocardial infarction and subsequent hospital-acquired
20 disability can have a long-term adverse impact on prognosis.⁹ Nevertheless, the relationship
21 between defecation frequency during acute illness and subsequent cardiovascular events remains
22 unexplored. Furthermore, there is no established quantitative method for assessing defecation
23 frequency during hospitalization. There can be several patterns of abnormal defecation, such as

1 an increased number of non-defecation days (i.e., defecation every other day), consecutive non-
2 defecation days, and high-frequency defecations within a single day. Therefore, we assessed the
3 defecation patterns using three indicators: “frequency of non-defecation days,” “consecutive
4 non-defecation days,” and “maximum daily defecation frequency,” in addition to “average daily
5 defecation frequency” which is used in the definition of chronic constipation.

6 We hypothesized that defecation frequency, an indicator of “gut frailty,”¹⁰ is a residual
7 risk factor in patients with ACS. Our primary aim was to examine the relationship between
8 defecation frequency during a general ward stay after intensive care and the occurrence of future
9 cardiovascular events in patients with ACS.

1 **Methods**

2

3 *Study design and population*

4 We conducted a retrospective, observational cohort study and enrolled consecutive patients with
5 ACS who were admitted to Yokohama City University Medical Center and Kumamoto
6 University Hospital, from January 1 2012, to December 31 2019. The inclusion criteria were age
7 ≥ 18 years at enrollment, ACS diagnosis (unstable angina, non-ST elevation myocardial
8 infarction [NSTEMI], or ST-elevation myocardial infarction [STEMI]) according to the Japanese
9 guideline.¹¹ The exclusion criteria were in-hospital death and discharge from hospitals with
10 general wards stay ≤ 2 days, because it was difficult to evaluate defecation frequency. Clinical
11 information was obtained from medical records.

12 This study was conducted in accordance with the guidelines of the Institutional Ethics
13 Committees of two hospitals, which provided the ethical approvals (approval number 2766), and
14 with the Declaration of Helsinki. Written informed consent was waived due to retrospective
15 anonymized data collection. All patients enrolled had the opportunity to opt out through
16 information posted on the webpages of both hospitals.

17 *Defecation frequency*

18 Defecation data were collected from nursing records of individual patients. A defecation
19 frequency of less than three times per week is commonly used to define chronic constipation.
20 This criterion, however, cannot accurately assess an irregular defecation pattern, which includes
21 both days with no defecation and days with frequent defecation. Thus, in addition to “average
22 daily defecation frequency”, we comprehensively evaluated the following abnormal defecation
23 patterns: (1) high frequency of days without defecation, (2) consecutive days without defecation,

1 and (3) high-frequency defecation within a single day. Thus, we defined three indicators:
2 “frequency of non-defecation days,” “consecutive non-defecation days,” and “maximum daily
3 defecation frequency.” Days spent in the intensive care unit or high care unit were excluded from
4 the calculation of defecation frequency. The “frequency of non-defecation days” was calculated
5 as a ratio of days without defecation to the total days in a general ward. The examples of
6 assessments for the indicators of defecation frequency can be found in **Figure S1**.

7 *Follow-up and definitions of adverse events*

8 All patients were followed up for mortality, myocardial infarction, stroke, and heart failure
9 hospitalization by reviewing their medical records and conducting phone calls with them or their
10 families between January and August 2023. We also evaluated cause-specific mortality
11 (cardiovascular, non-cardiovascular, and cancer mortality). The primary outcome was extended
12 major adverse cardiovascular events (MACEs); a composite of the first occurrence of all-cause
13 mortality, non-fatal myocardial infarction, non-fatal ischemic stroke, and non-fatal hemorrhagic
14 stroke. The 3-point MACEs was a composite of cardiovascular mortality, non-fatal myocardial
15 infarction, and non-fatal ischemic stroke.

16 *Statistical analyses*

17 Statistical analyses were performed using JMP version 17.1.0 (SAS Institute Inc., Cary, NC).
18 Variables are presented as a means \pm standard deviations, medians (25th to 75th percentile), or
19 numbers (%). Comparisons between the groups were performed using t-tests for parametric data
20 and Wilcoxon test for non-parametric data. Categorical data were compared using Fisher’s exact
21 test. Spearman’s correlation analysis was used to analyze the correlations between the indices.
22 Receiver operating characteristic curve analysis was performed to evaluate the predictive ability
23 of the four indicators of defecation frequency for primary outcomes. The cutoff values were

1 determined using the maximum Youden's index for the primary outcome. The Kaplan–Meier
2 method was used for prognostic analysis, and the log-rank test was used to determine the
3 significance of differences. Univariate and multivariate Cox regression analyses were used to
4 assess independent prognostic capabilities. Age, sex, diabetes, prior myocardial infarction,
5 chronic hemodialysis, diagnostic category of ACS, multivessel disease, Killip class, left
6 ventricular ejection fraction, intra-aortic balloon pumping, coronary artery bypass grafting,
7 venoarterial extracorporeal membrane oxygenation, β -blocker, calcium channel blocker, laxative,
8 intestinal regulator, length of hospital stays, and food intake were used for adjustments in the
9 multivariate Cox regression analyses and for conducting subgroup analyses. All statistical tests
10 were two-sided, and statistical significance was set at $P<0.05$.

11

12

1 **Results**

2

3 In total, 2119 patients were initially enrolled. **Figure S2** shows the patient enrollment process.

4 After excluding patients with in-hospital deaths (n=93) and those with ≤ 2 days of general ward

5 stay (n=77), 1949 patients remained (sex, 80.5% male; mean age, 67 years). The median

6 (interquartile range [IQR]) length of stay in general wards was 12 (8–16) days, and the median

7 (IQR) values for the four defecation indicators were 0.80 (0.57–1.11) times/day for the “average

8 daily defecation frequency”, 33.3 (17.1–50.5) % for the “frequency of non-defecation days,” 2

9 (1–3) days for the “consecutive non-defecation days,” and 2 (1–3) times for the “maximum daily

10 defecation frequency” (**Figure S3**). The cut-off values of four indicators of defecation for

11 predicting the primary outcomes were 0.69 for the “average daily defecation frequency”, 33.5%

12 for the “frequency of non-defecation days,” 6 days for the “consecutive non-defecation days,”

13 and five times for the “maximum daily defecation frequency” (**Figure S4**).

14 *Clinical events during the follow-up*

15 During the follow-up period (median, 48 months; interquartile range 30–74 months), 405 of

16 1949 (20.8%) patients developed the primary outcome. In total, 229 patients died (96

17 cardiovascular deaths and 133 non-cardiovascular deaths), and 278 patients experienced 3-point

18 MACE. There were 142, 57, 28, and 113 patients with non-fatal myocardial infarction, nonfatal

19 ischemic stroke, nonfatal hemorrhagic stroke, and hospitalized due to heart failure, respectively.

20 *Defecation frequency and the primary outcome*

21 **Figure S5** illustrates the relationship between each indicator quartile and the primary outcome.

22 **Figure 1** shows the univariate cumulative event rate analyses (Kaplan–Meier) and log-rank tests

23 utilizing the cutoff values of the four defecation indicators, illustrating their association with the

1 primary outcome. Notably, high “frequency of non-defecation days” was associated with events
2 throughout the observation period, whereas high “maximum daily defecation frequency”
3 suggested a particularly strong association with early events. The multivariate Cox hazard
4 analysis in **Table 1** shows that high “frequency of non-defecation days” (adjusted hazard ratio
5 [HR], 1.507; 95% confidence interval [CI], 1.191–1.907; $P=0.0006$) and high “maximum daily
6 defecations frequency” (adjusted HR, 1.670; 95% CI, 1.203–2.317; $P=0.002$) have independent
7 relationships with the primary outcome. Conversely, “consecutive non-defecation days” were not
8 significantly associated with the events. When patients are divided into four groups using the
9 cut-off values for “frequency of non-defecation days” and “maximum daily defecations
10 frequency,” it becomes evident that risk stratification is possible from the early stages to the long
11 term (**Figure 2**).

12 *Patients’ characteristics*

13 The baseline patients’ demographics and clinical characteristics according to the “frequency of
14 non-defecation days” and the “maximum daily defecations frequency” are listed in **Tables S1**
15 **and S2**. The high “frequency of non-defecation days” group had fewer cases of diabetes and
16 STEMI compared to the low “frequency of non-defecation days” group. Additionally, the former
17 group had more dialysis patients, a lower food intake, and shorter hospital stays. There was a
18 modest negative correlation between the “frequency of non-defecation days” and the “maximum
19 daily defecations frequency” (Spearman’s $\rho=-0.33$, $P<0.0001$) and the prevalence of high
20 “maximum daily defecations frequency” was significantly lower in the group with high
21 “frequency of non-defecation days” (**Table S1**). The high “maximum daily defecations
22 frequency” group was characterized by older age, poorer kidney and heart function, and a higher
23 proportion of severe cases requiring coronary artery bypass grafting, intra-aortic balloon

1 pumping, or venoarterial extracorporeal membrane oxygenation compared to the low “maximum
2 daily defecations frequency” group (**Table S2**).

3 *Subgroup analysis*

4 The subgroup analyses are shown in **Figures S6 and S7**. The higher risks in the high “frequency
5 of non-defecation days” and high “maximum daily defecations frequency” groups for the
6 primary outcome seemed to be consistent across all the subgroups.

7 *Details of clinical events*

8 A high “frequency of non-defecation days” was significantly associated with 3-point MACE, all-
9 cause death, cardiovascular death, non-cardiovascular death, non-fatal myocardial infarction, and
10 hemorrhagic stroke (**Table 2**). The occurrence of ischemic stroke was numerically higher in the
11 high than in the low “frequency of non-defecation days” group. Conversely, the high “maximum
12 daily defecations frequency” group was significantly associated with 3-point MACE, non-
13 cardiovascular death, cancer death, ischemic stroke, and heart failure hospitalization (**Table 3**).

14 The high “frequency of non-defecation days” and high “maximum daily defecations
15 frequency” groups exhibited differences in the breakdown of associated events and variations in
16 timing, spanning both early and long-term outcomes. Consequently, a defecation pattern
17 characterized by infrequent defecations on certain days but high-frequency defecations on other
18 days was prognostically unfavorable (**Figure 2**).

19

20

21

1 Discussion

2
3 **Figure 3** illustrates the summary of this study. High “frequency of non-defecation days” and
4 high “maximum daily defecations frequency” during their general wards stay were associated
5 with a heightened risk of future cardiovascular events. These associations remained significant
6 even after adjusting for factors, such as clinical presentation and severity of ACS, age, sex,
7 dietary intake, length of hospital stay, and laxative use. These two indicators exhibit distinct
8 characteristics; a high “frequency of non-defecation days” is associated with the occurrence of
9 cardiovascular mortality, all-cause mortality, myocardial infarction, and cerebral hemorrhage
10 over an extended period. Conversely, a high “maximum daily defecation frequency” is linked to
11 cancer-related mortality, non-cardiovascular mortality, cerebral infarction, and heart failure,
12 especially in the early phase. To our knowledge, this study is the first to report the defecation
13 frequency during the acute phase in patients with ACS and utilize reliable records of defecation
14 during hospitalization rather than relying on survey-based assessments.

15 The observed association between high frequency of in-hospital non-defecation days and
16 subsequent cardiovascular events in patients with ACS in this study aligns with prior research
17 findings indicating that “chronic constipation is linked to an adverse cardiovascular prognosis.”⁶⁻

18 ⁸ One notable difference between previous studies and this study is the result of heart failure
19 outcome. Previously,⁶ a significant association between constipation and heart failure was
20 reported. However, in this study, no significant relationship was observed between the high
21 “frequency of non-defecation days” and heart failure events. In the present study population,
22 advanced age, female sex, Killip class ≥ 2 , and reduced left ventricular ejection fraction were
23 identified as factors associated with heart failure events (data not shown). However, when

1 comparing the high and low “frequency of non-defecation days” groups, age, sex, and Killip
2 class were similar, while the left ventricular ejection fraction was unexpectedly higher. Patients’
3 backgrounds may have introduced confounding factors that hindered the detection of an apparent
4 association between a low defecation frequency and heart failure events. Conversely, high
5 “maximum daily defecations frequency” was initially associated with heart failure events, but
6 upon adjustment for the aforementioned factors, this relationship lost its statistical significance
7 (data not shown). Hence, further research and analysis are imperative to achieve a more thorough
8 understanding of the potential link between defecation frequency and heart failure events, while
9 meticulously considering these potential confounding factors.

10 The high “frequency of non-defecation days” group had a higher proportion of patients
11 who had previously experienced myocardial infarction or developed renal failure requiring
12 chronic dialysis. By including ACS events for the inclusion of this study, it can be inferred that
13 patients with impaired gut function had a higher frequency of recurrent cardiovascular events.
14 These results suggest a potential association between decreased gut function and cardiovascular
15 diseases. Furthermore, the high “frequency of non-defecation days” group exhibited a lower
16 proportion of STEMI cases and a higher proportion of NSTEMI cases. Within the current study
17 population, patients with a previous history of myocardial infarction demonstrated a significantly
18 higher incidence of NSTEMI compared to those without (58.3% vs. 34.5%, $P<0.0001$). Similarly,
19 patients undergoing chronic hemodialysis had a significantly higher incidence of NSTEMI than
20 those who did not (78.5% vs. 35.1%; $P<0.0001$), suggesting that the differential frequencies of
21 STEMI and NSTEMI in the two groups stratified by the “frequency of non-defecation days” can
22 be attributed, at least in part, to these factors. Notably, the association between high “frequency
23 of non-defecation days” and unfavorable cardiovascular prognosis remained consistent in the

1 subgroup analyses stratified by STEMI/NSTEMI, prior history of myocardial infarction, and
2 chronic hemodialysis.

3 In this study, the association between high “frequency of non-defecation days” and
4 cardiovascular events remained independent of various confounders. Consequently, while acute
5 stress, impaired cardiac function, and renal dysfunction may contribute to decreased defecation
6 frequency, it is suggested that the increased “frequency of non-defecation days” may also be
7 linked to cardiovascular events through distinct mechanisms. In patients with severe ACS,
8 characterized by cardiac dysfunction, renal impairment, heart failure, and those requiring
9 treatments, such as coronary artery bypass grafting or mechanical circulatory support, a
10 reduction in defecation frequency was not observed; rather, a higher “maximum daily
11 defecations frequency” was noted. This observation may be associated with the higher incidence
12 of early events in the high “maximum daily defecation frequency” group in this work. The two
13 indicators used to evaluate the defecation frequency may reflect different aspects of patient
14 prognosis. There was a small group of patients (n=75, 3.9%) whose overall hospitalization period
15 had a low number of days with defecation, but who exhibited a high maximum daily defecation
16 frequency on specific days. The patients in this group had the worst prognoses, which cannot be
17 detected by the “average daily defecation frequency”.

18 As this study focused on the period when patients were hospitalized in general wards,
19 receiving dietary intake, and undergoing rehabilitation, the defecation frequency during this
20 timeframe can be considered indicative of gut function. Notably, the high “frequency of non-
21 defecation days” displayed a robust association with cardiovascular mortality and myocardial
22 infarction. A long gut transit time has been reported to be associated with gut microbial diversity,
23 composition, and metabolism, leading to chronic inflammatory responses that may elevate the

1 risk of cardiovascular diseases.¹²⁻¹⁶ Conversely, certain types of gut microbial dysbiosis can
2 dampen gut motility, establishing a bidirectional relationship between the gut microbiota and gut
3 transit time.¹⁷ Moreover, other types of gut function abnormalities, such as irritable bowel
4 syndrome, also influence nutrient absorption and gut microbiota.¹⁸ Nonetheless, the association
5 between cardiovascular events and defecation frequency remains under investigation, and the
6 precise mechanisms and causal relationships remain unclear. Investigations into why a high
7 “maximum daily defecations frequency” during acute illness is associated with subsequent
8 cardiovascular events have not been conducted. Additionally, this study was retrospective in
9 nature, with a focus solely on defecation frequency for assessment and analysis. Precise
10 examinations of the gut transit time using methods, such as radio-opaque markers, scintigraphy
11 with radioactive isotopes, and wireless capsule techniques for measuring intraluminal pressure,
12 temperature, and pH, have not been performed. Nevertheless, the study was simple and non-
13 invasive, allowing evaluation in a wide range of individuals. In contrast to previous studies that
14 relied on questionnaire surveys, the data on defecation frequency were meticulously recorded by
15 nurses during hospitalization, ensuring high reliability. Our findings may reflect an aspect within
16 the broader pathological concept of impaired gut function, which could be described as “gut
17 frailty.” However, the evaluation of gut function was not conducted precisely, and variables,
18 such as gut microbiota, metabolites originating from the gut microbiota, leaky gut syndrome, and
19 incretin secretion, were not assessed. Therefore, the specific mechanisms underlying these results
20 remain unclear. Although numerous reports and research advancements have explored the
21 relationship between physical frailty and cardiovascular diseases, limited research has focused on
22 the connection between gut function and cardiovascular diseases. Further investigations are
23 necessary to determine whether interventions aimed at improving gut function, such as increased

1 dietary fiber intake, judicious use of laxatives, or adoption of moderate exercise routines, can
2 enhance cardiovascular prognosis.

3 ***Limitations***

4 This study was a retrospective, observational, two-center investigation; thus, it has inherent
5 limitations, including a relatively small sample size and the inability to establish causality. Given
6 the absence of data on defecation frequency before and after hospitalization, it remains uncertain
7 whether the observed indicators of defecation frequency are solely acute-phase phenomena or
8 chronic conditions. Nevertheless, the Kaplan–Meier curves suggest that a higher frequency of
9 non-defecation days during hospitalization may be linked to long-term event occurrence. Only
10 defecation frequency was available, and assessments of stool characteristics using tools, such as
11 the Bristol Stool Chart, were not conducted. Furthermore, this study included only Japanese
12 patients with ACS; therefore, the findings cannot be directly extrapolated to other populations.

13 **Conclusions**

14 Among patients discharged after hospitalization for ACS, high “frequency of non-defecation
15 days” and high “maximum daily defecations frequency” during general wards stay were
16 associated with an increased risk of future cardiovascular events. When defecation occurs on ≤ 2
17 out of 3 days, the long-term risk of future cardiovascular events increases by approximately 50%.
18 Conversely, when there was a day with five or more defecations, the risk of early events was
19 heightened. Further research is required to gain a deeper understanding of the underlying
20 mechanisms. These additional investigations will yield valuable insights into the association
21 between defecation frequency and cardiovascular events.

22

1 **Clinical Perspectives**

2

3 **COMPETENCY IN PATIENT CARE AND PROCEDURAL SKILLS:** In patients with

4 acute coronary syndrome, abnormal defecation patterns during general wards stay are associated

5 with major adverse events after discharge.

6 **TRANSLATIONAL OUTLOOK:** Further research is needed to explore the mechanisms and

7 potential therapeutic interventions.

1 **References**

2

3 1. Stone GW, Maehara A, Lansky AJ, et al. A prospective natural-history study of coronary
4 atherosclerosis. *N Engl J Med* 2011;364(3):226-35.

5 2. Sikirov BA. Cardio-vascular events at defecation: are they unavoidable? *Med Hypotheses*
6 1990;32(3):231-3.

7 3. Tang WH, Kitai T, Hazen SL. Gut Microbiota in Cardiovascular Health and Disease.
8 *Circ Res* 2017;120(7):1183-1196.

9 4. Kinashi Y, Hase K. Partners in Leaky Gut Syndrome: Intestinal Dysbiosis and
10 Autoimmunity. *Front Immunol* 2021;12:673708.

11 5. Matsuzawa Y, Nakahashi H, Konishi M, et al. Microbiota-derived Trimethylamine N-
12 oxide Predicts Cardiovascular Risk After STEMI. *Sci Rep* 2019;9(1):11647.

13 6. Sundboll J, Szepligeti SK, Adelborg K, Szentkuti P, Gregersen H, Sorensen HT.
14 Constipation and risk of cardiovascular diseases: a Danish population-based matched cohort
15 study. *BMJ Open* 2020;10(9):e037080.

16 7. Sumida K, Molnar MZ, Potukuchi PK, et al. Constipation and risk of death and
17 cardiovascular events. *Atherosclerosis* 2019;281:114-120.

18 8. Salmoirago-Blotcher E, Crawford S, Jackson E, Ockene J, Ockene I. Constipation and
19 risk of cardiovascular disease among postmenopausal women. *Am J Med* 2011;124(8):714-23.

20 9. Matsuzawa Y, Konishi M, Akiyama E, et al. Association between gait speed as a measure
21 of frailty and risk of cardiovascular events after myocardial infarction. *J Am Coll Cardiol*
22 2013;61(19):1964-72.

23 10. Naito Y. Gut Frailty: Its Concept and Pathogenesis. *Digestion*. 2023;15:1-9.

- 1 11. Kimura K, Kimura T, Ishihara M, et al. JCS 2018 Guideline on Diagnosis and Treatment
2 of Acute Coronary Syndrome. *Circ J* 2019;83(5):1085-1196.
- 3 12. Vandeputte D, Falony G, Vieira-Silva S, Tito RY, Joossens M, Raes J. Stool consistency
4 is strongly associated with gut microbiota richness and composition, enterotypes and bacterial
5 growth rates. *Gut* 2016;65(1):57-62.
- 6 13. Roager HM, Hansen LB, Bahl MI, et al. Colonic transit time is related to bacterial
7 metabolism and mucosal turnover in the gut. *Nat Microbiol* 2016;1(9):16093.
- 8 14. Muller M, Hermes GDA, Canfora EE, et al. Distal colonic transit is linked to gut
9 microbiota diversity and microbial fermentation in humans with slow colonic transit. *Am J*
10 *Physiol Gastrointest Liver Physiol* 2020;318(2):G361-G369.
- 11 15. Asnicar F, Leeming ER, Dimidi E, et al. Blue poo: impact of gut transit time on the gut
12 microbiome using a novel marker. *Gut* 2021;70(9):1665-1674.
- 13 16. Steenackers N, Falony G, Augustijns P, et al. Specific contributions of segmental transit
14 times to gut microbiota composition. *Gut* 2022;71(7):1443-1444.
- 15 17. Prochazkova N, Falony G, Dragsted LO, Licht TR, Raes J, Roager HM. Advancing
16 human gut microbiota research by considering gut transit time. *Gut* 2023;72(1):180-191.
- 17 18. Staudacher HM, Whelan K. Altered gastrointestinal microbiota in irritable bowel
18 syndrome and its modification by diet: probiotics, prebiotics and the low FODMAP diet. *Proc*
19 *Nutr Soc* 2016;75(3):306-18.

1 **Figure legends**

2

3 **Figure 1. Kaplan–Meier curves for the composite primary outcome stratified by the four**
4 **indicators of defecation frequency.**

5 The primary outcome was extended major adverse cardiovascular events (MACEs), which is a
6 composite of the first occurrence of all-cause mortality, nonfatal myocardial infarction, nonfatal
7 ischemic stroke, and nonfatal hemorrhagic stroke. The cut-off values of four indicators of
8 defecation were 0.69 for the “average daily defecation frequency” (A), 33.5% for the “frequency
9 of non-defecation days” (B), 6 days for the “consecutive non-defecation days” (C), and five
10 times for the “maximum daily defecation frequency” (D).

11

12 **Figure 2. Kaplan–Meier curves for the composite primary outcome stratified by the**
13 **“frequency of non-defecation days” and the “maximum daily defecations frequency.”**

14 The cut-off values of two indicators of defecation were 33.5% for the “frequency of non-
15 defecation days,” and 5 times for the “maximum daily defecations frequency.”

16

17 **Figure 3. Summary of the study.**

18 In this study, defecation patterns among patients with acute coronary syndrome (ACS) who
19 survived to discharge were investigated using three indicators: “frequency of non-defecation
20 days,” “consecutive non-defecation days,” and “maximum daily defecation frequency,” in
21 addition to “average daily defecation frequency”. Both increased frequency of non-defecation
22 days and high-frequency defecations within a single day were independently associated with an
23 increased risk of future cardiovascular events, controlling for various confounding factors

- 1 including age, severity of ACS, medications, and dietary intake. Further research is needed to
- 2 explore the mechanisms and potential therapeutic interventions.

Table 1. Defecation status and the primary outcome.

	The primary outcome		P	Crude HR (95% CI)	P	Adjusted HR (95% CI)	P
	Event (-) n=1544	Event (+) n=405					
Average daily defecation frequency							
Median, IQR, %	0.81 (0.59-1.11)	0.78 (0.50-1.11)	0.125	0.999 (0.981-1.019)	0.926 (HR for 0.1 decrease)	1.005 (0.985-1.028)	0.620
1 st quartile	23.8%	30.6%	0.027	1.079 (0.988-1.178)	0.089 (HR for 1 quartile decrease)	1.093 (0.983-1.215)	0.100
2 nd quartile	23.8%	20.5%					
3 rd quartile	27.5%	23.7%					
4 th quartile	25.0%	25.2%					
≤ 0.69	536 (34.7%)	170 (42.0%)	0.008	1.316 (1.080-1.603)	0.007 (HR for ≤ 0.69 vs > 0.69)	1.315 (1.034-1.671)	0.025
Frequency of non-defecation days (%)							
Median, IQR, %	69.2 (50.0-83.3)	62.5 (40.0-62.5)	<0.0001	1.009 (1.006-1.013)	<0.0001 (HR for 1% increase)	1.009 (1.004-1.014)	0.0002
1 st quartile	26.4%	21.0%	0.0003	1.681 (1.304-2.169)	<0.0001 (HR for 1 quartile increase)	1.172 (1.058-1.298)	0.002
2 nd quartile	31.1%	24.2%					
3 rd quartile	14.8%	19.3%					
4 th quartile	28.1%	35.6%					
≥ 33.5 %	662 (42.9%)	222 (54.8%)	<0.0001	1.552 (1.276-1.888)	<0.0001 (HR for ≥ 33.5% vs < 33.5%)	1.507 (1.191-1.907)	0.0006
Consecutive non-defecation days							
Median, IQR, day	2 (1-3)	2 (1-4)	0.976	1.041 (0.997-1.085)	0.070 (HR for 1 day increase)	1.004 (0.948-1.061)	0.877
1 st quartile	33.0%	34.3%	0.717	1.060 (0.975-1.150)	0.170 (HR for 1 quartile increase)	1.015 (0.914-1.127)	0.777
2 nd quartile	25.8%	23.0%					
3 rd quartile	17.0%	17.5%					
4 th quartile	24.3%	25.2%					
≥ 6 days	153 (9.9%)	48 (11.9%)	0.271	1.376 (1.018-1.861)	0.038 (HR for ≥ 6 days vs ≤ 5 days)	1.166 (0.798-1.703)	0.428
Maximum daily defecations frequency (n)							

Median, IQR, n	2 (1-3)	2 (1-3)	0.085	1.083 (1.047-1.117)	<0.0001	1.042 (0.995-1.086)	0.064
					(HR for 1 time increase)		
1 st quartile	34.9%	35.6%	0.0002	1.113 (1.017-1.218)	0.021	1.002 (0.894-1.122)	0.972
2 nd quartile	34.8%	27.7%					
3 rd quartile	17.7%	13.8%					
4 th quartile	14.6%	23.0%					
					(HR for 1 quartile increase)		
≥ 5 / day	142 (9.2%)	72 (17.8%)	<0.0001	1.978 (1.533-2.552)	<0.0001	1.670 (1.203-2.317)	0.002
					(HR for ≥ 5 / day vs ≤ 4 / day)		

1 Abbreviations: CI, confidence interval; HR, hazard ratio; IQR, interquartile range; MACE, major adverse cardiovascular event.

Table 2. Adverse events and univariate Cox hazard analysis based on frequency of days without defecation.

	All n=1949	Frequency of non-defecation days		Crude HR	95% CI	P
		low < 33.5% n=1065	high ≥ 33.5% n=884			
The primary outcome						
Extended MACE (all death, myocardial infarction, ischemic and hemorrhagic stroke)	405 (20.8%)	183 (17.2%)	222 (25.1%)	1.552	(1.276-1.888)	<0.0001
3-point MACE						
(cardiovascular death, myocardial infarction, and ischemic stroke)	278 (14.3%)	123 (11.6%)	155 (17.5%)	1.607	(1.268-2.037)	<0.0001
All death	229 (11.8%)	104 (9.8%)	125 (14.1%)	1.494	(1.151-1.939)	0.003
Cardiovascular death	96 (4.9%)	42 (3.9%)	54 (6.1%)	1.593	(1.064-2.386)	0.024
Non cardiovascular death	133 (6.8%)	62 (5.8%)	71 (8.0%)	1.425	(1.013-2.005)	0.042
Cancer death	63 (3.2%)	34 (3.2%)	29 (3.3%)	1.075	(0.655-1.766)	0.774
Non-fatal myocardial infarction	142 (7.3%)	60 (5.6%)	82 (9.3%)	1.738	(1.245-2.426)	0.001
Non-fatal ischemic stroke	57 (2.9%)	26 (2.4%)	31 (3.5%)	1.510	(0.896-2.543)	0.122
Non-fatal hemorrhagic stroke	28 (1.4%)	8 (0.8%)	20 (2.3%)	3.128	(1.375-7.114)	0.007
Heart failure hospitalization	113 (5.8%)	62 (5.8%)	51 (5.8%)	1.072	(0.740-1.553)	0.713

1 Abbreviations: CI, confidence interval; HR, hazard ratio; MACE, major adverse cardiovascular event.

Table 3. Adverse events and univariate Cox hazard analysis based on maximum daily defecations frequency.

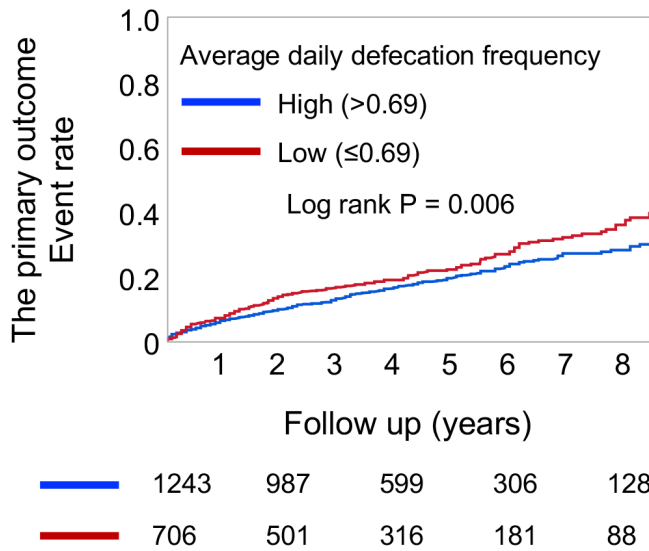
	All n=1949	Maximum daily defecations frequency		Crude HR	95% CI	P
		Low ≤ 4 n=1735	High ≥ 5 n=214			
The primary outcome						
Extended MACE (all death, myocardial infarction, ischemic and hemorrhagic stroke)	405 (20.8%)	333 (19.2%)	72 (33.6%)	1.978	(1.533-2.552)	<0.0001
3-point MACE						
(cardiovascular death, myocardial infarction, and ischemic stroke)	278 (14.3%)	238 (13.7%)	40 (18.7%)	1.526	(1.091-2.134)	0.014
All death	229 (11.8%)	179 (10.3%)	50 (23.4%)	2.521	(1.842-3.451)	<0.0001
Cardiovascular death	96 (4.9%)	82 (4.7%)	14 (6.5%)	1.528	(0.866-2.694)	0.143
Non cardiovascular death	133 (6.8%)	97 (5.6%)	36 (16.8%)	3.363	(2.293-4.931)	<0.0001
Cancer death	63 (3.2%)	49 (2.8%)	14 (6.5%)	2.590	(1.430-4.693)	0.002
Non-fatal myocardial infarction	142 (7.3%)	126 (7.3%)	16 (7.5%)	1.163	(0.691-1.957)	0.570
Non-fatal ischemic stroke	57 (2.9%)	41 (2.4%)	16 (7.5%)	3.455	(1.938-6.160)	<0.0001
Non-fatal hemorrhagic stroke	28 (1.4%)	24 (1.4%)	4 (1.9%)	1.471	(0.510-4.244)	0.475
Heart failure hospitalization	113 (5.8%)	94 (5.4%)	19 (8.9%)	1.810	(1.105-2.965)	0.018

1 Abbreviations: CI, confidence interval; HR, hazard ratio; MACE, major adverse cardiovascular event.

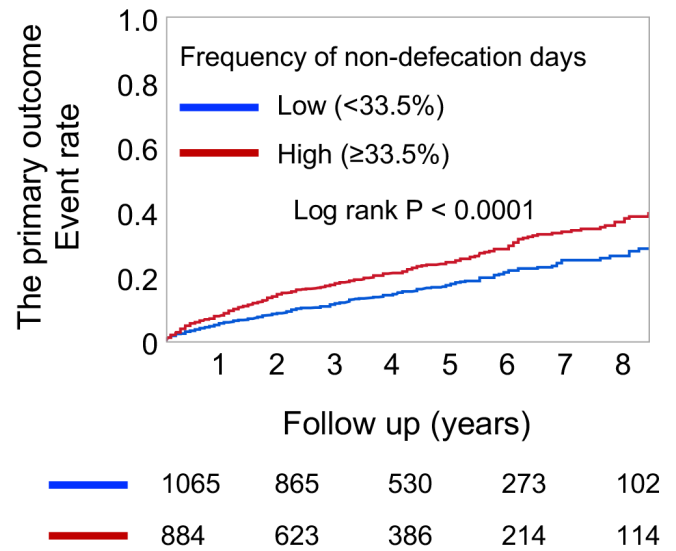
2

Figure 1

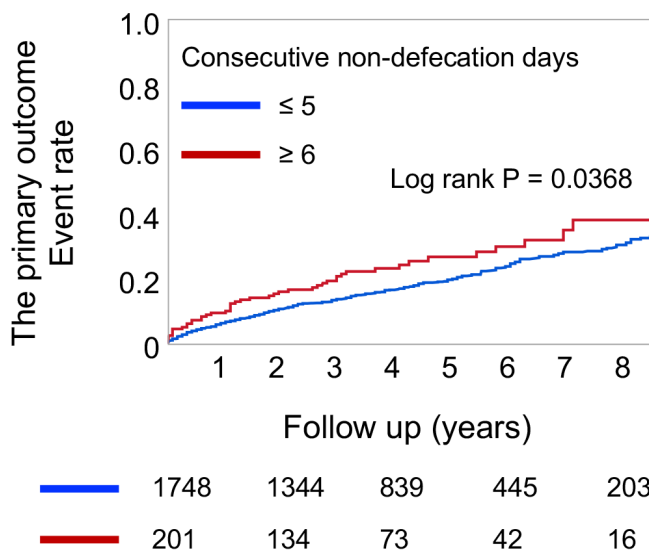
(A) Average daily defecation frequency



(B) Frequency of non-defecation days (%)



(C) Consecutive non-defecation days



(D) Maximum daily defecations frequency

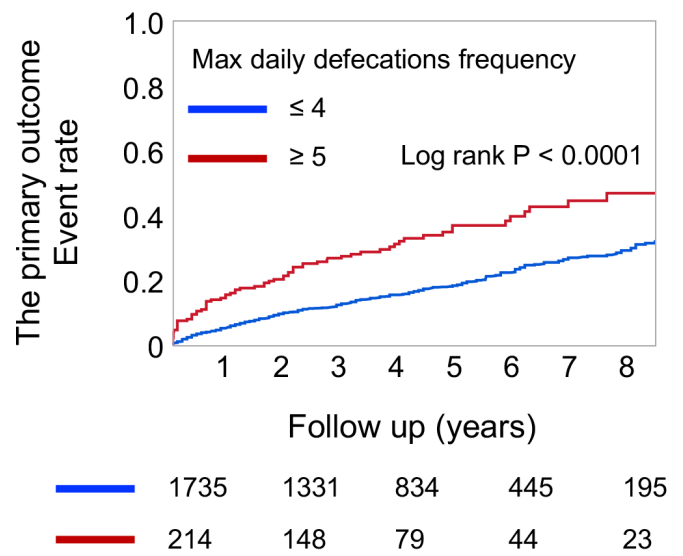
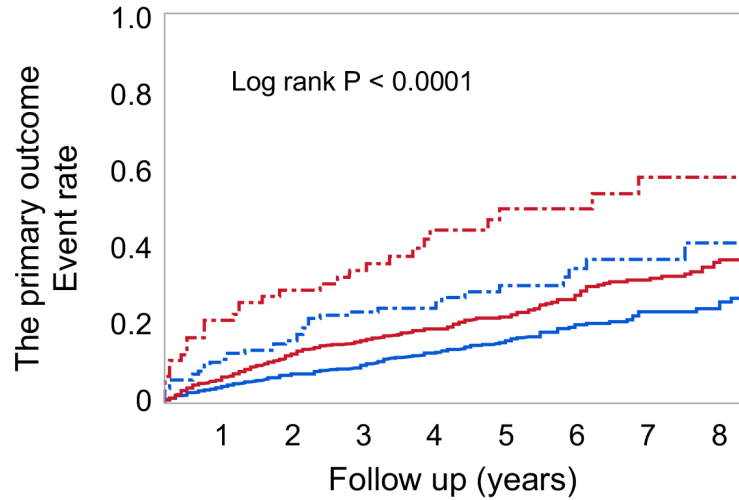


Figure 2

4 categories according to frequency of non-defecation days & maximum daily defecations

- High frequency of non-defecation days & maximum daily defecations ≥ 5
- Low frequency of non-defecation days & maximum daily defecations ≥ 5
- High frequency of non-defecation days & maximum daily defecations ≤ 4
- Low frequency of non-defecation days & maximum daily defecations ≤ 4



---	75	46	24	14	9
---	139	103	55	31	14
—	809	577	362	201	106
—	926	762	476	244	89

