

1 **Reward circuit function and treatment outcome following vALIC deep brain**
2 **stimulation in treatment-resistant depression**
3

4 N. Runia^{*,a,b,t}, MSc, L.A. van de Mortel^{*,a,b,t}, MSc, C. L. C. Smith^{c,d}, MSc, I.O. Bergfeld^{a,b}, PhD, B.P. de
5 Kwaasteniet^e, PhD, J. Luigjes^{a,b}, PhD, J. van Laarhoven^f, MD, P. Notten^f, MD, G. Beute^g, MD, dr. P. van
6 den Munckhof^h, MD, P.R. Schuurman^h, PhD, MD, D.A.J.P. Denys^{a,b}, PhD, MD, G.A. van Wingen^{a,b,t}, PhD

7 *These authors contributed equally to this manuscript.

8

9 ^a Amsterdam UMC location University of Amsterdam, Department of Psychiatry, Meibergdreef 9,
10 Amsterdam, The Netherlands

11 ^b Amsterdam Neuroscience, Amsterdam, The Netherlands

12 ^c Amsterdam UMC location Vrije Universiteit Amsterdam, Department of Radiology and Nuclear
13 Medicine, Boelelaan 1117, Amsterdam, The Netherlands

14 ^d Cancer Center Amsterdam, Imaging and Biomarkers, Amsterdam, The Netherlands

15 ^e Martini Hospital, Department of Radiology and Nuclear Medicine, Groningen, the Netherlands

16 ^f Department of Psychiatry, ETZ, location Elisabeth, Tilburg, The Netherlands

17 ^g Department of Neurosurgery, ETZ, location Elisabeth, Tilburg, The Netherlands

18 ^h Amsterdam UMC location University of Amsterdam, Department of Neurosurgery, Amsterdam, the
19 Netherlands

20

21 [†]Corresponding authors at: Amsterdam UMC location University of Amsterdam, Department of
22 Psychiatry, Meibergdreef 9, 1105 AZ, Amsterdam, the Netherlands

23 E-mail: n.runia@amsterdamumc.nl; l.a.vandemortel@amsterdamumc.nl

24 g.a.vanwingen@amsterdamumc.nl

25 Telephone: +31208913674

26 **Abstract**

27
28 Depression is associated with abnormal functioning of the reward circuit. Several deep brain
29 stimulation (DBS) targets for treatment-resistant depression (TRD) directly modulate white matter
30 bundles of the reward circuit. Here we investigated whether baseline reward processing in the brain
31 is associated with ventral anterior limb of the internal capsule (vALIC) DBS outcome and whether
32 vALIC DBS changes neural activity in the reward circuit.

33 We studied fifteen patients with TRD who performed a monetary reward task during functional
34 magnetic resonance imaging (fMRI) before vALIC DBS surgery, after DBS parameter optimization, and
35 during a sham-controlled crossover phase. DBS devices were switched off during scanning for MRI
36 safety reasons. Additionally, fifteen matched healthy controls were investigated twice to account for
37 test-retest effects. We investigated brain responses to reward anticipation, loss anticipation, reward
38 feedback and loss feedback.

39 Results showed that lower baseline nucleus accumbens activation during loss anticipation and higher
40 baseline caudate nucleus and midcingulate cortex activation during reward feedback processing
41 were associated with worse DBS outcome. No significant changes in reward processing were
42 observed following vALIC DBS in comparison to healthy controls or after active compared to sham
43 stimulation. Instead, increased middle frontal gyrus responses following DBS to loss feedback was
44 associated with better DBS outcome.

45 These results suggest that DBS efficacy in TRD is related to individual differences in reward circuit
46 functioning at baseline and to changes in middle frontal gyrus responses following DBS.

47 **1. Introduction**

48

49 Treatment-resistant depression (TRD) is commonly defined as a major depressive disorder (MDD) for
50 which two or more prior treatments have failed to achieve clinical response (1). Patients with TRD
51 who do not sufficiently respond to any of the conventional treatment options for MDD, may benefit
52 from deep brain stimulation (DBS). While still in an experimental phase, DBS for severe TRD has
53 proved to be a successful treatment, with on average 40% of patients achieving clinical response
54 within one year (2). Common DBS targets for the treatment of TRD include the subcallosal cingulate
55 cortex, ventral anterior limb of the internal capsule (vALIC), and medial forebrain bundle (MFB), of
56 which the latter two are involved in the reward circuit (3-5). Dysfunction of the reward circuit and
57 aberrations in its associated fiber bundles have previously been indicated as a possible cause for the
58 pathological anhedonic states in depressive disorders (6-8). While not much is known about the
59 therapeutic mechanism of vALIC DBS, prolonged stimulation of the vALIC could induce biological
60 changes to its surrounding limbic regions within reward- and affective circuits (9-12).

61 Within these circuits, the nucleus accumbens (NAc) is one of the regions that can either
62 directly be stimulated with DBS through the volume of activated tissue (13) or indirectly through
63 connections with the vALIC (14), and could be contributing to the therapeutic changes induced by
64 vALIC DBS. Previous studies have shown that the NAc is a key region in the brain reward circuit (15)
65 and shows abnormal functioning in MDD (16-18). By probing the activity of the NAc during reward
66 anticipation, we have previously shown that NAc reward processing normalizes following vALIC DBS
67 in obsessive-compulsive disorder (9). We therefore hypothesize that such normalization of NAc
68 activity during reward anticipation following vALIC DBS would occur in TRD as well. However,
69 whether such normalization in reward anticipation or other measures of reward function occurs in
70 the NAc, and to what extent this also affects other regions related to reward processing has not been
71 investigated previously. Additionally, it is unknown whether baseline reward circuit functioning holds
72 predictive information about future DBS treatment outcome.

73 In this longitudinal functional magnetic imaging (fMRI) study, we investigated reward
74 processing in TRD patients receiving vALIC DBS treatment. Patients underwent fMRI scanning while
75 performing a monetary reward task known to activate the NAc (19-21) before DBS implantation and
76 following surgery and DBS parameter optimization. Matched healthy controls were included and
77 performed the fMRI task at two time points to control for test-retest effects. To assess short-term
78 effects of DBS de-activation after parameter optimization on reward processing, TRD patients also
79 performed the fMRI task after double-blind periods of active and sham stimulation. We investigated
80 the predictive properties of baseline NAc and whole-brain reward processing for DBS treatment
81 response, and assessed longitudinal and active stimulation effects of DBS on reward processing.
82 Additionally, we investigated whether NAc and whole-brain longitudinal changes in reward
83 processing were related to clinical outcome.

84

85 **2. Methods**

86 *2.1 Patients*

87 We included patients with TRD as well as healthy controls in a longitudinal study followed by a
88 randomized crossover phase (for patients only). This imaging study was an add-on to a previously
89 reported clinical trial for vALIC DBS in TRD (13) (trial registration number: [NTR2118](#)). The study was
90 approved by the medical ethics boards of the two participating hospitals: Academic Medical Center,
91 Amsterdam [AMC] and St Elisabeth Hospital, Tilburg [SEH]. All included patients provided written
92 informed consent.

93 At inclusion, patients had to be aged 18-65 years and have a primary diagnosis of MDD
94 according to the DSM-IV (assessed with a semi-structured clinical interview for DSM-IV disorders), an
95 illness duration of more than 2 years, a 17-item Hamilton Depression Rating Scale (HAM-D-17) score
96 of 18 or higher, and a Global Assessment of Function score of 45 or lower. Additionally, patients had
97 to be treatment-resistant, defined as a failure of at least two different classes of second-generation
98 antidepressants, one trial of a tricyclic antidepressant, one trial of a tricyclic antidepressant with
99 lithium augmentation, one trial of a monoamine oxidase inhibitor, and six or more sessions of

100 bilateral electroconvulsive therapy. Patients who fulfilled the above criteria and remained stable with
101 maintenance electroconvulsive therapy, but relapsed after discontinuation of that therapy, were also
102 eligible. Patients had to be able to understand the consequences of the procedure (IQ >80), and
103 capable of making choices without coercion. Exclusion criteria were a diagnosis of Parkinson's
104 disease, dementia, epilepsy, bipolar disorder, schizophrenia or history of psychosis unrelated to
105 MDD, antisocial personality disorder, current tic disorder, an organic cause of depression, substance
106 abuse during the past 6 months, unstable physical condition, pregnancy, or general contraindications
107 for surgery.

108 Healthy controls were matched by age, sex, and education level. Their lifetime history of
109 psychiatric illness and that of their first-degree relatives were negative.

110

111 *2.2 Treatment*

112 Four-contact leads were implanted bilaterally and connected to a neurostimulator (lead: 3389;
113 stimulator: Activa PC/RC, Medtronic, Minneapolis, MN, USA). The electrodes were implanted with
114 the most ventral contact at the core of the NAc and the three more dorsal contacts in the vALIC.
115 Following a three-week recovery period, DBS setting optimization was started. The aim of DBS
116 optimization was to maximize antidepressant effects while minimizing side effects. Standardized
117 optimization included changing active contact points and voltage (ranging from 2.5 to 6.0 V). Pulse
118 width and frequency were kept stable (90 microseconds and 130 or 180 Hz, respectively).
119 Standardized optimization ended after a response (defined as a HAM-D-17 score reduction $\geq 50\%$)
120 was reached for at least four weeks or after a maximum of 52 weeks. Details on the surgery and
121 vALIC DBS treatment (including parameter optimization) have been described earlier (13). Individual
122 DBS parameter settings after the standardized parameter optimization are provided in
123 Supplementary Table 1.

124

125 *2.3 Study Design*

126 MRI scanning was performed three weeks prior to DBS surgery (baseline), and after DBS parameter
127 optimization (follow-up). The aim was to keep concurrent medication stable during the optimization
128 phase; however, psychiatrists were allowed to make changes for clinical indications (for an overview
129 of psychotropic medications used over time see Supplementary Table 2). Healthy controls were
130 scanned at baseline and after five months. After follow-up, the DBS group entered the double-blind
131 randomized cross-over phase, which consisted of two blocks of one to six weeks during which DBS
132 stimulation was on (active) or off (sham). Patients could be prematurely crossed over to the next
133 phase while blinding was maintained if this was requested by the patient, or if the treating
134 psychiatrist or research team deemed it clinically indicated and the HAM-D-17 score was at least 15.
135 Concurrent medication and DBS settings were kept stable during the crossover phase. Patients again
136 received MRI scans after both active and sham stimulation.

137 The severity of depressive symptoms was measured at each assessment (baseline, follow-up, active,
138 sham) with the HAM-D-17, with higher scores indicating more severe depressive symptoms. A
139 description of the analyses of the HAM-D-17 scores can be found in Supplementary Methods 1.2.

140

141 *2.4 fMRI Acquisition and Monetary Reward Task*

142 Structural and functional MRI data were collected with a 1.5T Siemens Magnetom Avanto syngo MR
143 scanner with a transmit/receive (Tx/Rx CP) Head Coil. Conform the manufacturer's safety
144 instructions, the DBS devices were switched off during scanning. The devices were turned off just
145 before entering the scanner room and turned back on immediately after leaving the scanner room.
146 For details on the acquisition parameters, see Supplementary Methods 1.3. To probe NAc activation
147 during fMRI data acquisition, patients performed a monetary reward task with an event-related
148 design, which has been shown to consistently activate the NAc (19-21). For a detailed description and
149 visualization of the task, see Supplementary Methods 1.1 and Supplementary Figure 1. In short, the
150 task consisted of 108 trials during which one of three different cues was presented. A reward cue
151 (blue circle) predicted a monetary reward (€0.50/€1.00/€2.00), a neutral cue (brown triangle)

152 predicted no reward/loss, and a loss cue (pink square) predicted a monetary loss (-€0.50/-€1.00/-
153 €2.00). Following a cue, a response window followed where a target (orange exclamation mark) was
154 presented and patients had to respond as quickly as possible with a button press. Successful button
155 presses within the response window led to a win or loss avoidance of the predicted monetary value
156 depending on the presented cue, while a failure to respond within the response window led to no
157 win, or loss of the predicted monetary value depending on the cue. The neutral cue never led to a
158 monetary reward or loss. Subsequently, feedback was shown on screen displaying the amount of
159 money won or lost during the trial as well as the cumulative earnings throughout the task. Reaction
160 times were recorded for each trial. A description of the analysis of the reaction times can be found in
161 Supplementary Methods 1.2.

162

163 *2.4 fMRI Data Analysis*

164 *2.4.1 Preprocessing*

165 Before preprocessing a quality assessment was carried out by manually reviewing MRIQC (22) Image
166 Quality Metrics and visual reports. (f)MRI data were preprocessed using the Statistical Parametric
167 Mapping 12 (SPM12, <https://www.fil.ion.ucl.ac.uk/>) toolbox in MATLAB R2022a (The Math Works,
168 Inc., 2022). Functional images were realigned to the mean functional image and subsequently slice-
169 time corrected. The realignment parameters were inspected and scans with more than 4 mm (one
170 slice thickness) movement in any direction were excluded from the analyses. Next, the T1-weighted
171 image was coregistered to the mean functional image. The T1-weighted image was then segmented
172 and subsequently the functional images and structural image were normalized into standardized
173 Montreal Neurological Institute (MNI) space and resampled to 3 mm isotropic resolution. To improve
174 the signal-to-noise ratio, the functional images were smoothed using an 8-mm full width at half
175 maximum Gaussian kernel.

176

177 *2.4.2 NAc and Whole-Brain Activity*

178 Neural activity during the monetary reward task was estimated with an event-related first-level
179 analysis for each patient at each time-point (baseline, follow-up, active and sham stimulation) using a
180 general linear model. Each type of cue (reward/neutral/loss x monetary value of €0.50/€1.00/€2.00),
181 each type of feedback (reward, neutral, loss), and the six realignment parameters were modeled as
182 separate regressors. Contrast images were created for reward anticipation (reward cues - neutral
183 cues), loss anticipation (loss cues - neutral cues), reward feedback (reward feedback - neutral
184 feedback), and loss feedback (loss feedback - neutral feedback) and were taken to the second-level
185 group analyses. To assess NAc activation, one region-of-interest (ROI) mask for the left and right NAc
186 was created based on the Automated Anatomical Labelling atlas 3 (AAL3) (23). Since the electrodes
187 partially overlap with the NAc in the follow-up data, we created a bilateral electrode mask by first
188 normalizing the voxel intensity of each follow-up scan using the global intensity mean, subsequently
189 thresholding the data to only include voxels with electrode drop-out by selecting an intensity of <0.6,
190 binarizing the data and averaging over time, and then multiplying each individual binary electrode
191 mask to create a bilateral electrode mask averaged over the whole patient sample, which was
192 subsequently multiplied with the bilateral NAc mask. The remaining voxel coverage of the bilateral
193 NAc after removing the electrode artifacts is presented in Supplementary Figure 2. For the
194 longitudinal analyses, we used this mask on both baseline and follow-up data to only include
195 significant differences in NAc regions unaffected by the electrodes.

196

197 *2.4.3 fMRI Statistical Analysis*

198 Baseline group-level analyses were performed using SPM12. To assess baseline group differences, we
199 performed a two-sample t-test between DBS patients and healthy controls with age and sex as added
200 covariates for each of the four contrasts on both whole-brain and ROI (NAc) level. To assess whether
201 baseline NAc and whole-brain activity during reward processing is associated with DBS outcome at
202 follow-up, we performed four separate linear regression analyses with the percentage change in
203 HAM-D-17 scores (follow-up - baseline) as the outcome variable and NAc/whole-brain activity during

204 four different contrasts (during reward anticipation, loss anticipation, reward feedback, or loss
205 feedback) as the predictive variable, and age and sex added as covariates. Since the longitudinal
206 change in HAM-D-17 scores violated normality assumptions, we transformed the values by taking the
207 square root of the proportional change in HAM-D-17 scores with an added value of 1 to ensure
208 positive values. For the resulting scores, a value of 1 represents no change, scores <1 represent
209 decreases in HAM-D-17 scores, and scores >1 represent increases in HAM-D-17 scores following DBS.

210 We used voxel-wise inference for ROI analyses in the left and right NAc and corrected for
211 multiple comparisons using a family-wise error (FWE) rate small volume correction ($\alpha < 0.05$). Whole-
212 brain activation during reward processing was assessed using cluster-wise inference with a cluster-
213 forming threshold of 0.001 and corrected for multiple comparisons using FWE correction ($\alpha < 0.05$).

214 Longitudinal group-level (patients vs. healthy controls and active vs. sham) fMRI analyses
215 were performed using the Sandwich Estimator toolbox for SPM12 (SwE v2.2.0;
216 <http://www.nisox.org/Software/SwE>) (24) (degrees of freedom type II, small sample adjustment for
217 Wild Bootstrap resampling type C2, 999 bootstraps, unrestricted U-SwE). To assess DBS induced
218 changes in NAc activity from baseline compared to follow-up we performed four separate mixed
219 ANOVAs for each contrast with group (DBS vs. healthy controls) as the between-subjects factor and
220 session (baseline vs. follow-up) as the within-subjects factor. Since the time from baseline to follow-
221 up varied greatly within patients (mean=420.78 days, SD=159.15) and between patients and healthy
222 controls (mean=148.00 days, SD=13.74), days since baseline was added as a time-varying covariate to
223 the models. To assess NAc activity following active compared to sham stimulation, we carried out a
224 repeated measures ANOVA with session (active vs. sham) as the within-subjects factor. Due to
225 premature cross-overs, the time between sessions varied between patients (mean=20.63 days,
226 SD=14.26). Therefore, days since baseline as well as the randomization order were added as
227 covariates to the model.

228 For the longitudinal analyses (baseline vs. follow-up and active vs. sham), we used the SwE
229 non-parametric Wild Bootstrap procedure for the ROI analysis with voxel-wise inference and

230 statistical tests across the left and right NAc were corrected for multiple comparisons using a false
231 discovery rate (FDR) small volume correction ($\alpha < 0.05$). Whole brain analyses were performed using
232 the same SwE non-parametric Wild Bootstrap procedure with cluster-wise inference (cluster-forming
233 threshold=0.01). Whole-brain statistical tests were corrected for multiple comparison using FWE
234 correction ($\alpha < 0.05$).

235 To assess whether changes in NAc and whole-brain activity were related to clinical outcome,
236 we performed separate linear regression analyses in SPM12 with the patient group only for each of
237 the four contrasts. For these analyses we modeled the interaction between session (baseline vs.
238 follow-up and active vs. sham) and clinical outcome (transformed percentage change in HAM-D-17
239 scores) while correcting for days since baseline. Results were assessed using the same statistical
240 inference as for the baseline SPM12 analyses described above.

241

242 **3. Results**

243 In total, twenty-five patients and twenty-two healthy controls were included in the clinical trial, but
244 we were unable to acquire data for each participant at all time points. For a detailed overview of the
245 missing data see Supplementary Table 3. Apart from the missing data, we additionally excluded two
246 patients from our baseline analysis due to unrepresentative and missing HAM-D-17 scores at follow-
247 up, two patients due to insufficient brain coverage during fMRI acquisition, one patient due to
248 missing onset times for the monetary reward task, one healthy control due to excessive head motion
249 (>4 mm), and one healthy control due to a missing HAM-D-17 score at baseline, leaving 15 patients
250 and 18 healthy controls in the baseline analyses. For the follow-up analyses, nine patients and 15
251 healthy controls remained after excluding one patient due to insufficient brain coverage during fMRI,
252 one patient due to missing onset times for the monetary reward task, and two healthy controls due
253 to excessive head motion. We included 11 patients in the active vs. sham analyses after excluding
254 one patient due to excessive head motion.

255

256 *3.1 Clinical Results*

257 Demographic and clinical characteristics are presented in Table 1. Patients and healthy controls
258 showed no statistically significant difference in sex, age and estimated IQ. At baseline, patients had
259 significantly higher scores than healthy controls on measures of depressive symptom severity in the
260 HAM-D-17, MADRS, and IDS-SR (all $p < 0.001$). There was a significant reduction in HAM-D-17 score
261 (n=9) from baseline (mean=23.70, 95%CI=18.82-28.51) to follow-up (mean=12.80, 95%CI=7.28-18.28;
262 $t = -2.375$, $p = 0.033$), and patients had a significantly lower HAM-D-17 score (n=11) after active
263 stimulation (mean=14.70, 95%CI=10.08-19.37) compared to sham stimulation (mean=22.00,
264 95%CI=18.41-25.59; $t = -3.380$, $p = 0.0079$).

Table 1. Descriptive characteristics of DBS patients and healthy controls.

Characteristics	Baseline		p-value [†]	Baseline – follow-up		p-value [†]	Active-sham
	DBS	HC		DBS	HC		
Sample size	15	18		9	15		11
Sex, No. (%)							
Female	12 (80%)	11 (61%)	n.s.	8 (87.5%)	9 (60%)	n.s.	8 (73%)
Male	3 (20%)	7 (39%)		1 (12.5%)	6 (40%)		3 (27%)
Age at inclusion							
mean (SD)	52.9 (7.9)	53.2 (8.0)	n.s.	51.6 (8.4)	52.9 (8.3)	n.s.	53.3 (4.9)
median (IQR)**	55.0 (11.0)	55.0 (7.0)		50.0 (6.0)	56.0 (6.0)		
Estimated IQ, mean (SD)	98.0 (15.6)	102.0 (13.5)	n.s.	96.6 (17.4)	104.0 (14.0)	n.s.	96.4 (13.2)
Baseline HAM-D-17 score							
mean (SD)	23.1 (5.6)	0.9 (1.3)	*	23.7 (6.3)	0.7 (1.3)	*	22.4 (6.19)
median (IQR)	23 (8.5)	0.0 (1.0)		23.0 (12.0)	0.0 (1.0)		
Baseline MADRS score							
mean (SD)	34.0 (6.3)	0.8 (1.3)	*	33.9 (6.8)	0.9 (1.4)	*	33.8 (5.8)
median (IQR)	36.0 (7)	0.0 (1.8)		36.0 (7.0)	0.0 (2.0)		
Baseline IDS-SR score							
mean (SD)	49.5 (9.6)	3.2 (2.7)	*	47.9 (9.9)	3.0 (2.3)	*	46.7 (11.5)
median (IQR)	51.0 (14.0)	3.0 (4.0)		47.0 (11.0)	3.0 (4.0)		
Age at MDD onset, mean (SD)							
Self-report	28.7 (16.0)	-		29.9 (17.0)	-		30.5 (15.3)
Diagnosis	37.1 (10.4)	-		36.8 (12.1)	-		38.3 (11.8)
No. of past medications							
mean (SD)	10.0 (3.0)	-		10.7 (3.6)	-		10.5 (3.1)
median (IQR)							10.0 (2.5)
No. of past ECT series							
mean (SD)	2.2 (1.1)	-		2.0 (1.2)	-		1.8 (1.1)
median (IQR)	2.0 (2.0)	-			-		1.0 (1.5)
No. of past ECT sessions							
mean (SD)	52.8 (49.2)	-		56.7 (60.5)	-		50.2 (55.5)
median (IQR)	47 (30)	-		49.0 (37.0)	-		42.0 (28.5)
Years since MDD onset, diagnosis, mean (SD)	15.8 (8.8)	-		14.8 (8.8)	-		15.0 (10.7)
MDD episodes, No. (%)							
1	6 (40%)	-		4 (50%)	-		6 (55%)
2	2 (13%)	-		2 (25%)	-		3 (27%)
>2	7 (47%)	-		2 (25%)	-		2 (18%)

Abbreviations: DBS, Deep Brain Stimulation; HC, healthy controls; SD, standard deviation; IQ, intelligence quotient; HAM-D, Hamilton Rating Scale for Depression; MADRS, Montgomery-Åsberg Depression Rating Scale; IDS-SR, Inventory of Depressive Symptomatology–Self-report; MDD, major depressive disorder; ECT, electroconvulsive therapy.

[†] p-values were obtained with appropriate parametric and non-parametric tests.

* Significant differences between patients and healthy controls (p<0.001).

** median indicated when normality assumptions were violated.

266 3.2 Behavioral Results

267 For both comparative analyses there was a significant main effect of condition for reaction time
268 (baseline vs. follow-up: $F(2,107.96)=3.942$, $p=0.008$; sham vs. active: $F(2,48)=5.018$, $p=0.01$), with
269 average reaction times after reward and loss cues being significantly shorter compared to average
270 reaction times after neutral cues. Additionally, the baseline vs. follow-up analysis revealed a
271 significant interaction effect between group and session ($F(1,112.42)=7.038$, $p=0.009$). Post-hoc
272 comparisons showed that there was no significant difference in average reaction times between
273 patients and healthy controls at baseline. However, average reaction times in healthy controls
274 significantly decreased at follow-up compared to baseline, whereas there was no significant
275 difference in patients. There were no significant interaction effects with condition ($p>0.05$). There
276 was also no significant difference in average reaction times after active compared to sham
277 stimulation ($p>0.05$) and no significant interaction between those sessions and condition ($p>0.05$).

278

279 3.3 fMRI results

280 3.3.1 Baseline

281 Group comparisons did not show any statistically significant differences between patients and
282 healthy controls at baseline in NAc and whole-brain activity during reward anticipation, loss
283 anticipation, reward feedback, or loss feedback ($p_{fwe-corrected}>0.05$).

284 Regression analyses within the patient group between baseline activity and DBS outcome
285 showed that lower NAc activity during loss anticipation was significantly associated with worse
286 outcome ($p_{fwe-corrected}=0.025$, see Figure 1). Additionally, we found that higher midcingulate (MNI: 18,-
287 1,35; cluster extent: 40 voxels; $p_{fwe-corrected}=0.029$, see Figure 2) and caudate nucleus (MNI: -
288 3,17,17; cluster extent: 72 voxels; $p_{fwe-corrected}=0.002$, see Figure 3) activity in reward feedback was
289 significantly associated with worse outcome.

290 One of the patients had an atypical large increase in HAM-D-17 score following DBS
291 combined with largely deviating brain responses during reward processing at baseline. The HAM-D-
292 17 change score of this patient was statistically not deemed to be an outlier. Nonetheless, we

293 investigated whether the associations between activity in these clusters and DBS outcome remained
294 significant without this patient. Within the clusters, associations remained significant for both the
295 caudate nucleus ($p=0.02$) and midcingulate ($p=0.02$), but not for the NAc ($p>0.05$). However, the
296 clusters did not remain statistically significant when we reperformed the whole-brain analyses after
297 excluding this patient.

298 *3.3.2 Baseline vs. Long-Term Follow-up*

299 Neither the whole-brain analysis nor the NAc ROI-analysis showed significant session x group
300 interaction effects ($p_{\text{FWE/FDR-corrected}}>0.05$) for any of the four different contrasts. None of the contrasts
301 showed a significant effect of session on the whole-brain level ($p_{\text{FWE-corrected}}>0.05$) or specifically in the
302 NAc ($p_{\text{FDR-corrected}}>0.05$). Additionally, no significant main effects of group were found after whole-
303 brain analysis ($p_{\text{FWE-corrected}}>0.05$). However, ROI-analysis of the NAc showed a trend towards a
304 significant main effect of group during reward feedback (left: $p_{\text{FDR-corrected}}=0.073$, right: $p_{\text{FDR-}}$
305 $\text{corrected}=0.073$). An exploratory post-hoc comparison showed that patients exhibited decreased right
306 and left NAc activity during reward feedback compared to healthy controls (left: $p_{\text{FDR-corrected}}=0.039$,
307 right: $p_{\text{FDR-corrected}}=0.039$). The other contrasts did not show significant main effects of group in the
308 NAc ($p_{\text{FDR-corrected}}>0.05$).

309 One patient in the longitudinal data did not have a representative HAM-D-17 score at follow
310 up, and we thus assessed if activity changes over time were dependent on the clinical outcome
311 within the group of eight remaining patients. Whole-brain analysis on the activity change (follow-up
312 – baseline) and DBS outcome revealed that an increase in left middle frontal gyrus (MFG) activity
313 during loss feedback was significantly associated with better clinical outcome (MNI: -39,11,32; cluster
314 extent: 32 voxels; $p_{\text{FWE-corrected}}=0.037$, see Figure 4). NAc ROI-analysis for loss feedback did not show
315 an association between activity change and clinical outcome ($p_{\text{FWE-corrected}}>0.05$), and none of the
316 other contrasts showed any significant associations between activity change in the NAc or on the
317 whole-brain level and clinical outcome ($p_{\text{FWE-corrected}}>0.05$).

318

319 *3.3.3 Active vs. Sham DBS*

320 Whole-brain analysis and NAc ROI-analysis of the cross-over phase (active vs. sham) showed no
321 significant effects of session ($p_{FWE/FDR-corrected} > 0.05$) for any of the different contrasts. Additionally,
322 there were no significant associations between activity change in the NAc or on the whole-brain level
323 and clinical outcome for any of the four contrasts ($p_{FWE} > 0.05$).

324

325

326 **4. Discussion**

327 This study aimed to assess the effect of vALIC DBS on reward processing in the NAc and on the
328 whole-brain level, and to study both baseline and longitudinal associations between brain activity
329 during reward processing and DBS outcome. The results showed that higher caudate nucleus and
330 midcingulate cortex activation during reward feedback processing and lower NAc activation during
331 loss anticipation were associated with worse DBS outcome. Although DBS resulted in a significant
332 decrease in depressive symptoms, we found no significant effect of DBS on changes in reward
333 processing when the whole group of patients was compared to healthy controls, nor after a period of
334 active compared to sham stimulation. Though within the patient group, we observed a significant
335 association between increased MFG response to loss feedback following DBS and a better DBS
336 outcome in patients.

337 The brain regions found to be associated with DBS outcome (the NAc, midcingulate cortex,
338 and the caudate nucleus) have previously shown to be involved in reward processes and reward-
339 based decision making (25-27). In addition, these regions have previously been implicated in the
340 neurobiology of TRD (28-30), and have consistently shown hypoactivity during reward feedback in
341 MDD and relations to anhedonia (17, 31, 32). While we did not find a significant difference in brain
342 activity in these regions between patients and controls at baseline, our findings imply that functional
343 variation in the NAc, midcingulate cortex, and caudate nucleus within the patient group may still be
344 relevant for the outcome of DBS.

345 Despite a significant reduction in depression symptoms after (active) DBS, patients did not
346 show changes in brain reward circuit regions following long-term DBS or after active compared to
347 sham stimulation. This result is in contrast with our previous study in obsessive-compulsive disorder,
348 in which we reported that DBS restores aberrant NAc function during reward processing (9). This
349 discrepancy could possibly be explained by different underlying biological disease mechanisms, but
350 may also be due to differences in study design, as the study in obsessive-compulsive disorder
351 compared patients following one year of active stimulation and after one week of DBS cessation.
352 Nonetheless, since a large body of literature suggests that MDD is associated with aberrant reward
353 processing in the brain (e.g. 8, 17, 33) and we specifically aimed to target the reward circuit by
354 stimulation of the vALIC, it was surprising to find no DBS induced changes in reward processing. As
355 we did not include a scale that specifically measured anhedonia, we cannot be entirely sure that
356 vALIC DBS reduced anhedonia. Since anhedonia is specifically linked to activity in the reward circuit
357 (e.g. 32), this could explain why we did not find reward circuit modulation after DBS. However, given
358 the substantial reduction in depressive symptoms in our sample, it seems unlikely that DBS did not
359 have any influence on anhedonia.

360 But while there were no significant changes over time in reward processing when we
361 compared the entire group of DBS patients to healthy controls, we did find an association between
362 MFG activity during loss feedback and DBS outcome. Specifically, our results imply that MFG activity
363 increases following DBS lead to better DBS outcome. The MFG has previously shown involvement in
364 reward and loss processing (34, 35), may genetically and functionally be involved in depression (17,
365 36), and is an important target for repetitive transcranial magnetic stimulation treatment of
366 depression (37). While we found this association in only a small group of patients and thus requires
367 further investigation, it corroborates previous findings on the involvement of the MFG in depression
368 and its clinical treatments.

369 Overall, we observed quite remarkable variation in recorded brain responses during the
370 various reward conditions. While this facilitated the detection of associations between neural

371 responses and DBS outcome, we did not find overall differences between DBS patients and healthy
372 controls at baseline. The high variation recorded in the small sample of this study may have limited
373 our power in detecting group differences. Additionally, one of the patients in this study had a
374 deviating HAM-D-17 change score combined with more extreme brain responses during reward
375 processing, which was largely driving the associations between brain responses during reward
376 processing and DBS outcome. Although these associations remained significant in the caudate
377 nucleus and midcingulate without this patient, the association between NAc responses to loss
378 anticipation and DBS outcome disappeared, and we were not able to detect significant clusters when
379 removing the patient from the analyses. While this limits the robustness of our findings, it could also
380 be that smaller associations were not detectable with the reduced power after removing this patient
381 altogether. Nonetheless, the deviating HAM-D-17 change score of this patient was not a statistical
382 outlier and high variation in responses to reward cues is common in regions such as the NAc in MDD,
383 with the most deviating responses correlating with anhedonia and suicidal ideation severity (38). To
384 the best of our knowledge, no study has previously investigated the role of brain reward circuit
385 functioning as a predictor for DBS outcome. Thus, we cannot conclude whether the recorded
386 responses to different reward cues in this patient was an exception and significant outlier, or
387 whether this largely deviating response holds clinical relevance for associations with DBS outcome.

388 An important limitation of this study is the limited number of patients that could be included
389 in the longitudinal analysis, which may have affected our results and their replicability in similar
390 future studies (39). This study was part of a randomized controlled clinical trial, and the required
391 sample size was calculated based on the required power to determine the therapeutic efficacy of
392 vALIC DBS (13). The effects of DBS on fMRI measures were secondary outcomes of the study for
393 which we unfortunately had less data (and thus power) to detect reward processing changes when
394 compared to healthy controls. Due to this lack of power, this study also did not control for additional
395 factors such as medication use. Nevertheless, the sample size is relatively large for an fMRI study
396 with TRD patients undergoing DBS. Future studies powered with fMRI outcomes as one of the

397 primary outcome measures, have to reveal whether DBS may have smaller effects on reward
398 processing and to investigate how clinical factors affect the outcome of DBS and its effects on reward
399 processing. Another limitation is that we were unable to investigate acute DBS effects on brain
400 regions involved in reward processing as the DBS systems had to be switched off during scanning
401 due to safety reasons. Future studies using DBS systems which can be safely turned on during
402 scanning could determine whether acute effects of DBS on reward processing in the brain play a role
403 in its working mechanism.

404 In summary, we found associations between baseline activity in the midcingulate cortex,
405 caudate nucleus, and NAc during reward processing and DBS outcome in TRD, but no general short-
406 term or long-term effects of DBS on reward processing compared to healthy controls. Instead, we
407 observed a significant association between MFG response increases to loss feedback and a better
408 DBS outcome. These findings have to be replicated in larger samples to determine whether reward
409 processing could be relevant for our understanding and optimization of DBS treatment in patients
410 with TRD.

411

412 **Acknowledgments**

413 Funding: This investigator-initiated study was funded by Medtronic Inc (25 DBS systems, in kind) and
414 a research grant from ZonMw (nr. 171201008).

415

416 **Competing interests**

417 The authors declare the following financial interests/personal relationships which may be considered
418 as potential competing interests: This investigator-initiated study was funded by Medtronic Inc (25
419 DBS systems, in kind) and a grant from ZonMw (nr. 171201008). The funders had no role in the
420 design, execution, and analysis of the study, nor in writing of the manuscript or the decision to
421 publish. Nora Runia, Isidoor Bergfeld, Pepijn van den Munckhof, P. Richard Schuurman, Damiaan
422 Denys, and Guido van Wingen currently execute an investigator-initiated clinical trial on deep brain
423 stimulation for depression, which is funded by Boston Scientific (24 DBS systems in kind) and a grant

424 of ZonMw (nr. 636310016). P. Richard Schuurman acts as consultant for Boston Scientific and
425 Medtronic on educational events. All other authors do not declare any conflicts of interest.

426

427 (Supplementary information is available at MP's website)

428

429 **References**

430

431 1. Gaynes BN, Lux L, Gartlehner G, Asher G, Forman-Hoffman V, Green J, et al. Defining
432 treatment-resistant depression. *Depression and anxiety*. 2020;37(2):134-45.

433 2. Bergfeld IO, Figeo M. Deep Brain Stimulation for Depression. *Fundamentals and Clinics of*
434 *Deep Brain Stimulation: Springer*; 2020. p. 279-90.

435 3. Coenen VA, Schlaepfer TE, Goll P, Reinacher PC, Voderholzer U, Van Elst LT, et al. The medial
436 forebrain bundle as a target for deep brain stimulation for obsessive-compulsive disorder. *CNS*
437 *spectrums*. 2017;22(3):282-9.

438 4. Coenen VA, Schlaepfer TE, Maedler B, Panksepp J. Cross-species affective functions of the
439 medial forebrain bundle—Implications for the treatment of affective pain and depression in humans.
440 *Neuroscience & Biobehavioral Reviews*. 2011;35(9):1971-81.

441 5. Coenen VA, Schlaepfer TE, Sajonz B, Döbrössy M, Kaller CP, Urbach H, Reisert M.
442 Tractographic description of major subcortical projection pathways passing the anterior limb of the
443 internal capsule. Corticopetal organization of networks relevant for psychiatric disorders.
444 *NeuroImage: Clinical*. 2020;25:102165.

445 6. Dillon DG, Gonenc A, Belleau E, Pizzagalli DA. Depression is associated with dimensional and
446 categorical effects on white matter pathways. *Depression and anxiety*. 2018;35(5):440-7.

447 7. Henderson SE, Johnson AR, Vallejo AI, Katz L, Wong E, Gabbay V. A preliminary study of white
448 matter in adolescent depression: relationships with illness severity, anhedonia, and irritability.
449 *Frontiers in psychiatry*. 2013;4:152.

450 8. Höflich A, Michenthaler P, Kasper S, Lanzenberger R. Circuit mechanisms of reward,
451 anhedonia, and depression. *International Journal of Neuropsychopharmacology*. 2019;22(2):105-18.

452 9. Figeo M, Luigjes J, Smolders R, Valencia-Alfonso C-E, Van Wingen G, De Kwaasteniet B, et al.
453 Deep brain stimulation restores frontostriatal network activity in obsessive-compulsive disorder.
454 *Nature neuroscience*. 2013;16(4):386-7.

455 10. Park HR, Kim IH, Kang H, McCairn KW, Lee DS, Kim B-N, et al. Electrophysiological and
456 imaging evidence of sustained inhibition in limbic and frontal networks following deep brain
457 stimulation for treatment refractory obsessive compulsive disorder. *PLoS One*. 2019;14(7):e0219578.

- 458 11. Runia N, Bergfeld IO, de Kwaasteniet BP, Luigjes J, van Laarhoven J, Notten P, et al. Deep
459 brain stimulation normalizes amygdala responsivity in treatment-resistant depression. *Molecular*
460 *psychiatry*. 2023;28(6):2500-7.
- 461 12. Schlaepfer TE, Bewernick BH, Kayser S, Hurlmann R, Coenen VA. Deep brain stimulation of
462 the human reward system for major depression—rationale, outcomes and outlook.
463 *Neuropsychopharmacology*. 2014;39(6):1303-14.
- 464 13. Bergfeld IO, Mantione M, Hoogendoorn ML, Ruhé HG, Notten P, van Laarhoven J, et al. Deep
465 brain stimulation of the ventral anterior limb of the internal capsule for treatment-resistant
466 depression: a randomized clinical trial. *JAMA psychiatry*. 2016;73(5):456-64.
- 467 14. Gutman DA, Holtzheimer PE, Behrens TE, Johansen-Berg H, Mayberg HS. A tractography
468 analysis of two deep brain stimulation white matter targets for depression. *Biological psychiatry*.
469 2009;65(4):276-82.
- 470 15. Bayassi-Jakowicka M, Lietzau G, Czuba E, Steliga A, Waśkow M, Kowiański P. Neuroplasticity
471 and Multilevel System of Connections Determine the Integrative Role of Nucleus Accumbens in the
472 Brain Reward System. *Int J Mol Sci*. 2021;22(18).
- 473 16. Liu R, Wang Y, Chen X, Zhang Z, Xiao L, Zhou Y. Anhedonia correlates with functional
474 connectivity of the nucleus accumbens subregions in patients with major depressive disorder.
475 *NeuroImage: Clinical*. 2021;30:102599.
- 476 17. Yang X, Su Y, Yang F, Song Y, Yan J, Luo Y, Zeng J. Neurofunctional mapping of reward
477 anticipation and outcome for major depressive disorder: a voxel-based meta-analysis. *Psychological*
478 *medicine*. 2022;52(15):3309-22.
- 479 18. Zhou B, Chen Y, Zheng R, Jiang Y, Li S, Wei Y, et al. Alterations of static and dynamic
480 functional connectivity of the Nucleus Accumbens in patients with Major Depressive Disorder.
481 *Frontiers in Psychiatry*. 2022;13:877417.
- 482 19. Knutson B, Adams CM, Fong GW, Hommer D. Anticipation of increasing monetary reward
483 selectively recruits nucleus accumbens. *Journal of Neuroscience*. 2001;21(16):RC159-RC.
- 484 20. Knutson B, Fong GW, Adams CM, Varner JL, Hommer D. Dissociation of reward anticipation
485 and outcome with event-related fMRI. *Neuroreport*. 2001;12(17):3683-7.
- 486 21. Knutson B, Westdorp A, Kaiser E, Hommer D. FMRI visualization of brain activity during a
487 monetary incentive delay task. *Neuroimage*. 2000;12(1):20-7.
- 488 22. Esteban O, Birman D, Schaer M, Koyejo OO, Poldrack RA, Gorgolewski KJ. MRIQC: Advancing
489 the automatic prediction of image quality in MRI from unseen sites. *PLoS one*. 2017;12(9):e0184661.
- 490 23. Rolls ET, Huang C-C, Lin C-P, Feng J, Joliot M. Automated anatomical labelling atlas 3.
491 *Neuroimage*. 2020;206:116189.

- 492 24. Guillaume B, Hua X, Thompson PM, Waldorp L, Nichols TE, Initiative AsDN. Fast and accurate
493 modelling of longitudinal and repeated measures neuroimaging data. *NeuroImage*. 2014;94:287-302.
- 494 25. Balleine BW, Delgado MR, Hikosaka O. The role of the dorsal striatum in reward and decision-
495 making. *Journal of Neuroscience*. 2007;27(31):8161-5.
- 496 26. Burton AC, Nakamura K, Roesch MR. From ventral-medial to dorsal-lateral striatum: neural
497 correlates of reward-guided decision-making. *Neurobiology of learning and memory*. 2015;117:51-9.
- 498 27. Vogt BA. Midcingulate cortex: structure, connections, homologies, functions and diseases.
499 *Journal of chemical neuroanatomy*. 2016;74:28-46.
- 500 28. Amiri S, Arbabi M, Kazemi K, Parvaresh-Rizi M, Mirbagheri MM. Characterization of brain
501 functional connectivity in treatment-resistant depression. *Progress in Neuro-Psychopharmacology
502 and Biological Psychiatry*. 2021:110346.
- 503 29. Sun J, Ma Y, Guo C, Du Z, Chen L, Wang Z, et al. Distinct patterns of functional brain network
504 integration between treatment-resistant depression and non treatment-resistant depression: A
505 resting-state functional magnetic resonance imaging study. *Progress in Neuro-Psychopharmacology
506 and Biological Psychiatry*. 2023;120:110621.
- 507 30. Wu QZ, Li DM, Kuang WH, Zhang TJ, Lui S, Huang XQ, et al. Abnormal regional spontaneous
508 neural activity in treatment-refractory depression revealed by resting-state fMRI. *Human brain
509 mapping*. 2011;32(8):1290-9.
- 510 31. Pizzagalli DA, Holmes AJ, Dillon DG, Goetz EL, Birk JL, Bogdan R, et al. Reduced caudate and
511 nucleus accumbens response to rewards in unmedicated individuals with major depressive disorder.
512 *American Journal of Psychiatry*. 2009;166(6):702-10.
- 513 32. Wacker J, Dillon DG, Pizzagalli DA. The role of the nucleus accumbens and rostral anterior
514 cingulate cortex in anhedonia: integration of resting EEG, fMRI, and volumetric techniques.
515 *Neuroimage*. 2009;46(1):327-37.
- 516 33. Zhang W-N, Chang S-H, Guo L-Y, Zhang K-L, Wang J. The neural correlates of reward-related
517 processing in major depressive disorder: a meta-analysis of functional magnetic resonance imaging
518 studies. *Journal of affective disorders*. 2013;151(2):531-9.
- 519 34. Dugré JR, Dumais A, Bitar N, Potvin S. Loss anticipation and outcome during the Monetary
520 Incentive Delay Task: a neuroimaging systematic review and meta-analysis. *PeerJ*. 2018;6:e4749.
- 521 35. Knutson B, Bhanji JP, Cooney RE, Atlas LY, Gotlib IH. Neural responses to monetary incentives
522 in major depression. *Biological psychiatry*. 2008;63(7):686-92.
- 523 36. Liu X, Hou Z, Yin Y, Xie C, Zhang H, Zhang H, et al. CACNA1C gene rs11832738 polymorphism
524 influences depression severity by modulating spontaneous activity in the right middle frontal gyrus in
525 patients with major depressive disorder. *Frontiers in Psychiatry*. 2020;11:73.

526 37. Pommier B, Vassal F, Boutet C, Jeannin S, Peyron R, Failenot I. Easy methods to make the
527 neuronavigated targeting of DLPFC accurate and routinely accessible for rTMS. *Neurophysiologie*
528 *Clinique/Clinical Neurophysiology*. 2017;47(1):35-46.

529 38. Misaki M, Suzuki H, Savitz J, Drevets WC, Bodurka J. Individual variations in nucleus
530 accumbens responses associated with major depressive disorder symptoms. *Scientific reports*.
531 2016;6(1):21227.

532 39. Turner BO, Paul EJ, Miller MB, Barbey AK. Small sample sizes reduce the replicability of task-
533 based fMRI studies. *Communications biology*. 2018;1(1):62.

534

535

536

537 **Figure 1. Negative association between nucleus accumbens response during loss anticipation at**

538 **baseline and DBS outcome.** Results from ROI-based regression analysis revealed that higher

539 responses during loss anticipation led to a better outcome in vALIC DBS ($p_{\text{FWE-corrected}}=0.025$).

540 HAMD=Hamilton-Depression Rating Scale.

541

542

543 **Figure 2: Positive association between right midcingulate response to reward feedback at baseline**

544 **and DBS outcome.** Whole-brain regression analysis revealed a statistically significant cluster in the

545 right midcingulate gyrus where lower responses to reward feedback led to a better outcome in vALIC

546 DBS ($p_{\text{FWE-corrected}}=0.029$). HAMD=Hamilton-Depression Rating Scale.

547

548

549 **Figure 3: Positive association between right caudate nucleus response to reward feedback at**

550 **baseline and DBS outcome.** Whole-brain regression analysis revealed a statistically significant cluster

551 in the right caudate nucleus, where lower responses to reward feedback led to a better outcome in

552 vALIC DBS ($p_{\text{FWE-corrected}}=0.002$). HAMD=Hamilton-Depression Rating Scale.

553

554

555 **Figure 4: Association between longitudinal changes in the left middle frontal gyrus response to loss**

556 **feedback and DBS outcome.** Whole-brain regression analysis revealed an association between

557 changes in the left MFG response to loss feedback and HAM-D-17 change following vALIC DBS

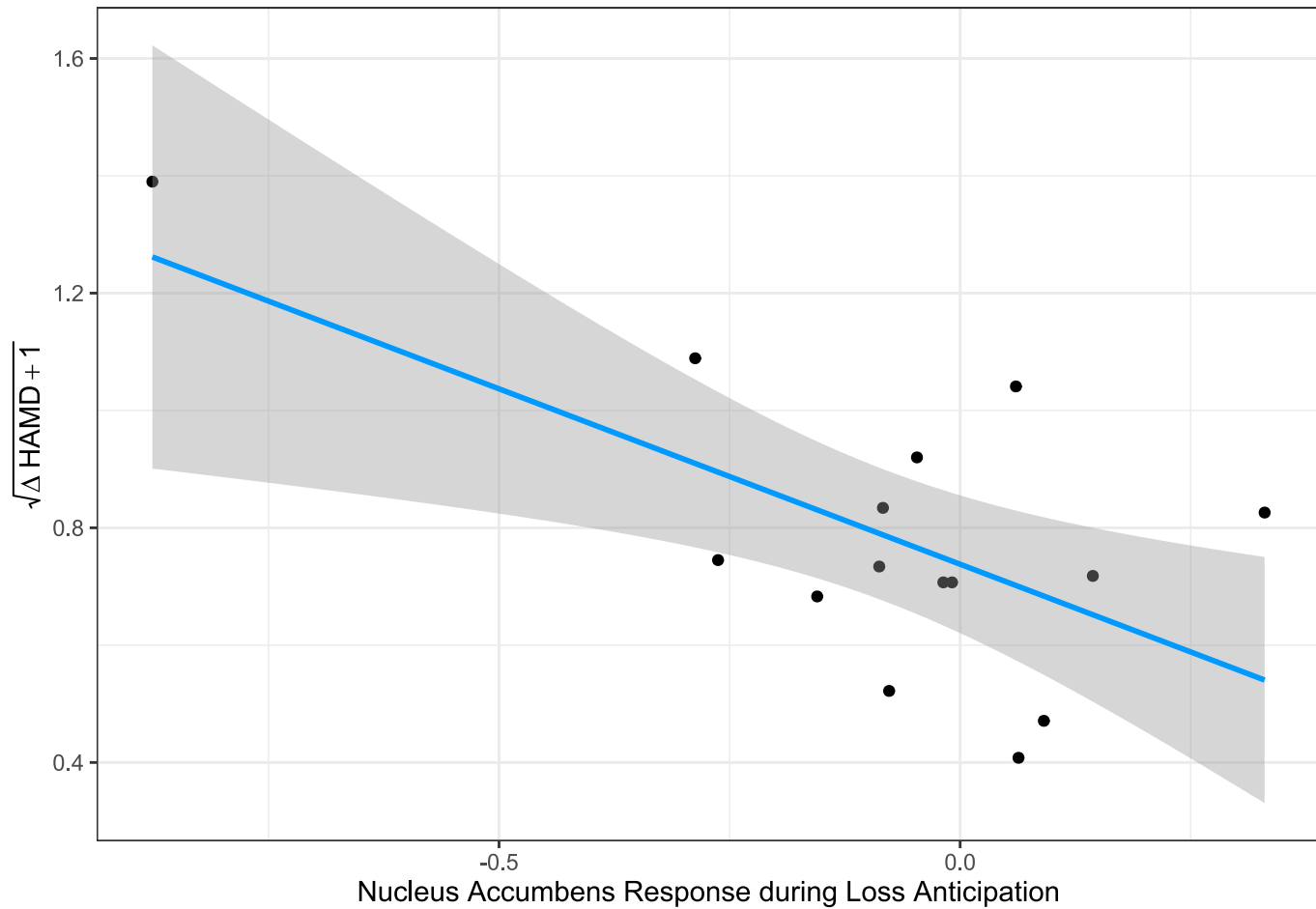
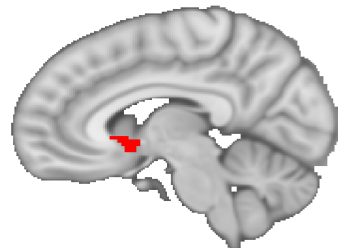
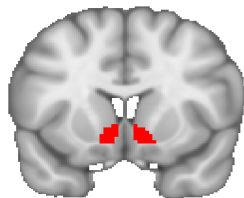
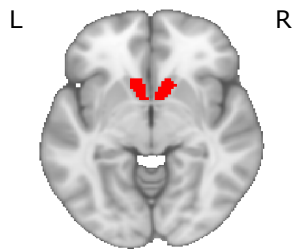
558 treatment, with an increase in left MFG response to loss feedback being associated with higher

559 clinical improvement ($p_{\text{FWE-corrected}}=0.037$). HAMD=Hamilton Depression Rating Scale, MFG=middle

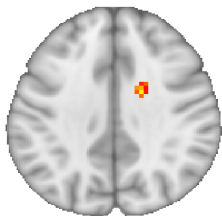
560 frontal gyrus.

561

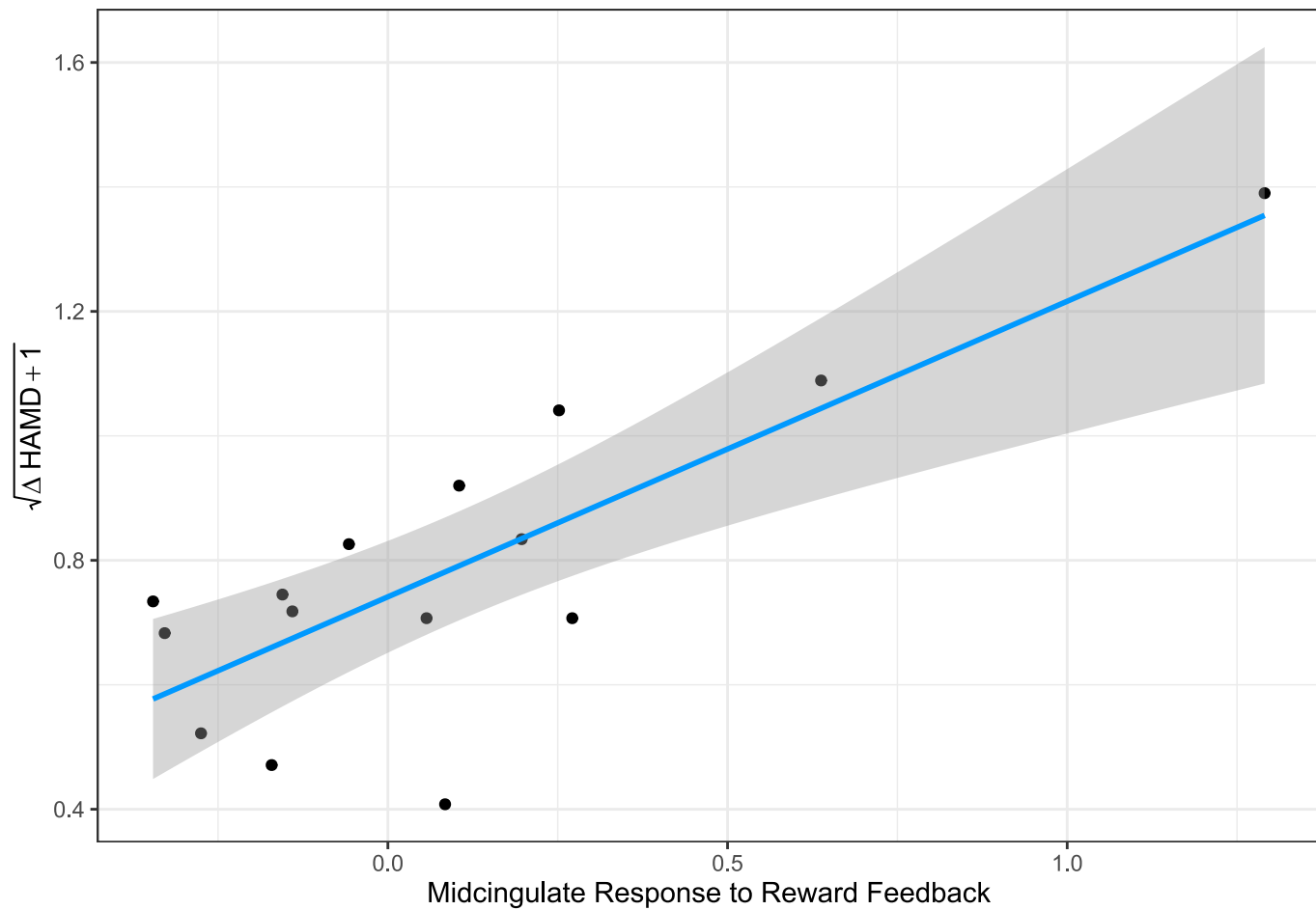
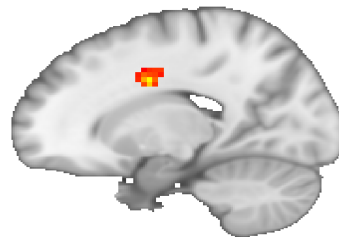
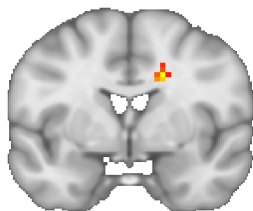
562



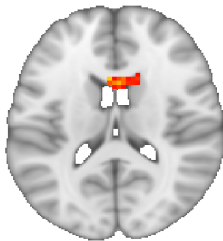
L



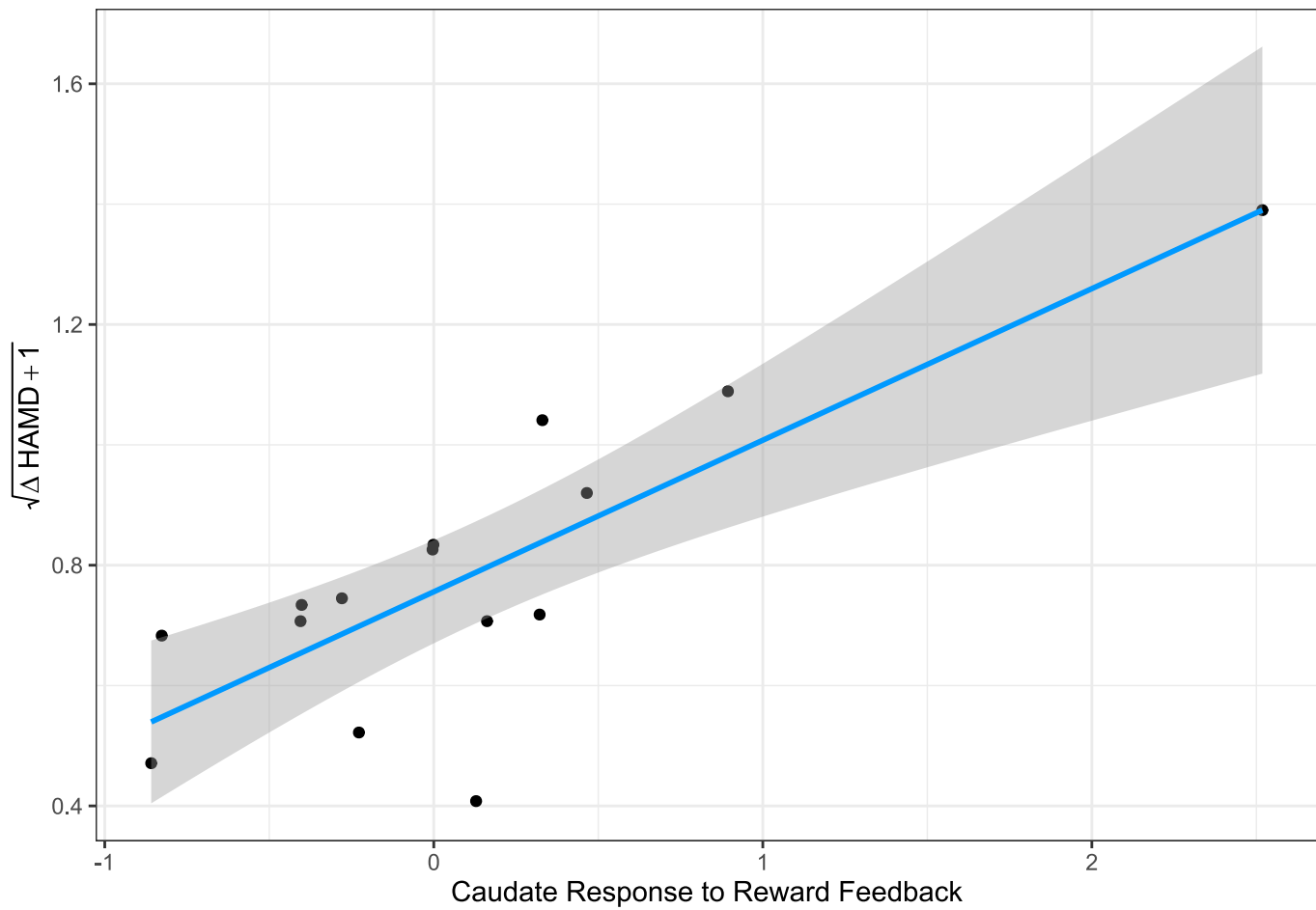
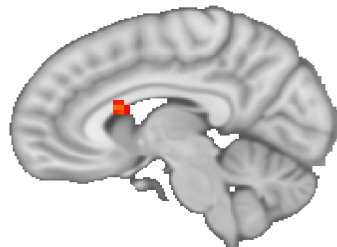
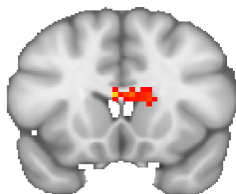
R



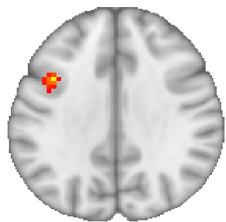
L



R



L



R

