

Authors:

Xingbei Dong (Peking Union Medical College Hospital, Peking Union Medical College & Chinese Academy of Medical Sciences, National Clinical Research Center for Dermatologic and Immunologic Diseases, Ministry of Science & Technology, Key Laboratory of Rheumatology and Clinical Immunology, Ministry of Education, State Key Laboratory of Complex Severe and Rare Diseases, Ministry of Science & Technology)

Jiuliang Zhao (Peking Union Medical College Hospital, Chinese Academy of Medical Sciences)

Junyan Qian (Peking Union Medical College Hospital, Peking Union Medical College & Chinese Academy of Medical Sciences, National Clinical Research Center for Dermatologic and Immunologic Diseases, Ministry of Science & Technology, Key Laboratory of Rheumatology and Clinical Immunology, Ministry of Education, State Key Laboratory of Complex Severe and Rare Diseases, Ministry of Science & Technology)

Wei Wei (Tianjin Medical University General Hospital)

Miaoja Zhang (The First Affiliated Hospital of Nanjing Medical University(Jiangsu Province Hospital))

Xiao Zhang (Department of Rheumatology, Guangdong General Hospital, Guangzhou, China)

Xiaofei Shi (the First Affiliated Hospital of Henan University of science and Technology, Luoyang, China)

Yisha Li (Xiangya Hospital, Central South University, Changsha, China)

Xiaoping Hong (Shenzhen People's Hospital, Shenzhen, China)

Qiang Shu (Qilu Hospital of Shandong University, Jinan, China)

Shuhong Chi (General Hospital of Ningxia Medical University, Yinchuan, China)

Xin Dong (Beijing Chao-Yang Hospital, Capital Medical University, Beijing, China)

Ping Zhu (Department of Clinical Immunology, Xijing Hospital, and National Translational Science Center for Molecular Medicine, Fourth Military Medical University)

Rong Zhang (the First Hospital of China Medical University, Shenyang, China)

Zhuoli Zhang (Peking University First Hospital)

Hongfeng Zhang (The First Hospital of Dalian Medical University)

Xinwang Duan (The Second Affiliated Hospital of Nanchang University)

Jing Xue (the Second Affiliated Hospital of Zhejiang University School of Medicine, Hangzhou, China)

Shuhong Zhou (Gansu Provincial Hospital, Lanzhou, China)

Hongbin Li (Affiliated Hospital of Inner Mongolia Medical College)

Dan Chen (the First Affiliated Hospital of Wenzhou Medical University, Wenzhou, China)

Junwei Zhang (Beijing Chao-Yang Hospital, Capital Medical University, Beijing, China)

Yanhong WANG (Peking Union Medical College)

Zhuang Tian (Peking Union Medical College, Chinese Academy of Medical Sciences, Peking Union Medical College Hospital)

Yong-Tai Liu (Peking Union Medical College, Chinese Academy of Medical Sciences, Peking Union Medical College Hospital)

Mengtao Li (Peking Union Medical College Hospital, Department of Rheumatology and Clinical Immunology)

Xiaofeng ZENG (Peking Union Medical College Hospital, Department of Rheumatology and Clinical Immunology)

Qian Wang (Peking Union Medical College Hospital, Peking Union Medical College and Chinese Academy of Medical Sciences, National Clinical Research Center for Dermatologic and Immunologic Diseases, Ministry of Science & Technology, Key Laboratory of Rheumatology and Clinical Immunology, Ministry of Education)

1 **Improvements and challenges of long-term survival in patients with**
2 **systemic lupus erythematosus-associated pulmonary arterial**
3 **hypertension: A 10-year multi-center cohort study**

4
5 **Short title: Improved survival and challenges of SLE-PAH**

6
7 Xingbei Dong, MD.1,2,3,4,* , Jiuliang Zhao, MD.1,2,3,4,* , Junyan Qian, MD.1,2,3,4,* , Wei
8 Wei, MD.5,* , Miaojia Zhang, MD.6, Xiao Zhang, MD.7, Xiaofei Shi, MD.8, Yisha Li,
9 MD.9, Xiaoping Hong, MD.10, Qiang Shu, MD.11, Shuhong Chi, MD.12, Xin Dong,
10 MD.13, Ping Zhu, MD.14, Rong Zhang, MD.15, Zhuoli Zhang, MD.16, Hongfeng Zhang,
11 MD.17, Xinwang Duan, MD.18, Jing Xue, MD.19, Shuhong Zhou, MD.20, Hongbin Li,
12 MD.21, Dan Chen, MD.22, Junwei Zhang, MD.23, Yanhong Wang, Ph.D.24, Zhuang Tian,
13 MD.25, Yongtai Liu, MD.25, Mengtao Li, MD.1,2,3,4,‡, Xiaofeng Zeng, MD.1,2,3,4,‡,
14 Qian Wang, MD.1,2,3,4,‡

15

16 *Xingbei Dong, Jiuliang Zhao, Junyan Qian, and Wei Wei contributed equally to this study.

17 ‡Correspondence to: Prof Mengtao Li, +86-13911788572, mengtao.li@cstar.org.cn; Prof
18 Xiaofeng Zeng, +86-13501069845, xiaofeng.zeng@cstar.org.cn; Prof Qian Wang,
19 +86-13681211155, wangqian_pumch@126.com. Department of Rheumatology and
20 Clinical Immunology, Peking Union Medical College Hospital, Chinese Academy of

21 Medical Sciences, Peking Union Medical College. National Clinical Research Center for
22 Dermatologic and Immunologic Diseases (NCRC-DID), Ministry of Science &
23 Technology. State Key Laboratory of Complex Severe and Rare Diseases, Peking Union
24 Medical College Hospital. Key Laboratory of Rheumatology and Clinical Immunology,
25 Ministry of Education, Beijing 100730, China.

26

27 1. Department of Rheumatology and Clinical Immunology, Peking Union Medical
28 College Hospital, Chinese Academy of Medical Sciences, Peking Union Medical
29 College.

30 2. National Clinical Research Center for Dermatologic and Immunologic Diseases
31 (NCRC-DID), Ministry of Science & Technology.

32 3. State Key Laboratory of Complex Severe and Rare Diseases, Peking Union Medical
33 College Hospital.

34 4. Key Laboratory of Rheumatology and Clinical Immunology, Ministry of Education,
35 Beijing 100730, China.

36 5. Department of Rheumatology, Tianjin Medical University General Hospital, Tianjin,
37 China.

38 6. Department of Rheumatology, the First Affiliated Hospital of Nanjing Medical
39 University, Nanjing, China.

40 7. Department of Rheumatology, Guangdong General Hospital, Guangzhou, China.

41 8. Department of Rheumatology, the First Affiliated Hospital of Henan University of
42 science and Technology, Luoyang, China.

- 43 9. Department of Rheumatology, Xiangya Hospital, Central South University, Changsha,
44 China.
- 45 10. Department of Rheumatology, Shenzhen People's Hospital, Shenzhen, China.
- 46 11. Department of Rheumatology, Qilu Hospital of Shandong University, Jinan, China.
- 47 12. Department of Rheumatology, General Hospital of Ningxia Medical University,
48 Yinchuan, China.
- 49 13. Department of Rheumatology, Beijing Chao-Yang Hospital, Capital Medical University,
50 Beijing, China.
- 51 14. Department of Clinical Immunology, PLA Specialised Research Institute of
52 Rheumatology and Immunology, Xijing Hospital, Fourth Military Medical University,
53 Xi'an, China.
- 54 15. Department of Rheumatology, the First Hospital of China Medical University,
55 Shenyang, China.
- 56 16. Department of Rheumatology and Clinical Immunology, Peking University First
57 Hospital, Beijing, China.
- 58 17. Department of Rheumatology, the First Affiliated Hospital of Dalian Medical
59 University, Dalian, China.
- 60 18. Department of Rheumatology, the Second Affiliated Hospital of Nanchang University,
61 Nanchang, China.
- 62 19. Department of Rheumatology, the Second Affiliated Hospital of Zhejiang University
63 School of Medicine, Hangzhou, China.
- 64 20. Department of Rheumatology, Gansu Provincial Hospital, Lanzhou, China.

65 21. Department of Rheumatology, the Affiliated Hospital of Inner Mongolia Medical
66 University, Hohhot, China.

67 22. Department of Rheumatology, the First Affiliated Hospital of Wenzhou Medical
68 University, Wenzhou, China.

69 23. Department of Critical Respiratory Medicine, Beijing Chao-Yang Hospital, Capital
70 Medical University, Beijing, China.

71 24. Department of Epidemiology and Bio-statistics, Institute of Basic Medical Sciences,
72 Chinese Academy of Medical Sciences and Peking Union Medical College, Beijing,
73 China.

74 25. Department of Cardiology, Peking Union Medical College Hospital, Peking Union
75 Medical College and Chinese Academy of Medical Sciences, Beijing, China.

76

77 **Word Count : 5014**

78 **What is new?**

- 79 ● This is the largest multi-center prospective cohort study of SLE-PAH with the longest
80 follow-up period describing changes in the characteristics, treatment regimen, and
81 long-term survival of patients with SLE-PAH.
- 82 ● Our study showed that the 5-year survival rate of patients with SLE-PAH has
83 increased remarkably from 77.5% to 88.1% during the last decade.
- 84 ● Our study demonstrated that reaching lupus low-disease-activity state is independently
85 associated with reduced mortality. Significantly more patients reached low-risk profile
86 of PAH during follow-up with initiation of intensive immunosuppressive therapy.

87

88 **What are the clinical implications?**

- 89 ● Our study emphasised on the importance of achieving dual treatment goals for both
90 SLE and PAH (dual treat-to-target strategy).
- 91 ● Earlier detection of PAH in patients with SLE, timely initiation of intensive
92 immunosuppressive therapy, and upfront combination PAH-targeted therapy benefit
93 patients in achieving PAH low-risk profile.

94 **Abstract**

95 **Background:** Prior studies indicated improved survival in systemic sclerosis-associated
96 pulmonary arterial hypertension (PAH) patients, but trends in systemic lupus
97 erythematosus-associated PAH (SLE-PAH) survival remained unclear.

98 **Methods:** Analysing SLE-PAH patients from the nationwide CSTAR-PAH cohort, we
99 divided them into two cohorts: A (2011-2016) and B (2016-2021), based on baseline right
100 heart catheterization dates. We compared clinical characteristics, mortality, and treatment
101 outcomes between these cohorts and with idiopathic PAH (IPAH) patients.

102 **Results:** We enrolled 610 and 104 patients with SLE-PAH and IPAH, respectively. Patients
103 with SLE-PAH were younger, had a higher proportion of low-risk patients, and had a
104 significantly higher 10-year survival rate than those with IPAH (66.6% vs. 44.1%, $p <$
105 0.001). Cohort B had a longer 6-min walk distance, lower mean pulmonary arterial
106 pressure and pulmonary vascular resistance, a better-preserved cardiac index, and less right
107 ventricular dilation than cohort A. More patients in cohort B received intensive
108 immunosuppressant- and PAH-targeted therapies. The 5-year survival rate was
109 significantly higher in cohort B (88.1% vs. 77.5%, $p = 0.006$). Reaching low-risk profile
110 of PAH (hazard ratio [HR] 0.34, 95% confidence interval [CI] 0.15-0.79, $p = 0.012$) and
111 reaching lupus low-disease-activity state (HR 0.33, 95% CI 0.14-0.82, $p = 0.016$) were
112 independent predictors of survival. The rate of achieving low-risk profile for PAH was
113 considerably higher in patients initially treated with intensive immunosuppressive and
114 dual-PAH-targeted therapies.

115 **Conclusions:** Over the last decade in China, the clinical characteristics of patients with
116 SLE-PAH have evolved and survival has improved. Early PAH detection and dual
117 treatment-to-target strategies for both PAH and SLE have contributed to this improvement
118 in survival.

119

120 **Keywords:** pulmonary arterial hypertension, systemic lupus erythematosus, long-term
121 survival, lupus low-disease-activity state, dual treat-to-target strategy

122 **Introduction**

123 Pulmonary arterial hypertension (PAH) is a pathophysiological disorder characterised by
124 progressive pressure elevation in the pulmonary circulation due to pulmonary vascular
125 disease, eventually leading to right heart failure¹. Connective tissue disease (CTD) is one
126 of the major aetiologies of PAH, accounting for 13.1%–25.3% of cases of PAH²⁻⁴.
127 Meanwhile, PAH is a severe and frequent complication of CTD and remains a leading
128 cause of mortality in patients with CTD⁵.

129 Over the last two decades, the development of PAH medications targeting the endothelin-1,
130 nitric oxide, and prostaglandin I₂ pathways and the constant refinement of treatment
131 strategies have led to improvements in the clinical outcomes of patients with PAH^{3,4,6}. A
132 recent study performed at Johns Hopkins Pulmonary Hypertension Center reported that
133 transplant-free survival markedly improved in patients with systemic sclerosis
134 (SSc)-associated PAH (SSc-PAH)⁷.

135 Unlike in Western populations, systemic lupus erythematosus (SLE)-associated PAH
136 (SLE-PAH) is the leading cause of CTD-associated PAH (CTD-PAH) in China, accounting
137 for approximately 50% of the cases⁸. SLE-PAH shows very different outcomes from
138 SSc-PAH and other types of pulmonary hypertension⁹⁻¹¹, probably because of the
139 remarkable inflammatory nature of SLE-PAH. However, whether the evolving diagnostic
140 and treatment strategies benefit patients with SLE-PAH in a real-world setting remains
141 unclear.

142 Therefore, we conducted this multi-center prospective cohort study to explore changes in

143 the clinical characteristics, initial treatment strategy, treatment goal achievement, and
144 long-term survival of patients with SLE-PAH over the past decade. We also discuss
145 possible reasons for the improvement in survival and describe the challenges that remain in
146 the disease management of SLE-PAH.

147

148 **Methods**

149 **Study design**

150 The Chinese SLE Treatment and Research Group (CSTAR) PAH cohort is a nationwide
151 multi-center prospective cohort established in 2006, involving 21 qualified CTD-associated
152 PAH referral centers (Supplement Table 1) in China^{12, 13}. Ethical approval was granted by
153 by the Institutional Review Board of Peking Union Medical College Hospital (PUMCH)
154 (JS-2038). All patients in the cohort met the 1997 American College of Rheumatology
155 classification¹⁴ or the 2012 Systemic Lupus International Collaborating Clinics
156 classification¹⁵ for SLE. PAH was defined as a resting mean pulmonary arterial pressure
157 (mPAP) of ≥ 25 mmHg, pulmonary arterial wedge pressure of ≤ 15 mmHg, and pulmonary
158 vascular resistance (PVR) of >3 Wood units (WU) obtained by right heart catheterisation
159 (RHC). Patients with SLE-PAH diagnosed between 1 June 2011, and 31 May 2021, were
160 enrolled in the study. Patients with idiopathic PAH (IPAH) were consecutively recruited
161 from Beijing Chaoyang Hospital as the control group during the same period to
162 simultaneously describe the baseline characteristics and survival of patients with SLE-PAH.
163 Patients who did not fulfil the hemodynamic definition of pre-capillary pulmonary

164 hypertension and those associated with conditions such as human immunodeficiency virus
165 infection, portal hypertension, congenital heart disease, heart failure with reduced ejection
166 fraction, severe lung disease, or pulmonary embolism were excluded. Severe lung disease
167 was defined as a total lung capacity <70% of the predicted value or signs of extensive
168 pulmonary fibrosis on high-resolution chest computed tomography¹⁶. Eligible patients with
169 SLE-PAH were divided into cohorts A and B according to the date of RHC diagnosis.
170 Cohort A was recruited from 1 June 2011, to 31 May 2016, and cohort B underwent RHC
171 from 1 June 2016, to 31 May 2021.

172 **Data collection**

173 Baseline was defined as the time of RHC diagnosis. The following baseline variables were
174 selected: age; sex; disease duration from diagnosis of SLE; onset symptoms of PAH;
175 laboratory results, including serum chemistry panel and N-terminal pro-brain natriuretic
176 peptide (NT-proBNP) level; World Health Organization function class (WHO-FC);
177 6-minute walk distance (6-MWD); hemodynamic parameters; transthoracic
178 echocardiogram (TTE) findings; pulmonary function test (PFT); SLE Disease Activity
179 Index 2000 (SLEDAI-2K)¹⁷; and initial treatment regimens. Patients were also stratified
180 according to their baseline characteristics using variables selected from the risk assessment
181 strategy proposed in the 2022 ECS/ERS Guidelines¹⁸ (the parameters are shown in
182 Supplement Table 2). The low-, intermediate-, and high-risk groups were assigned scores
183 of 1, 2, and 3, respectively. The average score was then calculated for each patient and
184 rounded to the nearest integer. The primary endpoint was the all-cause mortality rate. The
185 secondary endpoint was reaching low-risk profile of PAH according to the four-stratum

186 risk assessment model COMPERA 2.0¹⁹. Moreover, follow-up data were collected at each
187 clinic visit to determine the achievement of lupus low-disease-activity state (LLDAS)²⁰,
188 which was determined if (1) SLE-DAI-2K ≤ 4 , with no activity in major organ systems; (2)
189 no new lupus disease activity compared with the last assessment; (3) physician global
190 assessment score ≤ 1 ; and (4) prednisolone (or equivalent) dose ≤ 7.5 mg daily with
191 well-tolerated maintenance doses of immunosuppressants.

192 **Statistical analysis**

193 Mean and standard deviation were used to describe the parametric data. The independent
194 *t*-test, analysis of variance (ANOVA), and Kruskal–Wallis *H* test were used to compare
195 continuous variables. The chi-squared test or Fisher’s exact test was used to compare
196 categorical variables. Statistical significance was set at $p < 0.05$. Survival analysis was
197 performed using the Kaplan–Meier method, and the log-rank test was used to compare
198 survival rates. Univariate and multivariate Cox regression analyses were used to identify
199 factors associated with all-cause mortality. Because reaching low-risk profile of PAH and
200 reaching LLDAS of SLE were time-dependent covariates, we applied time-dependent Cox
201 regression to avoid immortal time bias. Also, additional survival analyses using propensity
202 score matching for age, sex, and cardiac index (CI) were performed, and the proportion of
203 patients reaching a low-risk profile of PAH during follow-up was compared between
204 matched samples with different treatment regimens. SPSS version 26 (SPSS, Chicago, IL,
205 USA) was used for all statistical analyses.

206

207 **Results**

208 **Baseline clinical characteristics of patients with SLE-PAH and IPAH**

209 In total, 610 eligible patients with SLE-PAH were included in this study. Among these, 314
210 and 296 patients were included in cohorts A and B, respectively (Figure 1). In total, 104
211 eligible patients with IPAH were recruited for this study. Eighteen patients with SLE-PAH
212 (3.0%) were lost to follow-up and were excluded from the survival analysis.

213 Comparisons of the demographic and clinical characteristics between the SLE-PAH and
214 IPAH groups as well as between SLE-PAH cohorts A and B are shown in Table 1.
215 Compared with patients with IPAH, patients with SLE-PAH were younger (35.2 ± 9.9 vs.
216 41.8 ± 16.2 years, $p < 0.001$) and more predominantly female (98.5% vs. 69.2%, $p <$
217 0.001). Pulmonary hypertension in patients with SLE-PAH was less severe than that in
218 patients with IPAH, with fewer patients presenting with manifestations such as exertional
219 dyspnoea and syncope, better exercise capacity, lower NT-proBNP level, less right
220 ventricular dilation or reduced right ventricular function on echocardiography, and a better
221 overall hemodynamic profile.

222 The demographic characteristics and SLEDAI were similar between SLE-PAH cohorts A
223 and B. Patients in cohort B showed better performance in terms of 6-MWD (418.1 ± 132.5
224 vs. 388.9 ± 134.3 m, $p = 0.041$), a smaller mean right ventricular diameter (27.1 ± 7.1 vs.
225 29.9 ± 7.4 mm, $p = 0.011$), and less pericardial effusion (35.9% vs. 49.6%, $p = 0.002$) on
226 TTE as well as improved hemodynamics with a lower mPAP (44.3 ± 11.4 vs. 46.6 ± 11.8
227 mmHg, $p = 0.017$), lower PVR (8.9 ± 4.9 vs. 10.8 ± 5.3 WU, $p < 0.001$), and preserved CI

228 (3.0 ± 0.9 vs. 2.8 ± 0.9 L/min/m², p = 0.001). More patients in cohort B presented with a
229 low-risk profile than those in cohort A at baseline; however, the percentage of high-risk
230 patients was similar between the two cohorts (Table 1 and Supplement Figure 1).

231

232 **Initial treatment regimen of patients with SLE-PAH**

233 As shown in Table 2, most patients with SLE-PAH were treated with glucocorticoids
234 (99.0%) or immunosuppressants (93.6%). Compared to cohort A, more patients in cohort
235 B were treated with intensive immunosuppressive therapy (IIT) (79.7% vs 67.0%, p <
236 0.001), defined as one or more immunosuppressants, including cyclophosphamide (CYC),
237 calcineurin inhibitors (CNIs), and mycophenolate mofetil (MMF). More patients in cohort
238 B were treated with PAH-targeted therapy (90.9% vs. 67.2%, p < 0.001) and dual
239 PAH-targeted therapy (41.9% vs. 12.7%, p < 0.001). We then compared the initial
240 treatment regimen between cohort A and cohort B in different risk groups, and showed the
241 significant difference in low to intermediate group (Supplement Table 3). There was no
242 significant difference in the high-risk group between cohort A and B.

243

244 **Prognosis of patients with SLE-PAH and patients with IPAH**

245 The average follow-up time of patients with SLE-PAH was 4.6 ± 3.0 years. A total of 110
246 patients with SLE-PAH (18.0%) died during the follow-up. The 5- and 10-year survival
247 rates of SLE-PAH were 81.2% and 66.6%, respectively, which were significantly higher
248 than patient with IPAH (61.7% and 44.1%, respectively, p < 0.001, Figure 2A). Among

249 patients with SLE-PAH, the overall survival rate was significantly higher in cohort B than
250 in cohort A ($p = 0.006$, Figure 2B). The 1-, 3-, and 5-year survival rates were 93.2%,
251 85.0%, and 77.5%, respectively, in cohort A and 96.2%, 91.4%, and 88.1%, respectively,
252 in cohort B. When comparing survival between SLE-PAH cohorts A and B stratified into
253 different risk groups, an improvement in survival was observed in the low- and
254 intermediate-risk groups (5-year survival rate 81.7% vs. 89.5%, $p = 0.023$, Figure 2D) but
255 not in the high-risk group (5-year survival rate 35.4% vs. 69.5%, $p = 0.160$, Figure 2E).

256 During follow-up, 304 patients with SLE-PAH (66.1%) reached low-risk PAH profile and
257 287 (82.0%) patients reached LLDAS. Compared with cohort A, more patients in cohort B
258 reached low-risk profile of PAH (Figure 2C, $p < 0.001$). The median time of reaching
259 LLDAS was significantly shorter in cohort B compared with cohort A (11.5 ± 1.0 vs. 29.7
260 ± 2.4 , $p < 0.001$).

261

262 **Prognostic factors for patients with SLE-PAH**

263 Univariate analysis was used to identify prognostic factors for SLE-PAH. Baseline
264 characteristics, including PAH as an onset symptom of SLE, WHO-FC III–IV, reduced
265 6-MWD, elevated NT-proBNP concentration, elevated uric acid, elevated total bilirubin,
266 increased PVR, reduced CI, large right ventricular diameter, presence of pericardial
267 effusion, and diffusing capacity of the lung for carbon monoxide of $<45\%$ of the predicted
268 value were prognostic factors associated with all-cause mortality (Supplement Table 4).

269 As shown in Table 3, after adjusting for confounding factors, including age, sex, and CI,

270 reaching a low-risk profile of PAH was independently associated with a reduced risk of
271 death (hazard ratio [HR] 0.34, 95% confidence interval [CI] 0.15-0.79, $p = 0.012$).
272 LLDAS, a widely accepted treatment goal for SLE, was also favourably associated with
273 better survival (HR 0.33, 95% CI 0.14-0.82, $p = 0.016$) in multi-variant time-dependent
274 Cox regression.

275 To further explore the prognostic value of initial treatment regimens in patients with
276 SLE-PAH, we compared the rate of reaching low-risk profile of PAH between propensity
277 score-matched patients with SLE-PAH who were initially treated with and without IIT, as
278 well as between patients who received mono PAH-targeted therapy versus dual
279 PAH-targeted therapy. Notably, patients who were initially treated with IIT (Figure 3A, $p <$
280 0.001) and dual PAH-targeted therapy (Figure 3B, $p = 0.038$) were more likely to reach
281 low-risk profile of PAH during follow-up.

282

283 **Discussion**

284 In this multi-center prospective cohort study of patients with SLE-PAH, we compared
285 changes in baseline characteristics, initial treatment regimens, and overall survival over the
286 last decade. We also identified factors associated with prognosis. We found that more
287 patients were diagnosed at an earlier stage of PAH and were treated with IIT and
288 PAH-targeted therapies in the last five years. Survival rates for SLE-PAH have extensively
289 improved over the past decade. Notably, achieving low-risk profile for PAH and LLDAS
290 for SLE were identified as independent predictors of survival in patients with SLE-PAH.

291 Patients treated with IIT and dual PAH-targeted therapy were more likely to achieve a low
292 risk profile for PAH during follow-up.

293 Previous studies have suggested that patients with SLE-PAH have much better short-term
294 outcomes than those with IPAH or SSc-PAH. Chung et al.⁹ compared the clinical
295 characteristics, hemodynamics, and 1-year survival of patients with SLE-PAH (n = 110)
296 with those of patients with SSc-PAH (n = 399) and IPAH (n = 1196) in the Registry to
297 Evaluate Early and Long-term Pulmonary Arterial Hypertension Disease Management
298 (REVEAL registry). They showed that patients with SLE-PAH had better hemodynamics
299 and 1-year survival (94% vs. 93%) than those with IPAH. In addition, patients with
300 SLE-PAH had a significantly higher 1-year survival rate than those with SSc-PAH (94% vs.
301 82%; p = 0.0009). Our results showed that the long-term survival of patients with
302 SLE-PAH was significantly better than patients with IPAH (5-year survival 81.2% vs.
303 61.7%, p < 0.001; 10-year survival 66.6% vs. 44.1%, p < 0.001). A Favourable trend in
304 overall survival has also been observed in patients with SLE-PAH over the last decade,
305 consistent with IPAH⁴ and SSc-PAH⁷.

306 Consistent with previous studies that emphasised the importance of goal-oriented treatment
307 of PAH^{12, 21}, we proved that reaching a low-risk profile of PAH, which was recommended
308 as a treatment goal during follow-up by the 2022 ECS/ERS Guidelines¹⁸. was a protective
309 factor for survival in SLE-PAH. Moreover, SLE-PAH is more complicated than other
310 forms of PAH in terms of the underlying autoimmunity and inflammation at its onset and
311 progression. Therefore, achieving the treatment goals for SLE should be emphasised.
312 LLDAS is an attainable treatment target for SLE, based on the principle of an “acceptable”

313 level of disease activity in patients treated with low-dose glucocorticoids and stable
314 immunosuppressive treatments. Achieving LLDAS was proven to be associated with a
315 lower frequency of SLE flares in a previous large cohort study as well as a decreased
316 probability of organ damage, better quality of life, and reduced mortality²². For the first
317 time, our study demonstrated that achieving LLDAS was markedly associated with
318 reduced mortality risk in patients with SLE-PAH. A higher proportion of patients in cohort
319 B achieved a low-risk profile of PAH and reached the LLDAS of SLE during follow-up,
320 which partially explains the improvement in survival in the last decade. Therefore, a
321 goal-oriented dual treat-to-target strategy is recommended for the management of
322 SLE-PAH to achieve better long-term outcomes.

323 Timely and effective application of PAH-targeted therapy and immunosuppressive therapy
324 contribute to the achievement of treatment goals. Upfront dual PAH-targeted therapy was
325 recommended for the initial treatment of PAH based on the improvements in patient
326 outcomes observed in the AMBITION (A Study of First-Line Ambrisentan and Tadalafil
327 Combination Therapy in Subjects with Pulmonary Arterial Hypertension) trial²³. Upfront
328 dual PAH-targeted therapy was favourably associated with a low-risk state of PAH in our
329 study. Besides PAH-targeted medication, our study also showed that more patients were
330 able to achieve the PAH treatment goal when treated with IIT as part of the baseline
331 treatment. Previous studies have demonstrated the important role of autoimmune processes
332 in PAH development, especially in the early phase before right heart reconstruction⁶.
333 Several retrospective studies have examined the use of immunosuppressive agents in
334 CTD-PAH, suggesting that immunosuppressants are associated with improvements in

335 exercise capacity, hemodynamics, and long-term survival⁶. Responders to
336 immunosuppressive therapy were mostly in the early stage of PAH²⁴. Our results indicate
337 that early initiation of IIT may reverse PAH progression and help achieve a low-risk state.
338 Thus, IIT should be considered to have the same importance as PAH-targeted therapy in
339 the management of patients with SLE-PAH. Apart from traditional immunosuppressive
340 drugs, biological agents, including rituximab, belimumab, telitacicept, tocilizumab, and
341 JAK inhibitors, for which indications are increasing in patients with SLE with different
342 organ involvement, may also have potential therapeutic benefits for SLE-PAH⁶. A
343 randomised clinical trial of rituximab demonstrated that patients with SSc-PAH and
344 elevated cytokine levels showed improvement in both the 6-MWD and PVR at 24 weeks²⁵,
345 ²⁶. Therefore, we believe that it is especially worthwhile to explore the treatment effects in
346 patients with SLE-PAH, considering that this condition has more prominent inflammation
347 than SSc-PAH.

348 Early detection is also essential to achieve treatment goals. In the present study, patients in
349 cohort B had better clinical and hemodynamic states, indicating that more patients were
350 diagnosed and treated at an early stage of PAH. Interestingly, a recent multi-center cohort
351 study conducted in China that recruited patients from cardiovascular centers showed that
352 the overall survival of patients with CTD-PAH was comparable to that of patients with
353 IPAH. Although SSc-PAH accounted for a very small proportion (7.1%) of this cohort, the
354 5-year survival rate was still much worse than that of patients in the present study
355 (approximately 70% vs. 81.2%)³. This may be partly related to the fact that patients
356 referred to cardiovascular centers primarily had symptomatic PAH. Since PAH develops

357 occultly in patients with SLE in most cases, clinical factors and serological biomarkers are
358 studied to identify SLE patients at risk and allow early detection of PAH. Previous studies
359 have suggested that Raynaud's phenomenon, serositis, hyperuricaemia, anti-RNP,
360 anti-SSA/SSB, and antiphospholipid antibodies are risk factors for SLE-PAH²⁷⁻²⁹. Recently,
361 a risk-stratification model incorporating routine clinical parameters to predict the risk of
362 PAH in patients with SLE was developed²⁹. Genetic studies have shown that
363 HLA-DQA1*03:02 is a genetic risk of SLE-PAH³⁰. Patients with the above risk factors or
364 those deemed to be high risk by the algorithm were recommended annual TTE screening to
365 detect signs of pulmonary hypertension.

366 This study has some limitations. Firstly, the long-term survival of patients with high-risk
367 group has a tendency of improvement, however, without statistical significance, which
368 could be partly explain by the limited number of patients in this group. Future study is
369 needed focusing the high-risk group of patients and studying the prognostic value of dual
370 treat-to-target strategy. Secondly, for the nature of a real-world study, the prognostic value
371 of treatment was evaluated by using risk-matching analysis. To further study the treatment
372 strategy of SLE-PAH, randomized clinical trials are needed. Finally, as disease
373 characteristics and prognosis of SLE-PAH may vary among different populations, we
374 called for global cohort study of SLE-PAH to expand the research populations and further
375 explore the possible racial difference of this disease.

376 Taken together, this is the largest prognostic study of SLE-PAH, based on the CSTAR-PAH
377 cohort. Our findings, for the first time, illustrated the progress made in the early detection
378 and management of patients with SLE-PAH over the last decade, which led to significant

379 improvements in survival. We emphasised that meeting the treatment goals of both SLE
380 and PAH were independently associated with reduced mortality, which support the dual
381 treat-to-target strategy in SLE-PAH. Initial use of IIT, together with PAH-targeted
382 combination therapy contributed to the early achievement of PAH treatment goals, which
383 are recommended to implement in the real clinical practice of SLE-PAH.

384

385 **Acknowledgements**

386 The authors thank all investigators, study coordinators, and patients who participated in the
387 study. Jiuliang Zhao, Qian Wang, Mengtao Li, and Xiaofeng Zeng conceived and designed
388 the study. Xingbei Dong, Junyan Qian, Wei Wei, Miaoja Zhang, Xiao Zhang, Xiaofei Shi,
389 Yisha Li, Xiaoping Hong, Qiang Shu, Shuhong Chi, Xin Dong, Ping Zhu, Rong Zhang,
390 Zhuoli Zhang, Hongfeng Zhang, Xinwang Duan, Jing Xue, Shuhong Zhou, Hongbin Li,
391 Dan Chen, Junwei Zhang, Zhuang Tian, Yongtai Liu collected patient data. Xingbei Dong,
392 Junyan Qian, Jiuliang Zhao and Yanhong Wang analyzed data. All authors interpreted the
393 results. Xingbei Dong, Jiuliang Zhao, Junyan Qian, Qian Wang, and Mengtao Li wrote the
394 manuscript. All authors critically reviewed and revised the manuscript and approved the
395 final version for publication. All authors had full access to the study data and final
396 responsibility for the decision to submit for publication.

397 **Source of fundings**

398 This study was supported by the Chinese National Key Technology R&D Program,
399 Ministry of Science and Technology (2021YFC2501300, 2017YFC0907600), Beijing

400 Municipal Science & Technology Commission (No. Z201100005520022, 23, 25-27),
401 CAMS Innovation Fund for Medical Sciences (CIFMS) (2021-I2M-1-005,
402 2019-12M-2-008), and National High Level Hospital Clinical Research Funding
403 (2022-PUMCH-B-013, C-002, D-009, A-228). The sponsors of the study were not
404 involved in the study design, data collection, data analysis, interpretation of data, writing
405 of the report, or decision to submit the paper for publication.

406 **Disclosures**

407 The authors declare no conflict of interest.

408 **References**

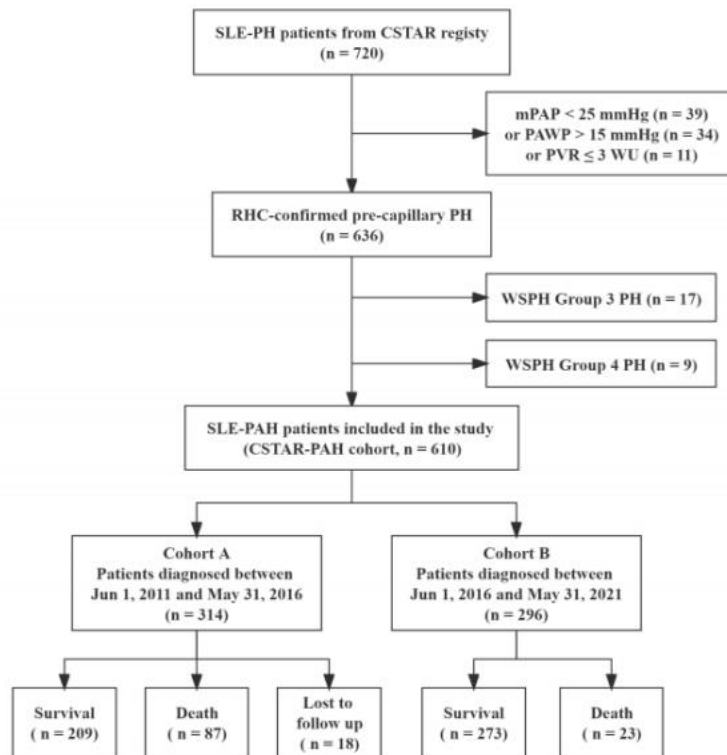
- 409 1. Hassoun PM. Pulmonary Arterial Hypertension. *N Engl J Med*. 2021;385:2361-2376.
- 410 2. Badesch DB, Raskob GE, Elliott CG, Krichman AM, Farber HW, Frost AE, Barst RJ,
411 Benza RL, Liou TG, Turner M, et al. Pulmonary arterial hypertension: baseline
412 characteristics from the REVEAL Registry. *Chest*. 2010;137:376-87.
- 413 3. Quan R, Zhang G, Yu Z, Zhang C, Yang Z, Tian H, Yang Y, Wu W, Chen Y, Liu Y, et al.
414 Characteristics, goal-oriented treatments and survival of pulmonary arterial hypertension in
415 China: Insights from a national multicentre prospective registry. *Respirology*.
416 2022;27:517-528.
- 417 4. Hoepfer MM, Pausch C, Grunig E, Staehler G, Huscher D, Pittrow D, Olsson KM,
418 Vizza CD, Gall H, Distler O, et al. Temporal trends in pulmonary arterial hypertension:
419 results from the COMPERA registry. *Eur Respir J*. 2022;59.
- 420 5. Aithala R, Alex AG and Danda D. Pulmonary hypertension in connective tissue
421 diseases: an update. *Int J Rheum Dis*. 2017;20:5-24.
- 422 6. Zhao J, Wang Q, Deng X, Qian J, Tian Z, Liu Y, Li M and Zeng X. The treatment
423 strategy of connective tissue disease associated pulmonary arterial hypertension: Evolving
424 into the future. *Pharmacol Ther*. 2022;239:108192.
- 425 7. Hassan HJ, Naranjo M, Ayoub N, Houston T, Hsu S, Balasubramanian A, Simpson CE,
426 Damico RL, Mathai SC, Kolb TM, et al. Improved Survival for Patients with Systemic
427 Sclerosis-associated Pulmonary Arterial Hypertension: The Johns Hopkins Registry. *Am J*
428 *Respir Crit Care Med*. 2022.
- 429 8. Hao YJ, Jiang X, Zhou W, Wang Y, Gao L, Wang Y, Li GT, Hong T, Huo Y, Jing ZC, et

- 430 al. Connective tissue disease-associated pulmonary arterial hypertension in Chinese
431 patients. *Eur Respir J*. 2014;44:963-72.
- 432 9. Chung L, Liu J, Parsons L, Hassoun PM, McGoon M, Badesch DB, Miller DP, Nicolls
433 MR and Zamanian RT. Characterization of connective tissue disease-associated pulmonary
434 arterial hypertension from REVEAL: identifying systemic sclerosis as a unique phenotype.
435 *Chest*. 2010;138:1383-94.
- 436 10. Hachulla E, Jais X, Cinquetti G, Clerson P, Rottat L, Launay D, Cottin V, Habib G,
437 Prevot G, Chabanne C, et al. Pulmonary Arterial Hypertension Associated With Systemic
438 Lupus Erythematosus: Results From the French Pulmonary Hypertension Registry. *Chest*.
439 2018;153:143-151.
- 440 11. Zhao J, Wang Q, Liu Y, Tian Z, Guo X, Wang H, Lai J, Huang C, Yang X, Li M, et al.
441 Clinical characteristics and survival of pulmonary arterial hypertension associated with
442 three major connective tissue diseases: A cohort study in China. *Int J Cardiol*.
443 2017;236:432-437.
- 444 12. Qian J, Li M, Zhang X, Wang Q, Zhao J, Tian Z, Wei W, Zuo X, Zhang M, Zhu P, et al.
445 Long-term prognosis of patients with systemic lupus erythematosus-associated pulmonary
446 arterial hypertension: CSTAR-PAH cohort study. *European Respiratory Journal*. 2019;53.
- 447 13. Wang Q, Qian J, Li M, Zhang X, Wei W, Zuo X, Zhu P, Ye S, Zhang W, Zheng Y, et al.
448 Risk assessment in systemic lupus erythematosus-associated pulmonary arterial
449 hypertension: CSTAR-PAH cohort study. *Ther Adv Chronic Dis*.
450 2022;13:20406223221112528.
- 451 14. Tan EM, Cohen AS, Fries JF, Masi AT, McShane DJ, Rothfield NF, Schaller JG, Talal

- 452 N and Winchester RJ. The 1982 revised criteria for the classification of systemic lupus
453 erythematosus. *Arthritis Rheum.* 1982;25:1271-7.
- 454 15. Petri M, Orbai AM, Alarcon GS, Gordon C, Merrill JT, Fortin PR, Bruce IN, Isenberg
455 D, Wallace DJ, Nived O, et al. Derivation and validation of the Systemic Lupus
456 International Collaborating Clinics classification criteria for systemic lupus erythematosus.
457 *Arthritis Rheum.* 2012;64:2677-86.
- 458 16. Goh NS, Desai SR, Veeraraghavan S, Hansell DM, Copley SJ, Maher TM, Corte TJ,
459 Sander CR, Ratoff J, Devaraj A, et al. Interstitial lung disease in systemic sclerosis: a
460 simple staging system. *Am J Respir Crit Care Med.* 2008;177:1248-54.
- 461 17. Ibañez D, Gladman DD and Urowitz MB. Adjusted mean Systemic Lupus
462 Erythematosus Disease Activity Index-2K is a predictor of outcome in SLE. *J Rheumatol.*
463 2005;32:824-7.
- 464 18. Humbert M, Kovacs G, Hoeper MM, Badagliacca R, Berger RMF, Brida M, Carlsen J,
465 Coats AJS, Escribano-Subias P, Ferrari P, et al. 2022 ESC/ERS Guidelines for the
466 diagnosis and treatment of pulmonary hypertension. *Eur Heart J.* 2022;43:3618-3731.
- 467 19. Hoeper MM, Pausch C, Olsson KM, Huscher D, Pittrow D, Grunig E, Staehler G,
468 Vizza CD, Gall H, Distler O, et al. COMPERA 2.0: a refined four-stratum risk assessment
469 model for pulmonary arterial hypertension. *Eur Respir J.* 2022;60.
- 470 20. Franklyn K, Lau CS, Navarra SV, Louthrenoo W, Lateef A, Hamijoyo L, Wahono CS,
471 Chen SL, Jin O, Morton S, et al. Definition and initial validation of a Lupus Low Disease
472 Activity State (LLDAS). *Ann Rheum Dis.* 2016;75:1615-21.
- 473 21. Kylhammar D, Kjellstrom B, Hjalmarsson C, Jansson K, Nisell M, Soderberg S,

- 474 Wikstrom G and Radegran G. A comprehensive risk stratification at early follow-up
475 determines prognosis in pulmonary arterial hypertension. *Eur Heart J.* 2018;39:4175-4181.
- 476 22. Samoes B, Zen M, Abelha-Aleixo J, Gatto M and Doria A. Caveats and pitfalls in
477 defining low disease activity in systemic lupus erythematosus. *Autoimmun Rev.*
478 2022;21:103165.
- 479 23. Galie N, Barbera JA, Frost AE, Ghofrani HA, Hoeper MM, McLaughlin VV, Peacock
480 AJ, Simonneau G, Vachiery JL, Grunig E, et al. Initial Use of Ambrisentan plus Tadalafil in
481 Pulmonary Arterial Hypertension. *N Engl J Med.* 2015;373:834-44.
- 482 24. Ding Y, Qian J, Zhang S, Xu D, Leng X, Zhao J, Wang Q, Zhang W, Tian X, Li M, et
483 al. Immunosuppressive therapy in patients with connective tissue disease-associated
484 pulmonary arterial hypertension: A systematic review. *Int J Rheum Dis.* 2022.
- 485 25. Zamanian RT, Badesch D, Chung L, Domsic RT, Medsger T, Pinckney A,
486 Keyes-Elstein L, D'Aveta C, Spychala M, White RJ, et al. Safety and Efficacy of B-Cell
487 Depletion with Rituximab for the Treatment of Systemic Sclerosis-associated Pulmonary
488 Arterial Hypertension: A Multicenter, Double-Blind, Randomized, Placebo-controlled Trial.
489 *Am J Respir Crit Care Med.* 2021;204:209-221.
- 490 26. Zhang Y and Michelakis ED. A Phase-2 NIH-sponsored Randomized Clinical Trial of
491 Rituximab in Scleroderma-associated Pulmonary Arterial Hypertension Did Not Reach
492 Significance for Its Endpoints: End of Story? Not So Fast! *Am J Respir Crit Care Med.*
493 2021;204:123-125.
- 494 27. Kim JS, Kim D, Joo YB, Won S, Lee J, Shin J and Bae SC. Factors associated with
495 development and mortality of pulmonary hypertension in systemic lupus erythematosus

- 496 patients. *Lupus*. 2018;27:1769-1777.
- 497 28. Zhang N, Li M, Qian J, Wang Q, Zhao J, Yang Z, Tian Z, Zhang X, Zuo X, Zhang M,
498 et al. Pulmonary arterial hypertension in systemic lupus erythematosus based on a CSTAR-
499 PAH study: Baseline characteristics and risk factors. *International Journal of Rheumatic*
500 *Diseases*. 2019;22:921-928.
- 501 29. Qu J, Li M, Wang Y, Duan X, Luo H, Zhao C, Zhan F, Wu Z, Li H, Yang M, et al.
502 Predicting Risk of Pulmonary Arterial Hypertension in Systemic Lupus Erythematosus:
503 CSTAR Cohort Study. *Arthritis Rheumatol*. 2021.
- 504 30. Qian J, Chen Y, Yang X, Wang Q, Zhao J, Deng X, Ding Y, Li S, Liu Y, Tian Z, et al.
505 Association study identified HLA-DQA1 as a novel genetic risk of systemic lupus
506 erythematosus-associated pulmonary arterial hypertension. *Arthritis Rheumatol*. 2023.



507

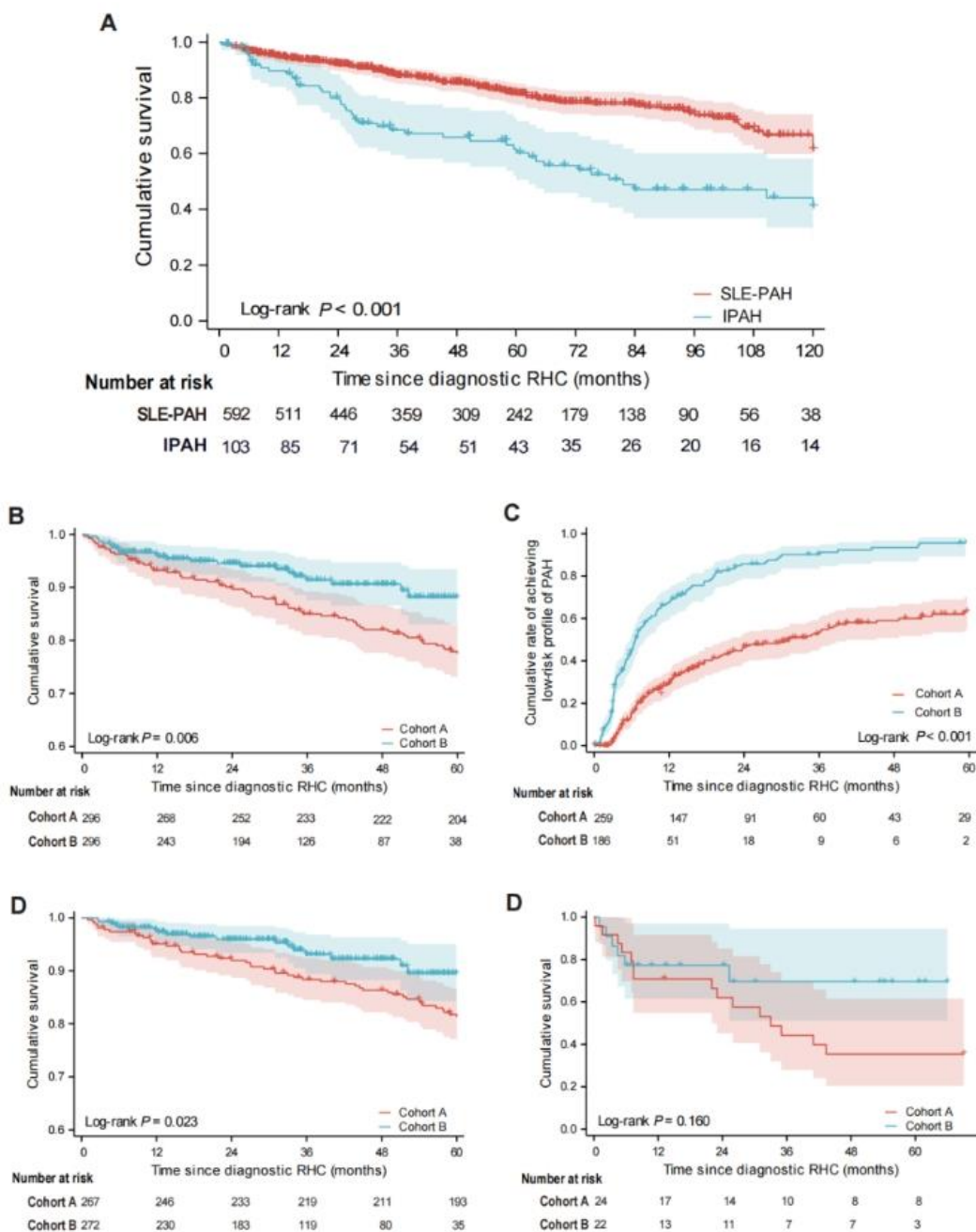
508 **Figure 1. Study flow diagram.** SLE, systemic lupus erythematosus; PH, pulmonary

509 hypertension; CSTAR, Chinese SLE Treatment and Research Group; mPAP, mean

510 pulmonary arterial pressure; PAWP, pulmonary arterial wedge pressure; PVR, pulmonary

511 vascular resistance; WU, wood units; RHC, right heart catheterization; WSPH, World

512 Symposium on Pulmonary Hypertension; PAH, pulmonary arterial hypertension.



513

514

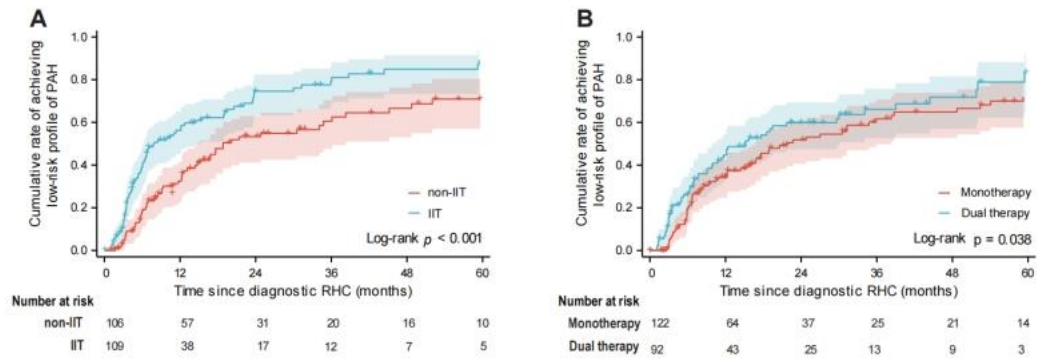
515 **Figure 2. Kaplan–Meier survival analysis.** (A) Comparison of 10-year survival between

516 patients with SLE-PAH and patients with IPAH. (B) Comparison of 5-year survival

517 between cohorts A and B. Comparison of 5-year survival between patients with SLE-PAH

518 in (C) Comparison of rate of achieving low-risk profile of PAH during follow-up between

519 cohorts A and B. (D) Comparison of 5-year survival between cohort A and B in low and
520 intermediate-risk groups and (E) in high-risk group. SLE, systemic lupus erythematosus;
521 PAH, pulmonary arterial hypertension; IPAH, idiopathic pulmonary arterial hypertension.



522
523

524 **Figure 3. Comparison of rate of achieving low-risk profile of PAH during follow-up**
525 **between propensity score-matched groups. (A) Comparison with and without IIT and (B)**
526 **with mono- versus dual PAH-targeted therapy. PAH, pulmonary arterial hypertension; IIT,**
527 **intensive immunosuppressive therapy.**

Table 1. Baseline characteristics of patients with SLE-PAH and patients with IPAH

	SLE-PAH vs. IPAH			Cohort A vs. Cohort B		
	SLE-PAH (n=610)	IPAH (n=104)	p-value	cohort A (n=314)	cohort B (n=296)	p-value
Age at enrolment (years)	35.2±9.9	41.8±16.2	<0.001	34.8±9.9	35.5±10.0	0.431
Female	601 (98.5%)	72 (69.2%)	<0.001	312 (99.4%)	289 (97.6%)	0.098
Duration since onset of SLE (years)	4.4±5.5	NA	NA	4.3±5.5	4.5±5.5	0.790
Symptoms						
Exertional dyspnoea	497 (81.5%)	82 (97.6%)	<0.001	263 (83.8%)	234 (79.1%)	0.145
Syncope	57 (9.3%)	19 (18.4%)	0.007	25 (8.0%)	32 (10.8%)	0.266
Functional state						
WHO FC III-IV	254 (47.1%)	37 (35.9%)	0.040	133 (48.7%)	121 (45.5%)	0.490
6-MWD (m)	400.5±134.2	350.5±131.2	0.002	388.9±134.3	418.1±132.5	0.041
Laboratory findings						

NT-proBNP (ng/L)	1923.2±3059.7	2715.3±2839.2	0.027	1862.8±2640.6	1974.3±3378.8	0.711
Uric acid (μmol/L)	376.4±143.6	442.7±151.7	<0.001	366.5±127.7	388.7±160.5	0.108
Total Bilirubin (μmol/L)	13.4±16.1	19.8±12.5	<0.001	12.7±8.9	14.2±21.3	0.290
Hemodynamic						
mPAP (mmHg)	45.5±11.7	56.3±16.9	<0.001	46.6±11.8	44.3±11.4	0.017
PAWP (mmHg)	8.4±3.5	9.2±3.4	0.037	7.8±3.6	9.0±3.4	<0.001
PVR (WU)	9.8±5.2	15.0±9.3	<0.001	10.8±5.3	8.9±4.9	<0.001
RAP (mmHg)	6.5±4.1	8.3±6.4	0.055	6.3±4.2	6.7±3.9	0.306
CI (L/min·m ²)	2.9±0.9	2.2±0.8	<0.001	2.8±0.9	3.0±0.9	0.001
Echocardiography						
RV diameter (mm)	29.1±7.4	33.3±6.6	0.078	29.9±7.4	27.7±7.1	0.011
TRV (m/s)	4.1±0.7	4.4±0.6	<0.001	4.1±0.6	4.0±0.7	0.013
Estimated PASP (mmHg)	75.6±21.0	90.2±21.7	<0.001	77.8±20.6	73.0±21.2	0.008

Pericardial effusion	229 (43.1%)	29 (36.3%)	0.275	139 (49.6%)	90 (35.9%)	0.002
Pulmonary function test						
FVC, (% predicted)	83.3±14.6	95.1±16.0	<0.001	80.7±13.3	90.9±15.4	<0.001
TLC, (% predicted)	89.1±11.9	96.2±12.3	<0.001	88.5±11.0	90.6±14.2	0.292
DLCO, (% predicted)	60.4±15.4	63.2±24.3	0.297	61.0±15.7	59.1±14.6	0.453
SLEDAI (points)	5.9±5.8	NA	NA	6.0±5.5	5.8±6.2	0.557
Risk stratification						
Low risk	262 (43.4%)	14 (13.6%)	<0.001	120 (38.8%)	142 (48.3%)	0.021
Intermediated risk	293 (48.6%)	72 (69.9%)	<0.001	163 (52.8%)	130 (44.2%)	0.042
High risk	48 (8.0%)	17 (16.5%)	0.008	26 (8.4%)	22 (7.5%)	0.764

528 * SLE, systemic lupus erythematosus; PAH, pulmonary arterial hypertension; IPAH, idiopathic pulmonary arterial hypertension; BMI, body mass
529 index; WHO, World Health Organization; FC, function class; 6-MWD, 6-minute walk distance; NT-proBNP, N-terminal prohormone brain
530 natriuretic peptide; mPAP, mean pulmonary arterial pressure; PAWP, pulmonary arterial wedge pressure; PVR, pulmonary vascular resistance; RAP,
531 right atrial pressure; CI, cardiac index; RV, right ventricle; TRV, tricuspid regurgitant velocity; PASP, pulmonary arterial systolic pressure; FVC,

532 forced vital capacity; TLC, total lung capacity; DLCO, diffusing capacity for carbon monoxide; SLEDAI, SLE Disease Activity Index; NA, not
533 available.

Table 2. Initial treatment regimen for patients with SLE-PAH

	SLE-PAH (n=610)	cohort A (n=314)	cohort B (n=296)	p-value
Glucocorticoid	595 (99.0%)	308 (99.7%)	287 (98.3%)	0.113
* High dose	192 (31.9%)	103 (33.3%)	89 (30.5%)	0.484
Low to medium dose	403 (67.1%)	205 (66.3%)	198 (67.8%)	0.729
Immunosuppressants	569 (93.6%)	286 (91.7%)	283 (95.6%)	0.067
† Intensive immunosuppressive therapy	445 (73.2%)	209 (67.0%)	236 (79.7%)	<0.001
PAH-targeted medication	480 (78.7%)	211 (67.2%)	269 (90.9%)	<0.001
Dual combination therapy	164 (26.9%)	40 (12.7%)	124 (41.9%)	<0.001
Triple combination therapy	12 (2.0%)	3 (1.0%)	9 (3.0%)	0.081
ERA	309 (50.7%)	115 (36.6%)	194 (65.5%)	<0.001
PDE5i/ sGC	327 (53.6%)	127 (40.4%)	200 (67.6%)	<0.001

PCA	29 (4.8%)	12 (3.8%)	17 (5.7%)	0.342
-----	-----------	-----------	-----------	-------

534 * High dose glucocorticoid was defined as prednisone (or equivalent) dose ≥ 1 mg/kg/d.

535 †Intensive immunosuppressive therapy was defined as one or more immunosuppressants, including cyclophosphamide, calcineurin
536 inhibitors, and mycophenolate mofetil.

537 ‡SLE, systemic lupus erythematosus; PAH, pulmonary arterial hypertension; ERA, endothelin receptor antagonist; PDE5i,
538 phosphodiesterase-5 inhibitor; sGCS, soluble guanylate cyclase stimulator; PCA, prostacyclin analogue.

539 **Table 3. Predictors of all-cause mortality in patients with SLE-PAH**

	Univariable analysis		Multivariable analysis	
	HR (95%CI)	p-value	HR (95%CI)	p-value
*Reaching low-risk profile of PAH	0.22 (0.13-0.37)	<0.001	0.34 (0.15-0.79)	0.012
*Reaching LLDAS of SLE	0.22 (0.10-0.47)	<0.001	0.33 (0.14-0.82)	0.016
Age at enrolment (per year)	1.02 (1.00-1.04)	0.060	1.04 (0.99-1.08)	0.084
Female	0.54 (0.13-2.18)	0.383	0.11 (0.01-0.91)	0.040
CI < 2.0 L/min·m ²	3.74 (2.44-5.73)	<0.001	2.08 (0.96-4.54)	0.064

540 * Time-dependent covariates

541 † SLE, systemic lupus erythematosus; PAH, pulmonary arterial hypertension; LLDAS, low lupus disease activity state;

542 CI, cardiac index