

1 **Heart size disparity drives sex-specific response to cardiac resynchronization**  
2 **therapy: a post-hoc analysis of the MORE-MPP CRT trial**

3  
4 **Authors:**

5  
6 Nadeev Wijesuriya<sup>1,2</sup>, Vishal Mehta<sup>1,2</sup>, Felicity De Vere<sup>1,2</sup>, Sandra Howell<sup>1,2</sup>, Steven  
7 A Niederer<sup>1,3</sup>, Haran Burri<sup>4</sup>, Johannes Sperzel<sup>5</sup>, Leonardo Calo<sup>6</sup>, Bernard Thibault<sup>7</sup>,  
8 Wenjiao Lin<sup>8</sup>, Kwangdeok Lee<sup>8</sup>, Andrea Grammatico<sup>8</sup>, Niraj Varma<sup>9</sup>, Marianne  
9 Gwechenberger<sup>10</sup>, Christophe Leclercq<sup>11</sup>, Christopher A Rinaldi<sup>1,2,9</sup>

10  
11 **Affiliations:**

12  
13 <sup>1</sup> King's College London, UK

14 <sup>2</sup> Guy's and St Thomas's NHS Foundation Trust, London, UK

15 <sup>3</sup> National Heart and Lung Institute, Imperial College London, UK

16 <sup>4</sup> University Hospital of Geneva, Geneva, Switzerland

17 <sup>5</sup> Kerckhoff - Klinik Heart Center, Bad Nauheim, Germany

18 <sup>6</sup> Casilino Policlinico, Rome, Italy

19 <sup>7</sup> Montreal Heart Institute, Montreal, QC, Canada

20 <sup>8</sup> Abbott, Plano, TX, United States

21 <sup>9</sup> Cleveland Clinic, London, UK

22 <sup>10</sup> Medical University of Vienna, Austria

23 <sup>11</sup> CHRU Pontchaillou, Rennes, France

24  
25  
26 **Conflict of Interests / Funding Statement:**

27  
28 The NW, VM, FdV, and SH are supported by the Wellcome/EPSRC Centre for  
29 Medical Engineering (WT203148/Z/16/Z). NW receives fellowship funding from the  
30 British Heart Foundation (FS/CRTF/22/24362). SAN acknowledges support from the  
31 UK Engineering and Physical Sciences Research Council (EP/M012492/1,  
32 NS/A000049/1, and EP/P01268X/1), the British Heart Foundation  
33 (PG/15/91/31812, PG/13/37/30280, SP/18/6/33805), US National  
34 Institutes of Health (NIH R01-HL152256), European Research Council (ERC  
35 PREDICT-HF 864055) and Kings Health Partners London National Institute for  
36 Health Research (NIHR) Biomedical Research Centre. BT receives research support  
37 from Abbott. MG received lecture and/or consultation fees from Abbott, Medtronic,  
38 Boston Scientific, Biotronik and MicroPort. CL receives speaker fees from Medtronic,  
39 Abbott and Biotronik. CAR receives research funding and/or consultation fees from  
40 Abbott, Medtronic, Boston Scientific, Spectranetics, EBR Systems and MicroPort  
41 outside of the submitted work.

42  
43 Corresponding author

44 Dr Nadeev Wijesuriya

45 School of Biomedical Engineering and Imaging Sciences, Rayne Institute, 4th Floor

46 Lambeth Wing, St Thomas's Hospital, Westminster Bridge Road, London SE1 7EH

47 Email: [nadeev.wijesuriya@kcl.ac.uk](mailto:nadeev.wijesuriya@kcl.ac.uk)

48  
49 **NOTE: This preprint reports new research that has not been certified by peer review and should not be used to guide clinical practice.**

50  
51  
52  
53  
54  
55  
56  
57  
58  
59  
60  
61  
62  
63  
64  
65  
66  
67  
68  
69  
70  
71  
72  
73  
74  
75  
76  
77  
78  
79  
80  
81  
82  
83

## **Abstract**

*Background:* Studies have reported that female sex predicts superior cardiac resynchronization therapy (CRT) response. One theory is that this association is related to smaller female heart size, thus increased “relative dyssynchrony” at given QRS durations (QRSd).

*Objective:* To investigate the mechanisms of sex-specific CRT response relating to heart size, relative dyssynchrony, cardiomyopathy type, QRS morphology, and other patient characteristics.

*Methods:* A post-hoc analysis of the MORE-CRT MPP trial (n=3739, 28% female), with a sub-group analysis of patients with non-ischaemic cardiomyopathy (NICM) and left bundle branch block (LBBB) (n=1308, 41% female) to control for confounding characteristics. A multivariable analysis examined predictors of response to 6 months of conventional CRT, including sex and relative dyssynchrony, measured by QRSd/LVEDV (left ventricular end-diastolic volume).

*Results:* Females had a higher CRT response rate than males (70.1% vs. 56.8%,  $p<0.0001$ ). *Subgroup analysis:* Regression analysis of the NICM LBBB subgroup identified QRSd/LVEDV, but not sex, as a modifier of CRT response ( $p<0.0039$ ). QRSd/LVEDV was significantly higher in females (0.919) versus males (0.708,  $p<0.001$ ). CRT response was 78% for female patients with QRSd/LVEDV>median value, compared to 68% < median value ( $p=0.012$ ). Association between CRT response and QRSd/LVEDV was strongest at QRSd<150ms.

*Conclusions:* In the NICM LBBB population, increased relative dyssynchrony in females, who have smaller heart sizes than their male counterparts, is a driver of sex-specific CRT response, particularly at QRSd <150ms. Females may benefit from CRT at a QRSd <130ms, opening the debate on whether sex-specific QRSd cut-offs or QRS/LVEDV measurement should be incorporated into clinical guidelines.

84

## 85 **Introduction**

86

87 Cardiac Resynchronization Therapy (CRT) is a hallmark treatment for patients with  
88 dyssynchronous heart failure.(1) However, despite its widespread success and  
89 uptake, 30% of patients fail to derive benefit.(2,3) These “CRT non-responders” have  
90 amongst the poorest long-term outcomes of any subgroup in the heart failure  
91 population.(4) As such, there is significant interest in examining factors which  
92 modulate CRT response.

93 It has been well established that certain conditions are associated with a poorer  
94 clinical or LV remodelling responses to CRT, for example, ischaemic cardiomyopathy,  
95 atrial fibrillation (AF) and non-left bundle branch block (LBBB) QRS morphology.(5)  
96 These associations are unsurprising from a physiological perspective. An area which  
97 remains poorly understood is the association of male or female sex in CRT  
98 response. Although some studies report no sex differences, for example CARE-  
99 HF(6) most have reported that female sex is predictive of superior clinical and  
100 echocardiographic response.(7–12) In a meta-analysis of 149,259 patients, Yin et al.  
101 observed a lower all-cause mortality in females than males post-CRT (odds ratio[OR]  
102 0.50, 95% confidence interval [CI] 0.36 to 0.70).(13) Females also exhibited  
103 statistically significant improvement in left ventricular ejection fraction (LVEF) and  
104 decrement of left ventricular end-diastolic diameter (LVEDD) when compared with  
105 males.

106 The mechanisms underpinning this association remain unclear. One theory is that  
107 the higher female response rate is related to a higher frequency of LBBB and non-  
108 ischaemic cardiomyopathy (NICM) phenotypes. Determining this accurately requires  
109 examination of large sample sizes, especially as women represent only 20-30% of  
110 the population in CRT trials.(14)

111 Sex-related CRT response disparity may also be explained by differences in cardiac  
112 size,(15) that is, that females are relatively smaller than males, and therefore have a  
113 greater degree of dyssynchrony at a given QRSd. This is supported by studies that  
114 report that females exhibit an improved CRT response compared to males in cohorts  
115 with a QRSd <150ms.(16–18). It is suggested that sex-specific differences in QRS-  
116 response relationship are unexplained by the application of strict LBBB criteria or by  
117 body surface area, but resolved by QRSd “normalization” for heart size using LV

118 mass or LV end diastolic volume (LVEDV).(19,20) These metrics of “relative  
119 dyssynchrony” such as QRSd/LVEDV are not routinely measured in clinical practice,  
120 nor are they frequently reported in larger CRT trials. As such, this area has to date  
121 only been examined in single-center cohorts with small sample sizes. A meta-  
122 analysis of 3496 patients identified height and QRS duration, but not sex, as  
123 independent predictor for the composite outcome of first hospitalisation for heart  
124 failure and all-cause mortality, however, QRSd/LVEDV was not used in this  
125 analysis.(21)

126

127 In this study, we aimed to determine the association between sex, LV size and  
128 relative dyssynchrony in a large cohort of CRT recipients. We tested this by  
129 performing a sub-analysis of patients recruited to the MORE-CRT MPP trial.

130

## 131 **Methods**

132

133 MORE-CRT MPP is a prospective, randomized, multicenter study.(22,23) All patients  
134 initially receive conventional biventricular (BiV) CRT for 6 months. At this stage,  
135 echocardiographic non-responders are randomized to either continued conventional  
136 BiV pacing, or multi-point pacing. CRT response was defined as a reduction in LV  
137 end systolic volume (LVESV) >15% analysed by an independent core lab. We  
138 evaluated data following the first 6 months of conventional BiV CRT; a post-hoc  
139 multivariable analysis examined predictors of this reverse remodelling response  
140 (Supplement Figure 1). In particular we assessed the predicted probability of CRT  
141 response according to sex and QRSd/LVEDV. A subgroup analysis of the NICM  
142 LBBB population was performed to test the effect without confounding from  
143 significant variables such as QRS morphology and cardiomyopathy phenotype.

144

### 145 *Study participants*

146 The study enrolled eligible patients with a standard CRT indication after obtaining  
147 written informed consent. The device was programmed BiV pacing in those patients  
148 who had the quadripolar CRT system successfully implanted (Quartet LV lead with a  
149 Quadra CRT device, Abbott, Sylmar, CA, USA) with programming of the LV pacing  
150 vector, A-V delay, and V-V delay settings at the implanting physician’s discretion.

151 During the first 6 months following implant, all subjects received standard BiV  
152 pacing.

153

#### 154 *Echocardiographic assessment*

155 Trained and qualified site personnel performed echocardiographic recordings, with  
156 analysis performed by an independent Echocardiography Core Laboratory. The core  
157 laboratory averaged the LV volumes measured in the apical two-chamber view and  
158 four-chamber view and measured LVEF. All measurements were made at baseline  
159 and at 6 months.

160

#### 161 *Statistics*

162 Summary statistics were used for baseline characteristics. Continuous variables  
163 were summarized by means and SD. Two-sample student's t-test or Wilcoxon rank  
164 sum test was used to test the difference between 2 groups depending on the  
165 normality of the data. Frequencies and percentages summarized categorical  
166 variables. Chi-square test or Fisher exact test was used to test the difference  
167 between groups.

168 We performed univariable models using the following baseline variables: age, AF,  
169 chronic obstructive pulmonary disease (COPD), diabetes, hypercholesterolaemia,  
170 hypertension, LVEDV, LVEF, New York Heart Association (NYHA) Class I/II versus  
171 NYHA III/IV, renal disease, ischaemic versus NICM, LBBB versus non-LBBB, QRSd,  
172 QRSd/LVEDV ("normalised QRS) and sex. Multivariable models were conducted  
173 using stepwise selections. The criteria for baseline variables entering and staying  
174 into model was  $\alpha=0.25$  and  $\alpha=0.05$ , respectively. Age and gender were forced into  
175 the model. Given that logistic regression methods relies upon the assumption of  
176 linearity between CRT response and the predicting independent variables (patients'  
177 characteristics) we also evaluated the probability of CRT response as a function of  
178 QRSd (divided in 5 subgroups) and as a function of QRSd normalized by dividing it  
179 by LVEDV (divided in 10 deciles) to account for heart size differences between  
180 females and males. The predicted probability of CRT response as a function of  
181 QRSd and normalised QRSd was derived from multivariable logistic regression  
182 models. Analyses were conducted using SAS<sup>®</sup> 9.4.

183

184

185

186

## 187 **Results**

188

### 189 ***Baseline Characteristics***

190 The analysis was performed on 3739 patients (1051, 28% female). Patient baseline  
191 characteristics are shown in Tables 1 and 2. In the whole population (Table 1), the  
192 cardiac size in females was significantly smaller compared to males (176±60 ml vs.  
193 228 ±77 ml,  $p<0.0001$ ). Females had a significantly shorter QRSd than males  
194 (153±22 ms vs. 158±26 ms,  $p<0.0001$ ). Similar results on cardiac size and QRSd  
195 were observed in the non-ischemic LBBB subgroup (Table 2),

196

### 197 ***CRT response in the whole study cohort***

198 CRT response by sex is outlined in Table 3. Female patients had a higher CRT  
199 response rate than males in the total population (70.1% vs. 56.8%,  $p<0.0001$ ). The  
200 results of the logistic regression model (Table 4) show that LBBB, wide QRSd, and  
201 female sex are significant independent predictors for improved response while  
202 history of AF, ischemic aetiology, large heart (LVEDV), and history of renal disease  
203 are significant independent predictors for reduced CRT response. When  
204 QRSd/LVEDV ratio instead of QRSd was included in a separate model,  
205 QRSd/LVEDV was not a significant independent predictor of response (OR 1.21 95%  
206 CI 0.89-1.63,  $p=0.22$ ).

207

### 208 ***CRT response in NICM LBBB cohort***

209 In a subgroup analysis of only patients with a NICM LBBB phenotype (1308 patients,  
210 538 female), there was no significant difference in CRT response between males  
211 and females (73% vs 70%,  $p=0.25$ ). A logistic regression model (Table 5) when  
212 applied to NICM LBBB patients showed that CRT response was significantly and  
213 independently associated with QRSd/LVEDV but not with sex. Normalised QRS was  
214 significantly different between females, who had median value of 0.919 (0.734-  
215 1.127) ms/ml, and males who had median value of 0.708 (0.585-0.886) ms/ml  
216 ( $p<0.001$ ). For female patients with a QRSd/LVEDV of  $>0.915$ ms/ml (the median  
217 value), the CRT response rate was 78%, compared to 68% in patients where the



218 QRSd/LVEDV was below the median value ( $p=0.012$ , Figure 1). CRT response as a  
219 function of QRSd/LVEDV for male patients is shown in Supplemental Figure 2.

220

### 221 ***Analysis of sex-impact as a function of QRS in NICM LBBB cohort***

222

223 In a further analysis of CRT response as a function of QRSd in patients with NICM  
224 and LBBB and the female CRT response rate was statistically superior to that of  
225 males (69.7% vs. 56.9%,  $p = 0.015$ ) at QRSd < 150ms ( $n=315$ , with 54 patients  
226 displaying QRSd < 130ms) see Figure 2). The predicted probability of CRT  
227 response, estimated by the logistic regression model, shows that CRT response  
228 improves diminishing LVEDV and increasing QRSd/LVEDV and that at QRSd  
229 <150ms female patients have higher CRT response vs. male patients (Figure 3). . A  
230 QRSd/LVEDV of 1.54 in patients with NICM, LBBB, and QRSd < 150ms [AUC: 0.62,  
231 95% CI: 0.56-0.69;  $p=0.0002$ ] was the optimal cut point predicting at least 80% CRT  
232 response, based on ROC analysis using the point on the curve closer to the upper  
233 left corner (Supplement Figure 3). Instead, when considering the entire spectrum of  
234 QRS durations, no difference in the predicted probability of CRT response was  
235 observed between the genders (Supplement Figure 4).

236 Further parametric estimates are displayed in Figure 4, showing that the cohort with  
237 the highest predicted CRT response are female patients with an LVEDV < the  
238 median value, “smaller” heart size. The difference between male and female patients  
239 is not significant at larger heart sizes.

240 Females with smaller heart size had a significantly higher CRT response than all  
241 three other cohorts (Supplement Table 1): females with a larger heart size (OR 1.87,  
242 95% CI 1.26-2.77); males with a small heart size (OR 1.61 95% CI 1.11-2.33) and  
243 males with a large heart size (OR 1.92, 95% CI 1.31-2.82).

244

245

### 246 **Discussion**

247 We describe here a post-hoc analysis from the prospective multicenter MORE-CRT  
248 MPP, a large trial of 3739 participants, all with complete echocardiographic data  
249 available at baseline and 6 months. This large sample size allowed associations  
250 between CRT reverse remodelling response and characteristics such as sex to be  
251 reliably determined, as well as provided the opportunity to analyze normalised QRS,

252 a baseline variable which is difficult to examine without complete imaging datasets.  
253 Importantly, we report results from the largest dataset of female CRT patients ever  
254 evaluated so far.(14) Our findings were as follows:

255

- 256 1. CRT response was superior in females in the *overall cohort*.
- 257 2. In the *NICM LBBB cohort*, female sex was not an independent response  
258 predictor.
- 259 3. In the *NICM LBBB cohort*, increasing normalised QRSd is a significant  
260 independent response predictor.
- 261 4. In the *NICM LBBB cohort*, CRT response was superior in females at QRSd <  
262 150 ms and the association between normalised QRSd and response is  
263 strongest at QRSd <150ms.

264

### 265 ***Female sex and CRT response***

266 In the MORE-CRT MPP population, CRT response was overall superior amongst  
267 female patients, supporting data from previous studies.(7–12) Our primary logistic  
268 regression analysis identified the female sex as a significant positive CRT response  
269 modifier, as well as the absence of AF, NICM, LBBB, and the absence of renal  
270 disease. Interestingly, however, when a subgroup analysis of 1308 patients with  
271 NICM and LBBB was performed to control for the effects of cardiomyopathy  
272 phenotype and QRS morphology, there was no significant difference in CRT  
273 response between female and male patients.

274 There is conflicting evidence for whether sex is truly an independent modifier of  
275 response or whether it is related to confounding variables. Arshad et al(24)  
276 suggested from a post-hoc analysis of the MADIT-CRT trial that sex discrepancy was  
277 related to a higher proportion of NICM LBBB patients in females, factors that are  
278 well-established as being beneficial in CRT response. Whilst previous studies have  
279 reported that the female sex may be an independent CRT response modifier, it is  
280 important to note the limitations of logistic regression analyses. Use of logistic  
281 regression to examine this association may be limited by several factors, such as:  
282 small female sample size in CRT trials; the assumption of linearity between female  
283 sex and CRT response; and the assumption of average or low multicollinearity  
284 between dependent and independent variables, such as sex and LVEDV.(25) Our  
285 analysis of a large subgroup of NICM LBBB patients is consistent with the theory that



286 the female sex is not *independently* associated with CRT response, but rather, is  
287 related to confounding from positive response modifiers, such as NICM and LBBB.

288

### 289 ***Sex-specific impact of QRS, heart size and CRT response***

290 Our analysis has demonstrated that the sex-specific divergence in CRT response is  
291 most pronounced at shorter QRSd. This supports two previous secondary analyses  
292 from the MADIT-CRT study which reported that amongst patients with QRSd  
293 <150ms, only females derived benefit from CRT compared to ICD.(26,27)

294 The reasons for this may lie in the discrepancy between male and female heart size,  
295 and thus, “relative dyssynchrony”, measured by normalised QRSd. Indeed we  
296 demonstrate that in the subgroup of NICM LBBB patients, QRSd/LVEDV is a  
297 significant predictor of CRT response. This association is strongest at narrower  
298 QRSd and smaller heart sizes. We suggest therefore that the sex-specific  
299 differences in CRT response in this subpopulation are a result of increased relative  
300 dyssynchrony in the females with narrow QRSd, but reduced heart size compared to  
301 their male counterparts, and thus, an increased QRSd/LVEDV ratio. This supports  
302 previous smaller studies which have suggested that normalized QRSd may be an  
303 appropriate target to guide CRT implantation,(19–21) and mechanistic studies which  
304 have reported that echo-derived dyssynchrony was more predictive of CRT response  
305 than absolute QRSd, and may be beneficial in patients with a narrow QRSd.(28,29)  
306 Furthermore, a post-hoc analysis of the ECHO-CRT trial, a study which reported  
307 futility in patients with a narrow QRSd implanted with CRT, reported that: 1) males  
308 formed the majority of patients and they drove the negative outcome, while CRT-ON  
309 vs. CRT-OFF comparison was neutral in females; 2) the higher risk of negative  
310 outcome was concentrated among those with larger LV dimensions and 3) CRT,  
311 compared with the control group, induced significant LV reverse remodelling in  
312 patients with large normalized QRSd/LVEDV (>1.3 ms/ml).(30)

313 It should be noted that our results indicate that the strength of the correlation  
314 between sex and CRT response appears to be attenuated at very high QRSd. We  
315 theorize that this is because at these high levels of relative dyssynchrony, CRT  
316 response rates are high in both sexes (approximately 70-75%). Therefore, despite  
317 increased QRSd/LVEDV in female patients at these levels, alternative issues are  
318 likely to be driving non-response, thus diminishing the effect of sex on CRT efficacy  
319 at the high extremes of QRSd.

320

321

### 322 ***Clinical implications***

323 This study demonstrates that heart size is an important factor in driving sex-specific  
324 CRT response, in view of increased normalised QRSd in female patients, with the  
325 benefit predominant at narrower QRS durations. These associations were observed  
326 through a sub-group analysis of the NICM LBBB cohort which mitigated noise from  
327 confounding variables.

328 Within an NICM LBBB population, selecting CRT recipients based on absolute QRSd  
329 dichotomization may exclude certain female patients who could benefit from  
330 treatment based on a high degree of relative dyssynchrony due to small heart size.  
331 Current European and US guidelines define QRSd cut-offs of 130ms and 120ms  
332 respectively, as the target criteria for CRT implantation.(1,31,32) These cut-offs are  
333 defined from meta-analyses of studies with few female participants, which may hide  
334 a possible beneficial effect of CRT in female patients with narrower QRSd.(33) This  
335 study opens the debate on whether the use of normalized QRSd should be  
336 integrated into routine clinical practice to identify these patients. Alternatively, sex-  
337 specific QRSd cut-offs may be considered as a practical surrogate accounting for the  
338 significant disparities in normalised QRSd.

339

### 340 **Limitations**

341

342 This study represents a retrospective analysis of the observational MORE-CRT MPP  
343 trial. As such, we cannot exclude inherent limitations associated with observational  
344 studies, such as selection bias. Nevertheless, the study has important strengths: 1)  
345 data collection was prospective; 2) analyses objectives were prespecified; 3)  
346 monitoring with strict source data verification activities; 4) echocardiographic  
347 evaluations by an echo core lab and 5) the large sample size allowed us to control  
348 for confounding patient characteristics, such as ischemic vs non-ischemic  
349 cardiomyopathy or LBBB vs. non-LBBB QRS morphology. Overall, we are confident  
350 that the study data provides a fair description of current CRT application and  
351 outcomes, however, our conclusions should be interpreted as hypothesis generating.

352

### 353 ***Acknowledgment***

354

355 The authors thank all investigators, the staff, and the participants of the MORE CRT

356 MPP trial for their valuable contributions. A full list of participating principal

357 investigators and institutions can be found in Supplemental Table 2.

358

359

360 **TABLES**

361

362 **Table 1 – Baseline patient characteristics for the whole population.** LBBB = Left  
 363 Bundle Branch Block; COPD = Chronic Obstructive Pulmonary Disease; ACE =  
 364 Angiotensin-converting enzyme; ARB = Angiotensin II receptor blocker; \*Wilcoxon  
 365 rank sum test, †Pearson chi-square test  
 366

Demographic Variable	All Subjects (N=3,739)	Female Subjects (N=1,051)	Male Subjects (N=2,688)	P value
<b>Age (Years)</b>				
Mean ± SD	68 ± 11	68 ± 11	68 ± 11	0.3454*
<b>NYHA Class at Enrolment (%)</b>				
Class II	51.2	45.3	53.5	<0.0001†
Class III	46.6	52.1	44.5	
Class IV	1.9	2.4	1.7	
<b>QRS Duration (ms)</b>				
Mean ± SD (n)	156 ± 25	153 ± 22	158 ± 26	<0.0001*
<b>QRS Morphology (%)</b>				
LBBB	70.2	79.5	66.4	<0.0001†
Non-LBBB	29.8	20.5	33.6	
<b>Cardiomyopathy Etiology (%)</b>				
Ischemic	41.0	22.0	48.4	<0.0001†
Non-Ischemic	59.0	78.0	51.6	
<b>LVESV (ml)</b>				
Mean ± SD	160 ± 65	131 ± 52	171 ± 66	<0.0001*
<b>LVEDV (ml)</b>				
Mean ± SD	214 ± 76	176 ± 60	228 ± 77	<0.0001*
<b>LVEF (%)</b>				
Mean ± SD	26 ± 7	27 ± 7	26 ± 7	0.0965*
<b>Device Type (%)</b>				
CRT-P	12.2	16.9	10.4	<0.0001†
CRT-D	87.8	83.1	89.6	
<b>Medical History (%)</b>				
Hypertension	62.3	59.0	63.6	0.0087†
Hypercholesterolemia	40.1	34.6	42.2	<0.0001†
Diabetes	33.4	30.4	34.6	0.0126†
COPD	10.6	8.5	11.5	0.0076†
Renal Disease	15.0	11.4	16.4	0.0001†
<b>Medical Treatment (%)</b>				
Diuretics	77.4	79.5	76.5	0.0474†
ACE inhibitor or ARB	89.3	89.4	89.2	0.8400†
β-Blocker	89.1	89.2	89.1	0.8697†
Aldosterone antagonist	38.9	38.5	39.1	0.7660†
Anticoagulant	26.9	21.4	29.1	<0.0001†
Calcium Channel Blockers	7.9	6.2	8.6	0.0156†
Nitrates	7.4	5.6	8.1	0.0097†

367

368

369

370 **Table 2 – Baseline patient characteristics for non-ischemic LBBB patients.**  
 371 COPD = Chronic Obstructive Pulmonary Disease; ACE = Angiotensin-converting  
 372 enzyme; ARB = Angiotensin II receptor blocker; \*Wilcoxon rank sum test, †Pearson  
 373 chi-square test  
 374

Demographic Variable	All Subjects (N=1,308)	Female Subjects (N=538)	Male Subjects (N=770)	P value
<b>Age (Years)</b>				
Mean ± SD	66 ± 11	67 ± 10	65 ± 11	0.0039*
<b>NYHA Class at Enrolment (%)</b>				
Class II	55.4	45.5	62.2	<0.0001†
Class III	42.2	51.5	35.7	
Class IV	2.1	2.6	1.8	
<b>QRS Duration (ms)</b>				
Mean ± SD (n)	161 ± 19	157 ± 18	165 ± 20	<0.0001*
<b>LVESV (ml)</b>				
Mean ± SD	162 ± 70	135 ± 54	181 ± 73	<0.0001*
<b>LVEDV (ml)</b>				
Mean ± SD	216 ± 82	180 ± 64	241 ± 85	<0.0001*
<b>LVEF (%)</b>				
Mean ± SD	26 ± 7	26 ± 7	26 ± 7	0.3278*
<b>Device Type (%)</b>				
CRT-P	11.3	13.9	9.5	0.0122†
CRT-D	88.7	86.1	90.5	
<b>Medical History (%)</b>				
Hypertension	56.4	55.0	57.4	0.3922†
Hypercholesterolemia	33.1	29.9	35.3	0.0412†
Diabetes	28.4	29.4	27.8	0.5342†
COPD	9.7	8.9	10.3	0.4213†
Renal Disease	9.2	9.1	9.2	0.9445†
<b>Medical Treatment (%)</b>				
Diuretics	76.6	78.8	75.1	0.1154†
ACE inhibitor or ARB	91.5	90.7	92.1	0.3811†
β-Blocker	91.1	90.3	91.6	0.4454†
Aldosterone antagonist	40.0	38.3	41.2	0.2956†
Anticoagulant	21.0	17.7	23.4	0.0125†
Calcium Channel Blockers	5.0	5.2	4.9	0.8266†
Nitrates	3.7	3.5	3.8	0.8242†

375  
 376  
 377

378 **Table 3 - CRT response by sex**

379

380

Population	Gender	6M Responder Rate(n/N)	p-value
Whole Population	F	70.12% (737/1051)	<.0001
	M	56.85% (1528/2688)	
LBBB Patients	F	71.07% (479/674)	<.0001
	M	62.06% (854/1376)	
Non-ischemic LBBB Patients	F	73.05% (393/538)	0.2508
	M	70.13% (540/770)	
Non-ischemic LBBB and QRSd<150ms	F	69.71% (122/175)	0.0157
	M	56.86% (87/153)	
Non-LBBB Patients	F	62.64% (109/174)	<.0001
	M	40.29% (280/695)	

381

382

383

384



385  
386  
387

**Table 4 - Logistic regression results (whole population)**

Parameter	Univariate			Multivariate (2866 patients)	
	Parameter Estimate [95% CI]	p value	Sample Size	Parameter Estimate [95% CI]	p value
Age	0.998 [0.992, 1.004]	0.5685	3,738	1.002 [0.994, 1.010]	0.6972
Atrial fibrillation	0.679 [0.565, 0.815]	<.0001	3,739	0.785 [0.627, 0.982]	0.0339
COPD	1.018 [0.822, 1.260]	0.8702	3,739		
Diabetes	0.770 [0.671, 0.884]	0.0002	3,739		
Hypercholesterolemia	0.813 [0.712, 0.929]	0.0024	3,739		
Hypertension	1.047 [0.914, 1.198]	0.5096	3,739		
Ischemic vs Non-Ischemic	0.502 [0.439, 0.574]	<.0001	3,739	0.550 [0.466, 0.648]	<.0001
LBBB vs Non-LBBB	2.294 [1.952, 2.696]	<.0001	2,919	1.911 [1.593, 2.291]	<.0001
LVEDV	0.999 [0.998, 1.000]	0.0024	3,739	0.998 [0.997, 0.999]	0.0035
LVEF	0.996 [0.987, 1.005]	0.4062	3,739		
NYHA I/II vs III/IV	1.267 [1.111, 1.445]	0.0004	3,728		
QRSd	1.007 [1.005, 1.010]	<.0001	3,223	1.005 [1.001, 1.008]	0.0107
Renal Disease	0.569 [0.475, 0.682]	<.0001	3,739	0.663 [0.532, 0.826]	0.0002
Female vs Male	1.782 [1.530, 2.075]	<.0001	3,739	1.385 [1.144, 1.675]	0.0008

388  
389

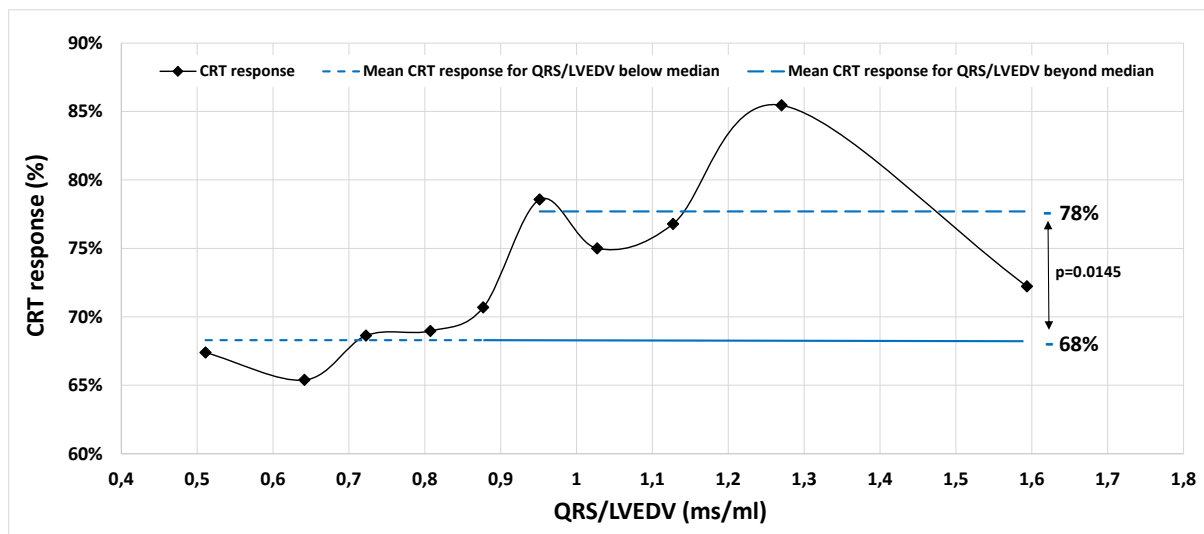
390 **Table 5 - Logistic regression results (non-ischaemic left bundle branch block**  
 391 **population)**  
 392

Parameters	Univariate			Multivariate (1295 patients)	
	Parameter Estimate [95% CI]	p-value	Sample Size	Parameter Estimate [95% CI]	p-value
Age	1.002 [0.991, 1.013]	0.7481	1308	1.000 [0.988, 1.012]	0.9983
AF vs No AF	0.651 [0.449, 0.945]	0.0240	1308	0.627 [0.430, 0.913]	0.0150
COPD Yes vs No	1.400 [0.908, 2.158]	0.1275	1308		.
Diabetes Yes vs No	0.759 [0.585, 0.985]	0.0378	1308	0.751 [0.577, 0.978]	0.0333
Hypercholesterolemia	0.922 [0.715, 1.187]	0.5278	1308		.
Hypertension Yes vs No	0.994 [0.780, 1.265]	0.9590	1308		.
LVEDV	0.998 [0.997, 0.999]	0.0041	1308		.
LVEF	1.009 [0.991, 1.026]	0.3307	1308		.
NYHA I/II vs NYHA III/IV	1.115 [0.876, 1.419]	0.3751	1304		.
QRSd	1.010 [1.004, 1.016]	0.0022	1295		.
QRSd/LVEDV	1.948 [1.267, 2.996]	0.0024	1295	1.984 [1.246, 3.157]	0.0039
Renal Disease Yes vs No	0.616 [0.417, 0.909]	0.0147	1308		.
Female vs Male	1.154 [0.903, 1.475]	0.2509	1308	0.987 [0.758, 1.285]	0.9202

393  
 394  
 395

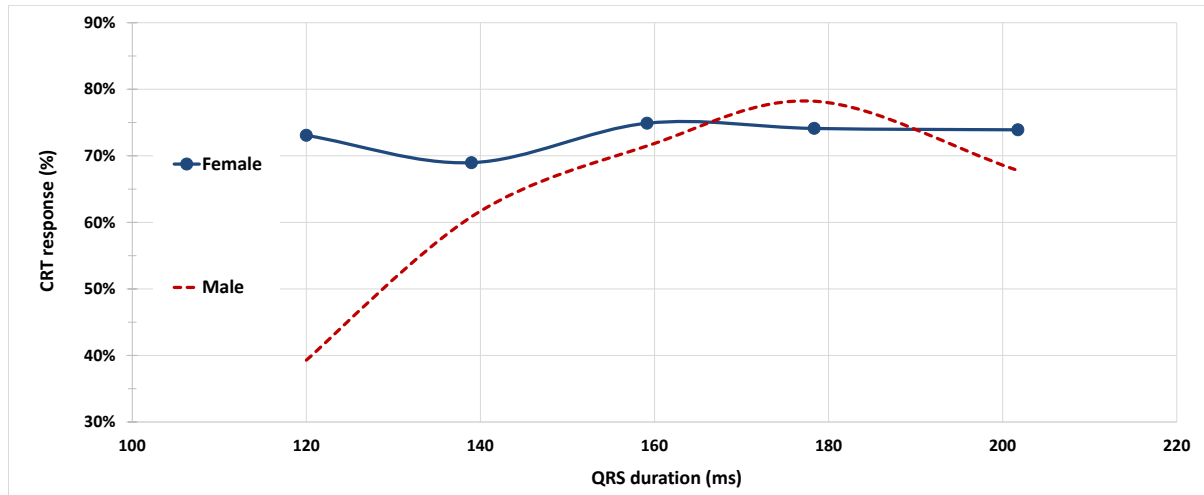
396  
397  
398  
399  
400

**Figure 1: CRT response as function of QRSd/LVEDV in NICM LBBB female patients. QRSd/LVEDV was treated as a continuous variable and divided into 10 deciles**



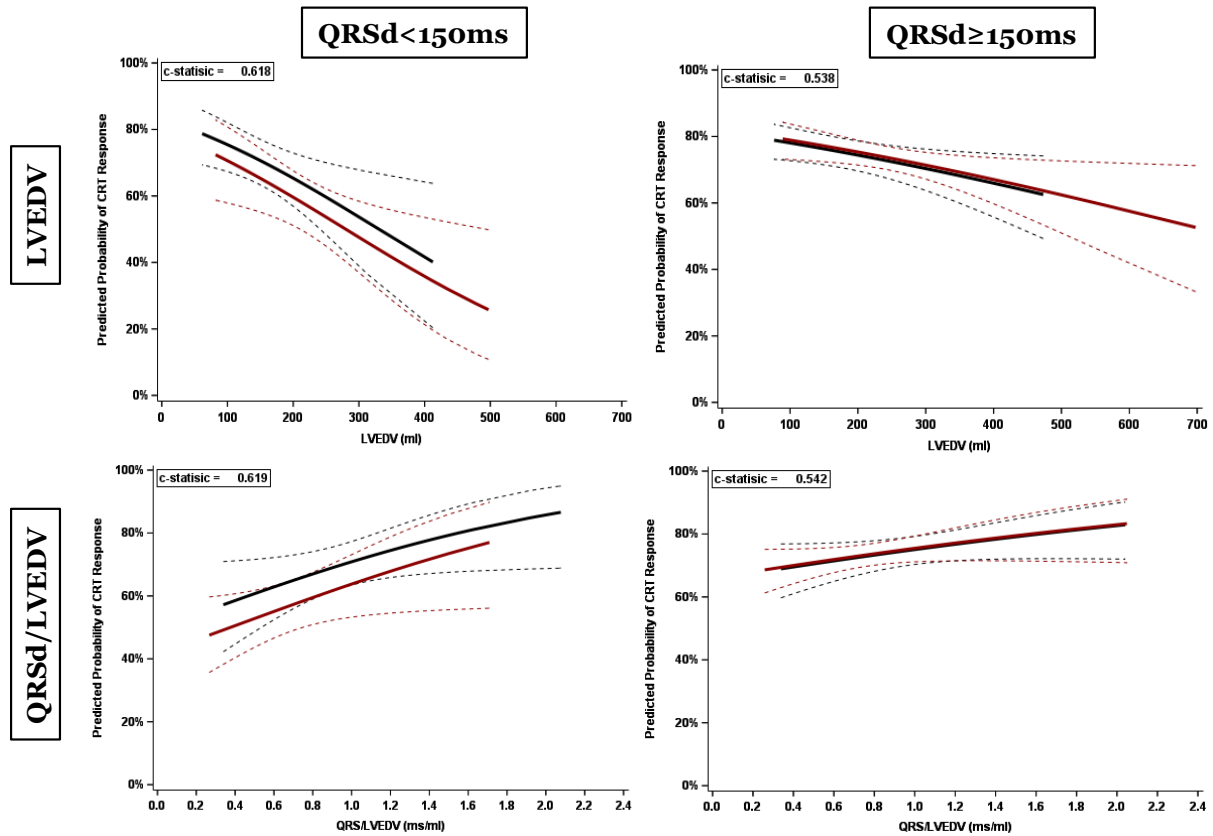
401  
402  
403  
404  
405

406 **Figure 2** - CRT response in patients with NICM and LBBB as a function of QRSd.  
407 QRSd was treated as a continuous variable, divided in 5 strata, as follows: strata 1 -  
408 QRSd < 130ms; strata 2 - QRSd ≥ 130 and < 150 ms; strata 3 patients with QRSd ≥ 150  
409 ms and < 170 ms, strata 4 patients with QRSd ≥ 170 ms and < 190 ms, strata 5  
410 patients with QRSd ≥ 190ms.  
411



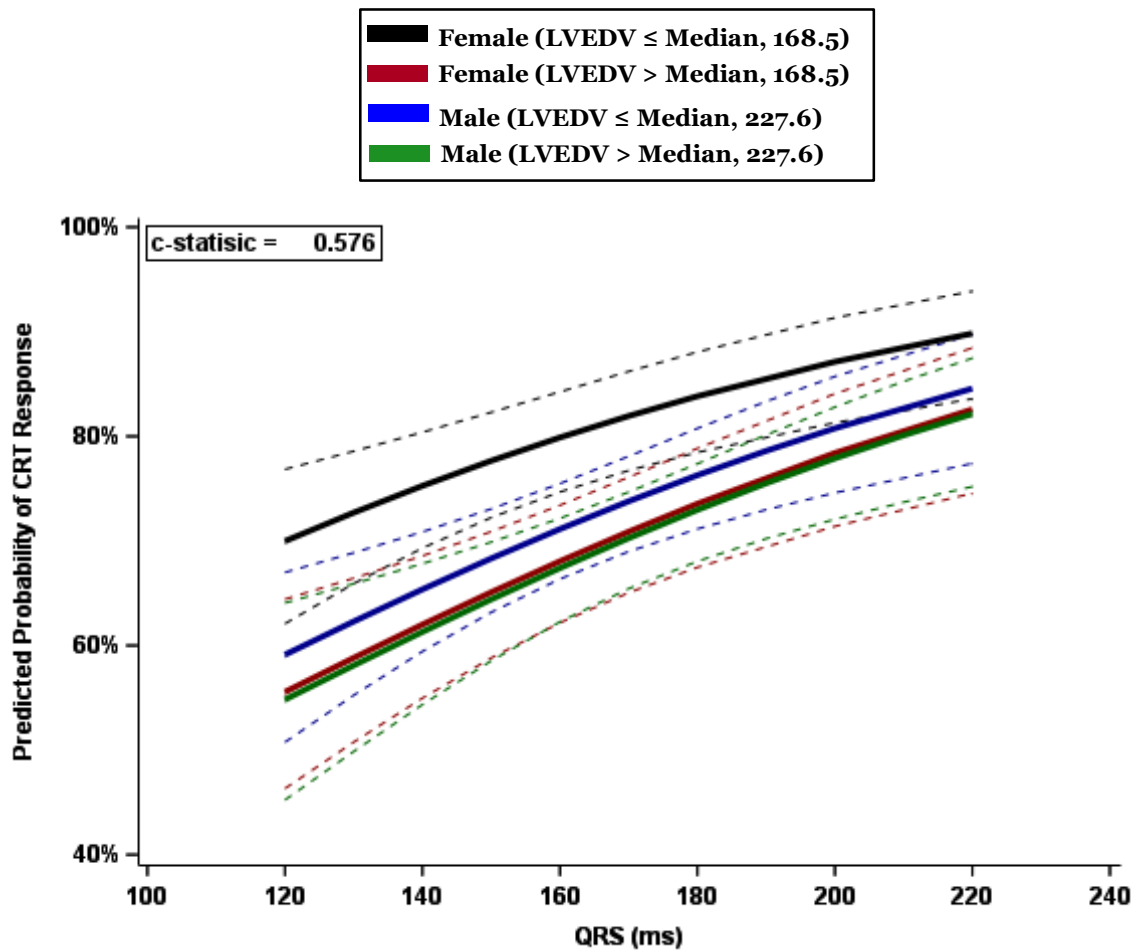
412  
413  
414  
415  
416  
417  
418  
419

420 **Figure 3** - Parametric estimates with corresponding 95% confidence intervals  
421 showing predicted CRT response as function of LVEDV (top 2 panels) and  
422 normalised QRSd (bottom 2 panels). The left panels display data for patients with  
423 QRSd <150ms, and the right panels for those with QRSd >150ms. Blue (with 95%  
424 CI): female patients, red (with 95% CI): male patients.  
425



426  
427  
428

429 **Figure 4** - Parametric estimates with corresponding 95% confidence interval  
430 showing predicted CRT response as function of QRSd in 4 subgroups: females with  
431 heart size above and below median LVEDV of 168.5ml, and males with heart size  
432 above and below median LVEDV of 227.6ml.  
433



434  
435  
436  
437  
438  
439  
440  
441  
442  
443  
444  
445  
446  
447  
448  
449  
450  
451  
452  
453



## 454 **REFERENCES**

- 455
- 456 1. Glikson M, Nielsen JC, Kronborg MB, Michowitz Y, Auricchio A, Barbash IM, et  
457 al. 2021 ESC Guidelines on cardiac pacing and cardiac resynchronization  
458 therapy Developed by the Task Force on cardiac pacing and cardiac  
459 resynchronization therapy of the European Society of Cardiology (ESC) With  
460 the special contribution of the European Heart Rhythm Association (EHRA).  
461 EP Europace [Internet]. 2022 Jan 4 [cited 2023 May 15];24(1):71–164.  
462 Available from: <https://academic.oup.com/europace/article/24/1/71/6358627>
  - 463 2. Young JB. Combined Cardiac Resynchronization and Implantable  
464 Cardioversion Defibrillation in Advanced Chronic Heart Failure. *JAMA*. 2003  
465 May 28;289(20):2685.
  - 466 3. Varma N, Boehmer J, Bhargava K, Yoo D, Leonelli F, Costanzo M, et al.  
467 Evaluation, Management, and Outcomes of Patients Poorly Responsive to  
468 Cardiac Resynchronization Device Therapy. *J Am Coll Cardiol* [Internet]. 2019  
469 Nov 26 [cited 2023 Oct 13];74(21):2588–603. Available from:  
470 <https://www.jacc.org/doi/10.1016/j.jacc.2019.09.043>
  - 471 4. Vijayaraman P, Herweg B, Verma A, Sharma PS, Batul SA, Ponnusamy SS, et  
472 al. Rescue left bundle branch area pacing in coronary venous lead failure or  
473 nonresponse to biventricular pacing: Results from International LBBAP  
474 Collaborative Study Group. *Heart Rhythm*. 2022 Aug 1;
  - 475 5. Sieniewicz BJ, Gould J, Porter B, Sidhu BS, Teall T, Webb J, et al.  
476 Understanding non-response to cardiac resynchronisation therapy: common  
477 problems and potential solutions. *Heart Fail Rev* [Internet]. 2019 Jan 1 [cited  
478 2022 Sep 2];24(1):41–54. Available from:  
479 <https://link.springer.com/article/10.1007/s10741-018-9734-8>
  - 480 6. Cleland JGF, Freemantle N, Erdmann E, Gras D, Kappenberger L, Tavazzi L,  
481 et al. Long-term mortality with cardiac resynchronization therapy in the Cardiac  
482 Resynchronization-Heart Failure (CARE-HF) trial. *Eur J Heart Fail* [Internet].  
483 2012 Jun 1 [cited 2023 Oct 13];14(6):628–34. Available from:  
484 <https://onlinelibrary.wiley.com/doi/full/10.1093/eurjhf/hfs055>
  - 485 7. Cheng A, Gold MR, Waggoner AD, Meyer TE, Seth M, Rapkin J, et al.  
486 Potential mechanisms underlying the effect of gender on response to cardiac  
487 resynchronization therapy: Insights from the SMART-AV multicenter trial. *Heart*  
488 *Rhythm*. 2012 May 1;9(5):736–41.
  - 489 8. Lilli A, Ricciardi G, Porciani MC, Perini AP, Pieragnoli P, Musilli N, et al. Cardiac  
490 Resynchronization Therapy: Pacing and Clinical Electrophysiology [Internet].  
491 2007 Nov 1 [cited 2023 Jun 5];30(11):1349–55. Available from:  
492 <https://onlinelibrary.wiley.com/doi/full/10.1111/j.1540-8159.2007.00870.x>
  - 493 9. Kirubakaran S, Ladwiniec A, Arujuna A, Ginks M, McPhail M, Bostock J, et al.  
494 Male gender and chronic obstructive pulmonary disease predict a poor clinical  
495 response in patients undergoing cardiac resynchronisation therapy. *Int J Clin*  
496 *Pract* [Internet]. 2011 Mar 1 [cited 2023 Jun 5];65(3):281–8. Available from:  
497 <https://onlinelibrary.wiley.com/doi/full/10.1111/j.1742-1241.2010.02491.x>
  - 498 10. Leyva F, Foley PWX, Chalil S, Irwin N, Smith REA. Female Gender is  
499 Associated with a Better Outcome after Cardiac Resynchronization Therapy.  
500 *Pacing and Clinical Electrophysiology* [Internet]. 2011 Jan 1 [cited 2023 Jun  
501 5];34(1):82–8. Available from:  
502 <https://onlinelibrary.wiley.com/doi/full/10.1111/j.1540-8159.2010.02909.x>

- 503 11. Van Bommel RJ, Bax JJ, Abraham WT, Chung ES, Pires LA, Tavazzi L, et al.  
504 Characteristics of heart failure patients associated with good and poor  
505 response to cardiac resynchronization therapy: a PROSPECT (Predictors of  
506 Response to CRT) sub-analysis. *Eur Heart J* [Internet]. 2009 Oct 1 [cited 2023  
507 Jun 5];30(20):2470–7. Available from:  
508 <https://academic.oup.com/eurheartj/article/30/20/2470/428761>
- 509 12. Providencia R, Marijon E, Barra S, Reitan C, Breitenstein A, Defaye P, et al.  
510 Usefulness of a clinical risk score to predict the response to cardiac  
511 resynchronization therapy. *Int J Cardiol*. 2018 Jun 1;260:82–7.
- 512 13. Yin FH, Fan CL, Guo YY, Zhu H, Wang ZL. The impact of gender difference on  
513 clinical and echocardiographic outcomes in patients with heart failure after  
514 cardiac resynchronization therapy: A systematic review and meta-analysis.  
515 *PLoS One* [Internet]. 2017 Apr 1 [cited 2023 Jun 5];12(4):e0176248. Available  
516 from:  
517 <https://journals.plos.org/plosone/article?id=10.1371/journal.pone.0176248>
- 518 14. Ahmad J, Ahmad HA, Surapaneni P, Penagaluri A, Desai S, Dominic P.  
519 Women are underrepresented in cardiac resynchronization therapy trials. *J*  
520 *Cardiovasc Electrophysiol* [Internet]. 2022 Dec 1 [cited 2023 Jun  
521 26];33(12):2653–7. Available from:  
522 <https://onlinelibrary.wiley.com/doi/full/10.1111/jce.15715>
- 523 15. De Simone G, Devereux RB, Daniels SR, Meyer RA. Gender Differences in  
524 Left Ventricular Growth. *Hypertension* [Internet]. 1995 [cited 2023 Jun 9];26(6  
525 I):979–83. Available from:  
526 <https://www.ahajournals.org/doi/abs/10.1161/01.HYP.26.6.979>
- 527 16. Varma N, Manne M, Nguyen D, He J, Niebauer M, Tchou P. Probability and  
528 magnitude of response to cardiac resynchronization therapy according to QRS  
529 duration and gender in nonischemic cardiomyopathy and LBBB. *Heart*  
530 *Rhythm*. 2014 Jul 1;11(7):1139–47.
- 531 17. De Pooter J, Kamoen V, El Haddad M, Stroobandt R, De Buyzere M, Jordaens  
532 L, et al. Gender differences in electro-mechanical characteristics of left bundle  
533 branch block: Potential implications for selection and response of cardiac  
534 resynchronization therapy. *Int J Cardiol*. 2018 Apr 15;257:84–91.
- 535 18. Zusterzeel R, Selzman KA, Sanders WE, Canos DA, O'Callaghan KM,  
536 Carpenter JL, et al. Cardiac resynchronization therapy in women: US Food  
537 and Drug Administration meta-analysis of patient-level data. *JAMA Intern Med*  
538 [Internet]. 2014 [cited 2023 Jun 9];174(8):1340–8. Available from:  
539 <https://pubmed.ncbi.nlm.nih.gov/25090172/>
- 540 19. Varma N, Lappe J, He J, Niebauer M, Manne M, Tchou P. Sex-Specific  
541 Response to Cardiac Resynchronization Therapy: Effect of Left Ventricular  
542 Size and QRS Duration in Left Bundle Branch Block. *JACC Clin Electrophysiol*  
543 [Internet]. 2017 Nov 11 [cited 2023 Jun 5];3(8):844–53. Available from:  
544 <https://www.jacc.org/doi/10.1016/j.jacep.2017.02.021>
- 545 20. Zweerink A, Friedman DJ, Klem I, van de Ven PM, Vink C, Biesbroek PS, et al.  
546 Size Matters: Normalization of QRS Duration to Left Ventricular Dimension  
547 Improves Prediction of Long-Term Cardiac Resynchronization Therapy  
548 Outcome. *Circ Arrhythm Electrophysiol* [Internet]. 2018 Dec 1 [cited 2023 Jun  
549 5];11(12):e006767. Available from:  
550 <https://www.ahajournals.org/doi/abs/10.1161/CIRCEP.118.006767>
- 551 21. Linde C, Cleland JGF, Gold MR, Claude Daubert J, Tang ASL, Young JB, et al.  
552 The interaction of sex, height, and QRS duration on the effects of cardiac

- 553 resynchronization therapy on morbidity and mortality: an individual-patient data  
554 meta-analysis. *Eur J Heart Fail* [Internet]. 2018 Apr 1 [cited 2023 Jun  
555 5];20(4):780–91. Available from:  
556 <https://onlinelibrary.wiley.com/doi/full/10.1002/ejhf.1133>
- 557 22. Leclercq C, Burri H, Delnoy PP, Rinaldi CA, Sperzel J, Calò L, et al. Cardiac  
558 resynchronization therapy non-responder to responder conversion rate in the  
559 MORE-CRT MPP trial. *EP Europace* [Internet]. 2023 Oct 5 [cited 2023 Oct  
560 17];25(10):5–8. Available from: <https://dx.doi.org/10.1093/europace/euad294>
- 561 23. Leclercq C, Investigators on behalf of the MCM, Burri H, Investigators on  
562 behalf of the MCM, Curnis A, Investigators on behalf of the MCM, et al.  
563 Cardiac resynchronization therapy non-responder to responder conversion  
564 rate in the more response to cardiac resynchronization therapy with MultiPoint  
565 Pacing (MORE-CRT MPP) study: results from Phase I. *Eur Heart J* [Internet].  
566 2019 Sep 14 [cited 2023 Oct 17];40(35):2979–87. Available from:  
567 <https://dx.doi.org/10.1093/eurheartj/ehz109>
- 568 24. Arshad A, Moss AJ, Foster E, Padeletti L, Barsheshet A, Goldenberg I, et al.  
569 Cardiac resynchronization therapy is more effective in women than in men:  
570 The MADIT-CRT (multicenter automatic defibrillator implantation trial with  
571 cardiac resynchronization therapy) trial. *J Am Coll Cardiol*. 2011 Feb  
572 15;57(7):813–20.
- 573 25. Ranganathan P, Pramesh C, Aggarwal R. Common pitfalls in statistical  
574 analysis: Logistic regression. *Perspect Clin Res* [Internet]. 2017 Jul 1 [cited  
575 2023 Aug 11];8(3):148. Available from: [/pmc/articles/PMC5543767/](https://pubmed.ncbi.nlm.nih.gov/3543767/)
- 576 26. Zareba W, Klein H, Cygankiewicz I, Hall WJ, McNitt S, Brown M, et al.  
577 Effectiveness of Cardiac Resynchronization Therapy by QRS Morphology in  
578 the Multicenter Automatic Defibrillator Implantation Trial–Cardiac  
579 Resynchronization Therapy (MADIT-CRT). *Circulation* [Internet]. 2011 Mar 15  
580 [cited 2023 Aug 11];123(10):1061–72. Available from:  
581 <https://www.ahajournals.org/doi/abs/10.1161/CIRCULATIONAHA.110.960898>
- 582 27. Biton Y, Zareba W, Goldenberg I, Klein H, McNitt S, Polonsky B, et al. Sex  
583 Differences in Long-Term Outcomes With Cardiac Resynchronization Therapy  
584 in Mild Heart Failure Patients With Left Bundle Branch Block. *J Am Heart  
585 Assoc* [Internet]. 2015 Jun 29 [cited 2023 Aug 11];4(7). Available from:  
586 <https://www.ahajournals.org/doi/abs/10.1161/JAHA.115.002013>
- 587 28. Cazeau SJ, Daubert JC, Tavazzi L, Frohlig G, Paul V. Responders to cardiac  
588 resynchronization therapy with narrow or intermediate QRS complexes  
589 identified by simple echocardiographic indices of dyssynchrony: The DESIRE  
590 study. *Eur J Heart Fail* [Internet]. 2008 Mar 1 [cited 2023 Jun 5];10(3):273–80.  
591 Available from:  
592 <https://onlinelibrary.wiley.com/doi/full/10.1016/j.ejheart.2008.02.007>
- 593 29. Haghjoo M, Bagherzadeh A, Fazelifar AF, Haghghi ZO, Esmailzadeh M,  
594 Alizadeh A, et al. Prevalence of Mechanical Dyssynchrony in Heart Failure  
595 Patients with Different QRS Durations. *Pacing and Clinical Electrophysiology*  
596 [Internet]. 2007 May 1 [cited 2023 Jun 5];30(5):616–22. Available from:  
597 <https://onlinelibrary.wiley.com/doi/full/10.1111/j.1540-8159.2007.00722.x>
- 598 30. Varma N, Sogaard P, Bax JJ, Abraham WT, Borer JS, Dickstein K, et al.  
599 Interaction of left ventricular size and sex on outcome of cardiac  
600 resynchronization therapy among patients with a narrow QRS duration in the  
601 EchoCRT trial. *J Am Heart Assoc* [Internet]. 2018 Jun 1 [cited 2023 Jun

- 602 5];7(11). Available from:  
603 <https://www.ahajournals.org/doi/abs/10.1161/JAHA.118.009592>  
604 31. Heidenreich PA, Bozkurt B, Aguilar D, Allen LA, Byun JJ, Colvin MM, et al.  
605 2022 AHA/ACC/HFSA Guideline for the Management of Heart Failure: A  
606 Report of the American College of Cardiology/American Heart Association  
607 Joint Committee on Clinical Practice Guidelines. *J Am Coll Cardiol* [Internet].  
608 2022 May 3 [cited 2023 Aug 11];79(17):e263–421. Available from:  
609 <https://www.jacc.org/doi/10.1016/j.jacc.2021.12.012>  
610 32. Chung MK, Patton KK, Lau CP, Dal Forno ARJ, Al-Khatib SM, Arora V, et al.  
611 2023 HRS/APHRS/LAHRs guideline on cardiac physiologic pacing for the  
612 avoidance and mitigation of heart failure. *Heart Rhythm* [Internet]. 2023 Sep 1  
613 [cited 2023 Oct 13];20(9):e17–91. Available from:  
614 <https://onlinelibrary.wiley.com/doi/full/10.1002/joa3.12872>  
615 33. Stavrakis S, Lazzara R, Thadani U. The Benefit of Cardiac Resynchronization  
616 Therapy and QRS Duration: A Meta-Analysis. *J Cardiovasc Electrophysiol*  
617 [Internet]. 2012 Feb 1 [cited 2023 Aug 11];23(2):163–8. Available from:  
618 <https://onlinelibrary.wiley.com/doi/full/10.1111/j.1540-8167.2011.02144.x>  
619