

1 **Does Women Empowerment alone Influence Contraception utilization in Bangladesh**
2 **perspective? Findings from demographic health survey 2017-18 using A SEM analysis**

3 **Authors:**

4 Md. Nawal Sarwer¹, Effat Ara Jahan¹, Akibul Islam Chowdhury^{1,2*}

5 ¹Department of Nutrition and Food Engineering, Daffodil International University, Savar,
6 Dhaka-1216, Bangladesh.

7 ²Department of Food Technology and Nutrition Science, Noakhali Science and Technology
8 University, Noakhali-3814, Bangladesh.

9

10 ***Corresponding Author:**

11 Akibul Islam Chowdhury

12 Lecturer

13 Department of Nutrition and Food Engineering

14 Daffodil International University

15 Savar, Bangladesh.

16 Email: akibul433@gmail.com; akibul.nfe@diu.edu.bd

17

18

19

20

21

22

23

24

25

26 **Abstract:**

27 **Background:** Women empowerment is a crucial issue that is less studied as a factor of
28 contraception use among married women which helps to achieve sustainable development goals
29 (SDGs). The present study aims to assess the relationship between women empowerment and
30 contraception use.

31 **Methods:** This cross-sectional study used Bangladesh Demographic and Health Survey data 2017-
32 18 which included 12006 (weighted) women aged from 15-49 years old. Hierarchical logistic
33 regression and structural equation model (SEM) were used to show the relationship between
34 women empowerment and contraception use.

35 **Results:** Overall, the tend to using contraception was increased with increased age, urban
36 residence, increased wealth index and education level of both husband and wife. The findings from
37 regression model showed that women empowerment in terms of women decision making, attitude
38 to violence and social independence significantly influence the contraception use after controlling
39 the covariates ($p < 0.05$). SEM analysis showed negative relationship with overall women
40 empowerment and contraception use ($\beta = -0.138$) which was not significant ($p > 0.05$).

41 **Conclusion:** This study implies that greater women empowerment may not always act as stronger
42 determinant for using contraception, and therefore other contributing factors such as age,
43 education, religion, husband's participation, joined decision making, economic status and couple
44 relationship should be warranted.

45 **Keywords:** women empowerment; contraception; health; structural equation model (SEM);
46 Bangladesh

47

48 **Introduction:**

49 Women's empowerment has grown in importance on the worldwide development agenda in recent
50 decades which is used as common development strategy in developing countries (1). Access to
51 contraception through family planning programs boosts their chances of having the number of
52 children they want and reduces the chance of unintended pregnancy which lead to abortion related
53 morbidity and mortality (2). According to a recent report about Millenium Development Goals
54 (MDGs) achievement and preparation of Sustainable Development Goals (SDGs) demonstrated
55 that only few countries successfully achieve the target of reducing maternal and child mortality
56 (3). The goal five of SDGs focus on the women empowerment and gender equality.

57 The idea of "empowerment" for women is broad and covers a variety of topics, including the
58 capacity for decision-making, autonomy, mobility, reproductive rights, economic independence,
59 and legal rights to equal treatment, inheritance, and protection from discrimination. These factors
60 work together to provide women more control over their family planning and reproductive
61 decisions. The need to strengthen efforts to address structural factors that influence the use of
62 contraceptives, such as women's empowerment, and to better understand these factors is
63 highlighted by behaviors (4). There are direct or indirect connections between women's
64 empowerment and the use of contraception as a method of managing fertility. Early 1990s data
65 showed that empowered women in rural Bangladesh were more likely to use contraception than
66 other women (5). In recent years, there has been a growing focus on how gender-based power
67 dynamics in men's and women's sexual interactions affect attitudes and behaviors connected to
68 fertility (6).

69 Bangladesh is a Muslim-majority country and men are systematically having more power and
70 authority in decision making process than women (7). However, Bangladesh has made significant

71 progress in increasing the contraceptive prevalence rate (CPR) over the past few decades. The
72 contraceptive prevalence rate (CPR) in Bangladesh increased from 8% in 1975 to 61.9% in 2017
73 (BDHS-2017) although this prevalence is slightly lower than BDHS 2014 data (62.4%) (8).
74 According to a number of studies, the use of contraception is positively impacted by the
75 empowerment of women in the marital sphere. Women's empowerment and gender equality
76 frequently play a significant effect in the use of contraceptives and the fall in fertility (9-11).
77 Women's autonomy significantly affects the usage of contraceptives, especially when it comes to
78 issues involving reproductive rights. When women feel empowered, they are more likely to
79 exercise their right to control their fertility and opt for reliable contraception (4). Women are more
80 likely to have access to and be able to afford various forms of contraception if they are
81 economically independent and actively working. So, increased use of contraception and financial
82 independence are linked (12). A number of previous studies in Bangladesh evaluated the
83 relationships between contraception use and women empowerment which were focused on
84 women's involvement in decision making (13-17), attitude to violence (15), freedom of movement
85 (15-17). These variables provide a narrow scope of women empowerment for understanding the
86 relationship of women empowerment and contraceptive use.

87 Therefore, the aim of the present study is to evaluate the relationship between women's
88 empowerment and the utilization of contraception in Bangladesh using the recent developed index
89 named Survey-based Women's emPOWERment (SWPER) index (18, 19). Calculation of women
90 empowerment is difficult due to its multidimensional term and complex nature. To better capture
91 the multifaceted and complex construct of women's empowerment and allow for cross-country and
92 cross-temporal comparability Ewer-ling and colleagues created the SWPER index based on
93 individual-level DHS data from 34 African nations and recently it is validated in Bangladesh (18,

94 19). In Bangladesh, it is crucial to understand whether or not women's empowerment is now
95 influencing their use of contraception. The study tries to explore the intricate relationship between
96 women's empowerment and the utilization of contraception in Bangladesh.

97

98 **Methods:**

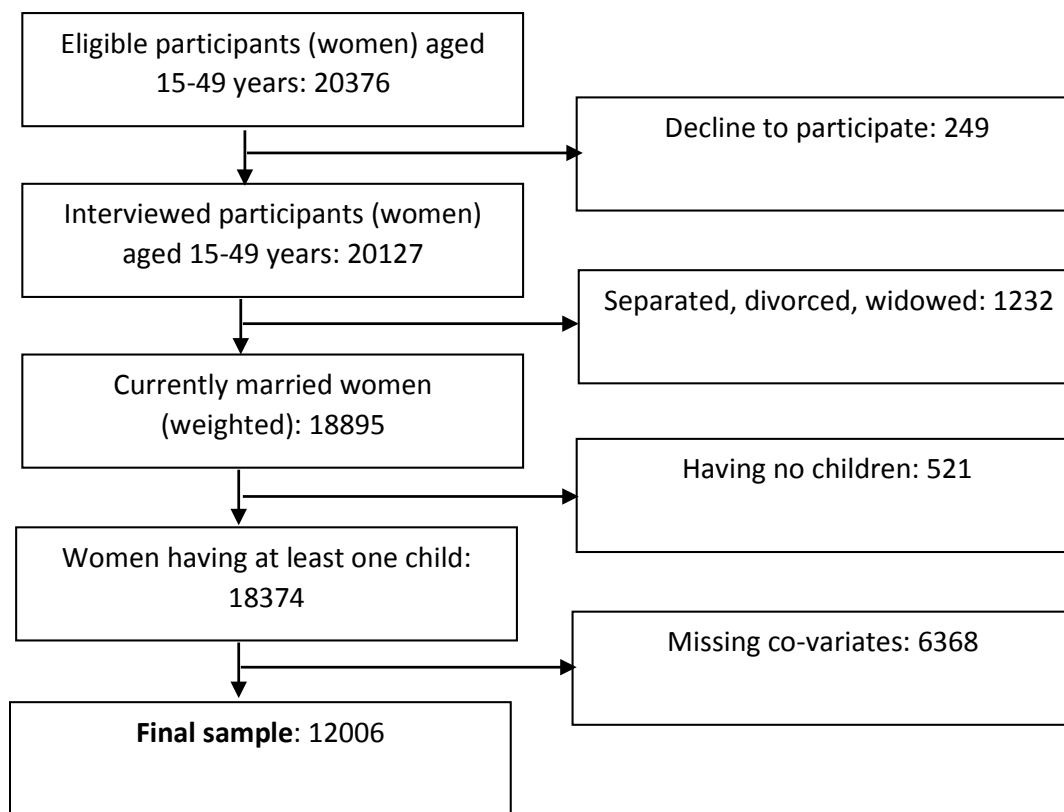
99 *Study design:*

100 This cross-sectional study was based on the secondary data of the recent Bangladesh Demographic
101 and Health Survey (BDHS) 2017 (8). Data was obtained from the DHS website
102 (<https://dhsprogram.com/>). The BDHS survey is a nationally representative survey which was
103 conducted by the National Institute for Population Research and Training in collaboration with
104 ICF International and Mitra and Associates. This survey was based on a two-stage stratified sample
105 of households. This survey selected 20,250 households for data collection and collected 20,127
106 data from ever-married women aged 15-49 covering both rural and urban areas (response rate
107 99%). The detailed about the survey's sampling methods, study design and data collection can be
108 found from the following link (([https://dhsprogram.com/methodology/survey/survey-display-
109 536.cfm](https://dhsprogram.com/methodology/survey/survey-display-536.cfm))). The current study included 12006 currently married women who delivered at least one
110 child.

111 A flow chart of selecting sample for the current study is depicted in Figure 1.

112

113



114

Figure 1: A flowchart of sample selection

115 ***Exposure, Outcome and covariate variables:***

116 The effect of women empowerment on current contraception use was evaluated in the present
117 study. The categories of exposure, outcome and covariate variables were presented in Table 1.

118

119

120

121

122 **Table 1: Description of exposure, outcome and covariate variables**

Exposure variables	
Women empowerment	Based on SWPER index, 3 domains
	i. Decision making (low, medium, high empowerment)
	ii. Attitude to violence (low, medium high empowerment)
	iii. Social independence (low, medium high empowerment)
Outcome variables	Current contraceptive use (Yes, No)
	Methods of contraceptive use (No method, Folkloric method, traditional method, modern method)
Covariates	Respondent's age (<24 years, 24-34 years, >34 years)
	Education (Primary/no education, secondary, higher)
	Religion (Islam, others)
	Household wealth (Poorest, poorer, middle, richer, richest)
	Area of residence (rural, urban)
	Divisions
	Husband's education (primary/No education, secondary, higher)
	Number of living child (<2, 2-4, >4)

123

124 ***Estimation of women empowerment:***

125 In the present study, women empowerment was measured using a survey-based women's
 126 empowerment (SWPER) index (18, 19). SWPER index was developed and validated for global
 127 (including Bangladesh) which contains three domains: social independence (based on education,
 128 age at marriage and first child, and differences in age and education with partners), decision
 129 making (question related making decision in the household and to the women's work) and attitudes
 130 to violence (includes five questions about respondent's opinion on husband beating). In total 14
 131 items were extracted from the DHS survey data to measure the women empowerment and principal
 132 component analysis (PCA) was used to construct the index. To measure the index, items were
 133 recoded as described in supplementary Table 1 and calculate the standard score of these three

134 domains using the formula of SWPER index. Standard cut-off points were used suggested by the
135 author to categorize the domains of SWPER into low, medium and high empowerment.

136 ***Statistical analysis:***

137 Data were recoded, cleaned, and analyzed by using Excel and SPSS software version 23.0.
138 Descriptive statistics were performed to present frequencies and percentages of variables. A Chi-
139 square test was performed to evaluate the correlation of outcome variables with predictors.
140 Multinomial logistic regression model was used to assess the factors affecting the utilization of
141 contraceptive and methods of using contraception. Adjusted odd ratio are presented to assess the
142 strengths of association. A hierarchical logistic regression was also performed where each of
143 variables is entered separately to assess the influence of women empowerment on contraception
144 use.

145 Structural equation model (SEM) was performed to test the hypothesized relationships of
146 independent and dependent variables. The SEM analysis was performed based on maximum
147 likelihood method and covariance matrix using SPSS Amos 23.0. Fitness of model was estimated
148 using Root Mean Square Error of Approximation (RMSEA), Bentler's Comparative Fit Index
149 (CFI) and Tucker-Lewis Fit Index (TLI) (20). A p value less than 0.05 is considered as statistically
150 significant.

151 ***Ethical consideration:***

152 The study was based on secondary data and data were publicly available in DHS website.
153 Therefore, there is no need further ethical approval. Data accessibility is gained by sending a
154 request to DHS website.

155 **Results:**

156 Table 2 presents the frequency and percentage of variables studied in the present study. There was
 157 a slightly equal distribution of respondents among administrative division and residential area.
 158 More than 88% of the women were Muslim. The weighted prevalence of higher education among
 159 respondents was 20.4% and husband was 25.5%. More than one-third women had 2-4 living
 160 children. The wealth index showed that more than half of the women belonged from middle to
 161 richest family.

162 **Table 2: Characteristics of respondents**

Variables	Frequency (%)	Variables	Frequency (%)
Division		Wealth Index	
Barisal	1023 (8.5)	Poorest	1470 (12.2)
Chittagong	1723 (14.4)	Poorer	1897 (15.8)
Khulna	1736 (14.5)	Middle	2343 (19.5)
Dhaka	1843 (15.4)	Richer	2709 (22.6)
Mymensingh	1298 (10.8)	Richest	3587 (29.9)
Rajshahi	1538 (12.8)		
Rangpur	1494 (12.4)		
Sylhet	1351 (11.3)		
Residence		Religion	
Rural	4916 (40.9)	Muslim	10669 (88.9)
Urban	7090 (59.1)	Others	1337 (11.1)
Respondent's education		Age of respondents	
No education/primary	3768 (31.4)	<24 years	2701 (22.5)
Secondary	5789 (48.2)	24-35 years	5493 (45.8)
Higher	2449 (20.4)	>35 years	3812 (31.8)
Husband's education		Number of children	
No education/primary	4414 (36.8)	<2	1205 (10.0)
Secondary	4534 (37.8)	2-4	9451 (78.7)
Higher	3058 (25.5)	>4	1350 (11.2)

163
 164 Table 3 depicts the percentage distribution of outcome variables in regard to the main exposure
 165 variables. Contraception use among women was not found to associate with women's attitude to
 166 violence and social independence. Women empowerment in decision making showed significant
 167 association with contraception use as well as with method of contraceptives. More than 90%

168 women who had medium to high decision-making power in family used different types of
 169 contraceptive methods.

170

171 **Table 3: Distribution of outcome variables based on exposure variables**

Variables	Contraception use (%)			Method of contraception use (%)			
	No	Yes	p-value	Folkloric	Traditiona l	Modern	p- value
Attitude to violence							
Low	1.3	1.7	0.147	6.7	2.0	1.7	0.175
Medium	12.5	11.9		6.7	13.0	11.7	
High	86.2	86.4		86.6	85.0	86.6	
Decision making							
Low	5.7	5.6	<0.01	6.7	4.6	5.8	<0.01
Medium	78.2	82.3		93.3	83.1	82.1	
High	16.2	12.1		0	12.3	12.1	
Social Independence							
Low	96.1	0.4	0.229	93.3	95.4	97.0	0.081
Medium	3.5	2.9		6.7	4.0	2.7	
High	0.4	96.7		0	0.6	0.3	

172 p-value derived from Chi-square test.

173

174 Women’s age, education and partner’s education showed significant association with
 175 contraceptive use and method of contraceptives. Compared with women <24 years of age, women
 176 >35 years of age were 1.64 times (AOR: 1.64, 95% CI:1.45-1.85) more likely to use contraceptive
 177 and 1.09 times (AOR: 1.09, 95% CI: 1.05-1.14) more likely to use modern contraceptive methods.
 178 Highly educated mothers had 1.35 times (AOR: 1.35, 95% CI: 1.15-1.58) higher possibility of use
 179 contraceptives compared with women who did not receive any formal education or completed
 180 primary education. Area of residence was also showed significant association with contraceptive
 181 use and method of contraception use. Muslim women had 0.81 (AOR: 0.81, 95% CI: 0.70-0.93)
 182 times likely to use contraception compared with others religion’s women. Women who belonged

183 from richest family, their chance of using contraception and modern contraceptive methods were
 184 increased by 0.78 times (AOR: 0.78, 95%CI: 0.65-0.92) and 0.92 times (AOR: 0.92, 95% CI: 0.86-
 185 0.97) respectively.

186 **Table 4: Factors affecting the use of contraception**

Variables	Contraception use AOR	Method of contraception use AOR
Residence		
Rural	1	1
Urban	1.53 (1.38-1.68)**	1.16 (1.12-1.19)**
Age of respondents		
<24 years	1	1
24-35 years	1.66 (1.49-1.85)**	1.18 (1.14-1.23)**
>35 years	1.64 (1.45-1.85)**	1.09 (1.05-1.14)**
Religion		
Muslim	0.81 (0.70-0.93)**	0.93 (0.89-0.98)*
Others	1	1
Wealth Index		
Poorest	1	1
Poorer	0.94 (0.80-1.11)	0.97 (0.92-1.03)
Middle	0.85 (0.73-1.003)	0.95 (0.90-1.01)
Richer	0.83 (0.70-0.97)*	0.93 (0.89-0.99)*
Richest	0.78 (0.65-0.92)**	0.92 (0.86-0.97)**
Respondent's education		
No education/primary	1	1
Secondary	1.04 (0.94-1.16)	1.02 (0.98-1.06)
Higher	1.35 (1.15-1.58)**	1.11 (1.05-1.17)**
Husband's education		
No education/primary	1	1
Secondary	0.82 (0.74-0.91)**	0.93 (0.89-0.96)**
Higher	1.11 (0.95-1.27)	1.01 (0.95-1.05)
Number of children		
<2	1	1
2-4	4.05 (2.93-5.62)**	5.63 (5.01-6.34)
>4	5.33 (4.23-5.33)	1.11 (1.13-1.89)

187 AOR; Adjusted odd ratios

188 **Significant at <0.01 level,

189 *Significant at <0.05 level

190

191 The association of women empowerment in terms of attitude to violence, decision making power,

192 and social independence with contraception use was shown in Table 5 after controlling the

193 covariates (individual, and locality factors). The findings from hierarchical logistic regression
 194 showed that women who had medium level attitude to violence and social independence had
 195 significantly 0.715 times (AOR: 0.715, 95% CI: 0.515-0.994) and 0.81 times (AOR: 0.81, 95%CI:
 196 0.655-1.002) greater chance to use contraception than women who had low level of attitude to
 197 violence and social independence respectively. The odd of using contraception was increased by
 198 0.772-fold (AOR: 0.771, 95% CI: 0.641-0.930) when women had high level of decision-making
 199 power in family.

200 **Table 5: Association of women empowerment with contraception use controlling covariates**
 201 **factors.**

Variables	Use of contraception	
	AOR	95% Confidence interval
Block 1: Individual factors		
Respondent's age, education, religion, wealth index, husband's education		
Block 2: Locality factors		
Division and residence		
Block 3: Women empowerment		
Attitude to violence		
Low	1	
Medium	0.715*	0.515-0.994
High	0.746	0.545-1.021
Decision making		
Low	1	
Medium	1.059	0.899-1.247
High	0.772**	0.641-0.930
Social Independence		
Low	1	
Medium	0.810*	0.655-1.002
High	0.912	0.511-1.625

202 AOR, Adjusted odds ratio (derived from the final block of hierarchical logistic regression
 203 analysis)

204 **Significant at <0.01 level.

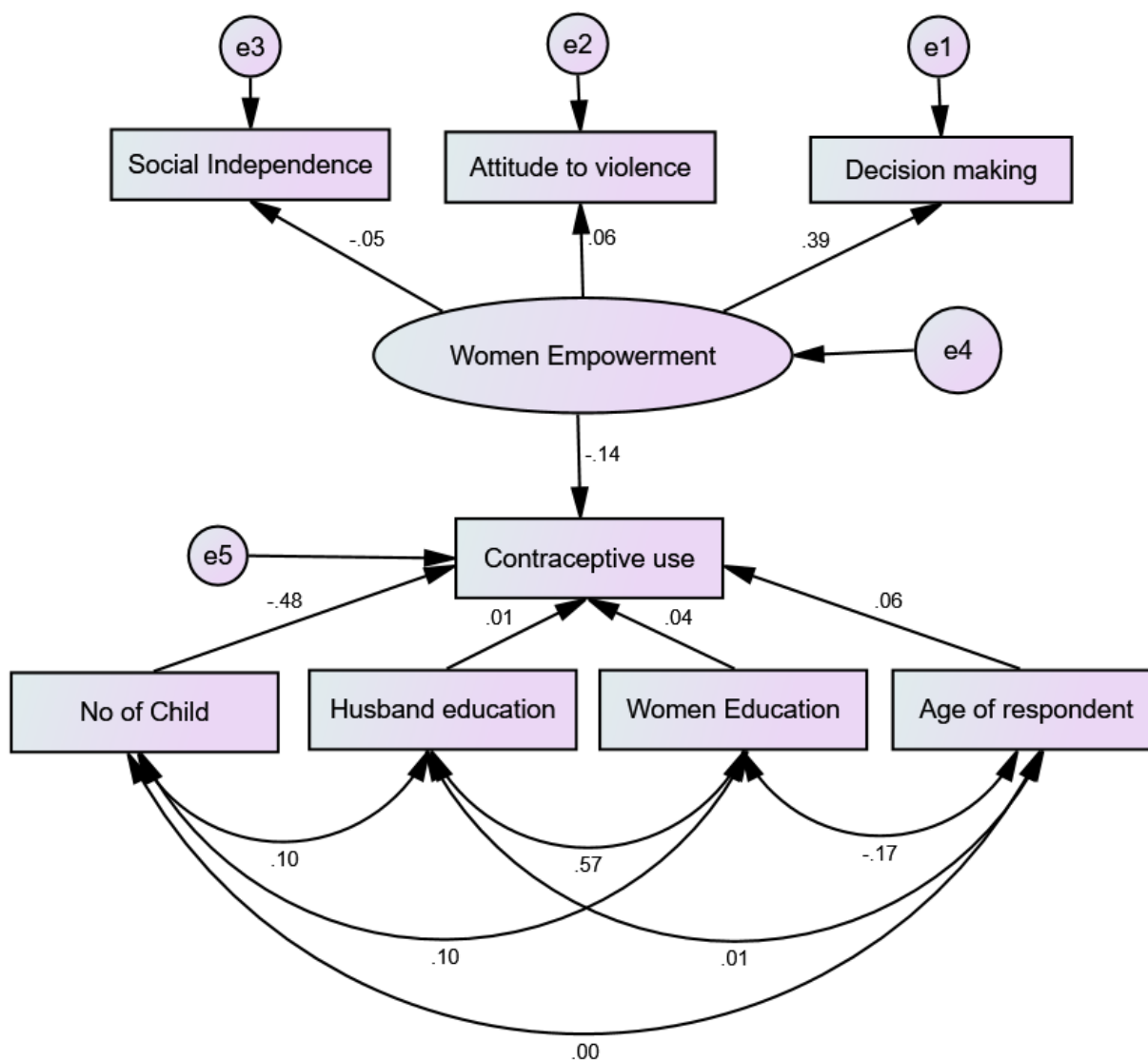
205 *Significant at <0.05 level.

206

207

208 **Structural Equation Modelling:**

209 In the SEM analysis, the demographic variables that are associated with key relationships between
210 women empowerment and contraceptive use have been controlled in the model. The model (Figure
211 2) showed that the value of Goodness of fit (GFI) = 0.999, CFI = 0.995 and RMSEA = 0.017 which
212 are considered as good fit model (20, 21). The study assessed the effect of women empowerment
213 in terms of social independence, attitude to violence and decision making on contraception use.
214 Controlling demographic data (no. of child, women and husband's education and women's age),
215 the effect of overall women empowerment on contraception use was negative and non-significant
216 ($\beta = -0.138, p = 0.193$) (Figure 2).



217

218

Figure 2: Theoretical full structural model

219 **Discussion:**

220 For the betterment of national demographical outcomes, women's rights and issues in terms of

221 women empowerment have been identified as a major contributor. This present study addressed

222 all the aspects of women empowerment and its relationship with contraception use as well as the

223 factors that affecting the women's use of contraception and different methods of contraception.

224 This paper is unique as it assesses different aspects of women empowerment through a theoretical
225 structural model.

226 This study indicated a positive correlation between age and contraceptive use intervals, with older
227 women more likely to use oral contraceptives, which is consistent with studies that were conducted
228 in Ethiopia (22) and India (23). This mirrors a general trend, which is that women of a certain age
229 are more motivated to engage in family planning and better comprehend the repercussions of doing
230 so. With the increase of age, number of living children, betterment of socio-economic condition
231 and women literacy, women decision making power increases (24-26). The findings of this study
232 match with the findings of the National Family Health Survey-4 (23) in India, which showed that
233 education plays in assisting women to receive knowledge about contraceptives so that they can
234 make decisions that are based on accurate information (23).

235 A low rate of contraceptive use among Muslim women found in this study which are in line with
236 those found in Rwanda (27). According to Habyarimana and Ramroop (2018) (27), this
237 underscores the significance of taking a culturally sensitive approach when promoting, respecting,
238 and addressing issues related to the influence of religion and cultural beliefs on family structure.
239 The relationship between family wealth and an increased usage of contraceptives lends credence
240 to the idea that financial resources play an essential role, which is in line with the findings of earlier
241 research (13, 27).

242 The focus of the study on empowerment factors, such as aggressive intentions, decision-making
243 power, and social autonomy, includes research carried out in India, which reveals that
244 empowerment is a powerful factor in increasing contraceptive use among women (28-30). The
245 findings indicate favorable benefits, such as moderate empowerment on contraceptive use, and the

246 relevance of women's decision-making capacity in family planning (28, 29). Similar to the
247 findings of a study that was carried out in Nigeria (30), this study revealed that enabling factors do
248 not appear to impact whether women use contraception medication has a role, but also
249 contraceptive techniques (30). techniques of contraception: This study demonstrated that enabling
250 factors do not appear to affect whether women use contraception. This shows how critically
251 important it is for family planning initiatives to take into consideration the empowerment of
252 women.

253 The results of this study demonstrate the multifaceted nature of the factors that influence women's
254 usage of contraceptives. These findings are backed by a large body of previous research. Continue
255 to have a substantial impact on contraceptive use are socio-demographic factors such as age, level
256 of education, religious affiliation, and socioeconomic standing. In addition, women's
257 empowerment, as assessed by their attitudes, decision-making power, and social independence,
258 plays a vital role in promoting the use of contraception and even in shaping the form of
259 contraception that is selected. This empowerment is measured by women's social independence,
260 decision-making capacity, and views.

261 In order for initiatives to be successful in promoting family planning and the use of contraceptives,
262 socio-demographic and empowerment-related characteristics should be taken into consideration.
263 According to Wado et al. 2019 (22) and Dhak et al. 2019 (23), educational efforts that target
264 younger women and women with lower levels of education are particularly effective at raising
265 awareness and knowledge about contraceptives. According to Habyarimana and Ramroop (2018)
266 (27), it is essential to employ tactics that are culturally sensitive in order to address the influence
267 of religion and cultural beliefs on decisions on family planning (28-30). Research has shown that
268 empowerment initiatives that promote women's participation in decision-making processes and

269 fight against gender-based violence can contribute to higher contraceptive use and improved
270 reproductive health outcomes. According to Agha et al. (2021) (31), increasing the use of
271 contemporary contraceptives also requires an understanding of social norms and an effort to
272 change those norms.

273 **Strengths and limitations:**

274 Our study has three main strengths. The first is use of multidimensional SWPER index to find out
275 the relationship between women empowerment and contraception use while other studies used few
276 components of empowerment. Secondly, we used the SEM analysis which helps us to explain the
277 relationship as well as to examine the direct and indirect relationships of the variables. The third
278 one is that we used nationally representative data covering both rural and urban regions and also
279 had large sample size that reduced the biasness in the study.

280 The study is not without limitations. Although the study used multidimensional SWPER index for
281 estimating women empowerment, it is difficult to capture all the domains of women empowerment
282 in a single index. As the study used secondary data, there are some limitations in data analysis due
283 to available variables. We used data of women who are at reproductive age and married which
284 should not be generalized for women of all ages. Finally, the study can not conclude causal-effect
285 relationship due to being cross sectional study.

286 **Conclusion:**

287 This research highlights the significance of women's empowerment in influencing contraceptive
288 use in Bangladesh. The study emphasizes that women empowerment alone cannot influence the
289 use of contraception. Age, education, and socioeconomic level are all important predictors of
290 contraceptive use. Cultural and religious influences, especially among Muslim women, emphasize

291 the importance of culturally sensitive approaches to family planning activities. Women’s decision-
292 making capacity, social autonomy and husband’s involvement are important enabling variables in
293 increasing contraceptive use. Initiatives that promote women’s participation in decision-making
294 and reduce gender-based violence can improve reproductive health outcomes. Tailored
295 interventions that take socioeconomic and empowering variables into account are critical for
296 promoting family planning and reproductive health in Bangladesh. More research is required to
297 investigate these processes in greater depth and develop targeted tactics.

298 **Funding statement:** This research did not receive any specific grant from funding agencies in the
299 public, commercial, or not-for-profit sectors.

300 **Acknowledgments:** Authors are thankful to all the principal investigators of the Demographic
301 Health Survey for their relentless efforts in producing such vital information for community-based
302 estimates.

303 **Data availability:** Data generated for analysis of the present study will be made available upon
304 request.

305 **References:**

- 306 1. Malhotra A, Schuler SR, Boender C, editors. Measuring women’s empowerment as a variable in
307 international development. background paper prepared for the World Bank Workshop on Poverty and
308 Gender: New Perspectives; 2002: The World Bank Washington, DC.
- 309 2. Klima CS. Unintended pregnancy: consequences and solutions for a worldwide problem. *Journal*
310 *of Nurse-Midwifery*. 1998;43(6):483-91.
- 311 3. Victora CG, Requejo JH, Barros AJ, Berman P, Bhutta Z, Boerma T, et al. Countdown to 2015: a
312 decade of tracking progress for maternal, newborn, and child survival. *The Lancet*.
313 2016;387(10032):2049-59.
- 314 4. Germain A, Kyte R. *The Cairo consensus: the right agenda for the right time: International*
315 *Women's Health Coalition* New York, NY; 1995.
- 316 5. Schuler SR, Hashemi SM, Riley AP. The influence of women's changing roles and status in
317 Bangladesh's fertility transition: evidence from a study of credit programs and contraceptive use. *World*
318 *Development*. 1997;25(4):563-75.
- 319 6. Blanc AK. The effect of power in sexual relationships on sexual and reproductive health: an
320 examination of the evidence. *Studies in family planning*. 2001;32(3):189-213.
- 321 7. Uddin J, Pulok MH, Sabah MN-U. Correlates of unmet need for contraception in Bangladesh:
322 does couples' concordance in household decision making matter? *Contraception*. 2016;94(1):18-26.
- 323 8. National Institute of Population Research and Training (NIPORT) II. *Bangladesh Demographic and*
324 *Health Survey 2017–18*. . Dhaka, Bangladesh.; 2020.

- 325 9. Lasee A, Becker S. Husband-wife communication about family planning and contraceptive use in
326 Kenya. *International family planning perspectives*. 1997;15-33.
- 327 10. Bawah AA. Spousal communication and family planning behavior in Navrongo: a longitudinal
328 assessment. *Studies in family planning*. 2002;33(2):185-94.
- 329 11. Bogale B, Wondafrash M, Tilahun T, Girma E. Married women's decision making power on
330 modern contraceptive use in urban and rural southern Ethiopia. *BMC public health*. 2011;11(1):1-7.
- 331 12. Economic UNDoI, Economic UNDF, Information S, Analysis P. *World population prospects:*
332 *United Nations, Department of International, Economic and Social Affairs; 1984.*
- 333 13. Biswas TK, Kabir M. Women's Empowerment and Current use of Contraception in Bangladesh.
334 *Asia-Pacific Journal of Rural Development*. 2002;12(2):1-13.
- 335 14. Hasan MS, Dana GPT, Jafrin N. Determinants of contraceptive use in rural Bangladesh. *Journal of*
336 *Population and Development*. 2014;1:53-72.
- 337 15. Hameed W, Azmat SK, Ali M, Sheikh MI, Abbas G, Temmerman M, et al. Women's
338 empowerment and contraceptive use: the role of independent versus couples' decision-making, from a
339 lower middle income country perspective. *PloS one*. 2014;9(8):e104633.
- 340 16. Shariful Islam S, Mainuddin A. Relationship between income generating activities of rural
341 women and their reproductive health behavior in Bangladesh. *Rural and Remote Health*. 2015;15(4):53-
342 63.
- 343 17. Islam AZ. Factors affecting modern contraceptive use among fecund young women in
344 Bangladesh: does couples' joint participation in household decision making matter? *Reproductive*
345 *health*. 2018;15(1):1-9.
- 346 18. Ewerling F, Raj A, Victora CG, Hellwig F, Coll CV, Barros AJ. SWPER Global: A survey-based
347 women's empowerment index expanded from Africa to all low-and middle-income countries. *Journal of*
348 *global health*. 2020;10(2).
- 349 19. Ewerling F, Lynch JW, Victora CG, van Eerdewijk A, Tyszler M, Barros AJ. The SWPER index for
350 women's empowerment in Africa: development and validation of an index based on survey data. *The*
351 *Lancet Global Health*. 2017;5(9):e916-e23.
- 352 20. Hatcher L, O'Rourke N. *A step-by-step approach to using SAS for factor analysis and structural*
353 *equation modeling: Sas Institute; 2013.*
- 354 21. Hu Lt, Bentler PM. Cutoff criteria for fit indexes in covariance structure analysis: Conventional
355 criteria versus new alternatives. *Structural equation modeling: a multidisciplinary journal*. 1999;6(1):1-
356 55.
- 357 22. Wado YD, Gurmu E, Tilahun T, Bangha M. Contextual influences on the choice of long-acting
358 reversible and permanent contraception in Ethiopia: a multilevel analysis. *PloS one*.
359 2019;14(1):e0209602.
- 360 23. Dhak B, Saggurti N, Ram F. Contraceptive use and its effect on Indian women's empowerment:
361 evidence from the National Family Health Survey-4. *Journal of Biosocial Science*. 2020;52(4):523-33.
- 362 24. Haque M, Islam TM, Tareque MI, Mostofa M. Women empowerment or autonomy: A
363 comparative view in Bangladesh context. *Bangladesh e-journal of Sociology*. 2011;8(2):17-30.
- 364 25. Acharya DR, Bell JS, Simkhada P, Van Teijlingen ER, Regmi PR. Women's autonomy in household
365 decision-making: a demographic study in Nepal. *Reproductive health*. 2010;7(1):1-12.
- 366 26. Saleem S, Bobak M. Women's autonomy, education and contraception use in Pakistan: a
367 national study. *Reproductive health*. 2005;2(1):1-8.
- 368 27. Habyarimana F, Ramroop S. Spatial analysis of socio-economic and demographic factors
369 associated with contraceptive use among women of childbearing age in Rwanda. *International journal of*
370 *environmental research and public health*. 2018;15(11):2383.

- 371 28. León FR, Lundgren R, Sinai I, Sinha R, Jennings V. Increasing literate and illiterate women's met
372 need for contraception via empowerment: a quasi-experiment in rural India. *Reproductive health*.
373 2014;11:1-10.
- 374 29. Nadeem M, Malik MI, Anwar M, Khurram S. Women decision making autonomy as a facilitating
375 factor for contraceptive use for family planning in Pakistan. *Social Indicators Research*. 2021;156:71-89.
- 376 30. OlaOlorun FM, Anglewicz P, Moreau C. From non-use to covert and overt use of contraception:
377 Identifying community and individual factors informing Nigerian women's degree of contraceptive
378 empowerment. *PloS one*. 2020;15(11):e0242345.
- 379 31. Agha S, Morgan B, Archer H, Paul S, Babigumira JB, Guthrie BL. Understanding how social norms
380 affect modern contraceptive use. *BMC Public Health*. 2021;21(1):1-11.

381