

## 1 **Respiratory rates among rural Gambian children: a community-based cohort study**

2 *Polycarp Mogeni<sup>1,2,†,\*</sup>, Sharon Amima<sup>3,†</sup>, Jennifer Gunther<sup>1</sup>, Margaret Pinder<sup>4,5</sup>, Lucy S. Tusting<sup>6</sup>, Umberto*  
3 *D’Alessandro<sup>5</sup>, Simon Cousens<sup>1</sup>, Steve W. Lindsay<sup>4</sup>, John Bradley<sup>1</sup>*

4

5 1. Department of Infectious Disease Epidemiology, London School of Hygiene & Tropical Medicine,  
6 London, UK.

7 2. Kenya Medical Research Institute (KEMRI), Nairobi, Kenya.

8 3. Department of Food Science, Nutrition and Technology, University of Nairobi, Nairobi, Kenya.

9 4. Department of Biosciences, Durham University, Durham, UK.

10 5. Medical Research Council’s (MRC) Unit The Gambia at the London School of Hygiene and  
11 Tropical Medicine, Banjul, The Gambia.

12 6. Department of Disease Control, London School of Hygiene & Tropical Medicine, London, UK.

13

14 †Joint First Authors.

15 \*Author for correspondence: [pkambona11@gmail.com](mailto:pkambona11@gmail.com)

16

### 17 **Abstract**

18 **Background:** Although ranges of normal respiratory rates (RR) have been described for children  
19 under five years old living in the tropics, there are few datasets recording rates in older children.  
20 The present study was designed to capture the changes in RR with age and to examine its  
21 association with nutritional status and environmental factors.

22 **Methods:** A cohort of rural Gambian children aged from six months to 14 years had their RR  
23 recorded during home visits twice weekly during two annual rainy seasons. Measurements were  
24 made by trained field assistants using an electronic timer during a one-minute period. Age, sex,  
25 nutritional status, health status, time of day of data collection were recorded. A generalized  
26 additive model for location, scale and shape was used to construct the RR reference curves and  
27 a linear mixed effect model used to examine factors associated with RR. We also assessed the  
28 agreement between repeat measurements taken from a subset of study subject.

29 **Results:** A total of 830 children provided 67,512 RR measurements. The median age was 6.07  
30 years (interquartile range (IQR), 4.21–8.55) and 400 (48.2%) were female. The centile chart  
31 showed a marked nonlinear decline in RR measurements with increasing age up to six years old,  
32 after which the decline was minimal (predicted median RR of 31 breaths/minute (IQR: 29–34)  
33 among one-year-olds, 22 breaths/minute (IQR: 21–23) among six-year-olds and 21

34 breaths/minute (IQR: 21-22) among 13-year-olds. Age (non-linear effect,  $p < 0.001$ ), stunting (0.84  
35 breaths/minute [95%CI: 0.40-1.28,  $p < 0.001$ ]), ambient temperature (0.38 breaths/minute  
36 [95%CI: 0.33-0.42,  $p < 0.001$ ] for every  $1^{\circ}\text{C}$  increase in ambient temperature) and time of day when  
37 RR measurements were taken (non-linear effect,  $p < 0.001$ ) were independent predictors of  
38 respiratory rate. Strikingly, children with signs of illness were associated with higher intra-  
39 observer variability.

40 **Interpretation:** We constructed a RR reference chart for children aged one to 13 years and  
41 proposed a cutoff of  $>26$  breaths/minute for raised RR among children aged  $>5$  years bridging an  
42 important gap in this age group. Although time of data collection, nutritional status and ambient  
43 temperature were predictors of RR, the evidence is not clinically significant to warrant a change  
44 in the current WHO guidelines owing to the prevailing uncertainty in the measurement of RR.  
45 The finding that RR between repeat measurements were more variable among children with  
46 signs of illness suggests that a single RR measurements may be inadequate to reliably assess the  
47 status of sick children - a population in which accurate diagnosis is essential to enable targeted  
48 interventions with lifesaving treatment.

49  
50  
51  
52  
53  
54  
55  
56  
57  
58  
59  
60  
61  
62

## 63 **Background**

64 Childhood respiratory illness constitutes the largest cause of post neonatal mortality globally, a  
65 burden that could be considerably reduced by timely diagnosis and treatment (1–3). Respiratory  
66 rate (RR) is an important vital sign monitored in clinical settings for clinical deterioration and  
67 respiratory distress, and is used to support the diagnosis of severe respiratory infections (4–6).  
68 As an indicator of respiratory function, healthcare professionals use RR to provide timely  
69 intervention, manage disease, and monitor treatment effect (6).

70 The World Health Organization (WHO) defines tachypnoea (abnormally rapid breathing) as a RR  
71  $\geq 60$  breaths per minute among children aged  $< 2$  months,  $RR \geq 50$  among children aged between  
72 2 to  $< 12$  months, and  $RR \geq 40$  among children aged 12 months to  $< 60$  months (4). However, RR  
73 measurement in children is often challenging (7,8) and currently there are no guidelines for  
74 children older than 5 years. RRs are typically counted manually in low-resource settings as  
75 breaths per minute using electronic timers and counting beads (9). Though manual measurement  
76 is often the gold standard in rural sub-Saharan Africa (sSA), it can be imprecise and subject to  
77 intra-observer variability compounded by whether the child is asleep or awake at the time when  
78 measurements are taken (8,10). In response to calls for better pneumonia diagnosis (11,12),  
79 automated RR counting aids are increasingly under development and evaluation (13–16).  
80 However, there are concerns that some of these aids are out of reach or are unsuitable in  
81 resource limited settings (8).

82 RR measurements are subject to variations associated with both intrinsic factors (e.g. child age,  
83 gender, underlying health conditions, child state (asleep, awake or agitated), underlying health  
84 conditions) and extrinsic factors that include environmental and socioeconomic factors (8,17).  
85 Younger children have higher and more variable RR measurements compared to older children  
86 whilst those residing at higher altitudes have higher RR measurements, likely due to lower oxygen  
87 concentration at higher altitudes (17–19).

88 Here, we report the results of 92 consecutive rounds of community follow-up of children  
89 recruited to participate in a trial investigating the effect of improved housing on the incidence of  
90 clinical malaria in The Gambia (20). The study was undertaken over two consecutive malaria  
91 transmission seasons between June and December of 2016 and 2017 (20). We utilized a large

92 longitudinal dataset of RR measurements taken twice weekly to construct the RR-for-age  
93 reference curves for children aged 1-13 years of age and provide a comprehensive description of  
94 the predictors of RR among children residing in rural Gambia; a country at low altitude. This is  
95 one of the few studies to report RR in children aged >5 years and the first to do so among rural  
96 Gambian children.

## 97 **Methods**

### 98 **Study setting**

99 The study was conducted in villages in the Upper River Region of The Gambia, located in the east  
100 of the country. This is an area of Sudanian savanna at an altitude of less than 50 m above sea  
101 level. The mean annual rainfall is 876 mm which falls mainly between May and October, followed  
102 by a long dry season. The enrolled villages are located on both the north and south banks of the  
103 River Gambia; an area that experiences an average maximum daily temperature of 36°C and a  
104 minimum of 18°C. Further details have been reported previously (21).

### 105 **Study design and participants**

106 Data came from a household randomized controlled trial involving children aged 6 months to 14  
107 years, who were recruited to a study investigating the effect of improved housing on the  
108 incidence of clinical malaria (20,21). The study took place over a two-year period in which clinical  
109 follow-ups were conducted over two consecutive malaria transmission seasons (June to  
110 December of 2016 and 2017) (21). Details of the study design, data collection, consenting,  
111 supervision and training procedures have been presented previously in a protocol (21) and in the  
112 main study results (20). Briefly, alongside the primary trial endpoint of clinical malaria,  
113 respiratory rate data collection was done twice weekly on every participating child by trained  
114 health care providers equipped with electronic timers. The data were collected because of  
115 concerns that the housing intervention could cause respiratory illness due to restricting airflow  
116 through the house. The final trial results, however, showed no evidence of an increase in  
117 respiratory illness in the intervention group (20). Assessment was done twice weekly (21) to  
118 increase case detection rate given the high burden of childhood pneumonia in west Africa (22).  
119 The process involved the development of a standardized protocol containing guidelines for

120 collecting all clinical measurements which included recording respiratory rate measurements  
121 when the child was awake and calm. If any measurement was  $\geq 50$  breaths/minute for children  
122 under 1 year,  $\geq 40$  breaths/minute for children aged 1 to 5 years or  $\geq 25$  breaths/minute among  
123 children aged 5 to 14 years of age, a repeat measurement was taken at least 5 minute after the  
124 initial measurement by the same staff member (20). Measurements were taken by observing the  
125 child's naked chest movement, where one rise and fall of the chest was counted as one breath  
126 and recorded as the number of breaths per minute.

## 127 **Statistical analysis**

### 128 **Construction of reference curves**

129 The main analytical objective was to construct a RR reference chart that can be used to inform  
130 clinical management of respiratory illnesses in low altitude areas. The outcome of interest was  
131 the RR measurement derived from children who were not reported to be sick during data  
132 collection in the household. Here, we excluded data from children who were unwell, defined by  
133 signs of respiratory illness (cough, chest indrawing, wheeze or difficulty in breathing), fever  
134 (axillary temperature  $\geq 37.5^\circ\text{C}$ ), signs of gastrointestinal illness (vomiting and diarrhea), child  
135 reported as being unwell by caregiver or on medication (Figure 1). In addition, we excluded one  
136 outlier value (recorded as 181 breaths/minute) that is not plausible for the child's age and  
137 because the measurement was not accompanied by a second measurement as per the  
138 requirements of the protocol (21).

139 We conducted an exploratory analysis to examine potential outliers in the dataset and visually  
140 inspected the association between respiratory rate and age using the lowess function and scatter  
141 plots. Smooth percentile curves of respiratory rate as a function of age were constructed using  
142 the generalized additive models for location, scale and shape (GAMLSS) (23). The Box-Cox-t  
143 model (24) was the best fit to our data among the plausible GAMLSS models (the Box-Cox-t, Box-  
144 Cox-Power-Exponential and Box-Cox-Cole-green) that were examined in a data driven model  
145 selection procedure (25,26). The selected model was used to construct the reference chart (at -  
146 2 standard deviation (SD), -1SD, median, 1SD and 2SD) of RR as a function of age. The results

147 were truncated at 1 and 13 years to reduce edge effects and the impact of the limited number of  
148 study participants <1 (n=8) and >13 years (n=32) of age.

### 149 **Predictors of respiratory rate**

150 The second analytical objective was to examine the predictors of respiratory rate with the aim of  
151 identifying potential subgroups that may influence the accuracy of the constructed reference  
152 chart. We considered nutritional status, rainfall, minimum and maximum daily temperature as a  
153 proxy for ambient temperature, time of day when the measurement was taken, sex and the  
154 randomization arm as potential predictors in the regression models. We linked the respiratory  
155 rate data to three cross-sectional anthropometric surveys conducted in December 2016, June  
156 2017 and December 2017. The survey datasets were linked to the child's corresponding  
157 respiratory rate observations that were collected within a month of each survey to reduce  
158 potential bias resulting from linking observations that are far apart in time. Anthropometric z-  
159 scores were calculated using the 2006 and 2007 WHO growth references for children age <5-  
160 years (25) and children aged ≥5-years (26) respectively. We defined stunting as a height-for-age  
161 z-score (HAZ) <-2, underweight as weight-for-age z-score (WAZ) <-2 and wasting as weight-for-  
162 height/length z-score (WHZ) <-2. Daily rainfall, minimum and maximum temperatures were  
163 obtained from the meteorological department in Basse Santa Su town.

164 Associations between respiratory rate and potential predictor variables were assessed using  
165 mixed-effects linear regression with random effects for each child. Age was categorized following  
166 the trend observed in the lowess curve to accommodate the non-linear trend. The likelihood ratio  
167 test statistic was used to compare a model with random intercepts only and the model with both  
168 random intercepts and slopes. Effect estimates and their corresponding 95% confidence intervals  
169 (95% CI) were used to assess the magnitude and direction of effect for the various predictor  
170 variables included in the regression models.

171 In an ancillary analysis, we assessed repeatability of RR measurements by examining the degree  
172 of agreement between repeat measurements that were taken within 5 minutes of each other  
173 using the Bland-Altman method of estimating the degree of agreement (28). These repeat  
174 measurements were taken only when the first respiratory rate measurement was deemed raised

175 for the child's age (20). We also examined the predictors of the absolute difference between  
176 paired repeat measurements using the linear regression model. Intra-observer variability was  
177 defined as the variation in repeated measurements by the same observer and used the intra-  
178 class correlation coefficient (ICC) to assess reliability of repeat measurements. The GAMLSS  
179 package (23) in R statistical environment was used to estimate the centile curves whilst the  
180 remaining analyses were conducted using Stata 17 (Stata Corp, College Station, TX, USA).

### 181 **Role of the funding source**

182 The funders had no role in study design, data collection, data analysis, interpretation of results,  
183 writing of the manuscript or the decision to submit the manuscript for publication. The  
184 corresponding author had full access to the data and made the final decision to submit the  
185 manuscript for publication following written approval from the co-authors.

186

### 187 **Results**

#### 188 **Reference curves**

189 A total of 830 children recruited to the study contributed 67,512 observations in the analyses.  
190 The median age was 6.07 years (interquartile range (IQR), 4.21 – 8.55) and 400 (48.2) were  
191 female. Details of study participants and the number of observations contributed at each stage  
192 of the analysis are presented in Figure 1. The RR for age reference chart was constructed using  
193 60,127 observations from 823 children (Figure 2). There was a marked nonlinear decline in RR  
194 with increasing age between 1 and 6 years of age, after which the decline was minimal (the  
195 predicted median RR was 31 breaths/minute [IQR: 29–34] among 1 year-olds, 22 breaths/minute  
196 [IQR: 21–23] among 6 year-olds and 21 breaths/minute [IQR: 21-22] among 13 year-olds). The  
197 pre-specified cutoff for raised RR (>+2SD) declined from 46 breaths/minute among 1 year-olds to  
198 27 breaths/minute among 6 year-olds and to 25 breaths/minute among 13 year-olds (Table 1,  
199 Figure 2).

#### 200 **Respiratory rate among sick children**

201 A total of 4,119 (6.4%) observations from sick children were excluded from the construction of  
202 the reference chart. The median age of sick children was 5.5 years (IQR: 3.6–8.0) and 2016

203 (48.9%) observations were from female subjects. The distribution of observations from children  
204 with and without signs of illness by age and RR are presented in the Supplementary Table 1 and  
205 Supplementary Figure 1.

### 206 **Predictors of respiratory rate among community children without signs of illness**

207 The prevalence of stunting (1 to 14 years of age) was 21.1% (95%CI: 19.4% to 22.9%), prevalence  
208 of underweight (1 to 10 years of age) was 22.6% (95%CI: 20.6% to 24.6%) and prevalence of  
209 wasting (1 to <5 years of age) was 8.0% (95%CI: 5.9% to 10.6%). Females contributed 1,037  
210 (47.7%) observations in the 3 cross-sectional surveys. The distribution of observations over age  
211 and RR measurements are presented in Supplementary Figure 1A and 1C, and Table 1.

212 In a pooled adjusted mixed-effects linear regression (n=800 children, contributing 12,215  
213 observations); age (non-linear effect), stunting, minimum daily temperature (a proxy for ambient  
214 temperature) and time of day of data collection were associated with respiratory rate (Table 2).  
215 On average, stunting was associated with an 0.84 breaths/minute (95%CI: 0.40-1.28, p<0.001)  
216 increase in RR. A 1°C increase in minimum daily temperature was associated with a 0.38  
217 breaths/minute (95%CI: 0.33-0.42, p<0.001) increase in RR. In addition, there was a nonlinear  
218 relationship between RR rate measurements and the time of the day when the measurements  
219 were taken (Table 2). On average RR measurements increased from 0700hrs to ~1500hrs after  
220 which the measurements declined towards 2000hrs (p<0.001). There was no evidence that being  
221 female or enrolled in the intervention group was associated with RR in the adjusted regression  
222 models (Table 2). As observed in the GAMLSS model and consistent with previous studies (18,19),  
223 older children had lower RR measurements in both unadjusted and the adjusted regression  
224 model (Table 2). That is, compared to children aged 1-to-2-year-old; children aged 2-to-3-years,  
225 3-to-4 years, 4-to-6 years, 6-to-8 years and 8-to-13 years of age had RRs that were 0.38, 2.15,  
226 5.14, 9.56 and 10.64 breaths/minute lower respectively (Table 2).

### 227 **Intra-observer variability in respiratory rate measurement**

228 A total of 2,311 paired measurements were used in the reliability assessment. 1,159 (50.2%) of  
229 the paired measurements were from female subjects and 460 (19.9%) were from children with  
230 signs of illness. Overall, the ICC for RR among all children with paired measurements (age 1 to 13



231 years) was 0.93 (95%CI: 0.93-0.94) whilst the ICC for children without signs of illness was 0.84  
232 (95%CI: 0.83-0.86). Among children aged less than 5 years, the ICC was 0.94 (95%CI: 0.92-0.96)  
233 while the estimate for children above 5 years and <14 years was 0.83 (95%CI: 0.82-0.84). The  
234 Bland-Altman plots of intra-observer reliability in RR measurement are presented in Figure 3A  
235 and Figure 3B. The mean difference between paired RR measurements was small in both children  
236 with (1.49 breaths/minute [95%CI: -0.74 to 3.71]) and without (1.04 breaths/minute [95%CI: -  
237 3.94 to 6.02]) signs of illness (Figure 3A and Figure 3B). However, the variability between the  
238 paired RR measurements among sick children (SD=2.54) was higher than children without  
239 (SD=1.13) signs of illness ( $p<0.001$ ).

240

## 241 **Discussion**

242 The WHO definition of tachypnoea does not address in any detail children above 5 years of age  
243 (29). To construct reference charts for children aged 1 to 13 years we used a longitudinal dataset  
244 of RR measurements derived from a large cohort of rural Gambian children enrolled in a trial  
245 investigating the impact of improved housing on the incidence of malaria (20,21). These data  
246 were linked to potential environmental exposures, demographic factors and three cross-  
247 sectional surveys on participant's nutritional status. RR measurements were done to monitor  
248 pneumonia, a potential serious adverse effect, since there was concern that the housing  
249 modifications in the intervention arm would increase respiratory disease – however, this was  
250 shown not to be the case (20,21). The constructed RR-for-age reference chart among children  
251 without signs of illness decreased with increasing age and is consistent with previous findings  
252 (17–19).

253 On average, stunting was associated with a small increase in RR consistent with a recent  
254 multicounty pneumonia trial (30) in which stunting was associated with a RR of 1 breath/minute  
255 higher at admission to hospital. Whereas the multicounty trial assessed children presenting with  
256 signs of pneumonia (30), our study examined RR measurements among mainly healthy children  
257 in the community. Stunted children have been reported to have lower ventilatory reserve than  
258 children with normal height for age (31). Stunting has been associated with reduced lung function  
259 resulting from the impaired lung development (32–34) while chronic undernutrition predisposes

260 children to severe illnesses such as pneumonia that can potentially lead to long-term effects on  
261 lung development (33–36). Therefore, the relatively higher RRs observed among stunted children  
262 may be compensatory for inadequate ventilation. Our results, however, contrast with a previous  
263 study conducted in The Gambia that documented a relatively lower RR measurements among  
264 stunted children with signs of pneumonia (37) thus highlighting the need for further research to  
265 confirm these findings.

266 Higher ambient temperature was associated with increased RR measurements consistent with  
267 previous studies in both humans and animal models (38). The higher RR observed at higher  
268 ambient temperatures may be a homeostatic mechanism by which the body maintains its normal  
269 temperature (38). On average, RR measurements taken in the afternoon were higher compared  
270 to those taken in the morning or in the evening. Higher RR in the afternoon may be a result of  
271 the cumulative increase in the child’s activity during the day. Increased activity (exercise) has  
272 been associated with an increase in oxygen requirements leading to an increase in RR (39).  
273 Another potential explanation is that ambient temperature increases towards the afternoon and  
274 may thus confound the time when measurements were taken. However, the precise ambient  
275 temperature when RR measurements were taken was not available for these analyses.

276 Our study has important strengths. First, there are few studies that provide a comprehensive  
277 assessment of the factors associated with RR using a large cohort of children who were actively  
278 followed up to document their clinical disease status, nutritional status and other potential  
279 environmental risk factors. Second, the RR measurements were taken from children drawn from  
280 randomly selected households in the community and therefore the findings are generalizable to  
281 the community. In contrast, most RR studies have relied on cross-sectional studies where data  
282 are collected in hospital or daycare centers and therefore difficult to generalize to the  
283 community. Third, although the repeat RR measurements were only taken among children whose  
284 initial measurements were considered raised for age, the intra-observer reliability index (ICC) in  
285 both the overall and subgroup analyses were  $>0.8$  suggesting good to excellent reliability (40). In  
286 addition, we did not find any systematic differences between the repeat measurement as shown  
287 in the Bland Altman plot (Figure 3A and Figure 3B). The variability between the RR repeat  
288 measurements was higher among children with signs of illness than among children without signs

289 of illness ( $p < 0.001$ ), highlighting a potential limitation of utilizing a single RR measurement for  
290 the classification of danger signs associated with respiratory illness. A limitation to our study is  
291 that data were collected from a single site in rural Gambia, a country situated less than 60m  
292 above sea-level with high seasonal temperatures. Therefore, the interpretation of our results  
293 may be limited to areas with similar geographical and climatic characteristics. However, our study  
294 responds to the call for more data from various geographical regions to guide policy development  
295 on diagnosis of respiratory illness (7,17).

296 In conclusion, the current WHO tachypnea guidelines do not address in any detail children above  
297 five years of age (29). We constructed centile charts using data collected from a low altitude area  
298 in The Gambia and propose a cutoff of  $>26$  breaths/minute for raised RR among children  $>5$  years  
299 and below 13 years of age. We demonstrate that age, time of data collection, nutritional status  
300 and ambient temperature were associated with RR. However, the small change in RR associated  
301 with nutritional status, time of day when RR measurements were taken and ambient  
302 temperature does not warrant a change in the current WHO tachypnea guidelines for children  $>$   
303 one year and  $<5$  years of age. The finding that RR differences between paired repeat  
304 measurements were more variable among children with signs of illness raises concerns over the  
305 reliability of a single RR measurements among children with signs of illness - a population in need  
306 of accurate diagnosis to enable targeted interventions with lifesaving treatment.

### 307 **Ethical Approval**

308 Ethical approval for the study was granted by The Gambia Government/Medical Research Council  
309 Joint Ethics Committee (reference: SCC 1390v3) and the School of Biological and Biomedical  
310 Sciences Ethics Committee, Durham University, Durham, UK (reference: SBBS/EC/ 1401/RooPfs).  
311 Written informed consent was obtained from the head of the household and/or the parent or  
312 guardian of all participating children. The study was conducted in accordance with the  
313 International Conference on Harmonization Tripartite Guideline for Good Clinical Practice and  
314 the Declaration of Helsinki.

315

### 316 **Conflict of interests**

317 The authors declare no conflict of interests

### 318 **Data sharing**

319 Access to clinical data requires a formal application to the Scientific Coordinating Committee of  
320 the Medical Research Council Unit The Gambia (MRCG) and the Joint Gambian Government's and  
321 MRCG Ethics Committee in The Gambia at [https://www.mrc.gm/scientific-coordinating-](https://www.mrc.gm/scientific-coordinating-committee/)  
322 [committee/](https://www.mrc.gm/scientific-coordinating-committee/)

### 323 **Acknowledgments**

324 The study was funded by the MRC-DfID-Wellcome Trust (Global Health Trials; MR/M007383/1).  
325 SWL is supported by the Global Challenges Research Fund's BOVA Network (Global Challenges  
326 Research Fund (BB/R00532X/1) supported by the Biotechnology and Biological Sciences Research  
327 Council and Medical Research Council). JB received support from the UK Medical Research  
328 Council (MRC) and the UK Foreign, Commonwealth and Development Office (FCDO) under the  
329 MRC/FCDO Concordat agreement and is also part of the EDCTP2 programme supported by the  
330 European Union (Grant Ref: MR/R010161/1). We are grateful for the support of the villagers, the  
331 village health workers, the regional health team, and staff in the health clinics. We also thank the  
332 MRCG at the London School of Hygiene and Tropical Medicine for hosting this study in Basse Field  
333 Station and their technical and logistical support, especially the nurse field assistants and their  
334 supervisors; and the data supervisor, manager, and data entry staff. We are also grateful to  
335 members of the Trial Steering Committee and the Data Safety and Monitoring Board.

336

### 337 **Authors Contributions:**

338 **Conceptualization and design:** PM, JG, MP, UD', SL, JB

339 **Performed the experiments:** MP, UD', SL, JB

340 **Data curation:** PM, SA, JG, JB

341 **Funding acquisition:** MP, SL

342 **Project administration and investigation:** MP, SL

343 **Formal data analysis:** PM, SA

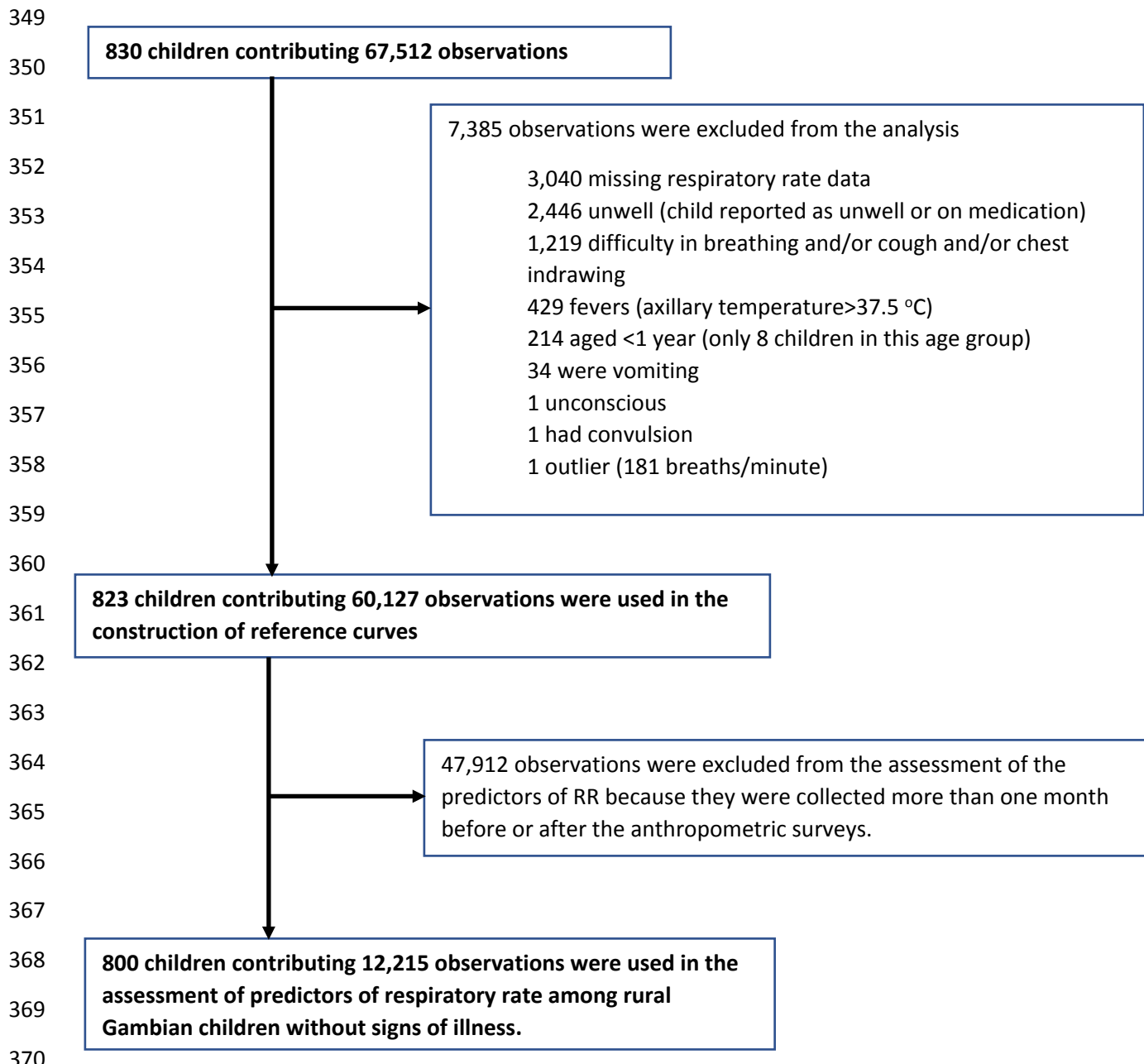
344 **Writing- original draft:** PM, SA

345 **Writing- review and editing:** PM, SA, JG, MP, LT, UD', SC, SL, JB,

346

347 **All authors have read, and confirm that they meet, ICMJE criteria for authorship.**

348

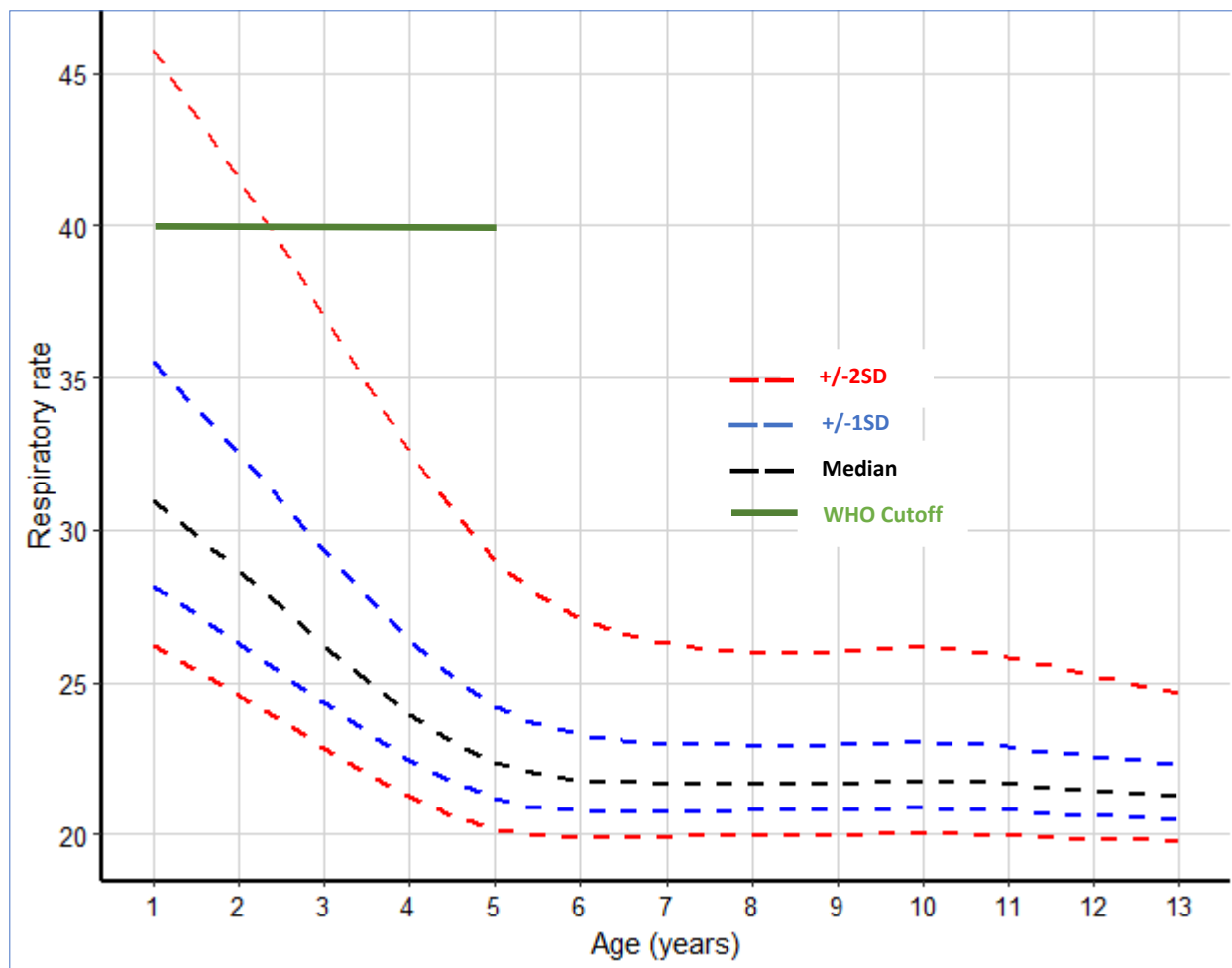


371 **Figure 1.** Number of participants, observations contributed and reasons for exclusion at each analysis  
372 stage.

373

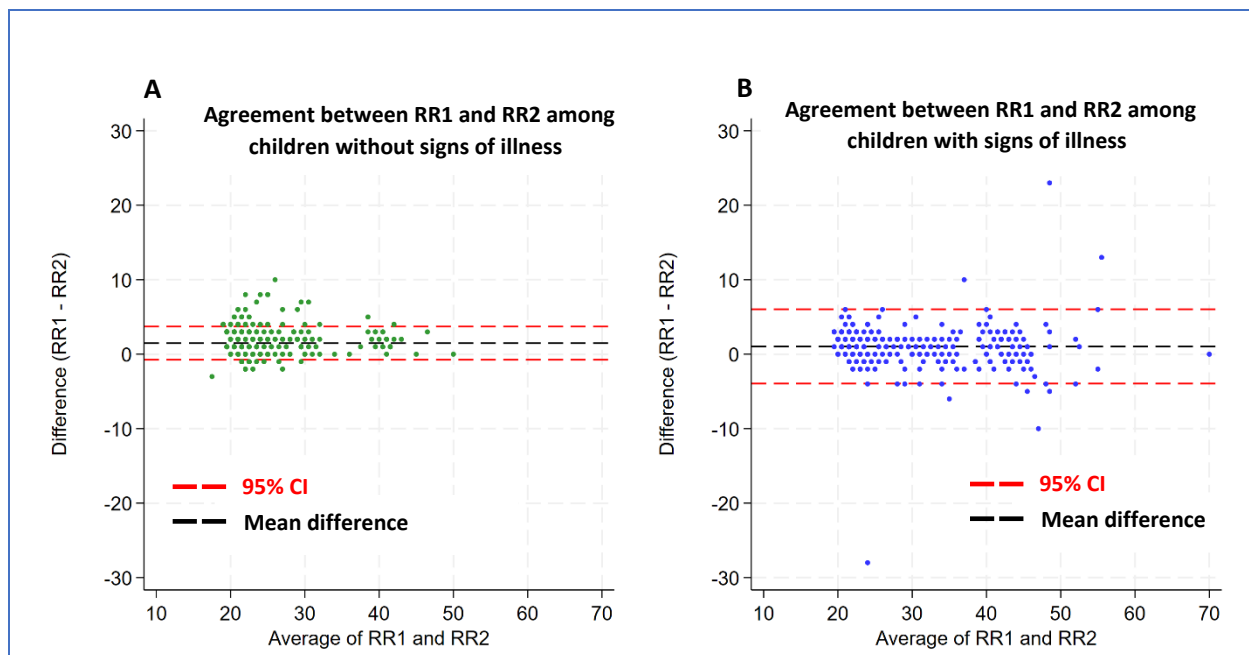
374

375



376  
377 **Figure 2:** Respiratory rate (breaths/minute) for age reference curves. The black dashed line represents the  
378 median RR measurements, the blue dashed lines represent the 1SD from the median, the red dashed lines  
379 represent 2SD from the median and the green continuous line represents the WHO cutoff for tachypnoea  
380 (40 breaths/minute) among children aged >12 months and <5 years. Note that the WHO does not provide  
381 guidelines on tachypnoea among children aged above 5 years.

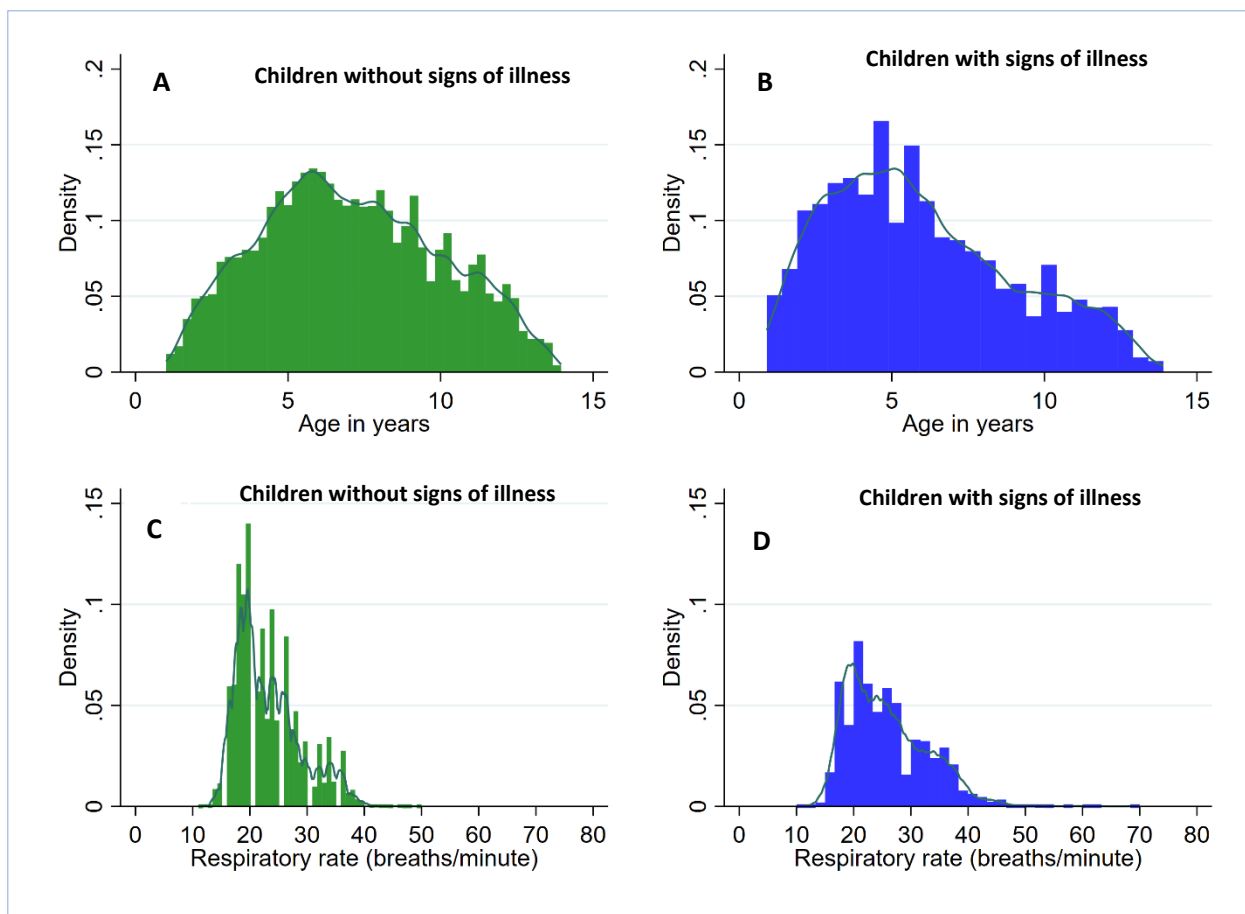
382  
383



384

385 **Figure 3: Bland-Altman plots for RR measurements.** Panel A displays data from children without signs of  
386 illness whilst panel B displays data from children with signs of illness. The black dash line represents the  
387 level of bias while the red dash lines display the 95% confidence intervals. RR1 is the first RR measurement  
388 while RR2 is the second RR measurement taken in that order. The mean difference in RR measurements  
389 was 1.49 breaths/minute (95%CI: -0.74 to 3.71) for children without signs of illness and 1.04  
390 breaths/minute (95%CI: -3.94 to 6.02) for children with signs of illness.





391

392 **Supplementary Figure 1: Histograms of the distribution of study participants by age and respiratory**  
393 **rate measurements.** Panels A and B show the distribution of age among children without and children  
394 with signs of illness respectively and panels C and D show the distribution of respiratory rate among  
395 children without and children with signs of illness respectively.

396

397

398

399

400

401

402

403

404

405 **Table 1:** Summary of children without signs of illness and their corresponding crude and model  
 406 estimate of 2SD cutoff for raised respiratory rate (RR).

Age in Years	Crude estimate of respiratory rate cutoff				GAMLSS estimate of RR cutoff		
	Observations	Number of Children	Median (IQR)	2SD (Cutoff for raised RR)	Age in Years	Median (IQR)	2SD (Model cutoff for raised RR)
1 to <1.5	410	20	32 (28 - 35)	41	1	31 (29 - 34)	46
1.5 to <2.5	2609	89	32 (28 - 35)	40	2	29 (27 - 31)	42
2.5 to <3.5	4308	142	30 (26 - 34)	38	3	26 (25 - 28)	37
3.5 to <4.5	5273	177	28 (24 - 33)	38	4	24 (23 - 25)	33
4.5 to <5.5	7180	218	25 (21 - 30)	38	5	22 (22 - 23)	29
5.5 to <6.5	7875	237	21 (19 - 25)	30	6	22 (21 - 23)	27
6.5 to <7.5	6753	209	20 (19 - 24)	29	7	22 (21 - 22)	26
7.5 to <8.5	6593	193	20 (18 - 23)	28	8	22 (21 - 22)	26
8.5 to <9.5	5821	167	20 (18 - 24)	28	9	22 (21 - 22)	26
9.5 to <10.5	4600	142	19 (18 - 22)	29	10	22 (21 - 22)	26
10.5 to <11.5	3881	118	20 (18 - 22)	28	11	22 (21 - 22)	26
11.5 to <12.5	3092	92	19 (18 - 22)	28	12	21 (21 - 22)	25
12.5 to <13.5	1478	49	19 (17 - 22)	26	13	21 (21 - 22)	25

407  
 408  
 409  
 410  
 411  
 412  
 413  
 414  
 415  
 416  
 417  
 418  
 419  
 420  
 421  
 422

423 **Table 2:** Predictors of respiratory rate. Model 1 presents results of the univariable mixed effect  
 424 linear regression model and Model 2 presents results from the final multivariable mixed effect  
 425 linear regression model. Sex and the randomization group have been included as potential  
 426 confounders in the multivariable model.

Covariate	Model 1: Univariable Analysis (n=12215)			Model 2: Multivariable Analysis (n=12215)		
	Change in RR	95%CI	P-value	Change in RR	95%CI	P-value
<b>Age</b> (ref, 1 to <2 years)	ref			ref		
2 to <3 years	-0.18	-1.87 to 1.50	0.831	-0.38	-2.22 to 1.48	0.698
3 to <4 years	-1.77	-3.45 to -0.08	0.041	-2.15	-4.04 to -0.27	0.025
4 to <6 years	-4.93	-6.49 to -3.37	<0.001	-5.14	-6.93 to -3.35	<0.001
6 to <8 years	-9.15	-10.65 to -7.65	<0.001	-9.56	-11.32 to -7.81	<0.001
8 to <13 years	-10.12	-11.61 to -8.62	<0.001	-10.64	-12.39 to -8.90	<0.001
<b>Sex</b> (ref, Male)	ref			ref		
Female	0.11	-0.50 to 0.72	0.720	0.21	-0.12 to 0.54	0.213
<b>Randomization</b> (ref, Control)	ref			ref		
Treatment	0.45	-0.15 to 1.06	0.142	0.19	-0.14 to 0.52	0.258
<b>Time</b> when RR measurements were taken (ref, 07:00hr to 09:00hr)	ref			ref		
09:00hr to 11:00hr	0.36	-0.07 to 0.78	0.099	0.36	0.06 to 0.65	0.017
11:00hr to 13:00hr	0.68	0.15 to 1.20	0.011	0.78	0.46 to 1.10	<0.001
13:00hr to 15:00hr	1.09	0.49 to 1.69	<0.001	1.02	0.61 to 1.42	<0.001
15:00hr to 17:00hr	0.34	-0.19 to 0.87	0.208	0.26	-0.12 to 0.64	0.183
17:00hr to 20:00hr	-0.15	-0.76 to 0.46	0.629	0.51	0.07 to 0.94	0.023
<b>Rainfall</b> (mm) on the day of data collection	0.03	0.02 to 0.04	<0.001	0.001	-0.01 to 0.01	0.935
<b>Minimum daily temp</b> (°C)	0.31	0.26 to 0.36	<0.001	0.38	0.33 to 0.42	<0.001
<b>Stunting</b> (ref, normal)	Ref					
Stunted	2.46	1.66 to 3.27	<0.001	0.84	0.40 to 1.28	<0.001
<b>Wasting</b> (ref, normal)	ref					
Wasted	-0.74	-2.27 to 0.80	0.347			
<b>Underweight</b> (ref, normal)	ref					
Underweight	0.47	-0.24 to 1.18	0.191			

427 **Footnotes**

- 428 i. Time is defined as the time when the respiratory rate measurement was taken and was restricted to between  
 429 07:00hr and 20:00hr respectively.  
 430 ii. Rainfall (mm) and ambient temperature on the day when RR measurements were taken were retrospectively  
 431 extracted from the meteorological department in Basse Santa Su town and linked to the RR dataset.

432 *iii. Stunting was defined as the height/length for age z-score <-2 (HAZ/LAZ < -2), wasting was defined as the*  
 433 *weight for height z-score < -2 (WHZ < -2) and underweight was defined as the weight for age < -2 (WAZ <*  
 434 *2).*

435

436 **Supplementary Table 1:** Summary of children with signs of illness, their corresponding observations and  
 437 median respiratory rate segregated by age

Age in Years	Children with signs of illness			Children without signs of illness		
	Number of observations (%)	Number of children	Median RR (IQR)	Observations	Number of Children	Median (IQR)
1 to <1.5	60 (13)	16	35 (32 - 39)	410	20	32 (28 - 35)
1.5 to <2.5	407 (13)	77	32 (29 - 36)	2609	89	32 (28 - 35)
2.5 to <3.5	492 (10)	113	30 (27 - 34)	4308	142	30 (26 - 34)
3.5 to <4.5	514 (9)	136	28 (25 - 34)	5273	177	28 (24 - 33)
4.5 to <5.5	566 (7)	156	26 (22 - 30)	7180	218	25 (21 - 30)
5.5 to <6.5	510 (6)	153	22 (19 - 24)	7875	237	21 (19 - 25)
6.5 to <7.5	369 (5)	133	20 (19 - 24)	6753	209	20 (19 - 24)
7.5 to <8.5	315 (5)	116	20 (18 - 24)	6593	193	20 (18 - 23)
8.5 to <9.5	227 (4)	91	20 (19 - 24)	5821	167	20 (18 - 24)
9.5 to <10.5	231 (5)	84	20 (18 - 23)	4600	142	19 (18 - 22)
10.5 to <11.5	176 (4)	63	19 (18 - 21)	3881	118	20 (18 - 22)
11.5 to <12.5	179 (5)	66	20 (19 - 23)	3092	92	19 (18 - 22)
12.5 to <13.5	67 (4)	26	20 (18 - 22)	1478	49	19 (17 - 22)

438

439

440

441

442

443

444

445

446

447

448

449

450

451

452

## 453 References

- 454 1. Liu L, Oza S, Hogan D, Chu Y, Perin J, Zhu J, et al. Global, regional, and national causes of under-5  
455 mortality in 2000-15: an updated systematic analysis with implications for the Sustainable  
456 Development Goals. *Lancet Lond Engl*. 2016 Dec 17;388(10063):3027–35.
- 457 2. Bryce J, Boschi-Pinto C, Shibuya K, Black RE, WHO Child Health Epidemiology Reference Group. WHO  
458 estimates of the causes of death in children. *Lancet Lond Engl*. 2005 Apr 26;365(9465):1147–52.
- 459 3. GBD 2015 LRI Collaborators. Estimates of the global, regional, and national morbidity, mortality, and  
460 aetiologies of lower respiratory tract infections in 195 countries: a systematic analysis for the Global  
461 Burden of Disease Study 2015. *Lancet Infect Dis*. 2017 Nov;17(11):1133–61.
- 462 4. WHO. Revised WHO Classification and Treatment of Pneumonia in Children at Health Facilities:  
463 Evidence Summaries [Internet]. Geneva: World Health Organization; 2014 [cited 2023 Feb 24].  
464 (WHO Guidelines Approved by the Guidelines Review Committee). Available from:  
465 <http://www.ncbi.nlm.nih.gov/books/NBK264162/>
- 466 5. Lanata CF, Rudan I, Boschi-Pinto C, Tomaskovic L, Cherian T, Weber M, et al. Methodological and  
467 quality issues in epidemiological studies of acute lower respiratory infections in children in  
468 developing countries. *Int J Epidemiol*. 2004 Dec 1;33(6):1362–72.
- 469 6. Nicolò A, Massaroni C, Schena E, Sacchetti M. The Importance of Respiratory Rate Monitoring: From  
470 Healthcare to Sport and Exercise. *Sensors*. 2020 Nov 9;20(21):6396.
- 471 7. Goodman D, Crocker ME, Pervaiz F, McCollum ED, Steenland K, Simkovich SM, et al. Challenges in  
472 the diagnosis of paediatric pneumonia in intervention field trials: recommendations from a  
473 pneumonia field trial working group. *Lancet Respir Med*. 2019 Dec 1;7(12):1068–83.
- 474 8. Ginsburg AS, Lenahan JL, Izadnegahdar R, Ansermino JM. A Systematic Review of Tools to Measure  
475 Respiratory Rate in Order to Identify Childhood Pneumonia. *Am J Respir Crit Care Med*. 2018 May  
476 1;197(9):1116–27.
- 477 9. Noordam AC, Barberá Laínez Y, Sadruddin S, van Heck PM, Chono AO, Acaye GL, et al. The use of  
478 counting beads to improve the classification of fast breathing in low-resource settings: a multi-  
479 country review. *Health Policy Plan*. 2015 Jul;30(6):696–704.
- 480 10. Spence H, Baker K, Wharton-Smith A, Mucunguzi A, Matata L, Habte T, et al. Childhood pneumonia  
481 diagnostics: community health workers' and national stakeholders' differing perspectives of new  
482 and existing aids. *Glob Health Action*. 2017 May 9;10(1):1290340.
- 483 11. Ginsburg AS, Sadruddin S, Klugman KP. Innovations in pneumonia diagnosis and treatment: a call to  
484 action on World Pneumonia Day, 2013. *Lancet Glob Health*. 2013 Dec 1;1(6):e326–7.
- 485 12. Källander K, Young M, Qazi S. Universal access to pneumonia prevention and care: a call for action.  
486 *Lancet Respir Med*. 2014 Dec 1;2(12):950–2.

- 487 13. Baker K, Maurel A, Ward C, Getachew D, Habte T, McWhorter C, et al. Automated Respiratory Rate  
488 Counter to Assess Children for Symptoms of Pneumonia: Protocol for Cross-Sectional Usability and  
489 Acceptability Studies in Ethiopia and Nepal. *JMIR Res Protoc*. 2020 Mar 30;9(3):e14405.
- 490 14. Rawat A, Ameha A, Karlström J, Tadesse L, Legesse Negeri E, Detjen A, et al. Health System  
491 Considerations for Community-Based Implementation of Automated Respiratory Counters to  
492 Identify Childhood Pneumonia in 5 Regions of Ethiopia: A Qualitative Study. *Int J Health Policy*  
493 *Manag [Internet]*. 2023 Oct 2 [cited 2023 Oct 21]; Available from:  
494 [https://www.ijhpm.com/article\\_4512.html](https://www.ijhpm.com/article_4512.html)
- 495 15. Tack B, Vita D, Mbaki TN, Lunguya O, Toelen J, Jacobs J. Performance of Automated Point-of-Care  
496 Respiratory Rate Counting versus Manual Counting in Children under Five Admitted with Severe  
497 Febrile Illness to Kisantu Hospital, DR Congo. *Diagnostics*. 2021 Nov;11(11):2078.
- 498 16. Baker K, Ward C, Maurel A, de Cola MA, Smith H, Getachew D, et al. Usability and acceptability of a  
499 multimodal respiratory rate and pulse oximeter device in case management of children with  
500 symptoms of pneumonia: A cross-sectional study in Ethiopia. *Acta Paediatr*. 2021;110(5):1620–32.
- 501 17. Crocker ME, Hossen S, Goodman D, Simkovich SM, Kirby M, Thompson LM, et al. Effects of high  
502 altitude on respiratory rate and oxygen saturation reference values in healthy infants and children  
503 younger than 2 years in four countries: a cross-sectional study. *Lancet Glob Health*. 2020  
504 Mar;8(3):e362–73.
- 505 18. Herbert A, Pearn J, Wilson S. Normal Percentiles for Respiratory Rate in Children—Reference Ranges  
506 Determined from an Optical Sensor. *Children*. 2020 Oct 2;7(10):160.
- 507 19. Fleming S, Thompson M, Stevens R, Heneghan C, Plüddemann A, Maconochie I, et al. Normal ranges  
508 of heart rate and respiratory rate in children from birth to 18 years of age: a systematic review of  
509 observational studies. *The Lancet*. 2011 Mar;377(9770):1011–8.
- 510 20. Pinder M, Bradley J, Jawara M, Affara M, Conteh L, Correa S, et al. Improved housing versus usual  
511 practice for additional protection against clinical malaria in The Gambia (RooPfs): a household-  
512 randomised controlled trial. *Lancet Planet Health*. 2021 Apr;5(4):e220–9.
- 513 21. Pinder M, Conteh L, Jeffries D, Jones C, Knudsen J, Kandeh B, et al. The RooPfs study to assess  
514 whether improved housing provides additional protection against clinical malaria over current best  
515 practice in The Gambia: study protocol for a randomized controlled study and ancillary studies.  
516 *Trials*. 2016 Dec;17(1):275.
- 517 22. Mackenzie GA, Hill PC, Jeffries DJ, Hossain I, Uchendu U, Ameh D, et al. Effect of the introduction of  
518 pneumococcal conjugate vaccination on invasive pneumococcal disease in The Gambia: a  
519 population-based surveillance study. *Lancet Infect Dis*. 2016 Jun;16(6):703–11.
- 520 23. Stasinopoulos DM, Rigby RA. Generalized Additive Models for Location Scale and Shape (GAMLSS) in  
521 R. *J Stat Softw*. 2008;23:1–46.
- 522 24. Rigby RA, Stasinopoulos DM. Using the Box-Cox t distribution in GAMLSS to model skewness and  
523 kurtosis. *Stat Model*. 2006;6(3):209–29.

- 524 25. Borghi E, de Onis M, Garza C, Van den Broeck J, Frongillo EA, Grummer-Strawn L, et al. Construction  
525 of the World Health Organization child growth standards: selection of methods for attained growth  
526 curves. *Stat Med*. 2006 Jan 30;25(2):247–65.
- 527 26. de Onis M, Onyango AW, Borghi E, Siyam A, Nishida C, Siekmann J. Development of a WHO growth  
528 reference for school-aged children and adolescents. *Bull World Health Organ*. 2007 Sep;85(9):660–  
529 7.
- 530 27. Fitzmaurice: Longitudinal data analysis - Google Scholar [Internet]. [cited 2022 Nov 18]. Available  
531 from:  
532 [https://scholar.google.com/scholar\\_lookup?author=G+Fitzmaurice&author=M+Davidian&author=G+Verbeke&author=G+Molenberghs+&publication\\_year=2009&title=Longitudinal+Data+Analysis](https://scholar.google.com/scholar_lookup?author=G+Fitzmaurice&author=M+Davidian&author=G+Verbeke&author=G+Molenberghs+&publication_year=2009&title=Longitudinal+Data+Analysis).  
533
- 534 28. Bland JM, Altman DG. Statistical methods for assessing agreement between two methods of clinical  
535 measurement. *Lancet Lond Engl*. 1986 Feb 8;1(8476):307–10.
- 536 29. WHO. Pocket book of primary health care for children and adolescents: guidelines for health  
537 promotion, disease prevention and management from the newborn period to adolescence  
538 [Internet]. World Health Organization. Regional Office for Europe; 2022 [cited 2023 Oct 21].  
539 Available from: <https://apps.who.int/iris/handle/10665/352485>
- 540 30. Moschovis PP, Addo-Yobo EOD, Banajeh S, Chisaka N, Christiani DC, Hayden D, et al. Stunting is  
541 associated with poor outcomes in childhood pneumonia. *Trop Med Int Health TM IH*. 2015  
542 Oct;20(10):1320–8.
- 543 31. Nguyen TTD, Hoo AF, Lum S, Wade A, Thia LP, Stocks J. New reference equations to improve  
544 interpretation of infant lung function. *Pediatr Pulmonol*. 2013 Apr;48(4):370–80.
- 545 32. Narayanan M, Owers-Bradley J, Beardsmore CS, Mada M, Ball I, Garipov R, et al. Alveolarization  
546 Continues during Childhood and Adolescence. *Am J Respir Crit Care Med*. 2012 Jan 15;185(2):186–  
547 91.
- 548 33. Tennant PWG, Gibson GJ, Pearce MS. Lifecourse predictors of adult respiratory function: results  
549 from the Newcastle Thousand Families Study. *Thorax*. 2008 Sep;63(9):823–30.
- 550 34. Mukhopadhyay S, Macleod KA, Ong TJ, Ogston SA. “Ethnic” variation in childhood lung function may  
551 relate to preventable nutritional deficiency. *Acta Paediatr Oslo Nor 1992*. 2001 Nov;90(11):1299–  
552 303.
- 553 35. Kaali S, Jack DW, Prah RKD, Chillrud SN, Mujtaba MN, Kinney PL, et al. Poor early childhood growth  
554 is associated with impaired lung function: Evidence from a Ghanaian pregnancy cohort. *Pediatr*  
555 *Pulmonol*. 2022 Sep;57(9):2136–46.
- 556 36. Barker DJ, Godfrey KM, Fall C, Osmond C, Winter PD, Shaheen SO. Relation of birth weight and  
557 childhood respiratory infection to adult lung function and death from chronic obstructive airways  
558 disease. *BMJ*. 1991 Sep 21;303(6804):671–5.
- 559 37. Falade AG, Tschappeler H, Greenwood BM, Mulholland EK. Use of simple clinical signs to predict  
560 pneumonia in young Gambian children: the influence of malnutrition. 1995;73:6.

561 38. Zila I, Calkovska A. Effects of Elevated Body Temperature on Control of Breathing. Acta Medica  
562 Martiniana. 2011 Mar 1;11(Supplement-1):24–30.

563 39. Nicolò A, Massaroni C, Passfield L. Respiratory Frequency during Exercise: The Neglected  
564 Physiological Measure. Front Physiol [Internet]. 2017 [cited 2023 Jul 3];8. Available from:  
565 <https://www.frontiersin.org/articles/10.3389/fphys.2017.00922>

566 40. Koo TK, Li MY. A Guideline of Selecting and Reporting Intraclass Correlation Coefficients for  
567 Reliability Research. J Chiropr Med. 2016 Jun;15(2):155–63.

568

569

570

571

572