

1 **Short-term associations of diarrhoeal diseases in children with temperature**
2 **and precipitation in seven low- and middle-income countries from Sub-**
3 **Saharan Africa and South Asia in the Global Enteric Multicenter Study**

4

5 Nasif Hossain^{1,2*}, Lina Madaniyazi¹, Chris Fook Sheng Ng^{1,2}, Dilruba Nasrin^{4,5}, Xerxes Tesoro Seposo³,
6 Paul L.C. Chua², Rui Pan², Abu Syed Golam Faruque⁶, Masahiro Hashizume^{1,2}

7 **Affiliations**

- 8 1. Department of Global Health, School of Tropical Medicine and Global Health, Nagasaki
9 University, Nagasaki, Japan.
10 2. Department of Global Health Policy, School of International Health, Graduate School of Medicine,
11 The University of Tokyo, Tokyo, Japan.
12 3. Department of Hygiene, Graduate School of Medicine, Hokkaido University, Sapporo, Japan.
13 4. Center for Vaccine Development and Global Health, University of Maryland School of Medicine,
14 Baltimore, Maryland, USA.
15 5. Department of Medicine, University of Maryland School of Medicine, Baltimore, Maryland, USA.
16 6. Nutrition and Clinical Services Division, International Centre for Diarrhoeal Disease Research,
17 Bangladesh(icddr,b), Mohakhali, Dhaka, Bangladesh.

18

19 **Corresponding author**

20 *Nasif Hossain

21 Postal address: 7-3-1 Hongo, Bunkyo-ku, Tokyo 113-0033, Japan

22 Email: nasif.stat.iu@gmail.com

23

24 **Short Title:** Temperature and precipitation association with child diarrhoea

25 **ABSTRACT**

26 **Background:** Diarrhoeal diseases cause a heavy burden in developing countries. Although studies
27 have described the seasonality of diarrhoeal diseases, the association of weather variables with
28 diarrhoeal diseases has not been well characterized in resource-limited settings where the burden
29 remains high. We examined short-term associations between weather and hospital visits due to
30 diarrhoea among children in seven low- and middle-income countries.

31 **Methodology:** Hospital visits due to diarrhoeal diseases in under 5 years old were collected from seven
32 sites in The Gambia, Mali, Mozambique, Kenya, India, Bangladesh, and Pakistan via the Global Enteric
33 Multicenter Study, from December 2007 to March 2011. Daily weather data during the same period were
34 downloaded from the –ERA5-Land. We fitted time-series regression models to examine the
35 relationships of daily diarrhoea cases with daily ambient temperature and precipitation. To account for
36 between-site variability, we used a multivariate random-effects meta-regression model.

37 **Principal findings:** The relative risk (RR) of diarrhoea with temperature exposure ranged from 0.24 to
38 8.07, with Mozambique and Bangladesh showing positive associations, while Mali and Pakistan showing
39 negative associations. The RR for precipitation ranged from 0.77 to 1.55, with Mali and India showing
40 positive associations, while the only negative association was observed in Pakistan. Meta-analysis
41 showed substantial heterogeneity in the association's temperature–diarrhoea and precipitation–
42 diarrhoea across sites, with I^2 of 84.2% and 67.5%, respectively.

43 **Conclusions:** Child diarrhea and weather factors have diverse and complex associations across South
44 Asia and Sub-Saharan Africa, influenced by pathogens, treatment, and nutrition. Diarrhoeal surveillance
45 system settings should be conceptualized based on the observed pattern of climate change in these
46 locations.

47 **Keywords:** temperature, precipitation, diarrhoea, children's environmental health, Asia, Africa

48 **Author Summary**

49 Diarrhoeal diseases remain a significant public health concern, particularly in low- and middle-
50 income nations, and understanding the environmental factors that influence their occurrence is
51 crucial for effective prevention and management strategies. Here, we study the weather factors,
52 such as temperature and precipitation, that could influence the prevalence of diarrhoeal diseases
53 in children. We found that higher temperatures were associated with an increased risk of
54 diarrhoea in some regions. Increased precipitation was associated with a higher incidence of
55 diarrhoea in some sites. In certain sites, diarrhoeal cases decreased with rising temperatures and
56 precipitation. We believe that these findings may offer insights into the climate and geographic
57 patterns of childhood diarrhoea. Such insights are crucial for developing targeted and efficient
58 public health interventions to reduce the burden of diarrhoeal diseases. Furthermore, weather-
59 related variables can play a significant role in driving child diarrhoea, making it imperative to
60 identify the conditions associated with these patterns to enhance our understanding of the
61 complex interplay between environmental factors and the prevalence of this disease.

62

63 **Introduction**

64 Diarrhoeal disease is a major cause of death in children under 5 years old, claiming the lives of
65 approximately 525,000 children every year [1]. Although the number of episodes of childhood
66 diarrhoea is declining globally, the prevalence of diarrhoeal disease remains high in many
67 resource-poor settings where infants and children are at risk of death and other infectious
68 diseases such as malaria and pneumonia [1,2]. In South Asian regions, the diarrhoea-related
69 morbidity remains alarmingly high, with more than 2000 children dying daily from diarrhoeal
70 diseases, far more than the number dying from HIV/AIDS, malaria, and measles combined [3]. In
71 Sub-Saharan Africa, diarrhoea remains a leading cause of death in children under age 5 years,
72 accounting for approximately 750,000 of the total 4.3 million deaths among African children before
73 their fourth birthday [4].

74 A complex set of weather factors is involved in driving the prevalence of diarrhoeal diseases. With
75 climate change, there is concern that the incidence and severity of diarrhoea may increase owing
76 to altered patterns of temperature and rainfall, as well as extreme weather events [5,6].
77 Temperature and rainfall variation generally impact diarrhoea prevalence through their effects on
78 the survival and growth of various bacteria, protozoa, and viruses that cause infections of which
79 diarrhoea is a symptom [7]. Several time-series studies have investigated the relationship
80 between specific climatological variables and all-cause diarrhoea in particular regions, sites, and

81 countries, including the relationship with temperature in Peru [8], Vietnam [9], China [10], Australia
82 [11] and Fiji [12] and that with precipitation in Mozambique [13], Ecuador [14], the United States
83 [15], and Rwanda [16]. However, most studies have focused on either temperature or rainfall, and
84 only a few investigations have considered both the effects of temperature and precipitation on
85 diarrhoea cases [17,18]. Additionally, these studies have been limited to analysing weekly or
86 monthly diarrhoea counts, and none have precisely quantified the association between
87 temperature and precipitation with daily diarrhoea counts in multiple settings and diverse contexts.
88 The objective of this study was to investigate the short-term relationship of childhood diarrhoea
89 with temperature and precipitation in seven low- and middle-income countries by age group. We
90 analysed the data from the Global Enteric Multicenter Study (GEMS). The GEMS is the largest,
91 most comprehensive study of childhood diarrhoeal diseases ever conducted in developing
92 country settings [19].

93 **Methods**

94 **Data collection**

95 Hospital visits due to diarrhoeal diseases among children under 5 years of age were collected
96 from the GEMS between December 1, 2007 and March 3, 2011. We included patients aged 0–59
97 months who met the case definition for diarrhoea (≥ 3 abnormally loose stools within 24 hours)
98 and were referred to as having all-cause diarrhoea (ACD). Using dates on patients' individual
99 records, we generated a site-by-site time-series dataset. In the absence of an individual record
100 on a given day, we assumed no patients on that day [20]. This study included seven study sites
101 across seven countries: Basse (The Gambia), Bamako (Mali), Nyanza Province (Kenya), Manhica
102 (Mozambique), Kolkata (India), Tangail (Bangladesh), and Karachi (Pakistan). These seven sites
103 provide good coverage for child populations in Sub-Saharan Africa and South Asia, where
104 approximately 90% of diarrhoea mortality had been documented [21].

105 Hourly weather data over the study period were from the European Centre for Medium-Range
106 Weather Forecast Reanalysis Version 5 - Land (ERA5-Land) and downloaded from the
107 Copernicus Climate Data Store (<https://cds.climate.copernicus.eu/#!/home>). The dataset from
108 ERA5-Land provides high spatial and temporal resolution, allowing for 9 km grid at hourly time
109 steps; vertical coverage is from 2 metres above the surface level. These datasets include hourly
110 2-metre temperature (degree Kelvin), hourly dew point temperature (degree Kelvin), and hourly
111 precipitation (metres). The hourly time-series variables were converted into local time zones (S1
112 Table) from Coordinated Universal Time (UTC) $\pm 00:00$. We calculated the daily averages for

113 temperature and dew point temperature (converted into °C) and aggregated daily total
114 precipitation in millimetres.

115 The weather data were matched with the daily patient count for ACD at each site, based on
116 location (nearest ERA5 grid square centre of each study site) and date. Our initial inspection of
117 the data suggested highly skewed precipitation data (S2 Fig, S1 Table). Thus, we calculated the
118 21-day rolling sum of daily total precipitation for risk assessment [22–24]. Relative humidity was
119 calculated as percentage using temperature and dew point temperature [20].

120

121 **Statistical analysis**

122 To assess the associations of temperature and precipitation with daily diarrhoea visits in children,
123 we fitted a time-series regression model with quasi-Poisson distribution and distributed lag
124 nonlinear model for each country:

$$Y \sim \text{Poisson}(u_t)$$

125

$$\text{Log}[E(Y_t)] = \beta_0 + CB_t + ns(rs_preci_t) + ns(time_t) + DOW_t + Holiday_t$$

126 Where Y_t is the number of diarrhoea cases on day t for the diarrhoea outcome; β_0 is the intercept;
127 CB is the cross-basis function of temperature (smoothed using a natural cubic spline [ns] with 3
128 degrees of freedom [df]) and its lags (21-day lags with 3 equally spaced knots in the log scale).
129 $ns(rs_preci)$ is a natural cubic spline (ns) of the 21-day rolling sum of precipitation (rs_preci) with
130 3 df included as another main exposure; $ns(time)$ is a natural cubic spline of day with 7 df per year
131 to control for seasonality and long-term trends. DOW_t is an indicator variable for the day of the
132 week on day t , and $Holiday_t$ is an indicator variable for country-specific national holidays on day
133 t . Using the same approach, we conducted additional analyses by stratifying into age groups of
134 0–11 months, 12–23 months, and 24–59 months. The overall cumulative relative risk (RR) for
135 both temperature and precipitation was estimated as the ratio of the risk at the 95th percentile
136 compared to the risk at the 1st percentile of each variable.

137 We applied a multivariate random-effects meta-analysis to assess heterogeneity and
138 subsequently, a meta-regression to identify location-specific meta-predictors that could account
139 for the observed heterogeneity [26]. We included site-specific average temperature, total
140 precipitation (annual average), gross domestic product per capita, population density, poverty
141 level, use of treated water, primary source of drinking water, handwashing practice, nutritional
142 status (stunting), viruses, bacteria, protozoa, moderate to severe signs of dehydration, and use
143 of oral rehydration solution (ORS) into the model as meta-predictors (S3 Table). We assessed

144 heterogeneity using the I^2 statistic, Cochran Q test, and likelihood ratio tests for the meta-
 145 predictors.

146 Sensitivity analysis

147 Several sensitivity analyses were performed to test the robustness of our results. We fitted our
 148 models to control for relative humidity and dew point temperature. We changed the lag period for
 149 temperature (14 and 28 days), the duration of rolling sum for precipitation (14 and 28 days), the
 150 df for temperature (4 to 5), and the df for the 21-day rolling sum for precipitation (4 to 5).

151 All statistical analyses were conducted with R software version 4.2.0 (The R Foundation for
 152 Statistical Computing, Vienna, Austria). The *dlnm*, *mixmeta* and *ncdf4* packages were used for
 153 nonlinear model with distributed lags, meta regression and ERA5 data extraction [26,27].

154

155 Results

156 Description of diarrhoea and weather factors

157 Table 1 shows summary statistics for the outcomes by age group and exposure variables in each
 158 country. The analysis included 66,056 ACD cases in total, with the most (n=21,751, 33%) cases
 159 in Pakistan and the fewest (n=2384, 4%) in Kenya. Diarrhoea was more common among 0–11
 160 months (n=28,392, 43%) than in 12–23 months (n=22,487, 34%) and 24–59 months (n=15,177,
 161 23%). Daily temperatures ranged from 15.2°C in Bangladesh to 37.7°C in Mali over the study
 162 period. The temperature variability in the locations from South Asia was comparable to that in
 163 Sub-Saharan Africa. Furthermore, the temperature distribution was notably narrow in Kenya and
 164 the widest in Pakistan (Table S1). Childhood diarrhoea showed clear seasonality in most
 165 countries (S1 Fig); however, these patterns varied across different geographic locations (S1 Fig).

166

167 **Table 1. Summary Statistics of Daily Study Variables in Seven Sites, 2007–2011.**

Study Site	All-cause diarrhoea, n (%)				Average Temperature °C (range)	Total Precipitation mm (range)
	Age 0–11 months	Age 12–23 months	Age 24–59 months	Total		
The Gambia	3047 (40%)	3415 (44%)	1226 (16%)	7688	28.8 (21.1, 37.4)	5.48 (0.0, 305.7)
Mali	4315 (47%)	3132 (34%)	1791 (19%)	9238	27.5 (17.4, 37.7)	6.90 (0.0, 135.7)
Mozambique	5488 (42%)	4914 (38%)	2583 (20%)	12985	23.5 (16.0, 32.5)	4.89 (0.0, 145.7)
Kenya	1148 (48%)	706 (30%)	530 (22%)	2384	22.0 (18.8, 25.3)	13.4 (0.0, 118.5)
India	1967 (41%)	1716 (36%)	1085 (23%)	4768	26.4 (15.9, 33.3)	11.4 (0.0, 209.8)

Bangladesh	3410 (47%)	2505 (35%)	1327 (18%)	7242	25.5 (15.2, 31.9)	15.6 (0.0, 326.2)
Pakistan	9017 (41%)	6099 (28%)	6635 (31%)	21751	26.2 (15.9, 34.1)	1.5 (0.0, 132.5)

168

169 **Association between temperature and diarrhoea**

170 Fig 1 and Table 2 show the cumulative effect of temperature on ACD. The association between
171 temperature and ACD tended to be linear in most countries, although the ACD risk in Mali and
172 Bangladesh levelled off when temperatures exceeded 26°C. The RR of diarrhoea increased in
173 Mozambique (4.96, 95% confidence interval [CI] 2.81–8.76) and Bangladesh (8.07, 95% CI 3.70–
174 17.60). However, the RR decreased in Mali (0.25, 95% CI 0.11–0.55) and Pakistan (0.24, 95%
175 CI 0.12–0.51). We plotted the distributed lag for a maximum of 21 days and age-specific ACD
176 each site (supplemental). At the 95th percentile temperature, the largest effect estimates were
177 observed on the current day (lag 0) in all seven countries, and a positive effect was observed up
178 to 21 days in Mozambique, Kenya, and Bangladesh (S3 Fig). A significant positive association of
179 ACD and temperature (at the 95th percentile) was found at lag 0–1 in The Gambia, at lag 4–18 in
180 Mozambique, at lag 10–16 in Kenya, and at lag 4–9 in Bangladesh. A significant negative
181 association of ACD and temperature (at the 95th percentile) was found at lag 3, lag 10–15 in Mali,
182 and at lags 2–3 and 15–19 in Pakistan. In Bangladesh, with temperatures above the 95th
183 percentile, the cumulative RRs were higher among infants (aged 0–11 months) than in toddlers
184 (aged 12–23 months) and children (aged 24–59 months). Conversely, in Mozambique, RRs were
185 higher in toddlers compared with those in infants and children, although the CIs overlapped
186 among these age groups in both countries (S4 Fig and S2 Table).

187 **Association between precipitation and diarrhoea**

188 The association between precipitation and ACD infection exhibited a monotonic increasing pattern
189 in Gambia, Mali, Kenya, and India; like temperature Mali and Bangladesh also levelled off at
190 higher precipitations. Pakistan also levelled off when rolling sum precipitation exceeded 30 mm
191 but in the opposite direction. The RR significantly increased in Mali (1.51, 95% CI 1.03–2.20) and
192 India (1.55, 95% CI 1.08–2.22). The RR declined significantly (0.77, 95% CI 0.67–0.89) in
193 Pakistan. In Mali and India, both 12-23 and 24-59 in both countries tended to exhibit higher risk
194 than the youngest 0-11 category. However, there were overlapping CIs among these age groups
195 in both countries (S5 Fig and S2 Table).

196 **Table 2. Relative Risk of Temperature and Precipitation in All-Cause Diarrhoea in Seven**
 197 **Countries.**

Country	Temperature			Precipitation		
	1st pctl	95th pctl	Relative Risk (95% CI)	1st pctl	95th pctl	Relative Risk (95% CI)
The Gambia	23	34	1.67 (0.89, 3.14)	0	535	1.36 (0.93, 1.99)
Mali	20	33	0.25 (0.11, 0.55)	0	542	1.51 (1.03, 2.20)
Mozambique	17	29	4.96 (2.81, 8.76)	6	306	0.89 (0.73, 1.08)
Kenya	20	24	2.05 (0.75, 5.58)	57	550	1.13 (0.71, 1.81)
India	17	32	0.83 (0.23, 2.94)	0	769	1.55 (1.08, 2.22)
Bangladesh	17	30	8.07 (3.70, 17.60)	0	1011	1.18 (0.87, 1.61)
Pakistan	17	31	0.24 (0.12, 0.51)	0	161	0.77 (0.67, 0.89)

198 We used a cross-basis function for temperature with a 21-day lag period both smoothed using a natural
 199 cubic spline with 3 degrees of freedom. Precipitation is based on the rolling sum of 21 days smooth
 200 using a natural cubic spline with 3 degrees of freedom. pctl, percentile; CI, confidence interval.

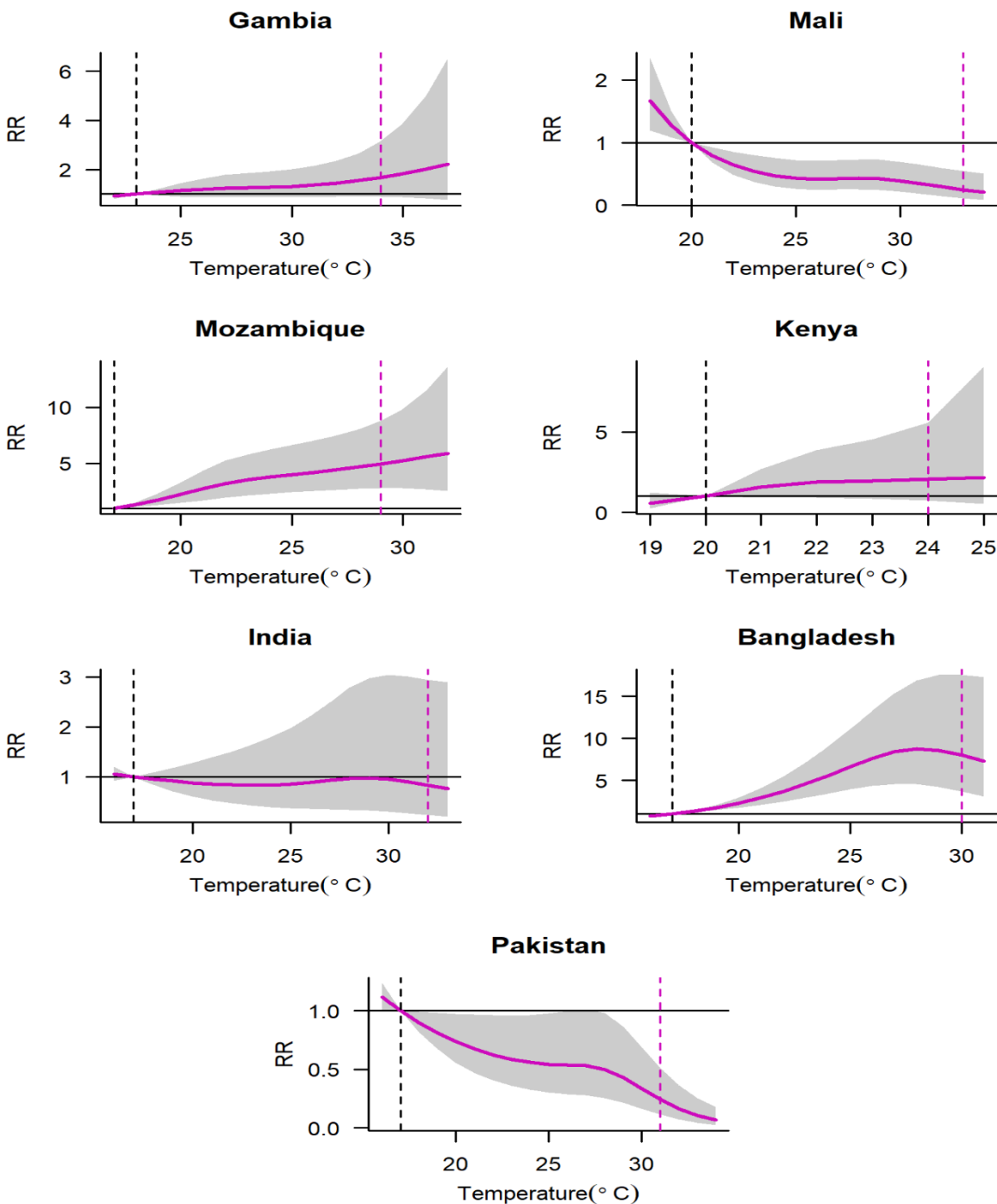
201 The simple meta-analysis showed substantial heterogeneity in the associations of temperature–
 202 diarrhoea and precipitation–diarrhoea across sites, with an I^2 of 84.2% and 67.5%, respectively.
 203 Results of meta-regression showed that pathogens (bacteria) and dehydration treated with ORS
 204 could modify the temperature–diarrhoea association across different study sites. Only nutritional
 205 status (stunting) was found to be important predictor that modified the precipitation–diarrhoea
 206 association (Table 3).

207 **Table 3. Results of meta-regression model for temperature–diarrhoea and precipitation–**
 208 **diarrhoea**

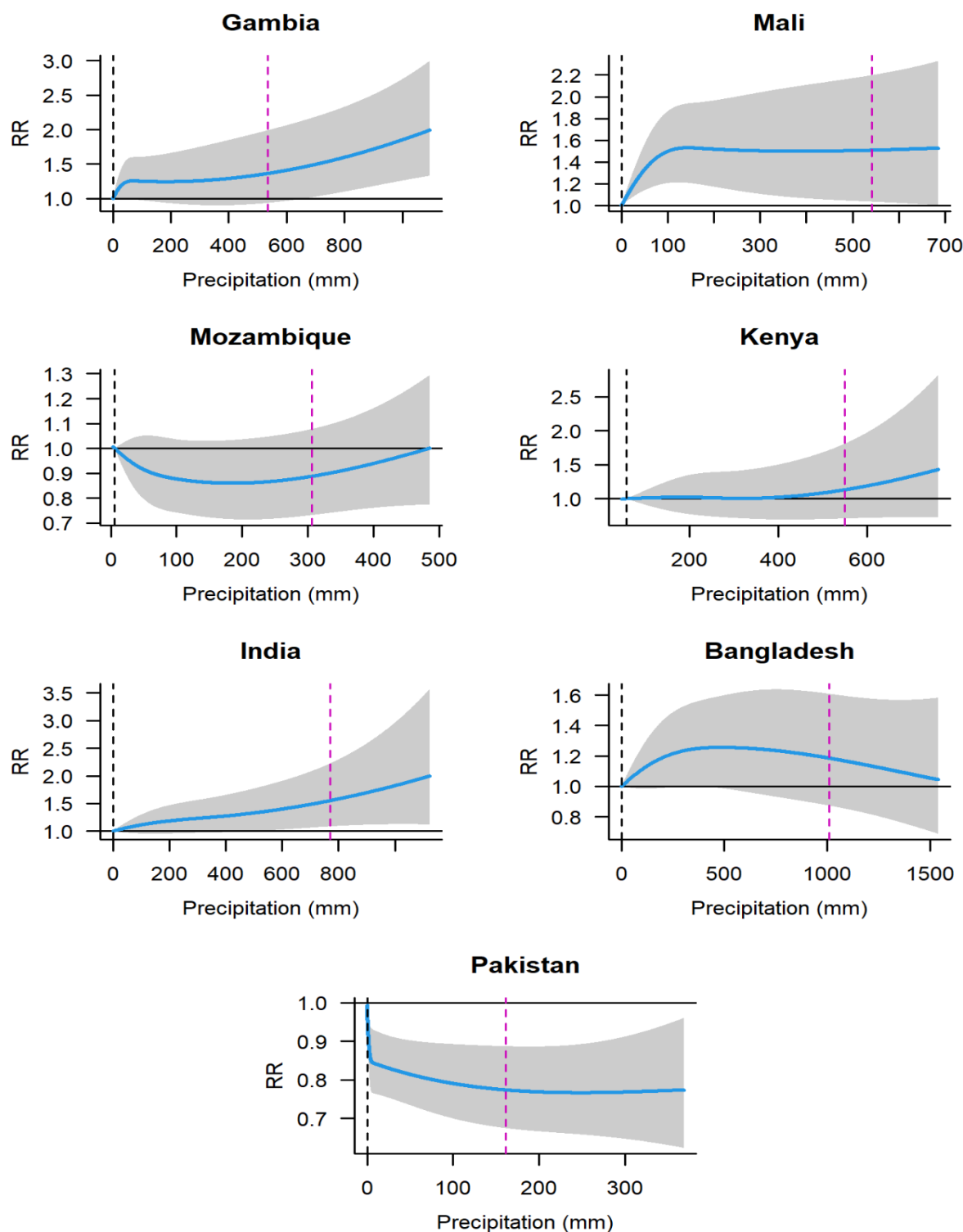
	Temperature			Precipitation		
	R^2 (%)	Q test (p-value)	LR test (p-value)	R^2 (%)	Q test (p-value)	LR test (p-value)
Intercept only	84.2	<0.001		67.5	<0.001	
Temperature	82.9	<0.001	0.511	60.0	<0.001	0.498
Precipitation	82.7	<0.001	0.299	69.2	<0.001	0.680
Gross domestic product	81.3	<0.001	0.131	58.8	0.002	0.597
Population density	86.5	<0.001	0.821	71.1	<0.001	0.939
Poverty level	86.4	<0.001	0.894	72.1	<0.001	0.945
Treated water	84.9	<0.001	0.829	64.1	<0.001	0.308
Drinking water (tube well)	81.0	<0.001	0.073	68.0	<0.001	0.389
Hand washing	85.6	<0.001	0.600	71.9	<0.001	0.691
Stunting	85.4	<0.001	0.296	26.1	0.016	0.015
Viruses	86.6	<0.001	0.904	59.7	<0.001	0.095
Bacteria	82.3	<0.001	0.008	63.9	<0.001	0.373
Protozoa	85.5	<0.001	0.339	72.5	<0.001	0.920
Moderate-severe dehydration	86.1	<0.001	0.772	55.9	0.003	0.391
Oral rehydration solution	84.1	<0.001	0.024	56.6	0.002	0.076

209 Degrees of freedom (df), heterogeneity (R^2), information criteria, and likelihood ratio (LR) tests for
 210 meta-predictors.

211



212 **Fig 1. Association between daily mean temperature over 21 days and all-cause diarrhoea.**
213 Purple solid lines represent point estimates of relative risk (RR); grey shaded polygons are 95%
214 confidence intervals. Dashed black vertical lines are reference temperature at the 1st percentile
215 and dashed purple vertical lines are temperature at 95th percentile.



216

217 **Fig 2. Association between precipitation over 21 days and all-cause diarrhoea.**

218 Blue solid lines represent point estimates of relative risk (RR); grey shaded polygons are 95%
219 confidence intervals. Dashed black vertical lines are reference precipitation at the 1st percentile
220 and dashed purple vertical lines are precipitation at the 95th percentile.

221 **Sensitivity analysis**

222 In sensitivity analyses, the estimates for the association of temperature and precipitation with
223 diarrhoea were generally similar when adjusting for possible time-varying covariates (relative
224 humidity and dew point). The RRs were not substantially changed by changing the lag days,
225 number of rolling sum days, or changing the exposure df; only some estimated CIs were reduced
226 or increased (S6 Fig and S7 Fig).

227 **Discussion**

228 We found varying patterns of diarrhoea morbidity in relation to temperature and precipitation
229 across sites in this study. Specifically, we observed independent increase of diarrhoea morbidity
230 associated with high temperatures in Mozambique and Bangladesh. In contrast, we found a
231 significant inverse association between temperature and diarrhoea incidence in Mali and
232 Pakistan. Regarding precipitation, the results demonstrated that high precipitation was
233 independently associated with increased diarrhoea in Mali and India whereas a negative
234 association was found in Pakistan.

235 The relationship between temperature and ACD varied among countries. In Mozambique and
236 Bangladesh, the evidence indicated that high temperatures contributed to ACD morbidity. This
237 was consistent with the findings of previous single-site studies [8,10,11,17,28–30]. A study in
238 Mozambique found that each 1°C increase on the hottest day of the concurrent week was
239 associated with a 3.64% increase in the incidence of diarrhoea [13]. Another study in Dhaka,
240 Bangladesh found that an average 1°C increase in temperature over the previous 4 weeks was
241 associated with a 6.5% increased incidence of non-cholera and non-rotavirus diarrhoea [18].
242 However, it is important to note that the direction of this association varies by region. In Mali and
243 Pakistan, we found that diarrhoea morbidity decreased with increasing temperature. A few
244 epidemiological studies have suggested that the risk of infectious diarrhoea decreases with a rise
245 in temperature; a time-series study conducted by Thiam et al. in 2017 showed that nighttime
246 temperatures above 26°C were negatively associated with under-five diarrhoea incidence [31],
247 Wang et al. reported an association between meteorological factors and diarrhoea incidence in
248 southern China for 11 years of time-series studies and found a high overall cumulative RR for low
249 mean temperature [32]. Another study found in Botswana a negative association between
250 temperature and diarrhoea during the wet season [33]. The results of multivariate meta-regression
251 showed that some modifiers could explain heterogeneity among seven sites in seven countries.
252 We found that the prevalence of bacterial pathogens modified the association between high
253 temperature and child diarrhoea. A systematic review and meta-analysis study showed significant

254 differences of association with temperature among bacterial pathogens [34]. The majority of
255 studies reported positive associations between temperature and bacterial infections [35] and a
256 study showed a negative association [36]. We also found that ORS used at home for treating
257 diarrhoea had a significantly different effect on the association between temperature and
258 diarrhoea. Studies have shown contrasting patterns of ORS adoption in Kenya [37] and Mexico.
259 These modifiers reflected the differences in the local epidemiology and health behaviors of the
260 seven sites in seven countries. These results indicate that temperature may have varying impacts
261 on diarrhoeal diseases in different settings.

262 There was a monotonic increase in precipitation-related diarrhoea, but this varied in direction
263 across locations. A steady rise in ACD cases was observed in The Gambia, Mali, Kenya, and
264 India, with Mali and India having significant results of 542 mm and 769 mm of rainfall over a 3-
265 week moving sum. Our findings are consistent with those of previous studies conducted in
266 different regions [38–40]. For example, Carlton et al. performed a study in Ecuador and found that
267 heavy rainfall events were associated with increased diarrhoea incidence following dry periods
268 and a decrease following wet periods [41]. A study in India showed that heavy precipitation can
269 cause water contamination and disrupt sanitation systems, with a breakdown of infrastructure
270 [28]. Additionally, heavy precipitation is associated with an increased risk of diarrhoea through its
271 impact on river levels [42], causing river levels to rise, which can lead to flooding. Flooding can
272 lead to contamination of water sources with sewage and other pollutants, making it difficult access
273 clean water and increasing the risk of waterborne illnesses such as diarrhoea. Heavy precipitation
274 can also cause a flushing action that can send pathogens, including those that cause diarrhoea,
275 into surface and groundwater sources. This can happen when heavy precipitation causes surface
276 runoff, which can carry bacterial and protozoan pathogens from contaminated areas [43] such as
277 from overflowing septic tanks, latrines, or sewage treatment plants, into nearby water sources
278 [44]. In contrast, our analysis revealed an inverse relationship between precipitation and diarrhoea
279 in Pakistan, which receives the lowest amount of rain among the countries in our study (see Table
280 1). This implies that low precipitation levels increase the risk of diarrhoea in children; previous
281 studies support these findings [16,29]. A lack of water owing to drought has been associated with
282 outbreaks of several waterborne diseases. For instance, in places where water is scarce, there
283 has been an increased occurrence of infections like cholera, *Escherichia coli* infection, and
284 leptospirosis [45], which could be attributed to poor hygiene practices and the consumption of
285 contaminated water with higher pathogen concentrations [6]. However, the association between
286 precipitation and diarrhoea differed across different sites in our study. We investigated this
287 heterogeneity and found that nutritional status (stunting) could modify this association. It is less

288 clear how to interpret these variations. A study investigated the association between rainfall
289 variations and child diarrhoea in 15 Sub-Saharan African countries and shows that height for age
290 z score is no longer significant by climate zones [7]. Nevertheless, a study showed watery
291 diarrhoea was 63% less likely to cause death in children with acute malnutrition than those with
292 better nutritional status [46].

293 Our age-stratified analysis revealed that children under two years of age were more susceptible
294 to diarrheal diseases in relation to climate change. This could be explained by the fact that very
295 young children may stay indoors with their mothers, who are often engaged in domestic activities
296 that expose them to contaminated water and food sources [47]. The immune systems of young
297 children may not be fully developed and may not be able to cope with the increased pathogen
298 load that results from climate change [48]. Moreover, when they start to walk, they may encounter
299 more environmental exposure like temperature and precipitations that could increase their risk of
300 infection [49].

301 The relationship among temperature, precipitation, and diarrhoea is complex and can vary
302 depending on the specific pathogens involved. Different pathogens have different transmission
303 mechanisms and survival rates under different environmental conditions. For example, some
304 diarrhoeal pathogens may survive longer in warmer temperatures whereas others may thrive in
305 wetter conditions. Therefore, conducting pathogen-specific analysis in future studies is crucial to
306 better understand the relationship between environmental factors and diarrhoeal diseases.

307 **Strengths and limitations of this study**

308 Several studies have investigated the association between diarrhoea and environmental factors,
309 such as temperature and precipitation, in one country or multiple sites in one country. However,
310 there is little research on this association across multiple countries using consistent methods. We
311 addressed this knowledge gap by analysing data from multiple site and geographically varied
312 countries using well-tested methods to investigate the association between diarrhoea and
313 environmental factors, such as temperature and precipitation. The daily dataset, which enables
314 the application of advanced DLNM to assess delayed effects, it would be beneficial to elaborate
315 on this in the discussion section in the context of temperature. This is especially since the results
316 section has distinctly outlined the lag patterns across various sites. The seven study sites
317 represent a range of child health indicators in developing countries as well as urban, peri-urban,
318 and rural settings. The study performed an analysis stratified by age, which is a rare approach
319 taken in similar topics. To our best knowledge, we believe that this one is the largest study
320 addressing the independent impact of temperature and precipitation on ACD, with consideration

321 of non-linear and delayed dependencies. We examined the associations of diarrhoea with
322 temperature and precipitation in terms of total as well as age-specific diarrhoea morbidity.

323 Some study limitations must be acknowledged. First, we only considered one site in each country;
324 therefore, our findings may not be nationally representative. Second, the study period was
325 relatively short, and CIs of the estimates were wide for some sites. Lastly, pathogens causing
326 diarrhoea infections might behave differently under different climate conditions, and our dataset
327 failed to build up the DLNM model due to the probability of daily sampling is not equal. Future
328 research should focus on the mechanism of temperature and precipitation on diarrhoeal infectious
329 diseases, such as in pathogen-specific analysis and projection of future risks of diarrhoea
330 considering socioeconomic pathways.

331 **Conclusion**

332 Our summary findings suggested an essential role of both ambient temperature and precipitation
333 in increasing the likelihood of diarrhoeal infections in South Asian and Sub-Saharan regions.
334 Specifically, Mozambique, and Bangladesh were found to be more susceptible to diarrhoeal
335 diseases with high temperatures whereas Mali and Pakistan exhibited a decrease in infections.
336 Similarly, high precipitation was linked to an increase in diarrhoeal infections in Mali and India but
337 a decrease in infections in Pakistan. It is possible that this variation can be explained by factors
338 such as disease-causing pathogens, the use of ORS for treating dehydration, and nutritional
339 status.

340 **Funding**

341 This work was supported by the Japan Science and Technology Agency (JST) as part of SICORP,
342 Grant Number JPMJSC20E4, and the Japanese Government (Monbukagakusho) Scholarship
343 from the Ministry of Education, Science, Sport, and Culture of Japan.

344 **Acknowledgements**

345 We gratefully acknowledge the support of the University of Maryland, which is the PI Institute of
346 GEMS study. We thank Toshihiko Sunahara, PhD, and Michiko Toizumi, PhD for editing a draft
347 of this manuscript.

348 **Author Contributions**

349 Conceptualization: Nasif Hossain, Masahiro Hashizume

350 Data curation: Nasif Hossain

- 351 Formal analysis: Nasif Hossain
- 352 Investigation: Nasif Hossain
- 353 Methodology: Nasif Hossain, Lina Madaniyazi, Chris Fook Sheng Ng, Masahiro Hashizume
- 354 Supervision: Lina Madaniyazi, Chris Fook Sheng Ng, Dilruba Nasrin, Masahiro Hashizume
- 355 Project administration: Masahiro Hashizume
- 356 Resources: Xerxes Tesoro Seposo, Paul L.C. Chua, Rui Pan, Abu Syed Golam Faruque
- 357 Software: Masahiro Hashizume
- 358 Validation: Nasif Hossain
- 359 Visualization: Nasif Hossain
- 360 Writing – original draft: Nasif Hossain
- 361 Writing – review & editing: Nasif Hossain, Lina Madaniyazi, Chris Fook Sheng Ng, Dilruba Nasrin,
- 362 Xerxes Tesoro Seposo, Paul L.C. Chua, Rui Pan, Abu Syed Golam Faruque, Masahiro
- 363 Hashizume
- 364 Funding acquisition: Nasif Hossain, Masahiro Hashizume

365 References

- 366 1. World Health Organization. Diarrhoeal disease. World health Organization. 2017. Available:
367 <https://www.who.int/news-room/fact-sheets/detail/diarrhoeal-disease>
- 368 2. unicef. Diarrhoea remains a leading killer of young children, despite the availability of a simple treatment
369 solution. In: United Nations Children’s Fund [Internet]. 2021 [cited 3 Jun 2021]. Available:
370 <https://data.unicef.org/topic/child-health/diarrhoeal-disease/#more--1517>
- 371 3. Liu L, Johnson HL, Cousens S, Perin J, Scott S, Lawn JE, et al. Global, regional, and national causes of child
372 mortality: An updated systematic analysis for 2010 with time trends since 2000. *The Lancet*. 2012;379: 2151–
373 2161. doi:10.1016/S0140-6736(12)60560-1
- 374 4. Jamison DT, Feachem RG, Makgoba MW, Bos ER, Baingana FK, Hofman KJ, et al. Disease and Mortality in
375 Sub-Saharan Africa. Population Association of America meeting. The International Bank for Reconstruction
376 and Development / The World Bank; 2006. Available: <https://www.ncbi.nlm.nih.gov/books/NBK2279/>
- 377 5. Levy K, Smith SM, Carlton EJ. Climate Change Impacts on Waterborne Diseases: Moving Toward Designing
378 Interventions. *Current environmental health reports*. 2018;5: 272. doi:10.1007/S40572-018-0199-7
- 379 6. Levy K, Woster AP, Goldstein RS, Carlton EJ. Untangling the Impacts of Climate Change on Waterborne
380 Diseases: a Systematic Review of Relationships between Diarrheal Diseases and Temperature, Rainfall,
381 Flooding, and Drought. *Environmental science & technology*. 2016;50: 4905–4922.
382 doi:10.1021/ACS.EST.5B06186
- 383 7. Bandyopadhyay S, Kanji S, Wang L. The impact of rainfall and temperature variation on diarrheal prevalence
384 in Sub-Saharan Africa. *Applied Geography*. 2012;33: 63–72. doi:10.1016/J.APGEOG.2011.07.017
- 385 8. Checkley W, Epstein LD, Gilman RH, Figueroa D, Cama RI, Patz JA, et al. Effects of El Nino and ambient
386 temperature on hospital admissions for diarrhoeal diseases in Peruvian children. *Lancet*. 2000;355: 442–450.
387 doi:10.1016/S0140-6736(00)82010-3
- 388 9. Phung D, Huang C, Rutherford S, Chu C, Wang X, Nguyen M, et al. Temporal and spatial patterns of
389 diarrhoea in the Mekong Delta area, Vietnam. *Epidemiology and infection*. 2015;143: 3488–3497.
390 doi:10.1017/S0950268815000709
- 391 10. Zhou X, Zhou Y, Chen R, Ma W, Deng H, Kan H. High Temperature as a Risk Factor for Infectious Diarrhea
392 in Shanghai, China. *Journal of Epidemiology*. 2013;23: 418. doi:10.2188/JEA.JE20130012
- 393 11. Xu Z, Huang C, Turner LR, Su H, Qiao Z, Tong S. Is Diurnal Temperature Range a Risk Factor for Childhood
394 Diarrhea? *PLOS ONE*. 2013;8: e64713. doi:10.1371/JOURNAL.PONE.0064713
- 395 12. Singh RB, Hales S, Wet N de, Raj R, Hearnden M, Weinstein P. The influence of climate variation and
396 change on diarrheal disease in the Pacific Islands. *Environmental Health Perspectives*. 2001;109: 155.
397 doi:10.1289/EHP.01109155
- 398 13. Horn LM, Hajat A, Sheppard L, Quinn C, Colborn J, Zermoglio MF, et al. Association between Precipitation
399 and Diarrheal Disease in Mozambique. *International Journal of Environmental Research and Public Health*.
400 2018;15: 709. doi:10.3390/IJERPH15040709

- 401 14. Deshpande A, Chang HH, Levy K. Heavy Rainfall Events and Diarrheal Diseases: The Role of Urban–Rural
402 Geography. *The American Journal of Tropical Medicine and Hygiene*. 2020;103: 1043.
403 doi:10.4269/AJTMH.19-0768
- 404 15. Drayna P, McLellan SL, Simpson P, Li SH, Gorelick MH. Association between Rainfall and Pediatric
405 Emergency Department Visits for Acute Gastrointestinal Illness. *Environmental Health Perspectives*.
406 2010;118: 1439. doi:10.1289/EHP.0901671
- 407 16. Mukabutera A, Thomson D, Murray M, Basinga P, Nyirazinyoye L, Atwood S, et al. Rainfall variation and
408 child health: Effect of rainfall on diarrhea among under 5 children in Rwanda, 2010. *BMC Public Health*.
409 2016;16: 1–9. doi:10.1186/S12889-016-3435-9/TABLES/5
- 410 17. Alemayehu B, Ayele BT, Melak F, Ambelu A. Exploring the association between childhood diarrhea and
411 meteorological factors in Southwestern Ethiopia. *Science of The Total Environment*. 2020;741: 140189.
412 doi:10.1016/J.SCITOTENV.2020.140189
- 413 18. Hashizume M, Armstrong B, Hajat S, Wagatsuma Y, Faruque ASG, Hayashi T, et al. Association between
414 climate variability and hospital visits for non-cholera diarrhoea in Bangladesh: effects and vulnerable groups.
415 *International Journal of Epidemiology*. 2007;36: 1030–1037. doi:10.1093/IJE/DYM148
- 416 19. Kotloff KL, Nataro JP, Blackwelder WC, Nasrin D, Farag TH, Panchalingam S, et al. Burden and aetiology of
417 diarrhoeal disease in infants and young children in developing countries (the Global Enteric Multicenter
418 Study, GEMS): A prospective, case-control study. *The Lancet*. 2013;382: 209–222. doi:10.1016/S0140-
419 6736(13)60844-2
- 420 20. Chao DL, Roose A, Roh M, Kotloff KL, Proctor JL. The seasonality of diarrheal pathogens: A retrospective
421 study of seven sites over three years. *PLOS Neglected Tropical Diseases*. 2019;13: e0007211.
422 doi:10.1371/JOURNAL.PNTD.0007211
- 423 21. Naghavi M, Abajobir AA, Abbafati C, Abbas KM, Abd-Allah F, Abera SF, et al. Global, regional, and national
424 age-sex specific mortality for 264 causes of death, 1980-2016: A systematic analysis for the Global Burden of
425 Disease Study 2016. *The Lancet*. 2017;390: 1151–1210. doi:10.1016/S0140-6736(17)32152-9
- 426 22. Liu ZD, Li J, Zhang Y, Ding GY, Xu X, Gao L, et al. Distributed lag effects and vulnerable groups of floods on
427 bacillary dysentery in Huaihua, China. *Scientific Reports* 2016 6:1. 2016;6: 1–8. doi:10.1038/srep29456
- 428 23. Tornevi A, Axelsson G, Forsberg B. Association between precipitation upstream of a drinking water utility and
429 nurse advice calls relating to acute gastrointestinal illnesses. *PloS one*. 2013;8.
430 doi:10.1371/JOURNAL.PONE.0069918
- 431 24. Cheng J, Wu J, Xu Z, Zhu R, Wang X, Li K, et al. Associations between extreme precipitation and childhood
432 hand, foot and mouth disease in urban and rural areas in Hefei, China. *The Science of the total environment*.
433 2014;497–498: 484–490. doi:10.1016/J.SCITOTENV.2014.08.006
- 434 25. NOAA (National Oceanic and Atmospheric Administration). Dew Point and Relative Humidity Calculations.
435 2007 [cited 7 Dec 2022]. Available: <https://www.wpc.ncep.noaa.gov/html/dewrh.shtml>
- 436 26. Sera F, Gasparri A. Extended two-stage designs for environmental research. *Environmental Health: A*
437 *Global Access Science Source*. 2022;21: 1–13. doi:10.1186/S12940-022-00853-Z/FIGS/5

- 438 27. Gasparrini A. Distributed Lag Linear and Non-Linear Models in R: The Package dlnm. *Journal of Statistical*
439 *Software*. 2011;43: 1–20. doi:10.18637/JSS.V043.I08
- 440 28. Grondeau C, Samson R. A Review of Thermotherapy to Free Plant Materials from Pathogens, Especially
441 Seeds from Bacteria. *Critical Reviews in Plant Sciences*. 2011;13: 57–75. doi:10.1080/07352689409701908
- 442 29. Morral-Puigmal C, Martínez-Solanas È, Villanueva CM, Basagaña X. Weather and gastrointestinal disease in
443 Spain: A retrospective time series regression study. *Environment international*. 2018;121: 649–657.
444 doi:10.1016/J.ENVINT.2018.10.003
- 445 30. Anwar MY, Warren JL, Pitzer VE. Diarrhea Patterns and Climate: A Spatiotemporal Bayesian Hierarchical
446 Analysis of Diarrheal Disease in Afghanistan. *The American journal of tropical medicine and hygiene*.
447 2019;101: 525–533. doi:10.4269/AJTMH.18-0735
- 448 31. Thiam S, Diène AN, Sy I, Winkler MS, Schindler C, Ndione JA, et al. Association between Childhood
449 Diarrhoeal Incidence and Climatic Factors in Urban and Rural Settings in the Health District of Mbour,
450 Senegal. *International Journal of Environmental Research and Public Health*. 2017;14.
451 doi:10.3390/IJERPH14091049
- 452 32. Wang H, Di B, Zhang TJ, Lu Y, Chen C, Wang D, et al. Association of meteorological factors with infectious
453 diarrhea incidence in Guangzhou, southern China: A time-series study (2006–2017). *Science of The Total*
454 *Environment*. 2019;672: 7–15. doi:10.1016/J.SCITOTENV.2019.03.330
- 455 33. Alexander KA, Carzolio M, Goodin D, Vance E. Climate Change is Likely to Worsen the Public Health Threat
456 of Diarrheal Disease in Botswana. *International Journal of Environmental Research and Public Health*.
457 2013;10: 1202. doi:10.3390/IJERPH10041202
- 458 34. Chua PLC, Ng CFS, Tobias A, Seposo XT, Hashizume M. Associations between ambient temperature and
459 enteric infections by pathogen: a systematic review and meta-analysis. *The Lancet Planetary health*. 2022;6:
460 e202–e218. doi:10.1016/S2542-5196(22)00003-1
- 461 35. Carlton EJ, Woster AP, DeWitt P, Goldstein RS, Levy K. A systematic review and meta-analysis of ambient
462 temperature and diarrhoeal diseases. *International Journal of Epidemiology*. Oxford University Press; 2016.
463 pp. 117–130. doi:10.1093/ije/dyv296
- 464 36. Thindwa D, Chipeta MG, Henrion MYR, Gordon MA. Distinct climate influences on the risk of typhoid
465 compared to invasive non-typhoid Salmonella disease in Blantyre, Malawi. *Scientific Reports* 2019 9:1.
466 2019;9: 1–11. doi:10.1038/s41598-019-56688-1
- 467 37. Zwisler G, Simpson E, Moodley M. Treatment of diarrhea in young children: results from surveys on the
468 perception and use of oral rehydration solutions, antibiotics, and other therapies in India and Kenya. *Journal*
469 *of Global Health*. 2013;3. doi:10.7189/JOGH.03.010403
- 470 38. Wangdi K, Clements ACA. Spatial and temporal patterns of diarrhoea in Bhutan 2003-2013. *BMC Infectious*
471 *Diseases*. 2017;17: 1–9. doi:10.1186/S12879-017-2611-6/FIGS/6
- 472 39. Kraay ANM, Man O, Levy MC, Levy K, Ionides E, Eisenberg JNS. Understanding the Impact of Rainfall on
473 Diarrhea: Testing the Concentration-Dilution Hypothesis Using a Systematic Review and Meta-Analysis.
474 *Environmental Health Perspectives*. 2020;128: 126001-1-126001–16. doi:10.1289/EHP6181

- 475 40. Wu J, Yunus M, Streatfield PK, Emch M. Association of climate variability and childhood diarrhoeal disease in
476 rural Bangladesh, 2000–2006. *Epidemiology & Infection*. 2014;142: 1859–1868.
477 doi:10.1017/S095026881300277X
- 478 41. Carlton EJ, Eisenberg JNS, Goldstick J, Cevallos W, Trostle J, Levy K. Heavy rainfall events and diarrhea
479 incidence: the role of social and environmental factors. *American journal of epidemiology*. 2014;179: 344–
480 352. doi:10.1093/AJE/KWT279
- 481 42. Hashizume., Armstrong B, Hajat S, Wagatsuma Y, Faruque ASG, Hayashi T, et al. The effect of rainfall on
482 the incidence of cholera in Bangladesh. *Epidemiology*. 2008;19: 103–110.
483 doi:10.1097/EDE.0B013E31815C09EA
- 484 43. Jagai JS, Sarkar R, Castronovo D, Kattula D, McEntee J, Ward H, et al. Seasonality of Rotavirus in South
485 Asia: A Meta-Analysis Approach Assessing Associations with Temperature, Precipitation, and Vegetation
486 Index. *PLOS ONE*. 2012;7: e38168. doi:10.1371/JOURNAL.PONE.0038168
- 487 44. Ahmed W, Hamilton K, Toze S, Cook S, Page D. A review on microbial contaminants in stormwater runoff
488 and outfalls: Potential health risks and mitigation strategies. *The Science of the Total Environment*. 2019;692:
489 1304. doi:10.1016/J.SCITOTENV.2019.07.055
- 490 45. Stanke C, Kerac M, Prudhomme C, Medlock J, Murray V. Health effects of drought: a systematic review of
491 the evidence. *PLoS currents*. 2013;5.
492 doi:10.1371/CURRENTS.DIS.7A2CEE9E980F91AD7697B570BCC4B004
- 493 46. Tickell KD, Sharmin R, Deichsel EL, Lamberti LM, Walson JL, Faruque ASG, et al. The effect of acute
494 malnutrition on enteric pathogens, moderate-to-severe diarrhoea, and associated mortality in the Global
495 Enteric Multicenter Study cohort: a post-hoc analysis. *The Lancet Global Health*. 2020;8: e215.
496 doi:10.1016/S2214-109X(19)30498-X
- 497 47. Kumar M, Saadaoui M, Al Khodor S. Infections and Pregnancy: Effects on Maternal and Child Health.
498 *Frontiers in Cellular and Infection Microbiology*. 2022;12: 873253. doi:10.3389/FCIMB.2022.873253/BIBTEX
- 499 48. Mills F, Willetts J, Petterson S, Mitchell C, Norman G. Faecal Pathogen Flows and Their Public Health Risks
500 in Urban Environments: A Proposed Approach to Inform Sanitation Planning. *International Journal of*
501 *Environmental Research and Public Health* 2018, Vol 15, Page 181. 2018;15: 181.
502 doi:10.3390/IJERPH15020181
- 503 49. Headey D, Nguyen P, Kim S, Rawat R, Ruel M, Menon P. Is exposure to animal feces harmful to child
504 nutrition and health outcomes? A multicountry observational analysis. *American Journal of Tropical Medicine*
505 *and Hygiene*. 2017;96: 961–969. doi:10.4269/AJTMH.16-0270
- 506

507 **Supporting information**

508 **S1 Table. Summary statistics information of ERA5 land**

509 (DOCX)

510 **S2 Table. Summary of age-specific relative risk of temperature (°C) and precipitation over**
511 **21 days on all-cause diarrhoea for seven countries at 95th percentile temperature and**
512 **precipitation.**

513 (DOCX)

514 **S3 Table S3. List of site-specific meta predictors**

515 (DOCX)

516 **S1 Fig. Time-series plots of the daily number of all-cause diarrhoea cases, moderate to**
517 **severe diarrhoea cases, daily mean temperature, and precipitation between 2008 and 2011**
518 **in the study countries.**

519 (DOCX)

520 **S2 Fig. Distribution of ERA5 daily temperature and precipitation.**

521 (DOCX)

522 **S3 Fig. Lag-response relationship between temperature and ACD morbidity at 95th**
523 **percentile temperature for each site.**

524 (DOCX)

525 **S4 Fig. Association between daily mean temperature over 21 days and all-cause diarrhoea**
526 **stratified by age group.**

527 (DOCX)

528 **S5 Fig. Association between daily precipitation over 21 days and all-cause diarrhoea**
529 **stratified by age group.**

530 (DOCX)

531 **S6 Fig. Cumulative relative risks (RRs) with 95% Cis [95th vs. 1st Pctl] by country in**
532 **sensitivity analyses for the Temperature-Diarrhoea model.**

533 (DOCX)

534 **S7 Fig. Cumulative relative risks (RRs) with 95% Cis [95th vs. 1st] by country in sensitivity**
535 **analyses for the Precipitation-Diarrhoea model.**
536 (DOCX)
537