

## The Green Heart Project: Objectives, Design, and Methods

Aruni Bhatnagar<sup>1,2</sup>, Rachel Keith<sup>1,2</sup>, Ray Yeager<sup>1,2</sup>, Daniel Riggs<sup>1,2</sup>, Clara Sears<sup>1,2</sup>, Brent Bucknum<sup>3</sup>, Ted Smith<sup>1,2</sup>, Daniel Fleischer<sup>3</sup>, Chris Chandler<sup>4</sup>, Kandi L. Walker<sup>1,5</sup>, Joy L. Hart<sup>1,5</sup>, Sanjay Srivastava<sup>1,2</sup>, Jay Turner<sup>6</sup>, and Shesh Rai<sup>7</sup>

1. Christina Lee Brown Envirome Institute
2. Department of Medicine, University of Louisville, Louisville, KY
3. Hyphae Design Labs, Oakland, California
4. The Nature Conservancy
5. Department of Communications, University of Louisville, Louisville, KY
6. Department of Chemical Engineering, Washington University, St. Louis, MO
7. Department of Environmental Health, University of Cincinnati, Cincinnati, OH.

### Address for Correspondence

Aruni Bhatnagar, PhD  
Director, Christina Lee Brown Envirome Institute  
Director, American Heart Association Tobacco Regulation Center  
Chief, Division of Environmental Medicine  
Lucille Gibson Smith Professor of Medicine, Department of Medicine  
302E Muhammad Ali, Blvd  
University of Louisville, Louisville, KY 40202  
Ph: 502-852-5966

## ABSTRACT

The Green Heart Project is a community-based trial to evaluate the effects of increasing greenery on urban environment and community health. The study was initiated in 2018 in a low-to-middle-income mixed-race residential area of nearly 28,000 residents in Louisville, KY. The 4 square mile area was surveyed for land use, population characteristics, and greenness, and assigned to 8 paired clusters of demographically- and environmentally matched “target” (T) and adjacent “control” (C), clusters. Ambient levels of ultrafine particles, ozone, oxides of nitrogen, and environmental noise were measured in each cluster. Individual-level data were acquired during in-person exams of 735 participants in Wave 1 (2018-2019) and 545 participants in Wave 2 (2021) to evaluate sociodemographic and psychosocial factors. Blood, urine, nail, and hair samples were collected to evaluate standard cardiovascular risk factors, inflammation, stress, and pollutant exposure. Cardiovascular function was assessed by measuring arterial stiffness and flow-mediated dilation. After completion of Wave 2, more than 8,000 mature, mostly evergreen, trees and shrubs were planted in the T clusters in 2022. Post planting environmental and individual-level data were collected during Wave 3 (2022) from 561 participants. We plan to continue following changes in area characteristics and participant health to evaluate the long-term impact of increasing urban greenery.

## INTRODUCTION

Globally, nearly 4.4 billion people live in urban areas, and this number is expected to increase to 6.6 billion by 2050.<sup>4</sup> Although cities facilitate social interaction and provide economic opportunities, their high levels of pollution, noise, and crowding create adverse conditions that increase disease risk. Living in artificial urban environments also minimizes contact with nature, which seems conducive for psychological and physical health.<sup>5</sup> Those who live in green areas report lower levels of stress<sup>6-8</sup> and depression,<sup>9-11</sup> whereas living in areas of low greenness is associated with increased risk of insulin resistance,<sup>12</sup> diabetes,<sup>13-15</sup> stroke,<sup>16, 17</sup> as well as all cause,<sup>18 19</sup> cancer,<sup>20-22</sup> and cardiovascular mortality;<sup>23, 24 19</sup> and decrease in life expectancy.<sup>25</sup> Nevertheless, most of this evidence is observational and cross-sectional, which does not address causality or even the underlying mechanisms.

High levels of urban greenery could promote community health for many reasons.<sup>24, 26-28</sup> Exposure to greenness could improve mental health and social cohesion. It could also promote physical activity and reduce exposure to noise, light, and air pollution. However, the extent to which these processes contribute to the health effects of greenery remains unclear. Moreover, because most epidemiological studies use satellite imagery (which only measures “greenness”),<sup>29</sup> they provide little actionable data about the types, configurations, and locations of greenery that optimally benefit health. Therefore, we initiated the Green Heart Project (GHP) to directly examine changes in cardiovascular health and area characteristics in an urban neighborhood before and after a greening intervention in comparison with an adjacent area with no deliberate greening. We expect that interventional approach of the GHP would enable us to better address causal pathways linking greenness and health than the observational design of most studies to-date and provide key insights into mechanisms linking greenness and health.

A direct real-world, community-based evaluation of the link between greenness and cardiovascular health could inform the development of new approaches to prevent cardiovascular disease (CVD), which despite significant advances in treatment and management, remains the leading cause of death worldwide.<sup>30</sup> Ominously, the rates of CVD continue to increase worldwide,<sup>31</sup> in part due to increased urbanization as well as due to shifts in global temperature, increased pollution and extreme weather events due to climate change.<sup>32</sup> Therefore, the results of GHP could help in assessing the efficacy of greenness as a unique, cost-effective public health strategy to decrease the global burden of CVD and to improve climate adaptation for people living in urban environments. Evaluation of the impact of urban greenness could also help in mitigating the effects of air pollution. Globally air pollution has been linked to 7 million premature deaths per year;<sup>33</sup> 200,000 per year in the US alone.<sup>34</sup> Because plants can remove pollutants,<sup>35-48</sup> intensive greening could diminish air pollution particularly in areas of high roadway traffic. Increases in greenness could have other benefits as well, such as decreasing exposure to noise and light pollution, and buffering changes in ambient temperature. Thus, overall, the results of GHP could provide key insights into strategies for enhancing urban environments, improving public health, and mitigating the impact of climate change.

## **MATERIAL AND METHODS**

### **Study Objectives**

The objectives of GHP are to: 1) Determine the effect of a greening intervention on cardiovascular health of residents living in an urban neighborhood; 2) Quantify the impact of the greening intervention on neighborhood characteristics and air pollution and their contribution to cardiovascular health; 3) Assess the feasibility, sustainability, and suitability of the intervention; 4) Create a comprehensive database containing environmental, psychosocial, and clinical data to

support long-term studies and data-sharing for additional ancillary studies; and 5) Develop an implementation framework to enhance health in urban neighborhoods by increasing area greenery.

### **Overview of the Study Design.**

The GHP is a community-based quasi-experimental trial, with nonequivalent groups design,<sup>49</sup> (National Clinical Trial number 03670524). The project tests the hypothesis that an increase in neighborhood greenery diminishes CVD risk by decreasing the levels of air pollution. To test this hypothesis, we collected baseline data on neighborhood characteristics and community health from 8 target (T) and 8 control (C) clusters of racially diverse, low-to-moderate income neighborhoods in Louisville, KY. We acquired aerial hyperspectral and Light Detection and Ranging (LiDAR) scans of the area and conducted stationary and mobile monitoring to develop high-resolution maps of ultrafine particles and select criteria air pollutants. We undertook extensive and frequent community engagement activities, and conducted in-person exams to acquire baseline physical and psychosocial data from >500 individuals from both C and T clusters. After acquiring baseline data, we planted >8000 mature trees and shrubs. Upon completion of planting, we evaluated changes in pollution and reacquired health data from in-person exams. To examine the effects of the greening intervention, we compare changes in CVD risk, psychosocial characteristics, and air pollution in C and T clusters. We will conduct follow up studies to determine how a progressive increase in the greenery will affect area characteristics and individual health in the neighborhood.

*Selection and evaluation of residential clusters:* To designate residential clusters for greening intervention, we evaluated existing tree cover, demographics, population density, and area traffic of all residential areas in Louisville, Kentucky, USA. We adopted a hierarchal approach for site

selection to include areas with <30 % canopy, landcover suitable to implement an intervention to achieve substantially greater than 30% canopy and sufficient size and population density for enrollment of >700 study participants. Using this approach, we selected neighborhoods mostly within the 40214 zip code in south Louisville, although some areas extended slightly into other zip codes. The total area encompassed 4 sq. miles and has a population of 28,000 consisting of a little over 10,000 residential addresses. The median household income of the neighborhood is \$32,600. The population is 54% White, 29% Black, 9% of 2 or more races, 8% of another race, and 11% Hispanic/Latino of any race; 32% of the population is 40-64 years old. To assess tree resources, we acquired aerial imagery of the area using a sub-meter multispectral and LiDAR sensors on a Cessna aircraft (Figure 1). In addition, certified arborists collected Global Positioning System (GPS) locations and the condition of 950 trees in the area. These ground truth points were used to train and validate LiDAR and hyperspectral data (Figure 1). For the study, the central zone of the area was divided into 8 clusters targeted for the greening intervention (Figure 2). To ensure geographic and demographic similarity, 8 clusters in the adjacent area, with greatest confluence of matching canopy cover, Normalized Difference Vegetation Index (NDVI), exposure to major roadways (I-264), total population, pollution exposure, household income, age, and ethnicity were designated as control (C).

*Community Engagement:* Before finalizing the study area, we met with community leaders and residents to seek their input and participation. From conversations with community leaders and residents, we learned that there was interest in neighborhood improvements, connections between nature and health, and partnering with the university. Furthermore, in a recently completed neighborhood plan, preservation of mature trees and new plantings were identified as a neighborhood goal. We met with the Beechmont Neighborhood Association consisting of 10

board members and 5 community members, who were excited to participate in the project. We identified 50+ area businesses and organizations in the area and met representatives of each to seek their perception of the study. We engaged a local non-profit (Louisville Grows) to participate in our community engagement activities that included door-to-door canvassing. We participated and continue to participate in many community meetings and events each year as well as host opportunities for community member participation (e.g., health screenings, *Art and Literature Showcase*, *Health and Nature Photo Contests*, community presentations on environmental topics followed by question-and-answer sessions). Often, rather than holding separate GHP events, we support initiatives of community organizations, such as by volunteering and providing services. We have developed, and continue to develop, communication materials, including a website and regular updates, a quarterly newsletter, social media posts, infographics, and presentations for specific audiences, including schools and businesses. With this engagement and subsequent follow-up activities, we have developed an ongoing understanding of the community's viewpoint and beliefs. Our conversations and relationships are ongoing, our communications are bi-directional, and learning occurs via multiple pathways. At the project's inception, we formed a Community Advisory Board (CAB) populated by residents of the study area. The CAB meets quarterly and provides important insights and advice on GHP as well as community perspectives.

Community relationships are vital to the project. In a recent survey (Dec 22-Jan 23) of study participants and tree recipients (N=292), most respondents (89.7%) perceived GHP as a "great project." Additionally, most (94.4%) believed that GHP trees would improve their health, and 92.8% indicated that GHP's work enhances their community. Responses indicated increases in residents' awareness of the effects of greenness and air quality on health (88.7% and 84.6%,

respectively), the effects of the environment on heart disease (60.3%), the general positive aspects of spending time outdoors (68.5%), and the positive aspects of their community (60.3%). Moreover, most respondents (93.5%) perceived added trees as an improvement to the appearance of an area park. Notably, most (96.6%) hoped that GHP will continue working in their community.

*Health Study Data Collection:* Prior to the health study recruitment, we began to build our presence in the community and to foster awareness of the GHP. Curated recruitment materials were selected to develop cohesive branding and build awareness of the project. These materials were designed to specifically draw the attention of those interested in the environment, their neighborhood, and altruism. These cohesive and visually recognizable materials were used in a series of harmonized campaigns that included large community billboards and posters at bus stops, direct-to-resident mailers, in-person canvassing campaigns with door hangers, and digital imagery for social media placement. Each direct mail campaign for a wave of study visits consisted of a minimum of 3 touches for >10,000 residential addresses with a return of about 5-10% of those contacted completing study visits. Digital media campaigns garnered 50,000 impressions per week and click through rate of 0.16%. Our campaign also allowed us to engage in community events and meetings to attend, distribute GHP materials and to answer questions about the project. To supplement recruitment and community awareness, if they desired, enrolled participants were provided with approved recruitment materials to share with community members as well as yard signs to place at their residence with GHP branding and contact information. Retention efforts for returning participants included annual thank you events, birthday and holiday cards, community events, quarterly demographic updates as well as raffles for returning early in each wave. Returning participants received 3 touches by mail (either



postcard or flyer) and 3 touches by email if they had a valid email address on file. Participants who did not respond to these methods of contact would be contacted by study staff via phone. We attempt a minimum of 4 unreturned phone calls prior to considering them a non-returner for that wave. Participants who reported moving out of the study area and still resided in Jefferson County, Kentucky, were allowed to continue with the study as an additional control population. All participants who never returned any method of contact for at least 2 waves or reported living outside of Jefferson County were not included in subsequent waves of visits.

*Green Intervention:* After the Wave 2 (2021) in-person exam, we planted trees and shrubs in T cluster neighborhoods (Figure 2). Because in comparison with deciduous trees, evergreen trees and shrubs are much more efficient at removing pollutants,<sup>50-53</sup> and are green year-round, we planted mostly evergreens of 42 different species from 5 families (i.e., Pinaceae, Cupressaceae, Taxaceae, Aquifoliaceae, and Magnoliaceae). We also planted some deciduous trees mainly Oak, Dogwood, and Serviceberry in residential areas and parks. To maximize biodiversity, we aimed to plant no more than 10% of the trees from the same species. Tree and shrubs were purchased from nurseries (in KY, OH, TN, IN, PA, and OR) and shipped to Louisville on trucks and temporarily stored in a staging area and spaded in at different sites. At baseline 26,256 trees existed in the study area, with 6,108 in T clusters and the rest in C clusters (Figure 2). At a cost of > 111,750-person hours, we planted 8,425 evergreen trees and shrubs and 630 deciduous trees in the T clusters, which more than doubled the number of trees in these areas. In addition, we treated 41 mature ash trees in the T clusters for infestation to prevent loss of tree canopy.

We sited 40% of planting in proximity to residences, while considering variables such as community and residential choices, soil characteristics, traffic density, codes, setbacks, signage visibility, and pedestrian safety. In addition, we conducted extensive plantings near roadways,

mostly in the form of designed roadside barriers. We planted roadside trees in a multi-planting structure with both arbors and shrubs to enhance pollutant dispersal.<sup>54</sup> Design parameters for roadside barriers were optimized to maximize pollution capture and dispersion with large trees in the back and smaller trees or shrubs in front. For each area, we targeted a wide distribution of species; considering sun exposure, soil type, disease, hydrology, community preference, aesthetics, and plant availability and suitability of the space for planting trees.

*Measurements of Air pollution and Other Neighborhood Characteristics:* We conducted and continue to conduct fixed site and mobile measurements of air pollution to estimate small-area variations. We use these data for LUR modeling to generate residence-level annual average ambient air pollutant concentrations. Passive samplers collect NO<sub>x</sub>, NO<sub>2</sub>, and O<sub>3</sub> at 60 fixed sites using the location-allocation algorithm, with consistent temporal coverage (two weeks every two months) since 2018. Mobile platform measurements for ultrafine particle (UFP) number concentration, operationally defined as the concentration measured by a mixing condensation particle counter, are conducted by driving each public street and alley in the GHP study area multiple times over different times of day, days of week and season. Temperature monitors were added to the 60 passive sampler sites in November 2022. Noise was measured in collaboration with the Federal Aviation Administration (FAA) using high-quality Class 1 sound level meters. Four 2-to-3-week campaigns were conducted with 6-12 monitoring sites per campaign. To measure light pollution, we plan to collect data (5 years before and 5 years after planting) from the satellite-based Visible Infrared Imaging Radiometer Suite of instruments to measure the NDVI while accounting for non-vegetative influences on light from municipal GIS records.

*In-person exams:* To acquire health data, we invited residents to participate in the study at in-person exams conducted at study sites throughout the GH neighborhood from May to October.

Participants were compensated \$150 per visit. The study was approved by the University of Louisville IRB and all participants signed informed consent. We used 7 different sites that rotated and spanned the entire area to ease transportation and site-specific perception barriers. Study visits were scheduled over the course of all 7 days of the week with both daytime and evening hours to facilitate and maximize participation. These study visits were set up similar to a health fair allowing several participants per study visit that lasted several hours. There was a station set up for each measure which allowed participants to efficiently progress through the visit with less time and staff burden. During these in-person exams, participants were interviewed to obtain demographic data and to determine their medical history and lifestyle using validated questionnaires. Psychosocial factors were also assessed using validated questionnaires for stress,<sup>55</sup> well-being,<sup>56</sup> and social cohesion.<sup>57</sup>

We conducted the first wave of exams in 2018-2019 and then after a hiatus due to COVID-19 in 2020, we resumed study visits in 2021 (Figure 1). The format of the visits changed due to infection control protocols. Instead of rotating through the community, we stayed at an accessible location in the study area, and we invited participants to self-schedule appointments and complete surveys online prior to their in-person visit, reducing both staff and participant burden as well as contact time with individuals. If participants were not comfortable using our electronic system, we had dedicated study staff who answered phone calls and assisted participants in completing their surveys. Additionally, we began acquiring data on SARS-CoV-2 infection and vaccinations. In 2021, we recruited 545 participants, of which 416 were repeat visits, and we recruited 561 participants in 2022 of which 448 were repeat visits (Figure 3). Demographic characteristics of Wave 1 participants is shown in Table 1. We recruit individuals between 25-70 years of age, this will allow us to understand CV dysfunction due to pollutant

exposure across the lifespan.<sup>58</sup>

During the in-person exam, we use standardized interviews to collect details about participants' medical history, diet, exercise, and socioeconomic status using procedures similar to our previous Louisville Healthy Heart (LHHS) study (Table 2).<sup>3, 59</sup> Psychosocial factors are assessed using validated questionnaires for stress,<sup>60</sup> well-being,<sup>61</sup> and social cohesion.<sup>62</sup> Biological samples (blood, urine, nail, and hair) are obtained and stored. These are used for measuring biomarkers of exposure, stress<sup>63, 64</sup> and CVD risk (Table 2). Trained research personnel use standardized procedure to measure height, weight, and waist and hip circumference (Table 3). To assess CVD risk, we acquire brachial blood pressure, arterial stiffness (augmentation index; AI, augmentation pressure, and pulse pressure), aortic systolic pressure and SEVR derived from pulse wave analysis using SphygmoCor, which provides highly reproducible values.<sup>65-67</sup> Measures of arterial stiffness are positively and robustly associated with increased risk for CV events,<sup>68</sup> and are associated with atherosclerosis, hypertension, stroke, Alzheimer-type dementia, and kidney disease. They provide novel and clinically-relevant information beyond that provided by standard risk factors; have been increasingly incorporated into longitudinal cohort studies.<sup>68</sup> Measures of arterial stiffness complement blood pressure measurement but can also predict the onset of hypertension, cardiovascular mortality, incident cognitive decline and coronary artery disease.<sup>68</sup> Previous work<sup>69</sup> and our recent studies<sup>70</sup> show that these measures are particularly sensitive to air pollution. Additionally, in a sub-set of participants, we measure flow mediated dilation as a measure of vascular health. Given the respiratory implications of air pollution we measure lung function by spirometry and oscillometric methods. The in-person exam takes 45 min to complete, while surveys take between 45-90 min.

*Analysis Plan:* To date, we have enrolled 964 unique participants who we will contact for post-intervention follow-up visits for Waves 4. We expect that there will be at least 200 (C) and 200 (T) participants after attrition. For longitudinal analysis, the sample size is justified in terms of our primary outcome – the augmentation index (AI). For sample size calculation, we used a two-sample one sided *t*-test for comparing the AI means in different groups. Due to one primary outcome variable, we set  $\alpha=0.05$  and with 90% power ( $\beta=0.20$ ), we can detect an effect size of 0.24 SD (Table 4). To calculate power, we assumed a conservative positive correlation of 0.5 between two repeat observations. Furthermore, we can detect moderate to large effect sizes<sup>71</sup> after adjusting for 3 covariates, which are moderately split (25-50%) in the population, using linear and logistic regression models.<sup>72</sup> After pooling samples across multiple waves, we will have larger number of observations. Not only will we have at least 90% power to detect these differences in continuous outcomes and binary outcomes, we will also be able to adjust for multiple covariates and test for the contribution of demographic factors and mediators.

We will use a pre-post quasi-experimental design (QED) with an equivalent control group to examine the effect of the greening. To assess balance, we will compare demographics, baseline health parameters, and neighborhood characteristics in C and T clusters. We will use linear mixed effects models (considering cluster as a random intercept effect) to examine the effect of the intervention on within-group and between-group differences in the primary (AI) and secondary individual health outcomes across all waves. Because we expect that the ‘dose’ of the greening intervention will increase over time, we will include an interaction between the in-person exam wave and cluster. These models will allow us to simultaneously account for the individual-level and cluster-level influences. To rule out historical bias and secular trends, we will compare T clusters with C clusters. The total effect of the intervention on individual health

measures will be estimated at each wave as the difference in average change from baseline to wave, between C and T clusters. Models will be adjusted for demographic variables and other relevant confounders identified using a directed acyclic graph (DAG). The consistency of intervention effects on the primary outcomes will be explored in predefined subgroups that could influence an individual's susceptibility to greening (i.e., time activity patterns), including sex, education, co-morbidities, and age categories. To strengthen internal validity, we will identify individuals with high and low exposures to investigate a “dose response” effect. As in our previous analyses of clinical trials, we will conduct case-controlled backward analysis dichotomizing participants that do or do not show an effect to identify potential non-responders and their characteristics.<sup>73, 74</sup>

*Sustainability:* To ensure sustainability, we will maintain the greening intervention. Newly planted trees, especially mature trees, require intensive care and watering for a minimum of the first two years. We will continue to water planted trees during summer (with more watering should there be <1 inch of rainfall over 10 days). Even with regular maintenance, we anticipate 8-11% mortality per year during the initial years, which we intend to monitor annually and remove and replace dead trees. To strengthen sustainability, we will continue close collaboration our CAB and area neighborhood associations and engage in regular community-wide presentations. We have contracted trained arborists to ensure that tree care needs are being met throughout the growing season. We have ongoing dialogue with the community to identify any issues that arise. For example, when the community raised concern regarding the cost of removing fallen or damaged trees, we set up a community fund to assist, even if these trees were not planted by us.

*Data Dissemination and Data sharing:* We will publish our findings in scientific peer-reviewed

journals and present at scientific conferences. We will continue to engage with the lay press and share our experience with non-profit organizations such as The Nature Conservancy, urban planners, developers, and park services of different cities. We expect that greater visibility of the project will increase awareness of the value of greening and may promote implementation of similar interventions in cities worldwide. Moreover, several aspects of the project are ripe for collaboration in other areas than those currently included in GHP. These areas include studying the effects of greenness on asthma, sleep, respiratory disease, childhood development, birth outcomes, exercise, cancer, dementia, crime, economic status, storm water runoff, area biodiversity, heat island effect, energy consumption, and climate resilience. To enable studies in such diverse topics, we will deposit our data on the American Heart Association (AHA) Precision Medicine Platform. To gain access, investigators submit a brief manuscript proposal, which is reviewed by a manuscript committee (consisting of 6 investigators).

## **DISCUSSION**

The GHP will provide a rigorous and direct evaluation of the link between greenspaces and cardiovascular health. Findings of the project will help delineate the contribution of environmental, psychological, social, and physical factors to the beneficial effects of greenery and guide the development of healthy and sustainable urban neighborhoods. By evaluating the impact of greenness on pollution and temperature, the project could provide new insights into natural climate solutions. Lessons learned from implementation and sustainability, and the long-term cost-benefit analyses of the greening intervention could inform the development of large-scale environmental interventions to promote community health. Collectively, these results could inform new public health policies, better land use and development codes, tree ordinances, and facilitate evidence-based optimization of ongoing greening efforts worldwide. This information

will be particularly critical as greening efforts worldwide are intensified to mitigate the adverse environmental effects of climate change.

Assessment of the longitudinal impact of the greening intervention will enable us to evaluate the long-term health effects of greening and how they may be related to changes in mental health and well-being and/or physical activity, standard cardiovascular risk factors, inflammation or stress. We also will be able to determine changes in physical activity and social cohesion and delineate the extent to which such behavioral changes contribute to the health effects of greenness. Our high-resolution mapping of area pollution will provide comprehensive information about how greenness affects pollutant levels and distribution, how specific patterns of planting alter pollution at specific sites, and how this distribution is related to health outcomes. To obtain a larger regional context, we will analyze our data within the context of regional data and the background levels of air pollution. Estimates of air pollution reduction vary significantly with different methodologies, assumptions about deposition rates and modeling approaches, and our analysis will provide comprehensive information about the extent of pollution reduction as a function of tree species, structure and placement. These results may provide new insights into the effects of urban vegetation on neighborhood temperature as well as noise and light pollution and will be directly relevant to the development of new public health policies and optimization of ongoing planting efforts in cities around the world to enhance public health and mitigate the effects of climate change. Collectively, the GHP will contribute to the formulation of an imitable paradigm, a model that could be readily replicated in other cities in both developed and developing countries – to reduce the levels of pollution, increase climate resilience and improve human health in urban environments.



## ACKNOWLEDGEMENTS

The Green Heart Project is supported by grants from the National Institutes of Environmental Health Sciences (ES 029846, ES030283) and The Nature Conservancy. We thank the community for their partnership and the Kentucky Transportation Cabinet and the Louisville Metro Government for providing access to public rights of way and staging spaces for the vegetation. We also acknowledge the in-kind support of the Federal Aviation Administration (FAA) and US DOT Volpe Transportation Research Center with equipment and personnel for noise monitoring. We also thank Dr. Jason Su, University of California at Berkeley for help in designing the passive sampling network, and Col. Blaine Hedges and his team at Government Solutions and Services for their help in planting trees.

		Wave 1				Wave 2				Wave 3			
		Total	C	T	O	Total	C	T	O	Total	C	T	O
Median Age (25th, 75th)		735 (38, 61)	432 (39, 61)	298 (37, 60)	2 (33, 38)	539 (38, 62)	324 (39, 63)	203 (39, 62)	4 (36, 43)	555 (38, 63)	327 (38, 63)	201 (40, 64)	8 (36, 55)
Sex <sup>a</sup>													
	Male	288 (39)	177 (41)	109 (37)	1 (50)	220 (41)	143 (44)	74 (36)	2 (50)	229 (41)	141 (43)	76 (38)	4 (50)
	Female	447 (61)	255 (59)	189 (63)	1 (50)	315 (59)	179 (56)	129 (64)	2 (50)	323 (58)	184 (56)	125 (62)	4 (50)
Race <sup>b</sup>													
	NHW	564 (77)	308 (71)	253 (85)	2 (100)	441 (82)	250 (77)	183 (90)	4 (100)	440 (79)	243 (74)	178 (89)	4 (50)
	NHB	125 (17)	90 (21)	33 (11)	0 (0)	65 (12)	50 (15)	13 (6)	0 (0)	83 (15)	60 (18)	17 (8)	4 (50)
	HW	10 (1)	8 (2)	2 (1)	0 (0)	7 (1)	6 (2)	1 (1)	0 (0)	9 (2)	8 (2)	1 (1)	0 (0)
	HB	2 (0)	2 (0)	0 (0)	0 (0)	0 (0)	0 (0)	0 (0)	0 (0)	1 (0)	1 (0)	0 (0)	0 (0)
	Other	34 (5)	24 (6)	10 (3)	0 (0)	24 (5)	16 (6)	6 (3)	0 (0)	21 (4)	15 (5)	5 (2)	0 (0)
Education <sup>c</sup>													
	High School or under	236 (32)	145 (34)	89 (30)	1 (50)	134 (25)	84 (37)	46 (23)	1 (25)	162 (30)	99 (31)	55 (28)	4 (57)
	Some College or 2-year degree	282 (39)	168 (39)	111 (37)	1 (50)	189 (36)	117 (37)	69 (34)	2 (50)	178 (33)	114 (36)	53 (27)	3 (43)
	4-year degree or more	211 (29)	114 (27)	97 (33)	0 (0)	203 (39)	114 (36)	86 (43)	1 (25)	204 (38)	107 (33)	91 (46)	0 (0)
Income <sup>d</sup>													
	<\$50K	379 (54)	225 (54)	150 (54)	2 (100)	244 (48)	143 (48)	93 (48)	3 (75)	263 (51)	159 (53)	90 (47)	7 (100)
	\$50K or more	316 (45)	188 (46)	128 (46)	0 (0)	262 (52)	158 (52)	102 (52)	1 (25)	255 (49)	142 (47)	103 (53)	0 (0)

Table 1: Demographic Characteristics of GHP participants

**Eligible participants with all 3 Waves n= 329 (Control area n= 191; Treatment area n= 138)**

**Participants missing C/T Designation: Wave 1 n= 3; Wave 2 n= 8; Wave 3 n= 19**

<sup>a</sup> Sex missing: Wave 2 n= 4; Wave 3 n= 3; <sup>b</sup> Race missing: Wave 2 n= 2; Wave 3 n= 1; <sup>c</sup> Education missing: Wave 1 n= 6; Wave 2 n= 13; Wave 3 n= 11; <sup>d</sup> Income missing: Wave 1 n= 40; Wave 2 n= 33; Wave 3 n= 37

Table 2: Components of the In-Person Green Heart Examination

	Description
<b>Information collected</b>	
Personal Information	Name, date-of-birth, social security number, biologic sex (men or women) race (Black, White, other [American Indian/Alaskan Native, Asian, Hawaiian/Pacific Islander, other], age, education (high school or below, some college, college degree or higher) and annual household income (<\$20,000, \$20,000-\$44,999, \$45,000-\$64,999, ≥65,000)
Contact information	Residential address, list of household members
Informed consent	Obtain signed informed consent that complies with all required standards Permission to contact for any future studies
Medical release	All study personnel to access participant's medical records
Medical history	General health status, cardiovascular disease history. Participants were asked to self-report their history of the following CVD conditions and events (coded as yes, no, do not know): stroke/transient ischemic attack, carotid endarterectomy or angiography, stenting/carotid angioplasty, heart attack/myocardial infarction, angina/stable coronary artery disease/atherosclerosis, heart valve disease, heart flutter/atrial fibrillation, percutaneous coronary intervention, and congestive heart failure. A composite variable, previous CVD, was also created, indexing whether or not participants had experienced any of the CVD events list above (coded as yes or no). For CVD risk participants reported on dyslipidemia/high cholesterol, diabetes and hypertension/high blood pressure (coded as yes, no, borderline, or do not know).
Medication use	Current use of medications for cardiovascular risk factor reduction and cardiovascular disease, analgesics, kidney or cancer drugs.
CVD risk	Framingham Risk Score was calculated using the following variables: sex (men or women), age (years), systolic blood pressure (millimeters of mercury), treatment for hypertension (yes or no), smoking (yes or no), diabetes (yes or no), high-density lipoprotein (HDL) (milligrams per deciliter), and total cholesterol (milligrams per deciliter).
BMI	Calculated from self-reported height and weight
Family history	Family's medical history of chronic disease
Occupational history	Specific occupation and aspects of occupation related to chronic disease and environmental exposures
Health care	Health insurance, use of health care facilities, barriers to health care and utilization access
Residential characteristics	Age of the house, house characteristics, attached car garage
Diet	Questions on dietary habits over the past 24 h plus a food propensity questionnaire
Smoking	Current smoker (yes or no), ever use of cigars and pipes, use of e-cigarettes and exposure to secondhand smoke. Smoking status confirmed by urinary cotinine.
Drug use	Use of recreational drugs, including marijuana

Alcohol use	Alcohol use and duration
Exercise	Do you exercise regularly (>10 min each time)? Yes or no.
Perceived Stress	Global measurements of perceived stress. <sup>55</sup>
Well-being	Mental health was assessed using the Warwick Edinburgh Mental Well-Being Scale (WEMWBS) which is focused on positive aspects of mental health, including positive affect, fulfilling interpersonal relationships, and positive functioning. <sup>56</sup>
Depression	Depression status was evaluated based on responses to PHQ-9 items and not clinically diagnosed. <sup>75</sup>
Social cohesion	Social cohesion was assessed using a set of questions designed to capture individual residents' own level of integration in the neighborhood as well as the overall level of social cohesiveness they perceive to exist in the neighborhood. The questions also capture neighborhood physical and social disorder. <sup>57</sup>
Perception of Greenness	Individual perceptions of perceived greenness of neighborhood were measured using a scale comprising 15 perceived green items such as "lots of greenery around my local area, little," "no lawn nearby," or "walking or bicycle paths or trails nearby." <sup>76</sup>
Thought on nature and Time spent in nature	View about nature, and daily time spent in nature

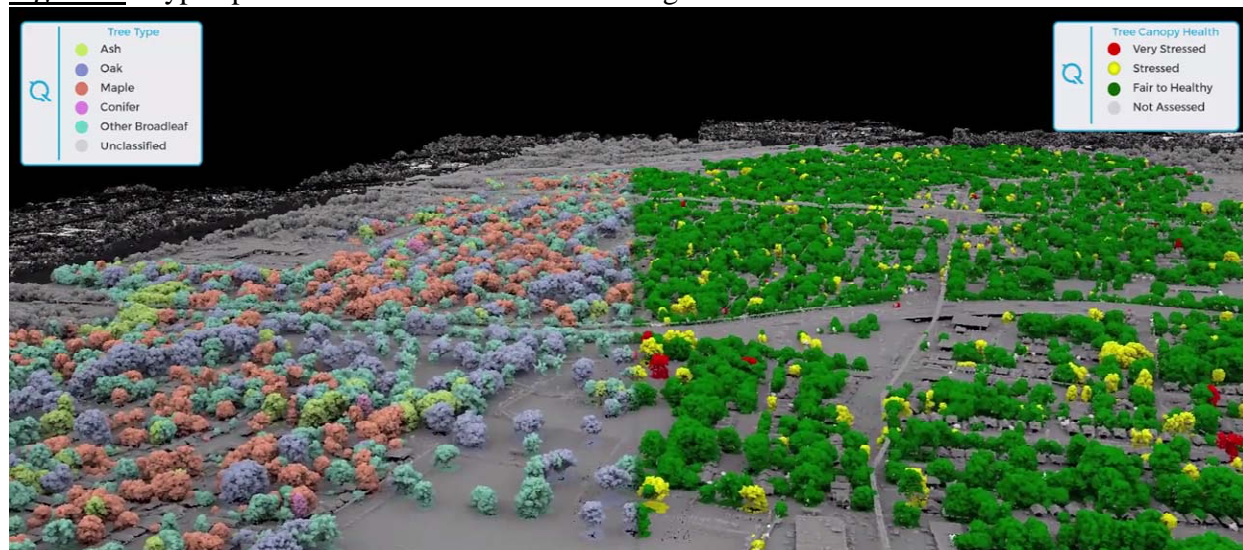
---

Table 3: Exam Procedures

Description	
Procedures	
Anthropometry	Weight, standing height, lean muscle mass, water weight (InBody scan), waist and hip circumference
Blood pressure	Following a 10-min rest, blood pressure (systolic and diastolic) and heart rate were measured a total of 3 times, with a minute rest between each measure.
Arterial stiffness	Immediately following measurements of blood pressure aortic augmentation index (AIx) was measured using SphygmoCor XCEL. AIx was calculated via waveform analysis. <sup>66</sup>
Phlebotomy	Obtain blood for laboratory analysis. Whole blood, serum, plasma and leukocytes, paxgene tubes stored for future analysis
Fresh blood measurements	Mononuclear cells, endothelial progenitor cells, platelet-monocyte aggregates, circulating microparticles
Stored plasma measurements	LDL, HDL, total cholesterol, triglycerides, cotinine, HOMA-IR, HbA1c, cytokine panel, including hs-CRP, TNF- $\alpha$ , MCP-1, LI-8, and sCD40L.
Spot urine collection	Collected early on arrival at examination site. Stored for analysis of VOC, nicotine, and catecholamine metabolites.
Hair collection	For measurements of metals and cortisol. <sup>63</sup> Scalp hair when possible, otherwise chest or armpit hair.
Nail collection	Two cm nail clipping for measuring metals

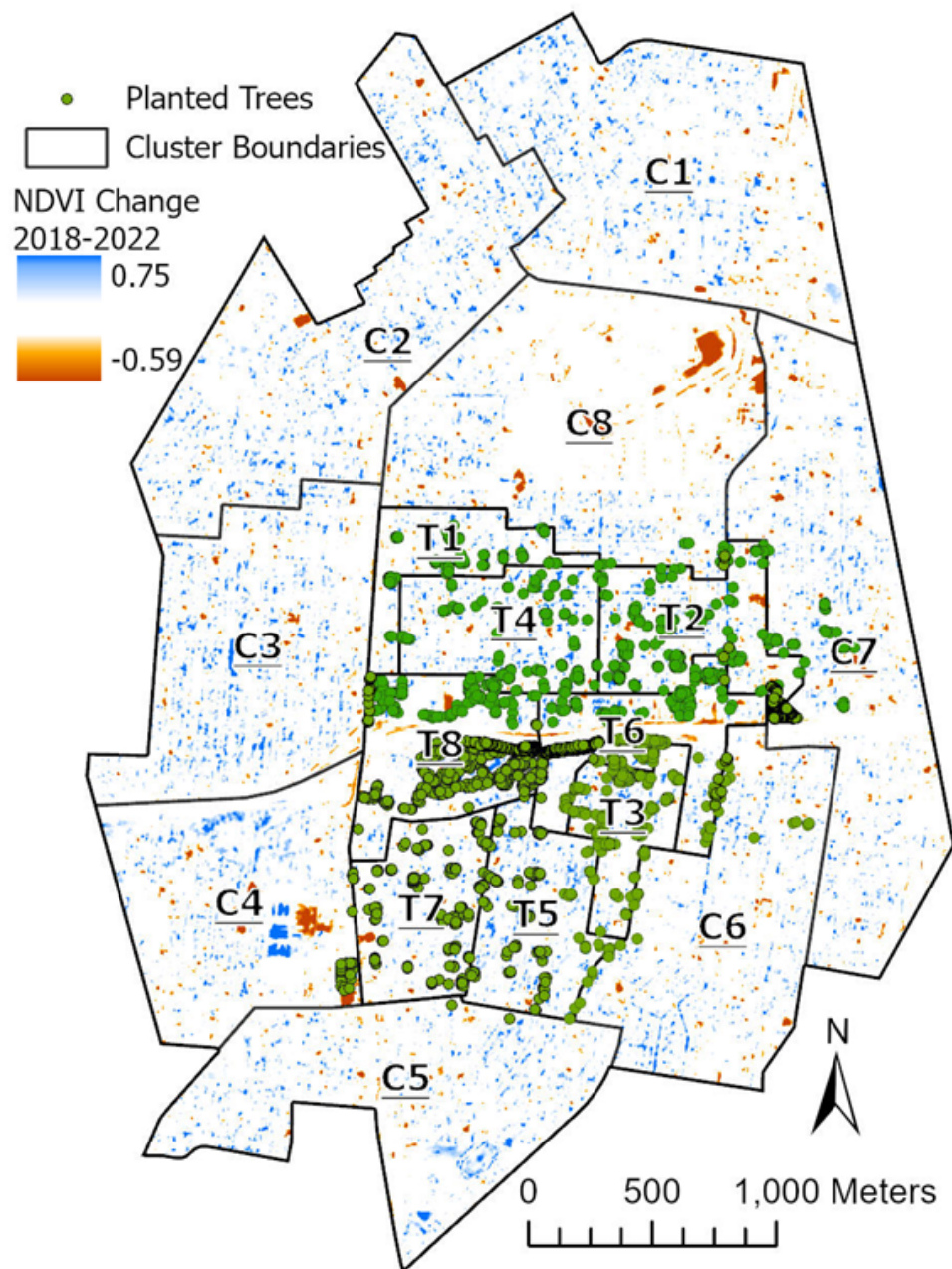
<b>Outcomes</b>	Value	Value	Effect size	Effect size	Intra-individual	Power	Power
<b>Primary</b>	Year 1	Year 4	Intra-individual	Population	Variation	Population	Intra-individual
AI	-24.3±8.6	-28.9±10	-25.8	-30.9	5.2	90%	95%
<b>Secondary</b>							
Log PMA <sup>1</sup>	-2.22±0.6	-2.22±0.6	7.7%	-9.24%	0.04	90%	95%

**Figure. 1:** Hyperspectral scan of the Green Heart neighborhood

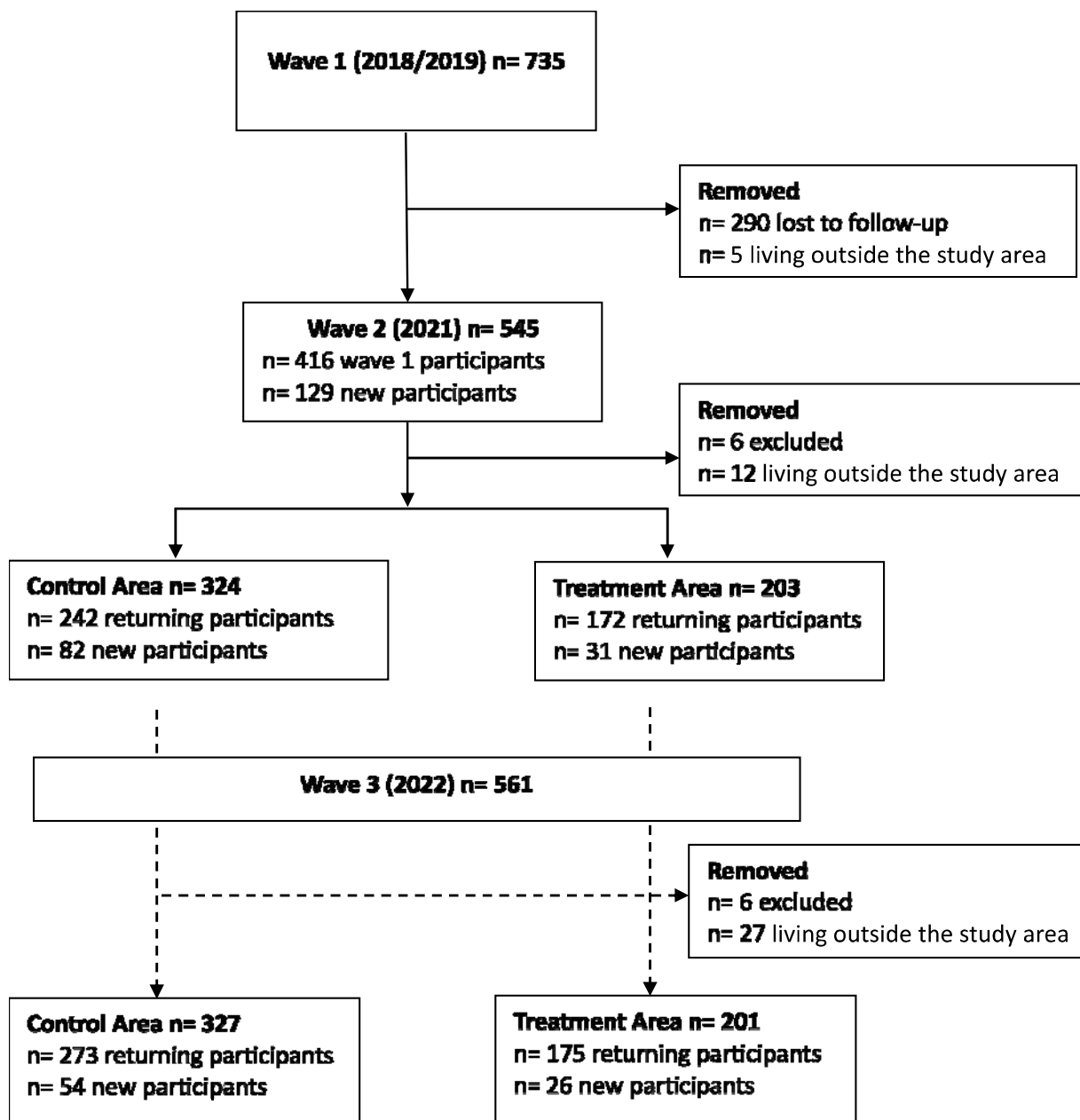




**Figure 2:** Target (T) and Control (C) neighborhood clusters within the study area. Areas in blue show an increase, whereas areas in red a decrease in NDVI. Planting areas are shown in green.



**Figure 3.** Flow Diagram of individuals who attended study visits and are eligible (Green Heart Study (2018-2022); Louisville, Kentucky). Solid and dashed lines indicate pre- and post-greening intervention, respectively. Eligible participants with study visits in all 3 Waves n=329 (Control Area n= 191; Treatment n=138).







## References

1. O'Toole TE, Hellmann J, Wheat L, Haberzettl P, Lee J, Conklin DJ, Bhatnagar A and Pope CA, 3rd. Episodic exposure to fine particulate air pollution decreases circulating levels of endothelial progenitor cells. *Circ Res*. 2010;107:200-3.
2. Riggs DW, Malovichko MV, Gao H, McGraw KE, Taylor BS, Krivokhizhina T, Rai SN, Keith RJ, Bhatnagar A and Srivastava S. Environmental exposure to volatile organic compounds is associated with endothelial injury. *Toxicol Appl Pharmacol*. 2022;437:115877.
3. DeJarnett N, Yeager R, Conklin DJ, Lee J, O'Toole TE, McCracken J, Abplanalp W, Srivastava S, Riggs DW, Hamzeh I, Wagner S, Chugh A, DeFilippis A, Ciszewski T, Wyatt B, Becher C, Higdon D, Ramos KS, Tollerud DJ, Myers JA, Rai SN, Shah J, Zafar N, Krishnasamy SS, Prabhu SD and Bhatnagar A. Residential Proximity to Major Roadways Is Associated With Increased Levels of AC133+ Circulating Angiogenic Cells. *Arterioscler Thromb Vasc Biol*. 2015;35:2468-77.
4. Leeson GW. The growth, ageing and urbanisation of our world. *Journal of Population Ageing*. 2018;11:107-115.
5. Williams F. *The nature fix: Why nature makes us happier, healthier, and more creative*: WW Norton & Company; 2017.
6. Crouse DL, Pinault L, Christidis T, Lavigne E, Thomson EM and Villeneuve PJ. Residential greenness and indicators of stress and mental well-being in a Canadian national-level survey. *Environ Res*. 2021;192:110267.
7. Pun VC, Manjourides J and Suh HH. Association of neighborhood greenness with self-perceived stress, depression and anxiety symptoms in older U.S adults. *Environ Health*. 2018;17:39.
8. Triguero-Mas M, Donaire-Gonzalez D, Seto E, Valentin A, Martinez D, Smith G, Hurst G, Carrasco-Turigas G, Masterson D, van den Berg M, Ambros A, Martinez-Iniguez T, Dedele A, Ellis N, Grazulevicius T, Voorsmit M, Cirach M, Cirac-Claveras J, Swart W, Clasquin E, Ruijsbroek A, Maas J, Jerret M, Grazuleviciene R, Kruize H, Gidlow CJ and Nieuwenhuijsen MJ. Natural outdoor environments and mental health: Stress as a possible mechanism. *Environ Res*. 2017;159:629-638.
9. Banay RF, James P, Hart JE, Kubzansky LD, Spiegelman D, Okereke OI, Spengler JD and Laden F. Greenness and Depression Incidence among Older Women. *Environ Health Perspect*. 2019;127:27001.
10. Liu Y, Wang R, Xiao Y, Huang B, Chen H and Li Z. Exploring the linkage between greenness exposure and depression among Chinese people: Mediating roles of physical activity, stress and social cohesion and moderating role of urbanicity. *Health Place*. 2019;58:102168.
11. Pfeiffer JA, Hart JL, Wood LA, Bhatnagar A, Keith RJ, Yeager RA, Smith T, Tomlinson M, Gilkey D, Kerstiens S, Gao H, Srivastava S and Walker KL. The importance of urban planning: Views of greenness and open space is reversely associated with self-reported views and depressive symptoms. *Popul Med*. 2021;3.
12. Jimenez MP, Oken E, Gold DR, Luttmann-Gibson H, Requia WJ, Rifas-Shiman SL, Gingras V, Hivert MF, Rimm EB and James P. Early life exposure to green space and insulin resistance: An assessment from infancy to early adolescence. *Environ Int*. 2020;142:105849.
13. Fan S, Xue Z, Yuan J, Zhou Z, Wang Y, Yang Z, Yang B, Dong G and Zhang Z. Associations of Residential Greenness with Diabetes Mellitus in Chinese Uyghur Adults. *Int J Environ Res Public Health*. 2019;16.

14. Yang BY, Markevych I, Heinrich J, Bowatte G, Bloom MS, Guo Y, Dharmage SC, Jalaludin B, Knibbs LD, Morawska L, Qian ZM, Chen DH, Ma H, Chen D, Lin S, Yang M, Liu KK, Zeng XW, Hu LW and Dong GH. Associations of greenness with diabetes mellitus and glucose-homeostasis markers: The 33 Communities Chinese Health Study. *Int J Hyg Environ Health*. 2019;222:283-290.
15. Tsai HJ, Li CY, Pan WC, Yao TC, Su HJ, Wu CD, Chern YR and Spengler JD. The Effect of Surrounding Greenness on Type 2 Diabetes Mellitus: A Nationwide Population-Based Cohort in Taiwan. *Int J Environ Res Public Health*. 2020;18.
16. He F, Wei J, Dong Y, Liu C, Zhao K, Peng W, Lu Z, Zhang B, Xue F, Guo X and Jia X. Associations of ambient temperature with mortality for ischemic and hemorrhagic stroke and the modification effects of greenness in Shandong Province, China. *Sci Total Environ*. 2022;851:158046.
17. Orioli R, Antonucci C, Scortichini M, Cerza F, Marando F, Ancona C, Manes F, Davoli M, Michelozzi P, Forastiere F and Cesaroni G. Exposure to Residential Greenness as a Predictor of Cause-Specific Mortality and Stroke Incidence in the Rome Longitudinal Study. *Environ Health Perspect*. 2019;127:27002.
18. Brochu P, Jimenez MP, James P, Kinney PL and Lane K. Benefits of Increasing Greenness on All-Cause Mortality in the Largest Metropolitan Areas of the United States Within the Past Two Decades. *Front Public Health*. 2022;10:841936.
19. Donovan GH, Prestemon JP, Gatzolis D, Michael YL, Kaminski AR and Dadvand P. The association between tree planting and mortality: A natural experiment and cost-benefit analysis. *Environ Int*. 2022;170:107609.
20. Iyer HS, James P, Valeri L, Hart JE, Pernar CH, Mucci LA, Holmes MD, Laden F and Rebbeck TR. The association between neighborhood greenness and incidence of lethal prostate cancer: A prospective cohort study. *Environ Epidemiol*. 2020;4:e091.
21. Kayyal-Tarabeia I, Michael Y, Lensky IM, Blank M and Agay-Shay K. "Residential greenness and site-specific cancer: A registry based cohort of 144,427 participants with a 21-years of follow-up, Tel-Aviv district, Israel". *Environ Res*. 2022;212:113460.
22. Wang Q, Goldberg MS, Labreche F and Ho V. The association between the incidence of post-menopausal breast cancer and residential greenness. *Cancer Epidemiol*. 2022;76:102094.
23. Liu XX, Ma XL, Huang WZ, Luo YN, He CJ, Zhong XM, Dadvand P, Browning M, Li L, Zou XG, Dong GH and Yang BY. Green space and cardiovascular disease: A systematic review with meta-analysis. *Environ Pollut*. 2022;301:118990.
24. Yeager RA, Smith TR and Bhatnagar A. Green environments and cardiovascular health. *Trends Cardiovasc Med*. 2020;30:241-246.
25. Ji JS, Zhu A, Bai C, Wu CD, Yan L, Tang S, Zeng Y and James P. Residential greenness and mortality in oldest-old women and men in China: a longitudinal cohort study. *Lancet Planet Health*. 2019;3:e17-e25.
26. James P, Banay RF, Hart JE and Laden F. A Review of the Health Benefits of Greenness. *Curr Epidemiol Rep*. 2015;2:131-142.
27. Jimenez MP, DeVille NV, Elliott EG, Schiff JE, Wilt GE, Hart JE and James P. Associations between Nature Exposure and Health: A Review of the Evidence. *Int J Environ Res Public Health*. 2021;18.
28. Twohig-Bennett C and Jones A. The health benefits of the great outdoors: A systematic review and meta-analysis of greenspace exposure and health outcomes. *Environ Res*. 2018;166:628-637.

29. Donovan GH, Gatzliolis D, Derrien M, Michael YL, Prestemon JP and Douwes J. Shortcomings of the normalized difference vegetation index as an exposure metric. *Nat Plants*. 2022;8:617-622.
30. Lozano R, Naghavi M, Foreman K, Lim S, Shibuya K, Aboyans V, Abraham J, Adair T, Aggarwal R, Ahn SY, Alvarado M, Anderson HR, Anderson LM, Andrews KG, Atkinson C, Baddour LM, Barker-Collo S, Bartels DH, Bell ML, Benjamin EJ, Bennett D, Bhalla K, Bikbov B, Bin Abdulhak A, Birbeck G, Blyth F, Bolliger I, Boufous S, Bucello C, Burch M, Burney P, Carapetis J, Chen H, Chou D, Chugh SS, Coffeng LE, Colan SD, Colquhoun S, Colson KE, Condon J, Connor MD, Cooper LT, Corriere M, Cortinovis M, de Vaccaro KC, Couser W, Cowie BC, Criqui MH, Cross M, Dabhadkar KC, Dahodwala N, De Leo D, Degenhardt L, Delossantos A, Denenberg J, Des Jarlais DC, Dharmaratne SD, Dorsey ER, Driscoll T, Duber H, Ebel B, Erwin PJ, Espindola P, Ezzati M, Feigin V, Flaxman AD, Forouzanfar MH, Fowkes FG, Franklin R, Fransen M, Freeman MK, Gabriel SE, Gakidou E, Gaspari F, Gillum RF, Gonzalez-Medina D, Halasa YA, Haring D, Harrison JE, Havmoeller R, Hay RJ, Hoen B, Hotez PJ, Hoy D, Jacobsen KH, James SL, Jasrasaria R, Jayaraman S, Johns N, Karthikeyan G, Kassebaum N, Keren A, Khoo JP, Knowlton LM, Kobusingye O, Koranteng A, Krishnamurthi R, Lipnick M, Lipshultz SE, Ohno SL, Mabweijano J, MacIntyre MF, Mallinger L, March L, Marks GB, Marks R, Matsumori A, Matzopoulos R, Mayosi BM, McAnulty JH, McDermott MM, McGrath J, Mensah GA, Merriman TR, Michaud C, Miller M, Miller TR, Mock C, Mocumbi AO, Mokdad AA, Moran A, Mulholland K, Nair MN, Naldi L, Narayan KM, Nasseri K, Norman P, O'Donnell M, Omer SB, Ortblad K, Osborne R, Ozgediz D, Pahari B, Pandian JD, Rivero AP, Padilla RP, Perez-Ruiz F, Perico N, Phillips D, Pierce K, Pope CA, 3rd, Porrini E, Pourmalek F, Raju M, Ranganathan D, Rehm JT, Rein DB, Remuzzi G, Rivara FP, Roberts T, De Leon FR, Rosenfeld LC, Rushton L, Sacco RL, Salomon JA, Sampson U, Sanman E, Schwebel DC, Segui-Gomez M, Shepard DS, Singh D, Singleton J, Sliwa K, Smith E, Steer A, Taylor JA, Thomas B, Tleyjeh IM, Towbin JA, Truelsen T, Undurraga EA, Venketasubramanian N, Vijayakumar L, Vos T, Wagner GR, Wang M, Wang W, Watt K, Weinstock MA, Weintraub R, Wilkinson JD, Woolf AD, Wulf S, Yeh PH, Yip P, Zabetian A, Zheng ZJ, Lopez AD, Murray CJ, AlMazroa MA and Memish ZA. Global and regional mortality from 235 causes of death for 20 age groups in 1990 and 2010: a systematic analysis for the Global Burden of Disease Study 2010. *Lancet*. 2012;380:2095-128.
31. Mozaffarian D, Benjamin EJ, Go AS, Arnett DK, Blaha MJ, Cushman M, de Ferranti S, Despres JP, Fullerton HJ, Howard VJ, Huffman MD, Judd SE, Kissela BM, Lackland DT, Lichtman JH, Lisabeth LD, Liu S, Mackey RH, Matchar DB, McGuire DK, Mohler ER, 3rd, Moy CS, Muntner P, Mussolino ME, Nasir K, Neumar RW, Nichol G, Palaniappan L, Pandey DK, Reeves MJ, Rodriguez CJ, Sorlie PD, Stein J, Towfighi A, Turan TN, Virani SS, Willey JZ, Woo D, Yeh RW, Turner MB, American Heart Association Statistics C and Stroke Statistics S. Heart disease and stroke statistics--2015 update: a report from the American Heart Association. *Circulation*. 2015;131:e29-322.
32. Khraishah H, Alahmad B, Ostergard RL, Jr., AlAshqar A, Albaghdadi M, Vellanki N, Chowdhury MM, Al-Kindi SG, Zanobetti A, Gasparrini A and Rajagopalan S. Climate change and cardiovascular disease: implications for global health. *Nat Rev Cardiol*. 2022;19:798-812.
33. Lelieveld J, Evans JS, Fnais M, Giannadaki D and Pozzer A. The contribution of outdoor air pollution sources to premature mortality on a global scale. *Nature*. 2015;525:367-71.

34. Caiazzo F, Ashok A, Waitz IA, Yim SH and Barrett SR. Air pollution and early deaths in the United States. Part I: Quantifying the impact of major sectors in 2005. *Atmospheric Environment*. 2013;79:198-208.
35. Bealey W, McDonald A, Nemitz E, Donovan R, Dragosits U, Duffy T and Fowler D. Estimating the reduction of urban PM 10 concentrations by trees within an environmental information system for planners. *Journal of Environmental Management*. 2007;85:44-58.
36. Beckett K, Freer-Smith P and Taylor G. Urban woodlands: their role in reducing the effects of particulate pollution. *Environmental pollution*. 1998;99:347-360.
37. Beckett KP, Freer-Smith P and Taylor G. Particulate pollution capture by urban trees: effect of species and windspeed. *Global change biology*. 2000;6:995-1003.
38. Buccolieri R, Gromke C, Di Sabatino S and Ruck B. Aerodynamic effects of trees on pollutant concentration in street canyons. *Science of the Total Environment*. 2009;407:5247-5256.
39. Escobedo FJ, Kroeger T and Wagner JE. Urban forests and pollution mitigation: Analyzing ecosystem services and disservices. *Environmental pollution*. 2011;159:2078-2087.
40. Escobedo FJ and Nowak DJ. Spatial heterogeneity and air pollution removal by an urban forest. *Landscape Urban Plan*. 2009;90:102-110.
41. Freer-Smith P, Holloway S and Goodman A. The uptake of particulates by an urban woodland: site description and particulate composition. *Environmental Pollution*. 1997;95:27-35.
42. Irga P, Burchett M and Torpy F. Does urban forestry have a quantitative effect on ambient air quality in an urban environment? *Atmospheric Environment*. 2015;120:173-181.
43. McDonald A, Bealey W, Fowler D, Dragosits U, Skiba U, Smith R, Donovan R, Brett H, Hewitt C and Nemitz E. Quantifying the effect of urban tree planting on concentrations and depositions of PM 10 in two UK conurbations. *Atmospheric Environment*. 2007;41:8455-8467.
44. Nowak DJ. Institutionalizing urban forestry as a “biotechnology” to improve environmental quality. *Urban Forestry & Urban Greening*. 2006;5:93-100.
45. Nowak DJ, Crane DE and Stevens JC. Air pollution removal by urban trees and shrubs in the United States. *Urban forestry & urban greening*. 2006;4:115-123.
46. Nowak DJ, Hirabayashi S, Bodine A and Hoehn R. Modeled PM 2.5 removal by trees in ten US cities and associated health effects. *Environmental Pollution*. 2013;178:395-402.
47. Setälä H, Viippola V, Rantalainen A-L, Pennanen A and Yli-Pelkonen V. Does urban vegetation mitigate air pollution in northern conditions? *Environmental Pollution*. 2013;183:104-112.
48. Speak A, Rothwell J, Lindley S and Smith C. Urban particulate pollution reduction by four species of green roof vegetation in a UK city. *Atmospheric Environment*. 2012;61:283-293.
49. Handley MA, Lyles CR, McCulloch C and Cattamanchi A. Selecting and Improving Quasi-Experimental Designs in Effectiveness and Implementation Research. *Annu Rev Public Health*. 2018;39:5-25.
50. Hellebaut A, Boisson S and Mahy G. Do plant traits help to design green walls for urban air pollution control? A short review of scientific evidences and knowledge gaps. *Environ Sci Pollut Res Int*. 2022;29:81210-81221.
51. Corada K, Woodward H, Alaraj H, Collins CM and de Nazelle A. A systematic review of the leaf traits considered to contribute to removal of airborne particulate matter pollution in urban areas. *Environ Pollut*. 2021;269:116104.



52. Gaglio M, Pace R, Muresan AN, Grote R, Castaldelli G, Calfapietra C and Fano EA. Species-specific efficiency in PM(2.5) removal by urban trees: From leaf measurements to improved modeling estimates. *Sci Total Environ*. 2022;844:157131.
53. Wu J, Wang Y, Qiu S and Peng J. Using the modified i-Tree Eco model to quantify air pollution removal by urban vegetation. *Sci Total Environ*. 2019;688:673-683.
54. Jeong NR, Han SW and Ko B. Effects of Green Network Management of Urban Street Trees on Airborne Particulate Matter (PM(2.5)) Concentration. *Int J Environ Res Public Health*. 2023;20.
55. Cohen S, Kamarck T and Mermelstein R. A global measure of perceived stress. *J Health Soc Behav*. 1983;24:385-96.
56. Tennant R, Hiller L, Fishwick R, Platt S, Joseph S, Weich S, Parkinson J, Secker J and Stewart-Brown S. The Warwick-Edinburgh Mental Well-being Scale (WEMWBS): development and UK validation. *Health Qual Life Outcomes*. 2007;5:63.
57. Cagney KA, Glass TA, Skarupski KA, Barnes LL, Schwartz BS and Mendes de Leon CF. Neighborhood-level cohesion and disorder: measurement and validation in two older adult urban populations. *J Gerontol B Psychol Sci Soc Sci*. 2009;64:415-24.
58. Pope CA, Bhatnagar A, McCracken J, Abplanalp WT, Conklin DJ and O'Toole TE. Exposure to Fine Particulate Air Pollution Is Associated with Endothelial Injury and Systemic Inflammation. *Circ Res*. 2016.
59. DeJarnett N, Conklin DJ, Riggs DW, Myers JA, O'Toole TE, Hamzeh I, Wagner S, Chugh A, Ramos KS, Srivastava S, Higdon D, Tollerud DJ, DeFilippis A, Becher C, Wyatt B, McCracken J, Abplanalp W, Rai SN, Ciszewski T, Xie Z, Yeager R, Prabhu SD and Bhatnagar A. Acrolein exposure is associated with increased cardiovascular disease risk. *J Am Heart Assoc*. 2014;3.
60. Cohen S, Kamarck T and Mermelstein R. A global measure of perceived stress. *Journal of health and social behavior*. 1983:385-396.
61. Tennant R, Hiller L, Fishwick R, Platt S, Joseph S, Weich S, Parkinson J, Secker J and Stewart-Brown S. The Warwick-Edinburgh mental well-being scale (WEMWBS): development and UK validation. *Health and Quality of life Outcomes*. 2007;5:1.
62. Cagney KA, Glass TA, Skarupski KA, Barnes LL, Schwartz BS and de Leon CFM. Neighborhood-level cohesion and disorder: measurement and validation in two older adult urban populations. *The Journals of Gerontology Series B: Psychological Sciences and Social Sciences*. 2009;64:415-424.
63. Steudte-Schmiedgen S, Wichmann S, Stalder T, Hilbert K, Muehlhan M, Lueken U and Beesdo-Baum K. Hair cortisol concentrations and cortisol stress reactivity in generalized anxiety disorder, major depression and their comorbidity. *J Psychiatr Res*. 2017;84:184-190.
64. Wikenius E, Moe V, Kjellevoid M, Smith L, Lyle R, Waagbo R, Page CM and Myhre AM. The Association between Hair Cortisol and Self-Reported Symptoms of Depression in Pregnant Women. *PLoS One*. 2016;11:e0161804.
65. Wilkinson IB, Fuchs SA, Jansen IM, Spratt JC, Murray GD, Cockcroft JR and Webb DJ. Reproducibility of pulse wave velocity and augmentation index measured by pulse wave analysis. *J Hypertens*. 1998;16:2079-84.
66. Crilly M, Coch C, Bruce M, Clark H and Williams D. Indices of cardiovascular function derived from peripheral pulse wave analysis using radial applanation tonometry: a measurement repeatability study. *Vasc Med*. 2007;12:189-97.

67. Crilly M, Coch C, Bruce M, Clark H and Williams D. Repeatability of central aortic blood pressures measured non-invasively using radial artery applanation tonometry and peripheral pulse wave analysis. *Blood Press*. 2007;16:262-9.
68. Townsend RR, Wilkinson IB, Schiffrin EL, Avolio AP, Chirinos JA, Cockcroft JR, Heffernan KS, Lakatta EG, McEniery CM, Mitchell GF, Najjar SS, Nichols WW, Urbina EM, Weber T and American Heart Association Council on H. Recommendations for Improving and Standardizing Vascular Research on Arterial Stiffness: A Scientific Statement From the American Heart Association. *Hypertension*. 2015;66:698-722.
69. Zanolli L, Lentini P, Granata A, Gaudio A, Fatuzzo P, Serafino L, Rastelli S, Fiore V, D'Anca A, Signorelli SS and Castellino P. A systematic review of arterial stiffness, wave reflection and air pollution. *Mol Med Rep*. 2017.
70. Riggs DW, Yeager R, Conklin DJ, DeJarnett N, Keith RJ, DeFilippis AP, Rai SN and Bhatnagar A. Residential proximity to greenness mitigates the hemodynamic effects of ambient air pollution. *Am J Physiol Heart Circ Physiol*. 2021;320:H1102-H1111.
71. Cohen J. *Statistical Power Analysis for the Behavioral Sciences*. 2nd edn. Hillsdale, New Jersey: L. 1988.
72. Hsieh FY, Bloch DA and Larsen MD. A simple method of sample size calculation for linear and logistic regression. *Statistics in medicine*. 1998;17:1623-1634.
73. Bhatnagar A, Bolli R, Johnstone BH, Traverse JH, Henry TD, Pepine CJ, Willerson JT, Perin EC, Ellis SG, Zhao DX, Yang PC, Cooke JP, Schutt RC, Trachtenberg BH, Orozco A, Resende M, Ebert RF, Sayre SL, Simari RD, Moye L, Cogle CR, Taylor DA and Cardiovascular Cell Therapy Research N. Bone marrow cell characteristics associated with patient profile and cardiac performance outcomes in the LateTIME-Cardiovascular Cell Therapy Research Network (CCTRN) trial. *Am Heart J*. 2016;179:142-50.
74. Taylor DA, Perin EC, Willerson JT, Zierold C, Resende M, Carlson M, Nestor B, Wise E, Orozco A, Pepine CJ, Henry TD, Ellis SG, Zhao DX, Traverse JH, Cooke JP, Schutt RC, Bhatnagar A, Grant MB, Lai D, Johnstone BH, Sayre SL, Moye L, Ebert RF, Bolli R, Simari RD, Cogle CR and Cardiovascular Cell Therapy Research N. Identification of Bone Marrow Cell Subpopulations Associated With Improved Functional Outcomes in Patients With Chronic Left Ventricular Dysfunction: An Embedded Cohort Evaluation of the FOCUS-CCTRN Trial. *Cell Transplant*. 2016;25:1675-1687.
75. Center A. PHQ-9 depression scale. *University of Washington, Psychiatry & Behavioral Sciences Division of Population Health*. 2017.
76. Leslie E, Sugiyama T, Ierodiaconou D and Kremer P. Perceived and objectively measured greenness of neighbourhoods: Are they measuring the same thing? *Landscape and urban planning*. 2010;95:28-33.