

1 Socioeconomic Status and Depression –

2 A Systematic Review

3

4 Anders Jespersen, Rebecca Madden, Heather C. Whalley, Rebecca Reynolds, Stephen M.

5 Lawrie, Andrew M. McIntosh, Matthew Iveson

6

7

8 **Abstract**

9 **Objective** Low socioeconomic status (SES) has been associated with an increased risk of
10 depression and psychiatric disorders in general. In this systematic review and meta-analysis,
11 we aim to provide an estimate of the risk of clinical depression associated with low SES
12 across cultures, age groups and study designs. Finally, we tested whether associations
13 between SES and depression differed by the income of the country in which the study was
14 conducted.

15

16 **Methods** A literature search across five databases returned 7,943 studies. Title, abstract and
17 full text screening resulted in 162 included studies of which 122 were meta-analysed, 22 were
18 included in a cross-sectional narrative review and 19 studies were included in a longitudinal
19 narrative review. Meta-analyses were divided into risk estimates for composite SES, income,
20 education, and employment. Sensitivity analyses based on differences in economic situation
21 in the country of study origin were performed to investigate a possible source of between
22 study heterogeneity.

23

24 **Results** Low SES was associated with an increased risk of depression across all measures of
25 SES. Low income was associated with the highest odds ratio for depression (OR = 1.96, 95%
26 CI = 1.53-2.52). Sensitivity analyses revealed no significant differences in between-study
27 heterogeneity or risk of depression between high- and low-income economy groups.

28

29 **Conclusions** Comparable risks of depression across economy groups suggest that income
30 relative to your peers, rather than absolute income, is a risk factor for depression.
31 Preventative measures and possible policy interventions are discussed.

32

33 **Strengths and limitations of this study**

- 34 • This systematic review provides the largest and most comprehensive review and
35 meta-analysis of the association between socioeconomic status and depression.
- 36 • The included studies span a broad range of ages, cultures, and country economies,
37 allowing for better generalisation of the results.
- 38 • The inclusion of component parts of socioeconomic status (income, education, and
39 employment) in the meta-analysis allows for comparisons of the different risk
40 estimates.
- 41 • The broad inclusion criteria are likely to allow for increased between-study
42 heterogeneity.
- 43 • Due to the observational nature of the studies included it is difficult to make
44 conclusions on the direction of causality between socioeconomic status and
45 depression. However, the inclusion of a longitudinal narrative review may give an
46 indication of a direction of causality.

47

48

49 **Introduction**

50

51 Depression is a leading cause of disability world-wide, affecting over 322 million people
52 (WHO 2017). Depression is associated with an elevated mortality risk (Gilman et al., 2017)
53 due, in part, to an increased risk of suicide in depressed people (Bachmann 2018), and to a
54 number of common life-shortening comorbidities (Walker et al 2018.). While there is a
55 significant genetic contribution to the risk of developing depression (Sullivan et al 2000)
56 there is evidence that environmental risk factors, amongst them poverty, deprivation, and low
57 socioeconomic status, are likely to confer an increased risk of depression.

58

59 Socioeconomic status (SES) refers to a composite level of income, education and
60 occupation, where lower SES reflects overall material and social deprivation. Lower SES has
61 previously been associated with an increased risk of developing depression (Lorant et al.,
62 2003) and is one of the strongest predictors of overall poor mental and physical health
63 (Everson et al., 2002). Low SES is also a risk factor for many of the chronic diseases
64 associated with or comorbid with depression (Hosseinpoor et al., 2012; Robbins et al., 2005).
65 This relationship may be bidirectional as chronic disease can lead to loss of income,
66 unemployment, or interrupted education.

67

68 Many studies of psychiatric disorders in general and depression in particular control
69 for SES when investigating the effects of other risk factors of interest. However, this
70 approach minimises the contribution of poverty itself, which may have larger effects on
71 depression than many of the factors being studied. For example, a recent meta-umbrella
72 systematic review (Arango et al. 2022) on modifiable risk factors common to major
73 psychiatric disorders failed to include analysis of any socioeconomic measures.

74

75 While a growing body of research links low SES with poor health, there is a global trend
76 for increasing life expectancy, rising levels of education and fewer people living in poverty
77 (Roser & Ortiz-Ospina, 2016; Roser et al., 2013). However, this trend is not uniform across
78 all countries (World Bank Group 2020; Marmot 2020).

79

80 Given the persistent nature of relationships between low SES and health outcomes, such as
81 increased risk of depression, there is a clear need to quantify the strength of this association.

82 It is also unclear whether the relationship of depression with SES depends upon an
83 individual's absolute socioeconomic position, or on their position relative to that of other
84 individuals in the same country. Previous research on the association between SES and
85 depression have shown evidence of an association in specific cultures and contexts
86 (Richardson et al. 2015), certain age groups (Reiss et al 2013), and sections of society (Lund
87 et al 2010).

88

89 In the present review, we systematically reviewed the existing literature measuring the
90 effects of low SES on risk of depression. We provide an synthesis of studies from countries
91 spanning the spectrum of income economies. We sought to test whether differences in SES
92 were associated with the absolute level of poverty in the nation from which participants were
93 recruited, or if differences in SES were consistent across income settings and therefore
94 indicative of an association with relative rather than absolute social position.

95

96

97 **Methods**

98 **Inclusion and exclusion criteria**

99 Peer-reviewed literature and published PhD theses that examined the association
100 between SES and clinically relevant depression were included. PhD theses were included to
101 mitigate publication bias.

102 Studies involving participants with clinical depression were included if they used any
103 recognised structured diagnostic criteria, whether self-reported, obtained through data
104 linkage, or diagnosed using a diagnostic clinical interview or questionnaire with a clear
105 clinical cut-off. Studies focusing on symptoms and comparisons between subgroups of
106 depression were excluded. Studies with an unclear division between cases and controls i.e.
107 comparing sub groups of depressions, and those with insufficient results to be meta-analysed
108 were also excluded if study authors were not able to provide this information. There were no
109 restrictions on the age, sex, cultural heritage or comorbid diseases of the participants in the
110 present review.

111 Studies that grouped depression with other psychiatric disorders (often anxiety or
112 schizophrenia) in the “case” group and compared it to a “control” group without both the
113 psychiatric disorders present in the “cases” group were excluded. However, there were no
114 restrictions on comorbidities being included in the present systematic review. As a result,
115 studies with participants with more than one psychiatric disorder or health problem were
116 included, as long as the only difference between the cases-group and controls-group was the
117 presence or absence of depression.

118

119 **Search strategy**

120 Literature searches were performed in the following databases: PsycInfo, EMBASE,
121 Medline, Web of Science, ASSIA. The databases were chosen to cover as broad a range of
122 medical and sociological sources as possible.

123 In four out of five databases searches were conducted using subject headings. The
124 following search template was used in PsycInfo, EMBASE. Medline and ASSIA:

125 Depression AND (Socioeconomic status OR Income OR Occupation OR Education).

126 Web of Science does not facilitate subject heading searches. Instead, a keyword
127 search was conducted using the same key words that were used in the subject heading search
128 (Depression ADJACENT (Socioeconomic status OR Income OR Occupation OR Education))
129 ensuring the keywords were within 5 words of each other using the “adjacent” search
130 function.

131 In all databases, filters were applied to exclude reviews, conference abstracts and
132 animal research and to limit the search to English language papers. There were no restrictions
133 on publication date or country of origin of the search results. Studies on perinatal depression,
134 depression subtypes and depressive symptoms were not filtered out. This was done to
135 minimise automatic exclusion of studies meeting inclusion criteria. Instead, studies
136 investigating perinatal depression, depression subtypes and depressive symptoms were
137 excluded during the two screening processes.

138

139 The last date for all searches was 15th of March 2019.

140

141 A protocol for this systematic review and meta-analysis was published on the international

142 prospective register of systematic reviews (PROSPERO). The protocol can be found under

143 the ID: CRD42019129509. The protocol was followed except for a risk of bias assessment. To

144 date there is no universally recognised screening tool for risk of bias for observational studies
145 (Bero et al., 2018) and the most popular tools for observational research have been found to
146 be inconsistent (Losilla et al. 2018). The Newcastle-Ottawa Scale for case control and cohort
147 studies (mentioned in the protocol) has been argued to include invalid items, producing
148 highly arbitrary results (Stang 2010). As a consequence the authors of this review decided not
149 to conduct a formal risk of bias assessment.

150

151 **Data collection**

152 Abstracts and titles were initially screened by one author (AJ). Studies screened that met
153 inclusion criteria but could not be found through online databases were requested through the
154 University of Edinburgh's interlibrary loan services. Assessing interrater reliability is
155 important to ensure that the screening process does not miss any eligible studies and that the
156 screening method is replicable across different assessors. Selection bias can be introduced in
157 the screening processes if an assessor repeatedly includes or excludes studies based on factors
158 other than those listed in the inclusion and exclusion criteria. To assess interrater reliability
159 and selection bias a second author (RM) screened a 10% subsample (N = 795) of abstracts
160 and titles. There was an 89.7% agreement on the outcome of the screening by the two
161 authors. 521 studies were screened against their full text.

162

163 Data collection was done alongside full text screening, and a sample of the data
164 collection sheet can be found in Additional file 1.

165

166 **Analysis**

167 For the meta-analyses the studies were divided into four groups according to how they
168 measured SES: dichotomous, ordinal with three groups, continuous, and longitudinal. The

169 dichotomous study group was made up of all the studies reporting data in a
170 binary/dichotomous format and all the studies reporting results in an ordinal format with 4
171 socioeconomic groups. The latter type of study was dichotomised by merging the top two
172 socioeconomic groups together (high) and the bottom two socioeconomic groups together
173 (low). Dichotomous, studies were meta-analysed separately according to the type of SES
174 indicator used: a composite SES measure, income, education, and employment
175 (unemployment). As a result of meta-analysing each SES indicator separately, some studies
176 appeared in several meta-analyses, because they reported results for more than one indicator.

177 A pooled OR and 95% CI was calculated for each SES indicator using the package
178 ‘meta’ (Balduzzi et al., 2019) in R version 4.0.4. The effects were calculated using a random
179 effects model and the between studies variation was calculated using the Sidik-Jonkman
180 estimator (IntHout et al., 2014). RRs and ORs were meta-analysed together as they are
181 statistically comparable when the prevalence is low.

182

183 Data files and code can be accessed at:

184 https://osf.io/dqnp5/?view_only=ca92b1486ab842b4bbf8c20f9ea4e4c2.

185

186 A narrative approach was adopted for papers that could not be meta-analysed due to
187 the design of the study or insufficient reporting of results. Similarly, all longitudinal papers
188 were included in a longitudinal narrative review due to a combination of low number of
189 studies in each of the SES groups and variable follow-up time.

190

191 Significant heterogeneity between studies was anticipated given the large number of
192 studies included and the range of countries, age groups and diagnostic tools reported.

193 Between study heterogeneity was explored using Cochrane’s Q and quantified by an I^2

194 statistic. Both measures were calculated using the ‘meta’ package in R. To explore possible
195 reasons for between-study effect size heterogeneity, sensitivity analyses based on the
196 economic situation in the country of origin were performed. The World Bank country and
197 lending group classifications were used to divide countries into low- and high-income
198 economy subgroups. A sensitivity analysis was carried out for each measure-specific meta-
199 analysis on dichotomised data to compare ORs and CIs and heterogeneity measures between
200 high- and low-income economy subgroups. We hypothesised that estimates of depression risk
201 associated with SES indicators would be similar across low- to high-income economies,
202 consistent with the importance of relative position within a country, rather than absolute
203 differences.

204

205

206 **Results**

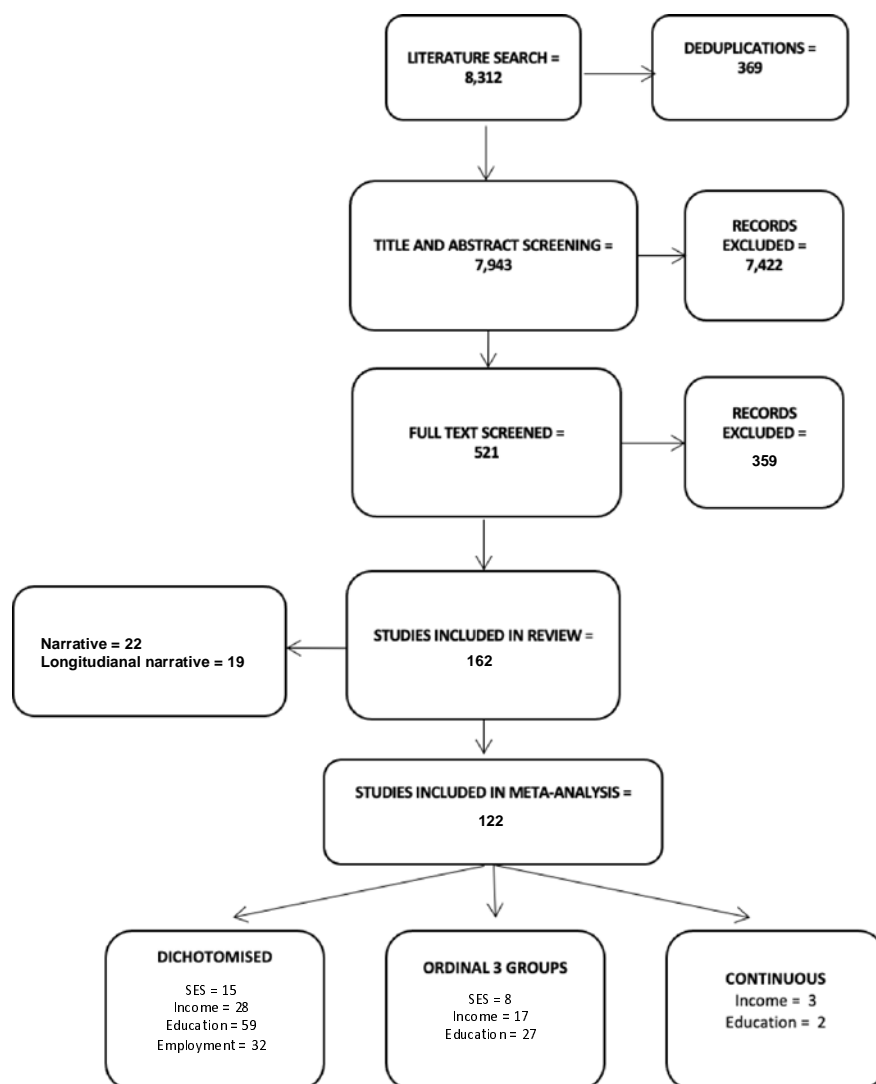
207

208 **Study inclusion**

209 The literature search returned 8,312 studies, 369 of which were duplications. During
210 title and abstract screening of the 7,943 remaining studies, 7,422 were excluded. The
211 remaining 521 studies were full text screened, leading to another 359 papers being excluded.
212 A breakdown of the reason for exclusions can be seen in Additional file 2.

213 As a result, 162 studies were included in the systematic review and meta-analysis.

214 Figure 1 shows a flow-chart with the number of studies excluded at each step and the number
215 of included studies in each of the meta-analyses.



216

217

218 *Figure 1: Flowchart of the number of included and excluded studies. Studies in the “Dichotomised” bin reported data in 2*
219 *groups (e.g. high vs. low income), studies in the “ordinal 3 groups” bin reported data in 3 groups (e.g. low, medium, and*
220 *high educational attainment), and studies in the “continuous” bin reported continuous results (e.g. median income for*
221 *depressed people).*

222

223

224 **Missing data and contact with authors**

225 A total of 17 studies reported insufficient data (only worded or graphed results,
226 inconsistencies in reported numbers, no reporting of cut-off, etc.) to include the study in one
227 of the meta-analyses or one of the narrative reviews. Authors of 15 out of the 17 studies were
228 contacted for data or clarification. Author contact details for 1 study could not be found and
229 another had since deceased. Out of the 15 authors that were contacted, 7 replied, and 1
230 provided supplementary data enabling the study to be included in the meta-analysis.

231

232 **Study population**

233 The total number of participants in the 162 studies was 329,005 of which 48,158
234 presented with depression. The resulting overall prevalence is 14.6%. The participants were
235 recruited from 47 countries across 6 continents.

236 Of the studies included in the meta-analysis, 63 were from high income countries, 30
237 from higher middle-income economies, 11 from lower middle-income economies and finally
238 10 from low-income economies.

239 In 56 of the studies reporting statistics on their participants age, participants were over
240 18 and had a mean age below 50. Participants had a mean age of over 50 in 31 of the studies.
241 Children were included as participants in 10 of the studies.

242 Finally, of the studies included in the meta-analysis 72 of them recruited participants
243 from a community setting while 39 of them recruited from a clinical setting.

244

245

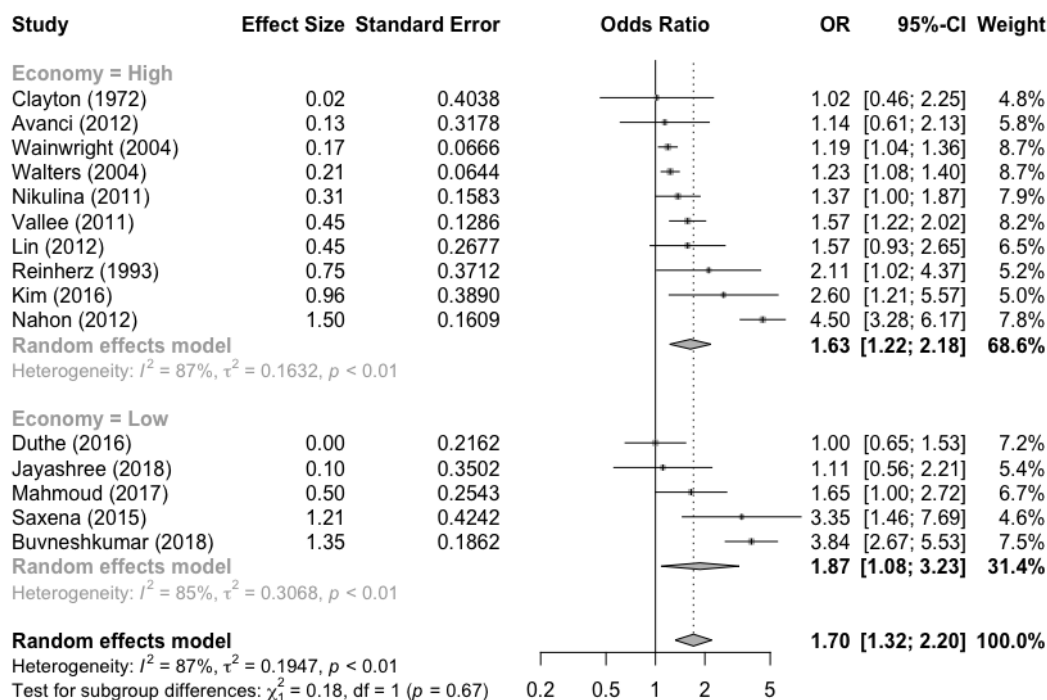
246 **Dichotomised meta-analyses**

247 **Socioeconomic status**

248 Results from the 15 studies included in the dichotomised meta-analysis of the
 249 association between composite SES measures and depression can be seen in Figure 2. The
 250 pooled OR for composite SES and depression was 1.70 (95% CI = 1.32-2.20), representing a
 251 70% increase in the odds of depression among individuals of low SES compared to high SES.
 252 A sensitivity analysis showed no significant differences in the estimates of risk between high-
 253 and low-income economy subgroups (df = 1, p = 0.67)

254 The between-study heterogeneity was estimated at $I^2 = 87%$ (with a variance of τ^2
 255 0.19). Cochran's Q was estimated at 105 (p < 0.001).

256



257

258 *Figure 2: Forrest plot of ORs and CIs of depression risk in people with low SES, from dichotomised data. (e.g. high vs. low*

259 *SES). Results are shown for each individual study, a pooled estimate for high- and low-income economy subgroups, and*

260 *pooled estimate for all included studies.*

261

262

263 **Income**

264 Results from the dichotomised meta-analysis of the association between income and

265 depression, including data from 28 studies, can be seen in figure 3. In the pooled estimate,

266 individuals on a low income had a 96% increase in odds of having depression compared to

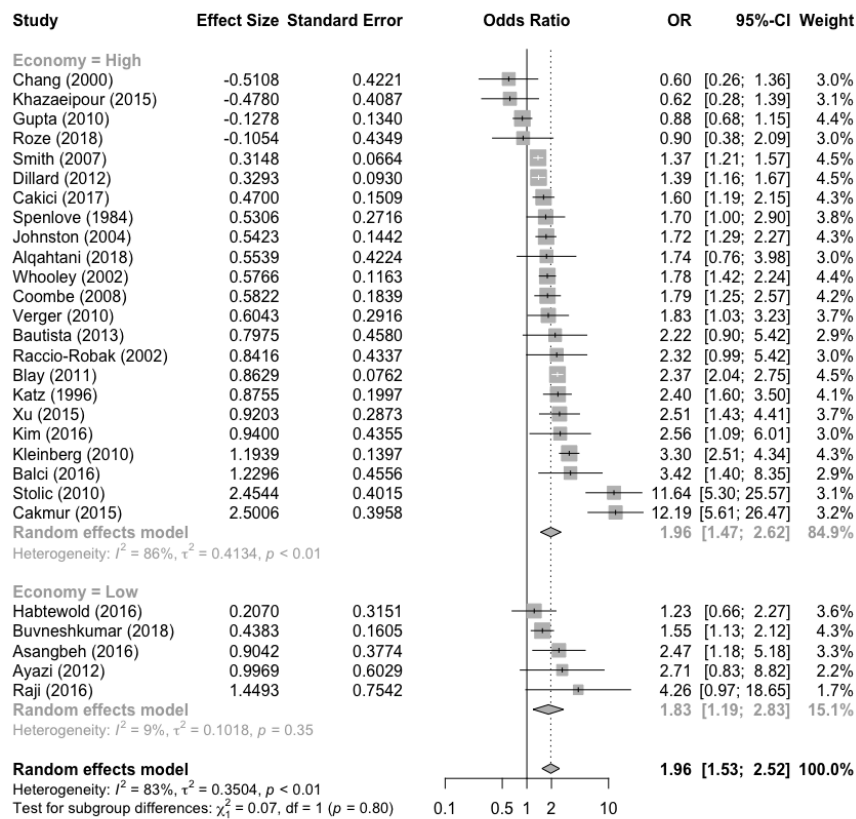
267 individuals on a high income (OR = 1.96, 95% CI = 1.52-2.53). A sensitivity analysis showed

268 no significant differences in the estimates of risk between high- and low-income economy

269 subgroups (df = 1, p = 0.80). The between-study heterogeneity was estimated at $I^2 = 83%$

270 (with a variance of $\tau^2 = 0.35$). Cochran's Q was estimated at 156 (p < 0.001).

271



272

273 *Figure 3: Forrest plot of ORs and CIs of depression risk in people with low vs high income, from dichotomised data. Results*
274 *are shown for each individual study, a pooled estimate for high- and low-income economy subgroups, and pooled estimate*
275 *for all included studies.*

276

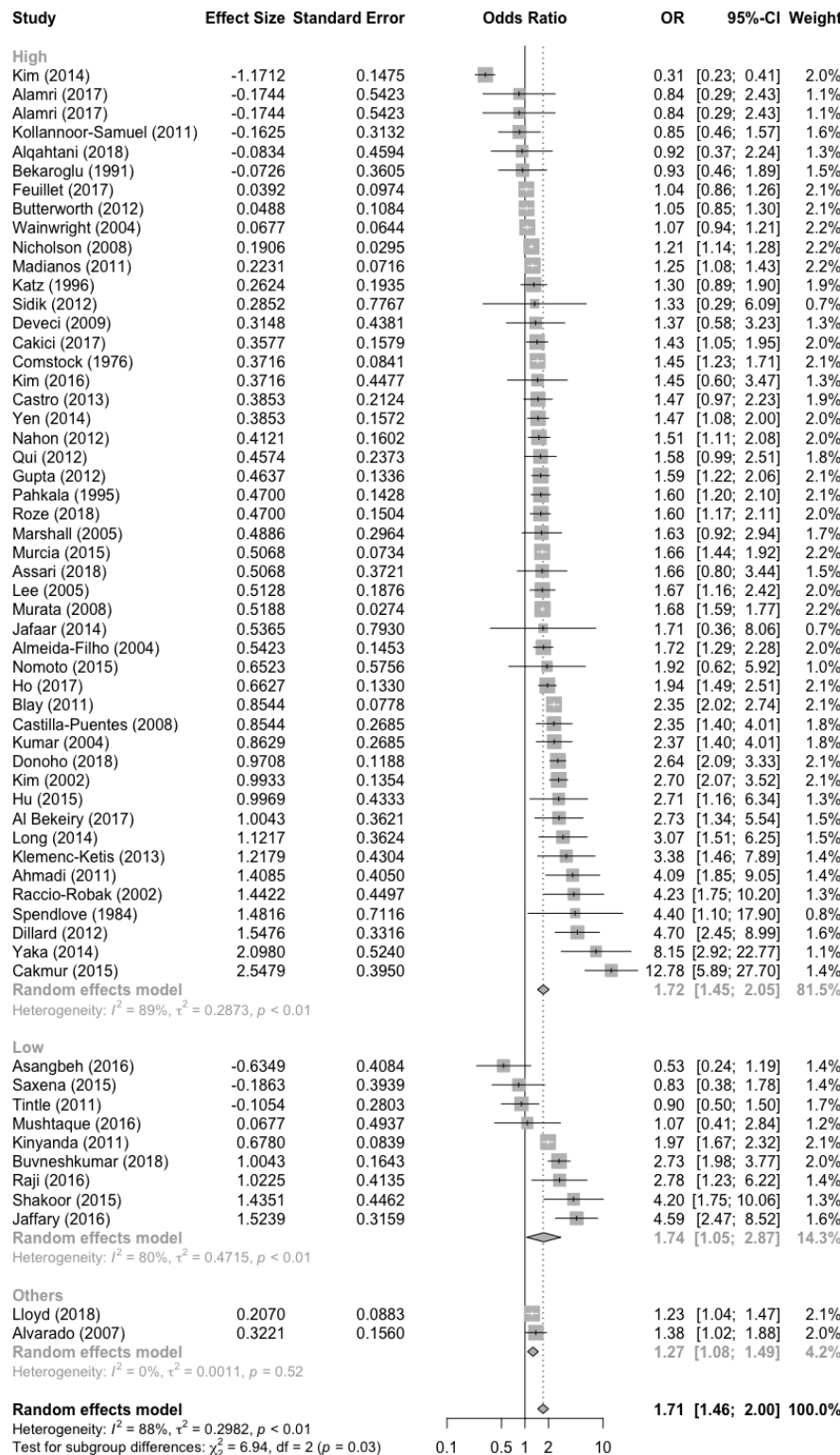
277

278 **Educational attainment**

279 The results from the dichotomised meta-analyses of association between educational
280 attainment and depression, including 59 studies, can be seen in figure 4.

281 In the pooled estimate, people with a lower educational attainment had a 69% higher
282 risk of depression compared to people with a higher educational attainment (OR = 1.71, 95%
283 CI = 1.46-2.00). The between-study heterogeneity was estimated at $I^2 = 88\%$ (with a variance
284 of τ^2 0.29). Cochrane's Q was estimated at 465 ($p < 0.001$). Note that two included studies
285 reported education-depression associations in multiple countries, including both high- and
286 low-income economy countries. When these studies were included as a separate subgroup,
287 there was a significant difference between risk estimates of the three economy subgroups (df
288 = 3, $p = 0.03$), with the pooled estimate for this third subgroup demonstrating relatively weak
289 associations between low educational attainment and increased depression risk. However,
290 without the third subgroup, there was no significant difference between risk estimates of the
291 high- and low-income economy subgroups ($df = 1$, $p = 0.90$).

292



293

294 *Figure 4: Forrest plot of ORs and CIs of depression risk in people with low educational attainment, from dichotomised data.*

295 *Results are shown for each individual study, a pooled estimate for high- and low-income economy subgroups, a pooled*

296 *estimate for studies that could not be placed in either high- and low-income economy subgroup (“others”), and pooled*
297 *estimate for all included studies.*

298

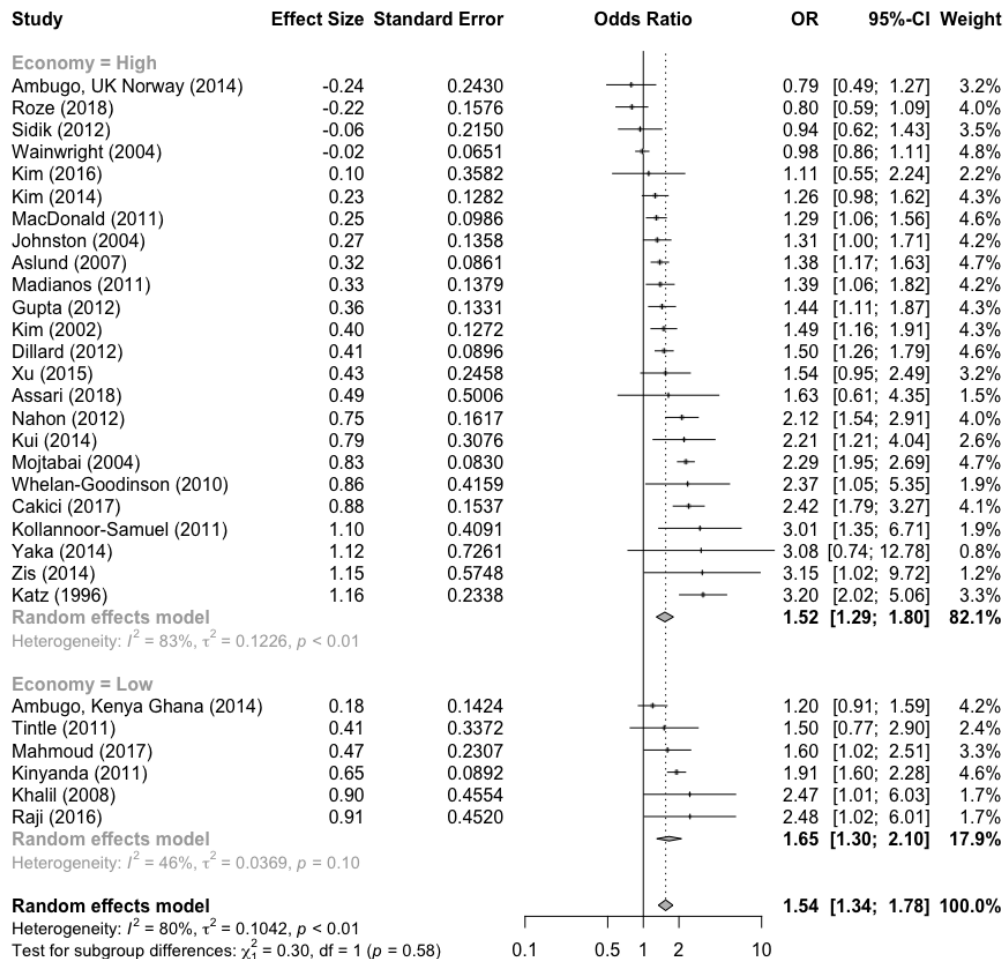
299

300 **Employment**

301 The dichotomised meta-analysis on the association between employment (or
302 unemployment) and depression, including results from 29 studies, can be seen in figure 5.

303 The pooled estimate indicated that people who were unemployed had a 57% higher
304 risk of experiencing depression. The between study heterogeneity was estimated at $I^2 = 81\%$
305 (with a variance of $\tau^2 = 0.09$). Cochranes Q was estimated at 138 ($p < 0.001$). There was no
306 significant difference between the risk estimates for low-income economies and high-income
307 economies ($df = 1, p = 0.58$).

308



309

310 *Figure 5: Forrest plot of ORs and CIs of depression risk in people with unemployment, from dichotomised data. Results are*
 311 *shown for each individual study, a pooled estimate for high- and low-income economy subgroups, and pooled estimate for*
 312 *all included studies.*

313 Forest plots of the ordinal and continuous meta-analyses can be found in Additional file 3,
 314 tables of narrative and longitudinal narrative reviews, can be found in Additional file 4.

315

316

317

318

319

320

321 **Discussion**

322 In all but one of the nine separate meta-analyses a consistent association was found
323 between low SES and increased risk of depression. These results were synthesised from 138
324 studies spanning almost five decades of research, 47 countries across six continents, covering
325 the whole human life span, and including 34 different comorbid diseases.

326

327 **Main findings**

328 Low composite SES, income, and educational attainment were all significantly
329 associated with an increased risk of depression in 8 out of 9 meta-analyses. Unemployment
330 was also associated with higher risk of depression. Of the 19 eligible longitudinal studies
331 identified, 15 reported a significant relationship between low SES and higher risk of
332 depression and 7 studies reported a null association. The majority of null associations were
333 reported between educational attainment and depression risk. None of the studies reported a
334 significant relationship between high SES and an increased risk of depression. Overall, the
335 findings from the longitudinal studies and the cross-sectional studies are congruent; most
336 studies report a significant association between low SES and increased risk of depression.
337 Among all 162 reviewed studies, only three (Kim et al. 2014; Kui et al. 2014; Bekaroglu et
338 al. 1991) found a reverse relationship, i.e. low SES being associated with a decreased risk of
339 depression.

340

341 The meta-analyses of dichotomised data revealed an increased risk of depression
342 associated with low SES in each of the measures (composite SES, income, education, and
343 unemployment). SES is a composite measure made up of components either directly or
344 indirectly related to income, education, and employment. It is perhaps not surprising that each
345 measure of SES showed a similar direction of association with depression, given these

346 measures are related. Income, education, and employment are, to varying degrees,
347 intercorrelated whilst also each accounting for a proportion of unique variance. For example,
348 having a high level of education makes it more likely to obtain a high income, whilst having a
349 high income makes it easier to retrain or pursue a higher level of education. Having any
350 income at all often relies on being employed, although this does differ from country to
351 country depending on the degree of economic support provided. However, these relationships
352 are far from fixed and many societal and individual factors influence the strength of the
353 relationships between components of SES. When partitioning the risk of depression
354 associated with SES into component risk factors it is important to remember that these
355 components are correlated with one another.

356 In the present systematic review low income showed the largest magnitude of
357 association with depression (OR = 1.96, 1.53-2.52) than other SES measures. The meta-
358 analyses of studies dividing SES into three groups further supported this finding.
359 Furthermore, there was evidence of a dose dependent pattern, with higher depression risk in
360 medium versus high income groups and low versus across medium income groups (see
361 Additional file 3). Sensitivity analysis showed no significant difference in the risk estimates
362 between high-income economies and low-income economies, suggesting a cross-culturally
363 stable association between low relative income and higher depression risk. A recent review
364 demonstrated an increased risk of depression in populations with higher income inequality
365 (Patel et al. 2018) which was not replicated in this review.

366 The direction of the effect is unclear from the reviewed studies. However, six out of
367 eight longitudinal studies reported an increased risk of depression following a period of low
368 income (two reported no significant association), suggesting the direction of causation may
369 be from low income to increased risk of depression. The reason behind the strength
370 difference in risk estimates between the SES measures, particularly the much stronger

371 association for low income, is also unclear. It is possible that low income, or poverty, is
372 particularly restrictive in terms of direct and indirect health promoting behaviours and
373 particularly impactful for psychological stress. It is also possible that income has a more
374 direct effect on depression risk as it is often the knock-on effect of other SES measures.

375 This finding could be important for informing policy intervention attempts. Of all the
376 SES measures, income may be the easiest immediate factor to change. Changing someone's
377 educational attainment or employment status takes a long time and is difficult, involving
378 changes to the structure of the education system and labour market through macro-economic
379 measures. Preparing an individual for higher educational attainment or a more favourable
380 position within an existing labour market may entail removing impediments based on poor
381 health and carer commitments.

382 An increasingly appealing intervention against poverty (and low SES) is universal
383 basic income (UBI) (Arnold, 2018). At its core UBI means giving a regular amount of money
384 to an individual without any obligations or commitments necessary. Smaller trials of this
385 intervention have had positive effects on health, wellbeing and SES (Enns et al., 2021;
386 Forget, 2011; Koistinen & Perkiö, 2014). Many of these interventions are relatively short-
387 lived, leaving conclusions on the long-term impact vague. However, larger, and longer
388 interventions are underway in Kenya and the United States, lasting up to 12 years.

389 Studies on the association between SES and depression are often of an observational
390 nature and as such are prone to biases. However, using these observational studies to inform
391 the design of interventional experimental studies could be a methodologically strong
392 approach. Given the present systematic review found the highest risk of depression to be
393 associated with low income, UBI may present a preventative opportunity in an intervention
394 based experimental set-up.

395

396

397 **Strengths and limitations**

398 The main limitation of the present systematic review is the high levels of
399 heterogeneity in the meta-analyses, which may in-turn reflect differences in study
400 populations, methods or other factors (e.g., cohort effects where the association effect size
401 changes over decades). The analyses involving dichotomous data all have heterogeneity
402 estimates (I^2) between 81% and 89%. Sensitivity analyses were performed on each of the
403 meta-analyses to investigate if differences in countries' economies could explain the high-
404 level of heterogeneity. None of the meta-analyses differed significantly in risk estimates
405 between low-income economies and high-income economies. The sensitivity analyses of
406 income and unemployment revealed that most of the heterogeneity were in studies from high-
407 income economies. However, for both meta-analyses there were four times as many studies
408 in the high-income economy group which may be behind the difference in between-study
409 heterogeneity.

410 A good example of why the heterogeneity may not stem from differences in cultures
411 can be found in one of the studies included in this review; Ambugo et al (2014). The study
412 compares SES and depression associations in four countries (Ghana, Kenya, UK, and
413 Norway) spanning low- and high-income economies, but crucially all with a similar design.
414 The risk estimates were similar and a meta-analysis of the effects reveals relatively little
415 heterogeneity ($I^2 = 50.9$, $Q = 6.11$).

416 The high levels of between study heterogeneity could instead be due to variation in
417 depression diagnosis screening tools, recruitment settings, and differences in covariate
418 inclusion across studies.

419 Finally, due to the observational nature of the data it is difficult to confidently infer
420 causality even when including longitudinal data. In the case of investigating the association

421 between a complex disease, such as depression, and a complex phenotype such as SES this is
422 even more pronounced.

423

424 The strengths of the present systematic review are its cross cultural, cross age-group,
425 and cross morbidity estimates of the association between SES and depression, as well as
426 providing risk estimates modelled on the largest evidence base to date.

427 Furthermore, the present meta-analyses are unlikely to be hindered by publication
428 bias, and as a consequence less likely to over-estimate the real risk of depression associated
429 with SES. For many of the included studies, the association between SES and depression
430 was not their primary outcome; this may also explain why a number of studies reported null
431 findings.

432 Finally, the inclusion of all measures of SES, whether composite or single indicator
433 measures, gives an opportunity to compare the risk of depression across subparts of SES.
434 This, in turn, lays the groundwork for future research to pinpoint which part of an
435 individual's SES confers the highest risk of depression.

436

437 **Future work**

438 Future research should strive to elucidate the direction of causality in the SES-
439 depression association. This could be obtained using cross generation longitudinal population
440 cohort studies, such as Avon Longitudinal Study of Parent and Children with data on several
441 generations of participants.

442 Another tool for examining causal directions is Mendelian Randomisation (MR),
443 which takes advantage of genetic variants as instrumental variables that are associated with
444 the independent variable (e.g., SES) but not directly with the dependent variable (e.g.,
445 depression risk). Previous MR studies into the association between low SES and depression

446 found a significant association between the two factors but did not find a robust indication of
447 causal direction (Harrison et al., 2020). Future MR studies would benefit from stronger
448 genetic instrumental variables and should investigate the possibility of a bidirectional
449 relationship between low SES and depression.

450 A better understanding of genetic risk of depression and the genetic make-up of SES,
451 will also provide the opportunity to tease apart the social or environmental part of SES that
452 confers risk of depression from the genetic part. This information could aid in pinpointing
453 areas of maximum impact for interventions or even help guide research into preventative
454 treatments of depression.

455

456 **References**

457 Arnold, C. (2018). Money for nothing: the truth about universal basic income. *Nature*,
458 557(7707), 626–628. <https://doi.org/10.1038/d41586-018-05259-x>

459 Balduzzi, S., Rücker, G., & Schwarzer, G. (2019). How to perform a meta-analysis with R: a
460 practical tutorial. *Evidence-Based Mental Health*, 22(4), 153–160.
461 <https://doi.org/10.1136/ebmental-2019-300117>

462 Enns, J. E., Nickel, N. C., Chartier, M., Chateau, D., Campbell, R., Phillips-Beck, W., Sarkar,
463 J., Burland, E., Katz, A., Santos, R., & Brownell, M. (2021). An unconditional prenatal
464 income supplement is associated with improved birth and early childhood outcomes among
465 First Nations children in Manitoba, Canada: a population-based cohort study. *BMC*
466 *Pregnancy and Childbirth*, 21(1), 312. <https://doi.org/10.1186/s12884-021-03782-w>

467 Everson, S. A., Maty, S. C., Lynch, J. W., & Kaplan, G. A. (2002). Epidemiologic evidence
468 for the relation between socioeconomic status and depression, obesity, and diabetes.

- 469 *Journal of Psychosomatic Research*, 53(4), 891–895. <https://doi.org/10.1016/s0022->
470 3999(02)00303-3
- 471 Forget, E. L. (2011). The Town with No Poverty: The Health Effects of a Canadian
472 Guaranteed Annual Income Field Experiment. *Canadian Public Policy*, 37(3), 283–305.
473 <https://doi.org/10.3138/cpp.37.3.283>
- 474 Gilman, S. E., Sucha, E., Kingsbury, M., Horton, N. J., Murphy, J. M., & Colman, I. (2017).
475 Depression and mortality in a longitudinal study: 1952-2011. *Canadian Medical*
476 *Association Journal*, 189(42), E1304–E1310. <https://doi.org/10.1503/cmaj.170125>
- 477 Harrison, S., Davies, A. R., Dickson, M., Tyrrell, J., Green, M. J., Katikireddi, S. V.,
478 Campbell, D., Munafò, M., Dixon, P., Jones, H. E., Rice, F., Davies, N. M., & Howe, L. D.
479 (2020). The causal effects of health conditions and risk factors on social and
480 socioeconomic outcomes: Mendelian randomization in UK Biobank. *International Journal*
481 *of Epidemiology*, 49(5), 1661–1681. <https://doi.org/10.1093/ije/dyaa114>
- 482 Hosseinpoor, A. R., Bergen, N., Mendis, S., Harper, S., Verdes, E., Kunst, A., & Chatterji, S.
483 (2012). Socioeconomic inequality in the prevalence of noncommunicable diseases in low-
484 and middle-income countries: results from the World Health Survey. *BMC Public Health*,
485 12, 474. <https://doi.org/10.1186/1471-2458-12-474>
- 486 IntHout, J., Ioannidis, J. P. A., & Borm, G. F. (2014). The Hartung-Knapp-Sidik-Jonkman
487 method for random effects meta-analysis is straightforward and considerably outperforms
488 the standard DerSimonian-Laird method. *BMC Medical Research Methodology*, 14, 25.
489 <https://doi.org/10.1186/1471-2288-14-25>

- 490 Koistinen, P., & Perkiö, J. (2014). Good and bad times of social innovations: the case of
491 universal basic income in finland. *Basic Income Studies*, 9(1–2).
492 <https://doi.org/10.1515/bis-2014-0009>
- 493 Lorant, V., Deliège, D., Eaton, W., Robert, A., Philippot, P., & Anseau, M. (2003).
494 Socioeconomic inequalities in depression: a meta-analysis. *American Journal of*
495 *Epidemiology*, 157(2), 98–112. <https://doi.org/10.1093/aje/kwf182>
- 496 Robbins, J. M., Vaccarino, V., Zhang, H., & Kasl, S. V. (2005). Socioeconomic status and
497 diagnosed diabetes incidence. *Diabetes Research and Clinical Practice*, 68(3), 230–236.
498 <https://doi.org/10.1016/j.diabres.2004.09.007>
- 499 Roser, M., Ortiz-Ospina, E., & Ritchie, H. (2013). Life Expectancy - Our World in Data. *Our*
500 *World in Data*.
- 501 Roser, M., & Ortiz-Ospina, E. (2016). Global Education - Our World in Data. *Our World in*
502 *Data*.
- 503
- 504

505 **References - Included studies**

- 506 Adewuya, A. O., Ola, B. A., Ajayi, O. E., Oyedeji, A. O., Balogun, M. O., & Mosaku,
507 S. K. (2006). Prevalence and correlates of major depressive disorder in Nigerian outpatients
508 with heart failure. *Psychosomatics*, 47(6), 479–485.
- 509
- 510 Ahmadi, H., Montaser-Kouhsari, L., Nowroozi, M. R., & Bazargan-Hejazi, S. (2011). Male
511 infertility and depression: a neglected problem in the Middle East. *The Journal of Sexual*
512 *Medicine*, 8(3), 824–830.

513

514 Alamri, S. H., Bari, A. I., & Ali, A. T. (2017). Depression and associated factors in
515 hospitalized elderly: a cross-sectional study in a Saudi teaching hospital. *Annals of Saudi
516 Medicine*, 37(2), 122–129.

517

518 AlBekairy, A., AbuRuz, S., Alsabani, B., Alshehri, A., Aldebasi, T., Alkatheri, A., &
519 Almodaimegh, H. (2017). Exploring Factors Associated with Depression and Anxiety among
520 Hospitalized Patients with Type 2 Diabetes Mellitus. *Medical principles and practice*:
521 international journal of the Kuwait University, Health Science Centre, 26(6), 547–553.

522

523 Almeida, O. P., Draper, B., Pirkis, J., Snowdon, J., Lautenschlager, N. T., Byrne, G., Sim,
524 M., et al. (2012). Anxiety, depression, and comorbid anxiety and depression: risk factors and
525 outcome over two years. *International Psychogeriatrics*, 24(10), 1622–1632.

526

527 Almeida-Filho, N., Lessa, I., Magalhães, L., Araújo, M. J., Aquino, E., James, S. A., &
528 Kawachi, I. (2004). Social inequality and depressive disorders in Bahia, Brazil: interactions
529 of gender, ethnicity, and social class. *Social Science & Medicine*, 59(7), 1339–1353.

530

531 Alonso-Morán, E., Satylganova, A., Orueta, J. F., & Nuño-Solinis, R. (2014). Prevalence of
532 depression in adults with type 2 diabetes in the Basque Country: relationship with glycaemic
533 control and health care costs. *BMC Public Health*, 14, 769.

534

535 Alqahtani, M. S., Alshbriqe, A. A., Awwadh, A. A., Alyami, T. A., Alshomrani, M. S., &
536 Alhazzani, A. (2018). Prevalence and Risk Factors for Depression among Caregivers of

537 Alzheimer's Disease Patients in Saudi Arabia. *Neurology research international*, 2018,
538 2501835.

539

540 Altino, D. M., Nogueira-Martins, L. A., de Barros, A. L. B. L., & Lopes, J. de L. (2017).
541 Predictive Factors of Anxiety and Depression in Patients with Acute Coronary Syndrome.
542 *Archives of psychiatric nursing*, 31(6), 549–552.

543

544 Ambugo, E. A. (2014). Cross-country variation in the sociodemographic factors associated
545 with major depressive episode in Norway, the United Kingdom, Ghana, and Kenya. *Social
546 Science & Medicine*, 113, 154–160.

547

548 Andersen, I., Thielen, K., Bech, P., Nygaard, E., & Diderichsen, F. (2011). Increasing
549 prevalence of depression from 2000 to 2006. *Scandinavian Journal of Public Health*, 39(8),
550 857–863.

551

552 Andersson, D., Magnusson, H., Carstensen, J., & Borgquist, L. (2011). Co-morbidity and
553 health care utilisation five years prior to diagnosis for depression. A register-based study in a
554 Swedish population. *BMC Public Health*, 11, 552.

555

556 Asangbeh, S. L., Sobngwi, J. L., Ekali, G. L., Eyoum, C., & Msellati, P. (2016). Predictors of
557 depression among patients on art in a rural health district in North West Cameroon. *AIDS
558 Care*, 28(2), 205–208.

559

560 Aslund, C., Nilsson, K. W., Starrin, B., & Sjöberg, R. L. (2007). Shaming experiences and
561 the association between adolescent depression and psychosocial risk factors. *European Child
562 & Adolescent Psychiatry*, 16(5), 298–304.

563

564 Assari, S., Lankarani, M. M., & Caldwell, C. H. (2018). Does Discrimination Explain High
565 Risk of Depression among High-Income African American Men? *Behavioral sciences (Basel,
566 Switzerland)*, 8(4).

567

568 Avanci, J., Assis, S., Oliveira, R., & Pires, T. (2012). Childhood depression. Exploring the
569 association between family violence and other psychosocial factors in low-income Brazilian
570 schoolchildren. *Child and Adolescent Psychiatry and Mental Health Vol 6 2012*, ArtID 26, 6.

571

572 Ayazi, T., Lien, L., Eide, A. H., Ruom, M. M., & Hauff, E. (2012). What are the risk factors
573 for the comorbidity of posttraumatic stress disorder and depression in a war-affected
574 population? A cross-sectional community study in South Sudan. *BMC Psychiatry Vol 12
575 2012*, ArtID 175, 12.

576

577 Balci, G., Oter, G., Akdag, H., Bekki, A., Kisa, C., & Goka, E. (2016). Factors associated
578 with depression in patients with schizophrenia. *Journal of Mood Disorders*, 6(2), 54.

579

580 Batterham, P. J., Christensen, H., & Mackinnon, A. J. (2009). Modifiable risk factors
581 predicting major depressive disorder at four year follow-up: a decision tree approach. *BMC
582 Psychiatry*, 9, 75.

583

584 Bautista, R. E. D., & Erwin, P. A. (2013). Analyzing depression coping strategies of patients
585 with epilepsy: a preliminary study. *Seizure*, 22(9), 686–691.

586

587 Beard, J. R., Tracy, M., Vlahov, D., & Galea, S. (2008). Trajectory and socioeconomic
588 predictors of depression in a prospective study of residents of New York City. *Annals of*
589 *Epidemiology*, 18(3), 235–243.

590

591 Bekaroğlu, M., Uluutku, N., Tanriöver, S., & Kirpınar, I. (1991). Depression in an elderly
592 population in Turkey. *Acta Psychiatrica Scandinavica*, 84(2), 174–178.

593

594 Berganza, C. E., & Aguilar, G. (1992). Depression in Guatemalan adolescents. *Adolescence*,
595 27(108), 771–82.

596

597 Bhatia, R., Hartman, C., Kallen, M. A., Graham, J., & Giordano, T. P. (2011). Persons newly
598 diagnosed with HIV infection are at high risk for depression and poor linkage to care: results
599 from the Steps Study. *AIDS and Behavior*, 15(6), 1161–1170.

600

601 Blanco, C., Okuda, M., Markowitz, J. C., Liu, S.-M., Grant, B. F., & Hasin, D. S. (2010). The
602 epidemiology of chronic major depressive disorder and dysthymic disorder: results from the
603 National Epidemiologic Survey on Alcohol and Related Conditions. *The Journal of Clinical*
604 *Psychiatry*, 71(12), 1645–1656.

605

606 Blay, S. L., Fillenbaum, G. G., Marinho, V., Andreoli, S. B., & Gastal, F. L. (2011).

607 Increased health burden associated with comorbid depression in older Brazilians with

608 diabetes. *Journal of Affective Disorders*, 134(1–3), 77–84.

609

610 Braich, P. S., Lal, V., Hollands, S., & Almeida, D. R. (2012). Burden and depression in the
611 caregivers of blind patients in India. *Ophthalmology*, 119(2), 221–226.

612

613 Butterworth, P., Olesen, S. C., & Leach, L. S. (2012). The role of hardship in the association
614 between socio-economic position and depression. *The Australian and New Zealand Journal*
615 *of Psychiatry*, 46(4), 364–373.

616

617 Buvneshkumar, M., John, K. R., & Logaraj, M. (2018). A study on prevalence of depression
618 and associated risk factors among elderly in a rural block of Tamil Nadu. *Indian journal of*
619 *public health*, 62(2), 89–94.

620

621 Çakıcı, M., Gökçe, Ö., Babayiğit, A., Çakıcı, E., & Eş, A. (2017). Depression: point-
622 prevalence and risk factors in a North Cyprus household adult cross-sectional study. *BMC*
623 *Psychiatry*, 17(1), 387.

624

625 Castilla-Puentes, R. C., Secin, R., Grau, A., Galeno, R., Feijo de Mello, M., Pena, N., &
626 Sanchez-Russi, C. A. (2008). A multicenter study of major depressive disorder among
627 emergency department patients in Latin-American countries. *Depression and Anxiety*,
628 25(12), E199-204.

629

630 Castro, L. S., Castro, J., Hoexter, M. Q., Quarantini, L. C., Kauati, A., Mello, L. E., Santos-
631 Silva, R., et al. (2013). Depressive symptoms and sleep: a population-based
632 polysomnographic study. *Psychiatry Research*, 210(3), 906–912.

633

634 Chang, B., Steimel, J., Moller, D. R., Baughman, R. P., Judson, M. A., Yeager, H., Teirstein,
635 A. S., et al. (2001). Depression in sarcoidosis. *American Journal of Respiratory and Critical*
636 *Care Medicine*, 163(2), 329–334.

637

638 Chiavegatto Filho, A. D. P., Kawachi, I., Wang, Y. P., Viana, M. C., & Andrade, L. H. S. G.
639 (2013). Does income inequality get under the skin? A multilevel analysis of depression,
640 anxiety and mental disorders in Sao Paulo, Brazil. *Journal of Epidemiology and Community*
641 *Health*, 67(11), 966–972.

642

643 Clayton, P. J., Halikas, J. A., & Maurice, W. L. (1972). The depression of widowhood. *The*
644 *British Journal of Psychiatry*, 120(554), 71–77.

645

646 Cole, A. L., Lee, P. J., Hughes, D. A., Deegan, P. B., Waldek, S., & Lachmann, R. H. (2007).
647 Depression in adults with Fabry disease: a common and under-diagnosed problem. *Journal of*
648 *Inherited Metabolic Disease*, 30(6), 943–951.

649

650 Comstock, G. W., & Helsing, K. J. (1976). Symptoms of depression in two communities.
651 *Psychological Medicine*, 6(4), 551–563.

652

653 Coombe, C. M. (2008). The effects of urban residential environments on mental well being:
654 A multilevel analysis of neighborhood stability, middle income composition and depression
655 in detroit. *Dissertation Abstracts International: Section B: The Sciences and Engineering*,
656 68(10-B), 6613.

657

658 Deveci, S. E., Açık, Y., Dag, D. G., Tokdemir, M., & Gündoğdu, C. (2010). The frequency of
659 depression and menopause-related symptoms in postmenopausal women living in a province
660 in Eastern Turkey, and the factors that affect depressive status. *Medical Science Monitor*,
661 16(4), PH40-47.

662

663 Dillard, D. A., Smith, J. J., Ferucci, E. D., & Lanier, A. P. (2012). Depression prevalence and
664 associated factors among Alaska Native people: the Alaska education and research toward
665 health (EARTH) study. *Journal of Affective Disorders*, 136(3), 1088–1097.

666

667 Dismuke, C. E., & Egede, L. E. (2010). Association between major depression, depressive
668 symptoms and personal income in US adults with diabetes. *General Hospital Psychiatry*,
669 32(5), 484–491.

670

671 Donoho, C. J., LeardMann, C., O'Malley, C. A., Walter, K. H., Riviere, L. A., Curry, J. F., &
672 Adler, A. B. (2018). Depression among military spouses: Demographic, military, and service
673 member psychological health risk factors. *Depression and Anxiety*, 35(12), 1137–1144.

674

675 Duthé, G., Rossier, C., Bonnet, D., Soura, A. B., & Corker, J. (2016). Mental health and
676 urban living in sub-Saharan Africa: major depressive episodes among the urban poor in
677 Ouagadougou, Burkina Faso. *Population health metrics*, 14(1), 18.

678

679 Feuillet, P., Lert, F., Tron, L., Aubriere, C., Spire, B., Dray-Spira, R., & Agence Nationale de
680 Recherche sur le Sida et les Hépatites Virales (ANRS)-VIH: Enquête sur les personnes
681 atteintes (Vespa2) Study Group. (2017). Prevalence of and factors associated with depression
682 among people living with HIV in France. *HIV Medicine*, 18(6), 383–394.

683

684 Figueiredo, J. H. C., Silva, N. A. de S. E., Pereira, B. de B., & Oliveira, G. M. M. de. (2017).

685 Major Depression and Acute Coronary Syndrome-Related Factors. *Arquivos brasileiros de*

686 *cardiologia*, 108(3), 217–227.

687

688 Freeman, A., Tyrovolas, S., Koyanagi, A., Chatterji, S., Leonardi, M., Ayuso-Mateos, J. L.,

689 Tobiasz-Adamczyk, B., et al. (2016). The role of socio-economic status in depression: results

690 from the COURAGE (aging survey in Europe). *BMC Public Health*, 16(1), 1098.

691

692 Goodman, E., Slap, G. B., & Huang, B. (2003). The public health impact of socioeconomic

693 status on adolescent depression and obesity. *American Journal of Public Health*, 93(11),

694 1844–1850.

695

696 Gupta, R., Dandu, M., Packel, L., Rutherford, G., Leiter, K., Phaladze, N., Korte, F. P., et al.

697 (2010). Depression and HIV in Botswana: a population-based study on gender-specific

698 socioeconomic and behavioral correlates. *Plos One*, 5(12), e14252.

699

700 Habtewold, T. D., Alemu, S. M., & Haile, Y. G. (2016). Sociodemographic, clinical, and

701 psychosocial factors associated with depression among type 2 diabetic outpatients in Black

702 Lion General Specialized Hospital, Addis Ababa, Ethiopia: a cross-sectional study. *BMC*

703 *Psychiatry*, 16, 103.

704

705 Hamano, T., Li, X., Lönn, S. L., Nabika, T., Sundquist, J., & Sundquist, K. (2018). Is familial

706 risk for depression confounded by individual and familial socioeconomic factors and

707 neighborhood environmental factors? A 7-year follow-up study in Sweden. *Psychiatry*
708 *Research*, 266, 30–35.

709

710 Hankerson, S. H., Lee, Y. A., Brawley, D. K., Braswell, K., Wickramaratne, P. J., &
711 Weissman, M. M. (2015). Screening for Depression in African-American Churches.
712 *American Journal of Preventive Medicine*, 49(4), 526–533.

713

714 Hansen, T., Slagsvold, B., & Veenstra, M. (2017). Educational inequalities in late-life
715 depression across Europe: results from the generations and gender survey. *European journal*
716 *of ageing*, 14(4), 407–418.

717

718 Ho, H. C., Lau, K. K.-L., Yu, R., Wang, D., Woo, J., Kwok, T. C. Y., & Ng, E. (2017).
719 Spatial Variability of Geriatric Depression Risk in a High-Density City: A Data-Driven
720 Socio-Environmental Vulnerability Mapping Approach. *International Journal of*
721 *Environmental Research and Public Health*, 14(9).

722

723 Hu, A., Xue, Z., Mwansisya, T. E., Zhou, A., Pu, W., Chen, X., Sun, M., et al. (2015). Major
724 depressive disorder in hemodialysis patients in China. *Asia-Pacific psychiatry*: official
725 *journal of the Pacific Rim College of Psychiatrists*, 7(1), 78–84.

726

727 Jaffary, M., Samo, J. A., & Mujtaba, S. W. A. (2016). Rate of Anxiety and Depression in
728 Cases of Bronchial Asthma. *Pakistan Journal of Medical & Health Sciences*, 10(4), 1353–
729 1355.

730

731 Jayashree, K., Mithra, P. P., Nair, M. K. C., Unnikrishnan, B., & Pai, K. (2018). Depression
732 and Anxiety Disorders among Schoolgoing Adolescents in an Urban Area of South India.
733 Indian journal of community medicine □: official publication of Indian Association of
734 Preventive & Social Medicine, 43(Suppl 1), S28–S32.

735

736 Joergensen, T. S. H., Maartensson, S., Ibfelt, E. H., Joergensen, M. B., Wium-Andersen, I.
737 K., Wium-Andersen, M. K., Prescott, E., et al. (2016). Depression following acute coronary
738 syndrome: a Danish nationwide study of potential risk factors. Social Psychiatry and
739 Psychiatric Epidemiology, 51(11), 1509–1523.

740

741 Johanssen, A., Rydmark, I., Söder, B., & Asberg, M. (2007). Gingival inflammation,
742 increased periodontal pocket depth and elevated interleukin-6 in gingival crevicular fluid of
743 depressed women on long-term sick leave. Journal of periodontal research, 42(6), 546–552.

744

745 Johnston, E., Johnson, S., McLeod, P., & Johnston, M. (2004). The relation of body mass
746 index to depressive symptoms. Canadian Journal of Public Health, 95(3), 179–183.

747

748 Khalil, M. I., Rahman, M. R., Munira, S., & Jahan, M. U. (2018). Risk factors of major
749 depressive disorder in parkinson's disease. Bangladesh Medical Research Council bulletin,
750 44(1), 9.

751

752 Khazaepour, Z., Taheri-Otaghsara, S.-M., & Naghdi, M. (2015). Depression following spinal
753 cord injury: its relationship to demographic and socioeconomic indicators. Topics in spinal
754 cord injury rehabilitation, 21(2), 149–155.

755

- 756 Kim, J.-M., Shin, I.-S., Yoon, J.-S., & Stewart, R. (2002). Prevalence and correlates of late-
757 life depression compared between urban and rural populations in Korea. *International Journal*
758 *of Geriatric Psychiatry*, 17(5), 409–415.
- 759
- 760 Kim, K. W., Kim, S. H., Shin, J. H., Choi, B. Y., Nam, J. H., & Park, S.-C. (2014).
761 Psychosocial, physical, and autonomic correlates of depression in Korean adults: results from
762 a county-based depression screening study. *Psychiatry investigation*, 11(4), 402–411.
- 763
- 764 Kim, M. C., Jung, Y. S., Song, Y. S., Lee, J. I., Park, J. H., Sohn, C. I., Choi, K. Y., et al.
765 (2016). Factors Associated with Anxiety and Depression in Korean Patients with Inactive
766 Inflammatory Bowel Disease. *Gut and Liver*, 10(3), 399–405.
- 767
- 768 Kinyanda, E., Kuteesa, M., Scholten, F., Mugisha, J., Baisley, K., & Seeley, J. (2016). Risk
769 of major depressive disorder among older persons living in HIV-endemic central and
770 southwestern Uganda. *AIDS Care*, 28(12), 1516–1521.
- 771
- 772 Kinyanda, E., Woodburn, P., Tugumisirize, J., Kagugube, J., Ndyabangi, S., & Patel, V.
773 (2011). Poverty, life events and the risk for depression in Uganda. *Social Psychiatry and*
774 *Psychiatric Epidemiology*, 46(1), 35–44.
- 775
- 776 Kollanoor-Samuel, G., Wagner, J., Damio, G., Segura-Pérez, S., Chhabra, J., Vega-López,
777 S., & Pérez-Escamilla, R. (2011). Social support modifies the association between household
778 food insecurity and depression among Latinos with uncontrolled type 2 diabetes. *Journal of*
779 *Immigrant and Minority Health*, 13(6), 982–989.
- 780

- 781 Kosidou, K., Dalman, C., Lundberg, M., Hallqvist, J., Isacson, G., & Magnusson, C. (2011).
782 Socioeconomic status and risk of psychological distress and depression in the Stockholm
783 Public Health Cohort: a population-based study. *Journal of Affective Disorders*, 134(1–3),
784 160–167.
785
- 786 Kui, C., Yingfu, P., Chenling, X., Wenqing, W., Xiuhua, L., & Di, S. (2014). What are the
787 predictors of major depression in adult patients with epilepsy? *Epileptic disorders*:
788 international epilepsy journal with videotape, 16(1), 74–79.
789
- 790 Kumar, A., Clark, S., Boudreaux, E. D., & Camargo, C. A. (2004). A multicenter study of
791 depression among emergency department patients. *Academic Emergency Medicine*, 11(12),
792 1284–1289.
793
- 794 Lee, C.-T., Chiang, Y.-C., Huang, J.-Y., Tantoh, D. M., Nfor, O. N., Lee, J.-F., Chang, C.-C.,
795 et al. (2016). Incidence of Major Depressive Disorder: Variation by Age and Sex in Low-
796 Income Individuals: A Population-Based 10-Year Follow-Up Study. *Medicine*, 95(15),
797 e3110.
798
- 799 Lemogne, C., Meneton, P., Wiernik, E., Quesnot, A., Consoli, S. M., Ducimetière, P., Nabi,
800 H., et al. (2017). When Blue-Collars Feel Blue: Depression and Low Occupational Grade as
801 Synergistic Predictors of Incident Cardiac Events in Middle-Aged Working Individuals.
802 *Circulation. Cardiovascular Quality and Outcomes*, 10(2).
803
- 804 Lin, F. G., Hsieh, Y. H., & Tung, H. J. (2012). Interactive effects of family socioeconomic
805 status and body mass index on depression in school-aged children, 21(1), 64–72.

806

807 Long, M. D., Kappelman, M. D., Martin, C. F., Chen, W., Anton, K., & Sandler, R. S.

808 (2014). Risk factors for depression in the elderly inflammatory bowel disease population.

809 *Journal of Crohn's & colitis*, 8(2), 113–119.

810

811 Lotfaliany, M., Bowe, S. J., Kowal, P., Orellana, L., Berk, M., & Mohebbi, M. (2018).

812 Depression and chronic diseases: Co-occurrence and communality of risk factors. *Journal of*

813 *Affective Disorders*, 241, 461–468.

814

815 Lu, J., Ruan, Y., Huang, Y., Yao, J., Dang, W., & Gao, C. (2008). Major depression in

816 Kunming: prevalence, correlates and co-morbidity in a south-western city of China. *Journal*

817 *of Affective Disorders*, 111(2–3), 221–226.

818

819 Madianos, M., Economou, M., Alexiou, T., & Stefanis, C. (2011). Depression and economic

820 hardship across Greece in 2008 and 2009: two cross-sectional surveys nationwide. *Social*

821 *Psychiatry and Psychiatric Epidemiology*, 46(10), 943–952.

822

823 Magklara, K., Bellos, S., Niakas, D., Stylianidis, S., Kolaitis, G., Mavreas, V., & Skapinakis,

824 P. (2015). Depression in late adolescence: a cross-sectional study in senior high schools in

825 Greece. *BMC Psychiatry*, 15, 199.

826

827 Maharaj, R G, Reid, S. D., Misir, A., & Simeon, D. T. (2005). Depression and its associated

828 factors among patients attending chronic disease clinics in Southwest Trinidad. *West Indian*

829 *Medical Journal*, 54(6), 369–374.

830

831 Maharaj, Rohan G. (2007). Depression and the nature of Trinidadian family practice: a cross-
832 sectional study. *BMC family practice*, 8, 25.

833

834 Mahmood, S., Hassan, S. Z., Tabraze, M., Khan, M. O., Javed, I., Ahmed, A., Siddiqui, O.
835 M., et al. (2017). Prevalence and predictors of depression amongst hypertensive individuals
836 in karachi, pakistan. *Cureus*, 9(6), e1397.

837

838 McCormick, N., Trupin, L., Yelin, E. H., & Katz, P. P. (2018). Socioeconomic predictors of
839 incident depression in systemic lupus erythematosus. *Arthritis Care & Research*, 70(1), 104–
840 113.

841

842 McDonald, L. S. (2011). The relationship between joblessness and depression and depressive
843 symptomatology among a working age adult cohort in post-conflict Bosnia-Herzegovina
844 (2001-2004). *Dissertation Abstracts International: Section B: The Sciences and Engineering*,
845 72(3-B), 1445.

846

847 Modabber-Nia, M.-J., Shodjai-Tehrani, H., Moosavi, S.-R., Jahanbakhsh-Asli, N., & Fallahi,
848 M. (2007). The prevalence of depression among high school and preuniversity adolescents:
849 Rasht, northern Iran. *Archives of Iranian medicine*, 10(2), 141–146.

850

851 Mojtabai, R., & Olfson, M. (2004). Major depression in community-dwelling middle-aged
852 and older adults: prevalence and 2- and 4-year follow-up symptoms. *Psychological Medicine*,
853 34(4), 623–634.

854

- 855 Muhwezi, W. W., Agren, H., Neema, S., Maganda, A. K., & Musisi, S. (2008). Life events
856 associated with major depression in Ugandan primary healthcare (PHC) patients: issues of
857 cultural specificity. *The International Journal of Social Psychiatry*, 54(2), 144–163.
- 858
- 859 Murata, C., Kondo, K., Hirai, H., Ichida, Y., & Ojima, T. (2008). Association between
860 depression and socio-economic status among community-dwelling elderly in Japan: the Aichi
861 Gerontological Evaluation Study (AGES). *Health & Place*, 14(3), 406–414.
- 862
- 863 Murcia, M., Chastang, J.-F., & Niedhammer, I. (2015). Educational inequalities in major
864 depressive and generalized anxiety disorders: results from the French national SIP study.
865 *Social Psychiatry and Psychiatric Epidemiology*, 50(6), 919–928.
- 866
- 867 Mushtaque, A., Gulati, R., Hossain, M. M., & Azmi, S. A. (2016). Prevalence of depression
868 in patients of type 2 diabetes mellitus: A cross sectional study in a tertiary care centre.
869 *Diabetes & metabolic syndrome*, 10(4), 238–241.
- 870
- 871 Nahon, S., Lahmek, P., Durance, C., Olympie, A., Lesgourgues, B., Colombel, J.-F., &
872 Gendre, J.-P. (2012). Risk factors of anxiety and depression in inflammatory bowel disease.
873 *Inflammatory Bowel Diseases*, 18(11), 2086–2091.
- 874
- 875 Nicholson, A., Pikhart, H., Pajak, A., Malyutina, S., Kubinova, R., Peasey, A., Topor-Madry,
876 R., et al. (2008). Socio-economic status over the life-course and depressive symptoms in men
877 and women in Eastern Europe. *Journal of Affective Disorders*, 105(1–3), 125–136.
- 878

- 879 Nik Jaafar, N. R., Selamat Din, S. H., Mohamed Saini, S., Ahmad, S. N. A., Midin, M., Sidi,
880 H., Silim, U. A., et al. (2014). Clinical depression while caring for loved ones with breast
881 cancer. *Comprehensive Psychiatry*, 55 Suppl 1, S52-9.
882
- 883 Nikulina, V., Widom, C. S., & Czaja, S. (2011). The role of childhood neglect and childhood
884 poverty in predicting mental health, academic achievement and crime in adulthood. *American*
885 *Journal of Community Psychology*, 48(3–4), 309–321.
886
- 887 Nomoto, S. H., Longhi, R. M. P., de Barros, B. P., Croda, J., Ziff, E. B., & Castelon
888 Konkiewitz, E. (2015). Socioeconomic disadvantage increasing risk for depression among
889 recently diagnosed HIV patients in an urban area in Brazil: cross-sectional study. *AIDS Care*,
890 27(8), 979–985.
891
- 892 Ompad, D. C., Palamar, J. J., Krause, K. D., Kapadia, F., & Halkitis, P. N. (2018). Reliability
893 and validity of a material resources scale and its association with depression among young
894 men who have sex with men: the P18 cohort study. *American journal of men's health*, 12(5),
895 1384–1397.
896
- 897 Pahkala, K., Kesti, E., Köngäs-Saviaro, P., Laippala, P., & Kivelä, S. L. (1995). Prevalence
898 of depression in an aged population in Finland. *Social Psychiatry and Psychiatric*
899 *Epidemiology*, 30(3), 99–106.
900
- 901 Park, J. H., Kim, K. W., Kim, M.-H., Kim, M. D., Kim, B.-J., Kim, S.-K., Kim, J. L., et al.
902 (2012). A nationwide survey on the prevalence and risk factors of late life depression in
903 South Korea. *Journal of Affective Disorders*, 138(1–2), 34–40.

904

905 Pikhartova, J., Chandola, T., Kubinova, R., Bobak, M., Nicholson, A., & Pikhart, H. (2009).

906 Neighbourhood socioeconomic indicators and depressive symptoms in the Czech Republic: a

907 population based study. *International journal of public health*, 54(4), 283–293.

908

909 Poongothai, S., Pradeepa, R., Ganesan, A., & Mohan, V. (2009). Prevalence of depression in

910 a large urban South Indian population--the Chennai Urban Rural Epidemiology Study

911 (CURES-70). *Plos One*, 4(9), e7185.

912

913 Post, D. M., Gehlert, S., Hade, E. M., Reiter, P. L., Ruffin, M., & Paskett, E. D. (2013).

914 Depression and SES in women from Appalachia. *Journal of Rural Mental Health*, 37(1), 2–

915 15.

916

917 Qiu, J., Yang, M., Chen, W., Gao, X., Liu, S., Shi, S., & Xie, B. (2012). Prevalence and

918 correlates of major depressive disorder in breast cancer survivors in Shanghai, China.

919 *Psycho-Oncology*, 21(12), 1331–1337.

920

921 Raji, S. O., Lawani, A. O., & James, B. O. (2016). Prevalence and correlates of major

922 depression among Nigerian adults with sickle cell disease. *International Journal of Psychiatry*

923 *in Medicine*, 51(5), 456–466.

924

925 Reinherz, H. Z., Giaconia, R. M., Lefkowitz, E. S., Pakiz, B., & Frost, A. K. (1993).

926 Prevalence of psychiatric disorders in a community population of older adolescents. *Journal*

927 *of the American Academy of Child and Adolescent Psychiatry*, 32(2), 369–377.

928

929 Roze, M., Vandentorren, S., van der Waerden, J., & Melchior, M. (2018). Factors associated
930 with depression among homeless mothers. Results of the ENFAMS survey. *Journal of*
931 *Affective Disorders*, 229, 314–321.

932

933 Saxena, A., & Suman, A. (2015). Magnitude and determinants of depression in acute stroke
934 patients admitted in a rural tertiary care hospital. *Journal of neurosciences in rural practice*,
935 6(2), 202–207.

936

937 Shi, J., Zhang, Y., Liu, F., Li, Y., Wang, J., Flint, J., Gao, J., et al. (2014). Associations of
938 educational attainment, occupation, social class and major depressive disorder among Han
939 Chinese women. *Plos One*, 9(1), e86674.

940

941 Sidik, S. M., Arroll, B., Goodyear-Smith, F., & Ahmad, R. (2012). Prevalence of depression
942 among women attending a primary urban care clinic in Malaysia. *Singapore Medical Journal*,
943 53(7), 468–473.

944

945 Smith, K. L. W., Matheson, F. I., Moineddin, R., & Glazier, R. H. (2007). Gender, income
946 and immigration differences in depression in canadian urban centres. *Canadian Journal of*
947 *Public Health*, 98(2), 149–153.

948

949 Spendlove, D. C., West, D. W., & Stanish, W. M. (1984). Risk factors and the prevalence of
950 depression in Mormon women. *Social Science & Medicine*, 18(6), 491–495.

951

- 952 Stansfeld, S. A., Clark, C., Rodgers, B., Caldwell, T., & Power, C. (2008). Childhood and
953 adulthood socio-economic position and midlife depressive and anxiety disorders. *The British*
954 *Journal of Psychiatry*, 192(2), 152–153.
- 955
- 956 Stolic, R. V., Trajkovic, G. Z., Mihailovic, B., Sipic, M. V., Celic, D. B., Lazic, S. F.,
957 Nikolic, G. R., et al. (2010). Characteristics of depression in obese people living in an
958 insecure environment. *Indian Journal of Medical Sciences*, 64(7), 307–314.
- 959
- 960 Tani, Y., Fujiwara, T., Kondo, N., Noma, H., Sasaki, Y., & Kondo, K. (2016). Childhood
961 Socioeconomic Status and Onset of Depression among Japanese Older Adults: The JAGES
962 Prospective Cohort Study. *The American Journal of Geriatric Psychiatry*, 24(9), 717–726.
- 963
- 964 Tilahun, A. B., Bekele, G., Mekonnen, N., & Tamiru, E. (2016). Prevalence of unrecognized
965 depression and associated factors among patients attending medical outpatient department in
966 Adare Hospital, Hawassa, Ethiopia. *Neuropsychiatric Disease and Treatment*, 12, 2723–2729.
- 967
- 968 Tintle, N., Bacon, B., Kostyuchenko, S., Gutkovich, Z., & Bromet, E. J. (2011). Depression
969 and its correlates in older adults in Ukraine. *International Journal of Geriatric Psychiatry*,
970 26(12), 1292–1299.
- 971
- 972 Turner, R. J., Lloyd, D. A., & Roszell, P. (1999). Personal resources and the social
973 distribution of depression. *American Journal of Community Psychology*, 27(5), 643–672.
- 974

975 Vallée, J., Cadot, E., Roustit, C., Parizot, I., & Chauvin, P. (2011). The role of daily mobility
976 in mental health inequalities: the interactive influence of activity space and neighbourhood of
977 residence on depression. *Social Science & Medicine*, 73(8), 1133–1144.

978

979 Verger, P., Guagliardo, V., Gilbert, F., Rouillon, F., & Kovess-Masfety, V. (2010).
980 Psychiatric disorders in students in six French universities: 12-month prevalence,
981 comorbidity, impairment and help-seeking. *Social Psychiatry and Psychiatric Epidemiology*,
982 45(2), 189–199.

983

984 Wainwright, N. W. J., & Surtees, P. G. (2004). Area and individual circumstances and mood
985 disorder prevalence. *The British Journal of Psychiatry*, 185, 227–232.

986

987 Walters, K., Breeze, E., Wilkinson, P., Price, G. M., Bulpitt, C. J., & Fletcher, A. (2004).
988 Local area deprivation and urban-rural differences in anxiety and depression among people
989 older than 75 years in Britain. *American Journal of Public Health*, 94(10), 1768–1774.

990

991 Wang, J. J. (2001). Prevalence and correlates of depressive symptoms in the elderly of rural
992 communities in southern Taiwan. *The journal of nursing research*: JNR, 9(3), 1–12.

993

994 Wang, J., Patten, S. B., Currie, S., Sareen, J., & Schmitz, N. (2012). A population-based
995 longitudinal study on work environmental factors and the risk of major depressive disorder.
996 *American Journal of Epidemiology*, 176(1), 52–59.

997

998 Whelan-Goodinson, R., Ponsford, J. L., Schönberger, M., & Johnston, L. (2010). Predictors
999 of psychiatric disorders following traumatic brain injury. *The Journal of head trauma*
1000 *rehabilitation*, 25(5), 320–329.

1001

1002 Whooley, M. A., Kiefe, C. I., Chesney, M. A., Markovitz, J. H., Matthews, K., Hulley, S. B.,
1003 & CARDIA Study. (2002). Depressive symptoms, unemployment, and loss of income: The
1004 CARDIA Study. *Archives of Internal Medicine*, 162(22), 2614–2620.

1005

1006 Wilson, K. C., Chen, R., Taylor, S., McCracken, C. F., & Copeland, J. R. (1999). Socio-
1007 economic deprivation and the prevalence and prediction of depression in older community
1008 residents. The MRC-ALPHA Study. *The British Journal of Psychiatry*, 175, 549–553.

1009

1010 Wirback, T., Möller, J., Larsson, J.-O., & Engström, K. (2018). Social differences in
1011 diagnosed depression among adolescents in a Swedish population based cohort. *BMC*
1012 *Psychiatry*, 18(1), 216.

1013

1014 Xu, X., Zhao, X., Qian, D., Dong, Q., & Gu, Z. (2015). Investigating Factors Associated with
1015 Depression of Type 2 Diabetic Retinopathy Patients in China. *Plos One*, 10(7), e0132616.

1016

1017 Yaka, E., Keskinoglu, P., Ucku, R., Yener, G. G., & Tunca, Z. (2014). Prevalence and risk
1018 factors of depression among community dwelling elderly. *Archives of Gerontology and*
1019 *Geriatrics*, 59(1), 150–154.

1020

- 1021 Yen, P. N., Lin, I.-F., Chang, W. P., Wang, J.-D., Chang, T.-C., Kuo, K.-L., Hwang, J.-S., et
1022 al. (2014). Risk factors of depression after prolonged low-dose rate environmental radiation
1023 exposure. *International journal of radiation biology*, 90(10), 859–866.
- 1024
- 1025 Yu, S., Yang, H., Guo, X., Zheng, L., & Sun, Y. (2016). Prevalence of Depression among
1026 Rural Residents with Diabetes Mellitus: A Cross-Sectional Study from Northeast China.
1027 *International Journal of Environmental Research and Public Health*, 13(6).
- 1028
- 1029 Yusim, A., Anbarasan, D., Hall, B., Goetz, R., Neugebauer, R., Stewart, T., Abou, J., et al.
1030 (2010). Sociocultural domains of depression among indigenous populations in Latin America.
1031 *International Review of Psychiatry*, 22(4), 370–377.
- 1032
- 1033 Zhao, D., Hu, C., Chen, J., Dong, B., Ren, Q., Yu, D., Zhao, Y., et al. (2018). Risk factors of
1034 geriatric depression in rural China based on a generalized estimating equation. *International*
1035 *Psychogeriatrics*, 30(10), 1489–1497.
- 1036
- 1037 Zhong, B., Chen, H., Zhang, J., Xu, H., Zhou, C., Yang, F., Song, J., et al. (2010).
1038 Prevalence, correlates and recognition of depression among inpatients of general hospitals in
1039 Wuhan, China. *General Hospital Psychiatry*, 32(3), 268–275.
- 1040
- 1041 Zhou, X., Kang, L., Sun, X., Song, H., Mao, W., Huang, X., Zhang, Y., et al. (2013). Risk
1042 factors of mental illness among adult survivors after the Wenchuan earthquake. *Social*
1043 *Psychiatry and Psychiatric Epidemiology*, 48(6), 907–915.
- 1044

1045 Zis, P., Yfanti, P., Siatouni, A., Tavernarakis, A., & Gatzonis, S. (2014). Determinants of
1046 depression among patients with epilepsy in Athens, Greece. *Epilepsy & Behavior*, 33, 106–
1047 109.
1048