

1 **Prognostic value of plasma IgG N-glycome traits in patients with pulmonary**
2 **arterial hypertension: an observational cohort study**

3 **Running title:** *Plasma prognostic glycan biomarker for PAH*

4 Ze-Jian Zhang, PhD^{1#}; Chao Liu, MD^{2#}; Jie-Ling Ma, MD^{2#}; Jing-Si Ma, BS³; Jia
5 Wang, BS⁴; Ruo-Nan Li, BS³; Dan Lu, MD⁵; Yu-Ping Zhou, MD²; Tian-Yu Lian,
6 MD¹; Si-Jin Zhang, MD⁶; Jing-Hui Li, MD⁷; Lan Wang, MD⁸; Kai Sun, MD¹; Chun-
7 Yan Cheng, MD^{6*}; Wen-Hui Wu^{8*}; and Zhi-Cheng Jing, MD^{6*}

8 **Affiliations**

9 ¹State Key Laboratory of Complex Severe and Rare Diseases, Peking Union Medical
10 College Hospital, Chinese Academy of Medical Sciences and Peking Union Medical
11 College, Beijing 100730, China;

12 ²Department of Cardiology, State Key Laboratory of Complex Severe and Rare
13 Diseases, Peking Union Medical College Hospital, Chinese Academy of Medical
14 Sciences and Peking Union Medical College, Beijing 100730, China;

15 ³School of Pharmacy, Henan University, Kaifeng 475004, China;

16 ⁴Department of Medical Laboratory, Weifang Medical University, Weifang 261053
17 China;

18 ⁵Cardiac Department, Aerospace Center Hospital, Peking University Aerospace School
19 of Clinical Medicine, Beijing 100049, China;

20 ⁶Department of Cardiology, Guangdong Institute of Cardiovascular Diseases,
21 Guangdong Provincial People's Hospital, Guangdong Academy of Medical Sciences,
22 Southern Medical University, Guangzhou 510080, China;

NOTE: This preprint reports new research that has not been certified by peer review and should not be used to guide clinical practice.

23 ⁷State Key Laboratory of Cardiovascular Disease and FuWai Hospital, Chinese
24 Academy of Medical Sciences and Peking Union Medical College, Beijing 100037,
25 China;

26 ⁸Department of Cardio-Pulmonary Circulation, Shanghai Pulmonary Hospital, School
27 of Medicine, Tongji University, Shanghai 200433, China.

28 [#]These authors contributed equally to this work as co-first authors.

29 ^{*}These authors contributed equally to this study as co-corresponding authors.

30 **Address for Correspondence:**

31 Zhi-Cheng Jing, MD, PhD

32 Department of Cardiology, Guangdong Institute of Cardiovascular Diseases,
33 Guangdong Provincial People's Hospital, Guangdong Academy of Medical Sciences,
34 Southern Medical University, No.106, Zhongshan 2nd Road, Guangzhou 510080,
35 China.

36 Tel: +86-13501353191

37 E-mail: jingzhicheng@vip.163.com

38 Wen-Hui Wu, MD

39 Department of Cardio-Pulmonary Circulation, Shanghai Pulmonary Hospital, School
40 of Medicine, Tongji University, Shanghai 200433, China, No.507, Zhengmin Road,
41 Shanghai 200433, China.

42 Tel: +86-13917180587

43 E-mail: wenhui5621006@126.com

44 Chun-Yan Cheng, MD

45 Department of Cardiology, Guangdong Institute of Cardiovascular Diseases,
46 Guangdong Provincial People's Hospital, Guangdong Academy of Medical Sciences,
47 Southern Medical University, No.106, Zhongshan 2nd Road, Guangzhou 510080,
48 China.

49 Tel: +86-20-83827812

50 E-mail: 073047chengchunyan@163.com

51 **Word Count for main text: 3773**

52 **Abstract**

53 **Background:** BNP (brain natriuretic peptide) or NT-proBNP (N-terminal proBNP) is
54 the only blood biomarker in the established risk calculators for pulmonary arterial
55 hypertension (PAH). New plasma biomarkers of systemic origin may improve the risk
56 assessment in PAH.

57 **Methods:** We utilized a robust mass spectrometry-based method to identify
58 prognostic plasma IgG N-glycome traits in PAH patients from two national referral
59 centers in China (Beijing [discovery] cohort, $n = 273$; Shanghai cohort [validation], n
60 $= 349$). Then the candidate IgG N-glycan traits were evaluated in combined cohorts
61 adjusted for potential confounders and subgroup analyses. At last, the candidate IgG
62 N-glycan traits were further evaluated against the established prognostic risk equation
63 (three-strata model from the SPAHR and COMPERA analyses) for PAH. The primary
64 endpoint was all-cause mortality.

65 **Results:** IgG Fucosylation was found to predict survival independent of age and sex
66 in the discovery cohort (HR: 0.377, 95% CI: 0.168-0.845, $P = 0.018$) with
67 confirmation in the validation cohort (HR: 0.264, 95% CI: 0.445-0.751, $P = 0.005$).
68 IgG Fucosylation remained a robust predictor of mortality in PAH patients in the
69 combined cohorts adjusting for potential confounders and in subgroup analyses based
70 on sex and treatment strategies. Moreover, the addition of the IgG Fucosylation to the
71 established three-strata model significantly improved the predictive accuracy from
72 AUC of 0.67 to AUC of 0.70 ($P = 0.043$) and IgG Fucosylation was useful in further
73 stratifying the intermediate risk PAH patients classified by the three-strata model into

74 intermediate-low and intermediate-high risk subgroups.

75 **Conclusions:** The plasma IgG Fucosylation informs prognosis independent of the

76 existing clinical assessments in PAH and may be useful in the clinical management of

77 patients with PAH.

78

79 **Keywords:** IgG N-glycans, pulmonary arterial hypertension, biomarker, prognosis,

80 risk stratification, fucosylation

81 **Non-standard Abbreviations and Acronyms**

82 6MWD: 6-minute walking distance

83 AUC: area under the curve

84 NT-proBNP: N-terminal pro-B-type natriuretic peptide

85 PAH: pulmonary arterial hypertension

86 PVR: pulmonary vascular resistance

87 RAP: right arterial pressure

88 ROC: receiver-operating characteristic

89 SvO₂: mixed venous oxygen saturation

90 WHO FC: World Health Organization functional class

91

92 **Clinical Perspective**

93 **What is new?**

- 94 • The plasma IgG Fucosylation, which is in different pathophysiological pathways
95 from other established risk factors of pulmonary arterial hypertension (PAH), can
96 inform prognosis independent of the existing clinical assessments in patients with
97 PAH.
- 98 • The addition of the IgG Fucosylation to the established three-strata model for PAH
99 prognosis significantly improved the predictive accuracy.
- 100 • IgG Fucosylation was useful in further stratifying the intermediate risk PAH
101 patients classified by the three-strata model into intermediate-high and
102 intermediate-low risk subgroups.

103 **What are the clinical implications?**

- 104 • Plasma IgG N-glycan biomarkers may provide a refined risk stratification in PAH
105 used in combination with the established risk factors.
- 106 • IgG Fucosylation involved in inflammatory pathways may not only be a promising
107 prognostic biomarker but also a potential novel therapeutic target, distinct from
108 existing targets, for patients with PAH.

109

110 **Introduction**

111 Pulmonary arterial hypertension (PAH) represents a rare and malignant
112 cardiopulmonary condition characterized by dysregulation of endothelium-derived
113 vasoactive factors, inflammatory processes, and obstructive remodeling of small
114 pulmonary arteries. These pathological changes lead to a progressive increase in
115 pulmonary vascular resistance (PVR) and mean pulmonary artery pressure,
116 culminating in right heart failure and, ultimately, death for the majority of affected
117 patients.^{1,2}

118

119 The prognosis of PAH remains poor with an estimated 5-year survival rate of 60% for
120 patients with advanced PAH.³⁻⁵ Nevertheless, treatment response varies between
121 patients due to the heterogeneity of the disease,⁶ and life expectancy is quite variable.

122 Risk stratification and regular assessment of disease severity are vital to guide the
123 clinical management of patients with PAH.^{1,2} The existing guidelines recommend
124 multiparametric risk calculators based on clinical assessment, right ventricular
125 function, exercise, and hemodynamic variables to inform prognosis and guide
126 treatment decision-making in PAH.^{1,2} However, the multidimensional approach
127 suffers from some disadvantages and limitations, such as not all these measurements
128 available at each patient visit, some factors obtained invasively, unsatisfied accuracy,
129 and restricted mechanisms reflected by the parameters. Moreover, in the established
130 multifactorial prognostic model, the circulating biomarker includes only BNP (brain
131 natriuretic peptide) or NT-proBNP (N-terminal proBNP). Abnormal immune

132 regulation and inflammation have been recognized as critical contributors to the
133 pathogenesis of PAH.⁷⁻⁹ New plasma biomarkers of systemic origin reflecting
134 different components of the pathophysiology of PAH such as immune dysregulation
135 and inflammation may improve the risk assessment of PAH and provide a more
136 sensitive measure of disease severity and therapeutic response.

137

138 Glycosylation is a prevalent and important post-translational modification that
139 modulates a variety of biological functions.^{10,11} Abnormal glycosylation of proteins is
140 thought to play a role in almost every major disease.^{12,13} IgG, the predominant
141 glycoprotein and antibody in human biofluids, is a key effector of the humoral
142 immune system and has multiple roles in maintaining the balance of inflammation at
143 the systemic level.¹⁴ The conserved N-linked glycans bound to the unique
144 glycosylation site Asn297 in the Fc domain of IgG are of the complex biantennary
145 type.^{15,16} The N-glycan compositions on IgG, particularly the core fucose moiety and
146 the terminal galactose or sialic acids, exhibit variability and hold pivotal roles in
147 regulating IgG structural stability and functional activity, which influences the
148 outcome of the immune response (e.g., antibody's effector functions).¹⁷ For example,
149 it has been widely acknowledged that decreased levels of IgG core fucose contribute
150 to increased antibody-dependent cellular cytotoxicity (ADCC) and inflammation.¹⁸⁻²¹
151 IgG loss of terminal galactose could trigger a proinflammatory response.^{22,23} It is
152 noteworthy that our team has previously demonstrated dysregulation of the plasma
153 IgG N-glycome in patients with chronic thromboembolic pulmonary hypertension²⁴

154 and the identified abnormal IgG N-glycan traits may play a crucial role in the
155 pathogenesis and progression of this condition.²⁴ Nevertheless, the glycosylation
156 characteristics of IgG and their prognostic value in patients with PAH have not yet
157 been explored.

158

159 The main objective of this study was to identify and validate plasma IgG N-glycan
160 traits that predict survival in patients with PAH to improve risk stratification.

161

162 **Methods**

163 **Study population**

164 From October 2006 to December 2019, all consecutive patients with a definite
165 diagnosis of idiopathic PAH or heritable PAH at two national pulmonary hypertension
166 referral centres (Shanghai Pulmonary Hospital with patients mainly from South China
167 and FuWai Hospital in Beijing with patients mainly from North China) were included
168 in this study. Idiopathic PAH was diagnosed based on baseline right heart
169 catheterization confirming newly diagnosed precapillary pulmonary hypertension,
170 defined by a resting mean pulmonary artery pressure \geq 25 mmHg, pulmonary artery
171 wedge pressure \leq 15 mmHg, and PVR $>$ 3 Wood units, in the absence of other known
172 causes of PAH.^{1,2} Patients with PAH were diagnosed with heritable PAH if their first or
173 second-degree relatives had a confirmed PAH diagnosis or died from a PAH-like
174 syndrome.^{1,2} The ethics review boards of Shanghai Pulmonary Hospital and FuWai
175 Hospital approved the protocols. Written informed consent was obtained from all

176 patients. This study complied with the principles of the Declaration of Helsinki.

177

178 **Baseline blood samples, data collection, and follow-up**

179 Baseline demographic and clinical characteristics, including World Health
180 Organization functional class (WHO FC), 6-minute walking distance (6MWD), and
181 invasive haemodynamics including right arterial pressure (RAP), mean pulmonary
182 artery pressure, pulmonary artery wedge pressure, cardiac index, PVR, and mixed
183 venous oxygen saturation (SvO₂) were collected. Baseline venous plasma for IgG N-
184 glycome profiling and haemodynamic data were obtained during the first diagnostic
185 right heart catheterization. Follow-ups were carried out through clinic visits or phone
186 or internet interviews, and the patient's survival time was calculated by months from
187 the initial PAH diagnosis date to January 2023 or the latest contact date. The primary
188 clinical endpoint was all-cause mortality.

189

190 **Mass spectrometric IgG N-glycome profiling**

191 The profiling of IgG N-glycome was carried out using matrix-assisted laser
192 desorption/ionization time-of-flight mass spectrometry,²⁵⁻²⁷ with raw mass
193 spectrometry data processing performed according to established methods outlined in
194 previous reports.²⁵⁻²⁷ Detailed procedures are provided in the Supplementary Material
195 for reference.

196

197 To combine the effects of individual detected N-glycan traits sharing similar

198 structures and better interpret the biological effects of IgG N-glycosylation,^{28,29}
199 derived (calculated) N-glycan traits representing the most important features of IgG
200 N-glycosylation including Galactosylation, Bisecting N-acetylglucosamine, and
201 Fucosylation were calculated from the directly detected N-glycans. The formulas used
202 for the calculation: Galactosylation = $H3N4F1 / (H4N4F1 + 2 * H5N4F1)$; Bisecting N-
203 acetylglucosamine = $H3N5F1 + H4N5F1 + H5N5F1$; Fucosylation = $H3N4F1 +$
204 $H4N4F1 + H3N5F1 + H5N4F1 + H4N5F1 + H5N5F1$ (H = hexose; N = N-
205 acetylhexosamine; F = deoxyhexose [fucose]).^{24,27} GlycoWorkbench software
206 (version 1.1.3480) was used to annotate the N-glycan structures.

207

208 **Statistical analysis**

209 Normality was determined using the Kolmogorov-Smirnov test. Continuous variables
210 were presented as mean \pm SD for normally distributed data, and as median
211 (interquartile range, 25% to 75%) for non-normally distributed variables. Categorical
212 variables were presented as n (%). Statistical analysis was performed with Statistic
213 Package for Social Science (SPSS Inc., Chicago, USA) version 22.0 and GraphPad
214 Prism version 8.0.0 for Windows (GraphPad Software, San Diego, California USA,
215 www.graphpad.com). All tests were two-tailed with a value of $P < 0.05$ considered
216 statistically significant.

217

218 Prognostic IgG N-glycan traits were identified by Cox regression analysis corrected
219 for age and sex in the discovery cohort and confirmed in the validation cohort. To

220 assess whether the prognostic IgG N-glycan trait screened out was an independent
221 prognostic factor, Cox regression analysis adjusted for potential confounders
222 including age, sex, type of PAH, treatment strategies, 6MWD, WHO FC, NT-proBNP,
223 RAP, SvO₂, and cardiac index were conducted. Further adjusted Cox regression
224 analyses were conducted in subgroups stratified by sex and therapeutic strategies. To
225 assess the added value of IgG N-glycan traits to the established risk model, we
226 compared the prognostic accuracy of the three-strata model (the established
227 prognostic risk equation derived from the SPAHR and the COMPERA registry)^{30,31}
228 with that of the IgG N-glycan + three-strata model using receiver-operating
229 characteristic (ROC) analysis. Additionally, IgG N-glycans were employed to further
230 stratify PAH patients classified as intermediate risk by the three-strata model, utilizing
231 Kaplan-Meier survival analysis. The optimal cut-off values for the prognostic IgG N-
232 glycan traits in Kaplan-Meier and Cox regression analyses were determined based on
233 the values that maximized the sum of sensitivity and specificity in ROC analysis.³²

234

235 **Results**

236 **Study population and baseline characteristics**

237 The study design is illustrated in Figure 1. A total of 273 patients with PAH enrolled
238 from Fuwai Hospital between 2013 and 2019 (discovery cohort) and 349 patients with
239 PAH enrolled from Shanghai Pulmonary Hospital between 2006 and 2013 (validation
240 cohort) were included in this study.

241

242 Among the patients, 58 (21.2%) in the discovery cohort and 109 (31.2%) in the
243 validation cohort were male. The mean ages were 32.8 ± 10.4 and 35.9 ± 16.8 years in
244 the discovery and validation cohorts, respectively. In the discovery cohort, 11 (4.0%)
245 patients received untargeted therapy, 80 (29.3%) patients received monotherapy, 148
246 (54.2%) patients received dual therapy, and 34 (12.5%) patients received triple
247 therapy. In the validation cohort, 66 (18.9%) patients received untargeted therapy, 227
248 (65.0%) patients received monotherapy, 53 (15.2%) patients received dual therapy,
249 and 3 (0.9%) patients received triple therapy (Table 1).

250

251 **Follow-up**

252 During a median follow-up of 39 (22-63) months, 41 patients (6.6%, 2 in the
253 discovery cohort and 39 in the validation cohort) were lost to follow-up. In total, 139
254 patients ($n = 52$ in the discovery cohort and $n = 87$ in the validation cohort) died at the
255 end of the follow-up periods.

256

257 **Plasma IgG N-glycome profiles in patients with PAH**

258 Eight IgG N-glycans were directly detected in our cohorts by matrix-assisted laser
259 desorption/ionization time of flight mass spectrometry. The representative annotated
260 mass spectrometry spectra of the IgG N-glycome profiles from the survivor and non-
261 survivor in our PAH cohorts are provided in Supplemental Figure S1, which
262 demonstrates variations in peak patterns between the two groups. As derived N-glycan
263 traits represent glycosylation changes shared by a group of structurally related N-

264 glycans and enable better interpretation of the biological effects of glycosylation than
265 directly detected N-glycan traits, three derived N-glycan traits including
266 Galactosylation, Bisecting N-acetylglucosamine, and Fucosylation were calculated
267 from the eight directly detected IgG N-glycans. We mainly evaluated IgG derived N-
268 glycan traits in the present study.

269

270 **Identification of prognostic IgG N-glycan traits in patients with PAH**

271 Discovery and validation cohorts were used to evaluate the associations of IgG N-
272 glycan traits with the survival of patients. In the discovery cohort, Galactosylation
273 (HR: 2.257, 95% CI: 1.274–4.001, $P = 0.005$; Figure 2A) and Fucosylation (HR:
274 0.377, 95% CI: 0.168–0.845, $P = 0.018$; Figure 2A) were found to predict survival
275 independent of age and sex. Bisecting N-acetylglucosamine had no prognostic value
276 (HR: 0.617, 95% CI: 0.219–1.737, $P = 0.361$; Figure 2A). We continued to validate
277 our results in the validation cohort. However, only Fucosylation was confirmed to be
278 associated with all-cause death independent of age and sex (HR: 0.264, 95% CI:
279 0.445–0.751, $P = 0.005$; Figure 2B) and the prognostic effect of Galactosylation was
280 not replicated (HR: 1.092, 95% CI: 0.694–1.717, $P = 0.705$; Figure 2B). The
281 Bisecting N-acetylglucosamine remained of no prognostic value in the validation
282 cohort (HR: 1.789, 95% CI: 0.554–5.776, $P = 0.330$; Figure 2B). Finally, IgG
283 Fucosylation was identified as a promising candidate prognostic glycan biomarker,
284 which was further validated below.

285

286 **The validation of the prognostic value of IgG Fucosylation**

287 We further evaluated the prognostic significance of IgG Fucosylation in the combined
288 cohorts. In total, death occurred in 13.1% (25 out of 191) and 29.2% (114 out of 390)
289 of patients in the high and low IgG Fucosylation groups, respectively, resulting in
290 respective 5-year survival rates of 88.5% and 74.6% ($P < 0.001$ for the log-rank test;
291 Figure 3).

292

293 To evaluate whether IgG Fucosylation independently impacts the outcome of patients
294 with PAH, Cox regression models were further adjusted for potential confounders
295 including 6MWD, WHO FC, NT-proBNP, RAP, SvO₂, cardiac index, type of PAH,
296 and treatment strategies in addition to age and sex. Our results showed that the low
297 IgG Fucosylation was still significantly associated with a high risk of all-cause death
298 in patients with PAH (HR: 0.490; 95% CI: 0.315–0.763; $P = 0.002$; Table 2; Figure 4).

299

300 Furthermore, in order to comprehensively demonstrate the prognostic value of IgG
301 Fucosylation, we further conducted subgroup analyses based on sex and therapeutic
302 strategies. Our results showed that even after stratifying by sex, the association
303 between low IgG Fucosylation and increased all-cause mortality remained robust and
304 there was no significant interaction between sex and IgG Fucosylation ($P = 0.784$;
305 Table 2); Interestingly, low Fucosylation posed a greater risk for males (fully adjusted
306 models; male: HR: 0.387, 95% CI: 0.159–0.941, $P = 0.035$ and female: HR: 0.527,
307 95% CI: 0.307–0.906, $P = 0.014$; Table 2; Figure 4). Furthermore, we did not observe

308 interactions between IgG Fucosylation and therapeutic strategies ($P= 0.410$; Table 2).

309 We found that IgG Fucosylation continued to independently predict survival within

310 subgroups stratified based on therapeutic strategies (fully adjusted models; dual and

311 triple therapy: HR: 0.376, 95% CI: 0.148–0.954, $P = 0.043$; treatment naïve and

312 monotherapy: HR: 0.595, 95% CI: 0.354–1, $P = 0.033$; Table 2; Figure 4).

313

314 At last, we investigated whether the IgG Fucosylation offered improvements in risk

315 prediction in addition to the established prognostic risk equation (three-strata model

316 from the SPAHR and COMPERA analyses)^{30,31} in PAH. We found the addition of IgG

317 Fucosylation to the three-strata model improved the prediction of outcomes from area

318 under the curve (AUC) 0.67 (95%CI: 0.62–0.72) to 0.70 (95%CI: 0.65–0.75) by ROC

319 analysis ($P = 0.043$ for the difference in AUC) (Figure 5). In addition, about 60% of

320 patients in our cohort met intermediate risk criteria in the tree-strata model (Figure

321 6A) which was consistent with previous reports, and IgG Fucosylation was useful in

322 further dividing patients in the intermediate risk group into intermediate-high and

323 intermediate-low risk subgroups ($P < 0.001$, Figure 6B).

324

325 **Discussion**

326 Risk stratification has become an essential part of the management of patients with

327 PAH. The joint guidelines on pulmonary hypertension released in 2015 by the

328 European Society of Cardiology (ESC) and the European Respiratory Society (ERS)

329 introduced a multidimensional risk stratification model integrating 14 variables

330 obtained from nine distinct assessments. According to this model, the risk is
331 categorized into three strata: low, intermediate, or high.^{1,2} However, based on the
332 three-strata model, the majority of patients with PAH were classified as intermediate
333 risk.^{30,31} Despite the development of refined or alternative methods, such as the
334 prognostic risk equation from the French,³³ SPAHR,³⁴ REVEAL,³⁵ and COMPERA³⁶
335 Registries, challenges persist regarding the accuracy of stratification and the
336 consistent availability of various clinical parameters during every patient visit. These
337 limitations underscore the need for improvement in the approach to assessing the risk
338 of PAH. In this context, several researchers have attempted to develop new protein
339 biomarkers/panels from blood samples to improve risk assessment.³⁷⁻³⁹ Although
340 these studies have made significant contributions to exploring novel biomarkers for
341 PAH, the latest 2022 ESC/ERS guidelines for PAH continued to recommend NT-
342 proBNP as the exclusive blood biomarker.⁴⁰ Significantly, the studies of glycosylation
343 of plasma proteins as potential biomarkers also shed new light on this field. The roles
344 of plasma IgG N-glycosylation in cardiovascular diseases have been long investigated
345 and discussed. The IgG glycosylation profile was found to be associated with
346 cardiovascular disease risk score and subclinical atherosclerosis.⁴¹ Additionally,
347 alteration in plasma IgG N-glycosylation profiles was reported to be associated with
348 blood pressure status, suggesting that IgG N-glycans may be potential postgenomic
349 biomarkers for hypertension.⁴² Notably, our recent discovery showcased the utility of
350 IgG Gal-ratio, representing the distribution of IgG galactosylation, in evaluating the
351 inflammatory state in patients with chronic thromboembolic pulmonary

352 hypertension.²⁴ These investigations underscored the immense promise of IgG N-
353 glycans as biomarkers for the identification and prognostication of cardiovascular
354 diseases. However, whether IgG N-glycans can be used as prognostic biomarkers for
355 PAH remains to be explored.

356

357 To our knowledge, this is the first IgG N-glycomic study in PAH. Applying a robust
358 method based on high-throughput mass spectrometry, we for the first time identified
359 and validated that plasma IgG Fucosylation informs patients' survival independent of
360 established risk factors. We first screened out the promising candidate prognostic
361 marker IgG Fucosylation in the discovery cohort and validated it in another
362 independent cohort. We then demonstrated that low plasma IgG Fucosylation was
363 robustly associated with an increased risk of death in patients with PAH not only
364 through overall analysis adjusted for potential confounders but also through subgroup
365 analyses. At last, we found that the prognostic IgG Fucosylation improved the clinical
366 risk prediction of the established prognostic risk equation (three-strata model from the
367 SPAHR and COMPERA analyses).^{30,31} This study adopted a rigorous validation
368 scheme as used in other biomarker discovery studies, encompassing the stages of
369 discovery (Beijing cohort), validation (Shanghai cohort), and random sampling
370 analysis (combined cohorts). This comprehensive approach provided robust evidence
371 supporting IgG Fucosylation as a significant prognostic factor in PAH, instilling
372 confidence in the reliability of our findings.

373

374 Registries worldwide have consistently indicated a higher prevalence but better
375 prognosis among female patients with PAH.⁴³ Interestingly, in the present study, we
376 also observed sex-related differences and low IgG Fucosylation appeared to pose a
377 higher risk in men compared to that in women. Furthermore, in our subgroup analysis
378 based on therapeutic strategies, our results demonstrated that baseline IgG
379 Fucosylation effectively distinguished low-risk and high-risk patients, not only within
380 the treatment-naïve and monotherapy subgroup but also within the dual and triple
381 therapy subgroup. Despite the substantial advancements in the modern era of PAH
382 treatment, a specific subset of patients continues to face a bleak prognosis.
383 Remarkably, baseline IgG Fucosylation could still discern this subset of patients with
384 adverse outcomes in the context of dual and triple therapy. However, the previously
385 established three-strata model was less effective in predicting outcomes in modern
386 treatment settings compared to monotherapy or treatment-naïve subgroups (data not
387 shown). One potential explanation is that the current treatments do not target
388 inflammatory pathways associated with IgG Fucosylation. Although modern dual and
389 triple therapies significantly improve patient survival compared to monotherapy or
390 treatment naïve, this improvement is unrelated to systemic-originated IgG
391 Fucosylation. Baseline IgG Fucosylation can still sensitively predict survival, even
392 more so in the dual and triple therapy groups. These findings suggested IgG
393 Fucosylation may not only be a promising prognostic biomarker but also emerge as a
394 potential novel therapeutic target, distinct from existing targets, for patients with PAH.
395

396 In the SPAHR and COMPERA analyses, the majority of patients with PAH were
397 identified as intermediate risk (~60-70%)^{30,31} and similar results were also obtained in
398 our cohorts using the three-strata model they proposed. Identifying high-risk patients
399 is particularly important in the risk assessment at diagnosis.^{44,45} Discriminating the
400 intermediate-high risk group from the intermediate risk group that makes up the
401 majority of the patients may prompt physicians to initiate more aggressive initial
402 treatment strategies which have far-reaching effects on patients' long-term survival.⁴⁴
403 Therefore, a more granular risk stratification is needed for the patients in the
404 intermediate risk group, which is vitally important for therapeutic decisions. Several
405 reports have shown that the use of additional variables improved risk prediction and
406 some groups also proposed the four-strata risk model.^{36,46-48} In the present study, the
407 potential plasma biomarker IgG Fucosylation also achieved promising results with
408 further discrimination within the intermediate risk group. Specifically, the IgG
409 Fucosylation improved discrimination AUC from 0.67 (uninformative test) to 0.70
410 (moderately accurate test) and reclassification of patients in the intermediate risk
411 group into intermediate-high and intermediate-low risk of the three-strata model,
412 suggesting IgG Fucosylation provided added values in the risk stratification of PAH in
413 combination with the established clinical targets.

414

415 Several studies have shown that core fucose on IgG plays a role in the progression of
416 malignant diseases.^{49,50} Functional studies revealed that the lack of core fucose in IgG
417 N-glycome greatly increased the proinflammatory capacity of IgG through increased

418 binding of IgG to Fc γ RIII and enhanced ADCC.^{51,52} Decreased levels of core
419 Fucosylation of IgG N-glycome coincide with increased inflammation in
420 individuals.²⁰ Moreover, in our previous study, we found human plasma IgG N-
421 glycome profiles exhibited a proinflammatory phenotype in chronic thromboembolic
422 pulmonary hypertension and IgG proinflammatory N-glycans may be useful for
423 assessing the occurrence and prognosis of patients with chronic thromboembolic
424 pulmonary hypertension.²⁴ In the present study, decreased levels of IgG Fucosylation
425 were found associated with increased mortality of patients with PAH. Therefore, we
426 speculate that inflammation could be a mediator of the prognostic effect of IgG
427 Fucosylation in patients with PAH, but the potential role of changes in IgG
428 Fucosylation in the development and progression of PAH deserves in-depth
429 exploration in future studies.

430

431 Circulating BNP or NT-proBNP secreted by cardiac myocytes in response to
432 increased ventricle wall strain⁵³ is the only blood biomarker in the established risk
433 calculators. Besides cardiac-originated BNP or NT-proBNP, systemic-originated IgG
434 Fucosylation which is associated with systemic immune and inflammation was found
435 to provide independent values to inform risk stratification in this study. Therefore,
436 plasma biomarkers from different pathways in the pathophysiology of PAH
437 collectively provide more comprehensive information compared to parameters
438 indicating limited mechanisms. On the other hand, though previous studies have
439 reported some new plasma proteins/protein panels may be useful in the risk

440 stratification of PAH, IgG Fucosylation identified in the present study is the first
441 glycomic candidate biomarker for PAH prognosis. Glycomic biomarkers have many
442 advantages over other omic markers. Especially, clinical IgG N-glycosylation analysis
443 does not rely as heavily on mild serum/plasma storage conditions and timely analysis
444 (glycans are even stable at 50 °C for two weeks) as many other omics analyses.⁵⁴ It is
445 worth mentioning that the high-throughput workflow for IgG N-glycome profiling
446 applied in the present study has been widely used in various studies,^{24-27,55} enabling
447 the candidate glycan biomarker to be more convenient for further clinical application.

448

449 **Strengths and limitations**

450 A major advantage of this study is that we, for the first time, reliably identified and
451 validated a novel independent prognostic biomarker plasma IgG Fucosylation for
452 PAH using plasma IgG N-glycomics based on relatively large and independent
453 multicenter PAH cohorts with long-term follow-up. Another strength of our study was
454 that the IgG glycan biomarker is systemic-originated and in different pathways of the
455 pathophysiology of PAH from other established risk factors, which provided added
456 values for the prognostication of patients with PAH. Nonetheless, our study has
457 several limitations. First, only idiopathic and heritable PAH were included in our
458 cohorts. The survival in patients with other types of PAH (caused by other associated
459 conditions such as congenital heart disease, connective tissue diseases, and
460 portopulmonary hypertension) may differ significantly from that of patients with
461 idiopathic or heritable PAH. Therefore, applying the conclusions drawn from this

462 study to other categories of PAH requires extreme caution and the prognostic
463 significance of IgG Fucosylation in other subtypes of PAH will be evaluated in future
464 studies. Second, in the present study, we discovered that decreased levels of IgG
465 Fucosylation were independently associated with an increased risk of death in patients
466 with PAH. Though some functional studies have shown that the absence of core
467 fucose in IgG N-glycome affects inflammatory signaling and immune response
468 outcomes, the mechanisms underlying our findings and the potential role of altered
469 IgG Fucosylation in the development and progression of PAH warrant in-depth
470 investigation. Third, we evaluated the prognostic value of baseline plasma IgG N-
471 glycome profiles in PAH. Future investigations should explore the clinical
472 implications of IgG N-glycome variations in patients undergoing diverse stages of
473 treatment. Last, though the sample size of our cohorts was relatively large, the
474 numbers became small in the subgroups of sensitivity analyses and stratified analyses.
475 The accuracy of IgG Fucosylation in prognostication would be increased with an
476 increased number of samples.

477

478 **Conclusions**

479 Through a comprehensive scheme, we identified and validated a plasma glycomic
480 prognostic biomarker, which is in different pathophysiological pathways from other
481 established risk factors of PAH, to risk stratify patients with PAH.

482

483 **Acknowledgements**

484 Author Contributions

485 Conception and design: ZCJ, ZJZ, CL, WHW, JLM, and CYC; Analysis and
486 interpretation of data: ZJZ, CL, JLM, YPZ, DL, TYL, JHL, SJZ, JSM, RNL, and LW;
487 Drafting of the manuscript: ZJZ and CL; Critical revision of the manuscript for
488 important intellectual content: ZCJ, JLM, DL, and YPZ; Final approval of the
489 manuscript: all authors; Statistical expertise: KS; Obtaining research funding: ZCJ
490 and ZJZ; Acquisition of data: LC, ZJZ, JHL, WHW, CYC, and DL.

491

492 **Sources of funding**

493 This work was supported by grants from the National Key Research and Development
494 Program of China (2022YFC2703902 and 2022YFC2703901), the CAMS Innovation
495 Fund for Medical Sciences (2021-I2M-1-018), National Natural Science Foundation
496 of China (82241020 and 32371506), Natural Science Foundation of Shanghai
497 (22ZR1452400), Pujiang Talent Program (22PJD064), and National High-Level
498 Hospital Clinical Research Funding (2022-PUMCH-B-099 and 2022-PUMCH-A-
499 200).

500

501 **Disclosures**

502 None

503

504 **Supplemental materials**

505 Supplemental methods

506 Supplemental Figure S1

507

508 **References**

- 509 1. Galie N, Humbert M, Vachiery JL, Gibbs S, Lang I, Torbicki A, Simonneau G,
510 Peacock A, Vonk Noordegraaf A, Beghetti M, et al. 2015 ESC/ERS Guidelines
511 for the diagnosis and treatment of pulmonary hypertension: The Joint Task
512 Force for the Diagnosis and Treatment of Pulmonary Hypertension of the
513 European Society of Cardiology (ESC) and the European Respiratory Society
514 (ERS): Endorsed by: Association for European Paediatric and Congenital
515 Cardiology (AEPC), International Society for Heart and Lung Transplantation
516 (ISHLT). *Eur Heart J*. 2016;37:67-119. doi: 10.1093/eurheartj/ehv317
- 517 2. Galie N, Humbert M, Vachiery JL, Gibbs S, Lang I, Torbicki A, Simonneau G,
518 Peacock A, Vonk Noordegraaf A, Beghetti M, et al. 2015 ESC/ERS Guidelines
519 for the diagnosis and treatment of pulmonary hypertension: The Joint Task
520 Force for the Diagnosis and Treatment of Pulmonary Hypertension of the
521 European Society of Cardiology (ESC) and the European Respiratory Society
522 (ERS): Endorsed by: Association for European Paediatric and Congenital
523 Cardiology (AEPC), International Society for Heart and Lung Transplantation
524 (ISHLT). *Eur Respir J*. 2015;46:903-975. doi: 10.1183/13993003.01032-2015
- 525 3. Humbert M, Sitbon O, Chaouat A, Bertocchi M, Habib G, Gressin V, Yaici A,
526 Weitzenblum E, Cordier JF, Chabot F, et al. Survival in patients with
527 idiopathic, familial, and anorexigen-associated pulmonary arterial

- 528 hypertension in the modern management era. *Circulation*. 2010;122:156-163.
529 doi: 10.1161/CIRCULATIONAHA.109.911818
- 530 4. Farber HW, Miller DP, Poms AD, Badesch DB, Frost AE, Muros-Le Rouzic E,
531 Romero AJ, Benton WW, Elliott CG, McGoon MD, et al. Five-Year outcomes
532 of patients enrolled in the REVEAL Registry. *Chest*. 2015;148:1043-1054.
533 doi: 10.1378/chest.15-0300
- 534 5. Benza RL, Miller DP, Barst RJ, Badesch DB, Frost AE, McGoon MD. An
535 evaluation of long-term survival from time of diagnosis in pulmonary arterial
536 hypertension from the REVEAL Registry. *Chest*. 2012;142:448-456. doi:
537 10.1378/chest.11-1460
- 538 6. Pan HM, McClelland RL, Moutchia J, Appleby DH, Fritz JS, Holmes JH,
539 Minhas J, Palevsky HI, Urbanowicz RJ, Kawut SM, et al. Heterogeneity of
540 treatment effects by risk in pulmonary arterial hypertension. *Eur Respir J*.
541 2023;62. doi: 10.1183/13993003.00190-2023
- 542 7. Evans CE, Cober ND, Dai Z, Stewart DJ, Zhao YY. Endothelial cells in the
543 pathogenesis of pulmonary arterial hypertension. *Eur Respir J*. 2021;58. doi:
544 10.1183/13993003.03957-2020
- 545 8. Thenappan T, Ormiston ML, Ryan JJ, Archer SL. Pulmonary arterial
546 hypertension: pathogenesis and clinical management. *BMJ*. 2018;360:j5492.
547 doi: 10.1136/bmj.j5492
- 548 9. Ferrian SP, Cao A, McCaffrey EF, Saito T, Greenwald NF, Nicolls MR, Bruce
549 T, Zamanian RT, Del Rosario P, Rabinovitch M, et al. Single-Cell Imaging

- 550 Maps Inflammatory Cell Subsets to Pulmonary Arterial Hypertension
551 Vasculopathy. *Am J Respir Crit Care Med*. 2023. doi: 10.1164/rccm.202209-
552 1761OC
- 553 10. Hart GW, Copeland RJ. Glycomics hits the big time. *Cell*. 2010;143:672-676.
554 doi: 10.1016/j.cell.2010.11.008
- 555 11. Ohtsubo K, Marth JD. Glycosylation in cellular mechanisms of health and
556 disease. *Cell*. 2006;126:855-867. doi: 10.1016/j.cell.2006.08.019
- 557 12. Memarian E, Heijmans R, Slieker RC, Sierra A, Gornik O, Beulens JWJ,
558 Hanic M, Elders P, Pascual J, Sijbrands E, et al. IgG N-glycans are associated
559 with prevalent and incident complications of type 2 diabetes. *Diabetes Metab*
560 *Res Rev*. 2023;39:e3685. doi: 10.1002/dmrr.3685
- 561 13. Varki A. Biological roles of oligosaccharides: all of the theories are correct.
562 *Glycobiology*. 1993;3:97-130. doi: 10.1093/glycob/3.2.97
- 563 14. Schwab I, Nimmerjahn F. Intravenous immunoglobulin therapy: how does IgG
564 modulate the immune system? *Nat Rev Immunol*. 2013;13:176-189. doi:
565 10.1038/nri3401
- 566 15. Arnold JN, Wormald MR, Sim RB, Rudd PM, Dwek RA. The impact of
567 glycosylation on the biological function and structure of human
568 immunoglobulins. *Annu Rev Immunol*. 2007;25:21-50. doi:
569 10.1146/annurev.immunol.25.022106.141702
- 570 16. Simurina M, de Haan N, Vuckovic F, Kennedy NA, Stambuk J, Falck D,
571 Trbojevic-Akmacic I, Clerc F, Razdorov G, Khon A, et al. Glycosylation of

- 572 Immunoglobulin G Associates With Clinical Features of Inflammatory Bowel
573 Diseases. *Gastroenterology*. 2018;154:1320-1333 e1310. doi:
574 10.1053/j.gastro.2018.01.002
- 575 17. Jefferis R. Glycosylation as a strategy to improve antibody-based therapeutics.
576 *Nat Rev Drug Discov*. 2009;8:226-234. doi: 10.1038/nrd2804
- 577 18. Pucic M, Knezevic A, Vidic J, Adamczyk B, Novokmet M, Polasek O, Gornik
578 O, Supraha-Goreta S, Wormald MR, Redzic I, et al. High throughput isolation
579 and glycosylation analysis of IgG-variability and heritability of the IgG
580 glycome in three isolated human populations. *Mol Cell Proteomics*.
581 2011;10:M111 010090. doi: 10.1074/mcp.M111.010090
- 582 19. Scanlan CN, Burton DR, Dwek RA. Making autoantibodies safe. *Proc Natl*
583 *Acad Sci U S A*. 2008;105:4081-4082. doi: 10.1073/pnas.0801192105
- 584 20. Freidin MB, Keser T, Gudelj I, Stambuk J, Vucenovic D, Allegri M, Pavic T,
585 Simurina M, Fabiane SM, Lauc G, et al. The Association Between Low Back
586 Pain and Composition of IgG Glycome. *Sci Rep*. 2016;6:26815. doi:
587 10.1038/srep26815
- 588 21. Davies J, Jiang L, Pan LZ, LaBarre MJ, Anderson D, Reff M. Expression of
589 GnTIII in a recombinant anti-CD20 CHO production cell line: Expression of
590 antibodies with altered glycoforms leads to an increase in ADCC through
591 higher affinity for FC gamma RIII. *Biotechnol Bioeng*. 2001;74:288-294.
- 592 22. Mihai S, Nimmerjahn F. The role of Fc receptors and complement in
593 autoimmunity. *Autoimmun Rev*. 2013;12:657-660. doi:

- 594 10.1016/j.autrev.2012.10.008
- 595 23. Karsten CM, Pandey MK, Figge J, Kilchenstein R, Taylor PR, Rosas M,
596 McDonald JU, Orr SJ, Berger M, Petzold D, et al. Anti-inflammatory activity
597 of IgG1 mediated by Fc galactosylation and association of FcγRIIB and
598 dectin-1. *Nat Med.* 2012;18:1401-1406. doi: 10.1038/nm.2862
- 599 24. Zhang ZJ, Wang HF, Lian TY, Zhou YP, Xu XQ, Guo F, Wei YP, Li JY, Sun K,
600 Liu C, et al. Human Plasma IgG N-Glycome Profiles Reveal a
601 Proinflammatory Phenotype in Chronic Thromboembolic Pulmonary
602 Hypertension. *Hypertension.* 2023;80:1929-1939. doi:
603 10.1161/HYPERTENSIONAHA.123.21408
- 604 25. Ren S, Zhang Z, Xu C, Guo L, Lu R, Sun Y, Guo J, Qin R, Qin W, Gu J.
605 Distribution of IgG galactosylation as a promising biomarker for cancer
606 screening in multiple cancer types. *Cell Res.* 2016;26:963-966. doi:
607 10.1038/cr.2016.83
- 608 26. Qian Y, Wang Y, Zhang X, Zhou L, Zhang Z, Xu J, Ruan Y, Ren S, Xu C, Gu
609 J. Quantitative analysis of serum IgG galactosylation assists differential
610 diagnosis of ovarian cancer. *J Proteome Res.* 2013;12:4046-4055. doi:
611 10.1021/pr4003992
- 612 27. Zhang Z, Wu J, Liu P, Kang L, Xu X. Diagnostic Potential of Plasma IgG N-
613 glycans in Discriminating Thyroid Cancer from Benign Thyroid Nodules and
614 Healthy Controls. *Front Oncol.* 2021;11:658223. doi:
615 10.3389/fonc.2021.658223

- 616 28. Reiding KR, Blank D, Kuijper DM, Deelder AM, Wuhrer M. High-throughput
617 profiling of protein N-glycosylation by MALDI-TOF-MS employing linkage-
618 specific sialic acid esterification. *Anal Chem.* 2014;86:5784-5793. doi:
619 10.1021/ac500335t
- 620 29. Clerc F, Reiding KR, Jansen BC, Kammeijer GS, Bondt A, Wuhrer M. Human
621 plasma protein N-glycosylation. *Glycoconj J.* 2016;33:309-343. doi:
622 10.1007/s10719-015-9626-2
- 623 30. Kylhammar D, Kjellstrom B, Hjalmarsson C, Jansson K, Nisell M, Soderberg
624 S, Wikstrom G, Radegran G. A comprehensive risk stratification at early
625 follow-up determines prognosis in pulmonary arterial hypertension. *Eur Heart*
626 *J.* 2018;39:4175-4181. doi: 10.1093/eurheartj/ehx257
- 627 31. Hoeper MM, Kramer T, Pan Z, Eichstaedt CA, Spiesshoefer J, Benjamin N,
628 Olsson KM, Meyer K, Vizza CD, Vonk-Noordegraaf A, et al. Mortality in
629 pulmonary arterial hypertension: prediction by the 2015 European pulmonary
630 hypertension guidelines risk stratification model. *Eur Respir J.* 2017;50. doi:
631 10.1183/13993003.00740-2017
- 632 32. Perkins NJ, Schisterman EF. The Youden Index and the optimal cut-point
633 corrected for measurement error. *Biom J.* 2005;47:428-441. doi:
634 10.1002/bimj.200410133
- 635 33. Boucly A, Weatherald J, Savale L, Jais X, Cottin V, Prevot G, Picard F, de
636 Groote P, Jevnikar M, Bergot E, et al. Risk assessment, prognosis and
637 guideline implementation in pulmonary arterial hypertension. *Eur Respir J.*

- 638 2017;50. doi: 10.1183/13993003.00889-2017
- 639 34. Kylhammar D, Hjalmarsson C, Hesselstrand R, Jansson K, Kavianipour M,
640 Kjellstrom B, Nisell M, Soderberg S, Radegran G. Predicting mortality during
641 long-term follow-up in pulmonary arterial hypertension. *ERJ Open Res.*
642 2021;7. doi: 10.1183/23120541.00837-2020
- 643 35. Benza RL, Kanwar MK, Raina A, Scott JV, Zhao CL, Selej M, Elliott CG,
644 Farber HW. Development and Validation of an Abridged Version of the
645 REVEAL 2.0 Risk Score Calculator, REVEAL Lite 2, for Use in Patients With
646 Pulmonary Arterial Hypertension. *Chest.* 2021;159:337-346. doi:
647 10.1016/j.chest.2020.08.2069
- 648 36. Hoeper MM, Pausch C, Olsson KM, Huscher D, Pittrow D, Grunig E, Staehler
649 G, Vizza CD, Gall H, Distler O, et al. COMPERA 2.0: a refined four-stratum
650 risk assessment model for pulmonary arterial hypertension. *Eur Respir J.*
651 2022;60. doi: 10.1183/13993003.02311-2021
- 652 37. Rhodes CJ, Wharton J, Ghataorhe P, Watson G, Girerd B, Howard LS, Gibbs
653 JSR, Condliffe R, Elliot CA, Kiely DG, et al. Plasma proteome analysis in
654 patients with pulmonary arterial hypertension: an observational cohort study.
655 *Lancet Respir Med.* 2017;5:717-726. doi: 10.1016/S2213-2600(17)30161-3
- 656 38. Rhodes CJ, Wharton J, Swietlik EM, Harbaum L, Girerd B, Coghlan JG,
657 Lordan J, Church C, Pepke-Zaba J, Toshner M, et al. Using the Plasma
658 Proteome for Risk Stratifying Patients with Pulmonary Arterial Hypertension.
659 *Am J Respir Crit Care Med.* 2022;205:1102-1111. doi: 10.1164/rccm.202105-

- 660 1118OC
- 661 39. Amsallem M, Sweatt AJ, Arthur Ataam J, Guihaire J, Lecerf F, Lambert M,
662 Ghigna MR, Ali MK, Mao Y, Fadel E, et al. Targeted proteomics of right heart
663 adaptation to pulmonary arterial hypertension. *Eur Respir J.* 2021;57. doi:
664 10.1183/13993003.02428-2020
- 665 40. Humbert M, Kovacs G, Hoeper MM, Badagliacca R, Berger RMF, Brida M,
666 Carlsen J, Coats AJS, Escribano-Subias P, Ferrari P, et al. 2022 ESC/ERS
667 Guidelines for the diagnosis and treatment of pulmonary hypertension. *Eur*
668 *Heart J.* 2022;43:3618-3731. doi: 10.1093/eurheartj/ehac237
- 669 41. Menni C, Gudelj I, Macdonald-Dunlop E, Mangino M, Zierer J, Besic E, Joshi
670 PK, Trbojevic-Akmacic I, Chowienczyk PJ, Spector TD, et al. Glycosylation
671 Profile of Immunoglobulin G Is Cross-Sectionally Associated With
672 Cardiovascular Disease Risk Score and Subclinical Atherosclerosis in Two
673 Independent Cohorts. *Circ Res.* 2018;122:1555-1564. doi:
674 10.1161/CIRCRESAHA.117.312174
- 675 42. Gao Q, Dolikun M, Stambuk J, Wang H, Zhao F, Yiliham N, Wang Y,
676 Trbojevic-Akmacic I, Zhang J, Fang H, et al. Immunoglobulin G N-Glycans as
677 Potential Postgenomic Biomarkers for Hypertension in the Kazakh Population.
678 *OMICS.* 2017;21:380-389. doi: 10.1089/omi.2017.0044
- 679 43. Cheron C, McBride SA, Antigny F, Girerd B, Chouchana M, Chaumais MC,
680 Jais X, Bertoletti L, Sitbon O, Weatherald J, et al. Sex and gender in
681 pulmonary arterial hypertension. *Eur Respir Rev.* 2021;30. doi:

- 682 10.1183/16000617.0330-2020
- 683 44. Boucly A, Savale L, Jais X, Bauer F, Bergot E, Bertoletti L, Beurnier A,
684 Bourdin A, Bouvaist H, Bulifon S, et al. Association between Initial Treatment
685 Strategy and Long-Term Survival in Pulmonary Arterial Hypertension. *Am J*
686 *Respir Crit Care Med.* 2021;204:842-854. doi: 10.1164/rccm.202009-3698OC
- 687 45. Galie N, Channick RN, Frantz RP, Grunig E, Jing ZC, Moiseeva O, Preston
688 IR, Pulido T, Safdar Z, Tamura Y, et al. Risk stratification and medical therapy
689 of pulmonary arterial hypertension. *Eur Respir J.* 2019;53. doi:
690 10.1183/13993003.01889-2018
- 691 46. Harbaum L, Fuge J, Kamp JC, Hennigs JK, Simon M, Sinning C, Oqueka T,
692 Grimminger J, Olsson KM, Hoeper MM, et al. Blood carbon dioxide tension
693 and risk in pulmonary arterial hypertension. *Int J Cardiol.* 2020;318:131-137.
694 doi: 10.1016/j.ijcard.2020.06.069
- 695 47. Weatherald J, Boucly A, Chemla D, Savale L, Peng M, Jevnikar M, Jais X,
696 Taniguchi Y, O'Connell C, Parent F, et al. Prognostic Value of Follow-Up
697 Hemodynamic Variables After Initial Management in Pulmonary Arterial
698 Hypertension. *Circulation.* 2018;137:693-704. doi:
699 10.1161/CIRCULATIONAHA.117.029254
- 700 48. Yogeswaran A, Richter MJ, Sommer N, Ghofrani HA, Seeger W, Tello K, Gall
701 H. Advanced risk stratification of intermediate risk group in pulmonary
702 arterial hypertension. *Pulm Circ.* 2020;10:2045894020961739. doi:
703 10.1177/2045894020961739

- 704 49. Liu S, Cheng L, Fu Y, Liu BF, Liu X. Characterization of IgG N-glycome
705 profile in colorectal cancer progression by MALDI-TOF-MS. *J Proteomics*.
706 2018;181:225-237. doi: 10.1016/j.jprot.2018.04.026
- 707 50. Pan H, Wu Z, Zhang H, Zhang J, Liu Y, Li Z, Feng W, Wang G, Liu Y, Zhao
708 D, et al. Identification and validation of IgG N-glycosylation biomarkers of
709 esophageal carcinoma. *Front Immunol*. 2023;14:981861. doi:
710 10.3389/fimmu.2023.981861
- 711 51. Lu J, Chu J, Zou Z, Hamacher NB, Rixon MW, Sun PD. Structure of
712 FcγRI in complex with Fc reveals the importance of glycan recognition
713 for high-affinity IgG binding. *Proc Natl Acad Sci U S A*. 2015;112:833-838.
714 doi: 10.1073/pnas.1418812112
- 715 52. Shields RL, Lai J, Keck R, O'Connell LY, Hong K, Meng YG, Weikert SH,
716 Presta LG. Lack of fucose on human IgG1 N-linked oligosaccharide improves
717 binding to human FcγRIII and antibody-dependent cellular toxicity. *J*
718 *Biol Chem*. 2002;277:26733-26740. doi: 10.1074/jbc.M202069200
- 719 53. Goetze JP, Bruneau BG, Ramos HR, Ogawa T, de Bold MK, de Bold AJ.
720 Cardiac natriuretic peptides. *Nat Rev Cardiol*. 2020;17:698-717. doi:
721 10.1038/s41569-020-0381-0
- 722 54. Amez Martin M, Wuhler M, Falck D. Serum and Plasma Immunoglobulin G
723 Fc N-Glycosylation Is Stable during Storage. *J Proteome Res*. 2021;20:2935-
724 2941. doi: 10.1021/acs.jproteome.1c00148
- 725 55. Qin W, Pei H, Qin R, Zhao R, Han J, Zhang Z, Dong K, Ren S, Gu J.

726 Alteration of Serum IgG Galactosylation as a Potential Biomarker for

727 Diagnosis of Neuroblastoma. *J Cancer*. 2018;9:906-913. doi:

728 10.7150/jca.22014

729

730 **Table 1.** Baseline characteristics.

	Discovery Cohort (n = 273)	Validation Cohort (n = 349)
Recruitment period	2013-2020	2006-2013
Age, y	32.8 ± 10.4	35.9 ± 16.8
Male, n (%)	58 (21.2)	109 (31.2)
Ethnic origin	Asian	Asian
IPAH/HPAH, n (%)	259/14 (94.9/5.1)	338/11 (96.8/3.2)
WHO FC, n (%)		
I	7 (2.8)	6 (1.8)
II	103 (41.2)	107 (32.7)
III	124 (49.6)	199 (60.9)
IV	16 (6.4)	15 (4.6)
6MWD, m	416.8 ± 103.0	377.4 ± 116.7
NT-proBNP, pg/mL	941.0 (230.5–2,212.0)	881.0 (289.0–1,944.0)
RAP, mm Hg	8.4 ± 6.0	8.0 ± 5.5
mPAP, mm Hg	58.8 ± 15.6	61.4 ± 14.6
PAWP, mm Hg	9.5 ± 2.9	8.3 ± 3.3
PVR, Wood units	13.2 ± 6.1	15.4 ± 7.8
Cardiac index, L/min/kg/m ²	2.5 ± 0.7	2.5 ± 0.9
Cardiac output, L/min	4.2 ± 1.3	4.0 ± 1.5
SvO ₂ , %	65.5 ± 9.1	62.4 ± 10.8
Three-strata risk (I/II/III), n (%)	88/138/30 (33.1/55.6/11.3)	96/206/37 (28.5/60.5/11.0)
Targeted therapy, n (%)		
Treatment naive	11 (4.0)	66 (18.9)
Monotherapy	80 (29.3)	227 (65.0)
Dual therapy	148 (54.2)	53 (15.2)
Triple therapy	34 (12.5)	3 (0.9)

731 6MWD = 6-minute walking distance; HPAH = heritable pulmonary arterial

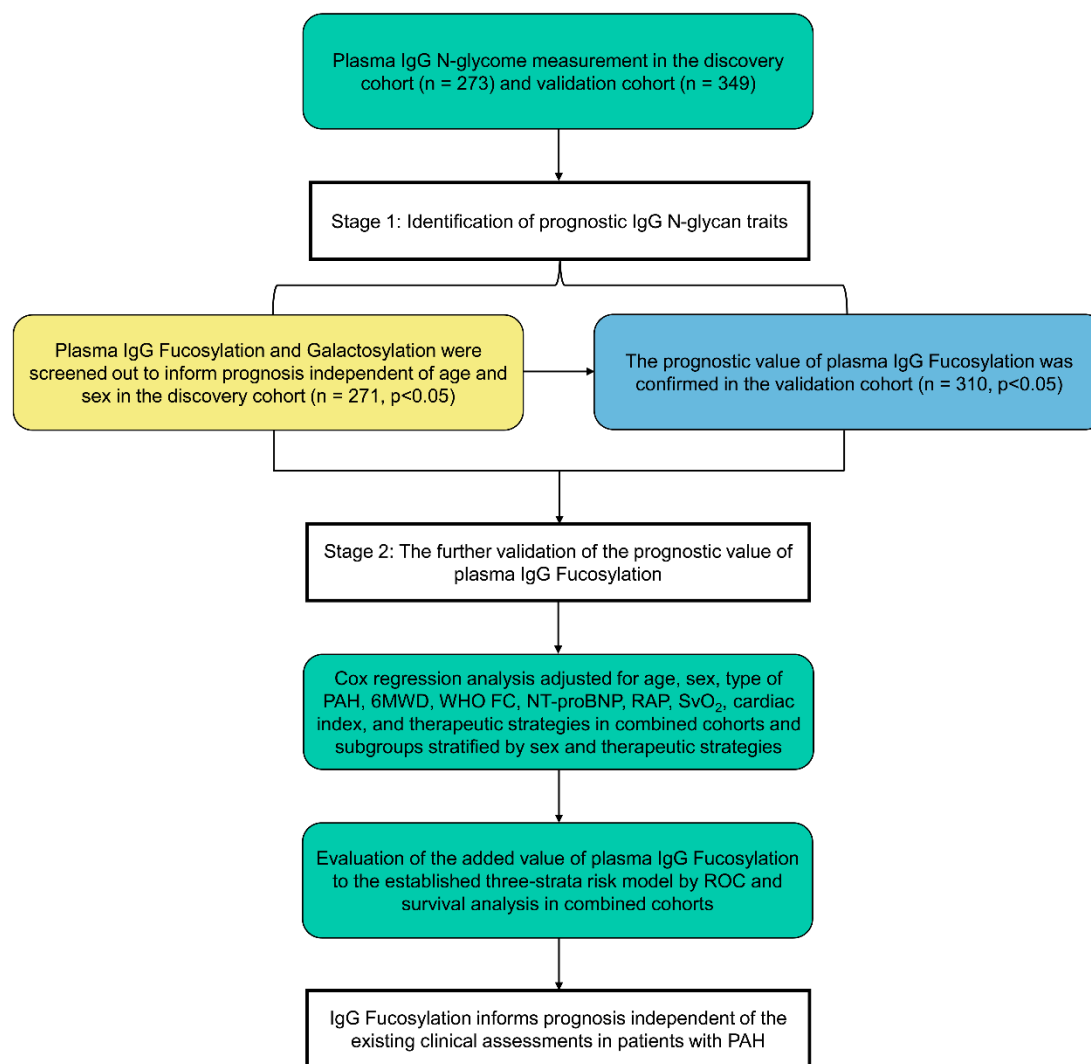
732 hypertension; IPAH = idiopathic pulmonary arterial hypertension; mPAP = mean
733 pulmonary artery pressure; NT-proBNP = N-terminal pro-B-type natriuretic peptide;
734 PAWP = pulmonary artery wedge pressure; PVR = pulmonary vascular resistance;
735 RAP= right atrial pressure; SvO₂ = mixed venous oxygen saturation; WHO FC = World
736 Health Organization functional class.

737 **Table 2.** Results of Cox proportional hazards models examining the relationship between plasma IgG Fucosylation and risk of all-cause death in
 738 overall analysis and subgroup analyses according to sex and therapeutic strategies.

	Unadjusted		Fully-adjusted		<i>P</i> for interaction
	HR (95%CI)	<i>P</i> value	HR (95%CI)	<i>P</i> value	
Total (n = 581)	0.451 (0.292-0.696)	<0.001	0.490 (0.315-0.763)	0.002	
Sex					0.748
Male (n = 155)	0.332 (0.154-0.715)	0.005	0.387 (0.159-0.941)	0.035	
Female (n = 426)	0.510 (0.301-0.863)	0.012	0.527 (0.307-0.906)	0.014	
Therapy					0.410
Treatment naïve and monotherapy (n = 373)	0.503 (0.304-0.834)	0.008	0.570 (0.340-0.953)	0.032	
Dual and triple therapy (n = 208)	0.340 (0.144-0.805)	0.014	0.376 (0.148-0.954)	0.043	

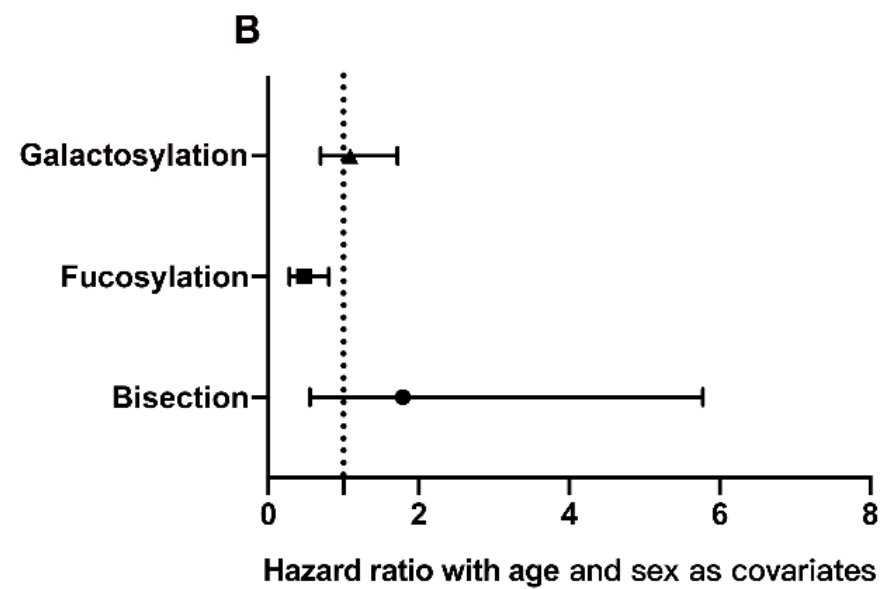
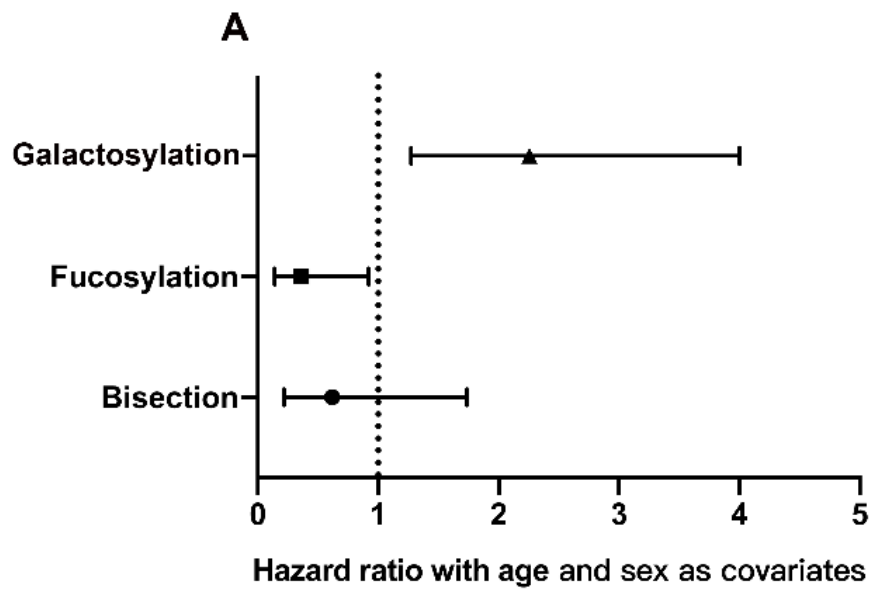
739 The factors in the fully-adjusted models included age, sex, WHO-FC, 6MWD, NT-proBNP, RAP, SvO₂, PVR, cardiac index, type of PAH, and
 740 therapeutic strategies. The factors in the fully-adjusted models included age, sex, WHO-FC, 6MWD, NT-proBNP, RAP, SvO₂, PVR, cardiac
 741 index, type of PAH, and therapeutic strategies. 6MWD = 6-minute walking distance; NT-proBNP = N-terminal pro-B-type natriuretic peptide;
 742 PAH = pulmonary arterial hypertension. PVR = pulmonary vascular resistance; RAP = right atrial pressure; SvO₂ = mixed venous oxygen
 743 saturation; WHO FC = World Health Organization functional class.

744 **Figures**



745

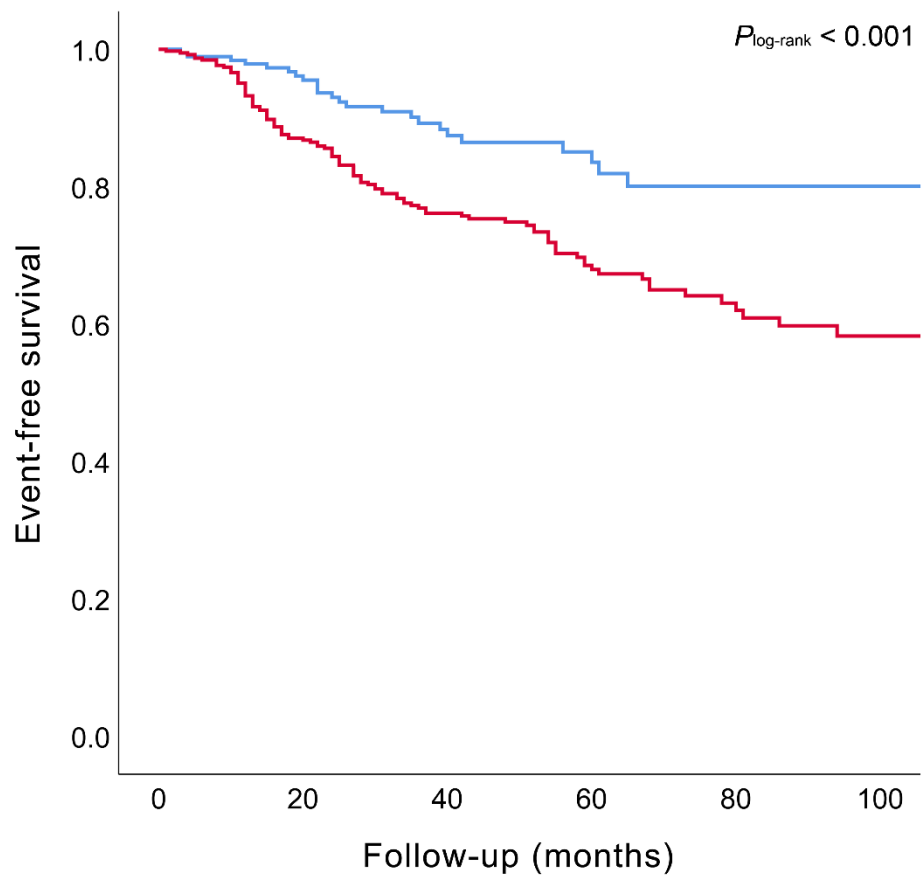
746 **Figure1.** Study design. 6MWD = 6-minute walking distance; NT-proBNP = N-
747 terminal pro-B-type natriuretic peptide; PAH = pulmonary arterial hypertension. PVR
748 = pulmonary vascular resistance; RAP = right atrial pressure; ROC = receiver-
749 operating characteristic; SvO₂ = mixed venous oxygen saturation; WHO FC = World
750 Health Organization functional class.



751

752 **Figure 2.** Hazard ratios and 95% CI from Cox regression analysis evaluating the prognostic IgG N-glycan traits in the discovery and validation

753 cohorts.



Patients at risk (n)

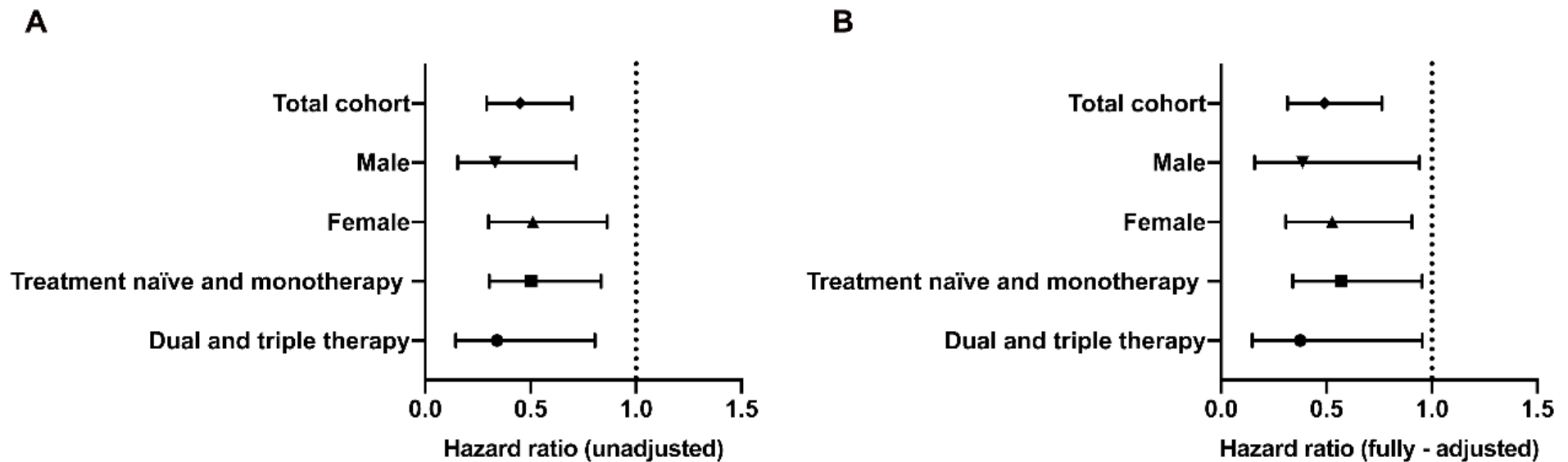
High Fuc	191	157	96	56	31	17
Low Fuc	390	309	194	114	59	35

754

755 **Figure 3.** Kaplan-Meier survival curve for all-cause death stratified by IgG

756 Fucosylation in patients with pulmonary artery hypertension. “High Fuc” or “Low

757 Fuc” represents IgG Fucosylation higher or lower than 0.9741.



758

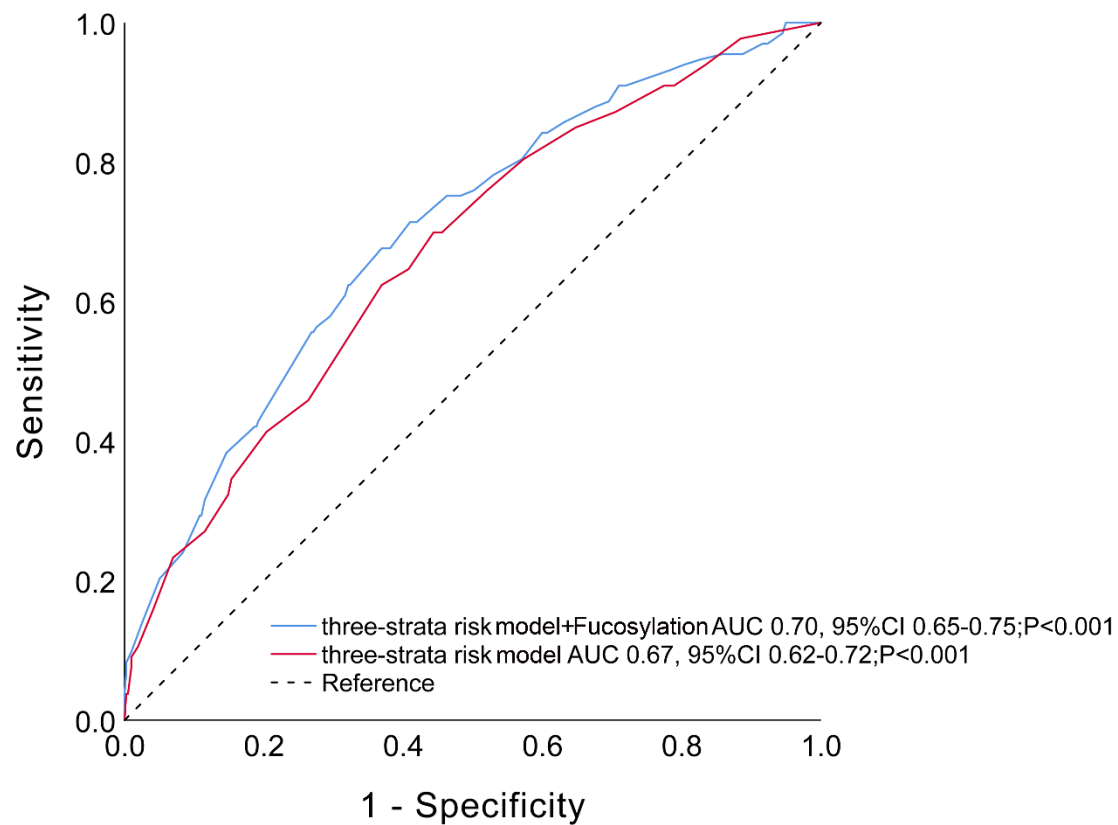
759 **Figure 4.** Hazard ratios and 95% CI from Cox regression analysis evaluating the IgG Fucosylation in combined cohorts and subgroup analyses

760 (A) without adjustment, and (B) with full adjustment. The factors in the fully-adjusted models included age, sex, WHO-FC, 6MWD, NT-

761 proBNP, RAP, SvO₂, PVR, cardiac index, type of PAH, and therapeutic strategies. 6MWD = 6-minute walking distance; NT-proBNP = N-

762 terminal pro-B-type natriuretic peptide; PAH = pulmonary arterial hypertension. PVR = pulmonary vascular resistance; RAP = right atrial

763 pressure; SvO₂ = mixed venous oxygen saturation; WHO FC = World Health Organization functional class.



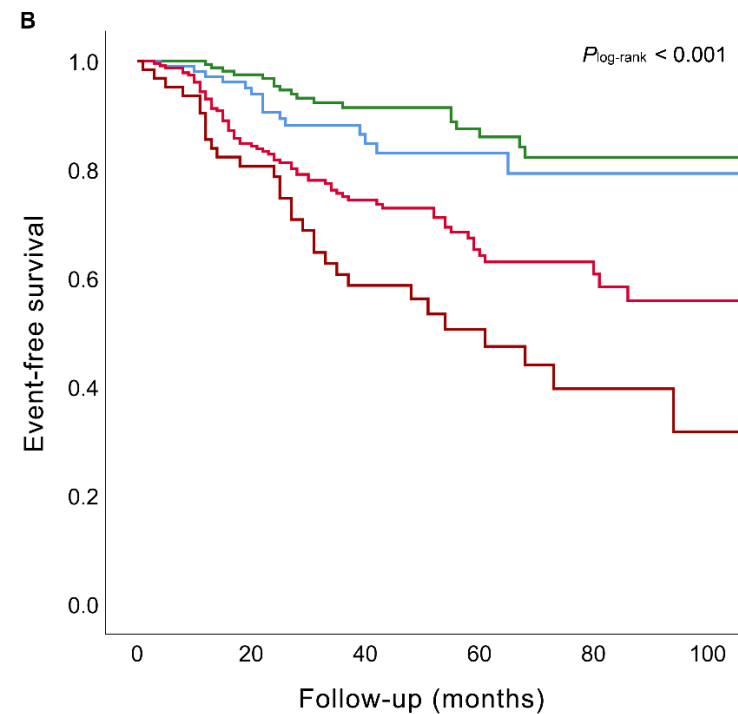
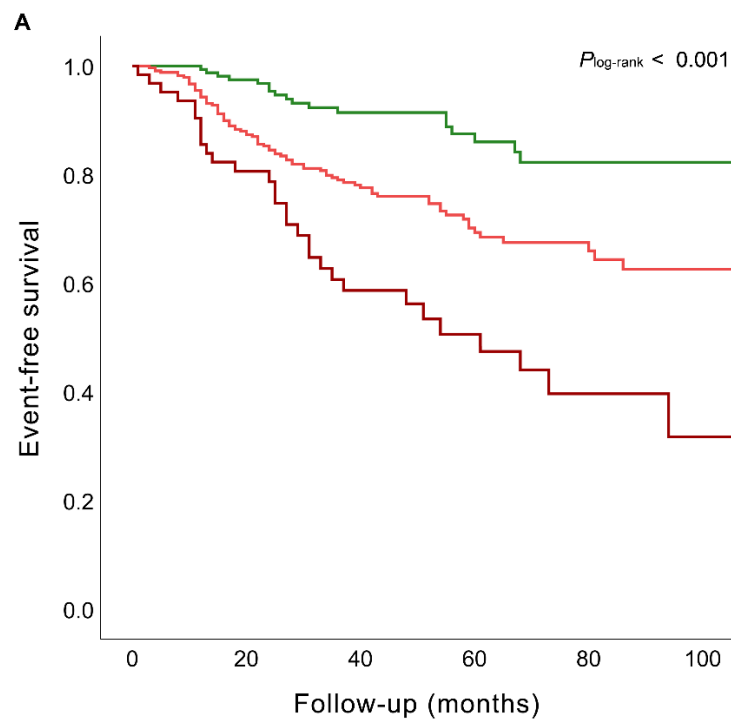
764

1 - Specificity

765 **Figure 5.** The performance of the established three-strata model (from the SPAHR

766 and COMPERA analyses) before and after the addition of IgG Fucosylation evaluated

767 by receiver-operating characteristic analysis. AUC = area under the curve.



Patients at risk (n)						
Low risk	170	146	92	59	35	24
Intermediate	336	263	159	86	45	24
High risk	63	46	29	18	7	2

Patients at risk (n)						
Low risk	170	146	92	59	35	24
Intermediate-low risk	105	86	51	26	17	8
Intermediate-high risk	231	177	108	60	28	16
High risk	63	46	29	18	7	2

768

769 **Figure 6.** Kaplan-Meier survival curve for all-cause death stratified by the established three-strata model (from the SPAHR and COMPERA

770 analyses) (A) before and (B) after the addition of IgG Fucosylation in patients with pulmonary artery hypertension.