

# Inflammatory dietary potential is associated with vitamin depletion and gut microbial dysbiosis in early pregnancy.

Suzanne A. Alvernaz<sup>1</sup>; Elizabeth S. Wenzel<sup>2</sup>; Unnathi Nagelli<sup>1</sup>; Lacey B. Pezley<sup>3</sup>; Bazil LaBomascus<sup>3</sup>; Jack A. Gilbert<sup>4,5</sup>; Pauline M. Maki<sup>2,6,7</sup>; Lisa Tussing-Humphreys<sup>3\*</sup>; Beatriz Peñalver Bernabé<sup>1,8,\*,\*\*</sup>

<sup>1</sup> Department of Biomedical Engineering, University of Illinois, Chicago, IL, USA;

<sup>2</sup> Department of Psychology, University of Illinois, Chicago, IL, USA;

<sup>3</sup> Department of Kinesiology and Nutrition, University of Illinois, Chicago, IL, USA;

<sup>4</sup> Department of Pediatrics, University of California, San Diego, CA, USA;

<sup>5</sup> Scripps Oceanographic Institute, University of California, San Diego, CA, USA;

<sup>6</sup> Department of Psychiatry, University of Illinois, Chicago, IL, USA;

<sup>7</sup> Department of Obstetrics and Gynecology, University of Illinois, Chicago, IL, USA;

<sup>8</sup> Center for Bioinformatics and Quantitative Biology, University of Illinois, Chicago, IL, USA;

*\*Senior authors*

## Sources of Support:

R03HD095056

1U24DK131617-01 (JAG)

K12HD101373 (BPB)

Arnold O. Beckman Postdoctoral Fellowship (BPB)

NARSAD Young Investigator Award, Brain and Behavior Research Foundation (BPB)

University of Illinois Medical Scientist Training Program (SAA)

**\*\* Correspondence:** Beatriz Peñalver Bernabé (851 S Morgan St. Chicago, IL 60607, (312)-996-5624, [penalver@uic.edu](mailto:penalver@uic.edu))

## Abbreviations:

DHQ-II, Diet History Questionnaire II

DII, Dietary Inflammatory Index

FFQ, Food Frequency Questionnaire

1 **Abstract**

2 **Background:** Pregnancy alters many physiological systems, including the maternal gut  
3 microbiota. Diet is a key regulator of this system and can alter the host immune system  
4 to promote inflammation. Multiple perinatal disorders have been associated with  
5 inflammation, maternal metabolic alterations, and gut microbial dysbiosis, including  
6 gestational diabetes mellitus, preeclampsia, preterm birth, and mood disorders.  
7 However, the effects of high inflammatory diets on the gut microbiota during pregnancy  
8 have yet to be fully explored.

9  
10 **Objective:** To use a systems-based approach to characterize associations among  
11 dietary inflammatory potential, a measure of diet quality, and the gut microbiome during  
12 pregnancy.

13  
14 **Methods:** Forty-nine pregnant persons were recruited prior to 16 weeks of gestation.  
15 Participants completed a food frequency questionnaire (FFQ) and provided fecal  
16 samples. Dietary inflammatory potential was assessed using the Dietary Inflammatory  
17 Index (DII) from FFQ data. Fecal samples were analyzed using 16S rRNA amplicon  
18 sequencing. Differential taxon abundance with respect to DII score were identified, and  
19 microbial metabolic potential was predicted using PICRUST2.

20  
21 **Results:** Inflammatory diets were associated with decreased vitamin and mineral intake  
22 and dysbiotic gut microbiota structure and predicted metabolism. Gut microbial  
23 compositional differences revealed a decrease in short chain fatty acid producers such

24 as *Faecalibacterium*, and an increase in predicted vitamin B12 synthesis, methylglyoxal  
25 detoxification, galactose metabolism and multi drug efflux systems in pregnant  
26 individuals with increased DII scores.

27 **Conclusions:** Dietary inflammatory potential was associated with a reduction in the  
28 consumption of vitamins & minerals and predicted gut microbiota metabolic  
29 dysregulation.

30

- 31 **Key Words:** Diet, inflammation, pregnancy, gut microbiota, Dietary Inflammatory Index,  
32 galactose, food frequency questionnaire.

### 33 **Introduction**

34 In pregnancy, an under or over supply of nutrients can have deleterious impacts on both  
35 maternal and fetal health. For instance, lack of adequate folic acid intake during  
36 pregnancy is one of the leading causes of neural tube defects during fetal development  
37 (1). Similarly, iron utilization increases during the course of pregnancy, and inadequate  
38 supply is associated with poor fetal outcomes, including intrauterine growth restriction  
39 and low birth weight (2). Conversely, oversupply of dietary nutrients, including  
40 carbohydrates and saturated fats, common in Western diets, are associated with  
41 chronic inflammation and can lead to obstetric complications, from gestational diabetes  
42 mellitus (GDM) (3,4) to preterm birth (5). This is especially important for minoritized  
43 women of color who may have poor nutritional intake due to structural inequalities  
44 (6,7,8) and consequently, higher burden of adverse pregnancy outcomes (9). Thus,  
45 understanding the pro-inflammatory nature of diets could serve to reduce negative  
46 obstetrics and delivery outcomes (10).

47  
48 Diet is a major regulator of the gut microbiota (11,12). The gut microbiota encompasses  
49 the bacteria, fungi, viruses, and protists living inside the human gastrointestinal tract. It  
50 is estimated that the combined genomes of all gut bacteria comprise >5 million genes  
51 (13), with the potential to metabolize a vast number of different substrates. Over or  
52 under supply of dietary nutrients (such as fats or fiber) can provide competitive  
53 advantages or disadvantages for different gut microbial species based on their  
54 individual metabolic capabilities (14,15). The dynamic nature of pregnancy alters almost  
55 every system in the body, including the maternal gut microbiota (16) and immune

56 system (17), which adapts in a tightly regulated clock to maintain immune protection of  
57 the mother while simultaneously avoiding autoimmune rejection of the growing fetus  
58 (17,18). The structure of the gut microbiota changes as the pregnancy progresses (19-  
59 21). In fact, transplantation of gut microbiota from pregnant individuals into germ-free  
60 animals, renders common pregnancy phenotypes of obesity, insulin resistance (19,22),  
61 and adaptations in immunity (23). Poor diet quality leading to a pro-inflammatory state  
62 can alter the normal dynamic changes of the gut microbiota (14) and immune system  
63 during pregnancy (24), increasing risk of common perinatal complications, including  
64 GDM (25), iron deficiency (26), and mood disorders (27). It is thus essential to  
65 understand how maternal diet quality during pregnancy impacts the gut microbiota.

66  
67 The Dietary Inflammatory Index (DII) is a literature-derived population-based index to  
68 quantify the inflammatory potential of diets among diverse populations (28). The Index  
69 was developed by leveraging global dietary studies to assign inflammatory effect scores  
70 (S) to common dietary nutrients based on their ability to increase or decrease pro-  
71 inflammatory biomarkers, such as cytokines IL-1 $\beta$ , IL-4, IL-6, and IL-10 (28-30).  
72 Previous studies have shown DII is positively associated with inflammatory markers  
73 during pregnancy (31), increased rates of cesarean delivery in obese mothers (32) and  
74 decreased fetal growth (33). Furthermore, DII has also been negatively linked with  
75 microorganisms that produce short-chain fatty acids (SCFAs), which are beneficial anti-  
76 inflammatory metabolites (34-37). Thus, the normal gut microbial compositional  
77 changes occurring during the gestational period may be negatively altered by poor diet

78 quality, which could be assessed by the DII score, and may mediate obstetric  
79 complications.

80

81 Dysbiosis refers to the imbalance in the gut microbiota, where the equilibrium between  
82 beneficial and harmful microorganisms is disrupted by factors such as poor diet,  
83 antibiotics, or illness (25). Microbial dysregulation, closely related to dysbiosis,  
84 describes when the regulation of these microbial populations is disturbed, leading to  
85 health issues (27) which can manifest as an impaired immune response or altered  
86 metabolic processes (21). Both dysbiosis and microbial dysregulation are crucial  
87 concepts in understanding conditions like obesity and gestational diabetes, where the  
88 gut microbiota plays a significant role in disease progression or mitigation (21).  
89 Understanding how diet regulates the gut microbiota during pregnancy could potentially  
90 lead to avenues of early interventions to reduce risk of pregnancy comorbidities  
91 associated with systemic inflammation. Here, we aim to assess the relationship  
92 between dietary inflammatory potential and the maternal gut microbiota during the first  
93 trimester of pregnancy in a cohort mostly composed of minoritized women of color living  
94 in a large diverse urban community in the United States.

95

## 96 **Methods**

### 97 **Participant Recruitment**

98 This work is a secondary data analysis of a longitudinal cohort study (MoMent) in which  
99 participants were recruited from the outpatient obstetrics clinics at a public university  
100 hospital, the University of Illinois Chicago (Chicago, IL, USA), from 2018 to 2020 (38).

101 This study was approved by the University of Illinois Chicago Institutional Review Board  
102 (IRB #2014-0325). Written informed consent was obtained prior to study enrollment and  
103 sample collection. To be eligible for the study, participants had to be less than 16 weeks  
104 pregnant and English speaking. Women were excluded for the following criteria: less  
105 than 18 or over 64 years of age, current multi-gestational pregnancy, a prior history of  
106 gastrointestinal surgeries, oral antibiotic, antiviral, or antifungal use in the last 6 months,  
107 use of medication or supplements to treat any chronic disorder (e.g., diabetes,  
108 hypertension, mood disorders), history of substance abuse (excluding marijuana,  
109 alcohol and tobacco, self-report) within the last 6 months, use of *in vitro* fertilization  
110 treatments for current pregnancy, active diagnosis of cancer, HIV or eating disorders or  
111 chronic diarrhea within the last 6 months. For this secondary study, we selected  
112 participants who completed a diet food frequency questionnaire before 28 gestational  
113 weeks and provided a fecal sample at their first study visit (< 16 gestational weeks),  
114 rendering a total of 49 subjects.

### 115 **Stool Collection**

116 Study participants self-collected rectal swabs (n=44), avoiding touching the rectal tissue,  
117 or provided stool samples (n=5) for gut microbiota assessment. Stool samples were  
118 homogenized and aliquoted in cryogenic vials. Rectal swabs and aliquoted stool  
119 samples were stored at -80°C before being sent for 16S rRNA amplicon sequencing.  
120 Biological samples were collected with an average estimated gestational age of  $10.9 \pm 3$   
121 weeks.

### 122 **Dietary Assessment**



123 Participants completed one of two validated FFQs: Vioscreen (n=25) (39) or the Diet  
124 History Questionnaire II (DHQII) (n=24) (40) with an average estimated gestational age  
125 of  $14.7 \pm 5.9$  weeks. Participants were asked about the previous month of intake.  
126 Vioscreen was completed electronically at home by participants, with some receiving  
127 calls from research staff to complete the survey. DHQII was completed in-person with a  
128 certified registered dietitian within an average of  $4.4 \pm 5.5$  weeks of microbiome sample  
129 collection. The Dietary Inflammatory Index (DII) was calculated using the DII  
130 components common to both FFQs, a total of twenty-seven variables (60% of total DII  
131 parameters) which is within the DII's developer's suggested limit (28). Individuals were  
132 checked to ensure daily caloric intake  $< 500$  or  $> 5,000$  kcal/day). These DII variables  
133 included were daily intake of alcohol (g), vitamin B12 ( $\mu\text{g}$ ), vitamin B6 (mg),  $\beta$ -carotene  
134 ( $\mu\text{g}$ ), caffeine (g), carbohydrates (g), cholesterol (mg), energy (kcal), total fat (g), fiber  
135 (g), folic acid ( $\mu\text{g}$ ), iron (mg), magnesium (mg), monounsaturated fatty acids (myristoleic  
136 acid, MUFA 14:1) (g), niacin (mg), total protein (g), polyunsaturated fatty acids (PUFA)  
137 (g), riboflavin (mg), saturated fat (g), selenium ( $\mu\text{g}$ ), thiamin (mg), trans-saturated fat (g),  
138 vitamin A (retinol equivalents), vitamin C (mg), vitamin D ( $\mu\text{g}$ ), vitamin E (mg), and zinc  
139 (mg). Individual DII scores were calculated using (eq. 1):

140

$$141 \quad DII = \sum_{i=1}^n \left[ \left( \left[ \phi \left( \frac{\mu_{x_i} - \mu_{y_i}}{\sigma_i} \right) \right] \times 2 - 1 \right) \times S \right] \quad (\text{eq.1})$$

142

143 where  $n$  represents the total number of common DII parameters between VioScreen  
144 and DHQII;  $\mu_{x_i}$  is the mean daily intake of food parameter  $i$  obtained from the FFQ;  $\mu_{y_i}$  is  
145 the global mean (average daily intake across global populations) and;  $\sigma_i$  is the global

146 standard deviation of parameter  $i$  both derived from the reference table;  $\phi$  is the  
147 cumulative distribution function; and  $S$  represents the inflammatory effect score. Scores  
148 can range from  $-8.87$  to  $+7.98$  with the latter being the most inflammatory (28). After  
149 calculating DII scores for each participant, individuals were grouped into tertiles.  
150 Differences in patient demographics by DII tertile were assessed using Chi-square  
151 (qualitative) or ANOVA (quantitative). Correlations among DII parameters (continuous  
152 scale) were identified using Spearman's correlation using energy corrected nutritional  
153 values. Energy correction was performed by scaling each individual's food parameter by  
154 their reported daily caloric intake. Dimensionality reduction Principal Component  
155 Analysis (PCA) was performed on DII parameters to identify the key nutrients that drive  
156 DII scores. Differences in nutrient parameters by tertile were assessed using ANOVA  
157 and between Tertile 1 & Tertile 2/3 using students t-test. All analysis were completed in  
158 R.

159

## 160 **Microbiota Assessment**

161 Rectal and fecal samples underwent 16S rRNA amplicon sequencing in four different  
162 batches at the University of Chicago (Chicago, IL, US) and at the University of California  
163 San Diego (San Diego, CA, US) together with control samples to account for possible  
164 reactant and environmental contaminations. Forward raw FASTQ sequences were  
165 processed using the DADA2 pipeline independently using default parameters (41) and  
166 passed to the R package *phyloseq* (42). After primer removal, reads were truncated to  
167 150 base pairs, denoised using standard parameters, and chimeras were removed.  
168 Taxonomical assessment of the trimmed, cleaned reads was performed using the Silva

169 reference database version 132 (43). Contaminating amplicon sequence variances  
170 (ASV) found in blank controls were removed from each batch using the prevalence  
171 method in the R *decontam* package (44). A threshold of 0.5 was used to identify  
172 contaminants that were more prevalent in negative controls than in clinical samples.  
173 Samples with library size below 10 reads were excluded from downstream analysis.  
174 Subsequently, batch-effects were removed using the R package *ComBat-seq* (45). The  
175 count table and taxonomic assignments for each batch were then merged, keeping all  
176 the Amplicon Sequencing Variants (ASVs). ASVs with a relative abundance less than  
177 1% relative to sample library size were removed from downstream analysis. After  
178 prevalence filtering, taxa counts were normalized using cumulative sum scaling (CSS)  
179 (46). Alpha diversity was calculated using the Shannon (47) and Simpson indexes (48).  
180 Statically significant differences in mean alpha diversity between DII tertiles were  
181 assessed using Wilcoxon rank sum test (49). Beta diversity was determined with Bray-  
182 Curtis (50) and unweighted, normalized UniFrac distance (51). Significant differences in  
183 beta-diversity distances by DII scores were assessed using PERMANOVA (52)  
184 correcting for participant BMI, gestational weeks (EGA), food frequency questionnaire  
185 type (DHQII or Vioscreen), sample type (stool or rectal) and maternal age. Associations  
186 between DII and CSS-normalized ASVs were identified by fitting a zero-inflated  
187 Gaussian model with the R package *metagenomeSeq* (53). Models were adjusted by  
188 the same covariates as before. Multiple comparisons were corrected using the  
189 Benjamini-Hochberg method (54). Finally, gut metabolic potential was predicted via  
190 PICRUST 2.0 (Phylogenetic Investigation of Communities by Reconstruction of  
191 Unobserved States) (55). Associations between metabolic pathways, microbial

192 enzymes and DII scores were assessed with zero-inflated Gaussian models, corrected  
193 by the same covariates as above and multiple comparisons were adjusted using the  
194 Benjamin-Hochberg's method. Gene set enrichment analysis (GSEA) was performed  
195 using all microbial enzymes, identified as significant before FDR adjustment using the R  
196 package *MicrobiomeProfiler* (56). Finally, associations among the identified enzymes  
197 and each food parameter used in DII estimation were quantified with zero-inflated  
198 Gaussian models, corrected by the same covariates as above and multiple comparisons  
199 were adjusted using Benjamin-Hochberg's method. A total of 27 models were fit with Z-  
200 scored energy corrected food parameters per subject as the outcome and microbial  
201 enzymes as predictors.

202

## 203 **Results**

204 **Our sample was composed of minoritized women of color with a large percentage**  
205 **consuming a vitamin depleted pro-inflammatory diet.**

206 A total of 49 participants completed a FFQ and provided a fecal sample. The study  
207 cohort was primarily comprised of non-Hispanic Black (44%) and Hispanic (17%)  
208 pregnant persons with an average estimated gestational age of  $10.9 \pm 3$  weeks at fecal  
209 sample collection, average maternal age of  $29 \pm 6$  years, and 73% reporting an annual  
210 household income below \$31,000 per year (**Table 1**). Notably, most participants  
211 reported use of Federal Aid Health Insurance (75.5%), a proxy for low socioeconomic  
212 status (57). A similar number of participants completed the Vioscreen (n=25) and DHQII  
213 (n=24) FFQs. Based on the 27 food parameters common between both FFQs (60% of  
214 total DII parameters), DII scores were spread across low and higher inflammatory

215 scores with the lowest tertile (Tertile 1) mean of  $-2.3 (\pm 0.9)$  and highest (Tertile 3) mean  
216 DII of  $3.4 (\pm 0.5)$  (**Table 1**). All DII scores were within the normal limits specified by the  
217 DII score authors (29). Socio-demographic characteristics were similar across all three  
218 groups (**Table 1**,  $p > 0.05$ ). A less inflammatory diet was associated with higher  
219 vitamin B12, B6, A, niacin, iron, and zinc. (**Table 2**,  $p < 0.05$ ). These DII parameters  
220 were positively associated with each other (**Figure 1**,  $p < 0.05$ ). Of the nutrients used to  
221 calculate the DII score, the biggest contributors were those negatively associated with  
222 DII (**Figure 1**,  $p < 0.05$ ).

223  
224 **Gut microbiota composition and predicted metabolic potential were associated**  
225 **with proinflammatory diets in early pregnancy.**

226 There were no statistically significant differences in alpha or beta diversity by DII tertile  
227 (**Fig. S1A-D**,  $p$ -value  $> 0.05$ ). A total of 18 ASVs were identified as differentially  
228 abundant in terms of DII score (**Table S1**, false discovery rate (fdr)-adjusted  $p$ -value  $<$   
229  $0.05$ ). Among the top 10 ASVs, those mapped to *Solobacterium moorei*, *Gemella*  
230 *asaccharolytica*, *Gardnerella vaginalis*, *Atopobium vaginae* and unclassified members of  
231 the Eggerthellaceae family and the *Corynebacterium* genera, were positively associated  
232 with DII (**Fig. 2A**, adjusted  $p < 0.05$ ), while those mapped to *Parabacteroides distasonis*,  
233 unclassified members of the genus *Faecalibacterium*, *Prevotella*, and *Clostridium sensu*  
234 *stricto* (**Fig. 2A**, adjusted  $p < 0.05$ ) were negatively associated with dietary inflammatory  
235 potential.

236

237 Next, we examined which PICRUSt2 predicted microbial enzymes and metabolic  
238 pathways were associated with DII scores. We identified 2 pathways, aerobic  
239 adenosylcobalamin (vitamin B12) synthesis and methylglyoxal detoxification (**Fig. 2B**,  
240  $\text{fdr-adjusted } p < 0.05$ ), and 38 enzymes significantly associated with DII score (**Table**  
241 **S2**,  $\text{fdr-adjusted } p\text{-value} < 0.05$ ). The significantly enriched predicted enzymes were all  
242 positively associated with DII (**Table S2**) with several being involved in bacterial two-  
243 component system related to multi-drug efflux pumps (*K07642*, BaeS) and drug efflux  
244 pumps/resistance (*K18889*, *K18148*) and in galactose degradation and transport  
245 (*K10111*, *K12112*, *K0894*) (**Fig. 3A**,  $\text{fdr-adjusted } p < 0.05$ ). Gene set enrichment  
246 analysis of the DII associated predicted enzymes before multiple comparisons ( $n=194$ ,  
247  $p\text{-value} < 0.05$ ), also revealed an increase of two-component systems terms (58)  
248 primarily related to nitrogen and sugar metabolism, genes involved in nitrogen  
249 metabolism (specifically nitrate reduction to ammonia), biofilm formation, and galactose  
250 metabolism (**Fig. 3B**,  $\text{adjusted } p < 0.05$ , **Table S3**).

251

252 **Several individual DII components were associated with predicted microbial**  
253 **enzymes.**

254 Finally, we investigated the relationships between DII components and DII-associated  
255 enzymes (**Fig. 4**). Several DII-associated enzymes, such as efflux pumps and  
256 resistance genes, and enzymes pertaining to the galactose metabolism, were also  
257 associated with 19 individual DII food parameters including Vitamins B12, A, D, E, and  
258 cholesterol. The microbial resistance genes were *K18889* (multi-drug efflux pump),  
259 *K18148* (beta lactamase resistance) and *K07642* (two-component signaling system for

260 efflux pumps). *K07642* was associated with the largest number of DII components  
261 (63%, such as vitamins A, C, D, E among others). These enzymes were mostly  
262 negatively associated with essential vitamins and minerals (vitamin A, B12, Niacin, &  
263 Zinc) that were decreased in the higher DII individuals (**Table 2, Fig. 4**). The second  
264 group of enzymes associated with individual DII nutrient parameters (Sugar transporter  
265 *K10111*, Beta-galactosidase *K12112*, Beta-glucoside kinase *K18673*, and D-  
266 galactonate transporter *K01894*) were involved in galactose metabolism and were  
267 mostly negatively associated with key perinatal nutrients such as magnesium and folic  
268 acid. Cholesterol was the only nutrient positively associated with more than one  
269 enzyme (D-galactonate transporter *K01894* & Two-component systems *K07642*)

270

## 271 **Discussion**

272 Dietary intake is an essential aspect of maternal health. Food choice is often related to  
273 the dietary preferences of an individual, their environment, and their socioeconomic  
274 status. Under or oversupply of certain nutrients can have direct impacts on maternal  
275 health and the growing fetus (59, 60). This study demonstrated that diet inflammatory  
276 potential, an indicator of poor diet quality, was associated with lower vitamin and  
277 mineral intake, altered maternal gut microbiota composition and dysregulated microbial  
278 metabolic potential in early pregnancy. As diet is one of the main regulators of the gut  
279 microbiota (11, 12), poor diet quality during pregnancy could disrupt the normal dynamic  
280 adaptations of the maternal gut microbiota through altered substrate availability.

281

282 In our study, the overall gut microbiota diversity did not differ in individuals consuming  
283 higher inflammatory diets. While distinct patterns of beta diversity composition in  
284 pregnant individuals with better diet quality have been previously reported (61, 62),  
285 recent microbiome-pregnancy cohorts have not identified alterations in beta diversity by  
286 diet quality (63,64), supporting our study observations. At the taxonomic level, several  
287 ASVs varied with dietary inflammatory potential. Higher DII scores were associated with  
288 enrichment of pro-inflammatory bacterial species, including *S. moorei*, a producer of  
289 proinflammatory sulfur compounds (65), and those associated with inflammatory  
290 perinatal conditions such as preterm birth and GDM including *G. vaginalis*, *A. vaginae*  
291 (66) and members of the *Corynebacterium* genera (67). In contrast, microbiome  
292 members that were depleted in individuals reporting high DII scores included known  
293 producers of anti-inflammatory SCFAs such as *Faecalibacterium* (68). This suggests  
294 pro-inflammatory diets are associated with deleterious alterations to gut microbiota  
295 composition.

296  
297 The influence of maternal diet quality on the gut microbiota extends to their metabolic  
298 potential, as our study reveals a link between the predicted metabolic capabilities of gut  
299 microbes in individuals with higher inflammatory diets and community-wide metabolic  
300 dysregulation. The Cob(II)yrinate a,c-diamide biosynthesis metabolic pathway (part of  
301 adenosylcobalamin/vitamin B12 pathway) (69) was increased in participants reporting  
302 higher DII scores. Vitamin B12 deficiency can lead to upregulation of the cytokine TNF-  
303  $\alpha$  (70) and has been linked to multiple perinatal disorders including pre-eclampsia and  
304 neonate growth retardation (71). The increase in this bacterial pathway may be related



305 to the insufficient vitamin B12 intake of the high DII group and a subsequent shift  
306 towards microbial communities capable of producing this essential vitamin to  
307 compensate for the unbalance. The second pathway associated with high DII scores  
308 was a microbially regulated methylglyoxal detoxification pathway. Methylglyoxal is a  
309 toxic oxidizing substance derived from sugar metabolism, a DII enriched process in this  
310 study, and is known to be elevated in perinatal metabolic disorders such as gestational  
311 diabetes mellitus (72,73). Methylglyoxal detoxification can occur via glyoxalase system  
312 (74,75), a common microbial detoxification pathway (76,77). This finding highlights the  
313 pro-inflammatory nature of poor diet quality as well as the compensatory shift in the gut  
314 microbiota to reduce toxic metabolic species.

315  
316 DII scores were also associated with the upregulation of microbial virulence pathways,  
317 such as drug resistance, biofilm formation as well as nitrogen and sugar/galactose  
318 metabolism. Sugar and galactose metabolism overall was enriched in individuals  
319 reporting high DII scores. Galactose metabolism has been shown to be enriched in  
320 perinatal inflammatory conditions such as gestational diabetes (78,79) and specifically  
321 associated with elevated methylglyoxal (80). Notably, *S. moorei* and *G. vaginalis* were  
322 both positively linked with DII scores and have been reported to contribute to galactose  
323 fermentation (65,81). Enrichment of microbial multidrug resistant efflux pumps enzymes  
324 (*K07642,18889, K18148*) could be promoted by host pro-inflammatory diets. Recent  
325 work has shown bacterial multidrug efflux pumps are involved in nutrient signal  
326 processing, cellular adaptations to anaerobic respiration, and colonization of eukaryotic  
327 cells (82). Poor maternal diet quality may promote expression of these gut microbial

328 enzymes in response to nutrient alterations. The predicted gut microbial enzymes  
329 related to both galactose metabolism and virulent efflux pumps were also mostly  
330 negatively correlated with vitamins and minerals (i.e., vitamins B12 and A and iron,  
331 magnesium, niacin, zinc) that were decreased in high DII individuals. Taken together,  
332 our results suggest that a vitamin and mineral depleted perinatal diet is associated with  
333 a shift in the gut microbiota towards a more pathogenic/pro-inflammatory community.

334  
335 Our cohort was primarily comprised of low-income Black and Latinx pregnant persons.  
336 Intake of highly processed foods is a hallmark of a Western diet, a diet pattern that is  
337 more common among disadvantaged minorities in the U.S., as these foods are more  
338 affordable and attainable for individuals with high financial burden (83). Previous studies  
339 from large perinatal cohorts, such as the 30-year longitudinal AVON study, have shown  
340 that women with lower access to high quality foods, have decreased vitamin and  
341 mineral intake (6). Our results support the hypothesis that poor diet quality is linked to  
342 insufficient vitamin and mineral dietary intake and accompanied by pro-inflammatory  
343 adjustments in the gut microbiome composition and metabolic structure.

344  
345 **Strengths and Limitations.** Our work focused on an understudied population at high  
346 risk of multiple health disorders, such as hypertension and GDM (6, 84). Associations  
347 between diet inflammatory potential and gut microbiota during pregnancy are under  
348 explored, and our research indicates that there is a significant link between microbial  
349 composition and metabolic functions and dietary inflammatory potential. Our work could  
350 be further improved by employing a more comprehensive dietary assessment approach

351 that can assess all the 45 dietary parameters to calculate DII instead of just a portion of  
352 them (27 used for this study); including a larger sample size of a more diverse  
353 population in terms of DII scores that is followed longitudinally to determine the effects  
354 of DII on the gut microbiome later in pregnancy and perinatal disease development;  
355 employing a single stool sampling method; utilizing the same diet assessment for all  
356 participants and at the same collection time; employing sequencing technologies that  
357 enable to measure the abundance of microbial genes, such as shotgun sequencing  
358 (metagenomics), instead of relying in metabolic predictions; and further characterizing  
359 the host immune and metabolic profiles.

360

## 361 **Conclusion**

362 A proinflammatory diet, measured by DII, characterized by low intake of vitamins B12,  
363 B6, and A and iron, magnesium, niacin, riboflavin, and zinc, during early pregnancy is  
364 associated with a pro-inflammatory shift in the gut microbiota and metabolism as  
365 indicated by increase in galactose metabolism and methylglyoxal detoxification and  
366 multi drug efflux pump expression. Further characterization of gut metabolic status as a  
367 function of dietary alterations can provide opportunities for future research and targeted  
368 intervention strategies for at risk perinatal populations.

369

## 370 **Acknowledgements**

LTH, SAA and BPB designed the current study; PM designed the original study; ESW,  
UN, BPB recruited participants and collected the samples; LBP and BL assessed diet  
using DHQII; SAA analyzed the data; SAA, LTH and BPB interpreted the data; SAA and

BPB wrote the initial manuscript. All authors critically read and approved the manuscript. BPB was funded by the Arnold O. Beckman Postdoctoral Award, K12 BIRCWH Award (K12HD101373) and a NARSAD Young Investigator Award from the Brain and Behavior Research Foundation. JAG was funded by an NIDDK 1U24DK131617. SAA was supported by the University of Illinois Medical Scientist Training Program. This work has been also partially funded by the NICHD R03HD095056. REDCap application is supported through the Center for Clinical and Translational Science (CCTS) UL1TR002003.

### 371 **Reference Code**

All analyses were performed in R. The R notebook containing all analyses and de-identified data can be found at [https://github.com/LabBea/Perinatal\\_DII](https://github.com/LabBea/Perinatal_DII)

### 372 **Data Availability**

Data will be made available through the SRI repository.

### **References**

1. Scholl, T. O., & Johnson, W. G. (2000). Folic acid: influence on the outcome of pregnancy. *The American journal of clinical nutrition*, 71(5), 1295S-1303S.
2. Georgieff, M. K. (2020). Iron deficiency in pregnancy. *American journal of obstetrics and gynecology*, 223(4), 516-524.
3. Lawlor DA, Fraser A, Lindsay RS, Ness A, Dabelea D, Catalano P, Davey Smith G, Sattar N, Nelson SM. Association of existing diabetes, gestational diabetes and

glycosuria in pregnancy with macrosomia and offspring body mass index, waist and fat mass in later childhood: findings from a prospective pregnancy cohort. *Diabetologia*. 2010 Jan;53(1):89-97. doi: 10.1007/s00125-009-1560-z. Epub 2009 Oct 20. PMID: 19841891.

4. Abdollahi, S., Soltani, S., de Souza, R. J., Forbes, S. C., Toupchian, O., & Salehi-Abargouei, A. (2021). Associations between maternal dietary patterns and perinatal outcomes: a systematic review and meta-analysis of cohort studies. *Advances in nutrition*, 12(4), 1332-1352.

5. Cappelletti, M., Della Bella, S., Ferrazzi, E., Mavilio, D., & Divanovic, S. (2016). Inflammation and preterm birth. *Journal of leukocyte biology*, 99(1), 67-78.

6. Emmett, P. M., Jones, L. R., & Golding, J. (2015). Pregnancy diet and associated outcomes in the Avon Longitudinal Study of Parents and Children. *Nutrition reviews*, 73(suppl\_3), 154-174.

7. Vilda, D., Wallace, M., Dyer, L., Harville, E., & Theall, K. (2019). Income inequality and racial disparities in pregnancy-related mortality in the US. *SSM-population health*, 9, 100477.

8. Crear-Perry, J., Correa-de-Araujo, R., Lewis Johnson, T., McLemore, M. R., Neilson, E., & Wallace, M. (2021). Social and structural determinants of health inequities in maternal health. *Journal of women's health*, 30(2), 230-235.

9. Nash, D. M., Gilliland, J. A., Evers, S. E., Wilk, P., & Campbell, M. K. (2013). Determinants of diet quality in pregnancy: sociodemographic, pregnancy-specific, and food environment influences. *Journal of nutrition education and behavior*, 45(6), 627-634.

10. Danielewicz, H., Myszczyzyn, G., Dębińska, A. et al. Diet in pregnancy—more than food. *Eur J Pediatr* 176, 1573–1579 (2017). <https://doi.org/10.1007/s00431-017-3026-5>
11. Nieuwdorp, M., Gilijamse, P. W., Pai, N., & Kaplan, L. M. (2014). Role of the microbiome in energy regulation and metabolism. *Gastroenterology*, 146(6), 1525-1533.
12. David, L. A., Maurice, C. F., Carmody, R. N., Gootenberg, D. B., Button, J. E., Wolfe, B. E., ... & Turnbaugh, P. J. (2014). Diet rapidly and reproducibly alters the human gut microbiome. *Nature*, 505(7484), 559-563.
13. Turnbaugh, P. J., Ley, R. E., Hamady, M., Fraser-Liggett, C. M., Knight, R., & Gordon, J. I. (2007). The human microbiome project. *Nature*, 449(7164), 804-810.
14. Roager, H. M., Vogt, J. K., Kristensen, M., Hansen, L. B. S., Ibrügger, S., Mærkedahl, R. B., ... & Licht, T. R. (2019). Whole grain-rich diet reduces body weight and systemic low-grade inflammation without inducing major changes of the gut microbiome: a randomised cross-over trial. *Gut*, 68(1), 83-93.
15. Hildebrandt, M. A., Hoffmann, C., Sherrill–Mix, S. A., Keilbaugh, S. A., Hamady, M., Chen, Y. Y., ... & Wu, G. D. (2009). High-fat diet determines the composition of the murine gut microbiome independently of obesity. *Gastroenterology*, 137(5), 1716-1724.
16. Liu, Z. Z., Sun, J. H., & Wang, W. J. (2022). Gut microbiota in gastrointestinal diseases during pregnancy. *World Journal of Clinical Cases*, 10(10), 2976.
17. Peterson, L. S., Stelzer, I. A., Tsai, A. S., Ghaemi, M. S., Han, X., Ando, K., ... & Gaudilliere, B. (2020, August). Multiomic immune clockworks of pregnancy. In *Seminars in immunopathology* (Vol. 42, pp. 397-412). Springer Berlin Heidelberg.

18. Mor, G., & Cardenas, I. (2010). The immune system in pregnancy: a unique complexity. *American journal of reproductive immunology*, 63(6), 425-433.
19. Koren, O., Goodrich, J. K., Cullender, T. C., Spor, A., Laitinen, K., Bäckhed, H. K., ... & Ley, R. E. (2012). Host remodeling of the gut microbiome and metabolic changes during pregnancy. *Cell*, 150(3), 470-480.
20. Smid, M. C., Ricks, N. M., Panzer, A., Mccoy, A. N., Azcarate-Peril, M. A., Keku, T. O., & Boggess, K. A. (2018). Maternal gut microbiome biodiversity in pregnancy. *American journal of perinatology*, 35(01), 024-030.
21. Dualib, P. M., Taddei, C. R., Fernandes, G., Carvalho, C. R., Sparvoli, L. G., Silva, I. T., ... & Almeida-Pititto, B. D. (2022). Gut microbiota across normal gestation and gestational diabetes mellitus: A cohort analysis. *Metabolites*, 12(9), 796.
22. Vijay-Kumar, M., Aitken, J. D., Carvalho, F. A., Cullender, T. C., Mwangi, S., Srinivasan, S., ... & Gewirtz, A. T. (2010). Metabolic syndrome and altered gut microbiota in mice lacking Toll-like receptor 5. *Science*, 328(5975), 228-231.
23. Chen, X., Wu, R., Li, L., Zeng, Y., Chen, J., Wei, M., ... & Gong, S. (2023). Pregnancy-induced changes to the gut microbiota drive macrophage pyroptosis and exacerbate septic inflammation. *Immunity*, 56(2), 336-352.
24. Gohir, W., Whelan, F. J., Surette, M. G., Moore, C., Schertzer, J. D., & Sloboda, D. M. (2015). Pregnancy-related changes in the maternal gut microbiota are dependent upon the mother's periconceptional diet. *Gut microbes*, 6(5), 310-320.
25. Ponzio, V., Fedele, D., Goitre, I., Leone, F., Lezo, A., Monzeglio, C., ... & Bo, S. (2019). Diet-gut microbiota interactions and gestational diabetes mellitus (GDM). *Nutrients*, 11(2), 330.

26. Long, Y., Liang, F., Guo, R., Zhu, C., Zhao, X., Wang, X., ... & Yang, H. (2021). Gut Microbiota Signatures in Gestational Anemia. *Frontiers in Cellular and Infection Microbiology*, 11, 549678.
27. Peñalver Bernabé, B., Maki, P. M., Cunningham, J. L., Eisenlohr-Moul, T., Tussing-Humphreys, L., Carroll, I. M., ... & Kimmel, M. (2023). Interactions between perceived stress and microbial-host immune components: two demographically and geographically distinct pregnancy cohorts. *Translational Psychiatry*, 13(1), 3.
28. Shivappa, N., Steck, S. E., Hurley, T. G., Hussey, J. R., & Hébert, J. R. (2014). Designing and developing a literature-derived, population-based dietary inflammatory index. *Public health nutrition*, 17(8), 1689-1696.
29. James R Hébert, Nitin Shivappa, Michael D Wirth, James R Hussey, Thomas G Hurley, Perspective: The Dietary Inflammatory Index (DII)—Lessons Learned, Improvements Made, and Future Directions, *Advances in Nutrition*, Volume 10, Issue 2, March 2019, Pages 185–195,
30. Hariharan, R., Odjidja, E. N., Scott, D., Shivappa, N., Hébert, J. R., Hodge, A., & de Courten, B. (2022). The dietary inflammatory index, obesity, type 2 diabetes, and cardiovascular risk factors and diseases. *Obesity Reviews*, 23(1), e13349.
31. Sen, S., Rifas-Shiman, S. L., Shivappa, N., Wirth, M. D., Hébert, J. R., Gold, D. R., ... & Oken, E. (2015). Dietary inflammatory potential during pregnancy is associated with lower fetal growth and breastfeeding failure: results from Project Viva. *The Journal of nutrition*, 146(4), 728-736.
32. McCullough LE, Miller EE, Calderwood LE, Shivappa N, Steck SE, Forman MR, A Mendez M, Maguire R, Fuemmeler BF, Kollins SH, D Bilbo S, Huang Z, Murtha AP,



Murphy SK, Hébert JR, Hoyo C. Maternal inflammatory diet and adverse pregnancy outcomes: Circulating cytokines and genomic imprinting as potential regulators? *Epigenetics*. 2017 Aug;12(8):688-697. doi: 10.1080/15592294.2017.1347241. Epub 2017 Jul 5. PMID: 28678596; PMCID: PMC5687326.

33. Casas R, Castro-Barquero S, Crovetto F, Larroya M, Ruiz-León AM, Segalés L, Nakaki A, Youssef L, Benitez L, Casanovas-Garriga F, Vieta E, Crispi F, Gratacós E, Estruch R. Maternal Dietary Inflammatory Index during Pregnancy Is Associated with Perinatal Outcomes: Results from the IMPACT BCN Trial. *Nutrients*. 2022 May 29;14(11):2284. doi: 10.3390/nu14112284. PMID: 35684084; PMCID: PMC9182900.

34. Li, M., van Esch, B. C., Wagenaar, G. T., Garssen, J., Folkerts, G., & Henricks, P. A. (2018). Pro-and anti-inflammatory effects of short chain fatty acids on immune and endothelial cells. *European journal of pharmacology*, 831, 52-59.

35. Mirzaei, R., Dekhodaie, E., Bouzari, B., Rahimi, M., Gholestani, A., Hosseini-Fard, S. R., ... & Karampoor, S. (2022). Dual role of microbiota-derived short-chain fatty acids on host and pathogen. *Biomedicine & Pharmacotherapy*, 145, 112352.

36. Dasinger, J. H., Abais-Battad, J. M., & Mattson, D. L. (2020). Influences of environmental factors during preeclampsia. *American Journal of Physiology-Regulatory, Integrative and Comparative Physiology*, 319(1), R26-R32.

37. Davis, J. A., Collier, F., Mohebbi, M., Pasco, J. A., Shivappa, N., Hébert, J. R., ... & Loughman, A. (2021). The associations of butyrate-producing bacteria of the gut microbiome with diet quality and muscle health. *Gut Microbiome*, 2, e2.

38. Wenzel, E., Bernabe, B. P., Dowty, S., Nagelli, U., Pezley, L., Gibbons, R., & Maki, P. (2022). Using computerised adaptive tests to screen for perinatal depression in underserved women of colour. *BMJ Ment Health*, 25(1), 23-28.
39. Kristal, A. R., Kolar, A. S., Fisher, J. L., Plascak, J. J., Stumbo, P. J., Weiss, R., & Paskett, E. D. (2014). Evaluation of web-based, self-administered, graphical food frequency questionnaire. *Journal of the Academy of Nutrition and Dietetics*, 114(4), 613-621.
40. Thompson FE, Subar AF, Brown CC, Smith AF, Sharbaugh CO, Jobe JB, Mittl B, Gibson JT, Ziegler RG. Cognitive research enhances accuracy of food frequency questionnaire reports: results of an experimental validation study. *J Am Diet Assoc*. 2002 Feb;102(2):212-25. doi: 10.1016/s0002-8223(02)90050-7. PMID: 11846115.
41. Callahan BJ, McMurdie PJ, Rosen MJ, Han AW, Johnson AJA, Holmes SP (2016). "DADA2: High-resolution sample inference from Illumina amplicon data." *Nature Methods*, 13, 581-583. doi: 10.1038/nmeth.3869 (URL: <https://doi.org/10.1038/nmeth.3869>).
42. McMurdie, P. J., & Holmes, S. (2013). phyloseq: an R package for reproducible interactive analysis and graphics of microbiome census data. *PloS one*, 8(4), e61217.
43. Quast C, Pruesse E, Yilmaz P, Gerken J, Schweer T, Yarza P, Peplies J, Glöckner FO (2013) The SILVA ribosomal RNA gene database project: improved data processing and web-based tools. *Nucl. Acids Res*. 41 (D1): D590-D596.
44. Davis NM, Proctor D, Holmes SP, Relman DA, Callahan BJ (2017). "Simple statistical identification and removal of contaminant sequences in marker-gene and

metagenomics data.” `_bioRxiv_`, 221499. doi: 10.1101/221499  
([URL:https://doi.org/10.1101/221499](https://doi.org/10.1101/221499)).

45. Jeffrey T. Leek, W. Evan Johnson, Hilary S. Parker, Elana J. Fertig, Andrew E. Jaffe, Yuqing Zhang, John D. Storey and Leonardo Collado Torres (2021). `sva`: Surrogate Variable Analysis. R package version 3.42.0.

46. Weiss, S. J., Xu, Z., Amir, A., Peddada, S., Bittinger, K., Gonzalez, A., ... & Knight, R. (2015). Effects of library size variance, sparsity, and compositionality on the analysis of microbiome data (No. e1408). *PeerJ PrePrints*.

47. Haegeman, B., Hamelin, J., Moriarty, J., Neal, P., Dushoff, J., & Weitz, J. S. (2013). Robust estimation of microbial diversity in theory and in practice. *The ISME journal*, 7(6), 1092-1101.

48. Kim, B. R., Shin, J., Guevarra, R. B., Lee, J. H., Kim, D. W., Seol, K. H., ... & Isaacson, R. E. (2017). Deciphering diversity indices for a better understanding of microbial communities. *Journal of Microbiology and Biotechnology*, 27(12), 2089-2093.

49. Haynes, W. (2013). Wilcoxon rank sum test. *Encyclopedia of systems biology*, 3(1), 2354-2355.

50. Bray, J. R., & Curtis, J. T.(1957). An ordination of the upland forest communities of southern Wisconsin. *Ecol. Monogr*, 27, 325-349.

51. Lozupone, C., & Knight, R. (2005). UniFrac: a new phylogenetic method for comparing microbial communities. *Applied and environmental microbiology*, 71(12), 8228-8235.

52. Anderson, M. J. (2001). A new method for non-parametric multivariate analysis of variance. *Austral ecology*, 26(1), 32-46.

53. Paulson JN, Stine OC, Bravo HC, Pop M (2013). “Differential abundance analysis for microbial marker-gene surveys.” *Nat Meth*, \*advance online publication\*. doi: 10.1038/nmeth.2658 (URL: <https://doi.org/10.1038/nmeth.2658>)
54. Benjamini, Y., & Hochberg, Y. (1995). Controlling the false discovery rate: a practical and powerful approach to multiple testing. *Journal of the Royal statistical society: series B (Methodological)*, 57(1), 289-300.
55. Douglas, G.M., Maffei, V.J., Zaneveld, J.R. et al. PICRUSt2 for prediction of metagenome functions. *Nat Biotechnol* 38, 685–688 (2020).
56. Meijun Chen and Guangchuang Yu (2021). MicrobiomeProfiler: An R/shiny package for microbiome functional enrichment analysis. R package version 1.0.0. <https://github.com/YuLab-SMU/MicrobiomeProfiler/>
57. Admon, L. K., Daw, J. R., Winkelman, T. N., Kozhimannil, K. B., Zivin, K., Heisler, M., & Dalton, V. K. (2021). Insurance coverage and perinatal health care use among low-income women in the US, 2015-2017. *JAMA Network Open*, 4(1), e2034549-e2034549.
58. Papon, N., & Stock, A. M. (2019). Two-component systems. *Current Biology*, 29(15), R724-R725.
59. Sinha, T., Brushett, S., Prins, J., & Zhernakova, A. (2023). The maternal gut microbiome during pregnancy and its role in maternal and infant health. *Current Opinion in Microbiology*, 74, 102309.
60. Dunlop, A. L., Mulle, J. G., Ferranti, E. P., Edwards, S., Dunn, A. B., & Corwin, E. J. (2015). The maternal microbiome and pregnancy outcomes that impact infant health: a

review. *Advances in neonatal care: official journal of the National Association of Neonatal Nurses*, 15(6), 377.

61. Lotankar, M., Mokkalá, K., Houttu, N., Koivuniemi, E., Sørensen, N., Nielsen, H. B., ... & Laitinen, K. (2022). Distinct Diet-Microbiota-Metabolism Interactions in Overweight and Obese Pregnant Women: a Metagenomics Approach. *Microbiology Spectrum*, 10(2), e00893-21.

62. Shrestha, N., Sleep, S. L., Cuffe, J. S., Holland, O. J., McAinch, A. J., Dekker Nitert, M., & Hryciw, D. H. (2020). Pregnancy and diet-related changes in the maternal gut microbiota following exposure to an elevated linoleic acid diet. *American Journal of Physiology-Endocrinology and Metabolism*, 318(2), E276-E285.

63. Gow, M. L., Chua, X. Y., El-Omar, E., Susic, D., & Henry, A. (2023). Relationship between Diet Quality and Maternal Stool Microbiota in the MUMS Australian Pregnancy Cohort. *Nutrients*, 15(3), 689.

64. O'Connor, H., Li, S., Hodge, A., Callaway, L., David McIntyre, H., Barrett, H., ... & Nitert, M. D. (2023). Gut microbiome composition is similar between pregnant women with excess body fat with healthy and less healthy dietary intake patterns. *Journal of Human Nutrition and Dietetics*.

65. Barrak, I., Stájer, A., Gajdács, M., & Urbán, E. (2020). Small, but smelly: the importance of *Solobacterium moorei* in halitosis and other human infections. *Heliyon*, 6(10).

66. Bretelle, F., Rozenberg, P., Pascal, A., Favre, R., Bohec, C., Loundou, A., ... & Javoise, S. (2015). High *Atopobium vaginae* and *Gardnerella vaginalis* vaginal loads are associated with preterm birth. *Clinical Infectious Diseases*, 60(6), 860-867.

67. Chen, F., Gan, Y., Li, Y., He, W., Wu, W., Wang, K., & Li, Q. (2021). Association of gestational diabetes mellitus with changes in gut microbiota composition at the species level. *BMC microbiology*, 21(1), 147.
68. Ziętek, M., Celewicz, Z., & Szczuko, M. (2021). Short-chain fatty acids, maternal microbiota and metabolism in pregnancy. *Nutrients*, 13(4), 1244.
69. Martens, J. H., Barg, H., Warren, M. A., & Jahn, D. (2002). Microbial production of vitamin B 12. *Applied microbiology and biotechnology*, 58, 275-285.
70. Al-Daghri, N. M., Rahman, S., Sabico, S., Yakout, S., Wani, K., Al-Attas, O. S., ... & Alokail, M. S. (2016). Association of vitamin B12 with pro-inflammatory cytokines and biochemical markers related to cardiometabolic risk in Saudi subjects. *Nutrients*, 8(9), 460.
71. Rashid, S., Meier, V., & Patrick, H. (2021). Review of Vitamin B12 deficiency in pregnancy: a diagnosis not to miss as veganism and vegetarianism become more prevalent. *European Journal of Haematology*, 106(4), 450-455.
72. Piuri, G., Basello, K., Rossi, G., Soldavini, C. M., Duiella, S., Privitera, G., ... & Ferrazzi, E. (2020). Methylglyoxal, glycated albumin, PAF, and TNF- $\alpha$ : possible inflammatory and metabolic biomarkers for management of gestational diabetes. *Nutrients*, 12(2), 479.
73. Francisco, F. A., Saavedra, L. P., Ferreira-Junior, M. D., Cavalcante, K. V., Moreira, V. M., Prates, K. V., ... & Gomes, R. M. (2022). Early postnatal exposure of rat pups to methylglyoxal induces oxidative stress, inflammation and dysmetabolism at adulthood. *Journal of Developmental Origins of Health and Disease*, 13(5), 617-625.

74. Thornalley, P. J. (1996). Pharmacology of methylglyoxal: formation, modification of proteins and nucleic acids, and enzymatic detoxification—a role in pathogenesis and antiproliferative chemotherapy. *General Pharmacology: The Vascular System*, 27(4), 565-573.
75. Morgenstern, J., Campos Campos, M., Nawroth, P., & Fleming, T. (2020). The glyoxalase system—new insights into an ancient metabolism. *Antioxidants (Basel)* 9: 939.
76. Anaya-Sanchez, A., Feng, Y., Berude, J. C., & Portnoy, D. A. (2021). Detoxification of methylglyoxal by the glyoxalase system is required for glutathione availability and virulence activation in *Listeria monocytogenes*. *PLoS pathogens*, 17(8), e1009819.
77. Pavin, S. S., Prestes, A. D. S., Dos Santos, M. M., de Macedo, G. T., Ferreira, S. A., Claro, M. T., ... & Vargas Barbosa, N. (2021). Methylglyoxal disturbs DNA repair and glyoxalase I system in *Saccharomyces cerevisiae*. *Toxicology Mechanisms and Methods*, 31(2), 107-115.
78. Ferrocino, I., Ponzio, V., Gambino, R., Zarovska, A., Leone, F., Monzeglio, C., ... & Bo, S. (2018). Changes in the gut microbiota composition during pregnancy in patients with gestational diabetes mellitus (GDM). *Scientific reports*, 8(1), 12216.
79. Enquobahrie, D. A., Denis, M., Tadesse, M. G., Gelaye, B., Ressom, H. W., & Williams, M. A. (2015). Maternal early pregnancy serum metabolites and risk of gestational diabetes mellitus. *The Journal of Clinical Endocrinology & Metabolism*, 100(11), 4348-4356.

80. Li, H., Zheng, L., Chen, C., Liu, X., & Zhang, W. (2019). Brain senescence caused by elevated levels of reactive metabolite methylglyoxal on D-galactose-induced aging mice. *Frontiers in Neuroscience*, 13, 1004.
81. Taylor-Robinson, D. (1984). The bacteriology of *Gardnerella vaginalis*. *Scandinavian journal of urology and nephrology. Supplementum*, 86, 41-55.
82. Nishino, Kunihiko, Seiji Yamasaki, Ryosuke Nakashima, Martijn Zwama, and Mitsuko Hayashi-Nishino. "Function and inhibitory mechanisms of multidrug efflux pumps." *Frontiers in Microbiology* 12 (2021): 737288.
83. Jevitt, C. M. (2019). Obesity and socioeconomic disparities: rethinking causes and perinatal care. *The Journal of perinatal & neonatal nursing*, 33(2), 126-135.
84. Dubois, L., Girard, M., & Bergeron, N. (2000). The choice of a diet quality indicator to evaluate the nutritional health of populations. *Public health nutrition*, 3(3), 357-365



373 **Table 1: Study cohort demographic characteristics did not differ as a function of**  
 374 **DII scores.** Participants were stratified into DII tertiles. There were no differences in  
 375 study characteristics by DII tertile ( $p > 0.05$ ).

		<b>Tertile 1</b>	<b>Tertile 2</b>	<b>Tertile 3</b>	<b>p</b>
DII	Mean (SD)	-2.3 (0.9)	1.0 (0.9)	3.4 (0.5)	
Gestational Weeks	Mean (SD)	11.2 (3.5)	11.2 (2.9)	10.2 (2.7)	0.59
Age	Mean (SD)	28.7 (7.8)	28.6 (5.3)	30.2 (5.3)	0.69
BMI	Mean (SD)	29.0 (7.2)	30.4 (6.6)	28.3 (7.5)	0.7
Race/Ethnicity	Hispanic	2 (12.5)	4 (25.0)	2 (11.8)	0.35
	Non-Hispanic Black	10 (62.5)	6 (37.5)	6 (35.3)	
	Other/Unreported	4 (25.0)	6 (37.5)	9 (52.9)	
Health Insurance	Federal Aide	14 (87.5)	10 (62.5)	13 (76.5)	0.26
	Private	2 (12.5)	6 (37.5)	4 (23.5)	
Education	Above College	1 (6.2)	4 (25.0)	5 (29.4)	0.34
	Below College	6 (37.5)	4 (25.0)	7 (41.2)	
	College	9 (56.2)	8 (50.0)	5 (29.4)	
Employment	Employed Part/Full Time	11 (68.8)	8 (50.0)	10 (58.8)	0.56
	Unemployed	5 (31.2)	8 (50.0)	7 (41.2)	
Income	\$31-76k	2 (12.5)	3 (18.8)	2 (11.8)	0.78
	\$76k+	1 (6.2)	3 (18.8)	2 (11.8)	
	<\$31k	13 (81.2)	10 (62.5)	13 (76.5)	
Relationship Status	Married/Relationship	7 (43.8)	11 (68.8)	11 (64.7)	0.3
	Single	9 (56.2)	5 (31.2)	6 (35.3)	

Planned Pregnancy	No	6 (37.5)	1 (6.2)	2 (11.8)	0.17
	Unreported	8 (50.0)	10 (62.5)	11 (64.7)	
	Yes	2 (12.5)	5 (31.2)	4 (23.5)	

376

377

378

379

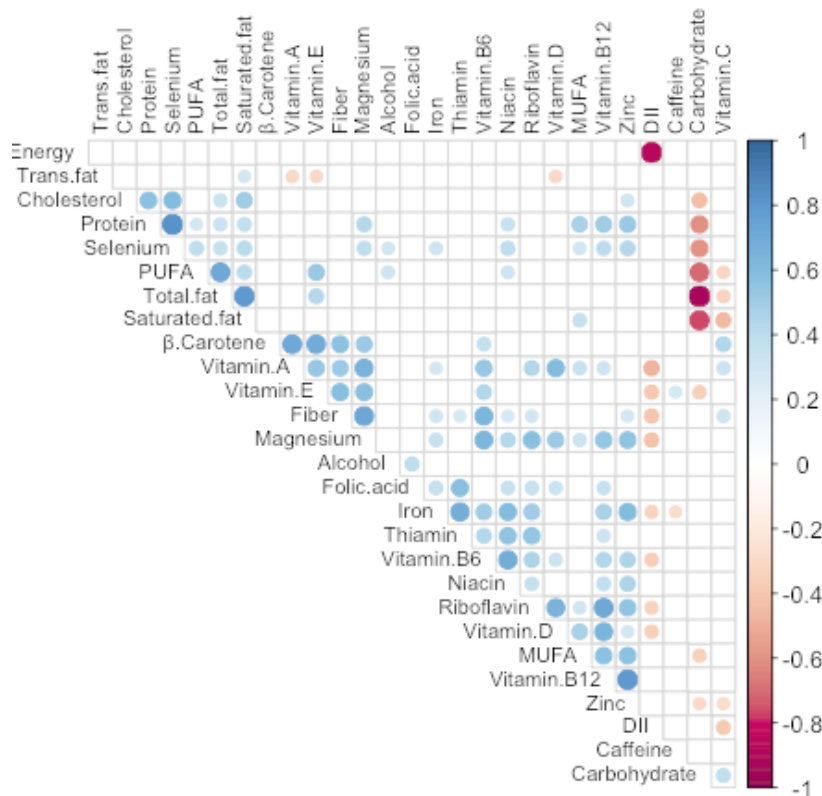
380 **Table 2: Differences in nutritional intake by DII tertile.** Reported mean (SD) nutrient  
 381 values were normalized by total Energy intake per day (kcal/day). Vitamin A was  
 382 reported in retinol equivalents (RE).

	<b>Tertile 1</b>	<b>Tertile 2</b>	<b>Tertile 3</b>	<b>p</b>
Alcohol (g)	0.1 (0.3)	0.1 (0.2)	0.1 (0.5)	0.83
Vitamin B12 (µg)	3.2 (1.1)	2.9 (1.2)	2.2 (0.9)	<b>0.03</b>
Vitamin B6 (mg)	1.1 (0.4)	1.0 (0.3)	0.8 (0.2)	<b>0.02</b>
β Carotene (µg)	1983.5 (1563.7)	1547.3 (1698.9)	1491.2 (1104.8)	0.58
Caffeine (g)	0.0 (0.0)	0.0 (0.0)	0.0 (0.0)	0.43
Carbohydrate (g)	127.5 (25.0)	129.0 (28.0)	129.1 (33.9)	0.98
Cholesterol (mg)	136.6 (66.6)	145.8 (64.5)	163.6 (113.8)	0.65
Energy (kcal)	2988.0 (924.1)	1801.1 (409.1)	969.8 (333.8)	
Total fat (g)	39.5 (9.6)	40.3 (9.5)	39.9 (11.4)	0.98
Fiber (g)	10.9 (2.4)	10.1 (3.3)	8.9 (2.2)	0.11
Folic acid (µg)	168.4 (84.9)	165.8 (86.0)	128.7 (75.9)	0.31
Iron (mg)	9.1 (3.4)	7.9 (2.8)	6.2 (1.7)	<b>0.01</b>
Magnesium (mg)	171.2 (35.5)	147.1 (35.7)	143.2 (40.8)	0.08
MUFA (g)	0.0 (0.0)	0.1 (0.0)	0.0 (0.0)	0.49
Niacin (mg)	11.7 (3.1)	10.1 (2.1)	9.0 (2.8)	<b>0.02</b>
Protein (g)	39.4 (6.1)	35.6 (7.0)	35.6 (11.4)	0.37
PUFA (g)	8.2 (2.3)	7.9 (2.7)	8.1 (4.7)	0.97
Riboflavin (mg)	1.3 (0.4)	1.1 (0.4)	0.9 (0.3)	0.02
Saturated fat (g)	13.5 (3.5)	14.2 (4.1)	13.4 (4.3)	0.82
Selenium (µg)	52.2 (10.2)	49.5 (11.6)	51.1 (19.5)	0.87
Thiamin (mg)	0.9 (0.3)	0.8 (0.2)	0.7 (0.2)	0.11

Trans fat (g)	1.7 (0.5)	1.8 (0.6)	1.6 (0.7)	0.75
Vitamin A (RE)	523.2 (192.7)	437.0 (191.1)	358.8 (150.4)	<b>0.04</b>
Vitamin C (mg)	85.5 (42.4)	71.7 (47.2)	64.5 (53.1)	0.45
Vitamin D (µg)	3.9 (1.9)	3.6 (2.0)	2.6 (1.7)	0.1
Vitamin E (mg)	5.1 (2.1)	3.9 (1.2)	4.1 (1.8)	0.13
Zinc (mg)	6.5 (1.8)	5.9 (1.4)	5.1 (1.4)	<b>0.04</b>

383

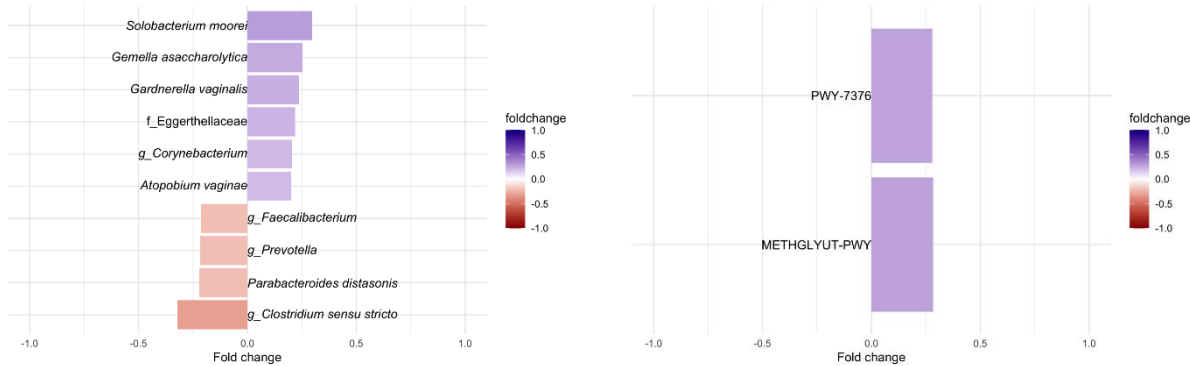
384



385 **Figure 1: Components and drivers of DII scores.** Spearman correlation ( $p < 0.05$ )  
 386 among the 27 parameters used to calculate the DII scores for each subject. Dot size is  
 387 proportional to the absolute correlation coefficient. See supplemental methods for more  
 388 details (units and references). PUFA: polyunsaturated fatty acids; MUFA:  
 389 monounsaturated fatty acids.  
 390

A.

B.

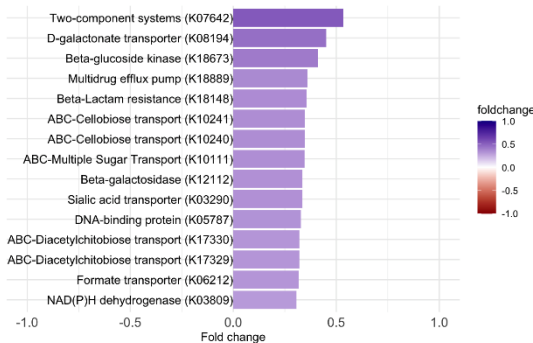


**Figure 2: Differentially abundant gut taxa and predicted gut produced enzymes as a function of DII scores.** Top 10 CSS normalized taxa (A) and all predicted pathways (B) that were identified as statistically significant differentially abundant by DII after correction by participant age, estimated gestational weeks (EGA), BMI, and food frequency questionnaire type (DHQII or VioScreen), and sample type (adjusted  $p < 0.05$  & adjusted  $p < 0.1$ ). Taxa names are lowest identifiable rank. Full list of enriched ASVs can be found in **Table S1**. *PWY-7376*: Cob(II)yrinate a,c-diamide biosynthesis II; *METHGLYUT-PWY*: methylglyoxal detoxification super pathway.

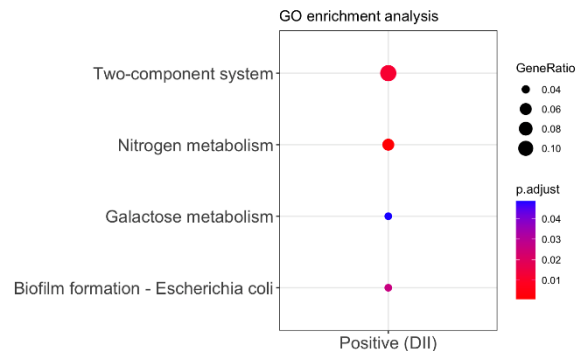
391

392

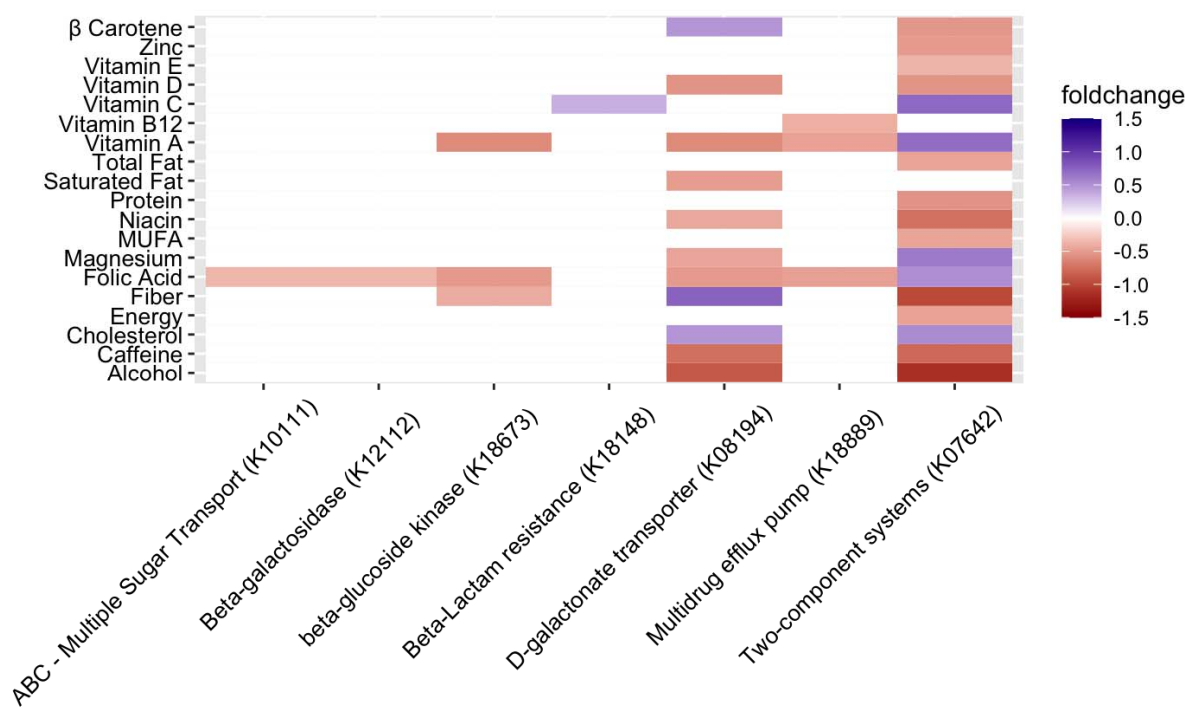
**A.**



**B.**



**Figure 3: Predicted microbial gene sets enrichment analysis in terms of DII scores.** A: Top 15 predicted enzymes that were identified as differentially abundant by DII (adjusted  $p < 0.05$ ). B: Gene set enrichment of enzymes grouped by those positively ( $N=194$ ,  $p < 0.05$ ) associated with DII score. Full list of enriched enzymes can be found in **Table S2**. Full list of enzymes by gene set term can be found in **Table S3**.



**Figure 4: Relationship between predicted enriched enzymes and dietary components.** Differential abundance of top 15 predicted enzymes and the 27 dietary components of the DII (adjusted  $p < 0.05$ ). Only significant associations are represented.

393

394

395

396 **Supplementary Materials**

397 **Supplemental Table 1: DII differentially abundant ASVs using zero-inflated**  
398 **generalized linear models.** Corrected by subject age, gestational weeks, sample type,  
399 FFQ type, and BMI (adjusted p-value < 0.05).

400 *Attached excel file*

401

402 **Supplemental Table 2: DII differentially abundant microbial enzymes using zero-**  
403 **inflated generalized linear models.** Corrected by subject age, gestational weeks,  
404 sample type, FFQ type, and BMI. Microbial enzymes were all increased (N=38) by DII.  
405 We employed the KEGG database as a reference.

406 *Attached excel file*

407

408 **Supplemental Table 3: Microbial enzymes per term identified by Gene set**  
409 **enrichment by DII.** Microbially enzymes that were positively associated with DII before  
410 multiple comparison adjustments (N=194).

411 *Attached excel file*

412

413

414

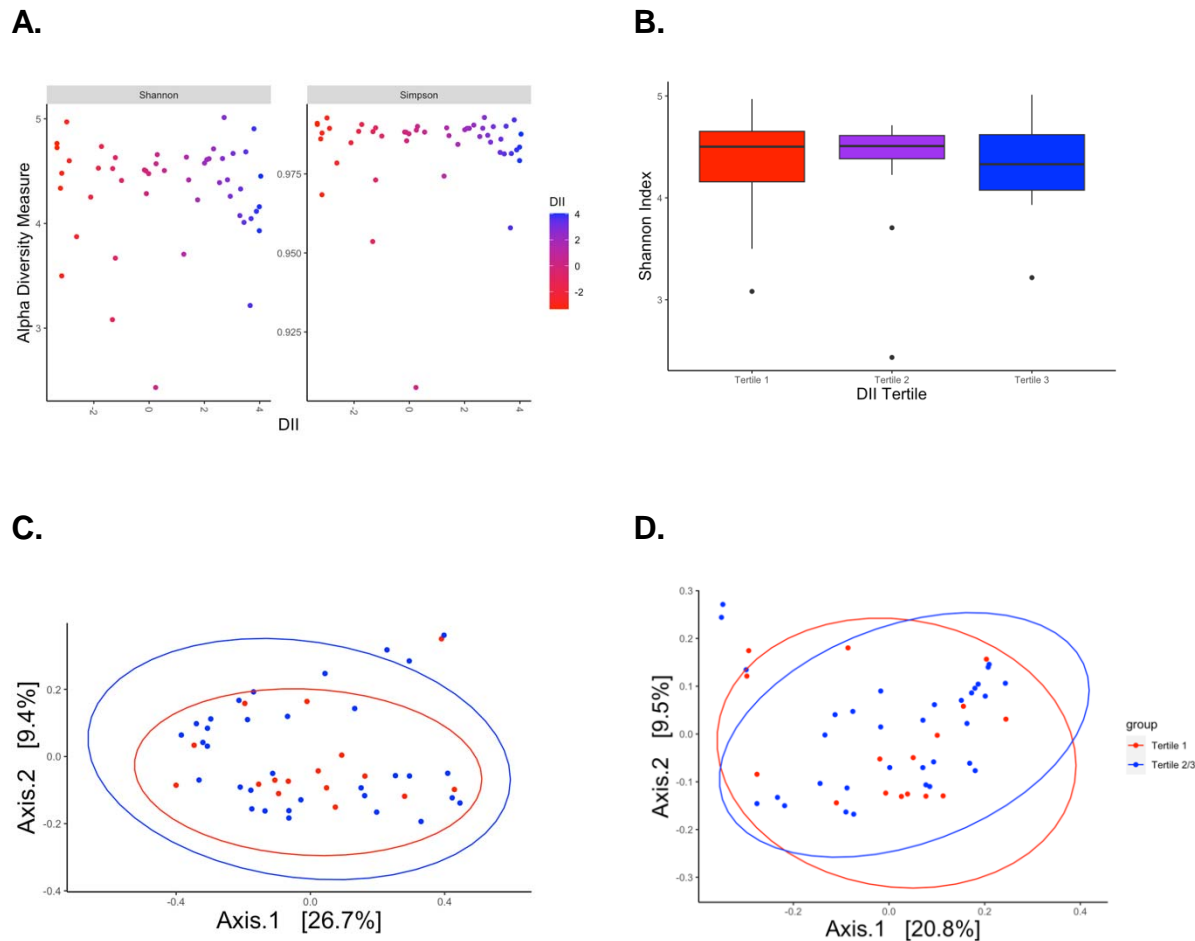
415

416

417



418



**E.**

**Supplemental Figure 1: Alpha and beta diversity were not associated with assessment by DII score. A:** Shannon and Simpson indexes as a function of DII scores. **B:** DII tertile (Wilcox Rank Sum p-value > 0.05). **C:** Beta diversity measured by Bray Curtis distance as a function of DII tertiles (PERMANOVA, p-value > 0.05). **D:** Beta diversity measured by UniFrac distance. Ellipses represent Tertile 1 and Tertile 2/3.

419