

Title

SLCO1B1 functional variants and statin-induced myopathy in people with recent genealogical ancestors from Africa: a population-based real-world study.

Short title

SLCO1B1, statin-induced myopathy, and recent African ancestry

Authors

Sook Wah Yee*¹, Tanushree Haldar*², Mark Kvale², Jia Yang¹, Michael P Douglas³, Akinyemi Oni-Orisan*^{1,2,3}

Affiliations

¹Department of Bioengineering and Therapeutic Sciences, University of California San Francisco, San Francisco, California, USA

²Institute for Human Genetics, University of California San Francisco, San Francisco, California, USA

³Department of Clinical Pharmacy, University of California San Francisco, San Francisco, California, USA

*Contributed equally

Word count

Abstract: 274 of 275; main: 3,143 of 3,500

Corresponding author

Akinyemi Oni-Orisan, PharmD, PhD

UCSF Box 0622, 521 Parnassus Avenue, Room 3602, San Francisco, CA 94117

Akinyemi.Oni-Orisan@ucsf.edu

Abstract

Background: Clinical pharmacogenetic implementation guidelines for statin therapy are derived from evidence of primarily Eurocentric study populations. Functional *SLCO1B1* variants that are rare in these study populations have not been investigated as a determinant of statin myotoxicity and are thus missing from guideline inclusion.

Objective: Determine the relationship between candidate functional *SLCO1B1* variants and statin-induced myopathy in people with recent genealogical ancestors from Africa.

Design: Population-based pharmacogenetic study using real-world evidence from electronic health record-linked biobanks

Setting: Various health care settings

Participants: Self-identified white and Black statin users with genome-wide genotyping data available.

Measurements: Primarily, the odds of statin-induced myopathy + rhabdomyolysis. Secondly, total bilirubin levels. Thirdly, cell-based functional assay results.

Results: Meta-analyses results demonstrated an increased risk of statin-induced myopathy + rhabdomyolysis with c.481+1G>T (odds ratio [OR] = 3.27, 95% confidence interval [CI] 1.43-7.46, $P=.005$) and c.1463G>C (OR = 2.45, 95% CI 1.04-5.78, $P=.04$) for Black participants. For White participants, c.521T>C was also significantly associated with increased risk of statin-induced myopathy + rhabdomyolysis (OR = 1.41, 95% CI 1.20-1.67, $P=5.4 \times 10^{-5}$). This effect size for c.521T>C was similar in the Black participants, but did not meet the level of statistical significance (OR = 1.47, 95% CI 0.58-3.73, $P=0.41$). Supporting evidence using total bilirubin as an endogenous biomarker of *SLCO1B1* function as well as from cell-based functional studies corroborated these findings.

Limitations: Data limited to severe statin myotoxicity events.

Conclusion: Our findings implicate Afrocentric *SLCO1B1* variants on preemptive pharmacogenetic testing panels, which could have an instant impact on reducing the risk of statin-associated myotoxicity in historically excluded groups.

Primary Funding Source: National Institutes of Health, Office of the Director - All of Us (OD-AoURP)

Introduction

3-Hydroxy-3-methylglutaryl coenzyme A (HMG-CoA) reductase inhibitors (more commonly known as statins) are among the most efficacious therapies for the prevention of atherosclerotic cardiovascular disease (ASCVD); however, their broader population-wide utilization is substantially hampered from the adverse drug reaction of myotoxicity(1). Pharmacogenetic findings linking elevated statin drug levels to myotoxicity suggest that these debilitating adverse drug reactions cannot be entirely attributed to a nocebo effect and that a precision medicine approach to statin selection may improve outcomes(2).

Currently, the Clinical Pharmacogenetics Implementation Consortium (CPIC) provides recommendations with the highest strength of evidence for statin prescribing based on *SLCO1B1* genetic test results (*SLCO1B1* encodes the liver-specific organic anion transporting polypeptide [OATP1B1]) to reduce the risk of myotoxicity(3). Consequently, statin pharmacogenetics is among the most common clinical pharmacogenetic implementation examples in practice(4); the inclusion of *SLCO1B1* as part of a 12-gene pharmacogenetic test panel in a landmark randomized clinical trial was a major contributor to the primary outcome showing a 30% relative risk reduction for general adverse drug reactions(5). However, the evidence for which CPIC recommendations of statins and other therapies derive from are based on largely Eurocentric study populations (i.e., participants who predominantly self-identify as White and/or derive recent ancestry from any region within the continent of Europe)(2,6). As a result, variants known to impact OATP1B1 function that are rare in Eurocentric but common in non-Eurocentric groups (i.e., one or more of the diverse groups that do not fit the above definition of Eurocentric) have not been investigated as a determinant of statin myotoxicity and are thus missing from guideline inclusion.

Taken together, these findings demonstrate that pharmacogenetic tests for statin therapy are not providing equitable benefit in preventing the risk of adverse drug reactions. Enhanced investigation in non-Eurocentric groups will generate the evidence base necessary for more inclusive pharmacogenetic prescribing guidelines. The objective of this study was to determine the relationship between candidate functional *SLCO1B1* variants and statin-induced myopathy in people with recent genealogical ancestors from Africa.

Methods

Data Resources.

We conducted our studies using de-identified, individual-level, population-based data capturing the health of participants from three independent electronic health record-linked biobanks (each with genome-wide genotype data): the National Institutes of Health (NIH) All Of Us research program (AoURP), the Genetic Epidemiology Research on Adult Health and Aging (GERA) Cohort, and the UK Biobank (UKB). Institutional Review Board (IRB) approval was obtained from both Kaiser Permanente (Mid-Atlantic States Region) and the University of California. Participants gave written informed consent. See Supplementary Material for further details.

Dataset Types.

Within each data resource, we used electronic health record, self-administered survey, physical measurement, and genomic data. Further details are available in the Supplementary Material.

Justification for the use of population descriptors in genetic studies.

Participants who self-identified as white or Black were included in the study. The selection of these descriptors were carefully chosen and in concordance with guidance from the National Academies of Sciences, Engineering, and Medicine(7). It was critical to have these groups in order to showcase the disparity, as previously done in similar studies for health disparities precision medicine research(8). Further details are available in the Discussion as well as the Supplementary Material. The specific definition for these race categories in each cohort are described in the Data Resources section of the Supplementary Material.

Genotype.

Consistent with the objective of this study, we selected candidate *SLCO1B1* variants with evidence of mechanistic function that are common (> 1% allele frequency) in at least one of the many groups within the African (AFR) superpopulation of the 1000 Genomes data set (available through the online gnomAD browser: <https://gnomad.broadinstitute.org/>). A systematic search identified 3 variants that met these criteria: missense variant reference single nucleotide polymorphism(rs)4149056 (c.521T>C, OATP1B1-Val174Ala), missense variant rs59502379 (c.1463G>C, OATP1B1-Gly488Ala), and loss-of-function splice variant rs77271279 (c.481+1G>T). Each of them happened to have evidence for reduced OATP1B1 function. Further details are available in the Supplementary Material.

Phenotype (statin-induced myotoxicity).

We generated a phenotype for severe statin-induced myotoxicity, as previously described(9) with modifications. Further details are available in the Methods section and Supplemental Table 1 of the Supplementary Material.

Phenotype (bilirubin levels).

As a secondary outcome to support our primary objective, we used total bilirubin levels, an endogenous biomarker for OATP1B1 activity(10). Further details are available in the Supplementary Material.

Cell-based assay studies.

We conducted *in vitro* mechanistic studies to support our population-based studies and extend the current functional evidence for our *SLCO1B1* variants of interest. See Supplementary Material for details.

Statistical Analysis.

We determined the relationship between our candidate *SLCO1B1* variants (c.521T>C, c.481+1G>T, c.1463G>C) and statin-induced myopathy + rhabdomyolysis using multiple logistic regression in race-stratified groups from both cohorts with drug response phenotypes (AoURP, GERA). Participant age and self-identified sex at birth were included as covariates. Our primary analyses were meta-analyses across cohorts using a fixed-effects model of the relationship within each race strata for all statin types combined. For our secondary analyses, we investigated the association between each of our variants and total bilirubin levels in self-identified Black participants (UKB, AoURP). To do this, we performed a linear regression model on log₁₀-transformed total bilirubin levels. Age, sex, body mass index, and 10 principal components of AFR-specific genetic similarity were included as covariates. We also conducted a sensitivity analysis by limiting the study population to the subset with total bilirubin levels within the range of normal (1.71-20.50 micromoles per liter for UKB and 0.1-1.2 milligrams per deciliter for

AoURP). All analyses were conducted using R software (version 4.3.1; R Foundation for Statistical Computing; www.R-project.org; Vienna, Austria). Regression models were constructed using the 'glm' function in R. We used the metafor R package for our meta-analyses. STROBE guidelines were followed for reporting results. Differences in transporter uptake and cytotoxicity for our cell-based studies were tested by one-way analysis of variance (ANOVA) followed by Tukey's multiple comparison tests. *P* values < 0.05 were considered statistically significant.

Role of the Funding Source.

This study was funded by the National Institutes of Health and the Office of the Director - All of Us (OD-AoURP). These sponsors did not have any role in the study design, conduct, or reporting.

Results

Characterization of the study population

A total of 555 statin-induced myopathy + rhabdomyolysis cases (200 myopathy + 355 rhabdomyolysis) met the criteria of study inclusion for our primary analysis. Among these, 71 identified as Black and 484 identified as white. Low allele frequencies for c.1463G>C and c.481+1G>T in white participants precluded subsequent analyses for those variants in this subset of the study population. Supplemental Table 2 provides more details for this population.

The relationship between *SLCO1B1* variants and statin-induced myopathy + rhabdomyolysis.

Our meta-analyses results demonstrated an increased risk of statin-induced myopathy + rhabdomyolysis with c.481+1G>T (odds ratio [OR] = 3.27, 95% confidence interval [CI] 1.43-7.46, *P*=.005) and c.1463G>C (OR = 2.45, 95% CI 1.04-5.78, *P*=.04) for Black participants (Table 1). For White participants, c.521T>C was also significantly associated with increased risk of statin-induced myopathy + rhabdomyolysis (OR = 1.41, 95% CI 1.20-1.67, *P*=5.4x10⁻⁵). This effect size for c.521T>C was similar in the Black participants, but did not meet the level of statistical significance (OR = 1.47, 95% CI 0.58-3.73, *P*=0.41). Cohort-specific results are displayed in Table 1.

The relationship between *SLCO1B1* variants and total bilirubin levels.

A total of 29,119 self-identified Black participants from UKB met the study inclusion criteria for the secondary analysis (6,651 from UKB and 22,468 from AoURP). Baseline characteristics in this total bilirubin study population are shown in Supplemental Table 3. All three variants of interest were associated with elevated total bilirubin levels. The strongest association was observed for c.481+1G>T (beta = 0.13, *p*=1.1x10⁻⁹) followed by c.1463G>C (beta = 0.08, *p*=6.5x10⁻⁶) and c.521T>C (beta=0.05, *p*=0.024). Consistent results were observed from AoURP (Supplemental Table 4). Sensitivity analyses also showed a similar association (Supplemental Table 5).

Cell-based mechanistic studies for OATP1B1-Val174Ala and OATP1B1-Gly488Ala.

Our HEK293T landing cells transiently overexpressing OATP1B1 reference, OATP1B1-Val174Ala, and OATP1B1-Gly488Ala showed significantly greater green fluorescent protein (GFP) abundance compared to HEK293T landing cells without GFP expression (Figure 1A). Additionally, the OATP1B1-Val174Ala and OATP1B1-Gly488Ala missense variants exhibited similar GFP abundance when compared to OATP1B1

reference (Figure 1A). Moreover, OATP1B1 reference, OATP1B1-Val174Ala, and OATP1B1-Gly488Ala each had plasma membrane GFP expression (Figure 1B).

Despite similar GFP expression compared to OATP1B1 reference, the missense variants demonstrated significantly reduced intracellular fluorescence as well as reduced uptake of both estrone sulfate and estradiol-17 β -glucuronide (Figures 1A, 1D, 1E). Furthermore, only OATP1B1-Gly488Ala showed mixed localization of GFP abundance on the plasma membrane and intracellularly (Figure 1B). There was a slight reduction of OATP1B1-Gly488Ala on the plasma membrane compared to OATP1B1-Val174Ala. Accordingly, OATP1B1-Gly488Ala cells showed a reduced uptake of estrone-sulfate and less cytotoxicity to rosuvastatin (Figure 1C and 1E) compared to OATP1B1-Val174Ala. However, the uptake of estradiol-17 β -glucuronide was not significantly different between OATP1B1-Val174Ala and OATP1B1-Gly488Ala (Figure 1D).

Discussion

This investigation is the first to demonstrate the clinical validity for statin-induced myopathy of variants that are common in genealogical ancestors from Africa. Using electronic health record-linked biobanks, we generated the largest cohort of statin-induced myopathy in study populations of self-identified Black participants. Using this cohort and matched controls, we found that two functional *SLCO1B1* variants extremely rare in Eurocentric groups were strongly associated with this adverse drug reaction, an effect of greater magnitude than our results for the well-established c.521T>C variant within any group. We reinforced the importance of these Afrocentric (AFR-specific) variants using clinical studies for an endogenous biomarker of OATP1B1 as well as cell-based functional studies. Considering the magnitude of effect for these variants and the unprecedented size of the study population for our primary statin response analysis as well as our strong supporting evidence, our translational findings provide strong rationale for the inclusion of these variants on pharmacogenetic testing panels.

Adverse drug reactions are a common, underappreciated cause of morbidity and mortality; two million hospitalizations each year in the United States are caused by these events according to the Department of Health and Human Services. Pharmacogenetics is widely considered an effective tool to combat some adverse drug reactions, especially for events unrelated to prescribing errors (e.g., adverse drug reactions that occur despite a drug being taken at the recommended normal dose). Considering that 1) the vast majority of patients undergoing routine care (>90%) carry at least one pharmacogenetic variant that would warrant a change in therapy to avoid an adverse drug reaction(11) and that 2) preemptive pharmacogenetic prescribing has demonstrated efficacy in reducing the relative risk of adverse drug reactions by almost one third(5), the universal implementation of this precision medicine approach to pharmacotherapeutic prescribing shows great promise in improving health outcomes on a large scale. As a consequence, preemptive genotyping, which allows clinicians to have the genetic data at the time of drug prescribing, is gaining wider acceptance and increased coverage by insurance plans(12,13).

However, there is also a growing concern among clinicians and scientists that, if not done carefully, the implementation of precision medicine tools has the potential to exacerbate preexisting health disparities(14). In particular, taking results from Eurocentric study populations and applying them to non-Eurocentric groups (without considering that average results vary between stratified groups) has the potential to cause harm(15). Conducting analyses in genetically diverse study populations and considering all the factors that impact disparities are proposed solutions to prevent further exacerbation(16).

For example, one study found that using a normal range for absolute neutrophil count (“normal” is based on results from Eurocentric study populations) to guide azathioprine immunosuppressant therapy (a standard of care practice in United States health systems) leads to disproportionately higher rates of unnecessary therapeutic discontinuation in Black patients. Even after adjusting for non-genetic factors, this disparity was attributed entirely to an *ACKR1* variant (present in > 80% of Black and <0.5% of white participants, gnomad.broadinstitute.org), a variant associated with low (relative to “normal”) but safe neutrophil counts(8). Findings suggest that pharmacogenetic testing for *ACKR1* in all patients to guide azathioprine therapy may prevent the exacerbation of this disparity, which already exists for reasons unrelated to pharmacogenetics(17). Importantly, this potential exacerbation would never have been discovered if the investigators did not stratify groups with the use of population descriptors (90% of the study population was White, which would have diluted results in a pooled analysis). Similarly, another study found that a Eurocentric precision medicine tool for warfarin dosing led to less accurate anti-coagulation in the subset of the study population who were Black(18). Accounting for pharmacogenetic variants not commonly found in Eurocentric study populations improved dosing for Black participants(19,20). These are just a couple of many other examples (21–24) demonstrating the usefulness of population descriptors to identify potential precision-medicine relevant health disparity exacerbations that otherwise could never be discovered.

The potential for exacerbation of existing health disparities from precision medicine is no different for statin therapy. It’s already known that racial disparities in the use of statin therapy exist, an observation thought to be attributable to implicit racism(25). Thus, it would be important that statin precision medicine tools designed to prevent myotoxicity and thereby promote continued therapeutic use would work equitably across multiple groups of people. This is especially true considering that statins are consistently among the most commonly chosen medication classes included in clinical pharmacogenetic implementation programs(5,12) and are among the most “actionable” (i.e., patients taking statins are carriers of genotypes for which guidelines would suggest a therapeutic regimen change)(5). CPIC guidelines recommend (with level A evidence: the highest classification rating) specific statin types and doses for people with OATP1B1 decreased or poor function phenotype for who the drug is indicated(3). Presumably, considering the strength of the recommendation, this pharmacogenetic test should benefit everyone. However, the guidelines dictate that the OATP1B1 phenotype should be determined only by haplotypes containing c.521T>C (e.g., *5 and *15), which have lower allele frequency in people with recent genealogical ancestors from Africa (<0.5% prevalence in multiple groups within the African superpopulation including ESN, YRI, GWD, and MSL) including self-identified Black Americans. This suggests that the currently recommended *SLCO1B1*-based pharmacogenetic test may be less beneficial in people with recent genealogical ancestors from Africa. Our results replicated these allele frequencies and validated the hypothesis that this pharmacogenetic test does not benefit groups equitably on a population-wide scale.

In contrast to c.521T>C, there are *SLCO1B1* variants that are rare in Eurocentric study populations. In particular, two *SLCO1B1* polymorphisms (missense variant c.1463G>C and splice donor c.481+1G>T) are each independently associated with levels of endogenous OATP1B1 substrates and have mechanistic evidence for reduced transport function(26–29). These variants were discovered in Afrocentric study populations and are only common (>1% allele frequency) in people with recent genealogical ancestors from Africa (e.g., subpopulations from multiple regions within and outside of Africa including ASW, ACB, LWK, ESN, YRI, GWD, and MSL). They have been entirely understudied as pharmacogenetic markers.

We sought to provide clinical validity for these understudied variants in the context of statin-induced myopathy. We found that these variants had a strong association with severe statin-induced myotoxicity across all statin types. Notably, the clinical significance of this findings is substantial. Our reported effect sizes were stronger than what we found for the c.521T>C association with statin-induced myopathy in our Eurocentric study populations. Between the two AFR-specific variants, c.481+1G>T was the strongest; this observation is not inconsistent with the large effects observed by loss of function variants relative to missense polymorphisms. Our total bilirubin and cell-based studies support these relative effect sizes. It is also important to remark that these AFR-specific variants may have been considered too rare (<0.1%) to include if our analyses had been conducted in a pooled study population without the use of descriptors (i.e., not stratified by groups). Altogether, our findings provide evidence for the potential of these variants to prevent statin-induced myopathy events that the standard *SLCO1B1*-based pharmacogenetic test are not able to capture.

Our findings are consistent with a case study reporting atorvastatin-induced rhabdomyolysis in a “51-year-old African American male”(30). The patient carried no copies of the well-established c.521T>C polymorphism. However, he was found to carry one copy of c.481+1G>T, which was thought to be the causative factor of this adverse drug reaction. This patient was ultimately switched to a non-statin lipid lowering alternative. This clinical case further illustrates the potential of these novel pharmacogenetic variants as a preemptive test to prevent myotoxicity before statin initiation.

This case study as well as the current investigation highlights more severe statin reactions across the full spectrum of statin-induced myotoxicities. It is important to note that, even if they don’t lead to hospitalization, less severe statin-induced myotoxicity can still hamper daily activities of living(31) and increase the risk of major adverse cardiovascular outcomes (by promoting statin nonadherence)(32). Considering the demonstrated association between c.521T>C and these less severe adverse drug reactions as well as for other drugs and toxicities(33–35), the Afrocentric *SLCO1B1* variants likely would prevent these as well. However, additional studies are needed to validate this.

Altogether, our findings provide strong rationale for writing committees to recommend incorporation of Afrocentric *SLCO1B1* variants into clinical pharmacogenetic guidelines. However, considering the clinical significance of these findings and the potential immediate impact on health equity, a strong consideration (at least by health systems with established pharmacogenetic testing programs in place) should be made to implement these variants even sooner than guideline incorporation. Statin-based pharmacogenetic guidelines from CPIC, for example, are released only once every several years and were just recently released as of the writing of this paper(3). Furthermore, our combined 71 cases of severe statin-induced myotoxicity within Black participants is a similar sample size to that from the landmark study (in a Eurocentric study population)(2) for which the original CPIC recommendations(36) are based.

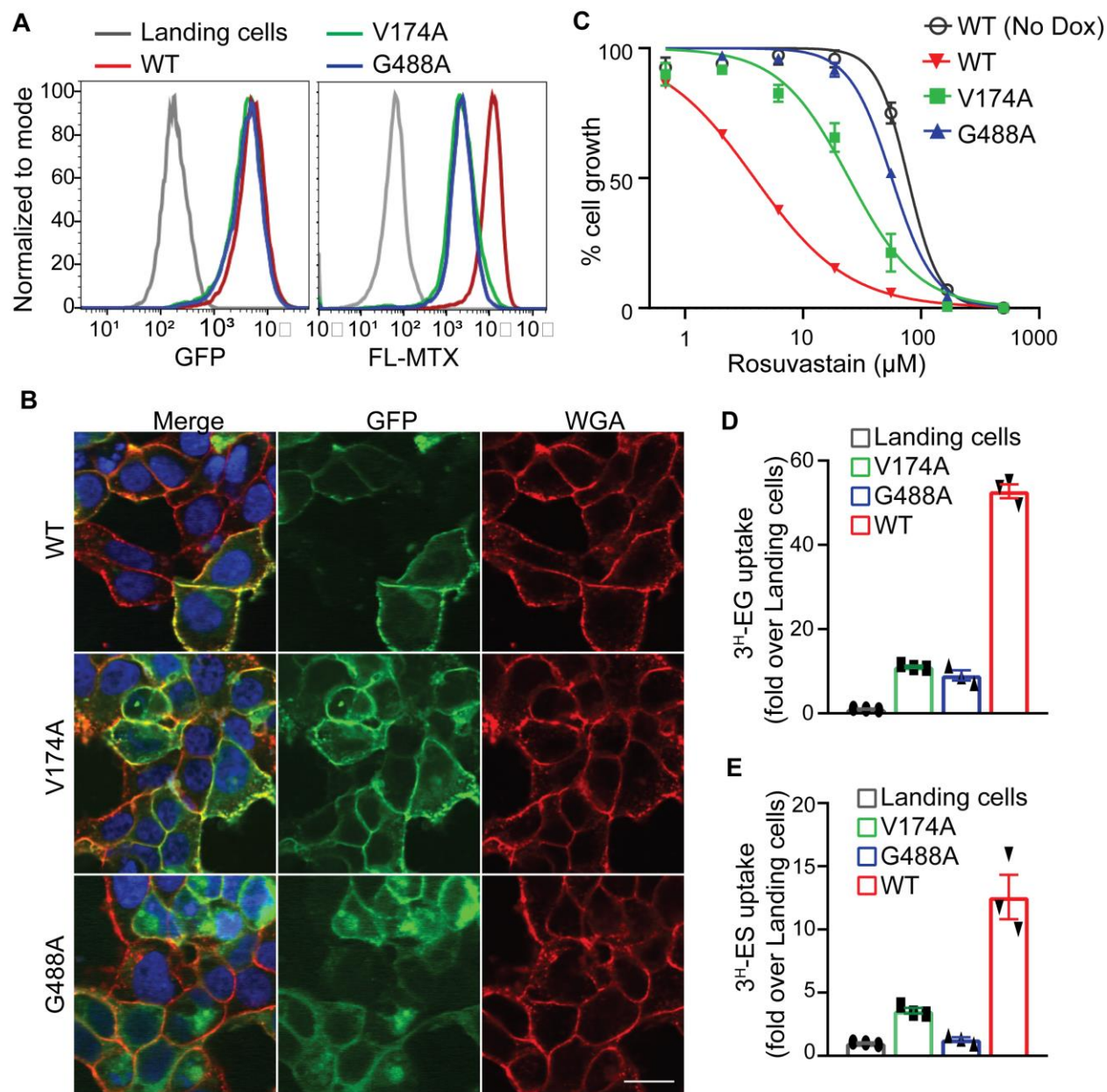
In summary, our findings implicate Afrocentric *SLCO1B1* variants on preemptive pharmacogenetic testing panels, which could have an instant impact on the risk of statin-associated myotoxicity. Most importantly, these findings set the foundation for future studies that deviate from the sole reliance on Eurocentric study populations to improve pharmacological health outcomes in all.

Acknowledgement

Research reported in this publication was supported by the National Human Genome Research Institute (R01HG012824: T.H., M.P.D., A.O.) and the National Institute of General Medical Sciences (R01GM117163: S.W.Y.; R01GM139875: K.M.G.) of the NIH as well as the OD-AoURP (which also sponsored R01HG012824: T.H., M.P.D., A.O.). The content is solely the responsibility of the authors and does not necessarily represent the official views of the National Institutes of Health or the OD-AoURP. This study was made possible through data provided by the Kaiser Permanente Division of Research Program on Genes, Environment, and Health (RPGEH) funded by the National Institute on Aging, the National Institute of Mental Health, the National Institute of Health Office of the Director, the Robert Wood Johnson Foundation, and the Kaiser Permanente Community Benefits Program. We would like to express our gratitude to the members of the All of Us Evenings with Genetics Research Team at Baylor College of Medicine, particularly Drs. J. Wang and S.E. Scherer, for their valuable contributions and support throughout this research endeavor.

Figures

Figure 1. Functional characterizations of two missense variants in OATP1B1. (A) OATP1B1 reference (WT) and the two missense OATP1B1 variants (V174A and G488A) had similar green fluorescent protein (GFP) expression as well as levels greater than that of HEK293T landing cells without GFP (left). OATP1B1 WT has increased uptake of OATP1B1 substrate fluoresceine-methotrexate (FL-MTX) compared to the missense variants (right). (B) Cellular localization of GFP-tagged OATP1B1 WT and V174A has overlap with the plasma membrane marker wheat germ agglutinin (WGA; red). OATP1B1 G488A showed weaker expression on the plasma membrane and some intracellular localization. (C) Cytotoxicity of rosuvastatin was greatest in HEK293T landing pad cells stably transfected with OATP1B1 WT (red), followed by OATP1B1-V174A (green) then OATP1B1-G488A (blue) compared to cells without OATP1B1 (open circle). Both missense OATP1B1 variants ((V174A and G488A) showed significantly reduced uptake of radioligands (D) [3H]-estradiol-17beta-glucuronide (EG) and (E) [3H]-esterone sulfate (ES) compared to OATP1B1 WT.



Tables

Table 1. Relationship¹ between candidate functional *SLCO1B1* variants and statin-induced myopathy + rhabdomyolysis

<i>SLCO1B1</i> variant	Analysis group ²	Cohort	n (case/control)	Beta	SE	Odds Ratio	95% CI	P-value
c.481+1G>T	Black	Meta-analysis	71/702	1.18	0.42	3.27	1.43-7.46	0.0049
		AoURP	31/310	1.17	0.52			
		GERA	40/392	1.20	0.70			
c.1463G>C	Black	Meta-analysis	71/702	0.90	0.44	2.45	1.04-5.78	0.040
		AoURP	31/310	1.19	0.46			
		GERA	40/392	-1.90	1.41			
c.521T>C	Black	Meta-analysis	71/702	0.39	0.47	1.47	0.58-3.73	0.41
		AoURP	31/310	-0.88	1.04			
		GERA	40/392	0.72	0.53			
c.521T>C	White	Meta-analysis	484/4,840	0.35	0.09	1.41	1.20-1.67	5.35x10 ⁻⁵
		AoURP	38/380	0.40	0.32			
		GERA	446/4,460	0.34	0.09			

¹Generated by logistic regression. Covariates included age and sex at birth. Meta-analyses used a fixed-effects model.

²Self-identified race

AoURP, All of Us Research Program; CI, confidence interval; GERA, Genetic Epidemiology Research on Adult Health and Aging; SE, standard error

References

1. Vinci P, Panizon E, Tosoni LM, Cerrato C, Pellicori F, Mearelli F, et al. Statin-Associated Myopathy: Emphasis on Mechanisms and Targeted Therapy. *Int J Mol Sci*. 2021 Oct 28;22(21).
2. SEARCH Collaborative Group, Link E, Parish S, Armitage J, Bowman L, Heath S, et al. SLCO1B1 variants and statin-induced myopathy--a genomewide study. *N Engl J Med*. 2008 Aug 21;359(8):789–99.
3. Cooper-DeHoff RM, Niemi M, Ramsey LB, Luzum JA, Tarkiainen EK, Straka RJ, et al. The Clinical Pharmacogenetics Implementation Consortium Guideline for SLCO1B1, ABCG2, and CYP2C9 genotypes and Statin-Associated Musculoskeletal Symptoms. *Clin Pharmacol Ther*. 2022 May;111(5):1007–21.
4. Oni-Orisan A, Tuteja S, Hoffecker G, Smith DM, Castrichini M, Crews KR, et al. An introductory tutorial on cardiovascular pharmacogenetics for healthcare providers. *Clin Pharmacol Ther*. 2023 Aug;114(2):275–87.
5. Swen JJ, van der Wouden CH, Manson LE, Abdullah-Koolmees H, Blagec K, Blagus T, et al. A 12-gene pharmacogenetic panel to prevent adverse drug reactions: an open-label, multicentre, controlled, cluster-randomised crossover implementation study. *Lancet*. 2023 Feb 4;401(10374):347–56.
6. Carr DF, Francis B, Jorgensen AL, Zhang E, Chinoy H, Heckbert SR, et al. Genomewide Association Study of Statin-Induced Myopathy in Patients Recruited Using the UK Clinical Practice Research Datalink. *Clin Pharmacol Ther*. 2019 Dec;106(6):1353–61.
7. National Academies of Sciences, Engineering, and Medicine; Division of Behavioral and Social Sciences and Education; Health and Medicine Division; Committee on Population; Board on Health Sciences Policy; Committee on the Use of Race, Ethnicity, and Ancestry as Population Descriptors in Genomics Research. Using population descriptors in genetics and genomics research: A new framework for an evolving field. Washington (DC): National Academies Press (US); 2023.
8. Dickson AL, Daniel LL, Jackson E, Zanussi J, Yang W, Plummer WD, et al. Race, genotype, and azathioprine discontinuation : A cohort study. *Ann Intern Med*. 2022 Aug;175(8):1092–9.
9. Lu B, Sun L, Seraydarian M, Hoffmann TJ, Medina MW, Risch N, et al. Effect of SLCO1B1 T521C on Statin-Related Myotoxicity With Use of Lovastatin and Atorvastatin. *Clin Pharmacol Ther*. 2021 Sep;110(3):733–40.
10. van de Steeg E, Stránecký V, Hartmannová H, Nosková L, Hřebíček M, Wagenaar E, et al. Complete OATP1B1 and OATP1B3 deficiency causes human Rotor syndrome by interrupting conjugated bilirubin reuptake into the liver. *J Clin Invest*. 2012 Feb;122(2):519–28.
11. Van Driest SL, Shi Y, Bowton EA, Schildcrout JS, Peterson JF, Pulley J, et al. Clinically actionable genotypes among 10,000 patients with preemptive pharmacogenomic testing. *Clin Pharmacol Ther*. 2014 Apr;95(4):423–31.

12. Luzum JA, Pakyz RE, Elsey AR, Haidar CE, Peterson JF, Whirl-Carrillo M, et al. The pharmacogenomics research network translational pharmacogenetics program: outcomes and metrics of pharmacogenetic implementations across diverse healthcare systems. *Clin Pharmacol Ther.* 2017 Sep;102(3):502–10.
13. Jarvis JP, Peter AP, Keogh M, Baldasare V, Beanland GM, Wilkerson ZT, et al. Real-World Impact of a Pharmacogenomics-Enriched Comprehensive Medication Management Program. *J Pers Med.* 2022 Mar 8;12(3).
14. Martin AR, Kanai M, Kamatani Y, Okada Y, Neale BM, Daly MJ. Clinical use of current polygenic risk scores may exacerbate health disparities. *Nat Genet.* 2019 Apr;51(4):584–91.
15. Oni-Orisan A, Mavura Y, Banda Y, Thornton TA, Sebros R. Embracing genetic diversity to improve black health. *N Engl J Med.* 2021 Mar 25;384(12):1163–7.
16. Kehinde O, Ramsey LB, Gaedigk A, Oni-Orisan A. Advancing CYP2D6 Pharmacogenetics through a Pharmacoequity Lens. *Clin Pharmacol Ther.* 2023 Jul;114(1):69–76.
17. Nguyen GC, LaVeist TA, Harris ML, Wang M-H, Datta LW, Brant SR. Racial disparities in utilization of specialist care and medications in inflammatory bowel disease. *Am J Gastroenterol.* 2010 Oct;105(10):2202–8.
18. Kimmel SE, French B, Kasner SE, Johnson JA, Anderson JL, Gage BF, et al. A pharmacogenetic versus a clinical algorithm for warfarin dosing. *N Engl J Med.* 2013 Dec 12;369(24):2283–93.
19. Lindley KJ, Limdi NA, Cavallari LH, Perera MA, Lenzini P, Johnson JA, et al. Warfarin dosing in patients with CYP2C9*5 variant alleles. *Clin Pharmacol Ther.* 2022 Apr;111(4):950–5.
20. Cavallari LH, Langaee TY, Momary KM, Shapiro NL, Nutescu EA, Coty WA, et al. Genetic and clinical predictors of warfarin dose requirements in African Americans. *Clin Pharmacol Ther.* 2010 Apr;87(4):459–64.
21. Pardiñas AF, Kappel DB, Roberts M, Tipple F, Shitomi-Jones LM, King A, et al. Pharmacokinetics and pharmacogenomics of clozapine in an ancestrally diverse sample: a longitudinal analysis and genome-wide association study using UK clinical monitoring data. *Lancet Psychiatry.* 2023 Mar;10(3):209–19.
22. Wu AH, White MJ, Oh S, Burchard E. The Hawaii clopidogrel lawsuit: the possible effect on clinical laboratory testing. *Per Med.* 2015 Jun;12(3):179–81.
23. Hoshitsuki K, Crews KR, Yang W, Smith CA, Hankins JS, Turner AJ, et al. Challenges in clinical implementation of CYP2D6 genotyping: choice of variants to test affects phenotype determination. *Genet Med.* 2020 Jan;22(1):232–3.
24. Jordan IK, Sharma S, Mariño-Ramírez L. Population pharmacogenomics for health equity. *Genes (Basel).* 2023 Sep 22;14(10).
25. Frank DA, Johnson AE, Hausmann LRM, Gellad WF, Roberts ET, Vajravelu RK. Disparities in Guideline-Recommended Statin Use for Prevention of Atherosclerotic Cardiovascular Disease by

- Race, Ethnicity, and Gender : A Nationally Representative Cross-Sectional Analysis of Adults in the United States. *Ann Intern Med.* 2023 Aug;176(8):1057–66.
26. Yee SW, Giacomini MM, Hsueh CH, Weitz D, Liang X, Goswami S, et al. Metabolomic and Genome-wide Association Studies Reveal Potential Endogenous Biomarkers for OATP1B1. *Clin Pharmacol Ther.* 2016 Nov;100(5):524–36.
 27. Tirona RG, Leake BF, Merino G, Kim RB. Polymorphisms in OATP-C: identification of multiple allelic variants associated with altered transport activity among European- and African-Americans. *J Biol Chem.* 2001 Sep 21;276(38):35669–75.
 28. Yu B, Li AH, Metcalf GA, Muzny DM, Morrison AC, White S, et al. Loss-of-function variants influence the human serum metabolome. *Sci Adv.* 2016 Aug 31;2(8):e1600800.
 29. Luo S, Feofanova EV, Tin A, Tung S, Rhee EP, Coresh J, et al. Genome-wide association study of serum metabolites in the African American Study of Kidney Disease and Hypertension. *Kidney Int.* 2021 Aug;100(2):430–9.
 30. Kiage J, Venkatanarayan A, Roth M, Elam M. Atorvastatin-associated rhabdomyolysis in a patient with a novel variant of the SLCO1B1 gene: A case report. *J Clin Lipidol.* 2022;16(1):23–7.
 31. Bruckert E, Hayem G, Dejager S, Yau C, Bégaud B. Mild to moderate muscular symptoms with high-dosage statin therapy in hyperlipidemic patients--the PRIMO study. *Cardiovasc Drugs Ther.* 2005 Dec;19(6):403–14.
 32. Gomez Sandoval Y-H, Braganza MV, Daskalopoulou SS. Statin discontinuation in high-risk patients: a systematic review of the evidence. *Curr Pharm Des.* 2011 Nov;17(33):3669–89.
 33. Ramsey LB, Panetta JC, Smith C, Yang W, Fan Y, Winick NJ, et al. Genome-wide study of methotrexate clearance replicates SLCO1B1. *Blood.* 2013 Feb 7;121(6):898–904.
 34. Varenhorst C, Eriksson N, Johansson Å, Barratt BJ, Hagström E, Åkerblom A, et al. Effect of genetic variations on ticagrelor plasma levels and clinical outcomes. *Eur Heart J.* 2015 Aug 1;36(29):1901–12.
 35. Donnelly LA, Doney ASF, Tavendale R, Lang CC, Pearson ER, Colhoun HM, et al. Common nonsynonymous substitutions in SLCO1B1 predispose to statin intolerance in routinely treated individuals with type 2 diabetes: a go-DARTS study. *Clin Pharmacol Ther.* 2011 Feb;89(2):210–6.
 36. Wilke RA, Ramsey LB, Johnson SG, Maxwell WD, McLeod HL, Voora D, et al. The clinical pharmacogenomics implementation consortium: CPIC guideline for SLCO1B1 and simvastatin-induced myopathy. *Clin Pharmacol Ther.* 2012 Jul;92(1):112–7.