

**Title:** Antibody Mediated Rejection is not Associated with Worse Survival in Adherent Heart Transplant Patients in the Contemporary Era

**Short Title:** Positive C4d and DSA in Heart Transplant

**Authors:** Paul J. Kim,<sup>1\*</sup> Vincenzo Cusi,<sup>1\*</sup> Ashley Cardenas,<sup>2</sup> Yuko Tada,<sup>1</sup> Florin Vaida,<sup>3</sup> Nicholas Wettersten,<sup>4</sup> Jennifer Chak,<sup>1</sup> Priyasha Bijlani,<sup>1</sup> Victor Pretorius,<sup>5</sup> Marcus Anthony Urey,<sup>1</sup> Gerald P. Morris,<sup>2</sup> Grace Lin<sup>2</sup>

**ORCID IDs:** Paul J. Kim, MD, MAS: 0000-0002-1755-6182; Vincenzo Cusi, BS: 0000-0001-9681-6896; Ashley Cardenas, MD: 0009-0007-9012-1445; Yuko Tada, MD, PhD: 0000-0003-1410-9894; Florin Vaida, PhD: 0000-0002-2256-4611; Nicholas Wettersten, MD: 0000-0002-6122-1152; Jennifer Chak: 0009-0005-5828-1049; Priyasha Bijlani, MD: 0000-0002-9996-6686; Victor Pretorius, MBChB: 0000-0001-6360-4002; Marcus Anthony Urey, MD: 0000-0001-8311-5003; Gerald P. Morris, MD, PhD: 0000-0002-1097-4453; Grace Lin, MD, PhD: 0000-0001-8018-5604

\*PJK and VC contributed equally.

**Affiliations:** 1. UC San Diego Health, San Diego, CA. 2. Department of Pathology, University of California, San Diego, California, USA 3. Department of Family Medicine and Public Health, UC San Diego, La Jolla, CA. 4. Cardiology Section, Veterans Affairs San Diego Healthcare System, San Diego, CA. 5. Division of Cardiovascular and Thoracic Surgery, Department of Surgery, University of California, San Diego, California, USA

**Author contributions:**

PJK: conceptualization, writing, review and editing, data curation, adjudication of clinical outcomes, project administration; VC: writing, review and editing, data curation, project administration; AC: conceptualization, writing, data curation; YT: writing, review and editing, data curation, adjudication of clinical outcomes; FV: writing, reviewing, editing, and statistical analyses; NW: writing, review and editing, data curation, adjudication of clinical outcomes; JC: writing, review and editing, data curation; PB: writing, review and editing, data curation; VP: writing, review and editing; MAU: writing, review and editing; GPM: writing, review, and editing, project administration; GL: conceptualization, writing, review and editing, project administration.

**Address for Correspondence:**

Paul Kim, MD  
Division of Cardiovascular Medicine  
Department of Medicine  
UC San Diego Health

9452 Medical Center Drive, MC 7411  
La Jolla, CA 92037  
E-mail: `pjk017 at health dot ucsd dot edu`

## **Non-standard Abbreviations and Acronyms**

ACR, Acute cellular rejection

AMR, Antibody mediated rejection

CAV, Cardiac allograft vasculopathy

DSA, Donor-specific antibody

ECMO, Extracorporeal membrane oxygenation

EMB, Endomyocardial biopsy

HLA, Human leukocyte antigen

HTx, Heart transplantation

ISHLT, International Society for Heart and Lung Transplantation

LVEF, Left ventricular ejection fraction

pAMR, Pathologic antibody mediated rejection

PRA, Panel of reactive antibodies

PHM, Predicted heart mass

UC San Diego Health, University of California, San Diego Health

## **Abstract:**

### **Background:**

C4d immunostaining of surveillance endomyocardial biopsies (EMB) and testing for donor specific antibodies (DSA) are routinely performed in the first year of heart transplantation (HTx) in adult patients. C4d and DSA positivity have not been evaluated together with respect to clinical outcomes in the contemporary era (2010–current).

### **Methods:**

This was a single center, retrospective study of consecutive EMBs performed between November 2010 and April 2023. The primary objective was to determine whether history of C4d and/or DSA positivity could predict death, cardiac death, or retransplant. Secondary analyses included cardiac allograft dysfunction and cardiac allograft vasculopathy. Cox proportional hazards models were used for single predictor and multipredictor analyses.

### **Results:**

A total of 6,033 EMBs from 519 HTx patients were reviewed for the study. There was no significant difference ( $p = 0.110$ ) in all-cause mortality or cardiac retransplant between four groups: C4d+/DSA+, C4d+/DSA-, C4d-/DSA+, and C4d-/DSA-. The risk for cardiac mortality or retransplant was significantly higher in C4d+/DSA+ versus C4d-/DSA- patients ( $HR = 4.73$ ;  $p_c = 0.042$ ) but not significantly different in C4d+/DSA- versus C4d-

/DSA- patients ( $p_c = 1.000$ ). Similarly, the risk for cardiac allograft dysfunction was significantly higher in C4d+/DSA+ versus C4d-/DSA- patients (HR 3.26;  $p_c = 0.001$ ) but not significantly different in C4d+/DSA- versus C4d-/DSA- patients ( $p_c = 1.000$ ). Accounting for nonadherence, C4d/DSA status continued to predict cardiac allograft dysfunction but no longer predicted cardiac death or retransplant.

### **Conclusions:**

Medically adherent C4d+/DSA+ HTx patients show significantly greater risk for cardiac allograft dysfunction but not cardiac mortality or retransplant. In contrast, C4d+/DSA- patients represent a new immunopathologic group with a clinical course similar to that of HTx patients without antibody mediated rejection.

**Key words:** antibody mediated rejection; Complement C4; donor specific antibodies; heart transplantation; cardiac allograft dysfunction; C4d; biopsy-negative rejection; nonadherence

## Introduction

The pathologic criteria for antibody mediated rejection (AMR) in heart transplant (HTx) patients have evolved since their early description,<sup>1</sup> to the current application of immunopathologic criteria that includes histopathologic findings such as endothelial swelling and intravascular macrophages (marked by immunohistochemical staining for CD68) and/or evidence of antibody mediated pathology through immunostaining of complement proteins C3d or C4d, as defined by the International Society for Heart and Lung Transplantation (ISHLT) Working Formulation in 2013.<sup>2,3</sup> Subsequently, C4d immunostaining has become the most commonly described method for pathologic antibody mediated rejection (pAMR) grading.<sup>4-9</sup>

As a result, the immunopathologic criteria from the ISHLT created five different pAMR grades, including two subtypes of pAMR1 – pAMR1(I<sup>+</sup>) and pAMR1(H<sup>+</sup>). However, the clinical significance of C4d positivity itself remains an area of active research, especially since the 2013 ISHLT Working Formulation and 2015 American Heart Association Scientific Statement.<sup>2-4,6,7,9-11</sup> In addition, the association of donor specific antibody (DSA) positivity and poor clinical outcomes has been previously reported.<sup>5,12</sup> However, additional literature have reported conflicting results for the association of positive DSA and clinical outcomes based on anti-HLA (human leukocyte antigen) class type.<sup>13-15</sup> Thus, this study evaluated the clinical significance associated with C4d and/or DSA positivity in adult HTx patients with respect to clinical outcomes in the contemporary era (2010–current).

## Methods

### Data Sharing

Data, methods, and materials used to conduct the research are available from the corresponding author upon reasonable request.

### Study Design

Consecutive heart transplant (HTx) patients who were 18 years of age or older and underwent right ventricular endomyocardial biopsy (EMB) between November 2010 to April 2023 were retrospectively reviewed. The typical EMB surveillance protocol at the University of California, San Diego Health (UC San Diego Health) has been described previously.<sup>16</sup> This protocol includes C4d immunofluorescence at 2 and 4 weeks, and at 3, 6 and 12 months during surveillance EMBs in addition to for-cause EMB indication.<sup>2,3</sup> DSA testing is also performed at the same time intervals for surveillance indication and whenever there is clinical concern for AMR. The authors (VC, AC, PB, JC) collected patient data and clinical outcomes from the electronic medical record. Approval for this study was provided by the UC San Diego Health Office of IRB Administration (IRB #805675). This study adheres to the principles of the Declaration of Helsinki formulated by the World Medical Association and the US Federal Policy for the Protection of Human Subjects.



## **Inclusion and Exclusion Criteria**

HTx patients with C4d and DSA testing performed were included for this study. Patients diagnosed with pAMR without positive C4d immunofluorescence (i.e., by histology or CD68 positivity)<sup>2</sup> were excluded from the study.

## **Pathologic Tissue Exams and Anti-HLA Antibody Testing**

The results of pathologic tissue exams were collected for each EMB. C4d immunofluorescence was performed starting November 2010 and positivity was defined according to the ISHLT Working Formulation.<sup>2</sup> Acute cellular rejection (ACR)<sup>17</sup> and pAMR grading<sup>2</sup> were performed according to ISHLT guidelines. All patients were tested for anti-HLA antibodies as standard of care treatment. Patients were tested post-HTx for anti-HLA antibodies as previously described.<sup>18</sup> DSA were identified by comparison of antibody testing results to donor HLA typing. Normalized mean fluorescence intensity values > 3,000 were used to identify positive alloantibodies.

## **Clinical Outcomes and Variables**

All patients were followed for all-cause death. Cause of death was adjudicated by two experienced HTx cardiologists (NW and PJK). When there was a disagreement, a third cardiologist (YT) made the final determination. Other clinical outcomes included: ISHLT cardiac allograft vasculopathy (CAV) grade 2 or greater<sup>19</sup>, cardiac retransplant, cardiac

allograft dysfunction (echocardiogram demonstrating LVEF < 50% and excluding primary graft dysfunction<sup>20</sup>), and future episodes of AMR and/or ACR. Immunomodulatory treatment for AMR refers to a significant change in a subject's immunomodulatory regimen as described previously.<sup>21</sup>

### **Medical Nonadherence**

Documentation by any clinical team member of medical nonadherence after HTx was recorded by the authors (VC, AC, PB, JC). Testing results for illicit substances in nonadherent C4d+ patients who subsequently died was also recorded, if available.

### **Statistical Analysis**

Continuous variables were expressed as mean + standard deviation (SD) for normally distributed variables or median and interquartile range (IQR) for non-normally distributed variables and compared with the use of the Student's t-test or Wilcoxon rank-sum test, respectively. The Kruskal-Wallis test was used for multiple group comparisons of continuous data. Categorical variables were expressed as counts and percentages and compared between groups using either the Pearson's chi-square or Fisher's exact test whenever any observed counts were  $\leq 5$ . If the null hypothesis was rejected, pairwise group comparisons using the Bonferroni-Holm procedure were subsequently performed. The agreement rate between the two adjudicators for clinical outcomes was performed using Cohen's kappa statistics.

The association of C4d/DSA groups with time to event outcomes was evaluated using single predictor and multipredictor Cox proportional hazards models. The multipredictor model adjusted for potential confounders (recipient, donor, and transplant characteristics) via backward model selection with p-value  $\leq 0.15$  threshold for inclusion. Additional exploratory analyses investigated factors associated with time to event outcomes using Cox models applying a forward model selection procedure. Medical nonadherence was only evaluated as a potential predictor in exploratory analyses. Cause-specific hazard models were used to address etiologic questions. The Fine-Gray subdistribution hazard models were performed to evaluate the effect of covariates on competing risks as sensitivity analyses. Collinearity was evaluated by calculating the variance inflation factor for each independent variable.

Analysis was conducted in R (R Core Team, 2022) with survival (v3.5-5)<sup>22</sup> for Cox proportional hazards regression, cmprsk (v2.2-11) for Fine-Gray subdistribution hazard models<sup>23</sup>, fmsb (v0.7.5) for Cohen's kappa,<sup>24</sup> and car (v3.1-2) for variance inflation factor.<sup>25</sup> Figures were produced using the package ggplot2.<sup>26</sup> The corrected p-values are designated as  $p_c$ . For single hypothesis testing we report the uncorrected p-value unless stated otherwise. A  $p$  or  $p_c < 0.05$  are considered significant.

## Results

### Patient Demographics

A total of 560 HTx patients were identified and deemed potentially eligible for the study (**Figure 1**). Of these, 31 patients were excluded for not having C4d immunofluorescence performed. As our study was specific to C4d and DSA positivity, 10 patients were also excluded for the diagnosis of pAMR using CD68<sup>+</sup> immunostaining or histology criteria without C4d positivity.<sup>2</sup>

Baseline characteristics of the study population are depicted in **Table 1**. Patients were typically male (81%) and non-Hispanic white (41%) with a mean age of 54 ± 14 years at the time of HTx. HTx recipients were followed for a total of 1,855.1 person-years in this analysis from time of HTx to end of follow-up.

The primary reason for transplantation was non-ischemic cardiomyopathy (60%). Highly sensitized (panel of reactive antibodies, PRA ≥ 10%) patients comprised 19% of the study cohort. Induction therapy was used in 246 patients (47%) and 73 patients (13%) underwent multi-organ transplants. There were 89 patients (16%) that had a documented history of medical nonadherence post-HTx. Significant group differences were seen for recipient age ( $p < 0.001$ ) and a trend for differences observed with respect to recipient female sex ( $p = 0.070$ ) and allosensitization pre-HTx ( $p = 0.067$ ).

### C4d and DSA positivity

A total of 6,033 EMBs from 519 patients, including 4 cardiac retransplants, were evaluated. Patients were divided into 4 groups based on history of C4d and DSA positivity. There were 40 (7.7%) C4d+/DSA+, 25 (4.8%) C4d+/DSA-, 94 (18.1%) C4d-/DSA+, and 360 (69.4%) C4d-/DSA- patients (**Figure 2**). There were 65 (12.5%) patients that had C4d positivity on immunofluorescence and 134 (25.8%) patients with DSA positivity. Of the positive DSAs, 122 (94.6%) were de novo, 55 (41.0%) were class 1 DSAs, 109 (81.3%) were class 2 DSAs, and 31 (23.1%) were both class 1 and 2 DSAs. Most C4d+ EMBs (92.3%) occurred in the setting of ACR grades 0R or 1R. CAV was known or diagnosed at the time of C4d positivity in 5 of the 20 patients that had been evaluated for CAV at the time. Cardiac allograft dysfunction was known or diagnosed at the time of C4d positivity in 16 (24.6%) patients.

### **Association of C4d and DSA status with all cause death, cardiac death, or retransplant**

Of the 519 patients, 58 (11.2%) died or underwent cardiac retransplant during the follow-up period (**Supplementary Table S1**). Of the deaths, 5 (9.3%) were due to cancer, 16 (29.6%) were due to cardiac causes, 22 (40.7%) were due to infection, 7 (13.0%) were due to other causes, and 4 (7.4%) were due to unknown causes. Initial adjudication of cause of death was in agreement 88.1% of the time with a Cohen's kappa of 0.84 (0.72, 0.96;  $p < 0.001$ ).

There was no significant difference in all-cause mortality or cardiac retransplant between the four C4d/DSA groups (**Figure 3**;  $p = 0.110$ ). However, there was a significantly higher risk in cardiac mortality or retransplant in C4d+/DSA+ compared to C4d-/DSA- patients (**Figure 4**; hazard ratio [HR] = 4.73; 95% confidence interval [CI] 1.57-14.27;  $p_c = 0.042$ ). There was no significant difference in cardiac mortality or transplant in C4d+/DSA- compared to C4d-/DSA- patients ( $p_c = 1.000$ ). The Fine-Gray subdistribution hazard model also demonstrated consistent findings with the cause-specific hazard model ( $p = 0.001$ ). Of note, we observed all cardiac deaths of patients with C4d positivity occurred in-hospital.

### **Predictors for clinical outcomes**

For all-cause mortality or cardiac retransplant, we found cardiac allograft dysfunction, medical nonadherence, and female donor to male recipient sex mismatch to be significant independent risk factors (**Supplementary Table S2**). For cardiac mortality or retransplant, cardiac allograft dysfunction, medical nonadherence, CAV, and percutaneous mechanical circulatory support post-HTx (**Table 2 and Supplementary Table S3**) were found to be significant independent predictors.

For prediction of DSA positivity, we found recipient age, medical nonadherence, and allosensitization status pre-HTx by PRA to be significant independent risk factors (**Supplementary Table S4**). For prediction of C4d positivity, we found class 1 and 2

antibodies, medical nonadherence, and female recipient sex to be significant independent predictors (**Supplementary Table S5**).

For cardiac allograft dysfunction, we found C4d/DSA status, medical nonadherence, CAV, and donor body mass index to be significant independent predictors (**Table 3**, **Supplementary Tables S6 and S7**). Post hoc analysis of C4d/DSA status demonstrated significantly higher risk for cardiac allograft dysfunction in C4d+/DSA+ versus C4d-/DSA- patients (HR 3.16; 95% CI, 1.51-6.61;  $p_c = 0.013$ ). There was no significant difference in risk for cardiac allograft dysfunction in C4d+/DSA- ( $p_c = 1.000$ ) and C4d-/DSA+ ( $p_c = 1.000$ ) versus C4d-/DSA- patients. We did not find the severity of ACR grade with concurrent C4d positivity correlated with cardiac allograft dysfunction ( $p = 0.227$ ). We also did not find the severity of pAMR grade with concurrent C4d positivity ( $p = 0.313$ ) nor the number of AMR episodes ( $p = 0.742$ ) correlated with cardiac allograft dysfunction.

With respect to future CAV, the majority of HTx patients were evaluated for CAV by coronary angiography including: 360 (69.4%) of the original patient cohort, 54 (83.1%) of the C4d+ patients, 19 (82.6%) of the C4d+ patients with cardiac allograft dysfunction, and 12 (85.7%) of the nonadherent C4d+ patients with cardiac allograft dysfunction. Of the 7 nonadherent C4d+/DSA+ patients with cardiac mortality or retransplant, 6 patients had a coronary angiogram performed within 6 months prior to the cardiac death. Given the relatively low number of future CAV events ( $n = 30$ ), we performed a post hoc pairwise comparisons of the primary variable of interest, C4d/DSA patient groups, and adjusted for identified confounders (**Supplementary Table S8**). We observed the point estimate

for C4d+/DSA+ versus C4d-/DSA- patients was associated with a higher risk of CAV, though this was not statistically significant after correcting for multiple comparisons (HR 3.52; 95% CI, 1.21-10.24;  $p_c = 0.063$ ). The C4d+/DSA- patients ( $p_c = 0.527$ ) did not have a significantly higher risk for CAV versus C4d-/DSA- patients.

### **Comparison of C4d/DSA groups**

We found no significant difference in cardiac index by right heart catheterization in C4d+/DSA+ ( $2.6 \pm 0.8$  LPM/m<sup>2</sup>) compared to C4d+/DSA- patients ( $2.8 \pm 0.6$  LPM/m<sup>2</sup>;  $p = 0.182$ ) at the time of C4d positivity. However, median pulmonary capillary wedge pressure was significantly higher in C4d+/DSA+ (17 mmHg; IQR, 12-22 mmHg) compared to C4d+/DSA- patients (13 mmHg; IQR, 8-16 mmHg;  $p = 0.015$ ).

Treatment for AMR varied widely and was significantly more likely in C4d+/DSA+ compared to C4d+/DSA- patients (80.0% vs 24.0%; OR 12.03; 95% CI, 3.34-50.73;  $p < 0.001$ ). Intravenous immunoglobulin (62.5% vs 16.7%,  $p = 0.071$ ) and plasmapheresis (59.4% vs 16.7%,  $p = 0.082$ ) showed a trend of being given more often to treated C4d+/DSA+ compared to C4d+/DSA- patients. In contrast, we found no significant difference in use of intravenous methylprednisolone (43.8% vs 50%,  $p = 1.0$ ), oral prednisone 40 mg/day or higher (21.9% vs 33.3%,  $p = 0.613$ ), antithymocyte globulin (15.6% vs 0,  $p = 0.570$ ), or rituximab (12.5% vs 16.7%,  $p = 1.0$ ) in treated C4d+/DSA+ compared to C4d+/DSA- patients.



Separate episodes of future treated AMR occurred in 25% of C4d+/DSA+ patients. C4d+/DSA+ patients showed a trend towards greater proportion of future treated ACR episodes compared to C4d-/DSA- patients (OR 2.54; 95% CI, 0.98-6.04;  $p_c = 0.066$ ), while C4d+/DSA- patients did not show a significant difference compared to C4d-/DSA- patients ( $p_c = 0.512$ ). There was no significant difference in proportion of mixed rejection between the C4d+/DSA+ and C4d+/DSA- groups (7.5% vs 8.0%;  $p = 1.000$ ). Of note, all C4d+/DSA- patients eventually became C4d negative with a median of 3.1 weeks (IQR, 2.1-4.6 weeks).

The C4d+/DSA+ group showed a significantly greater median time to develop C4d positivity after HTx compared to the C4d+/DSA- group (**Supplementary Figure S1**; 33.6 vs 3.6 weeks;  $p = 0.004$ ). For the C4d+/DSA+ group, 36 (90.0%) patients demonstrated positive DSA concurrent with C4d positivity and the median time from DSA to C4d positivity was 4.5 days (IQR, 0.0-41.0 days) for these patients. Of the 4 patients that did not demonstrate positive DSA concurrent with C4d positivity, 3 patients demonstrated positive DSA within 1 year of C4d positivity while 1 patient demonstrated positive DSA after 1 year. Despite an initially negative DSA, three of the four C4d+/DSA+ patients were still treated for AMR.

Lastly, the C4d+/DSA+ group showed no significant difference compared to the C4d-/DSA+ group with respect to median time to DSA positivity after HTx (24.6 vs 18.3 weeks;  $p = 0.975$ ). However, the C4d+/DSA+ group showed significantly greater concurrent class

1 and 2 DSAs compared to the C4d-/DSA+ group (OR 7.40; 95% CI, 2.86-20.18;  $p < 0.001$ ).

### **Medical nonadherence by C4d/DSA status**

We observed a significant difference in medical nonadherence by C4d/DSA status (**Figure 5**;  $p < 0.001$ ). In pairwise comparisons, medical nonadherence was significantly higher in C4d+/DSA+ compared to C4d-/DSA- patients (OR 7.13; 95% CI, 3.35-15.22;  $p_c < 0.001$ ). In comparison, C4d+/DSA- patients did not show a significant difference compared to C4d-/DSA- patients (OR 1.79; 95% CI, 0.50-5.26;  $p_c = 0.518$ ). We also found nonadherent patients were significantly less likely to be at their target immunosuppressive drug trough levels at the time of C4d positivity (61% vs 92%; OR 0.13; 95% CI, 0.02-0.64;  $p = 0.006$ ). Of note, testing for illicit substances was performed by the clinical team in 8 (61.5%) nonadherent C4d+ patients who had an outcome of death. One patient (12.5%) was positive for methamphetamine, one patient (12.5%) was positive for unprescribed benzodiazepines, and one patient (12.5%) was positive for unprescribed opiates.

### **Discussion**

In this retrospective cohort of 519 HTx patients with greater than 1,800 patient-years of follow-up, we observed the following key findings. First, C4d+/DSA+ patients demonstrated significantly higher cardiac morbidity, mortality, or retransplant when compared to C4d+/DSA- patients. Second, C4d+/DSA+ patients demonstrated

significantly higher medical nonadherence compared to C4d+/DSA- patients. Third, after accounting for nonadherence, C4d+/DSA+ status still predicted higher cardiac allograft dysfunction but no longer predicted higher cardiac mortality or retransplant. Overall, these findings help to understand the clinical significance of DSA positivity in the setting of C4d positivity in HTx patients.

AMR is typically diagnosed by pathologic criteria, set forth in the last Working Formulation by the ISHLT, which has greatly improved the sensitivity for the diagnosis of pAMR.<sup>2,27</sup> However, we show that the new immunopathologic criteria and the recommendation to routinely perform DSA testing<sup>28</sup> in the first year after HTx contributed to the classification of a C4d+/DSA- group that has not been well described in the contemporary era.<sup>5,9,15</sup> In the current study, we find that C4d+/DSA- patients are a clinically distinct group compared to C4d+/DSA+ patients. When accounting for medical nonadherence, C4d+/DSA+ patients demonstrated a significantly higher risk in cardiac allograft dysfunction and a trend towards higher CAV incidence compared to C4d+/DSA- patients. Recently, RNA-sequencing of EMBs also demonstrated transcriptomic differences between DSA+ and DSA- groups in AMR patients, with significant upregulation of genes related to immunity in DSA+ AMR patients.<sup>10</sup> Thus, we suggest that C4d+/DSA- patients represent a new immunopathologic group, both clinically and transcriptomically.

The onset of C4d positivity occurred significantly earlier in the C4d+/DSA- group, at 1 month post-HTx, compared to 9 months post-HTx in the C4d+/DSA+ group. Although initial AMR literature described early onset of positive cardiac immunostaining,<sup>29,30</sup> more

recent literature describe a bimodal distribution of “early” and “late” C4d immunostaining.<sup>4,5,8,31–34</sup> A potential reason for early positive C4d immunostaining has been previously attributed to complement activation related to reperfusion injury at the time of HTx.<sup>35–37</sup> Non-HLA antibodies are another possibility for early positive C4d immunostaining.<sup>38</sup> Our study findings support the hypothesis that the mechanism for complement activation and deposition in C4d+/DSA- patients is different from C4d+/DSA+ patients and deserves further study. Other immunopathological biomarkers including phosphorylated p70 S6 Kinase and S6 ribosomal protein also may help differentiate the C4d+/DSA+ and C4d+/DSA- groups.<sup>39</sup>

We also found the clinical differences at time of presentation to be significantly different for the C4d+/DSA+ compared to C4d+/DSA- patients. The majority (98%) of C4d+/DSA+ patients demonstrated DSA positivity either concurrent with or within a year of C4d positivity. Additionally, C4d+/DSA+ patients presented with significantly higher intracardiac filling pressures<sup>4,40</sup> at the time of C4d positivity compared to C4d+/DSA- patients. Consequently, the treatment of the minority of C4d+ patients without concurrent DSA positivity did not appear to be different compared to C4d+ patients with concurrent DSA positivity. While the majority of C4d+/DSA+ patients received some type of immunomodulatory treatment in addition to their baseline immunosuppression regimen, the immunomodulatory treatments varied widely, with intravenous immunoglobulins and plasmapheresis being more frequently used compared to others.<sup>3,4</sup>

A novel finding from our study is that medical nonadherence is significantly correlated to C4d+/DSA+ status and ultimately, cardiac death or retransplant. We found medical nonadherence to be significantly associated with DSA positivity, C4d positivity, cardiac allograft dysfunction, and cardiac death or retransplant. However, we did not find medical nonadherence to be significantly associated with CAV. We believe this finding does not contradict prior literature describing correlation observed between AMR and CAV.<sup>4,6,15,33,40–42</sup> Instead, our study results complement current literature and suggest nonadherence contributes to mortality through an independent mechanism(s). An important and related observation is that while adherent C4d+/DSA+ patients are at a higher risk for cardiac allograft dysfunction, they do not demonstrate a higher risk for cardiac death or retransplant as do nonadherent C4d+/DSA+ patients. While C4d+/DSA+ status predicted cardiac allograft dysfunction, it did not predict cardiac death or retransplant, suggesting other factors including nonadherence were more significant contributors. Of note, we did not find a correlation with cardiac allograft dysfunction and severity of pAMR grading, number of AMR episodes, nor mixed acute rejection. Further investigation of cardiac allograft dysfunction and its mechanistic relationship to cardiac death or retransplant will be necessary to better understand and treat AMR.

In our study cohort, class 2 DSA positivity was a relatively common occurrence (21%),<sup>5,8,14,15,43</sup> while HTx patients with both class 1 and 2 DSA positivity was much less frequent (6%). Furthermore, we found that patients who were both class 1 and 2 DSA positive were at a significantly higher risk for being in the C4d+/DSA+ rather than C4d-/DSA+ group. This observation contributes to existing literature<sup>5,15</sup> and is important for

HTx patients that become DSA positive as we did not find the majority of these patients (i.e., C4d-/DSA+ group) to be at a higher risk for all cause death, cardiac death or retransplant, CAV, and cardiac allograft dysfunction compared to C4d-/DSA- patients. Further study of class 1 and 2 DSAs, including at a higher molecular resolution,<sup>18,44</sup> may provide additional insights of the risks specific DSAs pose to HTx patients.

Because both the majority of C4d+/DSA+ patients received some form of immunomodulatory treatment and the therapies varied widely, we could not make any confident conclusions on the effect of treatment on clinical outcomes within the C4d+/DSA+ group. Randomized control trials to identify C4d+/DSA+ patients that would benefit from treatment and also specify the optimal type of immunomodulatory treatment will be critical going forward.<sup>4,21,45,46</sup>

Finally, our study adds to the evolving literature of “biopsy-negative rejection” after HTx.<sup>47</sup> We show cardiac allograft dysfunction occurs most frequently in the C4d+/DSA+ group but also occurs in other C4d- groups without an identified cause. With continued research in non-HLA antibodies<sup>38</sup> and immunopathology, particularly with RNA-sequencing,<sup>10,48,49</sup> we believe we will see further classification of immunopathologic phenotypes and greater understanding biologically as well as clinical significance for these patients.

## **Limitations**

This study should be interpreted within the context of several important limitations. First, this was a retrospective study from a single center and may not necessarily represent the experience of other centers with different patient demographics and variations in post-HTx management. Second, the number of cardiac deaths or retransplants were low for all groups. However, we still found the time to cardiac death or retransplant to be significantly different in C4d+/DSA+ compared to C4d-/DSA- patients but this was no longer significant after accounting for medical nonadherence. Third, while our study represents a sizable cohort relative to other studies,<sup>4–6,13,30</sup> the C4d+/DSA- group represented a minority of total HTx patients. Thus, our study remains underpowered to detect smaller differences and larger, multicenter studies should be performed to confirm our findings. Fourth, we chose C4d immunofluorescence as a prognostic biomarker<sup>9</sup> instead of pAMR grading because its simplicity and potential concerns of “overcalls” of pAMR2 without C4d positivity.<sup>50</sup> However, we recognize there is ongoing research of pAMR classifications and more study in this area is needed.<sup>10,48</sup>

## **Conclusions**

C4d immunostaining and DSA remain important biomarkers for HTx patients with AMR; however, their significance depends on their clinical context. In medically adherent patients, C4d+/DSA+ status is associated with a higher risk of cardiac allograft dysfunction but not a higher risk of cardiac death or retransplant compared to HTx patients without AMR. Our results may have important future clinical implications by providing

clinicians contemporary evidence for the significance of the currently recommended C4d immunostaining and DSA testing in HTx patients.



**Acknowledgements:** The authors acknowledge Taylor Tran, BS, from UC San Diego Health for his contribution to data collection, Hyoungmin Kim, from UC San Diego Health for his contribution to data collection, and Layla Myers, BS, from UC San Diego Health for her contribution to data collection.

### **Sources of Funding:**

The project described was partially supported by the National Institutes of Health (PJK), Grants UL1TR001442 and 1KL2TR001444. The content is solely the responsibility of the authors and does not necessarily represent the official views of the NIH. Dr. Nicholas Wettersten and this work was supported (or supported in part) by Career Development Award Number IK2 CX002105 from the United States (U.S.) Department of Veterans Affairs Clinical Sciences R&D (CSRD) Service. The contents do not represent the view of the U.S. Department of Veterans Affairs or the United States Government.

### **Disclosure Statement:**

PJK reports having received payments from CareDx and Natera for consulting and working at an institution that received research payments from CareDx and Natera. Neither CareDx nor Natera were involved in the conceptualization of the study, data collection and analysis, manuscript preparation, and editing of the final manuscript.

## REFERENCES

1. Hammond EH, Yowell RL, Nunoda S, Menlove RL, Renlund DG, Bristow MR, Gay WA Jr, Jones KW, O'Connell JB. Vascular (humoral) rejection in heart transplantation: pathologic observations and clinical implications. *J. Heart Transplant.* [Internet]. 1989;8:430–443. Available from: <https://www.ncbi.nlm.nih.gov/pubmed/2693662>
2. Berry GJ, Burke MM, Andersen C, Bruneval P, Fedrigo M, Fishbein MC, Goddard M, Hammond EH, Leone O, Marboe C, et al. The 2013 International Society for Heart and Lung Transplantation Working Formulation for the standardization of nomenclature in the pathologic diagnosis of antibody-mediated rejection in heart transplantation. *J. Heart Lung Transplant.* [Internet]. 2013;32:1147–1162. Available from: <http://dx.doi.org/10.1016/j.healun.2013.08.011>
3. Colvin MM, Cook JL, Chang P, Francis G, Hsu DT, Kiernan MS, Kobashigawa JA, Lindenfeld J, Masri SC, Miller D, et al. Antibody-mediated rejection in cardiac transplantation: emerging knowledge in diagnosis and management: a scientific statement from the American Heart Association. *Circulation* [Internet]. 2015;131:1608–1639. Available from: <http://dx.doi.org/10.1161/CIR.0000000000000093>
4. Husain AN, Mirza KM, Fedson SE. Routine C4d immunohistochemistry in cardiac allografts: Long-term outcomes. *J. Heart Lung Transplant.* [Internet]. 2017;36:1329–1335. Available from: <http://dx.doi.org/10.1016/j.healun.2017.09.004>
5. Clerkin KJ, Farr MA, Restaino SW, Zorn E, Latif F, Vasilescu ER, Marboe CC, Colombo PC, Mancini DM. Donor-specific anti-HLA antibodies with antibody-mediated rejection and long-term outcomes following heart transplantation. *J. Heart Lung Transplant.* [Internet]. 2017;36:540–545. Available from: <http://dx.doi.org/10.1016/j.healun.2016.10.016>
6. Luk A, Alba AC, Butany J, Tinckam K, Delgado D, Ross HJ. C4d immunostaining is an independent predictor of cardiac allograft vasculopathy and death in heart transplant recipients. *Transpl. Int.* [Internet]. 2015;28:857–863. Available from: <http://dx.doi.org/10.1111/tri.12560>
7. Hammond MEH, Revelo MP, Miller DV, Snow GL, Budge D, Stehlik J, Molina KM, Selzman CH, Drakos SG, Rami A A, et al. ISHLT pathology antibody mediated rejection score correlates with increased risk of cardiovascular mortality: A retrospective validation analysis. *J. Heart Lung Transplant.* [Internet]. 2016;35:320–325. Available from: <http://dx.doi.org/10.1016/j.healun.2015.10.035>
8. Coutance G, Kransdorf E, Aubert O, Bonnet G, Yoo D, Rouvier P, Duong Van Huyen J-P, Bruneval P, Taupin J-L, Leprince P, et al. Clinical Prediction Model for Antibody-Mediated Rejection: A Strategy to Minimize Surveillance Endomyocardial Biopsies After Heart Transplantation. *Circ. Heart Fail.* [Internet]. 2022;15:e009923.

Available from: <http://dx.doi.org/10.1161/CIRCHEARTFAILURE.122.009923>

9. Fedrigo M, Gambino A, Tona F, Torregrossa G, Poli F, Benazzi E, Frigo A, Feltrin G, Toscano G, Caforio AP, et al. Can C4d Immunostaining on Endomyocardial Biopsies Be Considered a Prognostic Biomarker in Heart Transplant Recipients? [Internet]. *Transplantation*. 2010;90:791–798. Available from: <http://dx.doi.org/10.1097/tp.0b013e3181efd059>
10. Mantell BS, Cordero H, See SB, Clerkin KJ, Vasilescu R, Marboe CC, Naka Y, Restaino S, Colombo PC, Addonizio LJ, et al. Transcriptomic heterogeneity of antibody mediated rejection after heart transplant with or without donor specific antibodies. *J. Heart Lung Transplant*. [Internet]. 2021;40:1472–1480. Available from: <http://dx.doi.org/10.1016/j.healun.2021.06.012>
11. Zieliński T, Sobieszcząńska-Małek M, Karczmarz M, Komuda K, Grajkowska W, Pronicki M, Szymańska S, Kluge P, Browarek A, Bekta P, et al. Lack of Impact of Presence of Positive C4d Staining in Capillaries in Myocardial Biopsies on Long-term Survival of Heart Transplant Patients. *Transplant. Proc.* [Internet]. 2016;48:1767–1769. Available from: <http://dx.doi.org/10.1016/j.transproceed.2016.02.058>
12. Tambur AR, Leventhal J, Kaufman DB, Friedewald J, Miller J, Abecassis MM. Tailoring antibody testing and how to use it in the calculated panel reactive antibody era: the Northwestern University experience. *Transplantation* [Internet]. 2008;86:1052–1059. Available from: <http://dx.doi.org/10.1097/TP.0b013e3181874b06>
13. Moayedi Y, Fan C-PS, Tinckam KJ, Ross HJ, McCaughan JA. De novo donor-specific HLA antibodies in heart transplantation: Do transient de novo DSA confer the same risk as persistent de novo DSA? *Clin. Transplant*. [Internet]. 2018;32:e13416. Available from: <http://dx.doi.org/10.1111/ctr.13416>
14. Smith JD, Banner NR, Hamour IM, Ozawa M, Goh A, Robinson D, Terasaki PI, Rose ML. De novo donor HLA-specific antibodies after heart transplantation are an independent predictor of poor patient survival. *Am. J. Transplant* [Internet]. 2011;11:312–319. Available from: <http://dx.doi.org/10.1111/j.1600-6143.2010.03383.x>
15. Frank R, Molina MR, Wald JW, Goldberg LR, Kamoun M, Lal P. Correlation of circulating donor-specific anti-HLA antibodies and presence of C4d in endomyocardial biopsy with heart allograft outcomes: a single-center, retrospective study. *J. Heart Lung Transplant*. [Internet]. 2013;32:410–417. Available from: <http://dx.doi.org/10.1016/j.healun.2012.12.005>
16. Rodgers N, Gerding B, Cusi V, Vaida F, Tada Y, Morris GP, Adler ED, Stehlik J, Kim PJ. Comparison of two donor-derived cell-free DNA tests and a blood gene-expression profile test in heart transplantation. *Clin. Transplant*. [Internet]. 2023;37:e14984. Available from: <http://dx.doi.org/10.1111/ctr.14984>

17. Stewart S, Winters GL, Fishbein MC, Tazelaar HD, Kobashigawa J, Abrams J, Andersen CB, Angelini A, Berry GJ, Burke MM, et al. Revision of the 1990 working formulation for the standardization of nomenclature in the diagnosis of heart rejection. *J. Heart Lung Transplant*. [Internet]. 2005;24:1710–1720. Available from: <http://dx.doi.org/10.1016/j.healun.2005.03.019>
18. Zavyalova D, Abraha J, Rao P, Morris GP. Incidence and impact of allele-specific anti-HLA antibodies and high-resolution HLA genotyping on assessing immunologic compatibility. *Hum. Immunol*. [Internet]. 2021;82:147–154. Available from: <http://dx.doi.org/10.1016/j.humimm.2021.01.002>
19. Mehra MR, Crespo-Leiro MG, Dipchand A, Ensminger SM, Hiemann NE, Kobashigawa JA, Madsen J, Parameshwar J, Starling RC, Uber PA. International Society for Heart and Lung Transplantation working formulation of a standardized nomenclature for cardiac allograft vasculopathy-2010. *J. Heart Lung Transplant*. [Internet]. 2010;29:717–727. Available from: <http://dx.doi.org/10.1016/j.healun.2010.05.017>
20. Kobashigawa J, Zuckermann A, Macdonald P, Leprince P, Esmailian F, Luu M, Mancini D, Patel J, Razi R, Reichenspurner H, et al. Report from a consensus conference on primary graft dysfunction after cardiac transplantation. *J. Heart Lung Transplant*. [Internet]. 2014;33:327–340. Available from: <http://dx.doi.org/10.1016/j.healun.2014.02.027>
21. Cusi V, Vaida F, Wettersten N, Rodgers N, Tada Y, Gerding B, Urey MA, Greenberg B, Adler ED, Kim PJ. Incidence of Acute Rejection Compared With Endomyocardial Biopsy Complications for Heart Transplant Patients in the Contemporary Era. *Transplantation (in press)*. 2023; Available from: <http://dx.doi.org/10.1097/TP.0000000000004882>
22. Therneau, Grambsch. Modeling Survival Data: Extending the Cox Model 2000 New York. *NY Springer Crossref*.
23. Gray B. cmprsk: Subdistribution analysis of competing risks. *R package version*. 2014;
24. Nakazawa M. fmsb: Functions for Medical Statistics Book with some Demographic Data [Internet]. 2023. Available from: <https://CRAN.R-project.org/package=fmsb>
25. Fox J, Weisberg S. An R Companion to Applied Regression [Internet]. SAGE Publications; 2018. Available from: <https://play.google.com/store/books/details?id=uPNrDwAAQBAJ>
26. Wickham H. ggplot2: elegant graphics for data analysis Springer-Verlag New York; 2009. 2016;
27. Tan CD, Sokos GG, Pidwell DJ, Smedira NG, Gonzalez-Stawinski GV, Taylor DO, Starling RC, Rodriguez ER. Correlation of Donor-Specific Antibodies, Complement

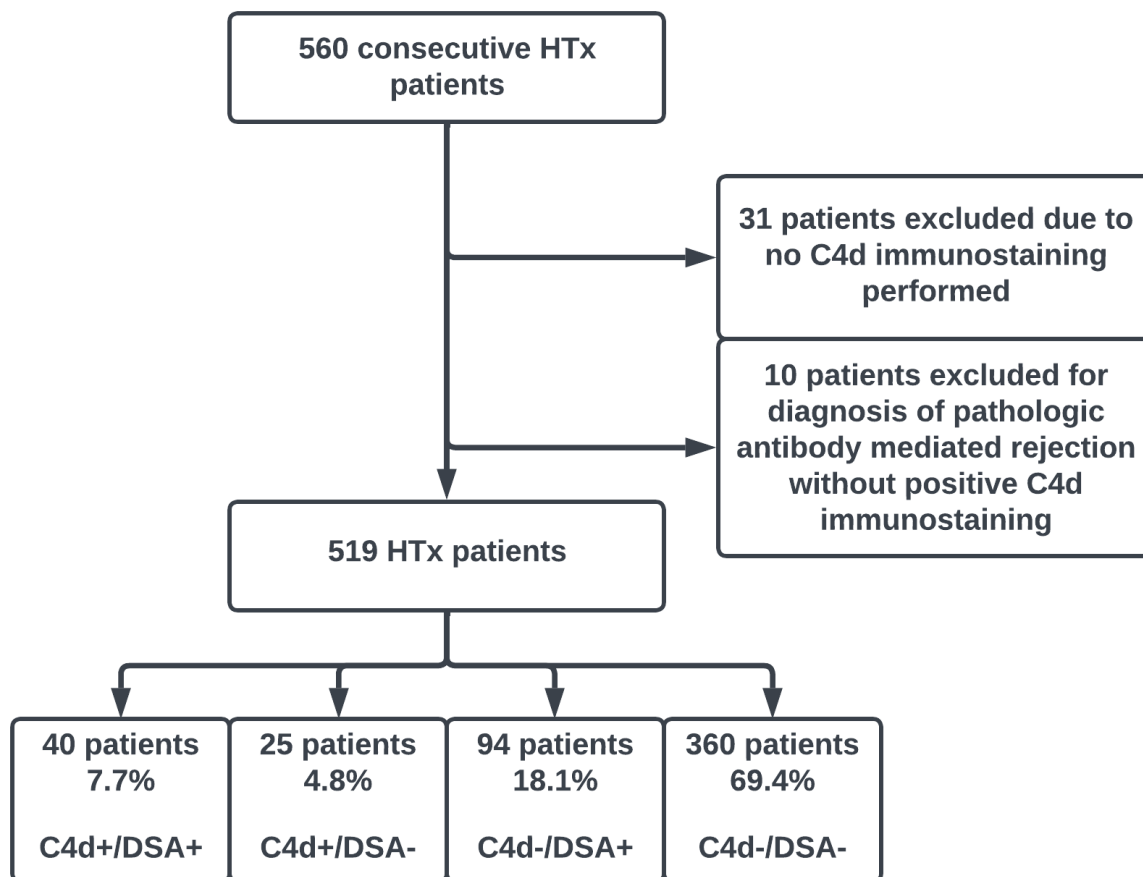
- and Its Regulators with Graft Dysfunction in Cardiac Antibody-Mediated Rejection [Internet]. *American Journal of Transplantation*. 2009;9:2075–2084. Available from: <http://dx.doi.org/10.1111/j.1600-6143.2009.02748.x>
28. Velleca A, Shullo MA, Dhital K, Azeka E, Colvin M, DePasquale E, Farrero M, García-Guereta L, Jamero G, Khush K, et al. The International Society for Heart and Lung Transplantation (ISHLT) guidelines for the care of heart transplant recipients. *J. Heart Lung Transplant*. [Internet]. 2023;42:e1–e141. Available from: <http://dx.doi.org/10.1016/j.healun.2022.10.015>
  29. Hammond EH, Yowell RL, Nunoda S, Menlove RL, Renlund DG, Bristow MR, Gay WA Jr, Jones KW, O’Connell JB. Vascular (humoral) rejection in heart transplantation: pathologic observations and clinical implications. *J. Heart Transplant*. [Internet]. 1989;8:430–443. Available from: <https://www.ncbi.nlm.nih.gov/pubmed/2693662>
  30. Kfoury AG, Hammond MEH, Snow GL, Stehlik J, Reid BB, Long JW, Gilbert EM, Bader FM, Bull DA, Renlund DG. Early screening for antibody-mediated rejection in heart transplant recipients. *J. Heart Lung Transplant*. [Internet]. 2007;26:1264–1269. Available from: <http://dx.doi.org/10.1016/j.healun.2007.09.011>
  31. Almuti K, Haythe J, Dwyer E, Itescu S, Burke E, Green P, Marboe C, Mancini D. The changing pattern of humoral rejection in cardiac transplant recipients. *Transplantation* [Internet]. 2007;84:498–503. Available from: <http://dx.doi.org/10.1097/01.tp.0000278094.41131.9f>
  32. Fedrigo M, Gambino A, Benazzi E, Poli F, Frigo AC, Tona F, Caforio ALP, Castellani C, Toscano G, Feltrin G, et al. Role of morphologic parameters on endomyocardial biopsy to detect sub-clinical antibody-mediated rejection in heart transplantation. *J. Heart Lung Transplant*. [Internet]. 2011;30:1381–1388. Available from: <http://dx.doi.org/10.1016/j.healun.2011.07.012>
  33. Loupy A, Toquet C, Rouvier P, Beuscart T, Bories MC, Varnous S, Guillemain R, Pattier S, Suberbielle C, Leprince P, et al. Late Failing Heart Allografts: Pathology of Cardiac Allograft Vasculopathy and Association With Antibody-Mediated Rejection. *Am. J. Transplant* [Internet]. 2016;16:111–120. Available from: <http://dx.doi.org/10.1111/ajt.13529>
  34. Crespo-Leiro MG, Veiga-Barreiro A, Doménech N, Paniagua MJ, Piñón P, González-Cuesta M, Vázquez-Martul E, Ramirez C, Cuenca JJ, Castro-Beiras A. Humoral heart rejection (severe allograft dysfunction with no signs of cellular rejection or ischemia): incidence, management, and the value of C4d for diagnosis. *Am. J. Transplant* [Internet]. 2005;5:2560–2564. Available from: <http://dx.doi.org/10.1111/j.1600-6143.2005.01039.x>
  35. Baldwin WM 3rd, Samaniego-Picota M, Kasper EK, Clark AM, Czader M, Rohde C, Zachary AA, Sanfilippo F, Hruban RH. Complement deposition in early cardiac transplant biopsies is associated with ischemic injury and subsequent rejection

- episodes. *Transplantation* [Internet]. 1999;68:894–900. Available from: <http://dx.doi.org/10.1097/00007890-199909270-00024>
36. Bayliss J, Bailey M, Leet A, Thomson N, McLean C. Late Onset Antibody-mediated Rejection and Endothelial Localisation of Vascular Endothelial Growth Factor are Associated with Development of Cardiac Allograft Vasculopathy. *Heart Lung Circ.* [Internet]. 2008;17:S3. Available from: [https://www.heartlungcirc.org/article/S1443-9506\(08\)00192-3/abstract](https://www.heartlungcirc.org/article/S1443-9506(08)00192-3/abstract)
  37. de Vries DK, van der Pol P, van Anken GE, van Gijlswijk DJ, Damman J, Lindeman JH, Reinders MEJ, Schaapherder AF, van Kooten C. Acute but transient release of terminal complement complex after reperfusion in clinical kidney transplantation. *Transplantation* [Internet]. 2013;95:816–820. Available from: <http://dx.doi.org/10.1097/TP.0b013e31827e31c9>
  38. Butler CL, Hickey MJ, Jiang N, Zheng Y, Gjertson D, Zhang Q, Rao P, Fishbein GA, Cadeiras M, Deng MC, et al. Discovery of non-HLA antibodies associated with cardiac allograft rejection and development and validation of a non-HLA antigen multiplex panel: From bench to bedside. *Am. J. Transplant* [Internet]. 2020;20:2768–2780. Available from: <http://dx.doi.org/10.1111/ajt.15863>
  39. Li F, Wei J, Valenzuela NM, Lai C, Zhang Q, Gjertson D, Fishbein MC, Kobashigawa JA, Deng M, Reed EF. Phosphorylated S6 kinase and S6 ribosomal protein are diagnostic markers of antibody-mediated rejection in heart allografts. *J. Heart Lung Transplant.* [Internet]. 2015;34:580–587. Available from: <http://dx.doi.org/10.1016/j.healun.2014.09.047>
  40. Wu GW, Kobashigawa JA, Fishbein MC, Patel JK, Kittleson MM, Reed EF, Kiyosaki KK, Ardehali A. Asymptomatic antibody-mediated rejection after heart transplantation predicts poor outcomes. *J. Heart Lung Transplant.* [Internet]. 2009;28:417–422. Available from: <http://dx.doi.org/10.1016/j.healun.2009.01.015>
  41. Michaels PJ, Espejo ML, Kobashigawa J, Alejos JC, Burch C, Takemoto S, Reed EF, Fishbein MC. Humoral rejection in cardiac transplantation: risk factors, hemodynamic consequences and relationship to transplant coronary artery disease. *J. Heart Lung Transplant.* [Internet]. 2003;22:58–69. Available from: [http://dx.doi.org/10.1016/s1053-2498\(02\)00472-2](http://dx.doi.org/10.1016/s1053-2498(02)00472-2)
  42. Coutance G, Ouldamar S, Rouvier P, Saheb S, Suberbielle C, Bréchet N, Hariri S, Lebreton G, Leprince P, Varnous S. Late antibody-mediated rejection after heart transplantation: Mortality, graft function, and fulminant cardiac allograft vasculopathy. *J. Heart Lung Transplant.* [Internet]. 2015;34:1050–1057. Available from: <http://dx.doi.org/10.1016/j.healun.2015.03.002>
  43. Tambur AR, Pamboukian SV, Costanzo M-R, Herrera ND, Dunlap S, Montpetit M, Heroux A. The presence of HLA-directed antibodies after heart transplantation is associated with poor allograft outcome. *Transplantation* [Internet]. 2005;80:1019–1025. Available from: <http://dx.doi.org/10.1097/01.tp.0000180564.14050.49>

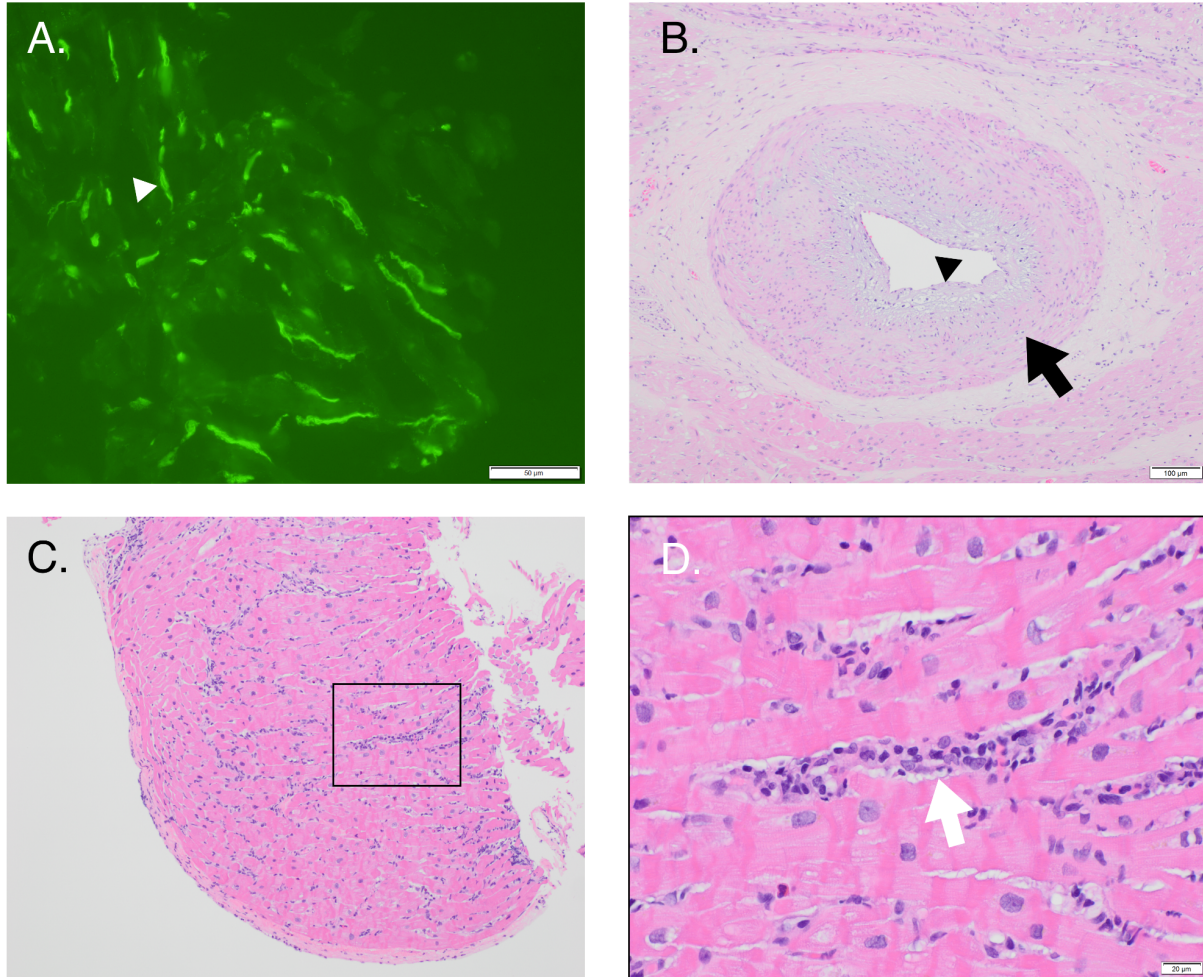
44. Huang Y, Dinh A, Heron S, Gasiewski A, Kneib C, Mehler H, Mignogno MT, Morlen R, Slavich L, Kentzel E, et al. Assessing the utilization of high-resolution 2-field HLA typing in solid organ transplantation. *Am. J. Transplant* [Internet]. 2019;19:1955–1963. Available from: <https://linkinghub.elsevier.com/retrieve/pii/S160061352209150X>
45. Yopes M, Fanek T, Fuselier B, Gaine M, Jackson R, Mabasa A, Kim A, Jennings DL, Clerkin K, Yuzefpolskaya M, et al. Chronic intermittent intravenous immunoglobulin in heart transplant recipients with elevated donor-specific antibody levels. *Clin. Transplant*. [Internet]. 2022;36:e14524. Available from: <https://onlinelibrary.wiley.com/doi/abs/10.1111/ctr.14524>
46. Law YM, Nandi D, Molina K, Gambetta K, Daly KP, Das B. Use of the terminal complement inhibitor eculizumab in paediatric heart transplant recipients. *Cardiol. Young* [Internet]. 2020;30:107–113. Available from: <http://dx.doi.org/10.1017/S1047951119003056>
47. Tang Z, Kobashigawa J, Rafiei M, Stern LK, Hamilton M. The natural history of biopsy-negative rejection after heart transplantation. *J. Transplant*. [Internet]. 2013;2013:236720. Available from: <http://dx.doi.org/10.1155/2013/236720>
48. Loupy A, Duong Van Huyen JP, Hidalgo L, Reeve J, Racapé M, Aubert O, Venner JM, Falmuski K, Bories MC, Beuscart T, et al. Gene Expression Profiling for the Identification and Classification of Antibody-Mediated Heart Rejection. *Circulation* [Internet]. 2017;135:917–935. Available from: <http://dx.doi.org/10.1161/CIRCULATIONAHA.116.022907>
49. Halloran PF, Madill-Thomsen K, Aliabadi-Zuckermann AZ, Cadeiras M, Crespo-Leiro MG, Depasquale EC, Deng M, Gökler J, Kim DH, Kobashigawa J, et al. Many heart transplant biopsies currently diagnosed as no rejection have mild molecular antibody-mediated rejection-related changes. *J. Heart Lung Transplant*. [Internet]. 2022;41:334–344. Available from: <http://dx.doi.org/10.1016/j.healun.2021.08.004>
50. Glass C, Butt YM, Gokaslan ST, Torrealba JR. CD68/CD31 immunohistochemistry double stain demonstrates increased accuracy in diagnosing pathologic antibody-mediated rejection in cardiac transplant patients. *Am. J. Transplant* [Internet]. 2019;19:3149–3154. Available from: <https://www.sciencedirect.com/science/article/pii/S1600613522093066>



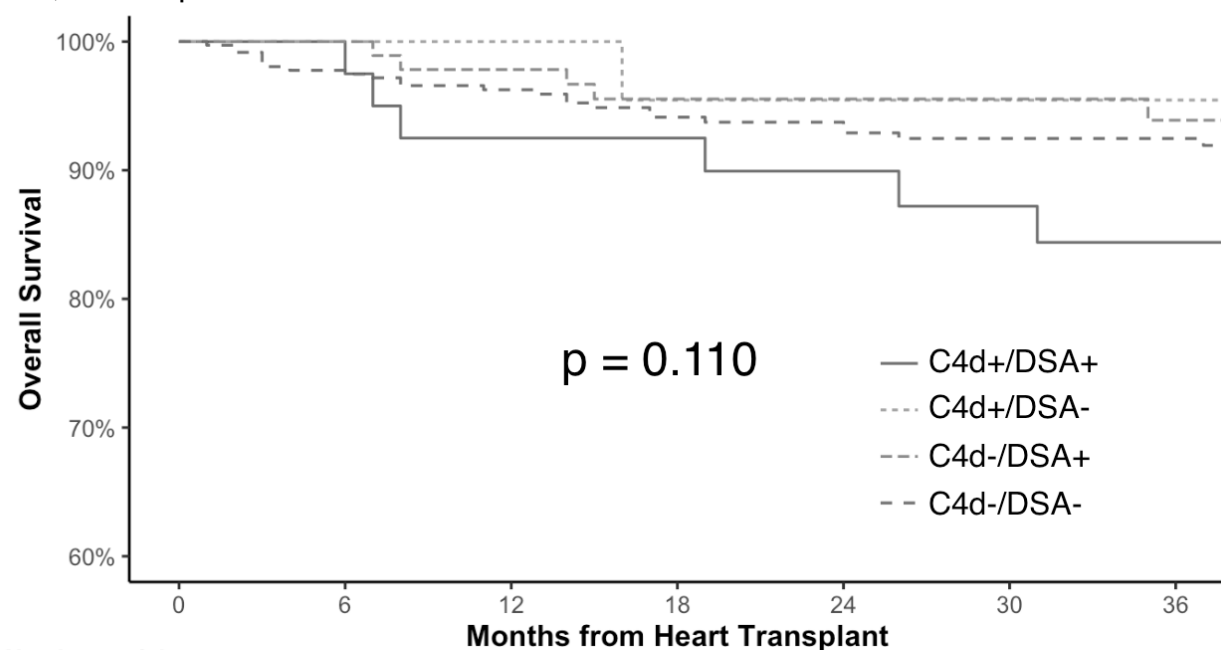
**Figure 1.** Flow diagram. HTx, heart transplantation; DSA, donor-specific antibodies.



**Figure 2.** Representative photomicrographs of a C4d+/DSA+ patient. A. Strong, diffuse endothelial staining (white arrowhead) of capillaries by C4d immunofluorescence (40x). B. Cardiac allograft vasculopathy with concentric intimal fibrosis (black arrow) and endothelial swelling (black arrowhead). C and D. Hematoxylin and eosin staining at 10x (C) and 40x (D) demonstrating intramuscular distribution of macrophages (white arrow) with associated endothelial swelling. DSA, donor-specific antibodies.



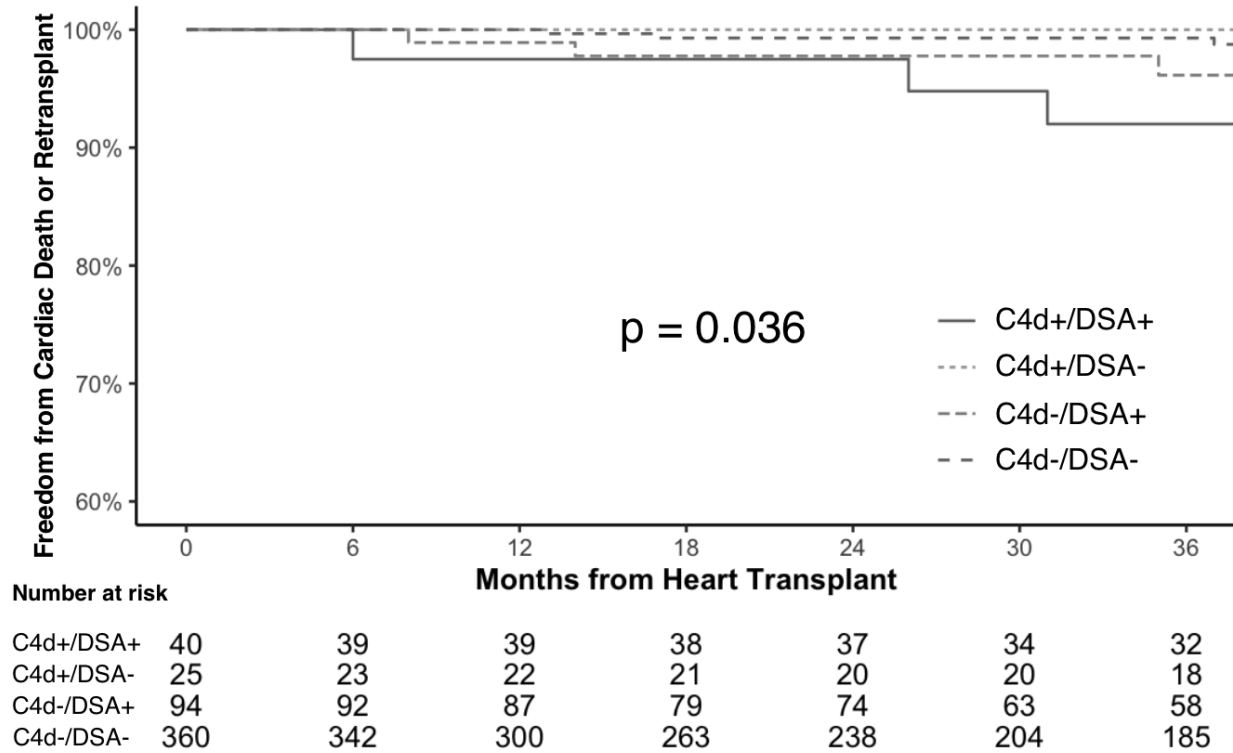
**Figure 3.** Kaplan-Meier Curves for Overall Survival by C4d/DSA status. There was no significant difference in overall survival between groups by C4d/DSA status ( $p = 0.110$ ). DSA, donor-specific antibodies.



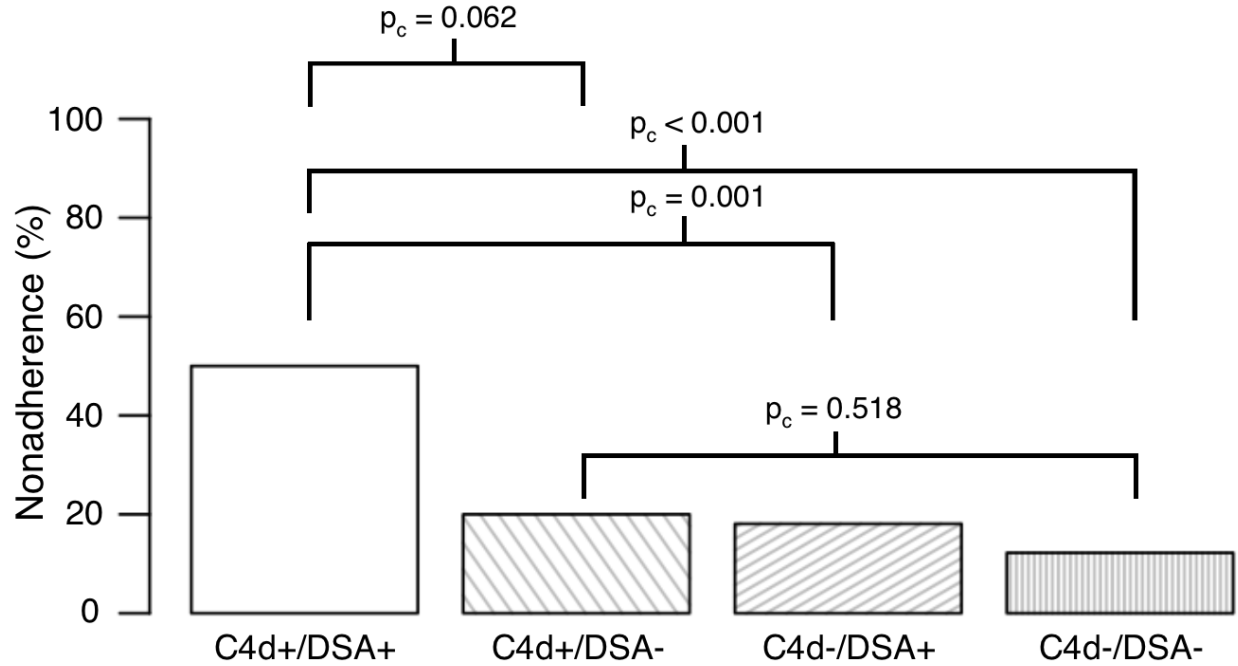
**Number at risk**

	0	6	12	18	24	30	36
C4d+/DSA+	40	39	37	36	34	31	29
C4d+/DSA-	25	23	22	20	19	19	17
C4d-/DSA+	94	92	86	77	72	61	56
C4d-/DSA-	360	332	286	245	220	188	173

**Figure 4.** Kaplan-Meier Curves for Freedom from Cardiac Death or Retransplant. There was significantly higher cardiac mortality or retransplant in C4d+/DSA+ compared to C4d-/DSA- patients ( $p_c = 0.042$ ). However, there was no significant difference in cardiac mortality or retransplant in C4d+/DSA- compared to C4d-/DSA- patients ( $p_c = 1.000$ ). DSA, donor-specific antibodies.



**Figure 5.** Proportion of Medical Nonadherence by C4d/DSA Status. C4d+/DSA+ group showed a significantly increased proportion of patients with medical nonadherence compared to both C4d- groups. However, C4d+/DSA- patients did not show a significant difference compared to C4d-/DSA- patients. DSA, donor-specific antibodies.



**Table 1.** Subject clinical characteristics. BMI, body mass index; CMV, cytomegalovirus; DCD, donation after cardiac death; HTx, heart transplantation; ICM, ischemic cardiomyopathy; MCS, mechanical circulatory support; NICM, nonischemic cardiomyopathy; PHM, predicted heart mass; PRA, panel reactive antibodies

<b>Table 1</b>					
	<b>C4d+/DSA+ Group 1 (n = 40)</b>	<b>C4d+/DSA- Group 2 (n = 25)</b>	<b>C4d-/DSA+ Group 3 (n = 94)</b>	<b>C4d-/DSA- Group 4 (n = 360)</b>	<b>p-value</b>
<b>Donor characteristics</b>					
Age, y, mean (SD)	30.97 (9.73)	37.33 (12.23)	31.47 (10.34)	33.08 (10.73)	0.127
Male, N (%)	26 (70.3)	19 (79.2)	74 (79.6)	298 (84.7)	0.118
<b>Recipient characteristics</b>					
Age, y, mean (SD)	44.85 (18.70)	59.56 (10.21)	51.19 (15.27)	55.67 (12.86)	<0.001
Male, N (%)	26 (65.0)	20 (80.0)	79 (84.0)	296 (82.2)	0.070
Race					0.232
Asian, N (%)	0	3 (12.0)	6 (6.4)	24 (6.7)	-
Black, N (%)	8 (20.0)	4 (16.0)	14 (14.9)	41 (11.4)	-
Native American, N (%)	0	0	2 (2.1)	2 (0.6)	-
Other Race, N (%)	5 (12.5)	1 (4.0)	11 (11.7)	38 (10.6)	-
Pacific Islander, N (%)	0	1 (4.0)	3 (3.2)	8 (2.2)	-
White, N (%)	27 (67.5)	16 (64.0)	58 (61.7)	247 (68.6)	-
Ethnicity					
Hispanic or Latino, N (%)	14 (35.0)	4 (16.0)	33 (35.1)	105 (29.2)	0.428
Recipient BMI, mean (SD)	26.66 (5.23)	28.47 (5.20)	27.63 (4.82)	26.92 (4.71)	0.280
Indication for Transplant					0.134
NICM, N (%)	25 (62.5)	17 (68.0)	56 (59.6)	210 (58.3)	-
ICM, N (%)	9 (22.5)	4 (16.0)	23 (24.5)	119 (33.1)	-
Mixed ICM/NICM (%)	1 (2.5)	3 (12.0)	6 (6.4)	15 (4.2)	-
Congenital, N (%)	4 (10.0)	0	6 (6.4)	11 (3.1)	-
Cardiac allograft failure, N (%)	1 (2.5)	1 (4.0)	3 (3.2)	5 (1.4)	-
Allosensitization pre-HTx (PRA $\geq$ 10%), N (%)	10 (32.3)	2 (9.5)	21 (23.9)	51 (16.5)	0.067

Durable MCS, N (%)	11 (27.5)	9 (36.0)	33 (35.1)	131 (36.5)	0.751
<b>Transplant characteristics</b>					
Multiorgan transplant, N (%)	6 (15.0)	2 (8.0)	17 (18.1)	49 (13.6)	0.585
Cold ischemic time, min, mean (SD)	198.40 (50.75)	207.70 (60.10)	200.80 (58.66)	199.80 (65.52)	0.693
Sex mismatch (female D-male R), N (%)	3 (8.1)	1 (4.2)	10 (10.8)	28 (8.0)	0.787
PHM difference, % recipient PHM, mean (SD)	6.52 (23.20)	1.40 (20.56)	1.15 (16.80)	5.20 (20.80)	0.400
Induction therapy, N (%)	20 (57.1)	15 (62.5)	45 (48.4)	166 (45.7)	0.358
DCD, N (%)	3 (7.5)	4 (16.0)	12 (12.8)	63 (17.5)	0.338
CMV mismatch (D+/R-), N (%)	6 (15.8)	6 (24.0)	20 (21.5)	72 (20.3)	0.388

**Table 2.** Multipredictor model for cardiac mortality or retransplant as the outcome. AMR, antibody mediated rejection; DCD, donation after cardiac death; HTx, heart transplantation; pMCS, percutaneous mechanical circulatory support.

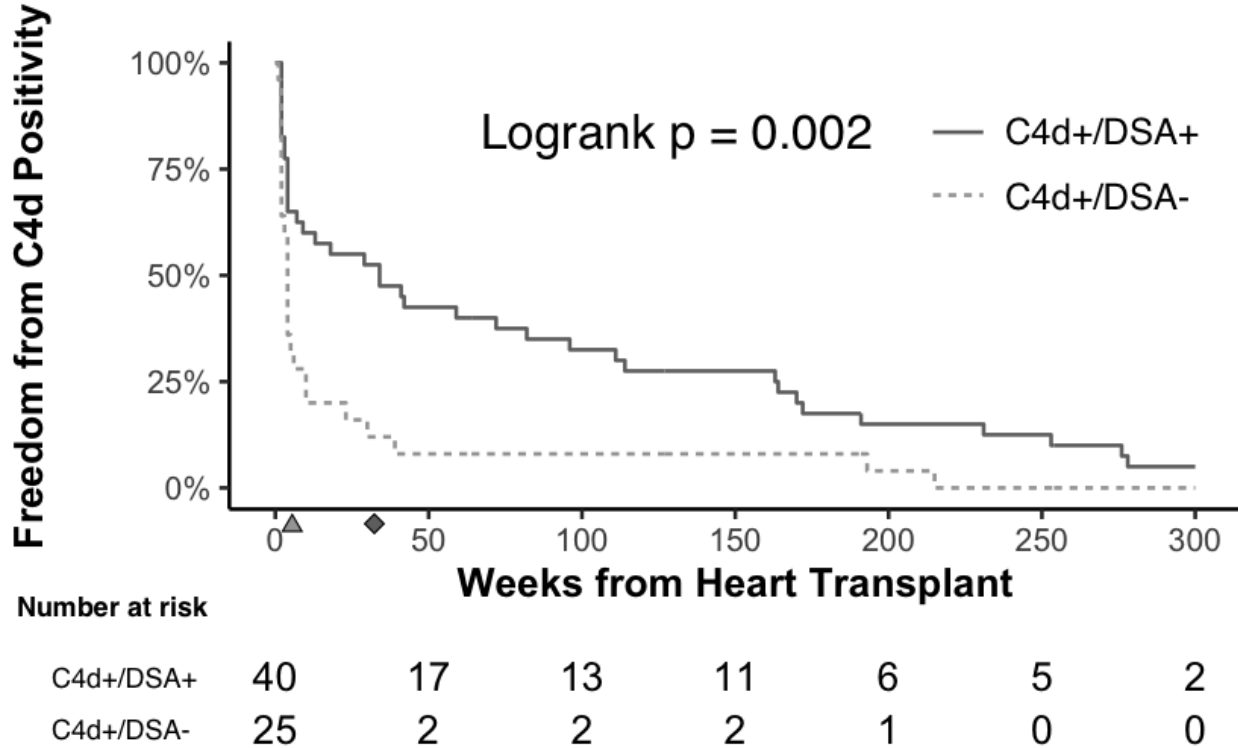
Variables	HR	95% CI	p-value
Cardiac allograft dysfunction	5.51	[1.87-16.27]	p = 0.002
pMCS post-HTx	5.82	[1.65-20.53]	p = 0.006
Medical nonadherence	3.92	[1.33-11.53]	p = 0.013
Cardiac allograft vasculopathy	3.62	[1.18-11.12]	p = 0.024
Recipient age (per 1-y increment)	0.98	[0.95-1.01]	p = 0.122
DCD	5.56	[0.57-54.67]	p = 0.141



**Table 3.** Multipredictor model for cardiac allograft dysfunction as the outcome. Hazard ratios, confidence intervals, and p-values for pairwise comparisons of the C4d/DSA groups are provided in Supplementary Table S7. BMI, body mass index; DSA, donor-specific antibodies; HTx, heart transplantation; MCS, mechanical circulatory support; PHM, predicted heart mass.

Variables	HR	95% CI	p-value
Donor BMI	0.93	[0.88-0.99]	p = 0.016
Medical nonadherence	2.05	[1.13-3.72]	p = 0.018
Cardiac allograft vasculopathy	2.31	[1.15-4.63]	p = 0.018
C4d/DSA status	-	-	p = 0.032
Durable MCS at time of HTx	1.71	[1.00-2.95]	p = 0.052
PHM difference (per % recipient PHM increment)	1.01	[1.00-1.03]	p = 0.081

**Supplementary Figure S1.** Kaplan-Meier Curves for Freedom from C4d positivity in C4d+/DSA+ and C4d+/DSA- patients. Median time (diamond) to C4d positivity is 33.6 weeks from heart transplantation (IQR, 3.4-163.0 weeks) in C4d+/DSA+ patients. Median time (triangle) to C4d positivity is 3.6 weeks from heart transplantation (IQR, 1.6-9.4 weeks) in C4d+/DSA- patients. The C4d+/DSA+ group showed a significantly increased median time to C4d positivity compared to the C4d+/DSA- group (logrank  $p = 0.002$ ).



**Supplementary Table S1.** Patient outcomes compared across groups. ACR, acute cellular rejection; DSA, donor-specific antibody.

	C4d+/DSA+ (n = 40)	C4d+/DSA- (n = 25)	C4d-/DSA+ (n = 94)	C4d-/DSA- (n = 360)
All-cause mortality or cardiac retransplant (%)	11 (27.5)	3 (12.0)	6 (6.4)	38 (10.6)
Cardiovascular related death (%)	6 (15.0)	1 (4.0)	3 (3.2)	6 (1.7)
Infectious related mortality (%)	1 (2.5)	0	2 (2.1)	19 (5.3)
Cardiac allograft dysfunction (%)	20 (50.0)	3 (12.0)	15 (16.0)	43 (11.9)
Cardiac allograft vasculopathy (%)	8 (24.2)	2 (9.5)	6 (8.0)	14 (6.1)
Future ACR (%)	9 (24.3)	4 (16.0)	12 (12.8)	40 (11.2)

**Supplementary Table S2.** Multipredictor model for all cause death or cardiac retransplant as the outcome. BMI, body mass index.

Variables	HR	95% CI	p-value
Cardiac allograft dysfunction	2.89	[1.38-6.04]	p = 0.005
Medical nonadherence	2.23	[1.08-4.63]	p = 0.031
Sex mismatch (female D-male R)	2.59	[1.09-6.15]	p = 0.031
Recipient BMI (per kg/m <sup>2</sup> )	0.92	[0.85-1.00]	p = 0.057
Cardiac allograft vasculopathy	2.10	[0.84-5.20]	p = 0.111

**Supplementary Table S3.** Single predictor cox proportional hazards model for cardiac mortality or retransplant as the outcome. Hazard ratios and confidence intervals were not provided for categorical variables in this simplified table. AMR, antibody mediated rejection; BMI, body mass index; CMV, cytomegalovirus; cPRA, calculated panel reactive antibodies; DSA, donor-specific antibodies; ECMO, extracorporeal membrane oxygenation; HTx, heart transplantation; MCS, mechanical circulatory support; PHM, predicted heart mass; pMCS, percutaneous mechanical circulatory support. \*, allosensitized patients defined as having a UNOS cPRA  $\geq$  10%.

Variables	Total # of patients	Total # of events	Hazard ratio	95% confidence interval	p-value
<b>Recipient characteristics</b>					
Age (per 1-y increment)	519	20	0.96	[0.94-0.99]	0.004
Female sex	519	20	1.76	[0.67-4.61]	0.248
Race and ethnicity	519	20	-	-	0.219
Recipient BMI (per kg/m <sup>2</sup> )	519	20	0.98	[0.90-1.08]	0.700
Multi-organ transplant	519	20	1.87	[0.62-5.65]	0.269
HTx indication	519	20	-	-	0.580
Allosensitization pre-HTx*	449	15	1.27	[0.40-3.99]	0.685
Blood type	512	20	-	-	0.553
Durable MCS at time of HTx	519	20	1.32	[0.55-3.18]	0.537
Medical nonadherence	519	20	4.52	[1.87-10.94]	0.001
<b>Donor characteristics</b>					
Age (per 1-y increment)	507	18	1.02	[0.98-1.06]	0.387
Donor BMI (per kg/m <sup>2</sup> )	501	18	1.01	[0.94-1.09]	0.809
<b>Transplant characteristics</b>					
Induction therapy	505	18	1.12	[0.43-2.92]	0.816

Cold ischemic time (per min)	505	18	1.00	[0.99-1.01]	0.457
PHM difference (per % recipient PHM increment)	501	18	1.01	[0.99-1.03]	0.486
Donation after cardiac death	519	20	3.43	[0.63-18.63]	0.153
ECMO pre-HTx	515	19	3.99	[0.53-30.23]	0.180
ECMO post-HTx	515	19	4.48	[1.02-19.63]	0.047
pMCS pre-HTx	515	19	0.29	[0.04-2.19]	0.230
pMCS post-HTx	515	19	2.26	[0.74-6.91]	0.153
History of C4d positivity	519	20	3.96	[1.63-9.60]	0.002
Number of AMR episodes (per episode)	518	19	2.07	[1.33-3.23]	0.001
History of DSA positivity	519	20	2.86	[1.18-6.91]	0.020
Class 1 Antibodies	519	20	3.86	[1.54-9.70]	0.004
Class 2 Antibodies	519	20	3.72	[1.54-8.98]	0.004
CMV mismatch	511	19	-	-	0.471
Sex mismatch	506	18	-	-	0.648
C4d/DSA Group	519	20	-	-	0.011
Cardiac allograft vasculopathy	360	18	5.20	[2.00-13.50]	0.001
Cardiac allograft dysfunction	518	20	5.66	[2.34-13.69]	<0.001

**Supplementary Table S4.** Multipredictor analysis for donor-specific antibody (DSA) positivity as the outcome. cPRA, calculated panel of reactive antibodies; HTx, heart transplantation; MCS, mechanical circulatory support; UNOS, United Network for Organ Sharing. \*, allosensitized patients defined as having a UNOS cPRA  $\geq$  10%.

Variables	HR	95% CI	p-value
Recipient Age (per 1-y increment)	0.98	[0.96-0.99]	p < 0.001
Medical nonadherence	2.03	[1.33-3.08]	p = 0.001
Allosensitization pre-HTx*	1.55	[1.02-2.36]	p = 0.039
Durable MCS at time of HTx	0.71	[0.48-1.05]	p = 0.083

**Supplementary Table S5.** Multipredictor model for C4d positivity as the outcome. BMI, body mass index.

Variables	HR	95% CI	p-value
Class 1 antibodies	3.04	[1.73-5.35]	p < 0.001
Class 2 antibodies	2.97	[1.71-5.16]	p < 0.001
Medical nonadherence	1.89	[1.11-3.21]	p = 0.019
Female recipient sex	1.77	[1.03-3.05]	p = 0.038
Recipient BMI (per kg/m <sup>2</sup> )	0.96	[0.92-1.01]	p = 0.126



**Supplementary Table S6.** Single predictor cox proportional hazards model for cardiac allograft dysfunction as the outcome. Hazard ratios and confidence intervals were not provided for categorical variables in this simplified table. AMR, antibody mediated rejection; BMI, body mass index; CMV, cytomegalovirus; cPRA, calculated panel reactive antibodies; DSA, donor-specific antibodies; ECMO, extracorporeal membrane oxygenation; HTx, heart transplantation; MCS, mechanical circulatory support; PHM, predicted heart mass; pMCS, percutaneous mechanical circulatory support. \*, allosensitized patients defined as having a UNOS cPRA  $\geq$  10%.

Variables	Total # of patients	Total # of events	Hazard ratio	95% confidence interval	p-value
<b>Recipient characteristics</b>					
Age (per 1-y increment)	519	78	1.01	[0.99-1.02]	0.568
Female sex	519	78	0.84	[0.49-1.45]	0.538
Race and ethnicity	519	78	-	-	0.593
Recipient BMI (per kg/m <sup>2</sup> )	519	78	0.97	[0.92-1.02]	0.197
Multiorgan transplant	519	78	1.16	[0.63-2.15]	0.631
HTx indication	519	78	-	-	0.026
Allosensitization pre-HTx*	449	66	0.87	[0.47-1.64]	0.671
Blood type	512	77	-	-	0.664
Durable MCS at time of HTx	519	78	1.36	[0.87-2.13]	0.180
Medical nonadherence	519	78	2.49	[1.56-3.97]	<0.001
<b>Donor characteristics</b>					
Age (per 1-y increment)	507	76	0.99	[0.97-1.01]	0.256
Donor BMI (per kg/m <sup>2</sup> )	501	73	0.97	[0.93-1.01]	0.140
<b>Transplant characteristics</b>					
Induction therapy	505	75	0.79	[0.50-1.26]	0.319

Cold ischemic time (per min)	505	76	1.00	[0.99-1.00]	0.375
PHM difference (per % recipient PHM increment)	501	73	1.01	[1.00-1.02]	0.011
Donation after cardiac death	519	78	1.41	[0.71-2.81]	0.326
ECMO pre-HTx	515	77	2.64	[0.83-8.41]	0.100
ECMO post-HTx	515	77	2.76	[1.19-6.37]	0.018
pMCS pre-HTx	515	77	0.57	[0.28-1.15]	0.116
pMCS post-HTx	515	77	1.43	[0.79-2.61]	0.240
History of C4d positivity	519	78	2.45	[1.50-3.98]	<0.001
Number of AMR episodes (per episode)	518	77	1.51	[1.12-2.03]	0.007
History of DSA positivity	519	78	2.07	[1.32-3.23]	0.001
Class 1 Antibodies	519	78	3.13	[1.90-5.17]	<0.001
Class 2 Antibodies	519	78	2.48	[1.58-3.89]	<0.001
CMV mismatch	511	78	-	-	0.365
Sex mismatch	506	76	-	-	0.312
C4d/DSA Group	519	76	-	-	<0.001
Cardiac allograft vasculopathy	360	62	2.27	[1.21-4.28]	0.011

**Supplementary Table S7.** Pairwise comparisons of C4d/DSA groups for cardiac allograft dysfunction as the outcome. DSA, donor-specific antibodies. #, reference is C4d-/DSA-group.

Variables	HR	95% CI	p-value
C4d+/DSA+#	3.16	[1.51-6.61]	$p_c = 0.013$
C4d+/DSA-#	0.63	[0.15-2.65]	$p_c = 1.000$
C4d-/DSA+#	1.26	[0.63-2.49]	$p_c = 1.000$

**Supplementary Table S8.** Pairwise comparisons of C4d/DSA groups for cardiac allograft vasculopathy as the outcome. Pairwise comparisons were adjusted for the identified confounders of donor age, cold ischemic time, and predicted heart mass difference by the forward model selection procedure. DSA, donor-specific antibodies. #, reference is C4d-/DSA- group.

Variables	HR	95% CI	p-value
C4d+/DSA+#	3.52	[1.21-10.24]	$p_c = 0.063$
C4d+/DSA-#	1.63	[0.36-7.34]	$p_c = 0.527$
C4d-/DSA+#	1.98	[0.72-5.43]	$p_c = 0.370$