

Title:

Leveraging DNA Methylation to Predict Treatment Response in Major Depressive Disorder: A Critical Review

Authors:

Jan Dahrendorff¹, Glenn Currier², Monica Uddin¹

Affiliations:

1. Genomics Program, College of Public Health, University of South Florida, Tampa, FL, USA
2. Department of Psychiatry and Behavioral Neurosciences, University of South Florida, Tampa, FL, USA

Corresponding author:

Address correspondence to:
Monica Uddin, PhD
University of South Florida
3720 Spectrum Blvd., Suite 304
813-974-9765
monica43@usf.edu

Abstract

Background: Major depressive disorder (MDD) is a debilitating and prevalent mental disorder with a high disease burden. Despite a wide array of different treatment options, many patients do not respond to initial treatment attempts. Selection of the most appropriate treatment remains a significant clinical challenge in psychiatry, highlighting the need for the development of biomarkers with predictive utility. Recently, the epigenetic modification DNA methylation (DNAm) has emerged to be of great interest as a potential predictor of MDD treatment outcomes. Here we review efforts to date that seek to identify DNAm signatures associated with treatment response in individuals with MDD.

Methods: Searches were conducted in the databases PubMed, Scopus, and Web of Science with the concepts and keywords major depressive disorder, DNA methylation, antidepressants, psychotherapy, cognitive behavior therapy, electroconvulsive therapy, transcranial magnetic stimulation, and brain stimulation therapies.

Results: We identified 31 studies implicating DNAm patterns associated with MDD treatment outcomes. The majority of studies ($N=25$) are focused on selected target genes exploring treatment outcomes in pharmacological treatments ($N=22$) with a few studies assessing treatment response to electroconvulsive therapy ($N=3$). Additionally, there are few genome-scale efforts ($N=6$) to characterize DNAm patterns associated with treatment outcomes.

Limitations: There is a relative dearth of studies investigating DNAm patterns in relation to psychotherapy, electroconvulsive therapy, or transcranial magnetic stimulation; importantly, most existing studies have limited sample sizes.

Conclusions: Given the heterogeneity in both methods and results of studies to date, there is a need for additional studies before existing findings can inform clinical decisions.

Keywords: MDD, DNA methylation, treatment response

1 **1. Introduction**

2 Major depressive disorder (MDD) is a debilitating and highly prevalent mental
3 disorder characterized by a range of symptoms including depressed mood, loss of
4 interest in activities that once brought enjoyment, impairment of cognitive functioning,
5 fatigue, sleep disturbances, and psychomotor changes (Association, 2013). MDD is the
6 most prevalent mental health disorder in the United States with current estimates of the
7 past year and lifetime prevalence of around 10% and 20%, respectively (Goodwin et al.,
8 2022; Hasin et al., 2018). Globally, the World Health Organization estimates a lifetime
9 prevalence of 4.4% making MDD also the most common mental disorder (World Health
10 Organization, 2017). MDD is highly recurrent (Hardeveld et al., 2013; Moffitt et al.,
11 2010) and associated with a substantial disease burden (Jia, Zack, Thompson, Crosby,
12 & Gottesman, 2015). Many people suffering from the disorder can face a reduction in
13 quality-adjusted life expectancy of around 30 years; as such, MDD is among the
14 diseases with the highest loss of quality-adjusted life expectancy (Jia et al., 2015).
15 Additionally, individuals suffering from MDD are at an increased risk to develop a range
16 of comorbidities (Arnaud et al., 2022) including cardiovascular diseases (Brunner et al.,
17 2014; Surtees et al., 2008), metabolic disorders (Rotella & Mannucci, 2013;
18 Vancampfort et al., 2015), neurodegenerative diseases (Diniz, Butters, Albert, Dew, &
19 Reynolds, 2013; Ownby, Crocco, Acevedo, John, & Loewenstein, 2006), and
20 autoimmune disorders (Andersson et al., 2015).

21 Although there have been significant efforts to illuminate the molecular
22 underpinnings of MDD, the etiology of MDD remains poorly understood. Despite the role

23 of genetic factors in the etiology of MDD (reviewed in (Flint, 2023; Shadrina,
24 Bondarenko, & Slominsky, 2018)) the identified heritability estimates--around 40%
25 (Kendler, Gatz, Gardner, & Pedersen, 2006; Kendler, Ohlsson, Lichtenstein, Sundquist,
26 & Sundquist, 2018) --are lower in comparison to other psychiatric disorders (e.g.
27 schizophrenia 81%, Sullivan et al., 2003; bipolar disorder 85% (McGuffin et al., 2003)
28 and ADHD 82% (Chang, Lichtenstein, Asherson, & Larsson, 2013)) suggesting that
29 additional factors beyond DNA sequence might mediate MDD pathogenesis. Recent
30 work has proposed that epigenetic mechanisms play a role in mediating the risk of MDD
31 after environmental exposures (Klengel & Binder, 2015). Broadly, epigenetic alterations
32 influence gene expression and translation via chemical modifications that regulate either
33 chromatin structure or modify the accessibility of DNA, resulting in altered transcriptional
34 activity of the locus (J. K. Kim, Samaranyake, & Pradhan, 2009). These processes
35 include DNA methylation (DNAm), histone modifications, and small non-coding RNAs,
36 among others. Among known epigenetic mechanisms, DNAm is perhaps the most
37 studied epigenetic modification. A large body of literature documents a range of
38 environmental factors that can lead to changes in DNAm patterns including exposure to
39 pollutants and toxins (Hou, Zhang, Wang, & Baccarelli, 2012), smoking (Breitling, Yang,
40 Korn, Burwinkel, & Brenner, 2011) aging (Bjornsson et al., 2008; Wong et al., 2010),
41 diet (summarized here (Maugeri & Barchitta, 2020)), medication (Kringel, Malkusch, &
42 Lotsch, 2021; Lotsch et al., 2013) physical activity (Sailani et al., 2019), early life
43 experiences (Cecil, Zhang, & Nolte, 2020; Klengel et al., 2013; Martins et al., 2021;
44 Weaver, Meaney, & Szyf, 2006) and stress exposure (van der Knaap et al., 2014).
45 Similarly, aberrant DNAm can modulate the transcriptional activity of genes, enabling
46 variation in gene expression patterns that can potentially mediate how an individual

47 responds to environmental stimuli (Provencal et al., 2020) or even contribute to the
48 pathogenesis of diseases (Nishiyama & Nakanishi, 2021; van den Oord et al., 2022).

49 DNAm has emerged to be of interest as a predictive molecular biomarker in MDD
50 treatment response (Gasso et al., 2017; Neyazi et al., 2018; Wang, Zhang, et al., 2018).
51 In such pharmaco-epigenetic studies, DNAm is measured in patients before, and in
52 some efforts, also post-completion of the treatment. In parallel, repeated depression
53 symptom measures are obtained throughout the treatment. The assessment of DNAm
54 at baseline and after completion of the treatment can thereby be utilized to characterize
55 epigenomic variation associated with treatment outcomes and in turn, inform the
56 development of tools with predictive utility (Domschke et al., 2014; Ju et al., 2019; L. Li
57 et al., 2021; Takeuchi et al., 2017). Advancing the development of such predictive tools
58 could potentially guide future treatment decisions and ultimately shift trial-and-error
59 treatment approaches toward more optimal treatment choices.

60 Several pharmacological and non-pharmacological treatment options for MDD
61 are currently available including pharmacotherapy, psychotherapy, and brain stimulation
62 treatments (Reviewed in (Gartlehner et al., 2017; Meerman, Ter Hark, Janzing, &
63 Coenen, 2022)), and often a combination of such treatments is utilized to maximize
64 treatment outcomes. Despite the variety of existing MDD therapeutics, a large
65 proportion of patients do not respond to initial treatment attempts (Trivedi et al., 2006;
66 Wang, Zhang, et al., 2018), with treatments leading to remission in only approximately
67 one-third of the patients (Trivedi et al., 2006; Undurraga & Baldessarini, 2012; Warden,
68 Rush, Trivedi, Fava, & Wisniewski, 2007). Similarly, between a third and 55% of
69 patients with MDD are classified as suffering from treatment-resistant depression, a

70 particularly severe form of depression in which two or more treatment attempts with
71 antidepressant medication have previously been unsuccessful (Souery et al., 2007;
72 Thomas et al., 2013; Trivedi et al., 2006). Identification of the right treatment for a
73 patient is largely based on trying out different treatments, which usually takes a long
74 time to achieve a clinical response in the patient, often times causing substantial
75 hardship to those seeking relief from their symptoms (Garcia-Gonzalez et al., 2017;
76 Papakostas, 2008) ([Figure 1 for Illustration](#)). The ability to provide treatments that are
77 most likely to elicit a positive response in any individual patient remains an elusive goal
78 in psychiatry that could perhaps be informed by findings from DNAm studies. To
79 advance this goal, here, we review and summarize existing studies investigating DNAm-
80 based epigenetic signatures associated with treatment outcomes in patients with MDD.
81 Given that the majority of epigenetic studies in relation to treatment outcomes are
82 examining DNAm, we will focus our review on this particular epigenetic modification.

83 **2. Materials and Method**

84
85 The searches for this review were conducted in the databases PubMed (United
86 States National Library of Medicine at the National Institute of health), Scopus
87 (Elsevier), and Web of Science (Clarivate) to identify primary research articles on
88 DNAm associated with treatment response in MDD. The following search terms for this
89 review included: Major depressive disorder, DNA methylation, antidepressants,
90 psychotherapy, cognitive behavior therapy, brain stimulation therapy, electroconvulsive
91 therapy (ECT), and transcranial magnetic stimulation (TMS). The search included
92 primary research articles in English. Studies focusing on epigenetic mechanisms other
93 than DNAm, conference abstracts, review papers, murine and cell culture studies
94 investigating DNAm associated with treatment responses were excluded from the

95 search. The searches in PubMed were conducted on September 7th, 2023, while the
96 Scopus and Web of Science searches were conducted on September 7th, 2023.

97 The PubMed search identified 52 articles; Scopus yielded 48 articles while Web
98 of Science returned 49 results. Additionally, two records that were identified in the
99 reference list of a previous review paper were considered significant and subsequently
100 added to the search results. In total, 151 articles were identified and imported into
101 EndNote reference management software (Clarivate). After the removal of duplicated
102 articles, 54 articles remained for initial review. Next, review articles, book chapters, case
103 reports, case studies, and murine and cell culture studies were removed after screening
104 the titles. Additionally, studies focused on characterizing DNAm alterations induced by
105 MDD treatments that have not assessed treatment outcomes, and studies focused on
106 other psychiatric disorders were excluded from our results. This filtering procedure
107 removed 21 sources, producing a total of 33 primary research articles that underwent a
108 full-text review. The full-text review led to the exclusion of two additional articles: One
109 literature review and one article not evaluating treatment outcomes, leaving 31 research
110 articles for inclusion in the study ([Figure 2 for illustration of literature search](#)).

111 3. Results

112 [Figure 3](#) presents the results of the literature search process employed in this study.

113 Table 1 presents a summary of all studies included in this review. To date, most

114 epigenetic investigations ($N = 25$) of MDD treatment responses are focused on selected

115 target genes that have been well characterized in the context of MDD including solute

116 carrier family 6 member 4 (*SLC6A4*), brain-derived neurotrophic factor (*BDNF*),

117 interleukin (*IL*)-1, *IL*-6 & *IL*-11, monoamine oxidase A (*MAOA*), 5-hydroxytryptamine

118 receptor (*HTR1A/1B*) and tryptophan hydroxylase 2 (*TPH2*). However, studies focusing

119 on genome-scale analyses of methylation are also emerging and have become more

120 frequent in the last few years ($N=6$). The majority of such genome-scale efforts have

121 investigated pharmacological treatments of MDD as the treatment modality

122 ($N=4$)(Engelmann et al., 2022; Ju et al., 2019; Martinez-Pinteno et al., 2021; Takeuchi

123 et al., 2017) with only a few focused on ECT ($N=2$)(*Moschny, Zindler, et al., 2020;*

124 *Sirignano et al., 2021*).

125

126 3.1 Candidate gene DNAm studies investigating antidepressant response

127 The vast majority of candidate gene studies investigating DNAm patterns in

128 association with treatment outcomes are focused on pharmacological treatments for

129 MDD. While some studies assess epigenetic marks associated with a response to

130 selective serotonin reuptake inhibitors (SRRIs) ($N=9$), most studies include patients

131 undergoing a more heterogeneous treatment regime utilizing a combination of tricyclic

132 antidepressants (TCAs), selective norepinephrine reuptake inhibitors (SNRIs), or

133 noradrenergic and specific serotonergic antidepressants (NaSSA), in addition to SRRIs.

134 Those pharmaco-epigenetic candidate gene studies can grant insights into DNAm

135 patterns of loci previously implicated in MDD and potentially be of predictive utility by
136 characterizing DNAm patterns in those who respond or do not respond to a given
137 treatment.

138 *3.1.A Monoamine- transporters, oxidases, receptors & related genes*

139
140 Among the first proposed hypotheses regarding the etiology of MDD was the
141 ‘monoamine theory’ in which serotonin (5-HT), norepinephrine, and dopamine
142 deficiencies and imbalances were thought to underly the development of MDD (Coppen,
143 1967; Hamon & Blier, 2013; Schildkraut, 1965). Early findings from studies using
144 monoamine oxidase inhibitors and TCAs potentiating 5-HT activity and in turn,
145 ameliorating depressive symptoms, have informed decades of research investigating
146 monoamine systems in MDD (reviewed in (Z. Li, Ruan, Chen, & Fang, 2021; Morilak &
147 Frazer, 2004)). As a result, a vast body of literature has investigated monoamine
148 neurotransmitter genes in MDD (reviewed in (Flint & Kendler, 2014; Shadrina et al.,
149 2018).

150 The majority of such studies have analyzed genes in the serotonin pathway, e.g.,
151 the serotonin transporter (*SLC6A4*) or serotonin receptor (*HTR1A/1B*). Many
152 antidepressant drugs exert their antidepressant effects by selectively inhibiting the
153 function of *SLC6A4* which is to mediate the reuptake of serotonin, a key
154 neurotransmitter in the brain. In addition, both serotonin receptor subtypes *HTR1A* and
155 *HTR1B* play a critical role in mediating antidepressant activity and have therefore been
156 of great research interest (Fakhoury, 2015). The chronic administration of SSRIs
157 desensitizes the presynaptic *HTR1A* and *HTR1B* autoreceptors, decreasing the
158 negative feedback mediated by the receptors, and in turn, stimulating activation of post

159 synaptic serotonin receptors eliciting the antidepressant response (Chilmonczyk,
160 Bojarski, Pilc, & Sylte, 2015; Tiger, Varnas, Okubo, & Lundberg, 2018).

161 Concerning pharmaco-epigenetic studies investigating candidate genes,
162 *SLC6A4* has been the most frequently assessed locus with six studies having
163 investigated differential DNAm associated with treatment outcomes following
164 antidepressant treatment to date. All of the studies have examined CpGs in the
165 promoter region of *SLC6A4*. A number of early studies was conducted in populations of
166 Asian ancestry. The first study by Kang and colleagues (Kang et al., 2013) interrogated
167 the methylation status of seven CpGs within the promoter of *SLC6A4* in the peripheral
168 blood of 108 Korean patients, but only observed nominally significant differential
169 methylation (hypermethylation) of one CpG in treatment non-responders at baseline. A
170 study by Okada et al. (2014) conducted in Japan examined *SLC6A4* promoter
171 methylation in the peripheral blood of patients undergoing MDD treatment and
172 interrogated 81 CpGs in the *SLC6A4* gene using a mass spectrometry approach. The
173 authors identified hypermethylation of CpG 3 of *SLC6A4* in treatment responders. A
174 similar effort in Japan (Iga et al., 2016) assessed *SLC6A4* promoter methylation in 28
175 MDD patients undergoing treatment with various antidepressants including SSRIs and
176 TCAs for eight weeks. Akin to the earlier findings by Kang and colleagues (Kang et al.,
177 2013), the authors identified the differential methylation of one CpG at baseline to be
178 nominally associated with treatment outcomes, however, Iga and colleagues describe
179 their observations in relation to symptom improvement, with hypomethylation of one
180 CpG associated with improvement in symptom severity following eight weeks of
181 treatment.

182 In contrast, Domschke and colleagues (2014) observed reduced *SLC6A4*
183 methylation across nine CpGs at baseline associated with an impaired response to
184 escitalopram treatment after six weeks in 94 patients of European descent suffering from
185 MDD. Interestingly, the seven previously investigated CpGs by Kang et al., showed the
186 opposite direction of effect in this study: while Domschke et al. reported
187 hypomethylation to be associated with an inhibited treatment response in their
188 European cohort (Domschke et al., 2014), Kang and colleagues observed a relative
189 increase in methylation—at least at one CpG site—to be associated with an impaired
190 improvement (Kang et al., 2013). Despite these contradictory findings, the findings by
191 Domschke and colleagues have since been supported in a recent observational study
192 by Schiele et al. (2021), similarly investigating DNAm of nine CpG sites in the promoter
193 region of *SLC6A4*. The authors evaluated DNAm for its association with antidepressant
194 treatment response in the peripheral blood of 236 participants with MDD receiving
195 various antidepressants including SSRIs, SNRIs, TCAs and NaSSA over the six-week-
196 long in-patient treatment. Their analysis of nine CpG sites by sequencing of bisulfite-
197 converted DNA revealed that hypomethylation of several *SLC6A4* CpGs was associated
198 with an impaired antidepressant response, as in the earlier work by Domschke and
199 colleagues. Their findings were replicated in another subset of patients that continued
200 treatments with antidepressants (n= 110) (Schiele et al., 2021).

201 Overall, findings from studies investigating *SLC6A4* have been inconclusive with
202 often contrasting results. The results of two studies (Iga et al., 2016; Kang et al., 2013)
203 converge on findings of a negative correlation between promoter methylation and
204 treatment outcomes, with Kang and colleagues reporting a trend of increased *SLC6A4*
205 promoter CpG methylation associated with impaired treatment response while Iga and

206 colleagues reporting lower methylation associated with symptom improvement.
207 Conversely, two studies (Domschke et al., 2014; Schiele et al., 2021) observed *SLC6A4*
208 hypomethylation in individuals unresponsive to antidepressant treatment while Okada
209 and colleagues found increased *SLC6A4* promoter methylation in treatment responders.
210 Lastly, a study in Korea (Moon et al., 2022) investigated *SLC6A4* promoter DNAm pre-
211 and post-6 weeks of SSRI treatment but did not identify any Differentially methylated
212 positions (DMPs) associated with treatment response, further obscuring the predictive
213 utility of *SLC6A4* promoter methylation in relation to treatment outcomes.

214 Other genes of interest for pharmaco-epigenic studies in the serotonin pathway
215 include the *Serotonin receptor subtypes (HTR1A/1B)*. Four studies to date have
216 investigated serotonin receptor subtype methylation level in association with MDD
217 treatment response. Akin to contradictions among results from studies of the serotonin
218 transporter gene, there have been inconsistencies among the findings in studies of
219 *HTR1A/1B*. For example, a study by Gassó and colleagues (2017), investigated the
220 effects of DNAm and genetic variation of the 5-hydroxytryptamine receptor 1B (*HTR1B*)
221 gene in relation to treatment response to the SSRI fluoxetine (Gasso et al., 2017). In
222 their study, 83 adolescent participants were evaluated for MDD (n=57), obsessive
223 compulsive disorder (n=16) and generalized anxiety disorder (n=12) symptoms 12
224 weeks into their fluoxetine treatment. The authors focused on the effect of SNPs in
225 transcription factor binding sites, proteins highly involved with the regulation of
226 transcription and gene expression in the *HTR1B* locus, and clinical outcomes among
227 the patients. Their analysis found the two SNPs *s9361233* and *rs9361235*, to be
228 significantly associated with a positive treatment outcome after fluoxetine treatments.
229 Similarly, their DNAm analysis of 7 selected CpGs in the promoter region of *HTR1B* was

230 assessed via pyrosequencing and showed a negative correlation between positive
231 clinical outcomes after fluoxetine treatment and average *HTR1B* promoter region
232 methylation levels at baseline. However, the co-medication of some participants with
233 antipsychotics, mood stabilizers, and benzodiazepines limits the interpretability of the
234 results.

235 In contrast, Wang and colleagues (Wang, Lv, et al., 2018) focused on patients
236 exclusively treated with escitalopram and observed hypomethylation at one CpG of
237 *HTR1A* & and one CpG of *HTR1B* to be associated with an impaired respond to
238 escitalopram. Additionally, the authors observed the interaction of recent stressful life
239 events and hypomethylation at four CpG sites of *HTR1A/1B* to be associated with an
240 impaired treatment response.

241

242

243 Another example is a recent study by Gao and colleagues (2022), who applied
244 neuroimaging and sequencing techniques to investigate brain activity and *HTR1A/1B*
245 DNAm with antidepressant treatment response in 300 patients to develop a model
246 capable of predicting treatment outcomes based on their data. Their analysis examined
247 over 116 different regions of the brain and 181 CpG sites located in the promoter region
248 of *HTR1A* and *HTR1B* while taking 11 clinical characteristics into account. Their logistic
249 regression model resulted in 78.57% prediction accuracy with a 0.834 area under the
250 ROC curve (AUC). Of note, the methylation sites assessed in the study were in
251 proximity to the CpGs investigated in the earlier study by Wang *et al* (2018a (Wang, Lv,
252 et al., 2018)) and showed similar lower methylation levels in the group resistant to

253 treatment, despite using a wide range of different antidepressants (SSRIs, SNRIs, and
254 NaSSAs). Finally, Xu and colleagues (Xu et al., 2022) focused their analysis on the
255 impact of DNAm of *HTR1A* and *HTR1B* in combination with stressful life events and
256 childhood adversity on antidepressant treatment response. Stratifying their analysis into
257 a SSRI and non-SSRI group, the authors assessed methylation in 181 CpG sites of the
258 *HTR1A* and *HTR1B* genes. Hypomethylation of one *HTR1A* CpG was associated with
259 an improved antidepressant response in patients of the non-SSRI group (treated with
260 SNRIs and NaSSAs). Additionally, the authors observed an interaction of *HTR1A*
261 methylation at one CpG and childhood adversity, such that hyper methylation together
262 with high levels of childhood adversity, were significantly associated with poor treatment
263 outcomes in both groups. Further, participants with the rs6298 SNP who also had high
264 methylation levels of *HTR1B* CpG3-61, showed significantly better efficacy of SSRI
265 treatment.

266 To date, studies of *HTR1A/1B* CpG methylation in relation to treatment outcomes are
267 scarce, report contradicting directions of effect, and show heterogeneity in study
268 designs, making comparisons among findings challenging. However, it is noteworthy
269 that interaction of CpG methylation and genotype, or environmental effects such as
270 stressful life events or childhood adversity, could jointly inform treatment outcomes as
271 opposed to just by methylation alone.

272

273 An important regulator of monoamine levels is monoamine oxidases (MAOs) and
274 differential methylation of this locus has been assessed in the context of antidepressant
275 treatment response (Domschke et al., 2015). MAOs are enzymes located on the outer

276 membranes of mitochondria responsible for the metabolism of monoamine
277 neurotransmitters via oxidative deamination (Yeung, Georgieva, Atanasov, & Tzvetkov,
278 2019). For instance, serotonin is degraded by MAO-A (Tong et al., 2013), and
279 consequently, inhibiting the activity of MAO-A by medications called monoamine
280 oxidase inhibitors (MAOIs) is a well-established treatment approach in MDD. In a pilot
281 study, Domschke et al. investigated the relationship between DNAm of the monoamine
282 oxidase A (*MAO-A*) gene at 43 CpGs and escitalopram treatment response in a sample
283 of 94, (61 females and 33 males)(Domschke et al., 2015). To account for *MAO-A* being
284 encoded on the X chromosome, the authors stratified their analysis by sex. The authors
285 did not observe any considerable influence of *MAO-A* methylation on treatment
286 outcomes but hypomethylation at two CpGs in the *MAO-A* promoter region was
287 nominally associated with a treatment response in females.

288 Tryptophan hydroxylase-2 methylation (*TPH2*), another gene with important
289 regulatory functions regarding serotonin synthesis has also been investigated recently
290 (Shen et al., 2020). *TPH2* is involved in limiting the rate of serotonin synthesis by
291 converting tryptophan to 5-hydroxytryptophan (Walther et al., 2003) and has been
292 explored within the context of psychiatric disorders (Ottenhof, Sild, Levesque, Ruhe, &
293 Booij, 2018), including MDD(Fan et al., 2021; S. J. Tsai et al., 2009; Zhang et al., 2015).
294 Shen and colleagues (2020) assessed DNAm of *TPH2* in relation to antidepressant
295 treatment response in 291 participants (female n=187, male n =104) with MDD. The
296 authors stratified their analysis by sex and identified one hypermethylated CpG site in
297 females and two in males to be nominally associated with an impaired treatment
298 response. When assessing the impact of early life stress and DNAm on treatment
299 outcomes, the authors observed childhood adversity to be correlated with

300 hypomethylation of one CpG-site of *TPH2* in males, which remained associated with an
301 impaired treatment response after FDR correction. Participants with high levels of
302 childhood adversity had poorer treatment outcomes, leaving it unclear whether
303 treatment resistance was mediated by differential methylation or childhood adversity.

304 In summary, studies assessing DNAm of monoamine-related loci in relation to
305 treatment outcomes in MDD have been inconclusive and present significant
306 methodological heterogeneity. The monoamine-related genes that are the focus of
307 multiple independent studies, such as the serotonin transporter gene or its receptor
308 subtypes, report inconsistent and even contradicting directions of effects associated
309 with treatment outcomes. Interpretation of these efforts may be further complicated by
310 assessing different epigenetic loci, as well as heterogeneity in treatment regimens and
311 durations. These findings suggest future efforts are necessary in order to adequately
312 assess the predictive potential of monoamine-related loci DNAm in MDD treatment
313 outcomes.

314 3.1.B *Brain-derived neurotrophic factor (BDNF)*

315

316 Another important pathway in MDD, and among the first ones to be examined in
317 a pharmaco-epigenetic context with a treatment response (Tadic et al., 2014), is the
318 neurotrophin Brain-derived neurotrophic factor (*BDNF*). *BDNF* has been extensively
319 explored as a key molecular pathway in MDD involved in many synaptic and brain-
320 related functions (Jin, Sun, Yang, Cui, & Xu, 2019), informing the neurotrophic
321 hypothesis of MDD by tying the pathogenesis of depression to alterations in *BDNF*
322 expression and functioning (Kozisek, Middlemas, & Bylund, 2008). Altered *BDNF* levels
323 have been reported in patients with MDD in a number of studies (Bus et al., 2015; Kishi,

324 Yoshimura, Ikuta, & Iwata, 2017). The expression of *BDNF* and Tropomyosin receptor
325 kinase B (*TrkB*) has been identified to be critical for the action of several
326 antidepressants (Casarotto et al., 2021; Castren & Monteggia, 2021) including SSRIs,
327 TCAs, MAOIs, and ketamine, and alteration in the BDNF- TrkB multiprotein complex
328 has been found to interfere with the effects of antidepressants (Casarotto et al., 2021).
329 Additionally, *BDNF* plays a crucial role in other pathways implicated in MDD, due to its
330 role downstream of the monoamine signaling pathway (Tayyab et al., 2018), additionally
331 rendering *BDNF* an attractive target for pharmaco-epigenomic studies.

332 To date, six candidate gene studies have examined DNAm of *BDNF* in relation to
333 antidepressant treatment response. Tadic and colleagues (2014) provided early
334 preliminary evidence that depressed patients with hypomethylation in the promoter
335 region of *BDNF* are less likely to respond to antidepressant treatment (Tadic et al.,
336 2014). In a pilot study, the authors investigated DNAm at 13 CpGs of the *BDNF*
337 promoter in the peripheral blood of 39 patients with MDD (female n= 22 male n = 17).
338 DNAm was assessed using a targeted DNAm approach using next-generation
339 sequencing of the bisulfite-converted DNA of the participants. Patients with lower
340 methylation at CpG site 87 of exon IV had a significantly lower treatment response to
341 fluoxetine and venlafaxine as compared to the participants showing higher methylation
342 at that locus. Later attempts to validate such findings by the same group in a sample of
343 561 patients did not confirm this finding in the overall sample, however, a subgroup of
344 199 patients with severe depression (HAM-17 scores ≥ 25) documented significantly
345 higher DNAm of that locus in treatment responders (Lieb et al., 2018). It's noteworthy
346 that the treatment regime of participants in the pilot study (Tadic et al., 2014) included a
347 range of different antidepressants including SSRIs, SNRIs, and TCAs while the larger

348 study (Lieb et al., 2018) only included patients who were administered escitalopram or
349 venlafaxine.

350 These early findings of *BDNF* promoter methylation's positive association with
351 treatment outcomes have since been confirmed to hold potential in predicting
352 antidepressant treatment response in similar investigations by other groups(Hsieh, Lin,
353 Lee, & Huang, 2019; L. Li et al., 2021; Wang, Zhang, et al., 2018). A clinical trial by
354 Wang and colleagues (Wang, Zhang, et al., 2018) investigated the association of *BDNF*
355 gene methylation and genotype with antidepressant treatment response in 85 patients
356 with MDD. After eight weeks' treatment with the SSRI escitalopram, participants were
357 assessed for changes in their depressive symptoms. Hypomethylation in promoter-
358 region CpG islands at baseline was associated with an impaired treatment response
359 compared to those who showed remission. Additionally, the authors document
360 significantly better treatment outcomes in patients who had experienced fewer stressful
361 life events along with having *BDNF* hypermethylation. Similarly, Li and colleagues
362 (2021) examined the association of DNAm *BDNF* and response to antidepressant
363 treatment in MDD in 291 patients. The authors interrogated a total of 194 CpG sites at
364 baseline and observed significant hypermethylation of CpG 140 in the *BDNF* promoter
365 in female MDD remitters but not in males (L. Li et al., 2021) warranting further
366 examinations of sex-specific methylation patterns in relation to treatment response.
367 Relatedly, a smaller study conducted in Taiwan observed hypermethylation at one CpG
368 of the *BDNF* exon IX promoter was associated with response to antidepressant
369 treatment in 25 responders(Hsieh et al., 2019). Conversely, a randomized control trial
370 by Kim and colleagues documented the opposite direction of effect, in which *BDNF*
371 exon VI hypermethylation was associated with treatment resistance to 24 week-long

372 escitalopram administration, in 127 patients with comorbid acute coronary syndrome (J.
373 M. Kim et al., 2015). However, the clinical heterogeneity among the patients with regard
374 to cardiovascular pathologies and associated treatments limits the comparability of the
375 findings to other pharmaco-epigenetics studies of MDD.

376 Collectively, despite notable heterogeneity in study designs, five out of six
377 studies focused on *BDNF* converge on identifying a pattern of significant association
378 between promoter methylation and response to antidepressant treatment. While
379 hypomethylation of *BDNF* promoter CpGs was indicative of impaired treatment
380 outcomes in two independent studies (Tadic et al., 2014; Wang, Zhang, et al., 2018)
381 hypermethylation of this locus has been associated with positive antidepressant
382 responses in three studies (Hsieh et al., 2019; L. Li et al., 2021; Lieb et al., 2018).

383 3.1.C Interleukins

384

385 A large body of literature has characterized the role of inflammatory processes in
386 MDD (reviewed in (Beurel, Toups, & Nemeroff, 2020; Pariante, 2017)). Immune cell-
387 mediated inflammation is a key mechanism to maintain homeostasis in the response to
388 harmful stimuli such as pathogens or cell damage and prolonged inflammatory immune
389 responses have been linked to MDD (Beurel et al., 2020). A range of proinflammatory
390 cytokines and their corresponding receptors have been associated with MDD (Petralia
391 et al., 2020) including Interleukin (IL)-6, IL-1, IL-1 β , IL-2, IL-4, IL-10, the IL-1, tumor
392 necrosis factor (TNF)- α , transforming growth factor- β , and also C-reactive protein. Many
393 mechanisms contributing to inflammation in MDD have been proposed. These include
394 the inflammasome pathway activated by heightened levels of damage-associated
395 molecular patterns (Fleshner, Frank, & Maier, 2017), oxidative stress (Bajpai, Verma,

396 Srivastava, & Srivastava, 2014), psychosocial stress (I. B. Kim, Lee, & Park, 2022), and
397 diet (Lassale et al., 2019; Luo et al., 2023). Additionally, evidence from clinical trials
398 further highlights the role of immune dysregulation in MDD (Bai et al., 2020; Wittenberg
399 et al., 2020). Finally, the immune system's interrelation with the neuroendocrine system
400 makes this pathway particularly relevant to MDD etiology and an important target for
401 epigenetic treatment response prediction in MDD.

402 For example, an early randomized controlled trial by Powell and colleagues
403 (2013) (Powell et al., 2013) investigated DNAm of the *interleukin-11 (IL11)* as a general
404 predictor of antidepressant treatment response in the peripheral blood of a sub-sample
405 of 113 (female n= 67 male n = 46) participants with MDD. The patients were treated
406 with escitalopram (n=80) or the tricyclic antidepressant nortriptyline (n= 33) for 12
407 weeks. Their analysis interrogated one CpG island, a region with a high number of CpG
408 dinucleotide repeats, in *IL11* using a mass spectrometry approach. Their analysis
409 revealed that hypomethylation of *IL11* CpG unit 5 was associated with an increased
410 response to both administered treatments. Linear regression analysis assessing the
411 predictive potential of DNAm at any of the assessed CpGs revealed an interesting
412 contrast in the direction of the association of DNAm and treatment response: while
413 increased levels of baseline DNAm at *IL11* unit 4 was found to be associated with a
414 higher treatment response among participants taking escitalopram, an impaired
415 response was observed in those taking nortriptyline, pointing to medication-specific
416 difference. Such medication specific associations make a strong case to, if study design
417 permits, stratify future analysis in pharmaco-epigenetic studies by different
418 antidepressant treatments. Additionally, the authors report that patients with higher *IL11*
419 methylation in combination with the *rs1126757* allele had better antidepressant

420 responses by the end of treatment, providing evidence of how assessment of DNAm
421 and genotype can be combined to predict treatment outcomes in MDD.

422 Another recent pharmacogenetics study by Draganov *et al.*, 2019 (Draganov et
423 al., 2019), investigated if the response to antidepressant treatment is associated with
424 DNAm of several inflammation-related genes. Similarly, they assessed if a treatment
425 response is associated with having inflammation-specific genetic variation (SNPs). The
426 authors identified 41 SNPs located in inflammation regulatory genes including
427 *interleukin 1- β* , *interleukin 2, 6*, *IL6R*, *IL10*, *IL18*, tumor necrosis factor (*TNF*)- α , and
428 interferon (*IFN*)- γ . Subsequent pyrosequencing of five selected CpG Islands within *IL1-*
429 *β* , *IL6*, and *IL6R* quantified the methylation status and revealed a higher methylation
430 percentage of *IL6R* CpG island to be associated with treatment response. SNPs in *IL1- β*
431 and, marginally, *IL6R* were found to be in association with the treatment response to a
432 range of treatments including SSRIs, TCAs, MAOIs, mood stabilizers, and
433 antipsychotics. However, 56 of the patients were diagnosed with a range of comorbid
434 mental disorders including affective, anxiety, psychotic, and schizo-affective disorder at
435 baseline leaving the study findings to be interpreted with caution. In addition, the
436 authors did not control for heterogeneity in antidepressant treatment types and
437 dosages, further limiting the interpretability of the findings. In sum, findings from the two
438 candidate studies investigating interleukins are largely inconclusive, only nominally
439 significant (Draganov et al., 2019), and show significant heterogeneity in study design.

440 *3.1.D Summary of Challenges associated with Candidate Gene Studies to Date* 441

442 Apart from the limited number of studies overall, there are several reasons
443 complicating the consistency between findings of candidate gene studies to date,

444 including: (1) The scope of assessed CpGs differs greatly. For example, in the above-
445 described studies of *SLC6A4*, the number of CpGs investigated range between 7(Kang
446 et al., 2013) and 81 (Okada et al., 2014), with only Kang et al (Kang et al., 2013) and
447 Domschke *et al* (Domschke et al., 2014) and Schiele *et al.*, 2021 (Schiele et al., 2021)
448 examining some (n=7) of the same CpGs within that locus. Similarly, there has been
449 scarce convergence regarding assessed CpGs in studies assessing *BDNF* or serotonin
450 receptor subtypes, with only two studies (respectively, (Lieb et al., 2018; Tadic et al.,
451 2014) & (Gao et al., 2022; Xu et al., 2022)) interrogating the same CpGs (2) The
452 pharmacological intervention in the studies is quite heterogeneous with only few studies
453 focusing on one SSRI alone(Wang, Lv, et al., 2018; Wang, Zhang, et al., 2018). Some
454 studies augment SSRI treatment with antipsychotics, benzodiazepines and mood
455 stabilizers(Domschke et al., 2014; Gasso et al., 2017) while others incorporate a range
456 of SSRIs, SNRIs, and TCAs(L. Li et al., 2021; Okada et al., 2014; Schiele et al., 2019).
457 Despite acknowledging the heterogeneity in medications among the patients, only a
458 limited number of studies stratify their analysis by different antidepressants(Domschke
459 et al., 2015; Powell et al., 2013; Xu et al., 2022) (3) Differences in allele frequencies of
460 assessed candidate loci. For example, *SLC6A4* allele frequency differences(Ng et al.,
461 2006) between Asian (Iga et al., 2016; Kang et al., 2013; Moon, Kim, Kim, Lim, & Kim,
462 2023; Okada et al., 2014) and Europeans (Domschke et al., 2014; Schiele et al., 2021) study
463 populations can also affect the observed methylation status (Giri et al., 2017) (4) The
464 treatment duration varies significantly. While the shortest treatment duration was about
465 2 weeks (Gao et al., 2022) the longest treatment course was up to 24 weeks(J. M. Kim
466 et al., 2015). The vast variation in treatment duration is also observed among studies
467 using a similar inventory of SSRIs, SNRIs, and TCAs, NaSSAs (Kang et al., 2013; L. Li

468 et al., 2021). (5) The majority of studies fail to address the potential confounding effect
469 of blood cell type heterogeneity. Only one recent candidate study (Shen et al., 2020)
470 included white blood cell proportion as a covariate in their analysis while the other
471 studies allowed the potential of observing inaccurate methylation patterns due to
472 differences in cell-type compositions in the blood samples of the participants. Of note,
473 many of these issues (2-5) apply not just to candidate gene studies, but also to
474 genome-scale studies, described in more detail below. Taken together, these
475 shortcomings illustrate the difficulty of consolidating findings from existing candidate
476 genes studies, rendering an assessment of their utility as biomarkers with predictive
477 potential likely premature.

478

479

480 3.3 Epigenome-wide association studies of response to antidepressants

481

482 Genome-scale studies have the potential to reveal novel loci and pathways
483 associated with MDD that have not been considered before in candidate gene
484 approaches. To date, only six studies have used a genome-scale approach to elucidate
485 the relationship between baseline DNAm and treatment outcomes in MDD of which four
486 efforts have been pharmaco-epigenetic studies (Engelmann et al., 2022; Ju et al., 2019;
487 Martinez-Pinteno et al., 2021; Takeuchi et al., 2017).

488 In a study from Japan, Takeuchi and Colleagues (2018) (Takeuchi et al., 2017)
489 investigated the potential of predicting the treatment response to paroxetine based on
490 genome-scale DNAm patterns in the peripheral blood of 68 MDD patients. In their

491 analysis, the authors contrasted the ten best responders and the ten worst responders
492 to paroxetine treatment and identified the hypermethylation of the genes liprin-alpha-4
493 (*PPFIA4*) and heparan sulfate-glucosamine 3-sulfotransferase 1 (*HS3ST1*) at baseline
494 in patients with the worst treatment outcomes in relation to the best treatment
495 responders (Takeuchi et al., 2017). The limited sample size of their study, not adjusting
496 for cell-type heterogeneity, along with the analytic approach of focusing exclusively on
497 selected best and worst responders to paroxetine treatment pose challenges to the
498 interpretability of the findings as not every patient falls among the extremes of the
499 spectrum. Ju and colleagues investigated global DNAm changes in the blood of
500 responders ($N = 82$) and non-responder ($N = 95$) to the eight-week-long escitalopram
501 treatment of 177 patients with MDD (Ju et al., 2019). Their analysis revealed 303
502 differentially methylated positions (DMPs) between treatment responders and non-
503 responders at baseline at a nominal p-value ($p < 0.05$) with several differentially
504 methylated CpG-site-associated differences in gene expression between the assessed
505 groups. One hypomethylated position in *CHN2* showed the most significant association
506 with mRNA expression and was replicated in an external cohort.

507 Another small preliminary study of adolescents with MDD (Martinez-Pinteno et
508 al., 2021) assessed baseline DNAm differences in responders ($N = 11$) and non-
509 responders ($N = 11$) before undergoing eight weeks of fluoxetine treatment. Considering
510 a difference in β -value medians of 0.2 the authors identified 21 DMPs between
511 treatment responders and the treatment-resistant group at baseline, predicting
512 treatment outcomes for MDD. Their small sample size limits the interpretability of the
513 findings; however, their data could be pooled together with future efforts.

514 A recent study profiled genome-scale baseline DNAm in responders and non-
515 responders to escitalopram, venlafaxine, and lithium treatment in 80 European MDD
516 patients (Engelmann et al., 2022). Despite the inability to identify any differentially
517 methylated positions on an epigenome- scale associated with treatment response, the
518 authors observed 18 hypermethylated and 2 hypomethylated regions associated with
519 positive treatment outcomes including one site in *SORBS2* and *CYP2C18*.

520 Taken together, findings from genome-scale studies suggest that using
521 hypothesis-free approaches may be promising for identifying DNAm based
522 interindividual differences discerning treatment responders and non-responders.

523 *3.4 Brain stimulation therapies (ECT, TMS)*

524

525 Another alternative non-pharmacological treatment for MDD, which is now more
526 investigated for potential DNAm changes associated with treatment response, is brain
527 stimulation therapies such as ECT and TMS. TMS treatment involves stimulating the
528 brain via a magnetic field through the intact scalp. This exposure results in acute
529 depolarization and altered electrical activity in the underlying neurons; when applied
530 repetitively, TMS alters the excitability of the surrounding region for a sustained period
531 outlasting the TMS exposure and is thought to exert its therapeutic effects through
532 altered cortical excitability (Jannati, Oberman, Rotenberg, & Pascual-Leone, 2023). To
533 date, we have not identified any published studies examining the epigenetic profiles of
534 responders to TMS treatment however, a few studies ($N = 5$) have examined blood-
535 derived DNAm profiles in relation to response to ECT in MDD. ECT treatment is a
536 procedure in which electric currents are applied to the brain resulting in brief and
537 controlled generalized seizures (M. Li et al., 2020). Although the mechanism of action

538 underlying ECT treatment remains elusive, findings from previous research converge on
539 attributing its therapeutic effects to augmentations in neuroplasticity (Deng et al., 2022;
540 Ousdal et al., 2022).

541 The first ECT-related study by Kleimann and colleagues (Kleimann et al., 2015)
542 reported lower levels of *BDNF* promoter I, IV, and VI CpGs in the peripheral blood of 11
543 MDD patients who remitted following treatment using targeted bisulfite-pyrosequencing.
544 The authors identified a negative correlation between mean *BDNF* promoter methylation
545 levels in the blood and BDNF serum levels which have previously been observed by
546 others (Bouille et al., 2012). A more recent study by Moshny and Colleagues (Moschny,
547 Jahn, et al., 2020) investigated DNAm of two genes involved in the production of brain-
548 derived neurotrophic factor (BDNF), *t-PA* and *PAI-1*, as potential biomarkers of ECT
549 responsiveness when measured in peripheral blood; however, no differences in
550 baseline *t-PA* or *PAI-1* DNAm levels were detected between eventual ECT responders
551 vs. non-responders in either their first cohort (n=58) or in their second cohort (n=28).
552 Another preliminary study by the same research group (Moschny, Zindler, et al., 2020)
553 assessed genome-scale DNAm in peripheral blood mononuclear cells longitudinally in a
554 small (n=12) cohort of patients with MDD, identifying eight novel candidate genes
555 implicated in the response to ECT treatment after analyzing the variance of every
556 differentially methylated probe including *RNF175*, *RNF213*, *TBC1D14*, *TMC5*, *WSCD1*
557 *AC018685.2*, *AC098617.1*, *CLCN3P1*. Further, the DNAm of two CpG sites within the
558 genes *AQP10* and *TRERF1* were found to change during treatment.

559 An ECT study by Sirignano and colleagues (Sirignano et al., 2021) examined the
560 effects of ECT treatment on DNAm associated with response status in a small sample

561 of depressed patients (n = 34). The authors assessed DNAm at baseline and also post
562 completion of the treatment. In the binary response model of responders vs. non-
563 responder status, one genome-scale differentially methylated CpG site was identified in
564 *TNKS*, a protein-coding gene involved in biological processes such as the Wnt signaling
565 pathway and telomere length, both of which have previously been implicated in MDD
566 (Ridout, Ridout, Price, Sen, & Tyrka, 2016; Tayyab et al., 2018). Additionally, the author
567 identified two differentially methylated regions associated with reduction in depression
568 measures. Subsequently, the authors investigated CpG sites in candidate genes
569 (n=799), previously implicated in the literature to be involved with DNAm in
570 antidepressant medication. However, their analysis of candidate CpGs associated with
571 treatment ECT response revealed only one hypermethylated CpG in *FKBP5* to be
572 significant after multiple test corrections in their continuous response model.

573 Taken together, the few studies examining genome-scale DNAm patterns in
574 association with response to ECT treatment are too scarce to infer any trends among
575 the suggested differentially methylated loci leaving plenty of opportunities for future
576 studies. Many of the identified loci, from the above-mentioned preliminary efforts,
577 require replication in more extensive cohorts of patients with MDD.

578 **4. Discussion**

579

580 The objective of this review was to synthesize existing literature characterizing
581 DNAm patterns associated with treatment outcomes of patients undergoing various
582 forms of treatment for MDD. The literature reviewed included several candidate gene
583 and genome-scale studies examining different treatment modalities for MDD including
584 various antidepressants and ECT. Overall, epigenetic studies investigating DNAm

585 associated with treatment responses are in their infancy with a limited number of studies
586 that are frequently based on small sample sizes with inconsistent finding across studies.
587 Significant heterogeneity exists in study design, evaluated loci, tissue type examined,
588 methylation profiling approaches, treatment duration, dosage and type paired with other
589 patient clinical characteristics, rendering premature any conclusions about the clinical
590 utility of implicated loci. The scarcity of existing studies and the inconsistent nature of
591 the results across studies suggests the need for more research into DNAm patterns
592 associated with treatment outcomes; this is particularly true for non-pharmacological
593 approaches including brain stimulation therapies (e.g., TMS and ECT) and
594 psychotherapy, for which there remains a dearth of information in relation to response to
595 those treatments in MDD. Limited evidence from a study of children with anxiety
596 disorders undergoing cognitive behavior theory (Roberts et al., 2014) observed changes
597 in *SLC6A4* to be associated with treatment response, which gives hope for efforts to
598 characterize other treatment modalities that will follow.

599 Despite the lack of major convergence of differentially methylated loci among
600 most studies evaluating DNAm in relation to treatment response to MDD treatments,
601 *BDNF* perhaps emerges to be a notable exception. Hypomethylation of the *BDNF*
602 promoter has been implicated to be predictive of treatment non-response in two studies
603 with MDD patients (Tadic et al., 2014; Wang, Zhang, et al., 2018) while
604 hypermethylation of this locus has been associated with treatment success in three
605 studies(Hsieh et al., 2019; L. Li et al., 2021) including one study with patients suffering
606 from severe MDD (Lieb et al., 2018). Interestingly, the positive association between
607 *BDNF* promoter methylation and treatment responses has only been observed in
608 pharmacological treatment approaches. The only non-pharmacological study with

609 patients undergoing ECT treatment (Kleimann et al., 2015) observed the
610 hypomethylation of *BDNF* promoter CpGs among MDD remitters. Lastly, the finding of
611 Li and colleagues reporting significant hypermethylation of CpGs in *BDNF* in female
612 MDD remitters, but not in males, warrants further investigations into sex-specific DNAm
613 trends in relation to treatment response.

614 Another important finding from those initial studies is reports of medication-
615 specific differences in regards to DNAm associated with treatment response. Powel and
616 colleagues (2013) identified increased levels of baseline DNAm at *IL11* unit 4
617 associated with a higher treatment response among participants taking escitalopram but
618 an impaired response in those on nortriptyline therapy (Powell et al., 2013). If replicated
619 by additional independent studies, such findings show the potential of pharmaco-
620 epigenetic studies in informing future treatment decisions, while also highlighting the
621 need for more comprehensive future studies that stratify patients into groups according
622 to their treatment, if various antidepressants are utilized.

623 This literature review revealed several challenges and methodological
624 considerations, that might hinder progress on the successful identification of predictive,
625 DNAm-based biomarkers with clinical utility. Chief among such challenges is the relative
626 instability of epigenetic marks in comparison to genetic variation. For example, genetic
627 assays like GWAS measure allele frequencies of genetic variants among study
628 participants that are consistent across various cell types and stable over time. On the
629 other hand, epigenetic marks such as DNA methylation are dynamic and susceptible to
630 changes mediated by a range of environmental factors including aging, psychological
631 stress, and importantly, antidepressant medication (Moon et al., 2023; Wang, Zhang, et

632 al., 2018) and ECT (Moschny, Jahn, et al., 2020; Schurgers et al., 2022; Sirignano et
633 al., 2021). Several studies document mechanisms in which psychotropic medications
634 can alter the epigenome, making controlling for such alteration an important
635 consideration (Bayles et al., 2013; Gassen et al., 2015). For example, with regard to
636 DNAm, Gassen *et al.* demonstrated that the administration of paroxetine reduces the
637 phosphorylation and activity of DNA methyltransferase 1 in the peripheral blood of
638 patients with MDD(Gassen et al., 2015). Evidence from cell culture and murine studies
639 suggests additional mechanisms in which antidepressant medications can influence the
640 epigenome by alterations to methyl-CpG-binding protein domains (Csoka & Szyf, 2009)
641 or chromatin remodelers (Qiao et al., 2019) while emerging literature documents the
642 effects of antidepressant treatments on the methylome (Mohammadi et al., 2022; Moon
643 et al., 2023; Wang, Zhang, et al., 2018). Similarly, emerging longitudinal ECT DNAm
644 studies observed alterations in DNAm in patients undergoing ECT (Moschny, Zindler, et
645 al., 2020; Schurgers et al., 2022; Sirignano et al., 2021). Overcoming these challenges
646 requires carefully designed longitudinal efforts that ideally assess epigenetic marks at
647 multiple timepoints.

648 Another substantial challenge in the development of biomarkers that could
649 predict treatment responses based on DNAm is the significant heterogeneity in cell-type
650 specific DNAm (Loyfer et al., 2023), making the selection of the tissue in which such
651 biomarkers are assessed an important consideration. This is particularly true for the
652 assessment of psychiatric disorders like MDD, for which the organ central to the
653 disease, the brain, is not accessible in living patients. Therefore, investigators are
654 limited to peripheral tissues such as blood, saliva, or buccal tissue. Despite some
655 progress in the characterization of the concordance between epigenetic alteration

656 observed in blood and in the brain (Braun et al., 2019; Hannon, Lunnon, Schalkwyk, &
657 Mill, 2015; Loyfer et al., 2023), the question of which tissue is most reflective of the
658 brain remains to be answered by future studies. To overcome this challenge,
659 investigators could focus their efforts on CpGs with a high concordance between the
660 peripheral tissue of choice and the brain, informed by consulting publicly available
661 resources such as the Epigenomics Roadmap Consortium (Roadmap Epigenomics et
662 al., 2015), the PsychENCODE knowledge portal (Psych et al., 2015) or web tools such
663 as BECon (Edgar, Jones, Meaney, Turecki, & Kobor, 2017), Image-CpG (Braun et al.,
664 2019) or wgbstools (Loyfer et al., 2023). All studies identified in this review, and the vast
665 majority of epigenetic studies investigating DNAm in general, have been conducted in
666 peripheral blood.

667 Another important consideration is the limited scope of most DNAm treatment
668 response studies to date. The majority of conducted studies are candidate-gene studies
669 examining loci such as *SLC6A4*, *BDNF*, *IL-1*, *IL-6* & *IL-11*, *MAOA*, *HTR1A/1B*, and
670 *THH2*. Although the investigated genes to date are central to many important pathways
671 in depression such as monoamines, neurotrophins, and inflammation, it appears that
672 such pharmaco-epigenetic studies of the stress pathway are less represented. [Figure 4](#)
673 illustrates the genes and pathways assessed in extant candidate studies investigating
674 DNAm in relation to treatment responses. We identified only one candidate gene study
675 (Maier et al., 2023) focused on loci of the stress pathway in the context of DNAm
676 studies investigating response to MDD treatments, despite stress being a well-studied
677 pathway in MDD pathophysiology. Stress exposure, especially during developmentally
678 critical periods (Heim & Binder, 2012; Klengel et al., 2013), is the most well-
679 characterized risk factor in MDD (Z. Li et al., 2021) and has also been extensively

680 studied in the context of epigenetics (Penner-Goeke & Binder, 2019). Stress exposure
681 has been reported to induce structural changes in areas of the brain central to MDD
682 (McEwen, Nasca, & Gray, 2016) making the investigation of such loci in relation to their
683 association with a treatment response a plausible target for candidate gene studies.
684 One of those loci could be FK506 binding protein 5 (*FKBP5*), an important regulator of
685 the HPA-axis crucial to the termination of the stress response by a negative feedback
686 loop. Genomic variations of this locus have previously been associated with HPA-axis
687 alterations, recurrence of symptoms as well as response to treatment (Binder et al.,
688 2004). Additionally, findings from cell-culture and animal studies, demonstrate the
689 breadth of mechanism in which *FKBP5* exerts its effect on this locus with other stress-
690 related pathways including BDNF (Gassen et al., 2015) and the immune system(Annett,
691 Moore, & Robson, 2020). Other genes that could serve as a potential target for
692 pharmaco-epigenetic studies focused on treatment response could be Corticotropin-
693 releasing factor-binding protein (*CRHB*) or the glucocorticoid receptor (*NR3C1*) due to
694 their roles in the stress pathway and evidence from previous clinical studies
695 (Humphreys et al., 2019; Roy, Dunbar, Shelton, & Dwivedi, 2017).

696 Despite such opportunities for candidate gene studies, the application of
697 genome-scale approaches will be more appropriate to elucidate potentially new
698 biological pathways associated with MDD. Epigenome-wide association studies (EWAS)
699 could reveal novel epigenetic loci involved in treatment response. Smaller studies could
700 benefit from larger consortia efforts that combine data to have enough power to detect
701 epigenome-scale differences (P. C. Tsai & Bell, 2015). Another important consideration
702 for genome-scale approaches is the heterogeneity in technologies used. While one
703 study (Takeuchi et al., 2017) used older array technology assessing 450,000 CpGs, four

704 studies employed the Epic Methylation array capable of interrogating 850,000
705 probes(Engelmann et al., 2022; Ju et al., 2019; Martinez-Pinteno et al., 2021; Sirignano
706 et al., 2021). Moshny and Colleagues used the Nextseq 550 with EPIC kit capable of
707 interrogating over 3.3 million CpGs (Moschny, Zindler, et al., 2020). Such differences in
708 the scope of the interrogated CpGs can make it difficult to compare findings, especially
709 among loci that are not covered by both of the above-mentioned microarrays.
710 Furthermore, the number of CpGs covered by current Illumina BeadChip platforms only
711 accounts for around 3% of all GpG sites in the human genome (Bibikova et al., 2011)
712 leaving ample opportunities for future studies using whole-genome bisulfite sequencing
713 (WGBS).

714 An additional limitation that could potentially be addressed in the future by WGBS
715 studies is that studies to date have exclusively focused on DNAm at CpG dinucleotides.
716 Compelling evidence reports on the wide distribution of cytosine methylation preceding
717 adenine, thymine, or other cytosine (non-CpG methylation) in several brain tissues (de
718 Mendoza et al., 2021) and neurons with non-CpG methylation accounting for as much
719 as 25% of the methylation observed in neurons (Guo et al., 2014). WGBS studies offer
720 opportunities to identify methylation patterns important in the pathogenesis and
721 treatment response of MDD in previously unexplored loci including non-CpG
722 methylation.

723 **5. Conclusion**

724

725 It is evident that pharmaco-epigenetic studies characterizing DNAm patterns
726 associated with treatment outcomes in MDD are in an early stage. Many efforts suffer
727 from insufficient statistical power due to their limited sample sizes hindering the

728 detection of biomarkers with predictive utility. The majority of findings from previous
729 studies have yet to be replicated in independent cohorts suggesting that well-designed
730 studies investigating the DNAm associated with a treatment response have much to
731 contribute. Those studies will be most informative when multiple genomic measures are
732 integrated into epigenetic studies of depression (Engelmann et al., 2022; Fuh, Fiori,
733 Turecki, Nagy, & Li, 2023; Ju et al., 2019; Wang, Lv, et al., 2018; Wang, Zhang, et al.,
734 2018), in order to gain more wholistic insights into the functional relevance of observed
735 epigenetic variation in MDD treatment response. Assessing DNAm at multiple
736 timepoints throughout the treatment could be particularly informative and perhaps bring
737 clinically significant opportunities. For example, DNAm profiled early in the course of a
738 new intervention could elucidate methylation signatures that are associated with an
739 early treatment response or treatment resistance, and in turn, inform the likelihood of
740 remission at the end of the treatment. This would enable clinicians to be make timely
741 adjustments, sparing valuable time for patients, reduce suffering, mitigate the burden of
742 side effects, and cut healthcare expenditures.

743 In the future, well-designed studies may help elucidate additional biomarkers
744 that can predict MDD treatment response and potentially inform treatment options for a
745 patient suffering from treatment-resistant depression. The considerable cost of
746 conducting controlled clinical trials, environmental effects on the epigenome and inter-
747 individual epigenomic variation pose challenges when it comes to efforts to reproduce
748 findings in larger cohorts. Findings from smaller studies should be considered
749 preliminary and should be replicated in larger cohorts. Larger collaborative efforts
750 including several sites are key to overcoming sample size limitations. Previous efforts
751 such as the STAR*D project (Rush et al., 2004) are a good example of such

752 collaborative efforts. Additionally, there is increasing evidence that using predictive
753 models based on multimodal data fares much better in the prediction of treatment
754 outcomes than low-dimensional data (Gao et al., 2022; Lee et al., 2018). In this regard,
755 future efforts should integrate genetic information with epigenetic approaches to identify
756 more reliable prediction models. Approaches akin to the ones applied by Wang and
757 colleagues (Wang, Zhang, et al., 2018) in which life stress measures combined with
758 DNAm gave the best prediction of treatment response, or Powell and colleagues
759 reporting the interaction of *IL11* methylation and the rs1126757 variation (Powell et al.,
760 2013) are great examples of how multiple genetic, epigenetic and psychosocial
761 predictors can be combined to inform future response prediction tools. Similarly, multi-
762 omics study designs like the one employed by Ju and colleagues (Ju et al., 2019) or
763 Schurgers *et al.* (Schurgers et al., 2022), integrating DNAm measures with
764 transcriptomic data (Ju et al., 2019; Schurgers et al., 2022), can provide valuable
765 functional insights of MDD pathophysiology and inform about interplay between gene
766 expression and DNAm. Lastly, future efforts could expand on treatments other than
767 antidepressants and ECT by investigating DNAm in treatment responders undergoing
768 other forms of treatments such as TMS or psychotherapy, while also including
769 participants of ancestries beyond Europeans and Asians.

770

771

772 **Acknowledgments and Disclosures**

773 J. Dahrendorff was supported by the College of Public Health Doctoral Fellowship of the
774 University of South Florida. We would like to thank Allison Howard for her instructions
775 on effective literature searching for the students in the College of Public Health. Figures
776 1 and 4 created with BioRender (www.biorender.com)

Figure Legends

Figure 1. Schematic representation of opportunities for pharmaco-epigenetic approaches in MDD treatment. Created with BioRender.com.

Figure 2. Literature search diagram showing the filtering and article selection process.

Figure 3. Increase of studies investigating DNAm signatures in MDD associated with a treatment response over the last decade.

Figure 4. Pathways of Significance in Pharmaco-epigenetic Studies of MDD Treatment Response and Opportunities for Future Efforts. Circles indicate candidate gene studies of a given loci that assessed DNAm in relation to treatment outcomes in patients treated using antidepressant medication. Triangles indicate studies that assessed DNAm in relation to outcomes in patients undergoing brain stimulation therapies. Created with BioRender.com.

References

- Andersson, N. W., Gustafsson, L. N., Okkels, N., Taha, F., Cole, S. W., Munk-Jorgensen, P., & Goodwin, R. D. (2015). Depression and the risk of autoimmune disease: a nationally representative, prospective longitudinal study. *Psychol Med*, *45*(16), 3559-3569. doi:10.1017/S0033291715001488
- Annett, S., Moore, G., & Robson, T. (2020). FK506 binding proteins and inflammation related signalling pathways; basic biology, current status and future prospects for pharmacological intervention. *Pharmacol Ther*, *215*, 107623. doi:10.1016/j.pharmthera.2020.107623
- Arnaud, A. M., Brister, T. S., Duckworth, K., Foxworth, P., Fulwider, T., Suthoff, E. D., . . . Reinhart, M. L. (2022). Impact of Major Depressive Disorder on Comorbidities: A Systematic Literature Review. *J Clin Psychiatry*, *83*(6). doi:10.4088/JCP.21r14328
- Association, A. P. (2013). *Diagnostic and Statistical Manual of Mental Disorders* (5th ed.). Washington, DC.
- Bai, S., Guo, W., Feng, Y., Deng, H., Li, G., Nie, H., . . . Tang, Z. (2020). Efficacy and safety of anti-inflammatory agents for the treatment of major depressive disorder: a systematic review and meta-analysis of randomised controlled trials. *J Neurol Neurosurg Psychiatry*, *91*(1), 21-32. doi:10.1136/jnnp-2019-320912
- Bajpai, A., Verma, A. K., Srivastava, M., & Srivastava, R. (2014). Oxidative stress and major depression. *J Clin Diagn Res*, *8*(12), CC04-07. doi:10.7860/JCDR/2014/10258.5292
- Bayles, R., Baker, E. K., Jowett, J. B., Barton, D., Esler, M., El-Osta, A., & Lambert, G. (2013). Methylation of the SLC6a2 gene promoter in major depression and panic disorder. *PLoS One*, *8*(12), e83223. doi:10.1371/journal.pone.0083223
- Beurel, E., Toups, M., & Nemeroff, C. B. (2020). The Bidirectional Relationship of Depression and Inflammation: Double Trouble. *Neuron*, *107*(2), 234-256. doi:10.1016/j.neuron.2020.06.002
- Bibikova, M., Barnes, B., Tsan, C., Ho, V., Klotzle, B., Le, J. M., . . . Shen, R. (2011). High density DNA methylation array with single CpG site resolution. *Genomics*, *98*(4), 288-295. doi:10.1016/j.ygeno.2011.07.007
- Binder, E. B., Salyakina, D., Lichtner, P., Wochnik, G. M., Ising, M., Putz, B., . . . Muller-Myhsok, B. (2004). Polymorphisms in FKBP5 are associated with increased recurrence of depressive episodes and rapid response to antidepressant treatment. *Nat Genet*, *36*(12), 1319-1325. doi:10.1038/ng1479
- Bjornsson, H. T., Sigurdsson, M. I., Fallin, M. D., Irizarry, R. A., Aspelund, T., Cui, H., . . . Feinberg, A. P. (2008). Intra-individual change over time in DNA methylation with familial clustering. *JAMA*, *299*(24), 2877-2883. doi:10.1001/jama.299.24.2877
- Braun, P. R., Han, S., Hing, B., Nagahama, Y., Gaul, L. N., Heinzman, J. T., . . . Shinozaki, G. (2019). Genome-wide DNA methylation comparison between live human brain and peripheral tissues within individuals. *Transl Psychiatry*, *9*(1), 47. doi:10.1038/s41398-019-0376-y
- Breitling, L. P., Yang, R., Korn, B., Burwinkel, B., & Brenner, H. (2011). Tobacco-smoking-related differential DNA methylation: 27K discovery and replication. *Am J Hum Genet*, *88*(4), 450-457. doi:10.1016/j.ajhg.2011.03.003
- Brunner, E. J., Shipley, M. J., Britton, A. R., Stansfeld, S. A., Heuschmann, P. U., Rudd, A. G., . . . Kivimaki, M. (2014). Depressive disorder, coronary heart disease, and stroke: dose-response and reverse causation effects in the Whitehall II cohort study. *Eur J Prev Cardiol*, *21*(3), 340-346. doi:10.1177/2047487314520785
- Bus, B. A., Molendijk, M. L., Tendolkar, I., Penninx, B. W., Prickaerts, J., Elzinga, B. M., & Voshaar, R. C. (2015). Chronic depression is associated with a pronounced decrease in serum brain-derived neurotrophic factor over time. *Mol Psychiatry*, *20*(5), 602-608. doi:10.1038/mp.2014.83

- Casarotto, P. C., Giryh, M., Fred, S. M., Kovaleva, V., Moliner, R., Enkavi, G., . . . Castren, E. (2021). Antidepressant drugs act by directly binding to TRKB neurotrophin receptors. *Cell*, *184*(5), 1299-1313 e1219. doi:10.1016/j.cell.2021.01.034
- Castren, E., & Monteggia, L. M. (2021). Brain-Derived Neurotrophic Factor Signaling in Depression and Antidepressant Action. *Biol Psychiatry*, *90*(2), 128-136. doi:10.1016/j.biopsych.2021.05.008
- Cecil, C. A. M., Zhang, Y., & Nolte, T. (2020). Childhood maltreatment and DNA methylation: A systematic review. *Neurosci Biobehav Rev*, *112*, 392-409. doi:10.1016/j.neubiorev.2020.02.019
- Chang, Z., Lichtenstein, P., Asherson, P. J., & Larsson, H. (2013). Developmental twin study of attention problems: high heritabilities throughout development. *JAMA Psychiatry*, *70*(3), 311-318. doi:10.1001/jamapsychiatry.2013.287
- Chilmonczyk, Z., Bojarski, A. J., Pilc, A., & Sylte, I. (2015). Functional Selectivity and Antidepressant Activity of Serotonin 1A Receptor Ligands. *Int J Mol Sci*, *16*(8), 18474-18506. doi:10.3390/ijms160818474
- Coppen, A. (1967). The biochemistry of affective disorders. *Br J Psychiatry*, *113*(504), 1237-1264. doi:10.1192/bjp.113.504.1237
- Csoka, A. B., & Szyf, M. (2009). Epigenetic side-effects of common pharmaceuticals: a potential new field in medicine and pharmacology. *Med Hypotheses*, *73*(5), 770-780. doi:10.1016/j.mehy.2008.10.039
- de Mendoza, A., Poppe, D., Buckberry, S., Pflueger, J., Albertin, C. B., Daish, T., . . . Lister, R. (2021). The emergence of the brain non-CpG methylation system in vertebrates. *Nat Ecol Evol*, *5*(3), 369-378. doi:10.1038/s41559-020-01371-2
- Deng, Z. D., Argyelan, M., Miller, J., Quinn, D. K., Lloyd, M., Jones, T. R., . . . Abbott, C. C. (2022). Electroconvulsive therapy, electric field, neuroplasticity, and clinical outcomes. *Mol Psychiatry*, *27*(3), 1676-1682. doi:10.1038/s41380-021-01380-y
- Diniz, B. S., Butters, M. A., Albert, S. M., Dew, M. A., & Reynolds, C. F., 3rd. (2013). Late-life depression and risk of vascular dementia and Alzheimer's disease: systematic review and meta-analysis of community-based cohort studies. *Br J Psychiatry*, *202*(5), 329-335. doi:10.1192/bjp.bp.112.118307
- Domschke, K., Tidow, N., Schwarte, K., Deckert, J., Lesch, K. P., Arolt, V., . . . Baune, B. T. (2014). Serotonin transporter gene hypomethylation predicts impaired antidepressant treatment response. *Int J Neuropsychopharmacol*, *17*(8), 1167-1176. doi:10.1017/S146114571400039X
- Domschke, K., Tidow, N., Schwarte, K., Ziegler, C., Lesch, K. P., Deckert, J., . . . Baune, B. T. (2015). Pharmacoeugenetics of depression: no major influence of MAO-A DNA methylation on treatment response. *J Neural Transm (Vienna)*, *122*(1), 99-108. doi:10.1007/s00702-014-1227-x
- Draganov, M., Arranz, M. J., Salazar, J., de Diego-Adelino, J., Gallego-Fabrega, C., Jubero, M., . . . Portella, M. J. (2019). Association study of polymorphisms within inflammatory genes and methylation status in treatment response in major depression. *Eur Psychiatry*, *60*, 7-13. doi:10.1016/j.eurpsy.2019.05.003
- Edgar, R. D., Jones, M. J., Meaney, M. J., Turecki, G., & Kobor, M. S. (2017). BECon: a tool for interpreting DNA methylation findings from blood in the context of brain. *Transl Psychiatry*, *7*(8), e1187. doi:10.1038/tp.2017.171
- Engelmann, J., Zillich, L., Frank, J., Wagner, S., Cetin, M., Herzog, D. P., . . . Streit, F. (2022). Epigenetic signatures in antidepressant treatment response: a methylome-wide association study in the EMC trial. *Transl Psychiatry*, *12*(1), 268. doi:10.1038/s41398-022-02032-7
- Fakhoury, M. (2015). New insights into the neurobiological mechanisms of major depressive disorders. *Gen Hosp Psychiatry*, *37*(2), 172-177. doi:10.1016/j.genhosppsych.2015.01.005
- Fan, R., Hua, T., Shen, T., Jiao, Z., Yue, Q., Chen, B., & Xu, Z. (2021). Identifying patients with major depressive disorder based on tryptophan hydroxylase-2 methylation using machine learning algorithms. *Psychiatry Res*, *306*, 114258. doi:10.1016/j.psychres.2021.114258

- Fleshner, M., Frank, M., & Maier, S. F. (2017). Danger Signals and Inflammasomes: Stress-Evoked Sterile Inflammation in Mood Disorders. *Neuropsychopharmacology*, *42*(1), 36-45. doi:10.1038/npp.2016.125
- Flint, J. (2023). The genetic basis of major depressive disorder. *Mol Psychiatry*. doi:10.1038/s41380-023-01957-9
- Flint, J., & Kendler, K. S. (2014). The genetics of major depression. *Neuron*, *81*(3), 484-503. doi:10.1016/j.neuron.2014.01.027
- Fuh, S. C., Fiori, L. M., Turecki, G., Nagy, C., & Li, Y. (2023). Multi-omic modeling of antidepressant response implicates dynamic immune and inflammatory changes in individuals who respond to treatment. *PLoS One*, *18*(5), e0285123. doi:10.1371/journal.pone.0285123
- Gao, C., Xu, Z., Tan, T., Chen, Z., Shen, T., Chen, L., . . . Yuan, Y. (2022). Combination of spontaneous regional brain activity and HTR1A/1B DNA methylation to predict early responses to antidepressant treatments in MDD. *J Affect Disord*, *302*, 249-257. doi:10.1016/j.jad.2022.01.098
- Garcia-Gonzalez, J., Tansey, K. E., Hauser, J., Henigsberg, N., Maier, W., Mors, O., . . . Fabbri, C. (2017). Pharmacogenetics of antidepressant response: A polygenic approach. *Prog Neuropsychopharmacol Biol Psychiatry*, *75*, 128-134. doi:10.1016/j.pnpbp.2017.01.011
- Gartlehner, G., Wagner, G., Matyas, N., Titscher, V., Greimel, J., Lux, L., . . . Lohr, K. N. (2017). Pharmacological and non-pharmacological treatments for major depressive disorder: review of systematic reviews. *BMJ Open*, *7*(6), e014912. doi:10.1136/bmjopen-2016-014912
- Gassen, N. C., Fries, G. R., Zannas, A. S., Hartmann, J., Zschocke, J., Hafner, K., . . . Rein, T. (2015). Chaperoning epigenetics: FKBP51 decreases the activity of DNMT1 and mediates epigenetic effects of the antidepressant paroxetine. *Sci Signal*, *8*(404), ra119. doi:10.1126/scisignal.aac7695
- Gasso, P., Rodriguez, N., Blazquez, A., Monteagudo, A., Boloc, D., Plana, M. T., . . . Mas, S. (2017). Epigenetic and genetic variants in the HTR1B gene and clinical improvement in children and adolescents treated with fluoxetine. *Prog Neuropsychopharmacol Biol Psychiatry*, *75*, 28-34. doi:10.1016/j.pnpbp.2016.12.003
- Giri, A. K., Bharadwaj, S., Banerjee, P., Chakraborty, S., Parekatt, V., Rajashekar, D., . . . Bharadwaj, D. (2017). DNA methylation profiling reveals the presence of population-specific signatures correlating with phenotypic characteristics. *Mol Genet Genomics*, *292*(3), 655-662. doi:10.1007/s00438-017-1298-0
- Goodwin, R. D., Dierker, L. C., Wu, M., Galea, S., Hoven, C. W., & Weinberger, A. H. (2022). Trends in U.S. Depression Prevalence From 2015 to 2020: The Widening Treatment Gap. *Am J Prev Med*, *63*(5), 726-733. doi:10.1016/j.amepre.2022.05.014
- Guo, J. U., Su, Y., Shin, J. H., Shin, J., Li, H., Xie, B., . . . Song, H. (2014). Distribution, recognition and regulation of non-CpG methylation in the adult mammalian brain. *Nat Neurosci*, *17*(2), 215-222. doi:10.1038/nn.3607
- Hamon, M., & Blier, P. (2013). Monoamine neurocircuitry in depression and strategies for new treatments. *Prog Neuropsychopharmacol Biol Psychiatry*, *45*, 54-63. doi:10.1016/j.pnpbp.2013.04.009
- Hannon, E., Lunnon, K., Schalkwyk, L., & Mill, J. (2015). Interindividual methylomic variation across blood, cortex, and cerebellum: implications for epigenetic studies of neurological and neuropsychiatric phenotypes. *Epigenetics*, *10*(11), 1024-1032. doi:10.1080/15592294.2015.1100786
- Hardeveld, F., Spijker, J., De Graaf, R., Hendriks, S. M., Licht, C. M., Nolen, W. A., . . . Beekman, A. T. (2013). Recurrence of major depressive disorder across different treatment settings: results from the NESDA study. *J Affect Disord*, *147*(1-3), 225-231. doi:10.1016/j.jad.2012.11.008
- Hasin, D. S., Sarvet, A. L., Meyers, J. L., Saha, T. D., Ruan, W. J., Stohl, M., & Grant, B. F. (2018). Epidemiology of Adult DSM-5 Major Depressive Disorder and Its Specifiers in the United States. *JAMA Psychiatry*, *75*(4), 336-346. doi:10.1001/jamapsychiatry.2017.4602

- Heim, C., & Binder, E. B. (2012). Current research trends in early life stress and depression: review of human studies on sensitive periods, gene-environment interactions, and epigenetics. *Exp Neurol*, 233(1), 102-111. doi:10.1016/j.expneurol.2011.10.032
- Hou, L., Zhang, X., Wang, D., & Baccarelli, A. (2012). Environmental chemical exposures and human epigenetics. *Int J Epidemiol*, 41(1), 79-105. doi:10.1093/ije/dyr154
- Hsieh, M. T., Lin, C. C., Lee, C. T., & Huang, T. L. (2019). Abnormal Brain-Derived Neurotrophic Factor Exon IX Promoter Methylation, Protein, and mRNA Levels in Patients with Major Depressive Disorder. *J Clin Med*, 8(5). doi:10.3390/jcm8050568
- Humphreys, K. L., Moore, S. R., Davis, E. G., MacIsaac, J. L., Lin, D. T. S., Kobor, M. S., & Gotlib, I. H. (2019). DNA methylation of HPA-axis genes and the onset of major depressive disorder in adolescent girls: a prospective analysis. *Transl Psychiatry*, 9(1), 245. doi:10.1038/s41398-019-0582-7
- Iga, J., Watanabe, S. Y., Numata, S., Umehara, H., Nishi, A., Kinoshita, M., . . . Ohmori, T. (2016). Association study of polymorphism in the serotonin transporter gene promoter, methylation profiles, and expression in patients with major depressive disorder. *Hum Psychopharmacol*, 31(3), 193-199. doi:10.1002/hup.2527
- Jannati, A., Oberman, L. M., Rotenberg, A., & Pascual-Leone, A. (2023). Assessing the mechanisms of brain plasticity by transcranial magnetic stimulation. *Neuropsychopharmacology*, 48(1), 191-208. doi:10.1038/s41386-022-01453-8
- Jia, H., Zack, M. M., Thompson, W. W., Crosby, A. E., & Gottesman, II. (2015). Impact of depression on quality-adjusted life expectancy (QALE) directly as well as indirectly through suicide. *Soc Psychiatry Psychiatr Epidemiol*, 50(6), 939-949. doi:10.1007/s00127-015-1019-0
- Jin, Y., Sun, L. H., Yang, W., Cui, R. J., & Xu, S. B. (2019). The Role of BDNF in the Neuroimmune Axis Regulation of Mood Disorders. *Front Neurol*, 10, 515. doi:10.3389/fneur.2019.00515
- Ju, C., Fiori, L. M., Belzeaux, R., Theroux, J. F., Chen, G. G., Aouabed, Z., . . . Turecki, G. (2019). Integrated genome-wide methylation and expression analyses reveal functional predictors of response to antidepressants. *Transl Psychiatry*, 9(1), 254. doi:10.1038/s41398-019-0589-0
- Kang, H. J., Kim, J. M., Stewart, R., Kim, S. Y., Bae, K. Y., Kim, S. W., . . . Yoon, J. S. (2013). Association of SLC6A4 methylation with early adversity, characteristics and outcomes in depression. *Prog Neuropsychopharmacol Biol Psychiatry*, 44, 23-28. doi:10.1016/j.pnpbp.2013.01.006
- Kendler, K. S., Gatz, M., Gardner, C. O., & Pedersen, N. L. (2006). A Swedish national twin study of lifetime major depression. *Am J Psychiatry*, 163(1), 109-114. doi:10.1176/appi.ajp.163.1.109
- Kendler, K. S., Ohlsson, H., Lichtenstein, P., Sundquist, J., & Sundquist, K. (2018). The Genetic Epidemiology of Treated Major Depression in Sweden. *Am J Psychiatry*, 175(11), 1137-1144. doi:10.1176/appi.ajp.2018.17111251
- Kim, I. B., Lee, J. H., & Park, S. C. (2022). The Relationship between Stress, Inflammation, and Depression. *Biomedicines*, 10(8). doi:10.3390/biomedicines10081929
- Kim, J. K., Samaranayake, M., & Pradhan, S. (2009). Epigenetic mechanisms in mammals. *Cell Mol Life Sci*, 66(4), 596-612. doi:10.1007/s00018-008-8432-4
- Kim, J. M., Stewart, R., Kang, H. J., Bae, K. Y., Kim, S. W., Shin, I. S., . . . Yoon, J. S. (2015). BDNF methylation and depressive disorder in acute coronary syndrome: The K-DEPACS and EsDEPACS studies. *Psychoneuroendocrinology*, 62, 159-165. doi:10.1016/j.psyneuen.2015.08.013
- Kishi, T., Yoshimura, R., Ikuta, T., & Iwata, N. (2017). Brain-Derived Neurotrophic Factor and Major Depressive Disorder: Evidence from Meta-Analyses. *Front Psychiatry*, 8, 308. doi:10.3389/fpsy.2017.00308
- Kleimann, A., Kotsiari, A., Sperling, W., Groschl, M., Heberlein, A., Kahl, K. G., . . . Frieeling, H. (2015). BDNF serum levels and promoter methylation of BDNF exon I, IV and VI in depressed patients receiving electroconvulsive therapy. *J Neural Transm (Vienna)*, 122(6), 925-928. doi:10.1007/s00702-014-1336-6

- Klengel, T., & Binder, E. B. (2015). Epigenetics of Stress-Related Psychiatric Disorders and Gene x Environment Interactions. *Neuron*, *86*(6), 1343-1357. doi:10.1016/j.neuron.2015.05.036
- Klengel, T., Mehta, D., Anacker, C., Rex-Haffner, M., Pruessner, J. C., Pariante, C. M., . . . Binder, E. B. (2013). Allele-specific FKBP5 DNA demethylation mediates gene-childhood trauma interactions. *Nat Neurosci*, *16*(1), 33-41. doi:10.1038/nn.3275
- Kozisek, M. E., Middlemas, D., & Bylund, D. B. (2008). Brain-derived neurotrophic factor and its receptor tropomyosin-related kinase B in the mechanism of action of antidepressant therapies. *Pharmacol Ther*, *117*(1), 30-51. doi:10.1016/j.pharmthera.2007.07.001
- Kringel, D., Malkusch, S., & Lotsch, J. (2021). Drugs and Epigenetic Molecular Functions. A Pharmacological Data Scientometric Analysis. *Int J Mol Sci*, *22*(14). doi:10.3390/ijms22147250
- Lassale, C., Batty, G. D., Baghdadli, A., Jacka, F., Sanchez-Villegas, A., Kivimaki, M., & Akbaraly, T. (2019). Healthy dietary indices and risk of depressive outcomes: a systematic review and meta-analysis of observational studies. *Mol Psychiatry*, *24*(7), 965-986. doi:10.1038/s41380-018-0237-8
- Lee, Y., Ragguett, R. M., Mansur, R. B., Boutilier, J. J., Rosenblat, J. D., Trevizol, A., . . . McIntyre, R. S. (2018). Applications of machine learning algorithms to predict therapeutic outcomes in depression: A meta-analysis and systematic review. *J Affect Disord*, *241*, 519-532. doi:10.1016/j.jad.2018.08.073
- Li, L., Wang, T., Chen, S., Yue, Y., Xu, Z., & Yuan, Y. (2021). DNA methylations of brain-derived neurotrophic factor exon VI are associated with major depressive disorder and antidepressant-induced remission in females. *J Affect Disord*, *295*, 101-107. doi:10.1016/j.jad.2021.08.016
- Li, M., Yao, X., Sun, L., Zhao, L., Xu, W., Zhao, H., . . . Cui, R. (2020). Effects of Electroconvulsive Therapy on Depression and Its Potential Mechanism. *Front Psychol*, *11*, 80. doi:10.3389/fpsyg.2020.00080
- Li, Z., Ruan, M., Chen, J., & Fang, Y. (2021). Major Depressive Disorder: Advances in Neuroscience Research and Translational Applications. *Neurosci Bull*, *37*(6), 863-880. doi:10.1007/s12264-021-00638-3
- Lieb, K., Dreimuller, N., Wagner, S., Schlicht, K., Falter, T., Neyazi, A., . . . Frieling, H. (2018). BDNF Plasma Levels and BDNF Exon IV Promoter Methylation as Predictors for Antidepressant Treatment Response. *Front Psychiatry*, *9*, 511. doi:10.3389/fpsyg.2018.00511
- Lotsch, J., Schneider, G., Reker, D., Parnham, M. J., Schneider, P., Geisslinger, G., & Doehring, A. (2013). Common non-epigenetic drugs as epigenetic modulators. *Trends Mol Med*, *19*(12), 742-753. doi:10.1016/j.molmed.2013.08.006
- Loyfer, N., Magenheimer, J., Peretz, A., Cann, G., Bredno, J., Klochendler, A., . . . Kaplan, T. (2023). A DNA methylation atlas of normal human cell types. *Nature*, *613*(7943), 355-364. doi:10.1038/s41586-022-05580-6
- Luo, L., Hu, J., Huang, R., Kong, D., Hu, W., Ding, Y., & Yu, H. (2023). The association between dietary inflammation index and depression. *Front Psychiatry*, *14*, 1131802. doi:10.3389/fpsyg.2023.1131802
- Maier, H. B., Moschny, N., Eberle, F., Jahn, K., Folsche, T., Schulke, R., . . . Neyazi, A. (2023). DNA Methylation of POMC and NR3C1-1F and Its Implication in Major Depressive Disorder and Electroconvulsive Therapy. *Pharmacopsychiatry*, *56*(2), 64-72. doi:10.1055/a-2034-6536
- Martinez-Pinteno, A., Rodriguez, N., Blazquez, A., Plana, M. T., Varela, E., Gasso, P., . . . Mas, S. (2021). DNA Methylation of Fluoxetine Response in Child and Adolescence: Preliminary Results. *Pharmgenomics Pers Med*, *14*, 459-467. doi:10.2147/PGPM.S289480
- Martins, J., Czamara, D., Sauer, S., Rex-Haffner, M., Dittrich, K., Dorr, P., . . . Binder, E. B. (2021). Childhood adversity correlates with stable changes in DNA methylation trajectories in children and converges with epigenetic signatures of prenatal stress. *Neurobiol Stress*, *15*, 100336. doi:10.1016/j.ynstr.2021.100336

- Maugeri, A., & Barchitta, M. (2020). How Dietary Factors Affect DNA Methylation: Lesson from Epidemiological Studies. *Medicina (Kaunas)*, *56*(8). doi:10.3390/medicina56080374
- McEwen, B. S., Nasca, C., & Gray, J. D. (2016). Stress Effects on Neuronal Structure: Hippocampus, Amygdala, and Prefrontal Cortex. *Neuropsychopharmacology*, *41*(1), 3-23. doi:10.1038/npp.2015.171
- McGuffin, P., Rijdsdijk, F., Andrew, M., Sham, P., Katz, R., & Cardno, A. (2003). The heritability of bipolar affective disorder and the genetic relationship to unipolar depression. *Arch Gen Psychiatry*, *60*(5), 497-502. doi:10.1001/archpsyc.60.5.497
- Meerman, J. J., Ter Hark, S. E., Janzing, J. G. E., & Coenen, M. J. H. (2022). The Potential of Polygenic Risk Scores to Predict Antidepressant Treatment Response in Major Depression: A Systematic Review. *J Affect Disord*, *304*, 1-11. doi:10.1016/j.jad.2022.02.015
- Moffitt, T. E., Caspi, A., Taylor, A., Kokaua, J., Milne, B. J., Polanczyk, G., & Poulton, R. (2010). How common are common mental disorders? Evidence that lifetime prevalence rates are doubled by prospective versus retrospective ascertainment. *Psychol Med*, *40*(6), 899-909. doi:10.1017/S0033291709991036
- Mohammadi, S., Beh-Pajoo, A., Ahmadimanesh, M., Amini, M., Ghazi-Khansari, M., Moallem, S. A., . . . Ghahremani, M. H. (2022). Evaluation of DNA methylation in BDNF, SLC6A4, NR3C1 and FKBP5 before and after treatment with selective serotonin-reuptake inhibitor in major depressive disorder. *Epigenomics*, *14*(20), 1269-1280. doi:10.2217/epi-2022-0246
- Moon, Y. K., Kim, H., Kim, S., Lim, S. W., & Kim, D. K. (2023). Influence of antidepressant treatment on SLC6A4 methylation in Korean patients with major depression. *Am J Med Genet B Neuropsychiatr Genet*, *192*(1-2), 28-37. doi:10.1002/ajmg.b.32921
- Morilak, D. A., & Frazer, A. (2004). Antidepressants and brain monoaminergic systems: a dimensional approach to understanding their behavioural effects in depression and anxiety disorders. *Int J Neuropsychopharmacol*, *7*(2), 193-218. doi:10.1017/S1461145704004080
- Moschny, N., Jahn, K., Bajbouj, M., Maier, H. B., Ballmaier, M., Khan, A. Q., . . . Neyazi, A. (2020). DNA Methylation of the t-PA Gene Differs Between Various Immune Cell Subtypes Isolated From Depressed Patients Receiving Electroconvulsive Therapy. *Front Psychiatry*, *11*, 571. doi:10.3389/fpsy.2020.00571
- Moschny, N., Zindler, T., Jahn, K., Dorda, M., Davenport, C. F., Wiehlmann, L., . . . Frieling, H. (2020). Novel candidate genes for ECT response prediction—a pilot study analyzing the DNA methylome of depressed patients receiving electroconvulsive therapy. *Clin Epigenetics*, *12*(1), 114. doi:10.1186/s13148-020-00891-9
- Neyazi, A., Theilmann, W., Brandt, C., Rantamaki, T., Matsui, N., Rhein, M., . . . Loscher, W. (2018). P11 promoter methylation predicts the antidepressant effect of electroconvulsive therapy. *Transl Psychiatry*, *8*(1), 25. doi:10.1038/s41398-017-0077-3
- Ng, C. H., Easteal, S., Tan, S., Schweitzer, I., Ho, B. K., & Aziz, S. (2006). Serotonin transporter polymorphisms and clinical response to sertraline across ethnicities. *Prog Neuropsychopharmacol Biol Psychiatry*, *30*(5), 953-957. doi:10.1016/j.pnpbp.2006.02.015
- Nishiyama, A., & Nakanishi, M. (2021). Navigating the DNA methylation landscape of cancer. *Trends Genet*, *37*(11), 1012-1027. doi:10.1016/j.tig.2021.05.002
- Okada, S., Morinobu, S., Fuchikami, M., Segawa, M., Yokomaku, K., Kataoka, T., . . . Mimura, M. (2014). The potential of SLC6A4 gene methylation analysis for the diagnosis and treatment of major depression. *J Psychiatr Res*, *53*, 47-53. doi:10.1016/j.jpsychires.2014.02.002
- Ottenhof, K. W., Sild, M., Levesque, M. L., Ruhe, H. G., & Booij, L. (2018). TPH2 polymorphisms across the spectrum of psychiatric morbidity: A systematic review and meta-analysis. *Neurosci Biobehav Rev*, *92*, 29-42. doi:10.1016/j.neubiorev.2018.05.018
- Ousdal, O. T., Brancati, G. E., Kessler, U., Erchinger, V., Dale, A. M., Abbott, C., & Oltedal, L. (2022). The Neurobiological Effects of Electroconvulsive Therapy Studied Through Magnetic Resonance:

- What Have We Learned, and Where Do We Go? *Biol Psychiatry*, 91(6), 540-549.
doi:10.1016/j.biopsych.2021.05.023
- Ownby, R. L., Crocco, E., Acevedo, A., John, V., & Loewenstein, D. (2006). Depression and risk for Alzheimer disease: systematic review, meta-analysis, and metaregression analysis. *Arch Gen Psychiatry*, 63(5), 530-538. doi:10.1001/archpsyc.63.5.530
- Papakostas, G. I. (2008). Tolerability of modern antidepressants. *J Clin Psychiatry*, 69 Suppl E1, 8-13. Retrieved from <https://www.ncbi.nlm.nih.gov/pubmed/18494538>
- Pariante, C. M. (2017). Why are depressed patients inflamed? A reflection on 20 years of research on depression, glucocorticoid resistance and inflammation. *Eur Neuropsychopharmacol*, 27(6), 554-559. doi:10.1016/j.euroneuro.2017.04.001
- Penner-Goeke, S., & Binder, E. B. (2019). Epigenetics and depression. *Dialogues Clin Neurosci*, 21(4), 397-405. doi:10.31887/DCNS.2019.21.4/ebinder
- Petralia, M. C., Mazzon, E., Fagone, P., Basile, M. S., Lenzo, V., Quattropiani, M. C., . . . Nicoletti, F. (2020). The cytokine network in the pathogenesis of major depressive disorder. Close to translation? *Autoimmun Rev*, 19(5), 102504. doi:10.1016/j.autrev.2020.102504
- Powell, T. R., Smith, R. G., Hackinger, S., Schalkwyk, L. C., Uher, R., McGuffin, P., . . . Tansey, K. E. (2013). DNA methylation in interleukin-11 predicts clinical response to antidepressants in GENDEP. *Transl Psychiatry*, 3(9), e300. doi:10.1038/tp.2013.73
- Provencal, N., Arloth, J., Cattaneo, A., Anacker, C., Cattane, N., Wiechmann, T., . . . Binder, E. B. (2020). Glucocorticoid exposure during hippocampal neurogenesis primes future stress response by inducing changes in DNA methylation. *Proc Natl Acad Sci U S A*, 117(38), 23280-23285. doi:10.1073/pnas.1820842116
- Psych, E. C., Akbarian, S., Liu, C., Knowles, J. A., Vaccarino, F. M., Farnham, P. J., . . . Sestan, N. (2015). The PsychENCODE project. *Nat Neurosci*, 18(12), 1707-1712. doi:10.1038/nn.4156
- Qiao, M., Jiang, Q. S., Liu, Y. J., Hu, X. Y., Wang, L. J., Zhou, Q. X., & Qiu, H. M. (2019). Antidepressant mechanisms of venlafaxine involving increasing histone acetylation and modulating tyrosine hydroxylase and tryptophan hydroxylase expression in hippocampus of depressive rats. *Neuroreport*, 30(4), 255-261. doi:10.1097/WNR.0000000000001191
- Ridout, K. K., Ridout, S. J., Price, L. H., Sen, S., & Tyrka, A. R. (2016). Depression and telomere length: A meta-analysis. *J Affect Disord*, 191, 237-247. doi:10.1016/j.jad.2015.11.052
- Roadmap Epigenomics, C., Kundaje, A., Meuleman, W., Ernst, J., Bilenky, M., Yen, A., . . . Kellis, M. (2015). Integrative analysis of 111 reference human epigenomes. *Nature*, 518(7539), 317-330. doi:10.1038/nature14248
- Roberts, S., Lester, K. J., Hudson, J. L., Rapee, R. M., Creswell, C., Cooper, P. J., . . . Eley, T. C. (2014). Serotonin transporter [corrected] methylation and response to cognitive behaviour therapy in children with anxiety disorders. *Transl Psychiatry*, 4(9), e444. doi:10.1038/tp.2014.83
- Rotella, F., & Mannucci, E. (2013). Depression as a risk factor for diabetes: a meta-analysis of longitudinal studies. *J Clin Psychiatry*, 74(1), 31-37. doi:10.4088/JCP.12r07922
- Roy, B., Dunbar, M., Shelton, R. C., & Dwivedi, Y. (2017). Identification of MicroRNA-124-3p as a Putative Epigenetic Signature of Major Depressive Disorder. *Neuropsychopharmacology*, 42(4), 864-875. doi:10.1038/npp.2016.175
- Rush, A. J., Fava, M., Wisniewski, S. R., Lavori, P. W., Trivedi, M. H., Sackeim, H. A., . . . Group, S. D. I. (2004). Sequenced treatment alternatives to relieve depression (STAR*D): rationale and design. *Control Clin Trials*, 25(1), 119-142. doi:10.1016/s0197-2456(03)00112-0
- Sailani, M. R., Halling, J. F., Moller, H. D., Lee, H., Plomgaard, P., Pilegaard, H., . . . Regenber, B. (2019). Lifelong physical activity is associated with promoter hypomethylation of genes involved in metabolism, myogenesis, contractile properties and oxidative stress resistance in aged human skeletal muscle. *Sci Rep*, 9(1), 3272. doi:10.1038/s41598-018-37895-8

- Schiele, M. A., Kollert, L., Lesch, K. P., Arolt, V., Zwanzger, P., Deckert, J., . . . Domschke, K. (2019). Hypermethylation of the serotonin transporter gene promoter in panic disorder-Epigenetic imprint of comorbid depression? *Eur Neuropsychopharmacol*, *29*(10), 1161-1167. doi:10.1016/j.euroneuro.2019.07.131
- Schiele, M. A., Zwanzger, P., Schwarte, K., Arolt, V., Baune, B. T., & Domschke, K. (2021). Serotonin Transporter Gene Promoter Hypomethylation as a Predictor of Antidepressant Treatment Response in Major Depression: A Replication Study. *Int J Neuropsychopharmacol*, *24*(3), 191-199. doi:10.1093/ijnp/pyaa081
- Schildkraut, J. J. (1965). The catecholamine hypothesis of affective disorders: a review of supporting evidence. *Am J Psychiatry*, *122*(5), 509-522. doi:10.1176/ajp.122.5.509
- Schurgers, G., Walter, S., Pishva, E., Guloksuz, S., Peerbooms, O., Incio, L. R., . . . Rutten, B. P. F. (2022). Longitudinal alterations in mRNA expression of the BDNF neurotrophin signaling cascade in blood correlate with changes in depression scores in patients undergoing electroconvulsive therapy. *Eur Neuropsychopharmacol*, *63*, 60-70. doi:10.1016/j.euroneuro.2022.07.183
- Shadrina, M., Bondarenko, E. A., & Slominsky, P. A. (2018). Genetics Factors in Major Depression Disease. *Front Psychiatry*, *9*, 334. doi:10.3389/fpsy.2018.00334
- Shen, T., Li, X., Chen, L., Chen, Z., Tan, T., Hua, T., . . . Xu, Z. (2020). The relationship of tryptophan hydroxylase-2 methylation to early-life stress and its impact on short-term antidepressant treatment response. *J Affect Disord*, *276*, 850-858. doi:10.1016/j.jad.2020.07.111
- Sirignano, L., Frank, J., Kranaster, L., Witt, S. H., Streit, F., Zillich, L., . . . Foo, J. C. (2021). Methylome-wide change associated with response to electroconvulsive therapy in depressed patients. *Transl Psychiatry*, *11*(1), 347. doi:10.1038/s41398-021-01474-9
- Souery, D., Oswald, P., Massat, I., Bailer, U., Bollen, J., Demyttenaere, K., . . . Group for the Study of Resistant, D. (2007). Clinical factors associated with treatment resistance in major depressive disorder: results from a European multicenter study. *J Clin Psychiatry*, *68*(7), 1062-1070. doi:10.4088/jcp.v68n0713
- Surtees, P. G., Wainwright, N. W., Luben, R. N., Wareham, N. J., Bingham, S. A., & Khaw, K. T. (2008). Depression and ischemic heart disease mortality: evidence from the EPIC-Norfolk United Kingdom prospective cohort study. *Am J Psychiatry*, *165*(4), 515-523. doi:10.1176/appi.ajp.2007.07061018
- Tadic, A., Muller-Engling, L., Schlicht, K. F., Kotsiari, A., Dreimuller, N., Kleimann, A., . . . Frieling, H. (2014). Methylation of the promoter of brain-derived neurotrophic factor exon IV and antidepressant response in major depression. *Mol Psychiatry*, *19*(3), 281-283. doi:10.1038/mp.2013.58
- Takeuchi, N., Nonen, S., Kato, M., Wakeno, M., Takekita, Y., Kinoshita, T., & Kugawa, F. (2017). Therapeutic Response to Paroxetine in Major Depressive Disorder Predicted by DNA Methylation. *Neuropsychobiology*, *75*(2), 81-88. doi:10.1159/000480512
- Tayyab, M., Shahi, M. H., Farheen, S., Mariyath, M. P. M., Khanam, N., Castresana, J. S., & Hossain, M. M. (2018). Sonic hedgehog, Wnt, and brain-derived neurotrophic factor cell signaling pathway crosstalk: potential therapy for depression. *J Neurosci Res*, *96*(1), 53-62. doi:10.1002/jnr.24104
- Thomas, L., Kessler, D., Campbell, J., Morrison, J., Peters, T. J., Williams, C., . . . Wiles, N. (2013). Prevalence of treatment-resistant depression in primary care: cross-sectional data. *Br J Gen Pract*, *63*(617), e852-858. doi:10.3399/bjgp13X675430
- Tiger, M., Varnas, K., Okubo, Y., & Lundberg, J. (2018). The 5-HT(1B) receptor - a potential target for antidepressant treatment. *Psychopharmacology (Berl)*, *235*(5), 1317-1334. doi:10.1007/s00213-018-4872-1
- Tong, J., Meyer, J. H., Furukawa, Y., Boileau, I., Chang, L. J., Wilson, A. A., . . . Kish, S. J. (2013). Distribution of monoamine oxidase proteins in human brain: implications for brain imaging studies. *J Cereb Blood Flow Metab*, *33*(6), 863-871. doi:10.1038/jcbfm.2013.19

- Trivedi, M. H., Rush, A. J., Wisniewski, S. R., Nierenberg, A. A., Warden, D., Ritz, L., . . . Team, S. D. S. (2006). Evaluation of outcomes with citalopram for depression using measurement-based care in STAR*D: implications for clinical practice. *Am J Psychiatry*, *163*(1), 28-40. doi:10.1176/appi.ajp.163.1.28
- Tsai, P. C., & Bell, J. T. (2015). Power and sample size estimation for epigenome-wide association scans to detect differential DNA methylation. *Int J Epidemiol*, *44*(4), 1429-1441. doi:10.1093/ije/dyv041
- Tsai, S. J., Hong, C. J., Liou, Y. J., Yu, Y. W., Chen, T. J., Hou, S. J., & Yen, F. C. (2009). Tryptophan hydroxylase 2 gene is associated with major depression and antidepressant treatment response. *Prog Neuropsychopharmacol Biol Psychiatry*, *33*(4), 637-641. doi:10.1016/j.pnpbp.2009.02.020
- Undurraga, J., & Baldessarini, R. J. (2012). Randomized, placebo-controlled trials of antidepressants for acute major depression: thirty-year meta-analytic review. *Neuropsychopharmacology*, *37*(4), 851-864. doi:10.1038/npp.2011.306
- van den Oord, C., Copeland, W. E., Zhao, M., Xie, L. Y., Aberg, K. A., & van den Oord, E. (2022). DNA methylation signatures of childhood trauma predict psychiatric disorders and other adverse outcomes 17 years after exposure. *Mol Psychiatry*, *27*(8), 3367-3373. doi:10.1038/s41380-022-01597-5
- van der Knaap, L. J., Riese, H., Hudziak, J. J., Verbiest, M. M., Verhulst, F. C., Oldehinkel, A. J., & van Oort, F. V. (2014). Glucocorticoid receptor gene (NR3C1) methylation following stressful events between birth and adolescence. The TRAILS study. *Transl Psychiatry*, *4*(4), e381. doi:10.1038/tp.2014.22
- Vancampfort, D., Mitchell, A. J., De Hert, M., Sienaert, P., Probst, M., Buys, R., & Stubbs, B. (2015). Type 2 Diabetes in Patients with Major Depressive Disorder: A Meta-Analysis of Prevalence Estimates and Predictors. *Depress Anxiety*, *32*(10), 763-773. doi:10.1002/da.22387
- Walther, D. J., Peter, J. U., Bashammakh, S., Hortnagl, H., Voits, M., Fink, H., & Bader, M. (2003). Synthesis of serotonin by a second tryptophan hydroxylase isoform. *Science*, *299*(5603), 76. doi:10.1126/science.1078197
- Wang, P., Lv, Q., Mao, Y., Zhang, C., Bao, C., Sun, H., . . . Fang, Y. (2018). HTR1A/1B DNA methylation may predict escitalopram treatment response in depressed Chinese Han patients. *J Affect Disord*, *228*, 222-228. doi:10.1016/j.jad.2017.12.010
- Wang, P., Zhang, C., Lv, Q., Bao, C., Sun, H., Ma, G., . . . Cai, W. (2018). Association of DNA methylation in BDNF with escitalopram treatment response in depressed Chinese Han patients. *Eur J Clin Pharmacol*, *74*(8), 1011-1020. doi:10.1007/s00228-018-2463-z
- Warden, D., Rush, A. J., Trivedi, M. H., Fava, M., & Wisniewski, S. R. (2007). The STAR*D Project results: a comprehensive review of findings. *Curr Psychiatry Rep*, *9*(6), 449-459. doi:10.1007/s11920-007-0061-3
- Weaver, I. C., Meaney, M. J., & Szyf, M. (2006). Maternal care effects on the hippocampal transcriptome and anxiety-mediated behaviors in the offspring that are reversible in adulthood. *Proc Natl Acad Sci U S A*, *103*(9), 3480-3485. doi:10.1073/pnas.0507526103
- Wittenberg, G. M., Stylianou, A., Zhang, Y., Sun, Y., Gupta, A., Jagannatha, P. S., . . . Drevets, W. C. (2020). Effects of immunomodulatory drugs on depressive symptoms: A mega-analysis of randomized, placebo-controlled clinical trials in inflammatory disorders. *Mol Psychiatry*, *25*(6), 1275-1285. doi:10.1038/s41380-019-0471-8
- Wong, C. C., Caspi, A., Williams, B., Craig, I. W., Houts, R., Ambler, A., . . . Mill, J. (2010). A longitudinal study of epigenetic variation in twins. *Epigenetics*, *5*(6), 516-526. doi:10.4161/epi.5.6.12226
- Xu, Z., Chen, Z., Shen, T., Chen, L., Tan, T., Gao, C., . . . Zhang, Z. (2022). The impact of HTR1A and HTR1B methylation combined with stress/genotype on early antidepressant efficacy. *Psychiatry Clin Neurosci*, *76*(2), 51-57. doi:10.1111/pcn.13314

Yeung, A. W. K., Georgieva, M. G., Atanasov, A. G., & Tzvetkov, N. T. (2019). Monoamine Oxidases (MAOs) as Privileged Molecular Targets in Neuroscience: Research Literature Analysis. *Front Mol Neurosci*, 12, 143. doi:10.3389/fnmol.2019.00143

Zhang, Y., Chang, Z., Chen, J., Ling, Y., Liu, X., Feng, Z., . . . Zhang, C. (2015). Methylation of the tryptophan hydroxylase-2 gene is associated with mRNA expression in patients with major depression with suicide attempts. *Mol Med Rep*, 12(2), 3184-3190. doi:10.3892/mmr.2015.3748

Tables

Table 1. Overview of studies characterizing DNA methylation profiles associated with treatment response in Major depressive disorder.

Author & Date	Sample	Antidepressant Treatment	Treatment Duration and Outcome Measure	Genomic Loci Assessed	Tissue Examined	Method to assess Methylation	Direction of Effect in Relation to Treatment Response
Domschke et al. (2014)	94 MDD (females n=61, males n=33), European ancestry	Various antidepressants/Escitalopram only subsample (n= 61)	6 weeks, HAM-D% change	9 CpGs of <i>SLC6A4</i> exon 1A	Peripheral Blood	Targeted direct bisulfite sequencing (measured at baseline)	↓meth average ↓response mainly conferred by CpG 2 (Bonferroni corrected)
Domschke et al. (2015)	94 MDD (females n=61, males n=33), European ancestry	Various antidepressants/ Escitalopram - only subsample (n=61)	6 weeks, HAM-D% change	43 CpGs in <i>MAO-A</i>	Peripheral Blood	Targeted direct bisulfite sequencing (measured at baseline)	trend for ↓meth in two CpGs ↓response in females (nominally significant)
Dragonov et al. (2019)	155 MDD (females n=105, males n=48), European ancestry	Various antidepressants	4 weeks, Response = MSM ≤7	5 CpG sites of <i>IL6</i> , 6 sites of <i>IL1-β</i> and 2 of <i>IL6R</i>	Peripheral Blood	Bisulfite-pyrosequencing (measured at baseline)	↑meth <i>IL6R</i> CpG ↑response (nominally significant)
Engelmann et al. (2022)	80 MDD (female n=46, males n=34), European ancestry	Escitalopram, venlafaxine, lithium	4 weeks, HAM-D% change	EWAS/ Genome-scale	Whole blood	Illumina EPIC BeadChip (measured at baseline)	No epigenome-scale significant differentially methylated positions, 18 ↑meth DMRs, 2 ↓meth DMRs; strongest in <i>SORBS2</i> , <i>CYP2C18</i> ↑response (Šidák corrected)
Gao et al. (2022)	98 MDD (female n=55, male n=43), Asian ancestry	Various antidepressants	2 weeks, HAM-D% change	181 CpGs sites of <i>HTR1A</i> and <i>HTR1B</i> .	Peripheral Blood	Bisulfite Amplicon Sequencing (measured at baseline)	↓meth <i>HTR1A</i> CpG 208 & <i>HTR1B</i> CpG 65 ↓response (nominally significant)

Gasso et al. (2017)	57 MDD, (no sex breakdown of participants in MDD cohort) adolescents between 10-17 years, European ancestry	Fluoxetine, medication with antipsychotics & (or) benzodiazepines or mood stabilizers	12 weeks, CDI change	7 CpG sites in <i>HTR1B</i> promoter	Peripheral Blood	Bisulfite-pyrosequencing (measured at baseline)	↓meth <i>HTR1B</i> promoter ↑response (nominally significant)
Hsieh et al. (2019)	51 MDD, 62 controls (female n=25 male n=25 in case and controls), Asian ancestry	Various antidepressants & benzodiazepines	4 weeks, HAM-D% change	14 CpG sites in <i>BDNF</i> exon IX	Peripheral Blood	Bisulfite-pyrosequencing (measured at baseline)	↑meth <i>BDNF</i> CpG 24 & CpG 324 ↑response (nominally significant)
Iga et al. (2016)	28 MDD, (female n=20, male n=8), Asian ancestry	Various antidepressants	8 weeks, HAM-D% change	9 CpG sites in <i>SLC6A4</i> promoter	Peripheral Blood	Bisulfite-pyrosequencing (measured at baseline & completion of treatment)	trend for ↓meth <i>SLC6A4</i> CpG 2 ↑response (Bonferroni corrected)
Ju et al. (2019)	177 MDD (female n=110 male, n=67), Majority of European ancestry	Escitalopram	8 weeks, MADRS% change	EWAS/ Genome-scale	Peripheral Blood	Infinium Methylation EPIC Beadchip (measured at baseline)	↓meth two DMP in <i>CHN2</i> and one in DMP in <i>JAK2</i> ↑response, one DMP in <i>CHN2</i> replicated in an external cohort
Kang et al. (2013)	108 MDD (female n=75 male, n=33), Asian ancestry	Various antidepressants	12 weeks, HAM-D% change	7 CpGs in <i>SLC6A4</i> promoter	Peripheral Blood	Bisulfite-pyrosequencing (measured at baseline)	trend for ↑meth CpG 2 ↓response (nominally significant)
Kleimann et al. (2015)	11 patients (female n=5, male n=6), European ancestry	ECT	3.5 weeks, MADRS% change, BDI-II change	<i>BDNF</i> promoter I, IV, and VI CpGs	Peripheral Blood	Bisulfite-pyrosequencing (measured at baseline, throughout & after treatment)	↓meth <i>BDNF</i> exon I promoter ↑response (nominally significant)
Kim et al. (2015)	127 MDD & acute coronary syndrome (no sex breakdown of participants in MDD)	Escitalopram	24-weeks, HAM-D% change	9 CpGs sites in <i>BDNF</i> exon VI	Peripheral Blood leukocytes	Bisulfite-pyrosequencing (measured at baseline & completion of treatment)	↑meth one <i>BDNF</i> CpG & average ↓response

	cohort), Asian ancestry						
Li et al. (2021)	291 MDD (female n=189, male n=102), Asian ancestry	Various antidepressants (SSRIs, SNRIs, NaSSAs, SARIs)	6 weeks, HAM-D% change	194 CpG sites spanning six CpG Islands of <i>BDNF</i>	Peripheral Blood	Targeted NGS-based methylation analysis (measured at baseline)	↑meth <i>BDNF</i> CpG 140 ↑response (FDR corrected)
Lieb et al. (2018)	561 MDD (female n=315, male n=246) [199 Severe MDD HAM-17 scores ≥ 25 (female n=118, male n=81), European ancestry	Escitalopram for 2 weeks, venlafaxine in non-responders, lithium added after 28 days in non-responders	8 weeks, HAM-D% change	<i>BDNF</i> Exon IV promoter and <i>p11</i> promoter	Peripheral Blood	Targeted direct bisulfite sequencing (measured at baseline)	↑meth <i>BDNF</i> CpG-87 in patients with severe MDD ↑response (uncorrected for multiple testing)
Maier et al. (2023)	31 MDD (female n=20, male n=11), European ancestry	ECT	3-4 weeks, BDI-II and MADRS% change	43 CpG Sites in <i>NR3C1</i> and 28 CpG Sites in <i>POMC</i>	PBMCs	Sanger sequencing of bisulfite-converted DNA Bisulfite-pyrosequencing (measured at baseline, throughout & after treatment)	↓meth <i>NR3C1</i> ↑response (nominally significant)
Martinez-Pinteño et al. (2021)	22 MDD (female n=19, male n=3), children and adolescents between 13-17 years, European ancestry	Fluoxetine	8 weeks, CDI%- & CGI-I% change	EWAS/ Genome-scale	Peripheral Blood	Illumina Infinium Methylation EPIC BeadChip (measured at baseline)	↑meth CpG sites <i>RHOJ</i> & ↓meth <i>OR2L13</i> ↓response (FDR corrected)
Moon et al. (2022)	221 MDD (female n=173, male n=48), Asian ancestry	Various SSRIs (Escitalopram, Fluoxetine, Paroxetine, Sertraline)	6 weeks, HAM-D% change	Nine CpG sites in the promoter region of <i>SLC6A4</i>	Peripheral blood	Bisulfite-pyrosequencing (measured at baseline & completion of treatment)	No DMPs identified ↑meth CpG4, ↓meth CpG3 & CpG5 observed after treatment completion (nominally significant)

Moschny et al. (2020)a	87 MDD (female n=45, male n=42), European ancestry	ECT	HAM-D% Change, MADRS% change	39 CpG sites in <i>t-PA</i> and 35 CpGs in <i>PAI-1</i>	PBMCs	Sanger sequencing of bisulfite-converted DNA (measured at baseline, throughout & after treatment)	No differences in baseline <i>t-PA</i> or <i>PAI-1</i> meth (Šidák corrected)
Moschny et al. (2020)b	17 MDD (female n=10, male n=7), European ancestry	ECT	4 weeks, BDI-II and MADRS% change	EWAS/ Genome-scale	PBMCs	Illumina NextSeq 550 (measured at baseline & completion of treatment)	↓meth <i>RNF175</i> , ↑meth <i>RNF213</i> , ↓meth <i>TBC1D14</i> , 550 ↑meth <i>TMC5</i> , ↑meth <i>WSCD1</i> , ↓meth <i>AC018685.2</i> , ↓meth <i>AC098617.1</i> , ↑meth <i>CLCN3P1</i> ↑ response
Okada et al. (2014)	50 MDD 50 controls (female n=25, male n=25 in case and controls), Asian Ancestry	Paroxetine, fluvoxamine, milnacipran	6 weeks, HAM-D% change	81 CpGs in <i>SLC6A4</i> promoter	Peripheral Blood	Targeted methylation array (measured at baseline & completion of treatment)	↑meth <i>SLC6A4</i> CpG 3 ↑response (Bonferroni corrected)
Powell et al. (2013)	113 MDD (female n=67, male n=46), European ancestry	80 Escitalopram, 33 Nortriptyline	12 weeks, MADRS% change	CpG island of <i>interleukin-11</i> loci.	Peripheral Blood	Targeted methylation assessment (measured at baseline)	↓meth CpG 5 ↑ response ↑meth CpG4 ↑response ↑meth CpG 11 x rs1126757 GG ↑response (FDR corrected)
Sirignano et al. (2021)	34 MDD (female n=16, male n=18), European ancestry	ECT	HAM-D% change	EWAS/ Genome-scale & 799 candidate gene CpGs	Peripheral Blood	Illumina Infinium Methylation EPIC array (measured at baseline & completion of treatment)	↑meth <i>FKBP5</i> CpG at follow-up ↑response in continuous response model (FDR corrected) No differences in baseline meth after correction for multiple comparisons)
Schiele et al. (2021)	236 MDD (female n=138, male n= 98) European ancestry	Various antidepressants	6 weeks, HAM-D% change	9 CpG sites located in the <i>SLC6A4</i> promoter region	Blood cells	Direct sequencing of sodium bisulfite-treated DNA (measured at baseline)	↓meth CpG ↓response, similar trend in longitudinal replication cohort (n=110) (nominally significant)
Shen et al. (2020)	291 MDD (female n=187, male n=104) 1000 healthy controls,	Various antidepressants	HAM-D% Change, 2 weeks	38 CpG sites of <i>TPH2</i>	Peripheral blood	NGS-based multiple Targeted CpG methylation analysis method	↑meth 2 CpGs in male & ↑meth 1 CpG in female ↓response (uncorrected for multiple testing) ↑meth 2 CpGs x ↑ early life stress ↓response (FDR corrected)

	Asian ancestry					(measured at baseline)	
Tadic et al. (2014)	39 MDD, (female n=22, male n=17) European ancestry	Fluoxetine, Venflaxine, TCAs	6 weeks, HAM-D% change	12 CpG sites of <i>BDNF</i> exon IV promoter	PBMCs	Direct sequencing of sodium bisulfite-treated DNA	↓meth CpG 87 at baseline ↓response
Takeuchi et al. (2018)	20 MDD (female n=11, male n=9), Asian ancestry	Paroxetine	6 weeks, HAM-D% change	EWAS/ Genome-scale	Peripheral Blood	Infinium HumanMethylation450 BeadChip (measured at baseline)	↑meth <i>PPFIA4</i> CpG cg00594917 ↑meth <i>HS3ST1</i> CPG cg07260927 ↓response (FDR corrected)
Wang et al. (2018)a	85 MDD (female n=56, male n=29), Asian ancestry	Escitalopram & low dose of benzodiazepines	8 weeks, HAM-D% change	96 CpG sites in <i>HTR1A</i> & <i>HTR1B</i> promoter	Peripheral blood	Bisulfite Amplicon Sequencing (measured at baseline & completion of treatment)	↓meth <i>HTR1A1</i> CpG 668 & <i>HTR1B1</i> CpG 1401 ↓response ↑meth <i>HTR1A1</i> CpG 668 x Life Events Scale score ↓response (FDR corrected)
Wang et al. (2018)b	85 MDD (female n=56, male n=29), 44 longitudinal, Asian ancestry	Escitalopram & low dose of benzodiazepines	8 weeks, HAM-D% change	90 CpG sites in <i>BDNF</i>	Peripheral blood	Bisulfite Amplicon Sequencing (measured at baseline & completion of treatment)	↑meth <i>BDNF</i> at four amplicons in <i>BDNF</i> ↑response ↓average meth <i>BDNF</i> ↓response ↓Stressful life events x ↑meth ↑response (FDR corrected)
Wang et al. (2022)	291 MDD patients (female n=189, male n=102) & 100 controls (female n=64, male n=36), Asian ancestry	Various Antidepressants (SSRI-group & non-SSRI-group)	2 weeks, HAM-D% change	74 CpG sites of <i>P11</i>	Peripheral blood	Bisulfite Amplicon Sequencing (measured at baseline)	↑meth <i>P11-3-185</i> x early life stress ↓response (FDR corrected)
Xu et al. (2022)a	291 MDD patients (female n=189, male n=102) & 100 controls (female n=64, male n=36), Asian ancestry	Various Antidepressants (SSRI-group & non-SSRI-group)	2 weeks, HAM-D% change	181 CpGs sites of <i>HTR1A</i> and <i>HTR1B</i> .	Peripheral blood	Bisulfite Amplicon Sequencing (measured at baseline)	↓meth <i>HTR1A-2</i> CpG 143 + low CTQ score ↑response ↑meth <i>HTR1B</i> CpG 3-61 x <i>rs6298</i> AA/AG genotype ↑response
Xu et al. (2022)b	87 MDD (female n=72, male n=15) & 53 controls (female	Various Antidepressants	6 weeks, BDI-II ≤ 10	3 CpGs of <i>RPS6KA5</i>	Peripheral blood	Bisulfite-pyrosequencing (measured at baseline)	↑average meth ↑response (Benjamini-Hochberg adjusted)

	n=39 male n=14) Asian ancestry						
--	--------------------------------------	--	--	--	--	--	--

Notes and abbreviations

MDD = Major Depressive Disorder

DNAm = DNA Methylation; PBMCs = Peripheral blood mononuclear cells

CpG site/CpGs = regions of DNA where a cytosine nucleotide is followed by a guanine nucleotide in the linear sequence of bases along its 5' → 3' direction

DMP = Differentially methylated position; DMR = Genomic regions with different DNA methylation status across different samples

SSRIs = Selective serotonin reuptake inhibitors; SNRIs = Serotonin–norepinephrine reuptake inhibitors; TCAs = Tricyclic antidepressants; NaSSAs = Noradrenergic and specific serotonergic antidepressants, SARIs = Serotonin antagonist and reuptake inhibitors; ECT = Electroconvulsive therapy

↑meth = hypermethylation, ↓meth = hypomethylation,

↑response = treatment responders, ↓response = treatment non-responders

HAM-D = Hamilton Rating Scale for Depression, CES-D = Center for Epidemiologic Studies

Depression, CDI = Children's Depression Inventory, CGI-S = Clinical Global Impression-

Severity scale, GAF = Global Assessment of Functioning Scale, CGAS = Children's global

Assessment Scale, MADRS = Montgomery Åsberg Depression Rating Scale, BDI-II = Beck's

Depression Inventory, CTQ = Childhood Trauma Questionnaire, MSM = Maudsley Staging Met

Figures

Figure 1. Schematic representation of opportunities for pharmaco-epigenetic approaches in MDD treatment.

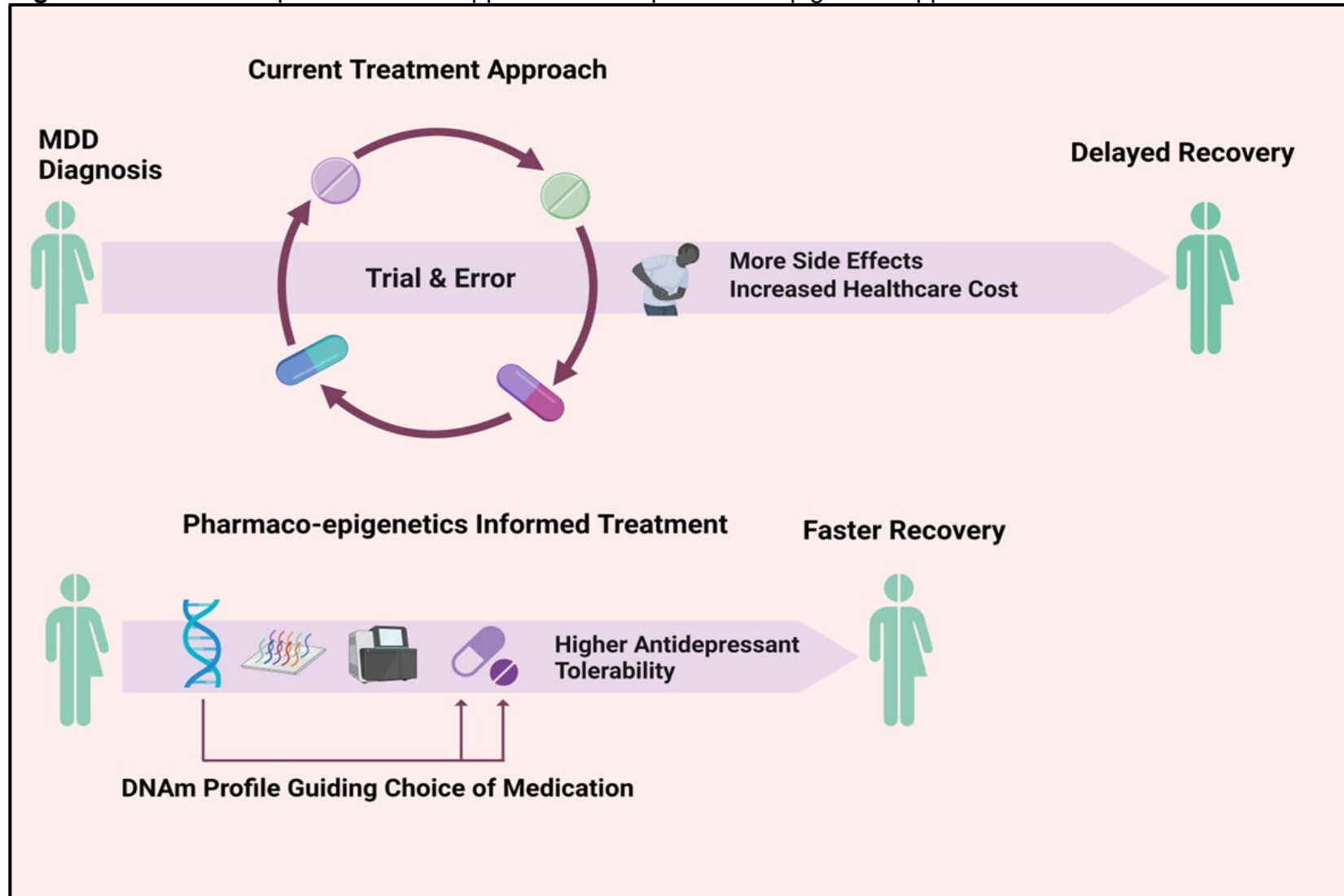


Figure 2. Literature search diagram showing the filtering and article selection process

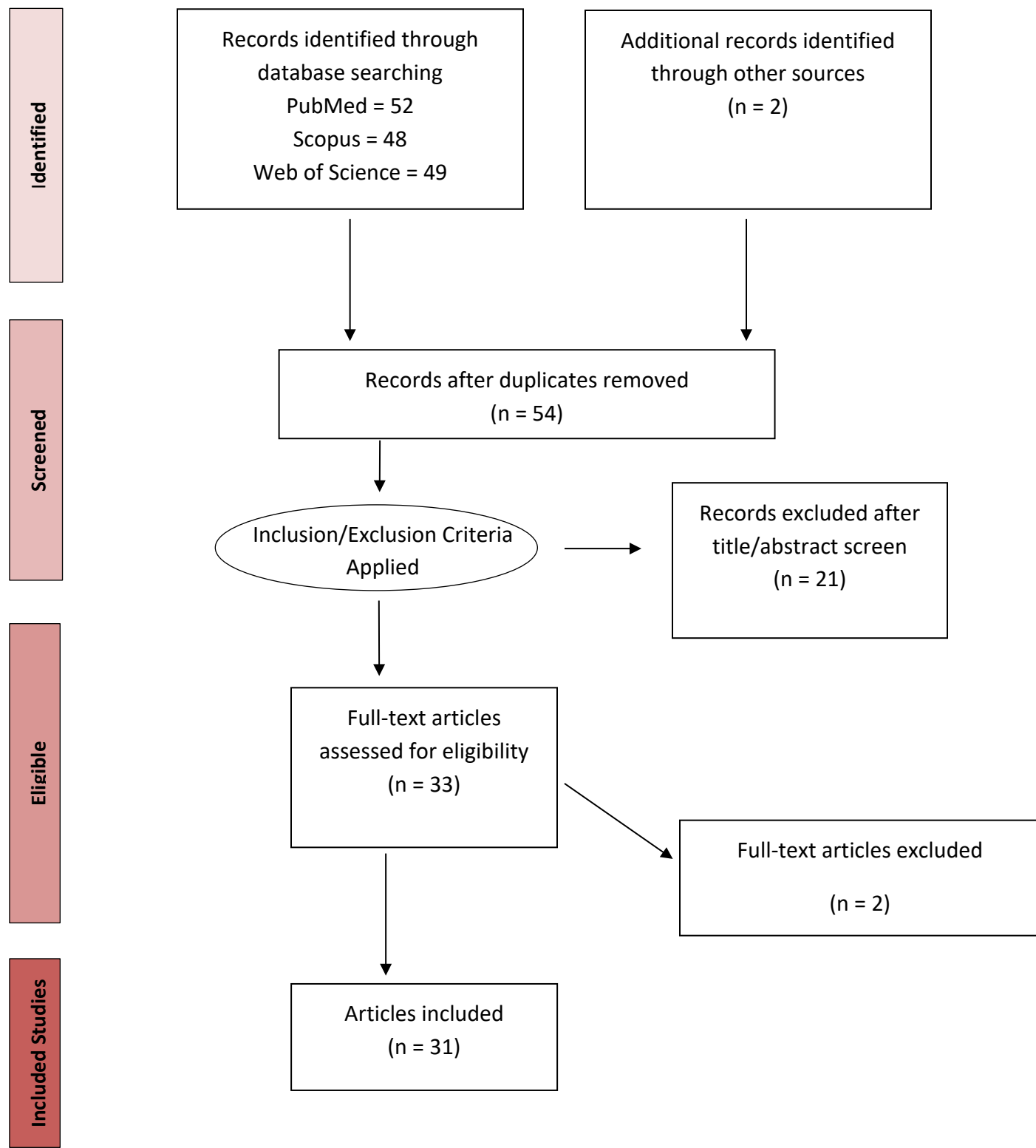


Figure 3. Increase of studies investigating DNAm signatures in MDD associated with a treatment response over the last decade

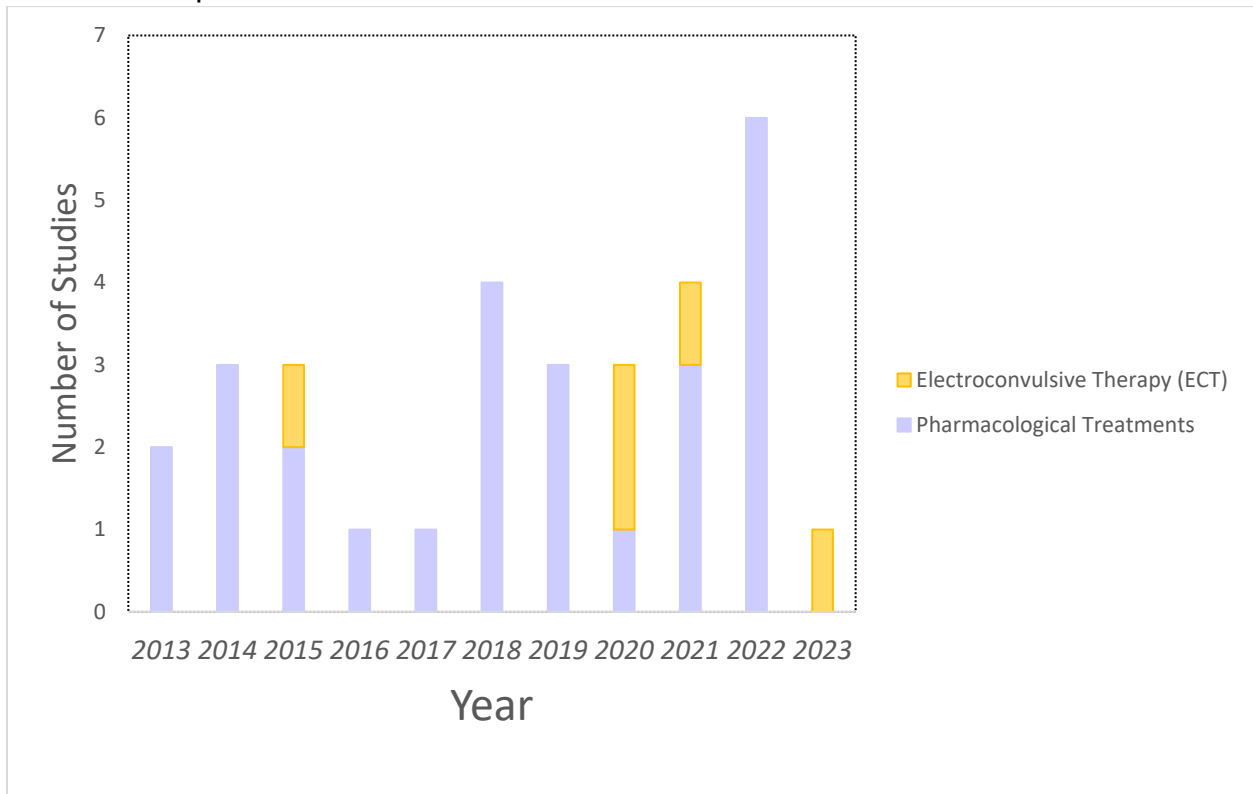


Figure 4. Pathways of Significance in Pharmaco-epigenetic Studies of MDD Treatment Response and Opportunities for Future Efforts.

