

## Divergent trends in the incidence and mortality of coronary events, especially in women. Evidence from Finland in 1996-2021.

*Atte Kallström<sup>1</sup>, Ida Holopainen<sup>2</sup>, Oleg Kambur<sup>2</sup>, Markus Perola<sup>2,3</sup>, Veikko Salomaa<sup>2</sup>, Aki S. Havulinna<sup>2,4</sup>, Markus Ramste<sup>1\*</sup>, Juha Sinisalo<sup>1\*</sup>*

### Affiliations:

1. *Heart and Lung Center, Helsinki University Hospital, University of Helsinki, Helsinki, Finland*
2. *Finnish Institute for Health and Welfare (THL), Helsinki, Finland.*
3. *Clinical and Molecular Metabolism Research Program, Faculty of Medicine, University of Helsinki, Helsinki, Finland*
4. *Institute for Molecular Medicine Finland, FIMM-HiLIFE, Helsinki, Finland*

*\*Equal contribution*

### *& Correspondence:*

*Juha Sinisalo  
Heart and Lung Center, Helsinki University Hospital,  
University of Helsinki, Helsinki, Finland  
Phone: +35894711*

1 **Abstract:**  
2

3 **Objective:** Acute coronary syndrome (ACS) incidence and case fatality (CF) have declined in the  
4 past decades, but some studies have suggested a potential stagnation in this decline. We examined  
5 how the ACS burden has evolved among persons aged 35-74 in Finland from 1996 to 2021.

6 **Methods:** We used Finnish country-wide Hospital Discharge- and Causes of Death- Registers  
7 covering first non-fatal and fatal ACS events, totaling 69 906 442 person-years at risk. We analyzed  
8 incidence, mortality, and 28-day CF, and their trends using negative binomial, Poisson, segmented,  
9 and logistic regression adjusting for age and sex.

10 **Results:** Altogether, the analysis consisted of 186 489 non-fatal and 72 907 fatal ACS events. ACS  
11 incidence declined in men (annual percentage change (APC) -2.0% [95% CI -2.2 to -1.8]) and in older  
12 women (APC of 55-64 year old -1.5% [-1.7 to -1.2] and 65-74 year old -3.3% [-3.4 to -3.2]), but the  
13 incidence decline slowed down over the last decade. In younger women aged 35-54, incidence was  
14 unchanged during the study period. ACS mortality and CF declined (APC of the mortality in men -  
15 4.4% [-4.6 to -4.2] and in women -5.0% [-5.2 to -4.7]. APC of CF in men -2.7% [-2.8 to -2.6] and in  
16 women -3.3% [-3.6 to -3.1]).

17 **Conclusions:** ACS mortality declined in all groups, but the decline in ACS incidence slowed down  
18 and even halted in women. In women aged 35-54, the incidence was unchanged during the study  
19 period. These results emphasize the need of intensified cardiovascular prevention, particularly in  
20 women.

21  
22  
23  
24  
25  
26  
27  
28  
29

30 **Key words**

31 epidemiology, acute coronary syndrome, incidence, mortality, women  
32

33 **Key messages**  
34

- 35 • **What is already known on this topic** – *During the last decades coronary artery disease*  
36 *treatment and prevention have improved worldwide which has led to a decline in ACS*  
37 *mortality and case fatality. However, recent studies from several countries suggest, that*  
38 *incidence decline has stagnated or even turned to increase, especially in younger age cohorts.*
- 39 • **What this study adds** – *This study showed that incidence has ceased its decline in women*  
40 *aged 35-54 and has slowed down in older age groups. Together with declining mortality this*  
41 *results in a growing number of patients living with cardiovascular disease leading to*  
42 *increased healthcare costs.*
- 43 • **How this study might affect research, practice, or policy** – *The alarming results of this*  
44 *study underline the importance of intensifying prevention, focusing especially on young and*  
45 *middle-aged women.*  
46

## 47 **Introduction**

48

49 Cardiovascular disease is one of the world's leading causes of death and has been extensively  
50 researched <sup>1 2</sup>. Established modifiable risk factors are hypertension, dyslipidemia, diabetes mellitus,  
51 and smoking. Preventive measures that target these risk factors have been shown to be effective and  
52 have a good cost-benefit ratio <sup>3</sup>. With these measures, acute coronary syndrome (ACS) mortality rates  
53 have declined during the past decades in Western countries. Approximately one-third of total ACS  
54 mortality decline is due to an increase in survival after myocardial infarction <sup>4</sup>. Compared to earlier  
55 decades, patients now have fewer and less severe symptoms, and survival rates are higher. However,  
56 there are worrying signs that these positive trends may not be sustainable, as shown by data from the  
57 US and Australia. <sup>5 6</sup>. It has been proposed that the alarming increases in obesity and diabetes mellitus  
58 worldwide are reflected in ACS incidence <sup>5 7</sup>.

59

60 In Finland, the coronary heart disease mortality rate has drastically declined during the preceding  
61 decades. In the last century from 1960 to 1970 Finland's mortality rate from ACS was among the  
62 highest in the world. Most of the reduction is due to improving primary and secondary prevention,  
63 especially concentrating on the classical cardiovascular risk factors. <sup>8</sup> Also, a substantial part of the  
64 reduction has been gained by advances in the treatment of ACS, including percutaneous coronary  
65 intervention and new preventive medications <sup>9</sup>. Still, the northeastern part of Finland has a  
66 substantially higher burden of CHD incidence and mortality, partly due to genetic, environmental,  
67 and socioeconomic aspects <sup>8 10</sup>. Previous studies have demonstrated that the short-term case fatality  
68 and 1-year prognosis of incident MI have improved in both sexes from the mid-1990s to 2002 in  
69 Finland <sup>11</sup>.

70

71 Data on trends in ACS incidence and mortality rates, and case fatality during the last years is very  
72 sparse all over the world as well as in Finland <sup>8 12</sup>. As the Finnish electronic health care registries  
73 offer reliable and comprehensive nationwide data and a long follow-up period <sup>13</sup>, we chose to analyze  
74 the trends using these registries and compare our findings with available corresponding data from  
75 other Western countries. We focused on ACS trends in the 35-74 year old population of Finland from  
76 1996 to 2021. We hypothesized that these trends would be declining since ACS mortality in the  
77 Western world has declined in the past and it was previously projected that age-adjusted ACS event  
78 rates would decrease in Finland until 2050 <sup>14</sup>.

79

## 80 **Methods**

81

### 82 **Study population**

83 We collected data from Finnish country-wide registers, i.e., hospital discharges, from the Care  
84 Register for Health Care and the National Causes of Death Register with complete coverage of non-  
85 fatal and fatal ACS events, including sudden, out-of-hospital cardiac deaths. A unique personal  
86 identification number that every permanent resident in Finland receives at birth or upon immigration  
87 links the data between the registries. Altogether, the analysis consists of 186 489 non-fatal and 72  
88 907 fatal incident ACS events.

89

90 We defined annual population as the population on the last day of each year, available from the  
91 Finnish Population Information System. At the end of 2021, the population of Finland aged 35-74  
92 was 2.8 million. The study population contributed 69 906 442 person-years at risk.

93

94 The information permit number for the use of the Finnish Cardiovascular Disease Register (CVDR)  
95 is THL/3624/6.02.00/2023. Permission to access the original data can be applied for through  
96 FINDATA.

97 **Definition of ACS events**

98 The data contains only the first non-fatal and fatal ACS events, as previously classified in the WHO-  
99 MONICA project <sup>15</sup>. We defined the event as first (i.e., incident) for an individual if he/she had no  
100 previous ACS events recorded in the HDR during the preceding 10 years. If a patient had a second  
101 ACS event less than 28 days from the onset of the previous event, we considered two events as one  
102 and considered only the more severe diagnosis code. We defined an ACS event fatal if the patients  
103 died within 28 days from the onset of the event and CF as the proportion of fatal cases of all incident  
104 cases.

105  
106 Total ACS events include non-fatal hospitalizations for MI or unstable angina (ICD-9: 410; ICD-10:  
107 I20.0, I21-I22), and fatal events, which include deaths with CHD (ICD-9: 410-414; ICD-10: I20-I25),  
108 cardiac arrest (ICD-10: I46), sudden death for unknown reason (Finnish ICD-9: 798, not 7980A; ICD-  
109 10: R96), or unwitnessed death (ICD-10: R98) as the underlying or direct cause of death, or deaths  
110 with MI (ICD-9: 410; ICD-10: I21-I22) as the contributing cause of death.

111  
112 We assessed ACS incidence, mortality, and case fatality for the entire population of Finland by event  
113 age, and by event year and sex. Experimental setup is shown as flowchart in Supplemental Figure 2.

114  
115 **Age groups**

116 We calculated ACS incidence, mortality, and case fatality for the age group 35-74 and further  
117 subdivided into smaller age groups as follows 35-44, 45-54, 55-64, and 65-74. CF was an exception  
118 since the two youngest age groups were combined into one 35-54 age group to lower the random  
119 variation due to low case counts.

120  
121 **Statistics**

122 We analyzed the incidence and mortality rates, as well as the significance of their trends using Poisson  
123 or negative binomial (NB) regression models adjusting for age and sex. We used NB models instead  
124 of the Poisson model if there was evidence of overdispersion, and the NB model had a better fit for  
125 the given data. We analyzed case fatality trends using the logistic regression model.

126  
127 We used the segmented regression model to analyze the ACS incidence, mortality, and CF trend  
128 changes during the study period.

129  
130 We performed age-standardization of the incidence and mortality rates using the direct method with  
131 weights from the 2011-2030 European standard population<sup>16</sup>. This standard population allows further  
132 comparison with other publications. The weights used for age-standardizing case fatality are based  
133 on the age distribution of observed coronary events in MONICA populations in the WHO-MONICA  
134 project <sup>15</sup>. However, these weights were not defined for older age groups, thus we used weights aimed  
135 at a larger age distribution and smaller age groups (Supplemental Table 2).

136  
137 The ACS incidence and mortality rates as well as case-fatality trends are presented in the figures as  
138 three-year moving averages, the first and the last years are counted as two-year averages.

139  
140 We used R version 4.2.2 for all statistical analyses and considered  $p < 0.05$  as statistically significant.  
141 All tests were two-tailed. We used package “MASS” (version 7.3-58.1) for negative binomial  
142 regression, “segmented” (version 1.6-2) for segmented regression, and “AER” (version 1.2-10) for  
143 testing whether there was overdispersion in Poisson models. <sup>17</sup> The code used for the data analysis is  
144 available upon reasonable request.

145  
146  
147

148 **Results**

149

150 **Overall incidence and mortality**

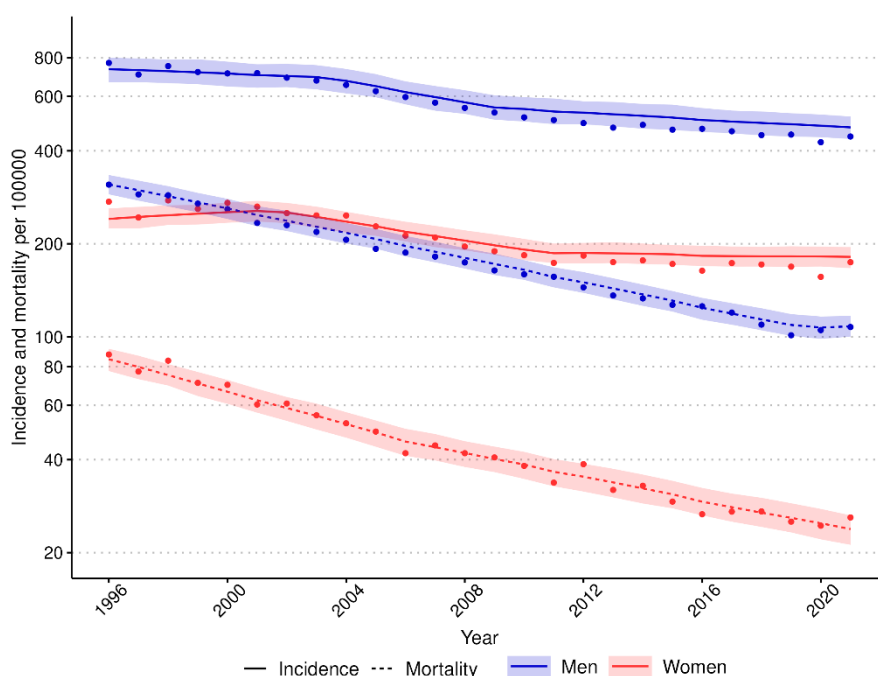
151 In men and women, ACS incidence and mortality declined overall during the study period. (Figure  
152 1). The decline in mortality was markedly steeper than the decline in incidence. The age-standardized  
153 ACS mortality rate declined by more than two thirds (in men 65.3% and in women 71.8%) and the  
154 incidence rate declined approximately by one third in men (35.1%) and by one quarter in women  
155 (24.6%).

156

157 Men have approximately two times higher incidence than women in the oldest age group and four  
158 times higher incidence in younger age groups (35-54 year old) (Figure 2A&B). Men have also  
159 approximately three times higher mortality in the oldest age group (65-74 year old) and five times  
160 higher mortality rate in the other age groups (Figure 2C&D). Annual incidence and mortality changes  
161 per age group, number of cases in the age groups, mean age of each group, and p-values of trends can  
162 be seen in Table 1.

163

164



165

166 **Figure 1:** Trends in incidence and mortality rates of ACS in men and women aged 35-75 years, 1996-2021. Rates include  
167 first non-fatal I20.0, I21, and I22 cases and fatal I20-25, I46, R96 and, R98 cases. Age-standardized rates per 100 000  
168 inhabitants were calculated with the 2013 European standard population as the reference. Observed incidence and  
169 mortality rates are presented as dots, the segmented (negative binomial) regression model's predicted values as a line and  
170 the segmented regression model's 95%-confidence intervals for predictions as a ribbon. The rates are presented on a  
171 logarithmic scale.

172

173

174

175

176

177

178

179

180

181

182

Incidence					
Age group	Mean age	Cases (N)	Average annual change (%)	95% CI	P-value
<b>Men</b>					
All (35-74)*	62.0	185 309	-2.01	-2.20 to -1.82	<1e-16
65-74*	69.6	84 763	-3.12	-3.29 to -2.96	<1e-16
55-64*	59.9	61 912	-2.06	-2.23 to -1.89	<1e-16
45-54*	50.4	30 985	-1.40	-1.57 to -1.22	<1e-16
35-44	40.9	7 649	-1.33	-1.63 to -1.04	<1e-16
<b>Women</b>					
All (35-74)*	64.7	74 087	-1.66	-1.83 to -1.48	<1e-16
65-74*	70.1	44 294	-3.28	-3.40 to -3.16	<1e-16
55-64*	60.2	20 304	-1.46	-1.70 to -1.21	<1e-16
45-54	50.5	7 818	0.20	-0.10 to 0.50	0.19
35-44	41.0	1 671	0.38	-0.25 to 1.02	0.24
Mortality					
<b>Men</b>					
All (35-74)*	64.5	56 900	-4.42	-4.59 to -4.24	<1e-16
65-74*	69.6	30 602	-4.49	-4.68 to -4.30	<1e-16
55-64*	60.4	18 028	-4.05	-4.29 to -3.82	<1e-16
45-54	50.8	6 835	-4.77	-5.09 to -4.45	<1e-16
35-44	40.7	1 435	-5.29	-5.98 to -4.60	<1e-16
<b>Women</b>					
All (35-74)*	66.2	16 007	-5.00	-5.21 to -4.72	<1e-16
65-74*	70.1	11 104	-5.50	-5.78 to -5.21	<1e-16
55-64	60.6	3 488	-3.84	-4.28 to -3.39	<1e-16
45-54	50.7	1 104	-4.47	-5.27 to -3.67	<1e-16
35-44	40.9	311	-4.87	-6.36 to -3.40	3.06e-10
Case fatality					
<b>Men</b>					
All (35-74)	62.0	185 309	-2.71	-2.84 to -2.57	<1e-16
65-74	69.6	84 763	-2.19	-2.37 to -2.01	<1e-16
55-64	59.9	61 912	-2.75	-3.00 to -2.52	<1e-16
35-54	48.5	38 634	-4.45	-4.78 to -4.12	<1e-16
<b>Women</b>					
All (35-74)	64.7	74 087	-3.35	-3.58 to -3.12	<1e-16
65-74	70.1	44 294	-3.15	-3.43 to -2.88	<1e-16
55-64	60.2	20 304	-2.79	-3.28 to -2.30	<1e-16
35-54	48.9	9 489	-5.74	-6.51 to -5.00	<1e-16

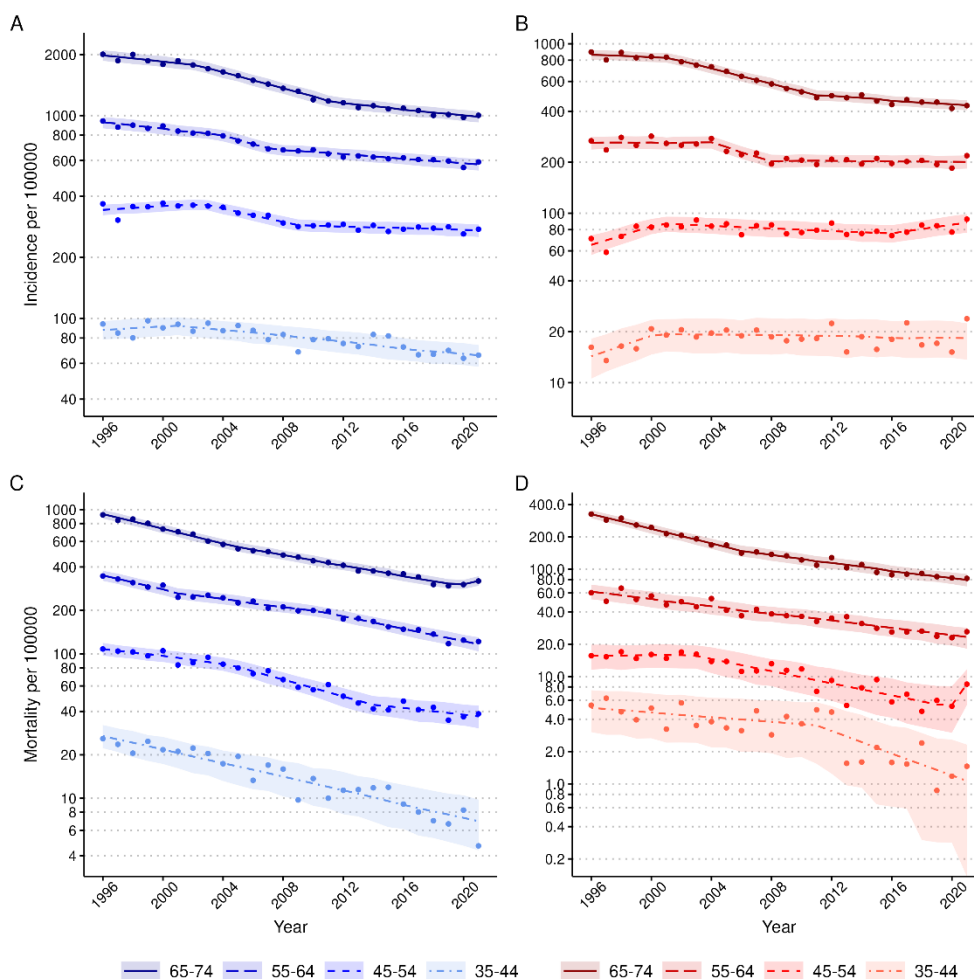
**Table 1:** Average annual changes in acute coronary syndrome incidence, mortality, and case fatality (CF) from 1996 to 2021. Incidence and mortality rate trends were analyzed using a Poisson or negative binomial regression model. CF trends were analyzed with a logistic regression model. The rate changes are presented as average annual change percentages during the study period. P-values represent the significance of the trend by study year.

\*Negative binomial model was used instead of Poisson model.

243 **Incidence trends**

244 The trends in ACS incidence are presented in Figure 2 A) men and B) women. In men, the incidence  
245 of ACS declined significantly in all age groups during the study period (annual percentage change  
246 (APC) in men -2.0% [95% CI -2.2 to -1.8]) (Table 1). Segmented regression however revealed that  
247 the incidence decline has slowed down significantly overall in men and men's age groups 65-74, and  
248 55-64 and halted in age group 45-54 from around 2007-2012 onwards (Supplemental Table 1,  
249 Supplemental Figures 3&4A).

250  
251 In women, the incidence rate declined significantly overall and in the older age groups (overall APC  
252 -1.7 [-1.8; -1.5], among 65-74 year old -3.3% [-3.4 to -3.2]) and among 55-64 year old -1.5% [-1.7 to  
253 -1.2]). The overall incidence in women did not decline after 2010 and age-specific incidence rates  
254 slowed down in the older age groups from 2008-2011 (Supplemental Table 1, Supplemental Figures  
255 3&4B). Importantly, in women aged 35-54, ACS incidence stayed the same for over two decades  
256 (APC of 35-44 year old 0.4% [-0.3 to 1.0] and 45-54 year old 0.2% [-0.1 to 0.5]). The stagnated or  
257 slowed incidence decline is mostly associated with inferior development of non-fatal incident ACS  
258 events compared to the incidence of all ACS events (Supplemental Figure 1A-C and Supplemental  
259 Table 3). The incidence of non-fatal ACS events among young women aged 35-54 has increased  
260 during the study period.  
261



262  
263 **Figure 2:** Trends in incidence and mortality rates of ACS in men and women by age group, 1996-2021. A) Incidence  
264 rates of men. B) Incidence rates of women. C) Mortality rates of men. D) Mortality rates of women. Incidence rates  
265 include first non-fatal I20.0, I21, and I22 and fatal I20-25, I46, R96, and R98 cases. Mortality rates include the fatal cases  
266 as mentioned above. Age-standardized rates per 100 000 inhabitants were calculated with the 2011-2030 European  
267 standard population as the reference. Observed incidence and mortality rates are presented as dots, the segmented, Poisson

268 or negative binomial regression model's predicted values as a line, and the regression model's 95%-confidence intervals  
 269 for predictions as a ribbon. The rates are presented on a logarithmic scale.

270

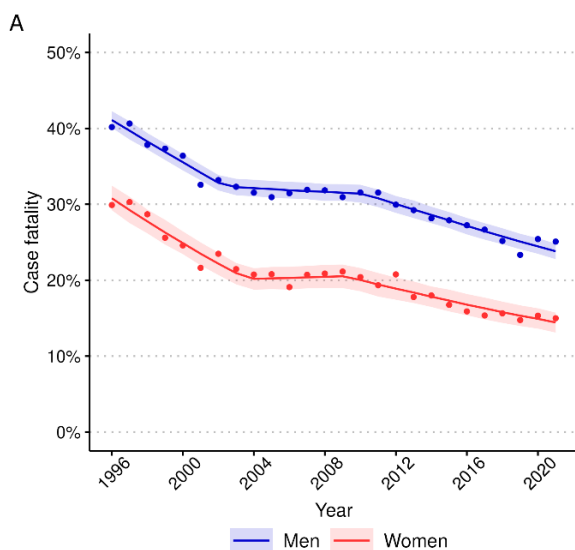
### 271 Mortality trends

272 The trends in ACS mortality are presented in Figure 2 C) men and D) women and the breakpoints in  
 273 Supplemental Figure 4C-D. The ACS mortality declined in both sexes and all age groups during the  
 274 study period (APC of the mortality in men - 4.4% [-4.6 to -4.2] and in women -5.0% [-5.2 to -4.7]).  
 275 Overall, the annual mortality change was very similar in all age groups. In women, mortality declined  
 276 most in the oldest age group (APC -5.5% [-5.8 to -5.2]) while in men, mortality declined most in the  
 277 youngest age group (APC -5.3% [-6.0 to -4.6]). However, in younger age groups, especially in  
 278 women, case numbers are low (Table 1).

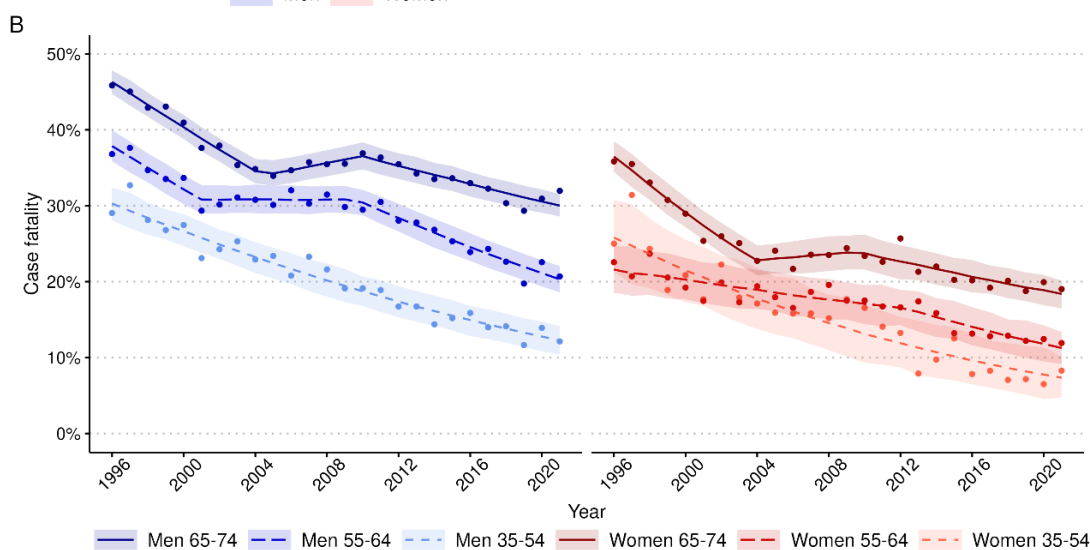
279

### 280 28-day case-fatality trends

281 ACS case-fatality declined over the study period in men and women (APC of the CF in men -2.7% [-  
 282 2.8 to -2.6] and in women -3.3% [-3.6 to -3.1]) (Figure 3A). Women exhibited lower ACS case-  
 283 fatality rates across equivalent age groups compared to men (Figure 3B). The decline was not linear,  
 284 particularly in the older age groups. The case fatality stayed the same or even increased a little from  
 285 around 2001 to 2010, depending on age group and sex (Supplemental Table 1 and Supplemental  
 286 Figure 5A&B). The annual decline in case fatality was most significant in the youngest age group,  
 287 almost two times faster in women and almost as fast in men compared to the older age groups.



**Figure 3:** Trends in case fatality (CF) of acute coronary syndrome (A) among men and women aged 35-74, and (B) by 10-year age group (B), 1996-2021. CF includes the first non-fatal I20.0, I21, and I22 and fatal I20-25, I46, R96, and R98 cases. CF was age-standardized using weights based on the age distribution of observed coronary events in populations participating in the WHO-MONICA project. Observed case-fatality is presented as dots, the segmented or logistic regression model's predicted values as a line and the regression model's 95%-confidence intervals for predictions as a ribbon.



288



## 289 Discussion

290

291 In this nationwide study of almost 260 000 cases, we found a declining incidence of acute coronary  
292 syndrome (ACS) in the population aged 35-74 during the study period of 25 years. In young women  
293 aged 35-54, however, the incidence did not decline. Also, in the oldest age groups, the declining  
294 incidence trends were slowed down during the study period. Furthermore, the overall incidence  
295 decline in women halted in the last decade. Other reports have shown that the ACS incidence trend  
296 has turned into increase, especially among younger age groups <sup>5 18</sup>. Our study also showed that the  
297 mortality rate declined in men and women and, unlike incidence, in all age groups throughout the  
298 study period. The rate of decline was approximately similar in all age groups. The decline in mortality  
299 is in line with the earlier prediction <sup>14</sup>. It is also worth noting that the decline in mortality was much  
300 faster than in incidence. Case fatality declined similarly to mortality in both men and women and in  
301 all age groups during the study period. The decline in case fatality was most significant in the  
302 youngest age group which consisted of people aged 35-54 years. The case fatality was overall much  
303 lower in women than in men.

304

305 To understand why the incidence of ACS is no longer steadily declining, we examined the results of  
306 the National FinHealth 2017 survey that has gathered information on the health of the Finnish adult  
307 population and on the risk factors influencing their health <sup>19</sup>. The FinHealth study showed that the  
308 proportion of smokers has declined. The study also showed that the prevalence of elevated LDL has  
309 declined, but no changes in low HDL levels were seen. Alcohol abstinence has also increased.  
310 However, dietary habits have not improved, obesity has increased, as well as the waist-to-hip ratio,  
311 and hypertension is still very common in Finland. In summary, except for obesity and diabetes, other  
312 ACS-related risk factors have improved.

313

314 One explanation for the halted incidence decline in women aged 35-54 could be that diabetes is a  
315 stronger risk factor in women than in men <sup>20</sup>, considering that diabetes prevalence has also increased  
316 <sup>19 21</sup>. Also, even as smoking has lost popularity, tobacco exposure, both current and accumulated,  
317 predisposes female smokers to more premature myocardial infarction than men <sup>22</sup>. Additionally, the  
318 use of oral contraceptives, which has increased in popularity in the last decades, could have influenced  
319 this negative development. However, the literature regarding their effect on the risk of ischemic heart  
320 disease is unanimous <sup>23-25</sup>. In addition to these somatic factors, psychosocial factors may play a role.  
321 It has been shown that women under 50 years of age who develop a myocardial infarction have more  
322 psychosocial risk factors than same-aged men and depressive symptoms have been shown to be  
323 associated with chronic heart disease events <sup>26</sup>.

324

325 Regarding prevention, studies have shown that primary prevention is implemented even better in  
326 women than in men, but women receive less invasive measures and guideline suggested secondary  
327 preventive medication than men after myocardial infarction. Although women have a lower risk for  
328 recurrent myocardial infarction and lower numbers of 30-day cardiovascular deaths compared to men,  
329 women are reported to have a higher rate of long-term all-cause mortality.<sup>27</sup>

330

331 In the older age groups, the slowing down of the incidence decline may be due to the exhaustion in  
332 optimizing preventive treatment and therapeutic inertia, especially when it comes to incorporating  
333 new expensive treatment modalities (e.g., PCSK9, siRNA drugs) that will be utilized in younger age  
334 groups <sup>28</sup>. In addition, for all age groups, improving ACS prevention and reducing mortality beyond  
335 optimal treatment of classical risk factors may require a novel avenue of targeting the residual risk <sup>29</sup>  
336 that may not be related to classical risk factors but mediated through inflammation and other poorly  
337 understood pathomechanisms within the vascular wall <sup>30</sup>. Recently new tools, such as polygenic risk  
338 scores, have been developed to predict the residual and genetic risk of ACS <sup>31</sup>.

339

340 A factor that could have an overall influence on the development of incidence and case fatality in the  
341 21st century is the introduction of sensitive troponins to clinical practice, which have the power to  
342 detect smaller myocardial infarctions.<sup>32</sup>. Additionally, the COVID-19 pandemic may have influenced  
343 the incidence and mortality figures of the last two years as COVID-19 is a risk factor for acute  
344 coronary syndrome<sup>33</sup>.

345  
346 In concordance with other recent reports<sup>34 35</sup>, we showed that ACS mortality declined steadily in  
347 women and men in all age groups. Awareness of coronary artery disease might influence earlier  
348 seeking of care, which results in lower mortality. Because of this favorable trend in mortality, Finland  
349 is included in the moderate-risk region in Europe based on the death risk due to cardiovascular  
350 disease, leaving still room for improvement as many countries in Western Europe belong to the low-  
351 risk region<sup>36</sup>. Taking this into account, a decline in mortality and incidence could be continuously  
352 achieved and improved, especially if the treatment methods evolve and there will be more focus on  
353 primary and secondary prevention.

354  
355 Our results showed that case fatality declined rapidly in men and women, especially in the youngest  
356 age group. Finland's positive trend might be explained by the same factors as the decrease in  
357 mortality. This can also be influenced by the introduction of sensitive troponins<sup>32</sup>. In addition, we  
358 identified a plateau phase in the overall declining case fatality trend from 2002 to 2010. An  
359 explanation for this plateau phase in CF is not known.

360  
361 Our study is based on comprehensive nationwide Finnish Cardiovascular Disease Register data which  
362 covers all symptomatic acute coronary syndrome incidents in Finland with a long study period of  
363 twenty-five years. However, the study should be interpreted with certain limitations in mind: the  
364 underlying Finnish health care registers do not provide individual information for example ECGs or  
365 troponin levels, thus the diagnoses of the cases cannot be further verified. Additionally, silent  
366 myocardial infarctions are not found in the registers. However, cardiovascular diagnoses in Finnish  
367 healthcare registers have been validated and found reliable which increases the confidence in our  
368 results<sup>13</sup>.

## 369 370 **Conclusions**

371  
372 Our study demonstrated diverging trends in different components of ACS event rates in the Finnish  
373 population aged 35-74 years. The ACS mortality and CF are steeply declining, whereas the incidence  
374 decline is leveling off. Notably, the decline in incidence in older age groups has slowed during the  
375 last decade. Also, the overall incidence in women ceased to decline. Indirectly, this may result in an  
376 increase in CAD patients in the Finnish population. Consequently, the need for treatment, secondary  
377 prevention, and rehabilitation resources is likely to increase as well. Particularly alarming is the halted  
378 incidence decline in women aged 35-54 years. Since the incidence of first events can be reduced by  
379 primary prevention only, this emphasizes the importance of improving the primary prevention  
380 measures, focusing especially on young and middle-aged women.

## 381 382 **Author contributions**

383  
384 A.K., M.R., V.S., A.H. and J.S. wrote the manuscript. M.P., A.H., M.R, V.S., and J.S. designed the  
385 research. A.K., M.R., V.S., A.H. and J.S. performed the research. A.K., I.H., O.K. and A.H. analyzed  
386 the data.

## 387 388 **Acknowledgement**

389

390 The authors wish to acknowledge CSC – IT Center for Science, Finland, for computational resources.

391

## 392 **Funding information**

393

394 M.R. received support from Sigrid Juselius Foundation, Emil Aaltonen Foundation, Biomedicum  
395 Helsinki Foundation, Orion Research Foundation, and from Finnish Foundation for Cardiovascular  
396 Research. V.S. was supported by the Juho Vainio Foundation. I.H. was supported by Aarne Koskelo  
397 Foundation and Otto A. Malm Foundation.

398

## 399 **Conflict of Interest**

400

401 V.S. has had a research collaboration with Bayer Ltd (outside the present study).

402

403

404

405

406

## 406 **References:**

407

408 1. Mahmood SS, Levy D, Vasan RS, Wang TJ. The Framingham Heart Study and the epidemiology of  
409 cardiovascular disease: a historical perspective. *Lancet* 2014;383(9921):999-1008. doi:  
10.1016/s0140-6736(13)61752-3 [published Online First: 20130929]

410

411 2. Roth GA, Mensah GA, Johnson CO, et al. Global Burden of Cardiovascular Diseases and Risk Factors,  
1990–2019. *Journal of the American College of Cardiology* 2020;76(25):2982-3021. doi:  
412 doi:10.1016/j.jacc.2020.11.010

413

414 3. Visseren FLJ, Mach F, Smulders YM, et al. 2021 ESC Guidelines on cardiovascular disease prevention in  
clinical practice. *Eur Heart J* 2021;42(34):3227-337. doi: 10.1093/eurheartj/ehab484

415

416 4. Mensah GA, Wei GS, Sorlie PD, et al. Decline in Cardiovascular Mortality: Possible Causes and  
Implications. *Circ Res* 2017;120(2):366-80. doi: 10.1161/circresaha.116.309115

417

418 5. Ma J, Ward EM, Siegel RL, Jemal A. Temporal Trends in Mortality in the United States, 1969-2013. *JAMA*  
2015;314(16):1731-39. doi: 10.1001/jama.2015.12319

419

420 6. O'Flaherty M, Allender S, Taylor R, et al. The decline in coronary heart disease mortality is slowing in  
young adults (Australia 1976-2006): a time trend analysis. *Int J Cardiol* 2012;158(2):193-8. doi:  
421 10.1016/j.ijcard.2011.01.016 [published Online First: 20110202]

422

423 7. Ng M, Fleming T, Robinson M, et al. Global, regional, and national prevalence of overweight and obesity  
in children and adults during 1980-2013: a systematic analysis for the Global Burden of Disease  
424 Study 2013. *Lancet* 2014;384(9945):766-81. doi: 10.1016/s0140-6736(14)60460-8 [published Online  
425 First: 20140529]

426

427 8. Jousilahti P, Laatikainen T, Peltonen M, et al. Primary prevention and risk factor reduction in coronary  
heart disease mortality among working aged men and women in eastern Finland over 40 years:  
428 population based observational study. *Bmj* 2016;352:i721. doi: 10.1136/bmj.i721 [published Online  
429 First: 20160301]

430

431 9. Laatikainen T, Critchley J, Vartiainen E, et al. Explaining the decline in coronary heart disease mortality in  
Finland between 1982 and 1997. *Am J Epidemiol* 2005;162(8):764-73. doi: 10.1093/aje/kwi274  
432 [published Online First: 20050908]

433

434 10. Havulinna AS, Pääkkönen R, Karvonen M, Salomaa V. Geographic patterns of incidence of ischemic  
stroke and acute myocardial infarction in Finland during 1991-2003. *Ann Epidemiol* 2008;18(3):206-  
435 13. doi: 10.1016/j.annepidem.2007.10.008

436

437 11. Lehto HR, Lehto S, Havulinna AS, et al. Sex differences in short- and long-term case-fatality of myocardial  
infarction. *Eur J Epidemiol* 2011;26(11):851-61. doi: 10.1007/s10654-011-9601-6 [published Online  
438 First: 20110630]

- 439 12. Dégano IR, Salomaa V, Veronesi G, et al. Twenty-five-year trends in myocardial infarction attack and  
440 mortality rates, and case-fatality, in six European populations. *Heart* 2015;101(17):1413-21. doi:  
441 10.1136/heartjnl-2014-307310 [published Online First: 20150408]
- 442 13. Pajunen P, Koukkunen H, Ketonen M, et al. The validity of the Finnish Hospital Discharge Register and  
443 Causes of Death Register data on coronary heart disease. *Eur J Cardiovasc Prev Rehabil*  
444 2005;12(2):132-7. doi: 10.1097/00149831-200504000-00007
- 445 14. Salomaa V, Havulinna AS, Koukkunen H, et al. Aging of the population may not lead to an increase in the  
446 numbers of acute coronary events: a community surveillance study and modelled forecast of the  
447 future. *Heart* 2013;99(13):954-59. doi: 10.1136/heartjnl-2012-303216
- 448 15. M. Mähönen HT-P, A. Rajakangas, Z. Cepaitis, K. Kuulasmaa, A. Dobson and U. Keil. Definitions of case  
449 fatality for coronary events in the WHO MONICA Project. 2000 doi:  
450 <https://www.thl.fi/publications/monica/carpfish/appendd/cfdef.htm>
- 451 16. Institute NC. Standard Population Data 2012 [cited 2023]. Available from:  
452 <https://seer.cancer.gov/stdpopulations/stdpop.19ages.html>.
- 453 17. R: A language and enviromental for statistical computing [program]: R Foundation for Statistical  
454 Computing, 2022.
- 455 18. Gabet A, Danchin N, Juillièrè Y, Olié V. Acute coronary syndrome in women: rising hospitalizations in  
456 middle-aged French women, 2004-14. *Eur Heart J* 2017;38(14):1060-65. doi:  
457 10.1093/eurheartj/ehx097
- 458 19. P. Koponen, K. Borodulin, A. Lundqvist, et al. Terveys, toimintakyky ja hyvinvointi Suomessa, FinTerveys  
459 2017 -tutkimus, 2017.
- 460 20. Huxley R, Barzi F, Woodward M. Excess risk of fatal coronary heart disease associated with diabetes in  
461 men and women: meta-analysis of 37 prospective cohort studies. *BMJ* 2006;332(7533):73-78. doi:  
462 10.1136/bmj.38678.389583.7C
- 463 21. M. Arffman, P. Ilanne-Parikka, I. Keskimäki, et al. Tyypin 1 ja 2 diabeteksen ja niiden lisäsairauksien  
464 ilmaantuvuus ja esiintyvyys Suomessa vuosina 2000–2017. 2020 doi:  
465 [https://www.julkari.fi/bitstream/handle/10024/139885/URN\\_ISBN\\_978-952-343-501-](https://www.julkari.fi/bitstream/handle/10024/139885/URN_ISBN_978-952-343-501-8.pdf?sequence=1&isAllowed=y)  
466 [8.pdf?sequence=1&isAllowed=y](https://www.julkari.fi/bitstream/handle/10024/139885/URN_ISBN_978-952-343-501-8.pdf?sequence=1&isAllowed=y)
- 467 22. Grundtvig M, Hagen TP, German M, Reikvam A. Sex-based differences in premature first myocardial  
468 infarction caused by smoking: twice as many years lost by women as by men. *Eur J Cardiovasc Prev*  
469 *Rehabil* 2009;16(2):174-9. doi: 10.1097/HJR.0b013e328325d7f0
- 470 23. Okoth K, Chandan JS, Marshall T, et al. Association between the reproductive health of young women  
471 and cardiovascular disease in later life: umbrella review. *Bmj* 2020;371:m3502. doi:  
472 10.1136/bmj.m3502 [published Online First: 20201007]
- 473 24. Barsky L, Shufelt C, Lauzon M, et al. Prior Oral Contraceptive Use and Longer Term Mortality Outcomes  
474 in Women with Suspected Ischemic Heart Disease. *J Womens Health (Larchmt)* 2021;30(3):377-84.  
475 doi: 10.1089/jwh.2020.8743 [published Online First: 20210121]
- 476 25. Bassuk SS, Manson JE. Oral contraceptives and menopausal hormone therapy: relative and attributable  
477 risks of cardiovascular disease, cancer, and other health outcomes. *Ann Epidemiol* 2015;25(3):193-  
478 200. doi: 10.1016/j.annepidem.2014.11.004 [published Online First: 20141113]
- 479 26. Yusuf S, Hawken S, Ounpuu S, et al. Effect of potentially modifiable risk factors associated with  
480 myocardial infarction in 52 countries (the INTERHEART study): case-control study. *Lancet*  
481 2004;364(9438):937-52. doi: 10.1016/s0140-6736(04)17018-9
- 482 27. DeFilippis EM, Collins BL, Singh A, et al. Women who experience a myocardial infarction at a young age  
483 have worse outcomes compared with men: the Mass General Brigham YOUNG-MI registry.  
484 *European Heart Journal* 2020;41(42):4127-37. doi: 10.1093/eurheartj/ehaa662
- 485 28. Dixon DL, Sharma G, Sandesara PB, et al. Therapeutic Inertia in Cardiovascular Disease Prevention: Time  
486 to Move the Bar. *J Am Coll Cardiol* 2019;74(13):1728-31. doi: 10.1016/j.jacc.2019.08.014
- 487 29. Toso A, Leoncini M, Maioli M, et al. Residual risk after acute coronary syndrome: the PRATO-ACS  
488 Registry. *European Heart Journal* 2021;42(Supplement\_1) doi: 10.1093/eurheartj/ehab724.2466

- 489 30. Del Buono MG, Montone RA, Iannaccone G, et al. Redefining residual inflammatory risk after acute  
490 coronary syndrome. *Future Cardiol* 2022;18(2):115-23. doi: 10.2217/fca-2021-0032 [published  
491 Online First: 20210816]
- 492 31. Klarin D, Natarajan P. Clinical utility of polygenic risk scores for coronary artery disease. *Nat Rev Cardiol*  
493 2022;19(5):291-301. doi: 10.1038/s41569-021-00638-w [published Online First: 20211122]
- 494 32. Salomaa V, Ketonen M, Koukkunen H, et al. The effect of correcting for troponins on trends in coronary  
495 heart disease events in Finland during 1993–2002: the FINAMI study. *European Heart Journal*  
496 2006;27(20):2394-99. doi: 10.1093/eurheartj/ehl120
- 497 33. Katsoularis I, Fonseca-Rodríguez O, Farrington P, et al. Risk of acute myocardial infarction and ischaemic  
498 stroke following COVID-19 in Sweden: a self-controlled case series and matched cohort study.  
499 *Lancet* 2021;398(10300):599-607. doi: 10.1016/s0140-6736(21)00896-5 [published Online First:  
500 20210729]
- 501 34. Neumann JT, Goßling A, Sörensen NA, et al. Temporal trends in incidence and outcome of acute  
502 coronary syndrome. *Clinical Research in Cardiology* 2020;109(9):1186-92. doi: 10.1007/s00392-020-  
503 01612-1
- 504 35. Zuin M, Rigatelli G, Temporelli P, et al. Trends in acute myocardial infarction mortality in the European  
505 Union, 2012–2020. *European Journal of Preventive Cardiology* 2023;30(16):1758-71. doi:  
506 10.1093/eurjpc/zwad214
- 507 36. SCORE2 wg risk prediction algorithms: new models to estimate 10-year risk of cardiovascular disease in  
508 Europe. *European Heart Journal* 2021;42(25):2439-54. doi: 10.1093/eurheartj/ehab309
- 509
- 510
- 511
- 512
- 513
- 514
- 515
- 516
- 517
- 518
- 519
- 520
- 521
- 522
- 523
- 524
- 525
- 526
- 527
- 528
- 529

530 **Supplemental Material**

531 **Supplemental Table 1:** Segmented (Poisson or negative binomial) regression model’s breakpoints and intervals of  
532 incidence, mortality, and case fatality trends. Intervals where there was no trend change are shown on a yellow  
533 background and increasing trends are shown on a red background.

Incidence				
Age group	Breakpoints	Interval 1 (estimate + slope [95% CI])	Interval 2 (estimate + slope [95% CI])	Interval 3 (estimate + slope [95% CI])
<b>Men</b>				
All (35-74)	2003, 2009	-10.398 - 0.009 [-0.020; 0.002] * year	-10.175 - 0.039 [-0.062; -0.017] * year	-10.521 - 0.013 [-0.018; -0.007] * year
65-74	2002, 2012	-8.383 - 0.018 [-0.029; -0.007] * year	-8.215 - 0.045 [-0.053; -0.038] * year	-8.636 - 0.018 [-0.025; -0.012] * year
55-64	2004, 2007	-8.880 - 0.018 [-0.027; -0.009] * year	-8.662 - 0.047 [-0.073; -0.020] * year	-9.045 - 0.013 [-0.017; -0.009] * year
45-54	2003, 2009	-10.924 - 0.006 [-0.004; 0.017] * year	-10.626 - 0.037 [-0.049; -0.027] * year	-11.052 - 0.005 [-0.010; 0.000] * year
35-44	2001	-13.973 + 0.010 [-0.015; 0.034] * year	-13.840 - 0.017 [-0.021; -0.012] * year	-
<b>Women</b>				
All (35-74)	2001, 2011	-12.619 + 0.012 [-0.004; 0.028] * year	-12.367 - 0.035 [-0.043; -0.026] * year	-12.810 - 0.004 [-0.011; 0.003] * year
65-74	2001, 2011	-11.582 - 0.008 [-0.022; 0.006] * year	-11.360 - 0.051 [-0.059; -0.043] * year	-11.888 - 0.015 [-0.021; -0.011] * year
55-64	2004, 2008	-12.083 + 0.001 [-0.010; 0.011] * year	-11.567 - 0.064 [-0.120; -0.008] * year	-12.315 - 0.001 [-0.007; 0.004] * year
45-54	2001, 2016	-13.431 + 0.060 [0.024; 0.097] * year	-13.121 - 0.009 [-0.015; -0.002] * year	-13.881 + 0.029 [-0.007; 0.066] * year
35-44	2000	-16.447 + 0.069 [-0.009; 0.147] * year	-16.132 - 0.003 [-0.011; 0.006] * year	-
Mortality				
<b>Men</b>				
All (35-74)	2020	-12.377 - 0.046 [-0.048; -0.044] * year	-13.618 + 0.007 [-0.101; 0.114] * year	-
65-74	2005, 2020	-10.349 - 0.060 [-0.068; -0.051] * year	-10.504 - 0.042 [-0.046; -0.037] * year	-12.784 + 0.054 [-0.050; 0.016] * year
55-64	2001, 2010	-11.605 - 0.055 [-0.075; -0.036] * year	-11.720 - 0.032 [-0.043; -0.021] * year	-11.477 - 0.049 [-0.058; -0.040] * year
45-54	2005, 2014	-13.462 - 0.033 [-0.046; -0.020] * year	-13.170 - 0.067 [-0.083; -0.050] * year	-13.895 - 0.027 [-0.052; -0.001] * year
35-44	-	-	-	-
<b>Women</b>				
All (35-74)	2006	-15.091 - 0.061 [-0.069; -0.053] * year	-15.258 - 0.044 [-0.050; -0.038] * year	-
65-74	2006	-14.738 - 0.079 [-0.088; -0.069] * year	-15.106 - 0.042 [-0.049; -0.035] * year	-
55-64	-	-	-	-
45-54	2003, 2020	-14.752 - 0.001 [-0.049; 0.046] * year	-14.320 - 0.065 [-0.082; -0.048] * year	-26.779 + 0.456 [-0.136; 1.048] * year
35-44	2011	-15.841 - 0.025 [-0.055; 0.005] * year	-14.442 - 0.119 [-0.192; 0.045] * year	-
Case fatality				
<b>Men</b>				
All (35-74)	2002, 2010	-2.557 - 0.060 [-0.069; -0.052] * year	-2.908 - 0.006 [-0.013; 0.002] * year	-2.473 - 0.036 [-0.041; -0.031] * year
65-74	2004, 2010	-2.059 - 0.061 [-0.070; -0.053] * year	-2.746 + 0.020 [0.002, 0.038] * year	-2.088 - 0.027 [-0.034; -0.020] * year
55-64	2001, 2010	-2.917 - 0.062 [-0.083; -0.042] * year	-3.228 - 0.000 [-0.013; 0.013] * year	-2.561 - 0.049 [-0.057; -0.041] * year
35-54	-	-	-	-
<b>Women</b>				
All (35-74)	2004, 2009	-2.881 - 0.075 [-0.088; -0.063] * year	-3.491 + 0.004 [-0.017; 0.026] * year	-2.959 - 0.036 [-0.045; -0.028] * year
65-74	2004, 2010	-3.380 - 0.085 [-0.099; -0.070] * year	-4.142 + 0.012 [-0.016; 0.04] * year	-3.582 - 0.029 [-0.040; -0.019] * year
55-64	2012	-3.724 - 0.021 [-0.030; -0.012] * year	-3.244 - 0.050 [-0.077; -0.023] * year	-
35-54	-	-	-	-

534 **Supplemental Table 2:** The weights for age-standardizing case fatality. Based on the age distribution of observed  
535 coronary events in MNICA populations in the WHO-MONICA project.

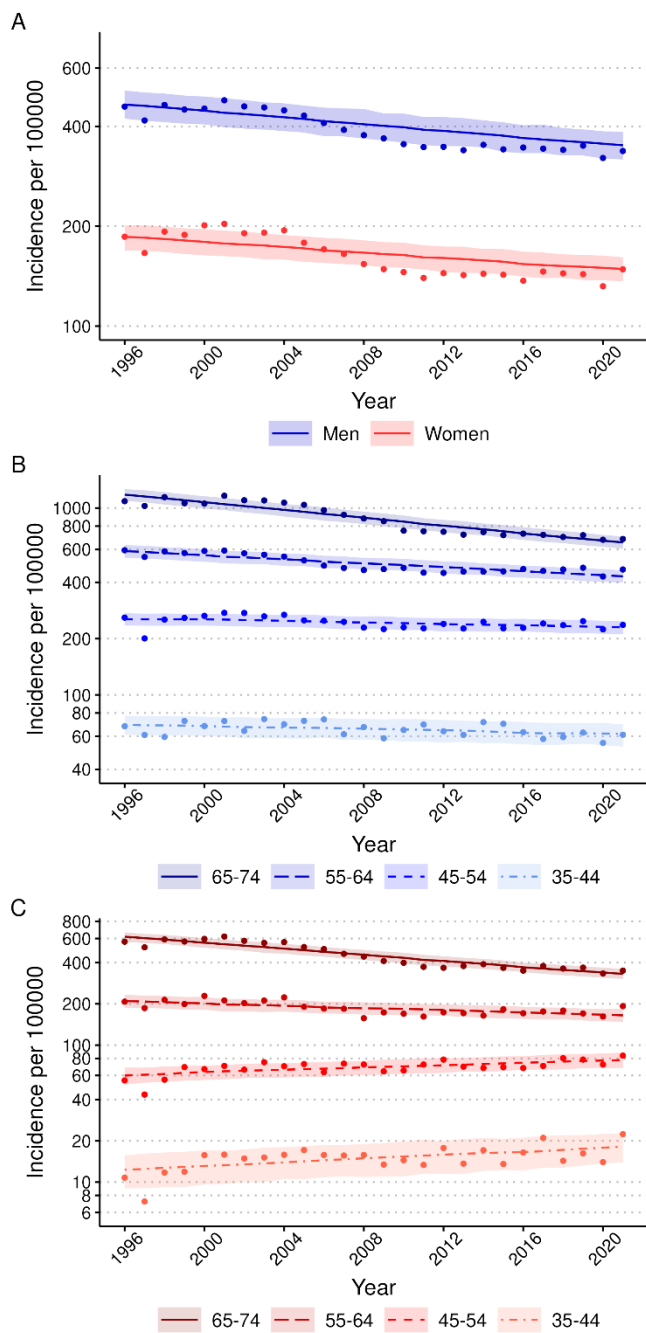
Age (years)	Weights
0-4	1
5-9	1
10-14	1
15-19	1
20-24	1
25-29	1
30-34	2
35-39	5
40-44	9
45-49	16
50-54	26
55-59	42
60-64	56
65-69	75
70-74	93
75-79	100
80-84	100
85-	100

536

537 **Supplemental Table 3:** Average annual changes in acute coronary syndrome non-fatal incident incidence from 1996 to  
538 2021. Incidence rate trends were analyzed using a Poisson or negative binomial regression model. The rate changes are  
539 presented as average annual change percentages during the study period. P-values represent the significance of the trend  
540 by study year.

Incidence			
Age group	Average annual change (%)	95% CI	P-value
<b>Men</b>			
All (35-74)*	-1.16	-1.37 to -0.95	5.70e-27
65-74*	-2.35	-2.55 to -2.16	3.56e-123
55-64*	-1.25	-1.44 to -1.06	1.09e-35
45-54*	-0.47	-0.67 to -0.26	6.26e-6
35-44	-0.44	-0.77 to -0.12	0.008
<b>Women</b>			
All (35-74)*	-0.92	-1.11 to -0.71	1.16e-18
65-74*	-2.48	-2.69 to -2.27	6.27e-117
55-64*	-0.97	-1.24 to -0.71	1.36e-12
45-54	0.96	0.64 to 1.29	5.65e-9
35-44	1.57	0.86 to 2.29	1.35e-5

541 \*Negative binomial model was used instead of Poisson model.



**Supplemental Figure 1:** Trends in incidence of first non-fatal ACS incidents in men and women by age group, 1996-2021. A. Incidence rates of men and women aged 35-74. B. Incidence rates of men in 10-year age groups. C. Incidence rates of women in 10-year age groups. Incidence rates include first non-fatal I20.0, I21, and I22 cases. Age-standardized incidence rates per 100 000 inhabitants were calculated with the 2011-2030 European standard population as the reference. Observed incidences are presented as dots, the segmented (Poisson or negative binomial) regression model predicted values as a line and the segmented regression model 95%-confidence intervals for predictions as a ribbon. The rates are presented on a logarithmic scale.

542  
543  
544  
545  
546  
547  
548  
549



Finnish population aged 35-74



Acute coronary syndrome (ACS) incidents between 1996-2021



**ACS events and their ICD10-codes included in the study**

- Non-fatal hospitalizations for MI or unstable angina (ICD-9: 410; ICD-10: I20.0, I21-I22)
- Deaths with CHD (ICD-9: 410-414; ICD-10: I20-I25)
- Deaths with cardiac arrest (ICD-10: I46)
- Sudden death for unknown reason (Finnish ICD-9: 798, not 7980A; ICD-10: R96)
- Unwitnessed death (ICD-10: R98) as the underlying or direct cause of death
- Deaths with MI (ICD-9: 410; ICD-10: I21-I22) as the contributing cause of death.

Included persons without previous ACS incident in the last 10 years ("first cases")

Data collected from Finnish country-wide registers, i.e., hospital discharges, from the Care Register for Health Care and the National Causes of Death Register.

186 489 non-fatal incidents

72 907 fatal incidents

Died within 28 days from the onset of the event

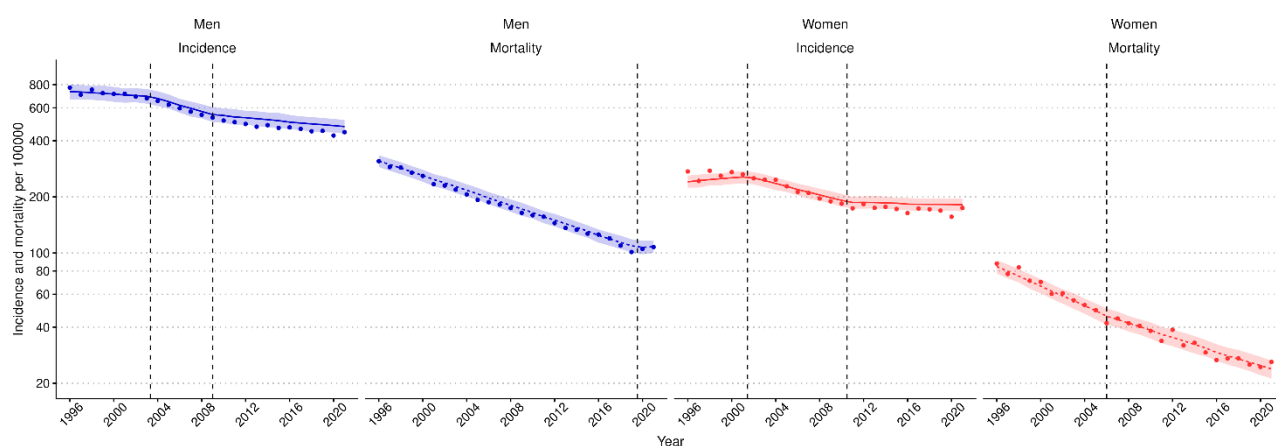
Incidence and mortality rates, and the significance of their trends analyzed with Poisson and negative binomial regression models. Case fatality analyzed with logistics regression model. Trend changes further analyzed with segmented regression model.

550

551 **Supplemental Figure 2:** Flowchart of the study population and methods.

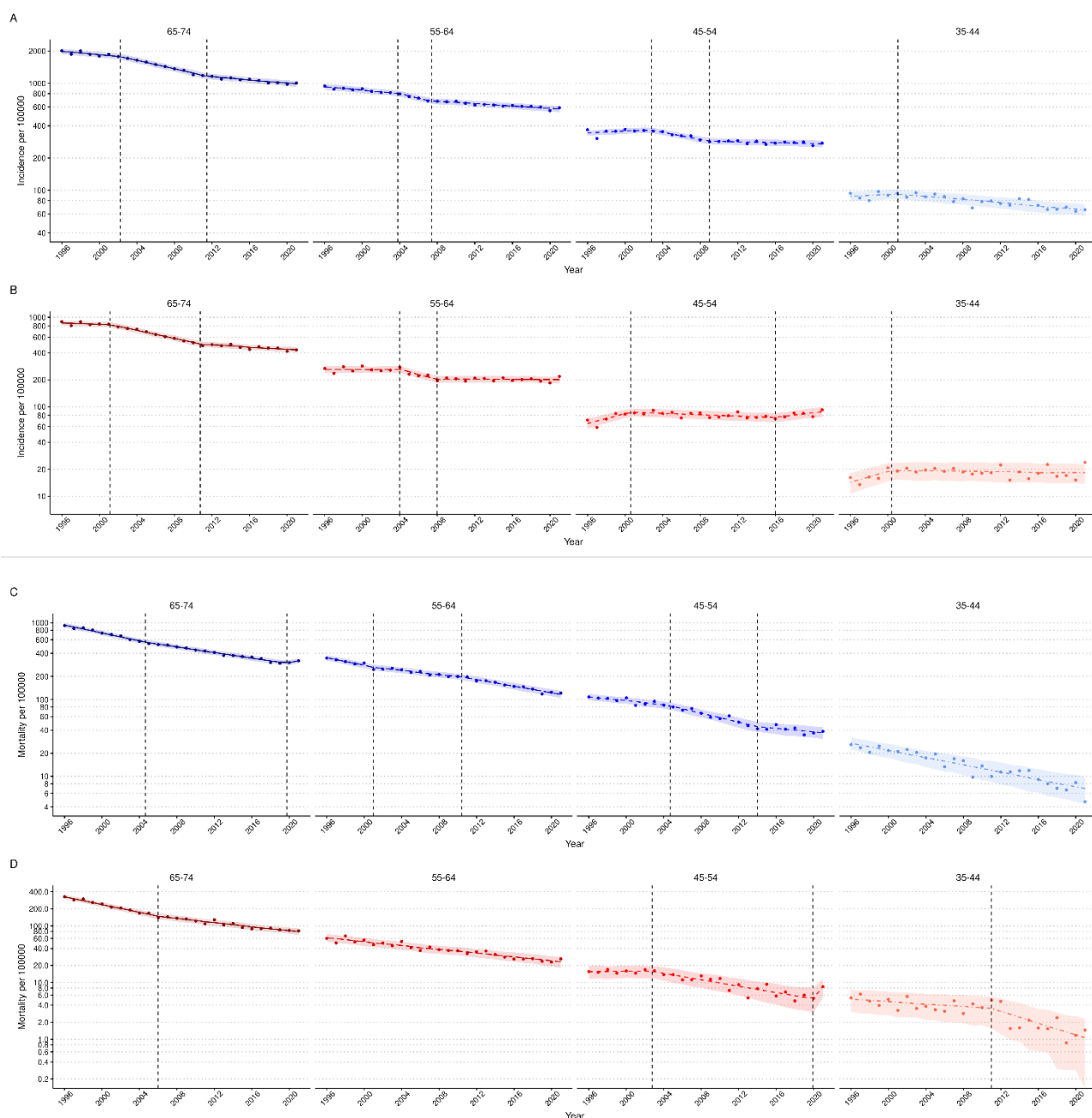
552

553



554

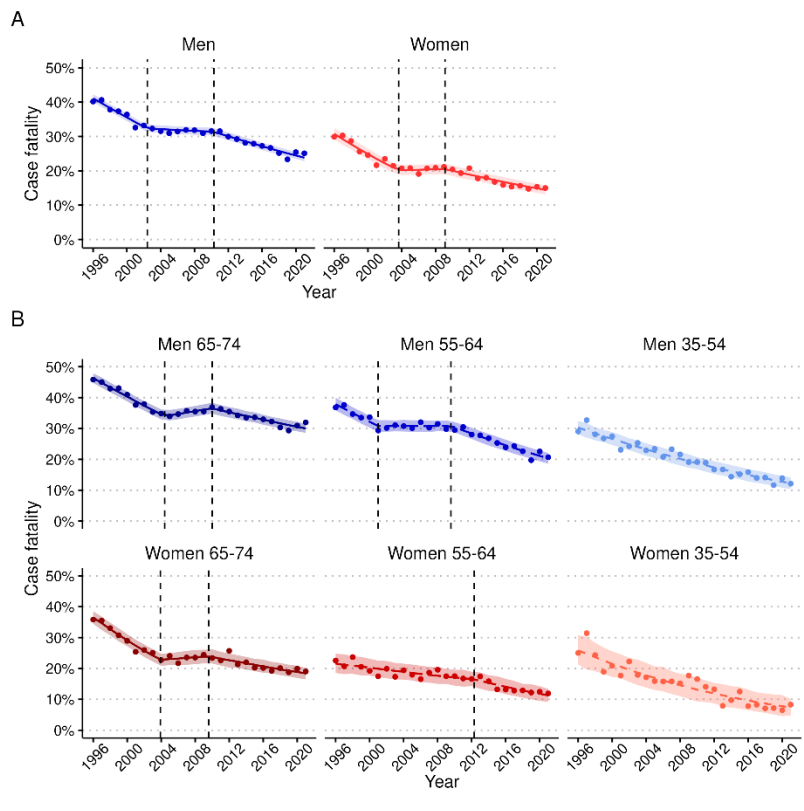
555 **Supplemental Figure 3:** Trends in incidence and mortality rates of acute coronary syndrome in men and women aged  
 556 35-75 years, 1996-2021. Rates include first non-fatal I20.0, I21, and I22 cases and fatal I20-25, I46, R96 and, R98  
 557 cases. Age-standardized rates per 100 000 inhabitants were calculated with the 2013 European standard population as  
 558 the reference. Observed incidence and mortality rates are presented as dots, the segmented (negative binomial)  
 559 regression model's predicted values as a line, and the regression model's 95%-confidence intervals for predictions as a  
 560 ribbon. Breakpoints where there is significant trend change are marked as vertical dashed lines. The rates are presented  
 561 on a logarithmic scale.  
 562



564

565 **Supplemental Figure 4:** Trends in incidence and mortality rates of acute coronary syndrome in men and women by age  
 566 group, 1996-2021. A) Incidence rates of men, and B) women. C) Mortality rates of men, and D) women. Incidence rates  
 567 include first non-fatal I20.0, I21, and I22 and fatal I20-25, I46, R96, and R98 cases. Mortality rates include the fatal cases  
 568 as mentioned above. Age-standardized rates per 100 000 inhabitants were calculated with the 2011-2030 European  
 569 standard population as the reference. Observed incidence and mortality rates are presented as dots, the segmented, Poisson  
 570 or negative regression model's predicted values as a line, and the regression model's 95%-confidence intervals for  
 571 predictions as a ribbon. Breakpoints where there is significant trend change are marked as vertical dashed lines. The rates  
 572 are presented on a logarithmic scale.  
 573

574



575

576 **Supplemental Figure 5:** Trends in case fatality (CF) of acute coronary syndrome A) among men and women aged 35-  
577 74, and B) by 10-year age groups, 1996-2021. CF includes the first non-fatal I20.0, I21, and I22 and fatal I20-25, I46,  
578 R96, and R98 cases. CF was age-standardized using weights based on the age distribution of observed coronary events  
579 in populations participating in the WHO-MONICA project. Observed case-fatality is presented as dots, the segmented  
580 or logistic regression model's predicted values as a line, and the regression model's 95%-confidence intervals for  
581 predictions as a ribbon. Breakpoints where there is significant trend change are marked as vertical dashed lines.  
582