

Cerebrovascular disease drives Alzheimer plasma biomarker concentrations in adults with Down syndrome

Natalie C. Edwards^{1,2,3}, Patrick J. Lao^{1,2}, Mohamad J. Alshikho^{1,2}, Olivia M. Ericsson^{1,2}, Batool Rizvi⁴, Melissa E. Petersen⁵, Sid O'Bryant⁵, Lisi Flores-Aguilar⁶, Sabrina Simoes^{1,2}, Mark Mapstone⁷, Dana L. Tudorascu⁸, Shorena Janelidze⁹, Oskar Hansson^{9,10}, Benjamin L. Handen⁸, Bradley T. Christian¹¹, Joseph H. Lee^{1,2}, Florence Lai¹², H Diana Rosas^{12,13}, Shahid Zaman¹⁴, Ira T. Lott¹⁵, Michael A. Yassa^{4,16}, José Gutierrez, M.D², Donna M. Wilcock^{17,18,19}, Elizabeth Head⁶, & Adam M. Brickman^{1,2,*,#}

1) Taub Institute for Research on Alzheimer's Disease and the Aging Brain, Columbia University, New York City, NY, USA. 2) Department of Neurology, Vagelos College of Physicians and Surgeons, Columbia University, New York City, NY, USA. 3) Department of Neuroscience, Columbia University, New York City, NY, USA. 4) Department of Neurobiology & Behavior, University of California, Irvine, CA, USA. 5) University of North Texas Health Science Center, Fort Worth, TX, USA. 6) Department of Pathology and Laboratory Medicine, University of California Irvine School of Medicine, University of California, Irvine, CA, USA. 7) Department of Neurology, University of California, Irvine, CA, USA. 8) Department of Psychiatry, University of Pittsburgh, Pittsburgh, PA, USA. 9) Clinical Memory Research Unit, Department of Clinical Sciences Malmö, Lund University, Lund, Sweden. 10) Memory Clinic, Skåne University Hospital, Malmö, Sweden. 11) Waisman Center, University of Wisconsin-Madison, Madison, WI, USA. 12) Department of Neurology, Harvard Medical School, Massachusetts General Hospital, Boston, MA, USA. 13) Department of Radiology, Center for Neuroimaging of Aging and neurodegenerative Diseases, Athinoula A. Martinos Center for Biomedical Imaging, Charlestown, MA, USA. 14) Department of Psychiatry, University of Cambridge, Cambridge, UK. 15) Department of Pediatrics and Neurology, School of Medicine, University of California, Irvine, CA, USA. 16) Center for the Neurobiology of Learning and Memory, University of California, Irvine, CA, USA. 17) Stark Neurosciences Research Institute, Indiana University School of Medicine, Indianapolis, IN, USA. 18) Department of Neurology, Indiana University School of Medicine, Indianapolis, IN, USA. 19) Anatomy, Cell Biology and Physiology, Indiana University School of Medicine, Indianapolis, IN, USA.

#A complete listing of the Alzheimer's Biomarker Consortium – Down Syndrome (ABC-DS) investigators can be found at the conclusion of this manuscript

*Corresponding Author

Adam M. Brickman, PhD
Taub Institute for Research on Alzheimer's Disease and the Aging Brain
Department of Neurology
Vagelos College of Physicians and Surgeons
Columbia University
630 W 168th Street
New York, NY 10032
amb2139@columbia.edu
+1 212 342 1348

Key Points

Question: Do white matter hyperintensities, a magnetic resonance imaging marker of small vessel cerebrovascular disease, predict plasma Alzheimer’s biomarker concentrations of amyloid, tau, and neuroinflammatory pathophysiology and downstream neurodegeneration in adults with Down syndrome?

Findings: Increases in white matter hyperintensity volume precede and promote inflammation- and tau-related pathophysiology, directly and indirectly, leading to downstream neurodegeneration.

Meaning: Small vessel cerebrovascular disease may contribute to the pathophysiological progression of Alzheimer’s disease in adults with Down syndrome. These findings support the hypothesis that cerebrovascular disease is a core feature of Alzheimer’s disease in adults with Down syndrome.

Abstract

Importance: By age 40 years over 90% of adults with Down syndrome (DS) have Alzheimer's disease (AD) pathology and most progress to dementia. Despite having few systemic vascular risk factors, individuals with DS have elevated cerebrovascular disease (CVD) markers that track with the clinical progression of AD, suggesting a role for CVD that is hypothesized to be mediated by inflammatory factors.

Objective: To examine the pathways through which small vessel CVD contributes to AD-related pathophysiology and neurodegeneration in adults with DS.

Design: Cross sectional analysis of neuroimaging, plasma, and clinical data.

Setting: Participants were enrolled in Alzheimer's Biomarker Consortium – Down Syndrome (ABC-DS), a multisite study of AD in adults with DS.

Participants: One hundred eighty-five participants (mean [SD] age=45.2 [9.3] years) with available MRI and plasma biomarker data were included. White matter hyperintensity (WMH) volumes were derived from T2-weighted FLAIR MRI scans and plasma biomarker concentrations of amyloid beta (A β 42/A β 40), phosphorylated tau (p-tau217), astrocytosis (glial fibrillary acidic protein, GFAP), and neurodegeneration (neurofilament light chain, NfL) were measured with ultrasensitive immunoassays.

Main Outcomes and Measures: We examined the bivariate relationships of WMH, A β 42/A β 40, p-tau217, and GFAP with age-residualized NfL across AD diagnostic groups. A series of mediation and path analyses examined causal pathways linking WMH and AD pathophysiology to promote neurodegeneration in the total sample and groups stratified by clinical diagnosis.

Results: There was a direct and indirect bidirectional effect through GFAP of WMH on p-tau217 concentration, which was associated with NfL concentration in the entire sample. Among cognitively stable participants, WMH was directly and indirectly, through GFAP, associated with p-tau217 concentration, and in those with MCI, there was a direct effect of WMH on p-tau217 and NfL concentrations. There were no associations of WMH with biomarker concentrations among those diagnosed with dementia.

Conclusions and Relevance: The findings suggest that among individuals with DS, CVD promotes neurodegeneration by increasing astrocytosis and tau pathophysiology in the presymptomatic phases of AD. This work joins an emerging literature that implicates CVD and its interface with neuroinflammation as a core pathological feature of AD in adults with DS.

Introduction

Virtually all individuals with Down syndrome (DS) develop Alzheimer's disease (AD) pathology, including abnormal amyloid-beta ($A\beta$) plaques and tau neurofibrillary tangles, by the age of 40 years^{1,2} and most develop dementia by the age of 60.³ Down syndrome is considered a genetic form of AD⁴ and pathogenesis is attributable to the triplication of chromosome 21, which contains the amyloid precursor protein (*APP*) coding gene.⁵ Models of AD progression in both late onset and genetic forms emphasize the role of $A\beta$ in initiating tau pathology and subsequent neurodegeneration, sometimes referred to as the 'ATN framework.'⁶ While there is general support for this pathophysiological cascade,^{6,7} there is increasing evidence that additional pathways may promote AD pathogenesis and progression.⁸

Cerebrovascular disease contributes to risk and course of clinical AD and increases the likelihood of developing dementia.^{9,10} Neuroimaging biomarkers for small vessel CVD, including white matter hyperintensities (WMH), are associated with neurodegeneration, indexed by AD-related patterns of cortical atrophy and fluid biomarker concentrations.¹¹⁻¹³ Despite consistent observations of its occurrence and contributions to clinical outcomes in people with AD, CVD is generally considered a common comorbidity with AD that is not a hallmark characteristic of the disease.⁶

We turned to populations at genetic risk to determine the extent to which CVD represents a 'core feature' of AD. Among community-dwelling older adults, those carrying the *APOE* $\epsilon 4$ allele, the strongest genetic risk factor for late onset AD, there are greater degrees of cerebrovascular disease than in non- $\epsilon 4$ carriers.¹⁴ Despite their younger age and relatively low vascular risk factor profiles, individuals with autosomal dominant, fully penetrant mutations for AD, have

increased WMH volumes up to 20 years prior to expected symptom onset compared with individuals without genetic mutations for AD but who are at similar risk.¹³ Such changes account for more variance in cognition than do other AD biomarkers.¹⁵ Similarly, individuals with DS generally have lower degrees of vascular risk compared with neurotypical adults and seem to be protected against developing hypertension,¹⁶⁻¹⁸ yet have neuroimaging evidence of CVD that increases with clinical progression of AD.¹⁹

Evidence from late onset and genetic forms of AD suggests that cerebrovascular pathology is indeed a prominent feature of AD that cannot be attributable solely to exposure to vascular risk factors, but whether CVD promotes primary AD pathophysiological progression remains unclear. Reports of associations between CVD and AD biomarkers are mixed, with some showing codependency²⁰ and others not.^{21,22} In a preclinical model of WMH, we found that white matter damage induced by transient hypoperfusion promotes tau hyperphosphorylation, but it is unclear what factors mediate this effect.¹² Emerging work suggests the critical role of neuroinflammation, mainly manifesting as a change in microglia morphology,²³⁻²⁶ astrocytosis,²⁷⁻²⁹ and inflammatory mediators,³⁰ in AD pathogenesis and course, with emerging evidence of intimate crosstalk between inflammatory processes and the brain's vasculature.³¹ In adults with DS, MRI markers of CVD are associated with proteomic patterns reflective of inflammation earlier in the disease and with patterns reflective of neurodegeneration later in the disease.³² Glial fibrillary acidic protein (GFAP) is a cytoskeletal protein found in astrocytes, released during astrogliosis, and can be measured reliably in cerebrospinal and blood compartments.³³ GFAP concentration is elevated in people with and at-risk for AD³⁴⁻³⁶ and appears to mediate the relationship between A β and tau pathology.^{37,38} In adults with DS, plasma GFAP concentration discriminates between individuals who are asymptomatic and those diagnosed with AD.³⁹

Further, GFAP levels are strongly correlated with indicators of A β and tau pathology, neurodegeneration, and clinical progression of AD in adults with DS.³⁹⁻⁴¹

In the current study, we examined the association between WMH, as a marker of small vessel cerebrovascular disease, and AD plasma biomarker concentrations, including A β 40/A β 42, phosphorylated tau 217 (p-tau217), and GFAP, with neurofilament light chain (NfL) across disease stages in adults with DS. Because (i) astrocytosis is prominent around blood vessels in AD,⁴² (ii) induced cerebral hypoperfusion, a characteristic of DS,⁴³ increases the number of GFAP positive astrocytes,⁴⁴ and (iii) astrocytosis is an early disease feature of AD,⁴⁵ we used a series of mediation and path analyses to test our hypothesis that CVD gives rise to tau pathology and ultimately neurodegeneration via astrocytosis across different AD disease stages in adults with DS.

Methods

Participants and participant diagnosis. Participants came from the Alzheimer Biomarkers Consortium – Down Syndrome (ABC-DS), a multisite, observational study designed to examine biomarker, clinical, and genetic correlates of and contributors to AD among adults with DS.⁴⁶ The sample included individuals from the Neurodegeneration in Aging Down Syndrome (NiAD; U01 AG051406) and Biomarkers of Alzheimer’s Disease in Adults with Down Syndrome (ADDS; U01 AG051412), both of which are now contained within ABC-DS. For the current study, participants with available MRI data and derived plasma biomarkers of interest were selected for analysis. One hundred thirty-eight participants characterized as cognitively stable, 24 patients with mild cognitive impairment (MCI), 16 patients with AD dementia (DS-AD), and 8 with diagnoses that were “unable to be determined” were included. Diagnoses were based on a consensus conference that reviewed available neuropsychological and clinical data, as described

previously in detail.⁴⁶ In short, clinical experts in the assessment and diagnosis of AD in DS performed a standardized clinical evaluation of each participant, which considered functional abilities and health history. Participants were then assigned one of four AD-related diagnoses (i.e., cognitively stable, MCI, DS-AD, unable to be determined). This study was conducted in accordance with the institutional review boards of participating institutions and written informed consent was obtained from each participant or their legal guardian or legally authorized representative.

Magnetic resonance imaging. MRI scans were acquired at ADDS and NiAD participating sites. NiAD sites acquired 2D T2-weighted fluid-attenuated inversion recovery (FLAIR) scan (repetition time [TR]/ echo time [TE]/ inversion time [TI] = 5,000/386/1,800 milliseconds, voxel size = $0.4 \times 0.4 \times 0.9\text{mm}^3$) and ADDS sites acquired 3D T2-weighted FLAIR scan (TR/TE/ TI = 4,800/119/1,473 milliseconds, voxel size = $0.9 \times 0.9 \times 0.5\text{mm}^3$).

White matter hyperintensity volume was quantitated with in-house software. Briefly, FLAIR images were reconstructed to a uniform matrix of $256 \times 256 \times 256$ with a voxel size of 1mm^3 . The images were reoriented to standard anatomical space (MNI152), skull stripped, and bias field corrected.^{47,48} The images were processed through a customized module designed to extract percentile thresholds from the intensity histogram of each image automatically.^{49,50} Next, a white matter segment was created using the convolutional neural networks tool.⁵¹ Two specific percentile thresholds were computed: one for the transition between dark and bright voxels intensity, and another for the transition between bright and brightest voxels intensity. These thresholds initialized a Gaussian mixture model (GMM) and expectation-maximization algorithm⁵² within the white matter segment of the FLAIR images, using two components to represent hyperintense and non-hyperintense voxels.

Following the computation of percentile thresholds, we calculated the inter-percentile range (IPR) between these values and introduced a relaxed threshold of 10 to account for variations in FLAIR image quality. This adjustment was made by applying a multiplicative factor to the IPR.

Finally, probability distribution maps were generated to represent the segmented WMH within the FLAIR images. The Roberts edge detection function⁵³ was applied to the probability distribution maps, ensuring the removal of any non-white matter voxels from the brain's contour. The labeled voxels were added together and multiplied by voxel dimensions to calculate total WMH volume in cm³. **Figure 1** displays the voxel-wise frequencies of WMH across all participants.

Plasma samples and analysis. Plasma A β 42, A β 40, p-tau217, NfL, and GFAP concentrations were derived for each participant from plasma samples as previously described.⁴⁰ Plasma samples were shipped to the University of North Texas where A β 42, A β 40, and NfL concentrations were quantified with single molecule array (Simoa) assays (Quanterix). We calculated the ratio of A β 42 to A β 40 as the biomarker for amyloid pathology.⁵⁴ Plasma samples from the same group of participants were shipped to Lund University for quantification of p-tau217 and GFAP concentrations. The p-tau217 concentration was assayed according to the published protocols using immunoassay on a Mesoscale Discovery platform developed by Lilly Research Laboratories as previously described.^{41,55} GFAP concentration was quantified using Simoa assays (Quanterix). We calculated age-residualized values for NfL concentration values, our primary dependent variable, because the pathophysiological progression of AD among individuals with DS is strongly age-dependent.^{1,2} This age-dependency may induce epiphenomenological relationships among AD-related variables when conducting cross-sectional

analyses due to their shared association with age. On the other hand, statistical adjustment for age may obscure important associations among factors whose variance is strongly age dependent. Therefore, we chose to operationalize neurodegeneration as age-residualized NfL in the subsequent analyses.

Statistical Analysis

Association of biomarkers with neurodegeneration. We examined the association of WMH and each ADRD biomarker concentration with age-residualized NfL in the entire sample and stratified by diagnosis with bivariate Pearson correlations. Participants with an undetermined diagnosis were not included in any analyses stratified by diagnosis.

Mediation analyses. We conducted a series of causal mediation analyses in the entire sample of the observed bivariate associations. We used the ‘mediation’ package in R⁵⁶ to examine whether 1) GFAP mediates the relationship between WMH volume and p-tau217 concentration, 2) whether p-tau217 concentration mediates the relationship between WMH volume and NfL concentration, and 3) whether p-tau217 concentration mediates the relationship between GFAP and NfL concentrations. To probe directionality, we ran models in which the hypothesized predictor and mediator were switched. The average causal mediation effect (ACME), the portion of the direct effect on the outcome that is attributable to the mediator’s effect, and the corresponding p-value were extracted from each mediation model.

Path analysis. We tested our *a priori* hypothesis of pathophysiological cascade that is initiated by CVD with a path analysis in the combined sample and in groups stratified by AD-related diagnosis. The path analysis tested the effect of WMH on downstream neurodegeneration (i.e., age-residualized NfL concentrations) via GFAP and p-tau217. The paths were estimated using

the ‘lavaan’ package in R,⁵⁷ which established the direct and indirect effects between biomarkers and the model was fit using the sem() function. All analyses were adjusted for research site.

Results

Sample characteristics across diagnostic groups are reported in **Table 1**. Cognitively stable participants and those with an undetermined diagnostic status were younger than those with MCI and DS-AD and a lower proportion of women were diagnosed with MCI than other groups.

There were no differences in reported history of hypertension, hypotension, type 1 or 2 diabetes, or hypercholesterolemia (**Table 1**).

We confirmed strong associations between age and AD biomarker concentrations, apart from A β 42/40: GFAP: $r=0.612$ [0.513, 0.695], $p<0.0001$; NfL: $r=0.523$ [0.409, 0.62], $p<0.0001$; p-tau217: $r=0.379$ [0.248, 0.496], $p<0.0001$; A β 42/40: $r=0.107$ [-0.036, 0.248], $p=0.147$.

Associations of plasma biomarkers and WMH with age-residualized NfL concentration across diagnostic groups. **Table 2** displays the associations of plasma biomarkers and WMH volume with age-residualized NfL concentration. WMH volume, GFAP concentration, and p-tau217 concentration were positively associated with age-residualized NfL in the entire sample. In cognitively stable participants, neither WMH volume nor plasma AD biomarker concentrations were associated with age-residualized NfL levels, likely reflecting the limited amount of variance in these factors at this disease stage. Among those with MCI, increased WMH volume was associated with higher age-residualized NfL, while increased GFAP concentration and p-tau217 concentration was associated with higher age-residualized NfL in participants with MCI and AD.

Mediation analyses. Three results emerged from the statistical mediation analyses. First, p-tau217 concentration mediated the relationship between WMH and age-residualized NfL concentration (ACME[CI]=0.44 [0.17, 0.83], $p<0.0001$). When we reversed the independent variable and mediator variable and re-ran the analyses, WMH did not mediate an association between p-tau217 concentration and NfL (ACME[CI]=0.88 [-0.66, 2.50], $p=0.22$). Second, GFAP concentration mediated the relationship between WMH and p-tau217 concentration (ACME[CI]=0.0201 [0.01, 0.02], $p<0.001$); the reverse model revealed a congruent mediation effect of WMH, albeit to a lesser extent, on the relationship between GFAP and p-tau217 (ACME[CI]=0.0003 [0.0001, 0.0002], $p<0.001$). Third, p-tau217 concentration mediated the relationship between GFAP concentration and age-residualized NfL concentration (ACME[CI]=0.04 [0.01, 0.05], $p<0.0001$). When reversed, GFAP did not mediate an association between p-tau217 concentration and NfL (ACME[CI]=-0.80 [-2.96, 2.66], $p=0.67$). A *post-hoc* analysis revealed an interaction between WMH and GFAP on p-tau217 concentration, such that WMH was most strongly associated with p-tau217 in the presence of elevated GFAP while GFAP was most strongly associated with p-tau217 in individuals with high WMH volume (see **Figure 2**).

Path analysis. Informed by the relationships observed in the mediation analyses, we conducted a path analysis to examine statistical causality within our hypothesized pathophysiological cascade in the entire sample and stratified by diagnosis. In the entire sample (**Figure 3A**), the analysis revealed a cascade initiated by WMH, which had a direct and an indirect effect through GFAP on p-tau217 concentration. P-tau217 concentration, in turn, was associated with age-residualized NfL concentration. In this combined sample, increasing p-tau217 concentration was primarily attributable to increasing WMH volume, while increases in NfL were mainly related to

increasing p-tau217 concentration. Among cognitively stable participants (**Figure 3B**), there was a direct and indirect effect through GFAP of WMH on p-tau217 concentration, but p-tau217 concentration was not associated with NfL concentration. No AD biomarkers were associated with age-residualized NfL concentrations among cognitively stable participants, likely due to low variance in neurodegeneration at this disease stage. Among those with MCI (**Figure 3C**), increased WMH volume had a direct effect on p-tau217 and NfL concentrations but not GFAP concentration. GFAP concentration had an indirect effect on NfL concentration through p-tau217. Finally, in those diagnosed with dementia (**Figure 3D**), there were no direct or indirect effects of WMH on plasma AD biomarker concentrations. Still, GFAP continued to have a positive indirect effect on NfL through p-tau217 concentration.

Discussion

Our findings suggest that among adults with DS, CVD promotes AD-related neurodegeneration indirectly through increasing astrocytosis and tau pathophysiology in the preclinical stages of the AD and directly and indirectly in the clinical stages of AD. These results support our hypothesis that WMH may initially promote increases in inflammation and tau pathophysiology, giving rise to downstream neurodegeneration.

Pathogenic models of AD emphasize a precipitating role of A β that leads to tau pathology and subsequent neurodegeneration;⁶ however, we found that tau pathology did not appear to exert a direct effect on neurodegeneration until elevated by both cerebrovascular disease and astrocytosis. *Post-hoc* analyses revealed an interaction between GFAP and WMH in promoting AD pathophysiology and downstream neurodegeneration, suggesting synergy between vascular and inflammatory processes in this pathophysiological cascade.

Our findings are consistent with our previous study, which showed more consistent associations between peripheral proteomic markers of inflammation and MRI markers of cerebrovascular disease in presymptomatic phases of AD among adults with DS.³² Further, postmortem data revealed a unique inflammatory profile in adults with DS and inflammatory proteins related to astrocytosis were elevated in the early stages of AD.⁵⁸ Adults with DS also show evidence of blood-brain barrier (BBB) disruption at autopsy.⁵⁹ Individuals with DS may be genetically predisposed to BBB disruption, which may promote the cerebrovascular lesions observed on MRI.⁶⁰ Additionally, in mouse models of AD, white matter abnormalities, including those due to hypoperfusion,¹² promote AD pathology^{61,62} and astrocytosis is an early event in AD in both humans and mouse models.⁴⁵ Therefore, it is possible that BBB disruption gives rise to cerebrovascular lesions, which has a subsequent impact on astrocytosis, downstream tau accumulation, and neurodegeneration.

White matter hyperintensities are generally considered to reflect “end organ” ischemic damage due to chronic exposure to vascular risk factors.⁶³ In the context of AD, however, the etiology of WMH has been widely debated.⁶³ Some argue that in AD WMH are attributable primarily to cerebral amyloid angiopathy (CAA).⁶⁴ Others argue that WMH are the *result* of AD-related neurodegeneration, so called Wallerian degeneration.^{65,66} We have argued against some of these pathways on the basis of temporality, experimental evidence, and anatomical distribution.⁶⁷ The results of this study provide further evidence against these possibilities. First, as noted, adults with DS have minimal vascular risk factors; for example, only 2% of participants had a history of hypertension. Nonetheless, WMH are observed across every disease stage. Second, in *post hoc* analyses we did not observe an association between WMH volume and number of cerebral microbleeds ($r=-0.043$ [-0.226, 0.143], $p=0.649$), a radiological marker of CAA.^{19,68} This

observation is consistent with our finding that cerebral microbleeds only modestly mediate an association between autosomal dominant mutations for AD and increased WMH volume.⁶⁹

Finally, our statistical modeling suggests that WMH precede or are upstream from tau pathophysiology and neurodegeneration markers. Animal stroke models show evidence of increased GFAP positive astrocytes observed around the lesion days after vessel occlusion, specifically in models of small vessel and white matter stroke^{70,71} and white matter hypoperfusion increases tau hyperphosphorylation in mouse models.¹² Taken together, we speculate that there is an endogenous cerebrovascular component to AD pathogenesis that likely is not associated with amyloid and tau pathology but instead interacts with inflammatory processes to promote tauopathy and subsequent neurodegeneration.

Notably, we did not find any association between plasma A β concentration and WMH volume or NfL concentration. This finding was unexpected, given the well-documented overproduction of A β in individuals with DS.¹ However, plasma A β concentrations remain steady across the adult lifespan in adults with DS after about age 30 years⁷² and may have plateaued in most participants prior to enrollment. Therefore, the lack of dynamic range in A β concentrations may have yielded null results despite the importance of the amyloid pathology. Additionally, plasma amyloid measures may not capture brain-related amyloid pathology with as high fidelity as the other plasma AD biomarkers.^{73,74}

Conclusions

Our study provides evidence of a pathophysiological cascade reflecting a progression of AD pathology in adults with DS initiated by vascular pathology and suggests that cerebrovascular disease and inflammation play a key role and early in AD-related neurodegeneration in adults with DS. As these individuals do not have the same vascular risk factors as the neurotypical

population, our study suggests an endogenous vascular component implicated in the progression of AD in DS. The associations between cerebrovascular disease and AD plasma biomarkers in this study indicate that abnormal vascular pathology is a core disease feature and could be a critical treatment target for the DS population.

Acknowledgements

The Alzheimer's Biomarkers Consortium–Down Syndrome (ABC-DS) is funded by the National Institute on Aging and the National Institute for Child Health and Human Development (U01 AG051406, U01 AG051412, U19 AG068054). The work contained in this publication was also supported through the following National Institutes of Health Programs: The Alzheimer's Disease Research Centers Program (P50 AG008702, P30 AG062421, P50 AG16537, P50 AG005133, P50 AG005681, P30 AG062715, and P30 AG066519), the Eunice Kennedy Shriver Intellectual and Developmental Disabilities Research Centers Program (U54 HD090256, U54 HD087011, and P50 HD105353), the National Center for Advancing Translational Sciences (UL1 TR001873, UL1 TR002373, UL1 TR001414, UL1 TR001857, UL1 TR002345), the National Centralized Repository for Alzheimer Disease and Related Dementias (U24 AG21886), and DS-Connect® (The Down Syndrome Registry) supported by the Eunice Kennedy Shriver National Institute of Child Health and Human Development (NICHD). In Cambridge, UK this research was supported by the NIHR Cambridge Biomedical Research Centre and the Windsor Research Unit, CPFT, Fulbourn Hospital Cambridge, UK.

The authors are grateful to the ABC-DS study participants, their families and care providers, and the ABC-DS research and support staff for their contributions to this study. This manuscript has been reviewed by ABC-DS investigators for scientific content and consistency of data

interpretation with previous ABC-DS study publications. The content is solely the responsibility of the authors and does not necessarily represent the official views of the NIH, the CPFT, the NIHR or the UK Department of Health and Social Care

Funding

This work was supported by US National Institutes of Health grants RF1 AG079519, U19 AG068054, U01 AG051412, and U01 AG051406.

Author Contributions

Concept and design: NCE, AMB

Analysis, acquisition, and interpretation of data: NCE, PJL, MJA, MEP, SO, LFA, DLT, OH, BTC, EH, AMB

Statistical analysis: NCE, PJL, AMB

Drafting of the manuscript: NCE, AMB

Critical revision of the manuscript: NCE, PJL, MJA, OME, BR, MEP, SO, LFA, SS, MM, DLT, SJ, OH, BLH, BTC, JHL, FL, HDR, SZ, ITL, MAY, JC, DMW, EH, AMB

#Alzheimer's Biomarker Consortium- Down Syndrome (ABC-DS) Investigators: Howard J.

Aizenstein, MD PhD; Beau M. Ances, MD PhD; Howard F. Andrews, PhD; Karen Bell, MD;

Rasmus M. Birn, PhD; Adam M. Brickman, PhD; Peter Bulova, MD; Amrita Cheema, PhD;

Kewei Chen, PhD; Bradley T. Christian, PhD; Isabel Clare, PhD; Ann D. Cohen, PhD; John N.

Constantino, MD; Eric W. Doran, MS; Natalie C. Edwards, BS; Anne Fagan, PhD; Eleanor

Feingold, PhD; Tatiana M. Foroud, PhD; Benjamin L. Handen, PhD; Jordan Harp, PhD; Sigal L. Hartley, PhD; Elizabeth Head, PhD; Rachel Henson, MS; Christy Hom, PhD; Lawrence Honig, MD; Milos D. Ikonovic, MD; Sterling C Johnson, PhD; Courtney Jordan, RN; M. Ilyas Kamboh, PhD; David Keator, PhD; William E. Klunk, MD PhD; Julia K. Kofler, MD; William Charles Kreisler, MD; Sharon J. Krinsky-McHale, PhD; Florence Lai, MD; Patrick Lao, PhD; Charles Laymon, PhD; Joseph H. Lee, DrPH; Ira T. Lott, MD; Victoria Lupson, PhD; Mark Mapstone, PhD; Chester A. Mathis, PhD; Davneet Singh Minhas, PhD; Neelesh Nadkarni, MD; Sid O'Bryant, PhD; Melissa Parisi, MD PhD; Deborah Pang, MPH; Melissa Petersen, PhD; Julie C. Price, PhD; Margaret Pulsifer, PhD; Michael S. Rafii, MD PhD, Eric Reiman, MD; Batool Rizvi, MS; Herminia Diana Rosas, MD; Laurie Ryan, PhD; Frederick Schmitt, PhD; Nicole Schupf, PhD; Wayne P. Silverman, PhD; Dana L. Tudorascu, PhD; Rameshwari Tumuluru, MD; Benjamin Tycko, MD PhD; Badri Varadarajan, PhD; Desiree A. White, PhD; Michael A. Yassa, PhD; Shahid Zaman, MD PhD; Fan Zhang, PhD.

References

1. Head E, Lott IT. Down syndrome and beta-amyloid deposition. *Curr Opin Neurol*. Apr 2004;17(2):95-100. doi:10.1097/00019052-200404000-00003
2. Lott IT, Head E. Dementia in Down syndrome: unique insights for Alzheimer disease research. *Nat Rev Neurol*. Mar 2019;15(3):135-147. doi:10.1038/s41582-018-0132-6
3. de Graaf G, Buckley F, Skotko BG. Estimation of the number of people with Down syndrome in the United States. *Genet Med*. Apr 2017;19(4):439-447. doi:10.1038/gim.2016.127
4. NIA-AA Revised Criteria for Diagnosis and Staging of Alzheimer's Disease. 2023:38. Oct 9 2023. https://alz.org/media/Documents/scientific-conferences/NIA-AA-Clinical-Criteria-for-Staging-and-Diagnosis-for-Public-Comment-Draft-2.pdf?_gl=1*_1ce7pa6*_ga*MTc0NzUyMzI0LjE2OTQxMTQzNDQ.*_ga_QSFTKCEH7C*MTY5NzU2ODc4OS4yLjEuMTY5NzU2ODg0NS40LjAuMA..*_ga_9JTEWVX24V*MTY5NzU2ODc4OS4yLjEuMTY5NzU2ODg0NS40LjAuMA..
5. Patterson D, Gardiner K, Kao FT, Tanzi R, Watkins P, Gusella JF. Mapping of the gene encoding the beta-amyloid precursor protein and its relationship to the Down syndrome region of chromosome 21. *Proc Natl Acad Sci U S A*. Nov 1988;85(21):8266-70. doi:10.1073/pnas.85.21.8266
6. Jack CR, Jr., Knopman DS, Jagust WJ, et al. Hypothetical model of dynamic biomarkers of the Alzheimer's pathological cascade. *Lancet Neurol*. Jan 2010;9(1):119-28. doi:10.1016/s1474-4422(09)70299-6
7. Bateman RJ, Xiong C, Benzinger TL, et al. Clinical and biomarker changes in dominantly inherited Alzheimer's disease. *N Engl J Med*. Aug 30 2012;367(9):795-804. doi:10.1056/NEJMoa1202753
8. Hampel H, Cummings J, Blennow K, Gao P, Jack CR, Jr., Vergallo A. Developing the ATX(N) classification for use across the Alzheimer disease continuum. *Nat Rev Neurol*. Sep 2021;17(9):580-589. doi:10.1038/s41582-021-00520-w
9. Barnes DE, Yaffe K. The projected effect of risk factor reduction on Alzheimer's disease prevalence. *Lancet Neurol*. Sep 2011;10(9):819-28. doi:10.1016/s1474-4422(11)70072-2
10. Schneider JA, Wilson RS, Bienias JL, Evans DA, Bennett DA. Cerebral infarctions and the likelihood of dementia from Alzheimer disease pathology. *Neurology*. 2004;62(7):1148-1155. doi:10.1212/01.Wnl.0000118211.78503.F5
11. Rizvi B, Lao PJ, Chesebro AG, et al. Association of Regional White Matter Hyperintensities With Longitudinal Alzheimer-Like Pattern of Neurodegeneration in Older Adults. *JAMA Netw Open*. Oct 1 2021;4(10):e2125166. doi:10.1001/jamanetworkopen.2021.25166
12. Laing KK, Simoes S, Baena-Caldas GP, et al. Cerebrovascular disease promotes tau pathology in Alzheimer's disease. *Brain Commun*. 2020;2(2):fcaa132. doi:10.1093/braincomms/fcaa132
13. Lee S, Viqar F, Zimmerman ME, et al. White matter hyperintensities are a core feature of Alzheimer's disease: Evidence from the dominantly inherited Alzheimer network. *Ann Neurol*. Jun 2016;79(6):929-39. doi:10.1002/ana.24647

14. Brickman AM, Schupf N, Manly JJ, et al. APOE ϵ 4 and risk for Alzheimer's disease: do regionally distributed white matter hyperintensities play a role? *Alzheimers Dement*. Nov 2014;10(6):619-29. doi:10.1016/j.jalz.2014.07.155
15. Schoemaker D, Zanon Zotin MC, Chen K, et al. White matter hyperintensities are a prominent feature of autosomal dominant Alzheimer's disease that emerge prior to dementia. *Alzheimers Res Ther*. Jun 29 2022;14(1):89. doi:10.1186/s13195-022-01030-7
16. Murdoch JC, Rodger JC, Rao SS, Fletcher CD, Dunnigan MG. Down's syndrome: an atheroma-free model? *Br Med J*. Jul 23 1977;2(6081):226-8. doi:10.1136/bmj.2.6081.226
17. Pucci F, Machado G, Solera E, et al. Blood pressure levels and body mass index in Brazilian adults with Down syndrome. *Sao Paulo Med J*. Jul-Aug 2016;134(4):330-4. doi:10.1590/1516-3180.2016.0057180316
18. Kapell D, Nightingale B, Rodriguez A, Lee JH, Zigman WB, Schupf N. Prevalence of chronic medical conditions in adults with mental retardation: comparison with the general population. *Ment Retard*. Aug 1998;36(4):269-79. doi:10.1352/0047-6765(1998)036<0269:Pocmci>2.0.Co;2
19. Lao PJ, Gutierrez J, Keator D, et al. Alzheimer-Related Cerebrovascular Disease in Down Syndrome. *Ann Neurol*. Dec 2020;88(6):1165-1177. doi:10.1002/ana.25905
20. Raz L, Bhaskar K, Weaver J, et al. Hypoxia promotes tau hyperphosphorylation with associated neuropathology in vascular dysfunction. *Neurobiol Dis*. Jun 2019;126:124-136. doi:10.1016/j.nbd.2018.07.009
21. Hedden T, Mormino EC, Amariglio RE, et al. Cognitive profile of amyloid burden and white matter hyperintensities in cognitively normal older adults. *J Neurosci*. Nov 14 2012;32(46):16233-42. doi:10.1523/jneurosci.2462-12.2012
22. Grimmer T, Faust M, Auer F, et al. White matter hyperintensities predict amyloid increase in Alzheimer's disease. *Neurobiol Aging*. Dec 2012;33(12):2766-73. doi:10.1016/j.neurobiolaging.2012.01.016
23. Navarro V, Sanchez-Mejias E, Jimenez S, et al. Microglia in Alzheimer's Disease: Activated, Dysfunctional or Degenerative. *Front Aging Neurosci*. 2018;10:140. doi:10.3389/fnagi.2018.00140
24. Heppner FL, Ransohoff RM, Becher B. Immune attack: the role of inflammation in Alzheimer disease. *Nat Rev Neurosci*. Jun 2015;16(6):358-72. doi:10.1038/nrn3880
25. Paasila PJ, Davies DS, Kril JJ, Goldsbury C, Sutherland GT. The relationship between the morphological subtypes of microglia and Alzheimer's disease neuropathology. *Brain Pathol*. Nov 2019;29(6):726-740. doi:10.1111/bpa.12717
26. Ransohoff RM. How neuroinflammation contributes to neurodegeneration. *Science*. Aug 19 2016;353(6301):777-83. doi:10.1126/science.aag2590
27. Heneka MT, Carson MJ, El Khoury J, et al. Neuroinflammation in Alzheimer's disease. *Lancet Neurol*. Apr 2015;14(4):388-405. doi:10.1016/s1474-4422(15)70016-5
28. Calsolaro V, Edison P. Neuroinflammation in Alzheimer's disease: Current evidence and future directions. *Alzheimers Dement*. Jun 2016;12(6):719-32. doi:10.1016/j.jalz.2016.02.010
29. Cuello AC. Early and Late CNS Inflammation in Alzheimer's Disease: Two Extremes of a Continuum? *Trends Pharmacol Sci*. Nov 2017;38(11):956-966. doi:10.1016/j.tips.2017.07.005

30. Rubio-Perez JM, Morillas-Ruiz JM. A review: inflammatory process in Alzheimer's disease, role of cytokines. *ScientificWorldJournal*. 2012;2012:756357. doi:10.1100/2012/756357
31. Grammas P. Neurovascular dysfunction, inflammation and endothelial activation: Implications for the pathogenesis of Alzheimer's disease. *Journal of Neuroinflammation*. 2011/03/25 2011;8(1):26. doi:10.1186/1742-2094-8-26
32. Moni F, Petersen ME, Zhang F, et al. Probing the proteome to explore potential correlates of increased Alzheimer's-related cerebrovascular disease in adults with Down syndrome. *Alzheimers Dement*. Oct 2022;18(10):1744-1753. doi:10.1002/alz.12627
33. Ishiki A, Kamada M, Kawamura Y, et al. Glial fibrillar acidic protein in the cerebrospinal fluid of Alzheimer's disease, dementia with Lewy bodies, and frontotemporal lobar degeneration. *J Neurochem*. Jan 2016;136(2):258-61. doi:10.1111/jnc.13399
34. Oeckl P, Halbgebauer S, Anderl-Straub S, et al. Glial Fibrillary Acidic Protein in Serum is Increased in Alzheimer's Disease and Correlates with Cognitive Impairment. *J Alzheimers Dis*. 2019;67(2):481-488. doi:10.3233/jad-180325
35. Chatterjee P, Pedrini S, Stoops E, et al. Plasma glial fibrillary acidic protein is elevated in cognitively normal older adults at risk of Alzheimer's disease. *Transl Psychiatry*. Jan 11 2021;11(1):27. doi:10.1038/s41398-020-01137-1
36. Carter SF, Schöll M, Almkvist O, et al. Evidence for astrocytosis in prodromal Alzheimer disease provided by 11C-deuterium-L-deprenyl: a multitracers PET paradigm combining 11C-Pittsburgh compound B and 18F-FDG. *J Nucl Med*. Jan 2012;53(1):37-46. doi:10.2967/jnumed.110.087031
37. Pereira JB, Janelidze S, Smith R, et al. Plasma GFAP is an early marker of amyloid- β but not tau pathology in Alzheimer's disease. *Brain*. Dec 16 2021;144(11):3505-3516. doi:10.1093/brain/awab223
38. Bellaver B, Povala G, Ferreira PCL, et al. Astrocyte reactivity influences amyloid- β effects on tau pathology in preclinical Alzheimer's disease. *Nature Medicine*. 2023/07/01 2023;29(7):1775-1781. doi:10.1038/s41591-023-02380-x
39. Montoliu-Gaya L, Alcolea D, Ashton NJ, et al. Plasma and cerebrospinal fluid glial fibrillary acidic protein levels in adults with Down syndrome: a longitudinal cohort study. *EBioMedicine*. Apr 2023;90:104547. doi:10.1016/j.ebiom.2023.104547
40. Carmona-Iragui M, Alcolea D, Barroeta I, et al. Diagnostic and prognostic performance and longitudinal changes in plasma neurofilament light chain concentrations in adults with Down syndrome: a cohort study. *Lancet Neurol*. Aug 2021;20(8):605-614. doi:10.1016/s1474-4422(21)00129-0
41. Janelidze S, Christian BT, Price J, et al. Detection of Brain Tau Pathology in Down Syndrome Using Plasma Biomarkers. *JAMA Neurology*. 2022;79(8):797-807. doi:10.1001/jamaneurol.2022.1740
42. McConnell HL, Li Z, Woltjer RL, Mishra A. Astrocyte dysfunction and neurovascular impairment in neurological disorders: Correlation or causation? *Neurochem Int*. Sep 2019;128:70-84. doi:10.1016/j.neuint.2019.04.005
43. Thalman S, Van Pelt KL, Lin AL, et al. A preliminary study of cerebral blood flow, aging and dementia in people with Down syndrome. *J Intellect Disabil Res*. Dec 2020;64(12):934-945. doi:10.1111/jir.12784

44. Liu Q, Bhuiyan MIH, Liu R, et al. Attenuating vascular stenosis-induced astrogliosis preserves white matter integrity and cognitive function. *Journal of Neuroinflammation*. 2021/08/28 2021;18(1):187. doi:10.1186/s12974-021-02234-8
45. Rodriguez-Vieitez E, Ni R, Gulyás B, et al. Astrocytosis precedes amyloid plaque deposition in Alzheimer APPswe transgenic mouse brain: a correlative positron emission tomography and in vitro imaging study. *Eur J Nucl Med Mol Imaging*. Jun 2015;42(7):1119-32. doi:10.1007/s00259-015-3047-0
46. Handen BL, Lott IT, Christian BT, et al. The Alzheimer's Biomarker Consortium-Down Syndrome: Rationale and methodology. *Alzheimers Dement (Amst)*. 2020;12(1):e12065. doi:10.1002/dad2.12065
47. Hoopes A, Mora JS, Dalca AV, Fischl B, Hoffmann M. SynthStrip: skull-stripping for any brain image. *Neuroimage*. Oct 15 2022;260:119474. doi:10.1016/j.neuroimage.2022.119474
48. Sled JG, Zijdenbos AP, Evans AC. A nonparametric method for automatic correction of intensity nonuniformity in MRI data. *IEEE Trans Med Imaging*. Feb 1998;17(1):87-97. doi:10.1109/42.668698
49. Huff DT, Ferjancic P, Namías M, Emamekhoo H, Perlman SB, Jeraj R. Image intensity histograms as imaging biomarkers: application to immune-related colitis. *Biomed Phys Eng Express*. Sep 30 2021;7(6)doi:10.1088/2057-1976/ac27c3
50. Huang J, Huang A, Guerra BC, Yu Y-Y. Percentmatch: percentile-based dynamic thresholding for multi-label semi-supervised classification. *arXiv preprint arXiv:220813946*. 2022;
51. Billot B, Greve DN, Puonti O, et al. SynthSeg: Segmentation of brain MRI scans of any contrast and resolution without retraining. *Med Image Anal*. May 2023;86:102789. doi:10.1016/j.media.2023.102789
52. Qiao J, Cai X, Xiao Q, et al. Data on MRI brain lesion segmentation using K-means and Gaussian Mixture Model-Expectation Maximization. *Data Brief*. Dec 2019;27:104628. doi:10.1016/j.dib.2019.104628
53. Roberts L. Machine perception of three-dimensional solids. *MIT Press, Cambridge, MA*. 1965;(Optical and Electro-Optical Information Processing):159-197.
54. Fandos N, Pérez-Grijalba V, Pesini P, et al. Plasma amyloid β 42/40 ratios as biomarkers for amyloid β cerebral deposition in cognitively normal individuals. *Alzheimers Dement (Amst)*. 2017;8:179-187. doi:10.1016/j.dadm.2017.07.004
55. Palmqvist S, Janelidze S, Quiroz YT, et al. Discriminative Accuracy of Plasma Phospho-tau217 for Alzheimer Disease vs Other Neurodegenerative Disorders. *Jama*. Aug 25 2020;324(8):772-781. doi:10.1001/jama.2020.12134
56. Tingley D, Yamamoto T, Hirose K, Keele L, Imai K. mediation: R Package for Causal Mediation Analysis. *Journal of Statistical Software*. 09/02 2014;59(5):1 - 38. doi:10.18637/jss.v059.i05
57. Rosseel Y. lavaan: An R Package for Structural Equation Modeling. *Journal of Statistical Software*. 05/24 2012;48(2):1 - 36. doi:10.18637/jss.v048.i02
58. Flores-Aguilar L, Iulita MF, Kovacs O, et al. Evolution of neuroinflammation across the lifespan of individuals with Down syndrome. *Brain*. 2020;143(12):3653-3671. doi:10.1093/brain/awaa326

59. Flores-Aguilar L, Du A, Kofler J, Lai F, Ikonovic MD, Brickman AM, Head E. Blood-brain barrier neuropathology in individuals with Down syndrome and Alzheimer's disease. presented at: Alzheimers Association International Conference 2023; Amsterdam, NL.
<https://alz.confex.com/alz/2023/meetingapp.cgi/Paper/79447>
60. Hainsworth AH, Minett T, Andoh J, et al. Neuropathology of White Matter Lesions, Blood-Brain Barrier Dysfunction, and Dementia. *Stroke*. Oct 2017;48(10):2799-2804. doi:10.1161/strokeaha.117.018101
61. Desai MK, Mastrangelo MA, Ryan DA, Sudol KL, Narrow WC, Bowers WJ. Early oligodendrocyte/myelin pathology in Alzheimer's disease mice constitutes a novel therapeutic target. *Am J Pathol*. Sep 2010;177(3):1422-35. doi:10.2353/ajpath.2010.100087
62. Nasrabad SE, Rizvi B, Goldman JE, Brickman AM. White matter changes in Alzheimer's disease: a focus on myelin and oligodendrocytes. *Acta Neuropathol Commun*. Mar 2018;6(1):22. doi:10.1186/s40478-018-0515-3
63. Wardlaw JM, Hernández MCV, Muñoz-Maniega S. What are White Matter Hyperintensities Made of? *Journal of the American Heart Association*. 2015;4(6):e001140. doi:10.1161/JAHA.114.001140
64. Shirzadi Z, Schultz SA, Yau W-YW, et al. Etiology of White Matter Hyperintensities in Autosomal Dominant and Sporadic Alzheimer Disease. *JAMA Neurology*. 2023;doi:10.1001/jamaneurol.2023.3618
65. Brun A, Englund E. A white matter disorder in dementia of the Alzheimer type: A pathoanatomical study. *Annals of Neurology*. 1986;19(3):253-262. doi:<https://doi.org/10.1002/ana.410190306>
66. Garnier-Crussard A, Cotton F, Krolak-Salmon P, Chételat G. White matter hyperintensities in Alzheimer's disease: Beyond vascular contribution. *Alzheimer's & Dementia*. 2023;19(8):3738-3748. doi:<https://doi.org/10.1002/alz.13057>
67. Brickman AM, Rizvi B. White matter hyperintensities and Alzheimer's disease: An alternative view of an alternative hypothesis. *Alzheimers Dement*. Sep 2023;19(9):4260-4261. doi:10.1002/alz.13371
68. Viswanathan A, Greenberg SM. Cerebral amyloid angiopathy in the elderly. *Annals of Neurology*. 2011;70(6):871-880. doi:<https://doi.org/10.1002/ana.22516>
69. Lee S, Zimmerman ME, Narkhede A, et al. White matter hyperintensities and the mediating role of cerebral amyloid angiopathy in dominantly-inherited Alzheimer's disease. *PLoS One*. 2018;13(5):e0195838. doi:10.1371/journal.pone.0195838
70. Hua R, Walz W. The need for animal models in small-vessel brain disease. *Crit Rev Neurobiol*. 2006;18(1-2):5-11. doi:10.1615/critrevneurobiol.v18.i1-2.20
71. Sozmen EG, Kolekar A, Havton LA, Carmichael ST. A white matter stroke model in the mouse: axonal damage, progenitor responses and MRI correlates. *J Neurosci Methods*. Jun 15 2009;180(2):261-72. doi:10.1016/j.jneumeth.2009.03.017
72. Mengel D, Liu W, Glynn RJ, et al. Dynamics of plasma biomarkers in Down syndrome: the relative levels of A β 42 decrease with age, whereas NT1 tau and NfL increase. *Alzheimers Res Ther*. Mar 19 2020;12(1):27. doi:10.1186/s13195-020-00593-7
73. Koyama A, Okereke OI, Yang T, Blacker D, Selkoe DJ, Grodstein F. Plasma amyloid- β as a predictor of dementia and cognitive decline: a systematic review and meta-analysis. *Arch Neurol*. Jul 2012;69(7):824-31. doi:10.1001/archneurol.2011.1841

74. Janelidze S, Teunissen CE, Zetterberg H, et al. Head-to-Head Comparison of 8 Plasma Amyloid- β 42/40 Assays in Alzheimer Disease. *JAMA Neurology*. 2021;78(11):1375-1382. doi:10.1001/jamaneurol.2021.3180

Table 1. Sample characteristics by diagnostic group

APOE: apolipoprotein E, *MCI*: mild cognitive impairment.

	Cognitively Stable	MCI	Dementia	Undetermined	Whole Sample	Test Statistic	p-value
<i>n</i>	137	24	16	8	185		
<i>Demographic</i>							
<i>Age, mean (SD) years</i>	43 (9.1)	51 (5.8)	54.5 (6)	48.4 (8.8)	45.2 (9.3)	$F = 27.05$	<0.001
<i>Women, n (%)</i>	64 (47)	4 (17)	9 (56)	4 (50)	81 (44)	$\chi^2 = 8.7$	0.003
<i>Vascular risk factors</i>							
<i>Hypertension, n (%)</i>	3 (2)	0 (0)	0 (0)	0 (0)	3 (2)	$F = 0.9$	0.08
<i>Hypotension, n (%)</i>	3 (2)	1 (4)	0 (0)	0 (0)	4 (2)	$F = 0.8$	0.06
<i>Type 1 diabetes, n (%)</i>	0 (0)	0 (0)	0 (0)	0 (0)	0 (0)	--	--
<i>Type 2 diabetes, n (%)</i>	2 (2)	0 (0)	0 (0)	0 (0)	2 (1)	$F = 0.6$	0.1
<i>Hypercholesterolemia, n (%)</i>	15 (11)	1 (4)	2 (13)	1 (13)	19 (1)	$\chi^2 = 1.1$	0.3

Table 2. Associations of plasma biomarkers and WMH with age-residualized NfL concentrations across diagnostic groups

	Whole Sample		Cognitively Stable		MCI		Dementia		Undetermined	
	r [CI]	p-value	r [CI]	p-value	r [CI]	p-value	r [CI]	p-value	r [CI]	p-value
WMH volume	0.32 [0.18, 0.44]	<0.0001	0.14 [-0.03, 0.30]	0.10	0.62 [0.23, 0.80]	0.003	0.42 [0.18, 0.85]	0.12	0.44 [-0.39, 0.87]	0.32
A β 42/40	0.14 [-0.01, 0.28]	0.06	0.12 [-0.05, 0.28]	0.18	-0.14 [-0.52, 0.28]	0.51	0.31 [-0.22, 0.70]	0.24	-0.41 [-0.87, 0.41]	0.31
p-tau217	0.52 [0.41, 0.62]	<0.0001	0.10 [-0.07, 0.26]	0.25	0.86 [0.70, 0.94]	<0.0001	0.82 [0.55, 0.94]	<0.0001	0.21 [-0.58, 0.80]	0.61
GFAP	0.31 [0.18, 0.44]	<0.0001	0.09 [-0.081, 0.25]	0.31	0.47 [0.08, 0.74]	0.02	0.62 [0.25, 0.87]	0.005	0.19 [-0.59, 0.79]	0.65

A β : β -amyloid, *WMH*: white matter hyperintensities, *p-tau217*: phosphorylated tau 217, *GFAP*: glial fibrillary acidic protein, *NfL*: neurofilament light chain, *MCI*: mild cognitive impairment

Figure 1. Frequency map of white matter hyperintensities in adults with Down syndrome. *A voxel-wise frequency map of WMH was created by summing voxels labeled across all 185 individual 3D and dividing by 185. Each voxel's value represents the proportion of times it was labeled as a WMH across the 185 masks from low frequency (red) to high frequency (yellow).*

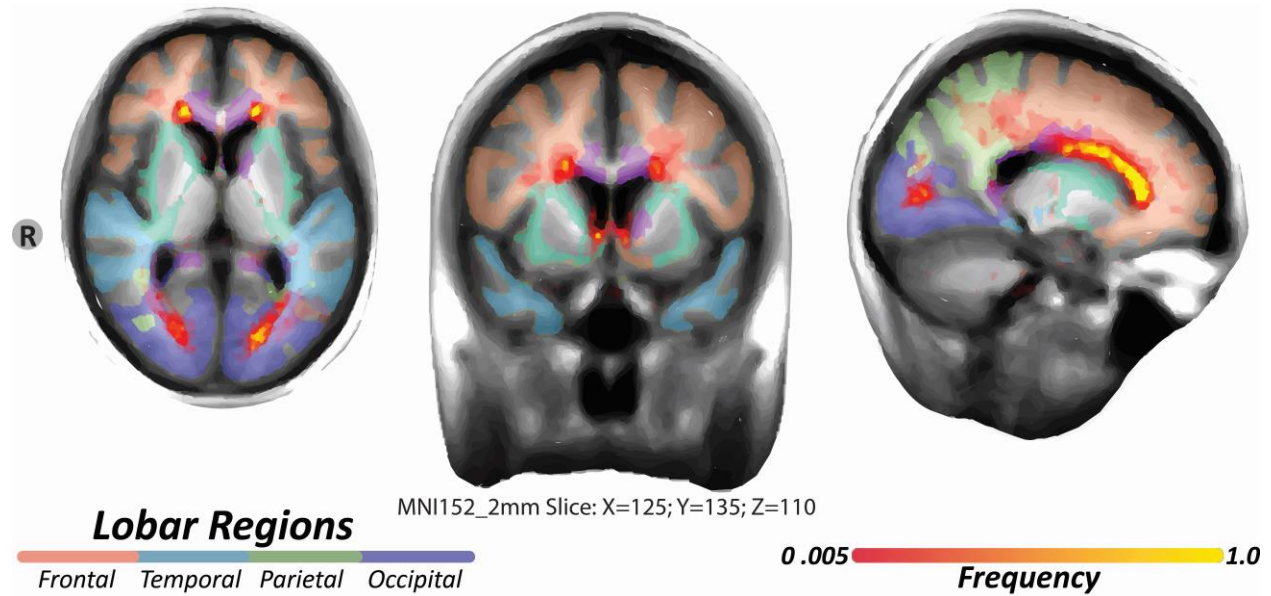


Figure 2. Conditional relationship between WMH and GFAP on p-tau217 concentration
Relationship between GFAP and p-tau217 concentration conditioned by WMH volume (A) and relationship between WMH and p-tau217 concentration conditioned by GFAP (B). The plots show the relationship between GFAP or WMH and p-tau217 for different ranges of WMH and GFAP, respectively. The panels are read from bottom left to top right along each row with the bottom row representing the lowest range of WMH volume and the top row representing the highest range of WMH volume. Rows demonstrating the relationship in individuals with higher distributions are indicated by (i) while relationships in participants with lower distributions are indicated by rows labeled (i). For example, in Figure 2A., the top right plot shows the relationship between GFAP and p-tau217 in individuals with the largest WMH volume (i) while the bottom left panel shows the relationship between GFAP and p-tau217 in individuals with the smallest WMH volume (ii). WMH: white matter hyperintensities, GFAP: glial fibrillary acidic protein, p-tau217: phosphorylated tau 217

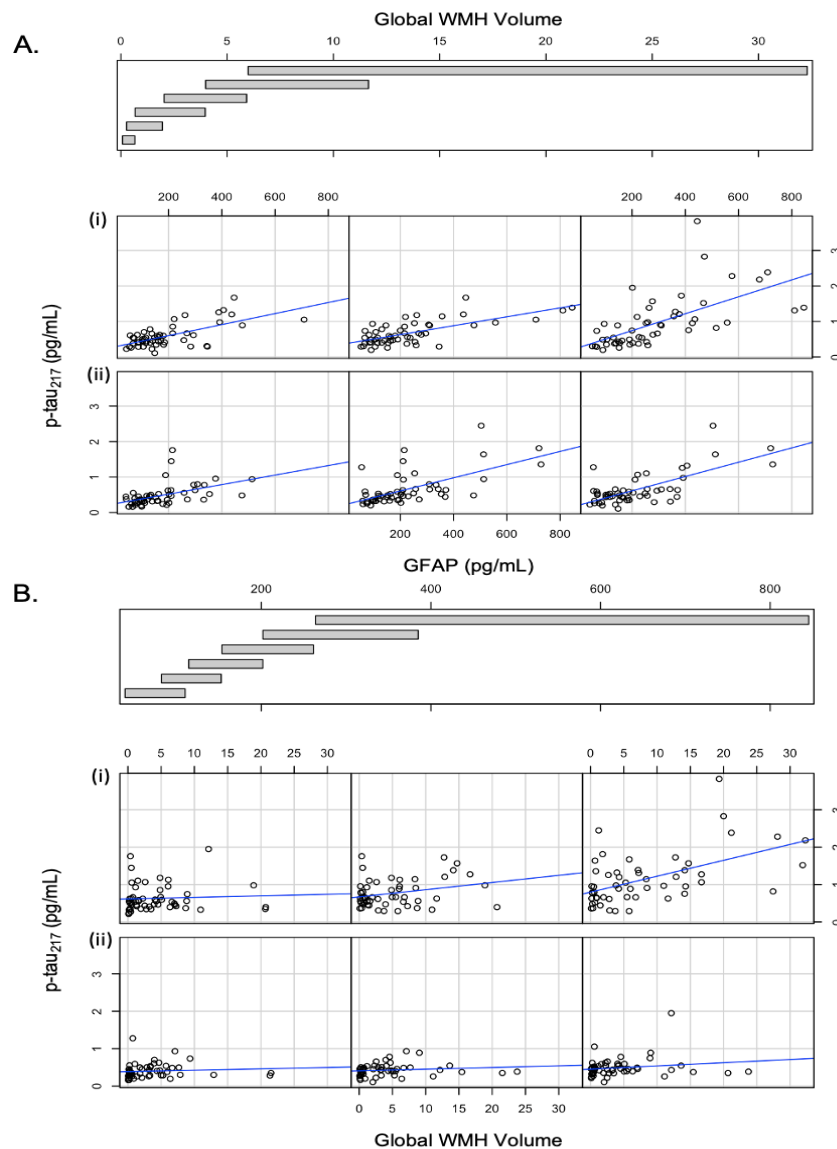


Figure 3. Path models for biomarker progression across diagnostic groups.

Statistical modeling calculates relative causal relationships among different pathophysiological contributors. Larger numbers (regression coefficients) signify stronger direct effects.

$A\beta$: β -amyloid, WMH: white matter hyperintensities, p-tau₂₁₇: phosphorylated tau 217, GFAP: glial fibrillary acidic protein, NfL: neurofilament light chain, MCI: mild cognitive impairment.

