

1 **Gender and Belief about Menstruation and Academic Performance**

2 Destiny Odah\*

3 \*Department of Health Sciences and Social Work, Western Illinois University, Macomb, IL,

4 U.S.A

5 Correspondence: da-odah@wiu.edu

6 **Author contributions:** DO design the study. DO formulated and organized the questionnaire on

7 Qualtrics. DO retrieve the data from Qualtrics, cleaned it, and analyzed it using Excel & SPSS.

8 DO drafted the manuscript.

9 **Informed consent statement:** Institution review board approved this study and participants

10 agreed with the consent form.

11 **Data availability statement:** Data available upon request

12 **Acknowledgments:** I would love to thank Dr. Lora Wallace for reviewing and assisting with this

13 study.

14  
15  
16  
17  
18  
19  
20  
21  
22  
23  
24  
25  
26  
27  
28  
29  
30  
31  
32  
33

34 **Abstract**

35 Menstruation is a natural process for women that shows a healthy female reproductive system, yet  
36 women are stigmatized during this experience. A woman's physical, mental, and social well-being  
37 are significantly impacted by menstruation. Thus, menstrual disorders are widespread and are a  
38 major social problem. There have been variations in people's perceptions of menstruation and gaps  
39 in research comparing gender and beliefs about menstruation and its impact on academic  
40 performance. This study investigates gender and beliefs about menstruation and how it affects  
41 academic performance and social life using a self-administered online questionnaire that inquires  
42 about general knowledge of menstruation, participants' beliefs and experiences with menstruation,  
43 participants' academic performance and demographic questions. Participants responded using a 5-  
44 point Likert scale, showing that 40.44% of the respondents' knowledge and understanding of  
45 menstruation have positively influenced over the years. Furthermore, the results from the chi-  
46 square analysis revealed an association between men's and women's perceptions of menstruation.  
47 Interestingly, women stated that menstruation has no effect on their academic performances, but  
48 on the other hand, men were indecisive about its impact on women's intellectual tasks. Also,  
49 28.72% of respondents reported that they find studying and excelling during menstruation uneasy.  
50 The result shows that women can excel at any task, even during menstruation. Knowledge of  
51 menstruation is essential in furthering a better understanding of women's health, demystifying  
52 menstruation myths, and advancing the social well-being of this gender.

53

54

55

56

57

58

59

## 60 **Introduction**

61  
62 Menstruation is a naturally occurring physiological phenomenon in women. It is controlled  
63 in a healthy woman by cyclical changes in estrogen and progesterone levels, which happen  
64 periodically throughout a cycle that lasts around one month (Farage *et al.*, 2009). Due to  
65 considerable hormonal changes, many changes in a woman's body occur throughout the menstrual  
66 cycle, from the first day of menstruation to the day before the next menstrual period. The effects  
67 of menstruation on a woman's physical, emotional, and social health are profound. "A degree of  
68 total physical, mental, and social well-being and not only the absence of illness or dysfunction  
69 about the monthly cycle" defines menstrual health (Hennegan *et al.*, 2021). Therefore, menstrual  
70 symptoms are among women's most prevalent issues (Farage *et al.*, 2009)—several variables  
71 relating to physical changes are viewed as disturbing and anguishing.

72 Premenstrual syndrome, or PMS as it is more generally known, remains the central area of  
73 interest in menstrual cycle research. Greene and Dalton (1953) introduced  
74 premenstrual syndrome to describe painful physical and psychological changes before and during  
75 menstruation. Premenstrual symptoms occur before menstruation, particularly during the luteal  
76 phase, and are associated with various cognitive, behavioral, and psychological changes (Vahia,  
77 2013). Symptoms of premenstrual syndrome include irritability, anxiety, disorientation,  
78 depression, rage outburst, or social withdrawal. Physiological symptoms are abdominal bloating,  
79 breast tenderness, headache, or swelling of extremities. These symptoms occurring during the five  
80 days preceding menstruation and occurring in at least three consecutive menstrual cycles signify  
81 PMS (Mortola *et al.*, 1989). These symptoms generally subside four days after the start of  
82 menstruation.

83 Premenstrual dysphoric disorder (PMDD) is a severe type of premenstrual syndrome  
84 (PMS) that affects 3-8% of women and causes significant psychological symptoms (Dillaz &  
85 Aksan, 2021). PMDD is described as having one or more of the following symptoms, according  
86 to the Diagnostic and Statistical Manual of Mental Disorders, Fifth Edition criteria: mood changes  
87 or sudden sadness or increased sensitivity to rejection, anger or irritability, sense of hopelessness  
88 or depression, self-critical thoughts, and anxiety and feeling on edge (Hantsoo & Epperson, 2015).  
89 Additional signs include a loss of interest, difficulty concentrating, exhaustion, changes in eating  
90 and sleep patterns, a sense of being out of control, and physical symptoms. These physical signs  
91 include breast soreness, swelling, joint or muscle pain, and weight gain. These symptoms  
92 negatively impact social and professional life and are attributed to other material or psychiatric  
93 illnesses or drugs (Shehadeh & Hamdan-Mansour, 2018).

94 Dysmenorrhea (primary and secondary), the term for menstrual aches and pains, is another  
95 typical menstrual condition. Secondary dysmenorrhea, in contrast to initial dysmenorrhea, is  
96 linked to pelvic pathology. A study by Alshahrani in 2020 reported that dysmenorrhea affects 15.8  
97 to 89.5% of women, with 20% reporting severe symptoms. However, secondary dysmenorrhea  
98 can occur due to gynecologic disorders such as endometriosis, adenomyosis, or uterine fibroid.  
99 Primary dysmenorrhea is reoccurring lower abdominal and pelvic pain during menstruation,  
100 affecting 45 to 95% of women of reproductive age. Although finding no correlation between  
101 dysmenorrhea and physical activity or skipping breakfast, a study (Faramarzi & Salmalian, 2014)  
102 found that women with higher levels of stress and coffee consumption had a higher risk of the  
103 condition. According to (Hu *et al.*,2020), women who skip breakfast, have short sleep durations,  
104 and go to bed late are likelier to experience dysmenorrhea than those who engage in physical  
105 activity or consume caffeine.

106           There have been variations and gaps in people's perceptions of menstruation. In a study  
107 carried out in Canada on women's perception of menstruation and PMS, several women's responses  
108 showed a positive and negative attitude toward the meaning of menstruation (Lee, 2002). Bhartiya,  
109 (2013) showed that gender, religion, and culture frequently establish menstrual customs and  
110 beliefs. Menstruation is socially unacceptable or stigmatized in many parts of the world,  
111 particularly in Asia and Africa's low- and middle-income nations (Hennegan *et al.*,2019). The  
112 concept of sickness as an undesirable condition in medical anthropological work adversely  
113 affects how women view their menstrual cycle (Hahn, 1995). Hahn (1995) also mentioned that a  
114 person's sense of self is thought to be threatened by sickness centered on their experience of a  
115 disordered state. As a result, a person devalues an undesirable situation based on specific  
116 characteristics they have learned to identify with health or well-being. According to Lee (2002),  
117 menstruation might be considered a negative or unpleasant condition (called PMS) or have a more  
118 positive implication. Women's behavior and work capacity have traditionally been thought to be  
119 influenced by menstruation and the menstrual cycle. Also connected to lower levels of body  
120 acceptance are negative attitudes concerning menstruation (Schooler, Ward, Meriwether, &  
121 Caruthers, 2005). The authors utilized computational modeling of structural equations on a sample  
122 of 199 undergraduate women to discover that women less secure with their bodies expressed  
123 reduced positive perceptions of menstruation and were less forceful regarding sexual decision-  
124 making (Schooler *et al.*, 2005).

125           Men's perceptions of menstruation were explored in Fishman's 2014 thesis paper. It was  
126 found that most participants said that knowing about menstruation in their early years left them  
127 with the strong impression that it is not a subject that ought to be addressed. Many participants

128 reported that their opinions about menstruation as adults remained shaped by their menstrual  
129 experiences as children, maybe because they lacked the desire to reevaluate harmful beliefs.  
130 According to Hamdan-Mansour *et al.* (2012), university students are at a stage in life where they  
131 lack the psychological and social skills necessary to manage daily life stressors. Despite lacking  
132 resources and being plagued by psychological and social expectations, they endeavor for more  
133 outstanding educational accomplishments to obtain better employment and meet their actualization  
134 goals (Hamdan-Mansour *et al.*, 2012; Neumann *et al.*, 2009). The impact of menstruation on  
135 academic performance has been researched for the past century. According to a recent  
136 comprehensive review, dysmenorrhea is associated with academic impairments such  
137 as absenteeism, less engagement in class activities, lack of concentration, and poor academic  
138 performance (Munro *et al.*, 2021). Although studies have reported dysmenorrhea as associated  
139 with intellectual impairments, no study has compared gender beliefs about menstruation and its  
140 impacts on academic performance and social activities.

141 This study aims to establish the beliefs and perceptions of menstruation and its effects on  
142 female academic performance and social activities.

143  
144

## 145 **Material & Methods**

146

147 A self-administered online survey was used —the questionnaire comprised four sections.

148 The first section inquired about general knowledge of menstruation; the second section asked about  
149 participants' beliefs and experiences with menstruation; the third investigated participants'  
150 academic performance; the last section was on socio-demographic questions. Participants  
151 responded using a 5-point Likert scale response. The Western Illinois University Institutional  
152 Review Board (IRB) approved this study. An email solicitation was sent to Western Illinois

153 University students with the survey links. Western Illinois University students aged 18 and above  
154 interested in proceeding to the questionnaire had to provide online informed consent. They were  
155 informed of their right to withdraw at any time, and no risk was involved in participating. The  
156 survey was sent to students a month before the end of the spring 2023 semester, of which 280  
157 students responded. No identification information was gathered.

158 Before analysis, the dataset was checked for missing data and then analyzed using the  
159 statistical software SPSS. Also, the chi-square statistical test was used to examine the correlation  
160 between gender's perception of menstruation.

161

## 162 **Result and Discussion**

### 163 **Demographic characteristics**

164 A total of 264 students completed this section (Table 1), of which all declared their age,  
165 261 revealed their race/ ethnicity, and 262 revealed their gender identity. The highest number of  
166 participants in this study falls in the age group 18-22 (n=134, 50.76%), followed by the age group  
167 23-27 (n=58, 21.97%), compared to participants older than 42 (n=26, 9.85%), showing that  
168 participants are college students. Most participants are white (n=191, 73.18%); however, the  
169 participants cut across different ethnicities. Women are more prevalent (n=188, 71.76%) as the  
170 majority of respondents compared to the other genders, which can be expected. Also, the  
171 participants specialize in several majors at the university.

172

173

**Table 1.** Demographic information of participants (N=264)

174

175

Description	Participants	Frequency	%RF		
Age	18-22	134	50.76		
	23-27	58	21.97		
	28-32	22	8.33		
	33-37	15	5.68		
	38-42	9	3.41		
180	Older than 42	26	9.85		
181	Race/ Ethnicity	Asian	6	2.30	
182					
183					
184					
185		Black or African American	49	18.77	
186		White/black	4	1.53	
187		Hispanic	11	4.21	
188		White	191	73.18	
189		Gender Identity	Genderfluid	1	0.38
190			Human	1	0.38
191	Man		63	24.05	
192	Nonbinary		5	1.91	
193	None		3	1.15	
194	Transformer	1	0.38		
195	Woman	188	71.76		

176

177

178

179

180

181

182

183

184

185

186

187

188

189

190

191

192

193

194

195

196

197

198

199

200

### **Knowledge of menstruation**

201

202

203

204

205

206

207

208

209

This section aims to examine participants' general knowledge of menstruation. A total of 143 (54.6%) of the 262 participants reported that they were between the ages 6-10 when they first heard about menstruation (Fig 1), which suggests that they have a good knowledge of menstruation at an early age. Furthermore, the source of participant's early education on menstruation was further explored, and the result from the survey showed that most participants (37.5%) acquired menstruation information from family members and siblings (Fig 2), suggesting effective communication of menstruation among parents and children. Also, this study examines participants' knowledge of menstruation over time. The survey showed that the understanding of



210 most participants (40.44%, n= 110) had been positively influenced over time (Table 2). Although  
211 this study did not go into detail about the positive change in knowledge over time, the result  
212 suggests that the mindset of participants has been positively influenced as they grow.

213

214

215

216

217

218

219

220

221

222

223

224

225

226

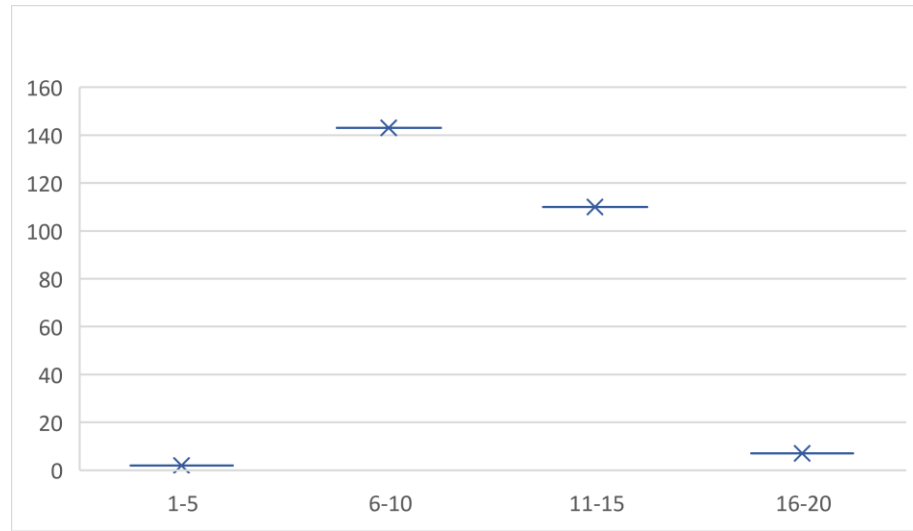
227

228

229

230

231



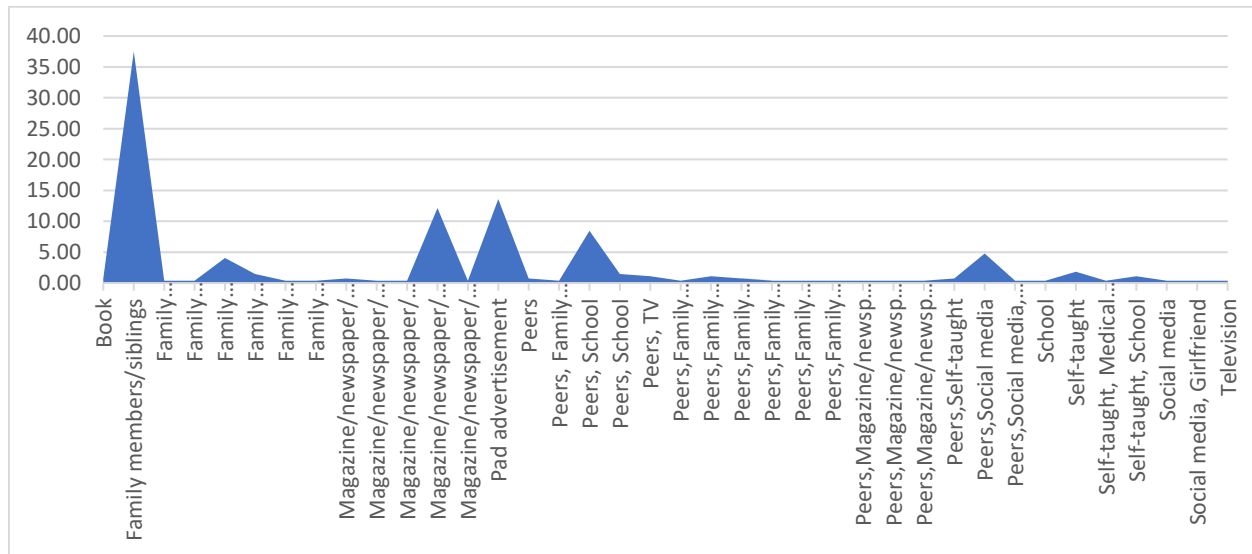
**Figure 1.** The age range at which participants first heard about menstruation.

232

233

234

235



**Figure 2.** Participants' source of menstruation information

236 **Table 2.** Change in participants knowledge about menstruation over time (N=272).

237

238

239

240

241

242

243

244

245

246

247

248

249

## 250 **Beliefs and Perceptions**

251

252 In this section, the perception of men and women were examined singly to understand each

253 gender's belief of menstruation properly. A total of 63 men (Table 3) participated in the survey,

254 while 190 women participated (Table 4). Although most men participants (n= 31, 49.21%) agree

255 that tiredness seen in women during menstruation could be associated with dysmenorrhea, a

256 significant number of men participants do not agree that women's fatigue could be related to

257 menstruation (n= 30, 47.62%). On the other hand, an increased number of women participants

258 (47.37, n=90) agreed that menstruation complications could be related to tiredness seen in women

259 during menstruation. Interestingly, 71 women participants (37.37%) strongly agreed, suggesting

260 that men might be unaware of the exhaustion associated with women's menstruation. Furthermore,

261 the study examines the participants' perception of the effect of menstruation on social activities.

262 The feedback revealed that 89 (46.84%) and 75 (39.47%) woman participants agreed and strongly

263 agreed to turn down social plans due to menstruation, which is related to men participants'

264 responses. Notably, most women participants reported that menstruation does not affect their

265 intellectual tasks (strongly disagree = 60, 31.58%), while most men were indecisive (neutral = 23,

266 36.51%). The statistical package for the social sciences (SPSS) was used to carry out a chi-square

267 to determine whether there is a relationship between men's and women's perceptions. The result  
 268 showed that there is an association between the beliefs of the two genders (p-value < 0.05) (Table  
 269 5).

270 **Table 3.** Men’s belief and perception about menstruation

Beliefs	Men's belief (n= 63)				
	Agree	Disagree	Neutral	Strongly agree	Strongly disagree
Menstruation is a natural process that occurs in a woman’s body	14.29	0	0	85.71	0
Menstruation is a dirty and shameful thing that should not be talked about in public.	0	20.63	15.87	0	63.49
Women are more tired than usual when they are menstruating	49.21	3.17	0	0	47.62
Women who say they feel sick during menstruation are just making excuses	3.17	41.27	6.35	0	49.21
Men have an advantage in not having menstruation	33.33	12.7	22.22	25.4	6.35
Menstruation is important because it marks the beginning of womanhood	38.1	11.11	36.51	12.7	1.59
Menstruation affects how women perform intellectual tasks	17.46	26.98	36.51	3.17	15.87
I sometimes talk about menstruation with others	39.42	22.22	25.4	7.94	9.52
Menstruation causes physical and emotional discomfort that can negatively impact a woman’s daily life	50.79	3.17	17.46	28.57	0
Menstruation should be normalized in society, and women should not feel ashamed or embarrassed to talk about it	34.92	1.59	6.35	57.14	0
Menstruation is a time when women should take extra care of their bodies and practice self-care	49.21	0	12.7	38.1	0
Menstruation could be responsible for women turning down social plans	57.14	3.17	15.87	22.22	1.59
Menstruation can have a negative impact on a woman’s academic performance	25.4	19.05	36.51	11.11	7.94

271

272

273

274

275  
276  
277  
278

**Table 4.** Women’s belief and perception about menstruation

Beliefs	Women's belief (n= 190)				
	Agree	Disagree	Neutral	Strongly agree	Strongly disagree
Menstruation is a natural process that occurs in a woman’s body	11.05	0.53	2.63	84.21	1.58
Menstruation is a dirty and shameful thing that should not be talked about in public.	1.05	19.47	5.26	0.53	73.63
Women are more tired than usual when they are menstruating	47.37	1.58	13.68	37.37	0
Women who say they feel sick during menstruation are just making excuses	0	19.47	4.21	0	76.32
Men have an advantage in not having menstruation	38.42	6.32	21.58	31.58	2.11
Menstruation is important because it marks the beginning of womanhood	25.79	20.53	38.95	8.95	5.79
Menstruation affects how women perform intellectual tasks	20	23.68	20.53	4.21	31.58
I sometimes talk about menstruation with others	46.84	4.21	6.32	41.05	1.58
Menstruation causes physical and emotional discomfort that can negatively impact a woman’s daily life	36.32	1.05	4.74	57.37	0.53
Menstruation should be normalized in society, and women should not feel ashamed or embarrassed to talk about it	17.37	0	6.84	75.79	0
Menstruation is a time when women should take extra care of their bodies and practice self-care	35.26		6.84	57.37	0
Menstruation could be responsible for women turning down social plans	46.84	3.16	10	39.47	0.53
Menstruation can have a negative impact on a woman’s academic performance	36.32	14.21	27.89	15.79	5.79

279  
280  
281  
282  
283  
284  
285  
286  
287  
288

289  
290  
291  
292  
293  
294  
295  
296  
297  
298  
299  
300  
301  
302  
303  
304  
305  
306  
307  
308  
309  
310  
311  
312  
313  
314  
315  
316  
317  
318  
319  
320  
321  
322  
323  
324  
325  
326  
327  
328  
329  
330  
331  
332  
333  
334

**Table 5.** Relationship between men and female perception about menstruation (95% CI)

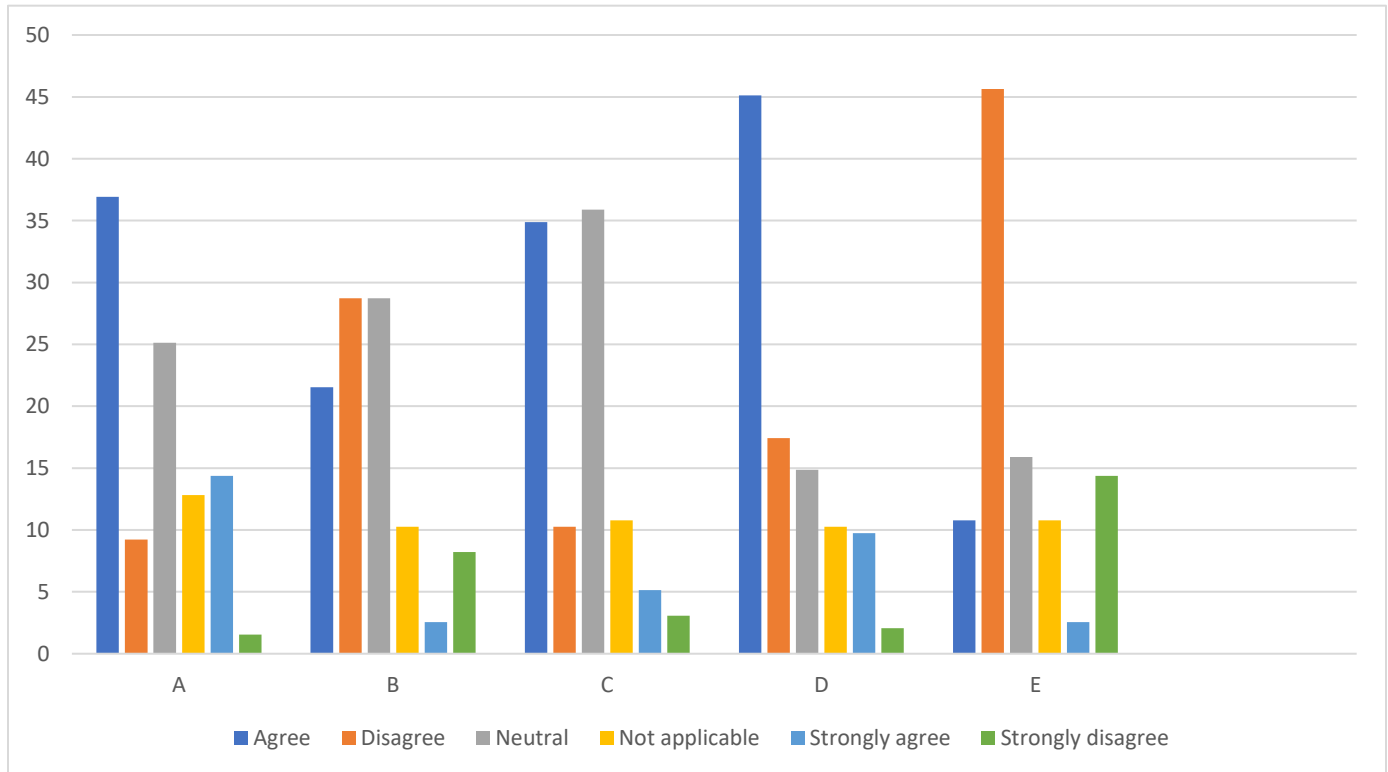
<b>CHI-SQUARE</b>		
<b>Belief and Perception</b>	<b>df</b>	<b>Pvalue</b>
Menstruation is a natural process that occurs in a woman's body	16	2.20E-12
Menstruation is a dirty and shameful thing that should not be talked about in public.	12	2.20E-16
Women are more tired than usual when they are menstruating	12	2.20E-16
Women who say they feel sick during menstruation are just making excuses	10	2.20E-16
Men have an advantage in not having menstruation	20	2.20E-16
Menstruation is important because it marks the beginning of womanhood	20	2.20E-16
Menstruation affects how women perform intellectual tasks	20	2.20E-16
I sometimes talk about menstruation with others	20	7.02E-14
Menstruation causes physical and emotional discomfort that can negatively impact a woman's daily life	16	2.20E-16
Menstruation should be normalized in society, and women should not feel ashamed or embarrassed to talk about it	8	2.20E-16
Menstruation is a time when women should take extra care of their bodies and practice self-care	9	2.20E-16
Menstruation could be responsible for women turning down social plans	20	7.02E-14
Menstruation can have a negative impact on a woman's academic performance	20	2.20E-16

### 335 **Academic performance**

336 The academic performance of students before and during menstruation was further  
337 explored to examine any association. First, students' academic performance before menstruation  
338 was examined, and the highest population (36.92%, n=72) agreed that studying and excelling at  
339 any academic task before menstruation was easy (Figure 3). Next, the study investigated how easy  
340 studying and excelling at any academic performance was during menstruation. The result showed  
341 that 28.72% (n=56) of participants reported feeling uneasy about studying and excelling during  
342 menstruation—also, 28.72% (n=56) were indecisive about how they perform at their academic  
343 task during menstruation, suggesting that it might not be very easy for them during their periods  
344 (Figure 3). Furthermore, participants' satisfaction with the results of exams taken during  
345 menstruation was examined. The results showed that the highest number of participants was  
346 uncertain (35.9%, n= 70), suggesting their results might not be as good as those taken without  
347 menstruation. On the other hand, 34.87% (n=68) reported that they are satisfied regardless of their  
348 menstruation (Figure 3). To further clarify, the survey explored if students' academic performance  
349 goes as expected during menstruation. The results showed that the most significant number of  
350 participants (45.13%, n=88) reported that menstruation does not affect their academic performance  
351 (Figure 3). Interestingly, 89.23% (n=174) of the participant's GPA falls in the range of 3-4 (Table  
352 5). Also, a significant number of participants (45.54%, n=89) reported that they don't pile up their  
353 school workload till after menstruation, suggesting that students can perform well in their  
354 academic tasks during menstruation even though they find it uneasy. Lastly, the degree of  
355 absenteeism due to dysmenorrhea was examined among participants (Figure 4). The results  
356 showed that many participants (59%, n=111) were never absent from school due to menstruation  
357 complications, which further validated that students can resist the intricacies of menstruation.

358 Notably, other participants reported their absenteeism, suggesting that complications might differ  
359 among women.

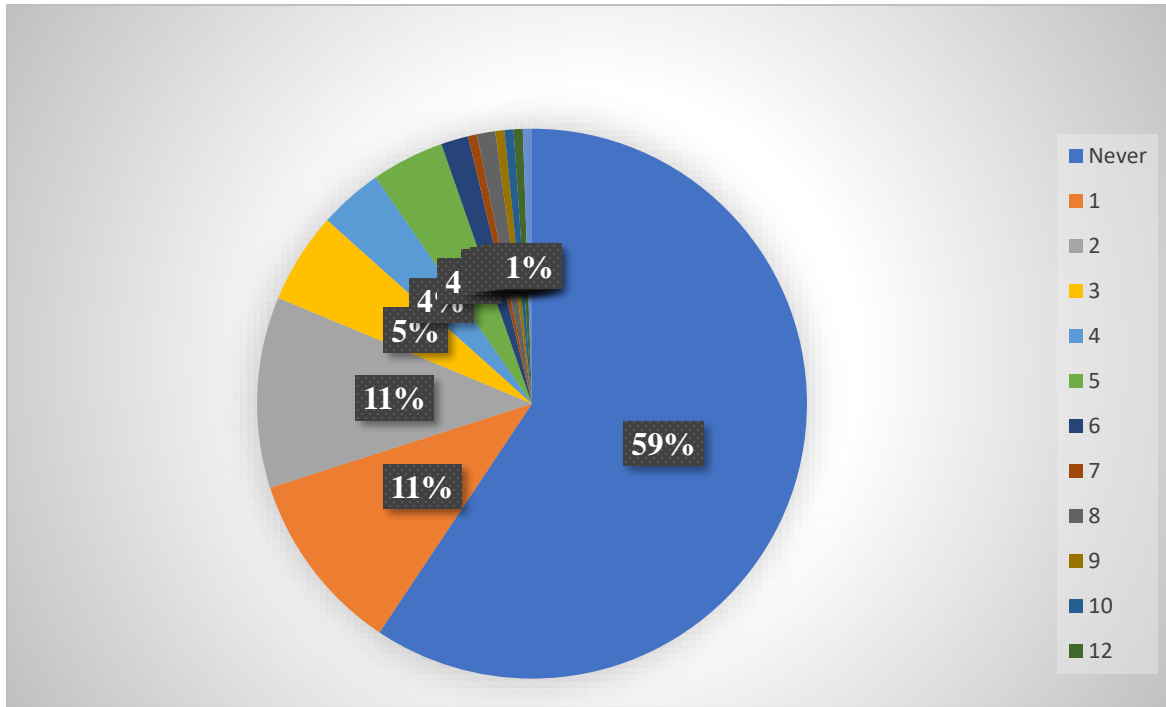
360



361

362 **Figure 3.** Participants' academic performance. A - I find studying and excelling at any academic  
363 task "before" menstruation easy; B - I find studying and excelling at any academic task "during"  
364 menstruation easy; C - I am satisfied with the results of exams taken during menstruation; D -  
365 During menstruation, my academic performance goes as expected; E - After menstruation, my  
366 academic workload piles up so high that I cannot overcome them.

367



368

369

**Figure 4.** Participants absenteeism due to dysmenorrhea

370

371

372

373

374

375

**Table 6.** Participant grade point average

	Range	Frequency	%RF
Participant GPA	1-1.9	1	0.51
	2-2.9	16	8.21
	3-4	174	89.23

376

377

378

379

380

381



382 **Conclusion**

383

384 Through a self-administered online survey, this study revealed that men are indecisive about  
385 menstruation complications on females' academic performance. Also, women reported that  
386 menstruation does not affect their academic performance or ability to perform intellectual tasks  
387 despite their struggles with fatigue during menstruation. However, menstruation could be  
388 associated with women turning social plans down. Future studies should examine menstruation  
389 knowledge of men and disembark information to fill the knowledge gap. Also, previous studies  
390 have reported that menstruation affects women's academic performance; however, this study  
391 showed that menstruation does not affect women's academic performance but agrees that it does  
392 affect their social life. Thus, future studies should further examine this to resolve the controversy.

393

394

395

396

397

398

399

400

401

402

403

404

405

406 **References**

- 407 Alshahrani, M. S. (2020). Dysmenorrhea and its effects among female students at health colleges  
408 in Najran University, Saudi Arabia: a cross-sectional study. *J Women's Health Care*,  
409 9(484), 10-35248.
- 410 Bhartiya, A. (2013). Menstruation, religion and society. *International Journal of Social Science*  
411 *and Humanity*, 3(6), 523.
- 412 Dilbaz B, Aksan A. Premenstrual syndrome, a common but underrated entity: review of the  
413 clinical literature. *J Turk German Gynecol Assoc.* (2021) 22:139–48. doi:  
414 10.4274/jtgga.galenos.2021.202 0.0133
- 415 Farage, M. A., Neill, S., & MacLean, A. B. (2009). Physiological changes associated with the  
416 menstrual cycle: a review. *Obstetrical & gynecological survey*, 64(1), 58-72.
- 417 Faramarzi, M., & Salmalian, H. (2014). Association of psychologic and nonpsychologic factors  
418 with primary dysmenorrhea. *Iranian Red Crescent Medical Journal*, 16(8).
- 419 Fishman, K. (2014). Putting Men Back in the Menstrual Cycle: A Qualitative Analysis of Men's  
420 Perceptions of Menstruation. *Theses. Paper, 1520*.
- 421 Greene, R., & Dalton, K. (1953). The premenstrual syndrome. *British Medical Journal*, 1(4818),  
422 1007.
- 423 Hahn, R. A. (1995). *Sickness and healing: An anthropological perspective*. Yale University  
424 Press.
- 425 Hantsoo, L., & Epperson, C. N. (2015). Premenstrual dysphoric disorder: epidemiology and  
426 treatment. *Current psychiatry reports*, 17(11), 87.

- 427 Hennegan, J., Shannon, A. K., Rubli, J., Schwab, K. J., & Melendez-Torres, G. J. (2019).  
428 Women's and girls' experiences of menstruation in low-and middle-income countries: A  
429 systematic review and qualitative metasynthesis. *PLoS medicine*, *16*(5), e1002803.
- 430 Hennegan, J., Winkler, I. T., Bobel, C., Keiser, D., Hampton, J., Larsson, G., ... & Mahon, T.  
431 (2021). Menstrual health: a definition for policy, practice, and research. *Sexual and*  
432 *Reproductive Health Matters*, *29*(1), 31-38.
- 433 Hu, Z., Tang, L., Chen, L., Kaminga, A. C., & Xu, H. (2020). Prevalence and risk factors  
434 associated with primary dysmenorrhea among Chinese female university students: a  
435 cross-sectional study. *Journal of pediatric and adolescent gynecology*, *33*(1), 15-22.
- 436 Lee, S. (2002). Health and sickness: The meaning of menstruation and premenstrual syndrome in  
437 women's lives. *Sex roles*, *46*(1/2), 25.
- 438 Mortola, J. F., Girton, L., & Yen, S. S. (1989). Depressive episodes in premenstrual syndrome.  
439 *American journal of obstetrics and gynecology*, *161*(6), 1682-1687.
- 440 Munro, A. K., Hunter, E. C., Hossain, S. Z., & Keep, M. (2021). A systematic review of the  
441 menstrual experiences of university students and the impacts on their education: a global  
442 perspective. *PloS one*, *16*(9), e0257333.
- 443 Schooler, D., Ward, L. M., Merriwether, A., & Caruthers, A. S. (2005). Cycles of shame:  
444 Menstrual shame, body shame, and sexual decision-making. *Journal of sex research*,  
445 *42*(4), 324-334.
- 446 Shehadeh, J. H., & Hamdan-Mansour, A. M. (2018). Prevalence and association of premenstrual  
447 syndrome and premenstrual dysphoric disorder with academic performance among  
448 female university students. *Perspect Psychiatr Care*, *54*(2), 176-184.

- 449 Vahia, V. N. (2013). Diagnostic and statistical manual of mental disorders 5: A quick glance.  
450 *Indian journal of psychiatry*, 55(3), 220-223.
- 451 Young, I. M. (2005). *On female body experience: "Throwing like a girl" and other essays*. Oxford  
452 University Press.