

1 **New-onset prostate cancer in type 2 diabetes mellitus exposed to the SGLT2I, DPP4I**  
2 **and GLP1a: A population-based cohort study**

3 Oscar Hou In Chou MSc <sup>1\*</sup>, Lei Lu, Ph.D. <sup>2\*</sup>, Cheuk To Chung <sup>3</sup>, Jeffrey Shi Kai Chan  
4 MBChB MPH <sup>3</sup>, Raymond Ngai Chiu Chan MBChB <sup>3</sup>, Athena Lee Yan Hiu <sup>3</sup>, Edward  
5 Christopher Dee MD <sup>4</sup>, Kenrick Ng MB BChir MA MRCP PhD <sup>5,6</sup>, Hugo Hok Him Pui <sup>3</sup>,  
6 Sharen Lee MBChB <sup>3</sup>, Bernard Man Yung Cheung MB BChir PhD FRCP <sup>1</sup>, Gary Tse MD  
7 PhD FRCP <sup>7, 8, 9</sup>, Jiandong Zhou PhD <sup>10^</sup>

8  
9 <sup>1</sup> Division of Clinical Pharmacology, Department of Medicine, School of Clinical Medicine,  
10 Li Ka Shing Faculty of Medicine, University of Hong Kong, Hong Kong, China

11 <sup>2</sup> Institute of Biomedical Engineering, Department of Engineering Science, University of  
12 Oxford, Oxford, United Kingdom

13 <sup>3</sup> Cardiovascular Analytics Group, Laboratory of Cardiovascular Physiology, Hong Kong,  
14 China

15 <sup>4</sup> Department of Radiation Oncology, Memorial Sloan Kettering Cancer, New York, United  
16 States

17 <sup>5</sup> Department of Medical Oncology, University College London Hospital, London, UK.

18 <sup>6</sup> Department of Medical Oncology, St Bartholomew's Hospital, London, UK

19 <sup>7</sup> School of Nursing and Health Studies, Hong Kong Metropolitan University, Hong Kong,  
20 China

21 <sup>8</sup> Tianjin Key Laboratory of Ionic-Molecular Function of Cardiovascular Disease, Department  
22 of Cardiology, Tianjin Institute of Cardiology, Second Hospital of Tianjin Medical  
23 University, Tianjin 300211, China

24 <sup>9</sup> Kent and Medway Medical School, Canterbury Christ Church University and University of  
25 Kent, Canterbury, United Kingdom

26 <sup>10</sup> Division of Experimental Medicine, Nuffield Department of Medicine, University of  
27 Oxford, Oxford, United Kingdom

28  
29  
30  
31 \* Co-first author

32 ^ Correspondence to:

33 Jiandong Zhou, Ph.D.

34 Division of Experimental Medicine, Nuffield Department of Medicine, University of Oxford,  
35 Oxford, United Kingdom

36 Email: [jiandong.zhou@ndm.ox.ac.uk](mailto:jiandong.zhou@ndm.ox.ac.uk)

37  
38  
39 **NOTE: This preprint reports new research that has not been certified by peer review and should not be used to guide clinical practice.**

40 **Abstract**

41 **Background:** Sodium-glucose cotransporter 2 inhibitors (SGLT2I) have been suggested to  
42 reduce new-onset cancer amongst type-2 diabetes mellitus (T2DM) patients.

43 **Objective:** This real-world study aims to compare the risks of prostate cancer between  
44 SGLT2I and dipeptidyl peptidase-4 inhibitors (DPP4I) amongst T2DM patients.

45 **Design, setting and participants:** This was a retrospective population-based cohort study of  
46 prospectively recorded data on type-2 diabetes mellitus (T2DM) male patients prescribed  
47 either SGLT2I or DPP4I between January 1<sup>st</sup> 2015 and December 31<sup>st</sup> 2020 from Hong  
48 Kong.

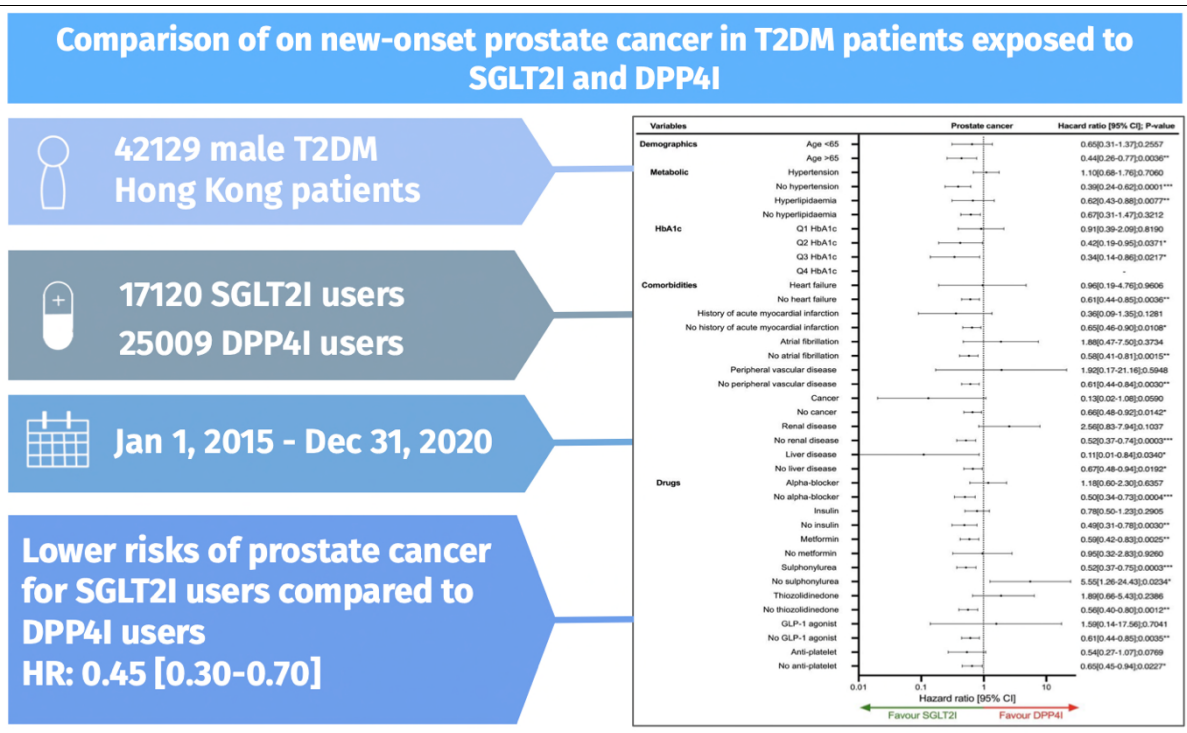
49 **Methods:** The primary outcome was new-onset prostate cancer. The secondary outcomes  
50 included cancer-related mortality and all-cause mortality. Propensity score matching (1:1  
51 ratio) using the nearest neighbour search was performed and multivariable Cox regression  
52 was applied to compare the risk. A three-arm sensitivity analysis including the glucagon-like  
53 peptide-1 receptor agonist (GLP1a) cohort was conducted.

54 **Results:** This study included 42129 male T2DM patients (median age: 61.0 years old [SD:  
55 12.2]; SGLT2I: n=17120; DPP4I: n=25009). After matching, the number of prostate cancers  
56 was significantly lower in SGLT2I users (n = 60) than in DPP4I (n = 102). SGLT2I use was  
57 associated with lower prostate cancer risks (HR: 0.45; 95% CI: 0.30-0.70) after adjustments  
58 than DPP4I. The results remained consistent in the sensitivity analysis. SGLT2I reduced the  
59 risks of prostate cancer prominently amongst patients who were older (age >65), patients  
60 with 2<sup>nd</sup> and 3<sup>rd</sup> quartile of HbA1c, concurrent metformin uses, and concurrent sulphonylurea  
61 uses. SGLT2I was associated with higher risks of prostate cancer amongst sulphonylurea  
62 non-users.

63 **Conclusion:** The real-world study demonstrated SGLT2I was associated with lower risks of  
64 new-onset prostate cancer after matching and adjustments compared to DPP4I. This result  
65 warrants further prospective studies.

66

67 **Keywords:** Sodium-glucose cotransporter 2 inhibitors; Dipeptidyl peptidase-4 inhibitors;  
 68 Glucagon-like peptide-1 receptor agonist; Prostate; Prostate cancer  
 69



70  
 71  
 72 **Graphical abstract**

## 73 **Introduction**

74           Type 2 diabetes mellitus (T2DM) and prostate cancer are two of the most common  
75 chronic diseases that are affected by the ageing male population [1, 2]. Despite relatively lower  
76 rates of prostate cancer in Asia compared to Northern America, there have been increasing  
77 incidence rates in several Asian countries, which is potentially related to the rising prevalence  
78 of obesity, metabolic aberrations and T2DM [3, 4]. The current literature suggests an  
79 association between T2DM and cancer proliferation, however its influence on the development  
80 of prostate cancer remains controversial [5]. This notwithstanding, there is also evidence  
81 suggesting that SGLT2I demonstrate a protective effect against new-onset overall cancer  
82 compared to DPP4I [6]. This has sparked interest in inquiring whether better diabetic  
83 management can reduce the risk of prostate cancer via existing anti-diabetic medications.  
84 Subsequently, this may allow clinicians to consider alternative treatment options for those at  
85 risk of prostate cancer.

86           Previous results regarding the association of prostate cancer and metformin use remains  
87 controversial [7-10]. This further propagated research on novel anti-diabetic agents such as  
88 sodium-glucose cotransporter 2 inhibitors (SGLT2I) and dipeptidyl peptidase 4 inhibitors  
89 (DPP4I) on prostate cancer; as these drugs are the novel second line anti-diabetic medication  
90 commonly prescribed in Hong Kong and other developed countries. Previous studies has  
91 shown that the inhibition of SGLT2-mediated glucose uptake could reduce the proliferation of  
92 prostate cells molecularly [11]. Meanwhile, the clinical data on SGLT2I remained scarce. For  
93 direct comparison between the SGLT2I and DPP4I usage in the clinical setting, a study found  
94 no significant difference in risk of prostate cancer [12]. As of now, there is limited clinical  
95 evidence surrounding the association of SGLT2I and DPP4I on prostate cancer. This present  
96 study aims to investigate the role of SGLT2I and DPP4I with new-onset prostate cancer in a  
97 cohort of T2DM patients from Hong Kong.

98

## 99 **Methods**

### 100 *Study population*

101 This study was approved by the Institutional Review Board of the University of Hong  
102 Kong/Hospital Authority Hong Kong West Cluster (HKU/HA HKWC IRB) (UW-20-250) and  
103 complied with the Declaration of Helsinki. This was a retrospective population-based study of  
104 prospectively collected electronic health records using the Clinical Data Analysis and  
105 Reporting System (CDARS) by the Hospital Authority (HA) of Hong Kong. The records cover  
106 both public hospitals and private clinics in Hong Kong. It was verified that over 90% of the  
107 identified T2DM patients were under the HA [13, 14]. This system has been used extensively  
108 by our teams and other research teams in Hong Kong. The system contains data on disease  
109 diagnosis, laboratory results, past comorbidities, clinical characteristics, and medication  
110 prescriptions. The system has been used by our Hong Kong research team to perform  
111 comparative studies [9, 15, 16]. T2DM patients who were administered with SGLT2I or DPP4I  
112 in centres under the Hong Kong HA, between January 1st, 2015, to December 31st, 2020, were  
113 included. The glucagon-like peptide-1 receptor agonist (GLP1a) cohort was included for  
114 sensitivity analysis to demonstrate the relative effects amongst the second line oral anti-diabetic  
115 agents.

116

117

### 118 *Predictors and variables*

119 Patients' demographics include gender and age of initial drug use (baseline), clinical  
120 and biochemical data were extracted for the present study. Prior comorbidities were extracted  
121 in accordance with the *International Classification of Diseases Ninth Edition* (ICD-9) codes  
122 (**Supplementary Table 1**). The diabetes duration was calculated by examining the earliest date

123 amongst the first date of (1) diagnosis using of ICD-9; (2) Hba1c  $\geq$ 6.5%; (3) Fasting glucose  
124  $\geq$  7.0 mmol/l or Random glucose 11.1 mmol/l 4) Using anti-diabetic medications. The number  
125 of hospitalisations in the year prior the index days were extracted. The Charlson's standard  
126 comorbidity index was calculated [17]. The prostate medication (alpha-blockers),  
127 cardiovascular medications, anti-diabetic agents, and were extracted from the database. The  
128 duration and frequency of SGLT2I and DPP4I usage were calculated. The baseline laboratory  
129 examinations, including the glucose profiles and renal function tests were extracted. The  
130 microbiology testing results were also extracted to define the urinary tract infection  
131 **(Supplementary Table 1)**. The estimated glomerular filtration rate (eGFR) was calculated  
132 using the abbreviated modification of diet in renal disease (MDRD) formula [18]. The  
133 following patient groups were excluded: those who (1) with prior prostate cancer (n=135); (2)  
134 died within 30 days after initial drug exposure (n=167); (3) without complete demographics  
135 (n=11); (4) under 18 years old (n=29); (5) new onset prostate cancer development less than 1  
136 year after drug exposure (n=20) **(Figure 1)**. To account for the incomplete laboratory data, the  
137 multiple imputation by chained equations was performed according to the previous published  
138 study [19].

139

#### 140 *Study outcomes*

141 The primary outcome of this study was new-onset prostate cancer (ICD9: 185) after the  
142 index date of the drug use. The secondary outcomes were cancer-related mortality and all-cause  
143 mortality. Mortality data were obtained from the Hong Kong Death Registry, a population-  
144 based official government registry with the registered death records of all Hong Kong citizens  
145 linked to CDARS. Mortality was recorded using the *International Classification of Diseases*  
146 *Tenth Edition* (ICD-10) coding. The as-treat approach was adopted which patients were  
147 censored at treatment discontinuation or switching of the comparison medications. The

148 endpoint date of interest for eligible patients was the event presentation date. The endpoint for  
149 those without primary outcome was the mortality date or the end of the study period (31<sup>st</sup>  
150 December 2020).

151

### 152 *Statistical analysis*

153 Descriptive statistics are used to summarize baseline clinical and biochemical  
154 characteristics of patients with SGLT2I and DPP4I use. For baseline clinical characteristics,  
155 continuous variables were presented as mean (95% confidence interval/standard deviation [SD])  
156 and the categorical variables were presented as total numbers (percentage). Propensity score  
157 matching generated by logistic regression with 1:1 ratio for SGLT2I use versus DPP4I use  
158 based on demographics, number of prior hospitalization, non-SGLT2I/DPP4I medications,  
159 number of prior anti-diabetic drugs, prior comorbidities, renal function, duration from T2DM  
160 diagnosis initial drug exposure, HbA1c and fasting glucose were performed using the nearest  
161 neighbour search strategy with a calliper of 0.1. Propensity score matching was performed  
162 using Stata software (Version 16.0). Baseline characteristics between patients with SGLT2I  
163 and DPP4I use before and after matching were compared with absolute standardized mean  
164 difference (SMD), with SMD<0.10 regarded as well-balanced between the two groups.

165 The cumulative incidence curves for the primary outcomes and secondary outcomes  
166 were constructed. Proportional Cox regression models were used to identify significant risk  
167 predictors of adverse study outcomes, with adjustment for demographics, comorbidities,  
168 number of prior hospitalisations, medication profile, renal function, glycaemic tests, and the  
169 duration of T2DM. The log-log plot was used to verify the proportionality assumption for the  
170 proportional Cox regression models. Subgroup analysis was conducted to confirm the  
171 association amongst patients with different clinical important predictors accounting to the  
172 diabetic and the metabolic profile, as well as the conditions and medications associated with



173 prostate diseases. Cause-specific and sub-distribution hazard models were conducted to  
174 consider possible competing risks. Multiple propensity adjustment approaches were used,  
175 including propensity score stratification [20], propensity score matching with inverse  
176 probability of treatment weighting [21] and propensity score matching with stable inverse  
177 probability weighting [22]. The three arm sensitivity results involving glucagon-like peptide-1  
178 receptor agonist (GLP1a) using stabilized IPTW were conducted to test the association and  
179 choice amongst the novel second-line anti-diabetic medications. Patients with CKD stage 4/5  
180 (eGFR <30 mL/min/1.73m<sup>2</sup>), peritoneal dialysis or haemodialysis who may be  
181 contraindicated with SGLT2I were excluded in the sensitivity analysis. Sensitivity analysis  
182 results with consideration of one-year lag time effects was also conducted. The hazard ratio  
183 (HR), 95% CI and P-value were reported. Statistical significance was defined as P-value <0.05.  
184 All statistical analyses were performed with RStudio (Version: 1.1.456) and Python (Version:  
185 3.6), unless otherwise specified.

186

187

## 188 **Results**

### 189 *Basic characteristics*

190 In this territory-wide cohort study of 42491 male patients with T2DM treated with  
191 SGLT2I or DPP4I between 1st January 2015 and 31st December 2020 in Hong Kong, patients  
192 were followed up until 31st December 2020 or until their deaths (**Figure 1**). After exclusion,  
193 This cohort comprises 42129 male T2DM patients with a mean age of 61.0 years old (Standard  
194 deviation: 12.2), amongst which 17120 patients used SGLT2Is, and 25009 patients used  
195 DPP4Is.

196 The DPP4I and SGLT2I cohorts were comparable after matching with nearest  
197 neighbour search strategy with calliper of 0.1, and the proportional hazard assumption was

198 confirmed (**Supplementary Figure 1**). After the propensity score matching, the baseline  
199 characteristic of the SGLT2I and the DPP4I users were well-balanced, apart from  
200 sulphonylurea (SMD=0.17) and thiozolidinedone (SMD=0.11) (**Table 1**). The 2 unbalanced  
201 variables were adjusted in the Cox regression models and were included in the subgroup  
202 analysis. In the matched cohort, 162 patients (0.47%) developed new onset prostate cancer.  
203 The characteristics of patients are shown in **Table 1**.

204

### 205 *Primary analysis*

206 In the matched cohort, 60 SGLT2I users and 102 DPP4I users developed prostate  
207 cancer. In a total of 186869.4 person-year after a follow-up of a median of 5.61 years, the  
208 incidence of prostate cancer was lower amongst SGLT2I users (Incidence rate, IR: 0.63; 95%  
209 confidence interval, CI: 0.48-0.81) than in DPP4I (IR: 1.11; CI: 0.90-1.34) users. SGLT2  
210 inhibitors users had a 55% lower risk of prostate cancer compared to users of DPP-4 inhibitors  
211 after adjustment for demographics, comorbidities, number of prior hospitalisations, medication  
212 profile, renal function, glycaemic tests, and the duration of T2DM (HR: 0.45; 95% CI: 0.30-  
213 0.70,  $p=0.0003$ ) (**Table 2; Figure 2; Supplementary Table 2**). This was substantiated by the  
214 cumulative incidence curves stratified by SGLT2I versus DPP4I (**Figure 2**). The marginal  
215 effects plots demonstrated that SGLT2I was associated with lower risks of prostate cancer  
216 regardless of the duration of the diabetes diagnosis (**Supplementary Figure 2**), regardless of  
217 the number of prior hospitalizations (**Supplementary Figure 3**).

218 In a total of 187191.9 person-year, 260 DPP4I and 99 SGLT2I users passed away due  
219 to cancer. The incidence of cancer-related mortality was lower amongst SGLT2I users (IR:  
220 1.04; 95% CI: 0.85-1.27) compared to DPP4I users (IR: 2.81; 95% CI: 2.48-3.18). SGLT2I  
221 users had a 43% lower risk of cancer-related mortality after adjustment (HR: 0.55; 95% CI:  
222 0.50-0.61,  $p<0.0001$ ) compared to users of DPP4I. Besides, 1652 DPP4I users and 541 SGLT2I

223 users passed away. SGLT2I users had a 32% lower risk of all-cause mortality after adjustment  
224 (HR: 0.68; 95% CI: 0.46-0.78,  $p < 0.0001$ ) compared to users of DPP4I (**Table 2; Figure 2;**  
225 **Supplementary Table 2**).

226

### 227 *Subgroup analysis and sensitivity analysis*

228 The results of the subgroup analysis for the effects of SGLT2I and DPP4I on prostate  
229 cancer are shown in **Figure 3**. In the subgroup analysis, the results demonstrated that SGLT2I  
230 was associated with lower risks of prostate cancer amongst patients who were older (age  $> 65$ ).  
231 The results were consistent amongst patients with quartile 2 and 3 HbA1c. Besides, SGLT2I  
232 was associated with lower risks of prostate cancer amongst patients without prior heart failure,  
233 acute myocardial infarction, atrial fibrillation, peripheral vascular disease, cancer, and renal  
234 disease (all  $p < 0.05$ ). Furthermore, SGLT2I had lower risks of prostate cancer amongst patients  
235 without using alpha-blockers and antiplatelet (all  $p < 0.05$ ). SGLT2I was also associated with  
236 lower risks of prostate cancers amongst patients not on insulin, thiazolidinedione, GLP1a.  
237 However, those could be due to the insufficient sample size in the subgroups amongst the  
238 patients with the diseases or drug users. SGLT2I was also associated with lower risks of  
239 prostate cancer amongst metformin and sulphonylurea users. Indeed, SGLT2I was associated  
240 with higher risks of prostate cancer amongst patients without sulphonylurea (HR: 5.55; 95%  
241 CI: 1.26-22.43).

242

### 243 *Sensitivity analysis*

244 Sensitivity analyses were performed to confirm the predictability of the models. The  
245 results of the cause-specific hazard models, sub-distribution hazard models and different  
246 propensity score approaches demonstrated that different models do not change the point

247 estimates for both the primary and the secondary outcomes (all  $P < 0.05$ ) (**Supplementary**  
248 **Table 3**). A 3-arm analysis with the inclusion of GLP1a including patients only on SGLT2I,  
249 DPP4I, and GLP1a using stabilized IPTW was conducted (**Supplementary Table 4**). The  
250 results between DPP4I and SGLT2I remained consistent with the main result (all  $p < 0.05$ )  
251 (**Table 2**). However, it was found that SGLT2I was not associated with lower risks of prostate  
252 cancer compared to GLP1a. Excluding patients with CKD stage 4/5 ( $eGFR < 30$   
253  $mL/min/1.73m^2$ ), peritoneal dialysis or haemodialysis in the matched cohort likewise  
254 demonstrated that SGLT2I was associated with lower risks of prostate cancer compared to  
255 DPP4I (**Supplementary Table 5**). Meanwhile, the sensitivity analysis for 1-year lag time also  
256 demonstrated the same trend (all  $p < 0.05$ ) (**Supplementary Table 6**).

257

## 258 **Discussion**

259 In this territory-wide cohort study, we utilised real-world data to compare the  
260 association between SGLT2I, DPP4I and new-onset prostate cancer. Our results suggest that  
261 SGLT2I usage is associated with a lowered risk of new-onset prostate cancer than DPP4I usage.  
262 To the best of our knowledge, this is the first study to directly compare the relative association  
263 of two anti-diabetic medications on the incidence of prostate cancer.

264

### 265 *Comparison with previous studies*

266 The prevalence of prostate cancer in our study (IR: 86.7; 95% CI: 73.9-101 per 100,000  
267 person-year) is like the existing literature, which described an incidence of 65.1 per 100,000  
268 person-year amongst T2DM patients in the whole China [23-25]. It was believed that T2DM  
269 patients are associated with an increased prevalence of prostate cancer and adverse  
270 complications [26]. A meta-analysis suggests that diabetic patients are associated with a worse

271 prognosis [27]. On the contrary, some studies show no correlation or even an inverse  
272 association between T2DM and prostate cancer [28]. While the relationship between T2DM  
273 and prostate cancer remained controversial, the pleiotropic effects of the anti-diabetic drugs  
274 may provide us with new insights.

275         In our study, we found that SGLT2I users had 55% relatively lower risks of prostate  
276 cancer compared to DPP4I users. In a previous meta-analysis, it was demonstrated that there  
277 was no association between SGLT2I use and incidence of overall cancer [29]. A meta-analysis  
278 found that DPP4I and SGLT2I show no significant association with prostate cancer compared  
279 to placebo, while GLP1a agents demonstrated beneficial effects against prostate cancer [30].  
280 However, the 7 randomised control trials studies included regarding of SGLT2I were posthoc  
281 analyses without the primary aim of investigating prostate cancer, and the results demonstrated  
282 a relatively high heterogeneity ( $P_{\text{heterogeneity}} < 0.01$ ,  $I^2 = 97.3\%$ ). The meta-analysis did not  
283 directly compare the effects between SGLT2I and DPP4I. For the SGLT2I-DPP4I comparison,  
284 Rokszin *et al.* found no significant difference in the risk of prostate cancer (HR: 0.65; 95% CI:  
285 0.42-1.02) between the SGLT2I and DPP4I users [12]. However, the difference between the  
286 two arms remained worthy of investigation since the upper 95% CI of prostate cancer was close  
287 to 1 and that study followed up the patients for two years only, while in our study the follow-  
288 up duration median was 5.61 years.

289         The investigation of novel anti-diabetic medications was prompted by biological  
290 evidence in the current literature that underscores possible pleiotropic effects of SGLT2I and  
291 DPP4I on prostate cancer [31-33]. Interest in this area was prompted largely due to the fact that  
292 cancer cells utilise glucose as a primary source of fuel rather than fatty acids [34]. Moreover,  
293 evidence suggests that SGLT2I usage may inhibit the AMPK/mTOR pathway and induce  
294 apoptosis of cancerous cells [35]. Scafoglio *et al.* found abundant functional expression of  
295 SGLT2 on prostate adenocarcinomas; thereby inhibition of SGLT2 receptors reduces glucose

296 uptake and tumour progression in a xenograft model [36]. In a cell culture study, it was found  
297 that SGLT2I inhibited the clonogenic survival of prostate cancer cells [37]. In our study, the  
298 protective effects of SGLT2I were significant amongst patients without comorbidities but not  
299 those with prior comorbidities (heart failure, prior acute myocardial infarction, atrial fibrillation,  
300 peripheral vascular diseases). On one hand, while this could be explained by the limited sample  
301 size in the subgroups, we may also hypothesise that this could be explained partially by the  
302 SGLT2 expression level, as systemic diseases were suggested to increase the expression and  
303 activity of SGLT2 [38].

304         It must be noted that this does not necessarily mean that DPP4I is harmful in terms of  
305 new-onset prostate cancer, but it may as well be protective against prostate cancer compared  
306 to non-users. DPP4I and SGLT2I may modulate the risks of developing prostate cancer  
307 amongst T2DM patients. For DPP4I, previously, it was found that the use of saxagliptin and  
308 exenatide may decrease prostate cancer risk compared to sulfonylurea usage [39]. In another  
309 observational study, sitagliptin usage was associated with lower risks of prostate cancer  
310 amongst Asians with an odd ratio of 0.61 [40]. In addition, the Liraglutide Effect and Action  
311 in Diabetes: Evaluation of Cardiovascular Outcome Results (LEADER) trial revealed that  
312 malignant prostate neoplasms were present in a lower proportion of diabetic patients who use  
313 liraglutide compared to the placebo group [41]. Although the mechanism behind the observed  
314 effects of cancer growth inhibition remains ambiguous, the potential implications of SGLT2I  
315 and DPP4I usage as a part of cancer treatment continue to be revised in the growing body of  
316 literature.

317

318 *Clinical implications*

319           The potential antineoplastic benefit of SGLT2I and DPP4I on various cancer types have  
320 received global interest in recent years. As prostate cancer is one of the leading causes of  
321 cancer-related mortality among men, our findings could carry critical clinical implications in  
322 optimising treatment for T2DM male patients who might be at higher risk of developing  
323 prostate cancer. Thus, future studies in-cooperating randomised clinical trials are essential for  
324 clinicians to provide prevention of prostate cancer for diabetic patients. In the long term, this  
325 can reduce healthcare resource expenditure and refine clinical guidelines that govern treatment  
326 for prostate cancer and diabetes. This study has explored the relationship of data obtained from  
327 routine clinical practice in Hong Kong. This study suggests that SGLT2I may demonstrate a  
328 more significant overall protective effect against prostate cancer compared to DPP4I.  
329 Previously, metformin was suggested to be associated with reduced mortality amongst prostate  
330 cancer patients independent of diabetic control [42]. As such, SGLT2I may also play a role in  
331 altering the cancer outcomes and prognosis amongst prostate cancer patients.

332

### 333 *Limitations*

334           Several limitations should be noted in this study. Due to the observational nature of this  
335 study variables which predict prostate cancer, such as BMI, alcohol use, smoking,  
336 socioeconomic status, family history of prostate cancer, and screening PSA level, were not  
337 available from CDARS. This was attempted to be addressed by including laboratory results  
338 and comorbidities to infer the potential risk factors. To further compensate for this, we have  
339 matched our drug cohorts over an array of diseases and medications, adjusted the regression,  
340 and conducted a range of sensitivity analyses to minimise bias. Besides, there is potential  
341 under-coding, coding errors, and missing data leading to information bias due to the nature of  
342 the study. Moreover, the patient's level of compliance and drug exposure duration could not  
343 be standardised. Lastly, the retrospective design of our study necessitates the presentation of

344 associations but not causal links between SGLT2I versus DPP4I use and the risk of new-onset  
345 prostate cancer. Therefore, further research is warranted to explore the beneficial effects of  
346 SGLT2I.

347

## 348 **Conclusion**

349 In this population-based cohort study, SGLT2I users were associated with lower risks  
350 of new-onset prostate cancer than DPP4I users amongst T2DM patients. These results may  
351 have potential clinical implications in preventing cancer among T2DM patients. Further  
352 randomised controlled trials and mechanistic studies into prostate cancer with SGLT2I are  
353 needed.

354

## 355 **Funding source**

356 The authors received no funding for the research, authorship, and/or publication of this  
357 article.

358

## 359 **Conflicts of Interest**

360 None.

361

## 362 **Ethical approval statement**

363 This study was approved by the Institutional Review Board of the University of Hong  
364 Kong/Hospital Authority Hong Kong West Cluster (HKU/HA HKWC IRB) (UW-20-250), and  
365 New Territories East Cluster-Chinese University of Hong Kong (NTEC-UCHK) Clinical  
366 Research Ethics Committee (2018.309, 2018.643) and complied with the Declaration of  
367 Helsinki.



368

369 **Availability of data and materials**

370 Data are not available, as the data custodians (the Hospital Authority and the Department of  
371 Health of Hong Kong SAR) have not given permission for sharing due to patient confidentiality  
372 and privacy concerns. Local academic institutions, government departments, or  
373 nongovernmental organizations may apply for the access to data through the Hospital  
374 Authority's data sharing portal (<https://www3.ha.org.hk/data>).

375

376 **Acknowledgements**

377 None.

378

379 **Guarantor Statement**

380 All authors approved the final version of the manuscript. GT is the guarantor of this work and,  
381 as such, had full access to all the data in the study and takes responsibility for the integrity of  
382 the data and the accuracy of the data analysis.

383

384 **Author contributions**

385 Data analysis: OHIC, LL, JZ

386 Data review: OHIC, JSKC, RNCC, SL, GT, JZ

387 Data acquisition: OHIC, HHHP, SL

388 Data interpretation: OHIC, CTC, JSKC, BMYC, GT, JZ

389 Critical revision of manuscript: JSKC, RNCC, ALYH, ECD, KN, BMYC, GT, JZ

390 Supervision: BMYC, GT, JZ

391 Manuscript writing: OHIC, CTC, JSKC, ALYH, KKW

392 Manuscript revision: OHIC, JSKC, ALYH, ECD, KN, BMYC, GT, JZ

393

## 394 Reference

395

396 [1] Maruthur NM. The Growing Prevalence of Type 2 Diabetes: Increased Incidence or  
397 Improved Survival? *Current Diabetes Reports*. 2013;13:786-94.

398 [2] Leslie SW, Soon-Sutton TL, R IA, Sajjad H, Siref LE. Prostate Cancer. StatPearls.  
399 Treasure Island (FL): StatPearls Publishing

400 Copyright © 2023, StatPearls Publishing LLC.; 2023.

401 [3] Wang L, Lu B, He M, Wang Y, Wang Z, Du L. Prostate Cancer Incidence and Mortality:  
402 Global Status and Temporal Trends in 89 Countries From 2000 to 2019. *Front Public Health*.  
403 2022;10:811044.

404 [4] Li Q, Kuriyama S, Kakizaki M, Yan H, Sone T, Nagai M, et al. History of diabetes  
405 mellitus and the risk of prostate cancer: the Ohsaki Cohort Study. *Cancer Causes & Control*.  
406 2010;21:1025-32.

407 [5] Bansal D, Bhansali A, Kapil G, Undela K, Tiwari P. Type 2 diabetes and risk of prostate  
408 cancer: a meta-analysis of observational studies. *Prostate Cancer Prostatic Dis*. 2013;16:151-  
409 8, s1.

410 [6] Chung CT, Lakhani I, Chou OHI, Lee TTL, Dee C, Ng K, et al. Sodium-glucose  
411 cotransporter 2 inhibitors versus dipeptidyl peptidase 4 inhibitors on new-onset overall cancer  
412 in Type 2 diabetes mellitus: A population-based study. *Cancer Med*. 2023.

413 [7] Olokpa E, Mandape SN, Pratap S, Stewart LMV. Metformin regulates multiple signaling  
414 pathways within castration-resistant human prostate cancer cells. *BMC Cancer*.  
415 2022;22:1025.

416 [8] Clements A, Gao B, Yeap S, Wong M, Ali S, Gurney H. Metformin in prostate cancer:  
417 two for the price of one. *Annals of oncology*. 2011;22:2556-60.

418 [9] Lee YHA, Zhou J, Hui JMH, Liu X, Lee TTL, Hui K, et al. Risk of New-Onset Prostate  
419 Cancer for Metformin Versus Sulfonylurea Use in Type 2 Diabetes Mellitus: A Propensity  
420 Score-Matched Study. *J Natl Compr Canc Netw*. 2022;20:674-82.e15.

421 [10] Chen CB, Eskin M, Eurich DT, Majumdar SR, Johnson JA. Metformin, Asian ethnicity  
422 and risk of prostate cancer in type 2 diabetes: a systematic review and meta-analysis. *Bmc*  
423 *Cancer*. 2018;18:1-7.

424 [11] Crunkhorn S. Repurposing SGLT2 inhibitors. *Nature Reviews Drug Discovery*.  
425 2019;18:18-.

426 [12] Rokszin G, Kiss Z, Sütő G, Kempler P, Jermendy G, Fábrián I, et al. Sodium-Glucose  
427 Co-Transporter 2 Inhibitors May Change the Development of Urinary Tract and  
428 Hematological Malignancies as Compared With Dipeptidyl Peptidase-4 Inhibitors: Data of  
429 the Post-Hoc Analysis of a Nationwide Study. *Frontiers in Oncology*. 2021;11:725465.

430 [13] Lau IT. A Clinical Practice Guideline to Guide a System Approach to Diabetes Care in  
431 Hong Kong. *Diabetes Metab J*. 2017;41:81-8.

432 [14] Au PCM, Tan KCB, Lam DCL, Cheung BMY, Wong ICK, Kwok WC, et al.  
433 Association of Sodium-Glucose Cotransporter 2 Inhibitor vs Dipeptidyl Peptidase-4 Inhibitor  
434 Use With Risk of Incident Obstructive Airway Disease and Exacerbation Events Among  
435 Patients With Type 2 Diabetes in Hong Kong. *JAMA Netw Open*. 2023;6:e2251177.

436 [15] Zhou J, Liu X, Chou OH, Li L, Lee S, Wong WT, et al. Lower risk of gout in sodium  
437 glucose cotransporter 2 (SGLT2) inhibitors versus dipeptidyl peptidase-4 (DPP4) inhibitors  
438 in type-2 diabetes. *Rheumatology (Oxford)*. 2023;62:1501-10.

- 439 [16] Chou OHI, Zhou J, V Mui J, Satti DI, Chung CT, Tai Loy Lee T, et al. Lower risks of  
440 new-onset acute pancreatitis and pancreatic cancer in sodium glucose cotransporter 2  
441 (SGLT2) inhibitors compared to dipeptidyl peptidase-4 (DPP4) inhibitors: A propensity  
442 score-matched study with competing risk analysis. *Diabetes Epidemiology and Management*.  
443 2023;9:100115.
- 444 [17] Charlson ME, Carrozzino D, Guidi J, Patierno C. Charlson Comorbidity Index: A  
445 Critical Review of Clinimetric Properties. *Psychother Psychosom*. 2022;91:8-35.
- 446 [18] Soliman AR, Fathy A, Khashab S, Shaheen N. Comparison of abbreviated modification  
447 of diet in renal disease formula (aMDRD) and the Cockcroft-Gault adjusted for body surface  
448 (aCG) equations in stable renal transplant patients and living kidney donors. *Ren Fail*.  
449 2013;35:94-7.
- 450 [19] Lau KTK, Wong CKH, Au ICH, Lau WCY, Man KKC, Chui CSL, et al. Switching to  
451 Versus Addition of Incretin-Based Drugs Among Patients With Type 2 Diabetes Taking  
452 Sodium-Glucose Cotransporter-2 Inhibitors. *Journal of the American Heart Association*.  
453 2022;11:e023489.
- 454 [20] Austin PC. An Introduction to Propensity Score Methods for Reducing the Effects of  
455 Confounding in Observational Studies. *Multivariate Behav Res*. 2011;46:399-424.
- 456 [21] Austin PC, Stuart EA. Moving towards best practice when using inverse probability of  
457 treatment weighting (IPTW) using the propensity score to estimate causal treatment effects in  
458 observational studies. *Stat Med*. 2015;34:3661-79.
- 459 [22] Avagyan V, Vansteelandt S. Stable inverse probability weighting estimation for  
460 longitudinal studies. *Scandinavian Journal of Statistics*. 2021;48:1046-67.
- 461 [23] Zhang L, Yang BX, Zhang HT, Wang JG, Wang HL, Zhao XJ. Prostate cancer: an  
462 emerging threat to the health of aging men in Asia. *Asian J Androl*. 2011;13:574-8.
- 463 [24] Sung H, Ferlay J, Siegel RL, Laversanne M, Soerjomataram I, Jemal A, et al. Global  
464 Cancer Statistics 2020: GLOBOCAN Estimates of Incidence and Mortality Worldwide for 36  
465 Cancers in 185 Countries. *CA: A Cancer Journal for Clinicians*. 2021;71:209-49.
- 466 [25] Gu Y, Hou X, Zheng Y, Wang C, Zhang L, Li J, et al. Incidence and Mortality Risks of  
467 Cancer in Patients with Type 2 Diabetes: A Retrospective Study in Shanghai, China. *Int J*  
468 *Environ Res Public Health*. 2016;13.
- 469 [26] Currie CJ, Poole CD, Jenkins-Jones S, Gale EA, Johnson JA, Morgan CL. Mortality  
470 after incident cancer in people with and without type 2 diabetes: impact of metformin on  
471 survival. *Diabetes care*. 2012;35:299-304.
- 472 [27] Lee J, Giovannucci E, Jeon JY. Diabetes and mortality in patients with prostate cancer: a  
473 meta-analysis. *Springerplus*. 2016;5:1548.
- 474 [28] Feng X, Song M, Preston MA, Ma W, Hu Y, Pernar CH, et al. The association of  
475 diabetes with risk of prostate cancer defined by clinical and molecular features. *British*  
476 *Journal of Cancer*. 2020;123:657-65.
- 477 [29] Pelletier R, Ng K, Alkabbani W, Labib Y, Mourad N, Gamble JM. The association of  
478 sodium-glucose cotransporter 2 inhibitors with cancer: An overview of quantitative  
479 systematic reviews. *Endocrinol Diabetes Metab*. 2020;3:e00145.
- 480 [30] Cui H, Wang Y, Yang S, He G, Jiang Z, Gang X, et al. Antidiabetic medications and the  
481 risk of prostate cancer in patients with diabetes mellitus: A systematic review and meta-  
482 analysis. *Pharmacological Research*. 2022:106094.
- 483 [31] Lu Z, Qi L, Bo XJ, Liu GD, Wang JM, Li G. Expression of CD26 and CXCR4 in  
484 prostate carcinoma and its relationship with clinical parameters. *J Res Med Sci*. 2013;18:647-  
485 52.
- 486 [32] Bekele K, Smith T, Stewart L. The SGLT2 Inhibitor Canagliflozin Reduces Androgen  
487 Receptor Expression and Nuclear Localization of Beta-Catenin in Human Prostate Cancer  
488 Cells. 2022.

- 489 [33] Benedetti R, Benincasa G, Glass K, Chianese U, Vietri MT, Congi R, et al. Effects of  
490 novel SGLT2 inhibitors on cancer incidence in hyperglycemic patients: a meta-analysis of  
491 randomized clinical trials. *Pharmacological Research*. 2022;175:106039.
- 492 [34] Nakano D, Kawaguchi T, Iwamoto H, Hayakawa M, Koga H, Torimura T. Effects of  
493 canagliflozin on growth and metabolic reprogramming in hepatocellular carcinoma cells:  
494 Multi-omics analysis of metabolomics and absolute quantification proteomics (iMPAQT).  
495 *PLoS One*. 2020;15:e0232283.
- 496 [35] Zhou J, Zhu J, Yu SJ, Ma HL, Chen J, Ding XF, et al. Sodium-glucose co-transporter-2  
497 (SGLT-2) inhibition reduces glucose uptake to induce breast cancer cell growth arrest  
498 through AMPK/mTOR pathway. *Biomed Pharmacother*. 2020;132:110821.
- 499 [36] Scafoglio C, Hirayama BA, Kepe V, Liu J, Ghezzi C, Satyamurthy N, et al. Functional  
500 expression of sodium-glucose transporters in cancer. *Proceedings of the National Academy of*  
501 *Sciences*. 2015;112:E4111-E9.
- 502 [37] Villani LA, Smith BK, Marcinko K, Ford RJ, Broadfield LA, Green AE, et al. The  
503 diabetes medication Canagliflozin reduces cancer cell proliferation by inhibiting  
504 mitochondrial complex-I supported respiration. *Molecular metabolism*. 2016;5:1048-56.
- 505 [38] Wilcox CS. Antihypertensive and Renal Mechanisms of SGLT2 (Sodium-Glucose  
506 Linked Transporter 2) Inhibitors. *Hypertension*. 2020;75:894-901.
- 507 [39] Lu S, Yin H, Yu OHY, Azoulay L. Incretin-Based Drugs and the Incidence of Prostate  
508 Cancer Among Patients With Type 2 Diabetes. *Epidemiology*. 2022;33:563-71.
- 509 [40] Tseng CH. Sitagliptin may reduce prostate cancer risk in male patients with type 2  
510 diabetes. *Oncotarget*. 2017;8:19057-64.
- 511 [41] Nauck MA, Jensen TJ, Rosenkilde C, Calanna S, Buse JB. Neoplasms Reported With  
512 Liraglutide or Placebo in People With Type 2 Diabetes: Results From the LEADER  
513 Randomized Trial. *Diabetes Care*. 2018;41:1663-71.
- 514 [42] Lee YHA, Hui JMH, Chan JSK, Liu K, Dee EC, Ng K, et al. Metformin use and  
515 mortality in Asian, diabetic patients with prostate cancer on androgen deprivation therapy: A  
516 population-based study. *Prostate*. 2023;83:119-27.
- 517  
518  
519  
520

**Table 1. Baseline and clinical characteristics of patients with SGLT2I v.s. DPP4I use before and after propensity score matching (1:1).**

\* for SMD $\geq$ 0.1; SGLT2I: sodium glucose cotransporter-2 inhibitor; DPP4I: dipeptidyl peptidase-4 inhibitor; MDRD: modification of diet in renal disease; ACEI: angiotensin-converting enzyme inhibitors; ARB: angiotensin II receptor blockers.

Characteristics	Before matching				After matching			
	All (N=42129) Mean(SD);N or Count(%)	SGLT2I (N=17120) Mean(SD);N or Count(%)	DPP4I (N=25009) Mean(SD);N or Count(%)	SMD	All (N=34240) Mean(SD);N or Count(%)	SGLT2I (N=17120) Mean(SD);N or Count(%)	DPP4I (N=17120) Mean(SD);N or Count(%)	SMD
<b>Demographics</b>								
Baseline age, years	61.0(12.2);n=42129	57.3(10.9);n=17120	63.5(12.4);n=25009	0.53*	57.7(10.7);n=34240	57.3(10.9);n=17120	58.2(10.5);n=17120	0.08
<b>Past comorbidities</b>								
Charlson standard comorbidity index	1.9(1.5);n=42129	1.5(1.2);n=17120	2.2(1.6);n=25009	0.47*	1.5(1.2);n=34240	1.5(1.2);n=17120	1.6(1.2);n=17120	0.05
Duration from earliest diabetes mellitus diagnosis date to baseline date, years	6.5(4.9);n=42129	6.8(4.9);n=17120	6.3(4.9);n=25009	0.1	6.7(5.0);n=34240	6.8(4.9);n=17120	6.5(5.1);n=17120	0.07
Number of prior hospitalizations	1.2(0.8);n=42129	1.3(1.1);n=17120	1.2(0.6);n=25009	0.17	1.3(1.0);n=34240	1.3(1.1);n=17120	1.2(0.9);n=17120	0.08
Hyperlipidaemia	30441(72.25%)	12812(74.83%)	17629(70.49%)	0.1	25853(75.50%)	12812(74.83%)	13041(76.17%)	0.03
Hypertension	25490(60.50%)	15280(89.25%)	10210(40.82%)	1.18*	24440(71.37%)	12280(71.72%)	12160(71.02%)	0.02
Urinary tract infection	1493(3.54%)	415(2.42%)	1078(4.31%)	0.1	807(2.35%)	415(2.42%)	392(2.28%)	0.01
Cancer	731(1.73%)	209(1.22%)	522(2.08%)	0.07	415(1.21%)	209(1.22%)	206(1.20%)	<0.01
Autoimmune disease	330(0.78%)	137(0.80%)	193(0.77%)	<0.01	272(0.79%)	137(0.80%)	135(0.78%)	<0.01
Heart failure	1328(3.15%)	495(2.89%)	833(3.33%)	0.03	979(2.85%)	495(2.89%)	484(2.82%)	<0.01
Ischemic heart disease	5200(12.34%)	2677(15.63%)	2523(10.08%)	0.17	5013(14.64%)	2577(15.05%)	2436(14.22%)	0.02
Acute myocardial infarction	1541(3.65%)	771(4.50%)	770(3.07%)	0.07	1513(4.41%)	771(4.50%)	742(4.33%)	0.01

Peripheral vascular disease	341(0.80%)	98(0.57%)	243(0.97%)	0.05	196(0.57%)	98(0.57%)	98(0.57%)	<0.01
Atrial fibrillation	993(2.35%)	370(2.16%)	623(2.49%)	0.02	724(2.11%)	370(2.16%)	354(2.06%)	0.01
Stroke/transient ischemic attack	1259(2.98%)	423(2.47%)	836(3.34%)	0.05	836(2.44%)	423(2.47%)	413(2.41%)	<0.01
Diabetic retinopathy	2723(6.46%)	1019(5.95%)	1704(6.81%)	0.04	1926(5.62%)	1019(5.95%)	907(5.29%)	0.03
Diabetic nephropathy	528(1.25%)	116(0.67%)	412(1.64%)	0.09	232(0.67%)	116(0.67%)	116(0.67%)	<0.01
Diabetic neuropathy	872(2.06%)	311(1.81%)	561(2.24%)	0.03	601(1.75%)	311(1.81%)	290(1.69%)	0.01
Renal diseases	3269(7.75%)	899(5.25%)	2370(9.47%)	0.16	1704(4.97%)	899(5.25%)	805(4.70%)	0.03
Liver diseases	1741(4.13%)	807(4.71%)	934(3.73%)	0.05	1520(4.43%)	807(4.71%)	713(4.16%)	0.03
Chronic obstructive pulmonary disease	466(1.10%)	122(0.71%)	344(1.37%)	0.07	243(0.70%)	122(0.71%)	121(0.70%)	<0.01
<b>Medications</b>								
Number of anti-diabetic drugs	9.5(26.7);n=42129	12.7(32.8);n=17120	7.3(21.3);n=25009	0.2	12.7(32.8);n=34240	12.7(32.8);n=17120	12.8(32.7);n=17120	<0.01
Metformin	37650(89.36%)	15922(93.00%)	21728(86.88%)	0.20*	31909(93.19%)	15922(93.00%)	15987(93.38%)	0.02
Sulphonylurea	32456(77.03%)	12393(72.38%)	20063(80.22%)	0.19	26040(76.05%)	12393(72.38%)	13647(79.71%)	0.17*
Insulin	21040(49.94%)	8455(49.38%)	12585(50.32%)	0.02	16773(48.98%)	8455(49.38%)	8318(48.58%)	0.02
Acarbose	1402(3.32%)	640(3.73%)	762(3.04%)	0.04	1235(3.60%)	640(3.73%)	595(3.47%)	0.01
Thiazolidinedione	8506(20.19%)	4448(25.98%)	4058(16.22%)	0.24*	8131(23.74%)	4448(25.98%)	3683(21.51%)	0.11*
Glucagon-like peptide-1 receptor agonists	2666(6.32%)	1159(6.76%)	1507(6.02%)	0.03	2250(6.57%)	1159(6.76%)	1091(6.37%)	0.02
Statins and fibrates	26683(63.33%)	12716(74.27%)	13967(55.84%)	0.39*	25225(73.67%)	12716(74.27%)	12509(73.06%)	0.03
ACEI/ARB	22307(52.94%)	10563(61.69%)	11744(46.95%)	0.30*	21120(61.68%)	10563(61.69%)	10557(61.66%)	<0.01
Diuretics	12276(29.13%)	5536(32.33%)	6740(26.95%)	0.12	11411(33.32%)	5536(32.33%)	5875(34.31%)	0.04
Beta-blockers	11878(28.19%)	5048(29.48%)	6830(27.31%)	0.05	10565(30.85%)	5048(29.48%)	5517(32.22%)	0.06

Calcium channel blockers (dihydropyridine)	21531(51.10%)	9919(57.93%)	11612(46.43%)	0.23*	19921(58.18%)	9919(57.93%)	10002(58.42%)	0.01
Calcium channel blocker (non-dihydropyridine)	11656(27.66%)	5014(29.28%)	6642(26.55%)	0.06	9795(28.60%)	5014(29.28%)	4781(27.92%)	0.03
Systemic steroids	269(0.63%)	126(0.73%)	143(0.57%)	0.02	252(0.73%)	126(0.73%)	126(0.73%)	<0.01
Antiplatelets	13825(32.81%)	6401(37.38%)	7424(29.68%)	0.16	12869(37.58%)	6401(37.38%)	6468(37.78%)	0.01
Alpha-blockers	7488(17.77%)	2624(15.32%)	4864(19.44%)	0.11	5033(14.69%)	2624(15.32%)	2409(14.07%)	0.04
Aspirin	12408(29.45%)	5963(34.83%)	6445(25.77%)	0.2	11902(34.76%)	5963(34.83%)	5939(34.69%)	<0.01
<b>Calculated biomarker</b>								
Abbreviated MDRD, mL/min/1.73m <sup>2</sup>	80.8(26.9);n=34221	88.6(22.6);n=14077	75.4(28.3);n=20144	0.51*	87.5(23.2);n=28366	88.6(22.6);n=14077	86.4(23.7);n=14289	0.09
<b>Renal function tests</b>								
Creatinine, umol/L	103.7(79.5);n=34221	87.9(29.0);n=14077	114.8(99.2);n=20144	0.37*	89.7(37.2);n=28366	87.9(29.0);n=14077	91.4(43.8);n=14289	0.09
<b>Lipid tests</b>								
Triglyceride, mmol/L	1.7(1.8);n=32353	1.9(2.0);n=13493	1.7(1.6);n=18860	0.1	1.9(2.0);n=27134	1.85(1.96);n=13493	1.87(2.08);n=13641	0.01
Low-density lipoprotein, mmol/L	2.4(0.8);n=31726	2.3(0.8);n=13219	2.4(0.8);n=18507	0.04	2.4(0.8);n=26546	2.3(0.8);n=13219	2.4(0.8);n=13327	0.05
High-density lipoprotein, mmol/L	1.1(0.3);n=32298	1.09(0.28);n=13468	1.14(0.31);n=18830	0.14	1.1(0.3);n=27093	1.09(0.28);n=13468	1.1(0.29);n=13625	0.04
Total cholesterol, mmol/L	4.2(1.0);n=32387	4.22(1.01);n=13510	4.23(0.99);n=18877	0.01	4.3(1.0);n=27166	4.2(1.0);n=13510	4.3(1.0);n=13656	0.06
<b>Glucose tests</b>								
Haemoglobin A1C, %	8.1(1.6);n=33538	8.3(1.6);n=13824	8.0(1.6);n=19714	0.18	8.3(1.6);n=27789	8.25(1.61);n=13824	8.26(1.58);n=13965	0.01
Fasting glucose, mmol/L	9.0(3.9);n=30477	9.2(3.6);n=12691	8.8(4.2);n=17786	0.08	9.2(3.8);n=25612	9.2(3.6);n=12691	9.3(4.1);n=12921	0.04

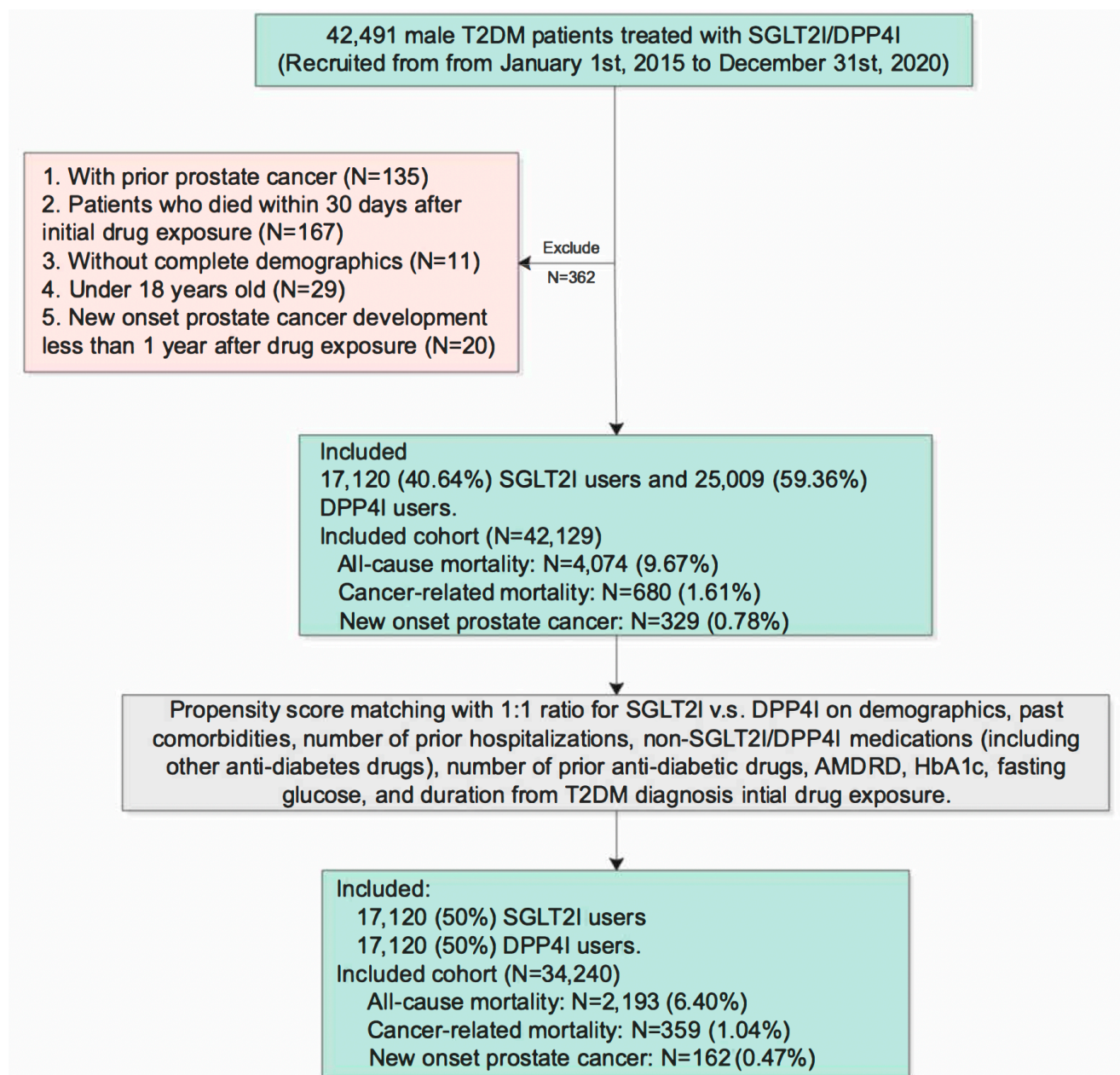
**Table 2. Incidence rate (IR) per 1000 person-year of new onset prostate cancer, cancer-related mortality, and all-cause mortality in the cohort before and after 1:1 propensity score matching.**

SGLT2I: sodium glucose cotransporter-2 inhibitor; DPP4I: dipeptidyl peptidase-4 inhibitor; MDRD: modification of diet in renal disease

Adjusted for significant demographics, past comorbidities, duration of diabetes mellitus, number of prior hospitalizations, number of anti-diabetic drugs, non-SGLT2I/DPP4I medications, abbreviated MDRD, HbA1c, fasting glucose.

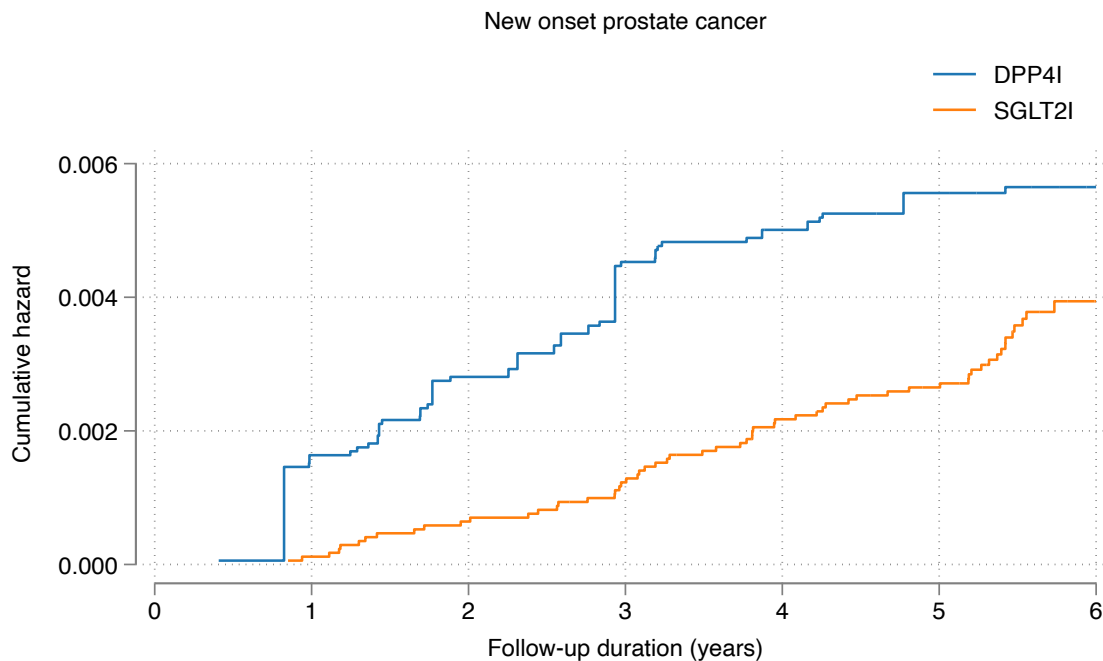
Prostate cancer	Number of patients	Number of events	Total person-year	Follow-up duration, years [95% CI]	Incidence [95% CI]	Adjusted hazard ratio [95% CI]	P-value
DPP4I	17120	102	92074.6	5.6 [5.31-5.83]	1.11[0.90-1.34]	1 [reference]	NA
SGLT2I	17120	60	94794.8	5.62 [5.35-5.83]	0.63[0.48-0.81]	0.45[0.30-0.70]	0.0003
Cancer-related mortality	Number of patients	Number of events	Total person-year	Follow-up duration, years [95% CI]	Incidence [95% CI]	Adjusted hazard ratio [95% CI]	P value
DPP4I	17120	260	92299.7	5.6 [5.31-5.83]	2.81[2.48-3.18]	1 [reference]	NA
SGLT2I	17120	99	94892.2	5.62 [5.33-5.82]	1.04[0.85-1.27]	0.57[0.40-0.76]	<0.0001
All-cause mortality	Number of patients	Number of events	Total person-year	Follow-up duration, years [95% CI]	Incidence [95% CI]	Adjusted hazard ratio [95% CI]	P value
DPP4I	17120	1652	92299.7	5.6 [5.31-5.83]	17.9[17.0-18.8]	1 [reference]	NA
SGLT2I	17120	541	94892.2	5.62 [5.35-5.82]	5.70[5.23-6.20]	0.68[0.46-0.78]	<0.0001





**Figure 1. Procedures of data processing for the study cohort**

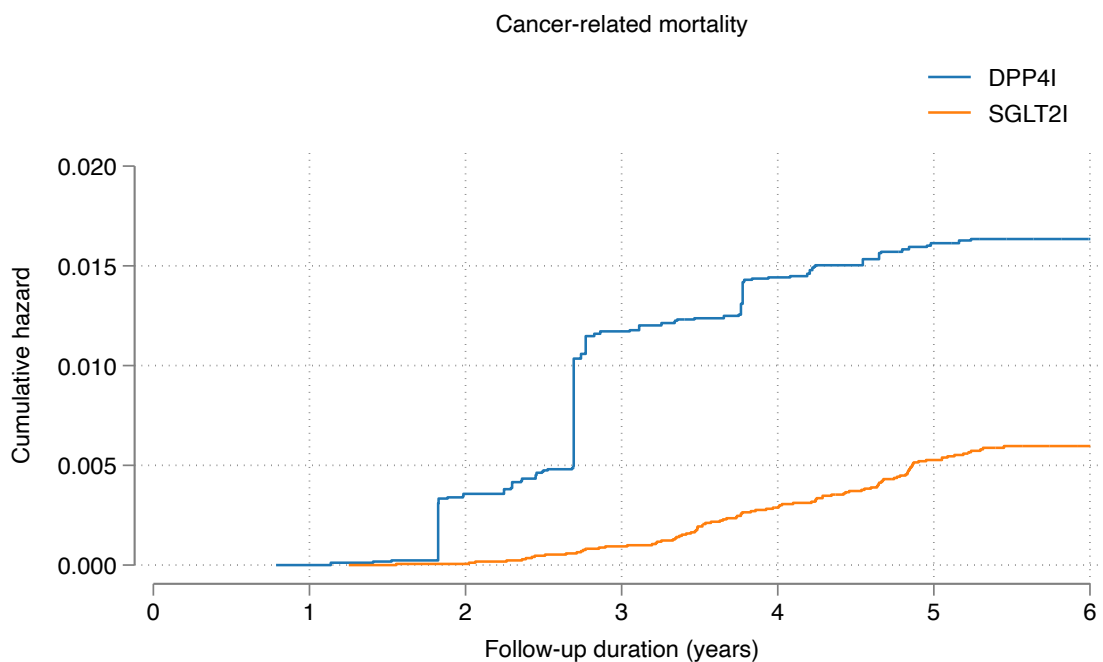
SGLT2I: Sodium-glucose cotransporter-2 inhibitors; DPP4I: Dipeptidyl peptidase-4 inhibitors. MDRD: modification of diet in renal disease.



Number at risk

DPP4I	17120	17089	17015	16755	16471	16146	135
SGLT2I	17120	17118	17091	17010	16864	16621	100

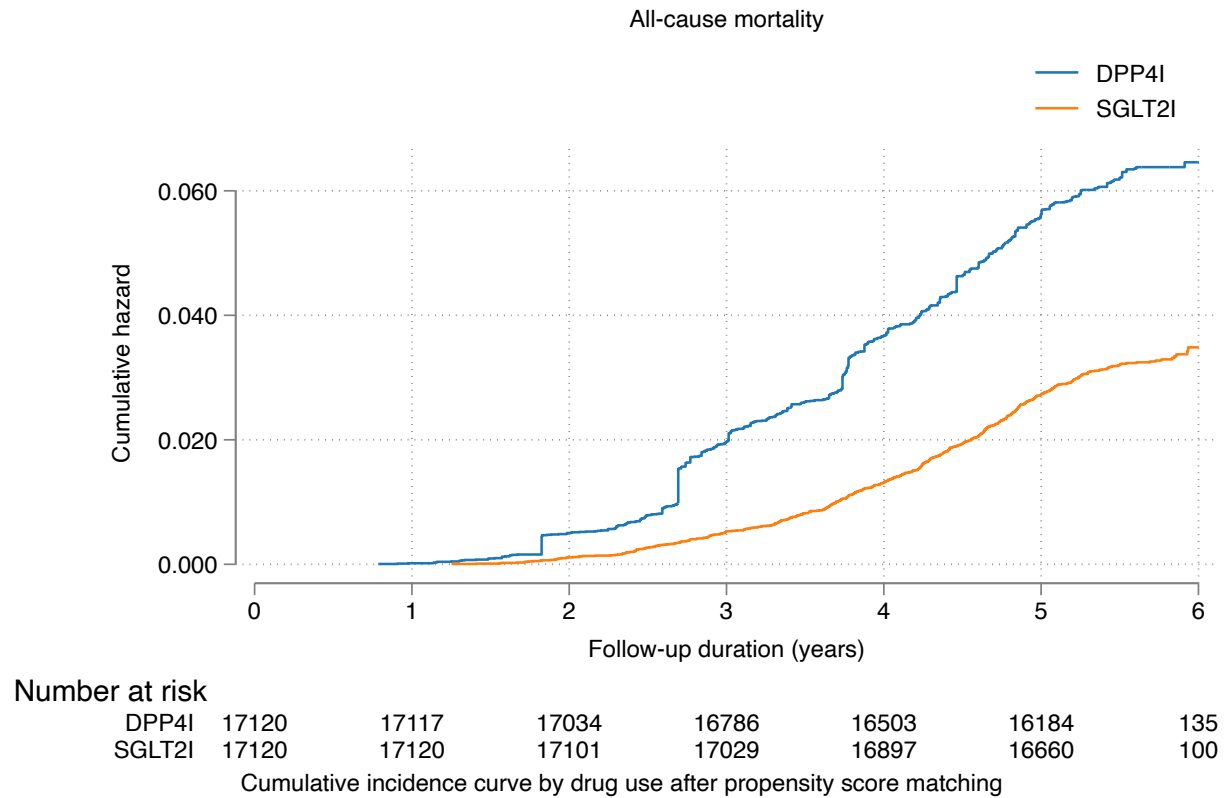
Cumulative incidence curve by drug use after propensity score matching



Number at risk

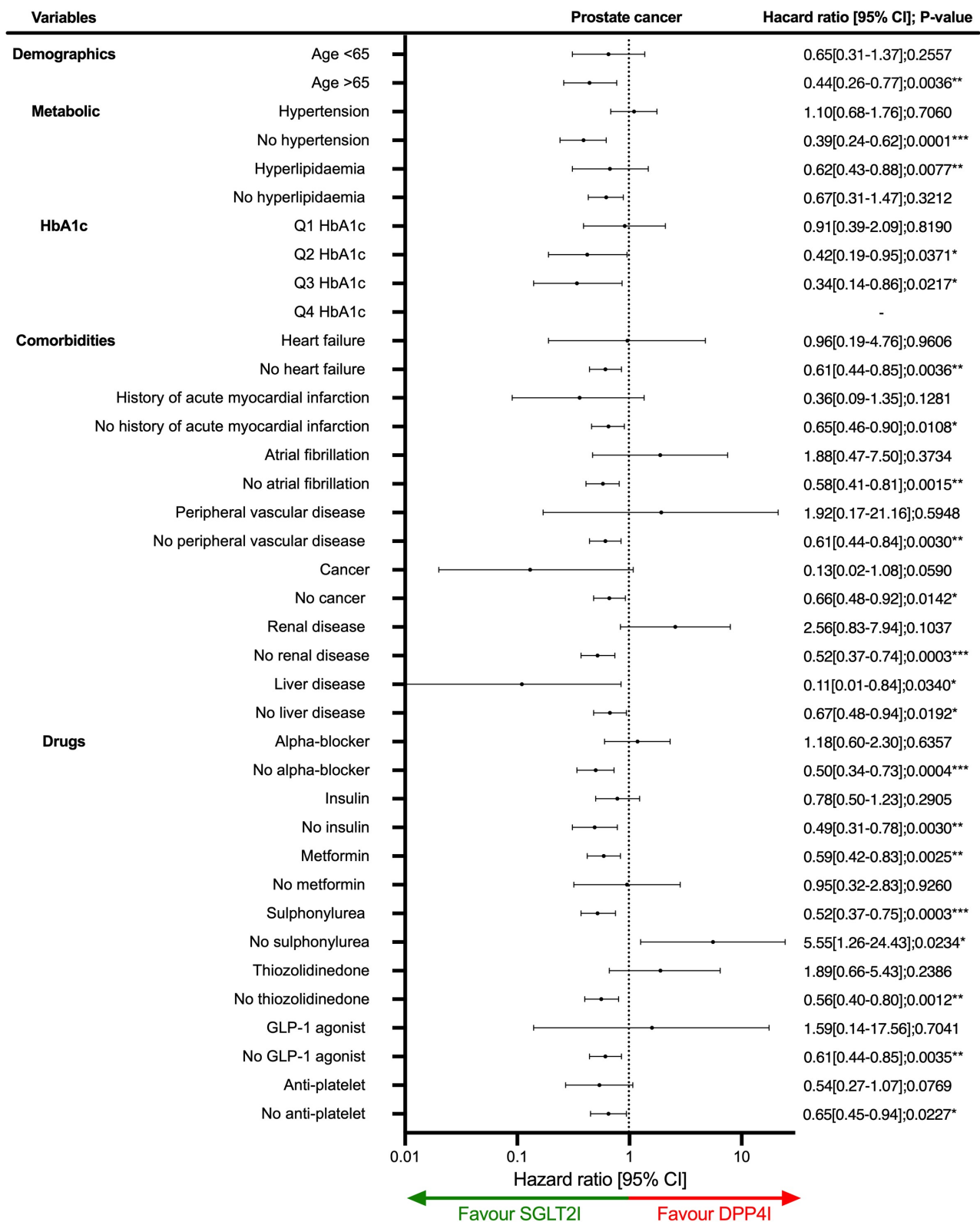
DPP4I	17120	17117	17034	16786	16503	16184	135
SGLT2I	17120	17120	17101	17029	16897	16660	100

Cumulative incidence curve by drug use after propensity score matching



**Figure 2. Cumulative incidence curves for new onset prostate cancer, cancer-related mortality, and all-cause mortality stratified by drug exposure effects of SGLT2I and DPP4I after propensity score matching (1:1).**

SGLT2I: Sodium-glucose cotransporter-2 inhibitors; DPP4I: Dipeptidyl peptidase-4 inhibitors



**Figure 3. Subgroup analyses for SGLT2i v.s. DPP4i exposure predict prostate cancer in the matched cohort.**

SGLT2i: Sodium-glucose cotransporter-2 inhibitors; DPP4i: Dipeptidyl peptidase-4 inhibitors. Q1: Quartile 1; Q2: Quartile 2; Q3: Quartile 3; Q4: Quartile 4; CI: Confidence interval

**Table 1. Baseline and clinical characteristics of patients with SGLT2I v.s. DPP4I use before and after propensity score matching (1:1).**

\* for SMD $\geq$ 0.1; SGLT2I: sodium glucose cotransporter-2 inhibitor; DPP4I: dipeptidyl peptidase-4 inhibitor; MDRD: modification of diet in renal disease; ACEI: angiotensin-converting enzyme inhibitors; ARB: angiotensin II receptor blockers.

Characteristics	Before matching				After matching			
	All (N=42129) Mean(SD);N or Count(%)	SGLT2I (N=17120) Mean(SD);N or Count(%)	DPP4I (N=25009) Mean(SD);N or Count(%)	SMD	All (N=34240) Mean(SD);N or Count(%)	SGLT2I (N=17120) Mean(SD);N or Count(%)	DPP4I (N=17120) Mean(SD);N or Count(%)	SMD
<b>Demographics</b>								
Baseline age, years	61.0(12.2);n=42129	57.3(10.9);n=17120	63.5(12.4);n=25009	0.53*	57.7(10.7);n=34240	57.3(10.9);n=17120	58.2(10.5);n=17120	0.08
<b>Past comorbidities</b>								
Charlson standard comorbidity index	1.9(1.5);n=42129	1.5(1.2);n=17120	2.2(1.6);n=25009	0.47*	1.5(1.2);n=34240	1.5(1.2);n=17120	1.6(1.2);n=17120	0.05
Duration from earliest diabetes mellitus diagnosis date to baseline date, years	6.5(4.9);n=42129	6.8(4.9);n=17120	6.3(4.9);n=25009	0.1	6.7(5.0);n=34240	6.8(4.9);n=17120	6.5(5.1);n=17120	0.07
Number of prior hospitalizations	1.2(0.8);n=42129	1.3(1.1);n=17120	1.2(0.6);n=25009	0.17	1.3(1.0);n=34240	1.3(1.1);n=17120	1.2(0.9);n=17120	0.08
Hyperlipidaemia	30441(72.25%)	12812(74.83%)	17629(70.49%)	0.1	25853(75.50%)	12812(74.83%)	13041(76.17%)	0.03
Hypertension	25490(60.50%)	15280(89.25%)	10210(40.82%)	1.18*	24440(71.37%)	12280(71.72%)	12160(71.02%)	0.02
Urinary tract infection	1493(3.54%)	415(2.42%)	1078(4.31%)	0.1	807(2.35%)	415(2.42%)	392(2.28%)	0.01
Cancer	731(1.73%)	209(1.22%)	522(2.08%)	0.07	415(1.21%)	209(1.22%)	206(1.20%)	<0.01
Autoimmune disease	330(0.78%)	137(0.80%)	193(0.77%)	<0.01	272(0.79%)	137(0.80%)	135(0.78%)	<0.01
Heart failure	1328(3.15%)	495(2.89%)	833(3.33%)	0.03	979(2.85%)	495(2.89%)	484(2.82%)	<0.01
Ischemic heart disease	5200(12.34%)	2677(15.63%)	2523(10.08%)	0.17	5013(14.64%)	2577(15.05%)	2436(14.22%)	0.02
Acute myocardial infarction	1541(3.65%)	771(4.50%)	770(3.07%)	0.07	1513(4.41%)	771(4.50%)	742(4.33%)	0.01

Peripheral vascular disease	341(0.80%)	98(0.57%)	243(0.97%)	0.05	196(0.57%)	98(0.57%)	98(0.57%)	<0.01
Atrial fibrillation	993(2.35%)	370(2.16%)	623(2.49%)	0.02	724(2.11%)	370(2.16%)	354(2.06%)	0.01
Stroke/transient ischemic attack	1259(2.98%)	423(2.47%)	836(3.34%)	0.05	836(2.44%)	423(2.47%)	413(2.41%)	<0.01
Diabetic retinopathy	2723(6.46%)	1019(5.95%)	1704(6.81%)	0.04	1926(5.62%)	1019(5.95%)	907(5.29%)	0.03
Diabetic nephropathy	528(1.25%)	116(0.67%)	412(1.64%)	0.09	232(0.67%)	116(0.67%)	116(0.67%)	<0.01
Diabetic neuropathy	872(2.06%)	311(1.81%)	561(2.24%)	0.03	601(1.75%)	311(1.81%)	290(1.69%)	0.01
Renal diseases	3269(7.75%)	899(5.25%)	2370(9.47%)	0.16	1704(4.97%)	899(5.25%)	805(4.70%)	0.03
Liver diseases	1741(4.13%)	807(4.71%)	934(3.73%)	0.05	1520(4.43%)	807(4.71%)	713(4.16%)	0.03
Chronic obstructive pulmonary disease	466(1.10%)	122(0.71%)	344(1.37%)	0.07	243(0.70%)	122(0.71%)	121(0.70%)	<0.01
<b>Medications</b>								
Number of anti-diabetic drugs	9.5(26.7);n=42129	12.7(32.8);n=17120	7.3(21.3);n=25009	0.2	12.7(32.8);n=34240	12.7(32.8);n=17120	12.8(32.7);n=17120	<0.01
Metformin	37650(89.36%)	15922(93.00%)	21728(86.88%)	0.20*	31909(93.19%)	15922(93.00%)	15987(93.38%)	0.02
Sulphonylurea	32456(77.03%)	12393(72.38%)	20063(80.22%)	0.19	26040(76.05%)	12393(72.38%)	13647(79.71%)	0.17*
Insulin	21040(49.94%)	8455(49.38%)	12585(50.32%)	0.02	16773(48.98%)	8455(49.38%)	8318(48.58%)	0.02
Acarbose	1402(3.32%)	640(3.73%)	762(3.04%)	0.04	1235(3.60%)	640(3.73%)	595(3.47%)	0.01
Thiazolidinedione	8506(20.19%)	4448(25.98%)	4058(16.22%)	0.24*	8131(23.74%)	4448(25.98%)	3683(21.51%)	0.11*
Glucagon-like peptide-1 receptor agonists	2666(6.32%)	1159(6.76%)	1507(6.02%)	0.03	2250(6.57%)	1159(6.76%)	1091(6.37%)	0.02
Statins and fibrates	26683(63.33%)	12716(74.27%)	13967(55.84%)	0.39*	25225(73.67%)	12716(74.27%)	12509(73.06%)	0.03
ACEI/ARB	22307(52.94%)	10563(61.69%)	11744(46.95%)	0.30*	21120(61.68%)	10563(61.69%)	10557(61.66%)	<0.01
Diuretics	12276(29.13%)	5536(32.33%)	6740(26.95%)	0.12	11411(33.32%)	5536(32.33%)	5875(34.31%)	0.04
Beta-blockers	11878(28.19%)	5048(29.48%)	6830(27.31%)	0.05	10565(30.85%)	5048(29.48%)	5517(32.22%)	0.06

Calcium channel blockers (dihydropyridine)	21531(51.10%)	9919(57.93%)	11612(46.43%)	0.23*	19921(58.18%)	9919(57.93%)	10002(58.42%)	0.01
Calcium channel blocker (non-dihydropyridine)	11656(27.66%)	5014(29.28%)	6642(26.55%)	0.06	9795(28.60%)	5014(29.28%)	4781(27.92%)	0.03
Systemic steroids	269(0.63%)	126(0.73%)	143(0.57%)	0.02	252(0.73%)	126(0.73%)	126(0.73%)	<0.01
Antiplatelets	13825(32.81%)	6401(37.38%)	7424(29.68%)	0.16	12869(37.58%)	6401(37.38%)	6468(37.78%)	0.01
Alpha-blockers	7488(17.77%)	2624(15.32%)	4864(19.44%)	0.11	5033(14.69%)	2624(15.32%)	2409(14.07%)	0.04
Aspirin	12408(29.45%)	5963(34.83%)	6445(25.77%)	0.2	11902(34.76%)	5963(34.83%)	5939(34.69%)	<0.01
<b>Calculated biomarker</b>								
Abbreviated MDRD, mL/min/1.73m <sup>2</sup>	80.8(26.9);n=34221	88.6(22.6);n=14077	75.4(28.3);n=20144	0.51*	87.5(23.2);n=28366	88.6(22.6);n=14077	86.4(23.7);n=14289	0.09
<b>Renal function tests</b>								
Creatinine, umol/L	103.7(79.5);n=34221	87.9(29.0);n=14077	114.8(99.2);n=20144	0.37*	89.7(37.2);n=28366	87.9(29.0);n=14077	91.4(43.8);n=14289	0.09
<b>Lipid tests</b>								
Triglyceride, mmol/L	1.7(1.8);n=32353	1.9(2.0);n=13493	1.7(1.6);n=18860	0.1	1.9(2.0);n=27134	1.85(1.96);n=13493	1.87(2.08);n=13641	0.01
Low-density lipoprotein, mmol/L	2.4(0.8);n=31726	2.3(0.8);n=13219	2.4(0.8);n=18507	0.04	2.4(0.8);n=26546	2.3(0.8);n=13219	2.4(0.8);n=13327	0.05
High-density lipoprotein, mmol/L	1.1(0.3);n=32298	1.09(0.28);n=13468	1.14(0.31);n=18830	0.14	1.1(0.3);n=27093	1.09(0.28);n=13468	1.1(0.29);n=13625	0.04
Total cholesterol, mmol/L	4.2(1.0);n=32387	4.22(1.01);n=13510	4.23(0.99);n=18877	0.01	4.3(1.0);n=27166	4.2(1.0);n=13510	4.3(1.0);n=13656	0.06
<b>Glucose tests</b>								
Haemoglobin A1C, %	8.1(1.6);n=33538	8.3(1.6);n=13824	8.0(1.6);n=19714	0.18	8.3(1.6);n=27789	8.25(1.61);n=13824	8.26(1.58);n=13965	0.01
Fasting glucose, mmol/L	9.0(3.9);n=30477	9.2(3.6);n=12691	8.8(4.2);n=17786	0.08	9.2(3.8);n=25612	9.2(3.6);n=12691	9.3(4.1);n=12921	0.04

**Table 2. Incidence rate (IR) per 1000 person-year of new onset prostate cancer, cancer-related mortality, and all-cause mortality in the cohort before and after 1:1 propensity score matching.**

SGLT2I: sodium glucose cotransporter-2 inhibitor; DPP4I: dipeptidyl peptidase-4 inhibitor; MDRD: modification of diet in renal disease

Adjusted for significant demographics, past comorbidities, duration of diabetes mellitus, number of prior hospitalizations, number of anti-diabetic drugs, non-SGLT2I/DPP4I medications, abbreviated MDRD, HbA1c, fasting glucose.

<b>Prostate cancer</b>	<b>Number of patients</b>	<b>Number of events</b>	<b>Total person-year</b>	<b>Follow-up duration, years [95% CI]</b>	<b>Incidence [95% CI]</b>	<b>Adjusted hazard ratio [95% CI]</b>	<b>P-value</b>
<b>DPP4I</b>	17120	102	92074.6	5.6 [5.31-5.83]	1.11[0.90-1.34]	1 [reference]	NA
<b>SGLT2I</b>	17120	60	94794.8	5.62 [5.35-5.83]	0.63[0.48-0.81]	0.45[0.30-0.70]	0.0003
<b>Cancer-related mortality</b>	<b>Number of patients</b>	<b>Number of events</b>	<b>Total person-year</b>	<b>Follow-up duration, years [95% CI]</b>	<b>Incidence [95% CI]</b>	<b>Adjusted hazard ratio [95% CI]</b>	<b>P value</b>
<b>DPP4I</b>	17120	260	92299.7	5.6 [5.31-5.83]	2.81[2.48-3.18]	1 [reference]	NA
<b>SGLT2I</b>	17120	99	94892.2	5.62 [5.33-5.82]	1.04[0.85-1.27]	0.57[0.40-0.76]	<0.0001
<b>All-cause mortality</b>	<b>Number of patients</b>	<b>Number of events</b>	<b>Total person-year</b>	<b>Follow-up duration, years [95% CI]</b>	<b>Incidence [95% CI]</b>	<b>Adjusted hazard ratio [95% CI]</b>	<b>P value</b>
<b>DPP4I</b>	17120	1652	92299.7	5.6 [5.31-5.83]	17.9[17.0-18.8]	1 [reference]	NA
<b>SGLT2I</b>	17120	541	94892.2	5.62 [5.35-5.82]	5.70[5.23-6.20]	0.68[0.46-0.78]	<0.0001