

1 **Neurohistopathological Findings of the Brain Parenchyma After Long-Term Deep Brain**
2 **Stimulation: Case Series and Systematic Literature Review**

3 **AUTHORS**

4 Juan Vivanco-Suarez^{1*}, MD; Timothy Woodiwiss^{1*}, MD; Kimberly L. Fiock², PhD; Marco M. Hefti²,
5 MD; Nandakumar S. Narayanan³, MD, PhD; Jeremy D. W. Greenlee¹, MD

6 * Both authors contributed equally.

7
8 **AFFILIATIONS**

9 ¹ Department of Neurosurgery, University of Iowa, Iowa City, IA, United States

10 ² Department of Pathology, University of Iowa, Iowa City, IA, United States.

11 ³ Department of Neurology, University of Iowa, Iowa City, IA, United States.

12

13 **CORRESPONDENCE**

14 Jeremy D. W. Greenlee, MD,

15 Department of Neurosurgery, University of Iowa Hospitals and Clinics,

16 200 Hawkins Dr, 1826 JPP, Iowa City, IA 52242, United States.

17 E-mail address: jeremy-greenlee@uiowa.edu, phone: (319) 356-2771

18

19 **SHORT RUNNING TITLE**

20 Neurohistopathological findings after deep brain stimulation

21

22 **KEYWORDS**

23 Parkinson's disease; Neuropathology; Gliosis; Postmortem

24

25 **ELEMENTS COUNTS**

26 Abstract: 302 words

27 Text: 3529 words

28 References: 48

29 Tables: 2

30 Figures: 1

31 Supplemental tables: 5

32 Supplemental figures: 0

33

34 **PREVIOUS PRESENTATION**

35 None

36

37 **ETHICS**

38 None

39

40 **CONFLICTS OF INTEREST**

41 The authors report no disclosures.

42

43 **FUNDING**

44 This research received no specific grant from any funding agency in public, commercial, or not-for-profit
45 sectors.

46 **Neurohistopathological Findings of the Brain Parenchyma After Long-Term Deep Brain**
47 **Stimulation: Case Series and Systematic Literature Review**

48 **ABSTRACT**

49 **Introduction:** The efficacy of deep brain stimulation (DBS) has been established to treat several
50 movement and psychiatric disorders. However, several aspects, such as the mechanism of action and
51 tissue changes after treatment are incompletely described. Hence, we aimed to describe the
52 neurohistopathological findings of 9 patients who underwent DBS for movement disorders. Additionally,
53 we performed a systematic literature review on postmortem studies after DBS implantation.

54 **Methods:** We performed a retrospective study of patients who underwent DBS for movement disorders
55 between 2000-2023 and had postmortem autopsy. Demographics, clinical features, and outcomes were
56 collected. Levodopa equivalent daily dose (LEDD) and total electrical energy delivered (TEED) were
57 calculated. Neurohistopathological assessments were performed from autopsies. A systematic literature
58 review was conducted to summarize the literature.

59 **Results:** Postmortem neurohistopathologic assessment of 9 patients who underwent DBS for movement
60 disorders (8 Parkinson's disease [multiple system atrophy was final diagnosis in 1], and 1 parkinsonism)
61 was performed. Median age at DBS implantation was 65 years (range, 54-69), and most were male (8
62 patients, 89%). Most common DBS target was the subthalamic nucleus (8 patients, 89%). Median DBS
63 duration was 65 months (range, 7-264 months). Post-DBS reduction in LEDD was found in 7/9 patients,
64 and TEED was increased over time in 5/7 patients. No patients died due to DBS. Neurohistopathological
65 assessment showed gliosis in 7 (78%) patients and activated microglial infiltration in 1 (11%).
66 Additionally, postmortem findings (after DBS) of 59 patients (between 1977-2021) were identified in the
67 literature: 26 (44%) for Parkinson's disease, 20 (34%) for pain, and 13 (22%) for other conditions.

68 **Conclusion:** Our findings confirm the presence of a local tissue reaction, including gliosis and activated
69 microglial infiltration around the implanted DBS electrodes. The effect of the local changes on the
70 clinical efficacy of DBS is not established. Further DBS postmortem studies and standardization of tissue
71 processing are needed.

72
73 **ABBREVIATIONS**

74 DBS, deep brain stimulation; LEDD, Levodopa equivalent daily dose; MSA, multiple system atrophy;
75 PD, Parkinson's disease; TEED, total electrical energy delivered.

76

77 INTRODUCTION

78 The efficacy of deep brain stimulation (DBS) has been established for the treatment of several
79 movement and psychiatric disorders.¹ Furthermore, its experimental application for chronic pain, obesity,
80 and other neurocognitive disorders has continually expanded, aiming to benefit a broader group of
81 patients.² However, several aspects of this treatment are not completely defined, including the specific
82 interaction and activation of surrounding structures, the local tissue changes in the brain caused by long-
83 term stimulation, the potential adverse tissue responses induced by the electrode, and the existence of
84 neuronal damage.^{1,3} A deeper understanding of the chronic local glial responses after electrode
85 implantation may provide helpful insights for the improvement of anatomical targets and the optimization
86 of electrode design according to the target tissue.

87 Previously published postmortem studies have begun the characterization of histological changes
88 occurring around electrodes in response to implantation and chronic stimulation. A comprehensive review
89 performed by DiLorenzo et al. reported 40 cases with implanted systems from as early as 1977.⁴ The
90 authors showed that in more than 50% of the cases, there was local fibrosis, astrocytosis, multinucleated
91 giant cells, mononuclear leukocytes, macrophages, activated microglia, and neuronal loss.^{4,5} Of note,
92 persistent efficacy was more commonly observed when tissue injury was absent. More recently, Vedam-
93 Mai et al. found that 3 out of 4 DBS cases exhibited histopathological evidence of a glial collar or scar
94 around the electrode, but there was no significant association between DBS duration and the amount of
95 gliosis. As the technologies and techniques employed for DBS continue to evolve, the evidence regarding
96 the local changes around the electrode is contradictory.⁶⁻⁹ For instance, data on the comparison of
97 histological samples from patients with active and inactive electrodes is limited, the effect of the size of
98 the gliotic scar is uncertain, and evidence of the distance (from the electrode) where neuronal loss or
99 preservation is observed is unclear.¹⁰

100 Hence, this study aims to characterize and describe the neurohistopathological environment of the
101 brain parenchyma surrounding DBS electrodes in 9 patients who underwent surgical treatment for
102 Parkinson's disease (PD) or a parkinsonism syndrome. Additionally, we present an updated and expanded
103 summary of the literature on this topic with a systematic review of postmortem studies after DBS
104 implantation.

105

106 METHODS

107 Study design, patient protocol, tissue acquisition, and storage

108 This was a retrospective study of adult patients who underwent DBS for movement disorders at a
109 tertiary academic center between July 2000 and April 2023. All tissue was obtained from autopsies
110 conducted at the University of Iowa Hospitals and Clinics as part of routine clinical care in accordance

111 with all applicable federal and state laws and regulations. Consent for the use of tissue in research was
112 obtained from the next of kin as part of the autopsy consent. This project was reviewed by the University
113 of Iowa Institutional Review Board and determined not to represent human subjects research under the
114 National Institutes of Health Revised Common Rule. Based on the database created for each donor, for
115 this study, we extracted the age at diagnosis, sex, duration of disease, calculated Levodopa equivalent
116 daily dose (LEDD)¹¹ (before implantation, 6 [± 3] months after DBS, and at last clinical follow-up), age
117 at DBS implantation, intraoperative and hospitalization complications, DBS duration, post-implantation
118 stimulation parameters (at 6 [± 3] months after DBS, at last clinical follow-up), and age at death. To
119 assess the stimulation parameters, we calculated total electrical energy delivered (TEED)¹² (impedance
120 was set to 1000Ω to standardize calculations).

121

122 **Neurohistopathological techniques and evaluation**

123 Tissue processing was done as previously described.¹³⁻¹⁵ Briefly, brains were fixed in 20% neutral
124 buffered formalin for 10-14 days and then sectioned, sampled, processed, and stained (both histochemical
125 and immunohistochemical stains) in the Emory Warner Clinical Pathology Laboratories of the University
126 of Iowa according to standard protocols. A board-certified neuropathologist (MMH) and PhD-trained
127 research neuropathologist (KLF) reviewed all tissue sections and stains.

128

129 **Systematic literature review and data extraction**

130 A comprehensive literature search of the MEDLINE (via PubMed) database using medical subject
131 heading terms, entrees, and free text to identify all published postmortem neurohistopathological reports
132 of DBS cases (end-of-search date: August 9, 2023). The complete search strategy is found in

133 **Supplemental Table 1.** All DBS cases, regardless of indication or anatomical target in the human brain,
134 were included. Review articles or meta-analyses that did not describe disaggregated data on DBS cases
135 were excluded. Two independent reviewers (TW and JV-S) screened the articles using the Rayyan tool
136 (<https://www.rayyan.ai/>). Any difference between reviewers was settled through discussion. After the
137 initial selection of eligible studies, the reference lists were thoroughly searched to identify additional
138 eligible studies based on the “snowball” methodology.¹⁶ Because DiLorenzo et al. thoroughly reviewed
139 the literature in 2014, we expanded our review to new cases either missed by the aforementioned authors
140 or reported after the review was completed. The following data were collected using a standardized data
141 extraction form: demographic and patient characteristics, information about implanted hardware,
142 stimulation parameters, clinical course, and neuropathological findings. Clinical efficacy and decline after
143 DBS were extracted as defined by the authors of each study. When critical or disaggregated information
144 was missing, the studies were excluded.

145
146
147
148
149
150
151
152
153
154
155
156
157
158
159
160
161
162
163
164
165
166
167
168
169
170
171
172
173
174
175
176
177

RESULTS

Patient demographics, clinical, and DBS characteristics

A total of 9 patients who had DBS implantation were identified from our institutional autopsy database. The patient and neurohistopathologic characteristics are described in [Table 1](#). The median age of disease onset was 52 (range, 47-64 years), and 8 (89%) were male. On preoperative clinical evaluation, PD was diagnosed in 8 (89%) patients and parkinsonism in 1 (11%). Of note, patient 9 presented clinically as PD with a very robust response to levodopa for several years. However, dysautonomic symptoms and ataxia emerged throughout the disease course, pointing to the diagnosis of a slowly evolving Parkinsonian variant multiple system atrophy (MSA), which was confirmed on postmortem neurohistopathologic evaluation.

Regarding the DBS characteristics, the median disease course before DBS implantation was 7 years (range, 3-20 years). The median patient age at DBS implantation was 65 years (range, 54-69 years). All patients received bilateral DBS lead implantation; the majority received electrodes targeting the bilateral subthalamic nuclei (8, 89%). One (11%) patient received leads targeting the globus pallidus interna. Patient 3 had an additional lead implanted in the left ventralis intermedialis thalamic nucleus due to refractory right-sided tremor. All electrodes were made of platinum/iridium (Medtronic, Inc.). The median DBS duration was 65 months (range, 7-262 months). Patient 5 underwent unilateral DBS removal (extension and battery) 16 years after bilateral implantation due to a neck infection surrounding the left-sided extension wire. No intracranial infection was identified. He was successfully reimplanted 3 months later after adequate infection management with replacement of the left STN lead and extension and battery replacement. Patient 8 had a right lead incision/burr hole erosion and infection necessitating complete bilateral DBS hardware removal 13 months after implantation. No intracranial infection was identified. At last follow-up, the TEED increased in 5 of 7 patients with available data by a mean of 151 J-s compared to their initial DBS settings. However, in patients 8 and 9, the TEED decreased slightly (1 and 21 J-s, respectively) from their initial parameters. A mean LEDD reduction of 28% was observed in 7 patients after DBS began. On the other hand, LEDD increased in patients 4 and 6 by 67% and >100%, respectively. Additional details about the LEDD and TEED are presented in **Supplemental Table 2**. In terms of mortality, 1 patient (11%, case 9) passed away due to disease progression, 4 (44%) died due to unknown causes, and the remaining 4 (44%) passed away due to reasons unrelated to the primary disease or an unknown cause.

Postmortem neurohistopathological characteristics

178 An example of the gross and microscopic findings is presented in [Figure 1 \(A-E\)](#). [Table 1](#) shows a
179 descriptive summary of the postmortem neurohistopathologic findings. All patients except 2 showed
180 gliosis at the DBS lead site. One of the 2 only had DBS for 7 months due to a fatal fall, while the other
181 showed no gliosis despite DBS for 140 months. Activated microglial infiltration was seen around the lead
182 in 1 patient. For the 7 patients who developed gliosis around the DBS lead, the median DBS duration was
183 65 months (range, 13-262). TEED increased over time in 4 patients (mean of 178 J-s) and decreased in 2
184 (1 and 21 J-s, respectively). A mean LEDD reduction of 32% was observed in 5/7 patients after DBS
185 compared to pre-operative values. Two patients required an increase of their LEDD over time of 67% and
186 >100%, including the lone PD patient treated with globus pallidus interna DBS. Notable
187 neurohistopathologic changes from the tissue sections are the following: substantia nigra depigmentation
188 was found in 2 (22%) patients (cases: 1 and 3) and nigra cell loss in 7 (78%; cases: 1, 4, 5, 6, 7, 8, and 9).
189 Patient 1 had a combination of nigra depigmentation and nigra cell loss. There were a variety of
190 additional neurodegenerative pathologic findings, including the presence of Lewy bodies in 5 patients
191 (56%; cases: 2, 3, 4, 5, and 6) at different anatomical structures, neurofibrillary tangles in 4 (44%; cases:
192 5, 6, 8, and 9), tau aggregates in 4 (44%; cases: 2, 5, 8, and 9), beta-amyloid plaques in 3 (33%; cases: 5,
193 6, and 8), TDP-43 inclusions in 2 (22%; cases: 2 and 5), and inclusions of alpha-synuclein in 1 (11%, case
194 9). Of note, all but one assessed patients with 12 years or longer of PD duration at the time of death
195 showed Lewy bodies. Finally, other pathological findings (distant to the tract) including hemorrhages and
196 subacute infarcts were reported in 3 (33%) patients (cases 6, 7, and 8).

197

198 **Systematic review update: study selection and characteristics**

199 The literature review yielded 1249 articles, from which 18 duplicates were removed. As a result of
200 the initial screening by title and abstract, there were 48 potentially eligible articles. In the full-text
201 evaluation, 16 documents were excluded for the following reasons: ineligible study type ($n=6$),
202 insufficient data available ($n=5$), ineligible outcomes ($n=3$), and ineligible patient population ($n=2$).
203 Ultimately, 32 studies (25 case reports and 7 case series) from the final systematic search were included.

204 From the studies, a total of 59 patients who had a postmortem neurohistopathological assessment
205 after DBS implantation (for different conditions) were identified. The studies were performed between
206 1977 and 2021. Fifteen were conducted in Europe^{6,7,10,17-28}, 13 in North America²⁹⁻⁴¹, 3 in Australia⁴²⁻⁴⁴,
207 and 1 in Asia⁴⁵. The number of patients per study ranged from 1 to 8. In terms of the conditions for which
208 DBS was implanted, 26 (44%) patients were treated for PD between 1994 and 2021 ([Table 2](#); 2 MSA
209 cases were initially misdiagnosed as PD), 6 (10%) for epilepsy (4 cases had cerebellar stimulation)
210 between 1979 and 2020 ([Supplemental material Table 3](#)), 20 (34%) for pain between 1977 and 1991

211 **(Supplemental material Table 4)**, and 7 (12%) for other conditions (tremor, chorea-acanthocytosis, and
212 diffuse Lewy body disease) between 2000 and 2011 **(Supplemental material Table 5)**.

213

214 **Literature PD patients: DBS characteristics**

215 Regarding the 26 PD patients (cases 11¹⁸ and 15³⁰ were confirmed to be MSA on autopsy), the age at
216 DBS implantation ranged from 24 to 81 years, and most were males (21; 81%). The DBS targets were the
217 subthalamic nucleus in 16 (62%) patients (15 bilateral and 1 left side), the ventralis intermedius thalamic
218 nucleus in 8 (31%; 3 bilateral, 3 right, 2 left, and 1 unknown), the left centromedian-parafascicular
219 complex thalamic region in 1 (4%), and the bilateral zona incerta in 1 (4%). Platinum/iridium electrodes
220 were the most employed. DBS duration ranged from 2 days to 144 months. Three cases passed away
221 within 1 month after DBS implantation. Case 9 passed away 2 days after implantation due to myocardial
222 infarction.¹⁰ Case 11 was readmitted 19 days after lead placement surgery due to abnormal behavior,
223 impaired gait, fever, and lethargy. DBS was discontinued, and medical management was started.¹⁸
224 However, after transient improvement, the patient died 2 days later due to a massive pulmonary embolism
225 (identified in autopsy). Case 13 died 4 days after implantation due to cardiorespiratory arrest secondary to
226 pulmonary embolus (identified in autopsy). Clinical efficacy (as reported by the authors of each study)
227 was observed in 24 patients (92%), and decline was reported in 4 (15%). Death causes were diverse.
228 However, none of them were encountered intraoperatively during DBS implantation.

229

230 **Literature PD patients: postmortem neurohistopathological characteristics**

231 In terms of the postmortem neurohistopathological analysis, fibrillary gliosis (which represents a
232 chronic tissue reaction) was reported in 23/24 (92%) patients, and in 2/26 (8%) patients, it could not be
233 assessed due to precipitated death (details discussed above). In the patients who passed away within 1
234 month after implantation, fresh hemorrhage was evidenced in 2/3 (67%). Reactive astrocytosis (mostly
235 reflective of an acute tissue reaction) was observed in 14/25 (56%) patients. Microglial activation was
236 found in 9/17 (53%) patients, and neuronal loss was observed in 7/19 (37%) patients. Multinucleated
237 giant cells were reported in 8/25 (32%) patients. Regarding the pathologic findings of PD, nigra
238 depigmentation was reported in 24/24 (100%) patients, and nigra cell loss in 21 (81%). Of note, in the
239 cases where MSA was confirmed on autopsy (2/26, 8%), DBS showed clinical efficacy only in case 11.

240

241 **DISCUSSION**

242 In this study of the neurohistopathological findings of 9 patients implanted with platinum/iridium
243 DBS electrodes for parkinsonism (1 patient), PD (7 patients), and parkinsonian type MSA (1 patient), we
244 found that at a median time of 65 months after DBS implantation, the brain tissue surrounding the DBS

245 resulted in gliosis in 7 patients (78%) and the presence of activated microglia in 1 patient (11%). In
246 general, these results are consistent with previous postmortem studies showing that a glial response is
247 consistently generated around the DBS electrodes. Additionally, our systematic review spanning between
248 1977 and 2021 of postmortem neuropathological studies reporting findings after DBS identified 59
249 unique patients who underwent treatment for PD, epilepsy, pain, and other conditions such as tremor,
250 chorea-acanthocytosis, and diffuse Lewy body disease. As the number of patients treated with DBS (for a
251 wide variety of conditions) increases and the technologies continue to evolve, our study represents an
252 addition to the body of evidence on the postmortem findings after DBS and represents the most
253 comprehensive and current review of this topic.

254

255 **Gliosis surrounding the implantation site**

256 The presence of a gliotic response surrounding the DBS electrode described in this study is similar to
257 the findings reported in previous postmortem human studies and animal models.² Yet, our rate of 78%
258 (7/9 patients) gliotic response after a range of 7-262 months following DBS implantation is lower than the
259 overall rate of gliotic responses reported in the literature (92%, 22/24 patients). Notably, one of our
260 patients without gliosis had DBS for 7 months. Previous studies have attributed the reaction of the brain
261 parenchyma to the electrode itself and/or the chronic stimulation.³² More study is needed to understand if
262 these factors, such as the biocompatibility of the implanted electrodes, the variability in the stimulation
263 parameters, degradation of the metal contacts, and the length of stimulation (and others), could be
264 implicated in the process of gliotic scar formation. The clinical implication (effect upon efficacy
265 variation) of the gliotic response around the DBS electrode is poorly described. The plausibility that an
266 increased gliotic response negatively affects DBS efficacy seems reasonable and intuitive. However, in
267 our study, from the 7 patients who developed gliotic changes, 5 had a 32% reduction in their LEDD at the
268 last follow-up compared to pre-DBS dosage. This contrasted with the 2 patients who needed a greater
269 than 50% LEDD increase over their post-implantation course. Of note, these patients (4 and 6 from Table
270 1) had the lowest pre-DBS LEDD levels and a prolonged DBS treatment (65 and 94 months,
271 respectively). Also, patient 6 was the only one who received stimulation of the globus pallidus interna,
272 which is known to not reduce LEDD after DBS compared to patients treated with STN DBS. Given the
273 variability in our findings, the limited sample size, and the lack of standardization in the assessment of
274 gliosis around the DBS electrode, additional studies will be needed with objective clinical findings, such
275 as LEDD and TEED, compared to in depth histological evaluation, such as volume and density of gliosis,
276 before robust conclusions can be made. Separating the gliosis produced by the implantation lesion and the
277 stimulation-induced effects is also relevant for optimizing clinical efficacy. Thus, we recommend that
278 future studies evaluate the potential correlation between the gliotic scar and the clinical efficacy of DBS

279 treatment to provide needed insights for developing biocompatible materials, optimizing stimulation
280 parameters, and implantation techniques that optimize patient outcomes.

281

282 **Additional neurohistopathologic findings**

283 Evidence of additional markers of local tissue response (to the implanted electrodes), such as
284 activated microglia, reactive astrocytosis, giant multinuclear cells, hemosiderin-laden macrophages, and
285 neuronal loss, have been reported in previous studies.^{2,4,8} In our series, only one (11%) case (patient 2)
286 demonstrated activated microglia infiltration, which was lower than the 53% we found in the literature
287 review. The presence of activated microglia lacks specificity but supports the presence of an ongoing
288 inflammatory response regardless of the chronicity of the electrode implantation. Furthermore, in the
289 literature review, we found additional tissue responses such as astrogliosis (53%), multinucleated giant
290 cells (32%), and neuronal loss (37%). Although these findings are unspecific and were not assessed in our
291 series, their description, characterization, and role in the therapeutic action of DBS are of great interest.
292 Support for more postmortem neurohistopathologic after DBS is also supported by our findings of change
293 in diagnosis over time in our series and the literature. In our study 1 patient was confirmed to have MSA
294 after DBS implantation for PD, while in the literature, 2 cases^{18,30} had a similar update to MSA after
295 postmortem assessment. The lack of consistent efficacy in these cases confirms the need for an accurate
296 diagnosis to obtain the best clinical results. Clinical research would benefit from pathologically confirmed
297 diagnosis to ensure data is accurate. Additional knowledge about DBS and its mechanisms could allow
298 for the inclusion of other indications in which the therapy could have potential benefits.

299

300 **Future directions**

301 Although the neurohistopathological changes observed in the tissue surrounding the DBS electrodes
302 show characteristics of a classical foreign body reaction, the presence of additional changes (around the
303 active electrodes) and their underlying mechanisms are yet to be elucidated. The response of different
304 cellular lines (neurons, glial cells, immune cells, and vasculature-related cells) to electrical stimulation is
305 not established.¹ Determination of the influence of electrical currents (at varying intensities and charge
306 densities) on neuronal signaling, neural function, astrocyte response, and overall cellular metabolism
307 could provide valuable insights to tailor and optimize the stimulation parameters to favor minimal injury,
308 maximal long-lasting efficacy, and expansion of the contemporary indications for DBS. Additionally, the
309 development and testing of electrodes (and coatings) with novel functional biomaterials aiming to
310 minimize the immune response, decrease tissue resistance to stimulation (impedance), favor the attraction
311 of the neuronal processes (potentially enhancing the benefits of DBS), and optimize the charge transfer
312 density. Such efforts are underway employing nanomaterials and nanoparticles that minimize the tissue

313 reaction, favor neural recordings, and improve charge transfer efficiency.⁴⁶ Despite this, the use of
314 postmortem neurohistopathological data continues to provide valuable and fundamental insights to guide
315 future directions. However, the postmortem literature is largely dominated by studies with low-level
316 evidence (case reports and case series), lacking standard tissue handling and assessment protocols. The
317 formation of an integrated network of researchers, the adoption of common protocols for the collection
318 and management of specimens, and the implementation of new techniques for tissue evaluation seem to
319 be the natural next step in the evolution of the study of human neurodegenerative and neuropsychiatric
320 disease and the role of DBS with them.^{47,48}

321

322 **Limitations**

323 We acknowledge that our study has limitations. First, the sample size was small, and the analysis
324 was retrospective. Next, the clinical outcome data were limited by availability and patient follow-up
325 Additionally, the handling, processing, and evaluation of the neurohistopathological samples were
326 performed according to local protocols, which limits the comparison and generalizability of our findings.
327 Regarding the systematic review, the included studies were small (case reports and series) and
328 retrospective. The clinical data and postmortem neurohistopathological findings were heterogeneously
329 reported based on the individual selection and preference of the authors from each study. However,
330 considering the limited availability of such data and the lack of standardization on the protocols for
331 neurohistopathological tissue handling, we included all the available reports aiming to comprehensively
332 summarize the existing literature.

333

334 **CONCLUSION**

335 Our findings confirm the presence of a local tissue reaction, including gliosis and activated
336 microglial infiltration around the implanted DBS electrodes. The presence of additional histologic
337 changes has been reported in the literature however, the implication of these findings needs to be clearly
338 established. The effect of the local changes on the clinical efficacy of DBS is not clearly established. As
339 the continual effort to expand the use, efficacy, and safety of DBS for neuromodulation and
340 neuroaugmentation moves forward, the value of postmortem neurohistopathological evidence will
341 undoubtedly shed more light on the mechanism behind this powerful clinical and surgical tool. Further
342 DBS postmortem studies and standardization of tissue processing are needed to expand the understanding
343 of the interaction between the local brain parenchyma and the implanted DBS electrode.

344

345 **ACKNOWLEDGMENTS**

346 The authors would like to acknowledge the incredible contribution of the patient donors and their
347 families, as this research would not be possible without their generous gift to the advancement of science.
348 They would also like to acknowledge the support staff at the University of Iowa who worked tirelessly
349 behind the scenes to keep our facilities running. If there are additional comments/suggestions, please let
350 us know.
351

352 **REFERENCES**

- 353 1. Evers J, Lowery M. The Active Electrode in the Living Brain: The Response of the Brain
354 Parenchyma to Chronically Implanted Deep Brain Stimulation Electrodes. *Oper Neurosurg*
355 (*Hagerstown*). Jan 13 2021;20(2):131-140. doi:10.1093/ons/opaa326
- 356 2. Orłowski D, Michalis A, Glud AN, et al. Brain Tissue Reaction to Deep Brain Stimulation-A
357 Longitudinal Study of DBS in the Goettingen Minipig. *Neuromodulation*. Jul 2017;20(5):417-423.
358 doi:10.1111/ner.12576
- 359 3. Fenoy AJ, Goetz L, Chabardès S, Xia Y. Deep brain stimulation: are astrocytes a key driver
360 behind the scene? *CNS Neurosci Ther*. Mar 2014;20(3):191-201. doi:10.1111/cns.12223
- 361 4. DiLorenzo DJ, Jankovic J, Simpson RK, Takei H, Powell SZ. Neurohistopathological findings at
362 the electrode-tissue interface in long-term deep brain stimulation: systematic literature review, case
363 report, and assessment of stimulation threshold safety. *Neuromodulation*. Jul 2014;17(5):405-18;
364 discussion 418. doi:10.1111/ner.12192
- 365 5. Moss J, Ryder T, Aziz TZ, Graeber MB, Bain PG. Electron microscopy of tissue adherent to
366 explanted electrodes in dystonia and Parkinson's disease. *Brain*. Dec 2004;127(Pt 12):2755-63.
367 doi:10.1093/brain/awh292
- 368 6. Al-Helli O, Thomas DL, Massey L, et al. Deep brain stimulation of the subthalamic nucleus:
369 histological verification and 9.4-T MRI correlation. *Acta Neurochir (Wien)*. Dec 2015;157(12):2143-7.
370 doi:10.1007/s00701-015-2599-x
- 371 7. De Vloo P, Thal D, van Kuyck K, Nuttin B. Histopathology after microelectrode recording and
372 twelve years of deep brain stimulation. *Brain Stimul*. Sep-Oct 2018;11(5):1183-1186.
373 doi:10.1016/j.brs.2018.05.005
- 374 8. Vedam-Mai V, Rodgers C, Gureck A, et al. Deep Brain Stimulation associated gliosis: A post-
375 mortem study. *Parkinsonism Relat Disord*. Sep 2018;54:51-55. doi:10.1016/j.parkreldis.2018.04.009
- 376 9. Vedam-Mai V, Martinez-Ramirez D, Hilliard JD, et al. Post-mortem Findings in Huntington's
377 Deep Brain Stimulation: A Moving Target Due to Atrophy. *Tremor Other Hyperkinet Mov (N Y)*.
378 2016;6:372. doi:10.7916/d8zp462h
- 379 10. Haberler C, Alesch F, Mazal PR, et al. No tissue damage by chronic deep brain stimulation in
380 Parkinson's disease. *Ann Neurol*. Sep 2000;48(3):372-6.
- 381 11. Tomlinson CL, Stowe R, Patel S, Rick C, Gray R, Clarke CE. Systematic review of levodopa
382 dose equivalency reporting in Parkinson's disease. *Mov Disord*. Nov 15 2010;25(15):2649-53.
383 doi:10.1002/mds.23429

- 384 12. Koss AM, Alterman RL, Tagliati M, Shils JL. Calculating total electrical energy delivered by
385 deep brain stimulation systems. *Ann Neurol*. Jul 2005;58(1):168; author reply 168-9.
386 doi:10.1002/ana.20525
- 387 13. Fiock KL, Hook J, Hefti MM. Determinants of Astrocytic Pathology in Stem Cell Models of
388 Primary Tauopathies. *bioRxiv*. Jul 26 2023;doi:10.1101/2023.07.18.549558
- 389 14. Fiock KL, Smalley ME, Crary JF, Pasca AM, Hefti MM. Increased Tau Expression Correlates
390 with Neuronal Maturation in the Developing Human Cerebral Cortex. *eNeuro*. May/Jun
391 2020;7(3)doi:10.1523/eneuro.0058-20.2020
- 392 15. Conway KS, Ghafoor F, Gottschalk AC, et al. The Neuropathology of 1p36 Deletion Syndrome:
393 An Autopsy Case Series. *J Neuropathol Exp Neurol*. Sep 27 2021;80(9):856-860.
394 doi:10.1093/jnen/nlab072
- 395 16. Wohlin C. Guidelines for snowballing in systematic literature studies and a replication in
396 software engineering. presented at: Proceedings of the 18th International Conference on Evaluation and
397 Assessment in Software Engineering; 2014; London, England, United Kingdom.
398 <https://doi.org/10.1145/2601248.2601268>
- 399 17. Caparros-Lefebvre D, Ruchoux MM, Blond S, Petit H, Percheron G. Long-term thalamic
400 stimulation in Parkinson's disease: postmortem anatomoclinical study. *Neurology*. Oct 1994;44(10):1856-
401 60. doi:10.1212/wnl.44.10.1856
- 402 18. Berciano J, Valdeoriola F, Ferrer I, et al. Presynaptic parkinsonism in multiple system atrophy
403 mimicking Parkinson's disease: a clinicopathological case study. *Mov Disord*. Jul 2002;17(4):812-6.
404 doi:10.1002/mds.10190
- 405 19. Jarraya B, Bonnet AM, Duyckaerts C, et al. Parkinson's disease, subthalamic stimulation, and
406 selection of candidates: a pathological study. *Mov Disord*. Dec 2003;18(12):1517-20.
407 doi:10.1002/mds.10607
- 408 20. Nielsen MS, Bjarkam CR, Sørensen JC, Bojsen-Møller M, Sunde NA, Østergaard K. Chronic
409 subthalamic high-frequency deep brain stimulation in Parkinson's disease--a histopathological study. *Eur*
410 *J Neurol*. Feb 2007;14(2):132-8. doi:10.1111/j.1468-1331.2006.01569.x
- 411 21. Guehl D, Vital A, Cuny E, et al. POSTMORTEM PROOF OF EFFECTIVENESS OF ZONA
412 INCERTA STIMULATION IN PARKINSON DISEASE. *Neurology*. 2008;70(16 Part 2):1489-1490.
413 doi:10.1212/01.wnl.0000310426.18409.11
- 414 22. Gelpi E, Haberler C, Micko A, et al. Focal Subthalamic Atrophy after Long-Term Deep Brain
415 Stimulation in Parkinson's Disease. *Mov Disord*. Aug 2021;36(8):1987-1989. doi:10.1002/mds.28653

- 416 23. Wright GD, Weller RO. Biopsy and post-mortem findings in a patient receiving cerebellar
417 stimulation for epilepsy. *J Neurol Neurosurg Psychiatry*. Mar 1983;46(3):266-73.
418 doi:10.1136/jnnp.46.3.266
- 419 24. Giordano F, Caporalini C, Peraio S, et al. Post-mortem histopathology of a pediatric brain after
420 bilateral DBS of GPI for status dystonicus: case report and review of the literature. *Childs Nerv Syst*. Sep
421 2020;36(9):1845-1851. doi:10.1007/s00381-020-04761-w
- 422 25. Gybels J, Dom R, Cosyns P. Electrical stimulation of the central gray for pain relief in human:
423 autopsy data. *Acta Neurochir Suppl (Wien)*. 1980;30:259-68. doi:10.1007/978-3-7091-8592-6_31
- 424 26. Boivie J, Meyerson BA. A correlative anatomical and clinical study of pain suppression by deep
425 brain stimulation. *Pain*. Jun 1982;13(2):113-126. doi:10.1016/0304-3959(82)90022-7
- 426 27. Burbaud P, Vital A, Rougier A, et al. Minimal tissue damage after stimulation of the motor
427 thalamus in a case of chorea-acanthocytosis. *Neurology*. Dec 24 2002;59(12):1982-4.
428 doi:10.1212/01.wnl.0000038389.30437.1e
- 429 28. Valldeoriola F, Tolosa E, Alegret M, et al. Cognitive changes in Parkinson's disease during
430 subthalamic stimulation: a clinicopathologic study. *J Neurol Neurosurg Psychiatry*. Apr 2006;77(4):565-
431 6. doi:10.1136/jnnp.2005.077990
- 432 29. Counelis GJ, Simuni T, Forman MS, Jaggi JL, Trojanowski JQ, Baltuch GH. Bilateral
433 subthalamic nucleus deep brain stimulation for advanced PD: correlation of intraoperative MER and
434 postoperative MRI with neuropathological findings. *Mov Disord*. Sep 2003;18(9):1062-5.
435 doi:10.1002/mds.10489
- 436 30. Chou KL, Forman MS, Trojanowski JQ, Hurtig HI, Baltuch GH. Subthalamic nucleus deep brain
437 stimulation in a patient with levodopa-responsive multiple system atrophy. Case report. *J Neurosurg*. Mar
438 2004;100(3):553-6. doi:10.3171/jns.2004.100.3.0553
- 439 31. Sun DA, Yu H, Spooner J, et al. Postmortem analysis following 71 months of deep brain
440 stimulation of the subthalamic nucleus for Parkinson disease. *J Neurosurg*. Aug 2008;109(2):325-9.
441 doi:10.3171/jns/2008/109/8/0325
- 442 32. Vedam-Mai V, Yachnis A, Ullman M, Javedan SP, Okun MS. Postmortem observation of
443 collagenous lead tip region fibrosis as a rare complication of DBS. *Mov Disord*. Apr 2012;27(4):565-9.
444 doi:10.1002/mds.24916
- 445 33. Pilitsis JG, Chu Y, Kordower J, Bergen DC, Cochran EJ, Bakay RA. Postmortem study of deep
446 brain stimulation of the anterior thalamus: case report. *Neurosurgery*. Feb 2008;62(2):E530-2; discussion
447 E532. doi:10.1227/01.neu.0000316024.81786.78

- 448 34. Robertson LT, Dow RS, Cooper IS, Levy LF. Morphological changes associated with chronic
449 cerebellar stimulation in the human. *J Neurosurg*. Oct 1979;51(4):510-20.
450 doi:10.3171/jns.1979.51.4.0510
- 451 35. Hosobuchi Y, Adams JE, Linchitz R. Pain relief by electrical stimulation of the central gray
452 matter in humans and its reversal by naloxone. *Science*. Jul 8 1977;197(4299):183-6.
453 doi:10.1126/science.301658
- 454 36. Baskin DS, Mehler WR, Hosobuchi Y, Richardson DE, Adams JE, Flitter MA. Autopsy analysis
455 of the safety, efficacy and cartography of electrical stimulation of the central gray in humans. *Brain Res*.
456 Apr 23 1986;371(2):231-6. doi:10.1016/0006-8993(86)90358-6
- 457 37. Boockvar JA, Telfeian A, Baltuch GH, et al. Long-term deep brain stimulation in a patient with
458 essential tremor: clinical response and postmortem correlation with stimulator termination sites in ventral
459 thalamus. Case report. *J Neurosurg*. Jul 2000;93(1):140-4. doi:10.3171/jns.2000.93.1.0140
- 460 38. Gross RE, Jones EG, Dostrovsky JO, Bergeron C, Lang AE, Lozano AM. Histological analysis of
461 the location of effective thalamic stimulation for tremor. Case report. *J Neurosurg*. Mar 2004;100(3):547-
462 52. doi:10.3171/jns.2004.100.3.0547
- 463 39. McClelland S, 3rd, Vonsattel JP, Garcia RE, et al. Relationship of clinical efficacy to
464 postmortem-determined anatomic subthalamic stimulation in Parkinson syndrome. *Clin Neuropathol*.
465 Nov-Dec 2007;26(6):267-75. doi:10.5414/npp26267
- 466 40. DiLorenzo DJ, Jankovic J, Simpson RK, Takei H, Powell SZ. Long-term deep brain stimulation
467 for essential tremor: 12-year clinicopathologic follow-up. *Mov Disord*. Jan 30 2010;25(2):232-8.
468 doi:10.1002/mds.22935
- 469 41. Hughes PS, Krcek JP, Hobson DE, Del Bigio MR. An unusual inflammatory response to
470 implanted deep brain electrodes. *Can J Neurol Sci*. Jan 2011;38(1):168-70.
- 471 42. Henderson JM, O'Sullivan DJ, Pell M, et al. Lesion of thalamic centromedian–parafascicular
472 complex after chronic deep brain stimulation. *Neurology*. 2001;56(11):1576-1579.
473 doi:10.1212/wnl.56.11.1576
- 474 43. Henderson JM, Pell M, O'Sullivan DJ, et al. Postmortem analysis of bilateral subthalamic
475 electrode implants in Parkinson's disease. *Mov Disord*. Jan 2002;17(1):133-7. doi:10.1002/mds.1261
- 476 44. Henderson J, Rodriguez M, O'Sullivan D, et al. Partial lesion of thalamic ventral intermediate
477 nucleus after chronic high-frequency stimulation. *Mov Disord*. Jun 2004;19(6):709-11.
478 doi:10.1002/mds.10709
- 479 45. Kuroda R, Nakatani J, Yamada Y, Yorimae A, Kitano M. Location of a DBS-electrode in lateral
480 thalamus for deafferentation pain. An autopsy case report. *Acta Neurochir Suppl (Wien)*. 1991;52:140-2.
481 doi:10.1007/978-3-7091-9160-6_38

- 482 46. Angelov SD, Koenen S, Jakobi J, et al. Electrophoretic deposition of ligand-free platinum
483 nanoparticles on neural electrodes affects their impedance in vitro and in vivo with no negative effect on
484 reactive gliosis. *J Nanobiotechnology*. Jan 12 2016;14:3. doi:10.1186/s12951-015-0154-9
- 485 47. Vedam-Mai V. Biovalue in Human Brain Banking: Applications and Challenges for Research in
486 Neurodegenerative Diseases. *Methods Mol Biol*. 2022;2389:209-220. doi:10.1007/978-1-0716-1783-0_17
- 487 48. Vedam-Mai V, Krock N, Ullman M, et al. The national DBS brain tissue network pilot study:
488 need for more tissue and more standardization. *Cell Tissue Bank*. Aug 2011;12(3):219-31.
489 doi:10.1007/s10561-010-9189-1

490

491 **TABLES**

492 **Table 1.** Demographic, clinical, and neurohistopathological (around the electrode track) characteristics of the patients who underwent DBS
493 implantation

DBS case n.	Age at onset/ sex	Disease	Age at DBS	DBS target	PD duration at death (years)	DBS duration in months ^a	LEDD change ^b	TEED change ^c	Cause of death	Gliosis at DBS site	Activated microglia at DBS lead	Nigra depigmentation	Nigra cell loss	Other neurodegenerative pathology	Other pathology
1	61-65/M	Parkinsonism	66-70	B STN	5	24	- 13% (- 200 mg)	+ 2,600% (+ 156 J-s)	Lung cancer	Yes	No	Yes	Yes	None	None
2	46-50/M	PD	66-70	B STN	32	140	- 10% (-100 mg)	NA	Unknown	No	No	No	No	<ul style="list-style-type: none"> • Tau limited to the amygdala • Lewy bodies in the limbic system and cingulate gyrus • Scant TDP-43 inclusions in the hippocampus 	None
3	51-55/M	PD	56-60	B STN L VIM	15	126 ^d	- 32% (- 350 mg)	+ 233% (+ 221 J-s)	Unknown	Yes	Yes	Yes	No	<ul style="list-style-type: none"> • Scant Lewy bodies in the cortex and cingulate • Pigment incontinence in the substantia nigra and locus coeruleus 	None
4	51-55/M	PD	61-65	B STN	18	65	+ 67% (+ 470 mg)	NA	COPD	Yes	No	No	Yes	<ul style="list-style-type: none"> • Scattered Lewy bodies in the neocortex and amygdala 	None
5	46-50/M	PD	51-55	B STN	28	262 ^e	- 46% (- 425 mg)	+ 133% (+ 187 J-s)	Unknown	Yes	No	No	Yes	<ul style="list-style-type: none"> • Lewy bodies in the amygdala and cingulate gyrus • Beta-amyloid plaques in the neocortex (Thal 1) • Neurofibrillary tangles extending into the hippocampus (Braak III/IV) • Scattered subpial astrocytic tau in the neocortex • TDP-43 inclusions in the hippocampus • Scattered Lewy bodies in the amygdala and cingulate gyrus 	None
6	56-60/M	PD	61-65	B GPI	12	94	+ 213% (+ 1,785 mg)	+ 89% (+ 147 J-s)	Unknown	Yes	No	No	Yes	<ul style="list-style-type: none"> • Beta-amyloid plaques extending into the basal ganglia (Thal 3, CERAD 1) • Neurofibrillary tangles extending into the primary visual cortex (Braak V/VI) 	<ul style="list-style-type: none"> • Remote hemorrhage the internal capsule
7	56-60/F	PD	66-70	B STN	12	7	- 23 % (- 410 mg)	+ 219% (+ 46 J-s)	Head trauma	No	No	No	Yes	Not assessed	<ul style="list-style-type: none"> • Intraparenchymal hemorrhages in the basal ganglia, thalamus, corpus callosum, pons, and midbrain
8	56-60/M	PD	61-65	B STN	14	13 ^f	- 13% (- 200 mg)	- 2% (- 1 J-s)	Cardiac disease	Yes	No	No	Yes	<ul style="list-style-type: none"> • Diffuse beta-amyloid plaques in the middle frontal gyrus • Rare neurofibrillary tangles in the hippocampus 	<ul style="list-style-type: none"> • Multifocal subacute infarcts in the middle frontal gyrus and cerebellum with foamy macrophages and gliosis
9	51-55/M	Initial: PD Definitive: MSA – Parkinsonian type	51-55	B STN	8	62	- 56% (-1,086 mg)	- 31% (- 21 J-s)	Disease progression	Yes	No	No	Yes	<ul style="list-style-type: none"> • Focal Purkinje cell loss and Bergmann gliosis in the cerebellum • Glial cytoplasmic inclusions of alpha synuclein with rare neuronal inclusions in the middle frontal gyrus, cingulate gyrus, corpus callosum, hippocampus, amygdala, pons, substantia nigra, cerebellar white matter, dentate nucleus, and basal ganglia • Rare neurofibrillary tangles in the hippocampus • Scattered tau positive aggregates in the white matter, neocortex, amygdala, substantia nigra, pons, and cerebellum 	None

494 ^a DBS duration was calculated from the first activation until removal or death. ^b LEDD change from last follow-up versus pre-DBS. ^c TEED change from last follow-up versus 6 (±
495 3) months. ^d An additional lead (VIM) was implanted due to refractory right-sided tremor after the initial bilateral STN stimulation. ^e 198 months after implantation, the patient
496 underwent left battery and extension removal due to neck infection. Left STN lead replacement, extension, and battery re-implantation was performed 3 months later. The total
497 time accounts only for the time when DBS stimulation was active. ^f Entire DBS system removed due to right burr hole erosion and infection.

498
499 Abbreviations: B, bilateral; COPD, chronic obstructive pulmonary disease; DBS, deep brain stimulation; F, female; GPI, globus pallidus interna; LEDD, Levodopa equivalent
500 daily dose; M, male; MSA, multiple system atrophy; n., number; NA, not available, STN, subthalamic nucleus; TEED, total electrical energy delivered; VIM, ventral intermediate
501 nucleus.

Table 2. Characteristics of the postmortem neurohistopathological findings around the DBS electrode track for Parkinson's disease

Author, year	DBS case n.	Age at DBS	Sex	DBS targets	Electrode surface material	Clinical efficacy after DBS	Clinical decline after DBS	DBS duration in months	Cause of death	Gliosis at DBS site	Activated microglia at DBS lead	Neuronal loss at DBS site	Other findings at DBS site	Nigra depigmentation	Nigra cell loss
Caparros-Lefebvre et al., 1994 ¹⁷	1	56-60	M	Vim	Pt/Ir	Yes	No	43	Stroke	Yes (1 mm perimeter)	NR	NR	Accumulation of lymphoid cells, macrophages, and giant cells (2 mm) around the electrode	Yes	Yes
Haberler et al., 2000 ¹⁰	2	NR	NR	L Vim	Pt/Ir	Yes	No	70	Myocardial infarction	Yes	No	No	-	Yes	Yes
“	3	71-75	M	BL Vim	Pt/Ir	Yes	No	54	Cardiovascular failure	Yes	No	No	Mononuclear leukocytes	Yes	Yes
“	4	51-55	M	L Vim	Pt/Ir	Yes	No	45	Cardiovascular failure	Yes	No	No	Macrophages and reactive astrocytes	Yes	Yes
“	5	56-60	M	BL Vim	Pt/Ir	Yes	No	45	Cardiovascular failure	Yes	NR	No	Multinucleated giant cells and reactive astrocytes	Yes	Yes
“	6	41-45	M	R Vim	Pt/Ir	Yes	No	1	Astrocytoma	Yes	NR	No	Multinucleated giant cells	Yes	Yes
“	7	76-80	M	BL Vim	Pt/Ir	Yes	No	15	Cardiovascular failure	Yes	Yes	No	More pronounced gliosis around lead track, multinucleated giant cells, and reactive astrocytes	Yes	Yes
“	8	66-70	F	BL STN	Pt/Ir	Yes	No	3	Drowning	Yes	Yes	No	More pronounced gliosis around lead track, multinucleated giant cells, and reactive astrocytes	Yes	Yes
“	9	61-65	M	L STN	Pt/Ir	Yes	No	2 days	Myocardial infarction	-	No	No	Fresh hemorrhage, perifocal edema, and numerous axonal spheroids	Yes	Yes
Henderson et al., 2001 ⁴²	10	66-70	M	L CM-Pf	Pt/Ir	Yes	Yes	48	Sepsis	Yes	NR	Yes	Extensive astrocytosis and small thalamotomy greater than the dimension of the electrode tip penetration	Yes	Yes
Berciano et al., 2002 ¹⁸	11*	61-65	M	BL STN	NR	Yes	No	21 days	Pulmonary embolus	NR	NR	NR	NR	Yes	Yes
Henderson et al., 2002 ⁴³	12	51-55	M	BL STN	Pt/Ir	Yes	No	2	Aspiration pneumonia	Yes	Yes	Yes (mild)	TUNEL staining and analysis of cellular morphology did not show features of apoptosis, and astrocytosis	Yes	Yes
Counelis et al., 2003 ²⁹	13	61-65	M	BL STN	Pt/Ir	Yes	-	4 days	Pulmonary embolus	No	No	No	Fresh hemorrhage along tracks and minimal reactive changes	NR	Yes
Jarraya et al., 2003 ¹⁹	14	21-25	F	BL STN	NR	Yes	Yes	24	Pulmonary embolus	Yes	NR	NR	Large number of activated macrophages around the cavity and in the vicinity, and astrocytosis	Yes	Yes
Chou et al., 2004 ³⁰	15*	51-55	M	BL STN	NR	No	Yes	3	Aspiration pneumonia	Yes	NR	NR	Tracks associated with hemosiderin deposition, multinucleated giant cells, and neovascularization	Yes	Yes
Henderson et al., 2004 ⁴⁴	16	61-65	M	L Vim	Pt/Ir	Yes	Yes	84	Ischemic heart disease	Yes	No	Yes	Hemosiderin deposition along the electrode track and astrocytosis	Yes	Yes
Nielsen et al., 2007 ²⁰	17	71-75	M	BL STN	Pt/Ir	Yes	No	29	Accident	Yes (capsule)	NR	No	Lymphocytes, macrophages, neutrophilic granulocytes, occasional neurons in the capsule, and astrocytosis	Yes	Yes
Guehl et al., 2008 ²¹	18	51-55	M	BL ZI	Pt/Ir	Yes	No	72	Dystonia (rhabdomyolysis)	Yes	NR	NR	None of the electrode contacts were located within the STN	NR	NR

Sun et al., 2008 ³¹	19	81-85	M	BL STN	Pt/Ir	Yes	No	71	Pneumonia	Yes	Yes	NR	Capsule with hemosiderin-laden macrophages, scattered lymphocytes, Rosenthal fibers, focal foreign-body giant cell reaction, and astrocytosis	Yes	Yes
Vedam-Mai et al., 2012 ³²	20	71-75	M	BL STN	NR	Yes	No	13	Cardiac arrest	Yes	No	No	Marked fibrosis around the cavity (right DBS lead tip), fibrocollagenous “capsule” confirmed by Mason’s trichrome	Yes	Yes
Al-Helli et al., 2015 ⁶	21	66-70	M	BL STN	NR	NR	NR	72	NR	Yes	Yes	NR	Small collagenous scar with gliosis (Perl’s stain positive) around track	Yes	Yes
De Vloo et al., 2018 ⁷	22	66-70	F	BL STN	Pt/Ir	Yes	No	144	Pneumonia	Yes	No	No	Minimal reactive astrocytosis, macrophages, fibrillary gliosis, and perivascular lymphocytic infiltration	Yes	Yes
Gelpi et al., 2021 ²²	23	61-65	M	BL STN	NR	Yes	No	51	Peritonitis	Yes	Yes	Yes	Astroglia	Yes	NR
“	24	66-70	F	BL STN	NR	Yes	No	52	Pneumonia	Yes	Yes	Yes	Rosenthal fibers and astroglia	Yes	NR
“	25	46-50	M	BL STN	NR	Yes	No	36	Pneumonia	Yes	Yes	Yes	Multinucleated giant cells, Rosenthal fibers, and astroglia	Yes	NR
“	26	51-55	M	BL STN	NR	Yes	No	48	Cardiac arrest	Yes	Yes	Yes	Rosenthal fibers and astroglia	Yes	NR

503 * DBS indicated for PD, but postmortem examination established diagnosis of multiple system atrophy
 504 Abbreviations: BL, bilateral; CM-Pf, centromedian-parafascicular complex thalamic region; DBS, deep brain stimulation; F, female; L, left; M, male; n., number;
 505 NR, not reported; Pt/Ir, platinum/iridium; R, right; STN, subthalamic nucleus; TUNEL, (TdT)-mediated UTP nick and labelling; Vim, ventralis intermedius
 506 thalamic nucleus; ZI, zona incerta.
 507

FIGURES AND FIGURE LEGENDS

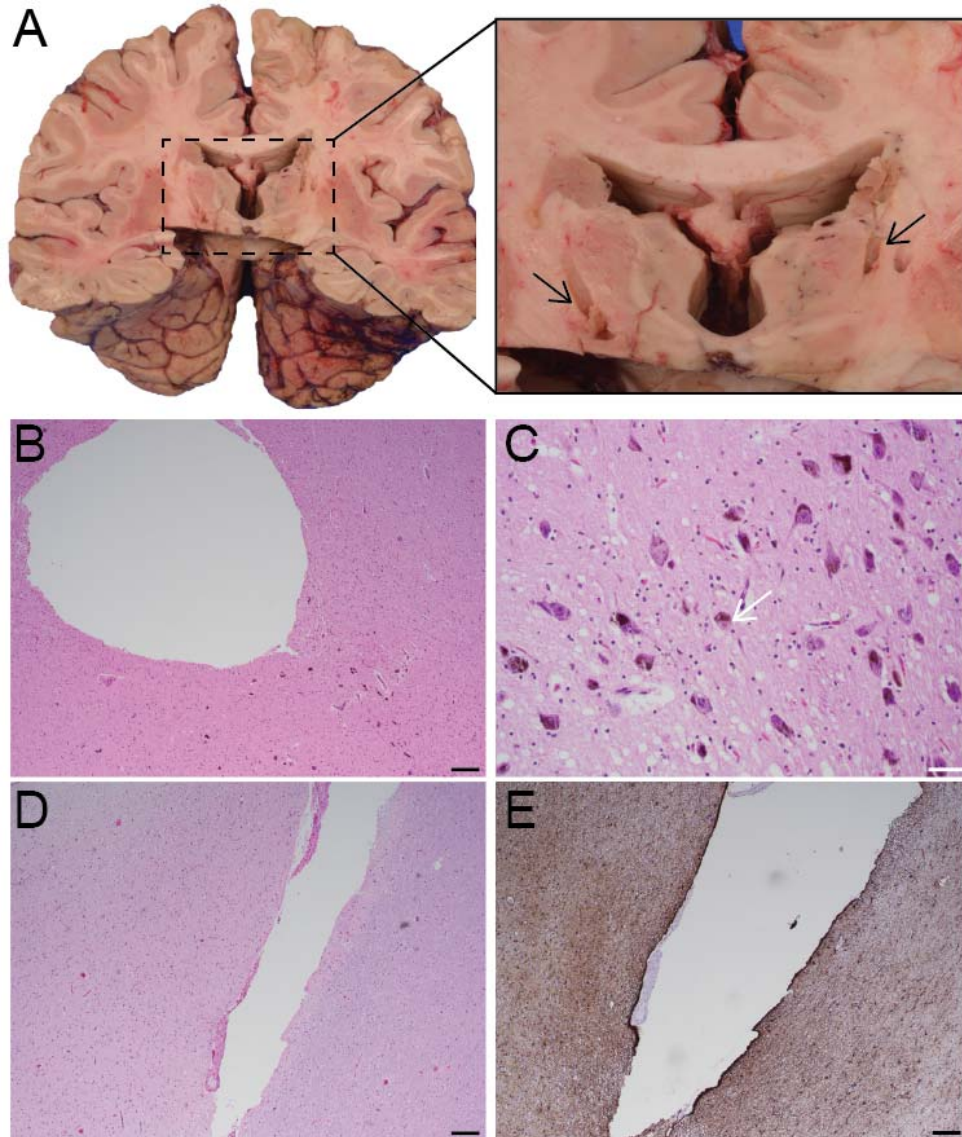


Figure 1 (A-E). Macroscopic and microscopic tissue representations. (A) Coronal brain slice depicting gross bilateral tracts with close-up pop-out. Arrows denote tracts. (B) Hematoxylin & Eosin stain slide of midbrain with electrode tract in the nigra. Black scale = 200 μ m. (C) Lewy bodies in the nigra, arrow denotes Lewy body. White scale = 50 μ m. (D) Luxol fast blue stain on thalamus with electrode tract. Black scale = 200 μ m. (E) Glial fibrillary acidic protein stain on thalamus with tract. Black scale = 200 μ m.