

**Cardiomyopathy in patients with acute ischemic stroke and methamphetamine use:  
Relevance for cardioembolic stroke and outcome**

Sook Joung Lee,<sup>1,2</sup> Shimeng Liu,<sup>1,3</sup> Haley Blackwill,<sup>1</sup> Dana Stradling,<sup>1</sup> Mohammad Shafie,<sup>1</sup>  
Wengui Yu<sup>1\*</sup>

<sup>1</sup>Department of Neurology, University of California, Irvine, CA, USA; <sup>2</sup>Department of Physical Medicine and Rehabilitation, College of Medicine, The Catholic University of Korea, Seoul, Republic of Korea; <sup>3</sup>Department Neurology, Tiantan Hospital, Capital Medical University, Beijing, China

**\*Correspondence Address:**

Wengui Yu, MD, PhD

Department of Neurology, University of California Irvine

200 S. Manchester Ave. Suite 206

Orange, CA, 92868

[wyu@hs.uci.edu](mailto:wyu@hs.uci.edu)

**Title word count:** 16

**Abstract word count:** 259

**Manuscript word count:** 3268

**Number of figures:** 1

**Number of tables:** 3

## ABSTRACT

Methamphetamine use has emerged as a major risk factor of cardiovascular and cerebrovascular disease in young adults. The aim of this study was to investigate the relevance of methamphetamine use and cardiomyopathy in patients with acute ischemic stroke.

We performed a retrospective study of consecutive patients with acute ischemic stroke admitted at our medical center between 2019 and 2022. All patients were screened for methamphetamine use and cardiomyopathy defined as left ventricular ejection fraction  $\leq 45\%$ . Methamphetamine use was identified by self-reported history of use and/or positive urine drug screen. Logistic regression model was performed to analyze the relevance of methamphetamine-associated cardiomyopathy and cardioembolic stroke.

Among 973 consecutive patients screened for the study, 48 (4.9%) were identified to have methamphetamine use. Compared with Non-meth group (n=892), the patients in the Meth group were significantly younger ( $53.2 \pm 10.0$  vs.  $69.7 \pm 15.2$ ,  $p < 0.001$ ), more likely male (76.6% vs. 50.0%,  $p < 0.001$ ), and associated with significantly higher rate of cardiomyopathy (30.4% vs. 14.0%,  $p < 0.01$ ). They were also less likely to have history of atrial fibrillation (8.7% vs. 33.4%,  $p < 0.01$ ) or hyperlipidemia (28.3% vs. 51.7%,  $p < 0.01$ ). Compared with patients with cardiomyopathy without methamphetamine use, those with methamphetamine use and cardiomyopathy had better functional outcome at 3 months, likely due to younger age and fewer comorbidities. In the logistic regression model, methamphetamine-associated cardiomyopathy was found to be a significant risk factor of cardioembolic stroke (OR 2.88, 95% CI 1.81-4.58,  $p < 0.0001$ ).

Our results demonstrate that methamphetamine use increases the risk of cardiomyopathy and cardioembolic stroke in young adults.

## INTRODUCTION

Methamphetamine is a synthetic psychostimulant that is highly addictive [1-2]. Methamphetamine use has emerged as a major risk factor for acute ischemic stroke (AIS) in young adults worldwide in recent years [3-12].

The mechanisms by which methamphetamine causes acute ischemic stroke are unclear. Case studies and forensic analysis showed cerebral vasoconstriction, atherosclerotic stenoses, arterial dissection, vasculitis, and small vessel disease in patients with methamphetamine-associated stroke [2,6,8,12,13]. Methamphetamine use was also shown to produce a dose-dependent elevation of blood pressure and chronic hypertension [14-15]. Hypertension, vasoconstriction, and vascular toxicity were postulated as major mechanisms of ischemic stroke [13].

Methamphetamine use also induces sympathetic activation, cardiovascular injury, dilated cardiomyopathy (CMP) with significantly reduced left ventricle ejection fraction (EF) [16-17]. Compared with non-abusers, methamphetamine abusers have more severe dilated CMP on echocardiography [18]. Methamphetamine use has been increasingly identified as a major cause of cardiomyopathy and cardiac death in young adults [19-21].

There were isolated case reports on methamphetamine-associated cardiomyopathy and cardioembolic stroke [22, 23]. In a case series of methamphetamine-associated cardiomyopathy, one-third of the patients were found to have intraventricular thrombi on endomyocardial biopsy [19], suggesting a possible mechanism of cardioembolic stroke.

The aim of this study was to investigate the prevalence of cardiomyopathy in patients with acute ischemic stroke and methamphetamine use, and its relevance to cardioembolic stroke and outcome.

## **METHODS**

This is a retrospective cohort study. The study protocol was approved by the University of California Irvine Institutional Review Board (IRB) and the Ethics Committee. Informed consents were waived due to retrospective study design and minimal harm to the patients. All methods in the study were performed in accordance with the relevant guidelines and regulations.

### **Study population**

Consecutive AIS patients admitted at the University of California Irvine Medical Center from January 1, 2019 to December 30, 2022 were screened for the study. The patient list was generated by searching the Vizient Clinical Database using the International Classification of Diseases, 10th revision (ICD-10) codes for ischemic stroke or cerebral infarction as a primary or secondary discharge diagnosis. Vizient contains data from over 97% of US academic medical centers, including ours [24]. The following information was collected from the Vizient database and independent chart review from our electronic medical record system EPIC: age, gender, race, past medical history, home medications, social history including smoking and recreational drug use, National Institutes of Health Stroke Scale (NIHSS) scores, urine drug screen (UDS) results, LDL cholesterol levels, echocardiogram results, length of stay (LOS) in the intensive care unit and hospital, and functional outcome with modified Rankin Scale (mRS) scores at 3 months. All patients underwent standard diagnostic evaluation and treatment per American Heart Association (AHA)/American Stroke Association (ASA) guidelines [25].

Based on the history of methamphetamine abuse and urine drug screen (UDS), patients were divided into Meth and Non-meth group. The UDS was performed using EMIT II Plus Amphetamines Assay (Beckman Coulter, Inc) with a sensitivity and specificity of 94.3% and

93.3%, respectively [26]. Cardiomyopathy was defined with reduced left ventricular ejection fraction to 45% or less on clinical echocardiography report [18].

### **Statistical analysis**

Continuous variables were described by mean  $\pm$  standard deviation (SD) on the results of normality testing. Categorical variables were expressed by counts with percentages. Baseline characteristics and functional outcome at 3 months as determined by mRS were compared between Meth and Non-meth groups by the student t- test for continuous variables and chi-square test for categorical variables. Logistic regression model was performed to identify independent predictors of cardioembolic stroke. All statistical analyses were performed using SAS software. A 2-tailed value of  $p < 0.05$  was considered statistically significant.

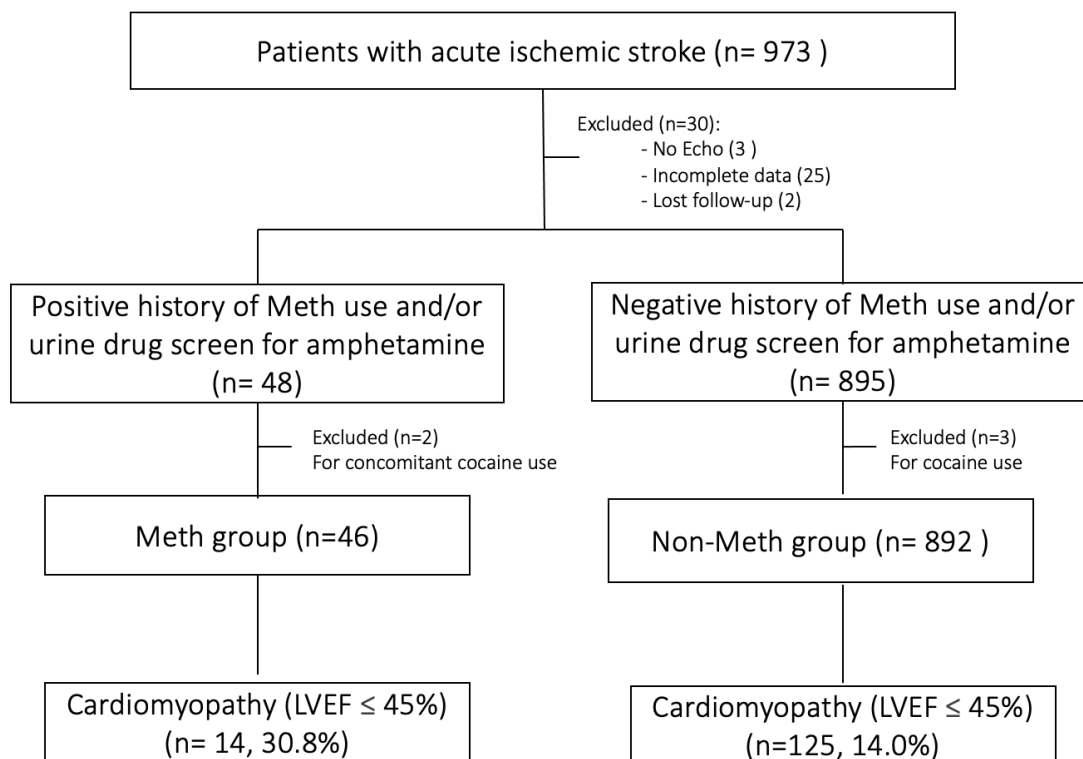
## **RESULTS**

973 consecutive patients were admitted for AIS during the study period (Figure 1). Thirty patients were excluded from the study due to incomplete data, lack of echocardiogram, or lost to follow-up. Among the remaining patients, 48 (4.9%) were identified to have a history of methamphetamine use or positive UDS. Two patients in the Meth group and 3 patients in the Non-meth group had concomitant cocaine use and were therefore excluded from the study.

Among the 46 remaining patients in the Meth group, 14 (30.4%) were found to have cardiomyopathy (CMP) on clinical echocardiogram report. In contrast, 125 patients (14%) in the Non-meth group were noted to have cardiomyopathy.

The basic characteristics of the Meth and Non-meth groups were shown in Table 1. Compared with the Non-meth group (n=892), the patients in the Meth group were significantly younger ( $53.2 \pm 10.0$  vs.  $69.7 \pm 15.2$ ,  $p < 0.001$ ), more likely male (76.6% vs. 50.0%,  $p < 0.001$ ) and White (43.5% vs. 30.5%,  $p < 0.05$ ), and less likely Asians (13% vs. 27.5%,  $p < 0.05$ ). They were less

likely to have history of atrial fibrillation (8.7% vs. 33.4%,  $p < 0.01$ ), hyperlipidemia (28.3% vs. 51.7%,  $p < 0.01$ ), or statin use (30.4% vs. 47.0%,  $p < 0.05$ , but more likely to have history of smoking (95.7% vs. 24.8%,  $p < 0.001$ ), heart failure (37.0% vs. 22.9%,  $p < 0.05$ ), cardiomyopathy (30.4% vs. 14.0%,  $p < 0.01$ ), or small vessel disease as etiology of stroke (25.5% vs 10.3%,  $p < 0.01$ ). There were no significant differences between the 2 groups in history of hypertension, diabetes, obesity, the use of antiplatelet or anticoagulation medications, initial NIHSS scores, LDL cholesterol levels, echocardiogram findings of patent foramen ovale or left ventricular thrombus, cardioembolism as cause of stroke, LOS in the ICU or hospital, good functional outcome (mRS 0-2) and mortality at 3 months.



**Figure 1.** The study flowchart

**Table 1.** Demographics and clinical characteristics between Meth group and Non-meth group.


Variables	Meth group	Non-meth group	P value
N	46	892	
Age	52.8 ± 9.64	69.7 ± 15.2	< 0.001
Female (%)	10 (21.7%)	421 (50.0%)	< 0.001
Race			
White	20 (43.5%)	272 (30.5%)	< 0.05
Hispanic	8 (17.4%)	131 (14.7%)	0.66
Black	8 (17.4%)	197 (20.1%)	0.41
Asian	6 (13.0%)	243 (27.2%)	< 0.05
Other	4 (8.7%)	49 (5.5%)	0.38
Hypertension	42 (91.3%)	771 (86.4%)	0.32
Diabetes	18 (39.1%)	400 (44.8%)	0.78
Hyperlipidemia	13 (28.3%)	461 (51.7%)	< 0.01
Atrial fibrillation	4 (8.7%)	300 (33.4%)	< 0.01
Heart failure	17 (37.0%)	204 (22.9%)	< 0.05
Obesity (BMI >30)	22 (47.8%)	317 (35.5%)	0.12
Smoking	44 (95.7%)	221 (24.8%)	< 0.001
Antiplatelet	11 (23.9%)	260 (28.1%)	0.5415
Anticoagulant	2 (4.4%)	134 (14.5%)	0.0536
Statin use	14 (30.4%)	436 (47.0%)	< 0.05
Initial NIHSS score	8.61 ± 8.00	10.32 ± 8.64	0.29
LDL cholesterol	85.36 ± 30.62	89.62 ± 41.85	0.37
Echo finding			
LV EF (≤45%)	14 (30.4%)	125 (14.0%)	< 0.01
Positive PFO (n, %)	3 (6.5%)	81 (9.1%)	0.53
LV Thrombus	4 (8.7%)	78 (8.7%)	0.96
Mechanism of stroke			
Large artery disease	9 (19.6%)	290 (32.5%)	0.55
Cardioembolism	20 (43.5%)	408 (45.7%)	0.89
Small vessel disease	12 (26.1%)	92 (10.3%)	< 0.01
Other causes	5 (10.9%)	125 (14.0%)	0.51
ICU LOS, median (IQR)	3.0 (2.0-7.0)	3.0 (1.0-5.0)	0.5271
Hospital LOS, median (IQR)	4.5 (2.0-8.0)	4.0 (2.0-7.0)	0.4179
mRS 0-2 at 3-month	28 (60.9%)	517 (58.0%)	0.83
Mortality at 3-month	4 (8.7%)	171 (19.2%)	0.14

LDL, low density lipoprotein cholesterol; mRS, modified Rankin score; NIHSS, National Institutes of Health Stroke Scale; PFO, patent foramen ovale.

In subgroup analysis of cardiomyopathy patients with and without methamphetamine use (Table in 2), the patients with methamphetamine use (Meth CMP group, n =14) remained significantly younger ( $52.4 \pm 9.5$  vs.  $70.9 \pm 15.4$ ,  $p < 0.001$ ) and more likely smoker (100% vs. 23.3%,  $p < 0.001$ ) than those without methamphetamine use (Non-meth CMP group, n=125). The patients with methamphetamine use were also found to have significantly lower left ventricle ejection fraction ( $26.0 \pm 9.59$  vs.  $32.47 \pm 9.52$ ,  $p < 0.01$ ) than those without methamphetamine use. In contrast, patients in the Non-meth-CMP group had significantly higher rates of hypertension, hyperlipidemia, and atrial fibrillation than those in the Meth CMP group.

Of note, despite significantly lower left ventricle ejection fraction, the patients in the Meth CMP group had significantly higher rate of favorable functional outcomes (mRS 0-2) at 3-month after AIS than the Non-meth CMP group (64.3% vs. 35.2%,  $p < 0.05$ ).

Logistic regression model was performed for multivariate analysis of risk factors of cardioembolic stroke. As shown in Table 3, among all clinical variables, only 2 were identified to be significantly associated with cardioembolic stroke. Atrial fibrillation was the most significant risk factor for cardioembolic stroke in the entire cohort (OR 20.89, 95% CI 14.112-30.91,  $p < 0.0001$ ). This was followed by methamphetamine-associated cardiomyopathy (OR 2.88, 95% CI 1.81-4.58,  $p < 0.0001$ ).





**Table 2.** Characteristics of cardiomyopathy patients with and without methamphetamine use

Variables	Meth CMP group	Non-Meth CMP group	P value
N	14	125	
Age	52.4 ± 9.5	70.9 ± 15.4	< 0.001
Female (%)	3 (21.4%)	46 (36.8%)	0.25
Race			
White	5 (35.7%)	43 (34.4%)	0.92
Hispanic	4 (28.6%)	24 (19.2%)	0.41
Black	1 (7.1%)	19 (15.2%)	0.42
Asian	2 (14.3%)	30 (24.0%)	0.41
Other	2 (14.3%)	9 (7.2%)	0.35
Hypertension	12 (85.7%)	124 (99.2%)	< 0.01
Diabetes	5 (35.7%)	54 (43.2%)	0.59
Hyperlipidemia	3 (21.4%)	62 (49.6%)	< 0.05
Atrial fibrillation	2 (14.3%)	62 (49.6%)	< 0.05
Heart failure	12 (85.7%)	98 (78.4%)	0.52
Obesity (BMI >30)	6 (42.9%)	46 (36.8%)	0.66
Smoking	14 (100%)	29 (23.2%)	< 0.001
Initial NIHSS score	10.71 ± 8.18	13.80 ± 8.59	0.10
LDL cholesterol	77.85 ± 23.66	81.90 ± 45.29	0.38
Echo finding			
LV EF	26.0 ± 9.59	32.47 ± 9.52	< 0.01
Positive PFO (n, %)	2 (14.3%)	8 (6.4%)	0.28
LV Thrombus	4 (28.6%)	24 (19.2%)	0.41
Mechanism of stroke			
Large artery disease	0 (0.0%)	23 (18.4%)	0.29
Cardioembolism	13 (92.9%)	91 (72.8%)	0.10
Small vessel disease	1 (7.1%)	5 (4.0%)	0.58
Other causes	1 (7.1%)	7 (5.6%)	0.81
mRS 0-2 at 3-month	9 (64.3%)	44 (35.2%)	< 0.05
Mortality at 3-month	2 (14.3%)	43 (34.4%)	0.13

LDL, low density lipoprotein cholesterol; mRS, modified Rankin score; NIHSS, National Institutes of Health Stroke Scale. P value < 0.05 was considered statistically significant.

**Table 3.** Positive predictors of cardioembolic stroke in patients with acute ischemic stroke

	OR of cardioembolic stroke	95% CI	P
A Fib	20.89	14.12 - 30.91	< 0.0001
Meth-associated CMP	2.88	1.81 – 4.58	<0.0001

A Fib, atrial fibrillation; CMP, cardiomyopathy; OR, odds ratios.

## DISCUSSION

Our results demonstrate that methamphetamine abuse was seen in 4.9% of the patients with AIS at our medical centers. Compared with AIS patients without methamphetamine use, patients with methamphetamine use were significantly younger and more likely male. They were less likely to have atrial fibrillation but highly associated with cardiomyopathy and propensity for cardioembolic stroke. Of note, the patients with methamphetamine-associated cardiomyopathy had better functional outcome at 3-month after stroke than those without methamphetamine use, possibly due to younger age and fewer comorbidities such as atrial fibrillation and hyperlipidemia.

Our cohort study corroborates previous reports on the younger and male predominance in patients with methamphetamine-associated cardiomyopathy [10, 27-29] and stroke [11, 12]. Public education and government policies are needed to increase the awareness of the major health concerns of methamphetamine use and the socioeconomic burden of methamphetamine associated disabilities [20,21].

The mechanisms of methamphetamine associated cardioembolic stroke remain unclear but are likely multifactorial. Methamphetamine may cause vasoconstriction, atherosclerotic disease, cardiac arrhythmias, and cardiomyopathy [30]. It was also shown to promote myocardial structural or electrical remodeling, such as increased ventricular fibrosis, inflammation, or myocyte function

[17, 31,32]. These remodeling of cardiac tissue following methamphetamine exposure promotes dilated cardiomyopathy and the susceptibility to cardiac arrhythmia and heart failure [17,30]. It has been theorized that heart failure, a clinically significant reduction in left ventricle EF associated with progressive LV dilatation and cardiac remodeling, will have a heightened risk for cardioembolic stroke [33]. Our study corroborated findings from previous reports that methamphetamine abusers have significantly lower left ventricle EF than non-abusers [17, 20, 28,29]. Of note, methamphetamine associated non-ischemic cardiomyopathy can be reversible and that methamphetamine cessation is associated with improvement in functional status [10, 23, 33].

Currently, there were only isolated case reports suggesting the association between cardiomyopathy and cardioembolic stroke in patients with methamphetamine use [22, 23]. We have previously reported on methamphetamine abuse increasing the risk of cerebral small vessel disease in young patients with AIS [12]. That study also found a high percentage (34%) of cardioembolic stroke in patients with methamphetamine abuse. This cohort study demonstrated that 92.9% of patients with methamphetamine-associated cardiomyopathy had cardioembolic stroke, suggesting cardiomyopathy as the possible mechanism of cardioembolic stroke. To our knowledge, we are the first cohort study to demonstrate methamphetamine-associated cardiomyopathy and the propensity of cardioembolic stroke.

Our study has a few limitations. First, it is a retrospective study with a relatively small sample size of ethnically diverse patient population in Southern California. The results may not be generalizable. Second, our data only suggested a possible association between methamphetamine-associated cardiomyopathy and cardioembolic stroke. Third, there was no information regarding the route, frequency, and duration of methamphetamine abuse. Lastly,

alcohol use and other cardiac co-morbidities could be confounding factors that cannot be ruled out in this retrospective study. Further large sample size studies are warranted to adjust for confounding factors and to establish the temporal relationship between methamphetamine-associated cardiomyopathy and cardioembolic stroke.

## **CONCLUSION**

In conclusion, our cohort study demonstrates that methamphetamine use increases the risk of cardiomyopathy and cardioembolic stroke in young adults.

## **Acknowledgements**

Dr. Sook Joung Lee is supported by Republic of Korea for this research project.

## **Authors Contributions**

SJL contributed to data acquisition, statistical analysis, data interpretation and drafting manuscript.

SL contributed statistical analysis and verification.

HB and DS contributed to data acquisition.

MS contributed to data interpretation and manuscript revision.

WY contributed to study design, data interpretation, drafting and finalizing the manuscript.

## **Data availability Statement**

Data of this study are available from the corresponding author on reasonable request.

## **Conflict of Interest Statement**

All authors had no conflict of interest.

## **Figure legends**

**Figure 1.** Study flowchart

**Table 1.** Demographics and clinical Characteristics between Meth group and Non-meth group.

**Table 2.** Characteristics of Cardiomyopathy Patients With or Without Methamphetamine Use

**Table 3.** Positive predictors of cardioembolic stroke in patients with acute ischemic stroke.

## REFERENCES

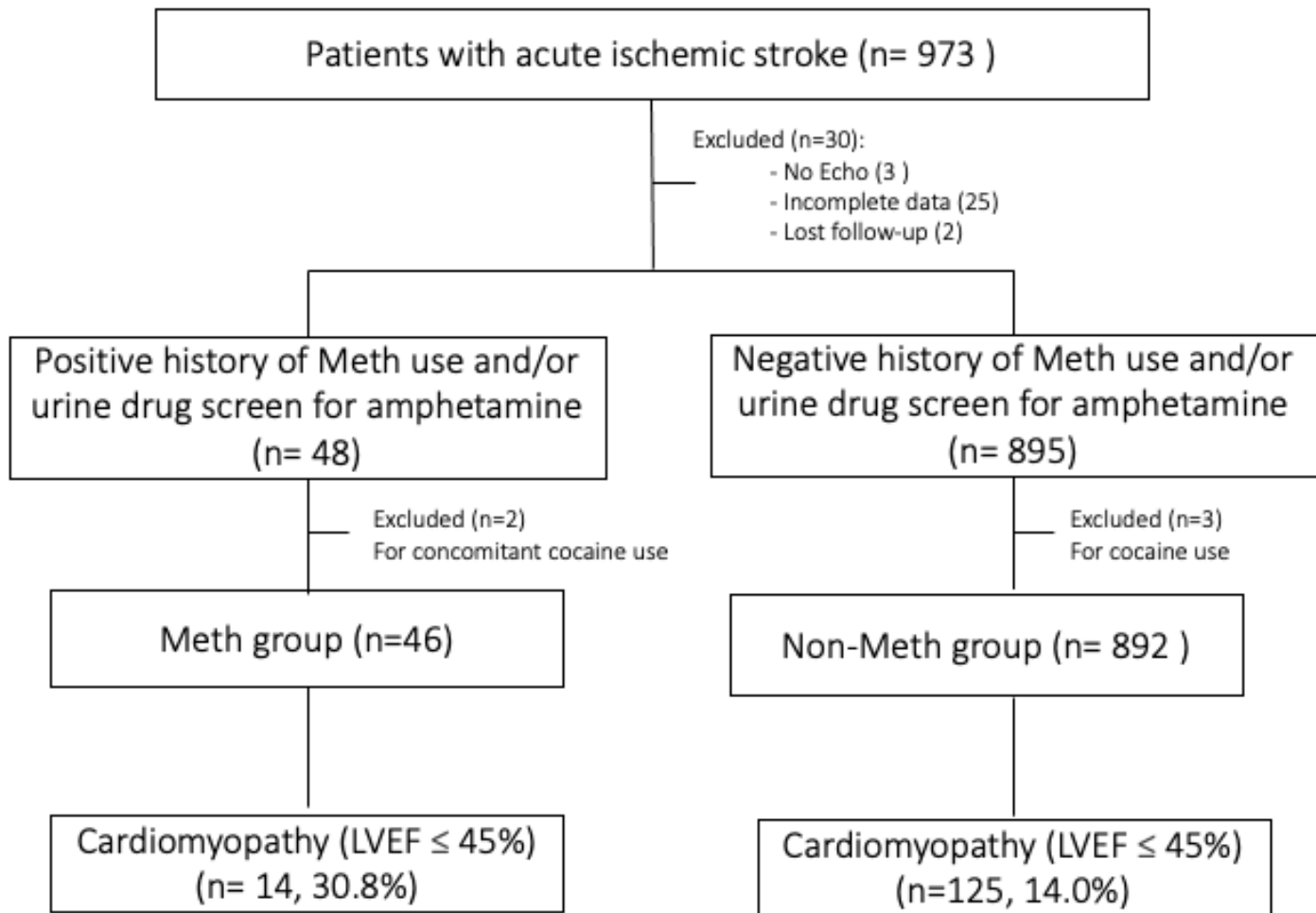
1. Fleckenstein AE, Volz TJ, Riddle EL, Gibb JW, Hanson GR. New insights into the mechanism of action of amphetamines. *Annu Rev Pharmacol Toxicol.* 2007;47:681-98.
2. Lappin JM, Darke S, Farrell M. Stroke and methamphetamine use in young adults: a review. *J Neurol Neurosurg Psychiatry.* 2017 Dec;88(12):1079-1091. doi: 10.1136/jnnp-2017-316071.
3. Rothrock JF, Rubenstein R, Lyden PD. Ischemic stroke associated with methamphetamine inhalation. *Neurology.* 1988 Apr;38(4):589-92.
4. Yen DJ, Wang SJ, Ju TH, Chen CC, Liao KK, Fuh JL, Hu HH. Stroke associated with methamphetamine inhalation. *Eur Neurol.* 1994;34(1):16-22. doi: 10.1159/000117002.
5. Perez JA Jr, Arsura EL, Strategos S. Methamphetamine-related stroke: four cases. *J Emerg Med.* 1999 May-Jun;17(3):469-71. doi: 10.1016/s0736-4679(99)00009-8.
6. McIntosh A, Hungs M, Kostanian V, Yu W. Carotid artery dissection and middle cerebral artery stroke following methamphetamine use. *Neurology.* 2006 Dec 26;67(12):2259-60.
7. Westover AN, McBride S, Haley RW. Stroke in young adults who abuse amphetamines or cocaine: a population-based study of hospitalized patients. *Arch Gen Psychiatry.* 2007 Apr;64(4):495-502.
8. Ho EL, Josephson SA, Lee HS, Smith WS. Cerebrovascular complications of methamphetamine abuse. *Neurocrit Care.* 2009;10(3):295-305.
9. Phillips MC, Leyden JM, Chong WK, Kleinig T, Czapran P, Lee A, Koblar SA, Jannes J. Ischaemic stroke among young people aged 15 to 50 years in Adelaide, South Australia. *Med J Aust.* 2011 Nov 21;195(10):610-4. doi: 10.5694/mja11.10558.
10. Huang MC, Yang SY, Lin SK, Chen KY, Chen YY, Kuo CJ, Hung YN. Risk of Cardiovascular Diseases and Stroke Events in Methamphetamine Users: A 10-Year Follow-Up Study. *J Clin Psychiatry.* 2016 Oct;77(10):1396-1403.
11. Darke S, Duflou J, Kaye S, Farrell M, Lappin J. Psychostimulant Use and Fatal Stroke in Young Adults. *J Forensic Sci.* 2019 Sep;64(5):1421-1426. doi: 10.1111/1556-4029.14056
12. Zhu Z, Vanderschelden B, Lee SJ, Blackwill H, Shafie M, Soun JE, Chow D, Chang P, Stradling D, Qian T, Yu W. Methamphetamine use increases the risk of cerebral small vessel disease in young patients with acute ischemic stroke. *Sci Rep.* 2023 May 25;13(1):8494. doi: 10.1038/s41598-023-35788-z.

13. Tsatsakis A, Docea AO, Calina D, Tsarouhas K, Zamfira LM, Mitrut R, Sharifi-Rad J, Kovatsi L, Siokas V, Dardiotis E, Drakoulis N, Lazopoulos G, Tsitsimpikou C, Mitsias P, Neagu M. A Mechanistic and Pathophysiological Approach for Stroke Associated with Drugs of Abuse. *J Clin Med*. 2019 Aug 23;8(9):1295. doi: 10.3390/jcm8091295.
14. Hart CL, Gunderson EW, Perez A, Kirkpatrick MG, Thurmond A, Comer SD, Foltin RW. Acute physiological and behavioral effects of intranasal methamphetamine in humans. *Neuropsychopharmacology*. 2008 Jul;33(8):1847-55.
15. Darke S, Kaye S, McKetin R, Duflou J. Major physical and psychological harms of methamphetamine use. *Drug Alcohol Rev*. 2008 May;27(3):253-62.
16. Neeki MM, Kulczycki M, Toy J, Dong F, Lee C, Borger R, Adigopula S. Frequency of Methamphetamine Use as a Major Contributor Toward the Severity of Cardiomyopathy in Adults  $\leq 50$  Years. *Am J Cardiol*. 2016 Aug 15;118(4):585-9. doi: 10.1016/j.amjcard.2016.05.057.
17. Schürer S, Klingel K, Sandri M, Majunke N, Besler C, Kandolf R, et al. Clinical Characteristics, Histopathological Features, and Clinical Outcome of Methamphetamine-Associated Cardiomyopathy. *JACC Heart Fail*. 2017;5(6):435-45.
18. Reddy PK, Chau E, Patel SV, Yang K, Ng TM, Elkayam U. Characteristics of Methamphetamine-associated Cardiomyopathy and the Impact of Methamphetamine Use on Cardiac Dysfunction. *Am J Cardiol*. 2021 Sep 1;154:86-91. doi: 10.1016/j.amjcard.2021.06.001.
19. Darke S, Duflou J, Kaye S. Prevalence and nature of cardiovascular disease in methamphetamine-related death: A national study. *Drug Alcohol Depend*. 2017;179:174-9.
20. Reddy P, Elkayam U. The Hidden Cost of Meth: Appraising the Socioeconomic Burden of Methamphetamine-Associated Cardiomyopathy. *Circ Cardiovasc Qual Outcomes*. 2021;14(7):e008214.
21. Zhao SX, Deluna A, Kelsey K, Wang C, Swaminathan A, Staniec A, et al. Socioeconomic Burden of Rising Methamphetamine-Associated Heart Failure Hospitalizations in California From 2008 to 2018. *Circ Cardiovasc Qual Outcomes*. 2021;14(7):e007638.
22. Dhaliwal JSS, Ansari SA, Ghosh S, Chitkara A, Khizer U. Duet of Death: Biventricular Thrombus in a Methamphetamine User. *Cureus*. 2023 Jun 3;15(6):e39917. doi: 10.7759/cureus.39917.

23. Yew KL, Go CS, Razali F, Rajendran P, Ooi PS, Anum A. Methamphetamine-associated reversible cardiomyopathy and stroke risk. *Eur Rev Med Pharmacol Sci*. 2014;18(17):2403-4.
24. Vizient. Clinical Data Base 2020 [cited 2023 September 20]. Available from: <https://www.vizientinc.com/our-solutions/clinical-solutions/clinical-data-base>.
25. Kernan WN, Ovbiagele B, Black HR, Bravata DM, Chimowitz MI, Ezekowitz MD, et al. Guidelines for the prevention of stroke in patients with stroke and transient ischemic attack: a guideline for healthcare professionals from the American Heart Association/American Stroke Association. *Stroke*. 2014;45(7):2160-236.
26. Osman S, Zhu Z, Farag M, Groysman L, Dastur C, Akbari Y, et al. Intracerebral hemorrhage: who gets tested for methamphetamine use and why might it matter? *BMC Neurol*. 2020;20(1):392.
27. Yeo KK, Wijetunga M, Ito H, Efird JT, Tay K, Seto TB, et al. The association of methamphetamine use and cardiomyopathy in young patients. *Am J Med*. 2007;120(2):165-71.
28. Ito H, Yeo KK, Wijetunga M, Seto TB, Tay K, Schatz IJ. A comparison of echocardiographic findings in young adults with cardiomyopathy: with and without a history of methamphetamine abuse. *Clin Cardiol*. 2009;32(6):E18-22.
29. Wang TKM, Kueh SA, Sutton T, Gabriel R, Lund M, Looi JL. Poor outcomes in methamphetamine-associated cardiomyopathy—a growing health issue in New Zealand. *N Z Med J*. 2019;132(1502):55-66.
30. Kevil CG, Goeders NE, Woolard MD, Bhuiyan MS, Dominic P, Kolluru GK, et al. Methamphetamine Use and Cardiovascular Disease. *Arterioscler Thromb Vasc Biol*. 2019;39(9):1739-46.
31. Liang R, Zhou Y, Wu F, Zhou C, Zhao X, Zhang M, et al. Effect of methamphetamine on potassium and L-type calcium currents in rat ventricular myocytes. *Toxicol Mech Methods*. 2010;20(8):458-65.
32. Sugimoto K, Okamura K, Tanaka H, Takashima S, Ochi H, Yamamoto T, et al. Methamphetamine directly accelerates beating rate in cardiomyocytes by increasing Ca(2+) entry via L-type Ca(2+) channel. *Biochem Biophys Res Commun*. 2009;390(4):1214-20.



33. Sliman S, Waalen J, Shaw D. Methamphetamine-Associated Congestive Heart Failure: Increasing Prevalence and Relationship of Clinical Outcomes to Continued Use or Abstinence. *Cardiovasc Toxicol.* 2016;16(4):381-9.



**Figure 1.** The study flowchart