

1 Nationwide SARS-CoV-2 Seroprevalence Trends in the Netherlands in the  
2 Variant of Concern Era, 2021-2022: an Ongoing Prospective Cohort Study

3

4 **Authors:** Eric R.A. Vos<sup>1</sup>, Cheyenne C.E. van Hagen<sup>1</sup>, Denise Wong<sup>1</sup>, Gaby Smits<sup>2</sup>, Marjan Kuijer<sup>2</sup>,  
5 Alienke J. Wijmenga-Monsuur<sup>2</sup>, Joanna Kaczorowska<sup>2</sup>, Robert S. van Binnendijk<sup>2</sup>, Fiona R.M. van der  
6 Klis<sup>2</sup>, Gerco den Hartog<sup>2,3</sup>, Hester E. de Melker<sup>1</sup>

7 **Affiliations**

- 8 1. Centre for Epidemiology and Surveillance, Centre for Infectious Disease Control, National  
9 Institute for Public Health and the Environment (RIVM), Bilthoven, the Netherlands  
10 2. Centre for Immunology of Infectious Diseases and Vaccines, Centre for Infectious Disease  
11 Control, National Institute for Public Health and the Environment (RIVM), Bilthoven, the  
12 Netherlands  
13 3. Laboratory of Medical Immunology, Radboud Institute for Molecular Life Sciences, Radboudumc,  
14 Nijmegen, the Netherlands

15

16 **Keywords:** SARS-CoV-2; COVID-19; seroprevalence trends; breakthrough infections; risk groups;  
17 prospective cohort; the Netherlands; pandemic preparedness

18

19 **ABSTRACT**

20

21 Background: Repeated population-based SARS-CoV-2 serosurveillance is key in complementing other  
22 surveillance tools.

23 Aim: Assessing trends in infection- and/or vaccine-induced immunity, including breakthrough  
24 infections, among (sub)groups and regions in the Dutch population during the Variant of Concern  
25 (VOC)-era whilst varying levels of stringency, to evaluate population immunity dynamics and inform  
26 future pandemic response planning.

27

28 Methods: In this prospective population-based cohort, randomly-selected participants (n=9,985)  
29 aged 1-92 years (recruited since early-2020) donated home-collected fingerstick blood samples at six  
30 timepoints in 2021-2022, covering waves dominated by Alpha, Delta, and Omicron (BA.1, BA.2,  
31 BA.5). IgG antibody assessments against Spike-S1 and Nucleoprotein were combined with  
32 vaccination- and testing data to estimate infection-induced (inf) and total (infection- and  
33 vaccination-induced) seroprevalence.

34

35 Results: In 2021, nationwide inf-seroprevalence rose modestly from 12% since Alpha to 26% amidst  
36 Delta, while total seroprevalence increased rapidly to nearly 90%, particularly fast in vulnerable  
37 groups (i.e., elderly and those with comorbidities). Highest infection rates were noticeable in  
38 adolescents and young adults, low/middle educated elderly, non-Western, contact professions  
39 (other than healthcare), and low-vaccination coverage regions. In 2022, following Omicron  
40 emergence, inf-seroprevalence elevated sharply to 62% and further to 86%, with frequent  
41 breakthrough infections and reduction of seroprevalence dissimilarities between most groups.  
42 Whereas >90% of <60-year-olds had been infected, 30% of vaccinated vulnerable individuals had not  
43 acquired hybrid immunity.

44

45 Conclusion: Although total SARS-CoV-2 seroprevalence had increased rapidly, infection rates were  
46 unequally distributed within the Dutch population. Ongoing tailored vaccination efforts and (sero-  
47 )monitoring of vulnerable groups remain important given their lowest rate of hybrid immunity and  
48 highest susceptibility to severe disease.

## 49 INTRODUCTION

50

51 Severe acute respiratory syndrome coronavirus-2 (SARS-CoV-2), causative agent of coronavirus  
52 disease 2019 (COVID-19), has imposed a tremendous burden on societies worldwide since its origin  
53 in late 2019. In the Netherlands, stringent measures including social distancing and several  
54 lockdowns (with fluctuating stringency (**Figure 1A**)) have been initiated to curb transmission and  
55 prevent the health system from collapsing. Nonetheless, initial waves of infection in spring 2020 and  
56 later in winter caused huge spikes in hospitalizations and over 20,000 deaths [1]. Although some  
57 regions were hit relatively hard, only a small proportion of the population had been infected [2, 3]. A  
58 nationwide vaccination campaign started in January 2021 and followed an age-, comorbidity- and  
59 healthcare worker (HCW)-based prioritization [4]. Vaccination coverage was generally high and  
60 effectively changed the epidemiology, yet at the same time Variants of Concern (VOC) emerged. The  
61 increased transmissibility [5] and severity of Alpha and, thereafter, Delta caused a steep rise in  
62 reported cases, hospital- and ICU admissions and deaths predominantly among unvaccinated  
63 individuals [5-10], thus mainly affecting groups with low access and uptake of vaccines [11]. The  
64 increasing number of reports of waning vaccine effectiveness triggered administration of booster  
65 doses in autumn 2021 [12]. Signs of enhanced immune escape became even more apparent with  
66 emergence of Omicron in late 2021, reflected by high numbers of reported (breakthrough) cases.  
67 Relatively fewer persons became severely-ill, enabling relaxation of control measures in spring 2022  
68 [10, 13].

69

70 To assist public health decision-making during different phases of the pandemic, e.g., regarding  
71 effectiveness of control measures and vaccination, or insights on severity of disease, it is essential to  
72 understand population dynamics of infection and vaccination, and potential disparities between  
73 groups [3, 8]. However, traditional surveillance methods underestimate prevalence and incidence as  
74 they rely on testing policy and (self/home) testing behavior, or because a proportion of cases is  
75 asymptomatic and remains undiagnosed [14]. Hence, seroepidemiology provides a unique  
76 opportunity in complementing other surveillance tools by estimating the prevalence of antibodies  
77 induced by infection and/or vaccination, generally indicative of protection against (severe) disease.  
78 However, the majority of serosurveys have a number of limitations, for instance: (1) usage of  
79 convenience samples that lack representativeness of the general population and in-depth  
80 questionnaire data, such as sample sets consisting of only healthcare workers or blood donors, or  
81 not including children and elderly; (2) usage of cross-sectional sample sets which carry a risk of  
82 missing previous infections due to waning immunity; or (3) sole qualitative assessment of the  
83 presence of antibodies, which limits the detection of re-infections [15].

84

85 Therefore, by means of the large nationwide population-based prospective PIENTER Corona (PICO)  
86 serosurveillance study, we sero-monitored the Dutch population across all ages throughout the  
87 acute phase of the pandemic in order to inform (short-term) decision-making. Here, we aim to  
88 assess trends in infection- and/or vaccine-induced immunity, including breakthrough infections,  
89 among different (sub)groups and regions in the population during the VOC-era in 2021-2022. These  
90 findings can serve as input for evaluation of the pandemic response and construction of future  
91 preparedness globally, and guide ongoing preventive strategies in the endemic/post-pandemic  
92 period.

93 **METHODS**

94

95 **Study population and materials**

96

97 Participants were recruited from the Dutch population registry via random selection in a region- and  
98 age-specific manner. Details on the sampling at the set-up of the PICO-study (using the framework of  
99 the PIENTER3 serosurvey established in 2016/17 [16]) and the additional sampling prior to round 2  
100 (PICO2, June 2020, after the first wave) have been described comprehensively [2, 3]. The PICO-  
101 cohort consists of a national sample with participants from across the country resembling the Dutch  
102 population (NL); and a sample with participants from municipalities with a lower childhood  
103 vaccination coverage (LVC, conceived in PIENTER3), inhabited by a relatively large portion of  
104 Orthodox-Reformed Protestants who largely refuse vaccination on religious grounds (commonly  
105 known as ‘the Bible belt’). Prior to PICO6 (November 2021), NL was supplemented equal to previous  
106 sampling with randomly-selected persons (predominately younger and older age groups due to  
107 drop-outs) to maintain power. Details are provided in the **Supplementary information** and  
108 **Supplementary Table S1**.

109

110 In the current study, participants were followed-up at six timepoints during the VOC-era (2021-  
111 2022), covering PICO4-9. Median inclusion date in PICO4 (17 Feb 2021) matched the start of Alpha  
112 dominance (i.e., PICO4 findings display the pre-Alpha period). Intervals between median dates of  
113 subsequent rounds greatly match waves dominated by single VOCs (except for Delta that covered  
114 PICO6 and also partly PICO7 due to its dominance up until the end of Dec 2021), namely: Alpha  
115 (PICO5: 23 June 2021), Delta (PICO6: 11 Nov 2021), Omicron-BA.1 (PICO7: 23 Mar 2022), Omicron-  
116 BA.2 (PICO8: 21 Jun 2022), and Omicron-BA.5 (PICO9: 9 Nov 2022) (**Figure 1A**). Each round,  
117 fingerstick blood samples were home-collected using contact-activated lancets (BD microtainer) and  
118 mini-collect serum tubes (Greiner) which were returned to the RIVM-laboratory in safety envelopes.  
119 Serum was processed and stored at -20°C awaiting analyses. Concurrently, participants were  
120 requested to complete a(n) (online) questionnaire regarding sociodemographics, occupation,  
121 comorbidities, self-reported SARS-CoV-2 testing (PCR/rapid-antigen test) and vaccination data, and  
122 factors related to potential exposure.

123

124 All persons aged  $\geq 12$  years had been offered primary vaccination before the end of 2021. Since  
125 autumn 2021, booster vaccination was provided (firstly) to vulnerable groups and HCW, and later to  
126 everyone  $\geq 18$  years during winter [4]. Since the beginning of 2022, primary vaccination has been  
127 available for 5-11 years-olds, yet nationwide coverage has been low (2%) [10]. Second boosters,  
128 targeted to at-risk groups, were offered in spring of 2022, and bivalent boosters followed that  
129 autumn [17].

130

131 **Serological analyses**

132

133 Serum samples were quantitatively analysed for SARS-CoV-2 immunoglobulin G (IgG) antibodies  
134 against Spike-S1 and Nucleoprotein (N) antigens using a validated fluorescent bead-based multiplex-  
135 immunoassay, as described previously [18]. Briefly, samples were diluted and incubated with S1-  
136 (Sino Biological, 40591-V08H) and N- (Sino Biological, 40588-V08B) coupled beads in SM01-buffer  
137 (Surmodics, USA) supplemented with 2% FCS, while shaking at room temperature in the dark for 45

138 minutes. Plates were washed three times with PBS, and incubated with PE-conjugated goat anti-  
139 human IgG (Jackson ImmunoResearch, 109-116-098) for thirty minutes. Following final washing  
140 steps, samples were acquired on a Luminex FlexMap3D. Antibody concentrations were interpolated  
141 from pooled sera calibrated against the World Health Organization (WHO) standard (NIBSC, 20/136)  
142 using a 5-parameter logistic fit. Seropositivity for anti-S1 was considered at a cut-off concentration  
143 of 10 binding antibody units (BAU) per milliliter (mL) and for anti-N at 14.3 BAU/mL, as derived from  
144 previous mixture modelling and receiver operator characteristics analyses [3, 19]. Applying these  
145 cut-offs to detect infection resulted in a specificity for anti-S1 of 99.9% and a sensitivity of 94.3%,  
146 and for anti-N of 98.0% and 86.0%, respectively.

147

## 148 **Statistical analyses**

149

150 Data cleaning, management and analyses were performed in SAS v.9.4. (SAS Institute Inc., USA) and  
151 R v.4.2.2.

152

153 At each study round, serological information (since the start of the study) was combined with  
154 vaccination- and testing data to assess infection-induced (inf) (at least once) and total (i.e., infection-  
155 and vaccination-induced) seroprevalence (equivalent to S1-seropositivity). More specifically, inf-  
156 seroprevalence was determined via anti-S1 seropositivity in unvaccinated (who could potentially  
157 sero-revert); and in vaccinated individuals via anti-N seropositivity, a SARS-CoV-2 positive test, or a  
158  $\geq 4$ -fold-increase in anti-S1 given they had not received a vaccine dose four weeks before their  
159 previous collection (i.e., the time for a vaccine response to peak, thereby ruling-out a potential  
160 further increase since previous collection due to vaccination and thus fold-increase in the current  
161 round). Participants aged  $\geq 12$  years enrolled since PICO6 were excluded for these analyses to  
162 prevent underestimation of previous infection as anti-N wanes relatively fast (which had to be relied  
163 on since most were vaccinated) and they lacked serological history [19]. Moreover, breakthrough  
164 infections could be identified in vaccinated persons who presented a positive SARS-CoV-2 test (at  
165 least 14 days) after their first vaccination, seroconverted for anti-N in rounds after their first  
166 vaccination or had a  $\geq 4$ -fold-increase if already anti-N seropositive, or had a  $\geq 4$ -fold-increase in anti-  
167 S1 given they had not received a vaccine dose four weeks before their previous collection.

168

169 Whole population (overall) and (sub)groups seroprevalence estimates (total and inf), vaccination  
170 coverage and -doses, and proportion of breakthrough infections (and their 95% confidence intervals  
171 (CIs)) were calculated. The survey design was taking into account and weights (per study sample)  
172 were incorporated using a set of sociodemographic characteristics (age, sex, ethnic background and  
173 urbanization degree) to match the Dutch population distribution following census data (of 1 January  
174 2020) from the Statistics Netherlands. Infection estimates were controlled for test performance  
175 characteristics subsequently [20]. Differences in seroprevalence between (sub)groups were  
176 determined by estimating the parameters of the beta distribution for these estimates using the  
177 methods of moments [21]. Risk ratios, their corresponding 95% CIs and p values were estimated by  
178 Monte Carlo simulations of the seroprevalence estimates. P values  $< 0.05$  were considered  
179 statistically significant. Smooth age-specific seroprevalence estimates were modelled with  
180 surveylogistic regressions incorporating B-splines, using Akaike's information criteria (AIC) for  
181 optimization of the number of percentile-placed knots.

## 182 RESULTS

183

### 184 Study population

185

186 **Table 1** shows the sociodemographic characteristics, comorbidity- and vaccination status of  
187 participants throughout the study period. The total number of unique participants with a serological  
188 assessment in the current cohort was 9,985 and fluctuated between 5,767-8,549 across study  
189 rounds; of which NL comprised 5,371-8,138 and LVC 275-470. Drop-outs ranged between 8-20% per  
190 study round, yet the proportions of all sociodemographics groups were comparable over time. In NL,  
191 age ranged between 1-92 years, with a median between 51-57 years, and generally highest  
192 participation in adults up to 80 years. The five sampled regions were consistently similarly (~20%)  
193 distributed across the cohort and over time (**Supplementary Figure S1 & Figure 1B**). Participants  
194 were more often women (56-57%); of native Dutch origin (88-89%), as compared to Western (7-9%)  
195 and non-Western (3-4%); and of lower urbanization degree (49-50%), versus moderate (31-32%) or  
196 high (19-20%). Educational level (high vs. middle/low) was nearly equally divided each round. One  
197 third could be classified as having comorbidities in 2021, which slightly increased to four out of ten  
198 in 2022. The majority of LVC-participants were of native Dutch, low urbanization degree (both  
199 >97%), low/middle educational level (71-73%), and median age as well as the proportion of having  
200 comorbidities (18-24%) was lower than in NL.

201

202 COVID-19 vaccination coverage as well as the number of doses followed a distinct age-pattern over  
203 time in NL, consistent with the vaccine roll-out (**Supplementary Figure S2**). Overall weighted  
204 vaccination coverage ( $\geq 1$  dose) in  $\geq 18$  years was 5% in February 2021, rose steeply to 78% in June,  
205 and increased further to 96% in November 2021. In March 2022, 78% had received a booster dose,  
206 and in June 18% had been administered a second booster. The latter increased to 42% in November,  
207 while 17% had received a fifth dose. Overall coverage did not differ much between sexes, yet was  
208 slightly higher in women <60 years in June 2021 for the primary series, but this difference was nearly  
209 erased by the end of the year and coverage remained stable for the doses thereafter. Uptake was  
210 consistently lower in the LVC (**Table 1**).

211

### 212 Infection-induced and total seroprevalence

213

#### 214 *Overall, by age and region*

215

216 The overall and stratified, inf- and total seroprevalence are displayed in **Figure 2** for 2021 (**A**) and  
217 2022 (**B**), and by age in **Figure 3** (**A**: inf; **B**: total).

218

219 In February 2021, pre-Alpha, the total seroprevalence reached 14% in the Dutch population and  
220 already spiked in the oldest ages, predominantly due to primary series vaccination. This continued  
221 with rapid pace during Alpha, rising overall to 65% in June, and among  $\geq 50$ -years-olds to >80%.  
222 Meanwhile, overall inf-seroprevalence rose from 12% to 20%, and displayed a sustained age-pattern  
223 with highest estimates in young adults (30%), followed by middle-aged adults (25%), and lowest in  
224 elderly (15%). Amidst Delta in November, total seroprevalence was high (87%) and reached >90% in  
225  $\geq 12$ -year-olds. Inf-seroprevalence increased further to 26%, with a relative steep rise in the age  
226 range from primary school to young adults, peaking around 40%, consistent with a relatively low

227 vaccination coverage. In 2022, total seroprevalence already reached 96% at the beginning of the  
228 year and remained high thereafter. Inf-seroprevalence increased sharply to 62% in March after  
229 emergence of Omicron-BA.1. Rapid expansion was especially noticeable in <60-year-olds, with  
230 estimates around 50% in the youngest ages and up to 90% in adolescents, from where it decreased  
231 linearly with age (e.g., 50% in 60-year-olds and 30% in 80-year-olds). After easing of most control  
232 measures in spring, overall inf-seroprevalence rose further to 74% in June following Omicron-BA.2.  
233 While nearly reaching 100% in adolescents, relative steepest increases were now seen in >40-year-  
234 olds (up to 80% in 50-year-olds and 40% in 80-year-olds), despite high booster vaccination uptake  
235 earlier. In November, following Omicron-BA.5, inf-seroprevalence increased further to 86% in NL,  
236 and >90% among those aged <60 years. Regardless of this relatively large increase in adults during  
237 the second half of 2022, still 30% of those vaccinated aged  $\geq 60$  years lacked hybrid immunity, and  
238 50%  $\geq 80$  years.

239

240 Most infections pre-Alpha were observed in the South-East region (15%) and fewest in the North  
241 (10%) (**Supplementary Figure S3** displays all 25 Municipality Health Service (GGD) regions). A fairly  
242 similar picture was extended across 2021, with steepest increase in the South-East (31%) and Mid-  
243 West (27%), and lowest in the North (20%). Low urbanized areas had the highest inf-seroprevalence  
244 throughout the study period, but most pronounced in June 2021 following Alpha. Generally, regional  
245 differences did not further intensify in 2022. In LVC, inf-seroprevalence was considerably higher in  
246 NL, especially noticeable till the end of 2021 ( $\sim 1.5$  times), and reached >90% after Omicron-BA.5  
247 at the end of 2022. Correspondingly, the total seroprevalence was nearly consistently lower in that  
248 period, illustrative of the lower COVID-19 vaccination coverage.

249

#### 250 *(Sub)groups*

251

252 Both inf- and total seroprevalence did not differ much between sexes. Interestingly, middle-aged  
253 women (50-59 years) were significantly more often infected than men already pre-Alpha (16% vs.  
254 9%, respectively,  $p < 0.001$ ) and remained higher throughout 2021-2022 (**Supplementary Figure S4**).  
255 Conversely, men aged  $\geq 75$  years had on average two times higher inf-seroprevalence up until the  
256 beginning of 2022 (39% vs. 24% in women,  $p < 0.001$ ).

257

258 Among persons of non-Western descent, inf-seroprevalence rose sharper during Alpha than in  
259 Western and native Dutch ( $\sim 1.5$  times), and this was particularly noticeable among <40-year-olds  
260 (**Supplementary Figure S5**). Higher inf-seroprevalence persisted among non-Western in all  
261 subsequent waves, yet the total seroprevalence was consistently lowest in this group. Moreover,  
262 low/middle-educated persons (from age 25 years) had a significantly higher inf-seroprevalence  
263 compared to high-educated already pre-Alpha and throughout 2021 (e.g., June: 21% vs. 17%,  
264  $p = 0.006$ ). This was consistent for all age groups (**Supplementary Figure S6**), but most noticeable in  
265 individuals aged  $\geq 60$  years (Alpha: 18% vs. 12%, respectively,  $p < 0.001$ ; and amidst Delta: 22% vs.  
266 13%, respectively,  $p = 0.002$ ), coinciding with a lower total seroprevalence in June ( $p = 0.03$ ). Age  
267 group-specific seroprevalence estimates became more comparable after the emergence of Omicron.  
268 Further, in persons with underlying comorbidities, targeted for early COVID-19 vaccination, a very  
269 high total seroprevalence (>95%) was already observed in June 2021. Inf-seroprevalence continued  
270 to be relatively low in this group compared to those without up until March 2022 after Omicron BA.1  
271 (45% vs. 70%), yet increased with higher rate thereafter (after Omicron-BA.5: 73% vs. 91%).

272

273 *Occupation*

274

275 Inf-seroprevalence in the working-age population (18-67 years) followed a similar pattern as the  
276 general population but was slightly higher throughout 2021-2022. HCW had among the highest inf-  
277 seroprevalence pre-Alpha (20%) – together with transportation and production sectors (**Figure 4AB**)  
278 – which was mainly due to high rates in elderly (home)workers (33%) and hospital employees (22%)  
279 (**Figure 4CD**). Congruent with a very high total seroprevalence already in June 2021 (>90%) due to  
280 prioritization of vaccination, the rate of infections in HCW slowed down (after Alpha: 26%; amidst  
281 Delta: 30%) when compared to nationwide, and was similar in March 2022 after Omicron-BA.1. Inf-  
282 seroprevalence rates in other HCW sectors were relatively moderate to low until emergence of  
283 Omicron-BA.1. Furthermore, sharpest inf-seroprevalence elevations in 2021 were seen among those  
284 working in contact professions other than HCW (from 15% in February to 32% in November) and  
285 day-care & primary education (from 15% to 29%), and these trends extended into the Omicron  
286 waves (e.g., after Omicron-BA.2 (June 2022): 82% and 91%, respectively; to note, the median age  
287 was lowest in these sectors: between 43-45 years, vs. others sectors 47-55). Conversely, office  
288 employees and those working in middle/higher education had nearly two times lower estimates  
289 than HCW after Alpha in June 2021, and only started to catch-up with countrywide estimates  
290 thereafter, particularly since emergence of Omicron.

291

292 **Breakthrough infections**

293

294 Primarily in 2021, inf-seroprevalence was significantly lower among adult vaccinees, e.g., amidst  
295 Delta in November 2021 (22% vs. 42% among unvaccinated,  $p<0.001$ ) (**Figure 2**) (notably, in  
296 February 2021, inf-seroprevalence was higher among vaccinated due to the high proportion of  
297 previously-infected HCW pre-Alpha). This can be explained by presence of only few breakthrough  
298 infections detected (February-June 2021, Alpha: 0.5% [95% CI: 0.2-0.7]; and June-November 2021,  
299 amidst Delta: 3.5% [2.9-4.3]). Inf-seroprevalence elevated with rather similar rate among vaccinated  
300 and unvaccinated since emergence of Omicron-BA.1, and even steeper in vaccinated after Omicron-  
301 BA.2 (mid-2022, from 56% to 68%). These data correspond to the large proportion of breakthrough  
302 infections observed among vaccinated since Omicron (December 2021-March 2022 (Omicron-BA.1):  
303 43% [40-46]; March-June 2022 (Omicron-BA.2): 23% [21-26]; June-November 2022 (Omicron-BA.5):  
304 28% [25-30]), at first mainly among adolescents up until middle-aged adults, but since Omicron-BA.2  
305 equally across adults up to 80 years (**Figure 5**).



## 306 DISCUSSION

307

308 This large Dutch nationwide population-based prospective seroepidemiological study supported  
309 public health decision-making during the COVID-19 pandemic, e.g., as input for the Outbreak  
310 Management Team, Ministry of Health, Dutch Health Council, and forecasting/modelling purposes.  
311 Our study underscores the importance of serosurveillance globally to supplement other tools in  
312 better understanding population immunity and susceptibility over time. The total seroprevalence in  
313 NL increased rapidly during the VOC-era, especially in persons prioritized for vaccination. However,  
314 infection rates were unequally distributed between (sub)groups and regions pre-Omicron, with  
315 highest rates noticeable in adolescents and young adults, low/middle educated elderly, non-  
316 Western, those in contact professions including working in childcare, the South-East region and LVC.  
317 Following multiple waves of Omicron, the number of breakthrough infections increased steeply,  
318 resulting in hybrid immunity for the majority of the Dutch population by the end of 2022.  
319 Nevertheless, approximately three out of ten vaccinated vulnerable individuals (i.e., elderly and  
320 those with comorbidities) had not acquired hybrid immunity, necessitating tailored vaccination  
321 efforts to reduce the risk of severe disease upon infection and ongoing sero-monitoring.

322

323 Our population-based results are indicative of the prevention of infections by vaccination pre-  
324 Omicron and in line with vaccine-effectiveness studies [12]. Particular illustrative was the relative  
325 modest increase in infections in HCW since vaccination despite having the highest exposure –  
326 potentially in combination with adequate use of personal protective equipment. Conversely, the rate  
327 of infection remained high in the South-Eastern part of the country, i.e., the epicenter of the first  
328 wave in 2020, and particularly in LVC [2]. A combination of lower vaccine uptake (consistent with  
329 lower total seroprevalence) and increased exposure, e.g., due to lower adherence to measures,  
330 might have caused this and has also been observed in similar communities abroad [4, 22]. Future  
331 research should gain more understanding of the concerns in harder-to-reach regions and apply this  
332 knowledge as input for tailor-made preventive programs. Further, in-depth research on air quality  
333 across regions and (the course of) COVID-19 is ongoing, and pre-liminary analysis may point towards  
334 a potential increased risk in the lower urbanized areas in the South-East, recognized for poorer air  
335 quality due to intensive livestock farming [23].

336

337 Importantly, relatively higher rates of infection were also observed in low/middle educated elderly  
338 and non-Western, particularly after roll-out of vaccination. The pandemic entails a double burden  
339 for the most disadvantaged groups: increased likelihood of infection, e.g., due to fewer  
340 opportunities to work remotely, as well as severe disease due to weaker health or access to health.  
341 Our data are congruent with lower vaccination uptake and higher ICU admissions in these specific  
342 groups in our country and abroad during this period [4, 24, 25]. Global efforts are needed to tackle  
343 mis-information and apply tailor-made approaches for vaccination, especially since coverage against  
344 vaccine-preventable diseases in general is declining.

345

346 A distinct age-pattern was seen up until 2021 with infections peaking in adolescents, young adults  
347 and middle-aged women. While nationwide stringent control measures were still in effect, primary  
348 schools remained open during emergence of VOCs. As opposed to what we observed pre-Alpha [3],  
349 the rate of infections in the youngest age groups rose quickly which corresponds to reports on  
350 increased transmissibility and susceptibility in children since emergence of VOCs [26]. Consistent

351 herewith, inf-seroprevalence elevated in those working in childcare/primary schools. Pre-Alpha,  
352 highest rates of infections were seen in those working in transportation, production and healthcare.  
353 Steepest increases were later observed in those working in other contact professions, such as  
354 physiotherapists, barbers and store employees, whereas office employees were still among the  
355 lowest infected, presumably due to working remotely. Also, despite the highest rates in young  
356 adults, professions in middle/higher education were comparable to nationwide estimates. However,  
357 unless demonstrative beneficial effects of limited contact and remote schooling on reducing viral  
358 transmission, potential detrimental social- and cognitive effects should be taken into account while  
359 evaluating the pandemic response [27].

360

361 To our knowledge this is the first study to present population estimates of breakthrough infections  
362 across various VOCs. After the first Omicron wave and relaxation of control measures, the rate of  
363 infections had increased steeply across the population, consistent with reports globally [15], and  
364 differences in seroprevalence between groups shrunk. A large elevation in the proportion of  
365 breakthrough infections was observed, firstly among adolescents up until middle-aged adults and in  
366 later waves across all adults. This trend is most likely explained by increased booster doses in elderly,  
367 which have shown to be effective against infection in the short term, but susceptibility increased due  
368 to waning immunity alongside novel variants with enhanced immune-escape features [12]. Hybrid  
369 immunity has proven to be most effective against future infection [28], potentially mediated by  
370 mucosal antibodies in the upper respiratory tract [29], and severe disease [30]. These observations  
371 on susceptibility in the most vulnerable persons contributed to targeted prevention strategies with  
372 novel booster doses for winter 2023, and warrants ongoing sero-monitoring (of vaccine-  
373 effectiveness).

374

375 This study has several strengths and limitations that should be highlighted. This is one of the largest  
376 prospective population-based serological cohorts, including children and a unique LVC sample, that  
377 was set-up since the beginning of the pandemic and is still ongoing. Since (self-)testing has been  
378 reduced significantly after relaxation of measures in 2022, serological assessment including boosting  
379 of antibodies, is essential for detection of (breakthrough) infections, and for guiding surveillance.  
380 Further, we did not observe a significant reduction in sensitivity of anti-N in vaccinees [31], which  
381 has been reported by some [32], and although this marker is known to wane quicker than anti-S1  
382 [19, 33], we expect high case ascertainment due to repeated sampling with short intervals.  
383 Moreover, in-depth questionnaire data allowed investigation into (sub)groups. Response rates in  
384 children were rather low and drop-out rates high, however since children were less restricted by  
385 control measures and schools were mostly open, we do not expect large differences between  
386 children in terms of exposure, and this was also confirmed by contact data [34, 35]. Despite random  
387 selection and weighting our sample, some groups are underrepresented, such as those living in  
388 nursing homes – that were hit hard pre-Alpha – and non-Western, who might have refrained from  
389 participation due to digital- and/or language barriers. Study participants may generally adhere better  
390 to control measures, also reflected by a higher vaccination coverage than the general population,  
391 which could have underestimated inf-seroprevalence especially pre-Omicron.

392

393 To conclude, this seroepidemiological study has provided important insights on dynamics of SARS-  
394 CoV-2 population immunity resulting from (breakthrough) infections and vaccination during the  
395 VOC-era. These results will be key in evaluation of control measures, construction of future

396 pandemic response planning, and guiding ongoing preventive strategies for the most vulnerable  
397 groups. In the endemic/post-pandemic phase, this robust serological framework will be vital for the  
398 relevant challenges ahead, such as unravelling risk factors for post-COVID and mucosal immunity,  
399 but also in gaining knowledge on the (potentially permanent) epidemiological changes observed for  
400 other respiratory pathogens during the pandemic, e.g., respiratory syncytial virus and group A  
401 streptococcal [36, 37].

402

403

#### 404 **STATEMENTS**

405

406 **Ethical statement:** The Medical Research Ethics Committees United (MEC-U) approved the study,  
407 conformed to the principles embodied in the Declaration of Helsinki, and all participants provided  
408 written informed consent.

409

410 **Funding statement:** This study was funded by the Ministry of Health, Welfare and Sport (VWS) in the  
411 Netherlands.

412

413 **Acknowledgements:** We greatly acknowledge the participants of the PIENTER Corona (PICO) study.  
414 We also wish to thank the logistical research team for all the help concerning organization and  
415 logistics, the lab technicians for the serological analyses, and Susan van den Hof for critically  
416 reviewing the manuscript.

417

418 **Conflict of interest:** None declared.

419

420

#### 421 **REFERENCES**

422

- 423 1. Statistics Netherlands (CBS). Statline: Cause of death 2021 [Available from:  
424 <https://opendata.cbs.nl/#/CBS/en/dataset/7233ENG/table>.
- 425 2. Vos ERA, den Hartog G, Schepp RM, Kaaijk P, van Vliet J, Helm K, et al. Nationwide  
426 seroprevalence of SARS-CoV-2 and identification of risk factors in the general population of the  
427 Netherlands during the first epidemic wave. *Journal of Epidemiology and Community Health*.  
428 2020;jech-2020-215678.
- 429 3. Vos ERA, van Boven M, den Hartog G, Backer JA, Klinkenberg D, van Hagen CCE, et al.  
430 Associations between measures of social distancing and SARS-CoV-2 seropositivity: a nationwide  
431 population-based study in the Netherlands. *Clin Infect Dis*. 2021.
- 432 4. Valk A, van Meijeren D, Smorenburg N, Neppelenbroek N, van Iersel S, de Bruijn S, et al.  
433 COVID-19 vaccination coverage in the Netherlands in 2021. National Institute for Public Health and  
434 the Environment (RIVM); 2022.
- 435 5. Campbell F, Archer B, Laurenson-Schafer H, Jinnai Y, Konings F, Batra N, et al. Increased  
436 transmissibility and global spread of SARS-CoV-2 variants of concern as at June 2021.  
437 *Eurosurveillance*. 2021;26(24):2100509.
- 438 6. Bager P, Wohlfahrt J, Fonager J, Rasmussen M, Albertsen M, Michaelsen TY, et al. Risk of  
439 hospitalisation associated with infection with SARS-CoV-2 lineage B.1.1.7 in Denmark: an  
440 observational cohort study. *The Lancet Infectious Diseases*. 2021.

- 441 7. Twohig KA, Nyberg T, Zaidi A, Thelwall S, Sinnathamby MA, Aliabadi S, et al. Hospital  
442 admission and emergency care attendance risk for SARS-CoV-2 delta (B.1.617.2) compared with  
443 alpha (B.1.1.7) variants of concern: a cohort study. *The Lancet Infectious Diseases*. 2022.
- 444 8. de Boer PT, van de Kassteel J, Vos ERA, van Asten L, Dongelmans DA, van Gageldonk-  
445 Lafeber AB, et al. Age-specific severity of severe acute respiratory syndrome coronavirus 2 in  
446 February 2020 to June 2021 in the Netherlands. *Influenza and Other Respiratory Viruses*.  
447 2023;17(8):e13174.
- 448 9. de Gier B, van Asten L, Boere TM, van Roon A, van Roekel C, Pijpers J, et al. Effect of COVID-  
449 19 vaccination on mortality by COVID-19 and on mortality by other causes, the Netherlands, January  
450 2021-January 2022. *Vaccine*. 2023;41(31):4488-96.
- 451 10. Dutch Government. Corona dashboard 2023 [Available from:  
452 <https://coronadashboard.rijksoverheid.nl/>.
- 453 11. Pijpers J, van Roon A, van Roekel C, Labuschagne L, Smagge B, Ferreira JA, et al.  
454 Determinants of COVID-19 Vaccine Uptake in The Netherlands: A Nationwide Registry-Based Study.  
455 *Vaccines*. 2023;11(9):1409.
- 456 12. Feikin DR, Higdon MM, Abu-Raddad LJ, Andrews N, Araos R, Goldberg Y, et al. Duration of  
457 effectiveness of vaccines against SARS-CoV-2 infection and COVID-19 disease: results of a systematic  
458 review and meta-regression. *The Lancet*. 2022;399(10328):924-44.
- 459 13. Huiberts AJ, de Gier B, Hoeve CE, de Melker HE, Hahné SJM, Hartog Gd, et al. Vaccine  
460 effectiveness of primary and booster COVID-19 vaccinations against SARS-CoV-2 infection in the  
461 Netherlands from 12 July 2021 to 6 June 2022: a prospective cohort study. *International Journal of*  
462 *Infectious Diseases*. 2023.
- 463 14. McDonald SA, Miura F, Vos ERA, van Boven M, de Melker HE, van der Klis FRM, et al.  
464 Estimating the asymptomatic proportion of SARS-CoV-2 infection in the general population: Analysis  
465 of nationwide serosurvey data in the Netherlands. *European Journal of Epidemiology*. 2021.
- 466 15. Bergeri I, Whelan MG, Ware H, Subissi L, Nardone A, Lewis HC, et al. Global SARS-CoV-2  
467 seroprevalence from January 2020 to April 2022: A systematic review and meta-analysis of  
468 standardized population-based studies. *PLOS Medicine*. 2022;19(11):e1004107.
- 469 16. Verberk JDM, Vos RA, Mollema L, van Vliet J, van Weert JWM, de Melker HE, van der Klis  
470 FRM. Third national biobank for population-based seroprevalence studies in the Netherlands,  
471 including the Caribbean Netherlands. *BMC Infect Dis*. 2019;19(1):470.
- 472 17. (RIVM) NifPHatE. Vaccination figures for autumn 2022 round of COVID-19 repeat vaccination  
473 Bilthoven: RIVM; 2023 [updated August 23, 2023. Available from: [https://www.rivm.nl/en/covid-19-](https://www.rivm.nl/en/covid-19-vaccination/figures-vaccination-programme)  
474 [vaccination/figures-vaccination-programme](https://www.rivm.nl/en/covid-19-vaccination/figures-vaccination-programme)
- 475 18. den Hartog G, Schepp RM, Kuijper M, GeurtsvanKessel C, van Beek J, Rots N, et al. SARS-CoV-  
476 2-Specific Antibody Detection for Seroepidemiology: A Multiplex Analysis Approach Accounting for  
477 Accurate Seroprevalence. *The Journal of Infectious Diseases*. 2020.
- 478 19. van den Hoogen LL, Smits G, van Hagen CCE, Wong D, Vos ERA, van Boven M, et al.  
479 Seropositivity to Nucleoprotein to detect mild and asymptomatic SARS-CoV-2 infections: a  
480 complementary tool to detect breakthrough infections after COVID-19 vaccination? *Vaccine*. 2022.
- 481 20. Rogan WJ, Gladen B. Estimating prevalence from the results of a screening test. *Am J*  
482 *Epidemiol*. 1978;107(1):71-6.
- 483 21. Bickel PJ, Doksum KA. *Mathematical statistics: basic ideas and selected topics, volumes I-II*  
484 package: CRC Press; 2015.
- 485 22. Gaskell KM, Johnson M, Gould V, Hunt A, Stone NRH, Waites W, et al. SARS-CoV-2  
486 seroprevalence in a strictly-Orthodox Jewish community in the UK: A retrospective cohort study. *The*  
487 *Lancet Regional Health - Europe*. 2021;6:100127.
- 488 23. (RIVM) NifPHatE. Air quality and COVID-19: RIVM; 2023 [Available from:  
489 <https://www.rivm.nl/en/coronavirus-covid-19/research/air-quality-and-covid-19>.
- 490 24. Racial and Ethnic Disparities in COVID-19-Related Infections, Hospitalizations, and Deaths.  
491 *Annals of Internal Medicine*. 2021;174(3):362-73.

- 492 25. Riou J, Panczak R, Althaus CL, Junker C, Perisa D, Schneider K, et al. Socioeconomic position  
493 and the COVID-19 care cascade from testing to mortality in Switzerland: a population-based analysis.  
494 *The Lancet Public Health*. 2021;6(9):e683-e91.
- 495 26. Zhu Y, Xia Y, Pickering J, Bowen AC, Short KR. The role of children in transmission of SARS-  
496 CoV-2 variants of concern within households: an updated systematic review and meta-analysis, as at  
497 30 June 2022. *Eurosurveillance*. 2023;28(18):2200624.
- 498 27. Luijten MAJ, van Muilekom MM, Teela L, Polderman TJC, Terwee CB, Zijlmans J, et al. The  
499 impact of lockdown during the COVID-19 pandemic on mental and social health of children and  
500 adolescents. *Quality of Life Research*. 2021;30(10):2795-804.
- 501 28. de Gier B, Huiberts AJ, Hoeve CE, den Hartog G, van Werkhoven H, van Binnendijk R, et al.  
502 Effects of COVID-19 vaccination and previous infection on Omicron SARS-CoV-2 infection and  
503 relation with serology. *Nature Communications*. 2023;14(1):4793.
- 504 29. Marking U, Bladh O, Havervall S, Svensson J, Greilert-Norin N, Aguilera K, et al. 7-month  
505 duration of SARS-CoV-2 mucosal immunoglobulin-A responses and protection. *The Lancet Infectious*  
506 *Diseases*.
- 507 30. Bobrovitz N, Ware H, Ma X, Li Z, Hosseini R, Cao C, et al. Protective effectiveness of previous  
508 SARS-CoV-2 infection and hybrid immunity against the omicron variant and severe disease: a  
509 systematic review and meta-regression. *The Lancet Infectious Diseases*.
- 510 31. Hartog Gd, Andeweg S, Hoeve C, Smits G, Voordouw B, Eggink D, et al. Assessment of hybrid  
511 population immunity to SARS-CoV-2 following breakthrough infections of distinct SARS-CoV-2  
512 variants. *Research Square*; 2023.
- 513 32. Navaratnam AMD, Shrotri M, Nguyen V, Braithwaite I, Beale S, Byrne TE, et al. Nucleocapsid  
514 and spike antibody responses following virologically confirmed SARS-CoV-2 infection: an  
515 observational analysis in the Virus Watch community cohort. *International Journal of Infectious*  
516 *Diseases*. 2022;123:104-11.
- 517 33. den Hartog G, Vos ERA, van den Hoogen LL, van Boven M, Schepp RM, Smits G, et al.  
518 Persistence of antibodies to SARS-CoV-2 in relation to symptoms in a nationwide prospective study.  
519 *Clinical Infectious Diseases*. 2021.
- 520 34. Backer JA, Mollema L, Vos ER, Klinkenberg D, van der Klis FR, de Melker HE, et al. Impact of  
521 physical distancing measures against COVID-19 on contacts and mixing patterns: repeated cross-  
522 sectional surveys, the Netherlands, 2016–17, April 2020 and June 2020. *Eurosurveillance*.  
523 2021;26(8):2000994.
- 524 35. Backer JA, Bogaardt L, Beutels P, Coletti P, Edmunds WJ, Gimma A, et al. Dynamics of non-  
525 household contacts during the COVID-19 pandemic in 2020 and 2021 in the Netherlands. *Scientific*  
526 *Reports*. 2023;13(1):5166.
- 527 36. den Hartog G, van Kasteren PB, Schepp RM, Teirlinck AC, van der Klis FRM, van Binnendijk  
528 RS. Decline of RSV-specific antibodies during the COVID-19 pandemic. *The Lancet Infectious*  
529 *Diseases*.
- 530 37. de Gier B, Marchal N, de Beer-Schuurman I, te Wierik M, Hooiveld M, Group I-AS, et al.  
531 Increase in invasive group A streptococcal (*Streptococcus pyogenes*) infections (iGAS) in young  
532 children in the Netherlands, 2022. *Eurosurveillance*. 2023;28(1):2200941.

**Table 1. Description of the PIENTER Corona (PICO) study cohort in 2021 and 2022, covering study rounds 4 to 9.**

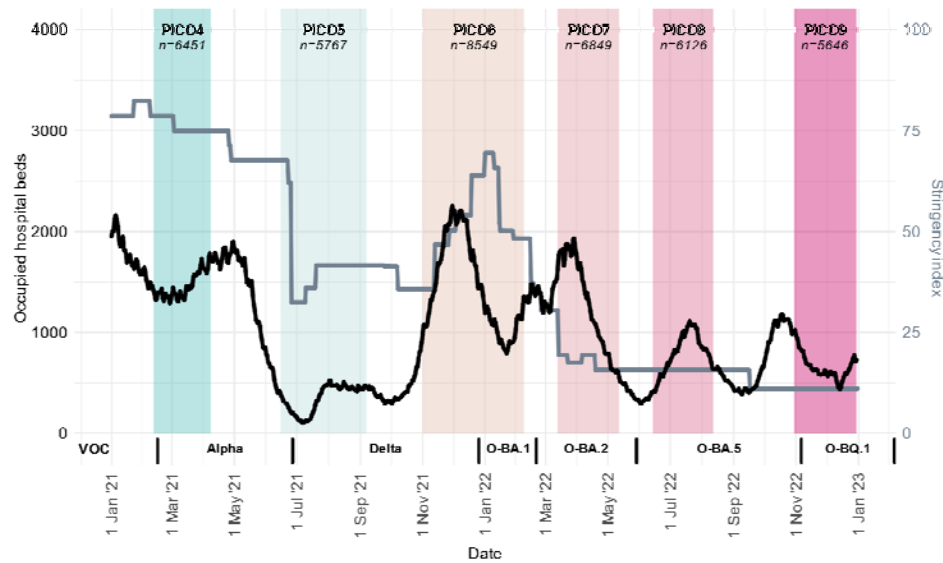
		Feb '21 (PICO4)		Jun '21 (PICO5)		Nov '21 (PICO6)		Mar '22 (PICO7)		Jun '22 (PICO8)		Nov '22 (PICO9)	
		n	%	n	%	n	%	n	%	n	%	n	%
<b>National sample</b>													
	All ages	5,981	100.0	5,335	100.0	8,138	100.0	6,527	100.0	5,823	100.0	5,371	100.0
	Working age (18-67 year)	4,088	68.3	3,614	67.7	4,811	59.1	3,775	58.3	3,299	56.7	3,046	56.7
<b>Sex</b>	Men	2,630	44.0	2,322	43.5	3,527	43.3	2,844	43.6	2,546	43.7	2,339	43.5
	Women	3,351	56.0	3,013	56.5	4,611	56.7	3,683	56.4	3,277	56.3	3,032	56.5
<b>Age (median years (IQR))</b>		51 (31-65)		53 (34-66)		51 (29-69)		54 (33-70)		56 (36-71)		57 (38-72)	
<b>Ethnic background</b>	Dutch	5,290	88.4	4,727	88.6	7,182	88.3	5,799	88.9	5,150	88.4	4,760	88.6
	Western	453	7.6	397	7.4	669	8.2	523	8.0	492	8.5	443	8.3
	Non-Western	238	4.0	211	4.0	287	3.5	205	3.1	181	3.1	168	3.1
<b>Educational level (≥25y)</b>	High	2,365	47.9	2,149	47.2	3,148	48.7	2,598	48.4	2,343	47.7	2,180	48.4
	Middle/Low	2,574	52.1	2,379	52.5	3,320	51.3	2,766	51.6	2,564	52.3	2,468	51.6
<b>Region</b>	North	1,183	19.8	1,047	19.6	1,642	20.2	1,337	20.5	1,183	20.3	1,077	20.1
	Mid-West	1,063	17.8	952	17.8	1,475	18.1	1,159	17.8	1,068	18.3	991	18.4
	Mid-East	1,277	21.3	1,118	21.0	1,722	21.2	1,397	21.4	1,220	21.0	1,118	20.8
	South-West	1,094	18.3	984	18.4	1,502	18.5	1,199	18.4	1,078	18.5	987	18.4
	South-East	1,364	22.8	1,234	23.1	1,797	22.1	1,435	22.0	1,274	21.9	1,198	22.3
<b>Urbanization degree</b>	High (large cities)	1,144	19.1	1,026	19.2	1,598	19.6	1,263	19.3	1,114	19.1	1,022	19.0
	Middle (moderate cities)	1,892	31.6	1,674	31.4	2,550	31.3	2,029	31.1	1,814	31.2	1,681	31.3
	Low (villages to countryside)	2,945	49.2	2,635	49.4	3,990	49.0	3,235	49.6	2,895	49.7	2,668	49.7
<b>Comorbidities</b>	Yes	1,872	32.0	1,730	33.8	2,731	34.7	2,730	42.1	2,550	44.2	2,393	44.9
	No	3,970	68.0	3,390	66.2	5,131	65.3	3,750	57.9	3,215	55.8	2,931	55.1
<b>COVID-19 vaccination (among ≥18y)</b>	Yes (≥1 dose)	266	5.2	3,945	83.9	6,602	96.5	5,418	97.4	4,876	97.5	4,627	97.4
	No	4,870	94.8	755	16.1	240	3.5	147	2.6	126	2.5	123	2.6
<b>Nr. COVID-19 vaccine doses</b>	1	142	2.8	1,645	35.0	651	9.5	83	1.5	59	1.2	57	1.2
	2	124	2.4	2,298	48.9	5,850	85.6	786	14.1	596	11.9	467	9.8

	3	NA	NA	NA	NA	93	1.4	3,944	70.9	2,790	55.8	1,428	30.1
	4	NA	NA	NA	NA	NA	NA	604	10.8	1,403	28.0	1,297	27.3
	5	NA	NA	NA	NA	NA	NA	1	<0.1	29	0.6	1,346	28.3
	6	NA	NA	NA	NA	NA	NA	NA	NA	NA	NA	30	0.6
<b>LVC sample</b>		<i>n</i>	%	<i>n</i>	%	<i>n</i>	%	<i>n</i>	%	<i>n</i>	%	<i>n</i>	%
<b>Sex</b>	All ages	470	100.0	432	100.0	411	100.0	322	100.0	303	100.0	275	100.0
	Men	187	39.8	169	39.2	167	40.6	137	42.5	127	41.9	118	42.9
	Women	283	60.2	263	60.9	244	59.4	185	57.5	176	58.1	157	57.1
<b>Age (median years (IQR))</b>		44 (28-58)		46 (30-59)		47 (32-60)		50 (36-63)		51 (37-64)		52 (38-65)	
<b>COVID-19 vaccination (among ≥18y)</b>	Yes (≥1 dose)	19	4.8	249	67.3	292	81.3	238	82.9	224	83.0	206	83.4
	No	379	95.2	121	32.7	67	18.7	49	17.1	46	17.0	41	16.6
<b>Nr. COVID-19 vaccine doses</b>	1	10	2.5	124	33.5	43	12.0	8	2.8	7	2.6	7	2.8
	2	9	2.3	125	33.8	248	69.1	60	20.9	53	19.6	44	17.8
	3	NA	NA	NA	NA	1	0.3	154	53.7	125	46.3	80	32.4
	4	NA	NA	NA	NA	NA	NA	16	5.6	39	14.5	38	15.4
	5	NA	NA	NA	NA	NA	NA	NA	NA	NA	NA	37	15.0
	6	NA	NA	NA	NA	NA	NA	NA	NA	NA	NA	NA	NA

Numbers (n) and proportion (%) were provided for participants in the current PIENTER Corona (PICO) study cohort belonging to the national sample and low vaccination coverage (LVC) sample, covering study rounds in 2021 (February (PICO4), June (PICO5) and November (PICO6)) and 2022 (March (PICO7), June (PICO8), November (PICO9)), by sociodemographic characteristics, and comorbidity- and vaccination status. Educational level (from 25 years of age, highest obtained or current) was classified as low (no education or primary education)/middle (secondary school or vocational training), or high (bachelor's degree, university). Regions consist of the following provinces: North=Groningen, Friesland, Drenthe and Overijssel; Mid-West=Flevoland and Noord-Holland; Mid-East=Gelderland and Utrecht; South-West=Zuid-Holland and Zeeland; South-East=Noord-Brabant and Limburg. Those who had received a flu vaccination were classified as having underlying comorbidities, consistent with national regulation. NA=not applicable.

It is made available under a [CC-BY-NC-ND 4.0 International license](https://creativecommons.org/licenses/by-nc-nd/4.0/).

### A. Study timeline



### B. Nationwide distribution of participants



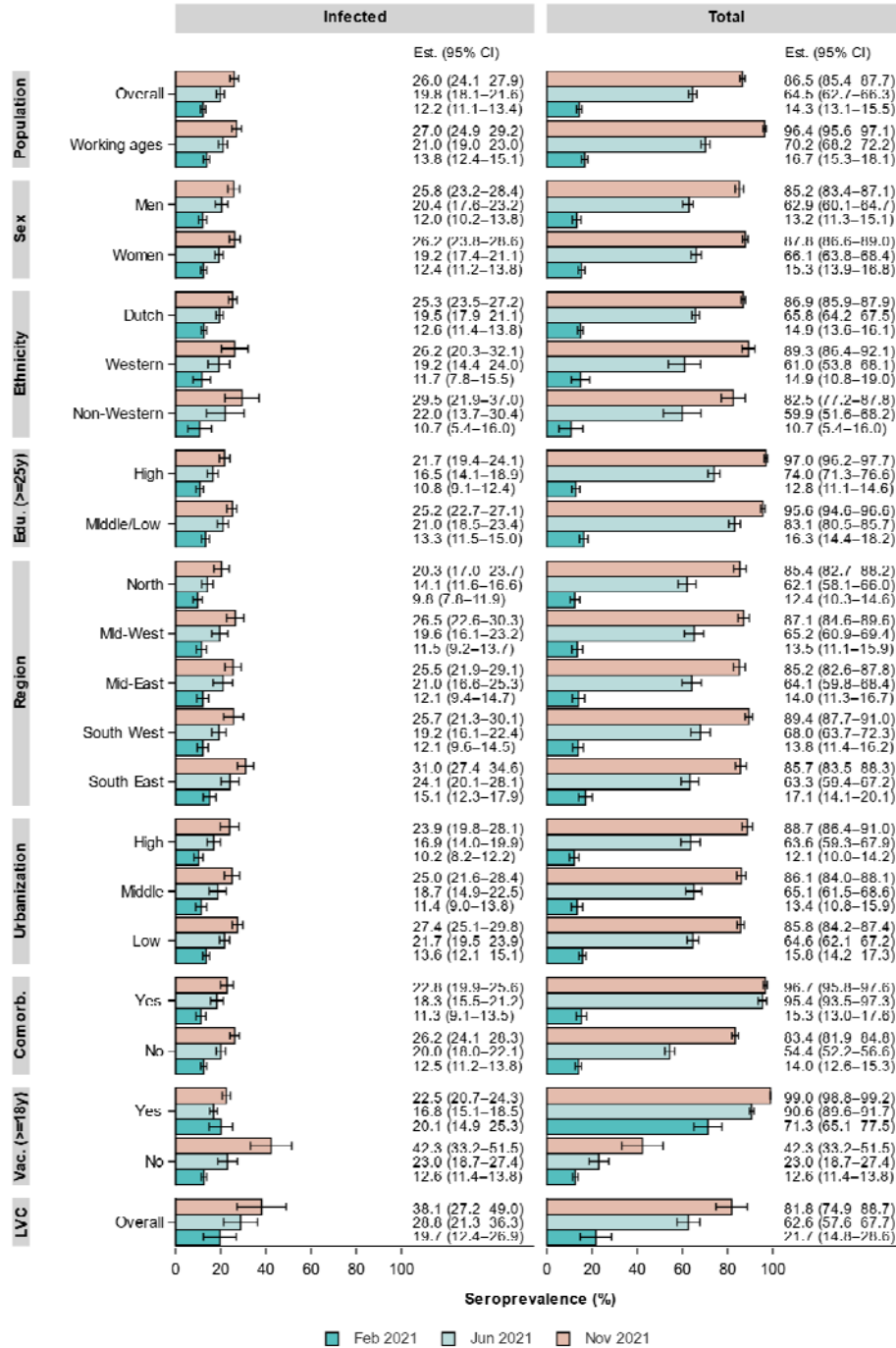
**Figure 1. A.** The PIENTER Corona (PICO) study timeline in 2021 and 2022, by daily occupied hospital beds due to COVID-19 (black line, left y-axis), daily stringency index (grey line, right y-axis) and dominance of specific Variants of Concern (VOC) in the Netherlands (on x-axis, from left to right: Alpha, Delta, Omicron-BA.1, -BA.2, -BA.5, and -BQ.1). A nationwide vaccination campaign started in the beginning of January 2021 and followed an age-, comorbidity- and healthcare worker-based prioritization. The number of participants analyzed in the current study are provided per study round and depicted in italic in the colored boxes. Length of the study rounds are consistent with the width of the colored boxes, although the majority of participants participated at the beginning of each study round, also reflected by the median and interquartile ranges (IQR): PICO4: 17 (15-19) February 2021; PICO5: 23 (21-28) June 2021; PICO6: 11 (8-15) November 2021; PICO7: 23 (19-28) March 2022; PICO8: 21 (19-27) June 2022; and PICO9: 9 (5-14) November 2022. Data on hospital bed occupation are open source and were downloaded from the National Coordination Center for Patient Distribution (LCPS) (via: <https://lcps.nu/datafeed>). Stringency index data, here depicted for the Netherlands, are open source too and were downloaded from Our World in Data (via: <https://ourworldindata.org/covid-stringency-index>).

**B. Nationwide distribution of the total number of unique PICO participants analyzed (n=9,985), by municipality.** The current study comprises the national sample (n=9,492) and the low vaccination coverage (LVC) sample (n=493). The number (proportional to the size of the green dots) and distribution of participants match the countrywide population size and -distribution. Pink-circled municipalities represent the LVC municipalities (as per the PIENTER-3 cohort). Thicker grey lines represent the borders of the provinces and the thin grey lines those of the municipalities.



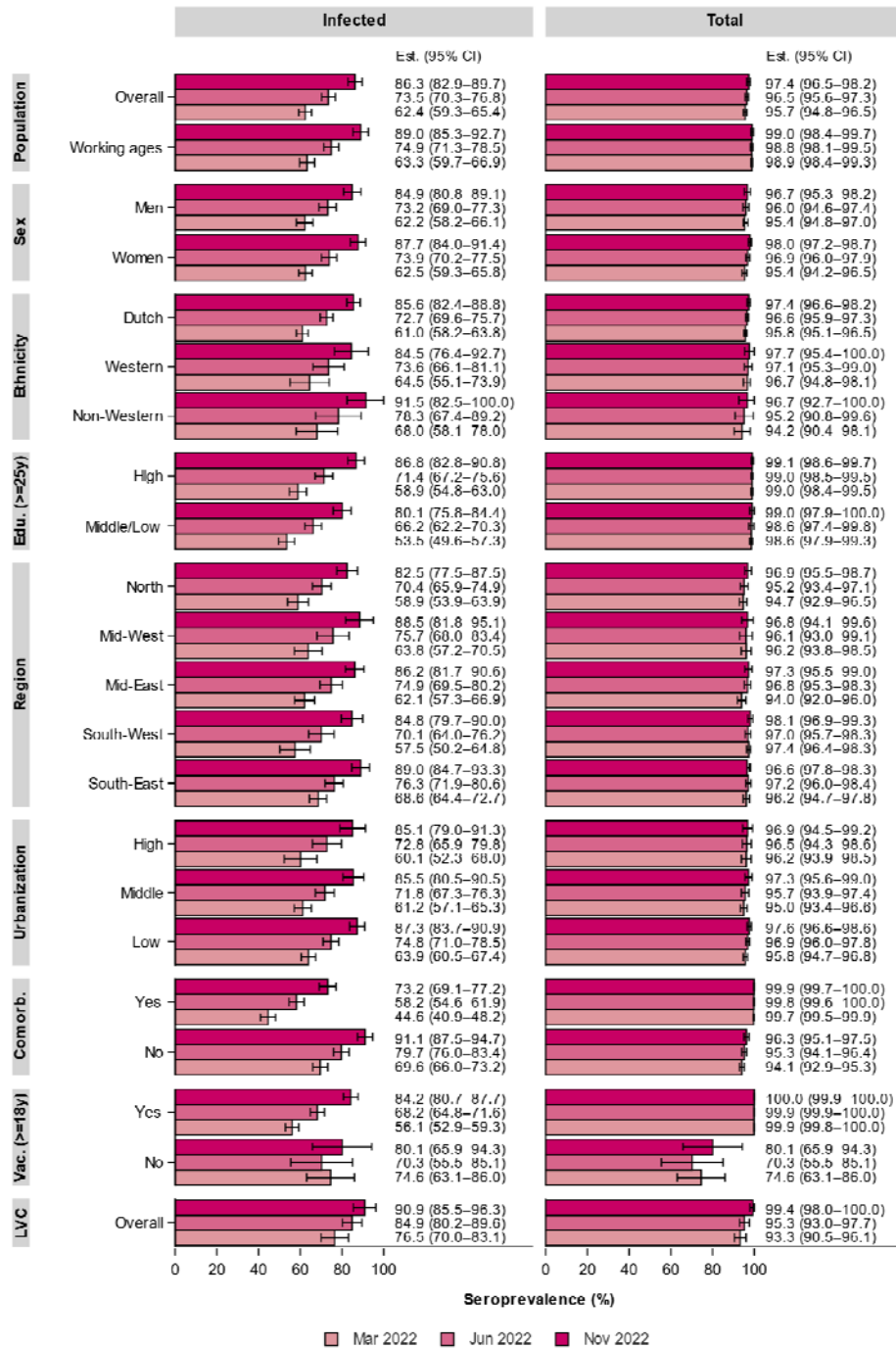
It is made available under a [CC-BY-NC-ND 4.0 International license](https://creativecommons.org/licenses/by-nc-nd/4.0/).

A. 2021



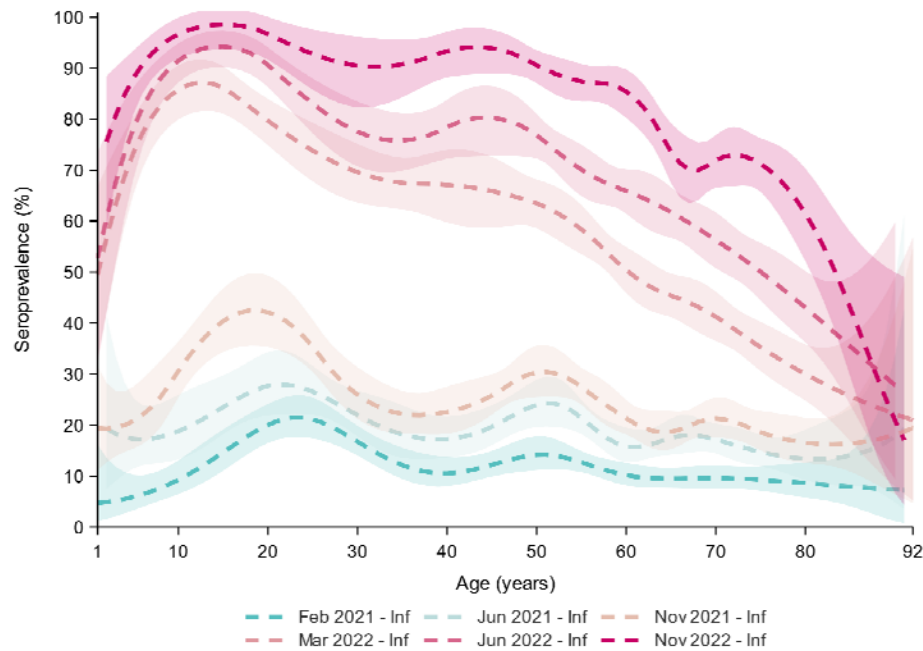
It is made available under a [CC-BY-NC-ND 4.0 International license](https://creativecommons.org/licenses/by-nc-nd/4.0/).

**B. 2022**

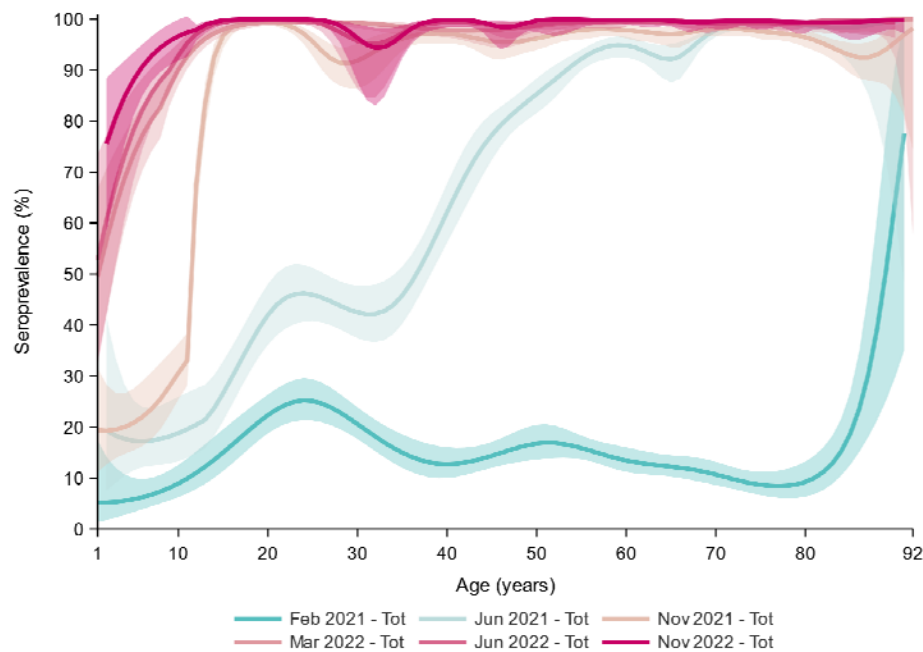


**Figure 2. Weighted SARS-CoV-2 seroprevalence (with 95% confidence intervals (CI)) induced by infection (left panel) and total (i.e., infection and vaccination, right panel) in the general Dutch population in 2021 (February (PICO4), June (PICO5) and November (PICO6)) (A) and 2022 (March (PICO7), June (PICO8), November (PICO9)) (B), by sociodemographic characteristics, comorbidity, and vaccination (>=18 years) status. Regions consist of the following provinces: North=Groningen, Friesland, Drenthe and Overijssel; Mid-West=Flevoland and Noord-Holland; Mid-East=Gelderland and Utrecht; South-West=Zuid-Holland and Zeeland; South-East=Noord-Brabant and Limburg. Comorb.=having comorbidities, i.e., classification based on having received the annual flu vaccination, consistent with national regulation; Edu.=educational level (from 25 years of age, highest obtained or current), classified as low (no education or primary education)/middle (secondary school or vocational training), or high (bachelor's degree, university); Est. (95% CI)=seroprevalence estimate with 95% confidence intervals; LVC=low vaccination coverage sample, as conceived in the PIENTER-3 cohort; Population=general Dutch population, stratified by all ages (overall) and working ages (18 to 67 years); Vac.=had a COVID-19 vaccination at least once (from 18 years of age).**

**A. Infected**

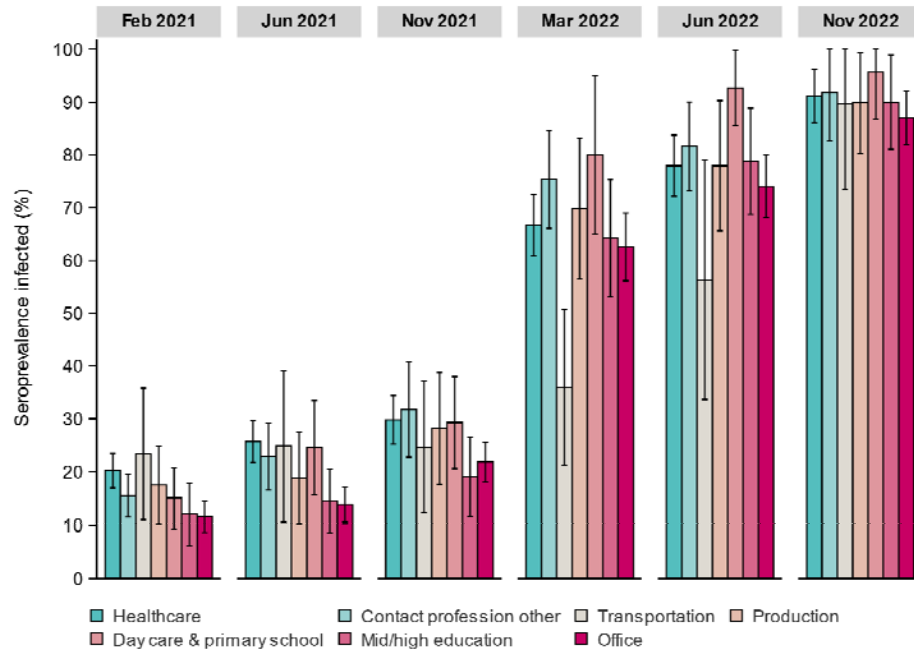


**B. Total**

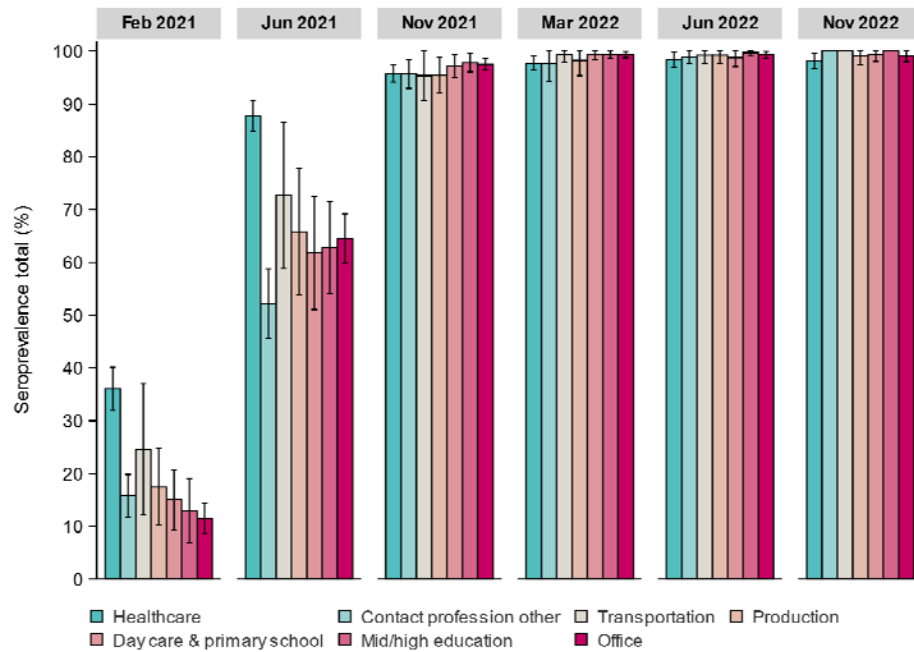


**Figure 3. Weighted SARS-CoV-2 seroprevalence (with 95% confidence bands) induced by infection (A) and total (i.e., infection and vaccination) (B) in the general Dutch population in 2021 (February (PICO4), June (PICO5) and November (PICO6)) and 2022 (March (PICO7), June (PICO8), November (PICO9)), by age. Seroprevalence was modeled with B splines, with number of percentile-placed knots optimized following Akaike's information criterion (AIC).**

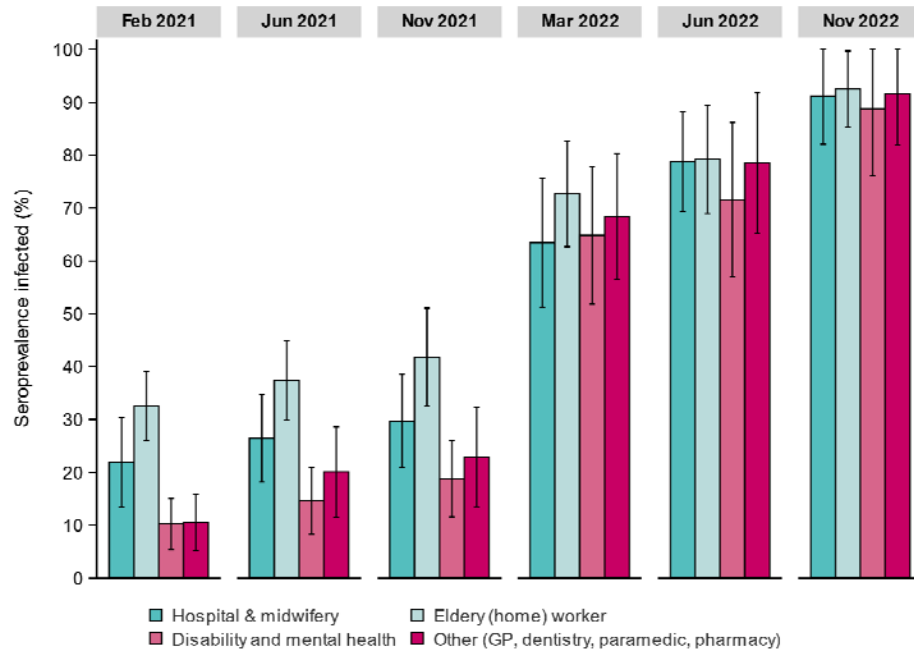
### A. Infected



### B. Total



C. Infected



D. Total

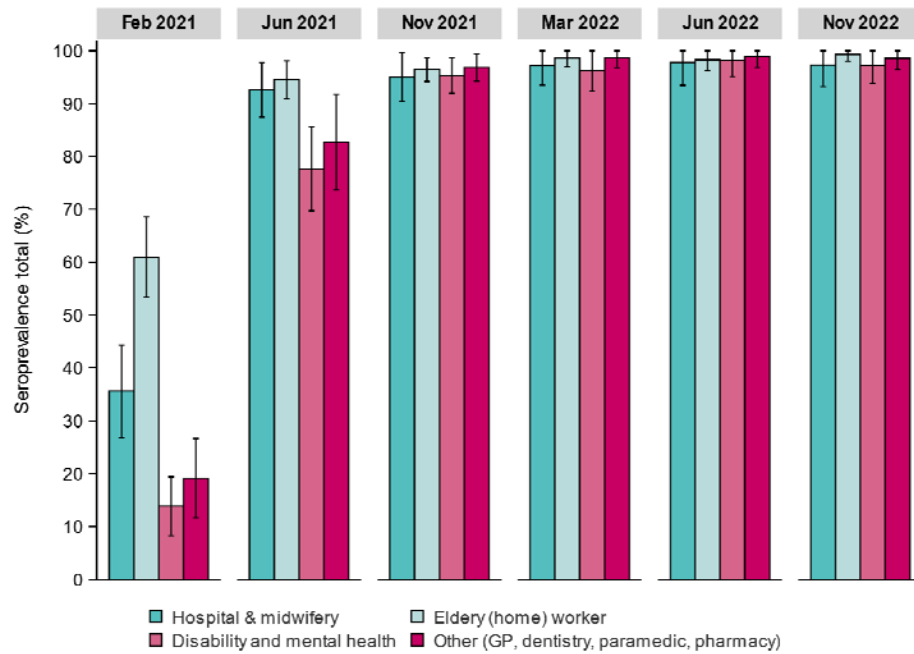


Figure 4. Weighted SARS-CoV-2 seroprevalence (with 95% confidence intervals) induced by infection (A, C) and total (i.e., infection and vaccination) (B, C) in the general Dutch population in 2021 (February (PICO4), June (PICO5) and November (PICO6)) and 2022 (March (PICO7), June (PICO8), November (PICO9)), by age categories (years) and occupational sector (A, B) and healthcare sector (C, D). Contact professions consisted of sectors outside healthcare, such as bars, hotels, restaurants, stores (retail and supermarket), barbers, tattooing, masseuse, cosmetologist, etc. The median age in years (IQR) per occupational sector (in PICO6, as reference) was: Healthcare: 48 (35-57); Contact profession: 43 (22-55); Transportation: 55 (37-60); Production: 49 (37-58); Day care & primary school: 45 (35-56); Middle & higher education: 49 (33-60); and Office: 47 (36-55).

It is made available under a [CC-BY-NC-ND 4.0 International license](https://creativecommons.org/licenses/by-nc-nd/4.0/).

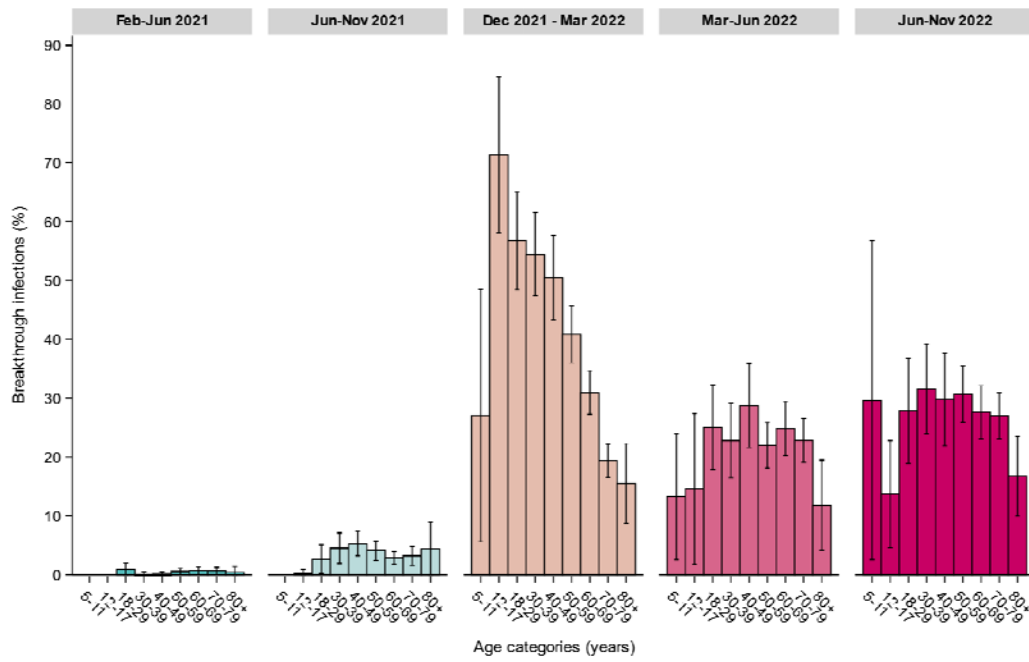


Figure 5. Weighted SARS-CoV-2 breakthrough infections (with 95% confidence intervals) in the general vaccinated Dutch population in 2021 (between February (PICO4), June (PICO5) and November (PICO6)) and 2022 (between March (PICO7), June (PICO8), November (PICO9)), by age categories (years).

## Nationwide SARS-CoV-2 Seroprevalence Trends in the Netherlands in the Variant of Concern Era, 2021-2022: an Ongoing Prospective Cohort Study

Eric R.A. Vos, Cheyenne C.E. van Hagen, Denise Wong, Gaby Smits, Marjan Kuijer, Alienke J. Wijmenga-Monsuur, Joanna Kaczorowska, Robert S. van Binnendijk, Fiona R.M. van der Klis, Gerco den Hartog, Hester E. de Melker

### **Supplementary material**

### Supplementary information: additional sampling of the national sample, November 2021 (PICO6)

Details on previous sampling up to round 2 of the PICO-study and sample size calculation have been described in Vos *et al.* (2021, JECH) and Vos *et al.* (2021, CID). Due to drop outs in study rounds after PICO2 - particularly notable in younger age groups - and hence to maintain power for subsequent rounds, the Dutch cohort was supplemented with an additional sample of randomly-selected persons from the Dutch population registry (as of October 1<sup>st</sup>, 2021) prior to the start of the 6<sup>th</sup> study round (November 2021). Congruent with the previous study designs, invitees were randomly drawn from five large regions with roughly the same population size (consisting of provinces: North=Groningen, Friesland, Drenthe and Overijssel; Mid-West=Flevoland and Noord-Holland; Mid-East=Gelderland and Utrecht; South-West=Zuid-Holland and Zeeland; and South-East=Noord-Brabant and Limburg), and from 17 pre-defined age groups (1-4, 5-9, 10-14, 15-19, 20-24, 25-29, 30-34, 35-39, 40-44, 45-49, 50-54, 55-59, 60-64, 65-69, 70-74, 75-79, 80-89 years). A minimum of 400 participants per age stratum was anticipated, taking into account initial response rates as well as drop-out rates per age stratum during the study. Taken together, for the additional sample we randomly selected 66,020 persons, of which 65,690 remained eligible for invitation after initial screening, and of these 3,181 participated. The national sample is further described per study round (4 to 9) in 2021 and 2021 and other relevant characteristics in Table 1 of the main article. Supplementary Table S1 below provides an overview of responders vs. non-responders from the additional sampling, stratified by available sociodemographic variables.

**Supplementary Table S1.** Overview of responders vs. non-responders from the additional sampling in November 2021 (PICO6).

		Non-responder		Responder		Total invited additional sample
		n=62,509 (95.2%)		n=3,181 (4.8%)		n=65,690
		n	%	n	%	n
<b>Sex</b>	Man	30,967	49.5	1,364	42.9	32,331
	Women	31,542	50.5	1,817	57.1	33,359
<b>Age categories (years)</b>	1-4	18,948	30.3	194	6.1	19,142
	5-9	7,802	12.5	262	8.2	8,064
	10-14	4,275	6.8	218	6.9	4,493
	15-19	3,228	5.2	132	4.1	3,360
	20-24	4,961	7.9	211	6.6	5,172
	25-29	3,557	5.7	184	5.8	3,741
	30-34	1,560	2.5	120	3.8	1,680
	35-39	2,392	3.8	226	7.1	2,618
	40-44	1,107	1.8	136	4.3	1,243
	45-49	1,405	2.3	164	5.2	1,569
	50-54	769	1.2	122	3.8	891
	55-59	502	0.8	98	3.1	600
	60-64	454	0.7	90	2.8	544
	65-69	201	0.3	53	1.7	254
	70-74	870	1.4	186	5.8	1,056
	75-79	2,492	4.0	377	11.9	2,869
	80-84	2,481	4.0	201	6.3	2,682
85+	5,505	8.8	207	6.5	5,712	
<b>Region</b>	North	12,492	20.0	655	20.6	13,147
	Mid-West	12,527	20.0	599	18.8	13,126

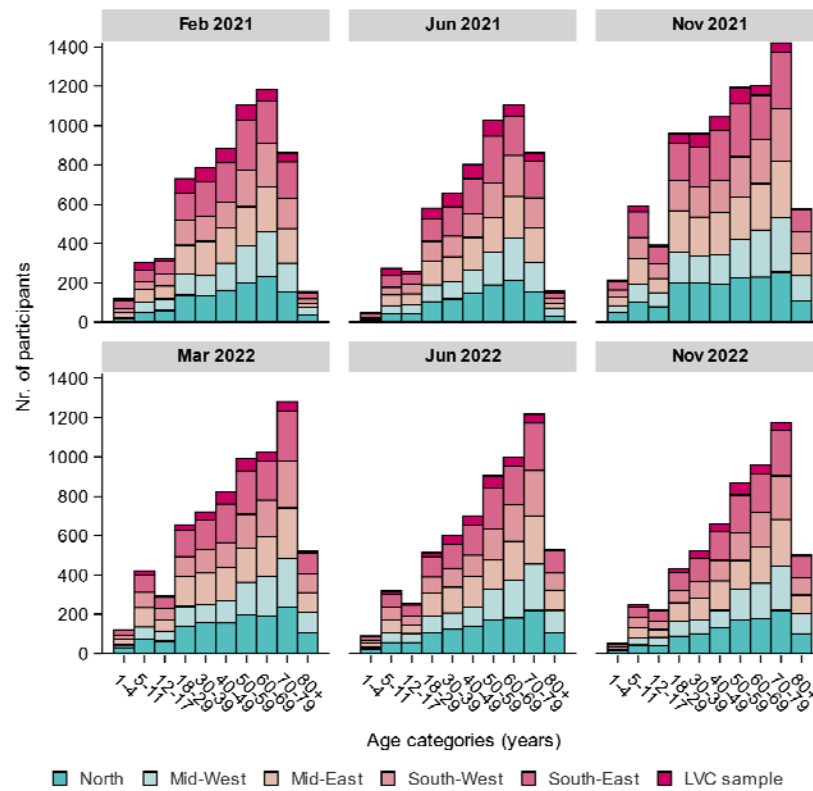


It is made available under a [CC-BY-NC-ND 4.0 International license](https://creativecommons.org/licenses/by-nc-nd/4.0/) .

	Mid-East	12,466	19.9	667	21.0	13,133
	South-West	12,537	20.1	600	18.9	13,137
	South-East	12,485	20.0	660	20.7	13,145
<b>Urbanization degree</b>	High (large cities)	15,536	24.9	672	21.1	16,208
	Middle (moderate cities)	19,099	30.5	991	31.2	20,090
	Low (villages to countryside)	27,872	44.6	1,518	47.7	29,390
<b>Country of birth</b>	Dutch	56,692	90.7	3,001	94.3	59,693
	Non-Dutch	5,817	9.3	180	5.7	5,997

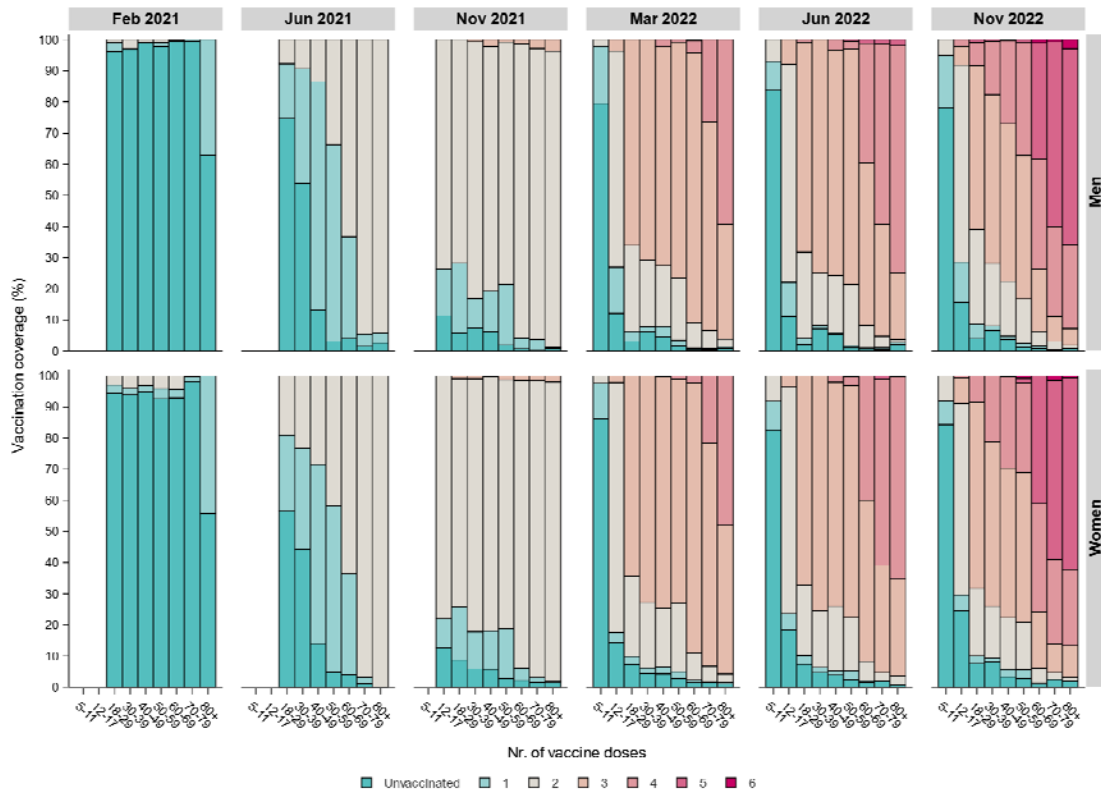
Ethnic background was not available for non-responders, instead country of birth was used for comparison with responders. Missing: n=2 for region and urbanization degree in non-responders. Regions consist of the following provinces: North=Groningen, Friesland, Drenthe and Overijssel; Mid-West=Flevoland and Noord-Holland; Mid-East=Gelderland and Utrecht; South-West=Zuid-Holland and Zeeland; and South-East=Noord-Brabant and Limburg.

It is made available under a [CC-BY-NC-ND 4.0 International license](https://creativecommons.org/licenses/by-nc-nd/4.0/).



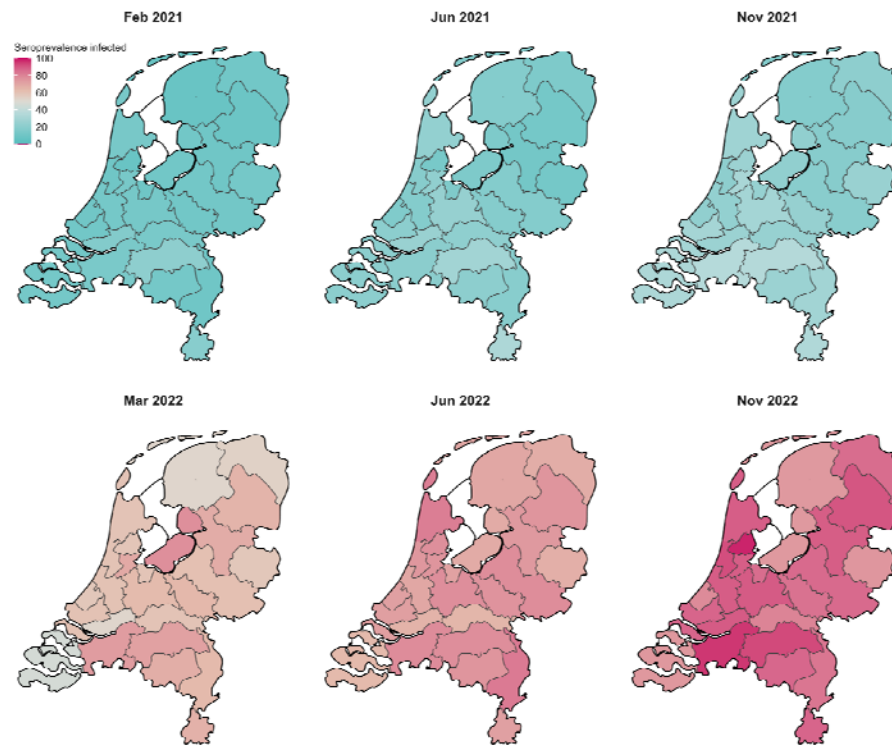
**Supplementary Figure S1.** Number of participants in the current PIENTER Corona (PICO) study belonging to the national sample and low vaccination coverage (LVC) sample (as conceived in the PIENTER-3 cohort) in 2021 (February (PICO4), June (PICO5) and November (PICO6)) and 2022 (March (PICO7), June (PICO8), November (PICO9)), by age categories (years) and region. Regions consist of the following provinces: North=Groningen, Friesland, Drenthe and Overijssel; Mid-West=Flevoland and Noord-Holland; Mid-East=Gelderland and Utrecht; South-West=Zuid-Holland and Zeeland; and South-East=Noord-Brabant and Limburg.

It is made available under a [CC-BY-NC-ND 4.0 International license](https://creativecommons.org/licenses/by-nc-nd/4.0/) .

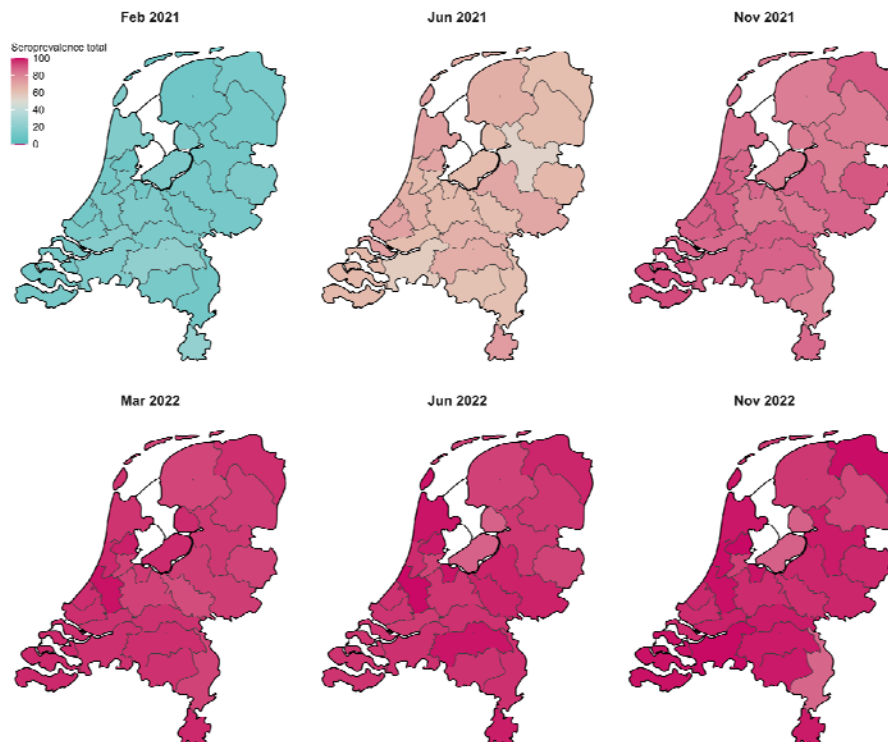


Supplementary Figure S2. Weighted vaccination coverage (%) in the general Dutch population (as derived from the national sample of the current PIENTER Corona (PICO) study cohort) in 2021 (February (PICO4), June (PICO5) and November (PICO6)) and 2022 (March (PICO7), June (PICO8), November (PICO9)), by sex, age categories (years) and number of vaccine doses. The vaccination campaign roll-out followed an age-, comorbidity-, and healthcare worker-based prioritization that started in the beginning of 2021.

### A. Infected



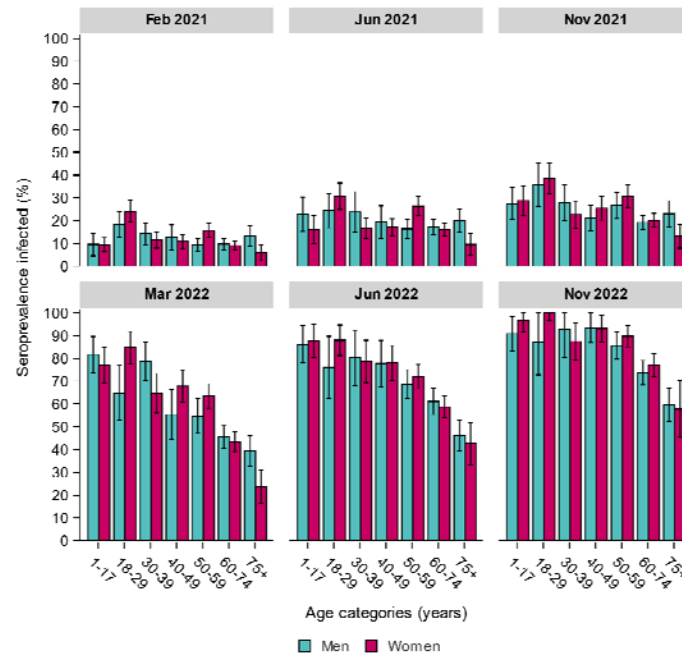
### B. Total



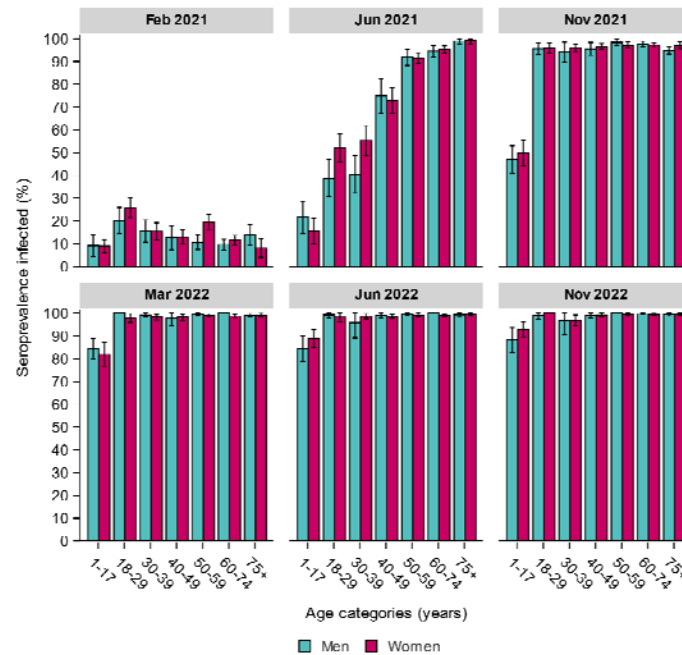
Supplementary Figure S3. Weighted SARS-CoV-2 seroprevalence induced by infection (A) and total (i.e., infection and vaccination) (B) in the general Dutch population in 2021 (February (PICO4), June (PICO5) and November (PICO6)) and 2022 (March (PICO7), June (PICO8), November (PICO9)), by Municipality Health Service (GGD) region.

It is made available under a [CC-BY-NC-ND 4.0 International license](https://creativecommons.org/licenses/by-nc-nd/4.0/).

### A. Infected



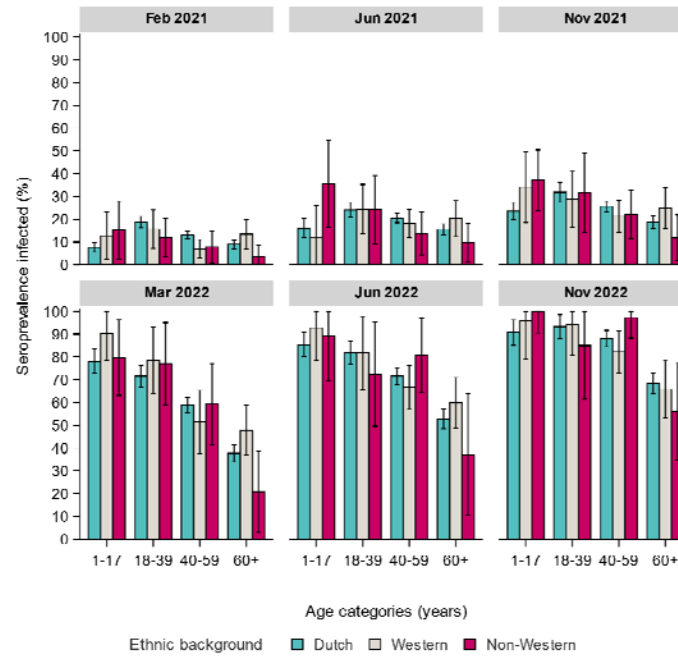
### B. Total



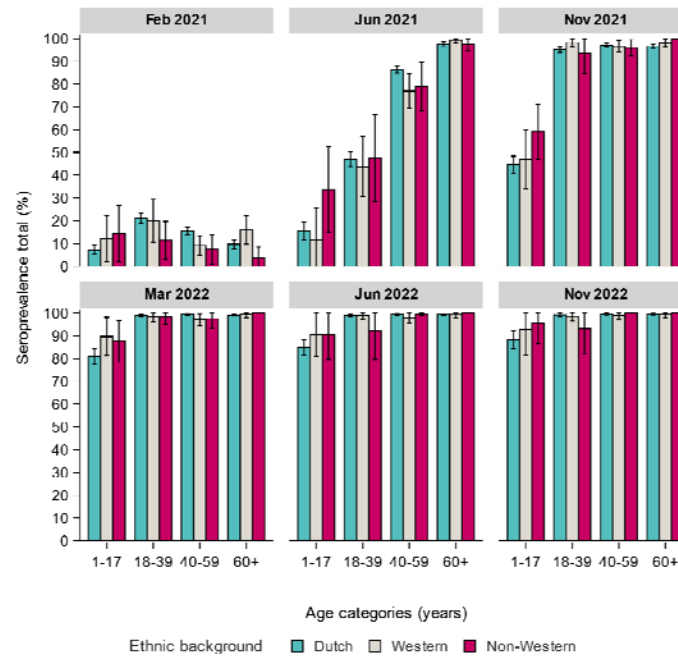
Supplementary Figure S4. Weighted SARS-CoV-2 seroprevalence (with 95% confidence intervals) induced by infection (A) and total (i.e., infection and vaccination) (B) in the general Dutch population in 2021 (February (PICO4), June (PICO5) and November (PICO6)) and 2022 (March (PICO7), June (PICO8), November (PICO9)), by age categories (years) and sex.

It is made available under a [CC-BY-NC-ND 4.0 International license](https://creativecommons.org/licenses/by-nc-nd/4.0/).

### A. Infected



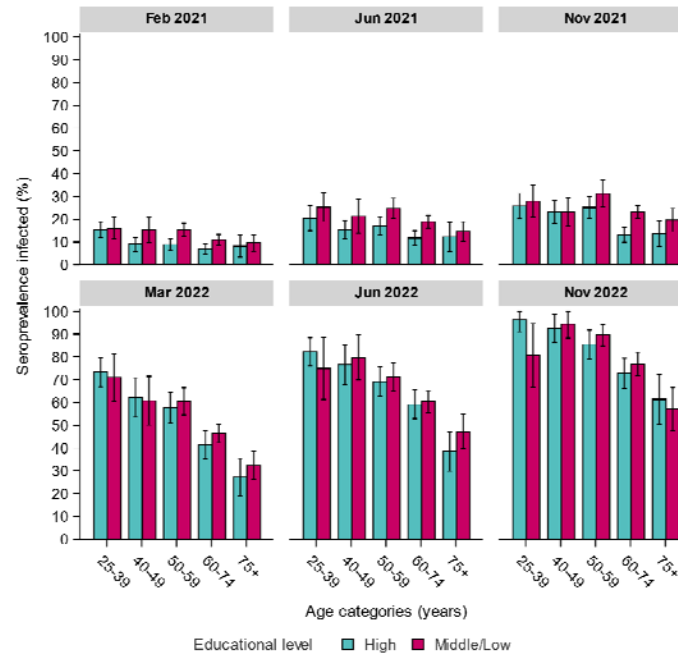
### B. Total



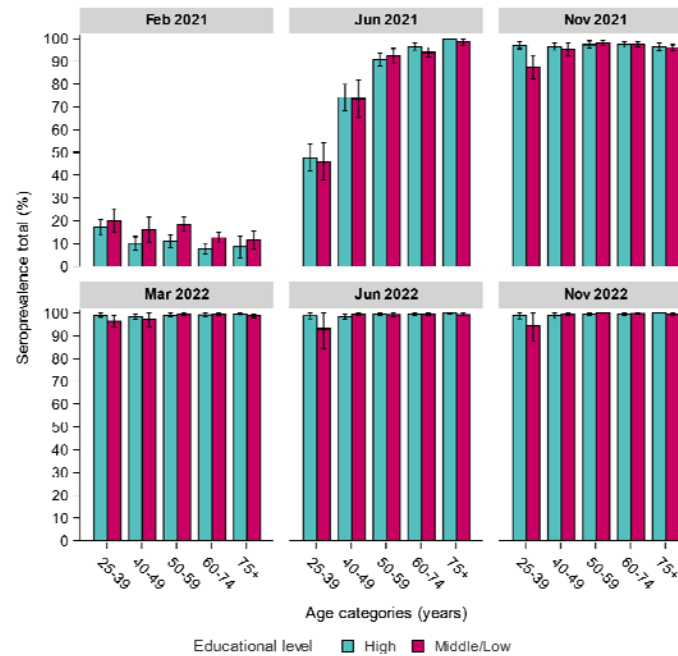
Supplementary Figure S5. Weighted SARS-CoV-2 seroprevalence (with 95% confidence intervals) induced by infection (A) and total (i.e., infection and vaccination) (B) in the general Dutch population in 2021 (February (PICO4), June (PICO5) and November (PICO6)) and 2022 (March (PICO7), June (PICO8), November (PICO9)), by age categories (years) and ethnic background.

It is made available under a [CC-BY-NC-ND 4.0 International license](https://creativecommons.org/licenses/by-nc-nd/4.0/).

**A. Infected**



**B. Total**



**Supplementary Figure S6. Weighted SARS-CoV-2 seroprevalence (with 95% confidence intervals) induced by infection (A) and total (i.e., infection and vaccination) (B) in the general Dutch population in 2021 (February (PICO4), June (PICO5) and November (PICO6)) and 2022 (March (PICO7), June (PICO8), November (PICO9)), by age categories (years) and educational level ((from 25 years of age, highest obtained or current). Educational level was classified as low (no education or primary education)/middle (secondary school or vocational training), or high (bachelor's degree, university)).**