

# 1 Prevalence of Coronary Atherosclerosis in Master Female Endurance Athletes

2 Efstathios Papatheodorou<sup>1</sup>, Vincent L. Aengevaeren<sup>2</sup>, Thijs M.H. Eijvogels<sup>2</sup>, Khaled Al  
3 Fakih<sup>3</sup>, Rebecca Kathryn Hughes<sup>4</sup>, Ahmed Merghani<sup>1</sup>, Christine K. Kissel<sup>1</sup>, Saad Fyyaz<sup>1</sup>,  
4 Athanasios Bakalakos<sup>1</sup>, Mathew G. Wilson<sup>5,6</sup>, Damini Dey<sup>7</sup>, Gherardo Finocchiaro<sup>1</sup>,  
5 Gemma Parry-Williams<sup>1</sup>, Camilla Torlasco<sup>4</sup>, Michael Papadakis<sup>1</sup>, James C. Moon<sup>4</sup>,  
6 Sanjay Sharma<sup>1</sup>.

7

- 8 1. Cardiology Clinical and Academic Group. St Georges, University of London,  
9 and St George's University Hospital NHS Foundation Trust (UK)
- 10 2. Department of Medical Biosciences, Exercise Physiology Research Group.  
11 Radboud University Medical Centre. Nijmegen, the Netherlands
- 12 3. University Hospital Lewisham, London (UK)
- 13 4. The Barts Heart Centre, University College London (UK)
- 14 5. Institute of Sport and Exercise Health (ISEH), University College London,  
15 London, UK
- 16 6. HCA Healthcare Research Institute, London, UK
- 17 7. Cedars-Sinai Medical Centre, Biomedical Imaging Research Institute, Los  
18 Angeles, CA (USA)

19

20

## 21 Address for correspondence:

22 Sanjay Sharma

23 Professor of Cardiology

24 Cardiology clinical and academic group

25 St George's, University of London, and St George's University Hospital NHS

26 Foundation Trust.

27 Cranmer Terrace, London SW17 0RE, UK

28 NOTE: This preprint reports new research that has not been certified by peer review and should not be used to guide clinical practice.

29 **ABSTRACT**

30 **BACKGROUND:**

31 Studies in ostensibly healthy male master athletes have revealed a greater  
32 prevalence of coronary artery calcification (CAC) and coronary plaques compared  
33 with relatively sedentary counterparts. In contrast, data relating to potentially  
34 adverse coronary remodelling in female master athletes is sparse and conflicting. We  
35 investigated the prevalence of coronary atherosclerosis in a cohort of predominantly  
36 post-menopausal female master athletes with a low atherosclerotic risk profile.

37

38 **METHODS:**

39 196 female athletes with a mean age of 55±7 years-old and median exercise duration  
40 of 33 years (25-39) and 59 relatively sedentary females of similar age underwent  
41 cardiovascular investigations including a coronary computed tomogram angiography  
42 with assessment of CAC scores, coronary plaques, and pericoronary adipose tissue  
43 attenuation. 70% of the athletes and 68% of the control group were post-  
44 menopausal.

45

46 **RESULTS:**

47 Athletes and controls had a similarly low Framingham 10-year risk (1.49% versus  
48 2.1%; P=0.68), but body mass index and blood pressure were lower and HDL-C was  
49 higher in the athletes. The prevalence of CAC score >0 Agatston units (AU) was low  
50 and did not differ between athletes and controls (21% versus 32%;P=0.073). Female

51 athletes had a lower prevalence of a CAC score >50<sup>th</sup> centile (19% *versus*  
52 32%;P<0.03) and >75<sup>th</sup> centile (14% *versus* 25%;P=0.045) for age compared with  
53 controls, but the prevalence of a CAC score >100 AU did not differ between the  
54 groups (3.6% *versus* 8.5%;P=0.12). There were also no differences between the  
55 groups in the prevalence of individuals with coronary plaques (21% *versus*  
56 32%;P=0.09), total plaque volume (16 mm<sup>3</sup> [IQR 3-56] *versus* 49 [5-142]  
57 mm<sup>3</sup>;P=0.08), or plaque burden (10.8% [2.8-21] *versus* 15.4% [4.6-28];P=0.46).  
58 Coronary plaques were predominantly calcified in both athletes and controls (80%  
59 *versus* 63%;P=0.08). Age, blood pressure and HDL-C were independent predictors for  
60 a CAC score >0 AU among athletes.

61

## 62 **CONCLUSIONS:**

63 In contrast with previous studies in male master athletes, lifelong exercise in female  
64 counterparts does not appear to be associated with increased CAC score, coronary  
65 plaque burden or any qualitative differences in coronary plaque compared with  
66 relatively sedentary healthy counterparts. Coronary atherosclerosis in master female  
67 athletes is mainly driven by traditional risk factors.

68 **Word count 343**

## 69 Introduction

70 The benefits of exercise for curbing risk factors for atherosclerosis and reducing  
71 overall cardiovascular morbidity and mortality are widely recognized<sup>1,2</sup>, however,  
72 several studies have shown an increased burden of coronary atherosclerosis in male  
73 master athletes<sup>3-6</sup>. Whereas original studies reported increased coronary artery  
74 calcification (CAC) in male marathon runners with a relatively high prevalence of  
75 atherosclerotic risk factors<sup>4</sup>, recent studies have shown similar findings in male  
76 master athletes with a low atherosclerotic risk profile<sup>3,5,6</sup>. Increasing age, traditional  
77 risk factors and volume of exercise are major determinants of high CAC scores in  
78 males although coronary inflammation, dietary factors, blood pressure responses to  
79 exercise and serum parathyroid hormone concentrations have also been  
80 postulated<sup>7-9</sup>. Over the past couple of decades, there has been an explosive surge in  
81 the number of middle-aged and older women participating and excelling in mass  
82 endurance sporting events and competitive races, however there are few studies  
83 examining the effect of lifelong exercise on the coronary vasculature in women.  
84 Existing reports are conflicting<sup>6,10-12</sup> and limited by the small number of participants,  
85 variation in the prevalence of atherosclerotic risk factors between the comparison  
86 groups and inclusion of mainly premenopausal or perimenopausal women who may  
87 be protected by the anti-atherogenic effects of estrogen.

88 We investigated the prevalence, magnitude and determinants of CAC score and  
89 coronary plaque in predominantly post-menopausal female master athletes with a  
90 low atherosclerotic risk profile.

91

## 92    **METHODS**

### 93    **Subjects:**

94    Female master athletes were defined as athletes aged  $\geq 40$  years-old who had  
95    exercised systematically and continuously for  $\geq 10$  years and had competed in  $\geq 10$   
96    endurance events. Athletes were recruited by contacting governing sporting bodies  
97    for master athletes including the British Master Athletics Federation, British Master  
98    Swimming Association, Master Rowing, British triathlon and several endurance  
99    sports clubs in London, United Kingdom. Healthy controls were recruited through  
100    advertisements in 3 London National Heart Service Trusts and advertisements in  
101    community centers. Controls were of similar age and allowed to engage in up to 3  
102    hours of moderate intensity physical activity and recreational exercise per week.  
103    Athletes or controls with a history of coronary artery disease (CAD), hypertension,  
104    diabetes mellitus, a Framingham 10-year risk score  $>10\%$ , a family history of  
105    premature CAD ( $<65$  years in female relatives or  $<55$  years in male relatives), current  
106    or previous history of smoking, and contraindications to coronary computed  
107    tomography angiography (CCTA), or cardiovascular magnetic resonance (CMR) were  
108    excluded. Between 02/2017 and 09/2018 196 athletes and 59 sedentary controls  
109    underwent a battery of investigations including a health questionnaire, blood tests,  
110    ECG, echocardiogram, cardiopulmonary exercise test (CPET), coronary computed  
111    tomography angiogram (CCTA) and cardiovascular magnetic resonance (CMR) scan.  
112    Participants attended on 3 separate days to complete these investigations. The first  
113    attendance included a health questionnaire, blood tests and CPET. The second and

114 third attendances involved a CCTA and CMR respectively. The time span for  
115 completing all these investigations per participant was 4-6 weeks.

116

117 **Health questionnaire:**

118 Participants completed a baseline questionnaire (supplement 1) enquiring about  
119 demographics, cardiac symptoms, medical history, smoking history, family history of  
120 cardiac disease, menstrual history including age at menopause, if applicable, and  
121 exercise history. Menopause was considered if a woman had not menstruated for  
122  $\geq 12$  months.

123

124 **Exercise history and intensity:**

125 The exercise history focused on the duration and intensity of exercise, including total  
126 number of years of exercise, sports discipline(s), total number of competitions in  
127 sporting events, best times achieved in competitions, and major achievements. The  
128 intensity of exercise was assessed through the International Physical Activity  
129 Questionnaire (IPAQ) which is a widely used, standardized, and validated  
130 questionnaire<sup>13,14</sup> (supplement 2). The weekly dose of exercise was estimated by  
131 calculating the metabolic equivalent of task (MET) minutes per week from the  
132 information ascertained by the IPAQ.

133

134 **Blood investigations:**

135 Blood samples were analyzed for serum lipid profile, blood glucose and renal  
136 function. A separate blood sample was also taken 15 minutes after the completion of  
137 the cardiopulmonary exercise test for assessment of parathyroid hormone (PTH)  
138 concentrations, with values > 6.9 pmol/L to be considered as increased (laboratory  
139 reference range 1.1 – 6.9 pmol/L).

140

#### 141 **Cardiopulmonary exercise test:**

142 Cardio-pulmonary exercise testing was performed in an upright position using a  
143 COSMED E100w cycle ergometer (Rome, Italy) with an incremental ramp protocol of  
144 20-25 Watts/min for athletes and 10-15 Watts/min for healthy controls and  
145 simultaneous continuous ECG recording. Subjects were encouraged to exercise to  
146 the point of exhaustion. Breath-by-breath gas exchange analysis was performed  
147 using a dedicated COSMED Quark CPEX metabolic cart (Rome, Italy) and standard  
148 cardiometabolic indices were obtained according to published guidelines<sup>15</sup>. Blood  
149 pressure was manually obtained at rest and at 2-minute intervals during exercise.  
150 Exercise induced hypertension was defined as systolic blood pressure of  $\geq 190$ mmHg  
151 during exercise<sup>22,23</sup>.

152

#### 153 **Cardiac Investigations:**

154 **Coronary computed tomography angiography (CCTA).** CCTA was performed using a  
155 64 slice LightSpeed VCT XTe GE scanner (GE Healthcare) and prospective gating,  
156 using a commercially available protocol (SnapShot Pulse, GE healthcare) and the  
157 following scanning parameters: slice acquisition 64 x 0.625 mm, smallest X-ray

158 window, Z-coverage value of 20 mm with an increment of 20 mm, gantry rotation  
159 time of 350 ms. Some participants received intravenously Metoprolol (5-20mg) to  
160 achieve a heart rate  $\leq 60$  bpm. All volunteers received two 400 mcg doses of  
161 sublingual Glyceryl trinitrate. The coronary circulation was visualized by injecting 100  
162 ml of intravenous Ivoersol (Optiray 350 mg I/ml, Covidien UK, Hampshire, UK) at a  
163 flow rate of 5 ml/s followed by 100 ml of saline solution into an antecubital vein via  
164 an 18-gauge peripheral venous catheter. All images were transferred to an external  
165 workstation (Autoplaque, v2.18.08.23, Mount Sinai, USA) for analysis. Plaque  
166 quantification analysis was performed in 35 athletes and 10 controls. A semi-  
167 automated 3D quantification and characterization of segments with plaque on CCTA  
168 was used to define the plaque composition, total plaque volume and total plaque  
169 burden as validated previously<sup>16,17</sup>. Plaque prevalence was defined as the number of  
170 individuals with plaques. Plaque burden was defined as the respective plaque  
171 volume/vessel volume. Plaque morphology was sub-divided into calcified, mixed  
172 morphology or non-calcified plaque and plaque composition was defined as plaque  
173 morphology/total plaque volume. Pathological CAD was defined as the presence of  
174  $\geq 1$  of the following (a) CAC score  $>100$  Agatston Units (AU), (b) CAC score  $>75\%$  for  
175 age, or (c) vessel stenosis  $>50\%$ .

176

#### 177 **Pericoronary Adipose Tissue (PCAT):**

178 PCAT CT attenuation was used to assess coronary inflammation based on previously  
179 described and validated methodology<sup>18-20</sup>. PCAT was defined as the adipose tissue  
180 within a radial distance from the outer vessel wall equal to the diameter of the



181 vessel. Quantification was based on the attenuation histogram of perivascular fat  
182 within the range  $-190$  Hounsfield Units (HU) to  $-30$  HU. The proximal right coronary  
183 artery (RCA) was used for PCAT analysis. The proximal 10-50mm of the RCA were  
184 analyzed excluding the first 10mm. PCAT CT attenuation derived values were  
185 normalized for the kilovoltage peak (KVP) potential. The mean PCAT CT attenuation  
186 was determined in a 1 mm cylinder within a radial distance from the outer vessel  
187 wall equal to the average diameter of the right coronary artery ( $FAI_{RCA}$ ). FAI analysis  
188 was performed in 151 female athletes and 36 controls.

189

#### 190 **Cardiovascular Magnetic Resonance (CMR) Scan:**

191 Participants underwent CMR using a 1.5T magnet (Aera, Siemens Medical Solutions)  
192 as described previously<sup>6</sup>. Chamber volumes, myocardial mass, ventricular function,  
193 and aortic dimensions were assessed by cine steady-state free precession  
194 sequences<sup>21</sup>. Delayed contrast enhancement images were obtained 15 min after  
195 intravenous bolus injection of gadolinium-diethylene triamine pentaacetic acid (Gd-  
196 DTPA) (0.15 mmol/kg, Magnevist, Bayer Healthcare Pharmaceuticals, New Jersey,  
197 USA) to identify regional fibrosis. Inversion times were adjusted to null normal  
198 myocardium and late gadolinium enhancement (LGE) images were phase swapped  
199 to exclude artefacts.

200

#### 201 **Statistical Analysis.**

202 Data are expressed as n (%), mean  $\pm$  standard deviation (SD) for normally distributed  
203 continuous variables, or as median plus 25<sup>th</sup>-75<sup>th</sup> interquartile percentiles for

204 continuous variables that are not normally distributed. Statistical analyses were  
205 performed using Stata/IC version 15.1. Continuous variables were tested for  
206 normality using a Shapiro-Wilk test. Chi-squared and Fischer's exact tests were used  
207 for the comparison of categorical variables while unpaired t-tests and Mann-Whitney  
208 U tests were used for normally and non-normally distributed variables respectively.

209 Among master athletes, univariate logistic regression was performed to identify  
210 statistically significant variables associated with CAC score >0 and FAI. We decided *a*  
211 *priori* to include age, years of exercise, competitions completed, MET mins of  
212 exercise per week, menopausal status, resting systolic blood pressure (SBP), maximal  
213 SBP during exercise, total cholesterol, HDL cholesterol, parathyroid hormone (PTH)  
214 levels, left ventricular mass, and peak VO<sub>2</sub>. Coronary inflammation (FAI<sub>RCA</sub>) was  
215 subsequently added to the CAC score >0 model. A backward stepwise multivariable  
216 logistic regression model was constructed retaining all variables with associated with  
217 CAC score >0 or FAI<sub>RCA</sub> (P<0.10) in the univariable analyses. A P-value <0.05 was  
218 considered statistically significant.

219

## 220 **RESULTS**

### 221 **Demographics and atherosclerotic risk profile**

222 A total of 196 master athletes and 59 controls fulfilled criteria for participation.  
223 Athletes and controls were of similar age and had a similarly low mean Framingham  
224 risk and post-exercise PTH concentrations. There were no significant differences  
225 between athletes and controls with respect to the proportion of post-menopausal  
226 women. Controls were heavier than athletes, which translated to a modestly greater

227 body surface area. Controls also revealed higher systolic and diastolic blood pressure  
228 readings, whereas athletes had a slightly higher mean total and HDL cholesterol  
229 compared with controls. Athletes revealed higher peak oxygen consumption than  
230 controls and almost a quarter of the athletes showed an exaggerated blood pressure  
231 during exercise (SBP>190 mm Hg at peak exercise) compared with 10% of the control  
232 group (p<0.001) (**Table 1**).

233

#### 234 **Exercise history:**

235 Among athletes, endurance competitions included marathons (26.2miles; 42.2km),  
236 half marathons (13.1miles; 21.1km), 10km running races, endurance cycling races  
237 ranging from 41.1 miles to 161.5miles; 66 to 260km), triathlons, rowing regattas,  
238 marathons, or river races. Master athletes had been exercising for a median of 33  
239 years and trained for an average of 8 hours per week. Forty-five athletes were UK  
240 Master champions, 27 were European Master champions or finalists, 16 were World  
241 Master champions, and 2 were former Olympic medalists. Most athletes engaged in  
242 running (n=144, 73%), followed by cycling (n=91, 46%), swimming (n=82, 41%) and  
243 rowing (n=22, 11%).

244

#### 245 **Coronary calcium score:**

246 The prevalence of CAC score >0 was low and did not differ between athletes and  
247 controls (21% versus 32%; P=0.073) (**Table 2**). There were no significant differences  
248 between the groups with respect to the prevalence of CAC score >100. Female  
249 athletes showed a lower prevalence of CAC score >50% centile (19% versus 32%;

250 P=0.03) and CAC score >75% centile (14% versus 25%; P=0.045) compared with  
251 controls (**Figure 1**). Athletes were also less likely to exhibit pathological CAD (CAC  
252 score >100, or >75<sup>th</sup> percentile for age) compared with controls (15% versus 25%;  
253 P=0.045).

254

#### 255 **Coronary plaques and luminal irregularities:**

256 Both athletes and controls had a low prevalence of atherosclerotic plaques (21%  
257 versus 32%; P=0.09). Athletes and controls did not differ in the prevalence or  
258 distribution of the atherosclerotic plaques (**Figure 2, Table 2**). Coronary plaques  
259 were predominantly located in the proximal and mid portion of the left anterior  
260 descending athletes among athletes and non-athletes. None of the female athletes  
261 or controls revealed obstructive CAD (luminal stenosis >50%), but 6 (3%) athletes  
262 and 4 (7%) controls had mild stenosis (25-49%) (**Table 2**). Coronary plaques were  
263 predominantly calcified in both athletes and controls (80% versus 63%; P=0.08)  
264 although athletes had a lower prevalence of mixed morphology plaques (**Figure 2b**).

#### 265 **Coronary plaque volume, burden, and composition and coronary inflammation:**

266 Quantitative analysis revealed no differences in total, calcified, low density calcified,  
267 and non-calcified plaque volumes between the two groups (**Figure 3, Table 3**) In  
268 contrast, a higher burden of calcified plaque was observed in controls.

269 The level of coronary inflammation as derived by FAI<sub>RCA</sub> was significantly higher (less  
270 negative) in female athletes compared with controls (-64 ± 7.9 HU versus -69 ± 8.4  
271 HU, P=0.002 (**Table 3; Figure 4a**). Subgroup analysis revealed that FAI<sub>RCA</sub> was

272 significantly higher (more inflammation) in athletes with CAC score =0 compared to  
273 those with a CAC score >0) (-62.9± 7.3 versus -66.0 ± 8.8 HU; P=0.024) and compared  
274 to controls with a CAC score=0 (-62.9± 7.3 versus -68.2 ± 8.1 HU; P=0.001) (**Figure**  
275 **4b**).

276

#### 277 **Determinants of coronary atherosclerosis:**

278 Univariate analysis revealed that age, years of exercise, absolute peak VO<sub>2</sub>, resting  
279 systolic blood pressure, lower coronary inflammation (FAI<sub>RCA</sub>) and lower values of  
280 HDL-C, were associated with an increased probability of a CAC score>0. Multivariate  
281 logistic regression showed a positive association between age and CAC score> 0 (OR:  
282 1.14 per year; 95% CI: 1.07–1.21); p<0.001] and resting SBP (OR: 1.03 per mmHg;  
283 95% CI: 1.008–1.06); p=0.012] and an inverse association with HDL-C (OR: 0.34 per  
284 mol/L, 95% CI: 0.15-0.79; p=0.011) (**Table 4**). Among athletes, markers of coronary  
285 atherosclerosis were found in most women aged >65 years old (n=18) with 78%  
286 showing evidence of coronary plaque(s), 22% demonstrating a CAC score >100 AU  
287 and 11% revealing a CAC score >400 AU. Indeed, a CAC score >100 AU was almost  
288 confined to women aged ≥65 years old (**Figure 5**).

#### 289 **Determinants of coronary inflammation:**

290 A higher degree of coronary inflammation was associated with, years of exercise,  
291 peak VO<sub>2</sub>, a lower BMI and lower age and a higher HDL. Multivariate linear  
292 regression identified a positive correlation (R<sup>2</sup>=0.19) between inflammation and peak

293 VO<sub>2</sub> (beta 0.44 per ml/min/kg 95% CI 0.24- 0.64; p<0.01) and HDL (beta 1.4 per  
294 mmol/L 95% CI 0.10- 2.7; p<0.05).

295

#### 296 **Myocardial scar:**

297 Five athletes had major scar within the left ventricular myocardium including 2 with  
298 an ischaemic pattern (one with a small area of subendocardial basal inferolateral  
299 scar and the other with a small area of focal transmural basal inferior scar) and 3  
300 athletes with non-ischaemic scar affecting the mid portion of the lateral LV wall.  
301 Neither of the 2 athletes with ischaemic scar revealed any evidence of CAD on CCTA.

302

#### 303 **DISCUSSION**

304 There are few existing studies reporting coronary atherosclerosis in master female  
305 athletes with a cumulative total of <100 athletes<sup>6,10-12</sup>. Based on the relatively small  
306 numbers and contradictory conclusions in these small studies, it is difficult to infer  
307 whether increased CAC and plaque burden observed in some female athletes  
308 reflects advanced age, cumulative effects of prodigious exercise, or other factors.

309 In the current study, we investigated the prevalence of markers of coronary  
310 atherosclerosis in 196 female master athletes and 59 ostensibly healthy and  
311 relatively sedentary women who were predominantly post-menopausal and had a  
312 low atherosclerotic risk profile. Despite a significantly larger cohort of athletes, we  
313 did not observe any differences in CAC score, number of coronary plaques, plaque  
314 volume or the morphology of the coronary plaques between the two groups. Both

315 athletes (21%) and controls (32%) had a low prevalence of CAD, although athletes  
316 were less likely to have a CAC score >50<sup>th</sup> and 75<sup>th</sup> percentile for age. Age was the  
317 most important determinant of an elevated CAC score and most females with  
318 markers of coronary atherosclerosis were aged ≥65years old.

319

### 320 **Predictors of coronary atherosclerosis:**

321 Exercise duration and volume have been associated with CCTA markers of  
322 atherosclerosis in male athletes<sup>3</sup>, however we did not observe any significant  
323 association with the exercise history and CAC score even though our female athletes  
324 had exercised for a median of 33 years and participated in a median of 90 endurance  
325 events, which is comparable with previous studies in male athletes with raised CAC  
326 score<sup>3,4,6</sup>. Several mechanisms have been implicated for the increased coronary  
327 atherosclerosis in male master athletes<sup>7,8,22</sup>, including damage from mechanical  
328 stresses of bending and flexing of the coronary arteries, increased LV mass, exercise-  
329 induced hypertension<sup>23</sup>, post-exertional increased parathyroid levels<sup>24,25</sup> and  
330 coronary inflammation<sup>26</sup>. We observed a SBP>190mmHg during exercise in a quarter  
331 of our athletes, but could not reveal any association with CAD. Similarly, exercise-  
332 induced elevations of PTH concentrations were observed, but the magnitude of  
333 these changes were equal in athletes and controls and did not correlate with  
334 coronary calcification. In contrast, traditional risk factors such as age, resting blood  
335 pressure and lipid profile influenced CAC score in female athletes. As opposed to  
336 previous studies in master male athletes, we could not demonstrate any association  
337 between the duration and volume of exercise and an elevated CAC<sup>3,27</sup>.

338

339 **Coronary Inflammation:**

340 Several studies have indicated that there may be a threshold beyond which high-  
341 intensity endurance exercise can cause increased oxidative stress and reduced levels  
342 of anti-oxidants<sup>28,29</sup>. Schwarz *et al* revealed an acute and transient increase in post-  
343 race apoptotic endothelial microparticles in 99 middle-aged marathon runners,  
344 including 22% females, indicating that high intensity exercise may be linked to  
345 endothelial cell damage and a pro-inflammatory response<sup>30</sup>. Lin *et al*<sup>26</sup> investigated  
346 coronary artery plaque characteristics before and after completion of a 140-day race  
347 entailing 25.7 miles/day with one rest day per week. Among the 4 runners with prior  
348 CAD, there was an increase in non-calcified plaque volume at sites of pre-existing  
349 disease, whereas there was no evidence of *de novo* plaque in the remaining 5  
350 runners. These observations suggest that extreme endurance exercise may stimulate  
351 CAD progression independent of traditional atherosclerotic factors, through  
352 mechanisms including inflammation. We revealed an increased prevalence of  
353 coronary inflammation in our female athletes compared with controls, however this  
354 was not a determinant or associated with a raised CAC score. Conversely, there  
355 appeared to be an inverse trend between inflammation in athletes with a normal  
356 CAC score versus athletes with an abnormal CAC score. It should be noted, however,  
357 that most female athletes in our cohort had a zero CAC score and individuals with  
358 conventional risk markers for endothelial damage had been excluded from the study.

359 **Sex disparities:**



360 Our data suggest that there is sex-specific coronary artery remodeling in master  
361 athletes. Whereas our previous experience in male athletes has shown a higher  
362 prevalence of high CAC (>100 AU) and increased prevalence of coronary plaques  
363 compared with healthy controls<sup>7-9</sup> we did not observe similar results in our female  
364 master athletes. In contrast, female master athletes were less likely to have a  
365 CAC>50<sup>th</sup> and 75<sup>th</sup> centile and mixed morphology plaques compared with healthy  
366 non athletes. Age was the most important determinant of CAD. Although older  
367 female athletes (>65-years-old) showed a higher prevalence of CAC score>0 and  
368 plaque burden compared with younger women, we observed exclusively non-  
369 obstructive CAD in all age categories compared with previous reports of significant  
370 stenoses (>50%) in 6-8% males<sup>6,27</sup>. Sex-specific characteristics including hormonal  
371 <sup>31,32</sup>, hemodynamic, anthropometric, and psychological factors may be protective in  
372 female master athletes compared with male athletes.

373 Despite the lack of correlation between previously speculated associations between  
374 exercise and markers of coronary atherosclerosis on CCTA among our female  
375 athletes, we identified ischaemic scar in two athletes who had no evidence of CAD,  
376 suggesting that there may be other mechanisms for limited infarction, such as  
377 coronary spasm, demand ischaemia or spontaneous occlusion of micro vessels due  
378 to a prothrombotic state although our numbers are too small to make any strong  
379 inferences.

380

381 **Limitations:**

382 Our study has several limitations. We relied solely on subjective assessment for  
383 menstrual status rather than endocrine profiles, therefore we cannot be certain how  
384 far our results were affected by circulating estrogen concentrations. We did not  
385 investigate the effect of dietary habits or genetic predisposition in the development  
386 of atherosclerosis in our athletes. Most of our athletes were white, and all were  
387 involved in endurance sports therefore it is uncertain whether these results can be  
388 extrapolated in athletes of different ethnicity or sports disciplines.

389

## 390 **CONCLUSION**

391 In contrast with previous experience in male master endurance athletes, female  
392 counterparts do not reveal increased CAC scores or plaque burden compared with  
393 relatively sedentary healthy women. Among the small number of female athletes  
394 with increased CAC scores, age, blood pressure and lipid profile were the most  
395 important determinants of coronary atherosclerosis rather than the volume,  
396 duration and intensity of exercise. Larger studies in even older master female  
397 athletes may help delineate sex related differences in coronary artery remodeling in  
398 lifelong endurance athletes more precisely.

399

## 400 **Acknowledgements:**

401 The authors would like to acknowledge 1. Dr Sarojini David for assisting and  
402 interpreting the coronary computed tomography angiograms. 2. Paulo Bulleros and

403 Zephryn Fanton for assistance with transthoracic echocardiography and  
404 cardiopulmonary exercise tests.

405

406 **Funding**

407 Dr Efstathios Papatheodorou was funded by a research grant provided by the  
408 charitable organisation Cardiac Risk in the Young (CRY).

409 **Disclosures**

410 None of the authors have any conflicts to declare.

## 411 References

- 412 1. Lavie CJ, Arena R, Swift DL, Johannsen NM, Sui X, Lee DC, Earnest CP, Church TS,  
413 O’Keefe JH, Milani R V, Blair SN. Exercise and the cardiovascular system: Clinical  
414 science and cardiovascular outcomes. *Circ Res*. 2015;117:207–219.
- 415 2. Lee IM, Shiroma EJ, Lobelo F, Puska P, Blair SN, Katzmarzyk PT, Alkandari JR,  
416 Andersen LB, Bauman AE, Brownson RC, Bull FC, Craig CL, Ekelund U, Goenka S,  
417 Guthold R, Hallal PC, Haskell WL, Heath GW, Inoue S, Kahlmeier S, Kohl HW, Lambert  
418 EV, Leetongin G, Loos RJF, Marcus B, Martin BW, Owen N, Parra DC, Pratt M, Ogilvie  
419 D, Reis RS, Sallis JF, Sarmiento OL, Wells JC. Effect of physical inactivity on major non-  
420 communicable diseases worldwide: An analysis of burden of disease and life  
421 expectancy. *The Lancet*. 2012;380:219–229.
- 422 3. Aengevaeren VL, Mosterd A, Braber TL, Prakken NHJ, Doevendans PA, Grobbee DE,  
423 Thompson PD, Eijsvogels TMH, Velthuis BK. The Relationship Between Lifelong  
424 Exercise Volume and Coronary Atherosclerosis in Athletes. *Circulation*. 2017;
- 425 4. Mohlenkamp S, Lehmann N, Breuckmann F, Brocker-Preuss M, Nassenstein K, Halle  
426 M, Budde T, Mann K, Barkhausen J, Heusch G, Jockel K-H, Erbel R. Running: the risk of  
427 coronary events : Prevalence and prognostic relevance of coronary atherosclerosis in  
428 marathon runners. *Eur Heart J*. 2008;29:1903–1910.
- 429 5. De Bosscher R, Dausin C, Claus P, Bogaert J, Dymarkowski S, Goetschalckx K, Ghekiere  
430 O, Van De Heyning CM, Van Herck P, Paelinck B, El Addouli H, La Gerche A, Herbots L,  
431 Willems R, Heidbuchel H, Claessen G, Van Soest S, Claeys M, Hespel P, Dresselaers T,  
432 Miljoen H, Belmans A, Favere K, Vermeulen D, Witvrouwen I, Hansen D, Eijnde BO,  
433 Thijs D, Vanvoorden P. Lifelong endurance exercise and its relation with coronary  
434 atherosclerosis. *Eur Heart J*. 2023;
- 435 6. Merghani A, Maestrini V, Rosmini S, Cox AT, Dhutia H, Bastiaenan R, David S, Yeo TJ,  
436 Narain R, Malhotra A, Papadakis M, Wilson MG, Tome M, Alfakih K, Moon JC, Sharma  
437 S. Prevalence of Subclinical Coronary Artery Disease in Masters Endurance Athletes  
438 with a Low Atherosclerotic Risk Profile. *Circulation* [Internet]. 2017;136:126–137.  
439 Available from: <http://ahajournals.org>
- 440 7. Aengevaeren VL, Mosterd A, Sharma S, Prakken NHJ, Möhlenkamp S, Thompson PD,  
441 Velthuis BK, Eijsvogels TMH. Exercise and Coronary Atherosclerosis. *Circulation*.  
442 2020;141:1338–1350.
- 443 8. Parry-Williams G, Sharma S. The effects of endurance exercise on the heart: panacea  
444 or poison? *Nat Rev Cardiol*. 2020;17:402–412.
- 445 9. Sharma S, Merghani A, Mont L. Exercise and the heart: the good, the bad, and the  
446 ugly. *Eur Heart J*. 2015;36:1445–1453.
- 447 10. Bachman NP, Terwoord JD, Richards JC, Braun B, Green CP, Luckasen GJ, Dinunno FA.  
448 Comprehensive assessment of cardiovascular structure and function and disease risk  
449 in middle-aged ultra-endurance athletes. *Atherosclerosis*. 2021;320:105–111.
- 450 11. Roberts WO, Schwartz RS, Kraus SM, Schwartz JG, Peichel G, Garberich RF, Lesser JR,  
451 Oesterle SN, Wickstrom KK, Knickelbine T, Harris KM. Long-Term Marathon Running

- 452 Is Associated with Low Coronary Plaque Formation in Women. *Med Sci Sports Exerc.*  
453 2017;49:641–645.
- 454 12. Jafar O, Friedman J, Bogdanowicz I, Muneer A, Thompson PD, Ling J, Messina A, Yen  
455 M, Wakefield D, Varanasi P, Haleem K. Assessment of Coronary Atherosclerosis Using  
456 Calcium Scores in Short- and Long-Distance Runners. *Mayo Clin Proc Innov Qual*  
457 *Outcomes.* 2019;3:116–121.
- 458 13. Craig CL, Marshall AL, Sjöström M, Bauman AE, Booth ML, Ainsworth BE, Pratt M,  
459 Ekelund U, Yngve A, Sallis JF, Oja P. International physical activity questionnaire: 12-  
460 Country reliability and validity. *Med Sci Sports Exerc.* 2003;35:1381–1395.
- 461 14. Kurtze N, Rangu V, Hustvedt BE. Reliability and validity of the international physical  
462 activity questionnaire in the Nord-Trøndelag health study (HUNT) population of men.  
463 *BMC Med Res Methodol* [Internet]. 2008 [cited 2023 Nov 16];8:63. Available from:  
464 [/pmc/articles/PMC2577099/](#)
- 465 15. Sharma S, Elliott PM, Whyte G, Mahon N, Virdee MS, Mist B, McKenna WJ. Utility of  
466 metabolic exercise testing in distinguishing hypertrophic cardiomyopathy from  
467 physiologic left ventricular hypertrophy in athletes. *J Am Coll Cardiol.* 2000;36:864–  
468 870.
- 469 16. Dey D, Cheng VY, Slomka PJ, Nakazato R, Ramesh A, Gurudevan S, Germano G,  
470 Berman DS. Automated 3-dimensional quantification of noncalcified and calcified  
471 coronary plaque from coronary CT angiography. *J Cardiovasc Comput Tomogr.*  
472 2009;3:372–382.
- 473 17. Dey D, Schepis T, Marwan M, Slomka PJ, Berman DS, Achenbach S. Automated three-  
474 dimensional quantification of noncalcified coronary plaque from coronary CT  
475 angiography: Comparison with intravascular US. *Radiology.* 2010;257:516–522.
- 476 18. Oikonomou EK, Marwan M, Desai MY, Mancio J, Alashi A, Hutt Centeno E, Thomas S,  
477 Herdman L, Kotanidis CP, Thomas KE, Griffin BP, Flamm SD, Antonopoulos AS,  
478 Shirodaria C, Sabharwal N, Deanfield J, Neubauer S, Hopewell JC, Channon KM,  
479 Achenbach S, Antoniades C. Non-invasive detection of coronary inflammation using  
480 computed tomography and prediction of residual cardiovascular risk (the CRISP CT  
481 study): a post-hoc analysis of prospective outcome data. *Lancet.* 2018;392:929–939.
- 482 19. Antonopoulos AS, Sanna F, Sabharwal N, Thomas S, Oikonomou EK, Herdman L,  
483 Margaritis M, Shirodaria C, Kampoli A-M, Akoumianakis I, Petrou M, Sayeed R,  
484 Krasopoulos G, Psarros C, Ciccone P, Brophy CM, Digby J, Kelion A, Uberoi R, Anthony  
485 S, Alexopoulos N, Tousoulis D, Achenbach S, Neubauer S, Channon KM, Antoniades C.  
486 Detecting human coronary inflammation by imaging perivascular fat. *Sci Transl Med.*  
487 2017;9:eaal2658.
- 488 20. Goeller M, Achenbach S, Cadet S, Kwan AC, Commandeur F, Slomka PJ, Gransar H,  
489 Albrecht MH, Tamarappoo BK, Berman DS, Marwan M, Dey D. Pericoronary Adipose  
490 Tissue Computed Tomography Attenuation and High-Risk Plaque Characteristics in  
491 Acute Coronary Syndrome Compared With Stable Coronary Artery Disease. *JAMA*  
492 *Cardiol.* 2018;3:858.

- 493 21. Bhuva AN, D'Silva A, Torlasco C, Jones S, Nadarajan N, Van Zalen J, Chaturvedi N,  
494 Lloyd G, Sharma S, Moon JC, Hughes AD, Manisty CH. Training for a First-Time  
495 Marathon Reverses Age-Related Aortic Stiffening. *J Am Coll Cardiol*. 2020;75:60–71.
- 496 22. Merghani A, Sharma S. The veteran athlete's heart. *Eur Heart J*. 2015;36:954–955.
- 497 23. Kim CH, Park Y, Chun MY, Kim YJ. Exercise-induced hypertension can increase the  
498 prevalence of coronary artery plaque among middle-aged male marathon runners.  
499 *Medicine*. 2020;99:e19911.
- 500 24. Bouassida A, Latiri I, Bouassida S, Zalleg D, Zaouali M, Feki Y, Gharbi N, Zbidi A, Tabka  
501 Z. Parathyroid hormone and physical exercise: A brief review. *J Sports Sci Med*.  
502 2006;5:367–374.
- 503 25. Kamycheva E, Sundsfjord J, Jorde R. Serum parathyroid hormone levels predict  
504 coronary heart disease: The Tromsø Study. *Eur J Prev Cardiol*. 2004;11:69–74.
- 505 26. Lin J, DeLuca JR, Lu MT, Ruehm SG, Dudum R, Choi B, Lieberman DE, Hoffman U,  
506 Baggish AL. Extreme Endurance Exercise and Progressive Coronary Artery Disease. *J*  
507 *Am Coll Cardiol*. 2017;70:293–295.
- 508 27. Aengevaeren VL, Mosterd A, Bakker EA, Braber TL, Nathoe HM, Sharma S, Thompson  
509 PD, Velthuis BK, Eijsvogels TMH. Exercise Volume Versus Intensity and the  
510 Progression of Coronary Atherosclerosis in Middle-Aged and Older Athletes: Findings  
511 from the MARC-2 Study. *Circulation*. 2023;147:993–1003.
- 512 28. Bergholm R, Mäkimattila S, Valkonen M, Liu ML, Lahdenperä S, Taskinen MR,  
513 Sovijärvi A, Malmberg P, Yki-Järvinen H. Intense physical training decreases  
514 circulating antioxidants and endothelium-dependent vasodilatation in vivo.  
515 *Atherosclerosis*. 1999;145:341–349.
- 516 29. Goto C, Higashi Y, Kimura M, Noma K, Hara K, Nakagawa K, Kawamura M, Chayama K,  
517 Yoshizumi M, Nara I. Effect of different intensities of exercise on endothelium-  
518 dependent vasodilation in humans: Role of endothelium-dependent nitric oxide and  
519 oxidative stress. *Circulation*. 2003;108:530–535.
- 520 30. Schwarz V, Düsing P, Liman T, Werner C, Herm J, Bachelier K, Krüll M, Brechtel L,  
521 Jungehülsing GJ, Haverkamp W, Böhm M, Endres M, Haeusler KG, Laufs U. Marathon  
522 running increases circulating endothelial- and thrombocyte-derived microparticles.  
523 *Eur J Prev Cardiol*. 2018;25:317–324.
- 524 31. Barrett-Connor E, Bush TL. Estrogen and Coronary Heart Disease in Women. *JAMA:*  
525 *The Journal of the American Medical Association*. 1991;265:1861–1867.
- 526 32. Versi E, Collins P, Stevenson JC, Godsland IF, Riedel M, Mügge A. Oestrogen and  
527 protection against myocardial ischaemia [Internet]. *The Lancet*. 1993;342:871–872.  
528 Available from: <http://www.thelancet.com/article/014067369392733A/fulltext>
- 529
- 530

531 **Table 1** Baseline demographics, atherosclerotic risk profile characteristics, exercise  
 532 history and imaging characteristics of female master athletes and sedentary controls.

	<b>Female Athletes N=196</b>	<b>Controls N=59</b>	<b>p value</b>
Age (years)	54.8 ± 7.4	54 ± 6.4	0.99
Height (cm)	166.4 ± 6.4	163.7 ± 7.4	<b>&lt;0.01</b>
Weight (kg)	59 ± 8.1	66 ± 6	<b>&lt;0.01</b>
BMI (kg/m <sup>2</sup> )	21.4 ± 4.1	24 ± 5.5	<b>&lt;0.01</b>
White Caucasian n (%)	180 (92)	55 (93)	0.92
<b><i>Risk factors for CAD</i></b>			
Systolic BP (mm Hg)	115 ± 6.6	124 ± 6.9	<b>&lt;0.01</b>
Diastolic BP (mm Hg)	74.3 ± 7.6	78.3 ± 7.8	<b>&lt;0.01</b>
Total Cholesterol (mmol/L)	5.0 ± 0.5	4.8 ± 0.6	<b>&lt;0.01</b>
HDL-C (mmol/L)	2.4 ± 0.3	1.9 ± 0.3	<b>&lt;0.01</b>
Menopausal n (%)	139 (71)	40 (68)	0.85
Framingham 10-year risk score	1.5 ± 0.6	2.1 ± 0.7	0.09
<b><i>Exercise History</i></b>			
Years of Exercise	33 (25 - 39)	2 (0 - 1)	<b>&lt;0.01</b>
Hours of exercise per week	8 (6 - 10)	0 (0 - 1)	<b>&lt;0.01</b>
Days of exercise per week	6 (4 - 6)	0 (0 - 2)	<b>&lt;0.01</b>
Total Competitions	90 (15 - 134)	0 (0 - 0)	<b>&lt;0.01</b>
METS minutes per week	7225 (4784 – 10647)	233 (120-919)	<b>&lt;0.01</b>
Vigorous METS minutes per week	2880 (2160 – 4800)	0 (0 - 280)	<b>&lt;0.01</b>
<b><i>CPET and CMR parameters</i></b>			
Peak VO <sub>2</sub> (ml/min/kg)	42 ± 4.6	25 ± 7.3	<b>&lt;0.01</b>
PeakVO <sub>2</sub> predicted (%)	163.5 ± 24.6	104.8 ± 19.9	<b>&lt;0.01</b>
Exercise induced HTN n (%)	48 (25%)	6 (10%)	<b>&lt;0.01</b>
Post exertional PTH levels (pmol/l)	7.84 ± 2.5	8.3 ± 2.4	0.40

Raised post-exertional PTH n (%)	114 (58)	35 (57)	0.91
LVEDV (ml)	137 ± 23	121 ± 21	<b>&lt;0.01</b>
LVEDV/BSA (ml/mm <sup>2</sup> )	82 ± 12	69 ± 8	<b>&lt;0.01</b>
RVEDV (ml)	132 ± 26	124 ± 27	<b>&lt;0.01</b>
RVEDV/BSA (ml/mm <sup>2</sup> )	80 ± 14	69 ± 10	<b>&lt;0.01</b>
Left Ventricular Mass (g)	129.5 ± 32	112 ± 25.5	<b>&lt;0.01</b>
RV insertion point fibrosis n (%)	62 (32)	5 (8)	<b>&lt;0.01</b>
Ischemic LGE	2 (1%)	0 (0%)	0.54

533

534 BP=Blood Pressure; CAD=Coronary Artery Disease; CMR=Cardiovascular magnetic

535 resonance; CPET=Cardiopulmonary exercise test; HDL-C=High-Density Lipoprotein

536 Cholesterol; HTN=Hypertension; LGE= Late Gadolinium Enhancement; LVEDV = LV

537 End-diastolic Volume; METS=Metabolic Equivalent; PTH=parathyroid hormone;

538 RVEDV = RV End-diastolic Volume; SD = Standard Deviation; VO<sub>2</sub> = Oxygen

539 Consumption. Values are presented as mean ± SD, n (%), or median (Interquartile

540 25%-75%).

541

542



543 **Table 2.** Comparison of CAC score, plaque prevalence, distribution and coronary  
 544 inflammation in female master athletes and sedentary controls. Expressed as n (%)

	<b>Athletes</b> n=196	<b>Controls</b> n=59	<b>p-value</b>
Median CACS (AU)	0 (0 - 0)	0 (0 - 7)	0.08
CACS > 0 AU	41 (21%)	19 (32%)	0.07
CACS > 100 AU	7 (3.6%)	5 (8.5%)	0.12
CACS > 400 AU	2 (1%)	2 (3%)	0.20
CACS centile >50%	37 (19%)	19 (32%)	<b>0.03</b>
CACS centile >75%	28 (14%)	15 (25%)	<b>0.045</b>
Individuals with ≥1 Plaques	42 (21%)	19 (32%)	0.09
Individuals with solely calcified plaques	27 (14%)	12 (20%)	0.22
Individuals with a combination of calcified and non-calcified plaques	15 (8%)	7 (12%)	0.31
Total number of plaques			
Calcific	61(80%)	24 (63%)	0.08
Mixed morphology	15 (18%)	14 (37%)	<b>0.03</b>
Non calcific only	1 (0.5%)	0	n/a
Left main plaque	4 (2%)	1 (2%)	0.86
Left anterior descending	36 (16%)	9 (15%)	0.58
Circumflex coronary artery	6 (1%)	3 (5.1%)	0.46
Right coronary artery	11 (5.1%)	4 (6.8%)	0.74
Number of vessels			
1-vessel disease	32 (16%)	13 (22%)	0.20
2-vessel disease	7 (4%)	2 (3.4%)	
3-vessel disease	3 (1.5%)	4 (6.8%)	
Stenosis >50%	0 (0%)	0 (0%)	

Stenosis 25-49%	6 (3%)	4 (7%)	0.22
Stenosis <25%	36 (18%)	15 (25%)	

545

546 AU= Agatston Units; CACS= Coronary Artery Calcium Score; CAC = Coronary artery  
547 calcium; CAD = Coronary artery disease, FAI-RCA = Fat Attenuation Index in the Right  
548 Coronary Artery; LMCA = Left main coronary artery. Values are presented as n  
549 (percentage) or medians (Interquartile range 25%, 75%).

550

551

552 **Table 3.** Comparison of plaque volume, burden and composition in master athletes  
 553 and controls. Values are presented as median and 75%-25% interquartile range (IQR)  
 554 if not otherwise indicated.

	<b>Athletes N=35</b>	<b>Controls N=10</b>	<b>p value</b>
<b>Volume, mm<sup>3</sup> (IQR)</b>			
Vessel	163 (93-283)	270 (110-379)	0.11
Total Plaque	16 (3-56)	49 (5-142)	0.08
Calcific plaque	3.6 (1.3-14)	4.63 (2-21.6)	0.53
NC plaque	0 (0-32)	16.99 (0-132)	0.29
LD NC plaque	0 (0-2.1)	0.67 (0-13.5)	0.34
Necrotic Core	0 (0-2.2)	0.65 (0-13.5)	0.34
Fibrous Fatty	0 (0-14.6)	2.7 (0-41.6)	0.4
Fibrous	0 (0-9)	10.9 (0-36)	0.21
Dense Calcium	3.6 (1.3-18)	5.8 (2.8-28.6)	0.36
Contrast Density Drop	15.2 (7.3-32)	20.8 (12-34)	0.56
<b>Burden, % (IQR)</b>			
Total Plaque	10.8 (2.8-21)	15.4 (4.6-28)	0.46
Calcific Plaque	1.8 (1.1-6.9)	4.1 (0.6-6.1)	<b>0.027</b>
NC Plaque	0 (0-19)	4.5 (0-24)	0.39
LD-NCP Plaque	0 (0-1.5)	0.2 (0-2.3)	0.51
<b>Composition, % (IQR)</b>			
Calcific Plaque	100 (8.2-100)	70.1 (4.3-100)	0.65
NC Plaque	0 (0-91.4)	29.8 (0-93.5)	0.51
LD NCP Plaque	0 (0-10.1)	1.2 (0-15.3)	0.51
<b>Coronary Inflammation</b>	<b>N=151</b>	<b>N=36</b>	
FAI_RCA	-64 ± 7.9	-69 ± 8.4	<b>0.002</b>

555 CP= calcific plaque, NC= non-calcific, LD= low density



557 **Table 4.** Determinants of coronary atherosclerosis in female master athletes.  
 558 Univariate and multivariate analysis.

	<b>CACS=0 N=155</b>	<b>CACS&gt;0 N=41</b>	<b>Univariate</b>	<b>Multi- variate R<sup>2</sup>=0.21</b>
Age	53 ± 0.6	59.7 ± 1.5	<b>&lt;0.001</b>	<b>&lt;0.001</b>
Menopausal	107 (69%)	32 (78%)	0.29	
BMI (kg/m <sup>2</sup> )	21.3 (20-22.6)	21.6 (20-23.4)	0.62	
Years of Exercise	31 ± 11	35 ± 12	<b>0.047</b>	
Hours per Week	8 (7-10)	8 (7-11)	0.93	
Days per Week	6 (5-6)	5.3 (4-6)	0.24	
Total Competitions	76 (30-185)	100 (50-145)	0.66	
Total METS min/w	7239 (4784-10932)	6835 (4743-9498)	0.59	
Vigorous METS min/w	2880 (2880-4800)	2880 (2160-4800)	0.92	
PTH levels (pmol/L)	7.3 (6-9.4)	7.7 (5.9-9.8)	0.66	
Total cholesterol	5.1 (4.7 – 6)	5.4 (4.7 – 5.9)	0.50	
HDL-C (mmol/L)	2.5 ± 0.8	2.1 ± 0.7	<b>0.007</b>	<b>0.011</b>
Peak VO <sub>2</sub> (ml/min/kg)	41.6 ± 6.18	38.8 ± 8.35	<b>0.020</b>	
Peak VO <sub>2</sub> predicted (%)	163 ± 23.4	165.5 ± 28.4	0.90	
FAI <sub>RCA</sub> (HU)	-63.6 ± 7.3	-66.7 ± 8.8	<b>0.024</b>	
Resting SBP (mmHg)	113 ± 14	122 ± 16	<b>&lt;0.001</b>	<b>0.012</b>
SBP>190 mmHg <sup>#</sup>	36 (23%)	13 (32%)	0.28	

559

560 FAI<sub>RCA</sub> = Fat Attenuation Index in the Right Coronary Artery; HDL-C= High Density

561 Lipoprotein Cholesterol; HU = Hounsfield Units; METS = Metabolic Equivalents; PTH =

562 Parathyroid Hormone; VO<sub>2</sub> = Oxygen Consumption, SBP: Systolic blood pressure.

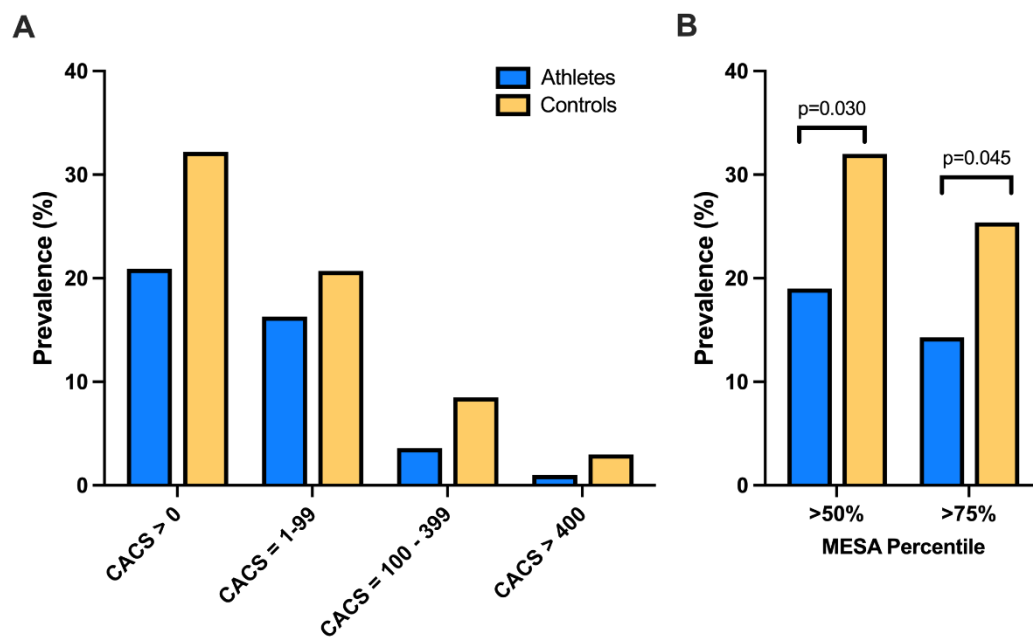
563 # indicates SBP values at peak exercise. Values are presented as n (percentage),

564 medians (Interquartile range 25%, 75%) or mean ± standard deviation.

565

566

567 **Figure 1.** Coronary artery calcium (CAC) score characteristics in female master  
568 athletes and controls. The prevalence of CAC score categories did not differ between  
569 athletes versus controls (panel A), whereas athletes had a significantly lower  
570 prevalence of a CAC score exceeding the 50<sup>th</sup> and 75<sup>th</sup> Multi-Ethnic Study of  
571 Atherosclerosis (MESA) percentile (panel B).



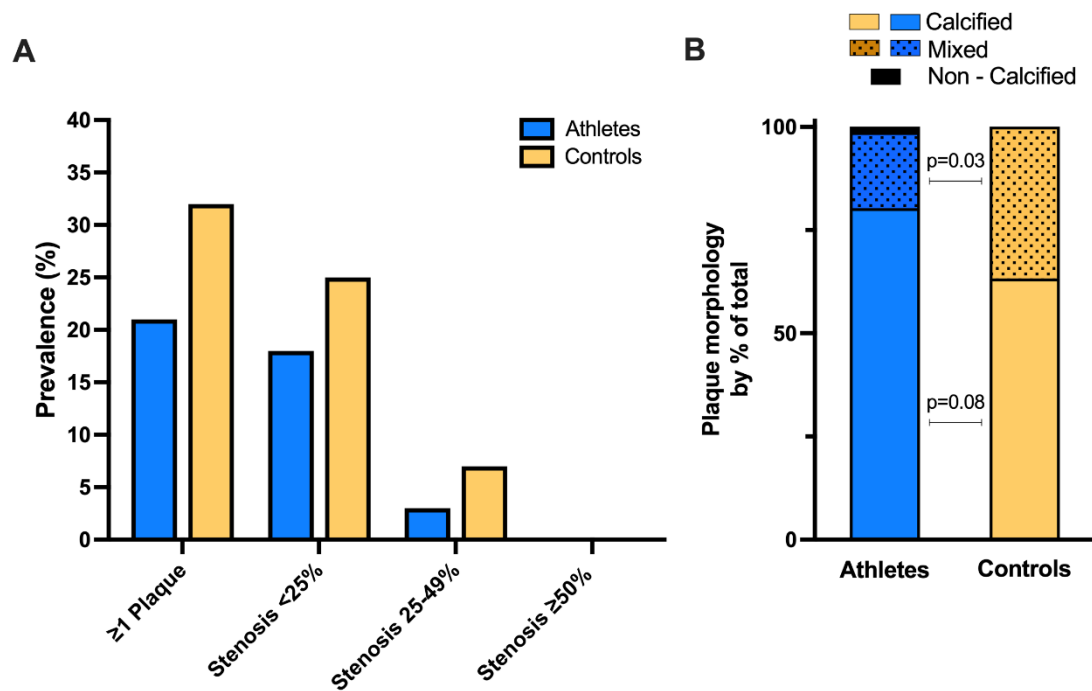
572

573

574

575 **Figure 2. A.** Presence of coronary atherosclerotic plaque and degree of stenosis in  
576 female master athletes and controls. **B.** Plaque morphology in female athletes (76  
577 coronary plaques) and relatively sedentary males (38 coronary plaques).

578



579

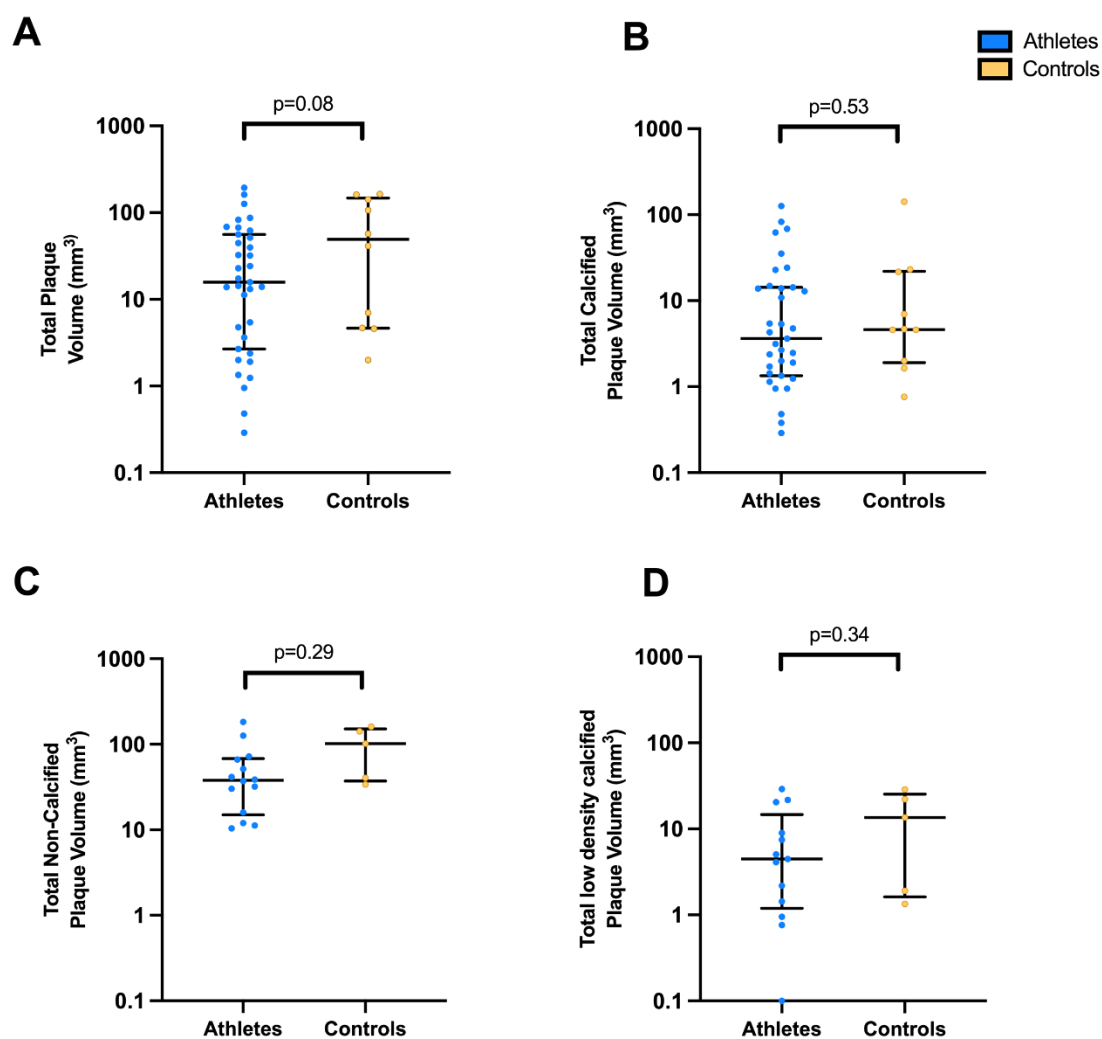
580

581

582

583 **Figure 3.** Quantitative characteristics of coronary atherosclerotic plaque in female  
584 master athletes and controls. Total plaque volume (A), calcified plaque volume (B),  
585 non-calcified plaque volume (C) and low-density calcified plaque volume (D) did not  
586 differ between athletes versus controls.

587



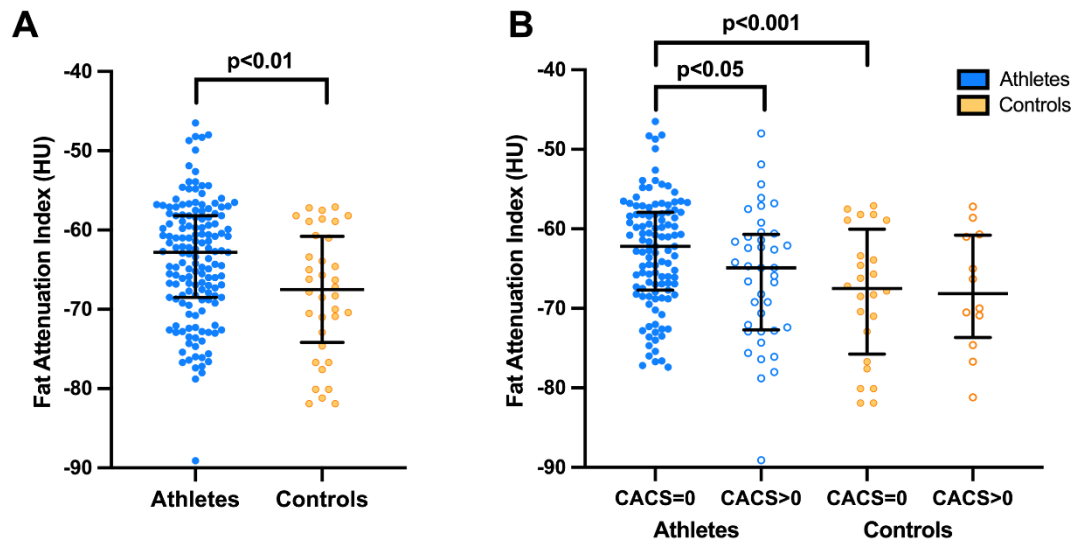
588

589

590



591 **Figure 4** . Fat attenuation index (FAI) measured in female master athletes and  
592 controls. Female athletes showed a significantly higher degree of coronary  
593 inflammation than controls (panel A). Athletes with a zero coronary artery calcium  
594 score (**CACS**) showed a higher FAI than athletes with **CACS**>0 (Panel B).



595

596

597

598

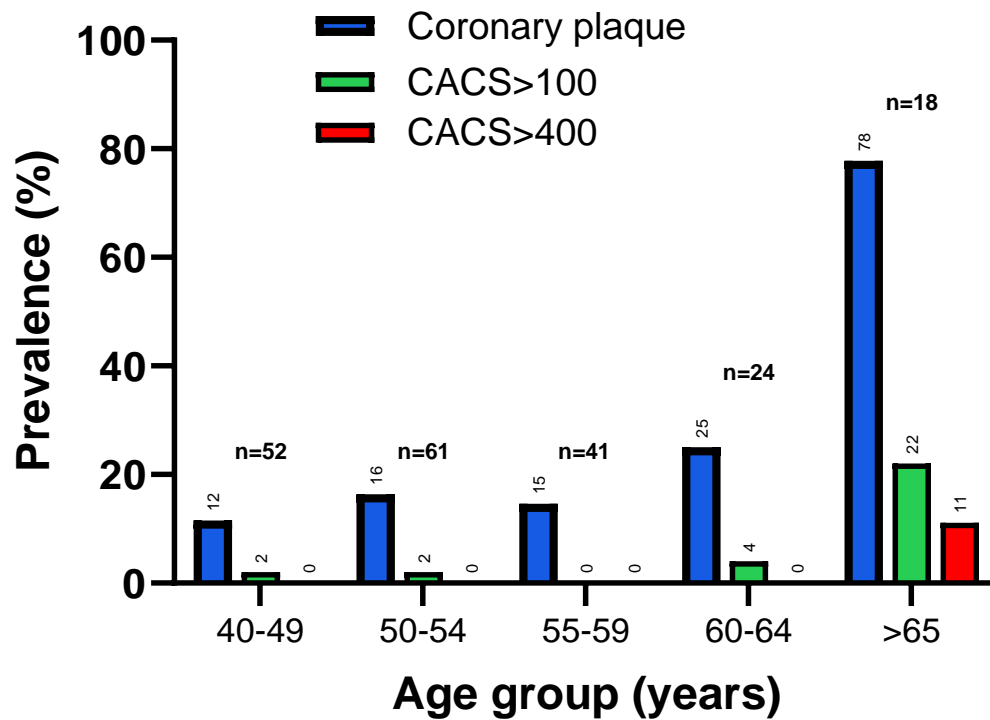
599

600

601

602

603 **Figure 5.** Coronary atherosclerosis in relation to age in female master athletes per  
604 different age groups. The presence of coronary artery calcium score (CACS) >100 AU  
605 and >400 AU was almost confined to female master athletes > 65 years old.



606  
607