

1 **EPCs-derived conditioned medium mitigates chronic cerebral ischemic injury**
2 **through the MIF-activated AKT pathway**

3

4 Ya-Wen Cheng¹, Ling-Yu Yang¹, Yi-Tzu Chen^{1,2}, Sheng-Che Chou^{1,2}, Kuo-Wei
5 Chen^{1,2}, Yi-Hsing Chen^{1,2}, Chuan-Rou Deng¹, I-Chin Chen¹, Wan-Ju Chou^{1,2},
6 Chen-Chih Chang³, Yong-Ren Chen⁴, Hsiao-Lin Hwa⁵, Kuo-Chuan Wang^{1*}, and
7 Meng-Fai Kuo^{1*}

8

9 Short title: **The role of MIF in the EPC-CM in CCI**

10

11 **Affiliations of authors:**

12 1 Division of Neurosurgery, Department of Surgery, National Taiwan University
13 Hospital, Taipei, Taiwan

14 2 Graduate Institute of Clinical Medicine, National Taiwan University College
15 of Medicine, Taipei, Taiwan

16 3 Department of Internal Medicine, National Taiwan University Hospital, College of
17 Medicine, National Taiwan University, Taipei, Taiwan

18 4 Division of Neurosurgery, Department of Surgery, National Taiwan University
19 Hospital Jinshan branch, Taipei, Taiwan

20 5 Department of Obstetrics and Gynecology, National Taiwan University Hospital,
21 Taipei, Taiwan

22

23 ***Corresponding authors:**

24 Meng-Fai Kuo, mfkenator@gmail.com

25 Division of Neurosurgery, Department of Surgery, 7 Chung Shan South Road, Taipei

26 **NOTE: This preprint reports new research that has not been certified by peer review and should not be used to guide clinical practice.**
100, Taiwan

1 TEL: +886-2-23123456 EXT. 271837

2 FAX: +886-2-23934358

3 and

4 Kuo-Chuan Wang, wang081466@yahoo.com.tw

5 Division of Neurosurgery, Department of Surgery, National Taiwan University

6 Hospital, No.7, Chung Shan South Road, Taipei 100, Taiwan

7 TEL: +886932198500

8 FAX: +886-2-23934358

9

10

1 **Abstract**

2 **Background** Chronic cerebral ischemia (CCI) is considered as a prelude to
3 neurodegeneration. Endothelial progenitor cells (EPCs) have been implicated in
4 revascularization and vascular repair in cerebral ischemic diseases. Due to the safety
5 concern and the low survival rate of the transplanted cells, interest has shifted toward
6 the paracrine effect of EPCs. Here, we investigate the effects of EPC-derived
7 conditioned medium (EPC-CM) on the vascular and functional impairments in a
8 rodent model of CCI and the mechanism via which the EPC-CM involves.

9 **Methods** Bilateral internal carotid artery ligation (BICAL) was performed in rats to
10 induce cerebral ischemia. EPC-CM was intracisternally injected 1 week after BICAL.
11 The changes of the microvasculature and behavior were examined 3 weeks after
12 BICAL. The EPC-CM was analyzed by cytokine array for the factors that involved in
13 angiogenesis. The therapeutic effects and mechanism of the candidate factor was
14 validated with oxygen-glucose deprivation-injured endothelial cells and EPCs *in vitro*.

15 **Results** EPC-CM significantly improved the vascular, motor and cognitive
16 impairments of the BICAL rats. Macrophage migration inhibitory factor (MIF) was
17 identified as a key factor in EPC-CM involved in angiogenesis and anti-senescence.
18 Furthermore, recombinant MIF protein mirrored the effects of EPC-CM on EPCs and
19 ECs. These therapeutic effects were decreased by the co-treatment with EPC-CM and
20 MIF-specific antibody both *in vivo* and *in vitro*. MIF operates through multiple
21 pathways, including the AKT pathway, which plays a crucial role in cellular
22 homeostasis. Inhibiting the AKT pathway diminished the protective effect of MIF in
23 the CCI model.

24 **Conclusions** We demonstrated that EPC-CM protected the chronic ischemic rat brain
25 from ischemic injury and promoted functional recovery in rats through MIF-mediated
26 AKT pathway, which indicated that EPC-CM may serve as an alternative potential

1 therapy in chronic cerebral ischemia.

2

3 **Key words:**

4 Endothelial progenitor cell-derived conditioned medium, cerebral ischemia,

5 macrophage migration inhibitory factor, AKT pathway

6

7 **Non-standard Abbreviations and Acronyms**

8 CCI: chronic cerebral ischemia

9 BICAL: bilateral internal carotid artery ligation

10 EPC-CM: endothelial progenitor cell-derived conditioned medium

11 MIF: macrophage migration inhibitory factor

12 OGD: oxygen-glucose deprivation

13 ECs: Endothelial cells

14 HUVEC: human umbilical vein endothelial cell

15 SA- β -gal: senescence associated β -galactosidase

16 DAPI: 4',6-diamidino-2-phenylindole

17 NOR: novel object recognition

18

19

1 **Introduction**

2 Chronic cerebral ischemia (CCI) results from inadequate blood flow to the brain.
3 The decrease in cerebral perfusion induces brain tissue damage, cognitive impairment,
4 and neurodegeneration, eventually causing ischemic stroke and Alzheimer's disease¹⁻⁴.
5 Addressing this issue and finding ways to support neuron survival and neurological
6 recovery is crucial due to the global impact of cerebral ischemic disease.

7 Endothelial progenitor cells (EPCs) are circulating cells capable of becoming
8 endothelial cells for vascular regeneration. They play a vital role in repairing damaged
9 blood vessels in ischemic disease⁵⁻⁷. EPCs secrete a wide range of growth factors,
10 chemokines, cytokines, and extracellular vesicles that contribute to angiogenesis,
11 reconstruct the vascular microenvironment⁸⁻¹⁰, and improved the recovery of
12 neurological function after cerebral injury^{11, 12}. Although cell-based therapy has
13 shown promising effects in preclinical models after stroke, the administration of EPCs
14 may have adverse side effects. Therefore, conditioned medium (CM) collected from
15 EPCs has emerged as an alternative potential cell-free therapeutic agent¹³⁻¹⁵.

16 Our previous study demonstrated that the administration of EPCs combined with
17 indirect revascularization protected against chronic cerebral ischemic injury¹⁶, but the
18 therapeutic effects of EPC-secreted factors have not been investigated in preclinical
19 models of CCI. We investigated the therapeutic effect of secreted factors from EPCs
20 on CCI and the molecular mechanism involved in the neurorepair process. Many
21 proteins and cytokines are secreted from EPCs, and we focused on macrophage
22 migration inhibitory factor (MIF) among the secreted factors¹⁷. MIF is a pleiotropic
23 protein that has the characteristics of a cytokine that is secreted by different types of
24 cell, including neural stem/progenitor cells and EPCs^{18, 19}. In addition to being
25 recognized as a regulator of the immune response, increased studies have
26 demonstrated that MIF is involved in a variety of signaling pathways important for

1 the maintenance of cellular homeostasis, such as promoting cellular survival,
2 angiogenesis, and anti-senescence^{18, 20}.

3 In this study, we used a bilateral internal carotid artery ligation (BICAL) rat model
4 as the CCI animal model and an *in vitro* cell-based system to determine whether
5 EPC-CM promotes the recovery of brain tissue injury and vascular repair and further
6 investigated the molecular mechanism involved in this process. The results
7 demonstrated that EPC-CM can ameliorate ischemic injury and promote vascular
8 repair in the brain via MIF-mediated AKT pathway activation.

1 **Methods**

2

3 This study included the performance of animal experiments and obtaining EPCs from
4 fresh human umbilical cord blood, and was approved by the Institutional Animal Care
5 and Use Committee of National Taiwan University (Approval no. IACUC-20180430)
6 and the Institutional Review Board of National Taiwan University Hospital (Approval
7 no. IRB-201204074RIC and IRB-202012174RIND), Taipei, Taiwan. All surgical
8 procedures were performed according to the Guide for the Care and Use of
9 Laboratory Animals (issued by the National Institutes of Health) and approved by the
10 Committee.

11

12 **Detailed information of the materials and methods**

13 The detailed information of the materials and methods of the *in vivo* and *in vitro*
14 studies were provided in the Supplementary Materials and Methods.

15

16 **Animal model of chronic cerebral ischemia: bilateral internal carotid artery** 17 **ligation (BICAL)**

18 Male Wistar rats (200–250 g, body weight) were randomly assigned to the BICAL
19 surgery or treatment groups, and littermate control. The BICAL procedure was
20 performed as described previously¹⁶.

21

22 **Treatment algorithm**

23 The sham and BICAL animals received an injection of 40 μ l vehicle, i.e, 0.9% normal
24 saline into the cisterna magna, while the treatment groups received intracisternal
25 injection of EPC-CM (40 μ l) or EPC-CM+ MIF Ab (anti-MIF antibody 2 μ g mixed
26 with 40 μ l EPC-CM) 24 hrs after BICAL procedure. The body temperature was

1 maintained stable for 3 hrs after the treatment with vehicle, EPC-CM, or EPC-CM+
2 MIF Ab.

3

4 **Microcirculation assessment**

5 Study and quantification of brain surface microcirculation 3 weeks after BICAL
6 surgery was performed as described previously¹⁶.

7

8 **Microvasculature density**

9 The microvascular densities were measured three weeks after BICAL surgery. The
10 capillary microcirculation on the rat brain surface was evaluated using a CAM1
11 capillary anemometer (KK Technology, UK) with a high-resolution (752 x 582 pixels)
12 monochrome charge-coupled device (CCD) video camera. The microvasculature
13 density was calculated using the De Backer's score²¹.

14

15 **Rotarod performance test**

16 The rotarod test was performed as previously described²¹. Rats were pre-trained for
17 three days at a speed of 4 rpm, 3 sessions per day for 5 min on the instrument (Panlab
18 Rota Rod, Harvard Apparatus) before BICAL surgery. Three weeks after BICAL
19 surgery, the rats were placed on the instrument and the latency to fall was measured
20 under continuous acceleration (4 to 40 rpm for 600 secs) by observers blinded to
21 group assignment.

22

23 **Novel Object Recognition (NOR) test**

24 We conducted the NOR test to assess short-term recognition memory that originally
25 described by Ennaceur and Delacour procedure²².

26

1 **Statistical analysis**

2 Data collection and analysis were carried out by investigators who were blinded to the
3 experimental conditions. Data are expressed as the mean \pm standard deviation (SD).

4 Data was analyzed for normality by the Shapiro–Wilk normality test. One-way
5 analysis of variance (ANOVA) followed by a Post HocTest (Tukey’s multiple
6 comparisons test) was used for normally distributed data. Bar graphs and statistical
7 analysis were performed by GraphPad Prism 7.0 software (GraphPad Software, USA).

8 A P-value of <0.05 was considered a statistically significant difference.

9

10

1 **Results**

2 **EPC-CM treatment rescues the vascular impairment induced by BICAL**

3 The microcirculation on the cortical surface, including the artery (a) and vein (v),
4 showed significantly sparse in BICAL rats as compared with control rats. In addition,
5 arterioles (a) on the brain surface exhibited markedly diffuse vasoconstriction in
6 BICAL rats, resulting in ischemia (Figure 1A, middle panel). Notably, impairment of
7 microvasculature and arterioles were rescued by treatment with EPC-CM (Figure 1A,
8 right panel). As microvascular networks supply oxygen to brain tissue, we detected
9 the microvasculature density, regional blood flow, and partial pressure of brain tissue
10 oxygen (PtO₂) in BICAL rats treated with/without EPC-CM. These measures, which
11 had notably declined in the BICAL rats, were restored with EPC-CM treatment,
12 indicating an improvement in cerebral perfusion (Figure 1B-D). Taken together, these
13 data suggested that EPC-CM rescues the vascular impairment induced by BICAL.

14

15 **EPC-CM and MIF protein promote angiogenesis in OGD-treated endothelial** 16 **cells (ECs)**

17 To investigate the critical factor in EPC-CM that is responsible for mediating vascular
18 and neural repairs in BICAL rats, cytokine array of EPC-CM was performed that
19 showed macrophage migration inhibitory factor (MIF) among the secreted factors of
20 EPC-CM as a putative candidate for promoting angiogenesis and cell survival^{23, 24}
21 (Figure 2A, Table S1). Therefore, we tested the role of MIF in ECs by using human
22 umbilical vein endothelial cells (HUVECs) treated with/without EPC-CM or MIF
23 recombinant protein (rMIF) subjected to oxygen-glucose deprivation (OGD) to mimic
24 chronic ischemic conditions. We investigated cell survival in HUVECs treated with
25 OGD for 24 hrs and found no significant differences between each group, indicating
26 that the condition did not cause significant cell death (Figure 2B). Next, we validated

1 the angiogenesis function of the ECs by performing tube formation and migration
2 assays. As shown in Figure 2C and 2D, compared to normoxia, OGD treatment
3 significantly inhibited tube formation and cell migration. Interestingly, OGD cells
4 treated with EPC-CM or rMIF showed similar increases in tube formation and cell
5 migration (Figure 2C-2D). The data indicated that both EPC-CM and rMIF increase
6 angiogenesis in the *in vitro* chronic ischemic model.

7

8 **EPC-CM and MIF protein promote anti-senescence ability in ECs and EPCs *in*** 9 ***vitro***

10 Senescence is associated with neurodegeneration diseases²⁵. Senescent EPCs showed
11 decreased proliferation and angiogenesis. Therefore, we determined the
12 anti-senescence effect mediated by EPC-CM or rMIF on EPCs and ECs. Young EPCs
13 or ECs were treated with prolonged hydrogen peroxide (H₂O₂) to induce senescence,
14 followed by treatment with EPC-CM (20%) or rMIF (100 ng/ml). As shown in Figure
15 3, H₂O₂ treatment significantly increased the number of senescent cells compared
16 with that in the control (Figure 3, lane 1 vs. lane 2 in the bar graphs). Notably,
17 EPC-CM or rMIF treatment reversed the senescence level in EPCs (Figure 3A) and
18 ECs (Figure 3B). These data indicated that EPC-CM or MIF may promote
19 angiogenesis by rejuvenating senescent EPCs or ECs after ischemic damage.

20

21 **Transduction of EPCs with lenti-hMIF increases cell angiogenesis and** 22 **anti-senescence *in vitro***

23 To further confirm the role of MIF in angiogenesis and anti-senescence, we generated
24 the human MIF-expressing EPCs by lentivirus, and validated the hMIF expression by
25 Western blotting (Figure S1A). Angiogenesis and the anti-senescence capacity were
26 tested in the hMIF-expressing EPCs compared with the lentiviral vector-transduced

1 EPCs (Mock). As shown in Figure S1B and S1C, hMIF-expressing EPCs rescued tube
2 formation and migration with OGD treatment as compared with OGD-treated cells
3 infected with lentiviral vector. In addition, hMIF-expressing EPCs also restored the
4 senescence level after H₂O₂ induction (Figure S1D), consistent with Figure 3. These
5 data proved that MIF is an important protein that regulates angiogenesis and
6 anti-senescence in EPCs.

7

8 **MIF is an important factor in EPC-CM that promotes angiogenesis and brain** 9 **functional recovery in chronic ischemic events**

10 To validate the role of MIF in the recovery of neurological function regulated by
11 EPC-CM, we used anti-MIF antibody (Ab) to specifically block the effect of MIF in
12 EPC-CM. While EPC-CM treatment significantly restored the tube formation (Figure
13 4A) and migration capacity (Figure 4B) inhibited by OGD treatment (Figure 4, lane 2
14 vs. lane 3 in the bar charts), the effect of EPC-CM was reduced by MIF Ab treatment
15 (Figure 4, lane 3 vs. lane 4 in the bar charts). The data indicated that MIF is the key
16 factor in EPC-CM that promotes angiogenesis and anti-senescence capacity.

17 To further study the effect of MIF in the CCI animal model. Wistar rats were
18 randomly separated into four groups (control, BICAL, BICAL+EPC-CM,
19 BICAL+EPC-CM+MIF Ab) and underwent BICAL surgery followed by EPC-CM or
20 EPC-CM+MIF Ab treatment as previously described (Figure 5A). The blood flow and
21 PtO₂ were examined for the repair of the microcirculation. According to Figure 5B
22 and 5C, EPC-CM showed a great vascular repair effect on blood flow and PtO₂,
23 which was significantly repressed by MIF-Ab co-treatment, indicating that MIF plays
24 an important role in EPC-CM-mediated vascular repair. Furthermore, we investigated
25 the effects on the motor and cognition functions of BICAL rats treated with/without
26 EPC-CM or EPC-CM+MIF Ab with rotarod test and the novel object recognition

1 (NOR) assay, respectively. EPC-CM treatment reduced both motor coordination
2 deficits and recognition memory impairment after BICAL, which were abolished by
3 MIF Ab co-treatment (Figure 5D-E). These data indicated that EPC-CM is a potential
4 cell-free therapy for CCI and MIF is the key factor in EPC-CM that promotes vascular
5 repair.

6

7 **MIF promotes angiogenesis and anti-senescence by activating the AKT pathway**

8 Having established the role of MIF in promoting angiogenesis and anti-senescence by
9 *in vitro* system, we investigated the underlying mechanism. Previous studies
10 demonstrated that MIF increased angiogenesis and anti-senescence by mediating the
11 phosphatidylinositol 3' -kinase (PI3K) /AKT signaling pathway and mitogen-activated
12 protein kinase (MAPK)^{23, 26}. Therefore, we investigated the regulation of MIF or
13 EPC-CM on ERK1/2 and AKT activity in EPCs. EPCs treated with rMIF or EPC-CM
14 both showed significant increases in ERK1/2 and AKT phosphorylation, consistent
15 with previous studies (Figure 6A). Next, we detected ERK1/2 and AKT activity
16 with/without EPC-CM or rMIF treatment under OGD conditions. We found that
17 EPC-CM or rMIF treatment increased the AKT activity inhibited by OGD in ECs and
18 EPCs but not the ERK1/2 pathway (Figure 6B). The data indicated that AKT is the
19 critical pathway regulated by MIF to promote angiogenesis and anti-senescence. To
20 validate this hypothesis, we used a PI3K/AKT inhibitor, LY294002, to inhibit AKT
21 activity, and the inhibitory efficacy was confirmed by Western blotting (Figure 6B,
22 lane 5). As shown in Figure 6C and 6D, the tube formation and cell migration
23 promoted by rMIF treatment was abolished by AKT inhibitor co-treatment. In
24 addition, the anti-senescence effect mediated by rMIF was repressed by the AKT
25 inhibitor (Figure 6E). Taken together, these data suggested that activation of AKT
26 plays an important role in MIF-mediated neurologic repair by increasing angiogenesis

1 and anti-senescence in CCI.

1 Discussion

2 Chronic cerebral ischemia (CCI) is highly correlated with neurodegenerative
3 diseases and increases the mortality and disability rate in aging patients. Unfortunately,
4 effective therapies for CCI are limited. In this study, we showed that conditioned
5 medium derived from EPCs enhanced microcirculation, and cognitive and motor
6 functions of CCI animals. We further identified MIF, a pleiotropic cytokine, as a
7 critical factor in EPC-CM that exhibits angiogenesis and anti-senescence activities,
8 facilitating tissue recovery in both *in vivo* and *in vitro* studies. Mechanistically,
9 EPC-CM promoted angiogenesis and anti-senescence in EPCs and ECs through
10 MIF-mediated AKT activation. Overall, we demonstrated the therapeutic actions of
11 EPC-CM in vascular and brain functional improvement in experimental CCI model.

12 Vascular repair is critical for cerebral protection after ischemic insults. EPCs, as
13 the precursor cells of ECs, play a pivotal role in repairing injured vessels and
14 participate in endothelial regeneration^{27, 28}. Despite their attractiveness as a
15 therapeutic approach for ischemic diseases, challenges such as immunogenicity,
16 tumorigenic potential, and formation of emboli limit the clinical application of EPC
17 transplantation²⁹. The detailed mechanism by which EPCs contribute to vascular
18 repair is still unclear. There are two mechanisms by which EPCs promote vascular
19 repair. One is that EPCs migrate to the ischemic region and differentiate into ECs to
20 repair damaged vessels. The other is that the recruited EPCs secrete protective
21 paracrine factors to promote vascular repair³⁰. The latter mechanism, particularly
22 relevant for its stability, safety, and low immunogenicity, has gained prominence.
23 Evidence supports that EPC-mediated vascular repair via paracrine signaling,
24 activating resident ECs, is more critical than direct differentiation into damaged
25 vessels^{13, 31, 32}. In current study, we demonstrated that the administration of EPC-CM
26 facilitates vascular repair after BICAL. Furthermore, by analyzing the paracrine

1 factors of EPCs with a cytokine array, we focused on the role of MIF in
2 EPC-CM-mediated promotion of angiogenesis and cell survival after BICAL.

3 We used the BICAL model, a CCI animal model, to investigate the therapeutic
4 effects of EPC-CM. The cerebral ischemia induced by BICAL was validated by
5 microcirculation changes, including decrease of vascular density, regional blood flow,
6 and PbtO₂. The microcirculation changes were significantly ameliorated by the
7 administration of EPC-CM. Notably, EPC-CM treatment also rescued the impaired
8 motor and recognition functions in BICAL rats that suggested the role of EPC-CM in
9 neuronal protection after ischemic insults. The EPC-CM cytokine profile highlighted
10 MIF as a key factor in promoting vascular and neuronal repairs. Intriguingly,
11 MIF-specific antibody treatment inhibited the therapeutic effects mediated by
12 EPC-CM, reinforcing the pivotal role of MIF in vascular repair and neuronal
13 recovery.

14 MIF was first identified as an inflammatory cytokine and is now recognized as a
15 protective factor that involves in diverse physiological processes, including
16 angiogenesis, antioxidant activity, and cell survival^{19, 33}. Many studies have
17 demonstrated that MIF participates in the recovery of ischemic injuries³⁴⁻³⁷. MIF can
18 suppress oxidative stress by its redox activity or inhibit the transcription of P53 to
19 decrease cell apoptosis and senescence. MIF also promotes angiogenesis³⁸⁻⁴⁰.
20 However, other studies have reported that MIF aggravates ischemic damage^{41, 42}.
21 Inácio *et al.* found a smaller infarct size 7 days after stroke in MIF-knockout mice⁴².
22 These studies pointed out that MIF has different roles during ischemia, either
23 promoting neuronal recovery by inhibiting cell death or being harmful to neurons by
24 increasing the inflammatory response in ischemic region, and the mechanism
25 underlying the different roles of MIF is still unclear. One possibility is that higher
26 expression of MIF may activate broad signaling pathways and inflammation. In the

1 rodent permanent middle cerebral artery occlusion (MCAO) models, MIF showed
2 detrimental effects, which increased the permeability of blood brain barrier and the
3 infarction volume with 3.3 $\mu\text{g}/\text{kg}$ administration in Liu's study⁴³, whereas 0.9 ng MIF
4 injected into mice via the ventricle (final 120 ng/ml concentration) promoted
5 neurological recovery³⁴. The MIF concentration in EPC-CM was 12 ng/ml, and
6 treatment with 40 μl EPC-CM in BICAL rats showed significant protective effects in
7 our study, which is consistent with the low dose of MIF administered in the ischemic
8 stroke model³⁴.

9 Furthermore, we showed the therapeutic effects mediated by MIF by increasing
10 angiogenesis and anti-senescence in EPCs and ECs in the *in vitro* CCI model.
11 Secreted MIF activates multiple cellular signaling pathways by binding to the cellular
12 receptor CD74⁴⁴. The interaction of MIF with CD74, triggers various signaling
13 pathways, including the MAPK and PI3K/AKT pathways, which are crucial for
14 angiogenesis and anti-senescence^{23, 45}. In addition, MIF can bind to other receptors,
15 CXCR2 and CXCR4, to regulate cell proliferation, survival, angiogenesis, and
16 chemotaxis^{46, 47}. Here, we demonstrated that MIF promotes angiogenesis via
17 activation of the PI3K/AKT pathway to increase tube formation, cell migration, and
18 anti-senescence.

19 Cerebral small vessel impairment is related to various diseases, especially
20 cognitive dysfunction, vascular dementia, and stroke in elderly patients⁴⁸. This study
21 demonstrated the therapeutic effect of EPC-CM in animal model of CCI. Notably, in
22 prior research, CM was administered for multiple times^{9, 11}, while here, EPC-CM was
23 delivered once, 7 days following BICAL surgery, yet still exhibited a substantial
24 effect. This indicates that the EPC-CM used in our study had long-term effects on
25 EPC-mediated reendothelialization and neovascularization, which might be due to
26 EPC chemotaxis to the ischemic region mediated by MIF^{16, 49}. An intriguing avenue

1 for exploration is whether the vascular repair facilitated by EPC-CM could extend to
2 various ischemic diseases. Further investigation is needed to elucidate the detailed
3 mechanism of EPC-CM and MIF after ischemic events.

4 **Conclusion**

5 In conclusion, our study in an animal model highlighted the therapeutic potential
6 of EPC-CM for CCI. The pivotal role of MIF in angiogenesis and anti-senescence
7 through the activation of the PI3K/AKT pathway provides mechanistic insights into
8 the neuroprotective effects of EPC-CM. These findings hold promise for developing
9 novel therapies for cerebral ischemic diseases.

10

1 **Data Availability**

2 The data that support the findings of this study are available from the corresponding
3 authors upon reasonable request.

4

5 **Acknowledgments**

6 We thank the Animal Core Facility, Department of Medical Research, the Second and
7 the Third Core Labs, Department of Medical Research, National Taiwan University
8 Hospital for technical support during the study. YWC and KCW designed research,
9 data interpretation, writing and revising of the manuscript; YWC performed *in vitro*
10 experiments, acquired and analysis of the data; LYY, CRD, SCC, KWC, and YHC
11 performed animal experiments. ICC and WJC contributed to Western blotting. YTC,
12 YRC, HLH and CCC contributed to EPCs preparation. KCW and MFK contributed to
13 overall direction, funding acquisition and critical revision of the manuscript.

14

15

16 **Sources of Funding**

17 This work was supported by the Ministry of Science and Technology, Taiwan
18 (MOST 108-2314-B-002-086, 109-2314-B-002-124-, 110-2314-B-002-160-MY2, and
19 112-2314-B-002-240- to Dr. MF Kuo, and 108-2314-B-002-085-MY2,
20 110-2314-B-002-159, and 111-2314-B-002-254-MY2 to Dr. KC Wang).

21

22 **Disclosures**

23 The authors declare no competing interests.

24

25

1 **References**

- 2 1. Cechetti F, Pagnussat AS, Worm PV, Elsner VR, Ben J, da Costa MS, et al.
3 Chronic brain hypoperfusion causes early glial activation and neuronal death, and
4 subsequent long-term memory impairment. *Brain Res Bull.* 2012;87:109-116
- 5 2. Ciacciarelli A, Sette G, Giubilei F, Orzi F. Chronic cerebral hypoperfusion: An
6 undefined, relevant entity. *J Clin Neurosci.* 2020;73:8-12
- 7 3. Jing Z, Shi CZ, Zhu LH, Xiang YH, Chen PH, Xiong ZL, et al. Chronic cerebral
8 hypoperfusion induces vascular plasticity and hemodynamics but also neuronal
9 degeneration and cognitive impairment. *J Cerebr Blood F Met.*
10 2015;35:1249-1259
- 11 4. Matsuda H. Cerebral blood flow and metabolic abnormalities in Alzheimer's
12 disease. *Ann Nucl Med.* 2001;15:85-92
- 13 5. Werner N, Kosiol S, Schiegl T, Ahlers P, Walenta K, Link A, et al. Circulating
14 endothelial progenitor cells and cardiovascular outcomes. *New Engl J Med.*
15 2005;353:999-1007
- 16 6. Zhao YH, Yuan B, Chen J, Feng DH, Zhao B, Qin C, et al. Endothelial progenitor
17 cells: Therapeutic perspective for ischemic stroke. *Cns Neurosci Ther.*
18 2013;19:67-75
- 19 7. Kukumberg M, Zaw AM, Wong DHC, Toh CM, Chan BPL, Seet RCS, et al.
20 Characterization and functional assessment of endothelial progenitor cells in
21 ischemic stroke patients. *Stem Cell Rev Rep.* 2021;17:952-967
- 22 8. Loiola RA, Garcia-Gabilondo M, Grayston A, Bugno P, Kowalska A,
23 Duban-Deweer S, et al. Secretome of endothelial progenitor cells from stroke
24 patients promotes endothelial barrier tightness and protects against
25 hypoxia-induced vascular leakage. *Stem Cell Res Ther.* 2021;12

- 1 9. Wang T, Fang X, Yin ZS. Endothelial progenitor cell-conditioned medium
2 promotes angiogenesis and is neuroprotective after spinal cord injury. *Neural*
3 *Regen Res.* 2018;13:887-895
- 4 10. Schanzer A, Wachs FP, Wilhelm D, Acker T, Cooper-Kuhn C, Beck H, et al.
5 Direct stimulation of adult neural stem cells *in vitro* and neurogenesis *in vivo* by
6 vascular endothelial growth factor. *Brain Pathol.* 2004;14:237-248
- 7 11. Maki T, Morancho A, Martinez-San Segundo P, Hayakawa K, Takase H, Liang
8 AC, et al. Endothelial progenitor cell secretome and oligovascular repair in a
9 mouse model of prolonged cerebral hypoperfusion. *Stroke.* 2018;49:1003-1010
- 10 12. Rosell A, Morancho A, Navarro-Sobrino M, Martinez-Saez E,
11 Hernandez-Guillamon M, Lope-Piedrafita S, et al. Factors secreted by endothelial
12 progenitor cells enhance neurorepair responses after cerebral ischemia in mice.
13 *Plos One.* 2013;8
- 14 13. Xing Z, Zhao C, Liu HF, Fan YB. Endothelial progenitor cell-derived
15 extracellular vesicles: A novel candidate for regenerative medicine and disease
16 treatment. *Adv Healthc Mater.* 2020;9
- 17 14. Kong L, Wang Y, Wang H, Pan Q, Zuo R, Bai S, et al. Conditioned media from
18 endothelial progenitor cells cultured in simulated microgravity promote
19 angiogenesis and bone fracture healing. *Stem Cell Res Ther.* 2021;12:47
- 20 15. Zhou N, Wang L, Fu P, Cui Z, Ge Y, Jiang F, et al. Conditioned
21 medium-preconditioned EPCs enhanced the ability in oligovascular repair in
22 cerebral ischemia neonatal rats. *Stem Cell Res Ther.* 2021;12:118
- 23 16. Wang KC, Yang LY, Lee JE, Wu V, Chen TF, Hsieh ST, et al. Combination of
24 indirect revascularization and endothelial progenitor cell transplantation
25 improved cerebral perfusion and ameliorated tauopathy in a rat model of bilateral
26 ica ligation. *Stem Cell Res Ther.* 2022;13:516

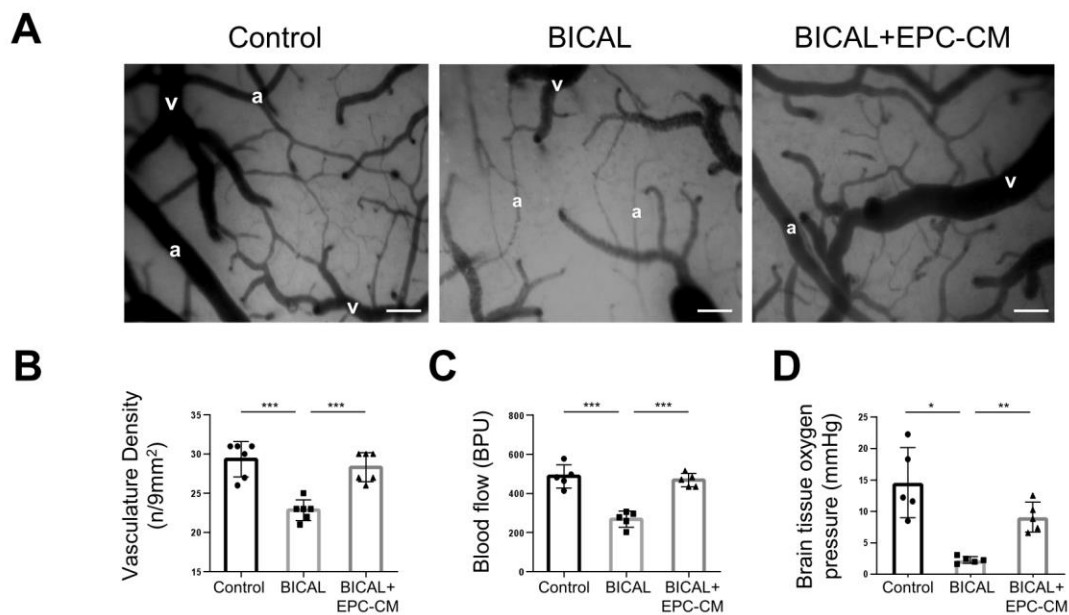
- 1 17. Kanzler I, Tuchscheerer N, Steffens G, Simsekylmaz S, Kanschalla S, Kroh A, et
2 al. Differential roles of angiogenic chemokines in endothelial progenitor
3 cell-induced angiogenesis. *Basic Res Cardiol.* 2013;108
- 4 18. Ohta S, Misawa A, Fukaya R, Inoue S, Kanemura Y, Okano H, et al. Macrophage
5 migration inhibitory factor (MIF) promotes cell survival and proliferation of
6 neural stem/progenitor cells. *J Cell Sci.* 2012;125:3210-3220
- 7 19. Song SS, Xiao ZP, Dekker FJ, Poelarends GJ, Melgert BN. Macrophage
8 migration inhibitory factor family proteins are multitasking cytokines in tissue
9 injury. *Cell Mol Life Sci.* 2022;79
- 10 20. Welford SM, Bedogni B, Gradin K, Poellinger L, Powell MB, Giaccia AJ. HIF1
11 alpha delays premature senescence through the activation of MIF. *Gene Dev.*
12 2006;20:3366-3371
- 13 21. De Backer D, Creteur J, Preiser JC, Dubois MJ, Vincent JL. Microvascular blood
14 flow is altered in patients with sepsis. *Am J Resp Crit Care.* 2002;166:98-104
- 15 22. Ennaceur A, Delacour J. A new one-trial test for neurobiological studies of
16 memory in rats .1. Behavioral-data. *Behav Brain Res.* 1988;31:47-59
- 17 23. Amin MA, Volpert OV, Woods JM, Kumar P, Harlow LA, Koch AE. Migration
18 inhibitory factor mediates angiogenesis via mitogen-activated protein kinase and
19 phosphatidylinositol kinase. *Circ Res.* 2003;93:321-329
- 20 24. Kang I, Bucala R. The immunobiology of mif: Function, genetics and prospects
21 for precision medicine. *Nat Rev Rheumatol.* 2019;15:427-437
- 22 25. Musi N, Valentine JM, Sickora KR, Baeuerle E, Thompson CS, Shen Q, et al. Tau
23 protein aggregation is associated with cellular senescence in the brain. *Aging Cell.*
24 2018;17
- 25 26. Xia WZ, Hou M. Macrophage migration inhibitory factor rescues mesenchymal
26 stem cells from doxorubicin-induced senescence though the PI3K-AKT signaling

- 1 pathway. *Int J Mol Med*. 2018;41:1127-1137
- 2 27. Balistreri CR, Buffa S, Pisano C, Lio D, Ruvolo G, Mazzei G. Are endothelial
3 progenitor cells the real solution for cardiovascular diseases? Focus on
4 controversies and perspectives. *Biomed Res Int*. 2015;2015
- 5 28. Schuh A, Liehn EA, Sasse A, Hristov M, Sobota R, Kelm M, et al.
6 Transplantation of endothelial progenitor cells improves neovascularization and
7 left ventricular function after myocardial infarction in a rat model. *Basic Res*
8 *Cardiol*. 2008;103:69-77
- 9 29. Herberts CA, Kwa MSG, Hermsen HPH. Risk factors in the development of stem
10 cell therapy. *J Transl Med*. 2011;9
- 11 30. Li YF, Ren LN, Guo G, Cannella LA, Chernaya V, Samuel S, et al. Endothelial
12 progenitor cells in ischemic stroke: An exploration from hypothesis to therapy. *J*
13 *Hematol Oncol*. 2015;8
- 14 31. Wang J, Chen S, Bihl J. Exosome-mediated transfer of ACE2
15 (angiotensin-converting enzyme 2) from endothelial progenitor cells promotes
16 survival and function of endothelial cell. *Oxid Med Cell Longev*.
17 2020;2020:4213541
- 18 32. Wang JJ, Chen SZ, Zhang WF, Chen YF, Bihl JC. Exosomes from
19 miRNA-126-modified endothelial progenitor cells alleviate brain injury and
20 promote functional recovery after stroke. *Cns Neurosci Ther*. 2020;26:1255-1265
- 21 33. Chatterjee M, Borst O, Walker B, Fotinos A, Vogel S, Seizer P, et al. Macrophage
22 migration inhibitory factor limits activation-induced apoptosis of platelets via
23 CXCR7-dependent AKT signaling. *Circ Res*. 2014;115:939-+
- 24 34. Kim JA, Kim YY, Lee SH, Jung C, Kim MH, Kim DY. Neuroprotective effect of
25 macrophage migration inhibitory factor (MIF) in a mouse model of ischemic
26 stroke. *Int J Mol Sci*. 2022;23

- 1 35. Chang MC, Park CR, Rine SH, Shim WH, Kim DY. Early treadmill exercise
2 increases macrophage migration inhibitory factor expression after cerebral
3 ischemia/reperfusion. *Neural Regen Res.* 2019;14:1230-1236
- 4 36. Zhang S, Zis O, Ly PTT, Wu YL, Zhang ST, Zhang MM, et al. Down-regulation
5 of MIF by NF kappa B under hypoxia accelerated neuronal loss during stroke.
6 *Faseb J.* 2014;28:4394-4407
- 7 37. Stoppe C, Averdunk L, Goetzenich A, Soppert J, Marlier A, Kraemer S, et al. The
8 protective role of macrophage migration inhibitory factor in acute kidney injury
9 after cardiac surgery. *Sci Transl Med.* 2018;10
- 10 38. Amin MA, Kumar P, Connors MA, Volpert OV, Koch AE. Migration inhibitory
11 factor mediates angiogenesis via phosphatidylinositol 3-kinase (PI3K) and
12 mitogen activated protein kinase (P38). *Faseb J.* 2002;16:A89-A89
- 13 39. Cui JJ, Zhang FY, Wang YS, Liu JJ, Ming X, Hou JB, et al. Macrophage
14 migration inhibitory factor promotes cardiac stem cell proliferation and
15 endothelial differentiation through the activation of the PI3K/AKT/mTOR and
16 AMPK pathways. *Int J Mol Med.* 2016;37:1299-1309
- 17 40. Munaut C, Boniver J, Foidart JM, Deprez M. Macrophage migration inhibitory
18 factor (MIF) expression in human glioblastomas correlates with vascular
19 endothelial growth factor (VEGF) expression. *Neuropath Appl Neuro.*
20 2002;28:452-460
- 21 41. Wang CW, Ma PJ, Wang YY, Yang M, Su LL, Wang S, et al. Serum level of
22 macrophage migration inhibitory factor predicts severity and prognosis in
23 patients with ischemic stroke. *Cytokine.* 2019;115:8-12
- 24 42. Inacio AR, Ruscher K, Leng L, Bucala R, Deierborg T. Macrophage migration
25 inhibitory factor promotes cell death and aggravates neurologic deficits after
26 experimental stroke. *J Cereb Blood Flow Metab.* 2011;31:1093-1106

- 1 43. Liu YC, Tsai YH, Tang SC, Liou HC, Kang KH, Liou HH, et al. Cytokine MIF
2 enhances blood-brain barrier permeability: Impact for therapy in ischemic stroke.
3 *Sci Rep-Uk*. 2018;8
- 4 44. Leng L, Metz CN, Fang Y, Xu J, Donnelly S, Baugh J, et al. MIF signal
5 transduction initiated by binding to CD74. *J Exp Med*. 2003;197:1467-1476
- 6 45. Palumbo S, Tsai TL, Li WJ. Macrophage migration inhibitory factor regulates
7 AKT signaling in hypoxic culture to modulate senescence of human
8 mesenchymal stem cells. *Stem Cells Dev*. 2014;23:852-865
- 9 46. Bernhagen J, Krohn R, Lue H, Gregory JL, Zerneck A, Koenen RR, et al. MIF is
10 a noncognate ligand of CXC chemokine receptors in inflammatory and
11 atherogenic cell recruitment. *Nat Med*. 2007;13:587-596
- 12 47. Guo X, Xu SG, Gao X, Wang J, Xue H, Chen ZH, et al. Macrophage migration
13 inhibitory factor promotes vasculogenic mimicry formation induced by hypoxia
14 via CXCR4/AKT/EMT pathway in human glioblastoma cells. *Oncotarget*.
15 2017;8:80358-80372
- 16 48. Gao Y, Li D, Lin JW, Thomas AM, Miao JY, Chen D, et al. Cerebral small vessel
17 disease: Pathological mechanisms and potential therapeutic targets. *Front Aging*
18 *Neurosci*. 2022;14
- 19 49. Simons D, Grieb G, Hristov M, Pallua N, Weber C, Bernhagen J, et al.
20 Hypoxia-induced endothelial secretion of macrophage migration inhibitory factor
21 and role in endothelial progenitor cell recruitment. *J Cell Mol Med*.
22 2011;15:668-678
- 23
24

1 Figures with Figure Legends



2

3

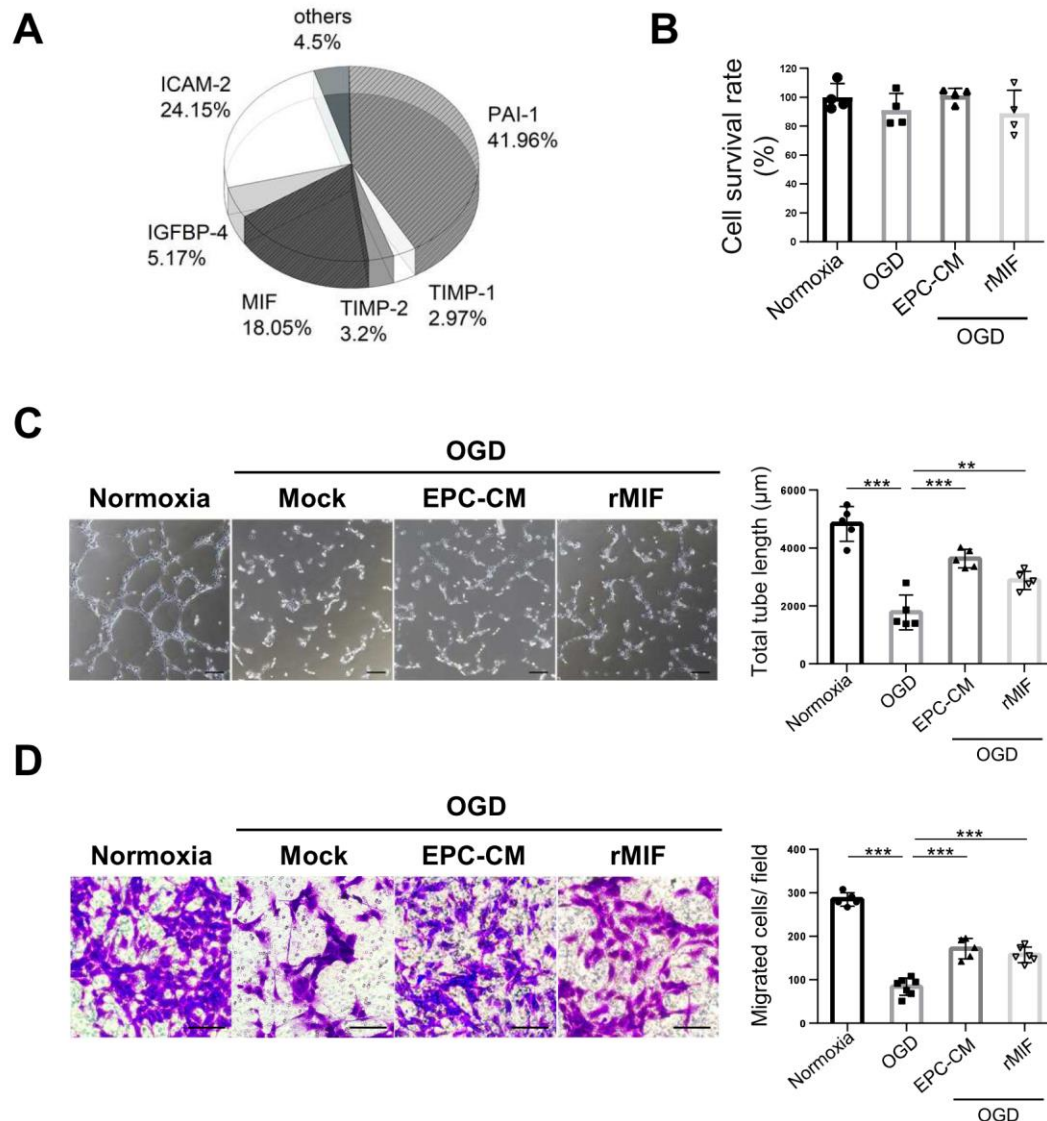
4

5 **Fig.1 EPC-CM treatment rescues the vascular impairment induced in BICAL**
6 **rat.**

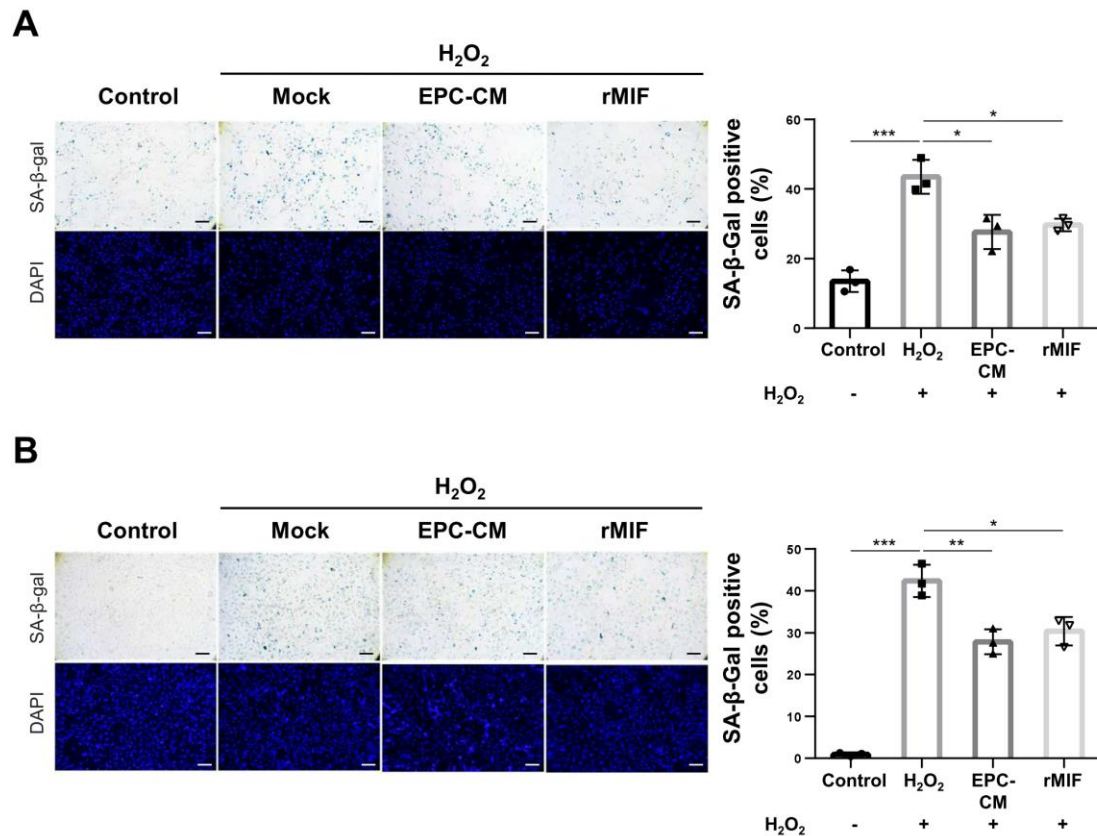
7 **A**, The artery (a) and vein (v) were observed on the brain surface by the videoscopic
8 view. The microcirculation on the cortical surface was significantly decreased in
9 BICAL-rat. Scale bar = 50 μ m. **B**, The effects of EPC-CM after BICAL on the
10 cerebral microvasculature density was quantified by using a CAM1 capillary
11 anemometer. **C** and **D**, The effects of EPC-CM on the microvascular system after
12 BICAL were evaluated by regional blood flow (**C**) and the partial pressure of brain
13 tissue oxygen (PbtO₂) (**D**). Data was showed as the mean \pm SD, and analyzed using
14 by One-way ANOVA. * $p < 0.05$, ** $p < 0.01$, *** $p < 0.001$, n = 5–6 in each
15 experiment.

16

17



1
2 **Fig2. Both EPC-CM and MIF protein promote the angiogenesis ability in**
3 **OGD-treated endothelial cells**
4 **A**, Cytokine profile in the EPC-CM was determined using Quantitative Cytokine
5 Quantibody Human Array 4000 (RayBiotech, Norcross, GA). **B**, The cell survival
6 ratio of the OGD-treated HUVEC cells with/without EPC-CM or recombinant MIF
7 treatment was detected by CCK-8 assay at OD 450nm and normalized with normoxia
8 group. **C**, Representative images exhibited the tube formation in HUVEC cells with
9 different treatments (left panel), and the average total length of tubes was
10 quantitatively analyzed by 5 fields randomly (right panel). **D**, Representative images
11 of the crystal violet staining of the HUVECs passed through the transwell membrane
12 (left panel). The migrated cell numbers were quantitatively analyzed by 6 fields
13 randomly (right panel). (C), (D) Scale bar = 100 μm. Data was showed as the mean ±
14 SD, and analyzed using by One-way ANOVA ** $p < 0.01$, *** $p < 0.001$.

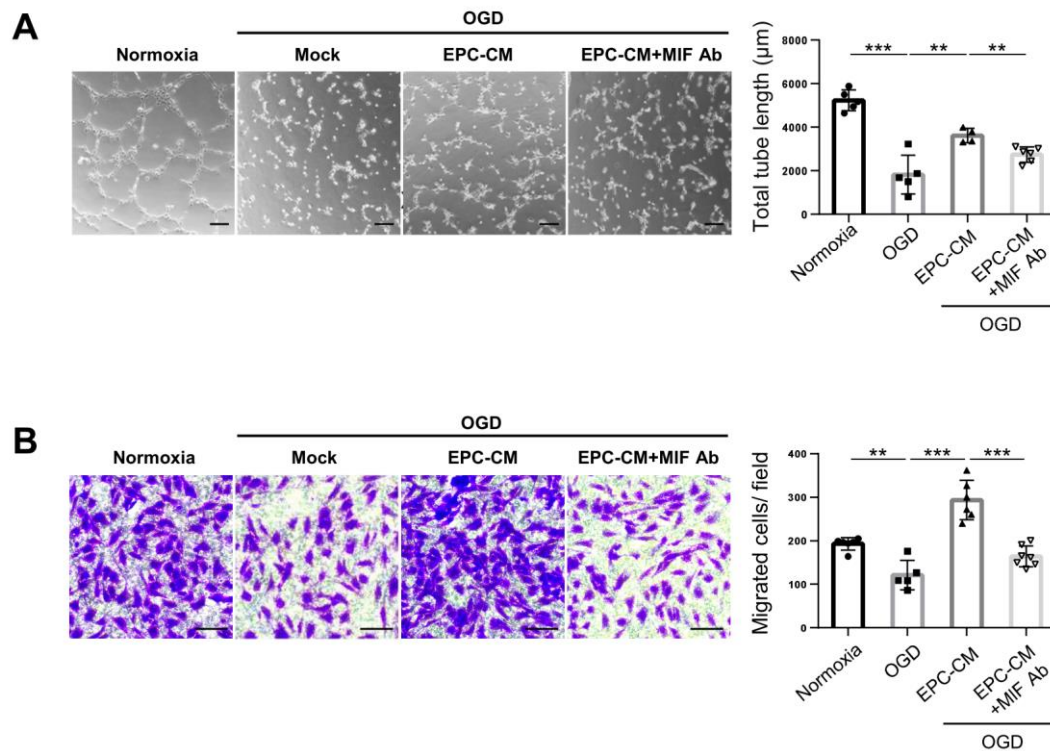


1

2 **Fig 3. Both EPC-CM and MIF protein protect against the H₂O₂-induced**
 3 **senescence of ECs and EPCs**

4 **A and B**, Representative bright micrographs of SA-β-gal staining of H₂O₂-treated
 5 cells. Senescence of the young EPCs (**A**) or the HUVECs (**B**) (passage <10) was
 6 induced by H₂O₂ treatment, followed with EPC-CM (20%) or recombinant MIF
 7 protein (100 ng/ml) treatment (left panel). The senescence ratio was quantitatively
 8 analyzed of the SA-β-gal positive cells normalized with DAPI staining. The data was
 9 compared with H₂O₂ group (right panel). Scale bar = 100 μm. Data was showed as
 10 the mean ± SD, and analyzed using by One-way ANOVA. * *p* < 0.05, ** *p* < 0.01, ***
 11 *p* < 0.001.

12

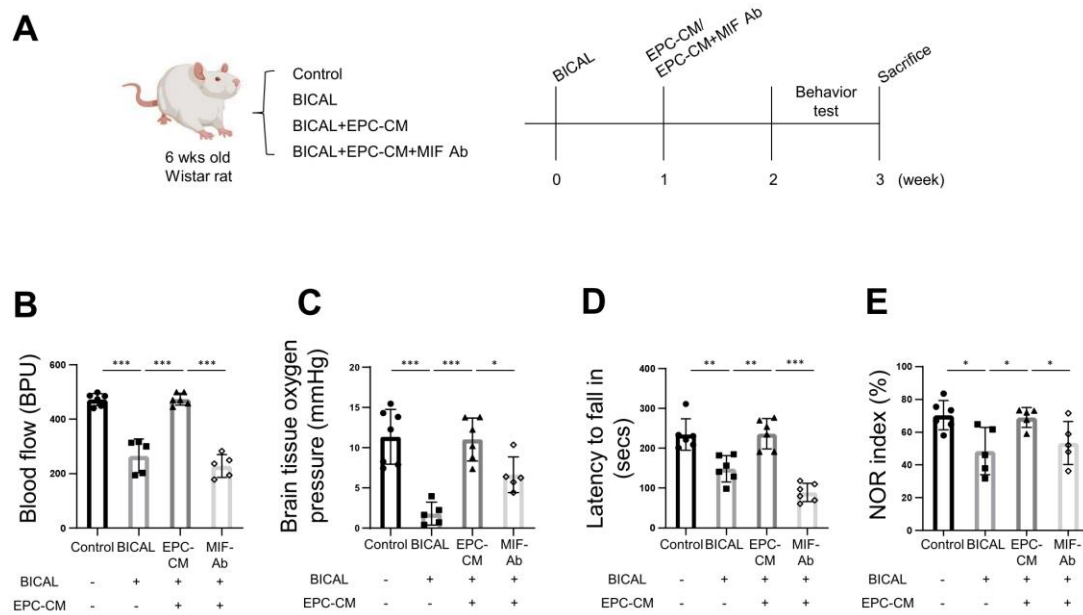


1

2 **Fig 4. Neutralization of MIF repressed the angiogenesis mediated by EPC-CM**
3 **treatment in vitro**

4 **A**, Representative images of tube formation was examined by Matrigel assay (left
5 panel). The total tube length in five random fields was quantified by MetaMorph
6 software and showed as bar graph (right panel). Scale bar = 100 µm. **B**, Determination
7 of the HUVECs passed through the transwell membrane stained with the crystal violet
8 (left panel). The migrated cell numbers were quantitative analyzed by 6 fields
9 randomly (right panel). Scale bar = 100 µm. Data was showed as the mean ± SD, and
10 analyzed using by One-way ANOVA. ** $p < 0.01$, *** $p < 0.001$.

11

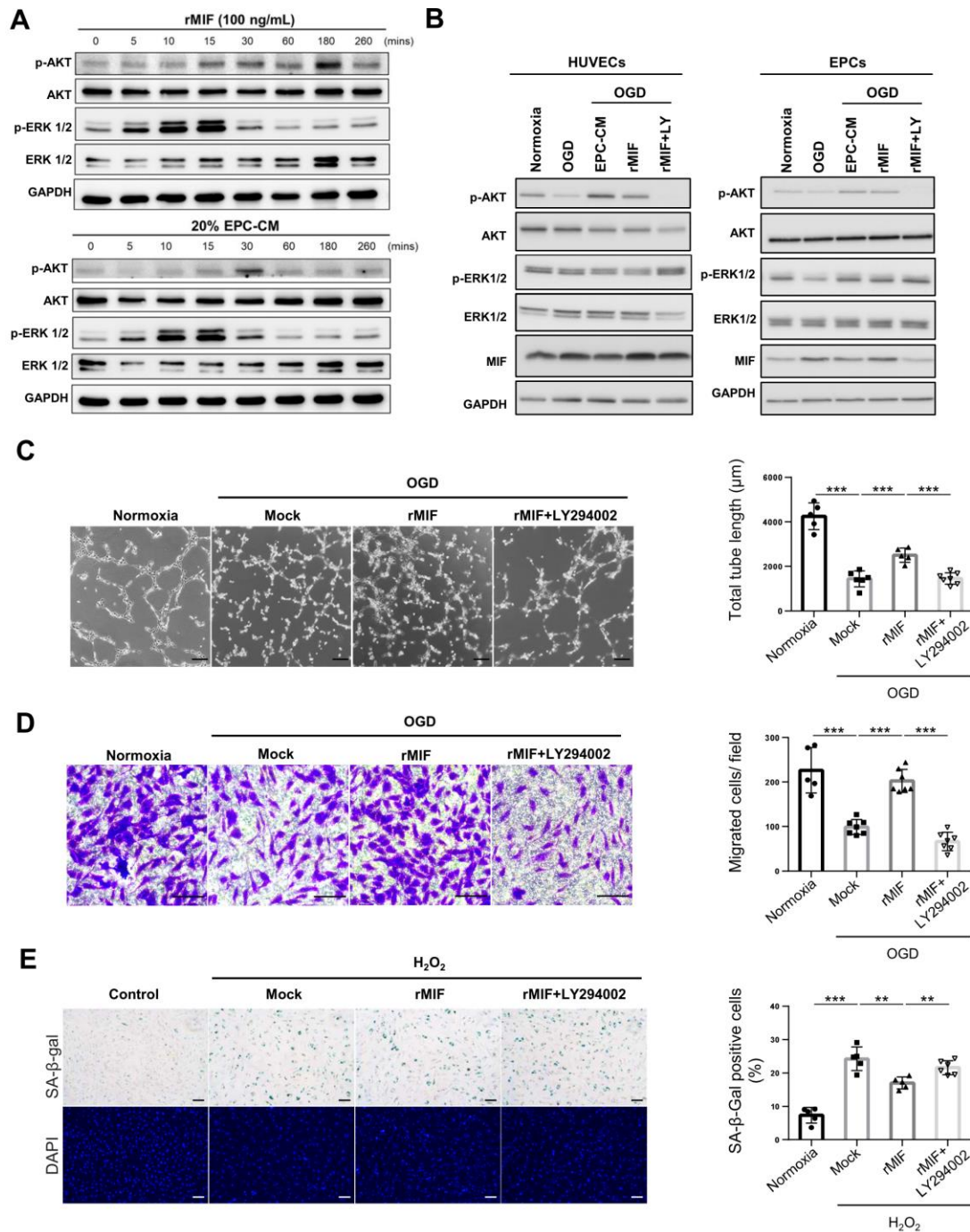


1

2 **Fig 5. MIF is the key factor in the EPC-CM to promote vascular repair and**
 3 **protects the motor function and cognition after BICAL.**

4 **A**, The schematic representation of the experimental process. **B** and **C**, Determination
 5 of the vascular function of BICAL-rat treated with EPC-CM or EPC-CM+MIF Ab by
 6 analyzed the regional blood flow (**B**) or the partial pressure of brain tissue oxygen
 7 ($PbtO_2$) (**C**) ($n=5$ in each group). **D**, The effects of EPC-CM and EPC-CM+MIF Ab
 8 on the motor function was evaluated by rotarod test ($n=6$). **E**, The recognition
 9 memory function in BICAL rat treated with/without EPC-CM or the EPC-CM+MIF
 10 Ab was detected by NOR test. The duration of time spent exploring the novel object
 11 was normalized with total time spent exploring both objects ($n>5$). Data was showed
 12 as the mean \pm SD, and analyzed using by One-way ANOVA. * $p < 0.05$, ** $p < 0.01$,
 13 *** $p < 0.001$.

14



1

2

3 **Fig 6. MIF promotes the angiogenesis and anti-senescence via activating the AKT**
4 **pathway**

5 **A**, Determination the AKT and ERK1/2 activity upon the treatment of EPC-CM or
6 recombinant MIF protein in different time points in the EPCs. The EPCs were treated
7 with rMIF (100 ng/ml) or EPC-CM (20%) for the indicated time and harvested the
8 cell lysates for Western blotting analysis. **B**, Detection of the AKT and ERK1/2
9 activity in OGD-treated cells incubated with EPC-CM, or rMIF, or rMIF+LY294002.

1 HUVECs (left panel) or EPCs (right panel) were incubated with/without EPC-CM
2 (20%), or rMIF (100ng/ml), or the rMIF+LY294002 (5nM) at 0.5 % O₂ incubator for
3 24 hrs. The cell lysates were collected to detect the AKT and ERK1/2 activity by
4 using the Western analysis. **C**, Representative images of the tube formation of the
5 OGD-treated cells incubated with different chemicals (left panel). The average total
6 tube length of five random fields was quantified and showed as bar graph (right panel).
7 Scale bar = 100 μm. **D**, Representative images of the HUVECs passed through the
8 transwell membrane stained with crystal violet (left panel). The migrated cell numbers
9 were quantitative analyzed by 6 random fields (right panel). Scale bar = 100 μm. **E**,
10 Images of the SA-β-gal staining of H₂O₂-induced senescent cells treated with different
11 chemicals in HUVEC cells. The senescence ratio was the SA-β-gal positive cells
12 normalized with the DAPI in 6 independent fields. The data was compared with the
13 H₂O₂ group (right panel). Scale bar = 100 μm, Data was showed as the mean ± SD,
14 and analyzed using by One-way ANOVA. ** $p < 0.01$, *** $p < 0.001$.
15