

1 **Cost-benefit analysis of a multicomponent breastfeeding**
2 **promotion and support intervention in a developing country**

3 Maya Basbous¹, MS, Nadine Yehya², PhD, Nisreen Salti³, PhD, Hani Tamim^{4,5}, PhD, Mona
4 Nabulsi^{6*}, MD, MS

5 ¹ The Scholars in HeAlth Research Program, Faculty of Medicine, American University of
6 Beirut, Beirut-Lebanon

7 ²Department of Public Affairs and Marketing, UC Davis, USA

8 ³Department of Economics, Faculty of Arts and Sciences, American University of Beirut, Beirut-
9 Lebanon

10 ⁴Department of Internal Medicine, Faculty of Medicine, American University of Beirut, Beirut-
11 Lebanon

12 ⁵College of Medicine, Alfaisal University, Riyadh, Saudi Arabia

13 ⁶Department of Pediatrics and Adolescent Medicine, American University of Beirut, Beirut-
14 Lebanon

15

*Corresponding Author:

16 Dr. Mona Nabulsi

17 Department of Pediatrics and Adolescent Medicine

18 American University of Beirut Medical Center, Beirut-Lebanon

19 P.O. Box: 113-6044/C8; Telephone: 9611350000

20 **Abstract**

21 **Background:** Studies evaluating breastfeeding promotion and support interventions suggest
22 some economic benefits. This study assessed the direct and indirect costs of a multicomponent
23 breastfeeding promotion and support intervention during the first two years of the infant's life.

24 **Methods:** This is a cost-benefit analysis of data generated from a randomized controlled trial
25 that aimed at investigating whether provision of a multicomponent breastfeeding promotion and
26 support intervention to Lebanese mothers in the first six months postpartum would improve
27 breastfeeding rates compared to standard obstetric and pediatric care. Data on 339 participants
28 included information on maternal socio-demographics and health, infant nutrition and health, and
29 direct and indirect costs of the intervention. The primary outcome was the benefit-cost ratio
30 (BCR) of the intervention at one, six, 12, and 24 months. Secondary outcomes included the
31 overall costs of infant nutrition and infant-mother dyad health costs during the first two years.
32 Multiple linear regression models investigated the effect of the multicomponent intervention
33 (independent variable) on the overall infant nutrition cost and the overall mother-infant health
34 costs (as dependent variables), adjusting for monthly income and number of children
35 (confounders) at different time points in the first two years. Similar regression models
36 investigated the association between infant nutrition type (exclusive breastfeeding, mixed
37 feeding, artificial milk) and infant nutrition costs and infant-mother health costs. Intention to
38 treat analyses were conducted using SPSS (version 24). Statistical significance was set at a *p*-
39 value below 0.05.

40 **Results:** The prevalence of *Exclusive/Predominant* breastfeeding among participants declined
41 from 51.6% in the first month to 6.6% at the end of second year. The multicomponent
42 breastfeeding intervention incurred 485 USD more in costs than the control group during the first

43 six months but was cost-efficient by the end of the first year (incremental net benefits of 374
44 USD; BCR=2.44), and by the end of the second year (incremental net benefits of 472 USD;
45 BCR=2.82). In adjusted analyses, the intervention was significantly associated with fewer infant
46 illness visits in the first year ($p=0.045$). Stratified analyses by the type of infant nutrition revealed
47 that infants who were on *Exclusive/Predominant*, or *Any Breastfeeding* had significantly more
48 favorable health outcomes at different time points during the first two years ($p<0.05$) compared
49 to infants receiving *Artificial Milk* only, with health benefits being highest in the
50 *Exclusive/Predominant* breastfeeding group. Moreover, *Exclusive/Predominant* and *Any*
51 *Breastfeeding* had significantly lower costs of infant illness visits, hospitalizations, and infant
52 medications during the two years ($p<0.05$), but had additional cost for maternal non-routine
53 doctor visits due to breastfeeding (all p values <0.05). Whereas the overall cost (direct and
54 indirect) during the first six months was significantly lower for the *Exclusive/Predominant*
55 breastfeeding infants ($p=0.001$), they were similar in infants on *Mixed Feeding* or *Artificial Milk*.

56 **Conclusions:** Breastfeeding is associated with significant economic and infant health
57 benefits in the first two years. In the context of the current economic crisis in Lebanon, this study
58 provides further evidence to policymakers on the need to invest in national breastfeeding
59 promotion and support interventions.

60

61 **Keywords**

62 Breastfeeding, cost-benefit analysis, health costs, infant health, Lebanon.

63

64

65 **Introduction**

66 Breast milk is the ideal nutrition for preterm and term infants that ensures healthy growth
67 and development of infants and young children [1]. Breastfeeding (BF) has many nutritional and
68 developmental benefits for children with health benefits extending to their mothers and to the
69 society at large [2-5]. The World Health Organization (WHO) recommends exclusive
70 breastfeeding (EBF) from the first hour after birth until the first six months of life, and the
71 continuation of BF until two years of age with nutritious complementary foods [6]. Despite this
72 recommendation, the rates of early initiation of BF within the first hour of birth and the rates of
73 EBF in the first two days of life were suboptimal in many countries [7]. Moreover, the overall
74 EBF rate in infants below five months of age in the world averages 48% with the rates in low-
75 middle income countries (LMICs) varying between 32% and 61% [7].

76 In Lebanon, the prevalence of EBF is low, estimated at 58.3% in infants less than one
77 month and 15% in infants below five months of age [8]. Moreover, the rates of early BF
78 initiation and BF continuation until one year of age were low at 41% and 27.1%, respectively [9,
79 10]. Studies from Lebanon identified several barriers to the practice of BF, such as societal
80 misconceptions about BF, the lack of lactation specialists, the lack of social support for
81 breastfeeding mothers, and the absence of national programs that promote BF practices on
82 maternity wards or in the community [11-13]. The Lebanese government led efforts to improve
83 BF practices in the country through establishing a national committee on the nutrition of infants
84 and young children, organizing national campaigns to promote BF, regulating the marketing of
85 breast milk substitute products for infants through law No. 47/2008, and introducing the Baby-
86 Friendly Hospital Initiative (BFHI). Despite these efforts, the rates of BF did not rise, and only
87 7% of Lebanese hospitals were designated as baby-friendly [14].

88 In response to the low national breastfeeding rates and societal barriers to breastfeeding,
89 we conducted a multicenter, two parallel-arm, single-blind multicomponent BF promotion and
90 support trial that compared the effect of provision of a package consisting of prenatal BF
91 education, professional lactation support and peer support for up to six months postpartum on
92 six-month EBF rate of women in the community, in comparison to standard medical care. The
93 multicomponent BF intervention resulted in a significantly higher EBF rate in the experimental
94 group compared to the control group (adjusted OR=2.02; 95% CI: 1.20-3.39) [15]. In this study,
95 we assessed the overall costs (direct and indirect) and benefits of this multicomponent BF
96 intervention at different time points during the first two years of the infant's life. This is a timely
97 study as Lebanon is currently suffering from a severe economic crisis, with increasing rates of
98 poverty and rapid drops in the purchasing power for large segments of its population [16].
99 Evidence from previous economic evaluations of BF promotion and/or support interventions that
100 were conducted in developing and developed countries reveal that BF may have economic
101 benefits. However, none of the studies looked at whether the economic effect persisted beyond
102 the initial few months postpartum, took into consideration all childhood and maternal illnesses,
103 or included a detailed breakdown of the direct and indirect costs related to BF [17-20]. In this
104 study, we aimed at bridging this knowledge gap by assessing the direct and indirect costs of our
105 multicomponent BF intervention at one, three, six, twelve-, and 24-months postpartum, by
106 including infant and maternal illnesses during these periods.

107

108 **Materials and methods**

109 **Study design**

110 This is a cost-benefit analysis of data generated from a multi-center, two-arm, single-
111 blind randomized controlled trial (RCT) that aimed to investigate whether the provision of a
112 multi-component BF promotion and support intervention to mothers in the community during the
113 first six months postpartum would improve BF rates, as compared to standard obstetric and
114 pediatric care. The trial was conducted between December 6, 2013 and January 21, 2016. All
115 participants provided written informed consent. The intervention consisted of three components:
116 prenatal BF education, peer support, and professional lactation support. Details of the trial
117 procedures and findings are described in the trial protocol [21] and report [15]. Briefly, prenatal
118 BF education consisted of at least one antenatal BF education session, provision of an
119 educational pamphlet, and video about BF to raise participants' BF knowledge. Peer support was
120 provided to the participants by trained lay mothers from the community via scheduled telephone
121 calls and hospital/home visits for six months postpartum to strengthen the mothers' social
122 networks and support. Professional lactation support was provided by certified lactation experts
123 through postpartum hospital and home visits for six months postpartum to improve maternal BF
124 skills and efficacy. The control group received standard postpartum obstetric and pediatric care
125 provided by hospital nurses and pediatricians.

126 **Participants**

127 Participants were mothers who participated in the breastfeeding trial and completed at
128 least one month of follow up (n=339). They were recruited from the antenatal clinics of two
129 healthcare centers in Beirut, Lebanon. After obtaining written informed consent, participants
130 were randomly assigned to an experimental group (n=160) and a control group (n=179).

131 Inclusion criteria were healthy pregnant women who were in their first or second trimester of
132 pregnancy and who planned to breastfeed after delivery. Women with any chronic medical
133 condition, abnormal fetal screen, twin gestation, no intention to breastfeed, delivery prior to 37
134 weeks of gestation, were past the second trimester of pregnancy, or residing outside Lebanon
135 were excluded [15, 21].

136 **Definitions**

137 In this cost-benefit analysis study, we grouped the infants according to the type of milk
138 they received for nutrition during the first six months of life. Nutrition group types were
139 *Exclusive Breastfeeding*, *Predominant Breastfeeding*, *Mixed Feeding*, *Any Breastfeeding*,
140 *Exclusive Formula Feeding* (EFF), and *Any Formula Feeding* (Any FF).

- 141 - *EBF* was defined as feeding the infant human milk only without any additional food
142 or drink, not even water [6].
- 143 - *Predominant Breastfeeding* is feeding the infant human milk as the predominant
144 source of nutrition, but allowing water, water-based drinks, or a maximum of two
145 feedings of artificial milk in one week during the first six months.
- 146 - *Mixed Feeding* is feeding the infant both human milk and more than two feedings of
147 artificial milk per week.
- 148 - *Any BF* is feeding the infant human milk with or without artificial milk.
- 149 - *Any FF* is feeding the infant artificial milk with or without human milk.
- 150 - *EFF* is feeding the infant artificial milk exclusively.

151 **Data collection**

152 Data on the following variables were collected at months 1, 3, 6, 12, and 24 postpartum:

153 1) maternal variables: participant's allocation (experimental vs. control), age, employment
154 (Yes/No), number of living children, education, household monthly income, maternal non-
155 routine doctor visit relating to BF (Yes/No), number of maternal non-routine doctor visits due to
156 BF, cost of maternal non-routine doctor visits due to BF; 2) infant variables: type of infant
157 nutrition (*Exclusive/Predominant Breastfeeding, Mixed Feeding, EFF, Any FF, or Any BF*),
158 number of artificial milk bottles per day, volume of artificial milk per bottle, brand of artificial
159 milk formula, price of one can of formula, number of formula cans consumed per week, brand of
160 water bottles used to prepare bottles of artificial milk, price of one water bottle, number of water
161 bottles consumed per week, infant's illness visit to a physician (Yes/No), number of infant illness
162 visits, diagnosis of infant illness at each visit, cost of each illness visit, third party payment for
163 illness visit (Yes/No), use of drugs for infant illness (Yes/No), cost of drugs per illness, infant
164 hospitalization for an illness (Yes/No), number of infant hospitalizations, diagnosis of infant
165 illness at each hospital admission, cost of each hospital admission, third party payment for infant
166 hospital admission (Yes/No), and cost of drugs used during/after hospitalization.

167 **Sample size**

168 The trial recruited 446 mothers with 222 participants allocated to the experimental group
169 and 224 to the control group. Of these, 339 participants had available data at one month and
170 hence constituted the sample of this cost-benefit analysis study. Figure 1 summarizes the
171 participants flow during the first 24 months of the trial.

172 **Outcomes**

173 The primary outcome of the study was the benefit-cost ratio (BCR) of the
174 multicomponent BF intervention at one month, six months, 12 months, and 24 months. The BCR
175 compares the discounted benefits of the intervention against its discounted implementation costs
176 at each time point.

177 Secondary outcomes included the differences between the experimental and control
178 groups in terms of: 1) the overall cost of infant nutrition, 2) the overall health costs for infant and
179 mother (summation of the costs of infant illness visits, infant hospitalizations, drugs used to treat
180 infants, and maternal non-routine consultations due to BF), during the following time periods:
181 first month; months two to three; months four to six; first six months together; months 7 to 12;
182 first 12 months together (first year of infant's life); months 13 to 24 (second year of infant's life);
183 and all 24 months together (first two years of infant's life). Other secondary outcomes were the
184 differences in the overall cost of infant nutrition and overall health costs of the infant-mother
185 dyad at the same time periods stratified by the infant nutrition group type, irrespective of
186 maternal allocation in the trial.

187 **Statistical analysis**

188 We summarized continuous variables as means and standard deviations (SD) and
189 categorical variables as counts and proportions. To calculate the BCR, we first calculated the Net
190 Present Value (NPV) of expenditures incurred by each participant in the trial (control and
191 experimental groups). To calculate the NPV, all expenses were discounted using an annual
192 discount rate (r) of 3%, which is appropriate for developing countries based on recommendations
193 for economic analyses [22, 23]. The NPV represents the present-day equivalent of the value of
194 the stream of expenditures over the duration of the observation period, considering the time

195 value of money (e.g., spending 100 USD today is not equivalent to spending 100 USD one year
196 from today) [22, 24]. Assuming that the direct and indirect expenditures were spent uniformly by
197 month, we used a monthly discount rate ($r/12$). Therefore, the NPV of the overall total cost for a
198 specific month is equal to:

$$199 \quad \frac{\text{Mean total cost during a specific month}}{\text{Discount Factor}}$$

200 The Discount Factor for any expense that happens i months from today is equal to: $(1 + \frac{r}{12})^i$.

201 Therefore, the formula of the BCR is as follows:

$$202 \quad \frac{\text{Mean NPV of total cost per participant in the control group} - \text{Mean NPV of total cost per participant in the experimental group}}{\text{NPV of the net implementation cost per participant in the experimental group}}$$

203 A BCR greater than 1 indicates that the intervention of interest is efficient and saves money
204 relative to the control. A ratio less than 1 indicates that the intervention is inefficient, and costs
205 more than it saves relative to the control.

206 We conducted multiple linear regression analyses to compare the experimental and
207 control groups with respect to the overall cost of infant nutrition, and the overall health costs for
208 infant and mother, adjusting for any baseline characteristic that was significantly different
209 between the two trial groups. These comparisons were done separately for month one, months
210 two to three, months four to six, all first six months, months 7 to 12, all first 12 months, months
211 13 to 24, and all 24 months. Moreover, we compared differences in infant illness visits and
212 hospitalizations between the experimental and control groups as dichotomous (Yes/No) and
213 continuous variables (frequency) using logistic and linear regressions, respectively. Similarly, we
214 compared these two variables in *EBF* vs. *Mixed Feeding* vs. *EFF* groups using Chi-square and
215 ANOVA for dichotomous and continuous variables, respectively.

216 With respect to the comparisons of infant nutrition costs and health costs of the infant-
217 mother dyads according to the infant nutrition group, we compared *EBF* vs. *Mixed Feeding* vs.
218 *EFF* using ANOVA; *EBF* vs. *Any FF*, and *Any BF* vs. *EFF* using the independent Student's *t*-
219 test. All statistical analyses were conducted as intention to treat analyses using SPSS (version 24).
220 Statistical significance was evaluated at a *p*-value below 0.05.

221

222 **Results**

223 **Baseline characteristics**

224 The flow of the participants in the breastfeeding trial is shown in the figure (Fig 1). Of
225 the 339 participants who completed one month of follow up in the trial, 50 participants either
226 withdrew or were lost to follow up by the end of the second year of trial. The baseline
227 characteristics of these 50 participants were not significantly different from the characteristics of
228 those who continued in the trial. The participants had a mean (*SD*) age of 29.5 (4.9) years, with
229 more than half (*n*=176, 52%) being employed, having a university-level education (*n*=267, 79%),
230 with at least one child (*n*=181, 53.4%), and a monthly household income above 1,000 USD
231 (*n*=229, 72%). A significantly higher proportion of women in the trial's experimental group were
232 primigravid (*p*<0.001) and had a higher monthly household income (*p*=0.003). Otherwise, the two
233 groups had similar baseline characteristics (Table 1).

234 **Fig 1. Participants' flow in the trial.**

235

236 **Table 1. Baseline demographic characteristics in the trial’s experimental and control**
 237 **groups.**

	Total (N=339)	Control (n=179)	Experimental (n=160)	p-Value
Continuous Variables	<i>Mean (SD)</i>	<i>Mean (SD)</i>	<i>Mean (SD)</i>	
Age (years)	29.5 (4.9)	29.3 (5.2)	29.6 (4.6)	0.550
Categorical Variables	<i>n (%)</i>	<i>n (%)</i>	<i>n (%)</i>	
Employment status				
Homemakers	163 (48.1)	90 (50.3)	73 (45.6)	0.392
Employed	176 (51.9)	89 (49.7)	87 (54.4)	
Number of living children				
0	158 (46.6)	65 (36.3)	93 (58.1)	<0.001
1+	181 (53.4)	114 (63.7)	67 (41.9)	
Education				
≤ High school	72 (21.2)	44 (24.6)	28 (17.5)	0.112
University	267 (78.8)	135 (75.4)	132 (82.5)	
Monthly household income (USD)¹				
≤ 1000	88 (27.8)	59 (34.7)	29 (19.7)	0.003
> 1000	229 (72.2)	111 (65.3)	118 (80.3)	

238

239

240

¹ Missing data for 22 participants

241

242

243 **Cost-benefit analysis**

244 The implementation cost of the multicomponent intervention was allocated to the
245 experimental group only. It included compensation for the lactation consultants (31,200 USD),
246 telephone charges and commuting of the support mothers (5,820 USD), salaries of three research
247 assistants (93,600 USD), the cost of the BF video production (8,500 USD), BF booklets and
248 pamphlets (1,500 USD), and the research assistants' commuting cost (1,500 USD). The
249 implementation cost per participant was 43.60 USD in the first month, and 261.61 USD for each
250 of the following time periods: 0 to 6 months (first six months of infant's life), 0 to 12 months
251 (first year of infant's life), and 0 to 24 months (first two years of infant's life).

252 In the unadjusted intention to treat analyses, the experimental group had a significantly
253 lower proportion of infants needing hospital admission during the period 7 to 12 months (5.6% in
254 the experimental vs. 12.7% in the control group; $p=0.035$), and a smaller number of doctor visits
255 for infant illnesses during the first 12 months (experimental: 2.22 ± 2.30 , control: 22.97 ± 3.10 ;
256 $p=0.016$), as compared to the control group. However, in the adjusted intention to treat analyses,
257 only the number of doctor visits for infant illnesses in the first 12 months remained statistically
258 significant ($p=0.045$). No other significant differences were found between the experimental and
259 the control groups at other time points with respect to infant and mother health outcomes, or to
260 the cost of the following: infant nutrition, doctor visits for infant illnesses, infant hospitalizations,

261 infant medications, maternal non-routine doctor visits due to BF, as well as overall total costs in
262 both unadjusted and adjusted analyses (S1 Table).

263 The results of the cost-benefit analysis of the intervention are shown in Table 2 at the
264 following time periods: first month, first six months, first year, and first two years of the infant's
265 life. After applying a discount rate of 3%, the intervention incurred 138 USD more in overall
266 costs per participant in the first month, and 485 USD more in overall costs per participant during
267 the first six months, relative to the control group. However, the intervention was cost-efficient by
268 the end of the first year (incremental net benefits of 374 USD; BCR = 2.44), and by the end of
269 the first two years (incremental net benefits of 472 USD; BCR = 2.82).

270 **Table 2. Findings of the cost-benefit analysis in the experimental and the control groups.**

	Month 0-1	Month 0-6	Month 0-12	Month 0-24
Cost difference¹	-94.88	-225.40	633.33	730.99
Net Implementation Costs	43.49	259.34	259.34	259.34
Net Benefits²	-138.37	-484.74	373.99	471.65
BCR³	-	-	2.44	2.82

271 ¹ Cost difference = Mean net present value per participant in the control group – mean net
272 present value per participant in the experimental group

273 ² Net benefits = Cost difference – Net implementation costs

274 ³ Benefit-Cost Ratio = $\frac{\text{Cost difference}}{\text{Net present value of the net Implementation cost per participant}}$
275

276 **Comparisons by the type of infant nutrition**

277 The prevalence of *Exclusive/Predominant BF* among trial participants decreased from
278 51.6% by the end of first month to 6.6% by the end of the second year. Similarly, *Mixed Feeding*

279 prevalence decreased from 43.1% to 1.4% during the same period. In contrast, prevalence of
280 *EFF* increased from 5.3% at month one to reach 92% by the end of two years (Table 3).

281 **Table 3. Types of infant nutrition at different time points during the first two years.**

Type of Infant Nutrition				
	EBF/Predominant BF ¹	Mixed Feeding ²	EFF ³	Total
TIME POINTS	<i>n</i> (%)	<i>n</i> (%)	<i>n</i> (%)	<i>N</i>
Month 1	175 (51.6)	146 (43.1)	18 (5.3)	339
Months 2 and 3	140 (42.7)	114 (34.8)	74 (22.6)	328
Months 4 to 6	105 (34)	81 (26.2)	123 (39.8)	309
Months 7 to 12	68 (22.6)	49 (16.3)	184 (61.1)	301
Months 13 to 24	19 (6.6)	4 (1.4)	264 (92)	287

282 ¹ EBF/Predominant BF refers to the group of infants who are exclusively breastfed or receiving,
283 in addition to breastmilk, a small quantity of formula milk (a maximum of two formula bottles
284 per week).

285 ² Mixed feeding refers to the group of infants receiving both breast milk and formula milk (more
286 than two bottles per week).

287 ³ EFF refers to the group of infants receiving formula milk exclusively.

288

289

290 *Exclusive/Predominant BF vs. Any FF*

291 Infants who were on *Exclusive/Predominant BF* had more favorable health outcomes at
292 different time points during the first two years than infants who were on *Mixed Feeding* or *EFF*.

293 The proportion of infants with illness-visits and hospitalizations in the first month was
294 significantly smaller in the *Exclusive/Predominant BF* group (14.9% vs. 26.9%, $p=0.007$; 3.4%

295 vs. 8.5%, $p=0.035$; respectively). Moreover, this group had fewer illness visits in the first three
296 months, and fewer hospitalizations during the first year (all p values <0.05). The overall cost

297 (direct and indirect) was significantly lower in the *Exclusive/Predominant BF* group during the
298 first six months ($p=0.001$). As expected, the cost of water and formula in the *Any FF* group was

299 significantly higher at all time points, whereas the costs related to infant health were significantly

300 lower in the *Exclusive/Predominant BF* group such as illnesses visits in the first month
301 ($p=0.001$), infant hospitalization during the first six months ($p=0.016$) and the second year
302 ($p<0.001$), infant medications during the first month ($p=0.017$), months 2 and 3 ($p=0.032$), and
303 second year ($p<0.001$). Cost of maternal non-routine doctor visits due to BF was significantly
304 higher in the *Exclusive/Predominant BF* group only during months 4 to 6 ($p=0.031$). Details of
305 the comparisons between the two groups are summarized in S2 Table.

306 *Any BF vs. EFF*

307 When comparing the groups of *Any BF* and *EFF*, *Any BF* was associated with a
308 significantly lower proportion of infants who had illness visits (24.4% vs. 36.5%, $p=0.04$) and
309 hospitalizations (2.4% vs. 10.8%, $p=0.004$) during the second and third months, and fewer
310 hospitalizations during the first six months (10.6% vs. 29.4%, $p=0.035$). Similarly, *Any BF* was
311 significantly associated with fewer number of infant hospitalizations during second and third
312 months ($p=0.027$), and during second year of the infant's life ($p<0.001$). As for costs, *EFF* had
313 significantly higher costs for water and formula at all time points. However, *Any BF* was
314 associated with significantly lower costs of infant hospitalizations during the second and third
315 months ($p=0.038$) and during the second year ($p<0.001$), as well as lower cost of infant
316 medications during the second year ($p<0.001$). *Any BF* was associated with higher cost of
317 maternal non-routine doctor visits due to BF during months 4 to 6 ($p=0.047$), in the first six
318 months ($p<0.001$), and in the first year ($p<0.001$). However, the overall cost was not
319 significantly different between the two groups at any time point. Further details of the
320 comparisons between *Any BF* and *EFF* groups are shown in S3 Table.

321 *Exclusive/Predominant BF vs. Mixed feeding vs. EFF*

322 The comparison of the three groups *Exclusive/Predominant BF*, *Mixed Feeding*, and *EFF*
323 showed a significant difference in the proportion of infants who had illness visits in the first
324 month being lowest in the *Exclusive/Predominant BF* group and highest in the *EFF* group
325 (14.9% vs. 25.3% vs. 38.9%, $p=0.009$). A similar trend was observed in the proportion of
326 hospitalized infants (3.4% vs. 7.5% vs. 6.7%, $p=0.039$) in the first month, and during the first six
327 months (6.9% vs. 12.2% vs. 29.4%, $p=0.033$), and in the number of infant illness visits in the
328 first month ($p=0.004$), number of infant hospitalizations at one month ($p=0.041$) and during the
329 first six months ($p<0.001$). Healthcare costs were lowest in the *Exclusive/Predominant* group and
330 highest in the *EFF*, specifically in infant illness visits at one month ($p<0.001$), infant
331 hospitalization during the first six months ($p=0.001$), and overall cost during the first six months
332 ($p<0.001$). The cost of water and formula was highest in the *EFF* group and lowest in the
333 *Exclusive/Predominant BF* group at all time points. Further details of the comparisons among the
334 three groups are shown in S4 Table.

335

336 **Discussion**

337 In this study, we conducted a cost-benefit analysis of a multicomponent BF promotion
338 and support intervention composed of peer support, professional lactation support, and BF
339 education. We found that although the intervention was not cost-efficient in the first six months
340 postpartum, it was cost-efficient at years one and two. The net monetary benefits of the
341 intervention were 2.44 times, and 2.82 times the costs of its implementation in year one and year
342 two, respectively. There are few studies in the literature that evaluated the cost-effectiveness of
343 breastfeeding promotion interventions that reported conflicting results. The differences in the

344 cost-effectiveness of the breastfeeding interventions of these studies may be due to differences in
345 their BF promotion interventions, study designs, durations of intervention delivery, and in the
346 outcomes used to report cost-effectiveness.

347 Chola et al. [25] assessed the cost-effectiveness of community-based peer counseling to
348 promote BF and reduce diarrhea-associated mortality and morbidity in Uganda, as compared to
349 health facility-based BF promotion. Home-based peer counseling doubled the 3-month BF
350 prevalence but was not cost-effective in averting diarrhea-associated disability adjusted life years
351 (DALYs) and had an incremental cost of 137 USD per mother-child pair at six months in
352 comparison to the health facility-based support. In contrast, our multicomponent BF promotion
353 intervention had a higher incremental cost of 485 USD per participant during the first six
354 months, which is explained by the additional costs of professional lactation support and BF
355 education resources that were delivered to mothers in the intervention group. However, our
356 multicomponent intervention was cost-beneficial at years one and two. To note, that there are
357 several differences between our study and that of Chola et al. Whereas we prospectively
358 collected data on all infant morbidities and maternal BF-associated morbidities over two years,
359 Chloe et al. estimated infant diarrhea-related costs based on reports from previous studies, and
360 for the first six months only. Moreover, our intervention had three BF promotion and support
361 components and not only peer support.

362 In another study, Frick et al. conducted a cost-benefit analysis of a breastfeeding support
363 intervention delivered by nurses and peer counselors (Breastfeeding Support Team) to low-
364 income breastfeeding women in Baltimore, Maryland [26]. The intervention included hospital
365 visits and three home visits by a community health nurse/peer counselor, in addition to telephone
366 contacts. The economic evaluation focused on whether the costs of intervention personnel (direct

367 costs only) would be offset by reducing health costs and formula costs. They found that the
368 direct intervention costs were partially offset by reducing medical care utilization and formula
369 feeding costs at weeks 4 to 8. The analysis, however, did not include indirect costs and was
370 limited to the first 12 weeks of the intervention. Walters et al. [5] analyzed the cost-benefit of a
371 modeled breastfeeding promotion strategy implemented in Vietnam at a national level and the
372 costs of NOT breastfeeding in seven countries in Southeast Asia. The modeled national
373 breastfeeding promotion strategy had a BCR of \$2.39 for every \$1 invested, which was
374 equivalent to a 139% return on investment. Moreover, this national strategy was estimated to
375 prevent 200 child deaths per year in Vietnam. Bland et al. conducted a non-randomized trial in a
376 high HIV prevalence area in South Africa to promote EBF for six months by offering home-
377 based BF counselling [27]. They reported high EBF rates among mothers who received the
378 intervention, as well as low rates of mastitis and other breastfeeding-associated health issues, and
379 lower risk of postnatal HIV transmission. The economic evaluation of this intervention was
380 assessed by Desmond et al. [28] under three different scenarios, if it were implemented at
381 provincial level: 1) implementation of the full intervention as in the protocol (rural areas: 10.4
382 home visits, urban areas: 10.4 clinic visits); 2) implementation of a simplified intervention with
383 less frequent pre-and post-natal visits and more clinic-based visits (rural: 4.2 home visits and 2
384 clinic visits, urban: 2 home visits and 4.2 clinic visits); 3) implementation of a basic intervention
385 which is entirely clinic-based (3 clinic visits for both rural and urban cohorts). The simplified
386 scenario was found to be the most efficient in terms of cost per additional month of EBF. The
387 cost-efficiency of the simplified scenario may be due to the lower number of visits as compared
388 to our intervention, which consisted of more home visits (days 1, 3, 7, and 15 post-hospital

389 discharge, and then monthly for six months postpartum). Hence, the higher number of home
390 visits in our intervention explains the lack of its cost-efficiency in the first six months.

391 Our intervention was also associated with a reduced number of infant hospitalizations and
392 doctor illness visits during the first year of life. However, this was not paralleled with reductions
393 in the costs of infant nutrition, infant illness visits, infant hospitalizations and medications, or
394 maternal non-routine doctor visits due to BF at any time point. Moreover, the difference in the
395 overall total costs between the experimental and the control groups was not statistically
396 significant. This may be attributed to the fact that only 22.4% of the participants in the
397 experimental arm complied with the three components of the intervention, which may have
398 attenuated the association between the breastfeeding intervention and health-related costs [15]. In
399 addition, the two trial groups differed in two baseline characteristics, namely parity, and
400 socioeconomic status that may potentially affect their compliance with the experimental
401 intervention. Wealth disparities have been shown to affect BF continuation, with poorer women
402 being 1.5 times more likely to BF for two years as compared to richer ones [29]. Similarly, the
403 six-month BF rate is less in first-time mothers than mothers who have at least one child (59% vs.
404 69%, $p < 0.001$) [30]. In our cohort, more women in the experimental group were primiparous and
405 had a higher monthly income. These differences may have contributed to less BF in this group
406 and to the attenuation of the differences in the overall total costs between the two groups.

407 Our study also revealed that, irrespective of maternal allocation in the trial, infants who
408 were on *Exclusive/Predominant BF* had less infant illness visits and hospitalizations, as well as
409 less health-related costs and overall cost in the first six months of their lives. For example, in the
410 first three months, we found a significant reduction in infant illness visits, hospitalizations, and
411 medication cost. Similarly, there was a reduction in infant hospitalizations and medication cost

412 between 12 and 24 months. However, *Exclusive/Predominant BF* was associated with an
413 increase in the cost of maternal non-routine visits due to BF between the 3rd and the 6th months.
414 This is an expected finding as BF women may experience BF-associated complications, such as
415 mastitis, engorgement, or sore nipples necessitating medical care. Interestingly, infants on any
416 BF also showed significant reductions in infant illness visits, hospitalizations, and associated
417 costs at different time points in the first two years, and a similar increase in the cost of maternal
418 non-routine doctor visits. These observed BF benefits in infants' health outcomes and its
419 associated cost savings are consistent with the literature. In a meta-analysis by Victora et al. [2],
420 breastfeeding was shown to be associated with significant protection against child infections and
421 other disorders, as well as reduced maternal risk for breast and ovarian cancers, and type 2
422 diabetes. Optimal breastfeeding may decrease under-five child mortality by 823,000 deaths and
423 prevent 20,000 maternal deaths from breast cancer each year. A cost-analysis study on the
424 burden of suboptimal breastfeeding in the United States concluded that \$13 billion could be
425 saved and 911 excess infant deaths could be prevented if 90% of US mothers exclusively
426 breastfeed for six months [31]. Another cost analysis study from the UK estimated that
427 supporting mothers to EBF for four months would save at least £11 million annually, and that
428 doubling the proportion of mothers breastfeeding for at least seven months would reduce
429 maternal breast cancer incidence and save at least £31 million each year, at 2009-2010 value
430 [32].

431 **Strengths and limitations**

432 Our findings are conservative in that we are missing many of the benefits of BF. The fact
433 that our study stopped at two years means we only captured some of the benefits of BF. To the
434 extent that the immunity acquired through BF continues to protect the child past age two years,

435 we are unable to measure that benefit. Another limitation is that the benefits are measured in
436 terms of physical health outcomes (absence of illness), whereas some of the benefits may be
437 cognitive and behavioral. A further limitation is the fact that trial participants were recruited
438 from two private hospitals in Beirut and were women who intended to BF. Therefore, our results
439 may not be generalizable to women in rural areas or to women who did not intend to breastfeed.
440 Moreover, only a small percentage of women complied with the three components of the
441 intervention, which may attenuate the difference in the cost-benefit analysis between the two trial
442 groups, especially that it was an intent-to treat analysis. We cannot exclude the potential for
443 information bias since the costs of infant nutrition and healthcare utilization were self-reported
444 and not based on invoices provided by the mothers. Finally, this study did not collect data on
445 maternal food consumption, maternal health problems not related to BF, use and cost of breast
446 milk pumps, and the cost of maternal absenteeism from work. The main strength of our study is
447 its prospective design which reduces recall bias relating to the accuracy of data on infant
448 nutrition and healthcare cost over the first two years of infant's life. Also, we collected data on
449 all infant non-routine health visits as well as maternal health care visits relating to BF-associated
450 problems.

451

452 **Conclusions**

453 Our multicomponent BF promotion and support intervention was associated with infant
454 health benefits as well as economic benefits that were noted during the first two years
455 postpartum. Moreover, exclusive, or partial BF was associated with significant infant-health and
456 economic benefits in the first six months postpartum. Hence, our findings suggest that any

457 intervention that increases the rate or duration of BF may be cost-beneficial. In the context of the
458 current economic crisis in Lebanon, this study provides further evidence to policymakers on the
459 need to invest in BF promotion and support interventions in Lebanon.

460

461 **Acknowledgements**

462 We are thankful to all our participants for their valuable contribution to our study. Author
463 Maya Basbous would like to acknowledge the training received under the Scholars in HeAlth
464 Research Program (SHARP) that was in part supported by the Fogarty International Center and
465 Office of Dietary Supplements of the National Institutes of Health (Award Number D43
466 TW009118). The content is solely the responsibility of the authors and does not necessarily
467 represent the official views of the National Institutes of Health.

468

469 **References**

- 470 1. Kramer MS, Kakuma R. The optimal duration of exclusive breastfeeding. Cochrane
471 Database of Systematic Reviews. 2012, Issue 8. Art. No.: CD003517. DOI:
472 10.1002/14651858.CD003517.pub2.
- 473 2. Victora CG, Bahl R, Barros AJD, França GVA, Horton S, Krasevec J, et al.
474 Breastfeeding in the 21st century: epidemiology, mechanism, and lifelong effect. Lancet.
475 2016;387:475-90.

- 476 3. Pokhrel S, Quigley MA, Fox-Rushby J, McCormick F, Williams A, Trueman P, et al.
477 Potential economic impacts from improving breastfeeding rates in the UK. Arch Dis
478 Child. 2015;100(4):334-340. doi: 10.1136/archdischild-2014-306701.
- 479 4. Victora CG, Horta BL, de Mola CL, Quevedo L, Pinheiro RT, Gigante DP, et al.
480 Association between breastfeeding and intelligence, educational attainment, and income
481 at 30 years of age: A prospective birth cohort study from Brazil. Lancet Glob Health.
482 2015;3(4):e199-205. doi: 10.1016/S2214-109X(15)70002-1.
- 483 5. Walters D, Horton S, Siregar AYM, Pitriyan P, Hajeebhoy N, Mathisen R, et al. The cost
484 of not breastfeeding in Southeast Asia, Health Policy Plan. 2016;31(8):1107-16. doi:
485 10.1093/heapol/czw044.
- 486 6. World Health Organization. Infant and young child feeding. 2021. Available from:
487 <https://www.who.int/news-room/fact-sheets/detail/infant-and-young-child-feeding>.
- 488 7. UNICEF. Breastfeeding. 2022. [Breastfeeding - UNICEF DATA](#).
- 489 8. UNICEF. The state of the world's children 2015: Executive summary. Reimagine the
490 future. Innovation for every child. 2015. Available at:
491 <https://www.Unicef.Org/Reports/State-Worlds-Children-2015>
- 492 9. Ministry of Social Affairs. Ministry of Social Affairs 1996 Pap Child Survey, 1996.
- 493 10. World Health Organization (WHO). WHO 2009 Global Data Bank on Infant and Young
494 Child Feeding, 2009.
- 495 11. Nabulsi M. Why are breastfeeding rates low in Lebanon? A qualitative study. BMC
496 Pediatr. 2011; 11:75. doi: 10.1186/1471-2431-11-75.
- 497 12. BouDiab S, Werle C. What motivates women to breastfeed in Lebanon? An exploratory
498 qualitative analysis. Appetite. 2018; 123:23-31. doi: 10.1016/j.appet.2017.12.002.

- 499 13. Akik C, Ghattas H, Filteau S, Knai C. Barriers to breastfeeding in Lebanon: A Policy
500 analysis. *J Public Health Policy*. 2017; 38(3): 314-326. doi: 10.1057/s41271-017-0077-9.
- 501 14. Al-Jawaldeh A, Abul-Fadl A. Assessment of the baby friendly hospital initiative
502 implementation in the eastern Mediterranean region. *Children*. 2018; 5(3):41. doi:
503 10.3390/children5030041.
- 504 15. Nabulsi M, Tamim H, Shamsedine L, Charafeddine L, Yehya N, Kabakian-Khasholian T,
505 et al. A multi-component intervention to support breastfeeding in Lebanon: A
506 randomized clinical trial. *PLoS ONE*. 2009;14:e0218467. doi:
507 10.1371/journal.pone.0218467.
- 508 16. World Food Program. WFP Lebanon situation report-January 2023. Available from:
509 <https://reliefweb.int/report/lebanon/wfp-lebanon-situation-report-january-2023>.
- 510 17. Chola L, Fadnes LT, Engebretsen IMS, Nkonki L, Nankabirwa V, Sommerfelt H, et al.
511 Cost-effectiveness of peer counselling for the promotion of exclusive breastfeeding in
512 Uganda. *PLoS One*. 2015;10(11):e0142718. doi:
513 10.1371/journal.pone.0142718.eCollection 2015.
- 514 18. Desmond C, Bland RM, Boyce G, Coovadia HM, Coutsooudis A, Rollins N, et al.
515 Scaling-up exclusive breastfeeding support programmes: the example of KwaZulu-Natal.
516 *PLoS One*. 2008;3(6):e2454. doi: 10.1371/journal.pone.0002454.
- 517 19. Frick KD, Pugh LC, Milligan RA. Costs related to promoting breastfeeding among urban
518 low-income women. *J Obstet Gynecol Neonatal Nurs*. 2012;41(1):144-150. doi:
519 10.1111/j.1552-6909.2011.01316.x.

- 520 20. Pugh LC, Serwint JR, Frick KD, Nanda JP, Sharps PW, Spatz DL, et al. A randomized
521 controlled community-based trial to improve breastfeeding rates among urban low-
522 income mothers. *Acad Pediatr*. 2010;10(1):14-20. doi: 10.1016/j.acap.2009.07.005.
- 523 21. Nabulsi M, Hamadeh H, Tamim H, Kabakian T, Charafeddine L, Yehya N, et al. A
524 complex breastfeeding promotion and support intervention in a developing country: study
525 protocol for a randomized clinical trial. *BMC Public Health*. 2014;14:36. doi:
526 10.1186/1471-2458-14-36.
- 527 22. Arnold RJG. *Pharmacoeconomics: from theory to practice*. CRC Press, 2016.
- 528 23. Drummond MF, Sculpher MJ, Claxton K, Stoddart GL, Torrance GW. *Methods for the*
529 *economic evaluation of health care programmes*. Oxford university press, 2015.
- 530 24. Frick KD, Milligan RA, White KM, Serwint JR, Pugh LC. Nurse-supported breastfeeding
531 promotion: A framework for economic evaluation. *Nurs Econ*. 2005;23(4):165-72, 206,
532 147.
- 533 25. Chola L, Fadnes LT, Engebretsen IMS, Nkonki L, Nankabirwa V, Sommerfelt H, et al.
534 Cost-effectiveness of peer counselling for the promotion of exclusive breastfeeding in
535 Uganda. *PLoS One*. 2015;10(11):e0142718. doi: 10.1371/journal.pone.0142718.
- 536 26. Frick KD, Pugh LC, Milligan RA. Costs related to promoting breastfeeding among urban
537 low-income women. *J Obstet Gynecol Neonatal Nurs*. 2012;41(1):144–150. doi:
538 10.1111/j.1552-6909.2011.01316.x.
- 539 27. Bland RM, Little KE, Coovadia HM, Coutsooudis A, Rollins NC, Newell ML.
540 Intervention to promote exclusive breast-feeding for the first 6 months of life in a high
541 HIV prevalence area. *AIDS*. 2008;22(7):883-91. doi: 10.1097/QAD.0b013e3282f768de.

- 542 28. Desmond C, Bland RM, Boyce G, Coovadia HM, Coutsooudis A, Rollins N, et al.
543 Scaling-up exclusive breastfeeding support programmes: the example of KwaZulu-Natal.
544 PLoS One. 2008; 3(6) e2454. doi: 10.1371/journal.pone.0002454.
- 545 29. UNICEF. UNICEF calls for the narrowing of “breastfeeding gaps” between rich and poor
546 worldwide. 2018. Available at: [https://www.unicef.org/eca/press-releases/unicef-calls-](https://www.unicef.org/eca/press-releases/unicef-calls-narrowing-breastfeeding-gaps-between-rich-and-poor-worldwide)
547 [narrowing-breastfeeding-gaps-between-rich-and-poor-worldwide](https://www.unicef.org/eca/press-releases/unicef-calls-narrowing-breastfeeding-gaps-between-rich-and-poor-worldwide).
- 548 30. Hackman NM, Schaefer EW, Beiler JS, Rose CM, Paul IM. Breastfeeding outcome
549 comparison by parity. Breastfeeding Medicine. 2015;10(3):156–162. doi:
550 10.1089/bfm.2014.0119.
- 551 31. Bartick M, Reinhold A. The burden of suboptimal breastfeeding in the United States: A
552 pediatric cost analysis. Pediatrics.2010;125:e1048-1056. doi: 10.1542/peds.2009-1616.
- 553 32. Pokhrel S, Quigley MA, Fox-Rushby J, McCormick F, Williams A, Trueman P, et al.
554 Potential economic impacts from improving breastfeeding rates in the UK. Arch Dis
555 Child. 2015;100:334-40. doi: 10.1136/archdischild-2014-306701.

556

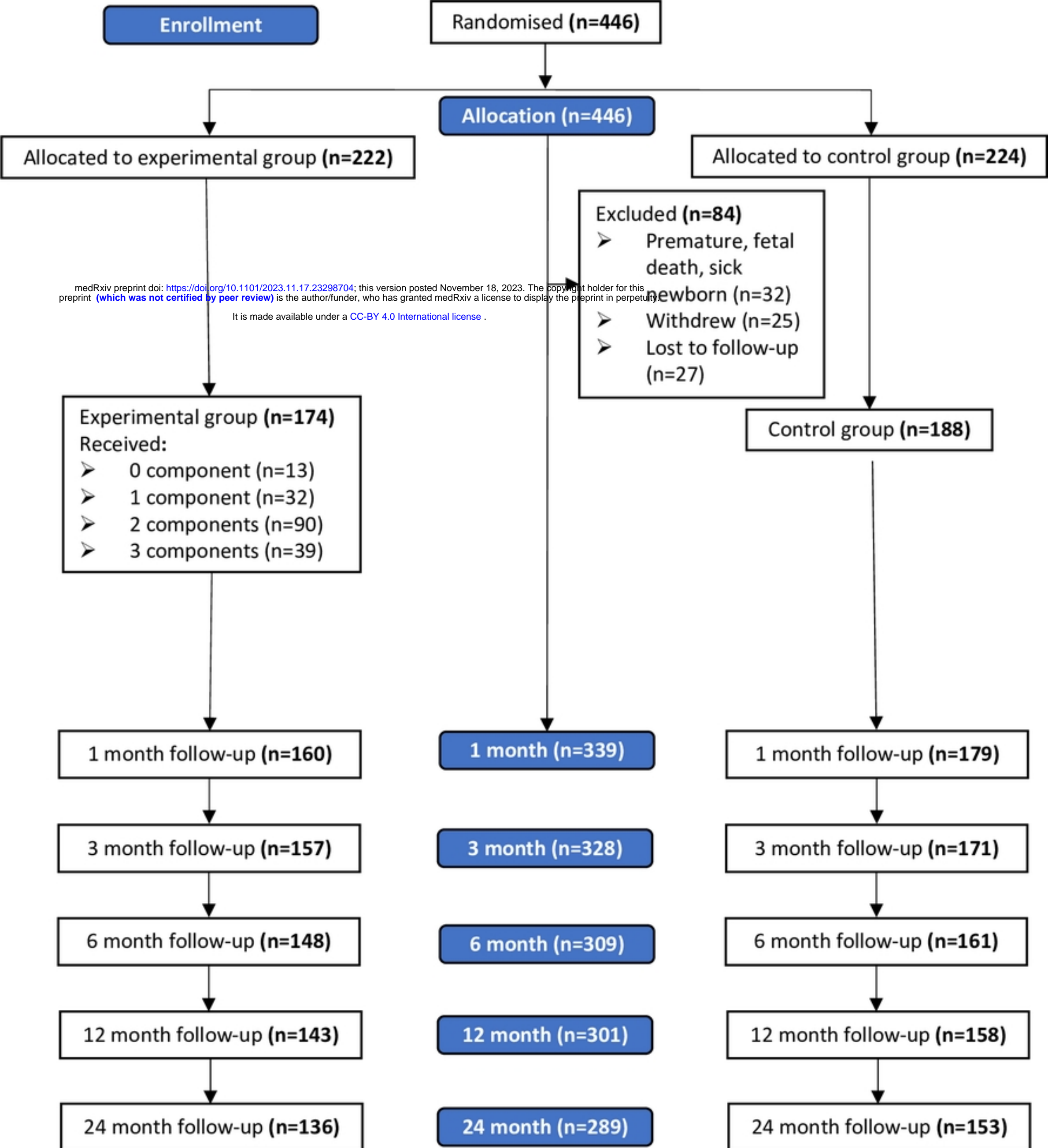
557 **Supporting information**

558 **S1 Table. Comparison of the trial experimental and the control groups at different time**
559 **points.**

560 **S2 Table. Comparison of the Exclusive/Predominant BF and any formula groups at**
561 **different time points.**

562 **S3 Table. Comparison of the exclusive formula feeding and any breastfeeding groups at**
563 **different time points.**

564 **S4 Table. Comparison of the Excusive/Predominant BF, mixed feeding, and exclusive**
565 **formula feeding groups.**



medRxiv preprint doi: <https://doi.org/10.1101/2023.11.17.23298704>; this version posted November 18, 2023. The copyright holder for this preprint (which was not certified by peer review) is the author/funder, who has granted medRxiv a license to display the preprint in perpetuity. It is made available under a [CC-BY 4.0 International license](https://creativecommons.org/licenses/by/4.0/).

Figure