

1 **Title page**

2 **Microbiological and Clinical Characteristics of Hypervirulent**

3 ***Klebsiella pneumoniae* isolated from Patients in Tertiary Centers**

4

5 **Name and affiliations of authors:**

6 Aimi Khairuddin¹□, Nik Mohd Noor Nik Zuraina¹□. Nur Syafiqah Mohamad Nasir¹, Chua

7 Wei Chuan^{1,2}, Hamimi Salihah Abdul Halim², Wardah Yusof¹, Azura Husin³, Chan Yean

8 Yean¹, and Siti Asma' Hassan^{1,2*}

9

10 ¹Department of Medical Microbiology & Parasitology, School of Medical Sciences, Universiti

11 Sains Malaysia, 16150 Kubang Kerian, Kelantan.

12 ²Hospital USM, Health Campus, USM, 16150, Kubang Kerian, Kelantan, Malaysia.

13 ³Department of Pathology (Microbiology), Hospital Raja Perempuan Zainab II, 15586 Kota

14 Bharu, Kelantan, Malaysia

15

16 ***Corresponding author:**

17 Associate Prof. Dr Siti Asma' Hassan

18 Tel: +6097676826

19 Fax: +6097676289

20 Email: sitiasmakb@usm.my

21 □ These authors contributed equally to this work and shared the first authorship.

22

23 Abstract

24 Hypervirulent *Klebsiella pneumoniae* (hvKp) has emerged as a significant pathogen capable
25 of causing severe community-acquired infections in otherwise healthy people. This cross-
26 sectional, retrospective study aimed to investigate the prevalence of hvKp, its virulence-
27 associated genes, and the clinical manifestations of hvKp infections. HvKp was defined in this
28 study as *K. pneumoniae* with a positive string test and harbouring the serotype K1 or K2 gene.
29 A total of 180 isolates from various clinical specimens were collected from June 2020 to June
30 2021 in four main hospitals in Kelantan. All isolates were examined for hypermucoviscous
31 phenotype by string test, while the presence of capsular serotype and other virulence genes
32 (*rmpA*, *rmpA2*, *iucA*, *magA*, *peg-344*) was done by PCR. Patients' clinical data was collected
33 and analyzed. String test positive isolates (23.8%, n = 43) were identified as hypermucoviscous
34 *K. pneumoniae* (hmKp). Capsular serotypes K1 and K2 were detected in 11.1% (n = 20) and
35 6.1% (n = 11), respectively. The prevalence of hvKp was found to be 9.4% (n = 17). All the
36 hvKp isolates were positive for *rmpA*, *rmpA2*, *iucA*, and *peg-344* genes, while all ten hvKp-K1
37 serotypes were positive for *magA*, the K1 serotype-specific gene. The associations of all the
38 corresponding virulence genes with both serotypes K1 and K2 were statistically significant
39 (p<0.05). HvKp infections were more prevalent in men and individuals with hypertension.
40 Pneumonia was the leading clinical diagnosis in hvKp infected patients, with the mortality rate
41 was 12%. The presence of all biomarkers (*rmpA*, *rmpA2*, *magA* (for K1 serotype), *iucA*, and
42 *peg-344* in hmKp, in combination with clinical manifestations, might be reliable for hvKp
43 diagnosis and epidemiological surveillance.

44 Introduction

45 *Klebsiella pneumoniae* can be classified as either classical *K. pneumoniae* (cKp) or
46 hypervirulent *K. pneumoniae* (hvKp) strains based on their phenotypic and clinical
47 characteristics. In contrast to cKp, hvKp typically exhibits a hypermucoviscous phenotype via
48 a string test, in which a viscous string of at least five millimetres can be stretched from the
49 colony using an inoculation loop. In addition, hvKp has the ability to infect healthy individuals
50 of any age, as well as the proclivity to cause multiple sites of infection and/or metastatic spread
51 in the community.

52 Despite being hypermucoviscous, hvKp strains employ distinct virulence determinants
53 such as siderophores, excessive capsule production, lipopolysaccharides, and colibactin toxin
54 for survival and pathogenesis. The polysaccharide capsule is believed to be the key virulence
55 factor responsible for distinctive hypermucoviscous characteristic [1]. Capsular serotypes K1
56 and K2 have been reported as the most common strains associated with hvKp infections. The
57 ability to produce enhanced amount of capsular polysaccharides is mediated by *rmpA* and
58 *rmpA2* hvKp-specific regulators of the mucoid phenotype [2, 3]. The *magA* gene, which is
59 recognized as a K1 surrogate marker, encodes a polymerase involved in capsule synthesis [4].
60 HvKp strains produce four different plasmid-encoded siderophores (aerobactin, enterobactin,
61 salmochelin, and yersiniabactin) for iron acquisition. Aerobactin, encoded by the *iuc* gene, is
62 expressed in more than 90% of hvKp strains but only 6% of cKp strains. Hence, it is suggested
63 that aerobactin can serve as a more reliable biomarker for hvKp [5].

64 The prevalence of hvKp varied among studies. The first clinical report published in
65 1986 described seven cases of invasive *K. pneumoniae* infection in Taiwanese community
66 members who presented with a hepatic abscess in the absence of biliary tract illness and septic
67 endophthalmitis [6]. *K. pneumoniae* strains causing hepatic abscesses in the Taiwanese patients
68 had a higher likelihood of being hypermucoviscous than non-invasive strains. Lin *et al.* (2012)

69 reported that healthy subjects from Asian countries, including Malaysia, had a higher
70 prevalence of *K. pneumoniae* colonic colonization (18.8% to 87.7%), in contrast to Western
71 countries (5% to 35%) [7]. However, data on the prevalence of hvKp is limited. Therefore, this
72 study aimed to determine the prevalence of hvKp and its associated virulence genes, as well as
73 to describe the clinical presentations of patients infected with this pathogen. In this study, hvKp
74 is defined as *K. pneumoniae* isolates having a hypermucoviscous phenotype and the presence
75 of either the KI or K2 gene.

76

77 **Methods**

78 **Study design**

79 This cross-sectional study involved retrospective record reviews from June 2020 until
80 June 2021. Clinical isolates from various types of specimens were collected from four tertiary
81 reference hospitals in Kelantan, Malaysia. The inclusion criteria for this study included *K.*
82 *pneumoniae* isolates that were confirmed by both culture and molecular methods, via routine
83 diagnostic tests and via PCR detection of the housekeeping gene (*gapA*), respectively. *K.*
84 *pneumoniae* isolates from the same patient with the same episode of infection were excluded.
85 A total of 180 isolates from various clinical specimens were collected during the study period
86 and subjected to string test and other molecular methods. Operational definitions used in this
87 study were: a) hmKp - a hypermucoviscous *K. pneumoniae* colony with positive string test
88 (defined by the formation of a viscous string of more than 5 mm; and b) hvKp - all cases with
89 positive string test with the presence of either KI or K2 gene [4, 8]. This study was approved
90 by the Medical Research and Ethic Committee, Ministry of Health Malaysia (Reference
91 Number: NMRR-20-3146-57787 (IIR)) and from the Universiti Sains Malaysia (Reference
92 number: USM/JEPeM/21020183).

93 Identification of hmKp and hvKp isolates

94 Specimen growth for *K. pneumoniae* isolates were proceeded for further bacterial
95 identification based on colony morphology, gram-staining, biochemical tests, Vitek2 Gram-
96 negative (GN) identification card (BioMerieux, Marcy Ietoile, France) and/or MALDI-TOF
97 (Bruker Daltonik, Billerica, Massachusetts, USA). Once the colonies were identified as *K.*
98 *pneumoniae*, further molecular confirmation for housekeeping gene (*gapA*) were performed.
99 All 180 isolates of *K. pneumoniae* were identified for their hypermucoviscosity characteristic
100 by the string test method while detection of capsular genes (K1 and K2) was carried out by
101 PCR methods. The presence of other virulence genes (*rmpA*, *rmpA2*, *aerobactin*, *peg-344* and
102 *magA*) were also analyzed by PCR method to investigate their association with the capsular
103 genes.

104

105 Preparation of bacterial DNA template

106 Bacterial DNA template for all 180 isolates of *K. pneumoniae* was prepared by
107 suspending a loopful of colonies from overnight culture plate in 1.5 ml tube containing 400 μ L
108 of DNase-free distilled water. The suspension was boiled for ten minutes at 100°C and
109 centrifuged at 13, 000 \times g for 5 minutes to remove the cell debris. The supernatant was
110 transferred into a new tube and used as DNA template in PCR reaction.

111

112 Multiplex PCR amplification of the target genes

113 Two separate multiplex PCR assays were developed to target the housekeeping gene of
114 *K. pneumoniae* (*gapA*) as an internal control, virulence-associated genes (*rmpA*, *rmpA2*, *iucA*,
115 *magA*, and *peg3*), and the two most common hypervirulent *K. pneumoniae* capsular serotype
116 genes (K1 and K2). Assay 1 was developed to target the K1, *magA* and *peg-344* genes in one

117 system, while Assay 2 targeted the K2, *gapA*, *rmpA*, *rmpA2*, and *iucA* genes. The primers used
118 are listed in the Table 1.

119 For each Assay 1 and 2, a total volume of 20 µl per reaction was prepared, containing
120 a set of forward and reverse primers (final concentration ranged between 0.125 and 1 pmol/µl),
121 *Taq* DNA polymerase (1 unit/µl), *MyTaq* Red Mix buffer solution (1.25×) (Bioline Reagents
122 Ltd., UK), DNA template and molecular grade PCR water. The PCR was performed using a
123 Mastercycler Gradient (Eppendorf, Hamburg, Germany) with an initial denaturation at 95°C
124 for 5 min, 30 cycles consisting of denaturation at 95°C for 30 sec, annealing for 30 sec at 55°C
125 and extension at 68°C for 1 min, followed by a final extension at 72°C for 5 min. The PCR
126 products were electrophoresed through 2% agarose gel (Promega, Madison, USA) at 80 volts
127 for 75 min. Each DNA sample was subjected to both Assays 1 and 2 of the developed multiplex
128 PCR to determine the distribution of virulence genes in all 180 *K. pneumoniae* isolates.

129

130 **Table 1. Primers used for the optimization of multiplex PCR assay.**

Target gene		Sequence (5'-3')	Size (bp)	Reference
<i>rmpA</i>	Forward	ACTGGGCTACCTCTGCTTCA	535	[9]
	Reverse	CTTGCATGAGCCATCTTTCA		
<i>rmpA2</i>	Forward	CTTTATGTGCAATAAG-GATGTT	452	[9]
	Reverse	CCTCCTGGAGAGTAAGCATT		
<i>iucA</i>	Forward	AATCAATGGCTATTCCCGCTG	239	[10]
	Reverse	CGCTTCACTTCTTTCCTGACAGG		
<i>peg-344</i>	Forward	CTTGAAACTATCCCTCCAGTC	508	[11]
	Reverse	CCAGCGAAAGAATAACCCC		
<i>magA</i>	Forward	GGTGCTCTTTACATCATTGC	1282	[9]
	Reverse	GCAATGGCCATTTGCGTTAG		
K1	Forward	GTAGGTATTGCAAGCCATGC	1048	[9]
	Reverse	GCCCAGGTTAATGAATCCGT		
K2	Forward	GGAGCCATTTGAATTCGGTG	1112	[9]
	Reverse	TCCCTAGCACTGGCTTAAGT		
<i>gapA</i>	Forward	TGAAATATG ACTCCACTCACGG	636	[12]
	Reverse	CTTCAGAAGCGGCTTTGATGGCTT		

131

132

133 **Record tracing and data collection**

134 Medical records of the patients with confirmed hvKp infections were retrieved and
135 reviewed. Patients' data, including demographic, clinical manifestations, underlying medical
136 illnesses and clinical diagnosis were recorded.

137

138 **Statistical analysis**

139 Statistical analysis was performed using SPSS software version 26 (SPSS Inc., Illinois,
140 USA). The demographic and clinical presentations of patients were analyzed by descriptive
141 analysis. Categorical data was presented as frequency and percentage, while numerical data
142 was presented as mean and standard deviation (SD). The Chi Square Test and Simple Logistic
143 Regression (SLR) tests were done for univariate and multivariate analyses. A variable
144 comparison with a p-value less than 0.05 was considered significant.

145

146 **Results**

147 **Clinical and microbiological characteristics of hvKp and non-** 148 **hvKp isolates**

149 Of the total 180 *K. pneumoniae* isolated from various types of specimens from four
150 main hospitals in Kelantan, common cases were found in tracheal aspirate (27.8%, n = 50),
151 blood (24.4%, n = 44), and sputum (21.7%, n = 39) (Figure 1). A positive string test was
152 identified in 43 (23.9%) isolates. Of this number, only 17 (9.4%) isolates were detected to have
153 hvKp characteristics. As described earlier, hvKp is defined in this study as *K. pneumoniae*
154 isolates that exhibit a positive string test in the presence of either the KI or K2 genes.

155

156 **Figure 1. Distribution of hvKp (n = 17) and non-hvKp (n = 163) isolates based on the**
157 **types of samples (n = 180).**

158 **Social-demographic data and clinical presentations of patients**
159 **infected with hvKp**

160 The demographic data of patients infected with hvKp were reviewed and described in
161 Table 2. The age of the patients ranged from one to 85, with a mean of 49.63 years. Patients
162 aged less than 60 years (58.8%) were found to acquire more hvKp infections than those above
163 60 years. Additionally, male patients had higher infection cases than females. Respiratory
164 infections were found to be the most common clinical presentation of hvKp infection in our
165 study.

166 **Table 2: Social-demographic data and clinical presentations of patients infected with**
167 **hypervirulent *K. pneumoniae* (hvKp) (n = 17).**

Variable	Options	Frequency (n = 17)	%
Ages	>60 years	7	41.2
	≤60 years	10	58.8
Gender	Male	13	76.5
	Female	4	23.5
Clinical Presentation	Pneumonia	12	70.5
	Abdominal pathology	0	0
	Liver abscess	1	5.9
	Sepsis	2	11.8
	Others (e.g: malignancy, soft tissue infection)	2	11.8
Comorbid	Diabetes mellitus	2	11.8
	Hypertension	6	35.3
	Pulmonary disease	3	17.6
	Chronic kidney disease Cardiovascular disease	0	0
	No comorbidities	1	5.9
Types of samples	Blood	5	29.4
	Endotracheal tube	6	35.3
	Sputum	4	23.5
	Pus	1	5.9
	Swab	1	5.9
Outcome	Discharged	15	88.2
	Death	2	11.8

169 **Molecular characteristics of hvKp and non-hvKp isolates**

170 The hvKp and non-hvKp isolates were further characterized using molecular assays
171 based on the presence of virulence genes. The developed multiplex PCR assays simultaneously
172 targeted K2, *gapA*, *rmpA*, *rmpA2* and *iucA* genes in Assay 1; and K1, *magA* and *peg-344* in
173 Assay 2 (Figure 2).

174

175 **Figure 2. Representative image of agarose gel electrophoresis of multiplex PCR Assay 1**
176 **(a) and Assay 2 (b).** Assay 1 and Assay 2 targeted K2 serotype (1112 bp), *gapA* (636 bp),
177 *rmpA* (535 bp), *rmpA2* (452 bp) and *iucA* (239 bp); and K1 serotype (1048 bp), *magA* (1282
178 bp), and *peg-344* (636 bp), respectively. Lane M: 1000plus bp DNA ladder, lane NC: negative
179 control, lane PC: positive control, lanes 1 - 12: *K. pneumoniae* isolates.

180

181 Among the total 180 *K. pneumoniae* isolates, K1 and K2 capsular serotypes were
182 detected in 11.1% (n = 20/180) and 6.1% (n = 11/180), respectively. In contrast, 82.8% (n =
183 149/180) of the isolates lacked the K1/K2 capsular serotype-specific (*cps*) genes. This group
184 was classified as non-K1/K2. In further analysis, only 50% (n = 10/20) and 63.6% (n = 7/11)
185 of the K1 and K2 isolates expressed hypermucoviscous characteristics by string test positive,
186 respectively. The K1 serotype exhibited 100% (20/20) positive detection for *magA*, *iucA* and
187 *rmpA2* virulence genes. High detection rates were also observed for *rmpA* (95%, n = 19/20)
188 and *peg-344* genes (80%, n = 16/20). Meanwhile, a majority of the K2 serotypes in this study
189 were found to be positive for *iucA* (91%, n = 10/11), *rmpA* (91%, n = 10/11), *rmpA2* (82%, n
190 = 9/11), and *peg-344* (82%, n = 9/11). None of the K2 serotypes were positive for the *magA*
191 virulence gene.

192 **Distribution of virulence genes associated with hypermucoviscous**
193 ***K. pneumoniae* (hmKp) and non-hypermucoviscous *K. pneumoniae***
194 **(non-hmKp)**

195 Apart from the characteristic of hvKp, a total of 43 (23.9%) cases of positive string tests
196 (hmKp) were recorded. Of these 43 hmKp isolates, 23.3% (n = 10/43) and 16.3% (n = 7/43)
197 were K1 and K2 serotypes, respectively (Figure 3). Overall, the *rmpA* (81.4%, n = 35/43) gene
198 was found to be the most prevalent in the hmKp strains, followed by the *iucA* (69.8%, n =
199 30/43) and *peg-344* (69.8%, n = 30/43), *rmpA2* (65.1%, n = 28/43) and *magA* (23.3%, n =
200 10/43) genes.

201

202 **Figure 3. Distribution of virulence genes associated with hmKp (string test positive, n =**
203 **43) and non-hmKp (string test negative, n = 137).**

204

205 **Distribution of virulence genes associated with K1 and K2 capsular**
206 **serotypes**

207 All virulence genes (*rmpA*, *rmpA2*, *iucA*, *magA*, and *peg-344*) were statistically
208 significantly associated with K1 (p<0.001). A significant association between *rmpA*, *rmpA2*,
209 *iucA*, and *peg-344* with K2 (p<0.05) was also observed (Table 3). Apart from that, *rmpA*,
210 *rmpA2*, *iucA*, *magA*, and *peg-344* were significantly associated with hypermucoviscosity
211 (p<0.005).

212 **Table 3. Association of the virulence-associated genes with capsular serotype K1 and K2.**

Detection of virulence genes		K1 (n = 20) n (%)	Non-K1 (n = 160) n (%)	p- value*	K2 (n = 11) n (%)	Non-K2 (n = 169) n (%)	p- value*
<i>rmpA</i>	No	1 (5.0)	95 (59.4)	<0.001	1 (9.1)	95 (56.2)	0.002
	Yes	19 (95.0)	65 (40.6)		10 (90.9)	74 (43.8)	
<i>rmpA2</i>	No	0 (0.0)	102 (63.7)	<0.001	2 (18.2)	100 (59.2)	0.008
	Yes	20 (100.0)	58 (36.3)		9 (81.8)	69 (40.8)	
<i>iuc</i>	No	0 (0.0)	91 (56.9)	<0.001	1 (9.1)	90 (53.3)	0.005
	Yes	20 (100.0)	69 (43.1)		10 (90.9)	79 (46.7)	
<i>mgaA</i>	No	0 (0.0)	160 (100.0)	<0.001	11 (100.0)	149 (88.2)	0.285
	Yes	20 (100.0)	0 (0.0)		0 (0.0)	20 (11.8)	
<i>peg-344</i>	No	4 (20.0)	99 (61.9)	<0.001	2 (18.2)	101 (59.8)	0.007
	Yes	16 (80.0)	61 (38.1)		9 (81.8)	68 (40.2)	

213 *Chi Square Test

214

215 Discussion

216 Until today, the terminology of “hypervirulent” *K. pneumoniae* remains controversial
217 and varies among studies, as there is still no consensus on the definition of hvKp. Even though
218 it has been suggested that host, pathogen, and host-pathogen interactions should be considered
219 comprehensively for defining hvKp [9] most of the studies focused on the pathogen alone.
220 Early reports used the hypermucoviscous phenotype to define hypervirulent strains [13, 14].
221 However, consequent *in vitro* and *in vivo* analyses by the later studies have revealed that
222 hypermucoviscosity alone is insufficient to describe hvKp because: i) there are disagreements
223 between phenotypic hypermucoviscous and genotypic virulence characteristics [15, 16]; and
224 ii) the string test has been shown to have low sensitivity and specificity^(1,10). Hence, in parallel
225 with hypermucoviscosity, recent studies used several virulence factors, such as K1, K2,
226 aerobactin, and *rmpA* genes, as the more reliable characteristics to describe hvKp [9, 17].

227 In this study, hvKp is specifically defined when the *K. pneumoniae* strains possess both
228 of these criteria: i) hypermucoviscosity; and ii) positive detection of K1 or K2. The similar
229 definition of hvKp was also used by a previous study conducted in Japan [4]. Based on these
230 criteria, this study identified 23.9% (n = 43) hmKp and 9.4% (n = 17) hvKp among 180 *K.*
231 *pneumoniae* isolates. In a retrospective study conducted at a single centre in Malaysia, the
232 proportion of hmKp was 7.5% among 120 carbapenem-resistant *K. pneumoniae*. The majority
233 of the isolates were from hospital-acquired or healthcare-associated infections, and none of the
234 hmKp strains harboured K1 or K2 serotypes [18]. Meanwhile, in China, 33% of the isolates
235 from hospitalized patients were characterized as hmKp (19). In endemic areas, the prevalence
236 of hvKp among *K. pneumoniae* is high, ranging from 12% to 45% [2]. A retrospective genomic
237 epidemiology study reported a higher prevalence of community-acquired “hypervirulent”
238 strains in South and Southeast Asia. However, this study solely characterized hvKp strains
239 using genome sequencing and *K. pneumoniae*-specific genomic typing tools for the presence
240 of hypervirulence-associated loci: K1 and K2 capsular serotypes (18%), yersiniabactin (49%),
241 aerobactin (28%), *rmpA* (18%), *rmpA2* (16%), and *peg-344* (19%), in 331 *K. pneumoniae* BSI
242 isolates.

243 With regard to virulence factors, all the genes investigated in this study — *rmpA*,
244 *rmpA2*, *iucA*, *magA*, and *peg-344*, including the capsular serotype antigens K1 and K2, were
245 significantly associated with hypermucoviscosity ($p < 0.05$). Interestingly, the *rmpA*, *rmpA2*,
246 *iucA*, and *peg-344* genes were detected in all 17 hvKp isolates, which shows that these genes
247 are highly expressed in hvKp. The proportions of K1 and K2 capsular serotypes among 180
248 isolates were 11.1% (n = 20) and 6.1% (n = 11), respectively, which were found to be lower
249 than the other tested virulence genes. Although there are presently more than 70 reported K-
250 serotypes, capsular serotypes K1 and K2 have frequently resulted in severe infections [9].
251 Besides, K1 and K2 are the dominant capsule serotypes that are strongly related to

252 hypervirulent strains [10, 14]. K1 is the most predominant serotype in Asia and was reported
253 to be highly associated with hvKp infections compared to K2 [20].

254 The associations of virulence genes *rmpA*, *rmpA2*, *iucA*, and *peg-344* with K1 and K2
255 serotypes were found to be statistically significant ($p < 0.05$). Aerobactin (*iucA*) has been used
256 as a molecular biomarker for hvKp [17]. This gene was present in 70% ($n = 30$) of the hmKp
257 pathotype in this study and was the most common virulence factor detected (49.4%, $n = 89$)
258 among all isolates. Hence, the use of aerobactin as a sole biomarker for hvKp detection is
259 unlikely. The *magA* gene is significantly associated with K1 ($p < 0.05$) because this gene was
260 claimed to be a serotype-specific gene for K1 [21], justifying its absence in K2 serotypes. Based
261 on the significant associations of the virulence genes with hypermucoviscosity and K1/K2
262 capsular serotypes, the simultaneous detection of *rmpA*, *rmpA2*, *magA* (for K1 serotype), *iucA*,
263 and *peg-344* genes in one single hmKP isolate could represent accurate genetic markers for
264 defining a hvKp strain in the future.

265 Alongside the pathogen, this study also investigated the characteristics of the host
266 (patients). Demographic data of the 17 cases infected by hvKp showed that more than half of
267 the patients were under 60 years old. The finding was consistent with a previous study reporting
268 that patients with hvKp tend to be younger and otherwise healthy individuals but present with
269 severe disease [7]. Specific gender was not a recognized risk factor; however, in this study, the
270 majority of the patients infected with hvKp were male (76.5%, $n = 13$). The similar finding
271 was also reported by another study, in which men are more likely to be infected than women
272 [22]. In terms of clinical manifestations, the patients infected with hvKp were mostly diagnosed
273 with pneumonia (70.6%, $n = 12$). Patients who presented with bacteremic community-acquired
274 pneumonia were increasingly being reported in the Asia-Pacific region and South Africa [3,
275 23]. Respiratory infection was reported as the second most common after liver abscess [22].
276 However, only one single case of liver abscess was found in this study among the hvKp isolates.

277 This discrepancy may be due to geographical differences in exposure and circulating strains.
278 Hypertension was the highest underlying comorbidity (35.5%), followed by diabetes mellitus
279 (11.8%). Some studies suggested that the connection between diabetes mellitus and hvKp could
280 vary by region or clinical presentation [3]. About 88% of hvKp infected-patients were
281 eventually discharged, with the mortality rate for hvKp infection was 12% (n = 2). This was
282 slightly lower than the previous retrospective study reported in Beijing, China [24].

283 The study's strength includes the involvement of four major hospitals, which could
284 reflect the situation in Kelantan state. However, the one-year duration of the study limits the
285 sample collection. Likewise, adding more virulence and capsular serotype genes for hvKp,
286 such as serotypes K5, K20, K54, and K57, may expand the recovery of hypervirulent strains,
287 although their prevalence among hvKp is low [13]. Our study also lacks information on the
288 antimicrobial susceptibility profiles of the *K. pneumoniae* isolates. Hence, antibiogram data
289 should be incorporated into hvKp surveillance studies in the future, as multidrug-resistant hvKp
290 strains are increasingly being reported worldwide [25, 26].

291

292 **Conclusion**

293 In conclusion, based on the positive detection of hmKp and K1 or K2 serotypes, the
294 prevalence of hvKp in this study was found to be 9.4%. HvKp infections were more common
295 in men and individuals with hypertension. Pneumonia was the most common clinical diagnosis
296 in hvKp-infected patients. The mortality rate for hvKp infection was 12%. Molecular detection
297 of virulence factors is more appropriate as using the string test alone for hvKp detection could
298 be misleading. The presence of all biomarkers (*rmpA*, *rmpA2*, *magA* (for K1 serotype), *iucA*,
299 and *peg-344*) in hmKp, along with clinical presentations, could accurately define hvKp. This
300 is important for effective clinical management and epidemiological surveillance.

301 **Acknowledgement**

302 The authors would like to thank the Department of Medical Microbiology and Parasitology,
303 Universiti Sains Malaysia; Hospital Universiti Sains Malaysia; Hospital Raja Perempuan
304 Zainab II; Hospital Sultan Ismail Petra; and Hospital Tanah Merah for providing the bacterial
305 strains and granting us permission to review patients' records.

306 **References**

- 307 1. Catalan-Najera JC, Garza-Ramos U, Barrios-Camacho H. Hypervirulence and
308 hypermucoviscosity: Two different but complementary *Klebsiella* spp. phenotypes? *Virulence*.
309 2017;8(7):1111-23.
- 310 2. Choby JE, Howard-Anderson J, Weiss DS. Hypervirulent *Klebsiella pneumoniae* -
311 clinical and molecular perspectives. *J Intern Med*. 2020;287(3):283-300.
- 312 3. Russo TA, Marr CM. Hypervirulent *Klebsiella pneumoniae*. *Clin Microbiol Rev*.
313 2019;32(3).
- 314 4. Ikeda M, Mizoguchi M, Oshida Y, Tatsuno K, Saito R, Okazaki M, et al. Clinical and
315 microbiological characteristics and occurrence of *Klebsiella pneumoniae* infection in Japan.
316 *Int J Gen Med*. 2018;11:293-9.
- 317 5. Zhang Y, Zhao C, Wang Q, Wang X, Chen H, Li H, et al. High Prevalence of
318 Hypervirulent *Klebsiella pneumoniae* Infection in China: Geographic Distribution, Clinical
319 Characteristics, and Antimicrobial Resistance. *Antimicrob Agents Chemother*.
320 2016;60(10):6115-20.
- 321 6. Casanova C, Lorente JA, Carrillo F, Perez-Rodriguez E, Nunez N. *Klebsiella*
322 *pneumoniae* liver abscess associated with septic endophthalmitis. *Arch Intern Med*.
323 1989;149(6):1467.

- 324 7. Marr CM, Russo TA. Hypervirulent *Klebsiella pneumoniae*: a new public health threat.
325 Expert Rev Anti Infect Ther. 2019;17(2):71-3.
- 326 8. Shon AS, Bajwa RP, Russo TA. Hypervirulent (hypermucoviscous) *Klebsiella*
327 *pneumoniae*: a new and dangerous breed. Virulence. 2013;4(2):107-18.
- 328 9. Liu C, Guo J. Hypervirulent *Klebsiella pneumoniae* (hypermucoviscous and aerobactin
329 positive) infection over 6 years in the elderly in China: antimicrobial resistance patterns,
330 molecular epidemiology and risk factor. Ann Clin Microbiol Antimicrob. 2019;18(1):4.
- 331 10. Sanikhani R, Moeinirad M, Shahcheraghi F, Lari A, Fereshteh S, Sepehr A, et al.
332 Molecular epidemiology of hypervirulent *Klebsiella pneumoniae*: a systematic review and
333 meta-analysis. Iran J Microbiol. 2021;13(3):257-65.
- 334 11. Russo TA, Olson R, Fang CT, Stoesser N, Miller M, MacDonald U, et al. Identification
335 of Biomarkers for Differentiation of Hypervirulent *Klebsiella pneumoniae* from Classical K.
336 *pneumoniae*. J Clin Microbiol. 2018;56(9).
- 337 12. Diancourt L, Passet V, Verhoef J, Grimont PA, Brisse S. Multilocus sequence typing
338 of *Klebsiella pneumoniae* nosocomial isolates. J Clin Microbiol. 2005;43(8):4178-82.
- 339 13. Lin ZW, Zheng JX, Bai B, Xu GJ, Lin FJ, Chen Z, et al. Characteristics of
340 Hypervirulent *Klebsiella pneumoniae*: Does Low Expression of *rmpA* Contribute to the
341 Absence of Hypervirulence? Front Microbiol. 2020;11:436.
- 342 14. Liu YM, Li BB, Zhang YY, Zhang W, Shen H, Li H, et al. Clinical and molecular
343 characteristics of emerging hypervirulent *Klebsiella pneumoniae* bloodstream infections in
344 mainland China. Antimicrob Agents Chemother. 2014;58(9):5379-85.
- 345 15. Zhang Y, Zeng J, Liu W, Zhao F, Hu Z, Zhao C, et al. Emergence of a hypervirulent
346 carbapenem-resistant *Klebsiella pneumoniae* isolate from clinical infections in China. J Infect.
347 2015;71(5):553-60.

- 348 16. Lin YC, Lu MC, Tang HL, Liu HC, Chen CH, Liu KS, et al. Assessment of
349 hypermucoviscosity as a virulence factor for experimental *Klebsiella pneumoniae* infections:
350 comparative virulence analysis with hypermucoviscosity-negative strain. BMC Microbiol.
351 2011;11:50.
- 352 17. Russo TA, Olson R, Macdonald U, Metzger D, Maltese LM, Drake EJ, et al. Aerobactin
353 mediates virulence and accounts for increased siderophore production under iron-limiting
354 conditions by hypervirulent (hypermucoviscous) *Klebsiella pneumoniae*. Infect Immun.
355 2014;82(6):2356-67.
- 356 18. Kong ZX, Karunakaran R, Abdul Jabar K, Ponnampalavanar S, Chong CW, Teh CSJ.
357 The Detection of Hypermucoviscous Carbapenem-Resistant *Klebsiella pneumoniae* from a
358 Tertiary Teaching Hospital in Malaysia and Assessment of Hypermucoviscous as Marker of
359 Hypervirulence. Microb Drug Resist. 2021;27(10):1319-27.
- 360 19. Li W, Sun G, Yu Y, Li N, Chen M, Jin R, et al. Increasing occurrence of antimicrobial-
361 resistant hypervirulent (hypermucoviscous) *Klebsiella pneumoniae* isolates in China. Clin
362 Infect Dis. 2014;58(2):225-32.
- 363 20. Bilal S, Volz MS, Fiedler T, Podschun R, Schneider T. *Klebsiella pneumoniae*-induced
364 liver abscesses, Germany. Emerg Infect Dis. 2014;20(11):1939-40.
- 365 21. Guo Y, Wang S, Zhan L, Jin Y, Duan J, Hao Z, et al. Microbiological and Clinical
366 Characteristics of Hypermucoviscous *Klebsiella pneumoniae* Isolates Associated with Invasive
367 Infections in China. Front Cell Infect Microbiol. 2017;7:24.
- 368 22. Siu LK, Yeh KM, Lin JC, Fung CP, Chang FY. *Klebsiella pneumoniae* liver abscess: a
369 new invasive syndrome. Lancet Infect Dis. 2012;12(11):881-7.
- 370 23. Wu H, Li D, Zhou H, Sun Y, Guo L, Shen D. Bacteremia and other body site infection
371 caused by hypervirulent and classic *Klebsiella pneumoniae*. Microb Pathog. 2017;104:254-62.

- 372 24. Li J, Ren J, Wang W, Wang G, Gu G, Wu X, et al. Risk factors and clinical outcomes
373 of hypervirulent *Klebsiella pneumoniae* induced bloodstream infections. Eur J Clin Microbiol
374 Infect Dis. 2018;37(4):679-89.
- 375 25. Hao M, Shi X, Lv J, Niu S, Cheng S, Du H, et al. In vitro Activity of Apramycin Against
376 Carbapenem-Resistant and Hypervirulent *Klebsiella pneumoniae* Isolates. Front Microbiol.
377 2020;11:425.
- 378 26. Chen J, Zhang H, Liao X. Hypervirulent *Klebsiella pneumoniae*. Infect Drug Resist.
379 2023;16:5243-9.
- 380

Distribution of hvKp and non-hvKp isolates

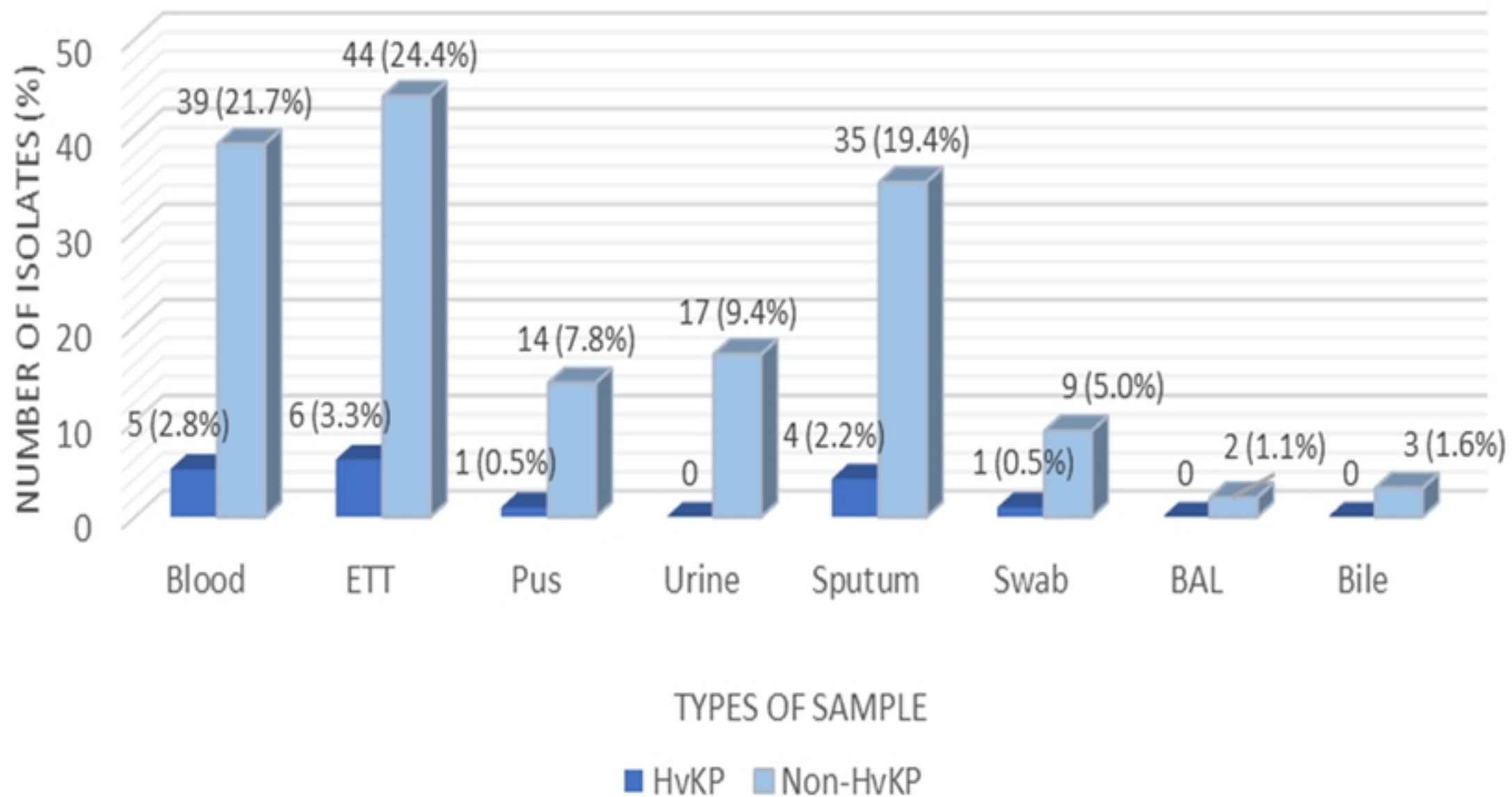


Figure 1

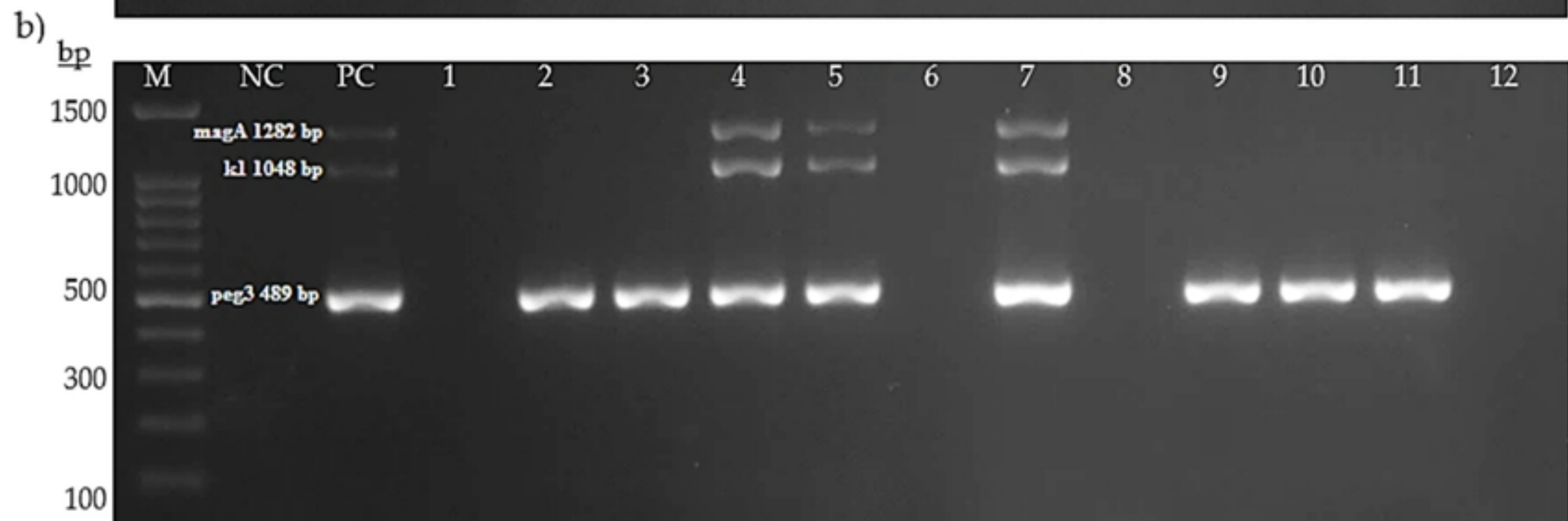
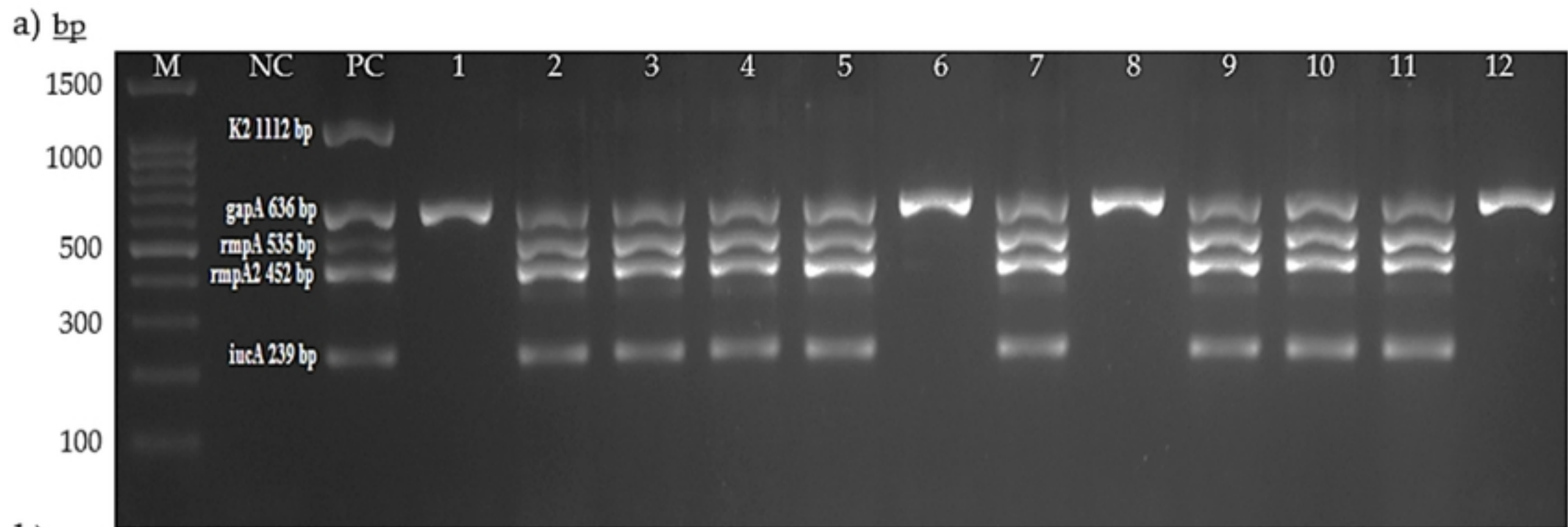


Figure 2

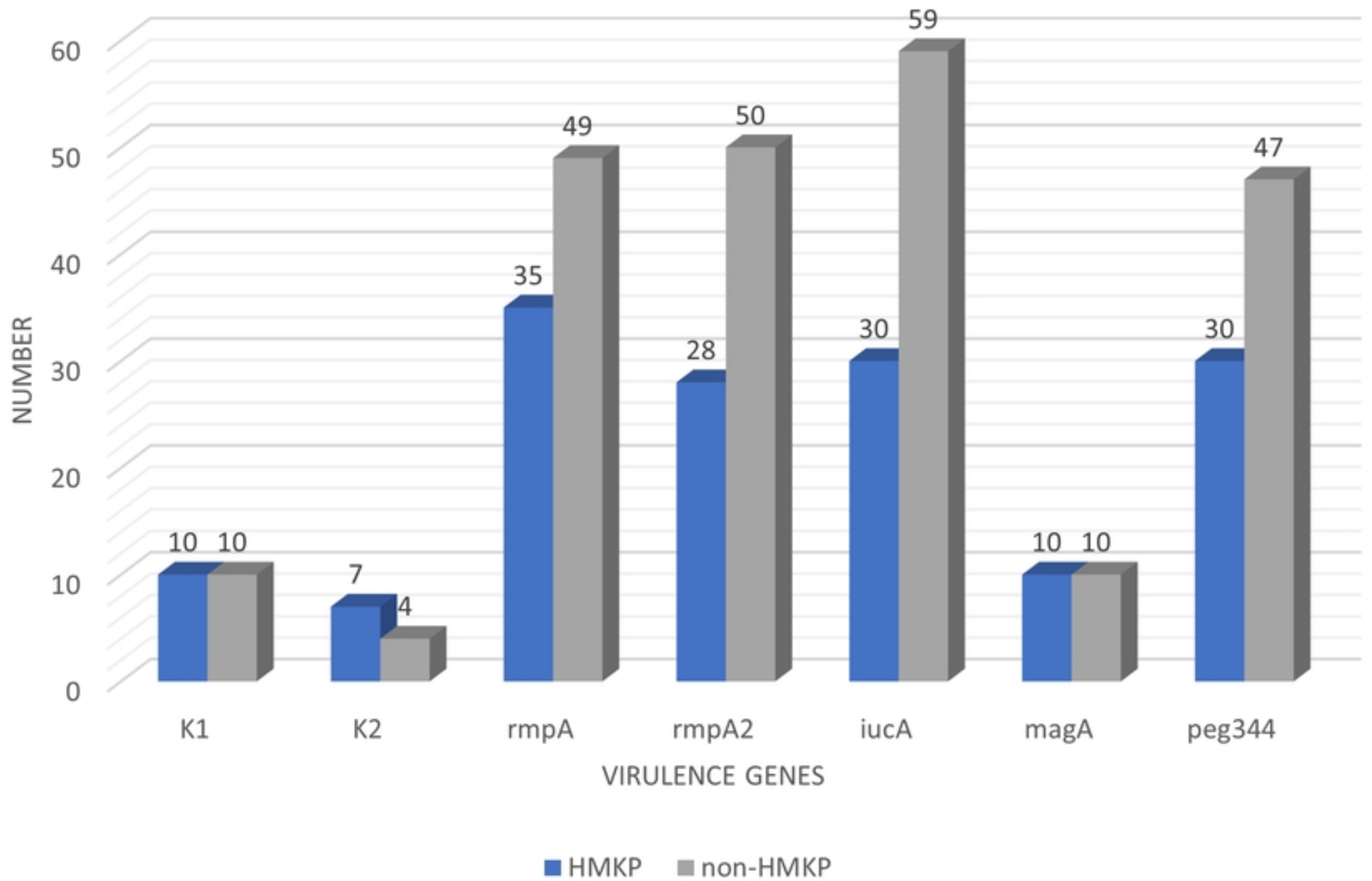


Figure 3