

# 1 Unveiling the Burden of Drug-Induced Impulsivity:

2 A Network Analysis of the FDA Adverse Event Reporting System.

3 **Running Title:** The burden of drug-induced Impulsivity

4  
5 **Authors:** Michele Fusaroli<sup>#a[\*]</sup>, Stefano Polizzi<sup>#b</sup>, Luca Menestrina<sup>#c</sup>, Valentina Giunchi<sup>a</sup>, Luca  
6 Pellegrini<sup>d,e</sup>, Emanuel Raschi<sup>a</sup>, Daniel Weintraub<sup>f,g</sup>, Maurizio Recanatini<sup>c</sup>, Gastone Castellani<sup>b</sup>,  
7 Fabrizio De Ponti<sup>a</sup>, Elisabetta Poluzzi<sup>a</sup>.

8 <sup>#</sup>Equally contributed

9 **Affiliations:**

10 <sup>a</sup>*Pharmacology Unit, Department of Medical and Surgical Sciences, University of Bologna, Bologna, Italy.*

11 <sup>b</sup>*Unit of Medical Physics, Department of Medical and Surgical Sciences, University of Bologna, 40138 Bologna,*  
12 *Italy*

13 <sup>c</sup>*Department of Pharmacy and Biotechnology, Alma Mater Studiorum - University of Bologna, Via Belmeloro 6,*  
14 *40126 Bologna, Italy*

15 <sup>d</sup>*Hertfordshire Partnership NHS University Foundation Trust, Highly Specialised OCD and BDD Service, Rosanne*  
16 *House, Parkway, Welwyn Garden City, Hertfordshire, UK*

17 <sup>e</sup>*School of Life and Medical Sciences, University of Hertfordshire, Hatfield, Hertfordshire, UK*

18 <sup>f</sup>*Perelman School of Medicine at the University of Pennsylvania, Philadelphia, PA*

19 <sup>g</sup>*Parkinson's Disease Research, Education and Clinical Center (PADRECC), Philadelphia Veterans Affairs Medical*  
20 *Center, Philadelphia, PA*

21

22 **Figures:** 7 **Tables:** 3

23 **Word count:** 4,657

24

25

26 <sup>[\*]</sup>[michele.fusaroli2@unibo.it](mailto:michele.fusaroli2@unibo.it)

27

## 28 Abstract

29 **Introduction:** Impulsivity induced by dopaminergic agents, like pramipexole and  
30 aripiprazole, can lead to behavioral addictions impacting social functioning and quality of life  
31 of patients and families (e.g., resulting in unemployment, marital problems, anxiety). These  
32 secondary effects, interconnected in networks of signs and symptoms, are usually overlooked  
33 by clinical trials, not reported in package inserts, and neglected in clinical practice.

34 **Objective:** This study explores the syndromic burden of impulsivity induced by pramipexole  
35 and aripiprazole, pinpointing key symptoms for targeted mitigation.

36 **Methods:** An event-event Information Component (IC) on the FDA Adverse Event Reporting  
37 System (January 2004 – March 2022) identified the syndrome of events disproportionately co-  
38 reported with impulsivity, separately for pramipexole and aripiprazole. A greedy-modularity  
39 clustering on composite network analyses (PPMI, Ising,  $\Phi$ ) identified subsyndromes.  
40 Bayesian network modeling highlighted possible precipitating events.

41 **Results:** Suspected drug-induced impulsivity was documented in 7.49% pramipexole and  
42 4.50% aripiprazole recipients. The highest IC concerned obsessive-compulsive disorder  
43 (reporting rate = 26.77%; IC median = 3.47, 95%CI = 3.33-3.57) and emotional distress  
44 (21.35%; 3.42, 3.26-3.54) for pramipexole, bankruptcy (10.58%; 4.43, 4.26-4.55) and divorce  
45 (7.59%; 4.38, 4.19-4.53) for aripiprazole. The network analysis identified delusional jealousy  
46 and dopamine dysregulation subsyndromes for pramipexole, obesity-hypoventilation and  
47 social issues for aripiprazole. The Bayesian network highlighted anxiety and economic  
48 problems as potentially precipitating events.

49 **Conclusion:** The under-explored consequences of drug-induced impulsivity significantly  
50 burden patients and families. Network analyses, exploring syndromic reactions and potential  
51 precipitating events, complement traditional techniques and clinical judgment. Characterizing  
52 the secondary impact of reactions will support informed patient-centered decision-making.

53

54 **Keywords:** adverse drug reactions; quality of life; pramipexole; aripiprazole; impulse control  
55 disorders

56

### 57 Highlights

58• Drug-induced impulsivity significantly impacts patients' lives. Network analyses help  
59 characterize reactions as syndromes.

60• We explore the impulsivity syndrome and subsyndromes resulting from pramipexole and  
61 aripiprazole.

62• The manifestation of drug-induced impulsivity was different for the two drugs. Anxiety and  
63 economic problems bridge between other symptoms and could be important therapeutical  
64 targets.

65

## 66 1. Introduction

67 Adverse drug reactions (ADRs) significantly impact patients' well-being [1],  
68 extending from organic to psychological and social issues [2,3]. For instance,  
69 immunodeficiency perturbs social activities, dysphonia hinders the ability to function in  
70 positions requiring extensive vocal communication such as teaching or other public-facing  
71 roles, and sexual dysfunction can affect relationships and even personal identity, with further  
72 cascading effects on psychological and physical well-being. Despite their profound effects  
73 and complex networks of interactions, ADRs are often inadequately recognized, resulting in  
74 compromised patient-doctor relationships [4], prolonged hospitalization [5], and a pervasive  
75 decline in quality of life (QoL) [6]. Evidence obtained from patient-reported outcomes –  
76 crucial for QoL assessment and patient-centered care [7] – is equally disregarded and often  
77 relegated to the margins in prescribing information or package inserts [8].

78 Drug-induced impulsivity, classified as “impulse control disorders induced by other  
79 specified psychoactive substance (6C4E.73)” in the International Classification of Diseases  
80 (ICD-11) category of disorders due to substance use, represents a distressing group of  
81 conditions marked by a loss of behavioral control. This pathological disinhibition can yield  
82 behaviors as pervasive as pathologic gambling, hypersexuality, compulsive shopping, and  
83 hyperphagia—the so-called “four knights of Impulse Control Disorder”, all with important  
84 further repercussions on social relationships, physical and psychological wellbeing [9]. Other  
85 behaviors like stealing, hair pulling, and compulsive hoarding, while less acknowledged, can  
86 also occur, and further diversify potential manifestations of drug-induced impulsivity [10,11].

87 The first reports of drug-induced impulsivity were linked to dopamine receptor  
88 agonists like pramipexole, ropinirole, rotigotine, licensed for treating Parkinson's disease  
89 (PD) [12] and restless legs syndrome (RLS) [13,14]. More recently, the role of partial  
90 dopamine agonists like aripiprazole, brexpiprazole, cariprazine, licensed for treating  
91 psychosis and mood disorders, has also emerged as cause of drug-induced impulsivity [15].  
92 Impulsivity as induced by PD treatment has a complex trajectory and may have a different  
93 impact on quality of life depending on underlying susceptibilities and on the occurrence of  
94 exacerbating events. The treatment might initially induce a “honeymoon period”, in which  
95 patients experience heightened motivational drive and often engage in new satisfying hobbies  
96 [16]. However, impulsivity can eventually lead to pervasive behaviors and become  
97 pathologic. Even when concealed in subclinical forms [17], drug-induced impulsivity holds

98 the potential to significantly erode patients' QoL [18]. This erosion, appraised through  
99 metrics like the PDQ-39 scale [19], encompasses diverse neuropsychiatric and somatic  
100 domains including mobility, daily activities, stigma, social support, communication [20],  
101 urinary and sexual function, sleep, attention, and cardiovascular symptoms [21]. The impact  
102 extends beyond patients as it affects caregivers, who grapple with their own set of health  
103 issues, depression, and social impediments due to their duties of care [22].

104 Nevertheless, conventional evaluations focus on simple drug – physical adverse  
105 reaction associations, and often ignore neuropsychiatric symptoms, altered behavior patterns,  
106 financial hardships, and legal entanglements as emerging from drug-induced impulsivity [23],  
107 thus failing to capture the complex network of consequences of its manifestation. This  
108 underscores the crucial need for an integrative approach that consider the perspectives of both  
109 patients and caregivers and acknowledges the complex interconnections between symptoms  
110 [24], including identifying subsyndromes and exacerbating events.

111 In order to better characterize such networks, we can rely on databases collecting  
112 individual case safety reports of suspected ADRs from patients and healthcare professionals.  
113 In particular, in this manuscript we will rely on the US FDA Adverse Event Reporting  
114 System (FAERS), as it is global and public [25]. Crucially, the patient-produced reports offer  
115 impactful insights into the experiences and impacts of ADRs on QoL, beyond those provided  
116 by healthcare professionals [26–30].

117 Network analyses provide the means to explore ADRs as complex system consisting  
118 of multiple interacting entities. Specifically, they enable the analysis and visualization of  
119 ADRs as interwoven symptoms and signs [31]: a composite syndrome encompassing  
120 psychosocial implications, clustered into subsyndromes. This approach overcomes the  
121 drawbacks of viewing drug-induced impulsivity as an isolated incident. Beyond more  
122 descriptive approaches such as those built on measures of association (Ising [32],  $\Phi$  [33], and  
123 PPMI [34]), network approaches can also explore possible causal connections between  
124 symptoms, allowing to identify potential exacerbating events [35,36].

125 In the current manuscript we pursue three goals. First, we want to fully acknowledge  
126 the complexity of drug-induced impulsivity as reported not only by clinical researchers, but  
127 also by clinicians and patients. We go beyond a pairwise drug to adverse reaction approach  
128 and more fully embrace the idea of a syndrome of variously interconnected aspects, from  
129 behavioral addictions to their organic and psychosocial sequelae. By examining the network  
130 in which symptoms interact and affect each other, we aim to gain a deeper understanding of  
131 the impact of drug-induced impulsivity on patients' lives.

132 Second, we want to assess the possibility of distinct sub-syndromes within the broader  
133 spectrum of drug-induced impulsivity. For example, when impulsivity manifests as  
134 hyperphagia it may have more organic sequelae related to weight increased compared to  
135 when it manifests as pathological gambling.

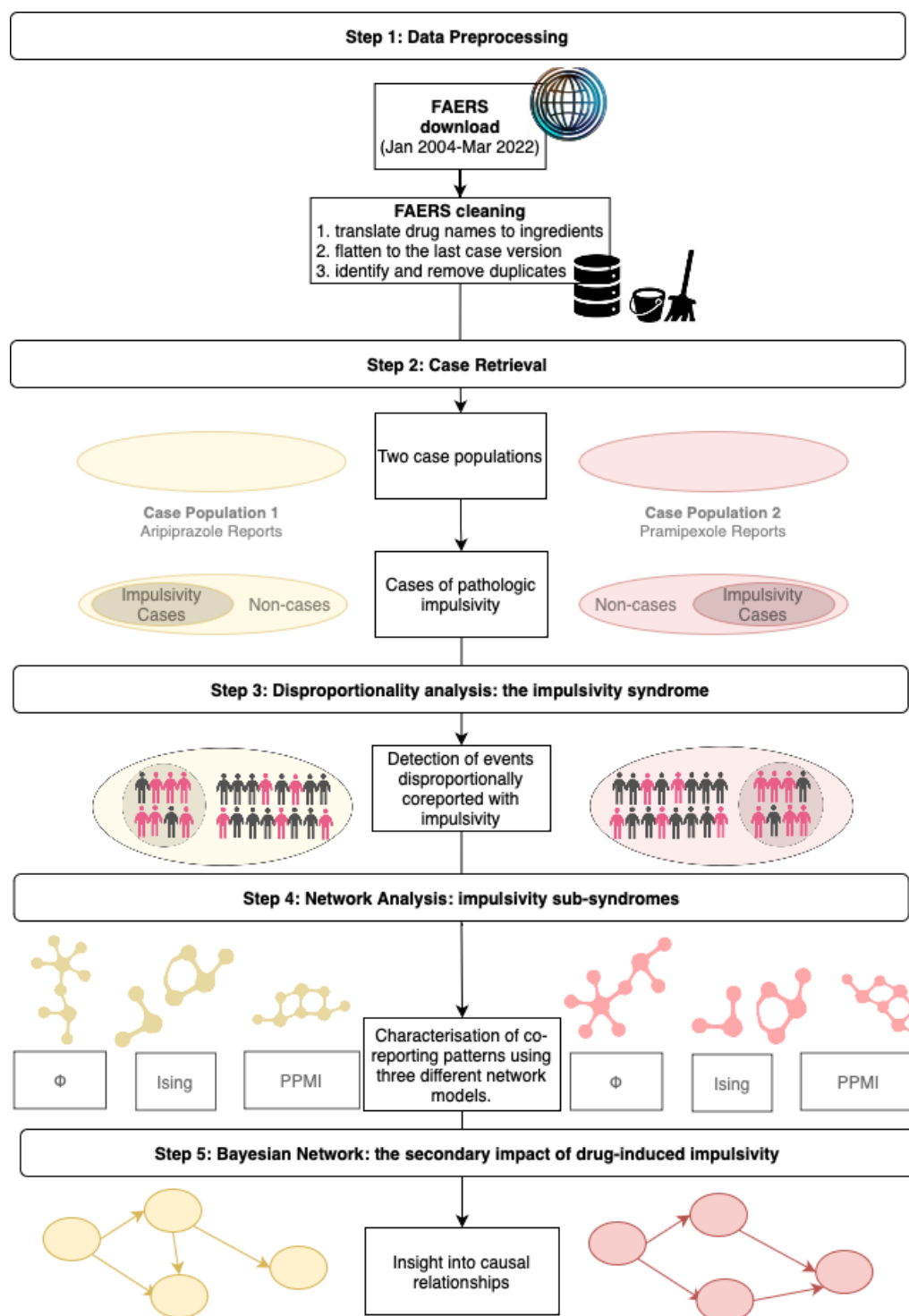
136 Third, we assess the presence of central symptoms, potentially crucially exacerbating  
137 the syndrome of drug-induced impulsivity. By pinpointing these key symptoms, we aim to  
138 pave the way for targeted interventions that alleviate the adverse effects on patients' lives.

139 In pursuing these goals, our study focuses on recipients of pramipexole and  
140 aripiprazole. Pramipexole is a dopamine agonist used in neurological conditions, therefore  
141 prescribed to older individual with stronger social support and a lower baseline motivational  
142 drive. Aripiprazole is a dopamine partial agonist employed in psychiatric disorders, therefore  
143 prescribed to younger and more stigmatized individuals, with a higher baseline motivational  
144 drive. Using these two examples will allow us to capture commonalities in drug-induced  
145 impulsivity as well as potentially different mechanisms/syndromes that manifest only in a  
146 specific indication/patient type. A better understanding of the impact of these ADRs on  
147 quality of life could contribute to informed decision-making for patients and caregivers,  
148 laying the foundation for interventions capable of alleviating the toll exacted by impulsivity.

## 149 2. Methods

### 150 2.0 Study Design

151 The study design is presented in **Figure 1**. We first downloaded and pre-processed  
152 FAERS reports from January 1<sup>st</sup>, 2004, to March 31<sup>st</sup>, 2022 (Step 1) and selected cases  
153 recording impulsivity among the two separate populations of aripiprazole and pramipexole  
154 recipients (Step 2). In order to characterize the impulsivity syndrome, we identified the set of  
155 events disproportionately co-reported with drug-induced impulsivity, rather than with other  
156 suspected reactions of the same drug, using an event-event disproportionality analysis (Step  
157 3). To explore potential sub-syndromes, we relied on three parallel commonly used  
158 descriptive network analyses and a greedy-modularity algorithm, able to identify more  
159 cohesive clusters of co-reported events (Step 4). Finally, to explore possible causal relations  
160 within these networks and the secondary impact of drug-induced impulsivity, we relied on a  
161 Bayesian network approach, able to estimate conditional probabilities of chained events (Step  
162 5). These operations were performed in a standardized and reproducible fashion, made  
163 possible by the DiAna R package: an open access toolkit for disproportionality analyses and  
164 other pharmacovigilance investigations in the FAERS [37].



165

166 **Figure 1. Pipeline of the study**, showing step-by-step the study design.

167

168 2.1 Step 1 – Data Preprocessing

169 We downloaded FAERS quarterly data in ASCII format (January 1<sup>st</sup>, 2004, to March

170 31<sup>st</sup>, 2022) [25]. Adverse events were coded according to the Medical Dictionary for

171 Regulatory Activities (MedDRA®, version 25.0) preferred terms (PTs) [38], while drugs  
172 were standardized according to their active ingredients [39]. The latest report version was  
173 retained, and rule-based deduplication was applied to reduce redundancy (cfr.  
174 <https://github.com/fusarolimichele/DiAna>).

## 175 2.2 Step 2 – Case Retrieval

176 We retrieved aripiprazole and pramipexole recipients separately and identified cases  
177 as reports recording impulsivity among the suspected reactions. To identify impulsivity we  
178 used a MedDRA PT list specifically curated for investigating drug-induced impulsivity  
179 within the FAERS database [10], encompassing heterogenous manifestations including  
180 gambling, hypersexuality, compulsive shopping, hyperphagia, gaming, setting fires, stealing,  
181 hoarding, excessive exercise, overwork, compulsive wandering, body-focused repetitive  
182 behaviors, stereotypy, and impulsivity (see **Table S1**). MedDRA PTs used for reporting  
183 suspected ADRs do not align directly with terms in other frameworks like the Diagnostic and  
184 Statistical Manual of mental disorders (DSM-5-TR) and ICD-11 (e.g., referring to  
185 “kleptomania” as an idiopathic condition).

186 To explore potential risk factors for impulsivity, demographic characteristics,  
187 outcomes, and reporter contributions (e.g., healthcare practitioners, patients, lawyers) were  
188 compared between cases and non-cases within each population, using the Chi-square test for  
189 categorical and Mann-Whitney test for continuous variables. To address multiple testing, we  
190 applied the Holm-Bonferroni correction with a significance level of 0.05.

## 191 2.3 Step 3 – Disproportionality Analysis: The drug-induced impulsivity syndrome

192 We conducted an event-event disproportionality analysis to identify events frequently co-  
193 reported with drug-induced impulsivity, separately for aripiprazole and pramipexole  
194 recipients (see **Table 1**). Disproportionate reporting was assessed using the Information  
195 Component (IC) [40], also known as pointwise mutual information (PMI) in information  
196 theory [41,42]. The IC compares the actual co-reporting of two events  $x$  (i.e., drug-induced  
197 impulsivity) and  $y$  (i.e., any specific event) with their expected co-reporting if their  
198 probability were independent ( $p(y, x) > p(x) * p(y)$ ) [41]. To mitigate the risk of false  
199 positives for infrequent events [43], a shrinkage/smoothing approach was applied by adding  
200  $k=0.5$  to both the numerator and denominator. Significance was determined using  $IC_{0.25} > 0$ .

201

202 **Table 1. 2-way contingency table.** The table shows the different instances that can be observed when considering  
203 pathologic impulsivity and a specific event. Legend: E = event; I = impulsivity; 1 = presence; 0 = lack; N = total

	Event (y)	Other events	Sum
<b>Impulsivity (x)</b>	$n_{I_1E_1}$	$n_{I_1E_0}$	$n_{I_1}$
<b>Other event</b>	$n_{I_0E_1}$	$n_{I_0E_0}$	$n_{I_0}$
<b>Sum</b>	$n_{E_1}$	$n_{E_0}$	<b>N</b>

204

$$IC(x, y) = PMI(x, y) = \log_2 \frac{p(y, x)}{p(x)p(y)} = \log_2 \frac{n_{I_1E_1} * N}{n_{I_1} * n_{E_1}} \approx \log_2 \frac{n_{I_1E_1} + 0.5}{\frac{n_{I_1} * n_{E_1} + 0.5}{N}}$$

$$IC(x, y)_{025} = IC - 3.3 * (n_{I_1E_1} + 0.5)^{\frac{1}{2}} - 2 * (n_{I_1E_1} + 0.5)^{\frac{3}{2}}$$

$$IC(x, y)_{975} = IC + 2.4 * (n_{I_1E_1} + 0.5)^{\frac{1}{2}} - 0.5 * (n_{I_1E_1} + 0.5)^{\frac{3}{2}}$$

205 2.4 Step 4 – Network Analysis: sub-syndromes

206 Building on insights from prior studies on drugs [44] and events [31,45,46] co-  
 207 occurrence, our network analysis aimed to unveil, within the drug-induced impulsivity  
 208 syndrome, sub-syndromes of cohesively clustered events. Together with the Ising estimation  
 209 [32,47], already implemented in pharmacovigilance because of its ability to obtain a sparser  
 210 and easily interpretable network (because of fewer links and more definite clusters) [31], we  
 211 implemented two other more connected network estimations in order to identify broader co-  
 212 reporting patterns (PPMI [34], Ising,  $\phi$  [33]). See **Table 2** for the features of the three  
 213 networks. We did not consider negative links (i.e., potential mutually exclusive events).

214 **Table 2. Network estimations.** The table shows the features of the network estimations implemented.

<b>Ising</b>	<b>PPMI</b> (positive pointwise mutual information)	<b>PHI</b>
The Ising model computed partial logistic regression coefficients ( $\beta$ ) considering the impact of all other events. Positive coefficients indicated a tendency for two events to be reported together. A LASSO method pruned out weak links, eliminating spurious associations but potentially sacrificing weaker genuine relationships, especially triangular type interactions.	Focuses on cases where events were reported together ( $n_{11}$ ), applying additive smoothing ( $k=1$ , $d=N^\circ$ events). Bootstrap and Bonferroni adjustments assessed statistical significance, with a 0.01 threshold for higher specificity. Gives more weight to associations with infrequent events.	The $\phi$ coefficient, akin to the traditional correlation coefficient, approaches one when two events are frequently reported together and converges to zero if they are either independent or mutually exclusive. The Bonferroni adjustment was applied with a significance threshold of 0.01. The p-value was computed using a $\chi^2$ probability distribution with one degree of freedom.
$Ising_{x,y} = \max\left(\frac{1}{2}\beta_{xy}\beta_{yx}, 0\right)$	$PPMI_{x,y} = \max\left(\log_2 \frac{(n_{11} + k) \times (N + kd)}{(n_{1+} + k) \times (n_{+1} + k)}, 0\right)$	$\phi_{x,y} = \max\left(\frac{n_{11}n_{00} - n_{10}n_{01}}{\sqrt{n_{1+}n_{0+}n_{+1}n_{+0}}}, 0\right)$

215



216 Separately for the two population of aripiprazole and pramipexole recipients, the three  
217 networks shared identical nodes by definition but different links were inferred due to the  
218 different properties of the algorithms. We used modularity maximization [48] and the greedy  
219 modularity algorithm [49] to detect clusters of co-reported signs and symptoms. Between  
220 networks we compared degree of link overlap (Jaccard similarity index [50]), goodness of  
221 partitioning (clustering modularity); cluster agreement (Purity index [51–53]), link density  
222 (ratio of actual links to possible links), and interconnectedness among neighbors (small  
223 worldness [54]).

#### 224 2.5 Step 5 – Bayesian Network: The secondary impact of drug-induced impulsivity

225 While other methods look only at symmetrical associations, we expect that some events may  
226 cause other events. To exploratively identify these potential causal dependencies following  
227 drug-induced impulsivity, we estimated the conditional probabilities of chained events  
228 [35,36]. The resulting Bayesian network is both directed, offering insights into plausible  
229 causal relationships, and acyclic (no chain of arrows loops back to itself). The network was  
230 derived through 1000 bootstraps, optimizing the BIC score with the Hill-Climbing algorithm.  
231 We computed the average network retaining links exceeding a threshold computed via  $L_1$   
232 minimization. Evaluation focused on nodes with the highest out-degree centrality and the  
233 main manifestations of drug-induced impulsivity.

234

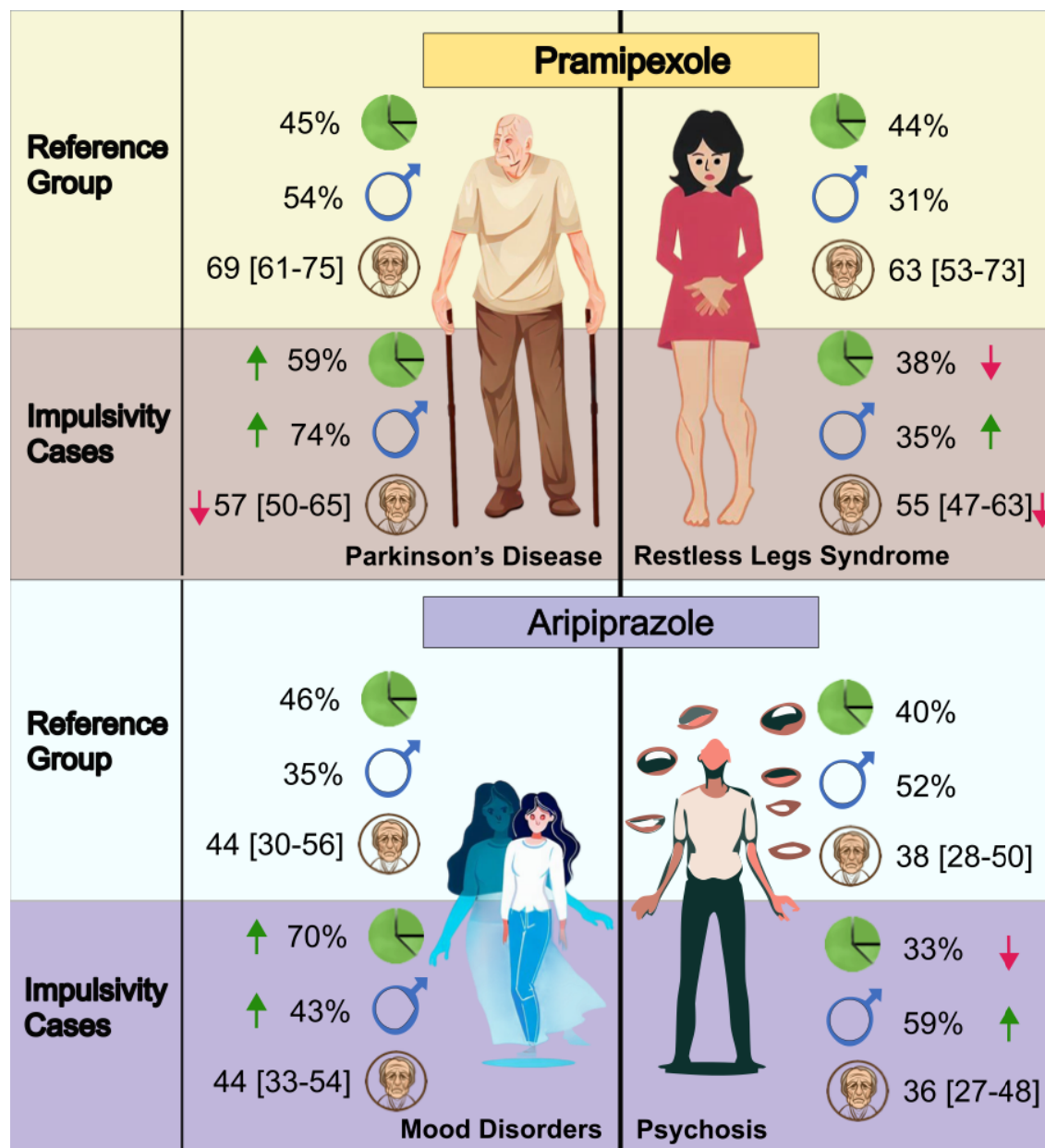
### 235 3. Results

#### 236 3.1 Case Retrieval

237 We retrieved 12,030,756 distinct reports: 27,601 pramipexole recipients and 80,238  
238 aripiprazole recipients. Suspected drug-induced impulsivity was documented in 7.49% of  
239 pramipexole recipients (n=2,066: mainly gambling disorder–n=1,345; 4.87%–,  
240 hypersexuality–612; 2.22%–, impulsivity–453; 1.64%–, compulsive shopping–384; 1.39%–,  
241 and hyperphagia–334; 1.21%–) and in 4.50% aripiprazole recipients (n=3,609: mainly  
242 gambling disorder–n=2,067; 2.58%–, hypersexuality–1,077; 1.34%–, compulsive shopping–  
243 1,029; 1.28%–, hyperphagia–868; 1.08%–, and impulsivity–730; 0.91%–) (see **Table S2**).

244 Among pramipexole recipients, drug-induced impulsivity was more frequently  
245 reported in males (57.42% vs. 36.99%,  $p<0.001$ ) and younger patients (56 vs. 67,  $p<0.001$ ),  
246 often recording non-serious outcomes (i.e., no death, disability, or hospitalization; 44.87% vs.  
247 33.58%,  $p<0.001$ ) and Parkinson’s Disease (PD) as indication (see **Figure 2** and **Table S3**).  
248 Similarly, among aripiprazole recipients, drug-induced impulsivity was more common in

249 males (48.59% vs. 40.72%,  $p < 0.001$ ); peculiarly, hospitalization was more common (33.39%  
 250 vs. 23.39%,  $p < 0.001$ ), and an important portion of reports was submitted by lawyers (34.08%  
 251 vs. 1.10%,  $p < 0.001$ ) (see **Table S4**).



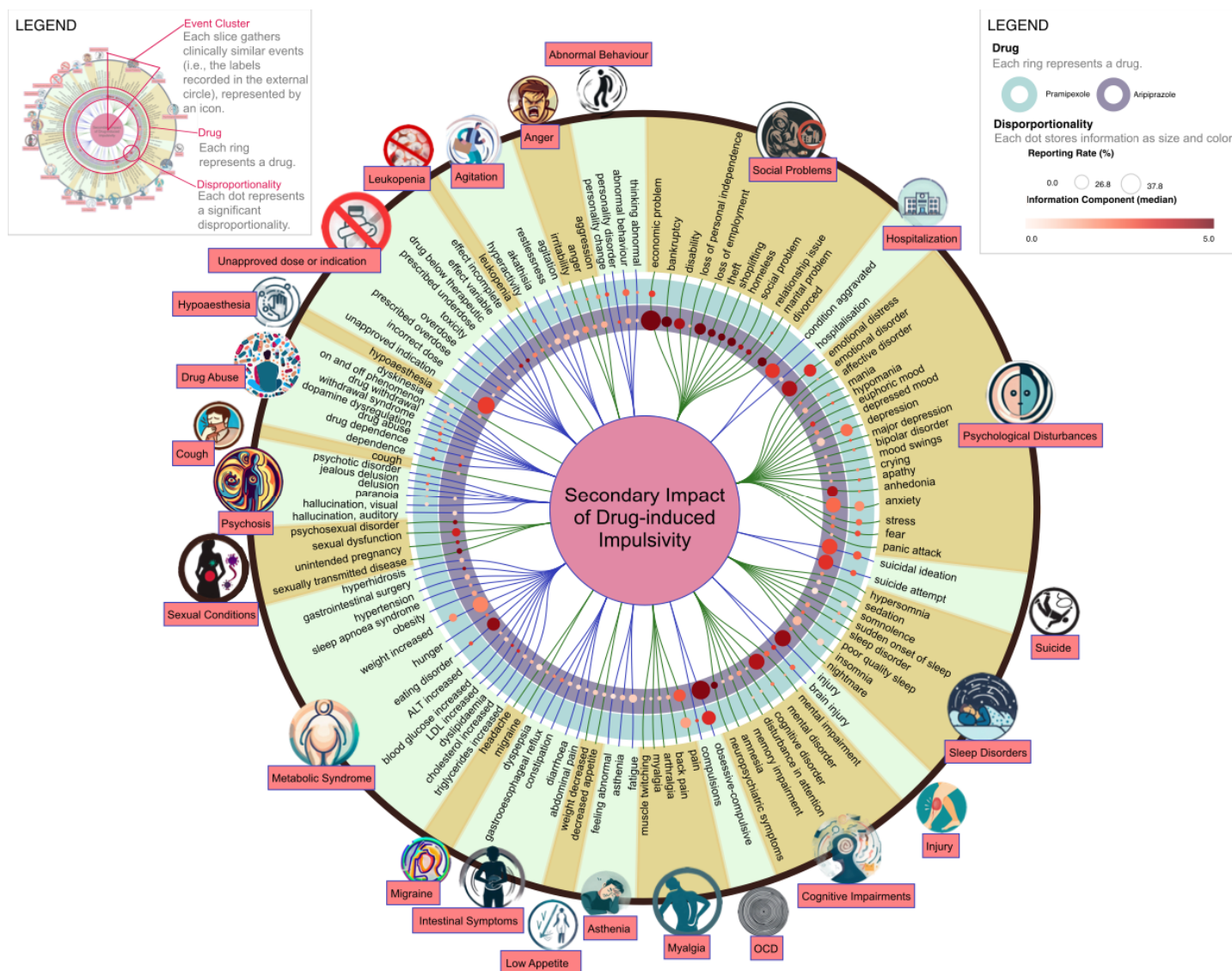
252  
 253 **Figure 2 – Characteristics of the investigated populations.** The figure presents information about two populations  
 254 extracted from the deduplicated FAERS database - one consisting of reports related to pramipexole and the other consisting  
 255 of reports related to aripiprazole. Within these populations, cases of pathologic impulsivity were identified. The figure  
 256 compares drug-induced impulsivity cases and the reference group (other reports recording the drug), considering the  
 257 indication for use. Only the two most prevalent indications were taken into account. For each drug and indication, the  
 258 caption describes the percentage of reports with the specified indication, the percent of reports involving males, and the  
 259 median and interquartile range of ages. In the drug-induced impulsivity cases sections, green and red arrows indicate  
 260 variables that are respectively higher or lower than expected based on the reference group.

261

### 262 3.2 Disproportionality Analysis: the drug-induced impulsivity syndrome

263 A total of 56 events were disproportionately reported with pramipexole-related  
264 impulsivity. The highest IC was found for obsessive-compulsive disorder (OCD, reporting  
265 rate = 26.77%; IC median = 3.47, 95%CI = 3.33-3.57), emotional distress (21.35%; 3.42,  
266 3.26-3.54), marital problem (1.11%; 3.30, 2.61-3.79), dependence (2.37%; 3.26, 2.79-3.6),  
267 economic problems (6.05%; 3.15, 2.85-3.36), compulsions (1.74%; 3.05, 2.49-3.44), fear  
268 (4.65%; 2.95, 2.61-3.19), eating disorder (2.47%; 2.95, 2.49-3.28), personality change  
269 (2.66%; 2.93, 2.49-3.26), and suicide attempt (5.28%; 2.74, 2.43-2.97).

270 A total of 107 events were disproportionately reported with aripiprazole-related  
271 impulsivity. The highest IC was found for bankruptcy (10.58%; 4.43, 4.26-4.55), divorce  
272 (7.59%; 4.38, 4.19-4.53), homeless (6.93%; 4.37, 4.16-4.52), shoplifting (5.02%; 4.37, 4.12-  
273 4.54), neuropsychiatric symptoms (4.74%; 4.35, 4.1-4.53), loss of employment (12.64%;  
274 4.33, 4.18-4.44), theft (5.79%; 4.32, 4.09-4.48), economic problems (37.85%; 4.28, 4.19-  
275 4.34), sexually transmitted disease (3.05%; 4.24, 3.93-4.47), and OCD (33.19%; 4.16, 4.07-  
276 4.23) (see **Figure 3 and Table S5 and S6**).



278 **Figure 3 – Secondary impact of drug-induced impulsivity.** The dendrogram shows the events disproportionately reported  
 279 with aripiprazole and pramipexole-related impulsivity. Events are gathered by clinical similarity in alternately colored slices,  
 280 labeled on the outer border with a name and an icon. Disproportionalities are shown as dots organized in two colored rings,  
 281 each representing a drug/case population. The dots' size is proportional to the percent of reports showing the event, the color  
 282 is darker for stronger disproportionality (higher median Information Component).

283  
 284 **3.3 Network Analysis and sub-syndromes**

285 In the second step we estimated the networks using three different approaches and identifying  
 286 clusters of events. We included a total of 120 nodes (107 events disproportionately reported  
 287 with impulsivity + 13 impulsivity PTs) and 70 nodes (56 + 14) for the aripiprazole and  
 288 pramipexole network, respectively. Although the nodes remained constant, edges, clusters,  
 289 and network properties were different in the three mathematical representations (**Table 3, S7,**  
 290 **S10-S11, Figure S1-S8, S11-S16**). As expected, the degree centrality was highest for the

291 most common events in Ising and for the rarest in PPMI. The Jaccard similarity was highest  
 292 between the networks estimated by Ising and  $\phi$  and lowest for the networks estimated by  $\phi$   
 293 and PPMI (half of the links being different). The clustering was most overlapping between  $\phi$ -  
 294 PPMI, followed by  $\phi$ -Ising and PPMI-Ising, as captured by the purity index.  $\phi$  and PPMI  
 295 tended to present clusters including multiple clusters from the Ising estimated network  
 296 (Figures S11-S16).

297 **Table 3. Network properties.** The table shows the network properties for the three networks estimated for aripiprazole and  
 298 pramipexole, respectively, and for their comparison. Legend: (-) means that there is also a strong link between the first and  
 299 last element.

<b>Aripiprazole (120 nodes)</b>			
gambling disorder (N=2057), economic problems (1366), obsessive-compulsive disorders (1198)			
	<b>Ising</b>	$\phi$	<b>PPMI</b>
<b>Links</b>	301	1186	1254
<b>Central node (1°)</b>	economic problems	Irritability	overwork
<b>Heaviest links (1-3°)</b>	AP below therapeutic – effect variable – effect incomplete Theft–shoplifting	(-)AP below therapeutic– effect variable–toxicity(-)	Kleptomania–overwork– pyromania Overwork–poriomania
<b>Clusters (N)</b>	10	5	4
<b>Clustering modularity</b>	0.71	0.59	0.46
<b>Small worldness (<math>\omega</math>)</b>	0.26	0.04	0.03
	$\phi$ -Ising	$\phi$ -PPMI	PPMI-Ising
<b>Jaccard (out of max)†</b>	0.25 (0.25)	0.56 (0.95)	0.21 (0.24)
<b>Purity index‡</b>	0.68	0.89	0.59
<b>Pramipexole (70 nodes)</b>			
gambling disorder (N=1340), obsessive-compulsive disorders (553), and hypersexuality (543)			
	<b>Ising</b>	$\phi$	<b>PPMI</b>
<b>Links (density %)</b>	85	240	576
<b>Central node (1°)</b>	gambling disorder	mental disorder	pyromania
<b>Heaviest links (1-3°)</b>	body-focused disorders– kleptomania mental impairment–mental disorder on and off phenomenon– dyskinesia	Pain–emotional distress– obsessive-compulsive disorder Hyperphagia–weight increased	(-)Poriomania–pyromania– gaming disorder(-)
<b>Clusters (N)</b>	10	6	4
<b>Clustering modularity</b>	0.66	0.51	0.15
<b>Small worldness (<math>\omega</math>) §</b>	-0.01	0.29	0.47
	$\phi$ -Ising	$\phi$ -PPMI	PPMI-Ising
<b>Jaccard (out of max)</b>	0.34 (0.35)	0.23 (0.42)	0.12 (0.15)
<b>Purity index</b>	0.44	0.66	0.39

300 †  $J(A, B) = \frac{|A \cap B|}{|A \cup B|}$ .

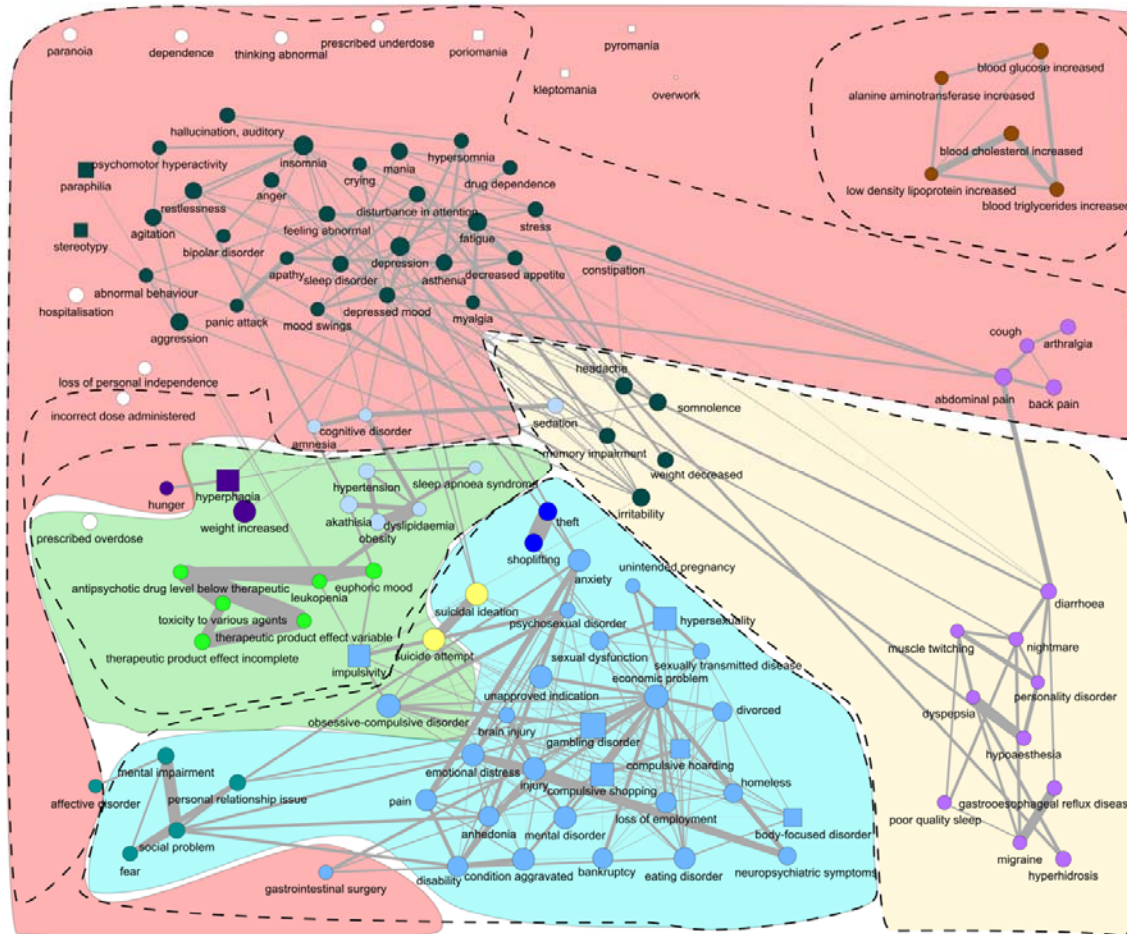
301 ‡ Purity =  $\frac{1}{N} \sum_{k=1}^{K_{min}} \max_{\pi} n_{k,\pi}$ , with  $K_{min}$  the minimum clusters and  $\max_{\pi} n_{k,\pi}$  the maximum elements.

302 § a small world has  $\omega = \frac{L_r}{L} - \frac{C}{C_l} \approx 0$ : the shortest path length  $L$  is similar to that of an equivalent random network  $r$  and the  
 303 clustering coefficient  $C$  is similar to that of an equivalent lattice network  $l$ .

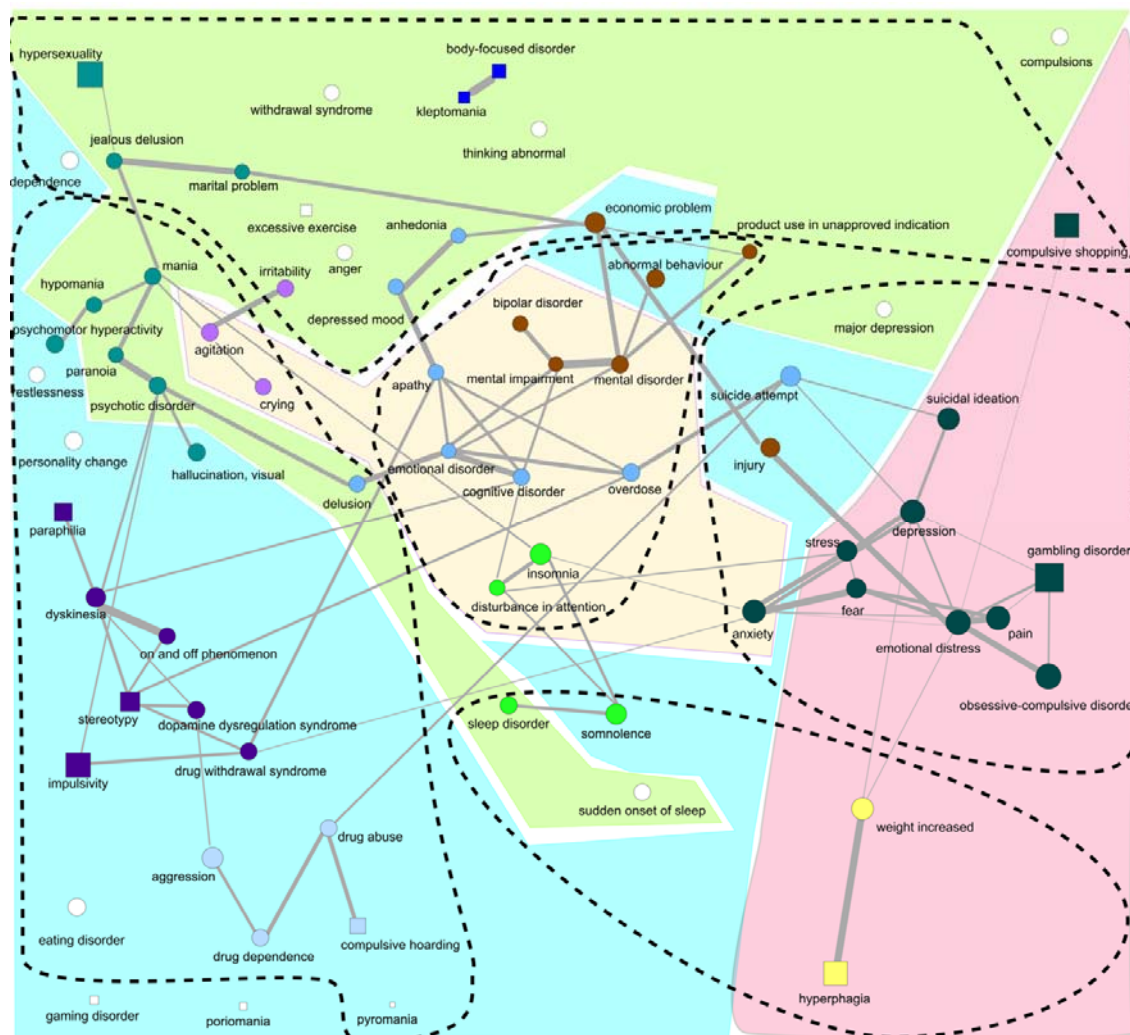
304

305 The three representations were considered as three different perspectives on the same  
 306 phenomenon and composed into a single visualization for each population (**Figure 4, 5**). For

307 a detailed description of the identified clusters, contextualized within the existing literature,  
308 see the discussion (paragraph 4.4).



309  
310 **Figure 4. The secondary impact of aripiprazole-induced impulsivity.** The network shows the events disproportionately reported with  
311 aripiprazole-related impulsivity and their pattern of co-reporting. Drug-induced impulsivity manifestations are shown as squares and other  
312 events as circles. Node colors identify clusters from the Ising estimation, dashed contours for the Ising estimation, and colored contours for the  
313 PPMI estimation. The link width represents the weight of the links of the Ising, here chosen over the others because they are fewer and more  
314 conservative. The layout has been manually adjusted to reduce the overlapping. The layout calculated using a spring model with, as weight,  
315 the weights from the individual networks and the average of the weights of the three networks, after rescaling them from 0 to 1, is shown in  
316 the supplementary material.

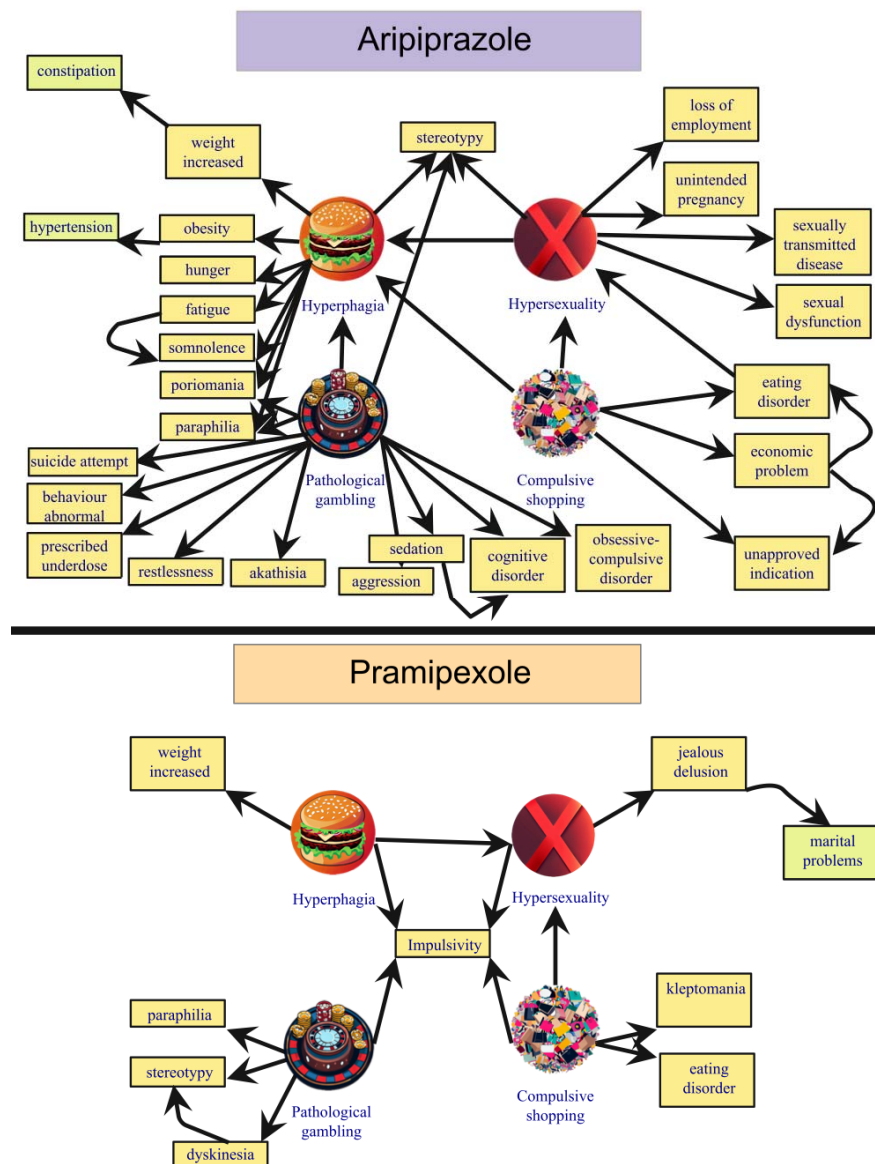


317  
318  
319  
320  
321  
322  
323  
324  
325  
326  
327  
328  
329  
330  
331  
332

**Figure 5. The secondary impact of pramipexole-induced impulsivity.** The network shows the events disproportionately reported with pramipexole-related impulsivity and their pattern of co-reporting. Drug-induced impulsivity manifestations are shown as squares and other events as circles. Node colors identify clusters from the Ising estimation, dashed contours for the estimation, and colored contours for the PPMI estimation. The link width represents the weight of the links of the Ising, here chosen over the others because they are fewer and more conservative. The layout has been manually adjusted to reduce the overlapping. The layout calculated using a spring model with, as weight, the weights from the individual networks and the average of the weights of the three networks, after rescaling them from 0 to 1, is shown in the supplementary material.

### 3.4 Bayesian Network: The secondary impact of drug-induced impulsivity

The Bayesian Network yielded insights into the directional associations between co-reported events (see **Figure 6** and OSF repository [55]). High out-degree centrality identified pivotal events that likely heightened the likelihood of reporting other events (Figure S9-S10). Since this directed network only generates hypotheses, we preferred temporal terminology (i.e., preceding and following) to causal terminology even if no data on actual temporal sequences was included in the analyses.



333  
 334 **Figure 6. The secondary impact of the main drug-induced impulsivity, aripiprazole and pramipexole.** The ego-networks extracted  
 335 from the Bayesian Network show the potential direction of the co-reporting relationships between the events, thus providing insight into the  
 336 direct and indirect impact of drug-induced impulsivity. Nodes linked to hyperphagia, hypersexuality, pathological gambling, and compulsive  
 337 shopping are represented. Only out-neighbors of order equal or less than 1 are shown here, together with out-neighbors of order 2 considered  
 338 relevant for clinical interpretation.

339  
 340 In pramipexole recipients, anxiety (3.55), emotional distress (2.92), and gambling (2.30)  
 341 attained the highest out-degree centrality. Anxiety preceded insomnia (with irritability,  
 342 somnolence, and attention disturbances), stress and depression (with suicide), fear, OCD, and  
 343 emotional distress. Emotional distress preceded pain and injury (with major depression and  
 344 economic problems), abnormal thinking and behavior, weight gain, and pathologic gambling.



345 Furthermore, hypersexuality preceded delusional jealousy and marital difficulties,  
346 compulsive shopping stealing behaviors, and hyperphagia weight increase.

347 In aripiprazole recipients, economic problems (5.97), gambling (4.15), and hyperphagia  
348 (2.33) attained the highest out-degree centrality. Economic problems preceded theft,  
349 hoarding, divorce, loss of employment, homelessness, suicide, sex dysfunction, sexually  
350 transmitted diseases, and eating disorder. Gambling preceded aggressivity, suicide, cognitive  
351 disorders, hyperphagia, and paraphilia. Hyperphagia preceded somnolence and fatigue (with  
352 stress, attention disturbances, myalgia, cough), hunger, weight increase (with constipation),  
353 obesity (with hypertension), compulsive wandering, and paraphilic disorders. Anxiety  
354 preceded depression (with sleep disorders and suicide), fear and panic attacks (with  
355 relationship issues), pain and injury (with emotional distress, disability, anhedonia, and  
356 economic problems). Hypersexuality preceded sexual dysfunction, sexually transmitted  
357 diseases, unintended pregnancy, and loss of employment. Compulsive shopping preceded  
358 eating disorders and economic problems.

359

## 360 4. Discussion

### 361 4.1 Summary and Key Results

362 We investigated aripiprazole and pramipexole reports to capture the syndromes and sub-  
363 syndromes related to drug-induced impulsivity.

364 The event-event disproportionality analysis revealed signs and symptoms commonly reported  
365 alongside impulsivity, thus delineating an impulsivity syndrome, separately for aripiprazole  
366 and pramipexole recipients. The impulsivity syndrome encompassed mainly psychosocial  
367 events but also organic conditions.

368 The network analysis identified meaningful clusters, such as delusional jealousy (also known  
369 as Othello syndrome [56]) and dopamine dysregulation syndrome (i.e., the excessive use of  
370 levodopa) in pramipexole recipients, and obesity-hypoventilation syndrome (historically  
371 Pickwickian syndrome) and social issues in aripiprazole recipients. In particular, employing  
372 more sensitive network analyses like Phi and PPMI generated more interconnected networks,  
373 which identified potential macro-clusters combining several smaller clusters identified by the  
374 Ising model.

375 Crucially, potential causal mechanisms and secondary consequences of drug-induced  
376 impulsivity can be highlighted by Bayesian Network methods, providing targets for potential  
377 interventions. Anxiety and economic problems emerged as pivotal events that could be  
378 potentially targeted to disrupt the chain of events and alleviate the burden of drug-induced

379 impulsivity: for instance, monitoring and effectively managing anxiety or providing financial  
380 guidance or legal guardianship to prevent wasteful spending. Since marital problems affect  
381 caregivers' QoL and increase the risk of early placement in nursing homes [22], addressing  
382 delusional jealousy and economic problems, identified as factors preceding marital problems,  
383 may be critical for preserving wellbeing in pramipexole recipients.

384 In order to better contextualize and qualify these findings, we now discuss in detail the results  
385 of case retrieval, disproportionality analysis, network analysis, Bayesian network, and the  
386 limits and conclusions of the study.

#### 387 4.2 Case Retrieval

388 Our findings align with established risk factors, including male gender and younger age  
389 [57,58], Parkinson's Disease (PD) [59,60] and depression [61]. Commonly reported  
390 impulsivity manifestations included the "four knights"[9] (i.e., gambling, shopping,  
391 hyperphagia, and hypersexuality), garnering special attention due to their pronounced impact  
392 on QoL. Other manifestations were body-focused repetitive behaviors, paraphilic disorders,  
393 and hoarding.

#### 394 4.3 Disproportionality analysis: the drug-induced impulsivity syndrome

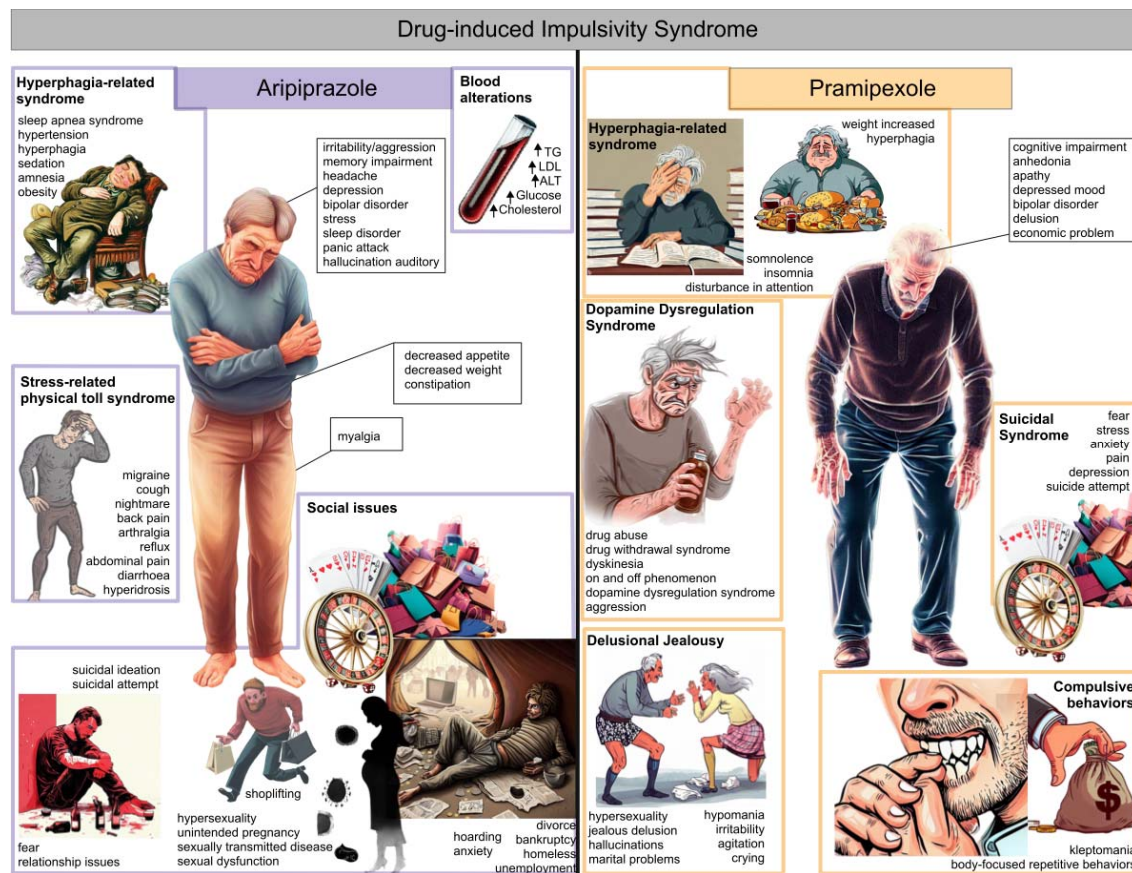
395 By performing the event-event disproportionality analysis within each drug population  
396 separately, comparing reports involving impulsivity with those encompassing various  
397 reactions – other than impulsivity – to the same drug, we addressed indication bias and other  
398 confounding factors. This comparative analysis served as a rigorous filter, allowing us to sift  
399 through the complex data and unveil the genuine characteristics associated with impulsivity,  
400 as well as those arising from the dynamic interaction between impulsivity and the underlying  
401 drug or disease, excluding traits tied solely to the underlying drug or disease.

402 This approach revealed a complex syndrome, characterized by psychosocial, cognitive,  
403 psychosomatic, and metabolic events. The syndromes identified for impulsivity within  
404 pramipexole and aripiprazole recipients differ significantly. Multiple factors may contribute  
405 to the seemingly higher burden on QoL observed with aripiprazole-induced impulsivity, with  
406 functional (or psychosomatic) manifestations and social issues impacting work, relationships,  
407 and economics. Pramipexole is primarily administered to older patients with  
408 hypodopaminergic conditions, characterized by motor impairment and reduced motivational  
409 drive. These patients, well managed and supported by caregivers because of the later onset  
410 and clear neurologic origin of the disease, may experience a mitigated drug-induced  
411 impulsivity burden. Conversely, aripiprazole is prescribed to younger patients with mood and  
412 psychotic disorders, often linked to hyperdopaminergic states and a pre-existing diathesis for

413 impulsivity. Challenges for caregivers and social support are heightened in these cases due to  
414 earlier onset, psychiatric origins, and stigma, potentially leading to a greater burden. Further,  
415 over a third of aripiprazole cases were submitted by lawyers. This may be explained either by  
416 a potentially malicious overreporting for legal compensation (cfr., Abilify lawsuit) [62] or by  
417 a reaction to underdiagnosis by physicians, who may be hesitant to attribute behavioral  
418 changes to the medication when underlying psychiatric conditions are present. In reports filed  
419 by lawyers, the desire to win legal compensation may have prompted more detailed  
420 descriptions of the impact of impulsivity on QoL, or possibly even exaggerated the impact,  
421 thus contributing to the observed differences between the two drugs. Intriguingly, there could  
422 also be an ascertainment bias, as neurologists prescribing pramipexole may be less aware of  
423 psychiatric issues compared to psychiatrists prescribing aripiprazole.

#### 424 4.4 Network Analysis: sub-syndromes

425 Network analysis in pharmacovigilance, complementary to other unsupervised  
426 approaches such as vigiGroup [63], is a promising tool to detect potential syndromes and  
427 subsyndromes, to help the characterization of signals. Employing three estimation methods,  
428 the network analysis revealed potential subsyndromes associated with specific impulsivity  
429 expressions in the two populations (**Figure 7**). The Ising delineated well-defined clusters,  
430 while PPMI and  $\phi$  emphasized inter-clusters relationships.



431

432

**Figure 7. Drug-induced impulsivity syndrome, aripiprazole and pramipexole.** The main syndrome, representing one or more strongly interconnected central clusters of symptoms and signs identified through network analysis, is depicted as the central figure. Other potential sub-syndromes are shown on the sides highlighted with a colored square.

433

434

435

436

437

438

439

440

441

442

443

444

445

446

447

448

449

By incorporating various expressions of impulsivity, we anticipated that the central cluster would encompass the key features of impulsivity regardless of its form, whether they act as risk factors or consequences of impulsivity. In both populations, cognitive and mood disorders (e.g., cognitive and memory impairment, bipolar disorder, depression) were included in the central cluster. Notably, they have been recorded as frequently associated with drug-induced impulsivity and contributing to disability development [64]. Obesity-hypoventilation syndrome [65], involving weight gain, cognitive and sleep disorders, and sedation, was consistent in both populations but seemingly heavier in aripiprazole recipients, which also reported obesity, sleep apnoea syndrome, hypertension, and metabolic blood alterations (increased lipids, transaminases, and glucose in the blood), supporting the observed link between hyperphagia and diabetes onset [66].

For aripiprazole recipients (Figure 4), the central cluster also included panic attack and auditory hallucinations, sleep disorders, decreased appetite, and stress. Stress was further connected to a psychosomatic sub-syndrome involving irritability, migraine, back and

450 abdominal pain, reflux, diarrhoea, constipation, and hyperhidrosis. Gambling and shopping  
451 were linked to pervasive social issues (hoarding, unemployment, homeless, bankruptcy,  
452 divorce), theft, and suicidal ideation and attempts (already observed during  
453 hyperdopaminergic impulsive states [67]). Hypersexuality was linked to unintended  
454 pregnancy, sexually transmitted diseases, and sexual dysfunction.

455 Among pramipexole recipients (Figure 5), the central cluster also included apathy,  
456 delusion, and economic problems. The dopamine dysregulation sub-syndrome (a  
457 manifestation of pathological impulsivity marked by excessive levodopa use [68–70], co-  
458 administered with dopamine agonists to better control motor symptoms), involved on and off  
459 phenomenon (oscillations in effectiveness and motor and motivational symptoms), excessive  
460 levodopa use to avoid off phases, and dopamine agonist withdrawal syndromes (DAWS)  
461 upon discontinuation [71]. A cluster aligned with paranoid delusional jealousy (false and  
462 unwavering belief in the partner’s unfaithfulness), often seen in PD with drug-induced  
463 hypersexuality [72] and here characterized by delusional jealousy, hallucinations, irritability,  
464 crying, and marital problems. Notably, marital problems have been associated with early  
465 placement in nursing homes and worse prognosis [73]. We also found a cluster with fear,  
466 pain, stress, anxiety, depression, and suicidal ideation, indicative of the transformation of  
467 reward-driven impulsivity into stressful risk-averting compulsivity over time [74]. Finally,  
468 the co-reporting of two archetypal compulsive symptoms—body-focused repetitive behaviors  
469 and stealing behaviors—was evident.

#### 470 4.5 Bayesian Network: the secondary impact of drug-induced impulsivity

471 This interplay of events within the context of drug-induced impulsivity is intricate and  
472 multifaceted. Events reported alongside drug-induced impulsivity may result from  
473 impulsivity itself (like financial problems from gambling) or predispose individuals to  
474 impulsivity (e.g., bipolar disorder). Sometimes, events can both trigger and be exacerbated by  
475 drug-induced impulsivity (e.g., anxiety [75,76]). Sometimes events are concomitantly  
476 mentioned for precision, such as in cases of semantic overlap (e.g., theft and shoplifting, or  
477 injury and brain injury). Events associated with drug-induced impulsivity may even be  
478 synonyms for well-known impulsivity expressions (e.g., restlessness, referring to excessive  
479 wandering and poriomani), or could be the very reason for prescribing the drug, as seen in the  
480 off-label use of aripiprazole to prevent behavioral and cognitive decline in brain injury [77]  
481 or to address drug dependence [78,79]. In order to get insights into potential directional  
482 associations to attempt the formulation about clinically plausible causal sequences, we  
483 implemented a Bayesian Network. Anxiety emerged as a central factor, preceding insomnia,

484 irritability, cognitive impairment, stress, injury, pain (linked to disability and economic  
485 problems), depression, and even suicidal ideation. Drug-induced impulsivity manifestations  
486 appeared to exacerbate each other. Economic problems had the highest out-degree centrality  
487 among aripiprazole recipients, preceding theft, relationship difficulties, and suicidal ideation.  
488 The Bayesian Network provides clinicians with valuable insights on the pivotal nodes that  
489 could be targeted by interventions to disrupt the cascade of events and ameliorate the  
490 secondary impact of drug-induced impulsivity. It also highlighted secondary ramifications of  
491 main impulsivity manifestations: hypersexuality precedes marital problems through  
492 delusional jealousy in pramipexole recipients, while it precedes unintended pregnancy and  
493 sexually transmitted diseases in aripiprazole recipients; hyperphagia precedes weight increase  
494 in pramipexole recipients and obesity, somnolence, and cognitive impairment in aripiprazole.  
495 Marital problems, following delusional jealousy and economic problems in pramipexole  
496 recipients, may be of particular interest since they are associated with an early placement in  
497 nursing homes [73]. Finally, the Bayesian Network seems to support the higher secondary  
498 impact of drug-induced impulsivity in aripiprazole recipients.

#### 499 4.6 Limitations and Further Developments

500 While this study provides valuable insights into the intricate interplay of events related to  
501 drug-induced impulsivity and its subsequent implications, it is crucial to acknowledge its  
502 limitations.

503 Spontaneous reports, while uniquely granting access to patients' perspective, are susceptible  
504 to biases like under-reporting, missing data, and unverified reliability, preventing reliable  
505 incidence or prevalence estimates. The high contribution of reports from lawyers may have  
506 influenced the higher psychosocial impact attributed to aripiprazole-induced impulsivity.  
507 Nonetheless, this study sets the foundation for further studies and a potential score to assess  
508 the impact of ADRs on QoL.

509       Limitations in network analysis methodologies adopted include the Ising estimation's  
510 assumptions (pairwise interaction, linear effects, and binary variables), and the inability to  
511 account for time and severity in symptom manifestation. The incorporation of negative links  
512 could facilitate a more nuanced separation of symptoms that infrequently co-occur. The  
513 Bayesian Network lacks bidirectional relationships and cyclic feedback loops and would  
514 require the inclusion of all shared causes between any two events (causal Markov condition)  
515 to achieve its full capacity to illuminate causality. These limitations could be rectified by  
516 integrating clinical longitudinal data and embedding temporal aspects into the network  
517 analysis.

518 Looking ahead, a broader definition of drug-induced impulsivity could improve  
519 sensitivity in case retrieval. Conditions like suicide attempts, hypersomnia, obsessive-  
520 compulsive symptoms, explosive anger, personality changes, disturbance in attention, and  
521 drug dependence might represent different expressions of this underdefined condition,  
522 warranting further exploration [10,70].

#### 523 4.7 Conclusion

524 The profound impact of drug-induced impulsivity reverberates across patients and their  
525 families, encompassing psychosocial challenges and organic complications such as metabolic  
526 syndrome (in the case of hyperphagia), and sexual health issues (in the case of  
527 hypersexuality). Recognizing these potential consequences is crucial for informed  
528 pharmacological management and diligent patient monitoring. Network analysis has revealed  
529 intriguing co-reporting patterns among adverse events, leading to their classification as sub-  
530 syndromes. Notable examples include the emergency of obesity-hypoventilation syndrome  
531 with hyperphagia and associations of hypersexuality with delusional jealousy in pramipexole  
532 recipients and unintended pregnancy and sexually transmitted diseases in aripiprazole  
533 recipients. Our parallel approach effectively avoids the risk of disease-related diathesis  
534 compromising analytical integrity, enhancing the robustness of our findings.

535 For clinicians, this study emphasizes the potential burden of drug-induced impulsivity, and  
536 therefore the necessity of meticulous scrutiny into patients' medical histories. Factors such as  
537 age, gender, pre-existing mood disorders and family history should be red flags, warranting  
538 heightened vigilance. While transitioning to an alternative active ingredient may mitigate  
539 impulsivity, it is not always feasible or adequate. Monitoring for potential complications, as  
540 unveiled in our work (e.g., obesity-hypoventilation syndrome and delusional jealousy), is  
541 pivotal when such transitions are not a viable solution. For example, an overlooked  
542 delusional jealousy may result in marital problems and early nursing home placement.

543 Central to our findings is the pivotal realization that drug reactions rarely occur in isolation;  
544 instead, they manifest as syndromes with diverse signs and symptoms. These can be direct  
545 reactions to the drug itself, secondary consequences to the reaction, risk factors for the  
546 reaction, or comorbidities. Causal chains and loops can contribute to symptom aggravation  
547 and chronicity. Identifying syndromes and sub-syndromes, combining network strategies  
548 with traditional techniques and clinical judgment, proves a potent strategy for delving into the  
549 secondary impact of adverse drug reactions and fostering heightened awareness within  
550 clinical practice.

551 In sum, the intricate relationships between signs and symptoms, coupled with the insights  
552 from the Bayesian Network, underscore the multifaceted nature of drug-induced impulsivity.  
553 More significantly, it equips research, and secondarily clinicians, with indispensable tools to  
554 identify potential intervention points, decipher causal sequences, and mitigate the cascading  
555 secondary effects associated with drug-induced impulsivity. In doing so, this study  
556 contributes to advancing our comprehension and management of drug-induced impulsivity,  
557 ultimately enhancing the well-being and care of affected patients.

558

### 559 [Acknowledgements](#)

560 MedDRA®, version 25.0 was developed under the auspices of the International Council for  
561 Harmonization of Technical Requirements for Pharmaceuticals for Human Use.

562 Part of the work was presented orally at the SIF congress, 2023, in Rome.

563 Icons for figures 1, 2, 6, and 7 were obtained using Bing Image Creator.

564

### 565 [Declarations](#)

566 **Funding:** No specific funding supported this research.

567 **Conflicts of interest:** The authors declare no conflict of interest specific for this research.

568 **Ethics approval:** not applicable because spontaneous reports of the FAERS are anonymous and  
569 publicly available.

570 **Consent to participate:** not applicable because spontaneous reports of the FAERS are anonymous  
571 and publicly available.

572 **Consent for publication:** not applicable because spontaneous reports of the FAERS are anonymous  
573 and publicly available.

574 **Software used:** Analyses were performed using R (version 4.2.1)[80] and Python (version 3.8.16  
575 ) [81]. We relied on several essential packages for network analysis: *IsingFit*[47], *igraph*[82],  
576 *psych*[83], and *bnlearn*[35].

577 **Availability of data and material:** The data we used comes from the FDA Adverse Event Reporting  
578 System (FAERS), and is made publicly available by the FDA as quarterly data downloadable at  
579 <https://fis.fda.gov/extensions/FPD-QDE-FAERS/FPD-QDE-FAERS.html>. The algorithm for cleaning  
580 FAERS data is open-source at <https://github.com/fusarolimichele/DiAna>, and the cleaned database is  
581 available on an OSF repository[84] and through the R package DiAna[85].

582 **Code availability:** The code for the project is available on an OSF repository[55], the function for the  
583 Ising network is also available in the DiAna package (cfr. “network\_analysis()”)[85].

584



585 **Author contributions:** MF, SP, LM, conceptualized and designed the study. MF, SP, LM developed  
586 the methodology. The formal analysis was performed by MF, SP, LM, VG. MF, SP, VG performed  
587 the visualization. MF, SP, LM, VG wrote the original draft. All the authors strongly contributed to the  
588 interpretation of results, and to the review and editing of the draft. All the authors read and approved  
589 the final version.  
590

## 591 References

- 592 1. Engel GL. The need for a new medical model: a challenge for biomedicine. *Science*.  
593 1977;196:129–36.
- 594 2. Young A. The Anthropologies of Illness and Sickness. *Annu Rev Anthropol*. 1982;11:257–  
595 85.
- 596 3. Kleinman A, Eisenberg L, Good B. Culture, illness, and care: clinical lessons from  
597 anthropologic and cross-cultural research. *Ann Intern Med*. 1978;88:251–8.
- 598 4. Lorimer S, Cox A, Langford NJ. A patient’s perspective: the impact of adverse drug  
599 reactions on patients and their views on reporting. *J Clin Pharm Ther*. 2012;37:148–52.
- 600 5. Suh D-C, Woodall BS, Shin S-K, Santis ERH-D. Clinical and Economic Impact of  
601 Adverse Drug Reactions in Hospitalized Patients. *Ann Pharmacother*. 2000;34:1373–9.
- 602 6. Rolfes L, van Hunsel F, Taxis K, van Puijenbroek E. The Impact of Experiencing Adverse  
603 Drug Reactions on the Patient’s Quality of Life: A Retrospective Cross-Sectional Study in  
604 the Netherlands. *Drug Saf*. 2016;39:769–76.
- 605 7. Calvert M, Kyte D, Mercieca-Bebber R, Slade A, Chan A-W, King MT, et al. Guidelines  
606 for Inclusion of Patient-Reported Outcomes in Clinical Trial Protocols: The SPIRIT-PRO  
607 Extension. *JAMA*. 2018;319:483–94.
- 608 8. Haag S, Junge L, Lotz F, McGauran N, Paulides M, Potthast R, et al. Results on patient-  
609 reported outcomes are underreported in summaries of product characteristics for new drugs. *J*  
610 *Patient-Rep Outcomes*. 2021;5:127.
- 611 9. Weintraub D. Impulse control disorders in Parkinson’s disease: A 20-year odyssey. *Mov*  
612 *Disord Off J Mov Disord Soc*. 2019;34:447–52.
- 613 10. Fusaroli M, Raschi E, Contin M, Sambati L, Menchetti M, Fioritti A, et al. Impulsive  
614 Conditions in Parkinson’s Disease: a pharmacosurveillance-supported list. *Parkinsonism*  
615 *Relat Disord*. 2021;90:79–83.
- 616 11. Fusaroli M, Pellegrini L, Fusaroli R, Raschi E, Menchetti M, Poluzzi E. Behavioral  
617 excess and disruptive conduct: a historical and taxonomical approach to the origin of the  
618 “Impulse Control Disorders” diagnostic construct. *Addiction* [Internet]. 2022 [cited 2022 Nov  
619 21];n/a. Available from: <https://onlinelibrary.wiley.com/doi/abs/10.1111/add.16086>
- 620 12. Grall-Bronnec M, Victorri-Vigneau C, Donnio Y, Leboucher J, Rousselet M, Thiabaud E,  
621 et al. Dopamine Agonists and Impulse Control Disorders: A Complex Association. *Drug Saf*.  
622 2018;41:19–75.
- 623 13. Tippmann-Peikert M, Park JG, Boeve BF, Shepard JW, Silber MH. Pathologic gambling  
624 in patients with restless legs syndrome treated with dopaminergic agonists. *Neurology*.  
625 2007;68:301–3.
- 626 14. Cornelius JR, Tippmann-Peikert M, Slocumb NL, Frerichs CF, Silber MH. Impulse  
627 Control Disorders with the use of Dopaminergic Agents in Restless Legs Syndrome: a Case-  
628 Control Study. *Sleep*. 2010;33:81–7.

- 629 15. Fusaroli M, Raschi E, Giunchi V, Menchetti M, Rimondini Giorgini R, De Ponti F, et al.  
630 Impulse Control Disorders by Dopamine Partial Agonists: A Pharmacovigilance-  
631 Pharmacodynamic Assessment Through the FDA Adverse Event Reporting System. *Int J*  
632 *Neuropsychopharmacol.* 2022;25:727–36.
- 633 16. Béreau M, Fleury V, Bouthour W, Castrioto A, Lhommée E, Krack P.  
634 Hyperdopaminergic behavioral spectrum in Parkinson’s disease: A review. *Rev Neurol*  
635 (Paris). 2018;174:653–63.
- 636 17. Jeyadevan A, Bakeberg M, Byrnes M, Kenna J, McGregor S, Ghosh S, et al. Quality of  
637 life implications for elevated trait impulsivity in people with Parkinson’s disease. *Qual Life*  
638 *Res.* 2023;32:1143–50.
- 639 18. Leplow B, Renftle D, Thomas M, Michaelis K, Solbrig S, Maetzler W, et al.  
640 Characteristics of behavioural addiction in Parkinson’s disease patients with self-reported  
641 impulse control disorder and controls matched for levodopa equivalent dose: a matched case–  
642 control study. *J Neural Transm.* 2023;130:125–33.
- 643 19. Phu AL, Xu Z, Brakoulias V, Mahant N, Fung VSC, Moore GD, et al. Effect of impulse  
644 control disorders on disability and quality of life in Parkinson’s disease patients. *J Clin*  
645 *Neurosci.* 2014;21:63–6.
- 646 20. Skorvanek M, Rosenberger J, Minar M, Grofik M, Han V, Groothoff JW, et al.  
647 Relationship between the non-motor items of the MDS–UPDRS and Quality of Life in  
648 patients with Parkinson’s disease. *J Neurol Sci.* 2015;353:87–91.
- 649 21. Jesús S, Labrador-Espinosa MA, Adarmes AD, Méndel-Del Barrio C, Martínez-Castrillo  
650 JC, Alonso-Cánovas A, et al. Non-motor symptom burden in patients with Parkinson’s  
651 disease with impulse control disorders and compulsive behaviours: results from the  
652 COPPADIS cohort. *Sci Rep.* 2020;10:16893.
- 653 22. Schrag A, Hovris A, Morley D, Quinn N, Jahanshahi M. Caregiver-burden in parkinson’s  
654 disease is closely associated with psychiatric symptoms, falls, and disability. *Parkinsonism*  
655 *Relat Disord.* 2006;12:35–41.
- 656 23. Antonini A, Barone P, Bonuccelli U, Annoni K, Asgharnejad M, Stanzione P. ICARUS  
657 study: prevalence and clinical features of impulse control disorders in Parkinson’s disease. *J*  
658 *Neurol Neurosurg Psychiatry.* 2017;88:317–24.
- 659 24. Castillon G, Salvo F, Moride Y. The Social Impact of Suspected Adverse Drug  
660 Reactions: An analysis of the Canada Vigilance Spontaneous Reporting Database. *Drug Saf.*  
661 2019;42:27–34.
- 662 25. FAERS Quarterly Data Extract Files [Internet]. [cited 2022 Dec 24]. Available from:  
663 <https://fis.fda.gov/extensions/FPD-QDE-FAERS/FPD-QDE-FAERS.html>
- 664 26. Härmark L, van Hunsel F, Grundmark B. ADR Reporting by the General Public: Lessons  
665 Learnt from the Dutch and Swedish Systems. *Drug Saf.* 2015;38:337–47.
- 666 27. Härmark L, Raine J, Leufkens H, Edwards IR, Moretti U, Sarinic VM, et al. Patient-  
667 Reported Safety Information: A Renaissance of Pharmacovigilance? *Drug Saf.* 2016;39:883–  
668 90.

- 669 28. Inácio P, Cavaco A, Airaksinen M. The value of patient reporting to the  
670 pharmacovigilance system: a systematic review. *Br J Clin Pharmacol*. 2017;83:227–46.
- 671 29. Rolfes L, van Hunsel F, Wilkes S, van Grootheest K, van Puijenbroek E. Adverse drug  
672 reaction reports of patients and healthcare professionals-differences in reported information.  
673 *Pharmacoepidemiol Drug Saf*. 2015;24:152–8.
- 674 30. Watson S, Chandler RE, Taavola H, Härmark L, Grundmark B, Zekarias A, et al. Safety  
675 Concerns Reported by Patients Identified in a Collaborative Signal Detection Workshop  
676 using VigiBase: Results and Reflections from Lareb and Uppsala Monitoring Centre. *Drug*  
677 *Saf*. 2018;41:203–12.
- 678 31. Fusaroli M, Raschi E, Gatti M, De Ponti F, Poluzzi E. Development of a Network-Based  
679 Signal Detection Tool: The COVID-19 Adversome in the FDA Adverse Event Reporting  
680 System. *Front Pharmacol*. 2021;12:3542.
- 681 32. Epskamp S, Borsboom D, Fried EI. Estimating psychological networks and their  
682 accuracy: A tutorial paper. *Behav Res Methods*. 2018;50:195–212.
- 683 33. Yule GU. On the Methods of Measuring Association Between Two Attributes. *J R Stat*  
684 *Soc*. 1912;75:579–652.
- 685 34. Chen SF, Goodman J. An empirical study of smoothing techniques for language  
686 modeling. *Proc 34th Annu Meet Assoc Comput Linguist [Internet]*. USA: Association for  
687 Computational Linguistics; 1996 [cited 2023 Mar 17]. p. 310–8. Available from:  
688 <https://doi.org/10.3115/981863.981904>
- 689 35. Scutari M. Learning Bayesian Networks with the bnlearn R Package. *J Stat Softw*.  
690 2010;35:1–22.
- 691 36. Briganti G, Scutari M, McNally RJ. A tutorial on Bayesian Networks for  
692 psychopathology researchers [Internet]. OSF; 2021 [cited 2024 Mar 31]. Available from:  
693 <https://osf.io/h4vxa>
- 694 37. Fusaroli M, Giunchi V, DiAna. An open access toolkit for DIsproportionality ANALysis  
695 and other pharmacovigilance investigations in the FAERS. [Internet]. 2024. Available from:  
696 [https://github.com/fusarolimichele/DiAna\\_package](https://github.com/fusarolimichele/DiAna_package)
- 697 38. MedDRA [Internet]. [cited 2023 Feb 4]. Available from: <https://www.meddra.org/>
- 698 39. Fusaroli M, Giunchi V, Battini V, Puligheddu S, Khouri C, Carnovale C, et al.  
699 Standardization of drug names in the FDA Adverse Event Reporting System: The DiAna  
700 dictionary [Internet]. *medRxiv*; 2023 [cited 2023 Jun 15]. p. 2023.06.07.23291076. Available  
701 from: <https://www.medrxiv.org/content/10.1101/2023.06.07.23291076v1>
- 702 40. Norén GN, Hopstadius J, Bate A. Shrinkage observed-to-expected ratios for robust and  
703 transparent large-scale pattern discovery. *Stat Methods Med Res*. 2013;22:57–69.
- 704 41. Church KW, Hanks P. Word Association Norms, Mutual Information, and Lexicography.  
705 *Comput Linguist*. 1990;16:22–9.

- 706 42. Recchia G, Jones MN. More data trumps smarter algorithms: Comparing pointwise  
707 mutual information with latent semantic analysis. *Behav Res Methods*. 2009;41:647–56.
- 708 43. Role F, Nadif M. Handling the Impact of Low Frequency Events on Co-occurrence based  
709 Measures of Word Similarity - A Case Study of Pointwise Mutual Information. 2011.
- 710 44. Fusaroli M, Pelletti G, Giunchi V, Pugliese C, Bartolucci M, Necibi EN, et al. Deliberate  
711 Self-Poisoning: Real-Time Characterization of Suicidal Habits and Toxidromes in the Food  
712 and Drug Administration Adverse Event Reporting System. *Drug Saf [Internet]*. 2023 [cited  
713 2023 Feb 2]; Available from: <https://doi.org/10.1007/s40264-022-01269-x>
- 714 45. Pauline O, Robert M, Bernardeau C, Hlavaty A, Fusaroli M, Roustit M, et al. Assessment  
715 of Reported Adverse Events After Interchanging Between TNF- $\alpha$  Inhibitor Biosimilars in the  
716 WHO Pharmacovigilance Database. *BioDrugs [Internet]*. 2023 [cited 2023 Jun 12]; Available  
717 from: <https://doi.org/10.1007/s40259-023-00603-8>
- 718 46. Orre R, Bate A, Norén GN, Swahn E, Arnborg S, Edwards IR. A bayesian recurrent  
719 neural network for unsupervised pattern recognition in large incomplete data sets. *Int J*  
720 *Neural Syst*. 2005;15:207–22.
- 721 47. van Borkulo CD, Borsboom D, Epskamp S, Blanken TF, Boschloo L, Schoevers RA, et  
722 al. A new method for constructing networks from binary data. *Sci Rep*. 2014;4:5918.
- 723 48. Newman MEJ, Girvan M. Finding and evaluating community structure in networks. *Phys*  
724 *Rev E*. 2004;69:026113.
- 725 49. Newman MEJ. Fast algorithm for detecting community structure in networks. *Phys Rev*  
726 *E*. 2004;69:066133.
- 727 50. Jaccard P. The Distribution of the Flora in the Alpine Zone.1. *New Phytol*. 1912;11:37–  
728 50.
- 729 51. Rezaei M, Fränti P. Set Matching Measures for External Cluster Validity. *IEEE Trans*  
730 *Knowl Data Eng*. 2016;28:2173–86.
- 731 52. Gates AJ, Wood IB, Hetrick WP, Ahn Y-Y. Element-centric clustering comparison  
732 unifies overlaps and hierarchy. *Sci Rep*. 2019;9:8574.
- 733 53. Meilă M. Comparing Clusterings by the Variation of Information. In: Schölkopf B,  
734 Warmuth MK, editors. *Learn Theory Kernel Mach*. Berlin, Heidelberg: Springer; 2003. p.  
735 173–87.
- 736 54. Telesford QK, Joyce KE, Hayasaka S, Burdette JH, Laurienti PJ. The Ubiquity of Small-  
737 World Networks. *Brain Connect*. 2011;1:367–75.
- 738 55. Fusaroli M, Polizzi S, Menestrina L, Giunchi V. Unveiling the Hidden Toll of Drug-  
739 Induced Impulse Control Disorders. 2023 [cited 2023 Aug 20]; Available from:  
740 <https://osf.io/k9v6s/>
- 741 56. El Otmani H, sabiry S, Bellakhdar S, El Moutawakil B, Abdoh Rafai M. Othello  
742 syndrome in Parkinson’s disease: A diagnostic emergency of an underestimated condition.  
743 *Rev Neurol (Paris)*. 2021;177:690–3.

- 744 57. Weintraub D, Koester J, Potenza MN, Siderowf AD, Stacy M, Voon V, et al. Impulse  
745 control disorders in Parkinson disease: a cross-sectional study of 3090 patients. *Arch Neurol.*  
746 2010;67:589–95.
- 747 58. Santangelo G, Barone P, Trojano L, Vitale C. Pathological gambling in Parkinson’s  
748 disease. A comprehensive review. *Parkinsonism Relat Disord.* 2013;19:645–53.
- 749 59. Jiménez-Urbieta H, Gago B, Quiroga-Varela A, Rodríguez-Chinchilla T, Merino-Galán  
750 L, Oregi A, et al. Pramipexole-induced impulsivity in mildparkinsonian rats: a model of  
751 impulse control disorders in Parkinson’s disease. *Neurobiol Aging.* 2019;75:126–35.
- 752 60. Riddle JL, Rokosik SL, Napier TC. Pramipexole- and methamphetamine-induced reward-  
753 mediated behavior in a rodent model of Parkinson’s disease and controls. *Behav Brain Res.*  
754 2012;233:15–23.
- 755 61. Marín-Lahoz J, Sampedro F, Martínez-Horta S, Pagonabarraga J, Kulisevsky J.  
756 Depression as a Risk Factor for Impulse Control Disorders in Parkinson Disease. *Ann*  
757 *Neurol.* 2019;86:762–9.
- 758 62. Blum AW, Jacobson K, Grant JE. Legal settlements and the reporting of adverse drug  
759 events: Insights from the aripiprazole products liability litigation. *Psychiatry Res.*  
760 2022;309:114411.
- 761 63. Norén GN, Meldau E-L, Chandler RE. Consensus clustering for case series identification  
762 and adverse event profiles in pharmacovigilance. *Artif Intell Med.* 2021;122:102199.
- 763 64. Voon V, Sohr M, Lang AE, Potenza MN, Siderowf AD, Whetteckey J, et al. Impulse  
764 control disorders in parkinson disease: A multicenter case-control study. *Ann Neurol.*  
765 2011;69:986–96.
- 766 65. Masa JF, Pépin J-L, Borel J-C, Mokhlesi B, Murphy PB, Sánchez-Quiroga MÁ. Obesity  
767 hypoventilation syndrome. *Eur Respir Rev.* 2019;28:180097.
- 768 66. de Jonge P, Alonso J, Stein DJ, Kiejna A, Aguilar-Gaxiola S, Viana MC, et al.  
769 Associations between DSM-IV mental disorders and diabetes mellitus: a role for impulse  
770 control disorders and depression. *Diabetologia.* 2014;57:699–709.
- 771 67. Evans AH, Strafella AP, Weintraub D, Stacy M. Impulsive and compulsive behaviors in  
772 Parkinson’s disease. *Mov Disord Off J Mov Disord Soc.* 2009;24:1561–70.
- 773 68. Okai D, Samuel M, Askey-Jones S, David AS, Brown RG. Impulse control disorders and  
774 dopamine dysregulation in Parkinson’s disease: a broader conceptual framework. *Eur J*  
775 *Neurol.* 2011;18:1379–83.
- 776 69. De la Casa-Fages B, Grandas F. Dopamine Dysregulation Syndrome and Deep Brain  
777 Stimulation of the Subthalamic Nucleus in Parkinson’s Disease. *Neurol Res Int [Internet].*  
778 2011 [cited 2021 Jun 16];2011. Available from:  
779 <https://www.ncbi.nlm.nih.gov/pmc/articles/PMC3216377/>
- 780 70. Weintraub D, David AS, Evans AH, Grant JE, Stacy M. Clinical spectrum of impulse  
781 control disorders in Parkinson’s disease. *Mov Disord Off J Mov Disord Soc.* 2015;30:121–7.

- 782 71. Yu XX, Fernandez HH. Dopamine agonist withdrawal syndrome: A comprehensive  
783 review. *J Neurol Sci.* 2017;374:53–5.
- 784 72. Kataoka H, Sugie K. Delusional Jealousy (Othello Syndrome) in 67 Patients with  
785 Parkinson’s Disease. *Front Neurol.* 2018;9.
- 786 73. Aarsland D, Larsen JP, Tandberg E, Laake K. Predictors of Nursing Home Placement in  
787 Parkinson’s Disease: A Population-Based, Prospective Study. *J Am Geriatr Soc.*  
788 2000;48:938–42.
- 789 74. Lopez AM, Weintraub D, Claassen DO. Impulse Control Disorders and Related  
790 Complications of Parkinson’s Disease Therapy. *Semin Neurol.* 2017;37:186–92.
- 791 75. Goerlich-Dobre KS, Probst C, Winter L, Witt K, Deuschl G, Möller B, et al.  
792 Alexithymia-an independent risk factor for impulsive-compulsive disorders in Parkinson’s  
793 disease. *Mov Disord Off J Mov Disord Soc.* 2014;29:214–20.
- 794 76. Vriend C, Pattij T, van der Werf YD, Voorn P, Booij J, Rutten S, et al. Depression and  
795 impulse control disorders in Parkinson’s disease: Two sides of the same coin? *Neurosci*  
796 *Biobehav Rev.* 2014;38:60–71.
- 797 77. Plummer NR, Tam AW, Mulvaney CA, Preston NJ, Laha SK. Dopamine agonists for  
798 traumatic brain injury. *Cochrane Database Syst Rev [Internet].* 2018 [cited 2023 Apr 14];  
799 Available from:  
800 <https://www.cochranelibrary.com/cdsr/doi/10.1002/14651858.CD013062/full>
- 801 78. Feltenstein MW, Do PH, See RE. Repeated aripiprazole administration attenuates cocaine  
802 seeking in a rat model of relapse. *Psychopharmacology (Berl).* 2009;207:401–11.
- 803 79. Feltenstein MW, Altar CA, See RE. Aripiprazole blocks reinstatement of cocaine seeking  
804 in an animal model of relapse. *Biol Psychiatry.* 2007;61:582–90.
- 805 80. R: The R Project for Statistical Computing [Internet]. [cited 2023 Feb 4]. Available from:  
806 <https://www.r-project.org/>
- 807 81. Welcome to Python.org [Internet]. Python.org. 2023 [cited 2023 Feb 4]. Available from:  
808 <https://www.python.org/>
- 809 82. Csardi G, Nepusz T. The igraph software package for complex network research.
- 810 83. Revelle W. Procedures for Psychological, Psychometric, and Personality Research  
811 [Internet]. R package version 2.2.9. Northwestern University, Evanston, Illinois; 2022.  
812 Available from: <https://CRAN.R-project.org/package=psych>
- 813 84. Fusaroli M, Giunchi V. DiAna: Repository for FAERS cleaning and analysis. 2023 [cited  
814 2023 Aug 20]; Available from: <https://osf.io/zqu89/>
- 815 85. Fusaroli M, Giunchi V. DiAna R package: Advanced Disproportionality Analysis in the  
816 FAERS for Drug Safety. [Internet]. 2023 [cited 2023 Oct 21]. Available from:  
817 [https://github.com/fusarolimichele/DiAna\\_package](https://github.com/fusarolimichele/DiAna_package)

818

## 819 Supporting Information

- 820 • **Table S1. Expressions of pathological impulsivity.** MedDRA query and behavioral subqueries used for  
821 retrieving drug-induced impulsivity.
- 822 • **Table S2. Manifestation of impulsivity in the two populations investigated.**
- 823 • **Table S3. Features of pramipexole reports.** We compared cases of pramipexole-related pathological impulsivity  
824 vs any other report recording pramipexole. Chi-square test was performed for categorical values, Mann-Whitney  
825 for continuous ones, and p-values were corrected for multiple comparison using the Holm-Bonferroni method.
- 826 • **Table S4. Features of aripiprazole reports.** We compared cases of aripiprazole-related pathological impulsivity  
827 vs any other report recording aripiprazole. Chi-square test was performed for categorical values, Mann-Whitney  
828 for continuous ones, and p-values were corrected for multiple comparison using the Holm-Bonferroni method.
- 829 • **Table S5. Events disproportionately reported with aripiprazole-induced impulsivity.** Ordered by N.
- 830 • **Table S6. Events disproportionately reported with pramipexole-induced impulsivity.** Ordered by N.
- 831 • **Table S7. Nodes with highest degree-centrality.**
- 832 • **Table S8. Aripiprazole edges.** The ten strongest links for the three networks of aripiprazole are shown. Note that  
833 the links are undirected, therefore the two nodes may be switched.
- 834 • **Table S9. Pramipexole edges.** The ten strongest links for the three networks of pramipexole are shown.  
835 • Note that the links are undirected, therefore the two nodes may be switched.
- 836 • **Table S10. Aripiprazole clusters obtained from Ising and Phi estimation.** Phi and Ising clusters are shown side  
837 by side. Ising clusters are color-coded, to show the similarities with Phi.
- 838 • **Table S11. Pramipexole clusters obtained from Ising and Phi estimation.** Phi and Ising clusters are shown side  
839 by side. Ising clusters are color-coded, to show the similarities with Phi.
- 840 • **Figure S1. The secondary impact of aripiprazole-induced pathologic impulsivity.** The network shows the  
841 events disproportionately reported with aripiprazole-related impulsivity. Impulsivity is shown as squares, other  
842 events as circles. Node colors and contours identify the clusters for the three methods: Ising (A), Phi (B) and PPMI  
843 (C). The layout is calculated using a spring model with, as weight, the average of the three weights calculated,  
844 after rescaling them from 0 to 1.
- 845 • **Figure S2. The secondary impact of aripiprazole-induced pathologic impulsivity, Ising estimation.** The  
846 network shows the events disproportionately reported with aripiprazole-related impulsivity. Impulsivity is shown as  
847 squares, other events as circles. Node colors and contours identify the clusters for the Ising estimation. The layout  
848 is calculated using a spring model with, as weight, the links from the Ising.
- 849 • **Figure S3. The secondary impact of aripiprazole-induced pathologic impulsivity, Phi estimation.** The  
850 network shows the events disproportionately reported with aripiprazole-related impulsivity. Impulsivity is shown as  
851 squares, other events as circles. Node colors and contours identify the clusters for the Phi estimation. The layout is  
852 calculated using a spring model with, as weight, the links from the Phi.
- 853 • **Figure S4. The secondary impact of aripiprazole-induced pathologic impulsivity, PPMI estimation.** The  
854 network shows the events disproportionately reported with aripiprazole-related impulsivity. Impulsivity is shown as  
855 squares, other events as circles. Node colors and contours identify the clusters for the PPMI estimation. The layout  
856 is calculated using a spring model with, as weight, the links from the PPMI.
- 857 • **Figure S5. The secondary impact of pramipexole-induced pathologic impulsivity.** The network shows the  
858 events disproportionately reported with pramipexole-related impulsivity. Impulsivity is shown as squares, other  
859 events as circles. Node colors and contours identify the clusters for the three methods: Ising (A), Phi (B) and PPMI  
860 (C). The layout is calculated using a spring model with, as weight, the average of the three weights calculated,  
861 after rescaling them from 0 to 1.
- 862 • **Figure S6. The secondary impact of pramipexole-induced pathologic impulsivity, Ising estimation.** The  
863 network shows the events disproportionately reported with pramipexole-related impulsivity. Impulsivity is shown as  
864 squares, other events as circles. Node colors and contours identify the clusters for the Ising estimation. The layout  
865 is calculated using a spring model with, as weight, the links from the Ising.
- 866 • **Figure S7. The secondary impact of pramipexole-induced pathologic impulsivity, Phi estimation.** The  
867 network shows the events disproportionately reported with pramipexole-related impulsivity. Impulsivity is shown as  
868 squares, other events as circles. Node colors and contours identify the clusters for the Phi estimation. The layout is  
869 calculated using a spring model with, as weight, the links from the Phi.
- 870 • **Figure S8. The secondary impact of pramipexole-induced pathologic impulsivity, PPMI estimation.** The  
871 network shows the events disproportionately reported with pramipexole-related impulsivity. Impulsivity is shown as  
872 squares, other events as circles. Node colors and contours identify the clusters for the PPMI estimation. The layout  
873 is calculated using a spring model with, as weight, the links from the PPMI.
- 874 • **Figure S9. Degree centrality, pramipexole.**
- 875 • **Figure S10. Degree centrality, aripiprazole.**
- 876 • **Figure S11. Sankey showing comparison between clusters in PPMI and PHI, pramipexole.**
- 877 • **Figure S12. Sankey showing comparison between clusters in PPMI and Ising, pramipexole.**
- 878 • **Figure S13. Sankey showing comparison between clusters in Phi and Ising, pramipexole.**
- 879 • **Figure S14. Sankey showing comparison between clusters in PPMI and PHI, aripiprazole.**
- 880 • **Figure S15. Sankey showing comparison between clusters in PPMI and Ising, aripiprazole.**
- 881 • **Figure S16. Sankey showing comparison between clusters in PHI and Ising, aripiprazole.**
- 882