

## Spatiotemporal Trends in Group A Streptococcal Pharyngitis in the United States

Madeleine C. Kline<sup>1,2</sup>, Stephen M. Kissler<sup>1,2,3</sup>, Lilith K. Whittles<sup>4</sup>, Michael L. Barnett<sup>5,6</sup>, Yonatan H. Grad<sup>1,2,7</sup>

1. Department of Immunology and Infectious Diseases, Harvard T.H. Chan School of Public Health, Boston, MA, USA
2. Center for Communicable Disease Dynamics, Harvard T.H. Chan School of Public Health, Boston, MA, USA
3. Department of Computer Science, University of Colorado Boulder, Boulder, CO, USA
4. MRC Centre for Global Infectious Disease Analysis and NIHR Health Protection Research Unit in Modelling and Health Economics, School of Public Health, Imperial College London, Norfolk Place, London, W2 1PG, UK
5. Department of Health Policy and Management, Harvard T.H. Chan School of Public Health
6. Division of General Internal Medicine and Primary Care, Brigham and Women's Hospital, Harvard Medical School, Boston, MA, USA
7. Division of Infectious Diseases, Brigham and Women's Hospital, Harvard Medical School, Boston, MA, USA

Corresponding author:

Yonatan H. Grad

Harvard T.H. Chan School of Public Health

665 Huntington Ave

Boston, MA 02115

617-432-2275

[ygrad@hsph.harvard.edu](mailto:ygrad@hsph.harvard.edu)

Summary: The incidence of streptococcal pharyngitis varies across the U.S., with highest rates in the South and lowest in the West. On average, the yearly summer increase in cases begins in the South and progresses outwards to adjacent states.

45 **ABSTRACT**

46 Background

47 Group A *Streptococcus* (GAS) causes an estimated 5.2 million outpatient visits for pharyngitis  
48 annually in the United States (U.S.) with incidence peaking in winter, but the annual  
49 spatiotemporal pattern of GAS pharyngitis across the U.S. is poorly characterized.

50  
51 Methods

52 We used outpatient claims data from individuals with private medical insurance between 2010-  
53 2018 to quantify GAS pharyngitis visit rates across U.S. census regions, subregions, and states.  
54 We evaluated seasonal and age-based patterns of geographic spread and the association  
55 between school start dates and the summertime upward inflection in GAS visits.

56  
57 Results

58 The South had the most visits per person (yearly average 39.11 visits per 1000 people, 95% CI:  
59 36.21-42.01), and the West had the fewest (yearly average 17.63 visits per 1000 people, 95% CI:  
60 16.76-18.49). Visits increased earliest in the South and in school-age children. Differences in  
61 visits between the South and other regions were most pronounced in the late summer through  
62 early winter. Visits peaked earliest in central southern states, in December to January, and  
63 latest on the coasts, in March. The onset of the rise in GAS pharyngitis visits correlated with,  
64 but preceded, average school start times.

65  
66 Conclusions

67 The burden and timing of GAS pharyngitis varied across the continental U.S., with the South  
68 experiencing the highest overall rates and earliest onset and peak in outpatient visits.  
69 Understanding the drivers of these regional differences in GAS pharyngitis will help in  
70 identifying and targeting prevention measures.

## 71 INTRODUCTION

72 Group A *Streptococcus* (GAS; *Streptococcus pyogenes*) is a common human bacterial pathogen  
73 that causes a diverse spectrum of disease. GAS pharyngitis, known commonly as “strep throat,”  
74 is responsible for an estimated 5.2 million outpatient visits and 2.8 million antibiotic  
75 prescriptions each year in the U.S., accounting for 5.9% of all outpatient antibiotic prescriptions  
76 in children ages 3-9 years.<sup>1</sup> According to the Centers for Disease Control and Prevention (CDC),  
77 GAS accounts for 20-30% of pharyngitis cases in children and 5-15% of pharyngitis cases in  
78 adults.<sup>2</sup> GAS pharyngitis is more common in the winter and spring months,<sup>2-4</sup> but its seasonality  
79 and geography in the U.S. remains poorly characterized.

80  
81 Other common respiratory conditions have well-characterized spatiotemporal trends: epidemic  
82 waves of influenza usually start in the southern U.S., and seasonal peaks of respiratory syncytial  
83 virus (RSV) are typically earliest in Florida.<sup>5,6</sup> Environmental factors such as mean absolute  
84 humidity, vapor pressure, minimum temperature, and precipitation have been proposed as  
85 transmission modifiers for these viruses.<sup>5,6</sup> School-aged children play an important role in  
86 community influenza transmission and in the transmission and introduction of RSV into  
87 households.<sup>7,8</sup> Whether these factors similarly impact GAS pharyngitis transmission remains  
88 unclear.

89  
90 To address the need for improved characterization of GAS epidemiology in the U.S., we used  
91 outpatient insurance claims data from private insurers to assess geographic patterns of visits  
92 for GAS pharyngitis over the course of the year and to evaluate the association with the start of  
93 the school year.

## 94 METHODS

### 95 Study Population and Data Source

96 Retrospective outpatient claims data were extracted from the Merative™ MarketScan®  
97 Commercial Database, which is a convenience sample of 16.6-36.4 million annually-enrolled  
98 privately-insured individuals (5.1-11.6% of the total U.S. population, depending on the year).<sup>9</sup>  
99 These data include claims from outpatient care, pharmacy, and enrollment data from large  
100 health plans and employers covering employees and their families. The sample was restricted  
101 to individuals who were continuously enrolled for an entire year between 2010-2018 and  
102 included information on age group, sex, and state (**Table 1, Figure S1, Figure S2**).

### 103 Disease Incidence

104  
105 Visits prompted by GAS pharyngitis were identified by mapping codes from the *International*  
106 *Classification of Diseases, Clinical Modification* ninth (ICD9) or tenth (ICD10) revision to Clinical  
107 Classification Software (CCS) codes (**Table S1**).<sup>10</sup> Guidelines recommend GAS pharyngitis  
108 diagnosis by a rapid antigen detection test (RADT) or throat culture, rather than by clinical  
109 features alone.<sup>2,11</sup> Visits were thus included if a diagnosis code indicating GAS pharyngitis was  
110 the first or second diagnosis billed for the visit.

111  
112  
113 Yearly, quarterly, and monthly visits per 1,000 people within the 48 continental U.S. states plus  
114 Washington D.C., 9 subregions, and 4 regions (according to the Census Regions and Divisions of

115 the United States, **Tables S2 and S3**)<sup>12</sup> were calculated by dividing the number of visits in the  
116 respective time period by the number of people enrolled during that period in the respective  
117 geographic division and multiplying by 1,000. There was no clear secular trend in visits across  
118 years (**Figure S3**), and thus visits were averaged across all 9 years of observation and 95%  
119 confidence intervals were calculated under the assumption of normally distributed errors.  
120 There were no clear differences in age distributions by region; consequently, visits from all ages  
121 were included unless otherwise specified (**Figure S2**).

122  
123 To account for potential differences between the age and sex distribution of the MarketScan  
124 data and the general population, visit counts were weighted by their census-determined  
125 proportion of the population. State-level population counts were obtained from the 2011-2015  
126 American Community Survey (ACS) and accessed using the tidycensus R package<sup>13</sup>.

127  
128 **Statistical Analyses**  
129 *Regional Significance Testing*  
130 To assess regional differences in visit rates, yearly visits per person in each region were  
131 compared using Welch's two sample t-test. To assess differences in the seasonality of GAS visits  
132 across regions, visits in each region and month were compared to all other regions in that  
133 month using Welch's two sample t-test. Statistical significance was determined based on a  
134 significance level of 0.05 corrected for multiple hypothesis testing using the Bonferroni  
135 correction.

136  
137 *Seasonal Modeling*  
138 To characterize the seasonality in GAS pharyngitis visits by state or region, we fit sinusoids to  
139 data from the 9 years of observation using nonlinear least squares regression. Trends were  
140 modelled using the following equation:

$$141 \quad Y_i = A_i \cos\left(\omega(M_j - \varphi_i)\right) + o_i$$

142 where  $Y_i$  is the number of visits per thousand people in state or region  $i$ ,  $A_i$  is the amplitude for  
143 state/region  $i$  (difference between the maximum and minimum monthly visits per 1000 people  
144 in a year),  $\frac{2\pi}{\omega}$  is the period (the time required for one full cycle of visits),  $M_j$  is the month of  
145 observation  $j$  (taking values from 1-12 with 1 corresponding to January 1<sup>st</sup>),  $\varphi_i$  is the phase (the  
146 horizontal shift in months, so that  $\varphi_i$  is the month in which the maximum visits per 1000 people  
147 occurs), and  $o_i$  is the baseline visit rate (i.e., the mean number of visits per 1000 people in  
148 location  $i$ ). The period was fixed at 12 months ( $\omega = \frac{2\pi}{12}$ ). Estimates of the amplitude, phase, and  
149 offset were optimized using the *nls* function in R. The initial amplitude was specified as half the  
150 distance from the average maximum to minimum number of visits in the entire dataset. The  
151 initial phase was specified as the average month during which the maximum number of visits  
152 occurred. The initial offset was specified as the mean number of visits throughout the year.  
153 Confidence regions for sinusoid predictions were calculated via bootstrapping (see  
154 supplemental text for details).

155  
156 *Geographic Patterns*

157 Population-weighted state centroids from 2010 (calculated by the U.S. Census Bureau) were  
158 extracted from the USpopcenters R package.<sup>14,15</sup> We calculated subregion centroids using a  
159 population-weighted average of the state centroid. For the reference point, we used the  
160 population-weighted average between the East South Central and West South Central  
161 subregions, since their sinusoid phases had the earliest peaks of all the subregions and were  
162 very similar. We calculated the Euclidean distance from the reference point to the centroid of  
163 each state or subregion. We correlated the vector of distances for each state or subregion to  
164 the vector of sinusoid phases, representing peak timing, for each state or subregion using  
165 Pearson's correlation coefficient.

### 166 *School Start Time Correlation*

167 Data on 2019 school start dates was obtained from the Pew Research Center.<sup>16</sup> This dataset  
168 contains a 509-district sample of the >13,000 public school districts in the U.S., including the 10  
169 largest school districts in states with at least 10, and the 100 largest school districts in the  
170 country, representing an estimated 36% of public-school students. We filtered the data to  
171 include only continental U.S. states, yielding 497 school districts. School districts were grouped  
172 at the state and subregion level. We calculated the dates at which GAS pharyngitis visits were at  
173 their nadir by taking the average of the month with the fewest visits in each state or subregion  
174 for each of the 9 years of observation. We calculated minimum visit dates by subregion in all  
175 age groups together, and separately in those aged 0-4, 5-19, under 19, and over 19. We  
176 determined the relationship between the average school start date and minimum visit date in  
177 each state or subregion via Pearson's correlation coefficient. We repeated this analysis  
178 separately for those under and over 19 years of age. The 95% confidence interval on the  
179 correlation coefficient was calculated via bootstrapping (see supplemental text for further  
180 details).

181  
182  
183

## 184 **RESULTS**

185

### 186 **Difference in Disease Burden**

#### 187 *Yearly and Quarterly Differences*

188 Among the four census regions, the South had the highest mean number of GAS pharyngitis  
189 visits per 1000 people per year (39.11, 95% CI: 36.21-42.01) and the West had the lowest  
190 (17.63, 95% CI: 16.76-18.49); (**Figure S3**). At a subregional level, the East South Central region  
191 had the highest mean number of GAS pharyngitis visits per 1000 people per year (48.38, 95%  
192 CI: 42.40-53.37), while the Pacific West had the lowest (12.39, 95% CI: 11.57-13.22); (**Figure S4,**  
193 **Table S4**). Mean GAS pharyngitis visit rates in the South and the West each differed significantly  
194 from those in all other regions ( $p < 0.05$ ) (**Figure S3**).

195

196 Differences in age distributions across regions were insufficient to explain regional differences  
197 in GAS pharyngitis visits. The overall age distribution appears similar across all regions (**Figure**  
198 **S2, Table S5**). In the South, a relatively greater share of GAS pharyngitis visits was attributable  
199 to 0–4-year-olds than in other regions (26% in the South compared to 18% in the West), but  
200 this age group made up a similar proportion of the population in each region (5% in the South,

201 6% in the West). In all regions, individuals under 19 years old contributed the most GAS  
202 pharyngitis visits (range: 67% in the West – 77% in the Northeast). This group made up a similar  
203 fraction of each region’s overall population (range: 26.8% in the Northeast – 28.7% in the  
204 Midwest).

205  
206 During each quarter of the year, the West maintained a lower mean number of visits per 1,000  
207 people than the other three regions (**Table S6**). The differences in mean visits per 1,000 people  
208 between the South, the Northeast, and the Midwest were more pronounced in the summer/fall  
209 (July through December) than in the winter/spring (January through June) (**Figure S5, Table S5**).

210  
211 *Monthly Differences*  
212 To better resolve the seasonal patterns in GAS pharyngitis incidence, we compared monthly  
213 GAS pharyngitis visits across regions and subregions. Across regions, GAS pharyngitis visits were  
214 more common in the winter months, with visits nadiring in the summer months before  
215 inflecting upwards in early autumn and peaking in the first few months of the calendar year  
216 (**Figure 1**). In the South, for example, the January mean was 3.78 (95% CI: 3.36-4.21) visits per  
217 1000 people, while in July the mean was 1.80 (95% CI: 1.67-1.93) visits per 1000 people. In the  
218 West, visits were much lower; the January mean was 1.76 (95% CI: 1.62-1.90) visits per 1000  
219 people, while in July it was 0.98 (95% CI: 0.93-1.03). At a subregional level, the East South  
220 Central region had on average 4.70 (95% CI: 4.13-5.26) visits per 1000 people in January and  
221 1.88 (95% CI: 1.71-2.06) visits per 1000 people in July, while the Pacific West had on average 1.2  
222 (95% CI: 1.09-1.31) visits per 1000 people in January and 0.76 (95% CI: 0.71-0.81) visits per 1000  
223 people in July (**Figure S6**). Comparisons across regions and subregions revealed statistically  
224 significant differences in monthly GAS pharyngitis incidence in the second half of the year  
225 (**Figure S7**). These trends in visits between subregions over the course of the year were  
226 reflected across all age groups. Throughout the year, most visits came from those under 19  
227 years of age (**Figure S8**).

228  
229 **Differences in Peak Timing**  
230 We estimated the timing of peak GAS pharyngitis incidence using sinusoidal models fit to  
231 monthly GAS pharyngitis visits at the state, subregional, and regional levels. The annual peak in  
232 GAS pharyngitis visits occurred earliest in the South, followed by peaks in adjacent states and  
233 through the Mountain West, with the latest peaks in coastal states (**Figure 2, Figure S9**). The  
234 states with the earliest peaks were in the East South Central (phase: 1.50, 95% CI 1.22-1.79,  
235 where 1.0 represents January 1<sup>st</sup>) and West South Central (phase: 1.49, 95% CI 1.20-1.77)  
236 subregions (**Figures S10 and S11**). The Mountain West had the next peak, (phase: 1.68, 95% CI  
237 1.49-1.88) with the latest peaks on the coasts in March (Pacific West phase: 2.35, 95% CI 2.10-  
238 2.61; New England phase: 2.62, 95% CI 2.44-2.81). Louisiana (phase: 0.81, 95% CI 0.41-1.21) and  
239 Mississippi (phase: 0.86, 95% CI 0.43-1.3) peaked particularly early, in December (**Table S7**).

240  
241 The annual peak time of GAS pharyngitis incidence correlated with geographic distance from  
242 the population-weighted centroid of the South (near Homer, Louisiana; latitude 32.83,  
243 longitude -93.01) (**Figures S12 and S13**). Greater distances from the southern reference point

244 correlated with later peak times at both the subregional (Pearson's  $r = 0.73$ , **Figure S12**) and  
245 state (Pearson's  $r = 0.58$ , **Figure S13**) levels.

246

### 247 **School Start Date Analysis**

248 School start dates correlated with the nadir in GAS pharyngitis visits, at state and subregional  
249 levels (state: Pearson's  $r = 0.84$ , 95% CI: 0.82-0.86, subregional: Pearson's  $r = 0.85$ , 95% CI: 0.76-  
250 0.92) (**Figure 3, Figures S14-16**). These correlations held in both the under 19 population  
251 (Pearson's  $r = 0.82$ , 95% CI: 0.72-0.88) and the over 19 population (Pearson's  $r = 0.89$ , 95% CI:  
252 0.76-0.97). In all subregions and states, the nadir date preceded the school start date (mean  
253 number of days preceding by subregion: 36.22, range= 28-47 days, **Figure S14**; mean number of  
254 days preceding by state: 33.47, range = 14.9-48.5; **Figures S15 and S16**). The subregional  
255 minimum visit dates occurred first in those 5-19 years old, followed by those 0-4 years old, and  
256 then those over 19 years old (**Figure S17**).

257

### 258 **DISCUSSION**

259 Our results expand on estimates of the seasonality and incidence of GAS pharyngitis in the  
260 U.S.<sup>1,3,17</sup> Visits for GAS pharyngitis were higher in the South, and particularly the East South  
261 Central and West South Central subregions, than other regions throughout the year, especially  
262 from July to December. The Pacific West subregion documented the fewest GAS pharyngitis  
263 visits throughout the year. Annually, GAS pharyngitis incidence began to rise earliest in the  
264 same southern subregions that had the highest burden of disease, and peaked latest in coastal  
265 regions. The annual increase in visits was first observed in southern states, particularly in  
266 Louisiana and Mississippi, followed by the rest of the country roughly in order of increasing  
267 distance from the South. Visits increased first in the 5–19-year-old age group, followed by the  
268 0–4-year-old age group and then the over 19-year-old age group across all subregions. This  
269 geographic pattern of increasing GAS pharyngitis cases correlated with, but preceded, school  
270 start dates.

271

272 The factors driving higher rates of GAS pharyngitis visits and the earliest rise in cases in the  
273 South are unclear. This could represent conditions that promote GAS pharyngitis, including  
274 those relating to poverty and social inequality<sup>18</sup> or to other infections. GAS pharyngitis  
275 spatiotemporal patterns were similar to trends in influenza and RSV.<sup>5</sup> Some of the drivers for  
276 those pathogens, such as climatic factors, may also contribute to the trends in GAS pharyngitis.  
277 Alternatively, and more speculatively, the extent of asymptomatic carriage of GAS (nearly 50%  
278 in children ages 3-12<sup>4</sup>) may result in false positive RADTs in the context of viral pharyngitis in  
279 hosts carrying GAS, such that the trends of viral infections may contribute to the observed  
280 trends of GAS pharyngitis.

281

282 Similarly, it is unclear what explains the low rates of GAS pharyngitis visits in the Pacific West  
283 subregion. This could be due to local differences in GAS strains and their propensity to cause  
284 pharyngitis, fewer susceptible hosts due to increased immunity from infection or a cross-  
285 protective pathogen, or environmental, social, or behavioral factors that reduce  
286 transmissibility. Systematic underreporting in private insurance claims in this region could also  
287 contribute to low observed rates.

288  
289 Nadirs in GAS pharyngitis visits preceded and correlated with school start dates. Subregions in  
290 the South with earlier upticks in GAS pharyngitis visits also started school earlier than coastal  
291 subregions. Given that uptick dates preceded school start dates by over a month, it is unlikely  
292 that school attendance initiated transmission in a given season, but changes in contact patterns  
293 among children associated with the start of school may facilitate both the spread of GAS  
294 pharyngitis, like with other respiratory infections,<sup>19</sup> and its ascertainment. The age pattern of  
295 epidemic onset, which occurred first in children aged 5-19 years, followed by those 0-4 years  
296 old and then adults over 19 years old, could implicate school-age children as an important  
297 infection-control target for GAS. Further examination of the relationship between rates of GAS  
298 pharyngitis and school closures enacted as part of COVID-19 response could help elucidate the  
299 role of school as a nidus of community spread of GAS pharyngitis.

300  
301 Trends in GAS pharyngitis may indicate broader trends in GAS disease and differences in  
302 transmission mechanisms between different GAS clinical syndromes. Invasive GAS (iGAS)  
303 infections are highly morbid infections that occur when GAS invades a typically sterile body site,  
304 but their connection to GAS pharyngitis remains unclear.<sup>20</sup> GAS necrotizing fasciitis has been  
305 shown not to follow seasonal patterns, although this may be due to small sample size, while  
306 overall iGAS cases are seasonal in the U.S.<sup>3,21</sup> After reported iGAS cases in the U.S. declined by  
307 about 25% during the COVID-19 pandemic, there was an increase in iGAS infections in the U.S.  
308 in the 2022-2023 season.<sup>22</sup> Whether this represents a particularly invasive strain, or increased  
309 population susceptibility resulting in higher rates of severe disease remains to be determined.  
310 Similarly, GAS pharyngitis rates also increased in the 2022-2023 season.<sup>23</sup>

311  
312 Limitations to this study include that the data capturing GAS-related visits are a convenience  
313 sample of privately insured individuals in the U.S. Potential bias could also arise from  
314 geographic heterogeneity in insurance and care access and from restricting the dataset to  
315 individuals continuously enrolled over the course of the year, thus excluding people who  
316 changed insurers or moved states frequently. All visits where GAS pharyngitis was the primary  
317 or secondary diagnostic code were included, but there may have been differences in how  
318 providers across different states or hospital systems bill for this condition. School start data was  
319 not sampled comprehensively. Lastly, analyses at the state, subregion, and regional levels may  
320 not reflect local variation.

321  
322 In conclusion, GAS pharyngitis was observed more and peaked earliest in the South compared  
323 to other regions. The Pacific West had fewer GAS-related visits than other subregions, and visits  
324 in coastal subregions peaked latest. Across all regions, visits increased first in those 5-19 years  
325 old, suggesting this age group is important for community transmission. As GAS pharyngitis  
326 causes a high burden of disease annually and is a major driver of antibiotic prescriptions in the  
327 U.S., the spatiotemporal patterns reported here can aid in designing effective surveillance  
328 programs and in allocating resources to reduce its incidence.

329  
330  
331



332 **MAIN FIGURES AND TABLES**

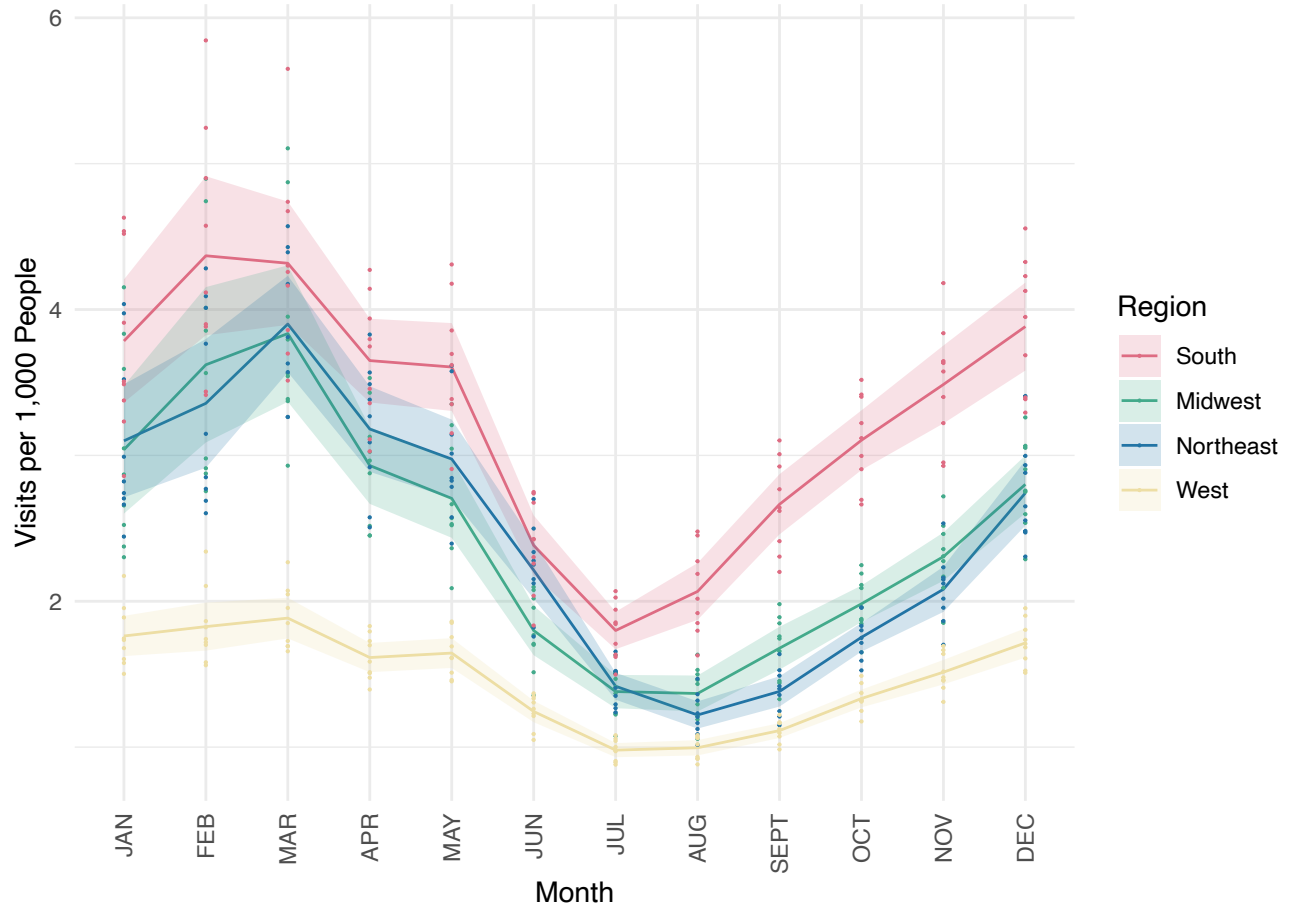
333 **Table 1: Study Population Characteristics.** This table reports the mean and range in the annual  
334 number of individuals included in the MarketScan database (2010-2018) by sex, age group,  
335 region, and subregion.

<b>Category</b>	<b>Average Membership x10<sup>6</sup> (Range)</b>	<b>%</b>
<b>Total</b>	26.7 (16.6-36.42)	100
Sex		
Male	12.95 (8.07-17.77)	48.49
Female	13.75 (8.53-18.66)	51.51
Age Group		
0-4	1.5 (0.92-2.08)	5.60
5-9	1.79 (1.07-2.49)	6.71
10-19	4.15 (2.46-5.78)	15.55
20-29	3.53 (2.41-4.8)	13.22
30-39	3.9 (2.48-5.26)	14.62
40-49	4.74 (2.81-6.58)	17.77
50-59	5.21 (3.16-7.08)	19.51
60-69	1.88 (1.29-2.4)	7.03
Region		
Midwest	6.18 (4.01-8.95)	23.14
Northeast	4.92 (2.65-7.09)	18.44
South	10.34 (6.78-13.14)	38.75
West	5.25 (2.79-7.69)	19.68
Subregion		
East North Central	4.86 (3-7.3)	18.21
East South Central	1.7 (1.04-2.1)	6.37
Middle Atlantic	3.76 (1.96-5.69)	14.08
Mountain West	1.6 (0.94-2.24)	6.00
New England	1.16 (0.65-1.72)	4.36
Pacific West	3.65 (1.85-5.45)	13.68
South Atlantic	5.3 (3.71-6.44)	19.85
West North Central	1.32 (1-1.73)	4.93
West South Central	3.34 (2.03-4.83)	12.53

336

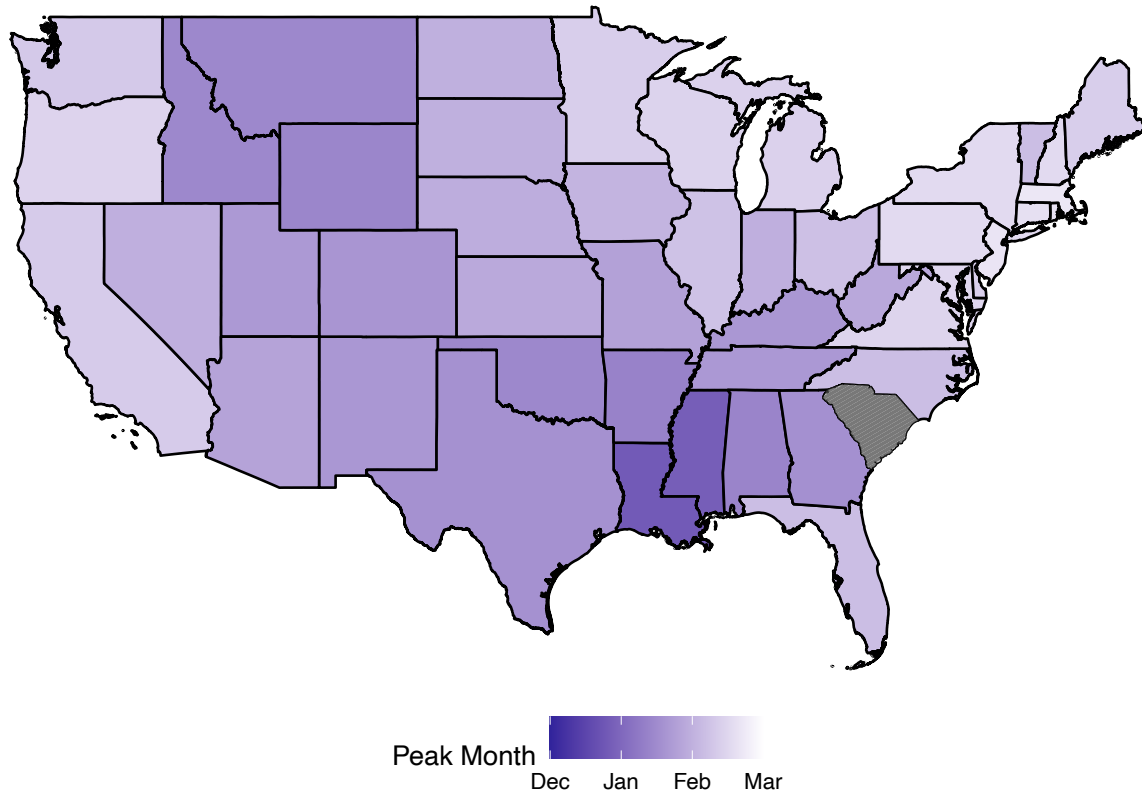
337

338



339  
340  
341  
342  
343  
344  
345  
346

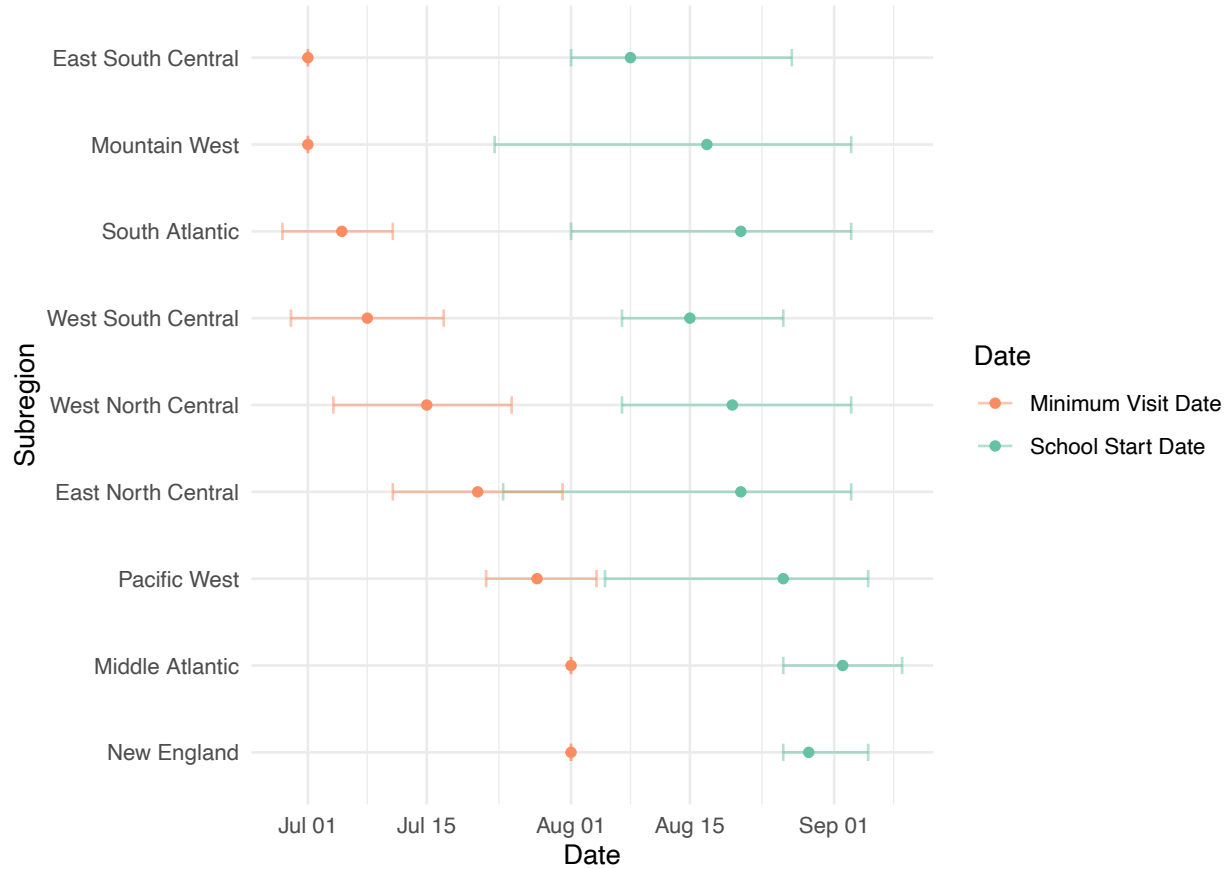
**Figure 1: Average monthly GAS pharyngitis visits per 1,000 people by census region.** Points depict the mean number of GAS pharyngitis visits observed in a given region (color), month (horizontal position), and year. The monthly mean values for each region are connected by solid lines. Shaded regions represent the 95% confidence intervals calculated assuming normally distributed errors pertaining to the monthly mean values, and thus depict year-to-year variation in GAS pharyngitis visit rates.



347  
348  
349  
350  
351  
352  
353

**Figure 2: Timing of peak GAS pharyngitis visits by U.S. state.** States are colored according to the estimated timing of peak GAS pharyngitis visits (phase of the sinusoidal fit to monthly GAS pharyngitis visits per 1,000 people across all ages). South Carolina is excluded from map according to the data use agreement. Darker colors indicate earlier peaks, and lighter colors indicate later peaks. See also the Supplemental Animation.

It is made available under a [CC-BY 4.0 International license](https://creativecommons.org/licenses/by/4.0/).



354  
355 **Figure 3: Relationship between subregion school start date and the nadir date of GAS**  
356 **pharyngitis visits.** Estimated GAS pharyngitis nadir dates (orange points) with 95% confidence  
357 intervals assuming normally distributed errors (whiskers) are depicted alongside mean school  
358 start dates (green points) and ranges (whiskers) in that subregion.  
359

360 **ACKNOWLEDGEMENTS**

361 *Author contributions:* M.C.K contributed to study design, conceptualization, and analysis, and  
362 drafted the manuscript. S.M.K contributed to study design, conceptualization, analysis and  
363 edited the manuscript. L.K.W. and M.L.B contributed to methodology and edited the  
364 manuscript. Y.H.G contributed to study design and conceptualization, edited the manuscript,  
365 and supervised the work.

366  
367 *Funding sources:* M.C.K. was supported by [grant award number T32GM144273] from the  
368 National Institute of General Medical Sciences. S.M.K. received funding from NIH T32 training  
369 grant 2 T32 AI 7535-21 A1. The content is solely the responsibility of the authors and does not  
370 necessarily represent the official views of the National Institute of General Medical Sciences or  
371 the National Institutes of Health. L.K.W. acknowledges funding from the Wellcome Trust [grant  
372 number 218669/Z/19/Z] and from the MRC Centre for Global Infectious Disease Analysis  
373 (reference MR/X020258/1), funded by the UK Medical Research Council (MRC). This UK funded  
374 award is carried out in the frame of the Global Health EDCTP3 Joint Undertaking. This project  
375 has been funded (in part) by contract 200-2016-91779 with the Centers for Disease Control and  
376 Prevention. Disclaimer: The findings, conclusions, and views expressed are those of the  
377 author(s) and do not necessarily represent the official position of the Centers for Disease  
378 Control and Prevention (CDC).

379  
380 *Data availability:* We cannot share disaggregated MarketScan or school start date data.  
381 MarketScan data are available via purchase of a commercial license. School start data was  
382 obtained via request to Pew Research Center ([info@pewresearch.org](mailto:info@pewresearch.org)). All code is available at  
383 [https://github.com/mkline1/StrepPharyngitis\\_Public](https://github.com/mkline1/StrepPharyngitis_Public)

384  
385 *Conflicts of interest:* No reported conflicts.

386  
387  
388  
389  
390  
391  
392  
393  
394  
395  
396  
397  
398  
399  
400  
401  
402  
403

404 **REFERENCES**

- 405 1. Lewnard, J.A., King, L.M., Fleming-Dutra, K.E., Link-Gelles, R., and Van Beneden, C.A. (2021).  
406 Incidence of Pharyngitis, Sinusitis, Acute Otitis Media, and Outpatient Antibiotic Prescribing  
407 Preventable by Vaccination Against Group A Streptococcus in the United States. *Clinical*  
408 *Infectious Diseases* 73, e47–e58. [10.1093/cid/ciaa529](https://doi.org/10.1093/cid/ciaa529).
- 409 2. Pharyngitis (Strep Throat): Information For Clinicians | CDC (2023).  
410 <https://www.cdc.gov/groupastrep/diseases-hcp/strep-throat.html>.
- 411 3. Kennis, M., Tagawa, A., Kung, V.M., Montalbano, G., Narvaez, I., Franco-Paredes, C., Vargas  
412 Barahona, L., Madinger, N., Shapiro, L., Chastain, D.B., et al. (2022). Seasonal variations and  
413 risk factors of Streptococcus pyogenes infection: a multicenter research network study.  
414 *Therapeutic Advances in Infection* 9, 20499361221132101. [10.1177/20499361221132101](https://doi.org/10.1177/20499361221132101).
- 415 4. Frenck, R.W.J., Laudat, F., Liang, J., Giordano-Schmidt, D., Jansen, K.U., Gruber, W.,  
416 Anderson, A.S., and Scully, I.L. A Longitudinal Study of Group A Streptococcal Colonization  
417 and Pharyngitis in US Children. *The Pediatric Infectious Disease Journal*,  
418 [10.1097/INF.0000000000004111](https://doi.org/10.1097/INF.0000000000004111). [10.1097/INF.0000000000004111](https://doi.org/10.1097/INF.0000000000004111).
- 419 5. Charu, V., Zeger, S., Gog, J., Bjørnstad, O.N., Kissler, S., Simonsen, L., Grenfell, B.T., and  
420 Viboud, C. (2017). Human mobility and the spatial transmission of influenza in the United  
421 States. *PLOS Computational Biology* 13, e1005382. [10.1371/journal.pcbi.1005382](https://doi.org/10.1371/journal.pcbi.1005382).
- 422 6. Pitzer, V.E., Viboud, C., Alonso, W.J., Wilcox, T., Metcalf, C.J., Steiner, C.A., Haynes, A.K., and  
423 Grenfell, B.T. (2015). Environmental Drivers of the Spatiotemporal Dynamics of Respiratory  
424 Syncytial Virus in the United States. *PLOS Pathogens* 11, e1004591.  
425 [10.1371/journal.ppat.1004591](https://doi.org/10.1371/journal.ppat.1004591).
- 426 7. Loeb, M., Russell, M.L., Moss, L., Fonseca, K., Fox, J., Earn, D.J.D., Aoki, F., Horsman, G., Van  
427 Caesele, P., Chokani, K., et al. (2010). Effect of Influenza Vaccination of Children on  
428 Infection Rates in Hutterite Communities: A Randomized Trial. *JAMA* 303, 943–950.  
429 [10.1001/jama.2010.250](https://doi.org/10.1001/jama.2010.250).
- 430 8. Munywoki, P.K., Koech, D.C., Agoti, C.N., Lewa, C., Cane, P.A., Medley, G.F., and Nokes, D.J.  
431 (2014). The Source of Respiratory Syncytial Virus Infection In Infants: A Household Cohort  
432 Study In Rural Kenya. *The Journal of Infectious Diseases* 209, 1685–1692.  
433 [10.1093/infdis/jit828](https://doi.org/10.1093/infdis/jit828).
- 434 9. Real World Evidence | Merative <https://www.merative.com/real-world-evidence>.
- 435 10. Clinical Classifications Software (CCS) for ICD-10-PCS (beta version) [https://hcup-](https://hcup-us.ahrq.gov/toolssoftware/ccs10/ccs10.jsp)  
436 [us.ahrq.gov/toolssoftware/ccs10/ccs10.jsp](https://hcup-us.ahrq.gov/toolssoftware/ccs10/ccs10.jsp).
- 437 11. Shulman, S.T., Bisno, A.L., Clegg, H.W., Gerber, M.A., Kaplan, E.L., Lee, G., Martin, J.M., and  
438 Van Beneden, C. (2012). Clinical Practice Guideline for the Diagnosis and Management of

- 439 Group A Streptococcal Pharyngitis: 2012 Update by the Infectious Diseases Society of  
440 America. *Clinical Infectious Diseases* 55, e86–e102. [10.1093/cid/cis629](https://doi.org/10.1093/cid/cis629).
- 441 12. Census Regions and Divisions of the United States.
- 442 13. Kyle Walker and Matt Herman (2023). tidycensus: Load US Census Boundary and  
443 Attributable Data as 'tidyverse' and 'sf'-Ready Data Frames. R package version 1.4.1,  
444 <https://walker-data.com/tidycensus/>.
- 445 14. Krieger, N. (2023). USpopcenters: United States Centers of Population (Centroids). Version  
446 0.2.0.
- 447 15. Bureau, U.C. Centers of Population. [Census.gov](https://www.census.gov/geographies/reference-files/time-series/geo/centers-population.html).  
448 [https://www.census.gov/geographies/reference-files/time-series/geo/centers-](https://www.census.gov/geographies/reference-files/time-series/geo/centers-population.html)  
449 [population.html](https://www.census.gov/geographies/reference-files/time-series/geo/centers-population.html).
- 450 16. Drew DeSilver (2019). “Back to school” means anytime from late July to after Labor Day,  
451 depending on where in the U.S. you live. Pew Research Center.  
452 [https://web.archive.org/web/20230804071907/https://www.pewresearch.org/short-](https://web.archive.org/web/20230804071907/https://www.pewresearch.org/short-reads/2019/08/14/back-to-school-dates-u-s/)  
453 [reads/2019/08/14/back-to-school-dates-u-s/](https://web.archive.org/web/20230804071907/https://www.pewresearch.org/short-reads/2019/08/14/back-to-school-dates-u-s/).
- 454 17. Danchin, M.H., Rogers, S., Kelpie, L., Selvaraj, G., Curtis, N., Carlin, J.B., Nolan, T.M., and  
455 Carapetis, J.R. (2007). Burden of acute sore throat and group A streptococcal pharyngitis in  
456 school-aged children and their families in Australia. *Pediatrics* 120, 950–957.  
457 [10.1542/peds.2006-3368](https://doi.org/10.1542/peds.2006-3368).
- 458 18. Quinn, S.C., and Kumar, S. (2014). Health Inequalities and Infectious Disease Epidemics: A  
459 Challenge for Global Health Security. *Biosecur Bioterror* 12, 263–273.  
460 [10.1089/bsp.2014.0032](https://doi.org/10.1089/bsp.2014.0032).
- 461 19. Chow, E.J., Uyeki, T.M., and Chu, H.Y. (2023). The effects of the COVID-19 pandemic on  
462 community respiratory virus activity. *Nat Rev Microbiol* 21, 195–210. [10.1038/s41579-022-](https://doi.org/10.1038/s41579-022-00807-9)  
463 [00807-9](https://doi.org/10.1038/s41579-022-00807-9).
- 464 20. Streptococcus Disease, Invasive, Group A (GAS) (Streptococcus pyogenes) 1995 Case  
465 Definition | CDC (2022). [https://ndc.services.cdc.gov/case-definitions/streptococcus-](https://ndc.services.cdc.gov/case-definitions/streptococcus-disease-invasive-group-a-1995/)  
466 [disease-invasive-group-a-1995/](https://ndc.services.cdc.gov/case-definitions/streptococcus-disease-invasive-group-a-1995/).
- 467 21. Nelson, G.E., Pondo, T., Toews, K.-A., Farley, M.M., Lindegren, M.L., Lynfield, R., Aragon, D.,  
468 Zansky, S.M., Watt, J.P., Cieslak, P.R., et al. (2016). Epidemiology of Invasive Group A  
469 Streptococcal Infections in the United States, 2005–2012. *Clin Infect Dis* 63, 478–486.  
470 [10.1093/cid/ciw248](https://doi.org/10.1093/cid/ciw248).
- 471 22. Increase in Invasive Group A Strep Infections, 2022-2023 | CDC (2023).  
472 <https://www.cdc.gov/groupastrep/igas-infections-investigation.html>.

473 23. RN, K.B., Piff, A., MD, C.A., and Joyce, B. Strep Throat Infections Up 30% From 2017 Peak  
474 After Pandemic Drop. Epic Research. <https://epicresearch.org/articles/strep-throat->  
475 [infections-up-30-from-2017-peak-after-pandemic-drop](https://epicresearch.org/articles/strep-throat-infections-up-30-from-2017-peak-after-pandemic-drop).

476  
477  
478  
479  
480  
481  
482  
483  
484  
485  
486  
487  
488  
489  
490  
491  
492  
493  
494  
495  
496  
497  
498  
499  
500  
501  
502  
503  
504  
505  
506  
507  
508  
509  
510  
511  
512  
513  
514  
515