

## **Brick kiln pollution and its impact on health: A systematic review and meta-analysis**

Laura Nicolaou PhD (1,2,3), Fiona Sylvies (2), Isabel Veloso BS (2), Katherine Lord MPH (2), Ram K Chandyo MD PhD (4), Arun K Sharma MD (5), Laxman P Shrestha MD (5), David L Parker MD, MPH (6), Steven M Thygerson PhD, CIH (7), Darryn Waugh PhD (8), Peter F DeCarlo PhD (9), Gurusurthy Ramachandran PhD (3), William Checkley MD, PhD (1,2,10)

### **Affiliations:**

1. Division of Pulmonary and Critical Care, School of Medicine, Johns Hopkins University, Baltimore, Maryland, USA
2. Center for Global Non-Communicable Disease Research and Training, School of Medicine, Johns Hopkins University, Baltimore, Maryland, USA
3. Department of Environmental Health and Engineering, Bloomberg School of Public Health, Johns Hopkins University, Baltimore, USA
4. Kathmandu Medical College, Sinamangal, Kathmandu, Nepal
5. Institute of Medicine, Tribhuvan University Teaching Hospital, Kathmandu, Nepal
6. University of Minnesota School of Public Health, Minneapolis, USA
7. Department of Public Health, Brigham Young University, Provo, USA
8. Department of Earth and Planetary Sciences, Johns Hopkins University, Baltimore, USA.
9. Department of Environmental Health and Engineering, Whiting School of Engineering, Johns Hopkins University, Baltimore, Maryland, USA
10. Department of International Health, Bloomberg School of Public Health, Johns Hopkins University, Baltimore, USA

### **Address correspondence to:**

William Checkley, MD, PhD  
Johns Hopkins University  
Division of Pulmonary and Critical Care  
School of Medicine  
1830 E. Monument St. Room 555  
Baltimore, MD 21287  
Tel: 443-287-4587  
E-mail: [wcheckl1@jhmi.edu](mailto:wcheckl1@jhmi.edu)

**Conflicts of Interest:** The authors declare they have nothing to disclose.

## ABSTRACT

**Background:** Brick kiln emissions contribute to ambient air pollution and poor health in workers and individuals living near the brick kilns; however, data on the effects of brick kiln pollution on the environment and health are limited.

**Methods:** We conducted a systematic review and meta-analysis to summarize existing evidence on the adverse effects of brick kiln emissions. Sources were extracted from electronic databases and manually through citation searching. We included studies if they contributed data on brick kiln pollutant concentrations, emission factors or source contributions to ambient air pollution, health outcomes among brick kiln workers (BKWs) or community members living near brick kilns, or a comparison between BKWs and unexposed participants. We estimated pooled, sample-size-weighted means and standard deviations for personal exposures by job type and computed mean emission factors and pollutant concentrations by brick kiln design. We calculated mean differences in lung function between BKWs and controls and risk differences of respiratory symptoms between BKWs and controls or for participants living near and far away from brick kilns using a fixed effects meta-analysis.

**Results:** Our search yielded 1015 articles; 208 (20%) were assessed for eligibility and 101 (10%) were included in our review. We identified three studies through manual searching. Of 104 studies, 74 (71%) were conducted in South Asia. The most evaluated pollutants (whether kiln emissions, source contributions, or personal exposures) were particulate matter (PM; n=48), sulfur dioxide (SO<sub>2</sub>; n=24) and carbon monoxide (CO; n=22), and the most evaluated health outcomes were respiratory health (n=34) and musculoskeletal disorders (n=9). On average emissions of PM and CO were higher among traditional than improved brick kilns. Mean respirable silica exposures were only measured in 4 (4%) studies and were as high as 620 µg/m<sup>3</sup>, exceeding the NIOSH recommended exposure limit by a factor of over 12. BKWs had worse lung function, more respiratory symptoms, more musculoskeletal complaints, and more inflammation when compared to unexposed participants.

**Conclusion:** On average, BKWs had worse health outcomes when compared to unexposed controls but study quality supporting the evidence was low. Few studies reported silica concentrations or personal exposures, but the few that did suggest that exposures are high. Further research is needed to better understand the relationship between brick kiln pollution and health among workers, and to evaluate exposure mitigation strategies.

## INTRODUCTION

Approximately 1,500 billion bricks are produced every year, and ~90% are produced in Asia.<sup>1,2</sup> South Asia is the second largest brick-producing region after China, with an estimated annual production of 310 billion bricks.<sup>1</sup> India, Pakistan, Bangladesh and Nepal are the biggest producers in this region, accounting for nearly 25% of global brick production.<sup>1</sup> The brick kiln industry in LMICs is highly labor-intensive, and the majority of kilns are energy inefficient and highly polluting.<sup>1-3</sup> Mechanised and efficient technologies are limited in number, making up <1% of the 150,000 kilns in South Asia.<sup>1-4</sup> Compounding this problem, many brick kilns operate in the informal sector with little or no regulation by local governments on labor or kiln emissions.<sup>1,2</sup>

Brick manufacturing involves a number of processes, typically starting with digging or mining of topsoil, mixing and molding of wet clay, and sun-drying of the green bricks.<sup>5</sup> Once dried, green bricks are carried, usually on the head or back, stacked inside the kiln, and fired. Fired, or red, bricks are then manually carried out of the kiln. Bricks are primarily fired using coal or biomass, but other fuels such as rubber tires, motor oils, trash and plastic are also common.<sup>6-9</sup>

Throughout the brick making processes, workers are exposed to various airborne pollutants. Clay and brick dust contains high concentrations of silica, while the smoke emitted during brick firing contains particulate matter (PM) and gaseous pollutants including sulfur dioxide (SO<sub>2</sub>), carbon monoxide (CO), and nitrogen oxides (NO<sub>x</sub>). An estimated 16 million workers in South Asia alone are exposed to these hazardous pollutants.<sup>1</sup> Brick kilns are also a major contributor to ambient air pollution and are responsible for up to 91% of total PM emissions in some cities.<sup>1</sup>

Reports from the 2016 Global Burden of Disease highlight the burden of chronic respiratory diseases caused by occupational exposures, namely chronic obstructive pulmonary disease (COPD), asthma, and pneumoconioses such as silicosis and asbestosis.<sup>10</sup> Among high-risk occupations, those that involve increased exposure to both smoke and dust place workers at the highest risk for developing chronic respiratory symptoms and illnesses, as is the case with BKWs.<sup>11</sup>

Despite the contribution of the brick kiln industry to ambient air pollution and community-wide respiratory illness, data on kiln pollution remains limited.<sup>4</sup> Most reports on the consequences of brick kiln pollution have been based in urban areas in South Asia. This review expands the evaluation of brick kiln emissions and their health impacts globally, with particular focus on LMICs. We synthesize existing evidence on the effects of brick kiln emissions on the environment and health, identify current gaps in the literature, and discuss implemented interventions to lower brick kiln emissions.

## METHODS

### Search strategy and data sources

The search strategy is provided in the supplementary material and described in the PROSPERO protocol (PROSPERO 2020 CRD42020221833). Sources were extracted from electronic databases including EMBASE, MEDLINE, Web of Science, SciELO, WHO Global Index Medicus, Cochrane Database of Systematic Reviews, and World Bank, as well as

reference lists from identified studies and reviews. Electronic searching was carried out in December 2020. Manual and electronic searches were conducted between December 2021 and October 2022 and an updated electronic search was conducted in July 2023. Languages were restricted to English, Nepali, Spanish, Italian, and French. No date limits were applied. Sources identified from electronic databases were combined, duplicates removed, and articles screened for relevance based on title and abstract by two reviewers (LN and FS). Disagreements between the two reviewers were adjudicated by a third reviewer (WC).

### **Data extraction**

The full text was then acquired for all sources identified as potentially relevant. Studies were included if they provided (1) quantitative data on brick kiln pollutants, including concentrations, emission factors and source contributions to ambient air pollution; or (2) health outcomes among brick kiln workers (BKWs) or community members living near brick kilns; or (3) a comparison between brick kiln exposed and unexposed participants. Studies were excluded if they were conference abstracts or proceedings; provided data on pollution that does not directly impact human health (e.g., relevant to soil health or climate change); did not provide concrete data on health outcomes, pollutants at kiln sites or contribution of brick kiln emissions to the surrounding air pollution (e.g., ambient pollutant concentrations measured in the vicinity of kilns; source apportionment where brick kiln emissions are lumped together with other sources); reported modeled, rather than measured, exposures or outcomes (e.g., estimates of brick kiln emissions using existing emissions inventories and atmospheric dispersion modelling or cancer risk assessment using the incremental lifetime cancer risk approach); or were case reports, reviews and studies with duplicate data. In case of disagreement between reviewers, articles were adjudicated by the third reviewer. Articles were then sorted by categories (Pollution, Health, Pollution & Health) and summary tables were created including the following details for pollutant-related studies: region, sampling dates, measurement type, sampling location, sample size, number and duration of measurements, and pollutant(s) reported. Summary tables for health outcomes studies included region, dates, study design, characteristics of the study population (age, gender, sample size, inclusion criteria), and outcome(s) reported.

### **Methodological quality assessment**

For studies reporting health outcomes, we assessed methodological quality using the Newcastle-Ottawa scale, which provides a standardized approach to grade the quality of nonrandomized studies. The Newcastle-Ottawa scale consists of eight criteria across three domains including selection of the study groups, comparability of the study groups, and ascertainment of the exposure or outcome for case-control and cohort studies, respectively.<sup>12</sup> Since a validated risk of bias tool for exposure studies does not exist, we developed a 6-item scale to assess the quality of papers reporting pollution data. Two of three reviewers (LN, KL, WC) scored the studies independently and disagreements were resolved by the third.

### **Statistical methods**

We estimated pooled, sample-size-weighted means and standard deviations for personal exposures by job type. We could not do the same for emission factors and concentrations

because the sampling intervals were too variable and as a result variances were not on the same time scales. Instead, we computed means by brick kiln design. We categorized Bull's trench (BTK), clamp (CK), downdraft (DDK), traditional-campaign (TCK), traditional-fixed (TFK) and traditional-improved (TIK) kilns as traditional, while forced-draft zigzag (FDZ), Hoffmann (HK), Marquez (MK) and double-domed Marquez (MK2), natural draft zigzag (NDZ), tunnel (TK) and vertical shaft (VSBK) kilns were classified as improved designs. Emission factors and concentrations below the limit of detection (LOD) were assigned a value equal to the  $\frac{LOD}{\sqrt{2}}$ .

Analyses were performed on natural-log transformed data and values were then back-transformed to obtain geometric means and confidence intervals.<sup>13</sup> We converted results reported in ppm to mg/m<sup>3</sup> using  $mg/m^3 = ppm \frac{MW}{V_m}$ , where *MW* is the molecular weight (g/mol) and *V<sub>m</sub>* is the molar gas volume (L/mol). Assuming a pressure of 1 atmosphere and a temperature of 25 °C, *V<sub>m</sub>* = 24.465 L/mol for ideal gases. For VOCs, which were measured using an Aeroqual 500, we applied the device's conversion factor of 2.5 to determine concentrations in mg/m<sup>3</sup>.<sup>14</sup> For studies that did not report the modified combustion efficiency (MCE), we estimated it as  $MCE = \Delta CO_2 / (\Delta CO_2 + \Delta CO)$ , where  $\Delta CO_2$  and  $\Delta CO$  are the total amounts of CO<sub>2</sub> and CO emitted, respectively. Non-physical and inconsistent data (e.g. CO<sub>2</sub> emission factors >3667 g/kg fuel<sup>15</sup>; higher MCE in fugitive than flue gas emissions<sup>16</sup>) were flagged and excluded from the meta-analysis. Emission factors and pollutant concentrations used in our analyses are shown in Tables S4 and S5.

We computed study-specific proportions of respiratory symptoms and diseases or the mean (and standard deviation) of lung function values for each study among BKWs and control groups or for participants living near and far away from the brick kilns. For lung function data, we provided study-specific means and absolute mean differences in lung function. We calculated an overall mean difference for lung function values between BKWs and controls. We used a fixed effects meta-analysis to summarize mean differences across studies. We also summarized lung function data stratified by both BKW exposure and tobacco smoking status and provided mean percent predicted values for both BKWs and controls. We calculated the average proportion of respiratory symptoms and disease for BKWs using the reciprocal of variances as weights. We also calculated risk differences (i.e., the absolute difference in proportions) of respiratory symptoms between BKWs and controls or for participants living near and far away from the brick kilns using a fixed effects meta-analysis.

Analyses were conducted in R version 4.2.1 alias Funny-Looking Kid.

## RESULTS

### Literature search

We identified 1089 references through electronic searching and 6 manually. After removing duplicates, screening of titles and abstracts, and evaluation of full-text articles, we identified 104 studies for review (Figure 1). Fifty-eight (56%) reported data on brick kiln pollution,<sup>6,8,15-67</sup> 25 (24%) on health,<sup>5,68-92</sup> and 21 (20%) on both pollution and health.<sup>7,9,93-110</sup> We mapped countries

where brick kiln research was conducted in Figure 2. Most were in South Asia (Online Supplement).

### **Brick kiln pollution**

Seventy-nine studies reported data on brick kiln pollutants or toxic exposures (Table S1). Overall study quality was low (Table S2). We report on study characteristics in Table S1 and summarize type of pollutant data, pollutants measured and measurement locations in Table S3. The most commonly measured pollutants were PM, SO<sub>2</sub> and CO, and most studies performed measurements at kiln sites (n=65, 82%), including flue gas and in-stack sampling, samples collected at various locations within the kiln site, and measurements of personal exposures and exposure biomarkers in BKWs and children living at the site (Table S3).

### ***Pollutant emission factors from brick kilns***

PM and NO<sub>x</sub> were the most reported emission factors (Online Supplement). Emission factors for PM, BC, EC, and OC were higher for traditional when compared to improved brick kilns (Figure 3). Emissions of OC were considerably larger than EC across all studies (Table S4).

Among gaseous pollutants, CO<sub>2</sub> was the largest emission and was similar in both traditional and improved kilns (Figure 3). Emission factors of NO, NO<sub>2</sub> and NO<sub>x</sub> were low across both traditional and improved kilns. Emission factors of SO<sub>2</sub> displayed a large variability across studies. In general, brick kilns using biomass had lower SO<sub>2</sub> emission factors than those using coal. As expected, due to the lower combustion efficiency of traditional kilns, CO emission factors were higher among traditional vs improved kilns (mean MCEs were  $0.96 \pm 0.02$  and  $0.98 \pm 0.01$  for traditional and improved kilns, respectively). This trend held true when further stratifying by fuel type (Tables S6 – S9). CO emission factors decreased with increasing MCE (Figure S1).

We identified five studies that reported various VOC emission factors,<sup>30,35,36,55,64</sup> and found that VOCs were lower in brick kilns than in food or pharmaceutical factories. Some studies reported higher VOC emissions in improved kilns when compared to traditional kilns; however, VOC emissions depend not only on kiln design but also on fuel type.<sup>35</sup> We summarize findings on VOC emissions from all five studies in the Online Supplement.

Three studies reported PAH emission factors.<sup>16,33,40</sup> Emission factors of PAHs and other incomplete combustion products were lower in stack gas than fugitive emissions due to the longer reaction time along the chimney.<sup>16</sup> The most abundant PAHs from a clamp kiln were chrysene, benz(a)anthracene, benzo(e)pyrene, and 1-methylcrysene.<sup>40</sup> Very low levels of PAHs were observed from a zigzag kiln, reflecting relatively complete combustion of the coal.<sup>33,40</sup> We summarize findings from each study in the Online Supplement.

### ***Pollutant concentrations at brick kiln sites***

We report on the types of pollutant concentrations measured at the brick kiln sites in Table S9. Traditional kilns emitted higher concentrations of PM, BC, EC, OC and CO, similar concentrations of VOCs and SO<sub>2</sub>, and lower concentrations of NO<sub>x</sub> when compared to improved brick kilns (Figure 4). High concentrations of VOCs, CO<sub>2</sub>, CO and SO<sub>2</sub> were measured in-stack among both traditional and improved kilns (Figure 4a). Mean out-of-stack concentrations of CO,

SO<sub>2</sub> and NO<sub>2</sub> in traditional kilns were above the WHO recommended limits for 24-hour mean exposures but below the National Institute for Occupational Safety and Health (NIOSH) time-weighted average recommended exposure limit for up to a 10-hour workday (Figure 4b). Mean PM<sub>10</sub> and PM<sub>2.5</sub> concentrations from traditional kilns were both higher than the WHO limits, whereas mean PM<sub>2.5</sub> from improved kilns was below the recommended limit.

We identified six studies reporting various PAH concentrations.<sup>29,38,39,53,61,103</sup> We summarized findings of the individual studies in the Online Supplement. Briefly, we identified that the type and concentration of PAH depends on type of fuel used and type of sample (soot or soil). The most common PAHs identified were acenaphthylene, phenanthrene, chrysene, and fluorene.

Six studies reported metal concentrations.<sup>29,46,48,51,60,95</sup> We summarized findings of the individual studies in the Online Supplement. Briefly, heavy metals such as mercury, lead, barium, zinc, chromium and cadmium were commonly identified at the kiln sites. Most studies reported that heavy metal concentrations per gram of sample tested exceeded background levels or national or international regulatory levels.

Surprisingly, only one study reported silica concentrations.<sup>8</sup> Beard et al.<sup>8</sup> measured pollutant concentrations, including respirable silica, inside and outside 16 BKW homes across four brick kilns in Bhaktaphur, Nepal. The geometric mean silica (quartz) concentration across all 32 samples collected was 6.22 µg/m<sup>3</sup>, while concentrations of silica in the form of cristobalite and tridymite were all below the limit of detection. These results suggest that silica concentrations are typically low at on-site worker housing and that silica exposures among BKWs are likely to occur predominantly during work hours.

### ***Contribution of brick kiln emissions to surrounding ambient air pollution***

Fourteen studies reported the contribution of brick kiln emissions to the surrounding ambient air pollution in South Asia (Table S3). We report on data from individual studies in the Online Supplement. Brick kilns appear to contribute to ambient PM<sub>2.5</sub>, PM<sub>10</sub> and BC anywhere in the range of 20%-41%, up to 28% and 6%-91%, respectively, depending on the location and model used.<sup>23-28,34,111,112</sup> Brick kilns are also primary contributors to EC (40%)<sup>43</sup> and NMVOCs (10%)<sup>54</sup> in some settings. Source apportionment studies in and adjacent to the Kathmandu valley, Nepal, showed that coal combustion in brick kilns accounted for 9-17% of the organic material in ambient PM<sub>1</sub>.<sup>111,112</sup>

In India and Nepal, ambient BC, PM<sub>2.5</sub>, PM<sub>10</sub> and TSP were reported to be 70-180% higher in the winter season when the kilns are operational compared to the monsoon season when kilns are not operational.<sup>21,102</sup> Sites near kilns are also associated with higher levels of ambient pollution. In Pakistan, for example, ambient PM<sub>10</sub>, SO<sub>2</sub> and NO<sub>2</sub> was 500%, 28% and 270% higher, respectively, in an area where brick kilns were operational compared to an area where kilns were not operational.<sup>94</sup> Similarly, another study in Pakistan found that PM<sub>2.5</sub> and PM<sub>10</sub> concentrations were 4.6 times higher within 3 km of kilns compared to >3 km from the kilns.<sup>7</sup>

### ***Personal exposures of brick kiln workers***

There were 6 (8%) studies that reported personal exposures to pollutants among BKWs (Table S3). Data collected for BKWs across five different job types, or similar exposure groups (SEGs), in 16 brick kilns in Kathmandu Valley, Nepal, revealed that average exposures to total suspended particles (TSP), respirable suspended particles (RSP) and silica were highest among red brick loaders (Figure 5).<sup>14,94</sup> Green brick molders had the lowest exposures to RSP and silica, while TSP exposures were lowest among firemen. On average, exposures to respirable silica exceeded the NIOSH recommended exposure limit of 50  $\mu\text{g}/\text{m}^3$  in all job types, with mean exposures 1.4 to 6.6 times higher than the limit.

Similar levels of silica exposure were observed in a study among 12 workers across 2 brick kilns in the Mazandaran province in Iran (Figure 5).<sup>52</sup> In brick and tile works in England and Scotland, mean quartz concentrations across 23 different work groups ranged between 40  $\mu\text{g}/\text{m}^3$  for those with no direct exposure (office, canteen), to 620  $\mu\text{g}/\text{m}^3$  for kiln demolition workers (SDs missing so not included in meta-analysis).<sup>105</sup> Exposures to RSP were similar to those reported by Sanjel et al.<sup>93</sup>, with mean values ranging between 0.4  $\text{mg}/\text{m}^3$  and 10  $\text{mg}/\text{m}^3$ . Personal samples collected in a brick factory in Southern Cairo, Egypt, showed exposures were higher in the mining area than in the production area for both RSP and silica.<sup>110</sup>

Another study conducted in Durango, Mexico measured personal exposures to  $\text{PM}_{2.5}$  and CO among workers in one fixed traditional kiln (n=2) and one MK2 Marquez kiln (n=2).<sup>47</sup> The assessments were conducted on the worker responsible for feeding the kilns and the assistant to the main operator. Despite the more energy-efficient design of the MK2 and lower emission concentrations, average personal exposures to  $\text{PM}_{2.5}$  and CO were higher in the MK2 vs the FTK (Figure 5). This was attributed to the presence of a flat shade roof and observational portholes, as well as mismanagement of the operational processes in the MK2, resulting in an accumulation of pollutants.

### ***Exposure biomarkers***

We identified 13 (17%) studies that measured exposure biomarkers among BKWs, children at kiln sites, and children living in communities near kilns (Table S3). BKWs and children near kilns had higher urinary concentrations of PAH exposure biomarkers (1-hydroxypyrene,  $\alpha$ -naphthol,  $\beta$ -naphthol),<sup>32,45,49,104</sup> and benzene exposure biomarkers (trans,trans-muconic acid)<sup>32</sup> compared to controls or even individuals living near heavy traffic, waste landfill or metallurgical industry (Table S11). Heavy metal concentrations in blood among BKWs and nonworkers living near kilns were also higher compared to controls,<sup>9,56,96,100,101</sup> but not compared to those in other urban marginalized communities.<sup>32</sup>

### ***Health outcomes***

Forty-six studies evaluated health outcomes (Table S12). The most evaluated conditions were respiratory health, biomarkers and musculoskeletal disorders. Overall study quality across health outcomes was low (Table S13).



### **Respiratory health**

We summarized characteristics of studies reporting respiratory health data in the Online Supplement and Tables S14 and S15. Forced expiratory volumes (FEVs) were lower in BKWs than in controls (Figure 6). Tobacco smoking may be an important effect modifier: BKWs who were smokers had lower FEVs when compared to non-smoking BKWs, non-BKWs smokers, or non-smoking non-BKWs (Table 1); however, this interaction was not formally evaluated by any of the studies and missing information on sample size in subgroups for most studies did not allow us to conduct a meta-analysis. Reported mean percent predicted values of FEV were lower in BKWs than in controls (Table 2) but there were too few studies to conduct a meta-analysis.

The prevalence of respiratory symptoms was higher in BKWs than in controls and was higher in participants living near kilns than in those living farther away from the kilns (Table 3). Both chronic diseases, like asthma, COPD and chronic bronchitis, and respiratory infections were also more common in BKWs when compared to controls (Table 3). One study found higher odds of tonsillitis and throat inflammation in children living near brick kilns compared to those living farther away from bricks kilns.<sup>102</sup> Another study found a higher incidence of pneumonia and upper respiratory infections when brick kilns was the source category of fine particulate matter.<sup>86</sup> A study in India reported that 9.4% of adult and child BKWs had chest symptoms consisting of productive cough for two weeks or longer with or without chest pain, intermittent fever or hemoptysis.

Ten studies evaluated the association between respiratory outcomes and number of years worked (Table S14): one study reported a positive correlation between the score obtained from a screening questionnaire for COPD and number of years worked (numerical value for correlation not given);<sup>99</sup> one study found a higher prevalence of small opacities on chest X-ray ( $\geq 0/1$ ) and either number of years worked or estimated cumulative exposure to respirable quartz;<sup>105</sup> four studies did not find any relationship between respiratory symptoms or lung function and number of years worked;<sup>69,78,88,106</sup> four studies found either a higher prevalence of respiratory symptoms or lower lung function with more years of work exposure.<sup>5,79,87,113</sup> Ten studies evaluated the association between respiratory outcomes and BKW occupation: three found more respiratory symptoms (including conditions like chronic bronchitis and asthma) in bakers when compared to other BKW types;<sup>5,76,87</sup> four did not find an association between lung function or respiratory symptoms and BKW type,<sup>88,93,106,107</sup> one found that among workers in the modulation, loading, burning and unloading sites, obstructive and restrictive impairments were highest in workers at the loading and burning sites, respectively,<sup>107</sup> one found that respiratory symptoms were lower in molders compared to carriers, stackers or firemen,<sup>69</sup> and one found more respiratory symptoms in bigaaris (translates to carriers) when compared to other brick kiln types.<sup>79</sup>

### **Gastrointestinal disease**

We identified 3 studies reporting data on gastrointestinal problems among BKWs,<sup>79,90,110</sup> but only 1 related to kiln exposures.<sup>110</sup> Zawilla et al.<sup>110</sup> examined liver function among 87 silica-exposed BKWs and 45 non-exposed controls in Egypt. Mean liver function test concentrations

(except albumin and bilirubin), MMP-9, and immunoglobulins (G and E) were all significantly higher in BKWs compared to controls; more than half of BKWs had abnormal AST and GGT and almost 20% had abnormal ALT and ALP levels, but no comparative data was reported for controls. The other studies, conducted among different BKW groups in India, reported proportions between 4% and 13.2% with gastrointestinal disorders but it was unclear if these were attributed to brick kilns or poor sanitary facilities and polluted drinking water.<sup>79,90</sup>

### ***Reproductive health risks***

Three studies reported data on reproductive health in BKWs.<sup>9,73,101</sup> One study conducted in Pakistan compared health risks in 232 female BKWs to 113 controls and found a lower age at menarche for BKWs when compared to controls ( $11.1 \pm 0.16$  years vs.  $14.1 \pm 0.19$  years, respectively).<sup>73</sup> Female BKWs had a higher average number of pregnancies, abortions and stillbirths when compared to controls; however, controls were younger and fewer were married than BKWs. Another study in Pakistan examined testosterone and luteinizing hormone (LH) levels in 110 male BKWs with at least 10 years of work experience, 30 non-BKWs aged 19-45 years living in nearby communities to the kilns, and 57 adult males aged 21-40 years (distance from kilns not reported).<sup>101</sup> The authors found that testosterone in BKWs was lower when compared to controls or non-BKWs who lived near the kilns. Testosterone levels were also lower in brick bakers compared to other BKW occupations. LH was lower in brick makers and brick carriers compared to controls or nonworkers who lived near the kilns. Brick bakers appear to have higher LH than controls and nonworkers who lived near the kilns, although the text and table report this finding inconsistently. The last study, also from Pakistan, compared 346 adult BKWs to 200 non-BKW controls of a similar age range.<sup>9</sup> The authors found higher FSH and LH and lower testosterone in BKWs compared to controls

### ***Musculoskeletal disorders***

Nine studies reported data on musculoskeletal pain;<sup>69-72,79,88,90,95,109</sup> however, none of these studies linked musculoskeletal pain directly to brick kiln pollution exposure. Four studies compared BKWs to controls and found that the prevalence of musculoskeletal problems was consistently higher in BKWs than in controls.<sup>70,72,90,109</sup>

### ***Cardiovascular disease***

We did not identify any papers reporting prevalence of cardiovascular disease among BKWs or any associations of cardiovascular outcomes with kiln pollutants. One study reported a prevalence of hypertension at 25.5% among Mexican BKWs,<sup>99</sup> and two studies reported heart rate and blood pressure before and after completion of work in the brick kiln as an assessment of physiological stress.<sup>70,72</sup> Comparing 220 male brick field workers from 12 brick fields in West Bengal, India and 130 controls engaged in office work, Das found no difference in resting heart rate between groups.<sup>70</sup> Resting blood pressure was lower among BKWs although results presented in the table and text were inconsistent. Just after work, both heart rate and blood pressure were higher in BKWs than controls. In a later study among 112 child BKWs aged 9 to 16 years and 120 controls engaged in household jobs, the author found no difference in heart rate or blood pressure at rest between the two groups, but significantly higher values among

BKWs than controls after completion of work.<sup>72</sup> A total of 46% of kiln workers reported cardiovascular problems compared to 4% of controls.

### **Cancer**

We identified 4 papers reporting cancer risk due to exposure to kiln emissions, namely PAHs, metals, and radionucleotides.<sup>19,103,114,115</sup> However, all 4 of these studies were excluded from the health outcomes review as the risk assessment was based on models rather than collected health outcome data. In addition, one of the studies modelled the risk based on PAH concentrations in an agricultural and brick production area rather than at a kiln site.<sup>114</sup>

### **Biomarkers**

Eleven studies evaluated biomarkers in BKWs against unexposed controls (Table S12). We summarized the findings for each study in the Online Supplement. Overall, there was evidence of higher reactive oxygen species, lower concentrations of superoxide dismutase and catalase, and more DNA damage in BKWs when compared to controls (Table S16). There was also evidence of more inflammation as evidenced by a higher C-reactive protein and cortisol in BKWs when compared to controls, and elevated cytokine levels in exhaled breath condensate of BKWs. Two studies identified down-regulated expression of genes associated with DNA and protein repair in BKWs when compared to controls.

### **Linear growth**

Three studies examined the role of brick kiln pollution on child linear growth (e.g., stunting).<sup>7,84,89</sup> Nasir et al.<sup>7</sup> examined 383 children aged 5-12 years from Pakistan, measured their height and calculated Z-scores using the 2007 World Health Organization (WHO) international reference. Mean height-for-age Z-score was -0.50 (prevalence of stunting not reported). The authors used propensity score matching on a probit regression using 4 different techniques to match on household and child characteristics for children living within 3 km of a brick kiln (exposed) when compared to children living farther away (controls). Using nearest neighbor and radius matching, exposed children had a Z-score that was -0.68 and -0.6 lower than controls, respectively ( $p < 0.01$ ). Z-scores were -0.43 and -0.42 lower with kernel and stratification matching, albeit not statistically significant. Roshania et al.<sup>84</sup> conducted a large cross-sectional study with a cluster design and measured height and in weight in 2564 migrant children (aged 0-11 months and 12-23 months) from 1156 brick kilns in India. Z-scores were calculated using the 2006 WHO Multi Growth Reference studies. Overall prevalence of stunting was 51.6% (mean Z-score not reported). Among children whose first episode of migration to a kiln occurred before age 6 months, the odds of stunting were 1.6 (95% CI 1.17 – 2.19) and 2.1 (1.30 – 3.41) times higher in those with two and three migration episodes, respectively, when compared to one. Sinaga et al.<sup>89</sup> evaluated 192 children from Indonesia aged 0-24 months who lived in villages with ( $n=101$ ) and without ( $n=91$ ) clay brick kilns. The overall prevalence of stunting was 19%. The authors did not find a difference in the prevalence of stunting between children who lived in villages with clay brick kilns and those who lived in villages without clay brick kilns (19.8% vs. 18.6%;  $p=0.45$ ).

### **Other health outcomes**

Other health outcomes reported in the literature included skin complaints,<sup>72,74,79,88,90,91,108,109</sup> ocular problems,<sup>72,79,88,90,91,95,108,109</sup> injuries,<sup>79,108</sup> and nasal and otologic complications.<sup>74</sup> The proportion of BKWs with skin complaints ranged between 5%<sup>109</sup> and 19%<sup>79</sup>, with the major problems being callosities, eczema, dermatitis and itchy hands and feet.<sup>79,90</sup> Results on eye problems varied widely, with ~4% of BKWs reporting eye complaints in 2 studies,<sup>79,90</sup> and 48% reporting problems in vision in another.<sup>109</sup> Interestingly, a comparative study between BKWs and grocery workers as controls, found that the proportion experiencing eye problems was significantly lower among BKWs (14.8%) than controls (22.5%).<sup>108</sup> On the other hand, the occurrence of injuries was significantly higher among BKWs (55.0%) than controls (44.2%). Among the 420 BKWs interviewed by Kazi et al.<sup>79</sup> however, only 7% reported injuries. Lastly, an otorhinolaryngologic evaluation of 103 BKWs in Erbaa, Turkey, showed that 1.9% had structural otologic complications, whereas general otologic complications, including dust in the external ear canal or tympanic membrane, were observed in 25.2% of workers.<sup>74</sup> Structural and general nasal complications were observed in 26.2% and 68.0% of BKWs, respectively, and were significantly higher among workers who did not wear a mask and those who had worked for more than 10 years when compared to those who did not wear masks or worked fewer than 10 years, respectively. The authors did not find differences in otologic or rhinologic complications by BKW occupation.

### **Interventions**

We identified 4 studies that compared different brick kiln technologies and provided recommendations for reducing emissions.<sup>6,15,35,47</sup> A study which compared emission concentrations from a fixed traditional kiln and an improved MK2 Marquez kiln in Durango, Mexico, showed that average emissions of PM<sub>2.5</sub>, OC and EC from the FTK were a factor of two higher than the MK2, despite initial mismanagement by the MK2 operator which led to higher concentrations in the MK2 during the first sampling cycle.<sup>47</sup> The authors highlighted the need for supervision by authorities, training, and good practice on implementation and operation to maximize the environmental benefits of improved technologies.

Among 18 brick kilns in Greater Dhaka, Bangladesh, consisting of FCKs, ZZKs and HKs, Haque et al. found average fuel-based emission factors of BC, PM<sub>2.5</sub> and CO were highest in FCKs, whereas CO<sub>2</sub> and SO<sub>2</sub> emissions were highest in ZZKs and HKs, respectively.<sup>35</sup> They noted, however, that SO<sub>2</sub> concentrations not only depend on kiln technology but also on the sulfur content in the fuel used. Fuel consumption per fired brick was highest for FCKs. Similar results were observed in a comparative study conducted across 4 FCKs and 3 ZZKs in Kathmandu Valley, Nepal.<sup>6</sup> Compared with ZZKs, FCKs had higher PM<sub>2.5</sub> and BC, comparable SO<sub>2</sub>, and lower CO<sub>2</sub> emissions based on fuel-based emission factors. Emissions per kilogram of fired brick were lower in ZZKs than FCKs for all pollutants, and brick production capacity was higher in ZZKs. Their results suggested that a conversion from FCKs to ZZKs could result in emission reductions in PM<sub>2.5</sub> by ~20% and BC by ~30% per kilogram of fuel used, and ~40% for PM<sub>2.5</sub> and ~55% for BC per kilogram of fired brick. Another study conducted in Punjab, Pakistan, found fuel-based emission factors were substantially higher in FCKs than ZZKs for all pollutants

measured (SO<sub>2</sub>, CO, CO<sub>2</sub>, PM), except for NO<sub>x</sub>.<sup>15</sup> In this case, emission reductions per kilogram of fuel used in ZZKs compared to BTKs were 98% for PM, 96% for SO<sub>2</sub>, 83% for CO, and 64% for CO<sub>2</sub>. While the emission factors and emission reduction estimates varied significantly across these studies, the results suggest that converting from FCKs to ZZKs or HKs, along with the use of high-grade coal with lower sulfur content, could be an effective solution for reducing emissions from brick kilns. The higher combustion efficiency of ZZKs also translates into higher private net benefits for ZZK owners, providing an incentive to shift from BTKs to ZZKs.<sup>15</sup>

An additional 2 studies offered similar recommendations to reduce emissions, namely optimizing airflow in existing kilns to improve combustion efficiency such as zig-zag firing, switching to cleaner brick-making technologies, and utilizing clay and coal with lower sulfur, carbon and metal contents.<sup>20,43</sup> Additional recommendations on air quality management measures for clamp kilns based on findings from various firing campaigns in a model kiln included ensuring an even distribution of clay and fuel across the firing batch, ensuring a steady rise and fall in temperature, and ensuring adequate sun drying of bricks prior to firing to help reduce energy consumption.<sup>20</sup>

We did not find any studies on interventions to reduce exposures among BKWs, and only 5 studies that measured personal exposures and provided some recommendations on dust control and personal protection.<sup>18,52,93,105,110</sup> These recommendations included the use of water to reduce dust when possible, a decrease in the long hours on the job leading to greater risk of overexposure, the use of respiratory protection with priority given to brick haulers and stackers, changing into clean clothes after work, and regular health surveillance. The authors also advocated for enforcement of stricter regulations on brick kilns.

## DISCUSSION

We conducted a comprehensive systematic review and meta-analysis of studies linking brick kiln pollution to environmental exposures and health. While published data presents on emissions related to brick kilns extensively, our review identified important knowledge gaps in personal exposures and evaluation of health outcomes among brick kiln workers. First, despite silica being one of the most important exposures to workers, we identified only five studies out of 104 that measured personal exposures to silica, two that provided data on silicosis and one that evaluated for profusions on chest X-rays. Second, while most studies correctly focused on respiratory conditions, they largely ignored other important organ systems well known to be affected by pollution such as the cardiovascular and nervous systems. Indeed, hypertension and cardiovascular disease are the leading risk factor and cause of illness and death, respectively, worldwide,<sup>116,117</sup> and long-term exposure to silica is linked to higher risk of cardiovascular disease mortality.<sup>118</sup> Third, even among the studies that evaluated respiratory health, standardized questionnaires were not used consistently to report on respiratory symptoms, and guidelines and reference equations for spirometry were not reported in most studies. Most studies did not provide clear definitions of how respiratory symptoms were asked. Dyspnea, while generally higher in BKWs than in controls, was not consistently reported across

studies. No studies reported Z-scores for lung function and only two studies out of 14 described the reference equations used to calculate percent predicted values. Lung function depends on age, sex, and height. Moreover, other risk factors including tobacco smoking, exposure to biomass smoke, and exposures to sources of air pollution other than brick kiln pollution also affect lung function. Without adjustment for these parameters, it is difficult to interpret whether differences in lung function between study groups are meaningful. Fourth, most studies were predominantly conducted in South Asia. While recognized as an important problem in South Asia, brick kilns are ubiquitous in low- and middle-income countries worldwide. Our review also identified potential research opportunities to improve our evidence base.

To our surprise, we found that only five studies (5%) measured silica concentrations or personal exposures,<sup>8,18,52,105,110</sup> and only four reported personal exposures to other pollutants like PM<sub>2.5</sub>, RSP and CO.<sup>47,93,105,110</sup> While the three studies reporting on silica exposures in low- and middle-income countries were limited in sample size and scope with no more than 48 participants,<sup>18,52,110</sup> they nonetheless highlight the problem of silica exposure among brick kiln workers in countries where regulations may be less closely monitored. Silica exposures were severalfold higher than the American Conference of Governmental Industrial Hygienists threshold limit value (ACGIH TLV; 25 µg/m<sup>3</sup>) and the NIOSH recommended exposure limit (NIOSH REL; 50 µg/m<sup>3</sup>)<sup>119</sup> and were similar or higher than other occupations where silica dust exposure is also prevalent like mining and pottery.<sup>120,121</sup> Exposure to silica dust is associated with lung cancer, silicosis, kidney disease, chronic obstructive pulmonary disease and cardiovascular disease.<sup>122</sup> Our review identified that better epidemiological data linking silica exposures in brick kilns with health outcomes is needed. Indeed, better studies estimating cumulative exposure to health outcomes will clearly help to drive policy for exposure mitigation in this neglected group of workers.

The most common study design was cross-sectional. Indeed, we did not identify a single study that collected longitudinal data to evaluate associations between long-term exposures and health outcomes or conducted a randomized controlled trial (RCT) to evaluate exposure mitigation strategies on health outcomes. Cross-sectional studies, while less expensive and faster to conduct than longitudinal studies, do not allow for causal or temporal relationships and may be prone to biases such as recall bias and the healthy worker effect.<sup>123</sup> Common conditions including hypertension, chronic obstructive pulmonary disease, and chronic kidney disease would benefit from longitudinal studies to understand the relationship between cumulative exposures to silica and other brick kiln pollutants on health outcomes. Given that occupational exposure to brick kiln pollution is a preventable condition, individual-level interventions like the use of personal protective equipment or clustered interventions such as the use of water spray at kilns as strategies to mitigate personal exposures to silica and other pollutants may have measurable impacts on health outcomes. Moreover, RCTs can be used to study multiple primary outcomes including the impact of mitigation of brick kiln pollution exposures on musculoskeletal health where evidence is lacking. However, one difficulty with longitudinal studies or RCTs is that brick kiln workers tend to be migrants and temporary workers, which may complicate long-term follow-up due to high rate of loss to follow-up.

Other important observations identified in our review include the association between a higher number of seasons worked and health outcomes particularly for respiratory health; however, findings were not consistent across studies and were almost equally divided between higher prevalence and no effect. We also identified interaction effects between exposure to brick kiln pollution and tobacco smoking with worse lung function when compared to neither exposure or one exposure. The interaction between brick kiln pollution and tobacco smoking is important because of the well-recognized higher risk of mortality in individuals who are occupationally exposed to silica and who are also smokers.<sup>124</sup> Our review also revealed a large variability in dust and silica exposures across job types within kilns.<sup>18,93</sup> However, few studies examined the association between job type and health outcomes, and none showed a clear link between worse respiratory health and job type. More comprehensive, standardized research is needed to better understand the effect of job type on exposures and health outcomes and help inform exposure mitigation strategies.

Our review has several strengths. First, we performed a systematic search of all brick kiln studies ever conducted to provide one of the more comprehensive analyses of brick kiln pollution exposures and health. Second, our approach to our systematic review was registered a priori and we followed an explicit methodology to search for studies in existing databases. Third, our review has allowed us to identify potential opportunities for research and interventions to improve health in brick kiln workers. There are some potential shortcomings, however. Many studies were of low quality, some did not use comparison groups or reference equations that would allow for data comparisons, and standard questionnaires about respiratory symptoms were not used. Moreover, many studies had small sample size or did not specify whether sampling was done at random or by convenience, which may affect inferences. Multiple studies reporting pollution data did not specify the number of measurements collected or the sampling duration.

In conclusion, our review identified worse health outcomes, particularly respiratory health, in brick kiln workers when compared to controls but study quality supporting the evidence was low and methods were not reported consistently or accurately. Few studies have quantified personal exposure to silica, but the few that have suggest that exposures are high and may be similar or higher than in other occupations where silica dust is also a prevalent exposure. We identified knowledge gaps that can serve as research opportunities to better understand the relationship between brick kiln pollution and health among workers, and to evaluate the effectiveness of exposure mitigation strategies.

## REFERENCES

1. Eil A, Li J, Baral P, Saikawa E. Dirty stacks, high stakes: An overview of brick sector in South Asia.
2. Mitra D, Valette D. Environment, Human Labour & Animal Welfare Unveiling the full picture of South Asia's brick kiln industry and building the blocks for change. 2017.
3. Maithel S, Heierli U. Brick by brick: The Herculean task of cleaning up the Asian brick industry. 2008.
4. Schmidt CW. Modernizing artisanal brick kilns: A global need. *Environ Health Perspect*. 2013 Aug;121(8):a242–9.
5. Shaikh S, Nafees AA, Khetpal V, Jamali AA, Arain AM, Yousuf A. Respiratory symptoms and illnesses among brick kiln workers: a cross sectional study from rural districts of Pakistan. *BMC Public Health*. 2012;12:999.
6. Nepal S, Mahapatra PS, Adhikari S, Shrestha S, Sharma P, Shrestha KL, et al. A comparative study of stack emissions from straight-line and zigzag brick kilns in Nepal. *Atmosphere*. 2019;10(3):107.
7. Nasir M, Rehman FU, Kishwar S, Bashir S, Adil M. Air pollution and child health: the impact of brick kiln pollution on children's cognitive abilities and physical health in Pakistan. *Environ Dev Sustain*. 2021;23(9):13590–606.
8. Beard JD, Thygerson SM, Olivares A, Tadge JE, Willis S, Johnston JD. Gaseous Air Pollutants and Respirable Crystalline Silica Inside and Outside Homes at Brick Kilns in Bhaktapur, Kathmandu Valley, Nepal. *Int J Env Res Public Health*. 2022;19(19).
9. David M, Jahan S, Hussain J, Rehman H, Cloete KJ, Afsar T, et al. Biochemical and reproductive biomarker analysis to study the consequences of heavy metal burden on health profile of male brick kiln workers. *Sci Rep*. 2022;12(1):7172.
10. GBD 2016 Occupational Chronic Respiratory Risk Factors Collaborators. Global and regional burden of chronic respiratory disease in 2016 arising from non-infectious airborne occupational exposures: a systematic analysis for the Global Burden of Disease Study 2016. *Occup Environ Med*. 2020 Mar 1;77(3):142–50.
11. Boschetto P, Quintavalle S, Miotto D, Lo Cascio N, Zeni E, Mapp CE. Chronic obstructive pulmonary disease (COPD) and occupational exposures. *J Occup Med Toxicol Lond Engl*. 2006 Jun 7;1:11.
12. Wells GA, Shea B, O'Connell D, Peterson J, Welch V, Losos M, et al. The Newcastle-Ottawa Scale (NOS) for assessing the quality of nonrandomised studies in meta-analyses. 2000;
13. Higgins JPT, White IR, Anzueto-Cabrera J. Meta-analysis of skewed data: combining results reported on log-transformed or raw scales. *Stat Med*. 2008 Dec 20;27(29):6072–92.



14. PPM to mg/m<sup>3</sup> conversion [Internet]. Available from: [https://support.aeroqual.com/Wiki/Conversion\\_factor](https://support.aeroqual.com/Wiki/Conversion_factor)
15. Nasim S, Sharif F. To adopt, or not to adopt, “why” is the question: A case for clean kiln technologies in developing countries. *J Clean Prod.* 2020;257:120553.
16. Chen Y, Du W, Zhuo S, Liu W, Liu Y, Shen G, et al. Stack and fugitive emissions of major air pollutants from typical brick kilns in China. *Env Pollut.* 2017;224:421–9.
17. Rajarathnam U, Athalye V, Ragavan S, Maithel S, Lalchandani D, Kumar S, et al. Assessment of air pollutant emissions from brick kilns. *Atmos Environ.* 2014;98:549–53.
18. Sanjel S, Khanal SN, Thygerson SM, Carter W, Johnston JD, Joshi SK. Exposure to respirable silica among clay brick workers in Kathmandu valley, Nepal. *Arch Env Occup Health.* 2018;73(6):347–50.
19. Abedin MJ, Karim MR, Khandaker MU, Kamal M, Hossain S, Miah MHA, et al. Dispersion of radionuclides from coal-fired brick kilns and concomitant impact on human health and the environment. *Radiat Phys Chem.* 2020;177:109165.
20. Akinshipe O, Kornelius G. Quantification of atmospheric emissions and energy metrics from simulated clamp kiln technology in the clay brick industry. *Env Pollut.* 2018;236:580–90.
21. Arif M, Kumar R, Eric Z, Gourav P. Ambient black carbon, PM(2.5) and PM(10) at Patna: Influence of anthropogenic emissions and brick kilns. *Sci Total Env.* 2018;624:1387–400.
22. Bashir Z, Amjad M, Raza SF, Ahmad S, Abdollahian M, Farooq M. Investigating the Impact of Shifting the Brick Kiln Industry from Conventional to Zigzag Technology for a Sustainable Environment. *Sustainability.* 2023;15(10):8291.
23. Begum BA, Biswas SK, Kim E, Hopke PK, Khaliquzzaman M. Investigation of sources of atmospheric aerosol at a hot spot area in Dhaka, Bangladesh. *J Air Waste Manag Assoc.* 2005;55(2):227–40.
24. Begum BA, Biswas SK, Nasiruddin M, Showkot Hossain AM, Hopke PK. Source identification of chittagong aerosol by receptor modeling. *Environ Eng Sci.* 2009;26(3):679–89.
25. Begum BA, Biswas SK, Hopke PK. Key issues in controlling air pollutants in Dhaka, Bangladesh. *Atmos Environ.* 2011;45(40):7705–13.
26. Begum BA, Hopke PK, Markwitz A. Air pollution by fine particulate matter in Bangladesh. *Atmospheric Pollut Res.* 2013;4(1):75–86.
27. Begum BA, Hopke PK. Identification of Sources from Chemical Characterization of Fine Particulate Matter and Assessment of Ambient Air Quality in Dhaka, Bangladesh. *Aerosol Air Qual Res.* 2019;19(1):118–28.
28. Begum BA, Hopke PK. Identification of haze-creating sources from fine particulate matter in Dhaka aerosol using carbon fractions. *J Air Waste Manag Assoc.* 2013;63(9):1046–57.

29. Bruce CW, Corral AY, Lara AS. Development of cleaner-burning brick kilns in Ciudad Juarez, Chihuahua, Mexico. *J Air Waste Manag Assoc.* 2007;57(4):444–56.
30. Christian TJ, Yokelson RJ, Cardenas B, Molina LT, Engling G, Hsu SC. Trace gas and particle emissions from domestic and industrial biofuel use and garbage burning in central Mexico. *Atmospheric Chem Phys.* 2010;10(2):565–84.
31. Co HX, Dung NT, Le HA, An DD, Chinh KV, Oanh NTK. Integrated management strategies for brick kiln emission reduction in Vietnam: a case study. *Int J Environ Stud.* 2009 1;66(1):113–24.
32. Flores-Ramírez R, Pérez-Vázquez FJ, Medellín-Garibay SE, Camacho Aldrete A, Vallejo-Pérez M, Díaz de León-Martínez L, et al. Exposure to Mixtures of Pollutants in Mexican Children from Marginalized Urban Areas. *Ann Glob Health.* 2018;84(2):250–6.
33. Goetz JD, Giordano MR, Stockwell CE, Christian TJ, Maharjan R, Adhikari S, et al. Speciated online PM<sub>1</sub> from South Asian combustion sources - Part 1: Fuel-based emission factors and size distributions. *Atmospheric Chem Phys.* 2018;18(19):14653–79.
34. Gupta L, Bansal M, Nandi P, Habib G, Raman RS. Source apportionment and potential source regions of size-resolved particulate matter at a heavily polluted industrial city in the Indo-Gangetic Plain. *Atmos Environ.* 2023;298:119614.
35. Haque MI, Nahar K, Kabir MH, Salam A. Particulate black carbon and gaseous emission from brick kilns in Greater Dhaka region, Bangladesh. *Air Qual Atmosphere Health.* 2018;11(8):925–35.
36. Hu Y, Li ZY, Wang YT, Wang L, Zhu HT, Chen L, et al. Emission Factors of NO<sub>x</sub>, SO<sub>2</sub>, PM and VOCs in Pharmaceuticals, Brick and Food Industries in Shanxi, China. *Aerosol Air Qual Res.* 2019;19(8):1785–97.
37. Hussain A, Khan NU, Ullah M, Imran M, Ibrahim M, Hussain J, et al. Brick kilns air pollution and its impact on the Peshawar City. *Pollution.* 2022;8(4):1266–73.
38. Iqbal Y, Sohail SM, Ahmad I, Saeed K. Determination of polyaromatic hydrocarbons in domestic, commercial and industrial soot samples. *Tenside Surfactants Deterg.* 2013;50(3):182–5.
39. Jan FA, Khan S, Ishaq M, Naeem M, Ahmad I, Hussain S. Brick kiln exhaust as a source of polycyclic aromatic hydrocarbons (PAHs) in the surrounding soil and plants: a case study from the city of Peshawar, Pakistan. *Arab J Geosci.* 2014;7(1):13–9.
40. Jayarathne T, Stockwell CE, Bhave PV, Praveen PS, Rathnayake CM, Islam MR, et al. Nepal Ambient Monitoring and Source Testing Experiment (NAMaSTE): emissions of particulate matter from wood- and dung-fueled cooking fires, garbage and crop residue burning, brick kilns, and other sources. *Atmospheric Chem Phys.* 2018;18(3):2259–86.
41. Kamal A, Syed JH, Li J, Zhang G, Mahmood A, Malik RN. Profile of atmospheric PAHs in Rawalpindi, Lahore and Gujranwala districts of Punjab Province (Pakistan). *Aerosol Air Qual Res.* 2016;16(4):1010–21.

42. Khanoranga, Khalid S. Using urinary fluoride and dental fluorosis as biomarkers of fluoride exposure in brick kiln workers in Balochistan, Pakistan. *Fluoride*. 2019;52(3):415–25.
43. Kim BM, Park JS, Kim SW, Kim H, Jeon H, Cho C, et al. Source apportionment of PM10 mass and particulate carbon in the Kathmandu Valley, Nepal. *Atmos Environ*. 2015;123:190–9.
44. Le HA, Oanh NT. Integrated assessment of brick kiln emission impacts on air quality. *Env Monit Assess*. 2010;171(1–4):381–94.
45. Martínez-Salinas RI, Elena Leal M, Batres-Esquivel LE, Domínguez-Cortinas G, Calderón J, Díaz-Barriga F, et al. Exposure of children to polycyclic aromatic hydrocarbons in Mexico: assessment of multiple sources. *Int Arch Occup Env Health*. 2010;83(6):617–23.
46. Mondal A, Das S, Sah RK, Bhattacharyya P, Bhattacharya SS. Environmental footprints of brick kiln bottom ashes: Geostatistical approach for assessment of metal toxicity. *Sci Total Env*. 2017; 609:215–24.
47. Ortinez-Alvarez A, Peralta O, Alvarez-Ospina H, Martinez-Arroyo A, Castro T, Paramo VH, et al. Concentration profile of elemental and organic carbon and personal exposure to other pollutants from brick kilns in Durango, Mexico. *Air Qual Atmosphere Health*. 2018;11(3):285–300.
48. Pangtey BS, Kumar S, Bihari V, Mathur N, Rastogi SK, Srivastava AK. An environmental profile of brick kilns in Lucknow. *J Env Sci Eng*. 2004;46(3):239–44.
49. Pérez-Maldonado IN, Ochoa-Martínez Á C, López-Ramírez ML, Varela-Silva JA. Urinary levels of 1-hydroxypyrene and health risk assessment in children living in Mexican communities with a high risk of contamination by polycyclic aromatic hydrocarbons (PAHs). *Int J Env Health Res*. 2019;29(3):348–57.
50. Rauf A, Shakir S, Ncube A, Abd-ur-Rehman HM, Janjua AK, Khanum S, et al. Prospects towards sustainability: A comparative study to evaluate the environmental performance of brick making kilns in Pakistan. *Environ Impact Assess Rev*. 2022;94:106746.
51. Ravankhah N, Mirzaei R, Masoum S. Determination of heavy metals in surface soils around the brick kilns in an arid region, Iran. *J Geochem Explor*. 2017;176:91–9.
52. Rokni M, Mohammadyan M, Hashemi ST, Asadi SM, Boogaard PJ, Heibati B, et al. Risk assessment of workers exposed to crystalline silica aerosols. *Hum Ecol Risk Assess*. 2016;22(8):1678–86.
53. Saikia J, Roy S, Bordoloi M, Saikia P, Saikia BK. Atmospheric aerosols around three different types of coal-based industries: Emission parameters, cytotoxicity assay, and principal component analysis. *J Aerosol Sci*. 2018;126:21–32.
54. Sarkar C, Sinha V, Sinha B, Panday AK, Rupakheti M, Lawrence MG. Source apportionment of NMVOCs in the Kathmandu Valley during the SusKat-ABC international field campaign using positive matrix factorization. *Atmospheric Chem Phys*. 2017;17(13):8129–56.

55. Stockwell CE, Christian TJ, Goetz JD, Jayarathne T, Bhave PV, Praveen PS, et al. Nepal Ambient Monitoring and Source Testing Experiment (NAMaSTE): emissions of trace gases and light-absorbing carbon from wood and dung cooking fires, garbage and crop residue burning, brick kilns, and other sources. *Atmospheric Chem Phys*. 2016;16(17):11043–81.
56. Sughis M, Nawrot TS, Riaz A, Ikram-Dar U, Mahmood A, Haufroid V, et al. Metal exposure in schoolchildren and working children. A urinary biomonitoring study from Lahore, Pakistan. *Int J Hyg Env Health*. 2014;217(6):669–77.
57. Suksuwan W, Yeranee K, Wae-hayee M. Environmental impacts and temperature variations in brick firing process in a Beehive Kiln. *Int J Environ Sci Technol*. 2023;20(8):8925–40.
58. Tabinda AB, Anjum Z, Yasar A, Rasheed R, Mahmood A, Iqbal A. Determination and dispersion of pollutants from different fuel types used in brick kilns by using Gaussian's plume model. *Energy Sources Part -Recovery Util Environ Eff*. 2019;41(8):1022–8.
59. Thygerson SM, Beard JD, House MJ, Smith RL, Burbidge HC, Andrus KN, et al. Air-quality assessment of on-site brick-kiln worker housing in Bhaktapur, Nepal: Chemical speciation of indoor and outdoor PM(2.5) pollution. *Int J Env Res Public Health*. 2019;16(21).
60. Ubaque CA, Hässig AG, Mendoza CA. Stack emissions tests in a brick manufacturing Hoffmann kiln: firing of municipal solid waste. *Waste Manag Res*. 2010;28(7):596–608.
61. Wang Z, Xu H, Gu Y, Feng R, Zhang N, Wang Q, et al. Chemical characterization of PM(2.5) in heavy polluted industrial zones in the Guanzhong Plain, northwest China: Determination of fingerprint source profiles. *Sci Total Env*. 2022;840:156729.
62. Weyant C, Athalye V, Ragavan S, Rajarathnam U, Lalchandani D, Maithel S, et al. Emissions from South Asian brick production. *Env Sci Technol*. 2014;48(11):6477–83.
63. Ying Y, Ma Y, Li X, Lin X. Emission and migration of PCDD/Fs and major air pollutants from co-processing of sewage sludge in brick kiln. *Chemosphere*. 2021;265:129120.
64. Zavala M, Molina LT, Maiz P, Monsivais I, Chow JC, Watson JG, et al. Black carbon, organic carbon, and co-pollutant emissions and energy efficiency from artisanal brick production in Mexico. *Atmospheric Chem Phys*. 2018;18(8):6023–37.
65. Zhang Y, Zhang Q, Yao Z, Li H. Particle Size and Mixing State of Freshly Emitted Black Carbon from Different Combustion Sources in China. *Env Sci Technol*. 2020;54(13):7766–74.
66. Zhou C, Liu G, Cheng S, Fang T, Lam PK. The environmental geochemistry of trace elements and naturally radionuclides in a coal gangue brick-making plant. *Sci Rep*. 2014;4:6221.
67. Zhou CC, Liu GJ, Fang T, Lam PKS, Lam JCW. Atmospheric emissions of toxic elements (As, Cd, Hg, and Pb) from brick making plants in China. *Rsc Adv*. 2015;5(19):14497–505.

68. Ali M, Channar MI, Shah AW, Rahman A, Khalid R, Sikandar S. Prevalence of acute respiratory infections among children under five years age living near brick kilns. *Pak J Med Health Sci.* 2013;7(4):1020–3.
69. Biswas AAA, Saha MK, Hasan I, Faisal M, Prokash J. Occupational Musculoskeletal and Respiratory Illness among Brick Kiln Industry Workers in Bangladesh. *Casp J Health Res.* 2018 Oct 1;3(3):80–5.
70. Das B. Assessment of occupational health problems and physiological stress among the brick field workers of West Bengal, India. *Int J Occup Med Env Health.* 2014;27(3):413–25.
71. Das B. Gender differences in prevalence of musculoskeletal disorders and physiological stress among the brick field workers of West Bengal, India. *Work.* 2019 Jul;63(3):389–403.
72. Das B. Health hazards and risks for musculoskeletal problems among child labourers in the brickfield sector of West Bengal, India. *Int Health.* 2019;11(4):250–7.
73. David M, Qurat UI A, Afzal M, Shoaib M, Aman F, Cloete KJ, et al. Study of occupational exposure to brick kiln emissions on heavy metal burden, biochemical profile, cortisol level and reproductive health risks among female workers at Rawat, Pakistan. *Environ Sci Pollut Res.* 2020;27:44073–88.
74. Erdim I, Aydogdu ET, Temel E, Karasu MF, Sapmaz E. Otorhinolaryngologic Evaluation of Brick Kiln Workers ENT Findings of Brick Kiln Workers. *Indian J Otolaryngol Head Neck Surg.* 2020;1–7.
75. Goel V, Shelja, Singh S, Sood S, Kaur S, Arvind A. Comparison of ventilator function test among non-smoker, smoker and smoker brick kiln workers. *Indian J Physiol Pharmacol.* 2015;59(5):55.
76. González N, Valero A, Rodríguez Y, Rodríguez J, Vargas L. Respiratory symptoms in brick workers in Tunja Boyacá, Colombia. *Med Interna Mex.* 2021;37(5):704–15.
77. Gupta R, Gupta R, Jan R, Langer B, Gupta RK, Singh P. Prevalence of respiratory morbidity among brick kiln workers: a cross sectional study from rural north India. 2019;7. Available from: <http://imsear.searo.who.int/handle/123456789/211412>
78. Kaushik R, Khaliq F, Subramanayaan M, Ahmed RS. Pulmonary dysfunctions, oxidative stress and DNA damage in brick kiln workers. *Hum Exp Toxicol.* 2012;31(11):1083–91.
79. Kazi RN, Bote MM. A cross sectional study to determine the health profile of brick kiln workers. 2019;6. Available from: <http://imsear.searo.who.int/handle/123456789/201905>
80. Khisroon M, Khan A, Imran M, Zaidi F, Ahmadullah F, Fatima SH. Biomonitoring of DNA damage in individuals exposed to brick kiln pollution from Peshawar, Khyber Pakhtunkhwa, Pakistan. *Arch Environ Occup Health.* 2018;73(2):115–20.
81. Rahman A, Saeed A, Ali M. Prevalence of chronic obstructive pulmonary disease as occupational lung disease among brick kiln workers. *Pak J Med Health Sci.* 2013;7(3):618–21.

82. Raza M, Mahjabeen I, Fahim M, Malik WA, Khan AU, Kayani MA, et al. Redox balance and DNA fragmentation in arsenic-exposed occupational workers from different industries of Pakistan. *Env Sci Pollut Res Int*. 2018;25(33):33381–90.
83. Raza A, Ali Z. Assessment of obstructive and restrictive patterns of lung function among the workers of brick kilns. *Int J Occup Saf Ergon*. 2022;28(4):2333–9.
84. Roshania RP, Giri R, Cunningham SA, Young MF, Webb-Girard A, Das A, et al. Early life migration and undernutrition among circular migrant children: An observational study in the brick kilns of Bihar, India. *J Glob Health*. 2022;12:04008.
85. Saldaña-Villanueva K, Méndez-Rodríguez KB, Zamora-Mendoza BN, Gómez-Gómez A, Díaz-Barriga F, Pérez-Vázquez FJ. Health effects of informal precarious workers in occupational environments with high exposure to pollutants. *Env Sci Pollut Res Int*. 2023;30(31):76818–28.
86. Sherris AR, Begum BA, Baiocchi M, Goswami D, Hopke PK, Brooks WA, et al. Associations between ambient fine particulate matter and child respiratory infection: The role of particulate matter source composition in Dhaka, Bangladesh. *Env Pollut*. 2021;290:118073.
87. Sheta S, El Laithy N. Brick kiln industry and workers' chronic respiratory health problems in Mit Ghamr District, Dakahlia Governorate. *Egypt J Occup Med*. 2015 Jan 1;39(1):37–51.
88. Shrestha KP, Sahoo H, Bharadwaz MP. Treatment seeking behavior and level of treatment among brick kiln workers: A Study in Azamgarh District, Uttar Pradesh. *Clin Epidemiol Glob Health*. 2021;12:100861.
89. Sinaga HT, Achmad N, Manalu M, Perangin-Angin S, Doloksaribu LG. Length attainment and stunting prevalence of children aged 0–24 months living in the area of clay brick kilns in Pagar Merbau Sub District, Indonesia. *Open Access Maced J Med Sci*. 2022;10:155–60.
90. Srivastava AK, Rastogi SK, Mathur N, Bihari V. Health risk assessment of brick kiln workers. *Indian J Occup Environ Med*. 2002;6(4):150–5.
91. Subhanullah M, Ullah S, Javed MF, Ullah R, Akbar TA, Ullah W, et al. Assessment and Impacts of Air Pollution from Brick Kilns on Public Health in Northern Pakistan. *Atmosphere*. 2022;13(8):1231.
92. Thomas BE, Charles N, Watson B, Chandrasekaran V, Senthil Kumar R, Dhanalakshmi A, et al. Prevalence of chest symptoms amongst brick kiln migrant workers and care seeking behaviour: a study from South India. *J Public Health Oxf*. 2015;37(4):590–6.
93. Sanjel S, Khanal SN, Thygerson SM, Carter WS, Johnston JD, Joshi SK. Respiratory symptoms and illnesses related to the concentration of airborne particulate matter among brick kiln workers in Kathmandu valley, Nepal. *Ann Occup Env Med*. 2017;29:9.
94. Khan AR, Khan AA, Iqbal J, Majeed A, Imran RM, Abbas M, et al. Air pollutant emissions from sugar mills and brick kilns: impact on environment and public health. *Int J Environ Sci Technol*. 2019;16(12):8607–16.

95. Hamid A, Riaz A, Noor F, Mazhar I. Assessment and mapping of total suspended particulate and soil quality around brick kilns and occupational health issues among brick kilns workers in Pakistan. *Env Sci Pollut Res Int.* 2023;30(2):3335–50.
96. Ahmad S, Arif B, Akram Z, Ahmed MW, Khan AU, Hussain MZ, et al. Association of intronic polymorphisms (rs1549339, rs13402242) and mRNA expression variations in PSMD1 gene in arsenic-exposed workers. *Env Sci Pollut Res Int.* 2020;27(10):11425–37.
97. Akram Z, Mahjabeen I, Umair M, Fahim M, Kayani MA, Fatima L, et al. Expression variation of OGG1 and HPRT gene and DNA damage in arsenic exposed industrial workers. *PLoS One.* 2022;17(9): e0273211.
98. Berumen-Rodríguez AA, Alcántara-Quintana LE, Pérez-Vázquez FJ, Zamora-Mendoza BN, Díaz de León-Martínez L, Díaz Barriga F, et al. Assessment of inflammatory cytokines in exhaled breath condensate and exposure to mixtures of organic pollutants in brick workers. *Env Sci Pollut Res Int.* 2023;30(5):13270–82.
99. Berumen-Rodríguez AA, de Leon-Martinez LD, Zamora-Mendoza BN, Orta-Arellanos H, Saldana-Villanueva K, Barrera-Lopez V, et al. Evaluation of respiratory function and biomarkers of exposure to mixtures of pollutants in brick-kilns workers from a marginalized urban area in Mexico. *Environ Sci Pollut Res.* 2021;28(47):67833–42.
100. David M, Turi N, Ain QU, Rahman H, Jahan S. Evaluation of environmental effects of heavy metals on biochemical profile and oxidative stress among children at brick kiln sites. *Arch Env Occup Health.* 2021;76(7):441–9.
101. Jahan S, Falah S, Ullah H, Ullah A, Rauf N. Antioxidant enzymes status and reproductive health of adult male workers exposed to brick kiln pollutants in Pakistan. *Env Sci Pollut Res Int.* 2016;23(13):12932–40.
102. Joshi SK, Dudani I. Environmental health effects of brick kilns in Kathmandu valley. *Kathmandu Univ Med J KUMJ.* 2008;6(1):3–11.
103. Kamal A, Malik RN, Martellini T, Cincinelli A. Cancer risk evaluation of brick kiln workers exposed to dust bound PAHs in Punjab province (Pakistan). *Sci Total Env.* 2014;493:562–70.
104. Kamal A, Malik RN, Martellini T, Cincinelli A. PAH exposure biomarkers are associated with clinico-chemical changes in the brick kiln workers in Pakistan. *Sci Total Env.* 2014;490:521–7.
105. Love RG, Waclawski ER, Maclaren WM, Wetherill GZ, Groat SK, Porteous RH, et al. Risks of respiratory disease in the heavy clay industry. *Occup Env Med.* 1999;56(2):124–33.
106. Raza A, Qamer MF, Afsheen S, Adnan M, Naeem S, Atiq M. Particulate matter associated lung function decline in brick kiln workers of Jalalpur Jattan, Pakistan. *Pak J Zool.* 2014;46(1):237–43.
107. Raza A, Ali Z. Impact of air pollution generated by brick kilns on the pulmonary health of workers. *J Health Pollut.* 2021;11(31):210906.

108. Sanjel S, Khanal SN, Thygerson SM, Khanal K, Pun Z, Tamang S, et al. Airborne particulate matter and health condition in brick kiln workers in Kathmandu Valley, Nepal. *Kathmandu Univ Med J KUMJ*. 2016;14(54):159–66.
109. Vaidya VG, Mamulwar MS, Ray SB, Beena R, Bhathlawande PV, Ubale S. Occupational health hazards of women working in brick kiln and construction industry. *J Krishna Inst Med Sci Univ*. 2015;4(1):45–54.
110. Zawilla N, Taha F, Ibrahim Y. Liver functions in silica-exposed workers in Egypt: possible role of matrix remodeling and immunological factors. *Int J Occup Env Health*. 2014;20(2):146–56.
111. S. Werden B, R. Giordano M, Douglas Goetz J, Robiul Islam M, V. Bhave P, Praveen Puppala S, et al. Pre-monsoon submicron aerosol composition and source contribution in the Kathmandu Valley, Nepal. *Environ Sci Atmospheres*. 2022;2(5):978–99.
112. Werden BS, Giordano MR, Mahata K, Islam MdR, Goetz JD, Puppala SP, et al. Submicron Aerosol Composition and Source Contribution across the Kathmandu Valley, Nepal, in Winter. *ACS Earth Space Chem*. 2023 Jan 19;7(1):49–68.
113. Tandon S, Gupta S, Singh S, Kumar A. Respiratory abnormalities among occupationally exposed, non-smoking brick kiln workers from Punjab, India. *Int J Occup Env Med*. 2017;8(3):166–73.
114. Pokhrel B, Gong P, Wang X, Wang C, Gao S. Polycyclic aromatic hydrocarbons in the urban atmosphere of Nepal: Distribution, sources, seasonal trends, and cancer risk. *Sci Total Environ*. 2018 Mar 15;618:1583–90.
115. Shaikh K, Imran U, Khan A, Khokhar WA, Bakhsh H. Health risk assessment of emissions from brick kilns in Tando Hyder, Sindh, Pakistan using the AERMOD dispersion model. *SN Appl Sci*. 2020 Jun 26;2(7):1290.
116. Mills KT, Stefanescu A, He J. The global epidemiology of hypertension. *Nat Rev Nephrol*. 2020 Apr;16(4):223–37.
117. Li Z, Lin L, Wu H, Yan L, Wang H, Yang H, et al. Global, regional, and national death, and disability-adjusted life-years (DALYs) for cardiovascular disease in 2017 and trends and risk analysis from 1990 to 2017 using the global burden of disease study and implications for prevention. *Front Public Health*. 2021;9:559751.
118. Liu Y, Rong Y, Steenland K, Christiani DC, Huang X, Wu T, et al. Long-term exposure to crystalline silica and risk of heart disease mortality. *Epidemiology*. 2014;25(5):689–96.
119. Occupational Exposure to Respirable Crystalline Silica [Internet]. Federal Register. 2016 [cited 2023 Sep 10]. Available from: <https://www.federalregister.gov/documents/2016/03/25/2016-04800/occupational-exposure-to-respirable-crystalline-silica>



120. Chen W, Zhuang Z, Attfield M, Chen B, Gao P, Harrison J, et al. Exposure to silica and silicosis among tin miners in China: exposure-response analyses and risk assessment. *Occup Environ Med*. 2001 Jan;58(1):31–7.
121. Dosemeci M, McLaughlin JK, Chen JQ, Hearl F, Chen RG, McCawley M, et al. Historical total and respirable silica dust exposure levels in mines and pottery factories in China. *Scand J Work Environ Health*. 1995;21(2):39–43.
122. Merget R, Bauer T, Küpper H, Philippou S, Bauer H, Breitstadt R, et al. Health hazards due to the inhalation of amorphous silica. *Arch Toxicol*. 2002 Jan 1;75(11):625–34.
123. McMichael AJ. Standardized mortality ratios and the “healthy worker effect”: Scratching beneath the surface. *J Occup Med Off Publ Ind Med Assoc*. 1976 Mar;18(3):165–8.
124. Wang D, Yang M, Liu Y, Ma J, Shi T, Chen W. Association of silica dust exposure and cigarette smoking with mortality among mine and pottery workers in China. *JAMA Netw Open*. 2020 Apr 14;3(4):e202787.
125. Ali M, Rahman A, Qadir S. Prevalence of acute respiratory infections in under five years age children, living near the brick kilns. *Pak J Med Health Sci*. 2020;14(3):1047–8.

## FIGURE CAPTIONS

**Figure 1 Selection process for identifying original articles for the systematic review of brick kiln pollution and its impact on human health.**

**Figure 2 Number of studies per country included in this systematic review.**

**Figure 3 Mean emission factors in (a) g/kg brick, (b) g/kg fuel, and (c) g/MJ.** We plot emission factors for multiple pollutants, categorized by brick kiln design and fuel used. Symbols in red and blue represent kiln types categorized as traditional and improved, respectively. Symbols in grey represent kilns whose type was not specified. Brick kilns that used coal only are shown as squares, those that used coal and biomass are shown as triangles, and those that used biomass only are shown as circles. Means for traditional and improved kiln designs are shown in the red and blue diamonds, respectively. Values displayed on the right of each plot represent the mean emission factors  $\pm$  standard deviations for traditional vs improved kiln designs, weighted by sample size.

**Figure 4 Mean pollutant concentrations from (a) in-stack measurements, and (b) brick kiln site measurements.** Symbols in red and blue represent kiln types categorized as traditional and improved, respectively. Symbols in grey represent kilns whose type was not specified. Brick kilns that used coal only are shown as squares, those that used coal and biomass are shown as upward-pointing triangles, those that used coal and solid waste are shown as downward-pointing triangles, and those that used biomass only are shown as circles. Means for traditional and improved kiln designs are shown in the red and blue diamonds, respectively. Values displayed on the right of each plot represent the mean pollutant concentrations  $\pm$  standard deviations for traditional vs improved kiln designs, weighted by sample size.

**Figure 5 Geometric means and 95% confidence intervals of personal exposures by brick kiln job type.** Diamonds and error bars represent the pooled geometric means and 95% confidence intervals, respectively, for each pollutant. Values displayed on the right represent pooled geometric means and 95% confidence intervals for each pollutant.

**Figure 6 Mean values of lung function for brick kiln workers and controls, and mean difference between brick kiln workers and controls.**

**Table 1. Mean values of lung function for brick kiln workers and controls stratified by smoking status, and mean difference between brick kiln workers and controls stratified by smoking status.**

	Mean $\pm$ SD (n)			
	Brick kiln workers		Reference (or control) group	
	Smokers	Non-smokers	Smokers	Non-smokers
<b>FEV<sub>1</sub> (in L)</b>				
Goel 2015 <sup>75</sup>	2.15 $\pm$ 0.50 (N/A)	N/A	2.75 $\pm$ 0.73 (N/A)	3.53 $\pm$ 0.24 (N/A)
Raza 2021 <sup>107</sup>	1.98 $\pm$ 0.53 (25)	2.16 $\pm$ 0.62 (35)	N/A	N/A
Tandon 2017 <sup>113</sup>	N/A	1.65 $\pm$ 0.56 (110)	N/A	N/A
<b>FVC (in L)</b>				
Goel 2015 <sup>75</sup>	2.56 $\pm$ 0.66 (N/A)	N/A	3.17 $\pm$ 0.69 (N/A)	3.86 $\pm$ 0.25 (N/A)
Raza 2021 <sup>107</sup>	2.27 $\pm$ 0.67 (25)	2.53 $\pm$ 0.74 (35)	N/A	N/A
Tandon 2017 <sup>113</sup>	N/A	2.01 $\pm$ 0.60 (110)	N/A	N/A
<b>FEV<sub>1</sub>/FVC (in %)</b>				
Goel 2015 <sup>75</sup>	82.8 $\pm$ 8.5 (N/A)	N/A	85.9 $\pm$ 7.5 (N/A)	91.4 $\pm$ 3.6 (N/A)
Srivastava 2002 <sup>90</sup>	74.2 $\pm$ 8.8 (47)	70.4 $\pm$ 6.2 (23)	79.4 $\pm$ 6.8 (52)	78.6 $\pm$ 5.1 (54)
Tandon 2017 <sup>113</sup>	N/A	83.69 $\pm$ 16.02 (110)	N/A	N/A

**Table 2. Mean percent predicted values of lung function for brick kiln workers and controls, and mean difference between brick kiln workers and controls.**

<b>Lung function value</b>	<b>Brick kiln worker</b>	<b>Reference (or control) group</b>	<b>Mean difference (95% CI)</b>
<b>FEV<sub>1</sub> percent predicted</b>			
Sheta 2015 <sup>87</sup>	74.1 ± 7.8 (173)	81.8 ± 10.1 (170)	-7.7 (-9.6 to -5.8)
Srivastava 2002 <sup>90</sup> (non-smokers)	N/A	N/A	N/A
Srivastava 2002 <sup>90</sup> (smokers)	N/A	N/A	N/A
Tandon 2017 <sup>113</sup>	86.5 ± 12.0 (110)	93.0 ± 8.5 (90)	-6.5 (-9.4 to -3.6)
<b>FVC percent predicted</b>			
Sheta 2015 <sup>87</sup>	75.9 ± 6.7 (173)	80.3 ± 6.1 (170)	-4.4 (-5.8 to -3.0)
Srivastava 2002 <sup>90</sup> (non-smokers)	81.2 ± 4.6 (52)	83.6 ± 3.8 (54)	-2.4 (-4.0 to -0.8)
Srivastava 2002 <sup>90</sup> (smokers)	79.2 ± 8.8 (47)	81.1 ± 4.8 (23)	-1.9 (-5.1 to 1.3)
Tandon 2017 <sup>113</sup>	88.9 ± 9.3 (110)	94.4 ± 8.9 (90)	-5.5 (-8.0 to -3.0)
<b>FEV<sub>1</sub>/FVC percent predicted</b>			
Sheta 2015 <sup>87</sup>	N/A	N/A	N/A
Srivastava 2002 <sup>90</sup> (non-smokers)	79.4 ± 6.8 (52)	78.6 ± 5.1 (54)	0.8 (-1.5 to 3.1)
Srivastava 2002 <sup>90</sup> (smokers)	74.2 ± 8.8 (47)	70.4 ± 6.2 (23)	3.8 (0.2 to 7.4)
Tandon 2017 <sup>113</sup>	80.7 ± 4.8 (110)	85.2 ± 5.0 (90)	-4.5 (-5.9 to -3.1)

**Table 3. Prevalence of respiratory symptoms or chronic respiratory disease in brick kiln workers or controls (or participants living near or far from kilns) and mean difference between brick kilns workers and controls.**

Symptom or disease	Brick kiln worker or lives near brick kilns, % (n*/total)	Reference group (non-brick kiln worker, other control or lives far), % (n*/total)	Mean difference (95% CI)
<b>Cough†</b>			
Biswas 2018 <sup>69</sup>	39.1% ([86]/220)		
Hamid 2023 <sup>95</sup> (dry cough)	72.9% ([321]/440)		
Khan 2019 <sup>94</sup> (non-crushing period)	75% (75/100)	32% (32/100)	43% (30.1% to 55.5%)
Khan 2019 <sup>94</sup> (crushing period)	78% (78/100)	36% (36/100)	52% (29.6% to 54.5%)
Rahman 2013 <sup>81</sup>	57% ([232]/407)	6% ([24]/407)	51% (45.7% to 56.3%)
Raza 2021 <sup>107</sup>	50% (30/60)		
Raza 2022 <sup>83</sup>	76.9% (389/506)		
Sanjel 2017 <sup>93</sup>	55.2% (221/400)	28.8% (115/400)	26.8% (19.8% to 33.0%)
Tandon 2017 <sup>113</sup>	67.3% (74/110)	24.4% (22/90)	42.9% (30.4% to 55.4%)
Vaidya 2015 <sup>109†</sup>	18% ([7]/40)	20% ([13]/63)	2% (-17%.5 to 13.5%)
Overall	56.8% (54.9% to 58.7%)		32.3% (28.6% to 35.9%)
<b>Chronic cough</b>			
Biswas 2018 <sup>69</sup>	6.8% ([15]/220)		
Gonzalez 2021 <sup>76</sup>	26.8% (22/82)		
Gupta 2019 <sup>77</sup>	23.6% (163/692)		
Raza 2021 <sup>107</sup>	11.7% (7/60)		
Raza 2022 <sup>83</sup>	66.4% (336/506)		
Sanjel 2017 <sup>93</sup>	14.3% (35/244)	6.8% (11/162)	7.5% (1.6% to 13.4%)
Shaikh 2012 <sup>5</sup> (non-smokers)	11.3% ([22]/194)		
Shaikh 2012 <sup>5</sup> (smokers)	37% ([54]/146)		
Sheta 2015 <sup>87</sup>	34.7% (60/173)	10% (17/170)	24.7% (16.3% to 33.1%)
Overall	25.8% (24.3% to 27.4%)		20.6% (16.0% to 25.2%)
<b>Phlegm/sputum</b>			
Biswas 2018 <sup>69</sup>	37.7% ([83]/220)		
Gupta 2019 <sup>77</sup>	22.8% (158/692)		
Rahman 2013 <sup>81</sup>	33% ([134]/407)	3% ([12]/407)	30% (25.1% to 34.9%)

	Raza 2021 <sup>107</sup>	21.7% (13/60)		
	Raza 2022 <sup>83</sup>	61.5% (311/506)		
	Sanjel 2017 <sup>93</sup>	42.2% (169/400)	11.2% (45/400)	31% (25.3% to 36.7%)
	Overall	36.5% (34.6% to 38.4%)		30.5% (26.8% to 34.2%)
<b>Chronic phlegm</b>				
	Biswas 2018 <sup>69</sup>	19.1% ([42]/220)		
	Raza 2021 <sup>107</sup>	11.7% (7/60)		
	Raza 2022 <sup>83</sup>	62.5% (316/506)		
	Sanjel 2017 <sup>93</sup>	16.6% (28/169)	5.8% (5/86)	10.8% (3.3% to 18.3%)
	Shaikh 2012 <sup>5</sup> (non-smokers)	9.8% ([19]/194)		
	Shaikh 2012 <sup>5</sup> (smokers)	36.3% ([53]/146)		
	Sheta 2015 <sup>87</sup>	19.7% (34/173)	6.5% (11/170)	13.2% (6.2% to 20.2%)
	Tandon 2017 <sup>113</sup>	70% (77/110)	34.4% (31/90)	35.6% (23.6% to 47.6%)
	Overall	30.7% (28.7% to 32.7%)		19.9% (15.1% to 24.6%)
<b>Wheezing</b>				
	Biswas 2018 <sup>69</sup>	37.7% ([83]/220)		
	Gonzalez 2021 <sup>76</sup>	30.5% (25/82)		
	Love 1999 <sup>105</sup>	20.6% (381/1851)		
	Raza 2021 <sup>107</sup>	20% (12/60)		
	Raza 2022 <sup>83</sup>	56.9% (288/506)		
	Sanjel 2017 <sup>93</sup>	11.3% (45/400)	2% (8/400)	9.3% (5.9% to 12.7%)
	Shaikh 2012 <sup>5</sup> (non-smokers)	13.4% ([26]/194)		
	Shaikh 2012 <sup>5</sup> (smokers)	27.4% ([40]/146)		
	Sheta 2015 <sup>87</sup>	20.2% (35/173)	8.8% (15/170)	11.4% (4.1% to 18.7%)
	Overall	26.4% (25.1% to 27.7%)		10.4% (7.3% to 13.4%)
<b>Asthma<sup>††</sup></b>				
	Biswas 2018 <sup>69</sup>	35.0% ([77]/220)		
	David 2022 <sup>9</sup>	8% (28/346)	0% (0/200)	8% (5.1% to 10.9%)
	Khan 2019 <sup>94</sup> (non-crushing period)	33% (33/100)	18% (18/100)	15% (3.1% to 26.9%)
	Khan 2019 <sup>94</sup> (crushing period)	38% (37/100)	16% (16/100)	22% (10.1% to 33.9%)
	Raza 2021 <sup>107</sup> (self-reported)	3.3% (2/60)		
	Raza 2021 <sup>107</sup> (physician-diagnosed)	0% (0/60)		
	Raza 2022 <sup>83</sup> (self-reported)	14.6% (74/506)		
	Raza 2022 <sup>83</sup> (physician-diagnosed)	9.5% (48/506)		

Sanjel 2017 <sup>93</sup>	6.3% ([25]/400)	1.8% ([7]/400)	4.6% (1.8% to 7.2%)
Shaikh 2012 <sup>5</sup>	8.2% ([28]/340)		
Sheta 2015 <sup>87</sup>	15.6% (27/173)	7.1% (12/170)	8.5% (0.2% to 15.1%)
Overall	15.5% (14.2% to 16.7%)		9.0% (7.1% to 10.9%)
<b>Chronic bronchitis</b>			
Biswas 2018 <sup>69</sup>	17.7% ([39]/220)		
Gupta 2019 <sup>77</sup>	20.5% (142/692)		
Love 1999 <sup>105</sup>	14.2% (263/1851)		
Sanjel 2017 <sup>93</sup>	19.0% ([76]/400)	10.8% ([43]/400)	8.2% (3.3% to 13.1%)
Shaikh 2012 <sup>5</sup>	17.1% ([58]/340)		
Sheta 2015 <sup>87</sup>	19.7% (34/173)	6.5% (11/170)	13.2% (6.2% to 20.2%)
Srivastava 2002 <sup>90</sup>	4.7% ([6]/131)		
Overall	16.1% (15.0% to 17.3%)		10.7% (6.7% to 14.7%)
<b>COPD<sup>‡</sup></b>			
Berumen-Rodriguez 2021 <sup>99</sup>	46% ([19]/41)		
Berumen-Rodriguez 2023 <sup>98</sup>	38% ([8]/21)		
Khan 2019 <sup>94</sup> (non-crushing period)	37% (37/100)	14% (14/100)	23% (11.3% to 34.7%)
Khan 2019 <sup>94</sup> (crushing period)	38% (38/100)	16% (16/100)	22% (10.1% to 33.9%)
Rahman 2013 <sup>81</sup>	18.9% ([77]/407)	2.6% ([11]/407)	16.3% (12.2% to 20.4%)
<b>Acute respiratory infections</b>			
Ali 2013 <sup>68</sup>	24.5% (NA/NA)	12.8% (NA/NA)	11.7%
Khan 2019 <sup>94</sup> (non-crushing period)	50% (50/100)	26% (26/100)	24% (11.0% to 37.0%)
Khan 2019 <sup>94</sup> (crushing period)	53% (53/100)	28% (28/100)	25% (11.8% to 38.2%)
<b>Respiratory problems (overall)</b>			
Biswas 2018 <sup>69</sup>	63.6% ([140]/220)		
Das 2019a <sup>72</sup>	52.5% ([59]/112)	3.5% ([4]/120)	48.7% (39.2% to 58.8%)
Gonzalez 2021 <sup>76</sup>	20.7% (17/82)		
Kazi 2019 <sup>79</sup>	27.4% (115/420)		
Sheta 2015 <sup>87</sup>	39.9% (69/173)	11.7% (20/170)	28.2% (19.5% to 37%)
Shrestha 2021 <sup>88</sup>	53.8% ([242]/450)		
Srivastava 2002 <sup>90</sup>	12.1% (31/257)	4.6% (6/131)	7.5% (2.1% to 12.9%)
Subhanullah 2022 <sup>91</sup>	62% ([31]/50)		
Overall	41.5% (39.5% to 43.5%)		28.2% (24.1% to 32.4%)
<b>Dyspnea<sup>‡</sup></b>			

Gonzalez 2021 <sup>76</sup> (at rest)	14.6% (12/82)		
Gonzalez 2021 <sup>76</sup> (with exercise)	20.7% (17/82)		
Gupta 2019 <sup>77</sup> (Grades 2+)	9.2% (64/692)		
Love 1999 <sup>105</sup> (breathlessness)	4.4% (81/1851)		
Rahman 2013 <sup>81</sup> (dyspnea)	14% ([57]/407)	1% ([4]/407)	13% (9.5% to 16.5%)
Raza 2021 <sup>107</sup> (Grade 1 and 2 dyspnea)	38.3% (23/60)		
Raza 2022 <sup>83</sup> (Grade 1 and 2 dyspnea)	75.7% (383/506)		
Sanjel 2016 <sup>108</sup> (breathlessness)	31.5% (126/400)	8.2% (33/400)	23.3% (18.0% to 28.6%)
Shaikh 2012 <sup>5</sup> (Grade 3, non-smokers)	7.75% ([15]/194)		
Shaikh 2012 <sup>5</sup> (Grade 3, smokers)	7.5% ([11]/146)		
Sheta 2015 <sup>87</sup> (dyspnea)	21.4% (37/173)	5.3% (9/170)	16.1% (9.1% to 23.1%)
Tandon 2017 <sup>113</sup> (shortness of breath)	60% (66/110)	32.2% (29/90)	27.8% (14.5% to 41.1%)
Vaidya 2015 <sup>109</sup> (breathlessness)	20% (N/A)	10% (N/A)	10%

\* [n] = number calculated based on percentage and total as n was not reported.

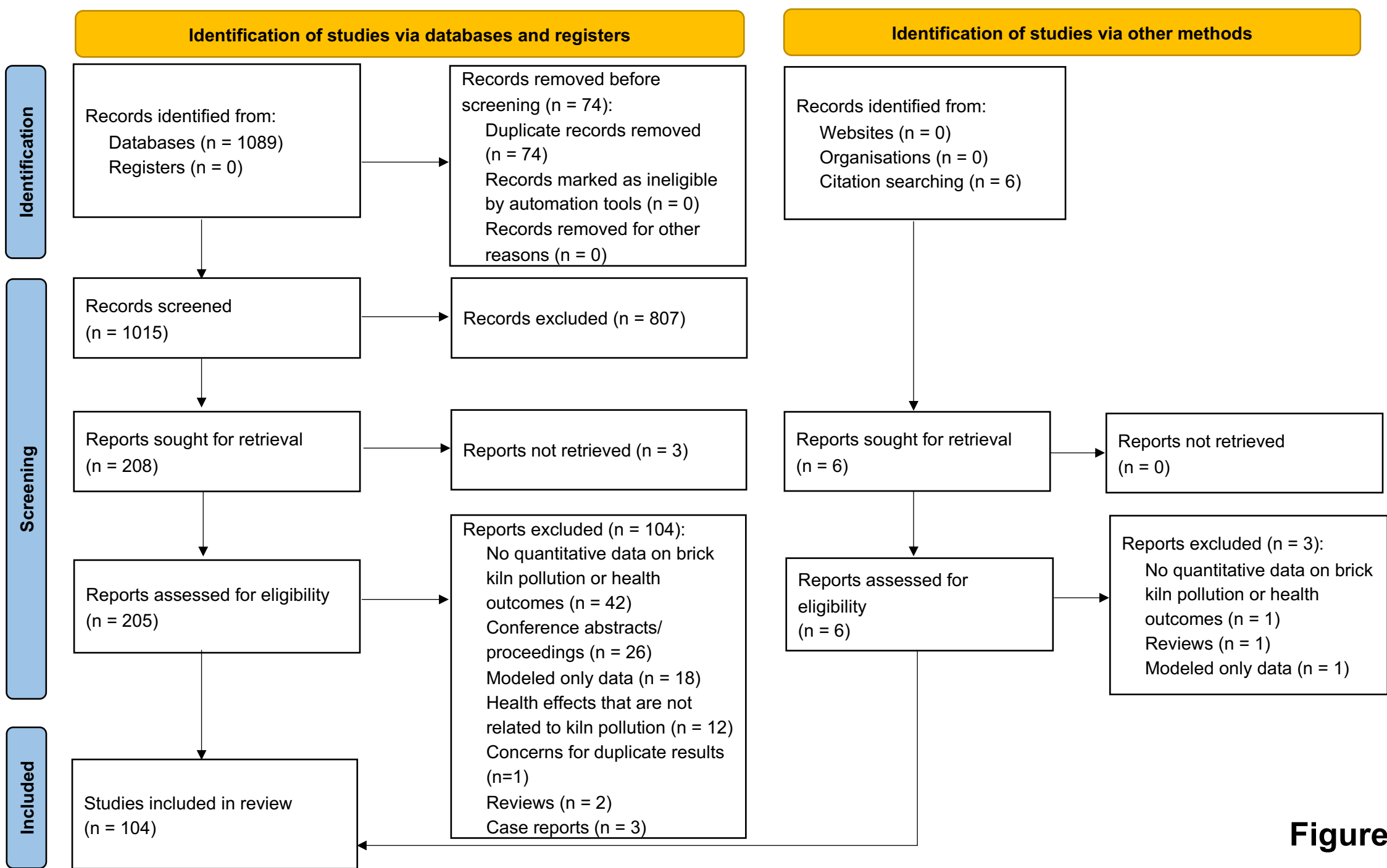
† Reference group is made up of construction workers.

‡ Overall estimates do not include data from Khan 2019 crushing period.

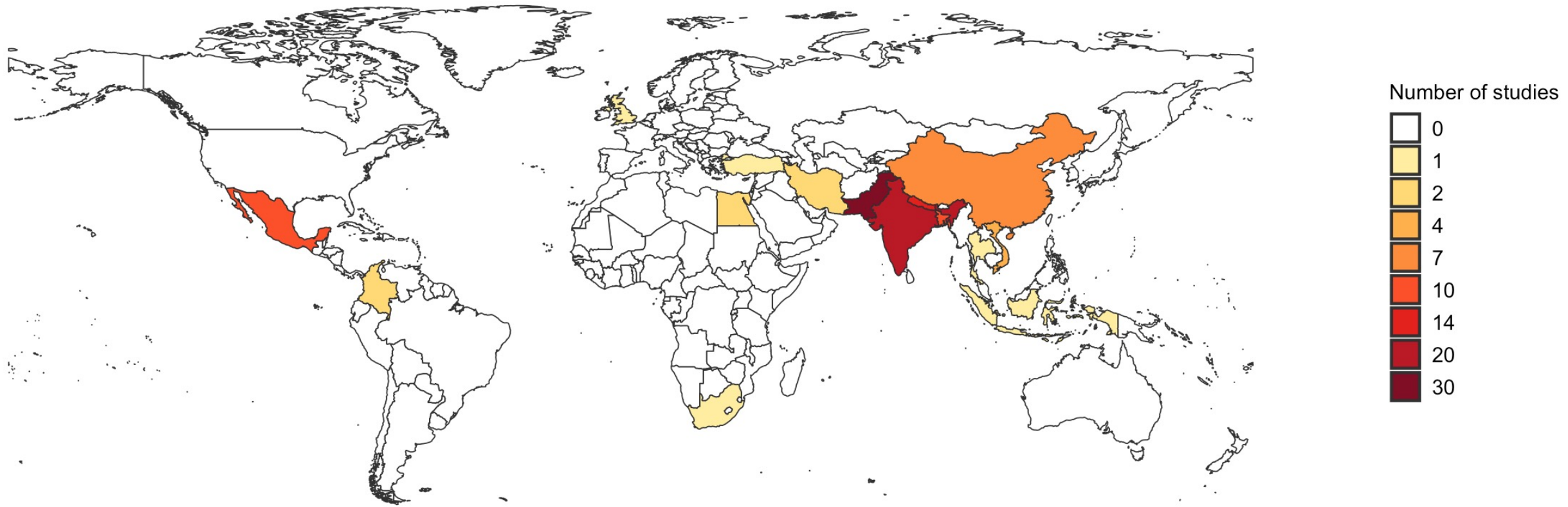
‡ Overall estimates do not include Raza 2021 or Raza 2022 physician-diagnosis of asthma.

‡ We do not calculate an overall score for dyspnea or COPD because authors used different definitions or approaches across studies.

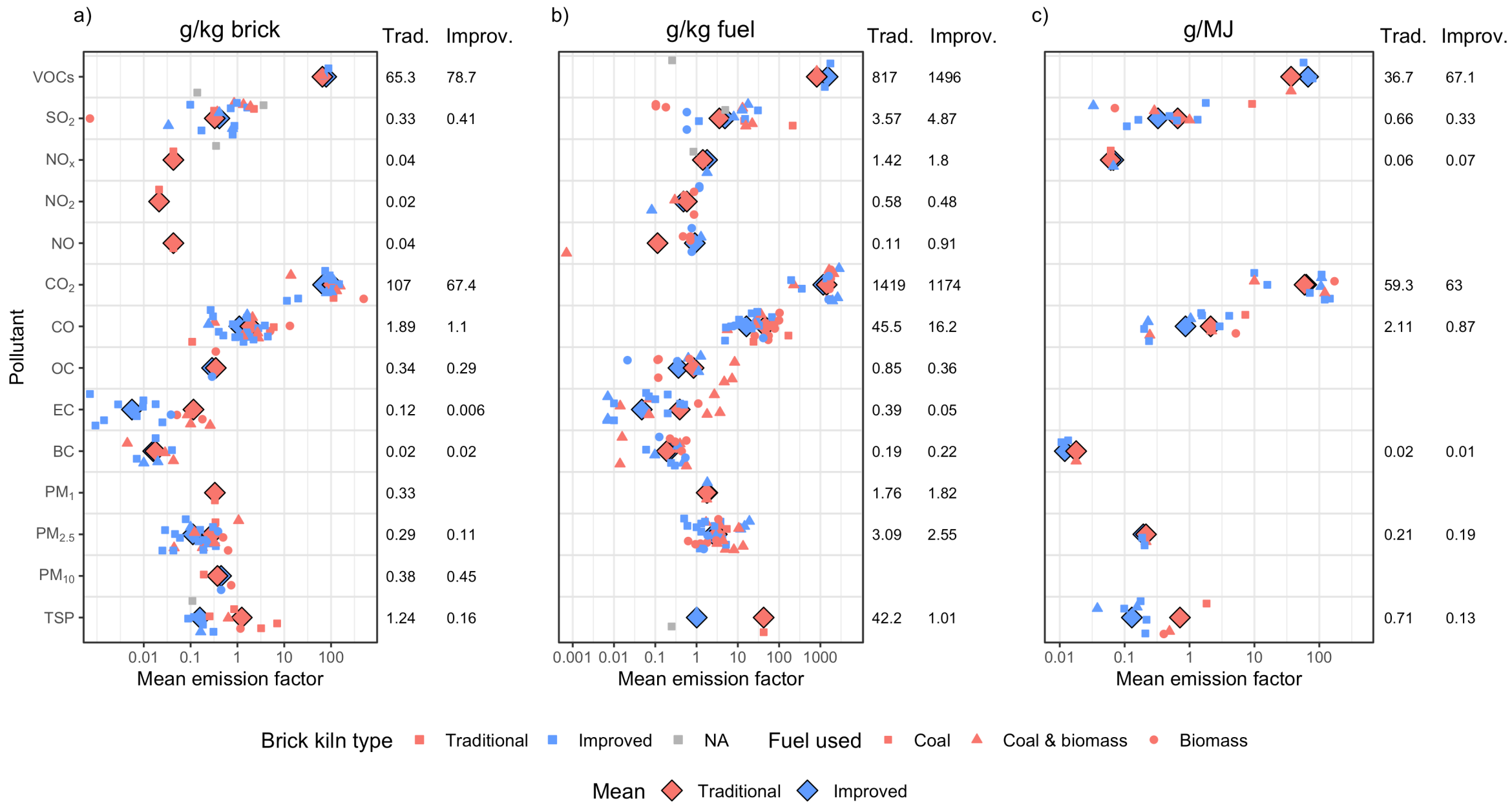




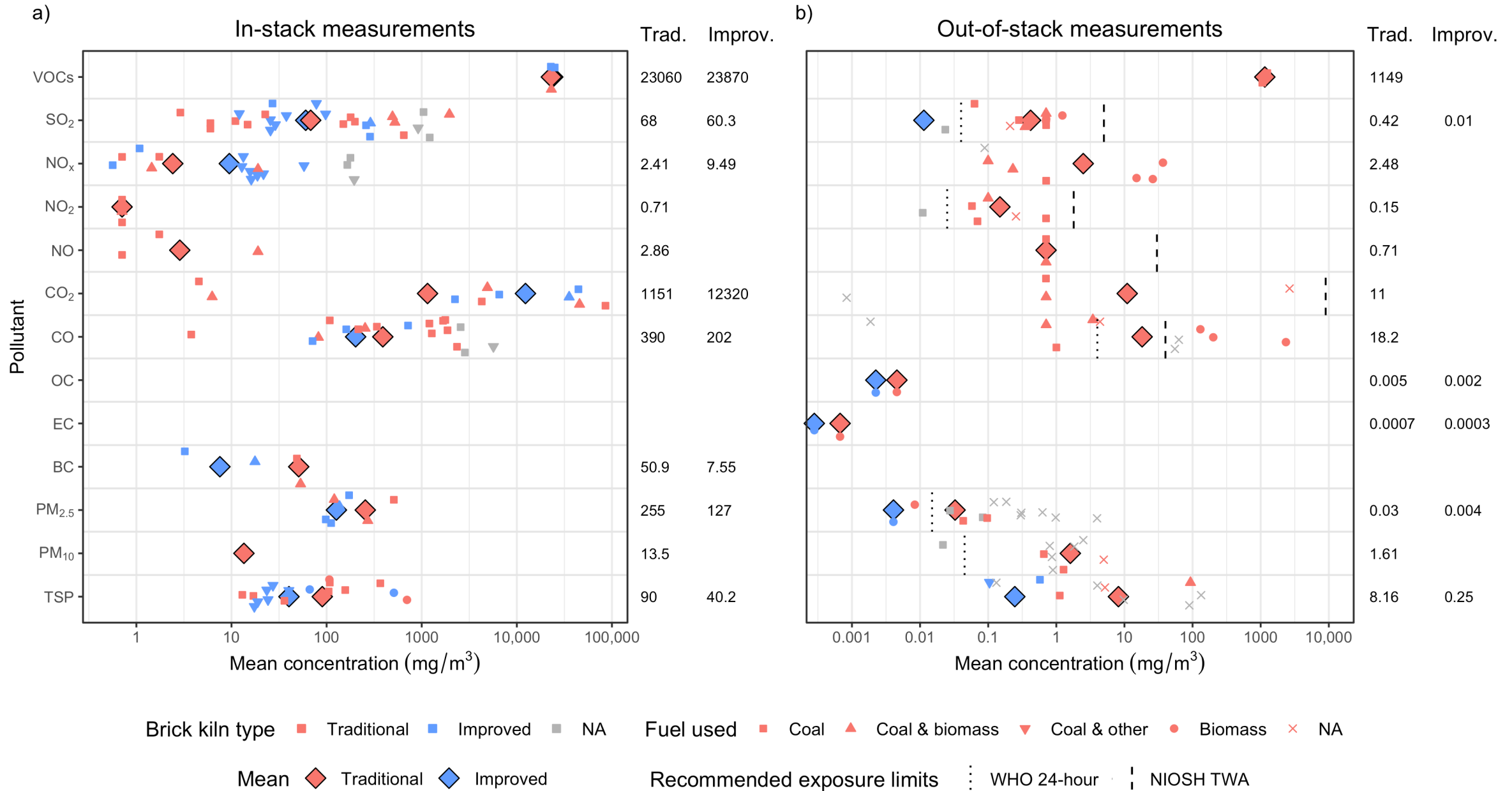
**Figure 1.**



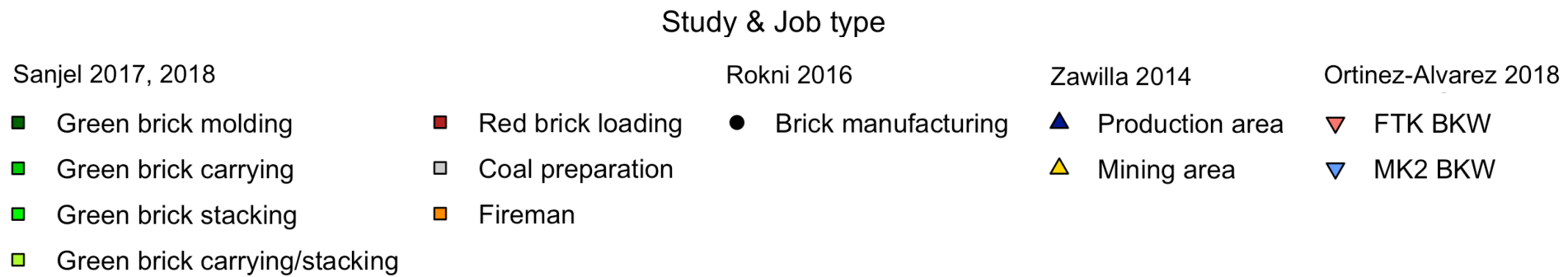
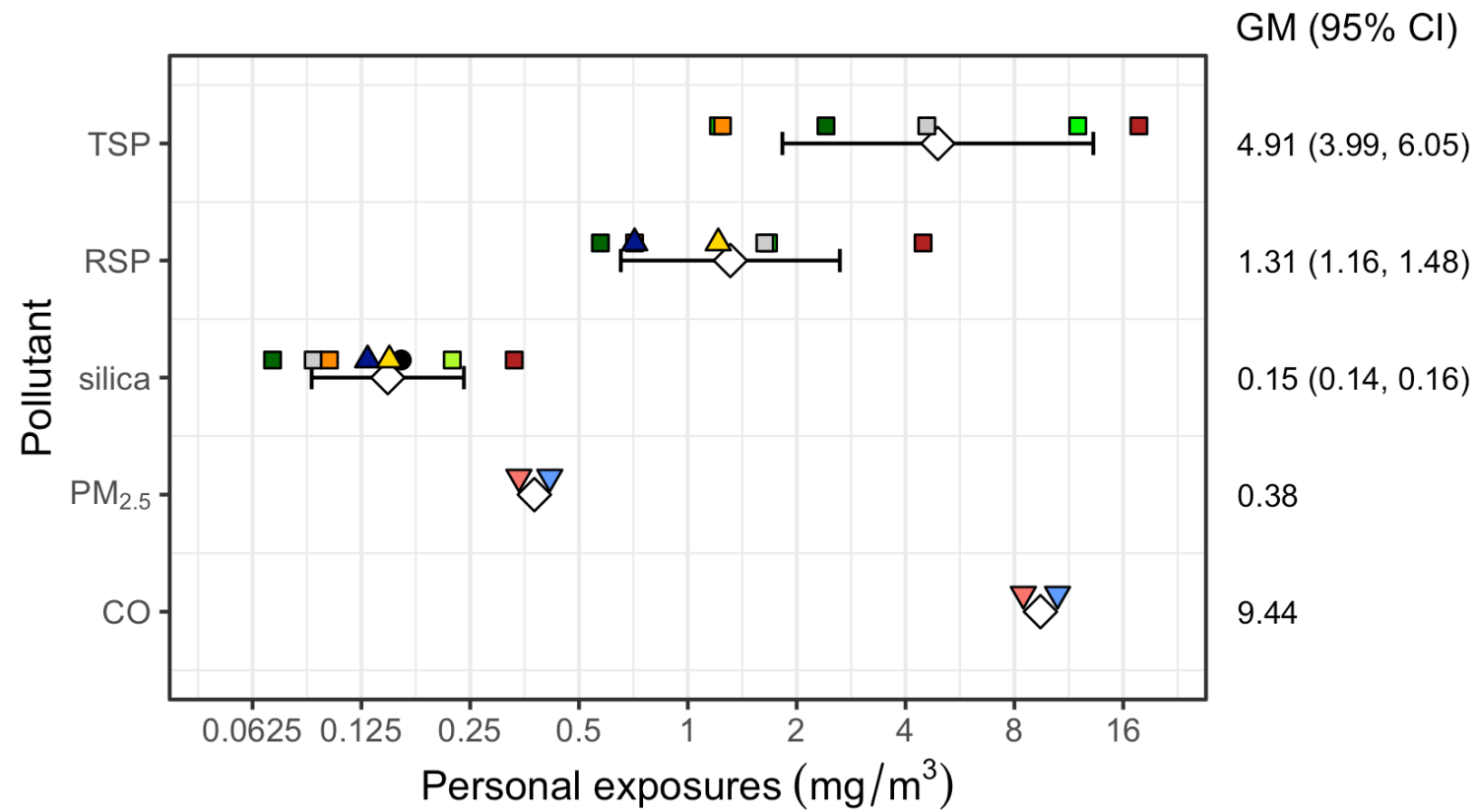
**Figure 2.**



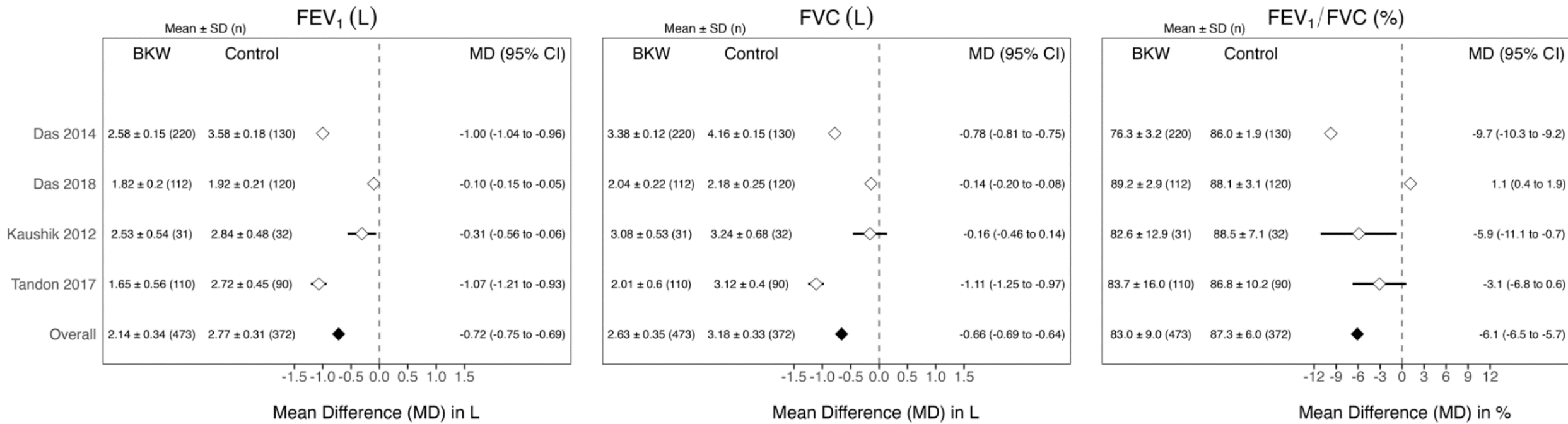
**Figure 3.**



**Figure 4.**



**Figure 5.**



**Figure 6.**