

1 **CD206 upregulation in monocytes within whole blood cultures correlates with**
2 **lung function in Cystic Fibrosis: a pilot study**

3

4 Sonali Singh^{1,3}, Jessica Longmate², David Onion¹, Paul Williams^{1,2,3}, Miguel Camara^{1,3,4},
5 Alan Smyth^{2,5}, Helen Barr² and Luisa Martinez-Pomares^{1,3*}

6

7

8 Author affiliation

9 1-School of Life Sciences, University of Nottingham, Medical School, Queen's Medical
10 Centre, Nottingham NG7 2UH, UK

11 2-Nottingham NIHR Biomedical Research Centre, Nottingham MRC Molecular Pathology
12 Node, Division of Respiratory Medicine, University of Nottingham, Nottingham University
13 Hospitals NHS Trust, Nottingham, UK.

14 3-National Biofilm Innovation Centre, Nottingham, UK

15 4-Biodiscovery Institute, University Park, Nottingham, NG7 2RD, UK

16 5- School of Medicine, University of Nottingham, Medical School, Nottingham, NG7 2UH,
17 UK

18

19 *Corresponding author: Luisa Martinez-Pomares (luisa.m@nottingham.ac.uk)

20

21

22

23

24

25 **Abstract**

26 Chronic inflammation dominates disease pathogenesis in Cystic Fibrosis (CF) and there is
27 a need to characterise CF immunity. Whole blood cultures offer a cost-effective and non-
28 invasive approach to investigate immune responses within the host environment. Here
29 we used whole blood cultures to investigate the differentiation potential of monocytes
30 (CD45+CD14+ cells) in CF (N=10) and controls (N=8) in the presence and absence of
31 exogenous macrophage-colony stimulatory factor (M-CSF) or granulocyte-macrophage
32 (GM)-CSF with and without interleukin (IL)-4. In CF and control cultures, CD45+CD14+
33 cells upregulated HLA-DR expression in all instances, and increased CD206 in the
34 presence of GM-CSF with and without IL-4, and CD209 in the presence of GM-CSF and
35 IL-4. In CF, we consistently observed reduced upregulation of CD206 in response to GM-
36 CSF and a positive correlation between CD206 expression and lung function (FEV₁). This
37 was unique to cultured monocytes, and not seen with any other marker. These results
38 highlight the potential of whole blood cultures to reveal cellular characteristics in
39 differentiating monocytes related to clinical parameters that could guide the
40 identification of novel biomarkers in CF.

41

42

43 **1. Introduction**

44 In Cystic Fibrosis (CF), chronic lung infection adversely affects life expectancy and
45 quality of life. Pulmonary colonisation with pathogens such as *Pseudomonas aeruginosa*,
46 negatively impacts lung function and can drive chronic neutrophilic inflammatory
47 responses, leading to lung damage [1]. A tendency towards Th2/Th17-dominated
48 immunity has described in CF [2]. There is a plethora of approaches to profiling human
49 immunity with sample availability and processing being major factors to consider. Serum
50 measurements can indicate clinical improvement in CF, for instance antibiotic treatment
51 after exacerbation led to a reduction in circulating white blood cells and serum C-reactive
52 protein, IL-6 and calprotectin [3]. Using stimulated peripheral blood mononuclear cells
53 (PBMCs) we previously demonstrated that in people with CF IFN- γ production in response
54 to phytohemagglutinin positively correlated with lung function (FEV₁), whereas IL-17A
55 production showed a negative correlation [4].

56 Monocytes are highly versatile and responsive immune cells that drive and respond to
57 inflammatory processes and their characterisation could signpost inflammatory status in
58 patients. Previous work identified changes in CF macrophages differentiated from
59 purified blood monocytes compared to controls [5]. In addition, CF monocyte function is
60 recovered in response to new therapeutic treatments [6, 7], which makes these cells
61 possible therapeutic targets or prognosis markers in CF. Accordingly, monocytes driving
62 neutrophilic inflammation in CF has recently been described [8].

63 In this study, we used whole blood cultures to identify potential differences in the
64 phenotype of CF and control monocytes as they mature exposed to the host
65 environment. This approach avoids potential artefacts caused by the cell purification
66 process, reduces the sample size required, and takes into consideration the influence of
67 plasma components and other blood cells. Whole blood cultures have been previously
68 used to define immune status in volunteers [9, 10], and to establish how immune cells
69 alter their phenotype under different culture conditions including treatment with SARS-
70 CoV2 spike protein [11].

71 We analysed monocyte differentiation in the absence or presence of macrophage (M)-
72 colony stimulating factor (CSF, CSF-1) or granulocyte-macrophage (GM)-CSF (CSF-2).
73 Both factors contribute to macrophage homeostasis, with M-CSF produced constitutively
74 and GM-CSF largely produced under inflammatory conditions [12]. GM-CSF also has an
75 important homeostatic role in mucosal sites such as the lung where it is essential for the
76 development of alveolar macrophages [13]. Although GM-CSF is widely considered to
77 drive monocytes towards a pro-inflammatory phenotype[12], recent work analysing
78 changes in gene expression and epigenetic modifications by Dabritz *et al.* indicate a

79 potential regulatory function for GM-CSF-monocytes in the context of intestinal
80 inflammation [14]. GM-CSF together with interleukin (IL)-4 was also included because of
81 its ability to induce a dendritic cell-like phenotype in monocytes (CD206+CD209+) and
82 confirm that IL-4 would be able to transduce a signal, if present [15, 16].

83 In this proof of principle study, we focused on cell activation markers (CD11b, HLA-DR)
84 [17] and two lectin immune receptors (CD206 and CD209) shown to bind *P. aeruginosa*
85 biofilms (CD206 and CD209) and planktonic cells (CD209) [16]. Our results show that
86 monocytes upregulated HLA-DR, CD206, and CD209 upon culture and that CD206
87 expression in blood cultures positively correlates with FEV₁, suggesting that monitoring
88 selected surface markers in differentiating monocytes could inform on immune responses
89 linked to lung pathophysiology in CF.

90

91 **2. Materials and Methods**

92 **Ethics**

93 This study was approved by the Health Research Authority, REC reference: 17/LO/117,
94 IRAS project ID: 190057. All participants' details are presented in Table 1. None of the
95 participants in the CF group were taking CFTR modulators.

96

97 **Reagents**

98 Details of reagents used are given in Supplementary Table 1.

99

100 **Antibody staining of fresh blood**

101 Whole blood was collected in citrate vacutainers. Samples (100 µl each) were incubated
102 with relevant antibodies as per the manufacturer's instructions for 15 min as follows: i.
103 No antibodies (Unstained); ii. Isotype controls for CD45 and CD14; iii. Anti-CD45 and
104 CD14 antibodies + isotype controls for HLA-DR, CD11b, CD206, and CD209; and iv.
105 Anti-CD45, CD14, HLA-DR, CD11b, CD206, and CD209 antibodies (Supplementary Table
106 2). Samples were treated with OptiLyse C and processed as per the manufacturer's
107 instructions, resuspended in 0.1% paraformaldehyde in PBS, and stored at 4°C until
108 analysis.

109

110 **Whole blood cultures**

111 Blood was gently mixed and diluted 1:1 with warm RPMI complete medium (RPMI-1640
112 medium containing 15% human AB serum, 2 mM GlutaMAX, and 10 mM HEPES). The
113 blood-medium mixture was cultured in 24-well ultra-low attachment plates (400 µl per
114 well). Samples were either left untreated or treated with M-CSF (50 ng/ml), GM-CSF (20

115 ng/ml), or GM-SCF plus IL-4 (20 ng/ml each). For each donor, all four conditions were
116 performed in duplicate. Cultures were incubated at 37°C, 5% CO₂ for 24 h. Samples
117 were labelled and processed for flow cytometry as for fresh blood.

118

119 **Flow analysis and data analysis**

120 All samples were analysed on a MoFlo Astrios EQ flow cytometer within 24 h. The
121 lymphocyte gate based on Forward and Size Scatter characteristics, was used to
122 normalise for number of events (100,000 per fresh blood sample, 50,000 per 24 h
123 cultured sample). Raw data were processed using Kaluza and further analysed using
124 GraphPad Prism. Results are reported as the percentage of cells positive for each
125 marker, as well as the relative median fluorescence intensity (rMFI) of the marker
126 (rMFI=MFI of positive cells in stained sample/MFI of all cells in isotype control sample).
127 Statistical tests are detailed in main text and figure legends, p<0.05 was considered
128 significant.

129

130 **3. Results**

131

132 **Changes in monocyte phenotype within whole blood cultures**

133 To establish the phenotype of circulating and cultured monocytes in CF and controls, we
134 labelled fresh and 24 h cultured whole blood samples untreated or treated with M-CSF,
135 GM-CSF, or GM-CSF+IL-4 for CD45 to identify haematopoietic cells and CD14 to identify
136 monocytes, alongside CD11b, HLA-DR, CD206, and CD209 (see gating strategy in
137 supplementary Figure 1).

138 CD45+CD14+ cells expressed CD11b and HLA-DR under all conditions (Figure 1). Mean
139 percentage of CD11b+ cells in fresh blood samples was 97% for CF and 87% for HC,
140 with this variation reaching statistical significance and indicating differences in circulating
141 monocytes between CF and control individuals. There were minor changes in the
142 percentages of cells expressing CD11b in CF and HC samples upon culture but no
143 differences between both groups were detected. Percentage of HLA-DR+ cells was high
144 under all conditions (>70% for CF and controls) with a significant upregulation and
145 reduced variance upon culture, regardless of the presence of cytokines. CD206 was
146 detected in very low percentage of cells in fresh, and untreated and M-CSF-treated
147 cultures (6.32-9.42% for CF and 2.44-7.87% for HC) but was detected in approximately
148 40% of cells in the presence of GM-CSF (37.58% for CF and 42.16% for HC) and 90% in
149 the presence of GM-CSF+IL-4 (92.68% for CF and 90.96% for HC). CD209 was detected
150 in 80% of CD45+CD14+ cells in GM-CSF+IL-4 cultures (79.12 % for CF and 80.1% for
151 HC) with very low percentages of CD209+ cells detected in fresh, and untreated, M-CSF-

152 and GM-CSF-treated cultures (3.54-5.90% for CF and 2.64-7.32% for HC). We did not
153 observe any differences in the percentages of cells expressing HLA-DR, CD206, or CD209
154 between CF and HC samples under any conditions.

155

156 **CD206 upregulation differs in CF monocytes and correlates with lung function**

157 Analysis of rMFI for CD11b, HLA-DR, CD206, and CD209 in CD45+CD14+ cells (Figure
158 2) revealed that CD11b rMFI was comparable in fresh and cultured blood, although there
159 was a trend towards increased expression in CF compared with HC samples under all
160 conditions. HLA-DR rMFI values increased in response to GM-CSF+IL-4 and we observed
161 no differences between CF and HC samples. CD206 rMFI was significantly upregulated by
162 GM-CSF+IL-4 in CD45+CD14+ cells in CF and control cultures but only significantly
163 upregulated by GM-CSF in control cultures. Further analysis of this finding using multiple
164 unpaired T tests or Mann-Whitney tests correcting for multiple comparisons (Holm-Sidak
165 method), showed that differences in GM-CSF samples between CF and controls were
166 statistically significant [adjusted p value 0.0136 (T test) and 0.0068 (Mann-Whitney
167 test)]. CD209 was significantly upregulated by GM-CSF+IL-4 in CF samples but not in
168 controls. This is possibly due to the three high responders in the CF cohort.

169 To establish the potential clinical relevance of these findings we explored correlations
170 between marker expression (as percentages of expressing cells and rMFI) and lung
171 function. We observed a positive correlation between CD206 rMFI in CD45+CD14+ cells
172 within whole blood cultures exposed to M-CSF, GM-CSF, or GM-CSF+IL-4 with lung
173 function (FEV₁) in CF donors (Figure 3). We found no such correlations for CD11b, HLA-
174 DR, or CD209 (data not shown).

175

176 **4. Discussion**

177 The aim of this proof of principle study was to establish the possibility of detecting
178 differences in the phenotype of differentiating monocytes within the host environment
179 between people with CF and controls. Within this experimental set up (whole blood
180 cultures), monocytes are influenced by the mutations in CFTR ($\Delta F508$ in this instance),
181 alongside environmental factors including other circulating cells that can also respond to
182 GM-CSF and/or IL-4, and circulating microbial products including endotoxin and quorum
183 sensing molecules [18-21]. We stimulated the cultures with factors that promote
184 homeostatic (M-CSF) and inflammatory and mucosal (GM-CSF) monocyte differentiation.
185 There is extensive literature of how both cytokines affect monocytes and macrophages
186 including upregulation of CD206 by GM-CSF in purified monocytes [22] and PBMC
187 cultures [23]. Addition of GM-CSF was not an attempt to mimic inflammatory conditions
188 in CF, indeed circulating levels of GM-CSF are low in CF [24, 25]. The aim was to

189 compare how monocytes would behave in M-CSF-dominated vs. GM-CSF-dominated
190 environments.

191 Circulating CF and control monocytes were CD206-, CD209-, CD11b+, and HLA-DR+.
192 We noted a significant trend for higher percentage of CD11b+ monocytes in fresh blood
193 samples from CF compared to control donors. CD11b forms the α chain of the integrin
194 CD11b/CD18, which plays a critical role in leukocyte adhesion and transmigration
195 amongst other functions [26]. Elevated CD11b levels in CF may be caused by the
196 inflammatory environment [27]. HLA-DR was upregulated upon culture, particularly in
197 presence of GM-CSF+IL-4, a combination widely used to generate monocyte-derived
198 dendritic cells with high T cell activating capacity [15], but no differences were observed
199 in HLA-DR expression between CF and HC samples.

200 CF has been characterised as a Th2/Th17 -dominated inflammatory disease [2]. Results
201 from untreated and M-CSF-treated whole blood cultures indicate that the environment
202 did not provide enough signals for induction of CD206 and CD209 expression after 24 h
203 culture. CD206 and CD209 are both upregulated by IL-4 in human macrophages [28,
204 29]. The GM-CSF+IL-4 condition indicates that CF and HC monocytes were capable of
205 upregulating CD206 and CD209 when suitably activated.

206 CD206 was upregulated only in 40% of monocytes by GM-CSF in 24 h cultures (both CF
207 and HC). It is possible that this percentage would increase if cultures were maintained
208 for longer. Intriguingly, in HC cultures, GM-CSF induced a significant increase in CD206
209 rMFI in monocytes compared to fresh, and untreated and M-CSF-treated cultures. This
210 was not the case in CF despite both CF and HC cultures supporting similar CD206 rMFI
211 upregulation in response to GM-CSF+IL-4. We speculate that CF monocytes might be
212 less responsive to GM-CSF. Since GM-CSF is likely found at higher concentrations in the
213 lung, recruited lung monocytes could display less CD206 in CF. This would agree with the
214 reduced CD206 expression observed in a population of small CD14⁺, HLA-DR⁺, CD68^{weak}
215 sputum macrophages expanded in CF compared to controls, which could correspond to
216 recruited inflammatory monocytes [30]. These cells would represent a different
217 population to alveolar macrophages shown to express high levels of CD206 [31]. Lung
218 macrophages are of monocytic origin and upregulate CD206 upon differentiation [32].
219 Murphy *et al.* [33] observed a negative correlation between percentage of CD206+ cells
220 within CD11b+ cells (used as marker of infiltrating monocytes) in sputum and
221 bronchoalveolar lavage of CF patients regardless of *P. aeruginosa* infection status, with
222 *P. aeruginosa* infection being associated with increased percentage of CD206+ cells. Our
223 results showing significant positive correlations between lung function and CD206 rMFI in
224 M-CSF, GM-CSF, and GM-CSF+IL-4-treated monocytes in CF complement these findings.
225 Both support the notion that physiological conditions in CF influence CD206 expression.

226 Understanding the relationship between CD206 and clinical status in CF may provide new
227 biomarkers and/or therapeutic interventions, and as such, deserves further
228 investigation.

229 Lower CD206 upregulation in response to GM-CSF in CF monocytes could be caused by
230 (i) reduced transcription because of substantial levels of endotoxin in CF plasma [20] or
231 reduced cellular responses to GM-CSF in CF, or (ii) increased release of soluble CD206
232 (sCD206) which is enhanced in response different stimuli [34]. Reduced responsiveness
233 to GM-CSF in CF might have implications for wound healing at mucosal sites [14]. CD206
234 can be released from cells as soluble form: sCD206 [35, 36]. Raised levels of sCD206
235 are found in inflammatory conditions [37], and sCD206 is of prognostic value in
236 pulmonary tuberculosis [38] and community-acquired pneumonia [39]. Analysis of
237 sCD206 in CF would clarify this point.

238 This pilot study has clear limitations such as the reduced number of samples and
239 markers analysed, lack of longitudinal samples, and no quantification of serum
240 biomarkers like levels of LPS or cytokines. Nevertheless, our results clearly pave the way
241 for the exploitation of whole blood cultures to analyse monocyte differentiation in CF and
242 other inflammatory diseases and assess effect of therapeutics such as CFTR-modulators
243 on immune cells. These studies will benefit from increasing the range of parameters
244 analysed informed by high-dimensional phenotyping, [3, 40, 41] that could be linked to
245 serum biomarkers and sputum analysis.

246

247

248 **Figure legends**

249 **Figure 1. Analysis of percentages of CD45+CD14+ cells expressing CD11b, HLA-**
250 **DR, CD206, and CD209 in CF and control fresh and cultured blood samples.**

251 Whole peripheral blood from CF and healthy control (HC) donors was either directly
252 labelled and processed for flow cytometry or diluted 1:1 with complete RPMI medium
253 and incubated for 24 h in the presence of M-CSF, GM-CSF, GM-CSF+IL-4, or no
254 cytokines (Untreated, Unt), and then labelled and processed for flow cytometry. Both
255 sets of samples were stained for CD45, CD14, CD11b, HLA-DR, CD206, and CD209. **A.**
256 Representative histograms showing the expression of CD11b, HLA-DR, CD206, and
257 CD209 on monocytes in fresh and cultured blood. Red lines represent the marker, while
258 grey lines represent the corresponding isotype control. **B.** Monocytes from both donor
259 groups consistently expressed CD11b and HLA-DR under all conditions with a higher
260 percentage of CD11b+ cells observed in CF fresh blood compared to HC. Percentage of
261 HLA-DR+ cells consistently significantly increased upon culture. The percentage of
262 CD206+ cells was significantly increased in the presence of GM-CSF and GM-CSF+IL-4,
263 while the percentage of CD209+ cells increased only in the presence of GM-CSF and IL-
264 4. Graphs show mean \pm standard error of mean (SEM) for n=10 CF donors and n=8
265 control donors. Data analysed using Two-Way ANOVA and Tukey's multiple comparison
266 test. (*) p<0.05; (**) p<0.01; (***) p< 0.0001; (****) p<0.0001.

267

268 **Figure 2. Analysis of CD11b, HLA-DR, CD206, and CD209 rMFI in CD45+CD14+**
269 **cells in CF and control fresh and cultured blood samples.**

270 Whole peripheral blood from CF and healthy control (HC) donors was either directly
271 labelled and processed for flow cytometry or diluted 1:1 with complete RPMI medium
272 and incubated for 24 h in the presence of M-CSF, GM-CSF, GM-CSF+IL-4, or no
273 cytokines (Untreated, Unt), and then labelled and processed for flow cytometry. Both
274 sets of samples were stained for CD45, CD14, CD11b, HLA-DR, CD206, and CD209.
275 CD11b rMFI values were highly heterogeneous and no clear trend was observed
276 regarding sample origin or treatment. HLA-DR rMFI displayed a clear trend towards
277 upregulation upon culture, with this trend becoming statistically significant in GM-
278 CSF+IL-4 samples. CD206 rMFI was significantly upregulated in CF and HC cultures in
279 the presence of GM-CSF+IL-4. Upregulation in response to GM-CSF only reached
280 significance in HC cultures. CD209 rMFI was only increased in GM-CSF+IL-4 cultures
281 with this upregulation only reaching significance for CF samples. Data analysed using
282 Two-Way ANOVA and Tukey's multiple comparison test. (*) p<0.05; (**) p<0.01; (***)
283 p< 0.0001; (****) p<0.0001.

284 **Figure 3. CD206 rMFI in CD45+CD14+ cells within 24 h whole blood cultures**
285 **positively correlate with lung function in CF.**

286 Whole peripheral blood from CF donors was either directly labelled and processed for
287 flow cytometry or diluted 1:1 with complete RPMI medium and incubated for 24 h in the
288 presence of M-CSF, GM-CSF, GM-CSF+IL-4, or no cytokines (Untreated), and then
289 labelled and processed for flow cytometry. All samples were stained for CD45, CD14,
290 CD11b, HLA-DR, CD206 and CD209. N=10. Graphs show Pearson correlation analysis
291 between lung function (FEV₁) of CF donors and CD206 rMFI in CD45+CD14+ cells in
292 fresh blood **(A)** and after 24 h culture **(B)**. Note differences in the scale of the Y axis for
293 each condition.

294

295 **Acknowledgements**

296 This study was funded by UKRI-MRC grant [Award number MR/P001033/1] to Luisa
297 Martinez-Pomares, Miguel Camara and Paul Williams, and the National Biofilms
298 Innovation Centre (NBIC) which is an Innovation and Knowledge Centre funded by the
299 Biotechnology and Biological Sciences Research Council, Innovate UK and Hartree Centre
300 [Awards Numbers BB/R012415/1 to MC, LMP and PW and BB/X002950/1 to MC].

301 **Conflict of Interest Statement**

302 The authors declare no conflict of interest.

303 **References**

- 304 1. Marteyn BS, Burgel PR, Meijer L, Witko-Sarsat V. Harnessing Neutrophil Survival Mechanisms
305 during Chronic Infection by *Pseudomonas aeruginosa*: Novel Therapeutic Targets to Dampen
306 Inflammation in Cystic Fibrosis. *Front Cell Infect Microbiol.* 2017;7:243. Epub 2017/07/18. doi:
307 10.3389/fcimb.2017.00243. PubMed PMID: 28713772; PubMed Central PMCID: PMC5492487.
- 308 2. Tiringier K, Treis A, Fucik P, Gona M, Gruber S, Renner S, et al. A Th17- and Th2-skewed
309 cytokine profile in cystic fibrosis lungs represents a potential risk factor for *Pseudomonas aeruginosa*
310 infection. *Am J Respir Crit Care Med.* 2013;187(6):621-9. Epub 2013/01/12. doi:
311 10.1164/rccm.201206-1150OC. PubMed PMID: 23306544.
- 312 3. Horsley AR, Davies JC, Gray RD, Macleod KA, Donovan J, Aziz ZA, et al. Changes in
313 physiological, functional and structural markers of cystic fibrosis lung disease with treatment of a
314 pulmonary exacerbation. *Thorax.* 2013;68(6):532-9. Epub 2013/02/12. doi: 10.1136/thoraxjnl-2012-
315 202538. PubMed PMID: 23396354.
- 316 4. Singh S, Barr H, Liu YC, Robins A, Heeb S, Williams P, et al. Granulocyte-macrophage colony
317 stimulatory factor enhances the pro-inflammatory response of interferon-gamma-treated
318 macrophages to *Pseudomonas aeruginosa* infection. *PLoS One.* 2015;10(2):e0117447. Epub
319 2015/02/24. doi: 10.1371/journal.pone.0117447. PubMed PMID: 25706389; PubMed Central
320 PMCID: PMC4338139.
- 321 5. Tarique AA, Sly PD, Holt PG, Bosco A, Ware RS, Logan J, et al. CFTR-dependent defect in
322 alternatively-activated macrophages in cystic fibrosis. *J Cyst Fibros.* 2017;16(4):475-82. Epub
323 2017/04/22. doi: 10.1016/j.jcf.2017.03.011. PubMed PMID: 28428011.
- 324 6. Cavinato L, Luly FR, Pastore V, Chiappetta D, Sangiorgi G, Ferrara E, et al.
325 Elexacaftor/tezacaftor/ivacaftor corrects monocyte microbicidal deficiency in cystic fibrosis. *Eur*
326 *Respir J.* 2023;61(4). Epub 2022/12/02. doi: 10.1183/13993003.00725-2022. PubMed PMID:
327 36455959; PubMed Central PMCID: PMC666567.
- 328 7. Gabillard-Lefort C, Casey M, Glasgow AMA, Boland F, Kerr O, Marron E, et al. Trikafta
329 Rescues CFTR and Lowers Monocyte P2X7R-induced Inflammasome Activation in Cystic Fibrosis. *Am*
330 *J Respir Crit Care Med.* 2022;205(7):783-94. Epub 2022/01/13. doi: 10.1164/rccm.202106-1426OC.
331 PubMed PMID: 35021019.
- 332 8. Oz HH, Cheng EC, Di Pietro C, Tebaldi T, Biancon G, Zeiss C, et al. Recruited
333 monocytes/macrophages drive pulmonary neutrophilic inflammation and irreversible lung tissue
334 remodeling in cystic fibrosis. *Cell Rep.* 2022;41(11):111797. Epub 2022/12/15. doi:
335 10.1016/j.celrep.2022.111797. PubMed PMID: 36516754; PubMed Central PMCID:
336 PMC666567.
- 337 9. Damsgaard CT, Lauritzen L, Calder PC, Kjaer TM, Frokiaer H. Whole-blood culture is a valid
338 low-cost method to measure monocytic cytokines - a comparison of cytokine production in cultures
339 of human whole-blood, mononuclear cells and monocytes. *J Immunol Methods.* 2009;340(2):95-101.
340 Epub 2008/11/13. doi: 10.1016/j.jim.2008.10.005. PubMed PMID: 19000693.
- 341 10. Duffy D, Rouilly V, Libri V, Hasan M, Beitz B, David M, et al. Functional analysis via
342 standardized whole-blood stimulation systems defines the boundaries of a healthy immune
343 response to complex stimuli. *Immunity.* 2014;40(3):436-50. Epub 2014/03/25. doi:
344 10.1016/j.immuni.2014.03.002. PubMed PMID: 24656047.
- 345 11. Ait-Belkacem I, Cartagena Garcia C, Millet-Wallisky E, Izquierdo N, Loosveld M, Arnoux I, et
346 al. SARS-CoV-2 spike protein induces a differential monocyte activation that may contribute to age
347 bias in COVID-19 severity. *Sci Rep.* 2022;12(1):20824. Epub 2022/12/03. doi: 10.1038/s41598-022-
348 25259-2. PubMed PMID: 36460710; PubMed Central PMCID: PMC9716544 employees. All other
349 authors declare no competing interests.
- 350 12. Hamilton JA. Colony-stimulating factors in inflammation and autoimmunity. *Nat Rev*
351 *Immunol.* 2008;8(7):533-44. Epub 2008/06/14. doi: 10.1038/nri2356. PubMed PMID: 18551128.
- 352 13. Gschwend J, Sherman SPM, Ridder F, Feng X, Liang HE, Locksley RM, et al. Alveolar
353 macrophages rely on GM-CSF from alveolar epithelial type 2 cells before and after birth. *J Exp Med.*

- 354 2021;218(10). Epub 2021/08/26. doi: 10.1084/jem.20210745. PubMed PMID: 34431978; PubMed
355 Central PMCID: PMCPMC8404471.
- 356 14. Dabritz J, Weinhage T, Varga G, Wirth T, Walscheid K, Brockhausen A, et al. Reprogramming
357 of monocytes by GM-CSF contributes to regulatory immune functions during intestinal
358 inflammation. *J Immunol.* 2015;194(5):2424-38. Epub 2015/02/06. doi: 10.4049/jimmunol.1401482.
359 PubMed PMID: 25653427.
- 360 15. Sallusto F, Lanzavecchia A. Efficient presentation of soluble antigen by cultured human
361 dendritic cells is maintained by granulocyte/macrophage colony-stimulating factor plus interleukin 4
362 and downregulated by tumor necrosis factor alpha. *J Exp Med.* 1994;179(4):1109-18. Epub
363 1994/04/01. doi: 10.1084/jem.179.4.1109. PubMed PMID: 8145033; PubMed Central PMCID:
364 PMCPMC2191432.
- 365 16. Singh S, Almuhan Y, Alshahrani MY, Lowman DW, Rice PJ, Gell C, et al. Carbohydrates from
366 *Pseudomonas aeruginosa* biofilms interact with immune C-type lectins and interfere with their
367 receptor function. *NPJ Biofilms Microbiomes.* 2021;7(1):87. Epub 2021/12/10. doi: 10.1038/s41522-
368 021-00257-w. PubMed PMID: 34880222; PubMed Central PMCID: PMCPMC8655052.
- 369 17. Kapellos TS, Bonaguro L, Gemund I, Reusch N, Saglam A, Hinkley ER, et al. Human Monocyte
370 Subsets and Phenotypes in Major Chronic Inflammatory Diseases. *Front Immunol.* 2019;10:2035.
371 Epub 2019/09/24. doi: 10.3389/fimmu.2019.02035. PubMed PMID: 31543877; PubMed Central
372 PMCID: PMCPMC6728754.
- 373 18. Barr HL, Halliday N, Barrett DA, Williams P, Forrester DL, Peckham D, et al. Diagnostic and
374 prognostic significance of systemic alkyl quinolones for *P. aeruginosa* in cystic fibrosis: A longitudinal
375 study. *J Cyst Fibros.* 2017;16(2):230-8. Epub 2016/10/25. doi: 10.1016/j.jcf.2016.10.005. PubMed
376 PMID: 27773591; PubMed Central PMCID: PMCPMC5345566.
- 377 19. Barr HL, Halliday N, Camara M, Barrett DA, Williams P, Forrester DL, et al. *Pseudomonas*
378 *aeruginosa* quorum sensing molecules correlate with clinical status in cystic fibrosis. *Eur Respir J.*
379 2015;46(4):1046-54. Epub 2015/05/30. doi: 10.1183/09031936.00225214. PubMed PMID:
380 26022946; PubMed Central PMCID: PMCPMC4589431 this article at erj.ersjournals.com.
- 381 20. del Campo R, Martinez E, del Fresno C, Alenda R, Gomez-Pina V, Fernandez-Ruiz I, et al.
382 Translocated LPS might cause endotoxin tolerance in circulating monocytes of cystic fibrosis
383 patients. *PLoS One.* 2011;6(12):e29577. Epub 2012/01/05. doi: 10.1371/journal.pone.0029577.
384 PubMed PMID: 22216320; PubMed Central PMCID: PMCPMC3247277.
- 385 21. Zain NMM, Webb K, Stewart I, Halliday N, Barrett DA, Nash EF, et al. 2-Alkyl-4-quinolone
386 quorum sensing molecules are biomarkers for culture-independent *Pseudomonas aeruginosa*
387 burden in adults with cystic fibrosis. *J Med Microbiol.* 2021;70(10). Epub 2021/10/02. doi:
388 10.1099/jmm.0.001420. PubMed PMID: 34596013; PubMed Central PMCID: PMCPMC8604169.
- 389 22. Rodriguez RM, Suarez-Alvarez B, Lavin JL, Ascension AM, Gonzalez M, Lozano JJ, et al. Signal
390 Integration and Transcriptional Regulation of the Inflammatory Response Mediated by the GM-/M-
391 CSF Signaling Axis in Human Monocytes. *Cell Rep.* 2019;29(4):860-72 e5. Epub 2019/10/24. doi:
392 10.1016/j.celrep.2019.09.035. PubMed PMID: 31644909.
- 393 23. Tan-Garcia A, Lai F, Sheng Yeong JP, Irac SE, Ng PY, Msallam R, et al. Liver fibrosis and
394 CD206(+) macrophage accumulation are suppressed by anti-GM-CSF therapy. *JHEP Rep.*
395 2020;2(1):100062. Epub 2020/02/11. doi: 10.1016/j.jhepr.2019.11.006. PubMed PMID: 32039403;
396 PubMed Central PMCID: PMCPMC7005658.
- 397 24. Castellani S, D'Oria S, Diana A, Polizzi AM, Di Gioia S, Mariggio MA, et al. G-CSF and GM-CSF
398 Modify Neutrophil Functions at Concentrations found in Cystic Fibrosis. *Sci Rep.* 2019;9(1):12937.
399 Epub 2019/09/12. doi: 10.1038/s41598-019-49419-z. PubMed PMID: 31506515; PubMed Central
400 PMCID: PMCPMC6736848.
- 401 25. Moser C, Jensen PO, Pressler T, Frederiksen B, Lanng S, Kharazmi A, et al. Serum
402 concentrations of GM-CSF and G-CSF correlate with the Th1/Th2 cytokine response in cystic fibrosis
403 patients with chronic *Pseudomonas aeruginosa* lung infection. *APMIS.* 2005;113(6):400-9. Epub
404 2005/07/06. doi: 10.1111/j.1600-0463.2005.apm_142.x. PubMed PMID: 15996157.

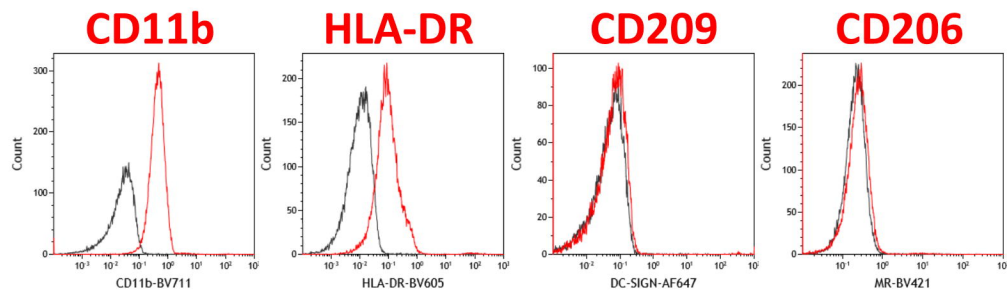
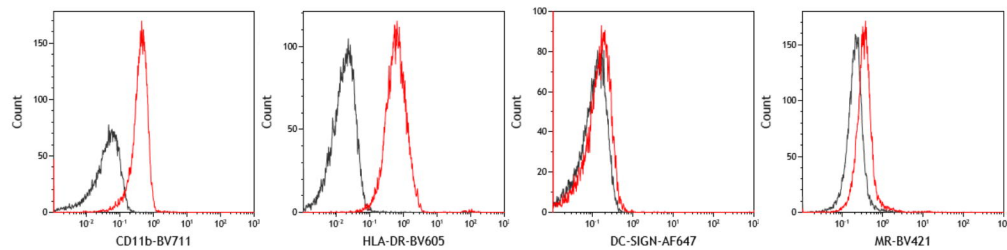
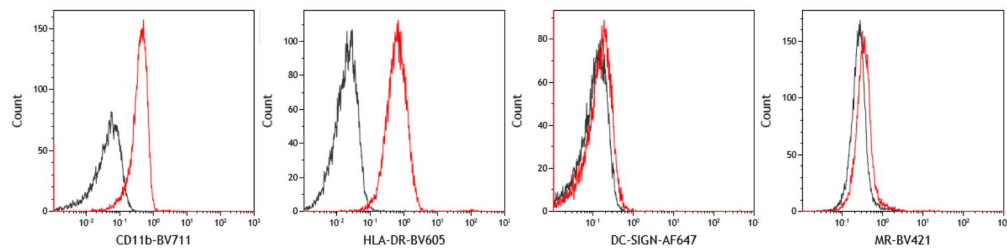
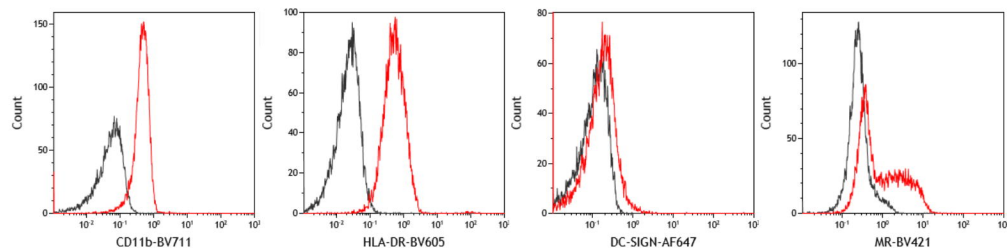
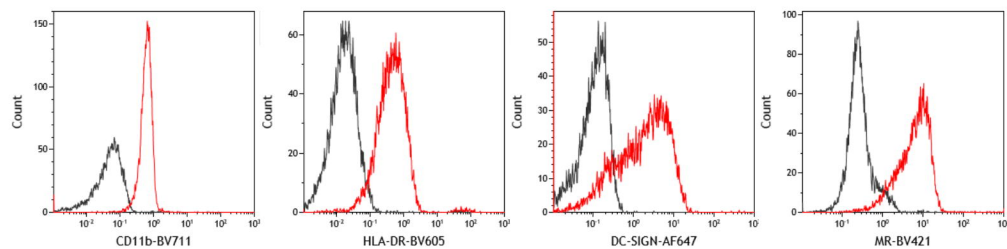
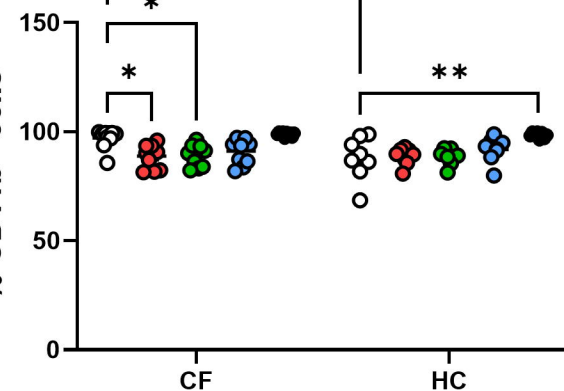
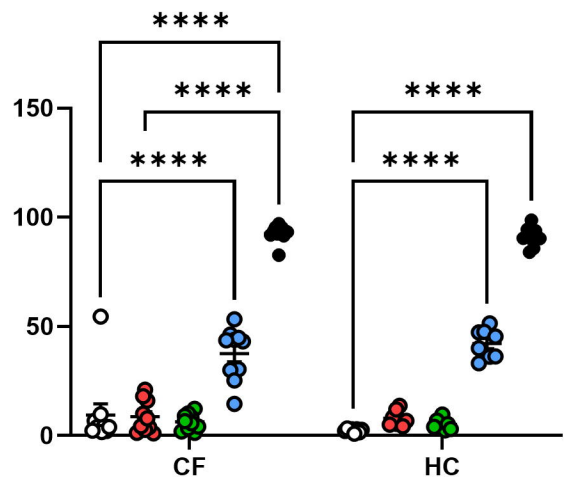
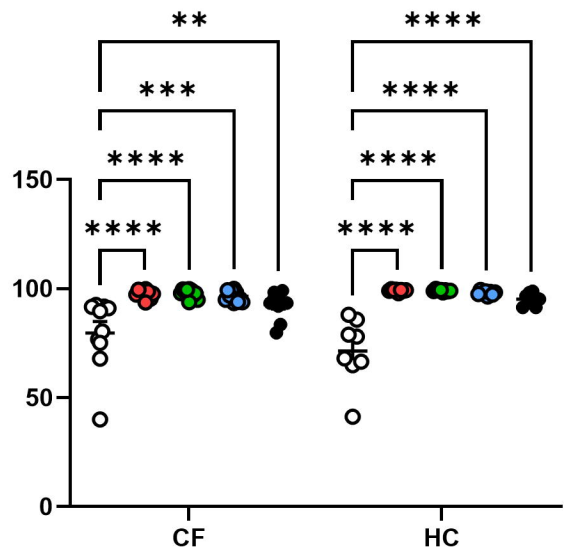
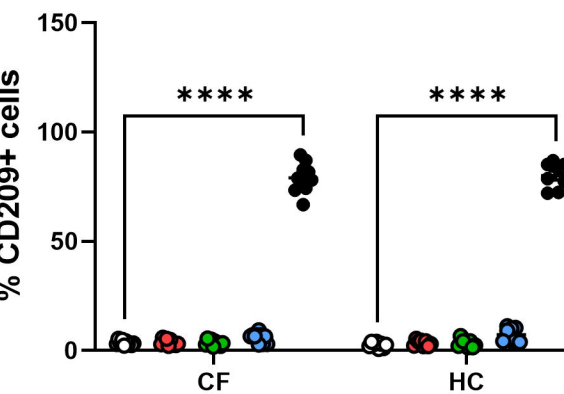
- 405 26. Villanueva V, Li X, Jimenez V, Faridi HM, Gupta V. CD11b agonists offer a novel approach for
406 treating lupus nephritis. *Transl Res.* 2022;245:41-54. Epub 2022/03/16. doi:
407 10.1016/j.trsl.2022.03.001. PubMed PMID: 35288363; PubMed Central PMCID: PMCPMC9167730.
- 408 27. Dadfar E, Jacobson SH, Lundahl J. Newly recruited human monocytes have a preserved
409 responsiveness towards bacterial peptides in terms of CD11b up-regulation and intracellular
410 hydrogen peroxide production. *Clin Exp Immunol.* 2007;148(3):573-82. Epub 2007/03/28. doi:
411 10.1111/j.1365-2249.2007.03373.x. PubMed PMID: 17386075; PubMed Central PMCID:
412 PMCPMC1941923.
- 413 28. Jayme TS, Leung G, Wang A, Workentine ML, Rajeev S, Shute A, et al. Human interleukin-4-
414 treated regulatory macrophages promote epithelial wound healing and reduce colitis in a mouse
415 model. *Sci Adv.* 2020;6(23):eaba4376. Epub 2020/06/18. doi: 10.1126/sciadv.aba4376. PubMed
416 PMID: 32548267; PubMed Central PMCID: PMCPMC7274799.
- 417 29. Lugo-Villarino G, Troegeler A, Balboa L, Lastrucci C, Duval C, Mercier I, et al. The C-Type
418 Lectin Receptor DC-SIGN Has an Anti-Inflammatory Role in Human M(IL-4) Macrophages in Response
419 to Mycobacterium tuberculosis. *Front Immunol.* 2018;9:1123. Epub 2018/06/28. doi:
420 10.3389/fimmu.2018.01123. PubMed PMID: 29946317; PubMed Central PMCID: PMCPMC6006465.
- 421 30. Wright AK, Rao S, Range S, Eder C, Hofer TP, Frankenberger M, et al. Pivotal Advance:
422 Expansion of small sputum macrophages in CF: failure to express MARCO and mannose receptors. *J*
423 *Leukoc Biol.* 2009;86(3):479-89. Epub 2009/05/01. doi: 10.1189/jlb.1108699. PubMed PMID:
424 19403625.
- 425 31. Desch AN, Gibbings SL, Goyal R, Kolde R, Bednarek J, Bruno T, et al. Flow Cytometric Analysis
426 of Mononuclear Phagocytes in Nondiseased Human Lung and Lung-Draining Lymph Nodes. *Am J*
427 *Respir Crit Care Med.* 2016;193(6):614-26. Epub 2015/11/10. doi: 10.1164/rccm.201507-1376OC.
428 PubMed PMID: 26551758; PubMed Central PMCID: PMCPMC4824940.
- 429 32. Evren E, Ringqvist E, Tripathi KP, Sleiers N, Rives IC, Alisjahbana A, et al. Distinct
430 developmental pathways from blood monocytes generate human lung macrophage diversity.
431 *Immunity.* 2021;54(2):259-75 e7. Epub 2021/01/01. doi: 10.1016/j.immuni.2020.12.003. PubMed
432 PMID: 33382972.
- 433 33. Murphy BS, Bush HM, Sundareshan V, Davis C, Hagadone J, Cory TJ, et al. Characterization of
434 macrophage activation states in patients with cystic fibrosis. *J Cyst Fibros.* 2010;9(5):314-22. Epub
435 2010/06/24. doi: 10.1016/j.jcf.2010.04.006. PubMed PMID: 20570573.
- 436 34. Nielsen MC, Andersen MN, Rittig N, Rodgaard-Hansen S, Gronbaek H, Moestrup SK, et al.
437 The macrophage-related biomarkers sCD163 and sCD206 are released by different shedding
438 mechanisms. *J Leukoc Biol.* 2019;106(5):1129-38. Epub 2019/06/27. doi: 10.1002/JLB.3A1218-500R.
439 PubMed PMID: 31242338.
- 440 35. Jordens R, Thompson A, Amons R, Koning F. Human dendritic cells shed a functional, soluble
441 form of the mannose receptor. *Int Immunol.* 1999;11(11):1775-80. Epub 1999/11/05. doi:
442 10.1093/intimm/11.11.1775. PubMed PMID: 10545481.
- 443 36. Martinez-Pomares L, Mahoney JA, Kaposzta R, Linehan SA, Stahl PD, Gordon S. A functional
444 soluble form of the murine mannose receptor is produced by macrophages in vitro and is present in
445 mouse serum. *J Biol Chem.* 1998;273(36):23376-80. Epub 1998/08/29. doi:
446 10.1074/jbc.273.36.23376. PubMed PMID: 9722572.
- 447 37. De Vlieger G, Vanhorebeek I, Wouters PJ, Derese I, Casaer MP, Debaveye Y, et al. The soluble
448 mannose receptor (sMR/sCD206) in critically ill patients with invasive fungal infections, bacterial
449 infections or non-infectious inflammation: a secondary analysis of the EPaNIC RCT. *Crit Care.*
450 2019;23(1):270. Epub 2019/08/04. doi: 10.1186/s13054-019-2549-8. PubMed PMID: 31375142;
451 PubMed Central PMCID: PMCPMC6679534.
- 452 38. Suzuki Y, Shirai M, Asada K, Yasui H, Karayama M, Hozumi H, et al. Macrophage mannose
453 receptor, CD206, predict prognosis in patients with pulmonary tuberculosis. *Sci Rep.*
454 2018;8(1):13129. Epub 2018/09/05. doi: 10.1038/s41598-018-31565-5. PubMed PMID: 30177769;
455 PubMed Central PMCID: PMCPMC6120933.

- 456 39. Tsuchiya K, Suzuki Y, Yoshimura K, Yasui H, Karayama M, Hozumi H, et al. Macrophage
457 Mannose Receptor CD206 Predicts Prognosis in Community-acquired Pneumonia. *Sci Rep.*
458 2019;9(1):18750. Epub 2019/12/12. doi: 10.1038/s41598-019-55289-2. PubMed PMID: 31822747;
459 PubMed Central PMCID: PMC6904766.
- 460 40. Sander J, Schmidt SV, Cirovic B, McGovern N, Papantonopoulou O, Hardt AL, et al. Cellular
461 Differentiation of Human Monocytes Is Regulated by Time-Dependent Interleukin-4 Signaling and
462 the Transcriptional Regulator NCOR2. *Immunity.* 2017;47(6):1051-66 e12. Epub 2017/12/21. doi:
463 10.1016/j.immuni.2017.11.024. PubMed PMID: 29262348; PubMed Central PMCID:
464 PMC5772172.
- 465 41. Schupp JC, Khanal S, Gomez JL, Sauler M, Adams TS, Chupp GL, et al. Single-Cell
466 Transcriptional Archetypes of Airway Inflammation in Cystic Fibrosis. *Am J Respir Crit Care Med.*
467 2020;202(10):1419-29. Epub 2020/07/01. doi: 10.1164/rccm.202004-0991OC. PubMed PMID:
468 32603604; PubMed Central PMCID: PMC7667912.
- 469

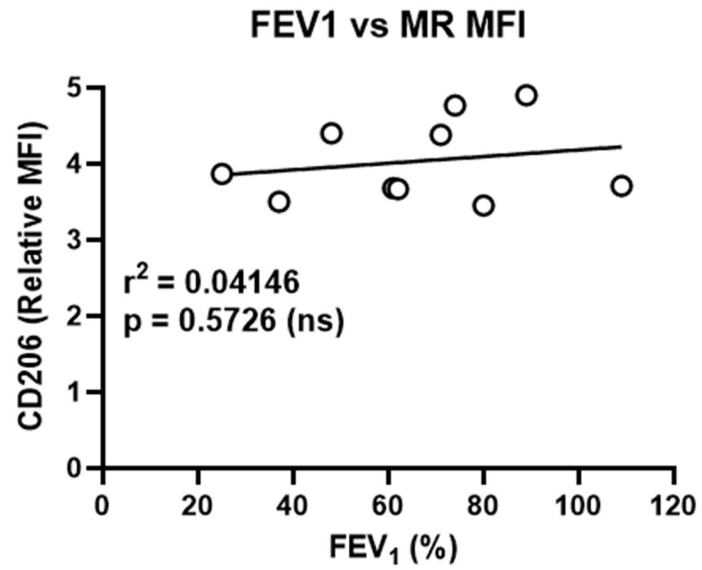
Table 1

Demographic details for CF and matched control donors utilised in this study.

	CF	Controls
Number (n)	10	8
Sex (F/M)	4/6	3/5
Mean age \pm SD (years)	32.4 \pm 13.1	37.3 \pm 13.5
Genotype	Δ F508 homozygous: 7 Δ F508 heterozygous: 3	N/A
Median FEV₁ (range)	66.5 % (25%-109%)	N/A
Positive <i>P. aeruginosa</i> culture	Yes: 3 No: 7 (of which 5 have never been positive for PA)	N/A
Azithromycin	4	N/A
Steroids (inhaled)	8	N/A
Steroids (oral)	1	N/A
Percentage of CD45+CD14+ cells in fresh blood (mean \pm SEM)	6.94 \pm 0.77	7.95 \pm 0.74

A**Fresh****Unt****M-CSF****GM-CSF****GM-CSF + IL-4****B****% CD11b+ cells****% CD206+ cells****% HLA-DR+ cells****% CD209+ cells**

- Fresh
- Untreated
- M-CSF
- GM-CSF
- GM-CSF+IL-4

A**B**