

1 Dairy consumption and incident cardiovascular disease: a global 2 analysis

3 Pan Zhuang^{1,2,#}, Xiaohui Liu^{3,#}, Yin Li³, Yang Ao³, Yuqi Wu², Hao Ye³, Xuzhi Wan²,
4 Lange Zhang³, Denghui Meng², Yimei Tian², Xiaomei Yu², Fan Zhang², Anli Wang²,
5 Yu Zhang^{1,2*}, and Jingjing Jiao^{3*}.

6 Affiliations:

7 ¹Department of Gastroenterology, The First Affiliated Hospital, Zhejiang University
8 School of Medicine, Hangzhou 310006, Zhejiang, China

9 ²Department of Food Science and Nutrition, Zhejiang Key Laboratory for Agro-Food
10 Processing, College of Biosystems Engineering and Food Science, Zhejiang
11 University, Hangzhou 310058, Zhejiang, China.

12 ³Department of Nutrition, School of Public Health, Department of Endocrinology, The
13 Second Affiliated Hospital, Zhejiang University School of Medicine, Hangzhou
14 310058, Zhejiang, China.

15 ***Correspondence to:** Jingjing Jiao, PhD, Department of Nutrition, School of Public
16 Health, Department of Endocrinology, The Second Affiliated Hospital, Zhejiang
17 University School of Medicine, 866 Yuhangtang Road, Hangzhou 310058, Zhejiang,
18 China. Tel.: +86-571-8898-1368. E-mail: jingjingjiao@zju.edu.cn. Or Yu Zhang, PhD,
19 Department of Gastroenterology, The First Affiliated Hospital, Zhejiang University
20 School of Medicine, Department of Food Science and Nutrition, College of
21 Biosystems Engineering and Food Science, Zhejiang University, 866 Yuhangtang
22 Road, Hangzhou 310058, Zhejiang, China. Tel.: +86-571-88982211. E-mail:
23 y_zhang@zju.edu.cn;

24 # The two authors equally contributed to the work.

25 **Short running title:** Dairy Consumption and Cardiovascular Disease

NOTE: This preprint reports new research that has not been certified by peer review and should not be used to guide clinical practice.

26 **Abstract**

27 **BACKGROUND:** The role of dairy products in the primary prevention of
28 cardiovascular disease (CVD) remains highly debated. Our study aimed to
29 comprehensively evaluate the association between dairy consumption and CVD risk
30 in Eastern and Western countries.

31 **METHODS:** Cohort analyses include 487 212 individuals from the China Kadoorie
32 Biobank (CKB) and 418 895 individuals from the UK Biobank (UKB). Dairy
33 consumption was assessed by validated food frequency questionnaires. We
34 calculated hazard ratios using multivariable Cox proportional-hazards models. The
35 primary outcome was incident CVD, coronary heart disease (CHD) and stroke. An
36 updated meta-analysis of prospective cohort studies was further conducted.

37 **RESULTS:** A total of 98 954 CVD cases occurred during a mean follow-up of 8.6
38 years in CKB and 11.3 years in UKB. In CKB, regular dairy consumption (mainly liquid
39 whole milk) was not associated with CVD risk but significantly associated with a 9%
40 (95% confidence interval [CI], 5% to 13%) higher CHD risk and a 6% (95% CI, 3% to
41 9%) lower stroke risk compared with non/rare consumers. In UKB, total dairy
42 consumption was associated with lower risk of CVD, CHD and ischemic stroke.
43 Cheese consumption was associated with lower CVD risk. Multivariable-adjusted
44 hazard ratios (HRs) (95% CIs) comparing ≥ 7 times/week to the < 2 times/week of
45 cheese were 0.88 (0.83–0.94) for CVD, 0.88 (0.82–0.94) for CHD, and 0.97 (0.85–
46 1.11) for stroke. Semi-skimmed milk consumers had decreased risk of CVD and
47 stroke. In the updated meta-analysis, total dairy consumption was significantly
48 associated with a lower risk of CVD (relative risk [RR], 0.963; 95% CI, 0.932 to 0.995;
49 26 risk estimates) and stroke (RR, 0.94; 95% CI, 0.90 to 0.98; 14 risk estimates).
50 Inverse associations with CVD incidence were found for cheese (0.94; 0.91 to 0.97;

51 20 risk estimates) and low-fat dairy (0.96; 0.92 to 0.99; 20 risk estimates) but not milk
52 and yogurt.

53 **CONCLUSIONS:** Total dairy consumption is associated with a lower risk of total CVD
54 and stroke overall but relationships vary by types of dairy products. Cheese and
55 low-fat dairy consumption may be advocated for the primary prevention of CVD.

56 **Key Words:** Dairy products; Cheese; Cardiovascular disease; Coronary heart
57 disease; Stroke.

58

59 **Nonstandard Abbreviations and Acronyms**

60 BMI, body mass index; CHD, coronary heart disease; CI, confidence interval; CKB,
61 China Kadoorie Biobank; CRP, C-reactive protein; CVD, cardiovascular disease; FFQ,
62 food frequency questionnaire; HDL, high-density lipoprotein; HR, hazard ratios; LDL,
63 low-density lipoprotein; RR, relative risk; SFA, saturated fatty acids; TDI, Townsend
64 deprivation index; UKB, UK Biobank.

65

66 **Clinical Perspective**

67 **What Is New ?**

- 68 • Whether dairy products are protective for cardiovascular disease (CVD) remains
69 highly debated.
- 70 • This global largest analysis that included two original cohorts of 0.9 million
71 participants from China and the UK and an updated meta-analysis demonstrates
72 that higher consumption of total dairy products was associated with lower risk of
73 CVD and stroke overall.
- 74 • For dairy subtypes, cheese and low-fat dairy consumption was associated with
75 lower CVD risk while no significant association was observed for milk, yogurt, and
76 high-fat dairy consumption.

77 **What Are the Clinical Implications ?**

- 78 • Results from our two large cohort studies and updated meta-analysis support that
79 dairy product consumption is protective for CVD, especially stroke, and provide
80 compelling evidence relevant to dietary guidelines.
- 81 • Considering specific dairy subtypes, cheese, and low-fat dairy products may be
82 protective and should be advocated for CVD prevention.

83

84 Cardiovascular disease (CVD) is the largest contributor to death globally.¹ Adopting
85 healthy dietary patterns is one of the cornerstones of primary prevention of CVD.
86 Thereinto, although dairy consumption features in many dietary guidelines, its role in
87 a heart-healthy diet remains highly debated.² Dairy products contain various
88 beneficial nutrients, including high biological value protein, milk fat globule
89 phospholipids, and vitamins and minerals that could improve CVD risk factors,³⁻⁵
90 whereas saturated fats⁶ and multiple anabolic hormones⁷ in dairy products might
91 adversely affect the health benefit. Previous prospective studies linking dairy
92 consumption with CVD outcomes have yielded conflicting results. Some cohort
93 studies reported a protective relationship between dairy consumption and CVD
94 outcomes,⁸⁻¹² whereas others showed no significant associations¹³⁻¹⁶ or even
95 positive associations.^{17, 18} Meta-analyses also yielded inconsistent conclusions on
96 associations of dairy intake with CHD and stroke risk.^{19, 20} Notably, heterogeneity
97 between included studies was considerable and the overall quality of the evidence
98 was low to moderate.

99 Prevailing recommendations advocate low-fat or non-fat dairy over whole-fat
100 dairy.²¹ However, scientific evidence for this recommendation was scant and
101 inconsistent.¹⁹ Importantly, different subtypes of dairy products may confer divergent
102 health effects after processing. Fermented milk products such as yogurt contain
103 probiotics that can favorably regulate gut microbiome,²² whereas cheese is rich in
104 sodium which may elevate blood pressure when consumed in excessive amounts.²³
105 Nonetheless, cheese is also a fermented food that can contain vitamin K2, high levels
106 of milk fat globule membrane, as well as probiotics. Furthermore, previous
107 epidemiological studies were largely conducted in western countries, where the
108 consumption level of dairy products especially cheese is high and usually correlated

109 with a higher socio-economic position.^{24, 25} In Asia where strokes are more common
110 than CHD, only few studies demonstrated an inverse association of dairy
111 consumption with stroke.^{8, 26} Overall, evidence from large cohort studies in both
112 western and non-western countries is needed to make global policy
113 recommendations.

114 To address the above-mentioned gaps in knowledge, we followed 0.9 million
115 individuals from the UK Biobank (UKB) study and the China Kadoorie Biobank (CKB)
116 study to evaluate the associations of dairy product consumption with incident CVD,
117 CHD and stroke. We also performed an updated systematic review of the literature
118 and meta-analysis of dairy product intake and incident CVD risk which included our
119 findings to address the role of dairy consumption in CVD prevention and improve
120 dietary guidelines.

121

122 **METHODS**

123 **Study Population**

124 CKB is one of the largest cohort studies that recruited over 500,000 adults from ten
125 geographically diverse areas across China during 2004-2008.²⁷ The CKB study
126 received ethical approval from the Oxford University Tropical Research Ethics
127 Committee, the Chinese Centre for Disease Control and Prevention (CDC) Ethical
128 Review Committee and the local CDC of each study area. All participants gave
129 written informed consent. For this analysis, participants with a history of CVD or
130 cancer were excluded at baseline, which resulted in a sample of 487 212 individuals
131 in the CKB.

132 UKB is also a large prospective study of more than 500,000 people who were
133 aged 37–73 years and recruited from one of 22 assessment centers across the UK

134 between 2007 and 2010.²⁸ The UK Biobank received ethical approval from the
135 research ethics committee (REC reference for UK Biobank 11/NW/0382). Among 502
136 476 participants, we excluded participants with a history of CVD or cancer at baseline
137 and participants who withdrew during the follow-up (data cannot be used).
138 Furthermore, we excluded persons without data on cheese consumption frequency
139 from the food frequency questionnaire (FFQ) or those without information about
140 24-hour dietary recalls. Finally, 418 895 individuals in the UKB remained in the final
141 analytical samples for cheese consumption and 183 446 individuals remained for
142 individual dairy products. The detailed flow chart is shown in [Figure S1](#).

143

144 **Dietary Assessments**

145 In the CKB, participants were asked about the consumption frequency of 12 major
146 food groups, including total dairy products over the preceding year by a qualitative
147 FFQ. The weighted kappa statistics of dairy consumption frequency were 0.82 for
148 reproducibility and 0.75 for validity, comparing two FFQs conducted in the second
149 and third surveys with the baseline FFQ, which implicated good performance of the
150 FFQ²⁹. Subtypes of dairy products were not included in the baseline FFQ and thus
151 were not analyzed in CKB.

152 In the UKB, participants completed a touch to Screen short FFQ that consisted of
153 29 diet questions over the past 12 months, including frequency of cheese intake (0,
154 <1, 1, 2 to 4, 5 to 6, ≥7 times a week) and type of milk (never/rarely have milk, full,
155 semi-skimmed, skimmed cream, soya, other) in which they could select multiple types
156 of milk they drank. Besides, participants were invited to complete a 24-hour dietary
157 questionnaire that inquired about the consumption of nearly 200 foods and drinks
158 including various dairy products (milk, cheese, yogurt and ice cream). Five separate

159 occasions of 24-hour dietary recalls were conducted during 2011-2012 to provide an
160 average measure for individuals (repeated measurement per person). The dietary
161 touch-screen FFQ has been validated against online 24-hour dietary assessments³⁰
162 and the latter has been validated using biomarkers reported elsewhere.³¹

163

164 **Ascertainment of Incident Cardiovascular Disease**

165 Detailed information used to define incident CVD cases including fatal or non-fatal
166 CHD and stroke is presented in [Table S1](#). Incident cases of CVD were identified by
167 using linkages with disease registries and national health insurance claim databases
168 and further supplemented with annual active follow-up in CKB. In UKB, information on
169 the CVD cases of all participants was obtained from cumulative hospital inpatient
170 records. All events were ascertained using the International Classification of Diseases,
171 10th Revision (ICD–10).

172

173 **Statistical Analysis**

174 The main exposures of interest were the frequency of total dairy consumption in CKB
175 and the frequency of cheese intake (<2, 2 to 4, 5 to 6, or ≥7 times a week), milk type,
176 and total dairy consumption in UKB. The intake of dairy products (0, ≤0.5, 0.5 to 1,
177 or >1 serving per day), including milk, yogurt, and cheese (0, ≤0.5, or >0.5 serving per
178 day), was categorized into predefined categories based on consumption distributions.

179 The person-year was calculated from the date of entry to the time of CVD
180 diagnosis, lost to follow-up, death, or the end date of follow-up (December 31, 2016
181 for CKB, and 31 December 2020 for UKB), whichever occurred earlier. Only 1.2% of
182 individuals in CKB and 0.3% in UKB were lost to follow-up and censored in analyses.
183 Cox proportional hazards regression model was used to estimate hazard ratios (HRs)

184 and 95% confidence intervals (CIs) of CVD risk for total or each type of dairy product
185 consumption after checking the violation of the proportional hazard assumption. To
186 control known and potential confounders, multivariable models were sequentially
187 adjusted for age, sex, race, study area (for CKB)/assessment centers (for UKB), body
188 mass index (BMI), education level, household income, Townsend deprivation index
189 (TDI, only in UKB), smoking status, alcohol drinking, physical activity, history of
190 hypertension, history of diabetes, family history of CVD, use of vitamins, minerals and
191 aspirin, and consumption frequency of red meat, processed red meat (only in UKB),
192 fish, oily fish (only in UKB), non-oily fish (only in UKB), poultry, vegetables, fruits, and
193 eggs (all categories of consumption). All missing data were coded as an independent
194 category if necessary. The linear trend was tested by fitting the ordinal dairy variables
195 as continuous variables in the models.

196 As dairy products are one of the major sources of dietary protein, we used
197 substitution analysis to estimate the theoretical effect on CVD risk of substituting one
198 serving of dairy products for an equivalent serving of other common alternative
199 protein sources, including red/processed meat, fish, poultry, eggs, and
200 soybean/legumes.¹¹ We further examined whether the documented associations
201 varied by subgroups according to baseline characteristics, including age, sex, BMI,
202 household income, smoking status, alcohol intake frequency, physical activity, diet
203 quality, hypertension, diabetes, and family history of CVD. Besides, we conducted
204 several sensitivity analyses. First, we adjusted a healthy diet score^{32 33} to evaluate
205 the influence of the overall diet quality. Second, lipid-lowering drugs or
206 anti-hypertensive medications were further adjusted in the model. Third, we further
207 excluded incident CVD cases within the first 2 years of follow-up or participants with
208 extreme BMIs (<18.5 or >40 kg/m²). Finally, participants were censored at a 5-y

209 follow-up. In addition, in CKB analysis, we used a multivariable Cox frailty model with
210 random intercepts to account for center clustering (10 regions). In UKB analysis, we
211 further adjusted for energy intake or salt added to food to see whether the main
212 findings altered.

213 All statistical analyses were conducted with SAS 9.4 (SAS Institute, Cary, NC,
214 USA) and a two-sided $P < 0.05$ was considered statistically significant.

215

216 **Meta-analysis**

217 We performed a systematic review and updated meta-analysis including UKB and
218 CKB studies as well as previous prospective cohort studies which explored the
219 relationship of dairy product intake with CVD risk in the general population. [Table S2](#)
220 shows the search strategy. Additional details of the meta-analysis are provided ([for](#)
221 [details, see the Expanded Methods in the Supplemental Material](#)).

222

223 **RESULTS**

224 **Cohort Analyses**

225 During a follow-up of 4 190 676 person-years in CKB and 4 736 113 person-years in
226 UKB, we documented 66 132 CVD cases in CKB and 32 822 CVD cases in UKB. In
227 CKB, participants who consumed dairy products more frequently tended to be women,
228 higher-educated, high-income class, urban residents and vitamin and mineral
229 supplements users, have diabetes and family history of CVD, and consume fruits and
230 eggs more frequently ([Table S3](#)). In UKB, individuals with higher total dairy
231 consumption were more likely to exercise, be more educated, take vitamin and
232 mineral supplements, and consume oily fish and fruits more frequently, whereas they
233 drank alcohol less frequently and had a lower hypertension prevalence ([Table S4](#)).

234 Characteristics of participants by cheese consumption (the main subtype of dairy in
235 UKB) and milk types in UKB are shown in [Tables S5 and S6](#).

236 Compared to non/rare consumers, those who consumed at least 4 times/week of
237 dairy had no significant association with CVD after the multivariable adjustment in
238 CKB (HR 1.09, 95% CI 0.97–1.03, P-trend=0.470). Regular dairy consumption was
239 related to a 9% higher risk of CHD (HR 1.09, 95% CI 1.05–1.13, P-trend<0.001) but a
240 6% lower risk of stroke (HR 0.94, 95% CI 0.91–0.97, P-trend=0.005), especially
241 hemorrhagic stroke (HR 0.76, 95% CI 0.69–0.83, P-trend<0.001) (**Table 1**). In UKB,
242 total dairy intake was inversely associated with incident CVD (HR 0.93, 95% CI 0.88–
243 0.98, P-trend=0.004), CHD (HR 0.93, 95% CI 0.88–0.99, P-trend=0.014), and
244 ischemic stroke (HR 0.86, 95% CI 0.75–0.99, P-trend=0.036) (**Table 2**). For individual
245 dairy products, cheese consumption was associated with lower CVD and CHD risk.
246 The HRs (95% CIs) comparing the frequency at least 7 times/week of cheese with
247 less than 2 times/week were 0.88 (0.83–0.94) for CVD, 0.88 (0.82–0.94) for CHD,
248 and 0.97 (0.85–1.11) for stroke in the fully adjusted model ([Table S7](#)), which was
249 similar to the results from 24 h dietary recalls ([Table S8](#)). For subtypes of cheese,
250 both hard cheese and fresh cheese (>0.5 serving/d) were associated with a lower risk
251 of CVD and CHD ([Tables S9 to S11](#)). We found milk consumption (>0 to 0.5 serving/d)
252 was associated with a lower risk of hemorrhagic stroke (HR 0.43, 95% CI 0.21–0.87)
253 and yogurt consumption (>0.5 serving/d) was related to decreased ischemic stroke
254 risk (HR 0.86, 95% CI 0.77–0.98), compared with non-consumers ([Tables S12 and](#)
255 [S13](#)). With regard to different types of milk, compared with participants who never or
256 rarely drank milk, both semi-skimmed and skimmed milk consumers had decreased
257 CVD risk (semi-skimmed: HR 0.92, 95% CI 0.87–0.98; skimmed: HR 0.91, 95% CI
258 0.86–0.97) and stroke risk (semi-skimmed: HR 0.80, 95% CI 0.71–0.90; skimmed:

259 HR 0.76, 95% CI 0.66–0.86) (Table S14).

260 We also found significant interactions by sex and history of diabetes in the
261 subgroup analyses in both CKB and UKB (Tables S15 to S18). Moreover, our results
262 did not alter substantially in sensitivity analyses (Tables S19 to S22). In hypothetical
263 substitution analyses (Figure S2), though we didn't find a significant association for
264 CVD risk when replacing red meats, fish, poultry, or soybeans with dairy products,
265 replacing eggs with dairy products was related to a 12% higher risk of CVD ($P < 0.001$)
266 in CKB. Besides, a higher risk of CHD ($P < 0.001$) and stroke ($P = 0.039$) was also
267 observed when eggs were replaced by total dairy products. Substituting one serving
268 of dairy products for red meats or soybeans was associated with lower stroke risk
269 (HR for red meats 0.93, 95% CI 0.89–0.98; HR for soybeans 0.92, 95% CI 0.87–0.97).
270 No significant results were found for hypothetical substitution analyses in UKB.

271

272 **Systematic Review and Meta-Analysis**

273 Overall, 30 publications from 25 prospective cohorts and our results from CKB and
274 UKB were kept in our final meta-analysis (Figure S3, Tables S23 and S24). During a
275 range of 5.5 to 30.0 follow-up years, 73 193 CVD cases were documented among 1
276 288 420 participants from 30 countries or territories around the world in the previous
277 studies (30 studies) (Table S25).

278 Although no significant association was found between total dairy intake and
279 incident CVD in the meta-analysis of previously published studies (RR 0.963, 95% CI
280 0.926–1.001, $n = 24$ risk estimates), the summary RR (95% CI) turned into 0.963
281 (0.932–0.995) when the results of CKB and UKB studies were added (Figure 1).
282 Each serving/day increment of total dairy products was related to a 2% lower CVD
283 risk (RR 0.98, 95% CI 0.96–0.99, $P < 0.001$, $n = 17$ risk estimates) (Figure S4). A similar

284 inverse relationship for CVD was also shown in non-linear analysis (P-nonlinear
285 =0.002, n=12 studies, [Figure S5](#)). For subtypes of CVD, the meta-analysis showed
286 dairy consumption had an inverse relationship with total stroke risk (RR 0.94, 95% CI
287 0.90–0.98, 14 risk estimates, $I^2=61.8\%$) but null association with CHD risk (RR 0.98,
288 95% CI 0.93–1.02, 19 risk estimates, $I^2=70.5\%$, **Figure 1**).

289 For major subtypes of dairy products, high intake of fermented dairy products,
290 especially cheese, had a protective association with CVD risk (RR for fermented dairy
291 0.96, 95% CI: 0.94–0.98, n=24 risk estimates; RR for cheese 0.94, 95% CI: 0.91–
292 0.97, n=20 risk estimates), but not yogurt (RR 0.99, 95% CI 0.93–1.06, n=14 risk
293 estimates) or milk (RR 1.00, 95% CI 0.97–1.04, n=21 risk estimates) (**Figure 2 and**
294 [Figure S6](#)). Cheese intake was also associated with decreased risk of CHD and
295 stroke ([Figures S7 and S8](#)). Considering the content of fat, consumption of low-fat
296 dairy products was significantly related to lower total CVD (RR: 0.96, 95% CI: 0.92–
297 0.99, n=20 risk estimates) and stroke risk (RR: 0.90, 95% CI: 0.84–0.97, n=9 risk
298 estimates) (**Figure 3 and Figure S9**). No significant relationships were observed for
299 high-fat dairy products (including high-fat milk, high-fat yogurt, high-fat cheese, and
300 cream or butter) (**Figure 3 and Figure S10**). For subtypes of stroke, milk consumption
301 was related to a higher risk of hemorrhagic stroke (RR 1.08, 95% CI 1.01–1.17, n=5
302 risk estimates) and a decreased ischemic stroke risk was detected for total dairy (RR
303 0.92, 95% CI 0.86–0.99, n=7 risk estimates) and cheese consumption (RR 0.91, 95%
304 CI 0.85–0.97, n=4 risk estimates) ([Figures S11 to S14](#)).

305 For total dairy consumption, we observed considerable heterogeneity across the
306 studies ($I^2=66.1\%$) but did not find any publication bias (**Figure 1 and Figures S15 to**
307 [S19](#)). No significant heterogeneity was found in the predefined subgroup (sex,
308 follow-up duration, region, Newcastle-Ottawa Scale score, etc.) meta-regressions

309 (Table S26), indicating the source of heterogeneity mainly comes from subtypes of
310 dairy. No single study disproportionately caused the heterogeneity (Figure S20).
311 Results of influence analysis for subtypes of dairy and subtypes of CVD are shown in
312 Figures S21 to S30. If no significant heterogeneity was found across the studies for
313 specific meta-analyses, we also conducted a fixed effects model to calculate
314 summary HRs and 95% CIs which showed similar results (Table S27).

315

316 **DISCUSSION**

317 In both UKB and CKB studies, dairy consumption was overall associated with lower
318 risk of stroke. Further analysis of dairy subtypes in UKB revealed that cheese and
319 skimmed/semi-skimmed milk consumption were inversely associated with CVD risk.
320 The updated meta-analysis overall supported that dairy consumption, especially
321 cheese and low-fat dairy consumption, was beneficial for CVD prevention among the
322 general population.

323

324 **Comparison with Previous Studies and Possible Explanations**

325 Our finding of the inverse association of dairy consumption with stroke risk was
326 consistent with a recent meta-analysis showing a 1 to Serving/d increase in total dairy
327 consumption was significantly related to a 4% decreased stroke risk.²⁰ Although dairy
328 products are major sources of saturated fatty acids (SFA) (about 65% of total fats),
329 which has been shown to increase low-density lipoprotein (LDL) cholesterol levels,
330 emerging evidence suggests that a low LDL cholesterol level (<70 mg/dL) was a risk
331 factor for hemorrhagic stroke.^{34, 35} A meta-analysis summarizing data from 462,268
332 participants showed a dose-response relation of dietary SFA intake with lower stroke
333 risk, especially intracranial hemorrhage risk.³⁶ Congruously, we found that moderate

334 intake of milk ($0 < \text{milk intake} \leq 0.5$ serving/d) was associated with lower hemorrhagic
335 stroke risk in UKB and total dairy consumption (mainly fresh milk/liquid whole milk in
336 China)^{37, 38} was related to lower hemorrhagic stroke risk in CKB. Importantly, despite
337 a high content of even-chain SFAs, dairy fats also consist of medium-chain (9.8%)
338 and odd-chain (31.9%) SFAs,³⁹ which may improve insulin sensitivity,⁴⁰ Besides, dairy
339 products also contain potentially beneficial natural trans fats, unsaturated fats,
340 specific amino acids, branched-chain fats, vitamins K1 and K2, and calcium.⁴¹ Thus,
341 given the complex food matrix of dairy products, their health impact cannot be fully
342 accounted for by the presumed effect of SFAs. In our substitution analysis, replacing
343 red meats with dairy products was related to lower stroke risk in CKB, reinforcing that
344 the source of SFAs is more important. In addition, meta-analyses of randomized
345 controlled trials demonstrated that fermented milk or dairy foods enriched with
346 probiotics could reduce blood pressure,^{42, 43} which also partially explains the
347 protective association for stroke, including a lower ischemic stroke risk for dairy in
348 UKB and our meta-analysis.

349 With regard to CHD, we found great heterogeneity between UKB and CKB
350 studies, which was also shown in our further updated meta-analysis ($I^2=68.6\%$).
351 Further analyses revealed that the discrepancy between studies may be largely
352 ascribed to different subtypes of dairy products. The protective relationship was
353 mainly driven by cheese intake in the UKB study, which was further supported by our
354 updated meta-analysis. Consistently, a meta-analysis of 15 prospective studies
355 demonstrated that cheese consumption was related to reduced risk of CHD (RR [95%
356 CI] for high vs. low consumption 0.86 [0.77–0.96]), stroke and total CVD.⁴⁴ Another
357 meta-analysis also showed a protective relationship of fermented dairy products with
358 CVD risk and such protective association was detected for cheese but not yogurt.¹⁹

359 Although cheese, especially hard cheese, is rich in salt, saturated fat and calories, we
360 still detected protective relationships for both hard cheese and fresh cheese in UKB.
361 Potential mechanisms that underpin the relationship may be related to the high
362 content of calcium, which may benefit cardiovascular health by limiting the absorption
363 of SFAs and cholesterol⁴⁵ and regulating the cell membrane potentials of the
364 myocardium.⁴⁶ Cheese also contains a high amount of conjugated linoleic acid that
365 has been evidenced to inhibit the progression or induce the regression of
366 atherosclerosis through modulating monocyte/macrophage function.⁴⁷ In addition, the
367 fermentation of dairy produced beneficial vitamin K₂ that has been linked with a lower
368 CHD risk.⁴⁸ Microorganisms or probiotics from fermented dairy could modulate the
369 gut microbiota composition, inhibit the reabsorption of bile acid, and produce
370 beneficial short-chain fatty acids.⁴⁹ A recent meta-analysis of 39 trials demonstrated
371 that probiotic fermented milk products reduced serum total cholesterol and LDL
372 cholesterol levels.⁵⁰ However, our results of the updated meta-analysis and other
373 meta-analyses found little benefit of yogurt consumption on CVD risk,^{19, 51} which
374 could be due to the commonly added sugars or artificial sweeteners that might
375 counteract the health benefit.⁵² Pertaining to milk consumption, mixed results have
376 been reported from prospective studies.^{19, 53} A meta-analysis of cohort studies
377 reported that milk intake was associated with a 4% (1%–5%) higher CHD mortality,⁵⁴
378 which was congruent with our finding of a positive relation with CHD risk in CKB
379 where liquid whole milk was the major dairy product.^{37, 38} In addition to the long
380 even-chain SFAs elevating LDL cholesterol, a high D-galactose intake from
381 non-fermented milk could be toxic.⁵⁵ D-galactose has been widely used to establish
382 an experimental model for premature aging by inducing oxidative stress and chronic
383 inflammation,^{55, 56} which is also involved in the pathogenesis of CVD. Results from 2

384 large Swedish cohorts showed positive relations of milk intake with oxidative stress
385 and inflammation markers while negative associations were observed for fermented
386 milk products.⁵⁷ Altogether, individual dairy products have divergent associations with
387 CVD risk, which seemed to be the major reason for the discrepant results for CHD
388 observed in CKB and UKB and also for the great heterogeneity between studies in
389 our meta-analysis. Therefore, our study provides compelling evidence to highlight the
390 importance of focusing on specific types of dairy products among which cheese may
391 be the healthiest choice for the primary prevention of CVD.

392 Although prevailing dietary recommendations advocate consuming low-fat or
393 non-fat dairy products over high-fat dairy/whole milk, previous evidence from
394 meta-analyses showed no significant relations of low-fat dairy consumption with CVD
395 or CHD risk.^{19, 20} Our meta-analysis showed inverse relationships of low-fat dairy
396 consumption with CVD and stroke risk, supporting the protective role of low-fat dairy
397 in CVD prevention. Nonetheless, we found no detrimental associations for high-fat
398 dairy consumption. In a meta-analysis of 20 trials, both low-fat and high-fat dairy
399 consumption increased body weight but had neutral effects on other cardiometabolic
400 indicators, including waist circumference, fasting glucose, LDL cholesterol,
401 high-density lipoprotein (HDL) cholesterol, blood pressure and C-reactive protein
402 (CRP).⁵⁸ Overall, current evidence suggests low-fat dairy may be beneficial for CVD
403 whereas specific subtypes of high-fat dairy such as cheese could also be protective.
404 More large studies are needed to compare low-fat with high-fat dairy on long-term
405 CVD outcomes.

406

407 **Strengths and Limitations**

408 This analysis has important strengths, including the large sample size, long follow-up

409 duration, and the design of using data from two large cohorts in the UK and China,
410 which enable us to directly compare the results from western vs. eastern countries.
411 Finally, the updated meta-analysis provides a comprehensive overview of the
412 evidence. Potential limitations also deserve attention. First, measurement errors by
413 FFQs are inevitable in epidemiological studies. However, such errors tend to
414 attenuate findings toward the null because of the prospective analysis. Although
415 absolute dairy intake was not estimated in CKB and UKB, consumption frequency is
416 rather useful in categorizing individuals on the basis of relative intakes. The
417 consumption of subtypes of dairy products assessed from 24-hour recalls in UKB
418 might not be representative of an individual's long-term dietary habits. However, we
419 calculated mean intakes from five separate occasions of 24-hour dietary recalls
420 conducted from 2011 to 2012 (repeated measurement per person) to minimize this
421 bias. Second, unmeasured or residual confounding cannot be fully ruled out despite
422 our full adjustment for multiple risk factors. Specifically, higher dairy consumption
423 seemed to be indicative of a higher socioeconomic status. Nonetheless, our results
424 were consistent among both individuals with higher and lower income, indicating the
425 documented associations of dairy were independent of socioeconomic status. Third,
426 dairy consumption was measured once at baseline and changes over time were not
427 considered. However, we still observed similar findings for a shorter follow-up
428 duration (5 years), indicating that repeated measures are unlikely to affect our
429 findings. Fourth, we could not further analyze dairy subtypes separately in CKB and
430 butter was also not assessed in both CKB and UKB due to the lack of available data,
431 which could have provided more implications.

432

433 **Conclusions and Implications**

434 The results from our two large cohort studies and updated meta-analysis show that
435 dairy consumption is associated with lower risk of stroke and total CVD overall while
436 relationships for subtypes of dairy products differ. Cheese consumption but not milk
437 or yogurt was inversely associated with CVD risk. Low-fat dairy consumption was
438 inversely related to CVD and stroke risk. Our findings provide useful clinical evidence
439 to advocate the consumption of dairy, especially cheese and low-fat dairy, for the
440 primary prevention of CVD.

441 **Acknowledgements**

442 We are grateful to UK Biobank and CKB participants. This research has been
443 conducted using the UK Biobank resource (<https://www.ukbiobank.ac.uk>) under
444 application number 47365 and CKB resource (<https://www.ckbiobank.org/>) under
445 application number DAR-2020–00282. We thank Chinese Center for Disease Control
446 and Prevention, Chinese Ministry of Health, National Health and Family Planning
447 Commission of China, and 10 provincial/regional Health Administrative Departments.
448 The most important acknowledgement is to the participants in the CKB study and the
449 members of the survey teams in each of the 10 regional centers, as well as to the
450 project development and management teams based at Beijing, Oxford and the 10
451 regional centers.

452 **Sources of Funding**

453 This research was supported by the National Key Research and Development
454 Program of China (grant no. 2017YFC1600500), China National Program for Support
455 of Top-notch Young Professionals, and China Postdoctoral Science Foundation (grant
456 no. 2022T150577).

457 **Disclosures**

458 None.

459 **Conflict of interest**

460 The authors declare that there is no conflict of interest.

461 **Data availability statement**

462 The UK Biobank data are available from the UK Biobank on request
463 (www.ukbiobank.ac.uk/). Details of how to access China Kadoorie Biobank data and
464 details of the data release schedule are available from
465 www.ckbiobank.org/site/Data+Access.

466 **References**

- 467 1. Yusuf S, Rangarajan S, Teo K, Islam S, Li W, Liu L, Bo J, Lou Q, Lu F, L
468 iu T, Yu L, Zhang S, Mony P, Swaminathan S, Mohan V, Gupta R, Kumar R,
469 Vijayakumar K, Lear S, Anand S, Wielgosz A, Diaz R, Avezum A, Lopez-Jaram
470 illo P, Lanas F, Yusoff K, Ismail N, Iqbal R, Rahman O, Rosengren A, Yusufali
471 A, Kelishadi R, Kruger A, Puoane T, Szuba A, Chifamba J, Oguz A, McQuee
472 n M, McKee M and Dagenais G. Cardiovascular risk and events in 17 low-, mi
473 ddle-, and high-income countries. *N Engl J Med*. 2014;371:818–827.
- 474 2. Willett WC and Ludwig DS. Milk and health. *N Engl J Med*. 2020;382:644–
475 654.
- 476 3. Soedamah-Muthu Sabita S, Verberne Lisa DM, Ding Eric L, Engberink Mari
477 ëlle F and Geleijnse Johanna M. Dairy consumption and incidence of hypertens
478 ion. *Hypertension*. 2012;60:1131–1137.
- 479 4. Elwood PC, Pickering JE and Fehily AM. Milk and dairy consumption, diabe
480 tes and the metabolic syndrome: the Caerphilly prospective study. *J Epidemiol
481 Community Health*. 2007;61:695–698.
- 482 5. Pérez-Hernández N, Apton-Duque G, Nostroza-Hernández MC, Vargas-Alar
483 cón G, Rodríguez-Pérez JM and Blachman-Braun R. Vitamin D and its effects
484 on cardiovascular diseases: a comprehensive review. *Korean J Intern Med*. 201
485 6;31:1018–1029.
- 486 6. Li Y, Hruby A, Bernstein AM, Ley SH, Wang DD, Chiuve SE, Sampson L,
487 Rexrode KM, Rimm EB, Willett WC and Hu FB. Saturated fats compared with
488 unsaturated fats and sources of carbohydrates in relation to risk of coronary he
489 art disease: a prospective cohort study. *J Am Coll Cardiol*. 2015;66:1538–1548.
- 490 7. Aune D, Navarro Rosenblatt DA, Chan DSM, Vieira AR, Vieira R, Greenwo

- 491 od DC, Vatten LJ and Norat T. Dairy products, calcium, and prostate cancer ris
492 k: a systematic review and meta-analysis of cohort studies. *Am J Clin Nutr.* 20
493 15;101:87–117.
- 494 8. Kinjo Y, Beral V, Akiba S, Key T, Mizuno S, Appleby P, Yamaguchi N, Wat
495 anabe S and Doll R. Possible protective effect of milk, meat and fish for cereb
496 rovascular disease mortality in Japan. *J Epidemiol.* 1999;9:268–274.
- 497 9. Buendia JR, Li Y, Hu FB, Cabral HJ, Bradlee ML, Quatromoni PA, Singer
498 MR, Curhan GC and Moore LL. Regular yogurt intake and risk of cardiovascul
499 ar disease among hypertensive adults. *Am J Hypertens.* 2018;31:557–565.
- 500 10. Bernstein AM, Pan A, Rexrode KM, Stampfer M, Hu FB, Mozaffarian D an
501 d Willett WC. Dietary protein sources and the risk of stroke in men and wome
502 n. *Stroke.* 2012;43:637–644.
- 503 11. Bernstein AM, Sun Q, Hu FB, Stampfer MJ, Manson JE and Willett WC. M
504 ajor dietary protein sources and risk of coronary heart disease in women. *Circu
505 lation.* 2010;122:876–883.
- 506 12. Dehghan M, Mente A, Rangarajan S, Sheridan P, Mohan V, Iqbal R, Gupta
507 R, Lear S, Wentzel-Viljoen E, Avezum A, Lopez-Jaramillo P, Mony P, Varma R
508 P, Kumar R, Chifamba J, Alhabib KF, Mohammadifard N, Oguz A, Lanas F, Ro
509 zanska D, Bostrom KB, Yusoff K, Tsolkile LP, Dans A, Yusufali A, Orlandini A,
510 Poirier P, Khatib R, Hu B, Wei L, Yin L, Deeraili A, Yeates K, Yusuf R, Ismail
511 N, Mozaffarian D, Teo K, Anand SS and Yusuf S. Association of dairy intake
512 with cardiovascular disease and mortality in 21 countries from five continents
513 (PURE): a prospective cohort study. *Lancet.* 2018;392:2288–2297.
- 514 13. Louie CJ, Flood MV, Burlutsky G, Rangan MA, Gill PT and Mitchell P. Dair
515 y consumption and the risk of 15-year cardiovascular disease mortality in a co

- 516 hort of older australians. *Nutrients*. 2013;5:441–454.
- 517 14. Dalmeijer GW, Struijk EA, van der Schouw YT, Soedamah-Muthu SS, Versch
518 huren WMM, Boer JMA, Geleijnse JM and Beulens JWJ. Dairy intake and coro
519 nary heart disease or stroke—a population-based cohort study. *Int J Cardiol*. 20
520 13;167:925–929.
- 521 15. Soedamah-Muthu SS, Masset G, Verberne L, Geleijnse JM and Brunner EJ.
522 Consumption of dairy products and associations with incident diabetes, CHD a
523 nd mortality in the Whitehall II study. *Br J Nutr*. 2012;109:718–726.
- 524 16. Bonthuis M, Hughes MCB, Ibiebele TI, Green AC and van der Pols JC. Da
525 iry consumption and patterns of mortality of Australian adults. *Eur J Clin Nutr*.
526 2010;64:569.
- 527 17. Larsson SC, Männistö S, Virtanen MJ, Kontto J, Albanes D and Virtamo J.
528 Dairy foods and risk of stroke. *Epidemiology*. 2009;20:355–360.
- 529 18. Olsson E, Larsson SC, Höjjer J, Kilander L and Byberg L. Milk and fermen
530 ted milk consumption and risk of stroke: longitudinal study. *Nutrients*. 2022;14:1
531 070.
- 532 19. Guo J, Astrup A, Lovegrove JA, Gijssbers L, Givens DI and Soedamah-Muth
533 u SS. Milk and dairy consumption and risk of cardiovascular diseases and all-c
534 ause mortality: dose-response meta-analysis of prospective cohort studies. *Eur*
535 *J Epidemiol*. 2017;32:269–287.
- 536 20. Chen Z, Ahmed M, Ha V, Jefferson K, Malik V, Ribeiro PAB, Zuchinali P a
537 nd Drouin-Chartier JP. Dairy product consumption and cardiovascular health: a
538 systematic review and meta-analysis of prospective cohort studies. *Adv Nutr*. 2
539 021;13:439–454.
- 540 21. Alexander DD, Bylsma LC, Vargas AJ, Cohen SS, Doucette A, Mohamed

- 541 M, Irvin SR, Miller PE, Watson H and Fryzek JP. Dairy consumption and CVD:
542 a systematic review and meta-analysis. *Br J Nutr.* 2016;115:737–750.
- 543 22. Fernández M, Hudson JA, Korpela R and de los Reyes-Gavilán CG. Impact
544 on human health of microorganisms present in fermented dairy products: an o
545 verview. *Biomed Res Int.* 2015;2015:412714.
- 546 23. Neal B, Wu Y, Feng X, Zhang R, Zhang Y, Shi J, Zhang J, Tian M, Huang
547 L, Li Z, Yu Y, Zhao Y, Zhou B, Sun J, Liu Y, Yin X, Hao Z, Yu J, Li KC, Zh
548 ang X, Duan P, Wang F, Ma B, Shi W, Di Tanna GL, Stepien S, Shan S, Pea
549 rson SA, Li N, Yan LL, Labarthe D and Elliott P. Effect of salt substitution on
550 cardiovascular events and death. *N Engl J Med.* 2021;385:1067–1077.
- 551 24. James WP, Nelson M, Ralph A and Leather S. Socioeconomic determinants
552 of health. The contribution of nutrition to inequalities in health. *BMJ.* 1997;314:
553 1545–1549.
- 554 25. Sanchez-Villegas A, Martínez JA, Prättälä R, Toledo E, Roos G and Martín
555 ez-González MA. A systematic review of socioeconomic differences in food habi
556 ts in Europe: consumption of cheese and milk. *Eur J Clin Nutr.* 2003;57:917.
- 557 26. Huang L-Y, Wahlqvist ML, Huang Y-C and Lee M to S. Optimal dairy intak
558 e is predicated on total, cardiovascular, and stroke mortalities in a Taiwanese c
559 ohort. *J Am Coll Nutr.* 2014;33:426–436.
- 560 27. Chen Z, Chen J, Collins R, Guo Y, Peto R, Wu F and Li L. China Kadoori
561 e Biobank of 0.5 million people: survey methods, baseline characteristics and I
562 ong-term follow-up. *Int J Epidemiol.* 2011;40:1652–1666.
- 563 28. Sudlow C, Gallacher J, Allen N, Beral V, Burton P, Danesh J, Downey P, E
564 lliott P, Green J, Landray M, Liu B, Matthews P, Ong G, Pell J, Silman A, You
565 ng A, Sprosen T, Peakman T and Collins R. UK biobank: an open access res

- 566 ource for identifying the causes of a wide range of complex diseases of middle
567 and old age. *PLoS Med.* 2015;12:e1001779.
- 568 29. Qin C, Guo Y, Pei P, Du H, Yang L, Chen Y, Shen X, Shi Z, Qi L, Chen
569 J, Chen Z, Yu C, Lv J and Li L. The relative validity and reproducibility of foo
570 d frequency questionnaires in the China Kadoorie Biobank study. *Nutrients.* 202
571 2;14:794.
- 572 30. Bradbury KE, Young HJ, Guo W and Key TJ. Dietary assessment in UK Bi
573 obank: an evaluation of the performance of the touchscreen dietary questionnai
574 re. *J Nutr Sci.* 2018;7:e6.
- 575 31. Greenwood DC, Hardie LJ, Frost GS, Alwan NA, Bradbury KE, Carter M, E
576 lliott P, Evans CEL, Ford HE, Hancock N, Key TJ, Liu B, Morris MA, Mulla UZ,
577 Petropoulou K, Potter GDM, Riboli E, Young H, Wark PA and Cade JE. Validat
578 ion of the Oxford WebQ online 24-hour dietary questionnaire using biomarkers.
579 *Am J Epidemiol.* 2019;188:1858–1867.
- 580 32. Zhuang P, Liu X, Li Y, Wan X, Wu Y, Wu F, Zhang Y and Jiao J. Effect of
581 diet quality and genetic predisposition on hemoglobin A(1c) and type 2 diabet
582 es risk: gene-diet interaction analysis of 357,419 individuals. *Diabetes Care.* 20
583 21;44:2470–2479.
- 584 33. Mozaffarian D. Dietary and policy priorities for cardiovascular disease, diabe
585 tes, and obesity: a comprehensive review. *Circulation.* 2016;133:187–225.
- 586 34. Rist PM, Buring JE, Ridker PM, Kase CS, Kurth T and Rexrode KM. Lipid
587 levels and the risk of hemorrhagic stroke among women. *Neurology.* 2019;92:e
588 2286–e2294.
- 589 35. Ma C, Gurol ME, Huang Z, Lichtenstein AH, Wang X, Wang Y, Neumann
590 S, Wu S and Gao X. Low-density lipoprotein cholesterol and risk of intracerebr

- 591 al hemorrhage: a prospective study. *Neurology*. 2019;93:e445–e457.
- 592 36. Kang ZQ, Yang Y and Xiao B. Dietary saturated fat intake and risk of stro
593 ke: systematic review and dose-response meta-analysis of prospective cohort st
594 udies. *Nutr Metab Cardiovasc Dis*. 2020;30:179–189.
- 595 37. Huang F, Wang H, Wang Z, Zhang J, Su C, Du W, Jiang H, Jia X, Ouyan
596 g Y, Wang Y, Li L and Zhang B. Knowledge, behavior and consumption types
597 of milk and dairy products among the Chinese aged 60 and above in 15 provi
598 nces (autonomous regions and municipalities) in 2015. *Wei Sheng Yan Jiu*. 201
599 9;48:9–15.
- 600 38. Jin S, Yuan R, Zhang Y and Jin X. Chinese consumers' preferences for att
601 ributes of fresh milk: a best-worst approach. *Int J Environ Res Public Health*. 2
602 019;16:4286.
- 603 39. Månsson HL. Fatty acids in bovine milk fat. *Food Nutr Res*. 2008;52:1821.
- 604 40. Imamura F, Fretts A, Marklund M, Ardisson Korat AV, Yang WS, Lankinen
605 M, Qureshi W, Helmer C, Chen TA, Wong K, Bassett JK, Murphy R, Tittle N,
606 Yu CI, Brouwer IA, Chien KL, Frazier-Wood AC, Del Gobbo LC, Djoussé L, Ge
607 leijnse JM, Giles GG, de Goede J, Gudnason V, Harris WS, Hodge A, Hu F, K
608 oulman A, Laakso M, Lind L, Lin HJ, McKnight B, Rajaobelina K, Risérus U, R
609 obinson JG, Samieri C, Siscovick DS, Soedamah-Muthu SS, Sotoodehnia N, S
610 un Q, Tsai MY, Uusitupa M, Wagenknecht LE, Wareham NJ, Wu JH, Micha R,
611 Forouhi NG, Lemaitre RN and Mozaffarian D. Fatty acid biomarkers of dairy f
612 at consumption and incidence of type 2 diabetes: a pooled analysis of prospect
613 ive cohort studies. *PLoS Med*. 2018;15:e1002670.
- 614 41. Mozaffarian D and Wu JHY. Flavonoids, dairy foods, and cardiovascular an
615 d metabolic health: a review of emerging biologic pathways. *Circ Res*. 2018;12

- 616 2:369–384.
- 617 42. Usinger L, Reimer C and Ibsen H. Fermented milk for hypertension. *Cochra*
618 *ne Database Syst Rev.* 2012;4:Cd008118.
- 619 43. Dixon A, Robertson K, Yung A, Que M, Randall H, Wellalagodage D, Cox
620 T, Robertson D, Chi C and Sun J. Efficacy of probiotics in patients of cardiova
621 scular disease risk: a systematic review and meta-analysis. *Curr Hypertens Rep.*
622 2020;22:74.
- 623 44. Chen GC, Wang Y, Tong X, Szeto IMY, Smit G, Li ZN and Qin LQ. Chees
624 e consumption and risk of cardiovascular disease: a meta-analysis of prospectiv
625 e studies. *Eur J Nutr.* 2017;56:2565–2575.
- 626 45. Mulet-Cabero AI and Wilde PJ. Role of calcium on lipid digestion and seru
627 m lipids: a review. *Crit Rev Food Sci Nutr.* 2023;63:813–826.
- 628 46. Sutanto H, Lyon A, Lumens J, Schotten U, Dobrev D and Heijman J. Cardi
629 omyocyte calcium handling in health and disease: insights from in vitro and in
630 silico studies. *Prog Biophys Mol Biol.* 2020;157:54–75.
- 631 47. Bruen R, Fitzsimons S and Belton O. Atheroprotective effects of conjugated
632 linoleic acid. *Br J Clin Pharmacol.* 2017;83:46–53.
- 633 48. Geleijnse JM, Vermeer C, Grobbee DE, Schurgers LJ, Knapen MH, van der
634 Meer IM, Hofman A and Witteman JC. Dietary intake of menaquinone is asso
635 ciated with a reduced risk of coronary heart disease: the Rotterdam Study. *J N*
636 *utr.* 2004;134:3100–3105.
- 637 49. Hjerpsted J and Tholstrup T. Cheese and cardiovascular disease risk: a rev
638 iew of the evidence and discussion of possible mechanisms. *Crit Rev Food Sci*
639 *Nutr.* 2016;56:1389–1403.
- 640 50. Ziaei R, Ghavami A, Khalesi S, Ghiasvand R and Mokari Yamchi A. The ef

- 641 fect of probiotic fermented milk products on blood lipid concentrations: a syste
642 matic review and meta-analysis of randomized controlled trials. *Nutr Metab Car*
643 *diovasc Dis.* 2021;31:997–1015.
- 644 51. Wu L and Sun D. Consumption of yogurt and the incident risk of cardiovas
645 cular disease: a meta-analysis of nine cohort studies. *Nutrients.* 2017;9:315.
- 646 52. Wan Z, Khubber S, Dwivedi M and Misra NN. Strategies for lowering the a
647 dded sugar in yogurts. *Food Chem.* 2021;344:128573.
- 648 53. Chen Z, Ahmed M, Ha V, Jefferson K, Malik V, Ribeiro PAB, Zuchinali P a
649 nd Drouin-Chartier JP. Dairy product consumption and cardiovascular health: a
650 systematic review and meta-analysis of prospective cohort studies. *Adv Nutr.* 2
651 021;13:439–54.
- 652 54. Mazidi M, Mikhailidis DP, Sattar N, Howard G, Graham I and Banach M. C
653 onsumption of dairy product and its association with total and cause specific m
654 ortality - a population-based cohort study and meta-analysis. *Clin Nutr.* 2019;38:
655 2833–2845.
- 656 55. Lai K, Elsas LJ and Wierenga KJ. Galactose toxicity in animals. *IUBMB Lif*
657 e. 2009;61:1063–1074.
- 658 56. Cui X, Zuo P, Zhang Q, Li X, Hu Y, Long J, Packer L and Liu J. Chronic
659 systemic D-galactose exposure induces memory loss, neurodegeneration, and o
660 xidative damage in mice: protective effects of R-alpha-lipoic acid. *J Neurosci R*
661 es. 2006;83:1584–1590.
- 662 57. Michaëlsson K, Wolk A, Langenskiöld S, Basu S, Warensjö Lemming E, Me
663 lhus H and Byberg L. Milk intake and risk of mortality and fractures in women
664 and men: cohort studies. *BMJ.* 2014;349:g6015.
- 665 58. Benatar JR, Sidhu K and Stewart RA. Effects of high and low fat dairy foo

666 d on cardio-metabolic risk factors: a meta-analysis of randomized studies. *PLoS*

667 *ONE*. 2013;8:e76480.

668

Figure legends

Figure 1. Associations of dairy consumption with cardiovascular disease, coronary heart disease, and stroke risk for high compared with low category of intake using random effects meta-analysis. (A) Cardiovascular disease. (B) Coronary heart disease. (C) Stroke.

Squares represent study to Specific relative risk. Gray square areas are proportional to the individual study weight for the overall meta-analysis. Horizontal lines denote 95% CIs. I^2 refers to the proportion of heterogeneity among studies. M, men; W, women; CKB, China Kadoorie Biobank; UKB, UK Biobank.

Figure 2. Associations of milk, yogurt, cheese consumption with cardiovascular disease risk for high compared with low category of intake using random effects meta-analysis. (A) Milk. (B) Yogurt. (C) Cheese. Squares represent study to Specific relative risk. Gray square areas are proportional to the individual study weight for the overall meta-analysis.

Horizontal lines denote 95% CIs. I^2 refers to the proportion of heterogeneity among studies. M, men; W, women; CKB, China Kadoorie Biobank; UKB, UK Biobank.

Figure 3. Associations of low-fat and high-fat dairy consumption with cardiovascular disease risk for high compared with low category of intake using random effects meta-analysis. (A) Low-fat. (B) High-fat. Squares represent study to Specific relative risk. Gray square areas are proportional to the individual study weight for the overall meta-analysis. Horizontal lines denote 95% CIs. I^2 refers to the proportion of heterogeneity among studies. M, men; W, women; CKB, China Kadoorie Biobank; UKB, UK Biobank.

Table 1. Hazard ratios (95% confidence intervals) for incident cardiovascular disease according to categories of dairy consumption in China Kadoorie Biobank

	Frequency of dairy consumption				P trend
	Never/rarely	Monthly	1-3 d/wk	Regularly (≥4 d/wk)	
Total cardiovascular disease					
No of cases (%)	42 641 (12.6)	7830 (14.5)	5788 (14.1)	9873 (18.1)	
Person-years	2 939 269	450 552	343 795	457 060	
Model 1*	1 (Reference)	1.21 (1.18–1.24)	1.26 (1.23–1.30)	1.33 (1.30–1.36)	<0.001
Model 2†	1 (Reference)	1.00 (0.98–1.03)	0.98 (0.95–1.01)	0.94 (0.92–0.97)	<0.001
Model 3‡	1 (Reference)	1.01 (0.99–1.04)	1.00 (0.97–1.03)	0.96 (0.93–0.98)	0.007
Model 4§	1 (Reference)	1.03 (1.00–1.05)	1.03 (1.00–1.06)	1.00 (0.97–1.03)	0.470
Coronary heart disease					
No of cases (%)	21 129 (6.3)	4032 (7.5)	3264 (8.0)	6051 (11.1)	
Person-years	3 006 398	463 388	352 952	471 541	
Model 1*	1 (Reference)	1.24 (1.20–1.28)	1.41 (1.36–1.46)	1.61 (1.57–1.66)	<0.001
Model 2†	1 (Reference)	1.03 (1.00–1.07)	1.03 (0.99–1.07)	1.04 (1.00–1.07)	0.023
Model 3‡	1 (Reference)	1.04 (1.00–1.08)	1.05 (1.01–1.09)	1.05 (1.01–1.09)	0.002
Model 4§	1 (Reference)	1.05 (1.02–1.09)	1.07 (1.03–1.12)	1.09 (1.05–1.13)	<0.001
Stroke					
No of cases (%)	25 708 (7.6)	4732 (8.8)	3338 (8.1)	5450 (10.0)	
Person-years	2 999 803	461 574	353 514	475 204	
Model 1*	1 (Reference)	1.20 (1.17–1.24)	1.20 (1.16–1.24)	1.17 (1.13–1.20)	<0.001
Model 2†	1 (Reference)	0.98 (0.95–1.01)	0.96 (0.92–0.99)	0.88 (0.85–0.91)	<0.001
Model 3‡	1 (Reference)	0.99 (0.96–1.02)	0.98 (0.94–1.02)	0.89 (0.86–0.92)	<0.001
Model 4§	1 (Reference)	1.01 (0.98–1.04)	1.01 (0.97–1.05)	0.94 (0.91–0.97)	0.005
Haemorrhagic stroke					
No of cases (%)	6128 (1.8)	825 (1.5)	410 (1.0)	552 (1.0)	
Person-years	3 065 433	475 123	363 921	492 972	
Model 1*	1 (Reference)	0.86 (0.80–0.92)	0.60 (0.55–0.67)	0.48 (0.44–0.52)	<0.001
Model 2†	1 (Reference)	0.89 (0.83–0.96)	0.83 (0.75–0.92)	0.66 (0.60–0.72)	<0.001
Model 3‡	1 (Reference)	0.92 (0.85–0.99)	0.87 (0.78–0.96)	0.69 (0.63–0.76)	<0.001
Model 4§	1 (Reference)	0.95 (0.88–1.02)	0.92 (0.83–1.02)	0.76 (0.69–0.83)	<0.001
Ischaemic stroke					
No of cases (%)	20 256 (6.0)	4008 (7.4)	2992 (7.3)	4966 (9.1)	
Person-years	3 010 375	463 106	354 354	476 285	
Model 1*	1 (Reference)	1.30 (1.25–1.34)	1.37 (1.31–1.42)	1.35 (1.31–1.40)	<0.001
Model 2†	1 (Reference)	0.99 (0.96–1.03)	0.98 (0.94–1.02)	0.90 (0.87–0.93)	<0.001
Model 3‡	1 (Reference)	1.00 (0.97–1.04)	1.00 (0.96–1.04)	0.91 (0.88–0.95)	<0.001
Model 4§	1 (Reference)	1.02 (0.98–1.05)	1.03 (0.98–1.07)	0.96 (0.92–0.99)	0.090

*Model 1 was adjusted for age and sex.

†Model 2 was further adjusted for study area (10 regions), survey season, education (no formal school, primary school, middle or high school, or college and above), income (in yuan/year; <5000, 5000-9999, 10 000–19 999, 20 000-34 999, or ≥35 000), physical activity (in MET-h/wk; quartiles), smoking (never/occasionally, former, or current smoker), alcohol drinking (never/occasionally, former, or current drinker), family history of CVD (yes or no), aspirin use (yes or no), vitamins use (yes or no) and minerals use (yes or no).

‡Model 3 was further adjusted for body mass index (in kg/m²; <18.5, 18.5-23.9, 24-27.9, or ≥28), history of hypertension (yes or no), and diabetes (yes or no).

§Model 4 was further adjusted for red meat, fish, poultry, eggs, fruits (never/rarely, monthly, 1–3

days/week, or regularly), and vegetables (daily or less than daily).

Table 2. Hazard ratios (95% confidence intervals) for incident cardiovascular disease according to categories of dairy consumption in UK Biobank

	Dairy consumption				P trend
	0 serving/d	≤0.5 serving/d	0.5–1.0 serving/d	> 1 serving/d	
N	33 803	34 858	54 276	60 509	
CVD					
No of cases (%)	2448 (7.2)	2292 (6.6)	3497 (6.4)	3895 (6.4)	
Person-years	373 622.5	390 329.4	606 703.7	678 468.8	
Model 1*	1 [Reference]	0.87 (0.83–0.93)	0.86 (0.81–0.90)	0.84 (0.80–0.88)	<0.001
Model 2†	1 [Reference]	0.93 (0.88–0.99)	0.91 (0.86–0.96)	0.90 (0.86–0.95)	<0.001
Model 3‡	1 [Reference]	0.95 (0.90–1.01)	0.92 (0.88–0.97)	0.92 (0.87–0.97)	<0.001
Model 4§	1 [Reference]	0.96 (0.90–1.01)	0.93 (0.88–0.98)	0.93 (0.88–0.98)	0.004
CHD					
No of cases (%)	2042 (6.0)	1906 (5.5)	2912 (5.4)	3228 (5.3)	
Person-years	375 317.5	391 952.6	609 158.4	681 277.5	
Model 1*	1 [Reference]	0.87 (0.82–0.93)	0.86 (0.81–0.91)	0.84 (0.80–0.89)	<0.001
Model 2†	1 [Reference]	0.94 (0.88–1.00)	0.92 (0.87–0.97)	0.91 (0.86–0.96)	<0.001
Model 3‡	1 [Reference]	0.96 (0.90–1.02)	0.93 (0.88–0.99)	0.92 (0.87–0.98)	0.005
Model 4§	1 [Reference]	0.96 (0.90–1.02)	0.94 (0.89–0.99)	0.93 (0.88–0.99)	0.014
Stroke					
No of cases (%)	499 (1.5)	457 (1.3)	698 (1.3)	802 (1.3)	
Person-years	384 114.7	399 863.2	621 356.8	694 107.5	
Model 1*	1 [Reference]	0.84 (0.74–0.96)	0.82 (0.73–0.92)	0.83 (0.74–0.93)	0.003
Model 2†	1 [Reference]	0.89 (0.78–1.01)	0.86 (0.77–0.97)	0.87 (0.78–0.98)	0.027
Model 3‡	1 [Reference]	0.90 (0.79–1.02)	0.87 (0.78–0.98)	0.89 (0.79–0.99)	0.051
Model 4§	1 [Reference]	0.91 (0.80–1.03)	0.88 (0.78–0.99)	0.90 (0.80–1.01)	0.084
Hemorrhagic stroke					
No of cases (%)	81 (0.2)	73 (0.2)	106 (0.2)	138 (0.2)	
Person-years	385 796.5	401 501.5	623 807.9	696 931.7	
Model 1*	1 [Reference]	0.82 (0.60–1.13)	0.76 (0.57–1.02)	0.87 (0.66–1.14)	0.369
Model 2†	1 [Reference]	0.85 (0.62–1.17)	0.79 (0.59–1.05)	0.89 (0.67–1.17)	0.464
Model 3‡	1 [Reference]	0.86 (0.62–1.18)	0.79 (0.59–1.06)	0.90 (0.68–1.19)	0.521
Model 4§	1 [Reference]	0.86 (0.63–1.19)	0.80 (0.60–1.07)	0.91 (0.69–1.20)	0.555
Ischemic stroke					
No of cases (%)	338 (1.0)	307 (0.9)	472 (0.9)	512 (0.9)	
Person-years	384 882.6	400 535.3	622 373.4	695 336.2	
Model 1*	1 [Reference]	0.84 (0.72–0.98)	0.82 (0.71–0.94)	0.78 (0.68–0.89)	<0.001
Model 2†	1 [Reference]	0.89 (0.77–1.04)	0.87 (0.75–1.00)	0.83 (0.72–0.95)	0.010
Model 3‡	1 [Reference]	0.91 (0.78–1.06)	0.88 (0.76–1.01)	0.85 (0.74–0.98)	0.023
Model 4§	1 [Reference]	0.92 (0.78–1.07)	0.89 (0.77–1.02)	0.86 (0.75–0.99)	0.036

*Model 1 was adjusted for age (continues) and sex (male or female).

†Model 2 was additionally adjusted for centers (22 categories), survey season (spring, summer, autumn, or winter), education (college or university degree, vocational qualifications, optional national exams at ages 17–18 years, national exams at age 16 years, others, or missing), household income (<£18 000, £18 000–£30 999, £31 000–£51 999, £52 000–£100 000, >£100 000, or missing), physical activity (MET-h/wk, quartiles), smoking (never, former, current, or missing), alcohol drinking (never or special occasions only, 1 or 2 times/week, 3 or 4 times/week, ≥5 times/week, or missing), family history of CVD (yes or no), aspirin use (yes or no), vitamins use (yes or no) and minerals use (yes or no).

‡Model 3 was further adjusted for body mass index (in kg/m²; <18.5, 18.5 to 25, 25 to 30), history of hypertension (yes or no), and diabetes (yes or no).

§Model 4 was further adjusted for red meat, poultry (times/week; <2, 2-4, >4), processed red meat, oily fish, non-oily fish (times/week; <1, 1, ≥2), vegetables (servings/day; <1, 1-3, ≥3), fruits (servings/day; <2, 2-4, ≥4), and eggs (yes or no).

Figure 1

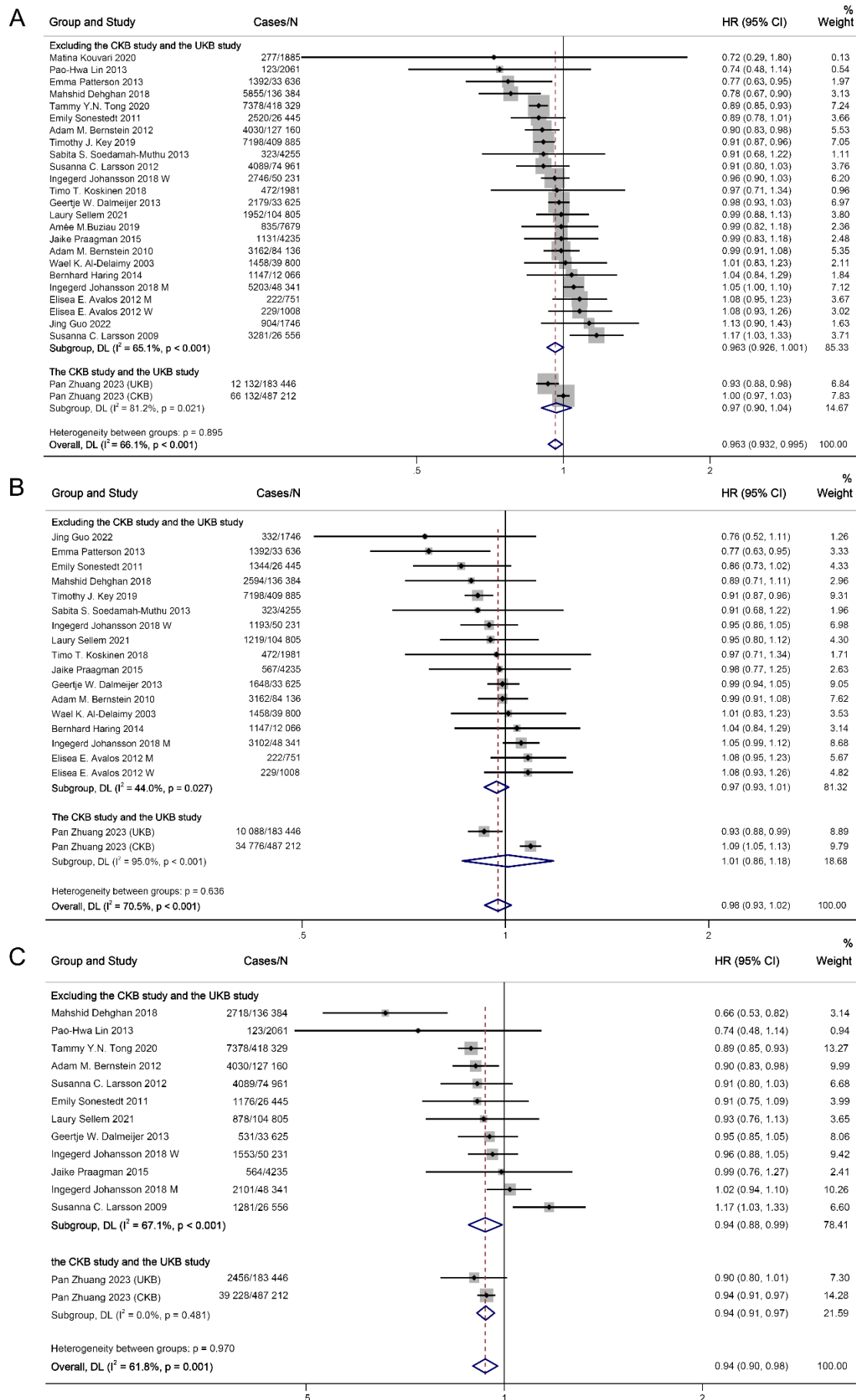


Figure 2

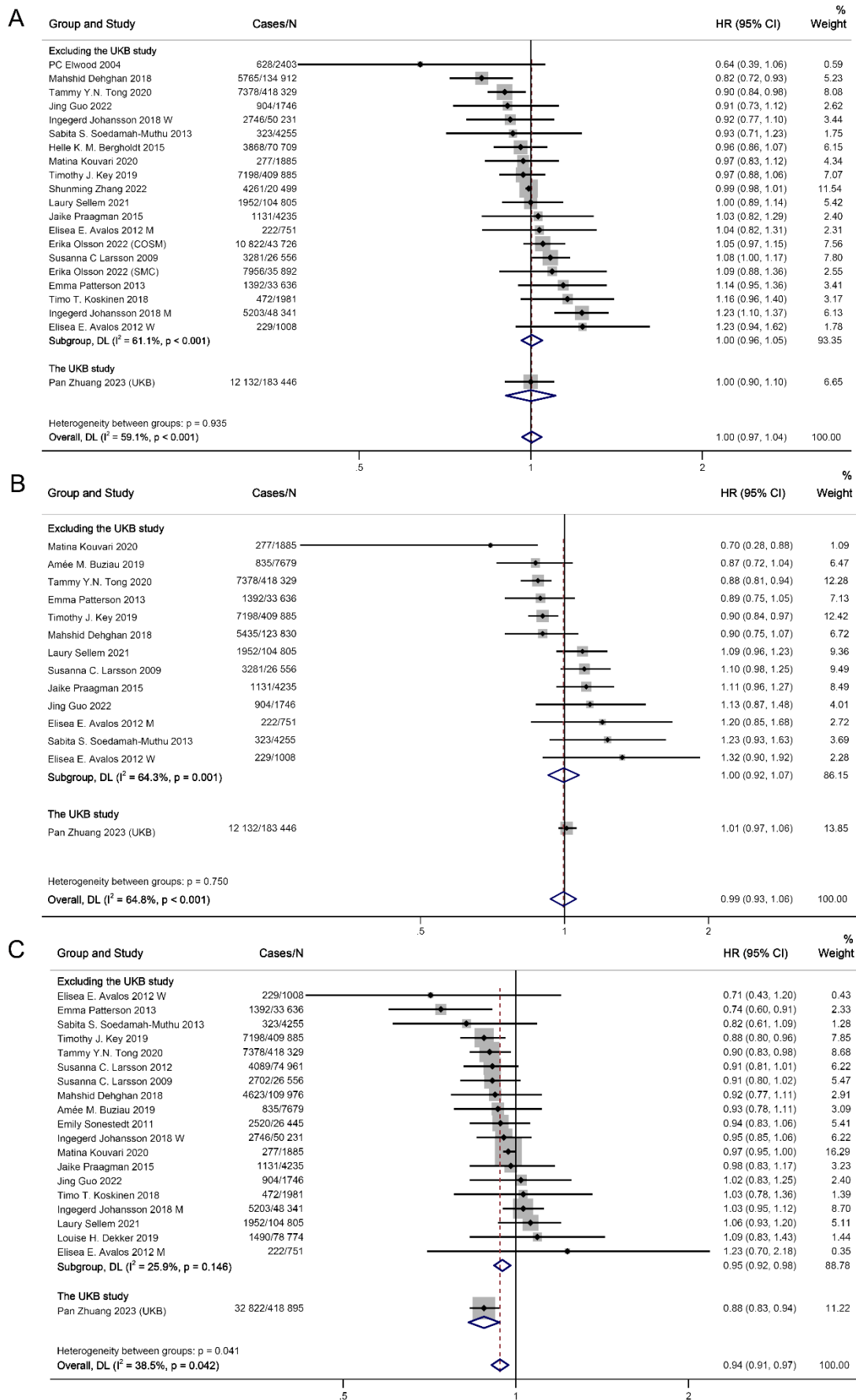


Figure 3

