

1 **An emerging clade of Chikungunya West African genotype discovered in real-time during**  
2 **2023 outbreak in Senegal**

3 Abdou Padane<sup>1,2</sup>, Houriiyah Tegally<sup>2</sup>, Yajna Ramphal<sup>2</sup>, Ndiaye Seyni<sup>1</sup>, Mariéma Sarr<sup>1</sup>, Mame  
4 Matar Diop<sup>1</sup>, Cyrille Kouligueul Diedhiou<sup>1</sup>, Aminata Mboup<sup>1</sup>, Ndèye Dieyna Diouf<sup>1</sup>, Abdoulaye  
5 Souaré<sup>1</sup>, Ndéye Diabou Diagne<sup>1</sup>, Marilynne Aza-Gnandji<sup>1</sup>, Ndèye Astou Dabo<sup>1</sup>, Yacine Amet  
6 Dia<sup>1</sup>, Ndeye Aminata Diaw<sup>1</sup>, Nafissatou Leye<sup>1</sup>, Papa Alassane Diaw<sup>1</sup>, Ambroise Ahouidi<sup>1</sup>,  
7 Badara Cissé<sup>1</sup>, Abdoulaye Samba Diallo<sup>1</sup>, Ousmane Diop<sup>1</sup>, Abdou Aziz Diallo<sup>1</sup>, Souadou  
8 Ndoye<sup>1</sup>, Tomasz J. Sanko<sup>2</sup>, Cheryl Baxter<sup>2</sup>, Eduan Wilkinson<sup>2</sup>, James E. San<sup>2</sup>, Derek Tshabuila<sup>2</sup>,  
9 Yeshnee Naidoo<sup>2</sup>, Sureshnee Pillay<sup>3</sup>, Richard Lessells<sup>3</sup>, Khady Cissé<sup>4</sup>, Abdoulaye Leye<sup>4</sup>, Khalifa  
10 Ababacar Mbaye<sup>4</sup>, Dramane Kania<sup>5</sup>, Bachirou Tinto, Isidore<sup>5</sup> Traoré<sup>5</sup>, Sampawendé Thérèse  
11 Kagone<sup>5</sup>, Abdoul Salam Ouedraogo<sup>5</sup>, Robert J. Gifford<sup>2</sup>, José Lourenço<sup>6</sup>, Marta Giovanetti<sup>7</sup>,  
12 Jennifer Giandhari<sup>3</sup>, Tulio de Oliveira<sup>2,3</sup>, Souleymane Mboup<sup>1</sup>

13 <sup>1</sup>Institut de Recherche en Santé, de Surveillance Épidémiologique et de Formation (IRESSEF),  
14 Dakar, Senegal.

15 <sup>2</sup>Centre for Epidemic Response and Innovation (CERI), School of Data Science and  
16 Computational Thinking, Stellenbosch University, Stellenbosch 7600, South Africa.

17 <sup>3</sup> KwaZulu-Natal Research Innovation and Sequencing Platform (KRISP), Nelson R Mandela  
18 School of Medicine, University of KwaZulu-Natal, Durban 4001, South Africa.

19 <sup>4</sup> District of Kédougou, Kédougou, Senegal.

20 <sup>5</sup> Centre MURAZ, Bobo-Dioulasso, Burkina Faso.

21 <sup>6</sup> Universidade Católica Portuguesa, Faculty of Medicine, Biomedical Research Centre, Lisbon,  
22 Portugal

23 <sup>7</sup> Instituto Rene Rachou, Fundação Oswaldo Cruz, Minas Gerais, Brazil

24 **\*Correspondance to:** souleymane.mboup@iressef.org, abdou.padane@iressef.org,  
25 tulio@sun.ac.za, houriiyah@sun.ac.za

26  
27 **Keywords:** Chikungunya virus, West African genotype, Genomic monitoring, Senegal, West  
28 Africa, Climate change

29  
30

31 **Abstract**

32 Chikungunya (CHIKV) is a re-emerging endemic arbovirus in West Africa. Since July 2023,  
33 Senegal and Burkina Faso have been experiencing an ongoing outbreak, with over 300  
34 confirmed cases detected so far in the regions of Kédougou and Tambacounda in Senegal, the  
35 largest recorded outbreak yet. CHIKV is typically maintained in a sylvatic cycle in Senegal but  
36 its evolution and factors contributing to re-emergence are so far unknown in West Africa,  
37 leaving a gap in understanding and responding to recurrent epidemics. We produced, in real-  
38 time, the first locally-generated and publicly available CHIKV whole genomes in West Africa, to  
39 characterize the genetic diversity of circulating strains, along with phylodynamic analysis to  
40 estimate time of emergence and population growth dynamics. A novel strain of the West African  
41 genotype, phylogenetically distinct from strains circulating in previous outbreaks, was identified.  
42 This suggests a likely new spillover from sylvatic cycles in rural Senegal and potential of  
43 seeding larger epidemics in urban settings in Senegal and elsewhere.

44

45

## 46 **Main Text**

47 Chikungunya virus (CHIKV) is an arbovirus transmitted by mosquitoes of the genus *Aedes*. The  
48 disease it causes is associated with acute fever and musculoskeletal pain that can become  
49 chronic, with debilitating rheumatic disease in a substantial portion of infected individuals. The  
50 first detection of CHIKV in the world was in Tanzania in East Africa in 1952<sup>1</sup>. In Senegal, the  
51 first human case was identified in 1966 in Rufisque<sup>2</sup>. Since then, sporadic cases and epidemics  
52 have been detected in the country, where CHIKV circulates in sylvatic and urban cycles, with  
53 non-human primates acting as amplification hosts<sup>3</sup>. Spread among non-human primates is  
54 influenced by immune status, susceptible simian populations and the migration of infected  
55 sylvatic vectors into human-inhabited regions<sup>3</sup>. This potentially leads to inter-epizootic silence  
56 ranging between 3-5 years within the CHIKV transmission cycle. Recent recorded outbreaks in  
57 Senegal occurred in 2009/2010 and 2015<sup>4</sup>, often in the region of Kédougou, along with sporadic  
58 cases in 2021 and 2022, and an ongoing outbreak in 2023 (<https://www.sante.gouv.sn/>).  
59 Recorded CHIKV cases are likely underestimated due to limited diagnostic capacity in rural  
60 regions and overlapping clinical symptoms with other common febrile infections, including  
61 malaria.

62  
63 CHIKV transmission dynamics and re-emergence patterns are not fully characterized in West  
64 Africa, leaving a severe gap in understanding and responding to recurrent outbreaks in the  
65 region. In Asia, Latin America, and other parts of Africa (Indian Ocean epidemic in 2005),  
66 CHIKV has previously caused large and often deadly epidemics<sup>5-9</sup>. It is therefore critical to fill  
67 gaps in the genomic characterization of CHIKV in West Africa, in real-time during outbreaks for  
68 public health response, and to understand the progression from initial emergence in rural  
69 communities to the potential of large outbreaks in urban settings. Additionally, CHIKV vaccines  
70 recently on the market are based on the East-Central-South-African (ECSA) genotype, which  
71 highlights the importance of contemporaneous genomic surveillance in regions where other  
72 lineages are known to circulate<sup>10</sup>.

73  
74 In Senegal, in July 2023, a new case of CHIKV was notified in the region of Kédougou,  
75 particularly in Saraya. A month later, on 16 August 2023, cases had risen to 66, spreading to  
76 Kédougou city, Bandafassi and Ndiormi. By the end of October, there were 303 total confirmed  
77 CHIKV in Senegal; 57.8% of which were in the Kédougou region (Figure 1A). In the Kédougou  
78 health district, the most affected communities were Bandafassi, which accounted for over 50% of  
79 cases, particularly in the village of Syllacounda Bandafassi, followed by Tomborokoto (Bantaco)  
80 and Kédougou (Ndiormy and Dalaba). Subsequently, mass communication and localized vector  
81 control measures were implemented to curb the spread of the epidemic. The region also recorded  
82 7 cases of CHIKV in 2021-2022 and is experiencing simultaneous circulation of dengue in 2023.

83  
84 We worked closely with the district of Kédougou to investigate suspected cases in Ndiormi and  
85 Bandafassi (Figure 1C), cities close to Kédougou for CHIKV screening and characterisation of  
86 circulating lineages during this outbreak. The investigation started early in the outbreak in July  
87 with active case-finding, recording of symptoms such as fever, asthenia, myalgia, headache,  
88 arthralgia, and signs of bleeding over the past 30 days. Blood samples were collected from  
89 suspected cases and submitted to molecular screening. We obtained 57 plasma specimens from  
90 suspected cases in the Kédougou region (Figure 1A, C). The demographics of the sampled cases  
91 consisted of a majority of women over 30 years, and children and young adults of both sexes

92 (Figure 1B, Supplementary Table S1). This seems to suggest infections were also acquired in  
93 households, therefore urban transmission, rather than solely sylvatic infections acquired close to  
94 forested environments. In contrast, investigations during the 2009 outbreak found no infection in  
95 <4 year olds, which seemed to indicate no household transmission<sup>11</sup>.

96  
97 Kédougou region is a rural community located in South-Eastern Senegal close to the Niokolo-  
98 Koba National Park, with a population 133,487 people, 55% of whom are under 20 years old.  
99 The climate is Sudano-Guinean with a single rainy season (May-November). Widespread  
100 activities of hunting, logging and gold extraction are a source of human contact with the forest,  
101 which have typically been associated with sylvatic transmission of CHIKV<sup>12</sup>. Mean temperatures  
102 in Senegal have been steadily increasing, with 2023 set to be one of the hottest years on record  
103 (Figure 1D). By investigating the spatial trends of this temperature increase, we find that the  
104 Kédougou region shows the biggest rise in recorded temperature between the 1980s and the last  
105 decade (Figure 1E). Together with considerable forest cover in the region (Figure 1F), this could  
106 be enhancing the ecological suitability of large, sustained outbreaks originating from sylvatic  
107 transmission. The presence of vectors and a significant proportion of a young population in  
108 regular contact with non-human primates could further facilitate transmission of CHIKV from  
109 rural to urban areas in Senegal.

110  
111 From the 57 plasma specimens collected, a total of 31 CHIKV positive samples were detected  
112 using RT-qPCR (*Seegene, Novaplex<sup>TM</sup> Tropical fever virus Assay*), with CT values <45 (mean  
113 CT value = 27.15; range = 19.20, 40.90). In one patient, co-infection of CHIKV and DENV was  
114 detected via RT-qPCR, with CT values of 25.33 for CHIKV and 38.38 for DENV, respectively.  
115 Next-generation sequencing (NGS) was successful for all 31 samples, producing 15 near whole-  
116 genomes (>70% coverage) of CHIKV. In general, the lower the CT values (high viral loads), the  
117 more complete the genomic sequence (Supplementary Figure S1). All CHIKV genomes  
118 belonged to the West-African genotype, a lineage of CHIKV that has sporadically circulated  
119 solely in West Africa. These are the first locally-generated CHIKV whole genomes produced and  
120 publicly shared in real-time in Senegal and West Africa (GISAID EpiArbo<sup>13</sup>:  
121 EPI\_ISL\_18498014-EPI\_ISL\_18498039). The sequences are rather well conserved in the E1  
122 gene, showing no known adaptation for vector competence<sup>14</sup> (Supplementary Table S2), with the  
123 caveat that recent large CHIKV epidemics in Latin America also lack mutations thought to  
124 enhance vector competence<sup>5</sup>. CHIKV in Senegal has previously been isolated from *Aedes fucifer*  
125 mosquito species, known to be present in forest regions and to act as a bridge vector between  
126 sylvatic and urban cycles. No information is currently known about mosquito vectors involved in  
127 the 2023 transmission outbreak. The environmental factors that determine the risk of human  
128 infection, or the role of specific vector species in the transmission of CHIKV from sylvatic  
129 reservoir hosts to humans, remains unclear. Detection of the same CHIKV strain in *Ae. fucifer*  
130 mosquitoes and non-human primate reservoirs would point towards this transmission being a  
131 result of a large sylvatic cycle. The detection of the virus in other *Aedes* species such as *Ae.*  
132 *Aegypti*, also present in Senegal<sup>15</sup>, would point to an urban transmission cycle.

133  
134  
135 Timed maximum likelihood phylogeny of all available CHIKV West-African genotype  
136 sequences (E1 gene or whole genomes) reveals that the 2023 outbreak sequences from  
137 Kédougou form a monophyletic cluster which is distinct from any previously identified strains in

138 Senegal, and from other known strains of the West African genotype. The West African  
139 phylogeny is deep-rooted in West Africa, with approximate inferred root in the 1960s, coinciding  
140 with the first recorded spillover from enzootic cycles<sup>2</sup>. Recently isolated detection in China has  
141 been described before<sup>16</sup>. In order to understand viral emergence and transmission dynamics of  
142 this novel clade in Senegal, we employed a Bayesian phylogenetic reconstruction approach.  
143 Using a relaxed molecular clock model for the construction of a time-calibrated MCC  
144 phylogenetic tree, we infer the estimated time to most recent common ancestor (TMRCA) of the  
145 novel clade to be early 2022 (95% highest posterior density interval; HPD = April 2020 - July  
146 2023), followed by a steady growth in effective population size until 2023 (the most recent  
147 sampling date in this study). The transmission clade associated with the 2009 outbreak has an  
148 estimated TMRCA dating back to early 2008 (HPD = December 2006 - December 2008).

149  
150 This analysis supports the finding that the emerging clade circulating during the 2023 outbreak in  
151 Kédougou is phylogenetically distinct from the one characterized during the 2009 outbreak,  
152 suggesting a distinct spillover event from sylvatic cycles in Kédougou. The detection of sporadic  
153 CHIKV cases in the region in 2021 and 2022 supports the inference of the date of emergence of  
154 the circulating clade. However, it is not possible to confirm that these sporadic cases are basal to  
155 the 2023 outbreak clade without genomic data from this period. The lack of genomic data from  
156 the 2015 outbreak also makes it impossible to infer population dynamics between the two  
157 outbreaks. The last common ancestor of the two outbreak clades along with a CHIKV isolate  
158 sampled in 2005, existed before 2005 in Senegal and likely circulated in sylvatic cycles. This  
159 provides crucial insights into the progression of Chikungunya from emergence to escalating  
160 outbreaks. In both outbreaks (2009 and 2023), it appears that the virus emerged and circulated  
161 for ~1 year before being detected in large outbreaks. The rural ecological setting of Kédougou,  
162 including close interaction between inhabitants and non-human primates, could facilitate  
163 spillover from sylvatic to urban cycles.

## 164 165 **Conclusion**

166 This study highlights the emergence of a new clade of CHIKV within the West African  
167 genotype, discovered in real-time in Senegal during the current outbreak starting in July 2023.  
168 This clade was unrelated to strains sequenced in 2009, suggesting a likely novel spillover from  
169 sylvatic cycles. It appears that this new lineage circulated for at least one year before the current  
170 epidemic. Sequencing of additional CHIKV samples from 2021/2022 sporadic cases, and from  
171 other regions would be crucial to strengthen evidence of its origin and transmission dynamics.  
172 This need is underscored by the rising temperatures in Senegal, particularly in Kédougou, and  
173 the potential of seeding larger epidemics in urban settings, specially in light of the presence of  
174 low herd-immunity. The unprecedented experience of this real-time characterisation during the  
175 CHIKV epidemic in Senegal provide important insights to help public health response and future  
176 epidemic preparedness.

## 177 **Methods**

### 178 *Study design and sampling.*

179 The investigation was conducted in collaboration with the Kédougou Health Centre in the  
180 Kédougou region (Ndiormi and Bandafassi) from 19 August to 23 August 2023. The following  
181 definitions were used during epidemic monitoring procedures. *Suspected case*: all persons  
182 residing in the surveyed areas of the Kédougou region who presented with fever (corrected  
183 axillary temperature  $\geq 38^{\circ}\text{C}$ ), and at least two of the following signs: headache, myalgias,  
184 arthralgias, skin rash, retro-orbital pain; or haemorrhagic manifestations (epistaxis,  
185 gingivorrhagia, metrorrhagia, etc.) or neurological signs; *Probable case*: Any suspected case,  
186 living or dead, with an epidemiological link to a confirmed case of Chikungunya. *Confirmed*  
187 *case*: Any suspected or probable case of Chikungunya confirmed in the laboratory by ELISA  
188 test, IgM, RT-PCR, antigen detection, serum neutralization or viral isolation. In this cross-  
189 sectional study, 57 patients presenting with symptoms compatible with an Arboviral infection  
190 from the case definition were enrolled from the District of Kédougou in Senegal. The  
191 participants included 37 samples from Ndiormi and 20 from Bandafassi during the current  
192 outbreak. Blood samples were collected by the district's staff. These samples were then sent to  
193 IRESSEF Diamniadio for confirmation and genomic sequencing.

### 194 195 *Ethical statement*

196 This project was reviewed and approved by the Comité National d'Ethique pour la Recherche au  
197 Sénégal (CNER) (Ref. N° 000031/MSAS/CNER/SP/06/02/2023). All patients who provided  
198 consent to give samples for this study were enrolled and samples were collected by staff in the  
199 Kédougou district during the 2023 Chikungunya outbreak. The Direction de la Prévention, which  
200 is part of the Senegal Ministry of Health, was informed about IRESSEF intervention during  
201 Chikungunya outbreak in Senegal on August 8, 2023 with the reference number N/Réf:  
202 SM/IRESSEF/RARS/116.09.2023.

### 203 204 *RNA extraction and molecular screening*

205 The samples were extracted using the MagMAX kit and processed on the Kingfisher platform  
206 according to the manufacturer's instructions, with the samples being eluted in a volume of 50  $\mu\text{L}$ .  
207 RT-PCR amplification was performed using the Novaplex™ Tropical Fever Virus Assay  
208 multiplex kit, which detects Chikungunya (CHIKV), Dengue (DENV), Zika (ZIKV), and West  
209 Nile (WNV) viruses (*Seegene, Novaplex™ Tropical fever virus Assay*). Amplification was  
210 carried out on Bio-Rad's CFX96 instrument, and the results were exported to the Seegene Viewer  
211 software.

### 212 213 *Setting up Whole Genome Sequencing at IRESSEF, Senegal*

214 The CLIMADE consortium supports countries in Africa, Asia, and Latin America to rapidly  
215 respond to emerging vector-borne or waterborne disease outbreaks. The support provided  
216 includes training, the sharing of sequencing protocols, and when resources allow, the provision  
217 of reagents; and personnel to assist countries in rapidly characterizing and understanding  
218 emerging epidemics. Ongoing mentorship and assistance with data analysis are also provided as  
219 part of a weekly meeting where data analysis protocols are shared and discussed. This facilitates  
220 near real-time response to outbreaks to inform public health responses. In 2022, Dr. Padane, the  
221 first author of this paper, from IRESSEF, was awarded a long-term fellowship that enabled him

222 to spend several months at the Centre for Epidemic Response and Innovation (CERI) at  
223 Stellenbosch University in South Africa to gain experience in whole genome sequencing (WGS)  
224 and epidemic response as part of CLIMADE consortium. Upon returning to Senegal, Dr. Padane  
225 initiated an integrated approach to enhance genomic surveillance and characterize the  
226 arboviruses in West Africa. The CERI team, the Fundação Oswaldo Cruz (FioCruz) team, and  
227 the KwaZulu-Natal Research Innovation and Sequencing Platform (KRISP) of the CLIMADE  
228 consortium supported Dr. Padane to establish DENV and CHIKV surveillance in West Africa  
229 by providing training, protocols, reagents and consumables.

230  
231 In short, the CLIMADE support process involved an assessment of IRESSEF laboratory  
232 capacity, which sequenced the samples locally in Senegal. The IRESSEF genomics laboratory  
233 contained all of the equipment for WGS sequencing using both Illumina and Oxford Nanopore  
234 Technologies sequencing. As the first cases of CHIKV were detected in Senegal on 17th July,  
235 Dr. Padane contacted the CLIMADE consortium for support on 17th August 2023, and the CERI  
236 and KRISP teams shipped the Illumina COVIDseq Test Assay and the Illumina Miseq v3 600  
237 cycle Reagent kit to Senegal on the 15 September 2023. In addition, the shipment also included  
238 the CHIKV primers for amplicon sequencing, which a local company in South Africa  
239 synthesized. The shipment was received at IRESSEF on the 18th September 2023. The primer  
240 scheme for CHIKV sequencing, and other arboviruses, is available on the CLIMADE GitHub  
241 protocols (<https://github.com/CERI-KRISP/CLIMADE/tree/master/Protocols/Arboviruses>). The  
242 COVIDSeq protocol was adapted to perform the library preparation, followed by sequencing on  
243 the Illumina Miseq platform. This protocol is available on the CLIMADE GitHub website, and it  
244 is described in detail by *Elaine Vieira Santos, Debora Glenda Lima de La Roque in protocols.io*  
245 ([https://protocols.io/view/pathogen-whole-genome-sequencing-multiplexed-](https://protocols.io/view/pathogen-whole-genome-sequencing-multiplexed-ampli-cgwbtzan)  
246 [ampli-cgwbtzan](https://protocols.io/view/pathogen-whole-genome-sequencing-multiplexed-ampli-cgwbtzan)). This protocol was modified to replace the DENV primers with those specific  
247 for CHIKV virus. The CLIMADE consortium provided advice and guidance during the library  
248 preparation and sequencing. The IRESSEF team was given guidance on the interpretation of the  
249 quality control and the calculations for the dilution of the final pooled libraries.

250  
251 The resulting genomic sequences have been made available on GISAID Epi-Arbo database<sup>13</sup>  
252 (EPI\_ISL\_18498014-EPI\_ISL\_18498039).

253  
254 *Chikungunya alignment and Phylogenetic Analysis*  
255 CHIKV reference dataset was retrieved from two primary databases: the National Centre for  
256 Biotechnology Information (NCBI) GenBank and the Bacterial and Viral Bioinformatics  
257 Resource Center (BV-BRC) web interface (<https://www.viprbrc.org>). Any duplicate entries  
258 were removed. Sequence genotyping was performed using the Genome Detective Chikungunya  
259 Typing Tool<sup>17,18</sup> (<https://www.genomedetective.com/app/typingtool/chikungunya/>). Sequences  
260 were then filtered for the West African Genotype (n = 115). The retrieved sequences were  
261 subjected to initial quality control to remove any unverified sequences and incomplete records  
262 (i.e geographical location and sampling dates; n=59). To ensure data uniformity and  
263 comparability, both newly generated CHIKV sequences (n = 31) and retrieved sequences (n =  
264 55) were aligned against the CHIKV reference genome (NC\_004162.2) using Nextalign v1.3.0  
265 alignment tool<sup>19</sup>.

266

267 Maximum likelihood trees were generated using IQ-TREE v 2.2.2.2<sup>20</sup> with 1000 bootstraps. The  
268 nucleotide substitution model TIM+F+I+R2 was selected according to Bayesian Information  
269 Criterion using Model Finder<sup>21</sup>. Molecular clock signal was evaluated using TempEst v1.5.3<sup>22</sup>.  
270 Potential outliers that violated the molecular clock assumption were removed prior to inferring  
271 time-scaled tree (TreeTime v 0.10.0<sup>23</sup>) using a molecular clock rate of  $2.845 \times 10^{-4}$  nucleotide  
272 substitutions per site per year.

273

### 274 *Phylodynamics Analysis*

275 Time-calibrated Bayesian phylogenetic trees were constructed to estimate the time of emergence  
276 (time to most common recent ancestor, TMRCA) of the transmission lineage circulating during  
277 the 2023 outbreak, and the associated effective population size. The latest release of BEAST  
278 (v.1.10.4)<sup>24,25</sup> was used along with the BEAGLE library v3.2.0<sup>26</sup> to improve computational  
279 speed. The dataset for the analyses described here contain sequences from the 2023 outbreak  
280 from this study (n = 26 after discarding outliers) and publicly available Senegal sequences  
281 collected in 2005 (n = 1)<sup>27</sup> and 2009 (n = 33)<sup>11</sup> to root the tree. After alignment of this dataset (as  
282 described above), the sequences were trimmed to only retain nucleotide positions 10001 to  
283 11293, corresponding to the E1 gene to be able to analyse what were originally whole genomes  
284 with E1 sequences from 2009. A relaxed clock model was applied for all analyses along with the  
285 HKY+G+I nucleotide substitution model. First, a constant population coalescent model  
286 assumption was used to estimate the TMRCA of two taxa groups: 2023 outbreak and 2009  
287 outbreak. Secondly, a skygrid<sup>28</sup> coalescent growth model with 64 grid points over the last 16  
288 years (corresponding to grid points every 4 months) was used for effective population size  
289 calculations. In this second analysis, a normal prior was applied to the TMRCA parameter of  
290 each taxa group, centered on the TMRCA estimated in the first analysis with a standard deviation  
291 of 1. The purpose was to obtain a more precise estimation of the TMRCA of each taxa group  
292 while simultaneously reconstructing the effective population size. All BEAST runs were set up  
293 in BEAUti<sup>29</sup>, a user-friendly program for building phylodynamic models and specifying MCMC  
294 settings for a BEAST analysis. Subsequently, all analyses were performed in two independent  
295 runs of ~500 million iterations each, or enough iterations to reach convergence. Convergence of  
296 MCMC chains was checked using Tracer v.1.7<sup>30</sup> and ~10% of initial chains was discarded as  
297 burn-in, or an appropriate number determined after visual inspection in Tracer<sup>31</sup>. Post-burnin  
298 samples were pooled to summarize parameter estimates using LogCombiner and  
299 TreeAnnotator<sup>24</sup>, including posterior probability of each parameter and maximum clade  
300 credibility (MCC) trees.

301

### 302 *Mutational Analysis*

303

304 We evaluated mutation frequencies in different CHIKV genotypes by utilising CHIKV-GLUE  
305 (<https://github.com/giffordlabcvr/CHIKV-GLUE>), a sequence-oriented resource for CHIKV  
306 developed using the GLUE software framework<sup>32</sup>. CHIKV-GLUE comprises a relational  
307 database capturing all CHIKV sequences accessible in GenBank up to November 1, 2023.  
308 Genotypes were assigning to CHIKV sequences using GLUE's maximum likelihood clade  
309 assignment (MLCA) algorithm<sup>32</sup>. Isolate-specific information, including country and year of  
310 sampling, as well as the isolation host species, were extracted from GenBank XML files via  
311 GLUE's 'GenBankPopulator' module. All sequences contained within CHIKV-GLUE are aligned  
312 to one another, with alignment information being stored in the relational database. Multiple



313 sequence alignments (MSAs) were created using a codon-aware alignment algorithm integrated  
314 into the GLUE framework and based on the Basic Local Alignment Search Tool (BLAST)<sup>33</sup>. For  
315 each CHIKV genotype, we constructed a dedicated MSA wherein the coordinate space is  
316 restricted to a genotype-specific reference sequence, annotated with the coordinates of individual  
317 CHIKV genome features. The accession numbers for constraining reference sequences are as  
318 follows: Asian, HM045813; ECSA, FJ445426; West African, HM045785. We calculated  
319 mutation frequencies in each genotype-specific MSA by using GLUE's command layer to  
320 interrogate the CHIKV-GLUE database. The 'amino acid frequency' command provided the  
321 frequency of all amino acids in a specified MSA, with coordinates referenced to specific genome  
322 features in the constraining reference sequence.

323

## 324 **Acknowledgement**

325 This work has been supported by CLIMADE (Climate Amplified Diseases and Epidemics), the  
326 National Institute of Health USA (U01 AI151698) for the United World Antivirus Research  
327 Network (UWARN), Abbott Laboratories and by NIH NIAID U01AI151698, United World  
328 Antiviral Research Network, part of the NIAID CRIED network and WANETAM (West African  
329 Network in Tuberculosis AIDS and Malaria). Data analysis support was provided by the Centre  
330 for Epidemic Response and Innovation (CERI) at Stellenbosch University. Reagents for WGS  
331 were provided by CERI's CLIMADE grant from the Rockefeller Foundation (HTH 017). The  
332 authors would like to express their gratitude to the Ministry of Health and to Drs. Mamadou  
333 Ndiaye, Boly Diop for their support. The authors would like to express their gratitude to the  
334 Kédougou District team particularly Dr Fodé Danfakha for significant contribution and  
335 assistance during this project. The authors would like to express their recognition to the  
336 IRESSEF team and CERI group for their commitment during this project and the patients for  
337 their participation in this work.

338

339

340

## 341 **References**

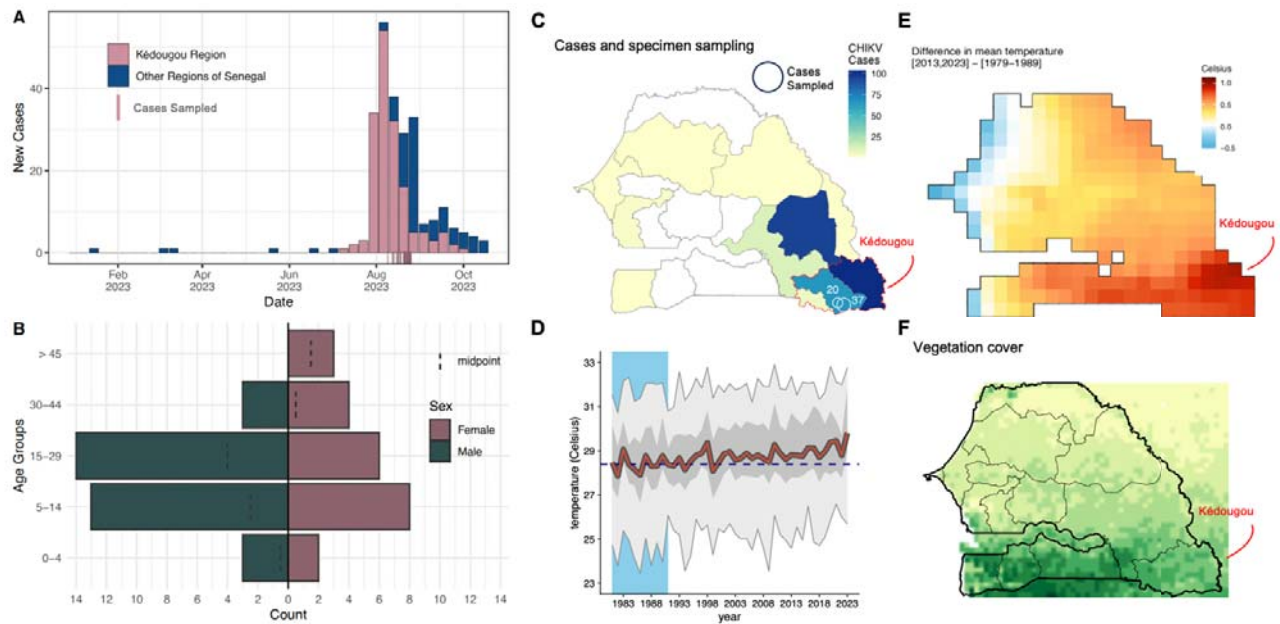
- 342 1. Ross, R. W. The Newala epidemic: III. The virus: isolation, pathogenic properties and  
343 relationship to the epidemic. *Journal of Hygiene* **54**, 177–191 (1956).
- 344 2. Roche, S. & Robin, Y. Human infections by chikungunya virus in Rufisque (Senegal),  
345 october-november, 1966. *Bull Soc Med Afr Noire Lang Fr* **12**, 490–496 (1967).
- 346 3. Althouse, B. M. *et al.* Role of monkeys in the sylvatic cycle of chikungunya virus in  
347 Senegal. *Nat Commun* **9**, 1046 (2018).

- 348 4. Diallo, D. *et al.* Concurrent amplification of Zika, chikungunya, and yellow fever virus in  
349 a sylvatic focus of arboviruses in Southeastern Senegal, 2015. *BMC Microbiol* **20**, 181  
350 (2020).
- 351 5. de Souza, W. M. *et al.* Spatiotemporal dynamics and recurrence of chikungunya virus in  
352 Brazil: an epidemiological study. *Lancet Microbe* **4**, e319–e329 (2023).
- 353 6. Beesoon, S., Funkhouser, E., Kotea, N., Spielman, A. & Robich, R. M. Chikungunya  
354 Fever, Mauritius, 2006. *Emerg Infect Dis* **14**, 337–338 (2008).
- 355 7. Kariuki Njenga, M. *et al.* Tracking epidemic Chikungunya virus into the Indian Ocean  
356 from East Africa. *Journal of General Virology* **89**, 2754–2760 (2008).
- 357 8. Flahault, A. *et al.* Maladies infectieuses émergentes□: le cas de l'épidémie de  
358 chikungunya dans l'Océan indien (2005-2006). *Bull Acad Natl Med* **191**, 113–128 (2007).
- 359 9. Sissoko, D. *et al.* Seroprevalence and Risk Factors of Chikungunya Virus Infection in  
360 Mayotte, Indian Ocean, 2005-2006: A Population-Based Survey. *PLoS One* **3**, e3066  
361 (2008).
- 362 10. Cohen, J. A chikungunya vaccine is likely to get approved. Who will get it? *Science*  
363 (1979) **382**, 503–504 (2023).
- 364 11. Sow, A. *et al.* Chikungunya Outbreak in Kedougou, Southeastern Senegal in 2009–2010.  
365 *Open Forum Infect Dis* **5**, (2018).
- 366 12. Diallo, D. *et al.* Landscape Ecology of Sylvatic Chikungunya Virus and Mosquito Vectors  
367 in Southeastern Senegal. *PLoS Negl Trop Dis* **6**, e1649 (2012).
- 368 13. Wallau, G. L. *et al.* Arbovirus researchers unite: expanding genomic surveillance for an  
369 urgent global need. *Lancet Glob Health* **11**, e1501–e1502 (2023).

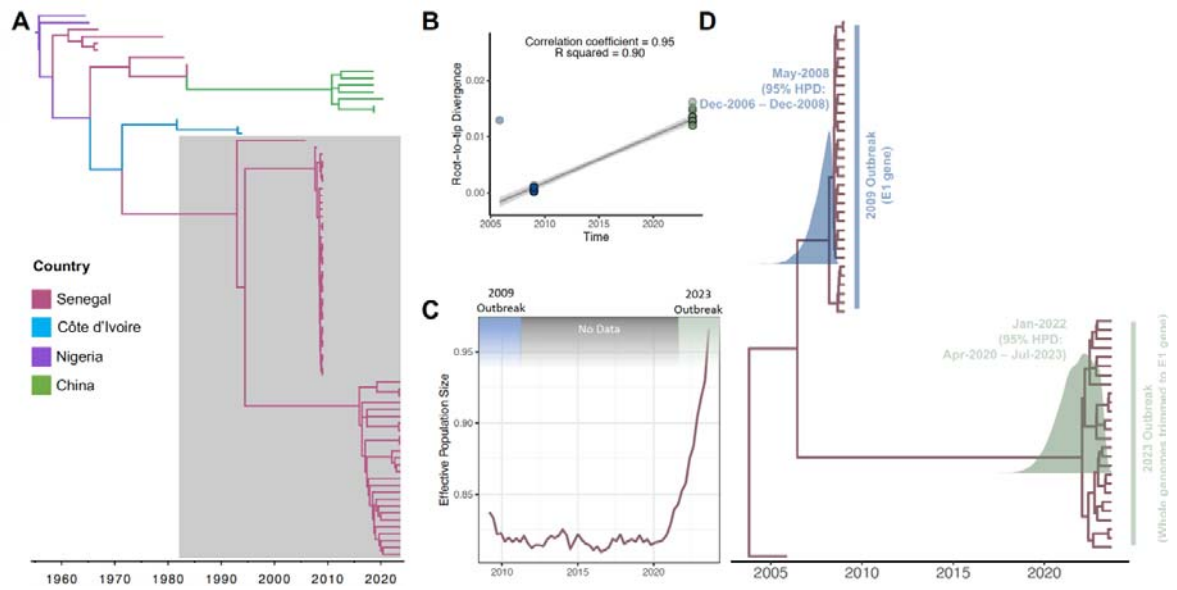
- 370 14. Russo, G., Subissi, L. & Rezza, G. Chikungunya fever in Africa: a systematic review.  
371 *Pathog Glob Health* **114**, 136–144 (2020).
- 372 15. Kraemer, M. U. G. *et al.* Past and future spread of the arbovirus vectors *Aedes aegypti* and  
373 *Aedes albopictus*. *Nat Microbiol* **4**, 854–863 (2019).
- 374 16. Feng, G. *et al.* Metagenomic Analysis of Togaviridae in Mosquito Viromes Isolated From  
375 Yunnan Province in China Reveals Genes from Chikungunya and Ross River Viruses.  
376 *Front Cell Infect Microbiol* **12**, (2022).
- 377 17. Vilsker, M. *et al.* Genome Detective: an automated system for virus identification from  
378 high-throughput sequencing data. *Bioinformatics* **35**, 871–873 (2019).
- 379 18. Fonseca, V. *et al.* A computational method for the identification of Dengue, Zika and  
380 Chikungunya virus species and genotypes. *PLoS Negl Trop Dis* **13**, e0007231 (2019).
- 381 19. Aksamentov, I., Roemer, C., Hodcroft, E. & Neher, R. Nextclade: clade assignment,  
382 mutation calling and quality control for viral genomes. *J Open Source Softw* **6**, 3773  
383 (2021).
- 384 20. Nguyen, L.-T., Schmidt, H. A., von Haeseler, A. & Minh, B. Q. IQ-TREE: A Fast and  
385 Effective Stochastic Algorithm for Estimating Maximum-Likelihood Phylogenies. *Mol*  
386 *Biol Evol* **32**, 268–274 (2015).
- 387 21. Neath, A. A. & Cavanaugh, J. E. The Bayesian information criterion: background,  
388 derivation, and applications. *WIREs Computational Statistics* **4**, 199–203 (2012).
- 389 22. Rambaut, A., Lam, T. T., Max Carvalho, L. & Pybus, O. G. Exploring the temporal  
390 structure of heterochronous sequences using TempEst (formerly Path-O-Gen). *Virus Evol*  
391 **2**, vew007 (2016).

- 392 23. Sagulenko, P., Puller, V. & Neher, R. A. TreeTime: Maximum-likelihood phylodynamic  
393 analysis. *Virus Evol* **4**, (2018).
- 394 24. Drummond, A. J. & Rambaut, A. BEAST: Bayesian evolutionary analysis by sampling  
395 trees. *BMC Evol Biol* **7**, 214 (2007).
- 396 25. Suchard, M. A. *et al.* Bayesian phylogenetic and phylodynamic data integration using  
397 BEAST 1.10. *Virus Evol* **4**, vey016 (2018).
- 398 26. Baele, G., Ayres, D. L., Rambaut, A., Suchard, M. A. & Lemey, P. High-Performance  
399 Computing in Bayesian Phylogenetics and Phylodynamics Using BEAGLE. in 691–722  
400 (2019). doi:10.1007/978-1-4939-9074-0\_23.
- 401 27. Volk, S. M. *et al.* Genome-Scale Phylogenetic Analyses of Chikungunya Virus Reveal  
402 Independent Emergences of Recent Epidemics and Various Evolutionary Rates. *J Virol*  
403 **84**, 6497–6504 (2010).
- 404 28. Hill, V. & Baele, G. Bayesian Estimation of Past Population Dynamics in BEAST 1.10  
405 Using the Skygrid Coalescent Model. *Mol Biol Evol* **36**, 2620–2628 (2019).
- 406 29. Drummond, A. J., Suchard, M. A., Xie, D. & Rambaut, A. Bayesian phylogenetics with  
407 BEAUti and the BEAST 1.7. *Mol Biol Evol* **29**, 1969–1973 (2012).
- 408 30. Rambaut, A., Drummond, A. J., Xie, D., Baele, G. & Suchard, M. A. Posterior  
409 summarization in Bayesian phylogenetics using Tracer 1.7. *Syst Biol* **67**, 901–904 (2018).
- 410 31. Rambaut, A., Drummond, A. J., Xie, D., Baele, G. & Suchard, M. A. Posterior  
411 Summarization in Bayesian Phylogenetics Using Tracer 1.7. *Syst Biol* **67**, 901–904  
412 (2018).
- 413 32. Singer, J. B., Thomson, E. C., McLauchlan, J., Hughes, J. & Gifford, R. J. GLUE: a  
414 flexible software system for virus sequence data. *BMC Bioinformatics* **19**, 532 (2018).

- 415 33. Camacho, C. *et al.* BLAST+: architecture and applications. *BMC Bioinformatics* **10**, 421  
416 (2009).  
417



**Figure 1: Spatiotemporal distribution of Chikungunya epidemiology and ecology in Senegal.** A) Epidemiological curve of cases in Senegal and Kédougou region in 2023 and time-frame of case sampling. B) Demographic distribution of sampled cases. C) Map of CHIKV cases in Senegal in 2023, with the Kédougou region outlined in red. Sampling was performed in the Kédougou district, from Ndiormi (n=37) and Bandafassi (n=20). D) Increasing temperature trend in Senegal; the blue dashed line is the mean of the first 10 years of data (1979-1989, blue area), the red line is the annual mean, dark gray is the 50% percentile, and the light gray area are the minimum and maximum temperatures. E) Difference in mean temperature between the reference period of the first panel and the mean of the past 10 years (2013-2023). F) Vegetation cover (NDVI) in Senegal. Data is from 2018.



**Figure 2.** A) Timed maximum likelihood phylogeny of all West African genotype sequences of CHIKV. B) Root-to-tip regression containing sequences from the clade highlighted in gray in the previous panel, containing public CHIKV sequences from 2005, 2009, and newly sequenced ones from 2023. C) Effective population density estimates for CHIKV in Senegal. D) Maximum Clade Credibility (MCC) phylogenetic tree of 2005, 2009 and 2023 sequences, trimmed to E1 gene, of CHIKV in Senegal, showing the posterior distributions for the root node age of the 2009 and 2023 clades, with specified 95% HPD.