

# 1 **Fibrosis and liver inflammation are key regulators of $\alpha$ 1-acid** 2 **glycoprotein fucosylation**

3 Carlos Oltmanns<sup>1,2,3,4</sup>, Birgit Bremer<sup>1,3</sup>, Laura Kusche<sup>1</sup>, Per Stål<sup>6</sup>, Robin Zenlander<sup>7</sup>,  
4 Jan Tauwaldt<sup>1,2,3,4</sup>, Ingvar Rydén<sup>8</sup>, Peter Pålsson<sup>\*8</sup>, Markus Cornberg<sup>\*1,2,3,4,5</sup>, Heiner  
5 Wedemeyer<sup>\*1,3,5</sup>

6

7 <sup>1</sup> Department of Gastroenterology, Hepatology and Endocrinology, Hannover Medical School  
8 (MHH), Hannover, Germany

9 <sup>2</sup> Centre for Individualised Infection Medicine (CiiM), a joint venture between the Helmholtz  
10 Centre for Infection Research (HZI) and Hannover Medical School (MHH). Hannover,  
11 Germany

12 <sup>3</sup> Cluster of Excellence Resolving Infection Susceptibility (RESIST; EXC 2155), Hannover  
13 Medical School, Hannover, Germany

14 <sup>4</sup> TWINCORE, a joint venture between the Helmholtz-Centre for Infection Research (HZI) and  
15 the Hannover Medical School (MHH). Hannover, Germany

16 <sup>5</sup> German Centre for Infection Research (DZIF), partner site Hannover-Braunschweig,  
17 Germany

18 <sup>6</sup> Department of Medicine, Huddinge, Karolinska Institutet; and Division of Hepatology,  
19 Department of Upper GI diseases, Karolinska University Hospital; Stockholm, Sweden

20 <sup>7</sup> Department of Clinical Chemistry, Karolinska University Hospital; Department of Laboratory  
21 Medicine, Karolinska Institutet; and Department of Medicine, Huddinge, Karolinska Institutet;  
22 Stockholm, Sweden

23 <sup>8</sup> Department of Biomedical and Clinical Sciences, Linköping University, Linköping, Sweden

24 \*contributed equally

25

26

## 27 **Abstract**

28 **Background and Aims:** There is an urgent need for new high-quality markers in the  
29 early detection of hepatocellular carcinoma (HCC). Åström et al. suggested that S2-  
30 bound  $\alpha$ 1-acid glycoprotein (AGP) might be a promising marker. Consequently, we  
31 evaluated S2-bound AGP for a predictive advantage in the early detection of HCC.

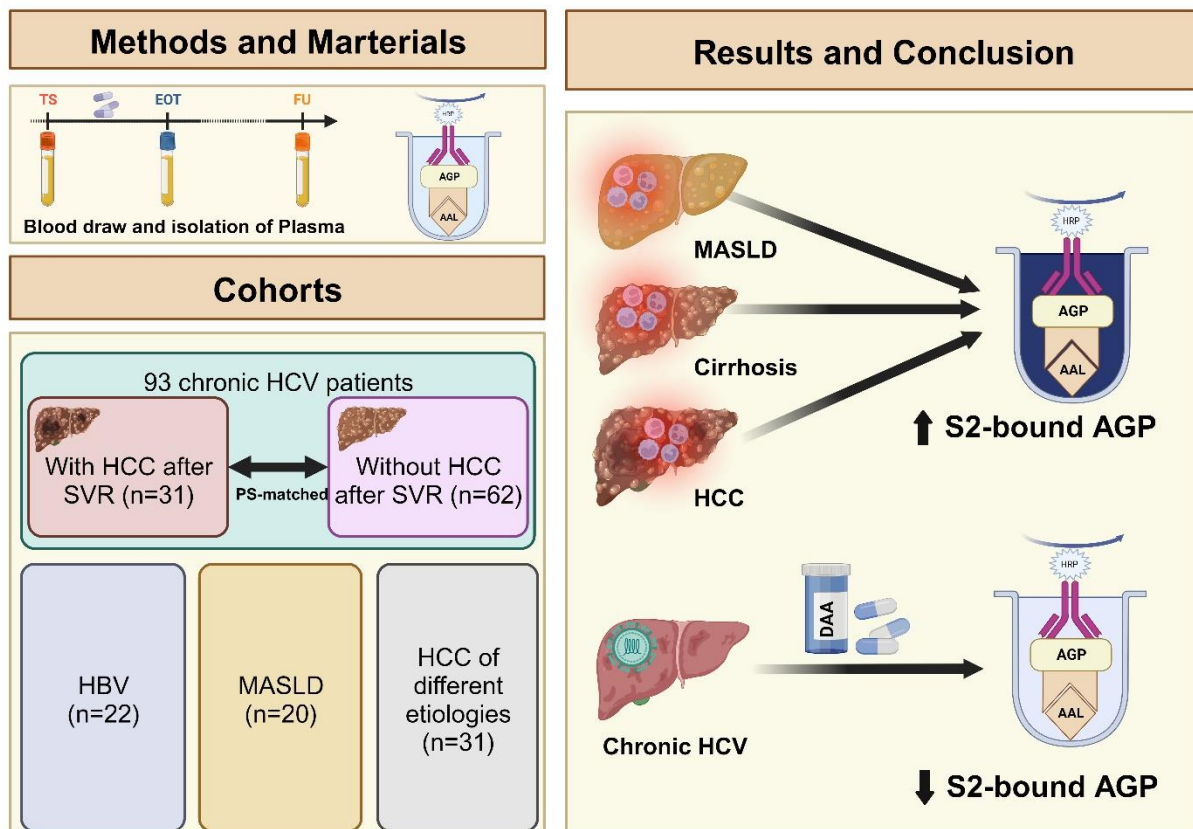
32 **Methods:** In a retrospective case-control study of patients chronically infected with  
33 hepatitis C virus (HCV) and treated with direct-acting antiviral agents (n=93), we  
34 measured S2-bound AGP using the HepaCheC® ELISA kit (Glycobond AB, Linköping,  
35 SE) at treatment start, end of treatment and follow-up (maximum: 78 months). Patients  
36 were retrospectively propensity score matched (1:2). 31 patients chronically infected  
37 with HCV developed HCC after sustained virological response while 62 did not. In  
38 addition, samples of HBV, MASLD and HCC from different etiologies patients were  
39 measured.

40 **Results:** S2-bound AGP elevation in HCC patients was confirmed. However, we did  
41 not observe a predictive advantage of S2-bound AGP in early detection of HCC during  
42 treatment and follow-up. Interestingly, S2-bound AGP levels correlated with aspartate  
43 aminotransferase ( $p=0.56$ ,  $p=9.5 \times 10^{-15}$ ) and liver elastography ( $\rho=0.67$ ,  $p=2.2 \times 10^{-16}$ ).  
44 Of note, S2-bound AGP decreased in patients chronically infected with HCV after  
45 treatment-induced clearance of HCV.

46 **Conclusion:** Fibrosis and liver inflammation are key regulators in the fucosylation of  
47 AGP. The potential role of S2-bound AGP as a novel tumor marker requires further  
48 investigation.

49 **Key words:** S2-bound AGP, Surveillance, HCC, Biomarker, HCV, HBV, MASLD,  
50 Cancer, AST, Elastography

## 51 Graphical abstract



52

## 53 Author contributions:

54 HW conceived the project and coordinated the analyses. CO, BB and HW designed  
55 the experiments. CO, LK, JT, PP, IR, MC and HW drafted the manuscript. MC, PS, RZ  
56 and HW were involved in recruitment of patients. JT was involved in creation of the  
57 clinical cohort and BB helped acquiring the data. CO acquired and analyzed the data  
58 supervised by HW. All authors read and approved the manuscript.

## 59 Abbreviations:

60 A1AT: Alpha-1 antitrypsin, AFP: Alpha-fetoprotein, AFP-L3: Lectin-reactive alpha-  
61 fetoprotein, AGP:  $\alpha$ 1-acid glycoprotein, ALT: Alanine amino transferase, AST:  
62 Aspartate aminotransferase, DAA: Direct-acting antiviral agents, DCP: Des-gamma-  
63 carboxy prothrombin, GALAD: Gender, age, AFP-L3, AFP and DCP, HBV: Hepatitis B  
64 virus, HCC: Hepatocellular carcinoma, HCV: Hepatitis C virus, MASLD: Metabolic-  
65 dysfunction associated steatotic liver disease, PS: Propensity score, SVR: Sustained  
66 virological response

## 67 Introduction

68 Hepatocellular carcinoma (HCC) is one of the leading causes of cancer-associated  
69 deaths worldwide [1]. We know that early detection of HCC can improve survival [2]  
70 [3]. Therefore, there is an urgent need to improve early detection [4]. As of today,  
71 ultrasound sonography with or without AFP is the gold standard for HCC surveillance  
72 [5]. Additional markers as AFP, AFP-L3 and DCP can improve sensitivity and  
73 specificity of HCC diagnosis. However, they do not allow an earlier diagnosis and their  
74 use has not been associated with an improved outcome [6] [7] [8].

75 Through the last decades, several groups showed that cancer development and  
76 severe liver disease affect serum glycoproteins [9]. Since AFP, AFP-L3 and DCP fall  
77 short of predicting HCC effectively, other glycoproteins have been studied extensively.  
78 Comunale et al. studied the fucosylation of alpha-1-antitrypsin (A1AT) and  
79 demonstrated that it is a potential biomarker candidate [10]. In contrast, Asazawa et  
80 al. studied fucosylated haptoglobin and showed a potentially higher sensitivity in  
81 detecting HCC than AFP alone [11]. Despite these efforts, none of these markers could  
82 meet the criteria for a high-quality predictive HCC marker and make it to the clinical  
83 stage.

84 Therefore, Åström et al. aimed to find a new HCC biomarker for early detection of HCC.  
85 They suggested that a reverse lectin based assay, measuring multifucosylated  
86 oligosaccharides, could differentiate between HCC and cirrhotic or non-cirrhotic  
87 hepatitis C virus (HCV) patients [12]. However, it remains unclear, whether S2-bound  
88  $\alpha$ 1-acid glycoprotein (AGP) shows a predictive advantage and whether S2-bound AGP  
89 elevation is HCC specific or driven by inflammation and fibrosis.

90 We evaluated S2-bound AGP in a longitudinal retrospective case-control study  
91 consisting of patients, who underwent treatment of chronic hepatitis C virus infection  
92 with direct-acting antiviral agents (DAA). In addition, we demonstrate how liver  
93 inflammation and fibrosis affect S2-bound AGP levels in a real world setting. In the  
94 end, this study offers the opportunity to understand how inflammation and fibrosis  
95 might play a fundamental role in the fucosylation of glycoproteins.

96

## 97 **Materials and Methods**

### 98 ***Study population and design***

99 We collected plasma samples from overall 93 patients chronically infected with  
100 hepatitis C virus. All patients were treated with DAAs since January 1, 2014. Thirty-  
101 one patients developed HCC after start of therapy with DAAs (HCV HCC cohort). In  
102 contrast, 62 matched controls did not develop liver cancer during the follow-up period  
103 (HCV Control cohort). All patients achieved sustained virological response (SVR) and  
104 the majority of patients suffered from cirrhosis. Patients that were lost to follow-up or  
105 did not achieve SVR (n=200), patients that did not have data available for the matching  
106 variables (n=26) and patients that were excluded during the matching process (n=480)  
107 were excluded from further analysis (Figure 1).

108 We took samples at therapy start, end of treatment and at the time of HCC diagnosis  
109 (HCV HCC) or at the last available visit (HCV Control). All samples were collected in  
110 the outpatient clinic of Hannover Medical School between January 1, 2014 and March  
111 31, 2021. We received written consent from all patients in advance.

112 In addition, we measured samples from different liver diseases independent of HCV  
113 infection. Three additional groups were measured, including patient chronically  
114 infected with hepatitis B virus (HBV) (n=22), patients with metabolic dysfunction-  
115 associated steatotic liver disease (MASLD) (n=20) and patients with HCC of different  
116 etiologies (n=31) (Suppl. table 1).

### 117 ***Validation cohort***

118 To validate our findings we analyzed a cohort of 173 patients from Sweden suffering  
119 from severe liver disease. One-hundred and two patients were diagnosed with liver  
120 cirrhosis whereas 71 patients were diagnosed with HCC. Etiologies of disease varied  
121 and most patients developed severe liver disease based on an HCV infection and/or  
122 high alcohol consumption. The HCC patients were either not treated for HCC (n=25),  
123 currently under treatment (n=23) or had completed the treatment (n=23).

### 124 ***Cohort matching***

125 We matched our 31 HCV HCC patients in a 1:2 propensity score (PS) matching with  
126 62 HCV Control patients using R Statistical Software (Version 4.0.5.) and the MatchIt  
127 package [13]. In order to receive a robustly matched control cohort we chose nearest

128 neighbor matching as the method of matching [14]. Our matching variables included  
129 sex, age, transient elastography, platelets and follow-up length.

### 130 ***Sample preparation***

131 Plasma was processed and then stored at a maximum temperature of -20° Celsius.  
132 We measured all samples using the HepaCheC® ELISA kit (Glycobond AB, Linköping,  
133 SE). The assay measures S2-bound AGP based on a reverse lectin ELISA [12]. We  
134 measured all samples according to the standard protocol of the manufacturer.

### 135 ***Statistical analysis***

136 We analyzed our data using R Statistical Software (Version 4.0.5.) and GraphPad  
137 Prism (Version 8.3.1.). Therefore, we created all graphs with the packages *ggplot2* and  
138 *ggpubr* or within GraphPad Prism. As statistical test, we performed “Mann-Whitney-U  
139 test” for comparison of independent sample groups. In addition, we calculated all  
140 correlations using Spearman’s rank correlation since the investigated correlations were  
141 non-linear. The graphical abstract was created using Biorender.com.

142

## 143 **Results**

### 144 ***Characteristics of the study cohort***

145 Patient characteristics are shown in Table 1. In brief, patients chronically infected with  
146 HCV were middle-aged (HCV HCC: 59, HCV Control: 58.1) and mainly men (HCV  
147 HCC: 83.9% men, HCV Control 85.5% men). After PS matching, there were no  
148 differences between both groups regarding Child-Pugh score, HCV genotype, HCV-  
149 RNA, body mass index (BMI), platelets, aspartate aminotransferase (AST), alanine  
150 amino transferase (ALT), and albumin (Table 1A).

151 The HCV HCC group developed HCC after a median time of 28 months  
152 (Supplementary Figure 1), whereas the Control group did not develop HCC during  
153 follow-up (maximum follow-up: 78 months).

154 MASLD patients were overall older (MASLD: 67.6), whereas HBV and independent  
155 HCC patients showed younger age (HBV: 44.0, HCC: 50.1). Sex was equally  
156 distributed in the chronic HBV patients, MASLD patients were dominantly female (65%  
157 female), while HCC patients were mainly men (80.6%). AST and ALT were lower in  
158 the HCC patients than in the patients chronically infected with HCV but overall higher



159 than in the HBV and MASLD patients. Elastography was similar in chronic HCV and  
160 HCC patients (Table 1B). Different etiologies of the independent HCC patients are  
161 presented in Supplementary Table 1.

### 162 ***S2-bound AGP is elevated in HCC and chronic HCV patients***

163 Confirming previous results, S2-bound AGP was increased in independent HCC  
164 patients with 16/31 measured samples above the proposed cut-off (=1). In contrast,  
165 S2-bound AGP was not elevated in chronic HBV (22/22 below cut-off) and MASLD  
166 (18/20 below cut-off) patients. We observed a highly significant difference between  
167 HCC patients and HBV or MASLD patients (HCC vs. HBV  $p < 0.0001$ , HCC vs. MASLD  
168  $p = 0.0005$ ). In addition, MASLD patients showed significantly higher S2-bound AGP  
169 levels than the HBV group ( $p = 0.015$ ).

170 Interestingly, patients chronically infected with HCV had highest S2-bound AGP levels,  
171 significantly higher than in the HBV ( $p < 0.0001$ ) and MASLD group ( $p < 0.0001$ ). We did  
172 not detect a significant difference in S2-bound AGP levels between HCC and chronic  
173 HCV patients. Overall, 49/93 patients chronically infected with HCV showed increased  
174 S2-bound AGP levels at baseline, which is similar to the HCC group (Figure 2).

### 175 ***S2-bound AGP correlates with AST and elastography***

176 We next investigated to what extent markers of liver inflammation and fibrosis may  
177 correlate with S2-bound AGP. Indeed, both AST ( $\rho = 0.56$ ,  $p = 9.5 \times 10^{-15}$ ) and  
178 elastography ( $\rho = 0.67$ ,  $p = 2.2 \times 10^{-16}$ ) correlated with S2-bound AGP. Of note, a similar  
179 trend was found in subgroups including the patients chronically infected with HCV  
180 (AST:  $\rho = 0.3$ ,  $p = 0.0047$ , elastography:  $\rho = 0.36$ ,  $p = 0.00039$ ) and HCC patients (AST:  
181  $\rho = 0.42$ ,  $p = 0.022$ ) (Figure 3, Supplementary Figure 2).

### 182 ***S2-bound AGP correlates with AST and ALT in the validation cohort***

183 To validate our findings we analyzed whether we could observe similar trends in the  
184 cohort of Swedish patients suffering from liver disease. Also here, we detected a  
185 correlation of S2-bound AGP with AST ( $\rho = 0.35$ ,  $p = 3.1 \times 10^{-6}$ ). In addition, there was  
186 also a weak correlation with ALT ( $\rho = 0.21$ ,  $p = 6.2 \times 10^{-3}$ ) (Figure 4).

187 ***S2-bound AGP decreases in patients chronically infected with HCV after***  
188 ***treatment.***

189 Building on top of these results, we analyzed the patients chronically infected with HCV  
190 longitudinally, measuring S2-bound AGP levels at baseline, at end of antiviral  
191 treatment and at long-term follow-up. The HCC and Control group both showed  
192 increased S2-bound AGP levels at baseline. Furthermore, S2-bound AGP levels  
193 decreased over time after successful treatment of the chronic HCV infection. We did  
194 not detect any significant difference between the patients that developed HCC after  
195 SVR and the patients from the Control group that did not develop HCC (HCC detection:  
196  $p=0.10$ ). This hold true during the complete course of treatment and follow-up (Figure  
197 5).

198

199 **Discussion**

200 Despite decades of research effort, there is still a desperate need for predictive tumor  
201 markers to diagnose HCC early and with high precision [5]. In this study, we followed  
202 the hypothesis, that S2-bound AGP could be useful as a novel biomarker for early  
203 detection of HCC. Indeed, we confirmed that S2-bound AGP levels are elevated in half  
204 of the patients diagnosed with HCC, which is overall higher than traditional biomarkers,  
205 including AFP. However and surprisingly, the frequency of S2-bound elevation was  
206 similar in patients chronically infected with HCV. This suggests that non-specific  
207 inflammation and fibrosis may drive S2-bound AGP elevation. Therefore, S2-bound  
208 AGP is not a suitable candidate to predict development of hepatocellular carcinoma,  
209 specifically in patients that achieved SVR after chronic HCV infection.

210 The concentration of S2-bound AGP was associated with AST levels in two  
211 independent cohorts of patients. Although the association was evident in HCV, it was  
212 not statistically significant in the HBV or MASLD subgroups, where the levels of AST  
213 were lower than in the HCV group. However, we do not believe that the association of  
214 S2-bound AGP and AST is a HCV specific effect, nor do we believe that HCV infection  
215 or replication are specific drivers of AGP fucosylation. Interestingly, there was a  
216 significant reduction of S2-bound AGP levels after patients chronically infected with  
217 HCV successfully cleared the virus. This is in line with previous reports of traditional  
218 tumor markers that are also decreasing after SVR [15] [16]. However, this decline was



219 much more prominent in our data on S2-bound AGP, suggesting a direct effect of  
220 chronic liver inflammation on fucosylation of AGP. Subsequently, most patients  
221 showed normalized liver enzymes and decreased levels of S2-bound AGP at follow-  
222 up compared to baseline.

223 In addition, the entity of liver disease may also play an important role in the assessment  
224 of new biomarkers. Whereas in patients chronically infected with HCV we observed  
225 high levels of S2-bound AGP, there were significantly lower levels in patients that were  
226 chronically infected with HBV or suffered from MASLD. At the same time, we observed  
227 lower levels of inflammation indicated by AST and ALT in these patients. However, our  
228 results are in line with previous findings on another tool for early detection of HCC, the  
229 GALAD score. Best et al. provided evidence that the entity of liver disease influences  
230 specificity and sensitivity of the GALAD score [17].

231 In the longitudinal cohort of patients chronically infected with HCV, S2-bound AGP did  
232 not show a diagnostic advantage in early detection of the HCC. Based on a previous  
233 study, Åström et al. suggested that S2-bound AGP could be specific for HCC [12].  
234 While we see S2-bound AGP elevation in HCC patients in general, we could not see a  
235 significant difference between patients chronically infected with HCV and recently  
236 detected HCC and the HCV control group. Liver enzymes were elevated in the HCC  
237 patients of different entities too, leading us to the conclusion that general inflammation  
238 and fibrosis of the liver may influence previous study results.

239 Our results underline the challenges we are still facing in development of a high-quality  
240 predictive tumor marker in the HCC field [18]. All previous studies have failed to  
241 produce markers that can detect HCC reliably [19] [20]. Recently, Tayob et al. showed  
242 in an American Phase 3 biomarker study that GALAD indeed increases sensitivity for  
243 early detection of HCC but goes along with a significant false-positive rate of around  
244 25 percent [8]. Therefore, it may be worth considering new approaches, such as using  
245 patients' biological age as a predictive tool [21]. Finally, screening and evaluation of  
246 more promising candidates but also combination of different approaches might  
247 improve results for biomarker studies in the future.

248 Limits of our study include the relatively small number of patients in a retrospective  
249 study design from different cohorts. On the contrary, we were able to choose a well-  
250 matched cohort, allowing us to compare patients chronically infected with HCV that  
251 developed HCC to those that did not develop cancer. The close follow-up of patients

252 after SVR allowed us to analyze pre-HCC-diagnosis-samples, bolstering our ability to  
253 evaluate, whether there is a predictive advantage of S2-bound AGP.

254 S2-bound AGP is affected by liver inflammation and does not predict HCC reliably on  
255 its own. Since the challenge of early HCC detection seems to be more complex, future  
256 research efforts should focus even more on a combination of markers [18]. Pattern  
257 recognition in multi-omics approaches and high throughput technologies in patients  
258 that develop HCC after chronic viral infection might play an important role. Fibrosis and  
259 inflammation of the liver influence S2-bound AGP and may influence fucosylation in  
260 other markers as well. Therefore, future studies on fucosylation should consider both  
261 to discriminate better between HCC-specific and non-specific signals.

262

## 263 **Compliance with Ethical Standards**

### 264 **Informed consent and approval by the local ethics committee**

265 This article does not contain any studies with animals performed by any of the authors.

266 The study protocol conformed to the ethical guidelines of the Declaration of Helsinki  
267 and the local ethics committee approved this study a priori (No. 9474\_BO\_K\_2020).

268 Informed consent was obtained from all individual participants included in the study.

### 269 **Conflicts of interest:**

270 MC reports personal fees from Abbvie, personal fees from Falk Foundation, personal  
271 fees from Gilead, personal fees from GlaxoSmithKline, personal fees from Jansen-  
272 Cilag, personal fees from Merck/MSD, personal fees from Novartis, personal fees from  
273 Roche, personal fees from Spring Bank Pharmaceuticals, and personal fees from  
274 Swedish Orphan Biovitrum, outside the submitted work

275 HW reports grants/research support and personal fees from Abbvie, Biotest AG and  
276 Gilead. He received personal fees from Aligos Therapeutics, Altimune, Astra Zeneca,  
277 Bristol-Myers-Squibb, BTG Pharmaceuticals, Dicerna Pharmaceuticals, Enanta  
278 Pharmaceuticals, Dr. Falk Pharma, Falk Foundation, Intercept Pharmaceuticals,  
279 Janssen, Merck KGaA, MSD Sharp & Dohme GmbH, MYR GmbH, Norgine, Novartis,  
280 Pfizer Pharma GmbH, Roche and Vir Biotechnology, outside the submitted work.

281 PS has received speaker fees from Merck Sharp & Dohme, Eisai, Roche and Albireo.

282 IR and PP are unpaid board members of Glycobond AB.

283 LK, JT, BB, CO and RZ have nothing to disclose.

### 284 **Financial support statement:**

285 This project is part of project A5 in the Collaborative Research Center 900 - Microbial  
286 Persistence and its Control. The Swedish Cancer Society supported PS. The project  
287 was partly financed by grants from Glycobond AB. CO was supported by a grant from  
288 the KlinStrucMed program of Hannover Medical School, funded by the Else Kröner-  
289 Fresenius Foundation.

290

## 291 **References**

- 292 [1] Sung H, Ferlay J, Siegel RL, Laversanne M, Soerjomataram I, Jemal A et al. Global  
293 Cancer Statistics 2020: GLOBOCAN Estimates of Incidence and Mortality Worldwide  
294 for 36 Cancers in 185 Countries. *CA: a cancer journal for clinicians* 2021; 71:209-249.
- 295 [2] Singal A G, Zhang E, Narasimman M, Rich NE, Waljee AK, Hoshida Y et al. HCC  
296 surveillance improves early detection, curative treatment receipt, and survival in  
297 patients with cirrhosis: A meta-analysis. *Journal of hepatology* 2022; 77:128-139.
- 298 [3] Singal A G, Pillai A, Tiro J. Early Detection, Curative Treatment, and Survival Rates  
299 for Hepatocellular Carcinoma Surveillance in Patients with Cirrhosis: A Meta-analysis.  
300 *PLoS Medicine* 2014; 11:e1001624.
- 301 [4] Nault J, Villanueva A. Biomarkers for Hepatobiliary Cancers. *Hepatology* 2020;  
302 73:115.
- 303 [5] Singal A G, Lampertico P, Nahon P. Epidemiology and surveillance for  
304 hepatocellular carcinoma: New trends. *Journal of hepatology* 2020; 72:250-261.
- 305 [6] Lersritwimanmaen P, Nimanong S. Hepatocellular Carcinoma Surveillance: Benefit  
306 of Serum Alfa-fetoprotein in Real-world Practice. *Euroasian Journal of Hepato-*  
307 *Gastroenterology* 2018; 8:83-87.
- 308 [7] Tzartzeva K, Obi J, Rich NE, Parikh ND, Marrero JA, Yopp A et al. Surveillance  
309 Imaging and Alpha Fetoprotein for Early Detection of Hepatocellular Carcinoma in  
310 Patients With Cirrhosis: A Meta-analysis. *Gastroenterology (New York, N.Y. 1943)*  
311 2018; 154:1706-1718.e1.
- 312 [8] Tayob N, Kanwal F, Alsarraj A, Hernaez R, El-Serag HB. The Performance of AFP,  
313 AFP-3, DCP as Biomarkers for Detection of Hepatocellular Carcinoma (HCC): A Phase  
314 3 Biomarker Study in the United States. *Clinical Gastroenterology and Hepatology*  
315 2023; 21:415-423.e4.
- 316 [9] Naitoh A, Aoyagi Y, Asakura H. Highly enhanced fucosylation of serum  
317 glycoproteins in patients with hepatocellular carcinoma. *Journal of gastroenterology*  
318 *and hepatology* 1999; 14:436-445.
- 319 [10] Comunale M A, Rodemich-Betesh L, Hafner J, Wang M, Norton P, Di Bisceglie  
320 AM et al. Linkage Specific Fucosylation of Alpha-1-Antitrypsin in Liver Cirrhosis and  
321 Cancer Patients: Implications for a Biomarker of Hepatocellular Carcinoma. *PLoS ONE*  
322 2010; 5:e12419.
- 323 [11] Asazawa H, Kamada Y, Takeda Y, Takamatsu S, Shinzaki S, Kim Y et al. Serum  
324 fucosylated haptoglobin in chronic liver diseases as a potential biomarker of  
325 hepatocellular carcinoma development. *Clinical Chemistry and Laboratory Medicine*  
326 (CCLM) 2015; 53:95-102.

- 327 [12] Åström E, Stål P, Zenlander R, Edenvik P, Alexandersson C, Haglund M et al.  
328 Reverse lectin ELISA for detecting fucosylated forms of  $\alpha$ 1-acid glycoprotein  
329 associated with hepatocellular carcinoma. PLoS ONE 2017; 12:e0173897.
- 330 [13] Ho D E, Imai K, King G, Stuart EA. MatchIt: Nonparametric Preprocessing for  
331 Parametric Causal Inference. Journal of statistical software 2011; 42.
- 332 [14] Randolph J J, Austin KF, Manuel K, Balloun JL, Randolph JJ, Falbe K; et al. A  
333 Step-by-Step Guide to Propensity Score Matching in R. Practical Assessment,  
334 Research, and Evaluation 2014; 19.
- 335 [15] Fouad R, Elsharkawy A, Abdel Alem S, El Kassas M, Alboraie M, Sweedy A et al.  
336 Clinical impact of serum  $\alpha$ -fetoprotein and its relation on changes in liver fibrosis in  
337 hepatitis C virus patients receiving direct-acting antivirals. European journal of  
338 gastroenterology & hepatology 2019; 31:1129-1134.
- 339 [16] Nguyen K, Jimenez M, Moghadam N, Wu C, Farid A, Grotts J et al. Decrease of  
340 Alpha-fetoprotein in Patients with Cirrhosis Treated with Direct-acting Antivirals.  
341 Journal of Clinical and Translational Hepatology 2017; XX:1.
- 342 [17] Schotten C, Ostertag B, Sowa J, Manka P, Bechmann LP, Hilgard G et al. GALAD  
343 Score Detects Early-Stage Hepatocellular Carcinoma in a European Cohort of Chronic  
344 Hepatitis B and C Patients. Pharmaceuticals (Basel, Switzerland) 2021; 14:735.
- 345 [18] Wang W, Wei C. Advances in the early diagnosis of hepatocellular carcinoma.  
346 Genes & Diseases 2020; 7:308-319.
- 347 [19] Nault J, Villanueva A. Biomarkers for Hepatobiliary Cancers. Hepatology 2020;  
348 73:115.
- 349 [20] Piñero F, Dirchwolf M, Pessôa MG. Biomarkers in Hepatocellular Carcinoma:  
350 Diagnosis, Prognosis and Treatment Response Assessment. Cells 2020; 9.
- 351 [21] Oltmanns C, Liu Z, Mischke J, Tauwaldt J, Mekonnen YA, Urbanek-Quaing M et  
352 al. Reverse inflammaging: Long-term effects of HCV cure on biological age. J Hepatol  
353 2023; 78:90-98.
- 354
- 355

## 356 Tables

357 **Table 1:** Baseline characteristics of analyzed patients. Subgroups include patients who  
 358 developed HCC after SVR (HCV HCC) and matched controls (HCV Control) (A). In  
 359 addition, we analyzed patients with chronic HBV infection, MASLD and HCC (B). For  
 360 continuous parameters, mean values and standard deviations and for categorical  
 361 parameters, absolute and relative numbers are shown.  
 362

<b>A</b>	<b>HCV HCC</b>	<b>HCV Control</b>	<b>P-value</b>	<b>Reference</b>
<i>n</i>	31	62		
<b>Age</b>	59.0 (9.62)	58.1 (9.56)		
<b>Sex</b>				
<i>m</i>	26 (83.9%)	53 (85.5%)		
<i>f</i>	5 (16.1%)	9 (14.5%)		
<b>HCV genotype</b>				
<b>1</b>	22 (71.0%)	51 (82.2%)		
<b>2</b>	1 (3.2%)	1 (1.6%)		
<b>3</b>	7 (22.6%)	8 (12.9%)		
<b>4</b>	1 (3.2%)	1 (1.6%)		
<b>Child-Pugh Score</b>				
<b>0</b>	4 (12.9%)	11 (17.7%)		
<b>Child A</b>	21 (67.7%)	43 (69.4%)		
<b>Child B</b>	4 (12.9%)	8 (12.9%)		
<b>Child C</b>	1 (3.2%)	0		
<b>Elastography (kPa)</b>				
<b>&lt;14.5</b>	5 (16.1%)	10 (16.1%)		0-14.5
<b>14.5 - 25.0</b>	3 (9.7%)	13 (21.0%)		
<b>&gt;25.0</b>	23 (74.2%)	39 (62.9%)		
<b>Body mass index</b>	26.8 (2.69)	27.9 (4.61)	0.14	18.5-24.9
<b>Platelets (Tsd/<math>\mu</math>L)</b>	97.9 (49.3)	96.1 (42.8)	0.87	160-370
<b>INR (Ratio)</b>	1.27 (0.334)	1.28 (0.348)	0.86	0.9-1.25
<b>AST (U/L)</b>	97.5 (58.2)	100 (55.3)	0.83	0-35 (m) 0-31 (f)
<b>ALT (U/L)</b>	92.7 (72.6)	101 (65.3)	0.61	0-45 (m) 0-34 (f)
<b>Albumin (g/L)</b>	33.3 (6.12)	35.5 (6.01)	0.10	35-52
<b>HCV-RNA (IU/mL)</b>	1,240,000 (2,010,000)	1,480,000 (1,760,000)	0.58	0

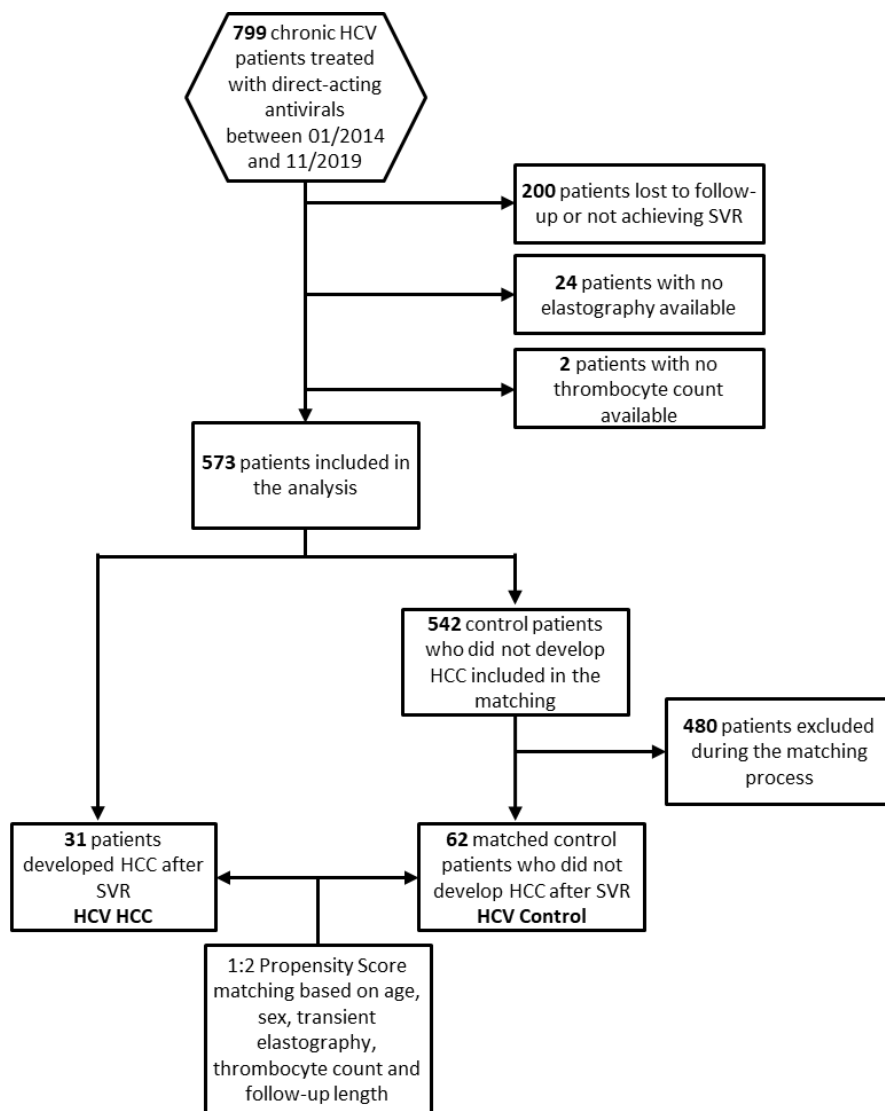


363

<b>B</b>	<b>HBV</b>	<b>MASLD</b>	<b>HCC</b>	<b>Reference</b>
<i>n</i>	22	20	31	
<b>Age</b>	44.0 (11.6)	67.6 (11.7)	50.1 (11.4)	
<b>Sex</b>				
<i>m</i>	11 (50.0%)	7 (35.0%)	25 (80.6%)	
<i>f</i>	11 (50.0%)	13 (65.0%)	6 (19.4%)	
<b>Elastography (kPa)</b>	4.7 (1.8)	9.4 (3.3)	35.8 (23.5)	0-14.5
<b>Platelets (Tsd/<math>\mu</math>L)</b>	231 (52.5)	237 (58.9)	172 (99.4)	160-370
<b>INR (Ratio)</b>	1.04 (0.36)	1.01 (0.1)	1.28 (0.65)	0.9-1.25
<b>AST (U/L)</b>	26.2 (7.2)	48.6 (18.0)	79.3 (82.3)	0-35 (m) 0-31 (f)
<b>ALT (U/L)</b>	30.0 (12.9)	87.0 (40.5)	49.8 (47.3)	0-45 (m) 0-34 (f)

364

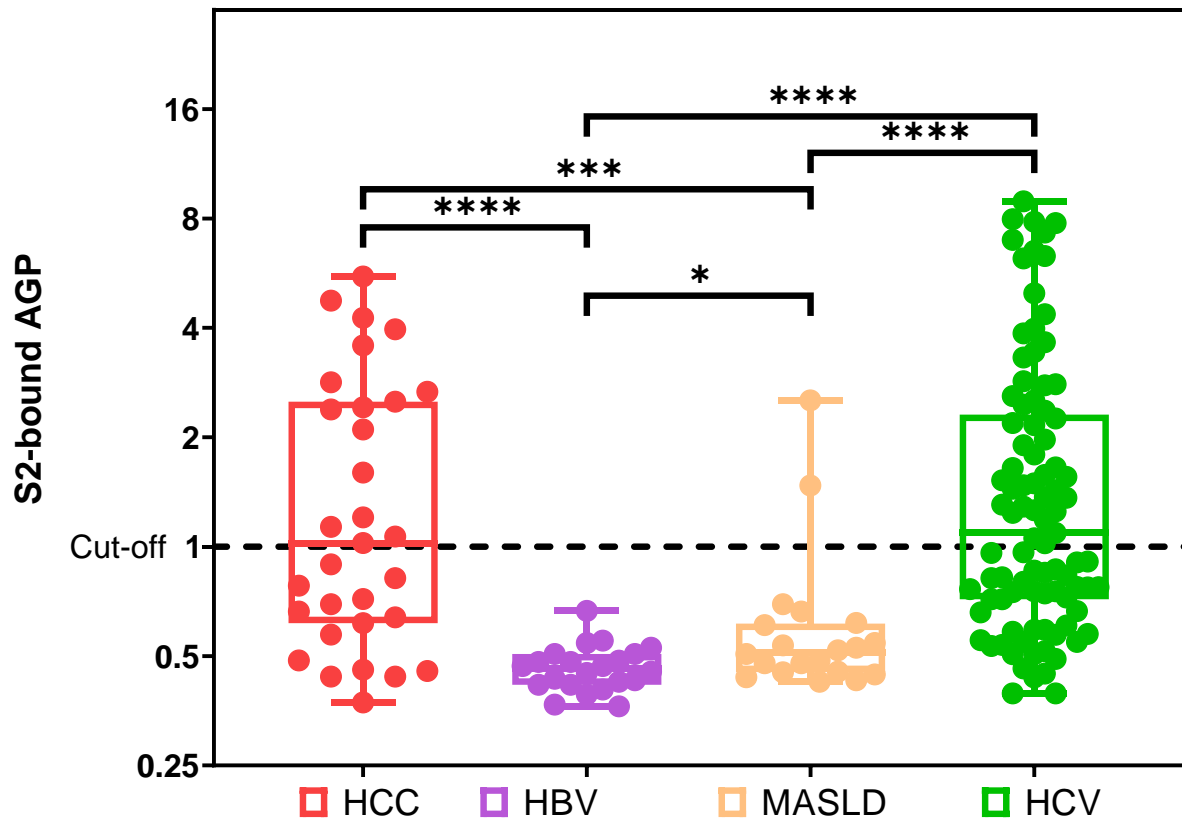
365 **Figures**



366  
367  
368  
369

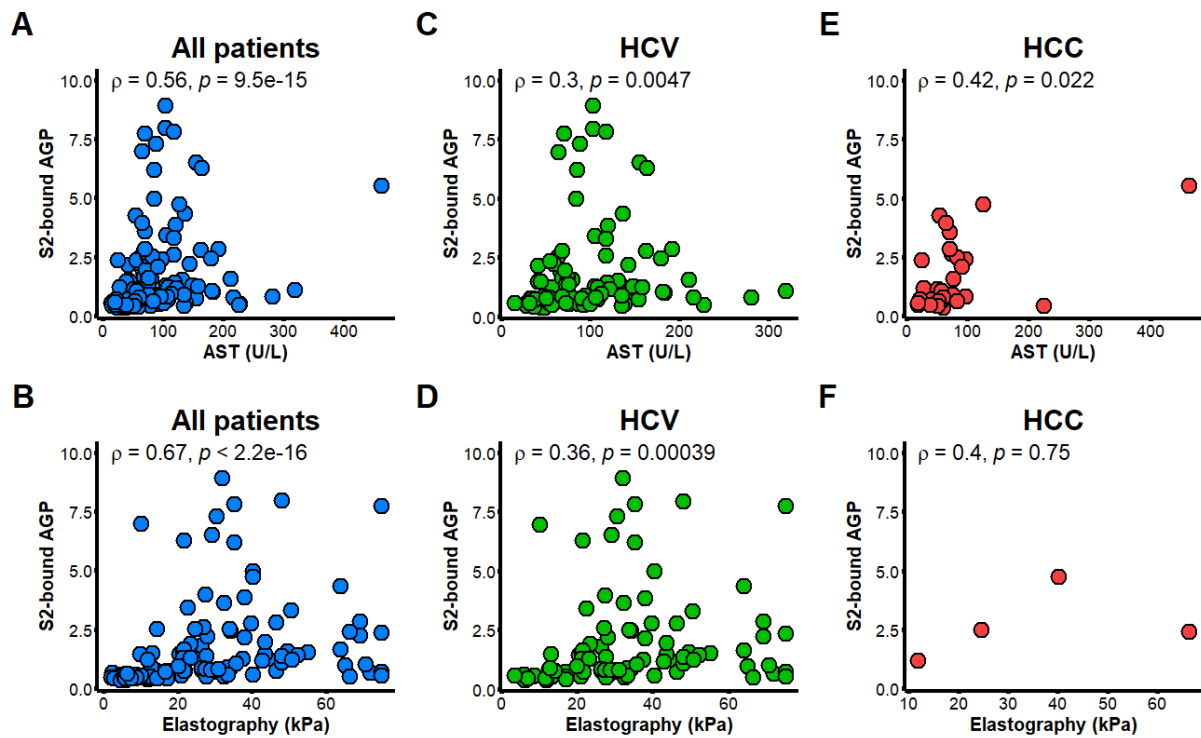
**Figure 1:** Inclusion and exclusion criteria for patients chronically infected with HCV.

## S2-bound AGP in hepatitis and HCC patients



370

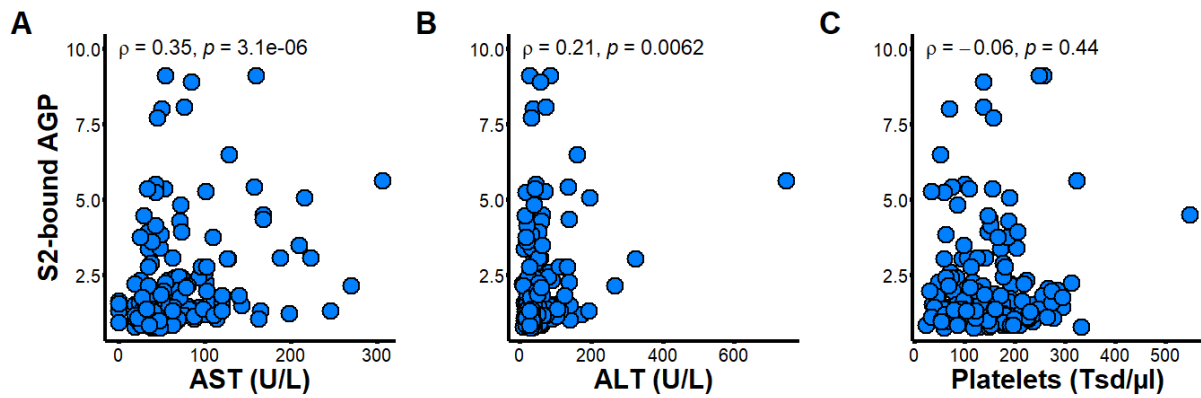
371 **Figure 2:** Concentration of S2-bound AGP in different groups of hepatitis and HCC  
372 patients. For patients chronically infected with HCV (green), baseline results are  
373 presented. Other groups included patients with chronic HBV infection (purple), patients  
374 with metabolic dysfunction-associated steatotic liver disease (orange) and patients  
375 with hepatocellular carcinoma (red). Shown are the median values for each group and  
376 the maximum and minimum values.



377

378 **Figure 3:** Concentration of S2-bound AGP correlated with clinical parameters (AST  
379 and elastography). Correlations are shown for all patients, including patients  
380 chronically infected with HCV at baseline (A-B), patients chronically infected with HCV  
381 at baseline (C-D), and HCC patients from different etiologies (E-F). Spearman's Rank  
382 Correlation was used to calculate all correlations.

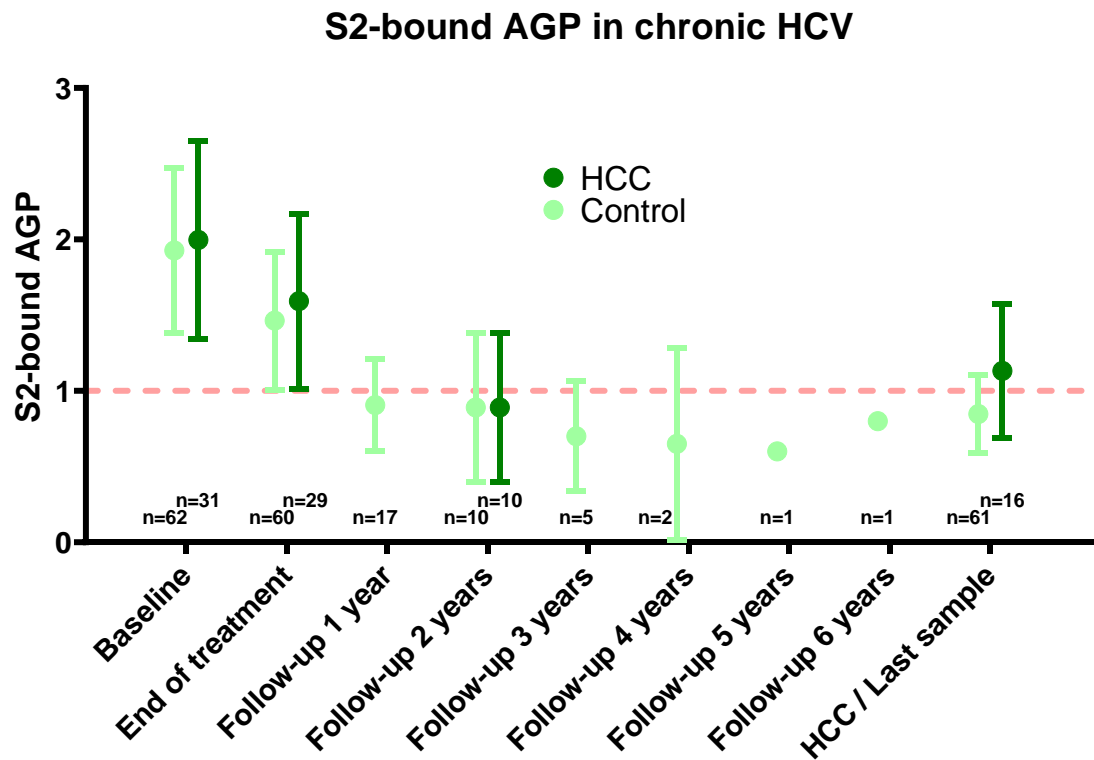
383



384  
385

386 **Figure 4:** Concentration of S2-bound AGP correlated with clinical parameters (AST,  
387 ALT and Platelets) in a Swedish cohort of patients with severe liver disease.  
388 Spearman's Rank Correlation was used to calculate all correlations.

389  
390  
391



392

393 **Figure 5:** Longitudinal analysis of S2-bound AGP in patients chronically infected with  
394 HCV. Patients that developed HCC after SVR (dark green) are compared with the PS-  
395 matched control group (light green). Shown are the median values for each time point  
396 and the 95% confidence interval.



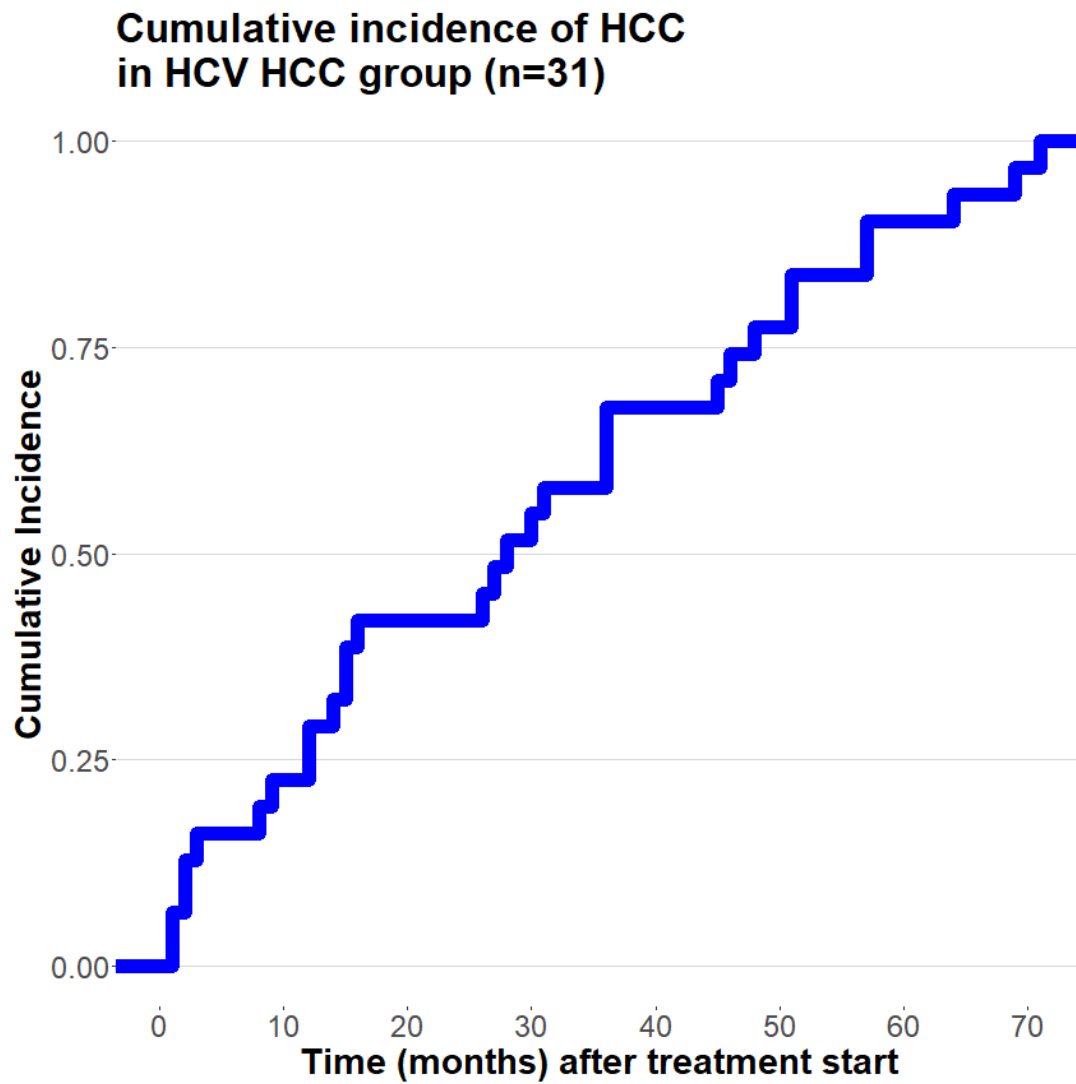
397 **Supplementary material:**

398 **Supplementary Table 1:** Etiology of HCC in HCC group.

<b>Cause of HCC</b>	<b>Number of patients</b>	<b>Percentage</b>
<b>HBV</b>	2	6.5%
<b>HCV</b>	6	19.4%
<b>HDV</b>	3	9.7%
<b>MASLD</b>	4	12.9%
<b>Cryptogenic fibrosis / cirrhosis</b>	2	6.4%
<b>Hemochromatosis</b>	1	3.2%
<b>Ethyl toxic</b>	6	19.4%
<b>Ethyl toxic / viral hepatitis</b>	3	9.7%
<b>Ethyl toxic / MASLD</b>	1	3.2%
<b>Not available</b>	3	9.7%

399

400

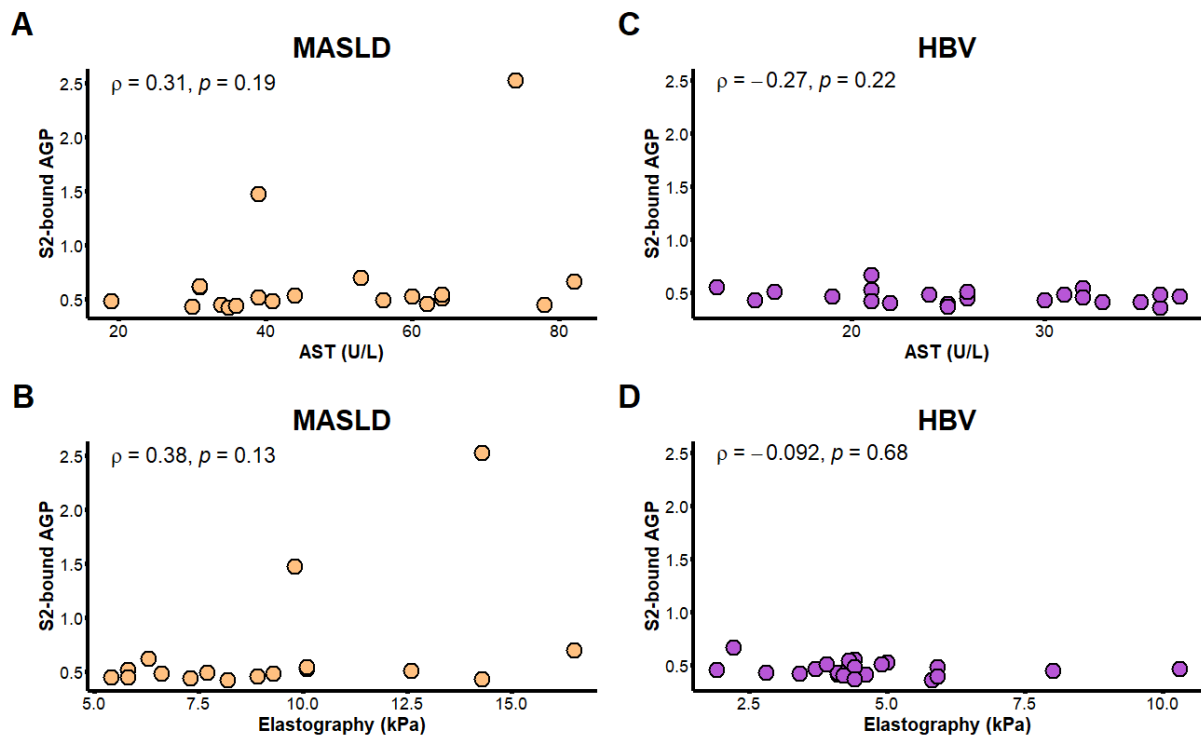


401

402 **Supplementary Figure 1:** Cumulative incidence of HCC in HCV HCC group after treatment  
403 initiation.

404

405



406

407 **Supplementary Figure 2:** Concentration of S2-bound AGP correlated with clinical  
408 parameters (AST and elastography). Correlations are shown for MASLD (A-B) and  
409 chronic HBV (C-D) patients. Spearman's Rank Correlation was used to calculate all  
410 correlations.