

1 **Title**

2 Prognostic Value of Angiography-derived Microcirculatory Resistance in Patients  
3 undergoing Rotational Atherectomy

4

5 **Running title**

6 The predictive implications of AMR in patients undergoing RA

7

8 **Author**

9 Xi Zhang<sup>1</sup>(Master)<sup>†</sup>, Qing Jin<sup>1</sup>(Master)<sup>†</sup>, Jiaji He(Master)<sup>1</sup>, Tao

10 Zhao(Master)<sup>1</sup>,Guiping He(Master)<sup>1</sup>, Qiang Xue(Master)<sup>1,\*</sup>, Xuefeng Guang(MD)<sup>1</sup>

11

12 Department of Cardiology, Yan'an Hospital of Kunming City, Yan'an Hospital

13 Affiliated To Kunming Medical University,650051 Kunming, China

14 \*Correspondence: xueqiang3513@126.com (Qiang Xue);

15 †These authors contributed equally.

16

17 **Abstract**

18 **BACKGROUND:** Rotational atherectomy (RA) is predominantly employed in the

19 treatment of severe calcification lesions in patients with coronary atherosclerotic heart

20 disease (CAD). Studies focusing on the assessment of postoperative microvascular

21 dysfunction (CMD) after RA and related prognosis are scarce.

**NOTE:** This preprint reports new research that has not been certified by peer review and should not be used to guide clinical practice.

1 AIMS: we attempted to investigate the predictive significance of coronary  
2 angiography-derived microcirculatory resistance (AMR) in patients with coronary  
3 RA.

4 METHODS: This retrospective study analyzed the data from 114 patients who were  
5 successfully treated between January 2019 and September 2022. Coronary  
6 microcirculatory function after RA was assessed using AMR. Patients were  
7 categorized into CMD and non-CMD groups depending on a postoperative AMR of  
8  $\geq 2.5$  mmHg-s/cm. Patients were followed up for postoperative major adverse  
9 cardiovascular events (MACE).

10 RESULTS: We analyzed the data from 114 patients, and post-RA, the mean AMR,  
11 mean QFR, and the percentage of CMDs were significantly higher compared to those  
12 before RA. MACE occurred in 14 (12.3%) patients after a year of follow-up. A higher  
13 proportion of patients in the MACE group showed post-RA AMR of  $\geq 2.5$   
14 mmHg-s/cm (57.1% vs. 27.0%,  $P=0.048$ ). Cox regression analysis showed that AMR  
15  $\geq 2.5$  mmHg-s/cm (HR=3.86, 95%CI. 1.28-11.63,  $P=0.016$ ) and renal insufficiency  
16 (HR=9.92, 95%CI: 2.06-47.83,  $P=0.004$ ) were independent predictors of MACE.  
17 Logistic regression analyses showed the length of the RA operative area and diabetes  
18 mellitus (DM) were related to post-RA CMD.

19 CONCLUSION: In patients with CAD treated with RA, AMR  $\geq 2.5$  mmHg-s/cm  
20 independently predicted post-RA MACE; furthermore, the operative length of RA and  
21 the comorbid DM were associated with CMD following RA.

1

2 **Keywords:**

3 rotational atherectomy, angiographic microvascular resistance, coronary

4 microvascular dysfunction, major adverse cardiovascular events

5

6 **Abbreviations**

7 RA, rotational atherectomy; AMR, angiography-derived microcirculatory

8 resistance; PCI, percutaneous coronary intervention; CFR, coronary flow reserve;

9 CMR, coronary microvascular resistance; IMR, index of microvascular resistance;

10 MACE, major adverse cardiovascular events

11

12 **Main Text**

13 **Background**

14 Coronary atherosclerotic heart disease (CAD), with a frequent incidence, poses a

15 serious threat to human health worldwide,[1, 2] and nearly 30% of these cases are

16 associated with moderate or severe coronary artery calcification.[3-5] Calcified

17 lesions pose many challenges to percutaneous coronary intervention (PCI), such as

18 intraoperative balloon dilatation stuck, difficult stent passage or incomplete stent

19 expansion, and increased risk of postprocedural stent restenosis and thrombosis,

20 resulting in an enhanced risk of ischemic events which seriously affect the long-term

21 prognosis.[4, 6, 7] Rotational atherectomy (RA) is increasingly being recognized as

1 improving the surgical success rate by breaking down calcified plaques through  
2 high-speed rotation of the rotary head.[8, 9] However, its use may lead to vascular  
3 and microcirculatory damage, further exacerbating myocardial ischemia and leading  
4 to the deterioration of cardiac function.[10]

5

6 At present, clinical assessment of microcirculation mainly encompasses coronary  
7 flow reserve (CFR), index of microvascular resistance (IMR), etc., which have not  
8 been widely adopted owing to limitations such as complex operative processes and  
9 unstable measurement. Angiographic microvascular resistance (AMR) from coronary  
10 angiography does not require the use of pressure guidewire and vasodilator drugs, is  
11 simple to operate, and can achieve the measurement of microcirculatory resistance  
12 within 1–2 min. It has the advantages of being economical and simple. Relevant  
13 studies have shown AMR's high accuracy and suitability for clinical use.[11]

14

15 Studies on the assessment of post-RA coronary microvascular dysfunction (CMD)  
16 and related prognoses are scanty. To address this, we designed a retrospective,  
17 single-center clinical trial to assess the effect of RA on postoperative microcirculatory  
18 function in patients with severe calcification using AMR and determine its correlation  
19 with major adverse cardiovascular events (MACE) after RA.

20

21 **Study design**

1 This was a retrospective, single-center study that complied with medical ethics and  
2 was approved by the Ethics Committee of our hospital (YAXLL-AF-SC-021/01). All  
3 procedures performed on patients followed the Helsinki Declaration

#### 4 **Inclusion criteria**

5 Consecutively enrolled patients with severe calcification of coronary arteries who  
6 received intraoperative RA treatment between January 2019 and September 2022 in  
7 the Yan'an Hospital, Kunming, China. The inclusion criteria were (1) age  $\geq 18$  years  
8 and (2) the presence of severe calcification in at least one vessel that was successfully  
9 treated with RA. Severe calcification was defined either as coronary angiography  
10 (CAG) showing a dense shadow that traveled along the vessel wall and was visualized  
11 during the cardiac cycle, or intravascular ultrasound (IVUS) showing a hyperechoic  
12 plaque with posterior acoustic shadows at  $> 180^\circ$  .

13 Exclusion criteria in the clinical settings were (1) patients who did not receive  
14 treatment with RA, (2) unavailability of follow-up data, and (3) acute myocardial  
15 infarction within 7 days of RA. Angiography exclusion criteria were (1) missing  
16 preoperative or postoperative contrast and (2) AMR analysis was not possible because  
17 of the inability to detect vessel borders or poorly filled contrast, excessive overlap of  
18 stenotic segments, or severely tortuous lesions in the target vessel. All interventions  
19 performed for patients were in line with the guidelines outlined in the Declaration of  
20 Helsinki. Informed consent of patients was waived-off because all data in this study  
21 were retrospectively collected.

1

## 2 **Procedure of RA**

3 All RA surgeries were performed following the standard therapeutic procedures  
4 outlined in the extant guidelines. The rotary mill head diameter ranged from 1.25 to  
5 2.0 mm and speed was maintained between 13 and  $22 \times 10^4$  rpm.[8, 12, 13]  
6 Intraoperative irrigation with heparinized saline was routinely performed to reduce the  
7 incidence of decreased blood flow. Intraoperative surgical procedures such as IVUS  
8 evaluation, cutting balloon dilatation, or drug-eluting stent placement were decided by  
9 the operator according to the lesional characteristics. The surgery was considered  
10 successful when CAG suggested that the residual stenosis of the vessel was small, i.e.,  
11  $\leq 30\%$  and the TIMI flow was graded III. For intraoperative complications such as  
12 decreased blood pressure, hematoma, and entrapment, patients received standard  
13 treatment and were documented in the RA surgical management system. All patients  
14 received dual antiplatelet therapy and secondary prevention of coronary heart disease  
15 after surgery was exercised. Preoperative and postoperative imaging data were  
16 preserved for calculating Murray's law-based quantitative flow ratio ( $\mu$  QFR) and  
17 AMR.

18

## 19 **AMR and QFR measurements**

20 The CAG image meeting the criterion was imported in AngioPlus software  
21 (Pulse Medical Technology, Shanghai, China).  $\mu$  QFR and AMR calculation

1 methods have been previously published. Briefly, coronary arteries were  
2 revascularized using Murray's law, and  $\mu$  QFR was derived along with simulated  
3 congestive state flow velocities.[14] Distal coronary pressure (Pd) was obtained based  
4 on the pressure drop, and  $AMR = Pd / \text{simulated hyperemic flow velocity } (Velocity_{hyp})$   
5 was calculated as shown in Fig. 2. [15] Patients with an  $AMR \geq 2.5$  mmHg-s/cm  
6 were defined as those with CMD.

$$7 \quad \quad \quad \mathbf{AMR = Pd / Velocity_{hyp} = Pa * \mu QFR / Velocity_{hyp}}$$

8

9 AMR and QFR were measured by two specialists blinded to the patient's clinical  
10 characteristics and information related to RA surgery and clinical outcomes. In case  
11 of any contradiction such as inconsistency in the results, the data were analyzed by a  
12 third specialist, and agreement was reached after discussion .  $\Delta$  AMR was calculated  
13 as post AMR-pre AMR.

14

15 AMR and QFR were measured by two specialists blinded to the patient's clinical  
16 characteristics and information related to RA surgery and clinical outcomes. In case  
17 of any contradiction such as inconsistency in the results, the data were analyzed by a  
18 third specialist, and agreement was reached after discussion .  $\Delta$  AMR was calculated  
19 as post AMR-pre AMR.

20

21 **Follow-up and clinical outcomes**

1 Patients meeting the inclusion criteria were included and their clinical data were  
2 collected. Follow-up visits for patients who were discharged from the hospital were  
3 completed periodically through outpatient or inpatient visits or by telephone. To avoid  
4 confounding factors, all data were collected based on information recorded in the  
5 hospital's electronic system. Clinical endpoints in this study were defined as MACE  
6 (all-cause death, nonfatal myocardial infarction, revascularization, and angina-related  
7 rehospitalization).

8

## 9 **Statistical methods**

10 Histograms were used to assess data distribution. Normally distributed continuous  
11 variables are expressed as mean  $\pm$  standard deviation and non-normally distributed  
12 data as median and interquartile range. Categorical variables are expressed as  
13 frequencies and percentages. Comparison between baseline and follow-up normally  
14 distributed data was performed using t-tests, while non-normally distributed data were  
15 compared using Wilcoxon signed-rank tests.

16

17 Kaplan-Meier analysis of event-free survival (EFS) allowed the assessment of  
18 possible risk factors (sex, age, smoking, CMD, etc.), and their significance was tested  
19 by a log-rank test. Univariate COX analysis with  $P < 0.10$  was considered statistically  
20 significant and included as an independent variable in the COX regression model.  
21 Likelihood ratios (LRs) were used to confirm reasonably and statistically significant



1 interactions. The predictive effect of CMD on MACE was assessed using the COX  
2 regression model. Univariate and subsequent multivariate logistic regression analyses  
3 were used to determine associations between patient characteristics, surgical factors  
4 related to RA, and CMD after RA. Differences were considered statistically  
5 significant for  $P < 0.05$ . Statistical analysis was performed using SPSS Statistics,  
6 version 26 (IBM Inc, Armonk, NY, USA).

7

## 8 **Results.**

### 9 **1 Patients' baseline characteristics**

10 In total, 121 patients who met the inclusion criteria were included. As shown in  
11 Figure 1, follow-up was completed for 114 patients (94.2%). The clinical and  
12 angiographic characteristics of the included patients are shown in Table 1. The mean  
13 age was 66.1 years and 56 (49.1%) were male. Seventy-one (62.3%) suffered from  
14 hypertension, 46 (40.4%) had dyslipidemia, 48 (42.1%) had DM; 15 (13.2%) had  
15 previous myocardial infarction and six (5.3%) had PCI history. All patients showed  
16 multiple coronary artery lesions with 55 patients (48.2%) having three lesions.  
17 Among vessels subjected to RA, the distribution was 79 (69.3%) patients with left  
18 anterior descending, 6 (5.3%) with left echogenic, and 24 (21.1%) with right coronary  
19 vessels.

20

### 21 **2 QFR and AMR results**

1           The mean post-AR AMR ( $2.28 \pm 0.52$  vs.  $1.15 \pm 0.73$ ,  $P < 0.0001$ ) and QFR ( $0.92$   
2            $\pm 0.01$  vs.  $0.41 \pm 0.02$ ,  $P < 0.0001$ ) were significantly higher than the values before RA,  
3           as shown in Figure 3. Patients were categorized into CMD and non-CMD groups  
4           based on the postoperative AMR, and the value in the former was significantly higher  
5           than that in the latter ( $2.89 \pm 0.43$  vs.  $2.02 \pm 0.38$ ,  $P < 0.0001$ ). Thirty-five patients  
6           (30.7%) suffered CMD after RA, significantly higher than the pre-RA CMD rates  
7           ( $P < 0.0001$ , Figure 4A).

8

### 9           **3 Correlation between AMR and MACE following RA and the main prognostic** 10           **predictors for patients with RA**

11           Fourteen patients (12.3%) showed MACE events during the follow-up. Two died  
12           of cardiac causes; six underwent revascularization; two suffered from stroke, and two  
13           died of non-cardiac causes. The patients were categorized into MACE and  
14           non-MACE groups based on the occurrence of MACE events.

15

16           There was no significant difference in preoperative AMR in patients who  
17           developed MACE compared to those who did not ( $0.96 \pm 0.65$  vs.  $1.13 \pm 0.67$ ,  
18            $P = 0.391$ ). However, there was a trend toward higher postoperative AMR in patients  
19           in the MACE group ( $2.59 \pm 0.77$  vs.  $2.24 \pm 0.47$ ,  $P = 0.118$ , Table 1). The proportion of  
20           patients with CMD was higher in the MACE group (57.1% vs 27.0%,  $P = 0.048$ ,  
21           Figure 4B).

1

2 Kaplan-Meier curve analysis showed a significantly higher incidence of MACE in  
3 postoperative AMR-defined CMD compared with non-CMD (22.8% vs. 7.6%;  
4 HR=3.17; 95% CI:1.10–9.14; log-rank  $P=0.023$ ) among patients as shown in Figure 5.  
5 Univariate and multivariate Cox regression results of MACE predictors are shown in  
6 Table 2. Post-RA AMR  $\geq 2.5$  and renal insufficiency were independently associated  
7 with MACE, evidenced by the results of univariate Cox regression. After adjusting for  
8 confounders, post-RA AMR  $\geq 2.5$  (HR=3.86,95%CI:1.28-11.63,  $P=0.016$ ) and renal  
9 insufficiency (HR=9.92,95%CI:2.06-47.83,  $P=0.004$ ) remained statistically  
10 significant in the multivariate Cox regression model as an independent predictor of  
11 primary outcome in patients with RA (post-refers to ‘after RA operation’; pre-RA  
12 indicates ‘before RA operation’).

13

#### 14 **4 Predictors of postoperative CMD in patients with RA**

15 Table 3 shows the predictors of postoperative CMD in RA obtained by using  
16 univariate and multivariate logistic regression models. The significant predictors in  
17 the univariate analysis included age, hypertension, DM, previous myocardial  
18 infarction, creatinine, number of variable vessels, lesion length, three lesion lesions,  
19 maximum diameter and number of rotary grinders, maximum duration of a single RA,  
20 total duration of RA, and complications. Multivariate analysis showed that

1 independent predictors of postoperative CMD were lesion length (OR=2.03, 95% CI:  
2 1.16 – 3.59,  $P=0.014$ ) and diabetes (OR=2.66, 95% CI: 1.12–6.31,  $P=0.027$ ).

3

#### 4 **Discussion**

5 This study attempted to determine the effect of RA on coronary microcirculatory  
6 function and prognosis based on AMR. The main findings were as follows: (1) RA  
7 typically resulted in an increase in post-RA microcirculatory resistance and the  
8 number of patients with CMD. (2) MACE's incidence increased significantly among  
9 patients with CMD compared to those without CMD; (3) AMR-defined CMD was  
10 determined as an independent risk factor for the occurrence of MACE events after RA.  
11 (4) Lesion length subjected to RA and DM were independent predictors of post-RA  
12 CMD.

13

14 RA pretreatment of calcified plaques significantly increases interventional device  
15 passage and improves stent release. It is the most effective treatment tool for severe  
16 calcification.[16] However, plaque debris generated by RA treatment leads to adverse  
17 effects including microcirculatory disturbances, increasing myocardial injury, and  
18 no-reflow.[17]

19

20 IMR and CFR are relative reference standards for the assessment of  
21 microcirculation.[18, 19] IMR measurement based on pressure-temperature guide

1 wire requires repeated low-temperature saline perfusion, which greatly limits the  
2 technological application due to repeatability and poor convenience.[20, 21] CFR has  
3 application limitations as it is highly pressure-dependent on maximum congested  
4 coronary blood flow and is easily affected by changes in hemodynamics and heart rate.  
5 [22] Invasive measurements increase the unpredictable risk of surgery.

6  
7 In recent years, accumulating evidence and clinical applications of CAG-related  
8 FFR are in strong agreement with guidewire-based FFR and have been highly  
9 promoted owing to their simplicity.[23-25] Numerous subsequent studies have  
10 demonstrated the high agreement of angio-FFR-derived microcirculatory resistance  
11 with wire-based IMR with an accuracy ranging from 79.8 - 87.2%.[11, 26, 27]  
12 CAG-IMR is diagnostic of microcirculatory dysfunction and is significantly and  
13 independently associated with adverse events such as cardiovascular death and  
14 rehospitalization due to heart failure. [26, 28]

15  
16 Wang's study confirmed that approximately 45.8% of patients with RA had  
17 single or multivessel CMD. [29] In the present study, we verified that RA increases  
18 the incidence of postoperative CMD in patients, and in the present study, 30.7% of  
19 patients presented with CMD after surgery, lower compared to the percentage  
20 reported previously, which may be due to the lower proportion of chronic total  
21 occlusions (CTO) and milder lesions in patients with RA in the present study.

1

2           We found that patients presenting with CMD after surgery had longer lesion  
3 lengths that required treatment with RA. We hypothesized that most of the plaque  
4 debris produced by RA surgery is much smaller in diameter compared to normal  
5 mature erythrocytes and can be removed in microcirculation without difficulty.[30]  
6 However, when the lesion subjected to RA is longer and has a larger plaque volume,  
7 the degree of calcification is more severe, the number of RA debris and microthrombi  
8 rich in atherosclerotic particles increases, reaching or exceeding the clearance  
9 capacity of the coronary microvascular reticuloendothelial system, leading to massive  
10 amounts of debris accumulating in the microvascular network, exacerbating hypoxia,  
11 stimulating inflammation, generating embolisms and arterial spasms, and ultimately  
12 presenting with an increase in the AMR, or even formation of CMD.[31, 32] Risk  
13 factors such as high LDL, cholesterol, hypertension, stenosis area, and the longest  
14 duration of single spinning, which may be associated with coronary microvascular  
15 function, as reported previously, could not be confirmed in the present study.[26, 28,  
16 33]

17

18           Nearly 60% of postoperative CMD cases are combined with DM, and Williams  
19 et al., showed that the higher the glycated hemoglobin in diabetic patients, the higher  
20 their coronary microcirculation resistance. This may be because of the elevated  
21 concentration of glycated hemoglobin in the blood. Its toxic effect on endothelial cells

1 causes a weakening of the antiplatelet aggregation function and a decrease in the  
2 elasticity of blood vessels, further promoting thrombosis, as well as affecting red  
3 blood cell dysfunction, exacerbating peripheral edema, and other modalities causing  
4 microcirculatory vascular changes in the heart, kidneys, retina and other  
5 microcirculation-related organs. This ultimately decreases the microcirculatory  
6 reserve function.[34] In contrast, a trend toward higher  $\Delta$  AMR was found in diabetic  
7 patients, suggesting that diabetes may amplify the elevated microcirculatory  
8 resistance due to RA, further leading to CMD.

9

10 Compared to non-CMD patients, patients with CMD showed up to four times the  
11 incidence of MACE events. There may be a significant effect of RA surgery on  
12 microvascular function, which is likely to irreversibly induce myocardial damage and  
13 reduced ventricular function, ultimately leading to significant differences in long-term  
14 prognoses.[29] However, other factors may be involved in the development of MACE,  
15 and studies by Watanabe Y, Chen, Cilia L, and others suggest that MACE incidence  
16 is similarly high in patients with RA showing renal insufficiency and low EF,[35-38]  
17 and therefore, the results need to be interpreted with caution.

18

19 This study further confirmed the effect of RA on microcirculation in patients with  
20 severe calcification after surgery. The following processes can be considered to  
21 reduce microcirculation damage during RA: 1) keeping the rotary grinding head slow

1 near fast rewind; 2) reducing the single rotation time and complying with the  
2 operation specification of low intensity and high frequency; 3) using drugs affecting  
3 microcirculation, such as nitrate, adenosine, and glycoprotein IIb/IIIa antagonists, on  
4 a case-by-case basis; 4) active application of norepinephrine and other vasoactive  
5 drugs to avoid endothelial injury, hematoma, and other complications and reduce the  
6 damage of microcirculatory function to improve prognoses of patients.

7

## 8 **Limitations**

9 The limitations of this study warrant consideration. First, this was a single-center  
10 retrospective study with an inherent bias. However, we introduced AMR to assess  
11 coronary microcirculatory function to increase the reliability of observational indexes.  
12 We used objective indexes and documented data as a reference as much as possible,  
13 and we were cautious in interpreting the results of the study. Second, although the  
14 measurement of AMR was optimized based on Murray's law, and the agreement with  
15 wire-IMR was high, prospective studies are needed to confirm the effect of AMR on  
16 the assessment of microcirculation and prognosis. Third, we only observed the  
17 immediate and short-term effects of RA on coronary microcirculation. In future  
18 studies, we plan to determine clinical outcomes in consecutive long-term  
19 observational studies and conduct prospective studies to explore their relationship.

20 **Conclusions**



1 In summary, AMR  $\geq 2.5$  mmHg-s/cm after RA was determined as an independent  
2 risk factor for poor prognosis. There exists an association between rotational length,  
3 DM, and post-RA CMD.

4

#### 5 **Funding**

6 This work was supported by the Funds for Yunnan Provincial Key Research and  
7 Development Program (No. 20200301116).

8

#### 9 **Acknowledgment**

10 Not applicable.

11

#### 12 **Conflict of Interest**

13 The authors declare no conflict of interest.

14

#### 15 **Availability of Data and Materials**

16 The data that support the findings of this study are available from Yan'an  
17 Hospital of Kunming City Medical Record System but restrictions apply to the  
18 availability of these data, which were used under license for the current study, and so  
19 are not publicly available.

20

#### 21 **Author Contributions**

1 QX and XFG designed the research study. XZ, QJ , GpH, TZ and JJH performed  
2 the research. XZ and QJ analyzed and interpreted the data. XZ wrote the manuscript.  
3 All authors contributed to editorial changes in the manuscript. All authors read and  
4 approved the final manuscript. All authors have participated sufficiently in the work  
5 and agreed to be accountable for all aspects of the work.

6

7

## 8 **Ethics Approval and Consent to Participate**

9 The study was approved by the Ethics Committee of Yan'an Hospital of Kunming  
10 City (approval number: YAXLL-AF-SC-021/01). Because data were collected  
11 retrospectively, informed consent on the use of coronary angiography was waived  
12 given the institutional ethics regulations with regard to observational study nature.

13

14

## 15 **References**

16 1.An, J., Y. Zhang, H. Zhou, M. Zhou, M.M. Safford, P. Muntner, A.E. Moran, and K.  
17 Reynolds, Incidence of Atherosclerotic Cardiovascular Disease in Young Adults at  
18 Low Short-Term But High Long-Term Risk.*J Am Coll Cardiol.*2023;81(7);623-632.  
19 2.Silverio, A., M. Di Maio, R. Citro, L. Esposito, G. Iuliano, M. Bellino, C. Baldi, G.  
20 De Luca, M. Ciccarelli, C. Vecchione, and G. Galasso, Cardiovascular risk factors  
21 and mortality in hospitalized patients with COVID-19: systematic review and

- 1 meta-analysis of 45 studies and 18,300 patients. *BMC Cardiovasc*
- 2 *Disord.*2021;21(1);23.
- 3 3.Mori, H., S. Torii, M. Kutyna, A. Sakamoto, A.V. Finn, and R. Virmani, Coronary
- 4 Artery Calcification and its Progression: What Does it Really Mean? *JACC*
- 5 *Cardiovasc Imaging.*2018;11(1);127-142.
- 6 4.Sharma, S.K., M.I. Tomey, P.S. Teirstein, A.S. Kini, A.B. Reitman, A.C. Lee, P.
- 7 Généreux, J.W. Chambers, C.L. Grines, S.I. Himmelstein, C.A. Thompson, I.T.
- 8 Meredith, A. Bhave, and J.W. Moses, North American Expert Review of Rotational
- 9 Atherectomy. *Circ Cardiovasc Interv.*2019;12(5);e007448.
- 10 5.WANG, W., Research advances on calcified nodule in coronary artery
- 11 disease. *Chinese Journal of nterventional Cardiology.*2023;31(2);133-137.
- 12 6.Sharma, S.K., R.W. Bolduan, M.R. Patel, B.J. Martinsen, T. Azemi, G. Giugliano,
- 13 J.R. Resar, R. Mehran, D.J. Cohen, J.J. Popma, and R. Waksman, Impact of
- 14 calcification on percutaneous coronary intervention: MACE-Trial 1-year
- 15 results. *Catheter Cardiovasc Interv.*2019;94(2);187-194.
- 16 7.Copeland-Halperin, R.S., U. Baber, M. Aquino, A. Rajamanickam, S. Roy, C.
- 17 Hasan, N. Barman, J.C. Kovacic, P. Moreno, P. Krishnan, J.M. Sweeny, R. Mehran,
- 18 G. Dangas, A.S. Kini, and S.K. Sharma, Prevalence, correlates, and impact of
- 19 coronary calcification on adverse events following PCI with newer-generation DES:
- 20 Findings from a large multiethnic registry. *Catheter Cardiovasc*
- 21 *Interv.*2018;91(5);859-866.

- 1 8.Tomey, M.I., A.S. Kini, and S.K. Sharma, Current status of rotational  
2 atherectomy.*JACC Cardiovasc Interv.*2014;7(4);345-53.
- 3 9.Ahn, S.S., D. Auth, D.R. Marcus, and W.S. Moore, Removal of focal atheromatous  
4 lesions by angioscopically guided high-speed rotary atherectomy. Preliminary  
5 experimental observations.*J Vasc Surg.*1988;7(2);292-300.
- 6 10.Watanabe, Y., T. Naganuma, H. Kawamoto, H. Ishiguro, and S. Nakamura,  
7 In-hospital outcomes after rotational atherectomy in patients with low ejection  
8 fraction.*Scand Cardiovasc J.*2018;52(4);177-182.
- 9 11.Fan, Y., S. Fezzi, P. Sun, N. Ding, X. Li, X. Hu, S. Wang, W. Wijns, Z. Lu, and S.  
10 Tu, In Vivo Validation of a Novel Computational Approach to Assess  
11 Microcirculatory Resistance Based on a Single Angiographic View.*J Pers*  
12 *Med.*2022;12(11).
- 13 12.Barbato, E., D. Carrié, P. Dardas, J. Fajadet, G. Gaul, M. Haude, A. Khashaba, K.  
14 Koch, M. Meyer-Gessner, J. Palazuelos, K. Reczuch, F.L. Ribichini, S. Sharma, J.  
15 Sipötz, I. Sjögren, G. Suetsch, G. Szabó, M. Valdés-Chávarri, B. Vaquerizo, W.  
16 Wijns, S. Windecker, A. de Belder, M. Valgimigli, R.A. Byrne, A. Colombo, C. Di  
17 Mario, A. Latib, and C. Hamm, European expert consensus on rotational  
18 atherectomy.*EuroIntervention.*2015;11(1);30-6.
- 19 13.Levine, G.N., E.R. Bates, J.C. Blankenship, S.R. Bailey, J.A. Bittl, B. Cercek, C.E.  
20 Chambers, S.G. Ellis, R.A. Guyton, S.M. Hollenberg, U.N. Khot, R.A. Lange, L.  
21 Mauri, R. Mehran, I.D. Moussa, D. Mukherjee, B.K. Nallamothu, and H.H. Ting,

- 1 2011 ACCF/AHA/SCAI guideline for percutaneous coronary intervention: a report of  
2 the American College of Cardiology Foundation/American Heart Association Task  
3 Force on Practice Guidelines and the Society for Cardiovascular Angiography and  
4 Interventions. *Catheter Cardiovasc Interv.* 2013;82(4);E266-355.
- 5 14. Tu, S., M. Echavarria-Pinto, C. von Birgelen, N.R. Holm, S.A. Pyxaras, I.  
6 Kumsars, M.K. Lam, I. Valkenburg, G.G. Toth, Y. Li, J. Escaned, W. Wijns, and J.H.  
7 Reiber, Fractional flow reserve and coronary bifurcation anatomy: a novel  
8 quantitative model to assess and report the stenosis severity of bifurcation  
9 lesions. *JACC Cardiovasc Interv.* 2015;8(4);564-74.
- 10 15. Mejia-Renteria, H., J.M. Lee, K.H. Choi, S.H. Lee, L. Wang, T. Kakuta, B.K. Koo,  
11 and J. Escaned, Coronary microcirculation assessment using functional angiography:  
12 Development of a wire-free method applicable to conventional coronary  
13 angiograms. *Catheter Cardiovasc Interv.* 2021;98(6);1027-1037.
- 14 16. Abdel-Wahab, M., R. Toelg, R.A. Byrne, V. Geist, M. El-Mawardy, A. Allali, T.  
15 Rheude, D.R. Robinson, M. Abdelghani, D.S. Sulimov, A. Kastrati, and G. Richardt,  
16 High-Speed Rotational Atherectomy Versus Modified Balloons Prior to Drug-Eluting  
17 Stent Implantation in Severely Calcified Coronary Lesions. *Circ Cardiovasc*  
18 *Interv.* 2018;11(10);e007415.
- 19 17. Li, H., X. Peng, L. Li, Y.D. Feng, G.D. Tang, Y. Zhao, G.J. Yang, N.X. Zheng,  
20 F.C. Sun, H. Ai, and H.P. Zhang, Coronary Microcirculatory Function Indicated by  
21 Coronary Angiography-Derived Index of Microvascular Resistance in Patients

- 1 Undergoing Rotational Atherectomy. *Reviews in Cardiovascular*  
2 *Medicine*.2022;23(10).
- 3 18.Baumgart, D., M. Haude, F. Liu, J. Ge, G. Goerge, and R. Erbel, Current concepts  
4 of coronary flow reserve for clinical decision making during cardiac  
5 catheterization. *Am Heart J*.1998;136(1);136-49.
- 6 19.Doucette, J.W., P.D. Corl, H.M. Payne, A.E. Flynn, M. Goto, M. Nassi, and J.  
7 Segal, Validation of a Doppler guide wire for intravascular measurement of coronary  
8 artery flow velocity. *Circulation*.1992;85(5);1899-911.
- 9 20.Ng, M.K., A.C. Yeung, and W.F. Fearon, Invasive assessment of the coronary  
10 microcirculation: superior reproducibility and less hemodynamic dependence of index  
11 of microcirculatory resistance compared with coronary flow  
12 reserve. *Circulation*.2006;113(17);2054-61.
- 13 21.Aarnoudse, W., W.F. Fearon, G. Manoharan, M. Geven, F. van de Vosse, M.  
14 Rutten, B. De Bruyne, and N.H. Pijls, Epicardial stenosis severity does not affect  
15 minimal microcirculatory resistance. *Circulation*.2004;110(15);2137-42.
- 16 22.MacCarthy, P., A. Berger, G. Manoharan, J. Bartunek, E. Barbato, W. Wijns, G.R.  
17 Heyndrickx, N.H. Pijls, and B. De Bruyne, Pressure-derived measurement of coronary  
18 flow reserve. *J Am Coll Cardiol*.2005;45(2);216-20.
- 19 23.Wang, W., Y. Hu, P. Xiang, X. Sheng, X. Leng, X. Yang, L. Dong, C. Li, Y. Sun,  
20 J. Jiang, J. Xiang, and X. Lin, The diagnostic performance of AccuFFRangio for

- 1 evaluating coronary artery stenosis under different computational conditions. *Quant*  
2 *Imaging Med Surg.*2023;13(4);2496-2506.
- 3 24.Song, L., B. Xu, S. Tu, C. Guan, Z. Jin, B. Yu, G. Fu, Y. Zhou, J. Wang, Y. Chen,  
4 J. Pu, L. Chen, X. Qu, J. Yang, X. Liu, L. Guo, C. Shen, Y. Zhang, Q. Zhang, H. Pan,  
5 R. Zhang, J. Liu, Y. Zhao, Y. Wang, K. Dou, A.J. Kirtane, Y. Wu, W. Wijns, W.  
6 Yang, M.B. Leon, S. Qiao, and G.W. Stone, 2-Year Outcomes of Angiographic  
7 Quantitative Flow Ratio-Guided Coronary Interventions. *J Am Coll*  
8 *Cardiol.*2022;80(22);2089-2101.
- 9 25.Xu, B., S. Tu, L. Song, Z. Jin, B. Yu, G. Fu, Y. Zhou, J. Wang, Y. Chen, J. Pu, L.  
10 Chen, X. Qu, J. Yang, X. Liu, L. Guo, C. Shen, Y. Zhang, Q. Zhang, H. Pan, X. Fu, J.  
11 Liu, Y. Zhao, J. Escaned, Y. Wang, W.F. Fearon, K. Dou, A.J. Kirtane, Y. Wu, P.W.  
12 Serruys, W. Yang, W. Wijns, C. Guan, M.B. Leon, S. Qiao, and G.W. Stone,  
13 Angiographic quantitative flow ratio-guided coronary intervention (FAVOR III  
14 China): a multicentre, randomised, sham-controlled  
15 trial. *Lancet.*2021;398(10317);2149-2159.
- 16 26.Dai, N., W. Che, L. Liu, W. Zhang, G. Yin, B. Xu, Y. Xu, S. Duan, H. Yu, C. Li,  
17 K. Yao, D. Huang, and J. Ge, Diagnostic Value of Angiography-Derived IMR for  
18 Coronary Microcirculation and Its Prognostic Implication After PCI. *Front*  
19 *Cardiovasc Med.*2021;8;735743.
- 20 27.Tebaldi, M., S. Biscaglia, D. Di Girolamo, A. Erriquez, C. Penzo, C. Tumscitz,  
21 and G. Campo, Angio-Based Index of Microcirculatory Resistance for the Assessment

- 1 of the Coronary Resistance: A Proof of Concept Study.*J Interv*  
2 *Cardiol.*2020;2020;8887369.
- 3 28.Nishi, T., T. Murai, G. Ciccarelli, S.V. Shah, Y. Kobayashi, F. Derimay, K.  
4 Waseda, A. Moonen, M. Hoshino, A. Hirohata, A.S.C. Yong, M.K.C. Ng, T. Amano,  
5 E. Barbato, T. Kakuta, and W.F. Fearon, Prognostic Value of Coronary Microvascular  
6 Function Measured Immediately After Percutaneous Coronary Intervention in Stable  
7 Coronary Artery Disease: An International Multicenter Study.*Circ Cardiovasc*  
8 *Interv.*2019;12(9);e007889.
- 9 29.Wang, B., Y. Gao, Y.F. Zhao, P. Jia, J. Han, H.L. Li, Y. Zhang, and Y.W. Xu,  
10 Prognostic Value of Angiography-Derived Index of Microcirculatory Resistance in  
11 Patients with Coronary Artery Disease Undergoing Rotational Atherectomy.*Reviews*  
12 *in Cardiovascular Medicine.*2023;24(5).
- 13 30.Herrmann, J., J.C. Kaski, and A. Lerman, Coronary microvascular dysfunction in  
14 the clinical setting: from mystery to reality.*Eur Heart J.*2012;33(22);2771-2782b.
- 15 31.Williams, M.S., B.S. Collier, H.J. Väänänen, L.E. Scudder, S.K. Sharma, and J.D.  
16 Marmur, Activation of platelets in platelet-rich plasma by rotablation is  
17 speed-dependent and can be inhibited by abciximab (c7E3 Fab;  
18 ReoPro).*Circulation.*1998;98(8);742-8.
- 19 32.Sharma, S.K., G. Dangas, R. Mehran, S. Duvvuri, A. Kini, T.P. Cocks, V.  
20 Kakarala, A.M. Cohen, J.D. Marmur, and J.A. Ambrose, Risk factors for the



- 1 development of slow flow during rotational coronary atherectomy. *Am J*  
2 *Cardiol.*1997;80(2);219-22.
- 3 33.Fearon, W.F., A.F. Low, A.S. Yong, R. McGeoch, C. Berry, M.G. Shah, M.Y. Ho,  
4 H.S. Kim, J.P. Loh, and K.G. Oldroyd, Prognostic value of the Index of  
5 Microcirculatory Resistance measured after primary percutaneous coronary  
6 intervention. *Circulation.*2013;127(24);2436-41.
- 7 34.Williams, A., R. Bissinger, H. Shamaa, S. Patel, L. Bourne, F. Artunc, and S.M.  
8 Qadri, Pathophysiology of Red Blood Cell Dysfunction in Diabetes and Its  
9 Complications. *Pathophysiology.*2023;30(3);327-345.
- 10 35.Zhang, J., X. Gao, Z. Ge, L. Han, S. Lu, X. Qian, Q. Li, Q. Lu, C. Chen, and S.L.  
11 Chen, Impact of intravascular ultrasound-guided drug-eluting stent implantation on  
12 patients with chronic kidney disease: Results from ULTIMATE trial. *Catheter*  
13 *Cardiovasc Interv.*2019;93(7);1184-1193.
- 14 36.Cilia, L., M. Sharbaugh, O.C. Marroquin, C. Toma, C. Smith, F. Thoma, J. Lee,  
15 and S.R. Mulukutla, Impact of Chronic Kidney Disease and Anemia on Outcomes  
16 After Percutaneous Coronary Revascularization. *Am J Cardiol.*2019;124(6);851-856.
- 17 37.Chen, H., X. Yu, G. Qiu, and L. Ma, Predictive value of ACEF score for clinical  
18 prognosis of patients with heavily calcified coronary lesions after percutaneous  
19 coronary intervention with rotational atherectomy. *J Cardiothorac*  
20 *Surg.*2022;17(1);85.

1 38.Mankerious, N., R. Hemetsberger, R. Toelg, M. Abdel-Wahab, G. Richardt, and A.  
2 Allali, Acute and Long-Term Outcomes of Patients with Impaired Left Ventricular  
3 Systolic Function Undergoing Rotational Atherectomy: A Single-Center  
4 Observational Retrospective Study. *Cardiol Ther.*2019;8(2);267-281.

5

6

7

8

9

10

11

12

13

14

15

16

17

18

19

20

21

Table1. Baseline characteristics of the study population

	All patients (n = 114)	MACE (n = 14)	non-MACE (n = 100)	p value
<b>Medical history</b>				
Age,years	66.07±8.85	66.4±2.0	66.0±0.9	0.898
Male,n(%)	56 ( 49.1 )	7 (50.0)	49 (49.0)	0.944
Hypertension,n(%)	71 ( 62.3 )	9 (64.3)	62 (62.0)	0.869
Diabetes,n(%)	48 ( 42.1 )	7 (50.0)	41 (41.0)	0.543
Hyperlipidemia, dyslipidemia,n(%)	46 ( 40.4 )	6 (42.8)	40 (40.0)	0.838
Renal dysfunction*,n(%)	3 ( 2.6 )	2 (14.3)	1 (1.0)	0.042**
Smoker,n(%)	40 ( 35.1 )	5 (35.7)	35 (35.0)	0.906
Other,n(%)	16 ( 14.0 )			
None,n(%)	21 ( 18.4 )			
EF,%	54.91±10.92	49.64±12.23	55.65±10.58	0.053
LDL,mg/dL	2.19±0.72	2.06±0.56	2.21±0.74	0.484
HDL,mg/dL	1.05±0.24	1.06±0.23	1.04±0.24	0.788
TC,mmol/L	3.92±1.00	3.92±0.95	3.93±1.01	0.998
Cr,μmol/L	86.07±89.11	135.71±233.77	78.60±40.53	0.358
UA,μmol/L	359.18±101.35	355.21±135.09	359.78±96.20	0.876
pre-RA AMR,mmHg·s/cm	1.15±0.73	0.96±0.65	1.13±0.67	0.391
post-RA AMR,mmHg·s/cm	2.28±0.52	2.59±0.77	2.24±0.47	0.118
post-RA AMR≥2.5,n(%)	35 ( 30.7 )	8 (57.1)	27 (27.0)	0.048**
<b>Cardiovascular history</b>				
Previous Myocardial infarction,n(%)	15 ( 13.2 )	3 (21.4)	12 (12.0)	0.579
TIA,n(%)	12 ( 10.5 )	2 (14.3)	10 ( 10.0 )	0.98
Story of heart failure,n(%)	17 ( 15.0 )	3 (21.4)	14 (14.0)	0.741
Prior PCI,n(%)	6 (5.3%)	1 (7.1)	5 (5.0)	0.553
Other,n(%)	11 ( 9.6 )			

None,n(%)		61 ( 53.5 )			
<b>Angiographic and procedural characteristics</b>					
Vessel Treated,n(%)					
	LAD	79 ( 69.3 )	9 (64.3)	70 (70.0)	0.455
	LCX	6 ( 5.3 )	0 (0.0)	6 (6.0)	
	RCA	24 ( 21.1 )	4 (28.6)	20 (20.0)	
	LAD&LCX	5 ( 4.4 )	1 (7.1)	4 (4.0)	
Three-vessel coronary disease,n(%)		55 ( 48.2 )	8 (57.1)	47 (47.0)	0.477
Stenosis rate of target vascular area,%		88.33±7.39	89.77±7.67	88.13±7.37	0.455
rotational lesion,mm		21.99±7.92	24.61±6.60	21.65±8.04	0.206
Rotational time,s		127.50±79.80	128.84±81.78	114.28±59.89	0.739
Maximum RA time of each pass,s		16.17±2.10	16.14±2.04	16.18±2.12	0.946
Maximum rotational speed (10,000 rpm)		16.22±1.60	15.86±1.21	16.25±1.64	0.632
Number and the maximum size of burrs,n (%)					
	1	106 ( 93.0 )	10 (71.4)	96 (96.0)	0.315
	2	8 ( 7.0 )	4 (28.6)	4 (4.0)	
	1.25 mm	23 ( 20.2 )	2 (12.5)	21 (19.4)	0.181
	1.50 mm	69 ( 60.5 )	8 (50.0)	61(56.5)	
	1.75 mm	21 ( 18.4 )	3 (18.8)	18 (19.0)	
	2.00 mm	9 ( 7.9 )	3 (18.8)	6 (6.0)	
No reflow,n(%)		7 ( 6.1 )	3 (21.4)	4 (4.0)	0.176
Mild complications		47 (41.2)	7 (50.0)	40 (40.0)	0.894
Serious complication		11 ( 9.6 )	3 (21.4)	8 (8.0)	0.267

Values are mean±standard deviation, median (interquartile range) or n(%); AMR,Angiographic microvascular resistance; EF,left ventricular ejection fraction; LDL,Low Density Lipoprotein; TC,total cholesterol;Cr,creatinine; UA,uric acid; LAD, left anterior descending artery; LCX,left circumflex; RCA,right coronary artery; RA,rotational atherectomy; rpm,revolutions per minute; Mild complications include hematoma,dissection,etc., but blood pressure is stable; Severe complications include shock and the need for auxiliary devices such as IABP or ECMO,etc.  
\*:P<0.1,\*\*:P<0.05

- 1
- 2
- 3
- 4
- 5
- 6
- 7
- 8
- 9
- 10
- 11

Table2. Predictors of the MACE in patients who underwent RA.

Variable	Univariable analysis			Multivariable analysis		
	HR value	HR95.0%CI	P value	HR value	HR95.0%CI	P value
post-RA AMR≥2.5	3.17	1.10-9.14	0.033**	3.86	1.28-11.63	0.016**
EF,%	0.959	0.92-1.00	0.051*	0.96	0.92-1.01	0.086*
Renal dysfunction	9.23	2.03-41.99	0.004**	9.92	2.06-47.83	0.004**
No reflow	3.21	0.71-14.54	0.129			

HR,hazard ratio; CI,confidence interval; AMR,Angiographic microvascular resistance; RA, rotational atherectomy; EF,estimated glomerular filtration rate; LDL,Low-density lipoprotein; MACE,Major Adverse Cardiovascular Events; \*:P<0.1,\*\*:P<0.05

1  
2  
3  
4  
5  
6  
7  
8  
9  
10  
11  
12  
13  
14  
15

Table3. Independent predictors of CMD

Variable	Univariable analysis			Multivariable analysis		
	OR value	OR95.0%CI	P value	OR value	OR95.0%CI	P value
Age,years	0.98	0.94-1.02	0.38			
Male,n(%)	0.75	0.34-1.63	0.46			
Hypertension,n(%)	1.65	0.71-3.86	0.25			
Diabetes,n(%)	2.32	1.04-5.18	0.039**	2.66	1.12-6.31	0.027**
Hyperlipidemia, dyslipidemia,n(%)						
Renal dysfunction*,n(%)	0.78	0.08-7.71	0.83			
Smoker,n(%)	1.60	0.70-3.66	0.27			

EF,%	1.00	0.96-1.04	0.95			
LDL;mg/dL	0.95	0.57-1.60	0.86			
TC,mmol/L	0.87	0.57-1.32	0.52			
LP(a),mg/L	1.00	0.99-1.00	0.36			
Cr,μmol/L	0.99	0.98-1.01	0.48			
UA,μmol/L	0.99	0.99-1.00	0.53			
Story of heart failure,n(%)	0.89	0.29-2.72	0.84			
Three-vessel coronary disease,n(%)	0.59	0.27-1.31	0.59			
Stenosis rate of target vascular area,%	1.03	0.97-1.10	0.29			
rotational lesion,mm	2.13	1.22-3.75	0.008**	2.03	1.16-3.59	0.014**
Rotational time,s	1.00	0.99-1.01	0.63			
Maximum RA time of each pass,s	1.11	0.88-1.41	0.37			
No reflow,n(%)	0.59	0.06-5.54	0.64			
Mild complications	0.96	0.35-2.63	0.94			
Serious complication	0.24	0.03-1.99	0.18			
Number size of burrs	1.54	0.24-9.62	0.65			
The maximum size of burrs	3.20	0.38-26.58	0.28			
Target vessel	1.19	0.75-1.89	0.47			

OR, odds ratio; CI, confidence interval; AMR,Angiographic microvascular resistance;CMD,Coronary microvascular dysfunction,AMR $\geq$ 2.5mmHg·s/cm; EF,left ventricular ejection fraction; LDL,Low Density Lipoprotein; TC,total cholesterol; Cr,creatinine; UA,uric acid; LP(a),Lipoprotein (a); RA, rotational atherectomy; rpm,revolutions per minute; Mild complications include hematoma, dissection, etc. but blood pressure is stable; Severe complications include shock and the need for auxiliary devices such as IABP or ECMO,etc. \*:P<0.1,\*\*:P<0.05

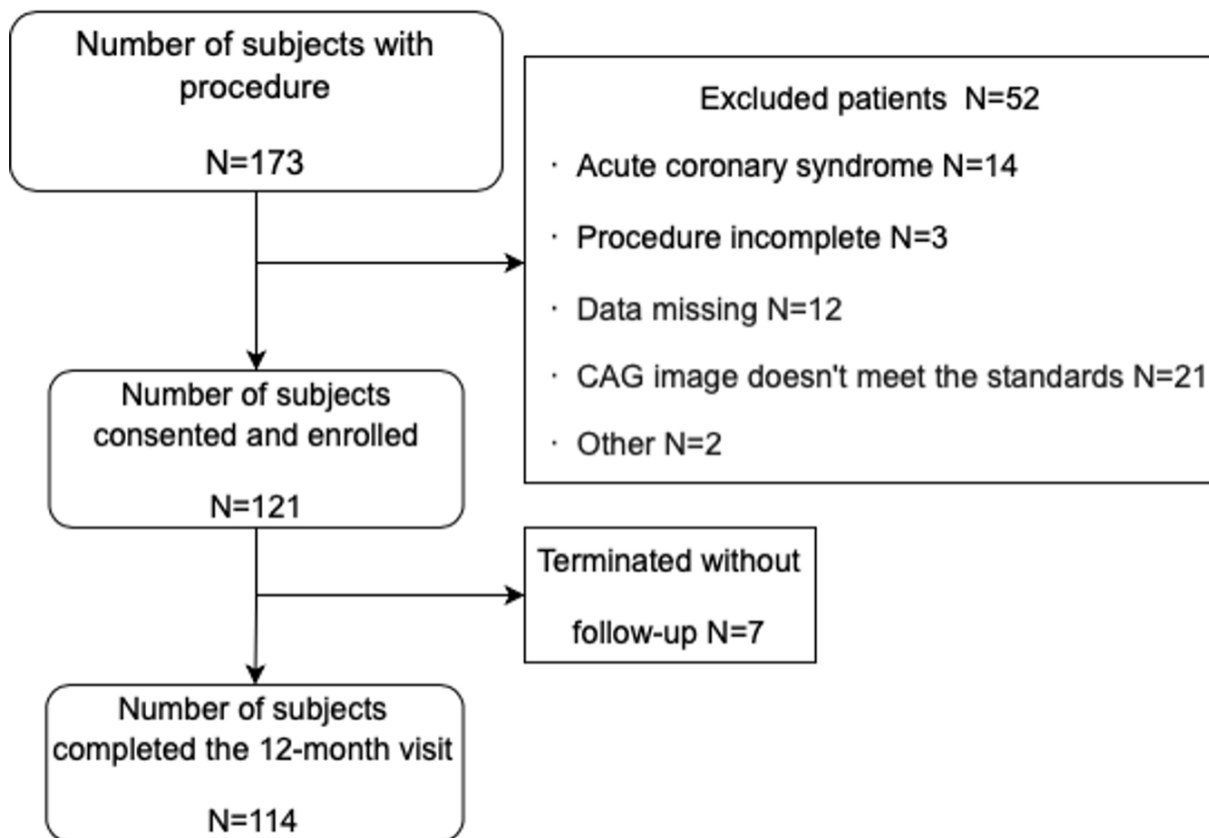
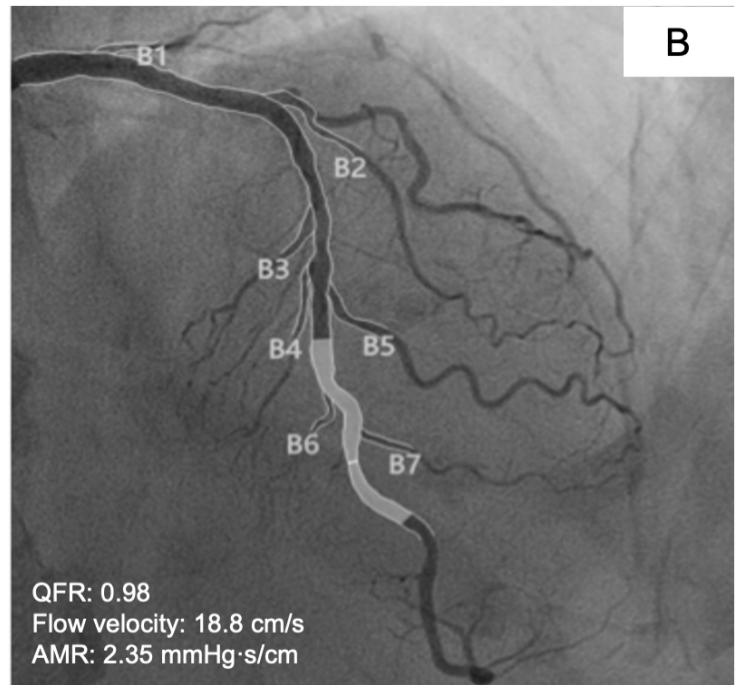
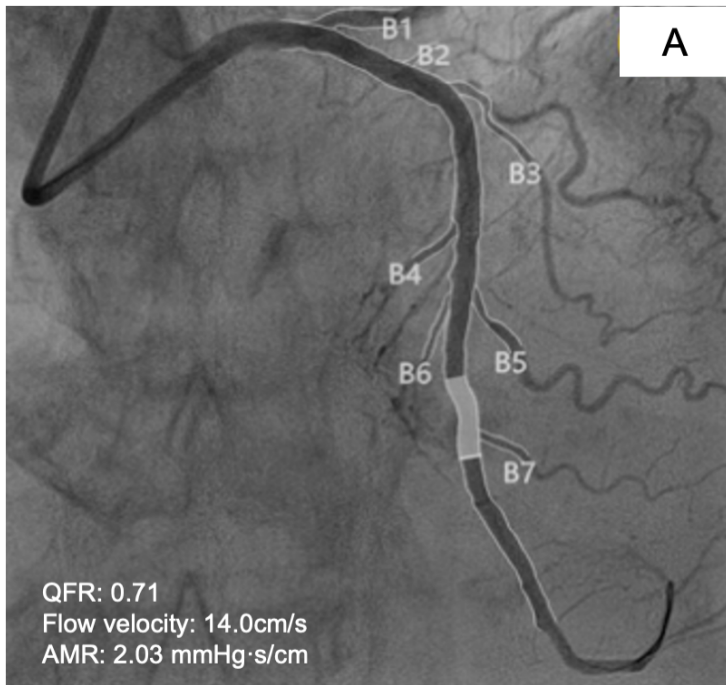


Fig. 1. Flow chart of enrolled patients.





**Fig. 2. Examples of QFR and AMR analysis.** CAG showed a stenosis in the left anterior descending, and QFR was calculated as 0.71, flow velocity was 14.0 cm/s, AMR was calculated as 2.03 mmHg·s/cm (A). After RA, QFR was calculated as 0.98, flow velocity was 18.8 cm/s, and AMR was calculated as 2.35 mmHg·s/cm (B). RA, rotational atherectomy; QFR, quantitative flow ratio; AMR, angiographic microvascular resistance; CAG, coronary angiography.

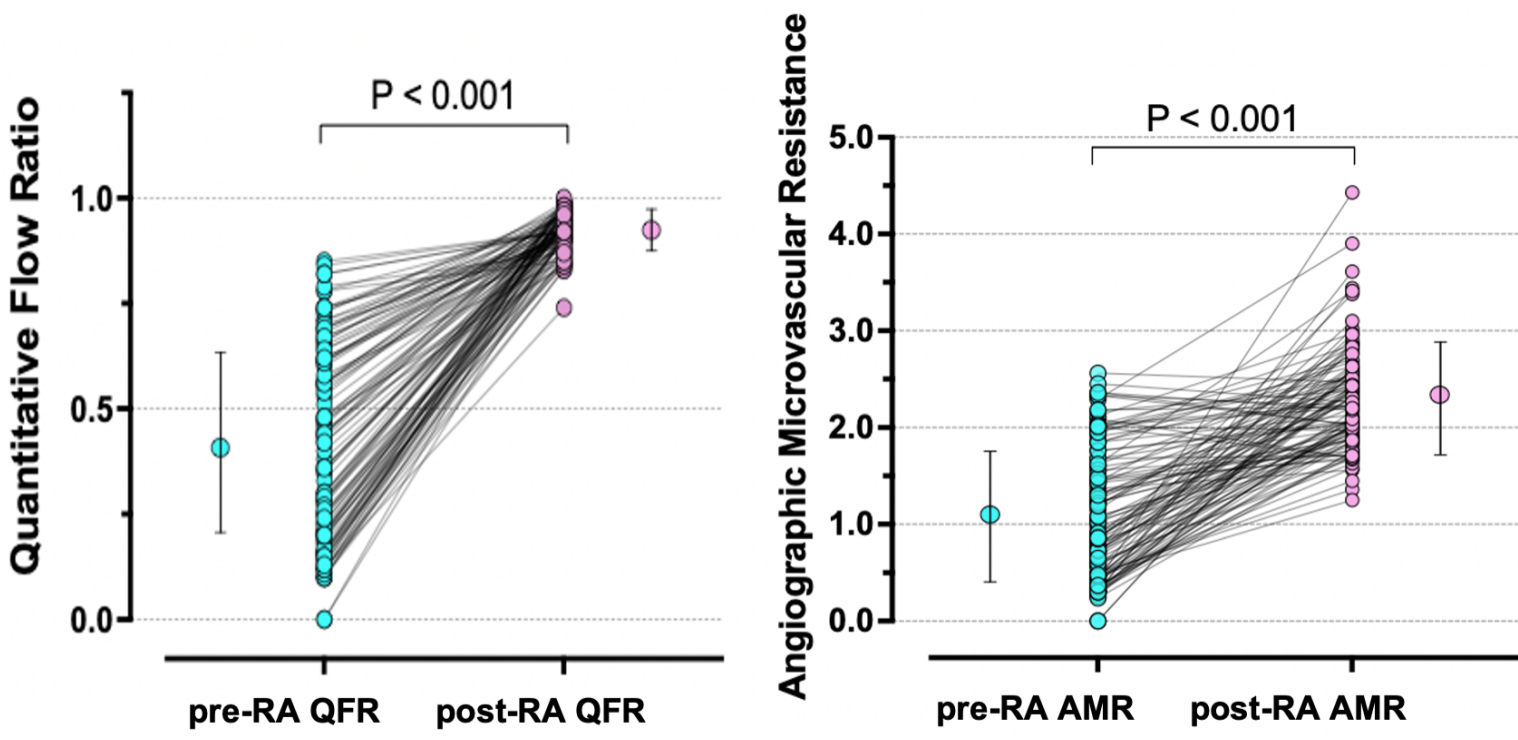
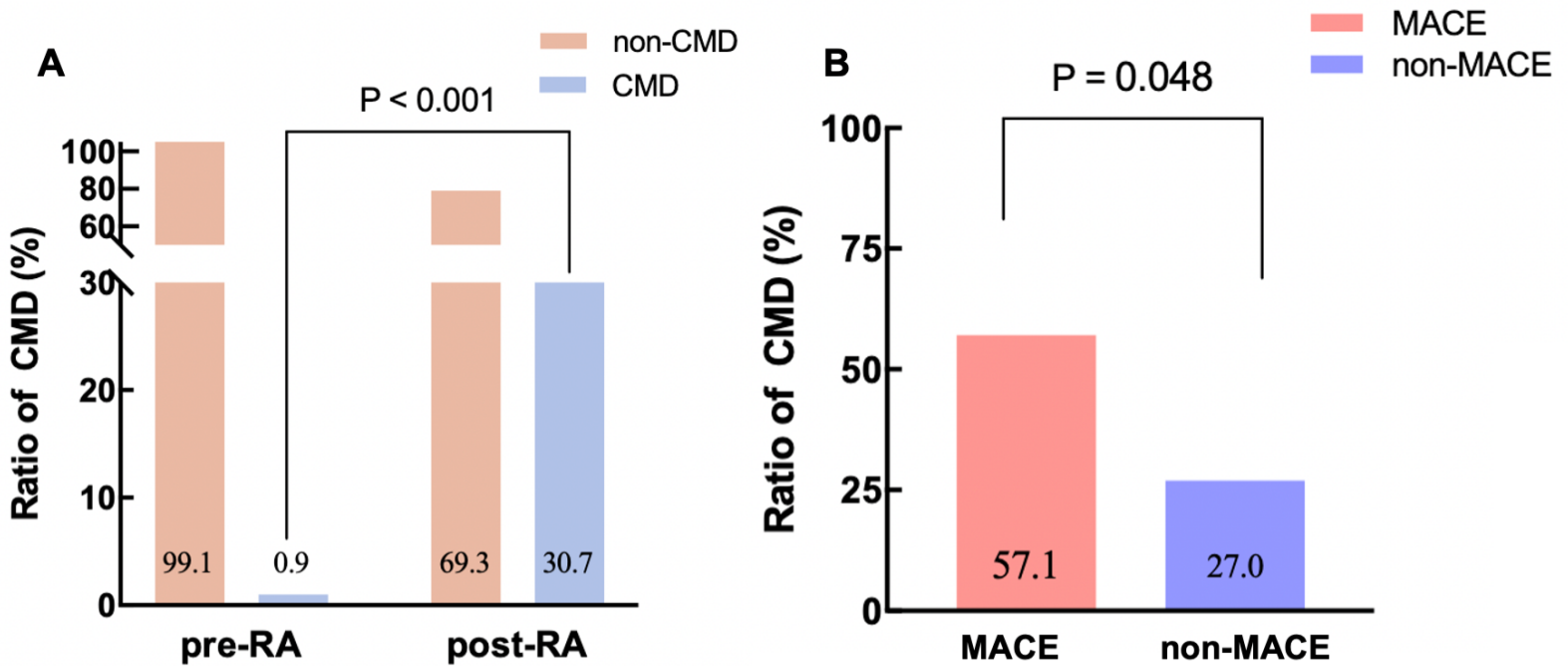
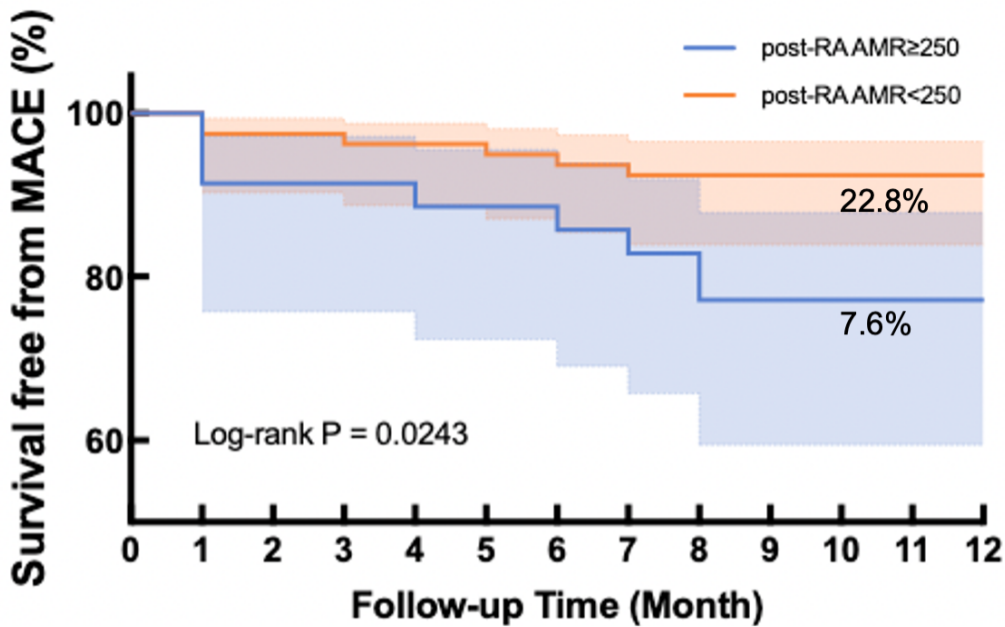


Fig. 3. **Temporal change of Quantitative flow ratio (QFR) and Angiographic microvascular resistance (AMR) in the target vessels** . The QFR and AMR significantly improved in patients from pre-RA to post-RA. QFR, Quantitative flow ratio; AMR, Angiographic microvascular resistance; RA, rotational atherectomy.



**Fig. 4. Coronary microvascular dysfunction(CMD) ratio of patients pre-RA vs. post-RA (A), and MACE vs. non-MACE. (A)** The ratio of patients who CMD in post-RA higher than pre-RA. **(B)** The ratio of patients who CMD in MACE higher than non-MACE. AMR, Angiographic microvascular resistance; RA, rotational atherectomy. CMD(AMR $\geq$ 2.5); non-CMD (AMR $<$ 2.5); MACE: all-cause death, nonfatal myocardial infarction, revascularization, angina-related rehospitalization.



No, at risk	1	2	3	4	5	6	7	8	9	10	11	12
Post-RA AMR ≥ 250	34	34	34	31	31	30	29	28	28	28	28	26
Post-RA AMR < 250	78	78	78	76	75	74	73	73	73	73	73	72

Fig. 5. **Kaplan–Meier curves for freedom from MACE stratified by post-RA AMR.** AMR, Angiographic microvascular resistance; RA, rotational atherectomy. MACE: all-cause death, nonfatal myocardial infarction, revascularization, angina-related rehospitalization