

# 1 **Delivery mode impacts gut bacteriophage colonization during infancy**

2 Poorani Subramanian<sup>\*</sup>, Hector N. Romero-Soto<sup>\*</sup>, David B. Stern, George L. Maxwell, Shira  
3 Levy & Suchitra K. Hourigan

4 <sup>\*</sup>These authors contributed equally

5 1. Poorani Subramanian. National Institute of Allergy and Infectious Diseases, National  
6 Institutes of Health, Bethesda, Maryland, United States.

7 [poorani.subramanian@nih.gov](mailto:poorani.subramanian@nih.gov)

8 2. Hector N. Romero-Soto. National Institute of Allergy and Infectious Diseases,  
9 National Institutes of Health, Bethesda, Maryland, United States.

10 [hector.romerosoto@nih.gov](mailto:hector.romerosoto@nih.gov)

11 3. David B. Stern. National Institute of Allergy and Infectious Diseases, National  
12 Institutes of Health, Bethesda, Maryland, United States. [dstern7760@gmail.com](mailto:dstern7760@gmail.com)

13 4. George L. Maxwell. Women's Service Line, Inova Health System, Falls Church,  
14 Virginia, United States. [george.maxwell@inova.org](mailto:george.maxwell@inova.org)

15 5. Shira Levy. National Institute of Allergy and Infectious Diseases, National Institutes  
16 of Health, Bethesda, Maryland, United States. [shira.levy@nih.gov](mailto:shira.levy@nih.gov)

17 6. Suchitra K. Hourigan. National Institute of Allergy and Infectious Diseases, National  
18 Institutes of Health, Bethesda, Maryland, United States. [suchitra.hourigan@nih.gov](mailto:suchitra.hourigan@nih.gov)

19 Corresponding author: Suchitra K. Hourigan. Laboratory of Host Immunity and Microbiome,  
20 National Institute of Allergy and Infectious Diseases, National Institutes of Health, Building 50,  
21 Rm 5511, 50 South Dr, Bethesda, Maryland, 20892. [suchitra.hourigan@nih.gov](mailto:suchitra.hourigan@nih.gov)

22 Brief report word count: 1657

23 **ABSTRACT**

24 **Background:**

25 Cesarean section delivery is associated with altered early-life bacterial colonization and later  
26 adverse inflammatory and immune health outcomes. Although gut bacteriophages can alter gut  
27 microbiome composition and impact host immune responses, little is known about how delivery  
28 mode impacts bacteriophage colonization over time. To begin to address this we examined how  
29 delivery mode affected bacteriophage colonization over the first two years of life.

30 **Results:**

31 Shotgun metagenomic sequencing was conducted on 272 serial stool samples from 55 infants,  
32 collected at 1-2 days of life and 2, 6, 12 and 24 months. 33/55 (60%) infants were born by  
33 vaginal delivery. DNA viruses were identified, and by host inference, 94% of the viral sequences  
34 were found to be bacteriophages. Alpha diversity of the virome was increased in vaginally  
35 delivered infants compared to cesarean section delivered infants at 2 months (Shannon index,  
36  $p=0.022$ ). Beta diversity significantly differed by delivery mode at 2, 6, and 12 months when  
37 stratified by peripartum antibiotic use (Bray–Curtis dissimilarity, all  $p<0.05$ ). Significant  
38 differentially abundant predicted bacteriophage hosts by delivery mode were seen at all time  
39 points. Moreover, there were differences in predicted bacteriophage functional gene abundances  
40 up to 24 months by delivery mode. Many of the functions considered to play a role in host  
41 response were increased in vaginal delivery.

42 **Conclusions:**

43 Clear differences in bacteriophage composition and function were seen by delivery mode over  
44 the first two years of life. Given that phages are known to affect host immune response, our

45 results suggest that future investigation into how delivery mode may lead to adverse  
46 inflammatory outcomes should not only include bacterial microbial colonization but also the  
47 potential role of bacteriophages and transkingdom interactions.

48 Keywords: bacteriophages; virome; infant; delivery mode; cesarean section; vaginal delivery;  
49 microbiome

50

51

52

53

54

55

56

57

58

59

60

61

62

63

## 64 **BACKGROUND**

65 Infancy represents a key window for gut microbiome establishment and plays a critical role in  
66 immune and metabolic education [1-3]. Disturbing the timing and order of microbial  
67 colonization can have lasting immune and inflammatory consequences [4, 5]. Cesarean section  
68 (CS) delivery represents an important factor perturbing the bacterial colonization of an infant and  
69 has been associated with later risk of several inflammatory conditions [6-8]. We read with  
70 interest the recent work of Shah *et al*, revealing previously unappreciated virome diversity in the  
71 infant gut microbiome at 1 year of age, and uncovering unknown viral species and virus family-  
72 level clades [9]. Although gut bacteriophages can alter microbiome composition and function  
73 and directly affect host immune responses [10-13], the effect of delivery mode has largely been  
74 limited to investigation of bacterial taxa. Transmission of the gut virome from mother to infant  
75 has shown lower transmission of viral communities than bacterial communities, and that virome  
76 colonization was determined more by dietary and environmental factors rather than direct  
77 maternal acquisition [14, 15]. In the first week of life, delivery mode did not determine how  
78 much of the virome was shared between mother and infant but some effect of delivery mode on  
79 bacteria-bacteriophage interaction was seen [14]. However, how delivery mode affects virome  
80 colonization longitudinally in infancy and early childhood has not been studied. Therefore,  
81 building on this previous work, we aimed to assess the impact of delivery mode on the infant gut  
82 virome over the first two years of life.

## 83 **METHODS**

84 **Subjects, sample, and clinical data collection:** Mothers were enrolled prenatally with informed  
85 consent in an Institutional Review Board approved longitudinal, prospective cohort study “The  
86 First 1000 Days of Life and Beyond” (Inova protocol #15-1804, WCG protocol #20120204).

87 Serial stool samples were collected from infants at 1-2 days after birth and at around 2, 6, 12, and  
88 24 months of age as previously described [16, 17]. All samples except for the 1-2 day samples  
89 were collected at home and mailed back to the lab, using previously validated methods and  
90 stored at -80°C until analysis [18]. Subjects for this current study were chosen from the larger  
91 cohort if stool samples were available at all time points. Demographic information, pregnancy  
92 details including mode of delivery mode and maternal antibiotic use, and infant data including  
93 feeding mode and antibiotic use were collected through a questionnaire, review of electronic  
94 medical records and serial surveys. Correlation between clinical and demographic factors with  
95 delivery mode was evaluated using the Chi-square test and two-sample t-test for categorical and  
96 continues variables respectively.

97 **DNA extraction and Shotgun metagenomic sequencing:** DNA was extracted from stool  
98 aliquots using the DNeasy PowerSoil Pro kit (Qiagen, Valencia, CA) following manufacturer's  
99 instructions. Shotgun metagenomic sequencing was performed on the Novaseq platform  
100 (Illumina, CA, USA). Positive controls (DNA sequences) and negative controls (DNA free  
101 water) were used.

102 **Virome and bacteriome analysis:** Read pairs were trimmed with BBDuk v38.0.1 and then  
103 assembled using metaSPAdes. Contigs were then processed following a standardized protocol  
104 using VirSorter, CheckV, and DRAM-v to identify viral sequences [19]. These sequences were  
105 then clustered using VContact. Bacterial hosts of phage sequences were identified using Phist.  
106 Putative genes identified by DRAM-v were annotated by aligning to NCBI's nr database using  
107 DIAMOND [20]. DRAM-v was also used to identify viral auxiliary metabolic genes (vAMGs).  
108 Taxonomic classification of the whole microbiota, including the bacteriome was done using  
109 Kraken v2. Beta diversity was compared between groups using PERMANOVA with the adonis

110 function from the vegan R package. All other statistics were done with linear mixed effects  
111 models using the lmerTest R package on its own and through the MaAsLin2 R package with log  
112 transformation to assess differential abundances of virome features.

## 113 **RESULTS AND DISCUSSION**

114 Shotgun metagenomic sequencing was conducted on 272 serial stool samples from 55 infants,  
115 collected at 1-2 days of life and 2,6,12, and 24 months. 33/55 (60%) infants were born by vaginal  
116 delivery (VD). CS delivered infants were more likely to have exposure to maternal peripartum  
117 antibiotics ( $p < 0.001$ ). There were no differences by delivery mode in sex, ethnicity, race, breast  
118 feeding and infant antibiotic use (Table S1).

119 From the virome analysis of the sequence data, we identified DNA viruses and attempted to  
120 resolve taxonomies. 9745 unique viral clusters were identified. Of these, only 2.2% could be  
121 identified, which were mainly bacteriophages. Clusters from the Siphoviridae family were the  
122 most common (64%), followed by Myoviridae (28%) and Podoviridae (8%). After aligning the  
123 putative gene sequences to NCBI's nr database, we had an increased classification of 94% of  
124 putative gene sequences on average for each time point. The number of putative viral genes  
125 increased over time ( $p = 5.05e-71$ , Fig. S1).

126 We then assessed the alpha and beta diversity of the virome by delivery mode and time. Alpha  
127 diversity (Shannon index) increased over time ( $p = 0.022$ , Fig. 1A). This differs from some  
128 previous studies which report decreasing bacteriophage diversity over the first few years of life,  
129 possibly due to differences in preparation of the samples and updated bioinformatics tools and  
130 databases utilized in our study [15, 21]. However other reports concur with our study and show  
131 an increasing diversity of bacteriophages in infancy [22, 23]. There was increased alpha diversity

132 in VD compared with CS at birth ( $p=0.0028$ ) and 2 months ( $p=0.009$ ), with significance  
133 remaining after adjusting for peripartum antibiotic use. No difference in alpha diversity by  
134 delivery mode was seen at later timepoints. Interestingly, the only other study examining the  
135 virome by delivery mode later in infancy in 20 infants at a single time point of 12 months, still  
136 found increased alpha diversity in those vaginally delivered at 1 year [24]. In our study the  
137 analysis at birth is somewhat limited as fewer CS samples could be used ( $n=6$ ) due to poor  
138 quality reads and/or no identifiable viral sequences. Mother-infant vertical transmission of the  
139 virome is thought to be lower than the bacteriome [14]; our results suggest this may be further  
140 lowered by CS. No differences were seen in alpha diversity by other clinical factors including  
141 breast feeding and infant antibiotic use, although others have reported that breast feeding can  
142 alter infant virome colonization [23]. Beta diversity (Bray-Curtis) differed by timepoint ( $p<$   
143  $0.005$ , Fig. 1B) but not overall by delivery mode. However, within each time point, beta diversity  
144 was significantly different by delivery mode when stratified by peripartum antibiotic use at 2  
145 ( $p=0.038$ ), 6 ( $p=0.002$ ), and 12 months ( $p=0.039$ ).

146 We also assessed the phage abundances and putative host bacterial taxa abundance over time and  
147 delivery mode. The vast majority of viral clusters were from bacteriophages (94%). 10 identified  
148 phages were shown to significantly differ by delivery mode ( $FDR < 0.1$ ) at 2 months (Fig. 2A),  
149 but not at later timepoints; all were higher in VD than CS. Certain predicted host bacterial  
150 species differed significantly in abundance by delivery mode at each time point after birth, with  
151 an increased number of significantly differentially abundant hosts identified in VD compared  
152 with CS up to 12 months (Fig. 2B). Notably, phages belonging to the *Bacteroidaceae* hosts were  
153 increased in VD at 2 and 6 months, with the bacterial taxa *Bacteroides* known to be increased in  
154 VD compared to CS infants in early life [25]. At 24 months, there were more differentially

155 abundant phage hosts predicted in CS compared to VD. The predicted host bacterial taxa  
156 correlated closely with the bacterial abundance of the whole microbiome at all timepoints (Fig.  
157 S2).

158 We then attempted to assess the predicted functional genes and pathways of the identified virome  
159 over time and by delivery mode. Very few functional pathways were identified and did not differ  
160 by delivery mode. However, when looking at vAMGs, differences were found by delivery mode  
161 at birth, 2, 6, and 24 months. Of the differentially abundant gene sequences, only fabG,  
162 associated with sugar metabolism in pathogenic bacteria, was found to be in higher abundance in  
163 CS than VD at 2m [26]. All others were higher in abundance in VD compared to CS and  
164 included ENO, tkA, Glycos\_transf\_2, PGD, UGDH, ABC.CD.A and RPL19, genes associated  
165 with human host response. Others of note, essential to bacteria, included SusC, ironN, DNMT1  
166 and UGP2. Full results are shown in Figure S3 and Table S2.

167 The reasons for the difference in bacteriophage colonization and function by delivery mode up to  
168 24 months is still yet to be determined. While differential acquisition of the maternal virome is  
169 possible, as infants delivered by CS bypass the birth canal and maternal vaginal and perineal  
170 microbiome exposure, studies suggest that maternal to infant transmission of the virome in early  
171 life is already very low [14, 15]. It has been suggested dietary factors such as breastfeeding  
172 contribute to early life virome colonization, however there were no differences in breastfeeding  
173 by delivery mode in our study (Table S1). It is likely that the differential bacterial colonization  
174 known to occur by delivery mode also affects bacteriophage differences, as evidenced by  
175 predicted bacteriophage hosts closely resembling whole microbiome bacterial composition (Fig.  
176 S2) [6, 27-29]. In addition, peripartum antibiotic exposure, which is higher in CS delivery, may



177 play a role in bacteriophage colonization as suggested by a difference in virome composition  
178 (beta diversity) by delivery mode when stratified by peripartum antibiotic use.

179 Although to our knowledge, our study is the first to examine the impact of delivery mode on  
180 infant virome colonization over the first 2 years of life, there are several limitations. Only DNA  
181 viruses were examined and so how delivery mode may impact gut RNA viruses remains  
182 unknown. Additionally, maternal vaginal and stool virome were not assessed and so maternal to  
183 infant transmission by delivery mode cannot be assessed.

## 184 **CONCLUSIONS**

185 Clear differences in bacteriophage composition and function were seen by delivery mode over  
186 the first two years of life. Given that phages are known to affect host immune response, our  
187 results suggest that future investigation into how delivery mode may lead to adverse  
188 inflammatory outcomes should not only include bacterial microbial colonization but also the  
189 potential role of bacteriophages and transkingdom interactions.

## 190 **AVAILABILITY OF DATA AND MATERIALS**

191 The data sets generated and/or analyzed in the current study are available in the NCBI SRA  
192 repository

193 (<https://dataview.ncbi.nlm.nih.gov/object/PRJNA988496?reviewer=usujuv2ng73h0ftdbiavm8soe9>  
194 [8](#)) under BioProject number: PRJNA988496.

## 195 **ABBREVIATIONS**

196 **CS:** Cesarean section

197 **VD:** Vaginal delivery

198 **FDR:** False discovery rate

199 **vAMGs**: Viral auxiliary metabolic genes  
200 **fabG**: 3-oxoacyl-[acyl-carrier-protein] reductase FabG  
201 **ENO**: Enolase  
202 **tkA**: Transketolase  
203 **Glycos\_transf\_2**: Glycosyl transferase family 2  
204 **PGD**: 6-phosphogluconate dehydrogenase  
205 **UGDH**: UDP-glucose 6-dehydrogenase  
206 **ABC.CD.A**: Putative ABC transport system ATP-binding protein  
207 **RPL19**: Large subunit ribosomal protein L19  
208 **SusC**: TonB-dependent starch-binding outer membrane protein SusC  
209 **iroN**: Iron complex outermembrane receptor protein  
210 **DNMT1**: DNA (cytosine-5-)-methyltransferase  
211 **UGP2**: UTP--glucose-1-phosphate uridylyltransferase

212

## 213 REFERENCES

- 214 1. Gensollen T, Iyer SS, Kasper DL, Blumberg RS: **How colonization by microbiota in**  
215 **early life shapes the immune system.** *Science* 2016, **352**(6285):539-544.  
216 2. Jian C, Carpén N, Helve O, de Vos WM, Korpela K, Salonen A: **Early-life gut**  
217 **microbiota and its connection to metabolic health in children: Perspective on**  
218 **ecological drivers and need for quantitative approach.** *EBioMedicine* 2021,  
219 **69**:103475.  
220 3. Brodin P: **Immune-microbe interactions early in life: A determinant of health and**  
221 **disease long term.** *Science* 2022, **376**(6596):945-950.  
222 4. Sprockett D, Fukami T, Relman DA: **Role of priority effects in the early-life assembly**  
223 **of the gut microbiota.** *Nat Rev Gastroenterol Hepatol* 2018, **15**(4):197-205.  
224 5. Cox LM, Yamanishi S, Sohn J, Alekseyenko AV, Leung JM, Cho I, Kim SG, Li H, Gao  
225 Z, Mahana D *et al*: **Altering the intestinal microbiota during a critical developmental**  
226 **window has lasting metabolic consequences.** *Cell* 2014, **158**(4):705-721.  
227 6. Bokulich NA, Chung J, Battaglia T, Henderson N, Jay M, Li H, A DL, Wu F, Perez-  
228 Perez GI, Chen Y *et al*: **Antibiotics, birth mode, and diet shape microbiome**  
229 **maturation during early life.** *Sci Transl Med* 2016, **8**(343):343ra382.  
230 7. Słabuszewska-Jóźwiak A, Szymański JK, Ciebiera M, Sarecka-Hujar B, Jakiel G:  
231 **Pediatrics Consequences of Caesarean Section-A Systematic Review and Meta-**  
232 **Analysis.** *Int J Environ Res Public Health* 2020, **17**(21).

- 233 8. Kuhle S, Tong OS, Woolcott CG: **Association between caesarean section and**  
234 **childhood obesity: a systematic review and meta-analysis.** *Obes Rev* 2015, **16**(4):295-  
235 303.
- 236 9. Shah SA, Deng L, Thorsen J, Pedersen AG, Dion MB, Castro-Mejía JL, Silins R, Romme  
237 FO, Sausset R, Jessen LE *et al*: **Expanding known viral diversity in the healthy infant**  
238 **gut.** *Nat Microbiol* 2023, **8**(5):986-998.
- 239 10. Rasmussen TS, Mentzel CMJ, Kot W, Castro-Mejía JL, Zuffa S, Swann JR, Hansen LH,  
240 Vogensen FK, Hansen AK, Nielsen DS: **Faecal virome transplantation decreases**  
241 **symptoms of type 2 diabetes and obesity in a murine model.** *Gut* 2020, **69**(12):2122-  
242 2130.
- 243 11. Fluckiger A, Daillère R, Sassi M, Sixt BS, Liu P, Loos F, Richard C, Rabu C, Alou MT,  
244 Goubet AG *et al*: **Cross-reactivity between tumor MHC class I-restricted antigens**  
245 **and an enterococcal bacteriophage.** *Science* 2020, **369**(6506):936-942.
- 246 12. Dufour N, Delattre R, Chevallereau A, Ricard JD, Debarbieux L: **Phage Therapy of**  
247 **Pneumonia Is Not Associated with an Overstimulation of the Inflammatory**  
248 **Response Compared to Antibiotic Treatment in Mice.** *Antimicrob Agents Chemother*  
249 2019, **63**(8).
- 250 13. Champagne-Jorgensen K, Luong T, Darby T, Roach DR: **Immunogenicity of**  
251 **bacteriophages.** *Trends Microbiol* 2023.
- 252 14. Maqsood R, Rodgers R, Rodriguez C, Handley SA, Ndao IM, Tarr PI, Warner BB, Lim  
253 ES, Holtz LR: **Discordant transmission of bacteria and viruses from mothers to**  
254 **babies at birth.** *Microbiome* 2019, **7**(1):156.
- 255 15. Walters WA, Granados AC, Ley C, Federman S, Stryke D, Santos Y, Haggerty T,  
256 Sotomayor-Gonzalez A, Servellita V, Ley RE *et al*: **Longitudinal comparison of the**  
257 **developing gut virome in infants and their mothers.** *Cell Host Microbe* 2023,  
258 **31**(2):187-198.e183.
- 259 16. Mani J, Levy S, Angelova A, Hazrati S, Fassnacht R, Subramanian P, Richards T,  
260 Niederhuber JE, Maxwell GL, Hourigan SK: **Epidemiological and microbiome**  
261 **associations of Clostridioides difficile carriage in infancy and early childhood.** *Gut*  
262 *Microbes* 2023, **15**(1):2203969.
- 263 17. Nashed L, Mani J, Hazrati S, Stern DB, Subramanian P, Mattei L, Bittinger K, Hu W,  
264 Levy S, Maxwell GL *et al*: **Gut microbiota changes are detected in asymptomatic**  
265 **very young children with SARS-CoV-2 infection.** *Gut* 2022, **71**(11):2371-2373.
- 266 18. McDonald D, Hyde E, Debelius JW, Morton JT, Gonzalez A, Ackermann G, Aksenov  
267 AA, Behsaz B, Brennan C, Chen Y *et al*: **American Gut: an Open Platform for Citizen**  
268 **Science Microbiome Research.** *mSystems* 2018, **3**(3).
- 269 19. Guo J, Vik D, Adjie Pratama A, Roux S, Sullivan M: **Viral sequence identification SOP**  
270 **with VirSorter2 V.3.** *protocolsio*.
- 271 20. Buchfink B, Reuter K, Drost HG: **Sensitive protein alignments at tree-of-life scale**  
272 **using DIAMOND.** *Nat Methods* 2021, **18**(4):366-368.
- 273 21. Lim ES, Zhou Y, Zhao G, Bauer IK, Droit L, Ndao IM, Warner BB, Tarr PI, Wang D,  
274 Holtz LR: **Early life dynamics of the human gut virome and bacterial microbiome in**  
275 **infants.** *Nat Med* 2015, **21**(10):1228-1234.
- 276 22. Beller L, Deboutte W, Vieira-Silva S, Falony G, Tito RY, Rymenans L, Yinda CK,  
277 Vanmechelen B, Van Espen L, Jansen D *et al*: **The virota and its transkingdom**

- 278 **interactions in the healthy infant gut.** *Proc Natl Acad Sci U S A* 2022,  
279 **119**(13):e2114619119.
- 280 23. Liang G, Zhao C, Zhang H, Mattei L, Sherrill-Mix S, Bittinger K, Kessler LR, Wu GD,  
281 Baldassano RN, DeRusso P *et al*: **The stepwise assembly of the neonatal virome is**  
282 **modulated by breastfeeding.** *Nature* 2020, **581**(7809):470-474.
- 283 24. McCann A, Ryan FJ, Stockdale SR, Dalmasso M, Blake T, Ryan CA, Stanton C, Mills S,  
284 Ross PR, Hill C: **Viromes of one year old infants reveal the impact of birth mode on**  
285 **microbiome diversity.** *PeerJ* 2018, **6**:e4694.
- 286 25. Mitchell CM, Mazzoni C, Hogstrom L, Bryant A, Bergerat A, Cher A, Pochan S, Herman  
287 P, Carrigan M, Sharp K *et al*: **Delivery Mode Affects Stability of Early Infant Gut**  
288 **Microbiota.** *Cell Rep Med* 2020, **1**(9):100156.
- 289 26. Zhao L, Huang Y, Lu L, Yang W, Huang T, Lin Z, Lin C, Kwan H, Wong HLX, Chen Y  
290 *et al*: **Saturated long-chain fatty acid-producing bacteria contribute to enhanced**  
291 **colonic motility in rats.** *Microbiome* 2018, **6**(1):107.
- 292 27. Wong WSW, Sabu P, Deopujari V, Levy S, Shah AA, Clemency N, Provenzano M,  
293 Saadoon R, Munagala A, Baker R *et al*: **Prenatal and Peripartum Exposure to**  
294 **Antibiotics and Cesarean Section Delivery Are Associated with Differences in**  
295 **Diversity and Composition of the Infant Meconium Microbiome.** *Microorganisms*  
296 2020, **8**(2).
- 297 28. Bogaert D, van Beveren, G., de Koff, E., Lusarreta Parga, P., Balcazar Lopez, C.,  
298 Koppensteiner, L., Clerc, M., Hasrat, R., Arp, K., Ling Chu, M, de Groot, P., Sanders,  
299 E, Van Houten, M., de Steenhuijsen Pijters, W.: **Mother-infant microbiota**  
300 **transmission and infant microbiota development across multiple body sites.** *Cell*  
301 *Host Microbe* 2023.
- 302 29. Bäckhed F, Roswall J, Peng Y, Feng Q, Jia H, Kovatcheva-Datchary P, Li Y, Xia Y, Xie  
303 H, Zhong H *et al*: **Dynamics and Stabilization of the Human Gut Microbiome during**  
304 **the First Year of Life.** *Cell Host Microbe* 2015, **17**(5):690-703.

305

## 306 ACKNOWLEDGEMENTS

307 Inova expresses its appreciation to the Fairfax County in VA, which has supported Inova's  
308 research projects with annual funding from its Contributory Fund (Fund 10030, Maxwell). This  
309 work also used the Office of Cyber Infrastructure and Computational Biology High Performance  
310 Computing cluster at NIAID, Bethesda, MD.

## 311 FUNDING

312 This work was supported by a National Institute of Child Health and Human Development of the  
313 National Institutes of Health K23 award (No. K23HD099240, Hourigan) and the National

314 Institute of Allergy and Infectious Diseases (NIAID) of the National Institutes of Health under  
315 the Intramural Research Program (Hourigan) and BCBB Support Services Contract  
316 HHSN316201300006W/75N93022F00001 to Medical Science & Computing (Subramanian).  
317 The funder had no role in the design and conduct of the study; collection, management, analysis,  
318 and interpretation of the data; preparation, review, or approval of the manuscript; and decision to  
319 submit the manuscript for publication. The content is solely the responsibility of the authors and  
320 does not necessarily represent the official views of the National Institutes of Health.

### 321 **AUTHOR INFORMATION**

322 Poorani Subramanian and Hector N. Romero-Soto contributed equally to this paper.

#### 323 **Authors and Affiliations:**

324 National Institute of Allergy and Infectious Diseases, National Institutes of Health, Bethesda,  
325 Maryland, USA

326 Poorani Subramanian, Hector N. Romero-Soto, David B. Stern, Shira Levy & Suchitra K.  
327 Hourigan

328 Women's Service Line, Inova Health System, Falls Church, Virginia, USA

329 George L. Maxwell

#### 330 **Contributions:**

331 S.K.H., G.L.M. and S.L. conceived and designed the project. All authors acquired, analyzed, or  
332 interpreted data from the study. P.S., H.N.R.-S. and D.B.S. performed statistical analysis. S.K.H.  
333 and G.L.M. obtained funding for the project. S.K.H. supervised the project. P.S., H.N.R.-S. and  
334 S.K.H. wrote the original draft. All authors reviewed the manuscript for important intellectual  
335 content and approved the final manuscript.

#### 336 **Corresponding author:**

337 Suchitra K. Hourigan. Laboratory of Host Immunity and Microbiome, National Institute of  
338 Allergy and Infectious Diseases, National Institutes of Health, Building 50, Rm 5511, 50 South  
339 Dr, Bethesda, Maryland, 20892. suchitra.hourigan@nih.gov

340 **ETHICS DECLARATIONS**

341 **Ethics approval and consent to participate:**

342 The study was approved by an Institutional Review Board (Inova protocol #15-1804, WCG  
343 protocol #20120204) and all participants provided written informed consent to participate.

344 **Consent for publication:**

345 Not applicable.

346 **Competing interests:**

347 The authors declare that they have no competing interests.

348

349

350

351

352

353

354

355

356 **Figure Legends**

357 **Figure 1: A:** Alpha diversity (Shannon index) of the virome over time and by delivery mode. **B:**  
358 Beta diversity (Bray–Curtis dissimilarity) of the virome over time.

359 **Figure 2: A:** Significantly differentially abundant bacteriophages by delivery mode at 2 months.  
360 **B:** Significantly differentially abundant predicted bacterial hosts over time and by delivery  
361 mode.

362 **SUPPLEMENTARY INFORMATION:**

363 **Table S1:** Demographic and clinical factors stratified by delivery mode.

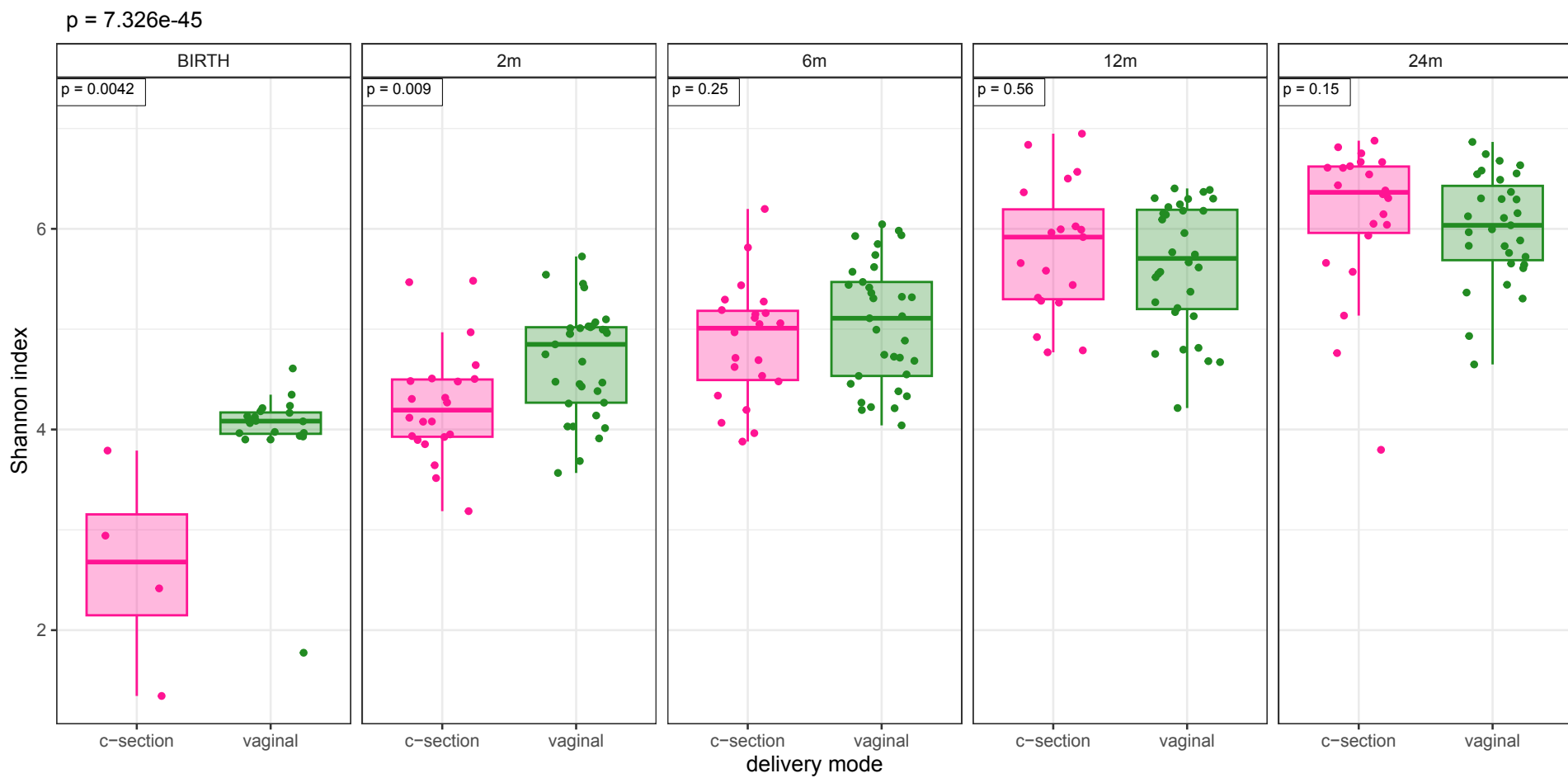
364 **Table S2:** Functions of differentially abundant viral auxiliary metabolic genes (vAMGs) by  
365 delivery mode

366 **Figure S1:** Identified viral genes over time.

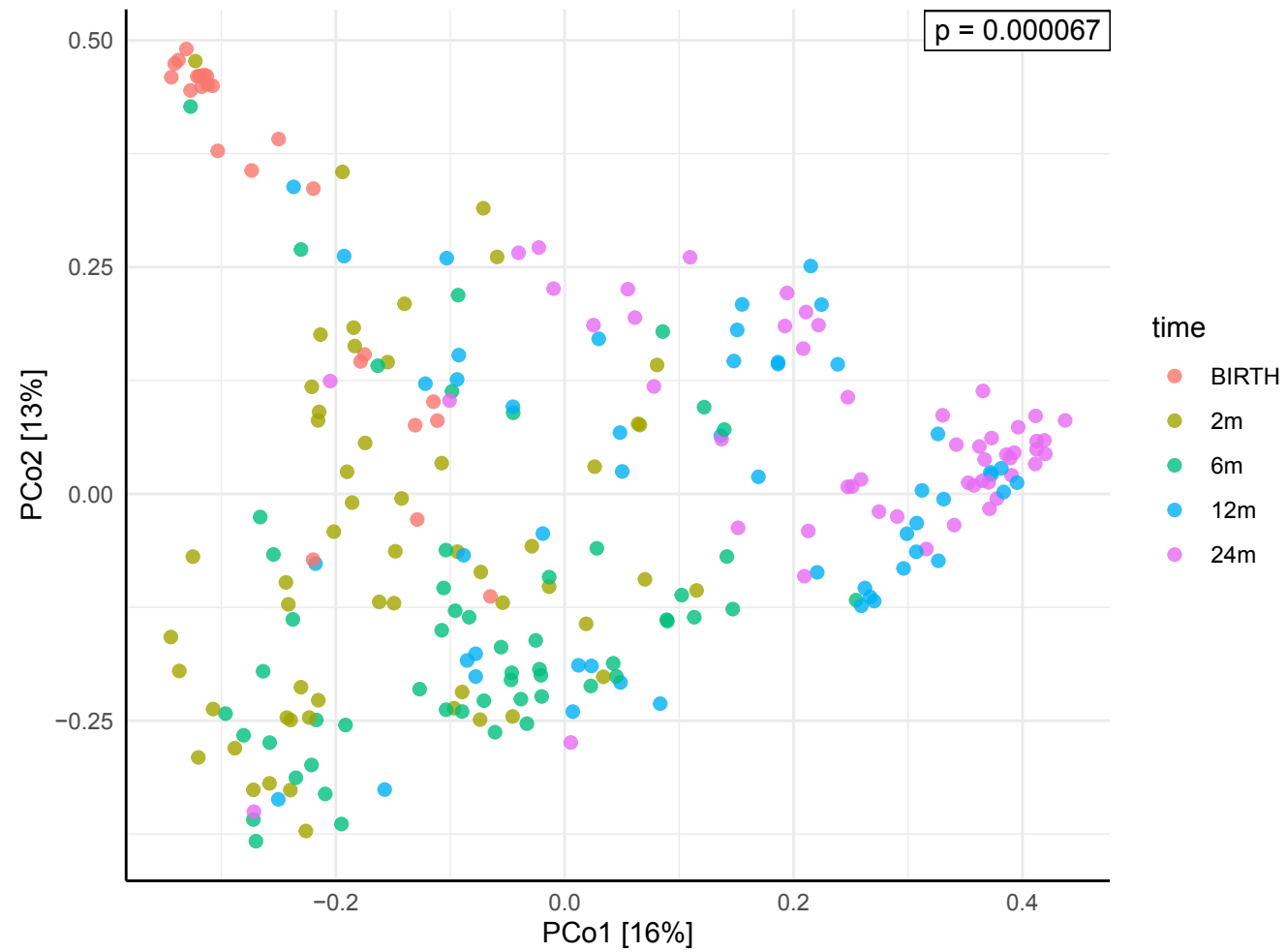
367 **Figure S2:** Predicted host bacterial abundance and whole microbiome bacterial abundance at a  
368 phylum level

369 **Figure S3A-D:** Differentially abundant viral auxiliary metabolic genes (vAMGs) by delivery  
370 mode and timepoint.

A

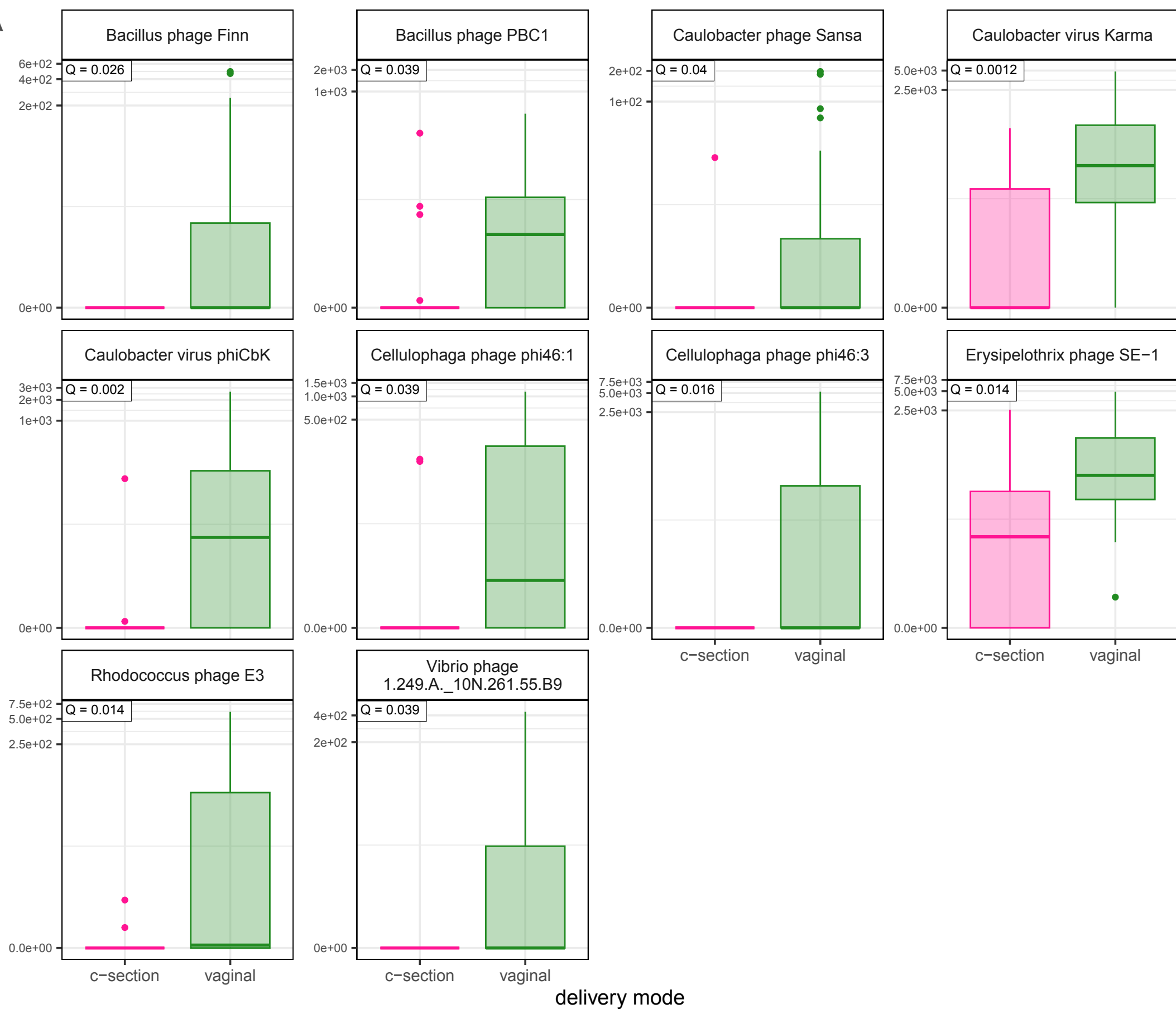


B



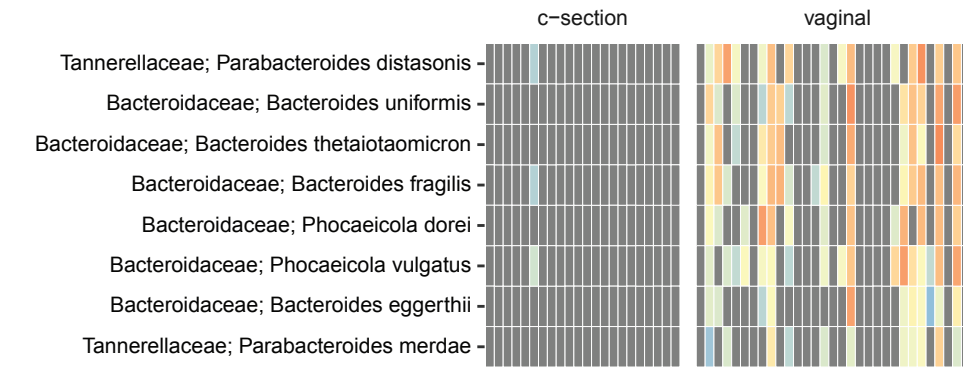


A

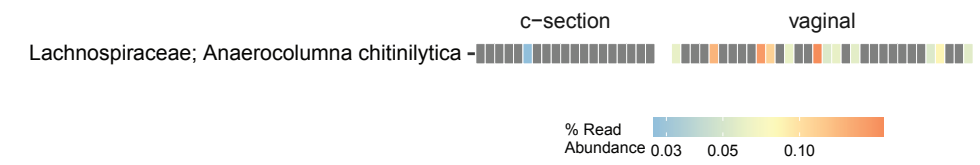


B

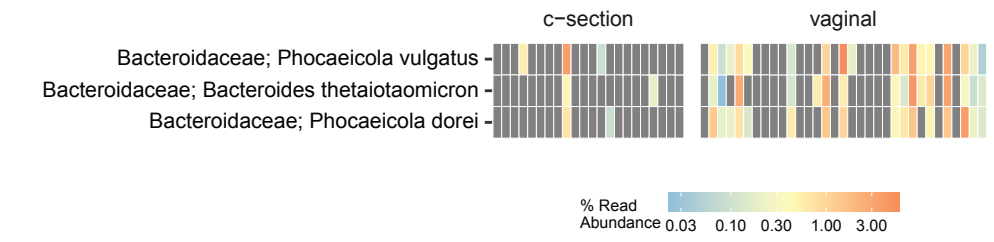
2m



12m



6m



24m

