

1 **Monitoring ESBL-*Escherichia coli* in Swiss wastewater between** 2 **November 2021 and November 2022: insights into population** 3 **carriage**

4 Sheena Conforti^{1,2}, Aurélie Holschneider¹, Émile Sylvestre¹, Timothy R. Julian^{1,3,4}

5

6 **Affiliations:**

7 1. Eawag, Swiss Federal Institute of Aquatic Science and Technology, Dübendorf CH-8600, Switzerland

8 2. Department of Biosystems Science and Engineering, ETH Zürich, 4051 Basel, Switzerland

9 3. Swiss Tropical and Public Health Institute, 4051 Basel, Switzerland

10 4. University of Basel, 4055 Basel, Switzerland

11

12 **Abstract**

13 **Background:** Antimicrobial resistance (AMR) poses a global health threat, causing millions of deaths
14 annually, with expectations of increased impact in the future. Wastewater surveillance offers a cost-
15 effective, non-invasive tool to understand AMR carriage trends within a population.

16 **Aim:** We monitored extended-spectrum β -lactamase producing *Escherichia coli* (ESBL-*E. coli*) weekly
17 in influent wastewater from six wastewater treatment plants (WWTPs) in Switzerland (November 2021
18 to November 2022) to investigate spatio-temporal variations, explore correlations with environmental
19 variables, develop a predictive model for ESBL-*E. coli* carriage in the community, and detect the most
20 prevalent ESBL-genes.

21 **Methods:** We cultured total and ESBL-*E. coli* in 300 wastewater samples to quantify daily loads and
22 percentage of ESBL-*E. coli*. Additionally, we screened 234 ESBL-*E. coli* isolates using molecular-
23 methods for the presence of 18 ESBL-gene families.

24 **Results:** We found a population-weighted mean percentage of ESBL-*E. coli* of 1.9% (95%CI 1.8%,
25 2%) across all sites and weeks, which can inform ESBL-*E. coli* carriage. Concentrations of ESBL-*E. coli*
26 varied across WWTPs and time, with higher values observed in WWTPs serving larger populations.
27 Recent precipitations (previous 24-/96-hours) showed no significant association with ESBL-*E. coli*,
28 while temperature occasionally had a moderate impact ($p < 0.05$, correlation coefficients approximately
29 0.40) in some locations. We identified *bla*_{CTX-M-1}, *bla*_{CTX-M-9} and *bla*_{TEM} as the predominant ESBL-gene
30 families.

31 **Conclusions:** Our study demonstrates that wastewater-based surveillance of culturable ESBL-*E. coli*
32 provides insights into AMR trends in Switzerland and may also inform resistance. These findings
33 establish a foundation for long-term, nationally established monitoring protocols and provide
34 information that may help inform targeted public health interventions.

35 Introduction

36 Antimicrobial resistance (AMR) is listed as one of the top ten most serious global health threats by the
37 World Health Organization [1]. In 2019, an estimated five million deaths globally were associated with
38 AMR infections [2]. Among the factors contributing to these fatalities is the transmission of AMR, with
39 environmental pathways playing a significant role in both the spread of antibiotic-resistant bacteria
40 (ARB) and the acquisition of antibiotic-resistant genes (ARGs) by clinically relevant pathogens [3].

41 ESBL-*E. coli* are resistant to clinically important antimicrobial drugs and are considered important
42 vectors in the transmission of ARGs [4]. ESBL-*E. coli* are transmissible through human and animal
43 faecal pollution and are commonly found in inflow wastewater worldwide [5-8]. Wastewater
44 monitoring provides a comprehensive perspective of AMR carried across a human population [9,10],
45 and it is more advantageous than the current patient sampling since it avoids privacy and ethical
46 concerns related to the collection of patient data [11]. A centralized monitoring of AMR in wastewater
47 can reflect community-level dissemination of AMR, providing understanding of the evolution and the
48 spread of clinically relevant ARBs [11]. A previous study on carbapenemase-producing *E. coli* (CPE)
49 conducted in Dutch municipal wastewater showed its sensitivity in estimating CPE prevalence in
50 humans [12], suggesting that wastewater monitoring can inform prevalence rates and dynamics of
51 other fecally shed antimicrobial resistant bacteria such as ESBL-*E. coli*.

52 Recently, ESBL-producing *Enterobacteriaceae* were monitored on a monthly scale in municipal
53 wastewater of Basel, Switzerland [13]. Building on this, a centralized wastewater monitoring system of
54 AMR and ARBs in the Swiss population may enable public health officials to better understand
55 challenges associated with antimicrobial resistance and to target interventions more effectively.
56 Previous studies showed that antibiotic resistance prevalence in bacteria from wastewater follows
57 similar trends to the rates monitored in clinical environments [5,6,8,14].

58 Trends in ESBL-*E. coli* prevalence in wastewater are likely reflective of trends in ESBL-*E. coli* carriage
59 in the population served. That is, concentrations of ESBL-*E. coli* in wastewater are a function of the
60 prevalence of people carrying ESBL-*E. coli* in the catchment, as well as the proportion of ESBL-*E. coli*
61 among all *E. coli* shed by carriers. However, concentrations may also be influenced by in sewer fate
62 and transport processes, including temperature dependent decay and potential non-human sources of
63 ESBL-*E. coli* entering combined sewers from urban water run-off [15]. Temporal trends in ESBL-*E. coli*
64 concentrations may therefore reflect changes in carriage within the population, changes in shedding
65 load dynamics, or environmental impacts on fate and transport. Previous studies of ESBL-*E. coli*
66 prevalence report both, significant variations in ESBL-*E. coli* prevalence between months [13,16] as
67 well as relatively stable percentages over time [6,4,17,18].

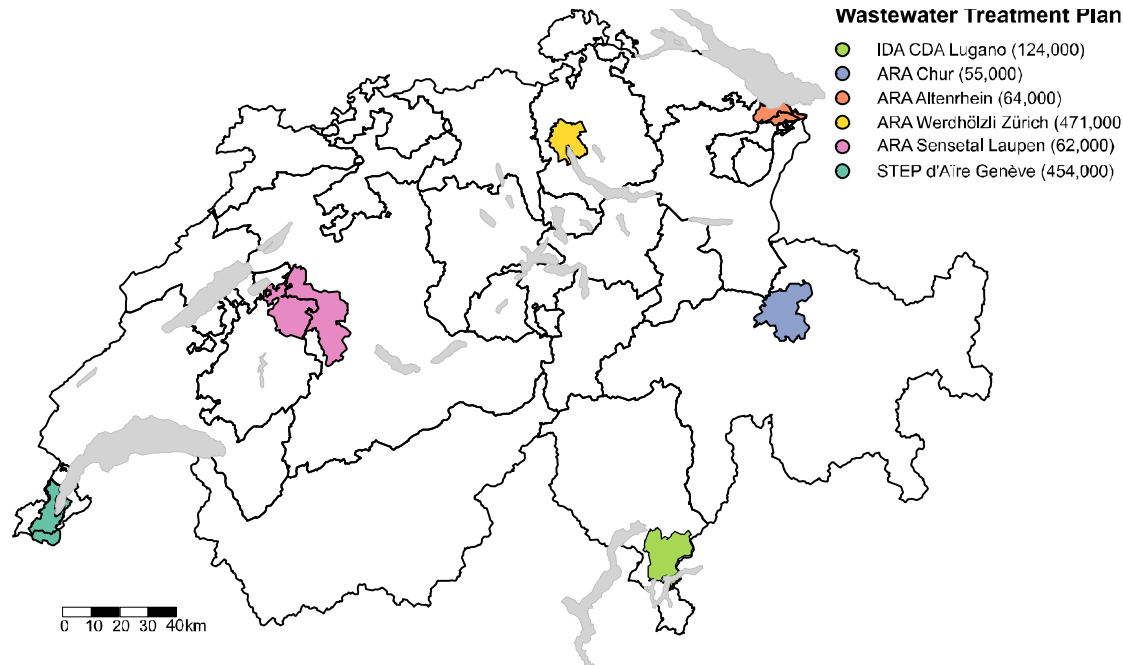
68 In this one-year longitudinal study, we monitored ESBL-*E. coli* in Swiss municipal wastewater weekly
69 from six WWTPs. Using culture-based methods, we investigated national spatio-temporal variations of
70 ESBL-*E. coli*, developed a predictive model for ESBL-*E. coli* carriage, explored ESBL-*E. coli* correlations
71 with environmental variables, and assessed monitoring frequency impact on ESBL-*E. coli*
72 concentrations estimation. Molecular methods characterized the presence of ESBL genes in 234
73 isolates. Our findings offer insights into ESBL-*E. coli* prevalence, distribution, and associated genes in
74 Swiss wastewater, and may act as a basis for long-term wastewater-based surveillance of AMR.

75

76 **Methods**

77 **Samples collection**

78 Wastewater samples were collected from six wastewater treatment plants (WWTPs) in Switzerland
79 serving an estimated 1.23 million residents (14% of the population): ARA Altenrhein (64,000
80 residents), ARA Chur (55,000 residents), STEP d'Aire Genève (454,000 residents), ARA Sensetal
81 Laupen (62,000 residents), IDA CDA Lugano (124,000 residents), and ARA Werdhölzli Zürich (471,000
82 residents) (Figure 1). Samples were collected weekly over a 1-year period from November 16, 2021,
83 to November 29, 2022 (Supplementary Table S1). Wastewater was sampled using 24-hr flow-
84 proportional composite sampling and transported to Eawag (Dübendorf, CH) in high-density
85 polyethylene bottles with ice packs, stored at 4°C and processed within 48 hours.



86

87 **Figure 1: Geographic distribution, catchment area, and number of people served at each**
88 **of the six investigated wastewater treatment plants in Switzerland.**

89

90 **Enumeration of total and ESBL-*E. coli***

91 To enumerate total *E. coli*, wastewater samples were serially diluted 100-fold with sterile 0.9% NaCl
92 and 100µl were plated on CHROMagar Orientation chromogenic media (CHROMagar™, bio-Mérieux,
93 Marcy-l'Étoile, France). To enumerate ESBL-*E. coli*, 100µl of undiluted wastewater samples were
94 plated on CHROMagar ESBL chromogenic media (CHROMagar™ ESBL, bio-Mérieux, Marcy-l'Étoile,
95 France). Samples were plated in single replicates until February 08, 2022, and afterward in duplicates.
96 Plates were incubated at 37°C for 24 hours. Then, colony concentrations were determined by counting
97 the dark pink to reddish colonies on the CHROMagar Orientation for total *E. coli* and CHROMagar ESBL
98 for ESBL- *E. coli*.

99 **Isolation, culturing and DNA extraction of ESBL- *E. coli***

100 A subset of presumptive ESBL-*E. coli* colonies were isolated every four weeks from CHROMagar ESBL
101 plates. Specifically, three colonies per WWTP were streaked on LB Agar (Lennox) and incubated at
102 37°C for 20-24 hours. Single colonies were liquid cultured in Luria Broth (AppliChem), and DNA was
103 extracted from 100µl of enriched liquid culture by boiling it at 100°C for one hour. DNA was stored at
104 -20°C for subsequent analyses.

105 **Screening of ESBL-genes in ESBL-*E. coli* using dMLA**

106 A total of 234 ESBL-*E. coli* isolates underwent screening for 18 ESBL-gene families using the digital
107 Multiplex Ligation Assay (dMLA) [19]. Three screenings were conducted to cover all isolates, each
108 including three no template controls (NTC) with DNA-/RNAse free water. The 72 half-probes used in
109 the dMLA were mixed to achieve a final concentration of 1 μ M each. Subsequent ligation and PCR
110 followed the previously described method [19] and were carried out in 96-well PCR Skirted plates
111 (Milian) sealed with SilverSeal Sealer (Greiner Bio-One GmbH). Each well contained only one isolate or
112 control sample. The PCR products (4 μ L from each) , barcoded during the dMLA protocol, were pooled
113 and purified using the Wizard® Genomic DNA Purification Kit. The pooled purified PCR products were
114 then sent for Illumina MiSeq sequencing (Eurofins Genomics, GmbH, Ebersberg, Germany) with 150bp
115 paired-end reads.

116 **dMLA sequence data analysis**

117 NGS reads in FASTQ format were processed using Nextflow (Seqera Labs, v21.10.0.5640). The
118 nsearch software [20] filtered reads with a minimum identity threshold of 0.8 and allowed one
119 expected error per base pair. A Python (v3.9.2) code expanded degenerated sequences, retained
120 matches to target probe-pairs, and classified reads by forward primer barcode and target probe-pair.
121 Target quantification was performed in R (v4.1.1). To determine the detection limits for dMLA, false
122 positive signals from the three NTC samples in each screening were analysed as previously reported
123 [19]. To limit false positives, genes were only considered present if detectable by both probe-pairs,
124 genes positive to one probe-pair were considered negative.

125 **Statistical analyses**

126 All analyses were performed in R (v4.1.1) and R Studio (v2022.12.0.353). The loads (CFUs/(person-
127 day)) of total- and ESBL-*E. coli* were calculated by normalizing estimated concentrations by the
128 corresponding daily flow rate (m³/day) of the WWTP and the number of residents connected to the
129 WWTP. For both the percentage of ESBL-*E. coli* and the loads, the average was computed when
130 sample duplicates were available to both display and analyse the data. Statistical analysis used
131 Kruskal-Wallis non-parametric tests with Dunn's pairwise comparisons and Bonferroni adjustment to
132 assess differences in ESBL-*E. coli* percentages and loads among WWTPs and across months within
133 each WWTP.

134 The Spearman's correlation coefficient was employed to assess the relationship between ESBL-*E. coli*
135 percentage, total- and ESBL-*E. coli* loads, and the corresponding environmental variables
136 (precipitation, temperature). An alpha value of 0.05 was used to determine significance of
137 associations, with p-values corrected using the Bonferroni adjustment. Precipitation data (daily total
138 and cumulative sum over 96 hours) and air temperature data (daily average from 6-18 UTC) were
139 obtained from the Federal Office of Meteorology and Climatology MeteoSwiss (IDAWEB 1.3.5.0
140 ©2016MeteoSwiss).

141 The impact of monitoring frequency on estimating the mean ESBL-*E. coli* percentage was assessed
142 using a Bayesian inference method [21]. Candidate models, gamma and log-normal distributions,
143 were selected to describe temporal variations in ESBL-*E. coli* percentage, and their fit was compared
144 using the Bayesian Deviance Information Criterion. In comparing candidate models, the gamma
145 distribution generally provided a better fit than the log-normal distribution at most sites, leading to its
146 selection for evaluating percentages (Supplementary Table S2). The standard error of the mean (SE)
147 of the gamma distribution was calculated as $SE = \sqrt{\frac{\alpha}{\beta^2 N}}$, where α represents the shape parameter, β
148 the rate parameter, and N the sample size. Subsequently, the 95% confidence interval (CI) of the
149 mean, indicating the uncertainty of estimates, was calculated using the z-distribution.

150

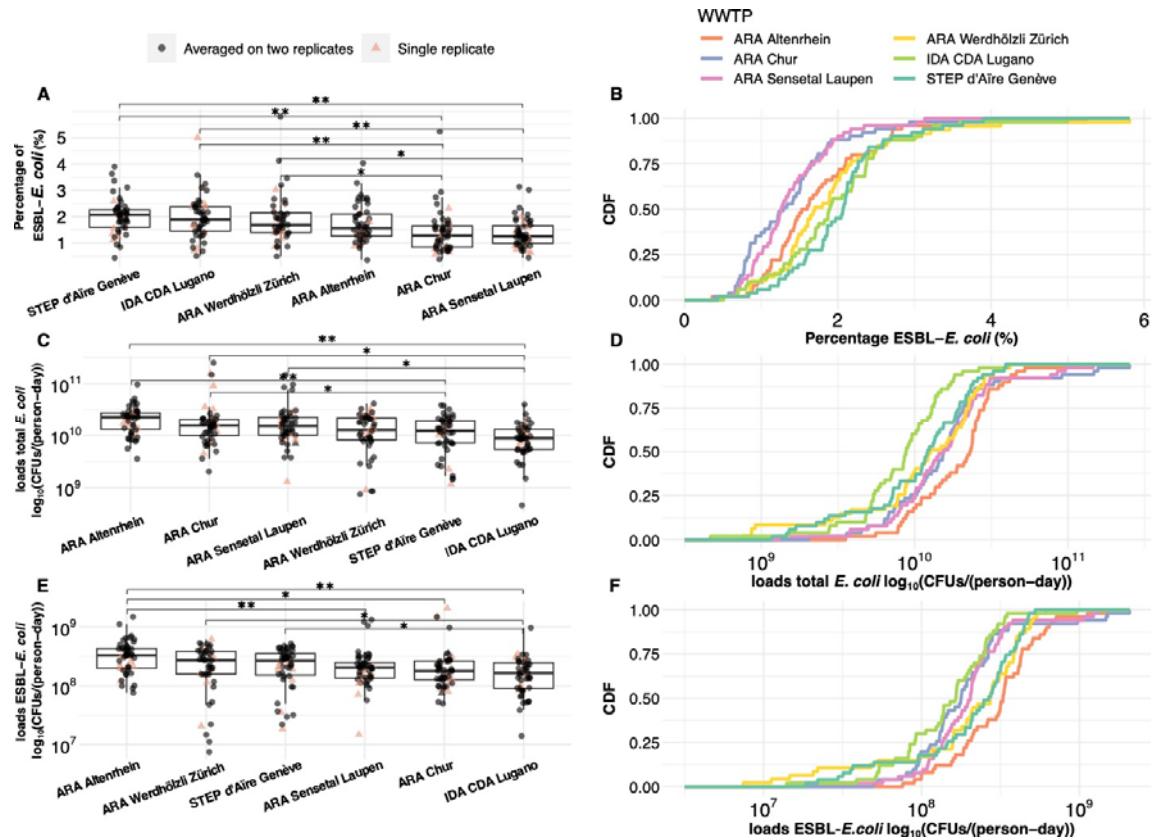
151 ESBL-*E. coli* percentage in wastewater is conceptually related to the prevalence of ESBL-*E. coli* carriers
152 within the domestic population contributing to the wastewater. Prevalence of ESBL-*E. coli* carriers is
153 estimated by the ESBL-*E. coli* percentage in wastewater, denoted as π_{WW} , divided by the average
154 proportion of ESBL-*E. coli* relative to the total *E. coli* shed only by carriers in the population, denoted
155 as $\bar{\pi}_C$ (Equation 1). In this study, $\bar{\pi}_C$ is not quantified, so the range of prevalence rates is modelled as
156 a function of $\bar{\pi}_{WW}$.

$$157 \quad \frac{N_C}{N_T} = \frac{\bar{\pi}_{WW}}{\bar{\pi}_C} \quad \text{Equation 1}$$

158 This model assumes constant $\bar{\pi}_C$, N_C , and N_T over the data collection period for estimating $\bar{\pi}_{WW}$. The
159 total population (N_T) includes only people colonized with *E. coli*, so is less than or equal to the total
160 catchment population, considering those who do not shed *E. coli*. The model neglects fate and
161 transport processes within the sewer system and during sample storage and transport. $\bar{\pi}_{WW}$ and $\bar{\pi}_C$
162 are estimated using the arithmetic mean. The model was applied for each WWTP, where $\bar{\pi}_{WW}$ and its
163 95% CI were predicted from the gamma distribution (refer to Section "Impact of monitoring
164 frequency on mean ESBL-*E. coli* percentage estimate") and for combined WWTPs, using a population-
165 weighted mean. The 95% CI was computed using the SE of the weighted mean, calculated using the
166 method proposed by Endlich et al. [22], and the z-distribution.

167 Results

168 Total *E. coli* were detectable in all samples with median load value of 1.4×10^{10} (IQR= 1.4×10^{10}).
169 Similarly, ESBL-*E. coli* were always detectable with median 2.1×10^8 (IQR= 1.9×10^8) CFUs/(person-day).
170 The ESBL-*E. coli* median percentage was 1.6% (IQR=0.89%), and the population-adjusted averaged
171 ESBL-*E. coli* percentage was 1.9% ($\pm 95\%$ CI 0.1%). More information on summary statistics can be
172 seen in Supplementary Table S3. ESBL-*E. coli* percentages significantly differed among WWTPs ($p <$
173 0.001), with the highest median percentage in Geneva (2.1% ;IQR=1.0%) and the lowest in Sensetal-
174 Laupen (1.3;IQR=0.7%) (Figure 2). No significant monthly variations in ESBL-*E. coli* percentages were
175 detected within any WWTPs (Supplementary Figure S1, Supplementary Tables S4, S5). Total *E. coli*
176 loads differed significantly among WWTPs ($p <$ 0.001), with the highest median loads in Altenrhein
177 (2.3×10^{10} CFUs/person-day;IQR= 1.4×10^{10}), and the lowest in Lugano (8.8×10^9 CFUs/person-
178 day;IQR= 4.6×10^9) (Figure 2). Monthly variations were observed in Zurich ($p <$ 0.001), Sensetal-
179 Laupen ($p <$ 0.05), Geneva ($p <$ 0.001), and Altenrhein ($p <$ 0.05). ESBL-*E. coli* loads varied
180 significantly among WWTPs ($p <$ 0.001), with the highest median loads in Altenrhein (3.3×10^8
181 CFUs/person-day;IQR= 2.3×10^8), and the lowest in Lugano (1.7×10^8 CFUs/person-day;IQR= 1.6×10^8),
182 mirroring the pattern observed for total *E. coli* loads (Figure 2). Monthly variations were observed
183 within Zurich ($p <$ 0.001), Sensetal-Laupen ($p <$ 0.001), and Geneva ($p <$ 0.001). Notably, STEP
184 d'Aire Genève had significantly higher ESBL-*E. coli* loads in November 2022 compared to November
185 2021 ($p <$ 0.05) and March 2022 ($p <$ 0.05).



186

187 **Figure 2: Comparative analysis of percentage and loads of extended-spectrum β -**
 188 **lactamase-producing *Escherichia coli* isolates among six wastewater treatment plants in**
 189 **Switzerland from November 2021 – November 2022**

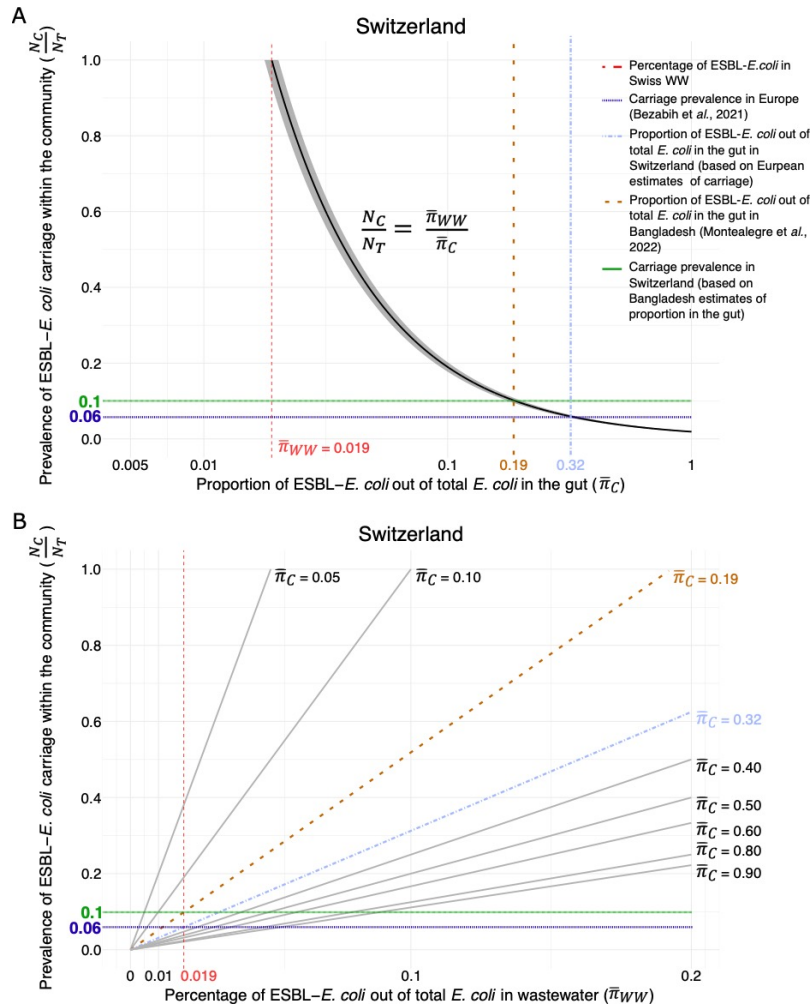
190 CDF: cumulative distribution function; CFUs: colony forming units; *E. coli*: *Escherichia coli*; ESBL: extended-
 191 spectrum β -lactamase; WWTP: wastewater treatment plant;

192 (A) the percentage of ESBL-*E. coli* over total *E. coli* by WWTP, (B) the CDF of the percentage of ESBL-*E. coli*
 193 over total *E. coli* in each WWTP. (C) the \log_{10} transformed loads of total *E. coli* by WWTP, and (D) the CDF of the \log_{10}
 194 transformed loads of total *E. coli* in each WWTP. (E) the \log_{10} transformed loads of ESBL-*E. coli* by WWTP, and
 195 (F) shows the CDF of the \log_{10} transformed ESBL-*E. coli* loads in each WWTP. In (A), (C) and (E) black circles
 196 represent the average of duplicate values, while salmon triangles represent a single value where duplicates were
 197 unavailable. * indicates a significant difference with $p < 0.02$ and ** with $p < 0.001$.

198

199 We established a mechanistic relationship between estimated ESBL-*E. coli* percentage in wastewater
 200 and the average percentage of ESBL-*E. coli* in carriers' guts (Figure 3). Considering the observed
 201 1.9% population-averaged ESBL-*E. coli* percentage in Swiss wastewater, our model indicates
 202 prevalence between 1.9% (assuming all shed *E. coli* is ESBL-*E. coli*) and 100% (assuming 1.9% of all
 203 shed *E. coli* is ESBL-*E. coli*) (Table 1). At the European average ESBL-*E. coli* prevalence of 6% [23],
 204 approximately 32% of *E. coli* shed by carriers in Switzerland are ESBL-*E. coli*. Notably, if we consider
 205 the average ESBL-*E. coli* proportion in the gut of children in Bangladesh (19.3%) [24], ESBL-*E. coli*
 206 carriage prevalence in Switzerland varies between 9.2% and 10.5%. Assuming the consistent ESBL-*E.*
 207 *coli* proportion in carriers, observed differences in ESBL-*E. coli* percentages among WWTPs imply
 208 varying carriage rates. Estimated carriage rates range from 7.1% (95% CI 6.3%, 7.9%) in Sensetal-
 209 Laupen to 10.5% (95% CI 9.5%, 11.4%) in Geneva (Supplementary Figures S2 and S3).

It is made available under a [CC-BY 4.0 International license](https://creativecommons.org/licenses/by/4.0/).



210

211 **Figure 3: Relationship between percentage of extended-spectrum β -lactamase-producing**
 212 ***Escherichia coli* isolates in wastewater, prevalence of carriage within the community and**
 213 **proportion in the gut in Switzerland**

214 *E. coli*; *Escherichia coli*; ESBL: extended-spectrum β -lactamase; N_C : prevalence of ESBL-*E. coli* carriers; N_T : total
 215 population size; $\bar{\pi}_{WW}$: mean percentage of ESBL-*E. coli* in wastewater; $\bar{\pi}_C$: mean proportion of ESBL-*E. coli*
 216 relative to total *E. coli* in the gut discharged by carriers into wastewater

217 (A) visualization of the relationship between percentage of ESBL-*E. coli* in wastewater ($\bar{\pi}_{WW}$), and prevalence of
 218 carriage within the community based on estimates of ESBL-*E. coli* out of total *E. coli* in the gut ($\bar{\pi}_C$, x-axis) equal
 219 to the percentage of ESBL-*E. coli* in wastewater. If the proportion of ESBL-*E. coli* in the gut ($\bar{\pi}_C$) equals the
 220 percentage of ESBL-*E. coli* in wastewater ($\bar{\pi}_{WW}$), then 100% of the community shedding *E. coli* carries ESBL-*E.*
 221 *coli* ($\frac{N_C}{N_T}$, y-axis). The grey-shaded area on the graph represents the 95% confidence interval of the population-
 222 weighted mean percentage of ESBL-*E. coli* in wastewater.

223 (B) describes the same relationship based on the percentage of ESBL-*E. coli* in wastewater ($\bar{\pi}_{WW}$) as a predictor
 224 (x-axis). Here, multiple values of $\bar{\pi}_C$ are assumed (straight lines), and the prevalence of ESBL-*E. coli* carriage
 225 within the community ($\frac{N_C}{N_T}$, y-axis) can be inferred based on the percentage of ESBL-*E. coli* in wastewater ($\bar{\pi}_{WW}$).

226 The dark-blue dotted line (6%) reflects an estimation by Bezabih et al. (2021) [23] for ESBL-*E. coli* carriage
 227 within Europe. Assuming this estimation holds for Switzerland, it corresponds to a 32% ESBL-*E. coli* proportion in
 228 the gut (light-blue dotted line). Alternatively, if the ESBL-*E. coli* proportion in the gut is approximately 19%
 229 (brown dotted line), as estimated in children from Bangladesh [31], then the carriage prevalence in Switzerland is
 230 approximately 10% (green line).
 231

232 **Table 1: Relationship between prevalence of ESBL-*E. coli* carriers and ESBL-*E. coli***
 233 **percentage in wastewater**

234 The table displays the estimated ESBL-*E. coli* carriage prevalence in the community as a function of the ESBL-*E.*
 235 *coli* proportion in the gut and the ESBL-*E. coli* percentage in wastewater. To describe the relationship within each
 236 wastewater treatment plant, the gamma arithmetic mean of the wastewater percentage was used. To describe
 237 the relationship across all WWTPs (Switzerland), the population-weighted mean was used.

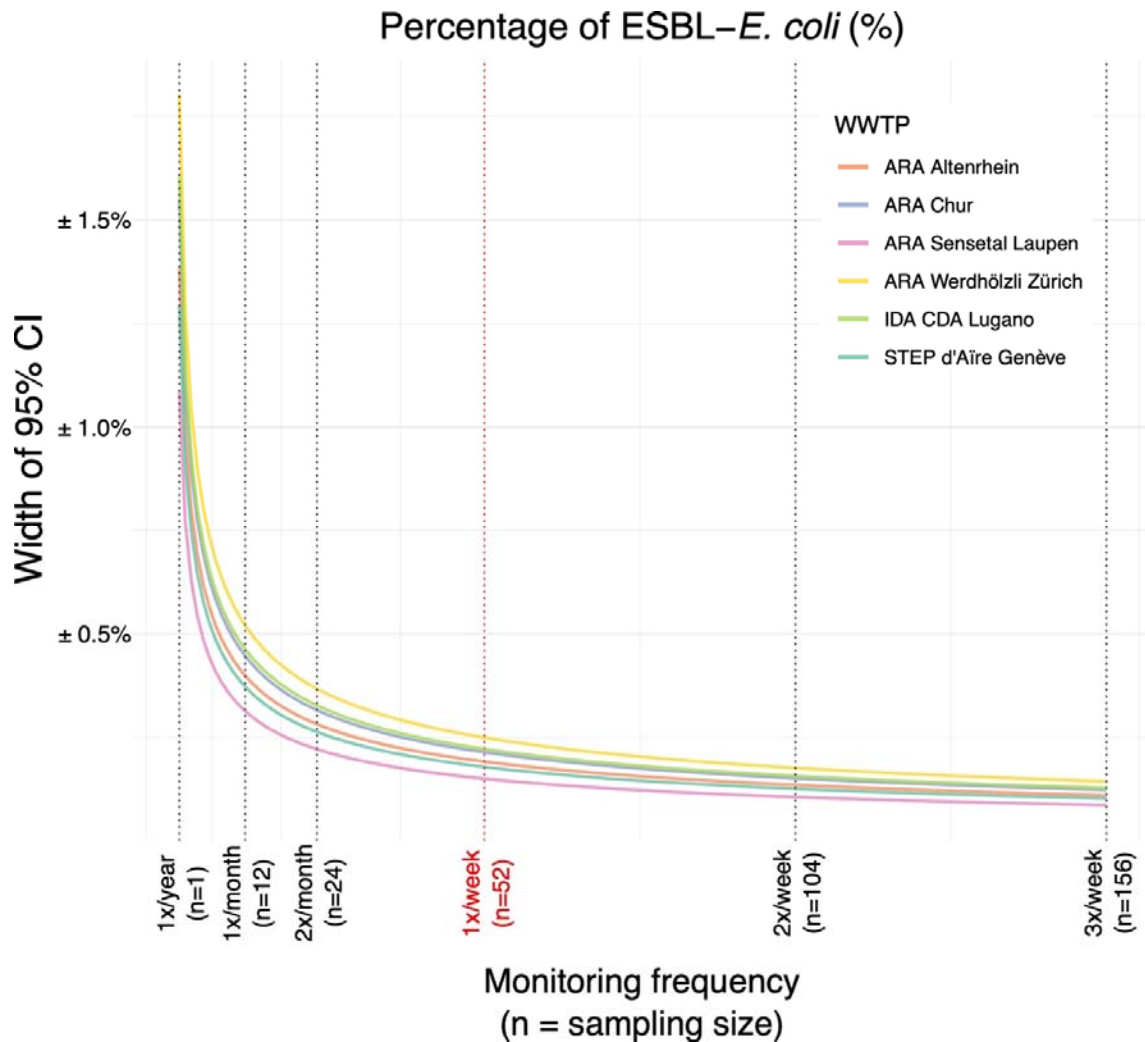
Average proportion of ESBL- <i>E. coli</i> out of total <i>E. coli</i> in the gut (%)	Prevalence of ESBL- <i>E. coli</i> carriage within the community (%) (95% CI of the mean)						
	Switzerland	ARA Werdhölzli Zürich	STEP d'Aire Genève	IDA CDA Lugano	ARA Altenrhein	ARA Sensetal Laupen	ARA Chur
1.9	100 (93.8 - 100)	100 (87.4 - 100)	100 (96.8 - 100)	100 (91.8 - 100)	90.7 (80.4 - 100)	72.3 (64.3 - 80.3)	73.5 (62.1 - 85)
10	18.9 (17.7 - 20.2)	19.1 (16.6 - 21.6)	20.2 (18.4 - 22)	19.7 (17.4 - 22)	17.2 (15.3 - 19.2)	13.7 (12.2 - 15.2)	14 (11.8 - 16.1)
19.3 ^a	9.9 (9.2 - 10.5)	9.9 (8.6 - 11.2)	10.5 (9.5 - 11.4)	10.2 (9 - 11.4)	8.9 (7.9 - 10)	7.1 (6.3 - 7.9)	7.3 (6.1 - 8.4)
30	6.3 (5.9 - 6.7)	6.4 (5.5 - 7.2)	6.7 (6.1 - 7.3)	6.6 (5.8 - 7.3)	5.7 (5.1 - 6.4)	4.6 (4.1 - 5.1)	4.7 (3.9 - 5.4)
40	4.8 (4.4 - 5.1)	4.8 (4.2 - 5.4)	5.1 (4.6 - 5.5)	4.9 (4.4 - 5.5)	4.3 (3.3 - 4.8)	3.4 (3.1 - 3.8)	3.5 (3 - 4)
50	3.8 (3.6 - 4.1)	3.8 (3.3 - 4.3)	4 (3.7 - 4.4)	3.9 (3.56 - 4.4)	3.4 (3.1 - 3.8)	2.8 (2.4 - 3.1)	2.8 (2.4 - 3.2)
60	3.2 (3 - 3.4)	3.2 (2.8 - 3.6)	3.4 (3.1 - 3.7)	3.3 (2.9 - 3.7)	2.9 (2.5 - 3.2)	2.3 (2.1 - 2.5)	2.3 (2 - 2.7)
70	2.7 (2.5 - 2.9)	2.7 (2.4 - 3.1)	2.9 (2.6 - 3.1)	2.8 (2.5 - 3.1)	2.5 (2.2 - 2.7)	2 (1.8 - 2.2)	2 (1.7 - 2.3)
80	2.4 (2.2 - 2.5)	2.4 (2.1 - 2.7)	2.5 (2.3 - 2.8)	2.5 (2.2 - 2.8)	2.2 (1.9 - 2.4)	1.7 (1.5 - 1.9)	1.8 (1.5 - 2)
90	2.1 (2 - 2.3)	2.1 (1.9 - 2.4)	2.2 (2 - 2.4)	2.2 (1.9 - 2.4)	1.9 (1.7 - 2.1)	1.5 (1.4 - 1.7)	1.6 (1.3 - 1.8)
100	1.9 (1.8 - 2)	1.9 (1.7 - 2.2)	2 (1.8 - 2.2)	2 (1.7 - 2.2)	1.7 (1.5 - 1.9)	1.4 (1.2 - 1.5)	1.4 (1.2 - 1.6)

238 ^aExpected average proportion of ESBL-*E. coli* out of total *E. coli* in the gut in Switzerland is 19.3%; estimate obtained from the
 239 mean proportion found in children in Bangladesh in a previous cohort [24].

240 The model of the relationships between prevalence and percentage of ESBL-*E. coli* in wastewater
 241 assumes fate and transport processes are negligible. Investigating the impacts of environmental
 242 variables of precipitation and temperature, which might influence fate and transport, showed weak
 243 correlations (Spearman's ρ ranging from -0.36 to 0.45) with ESBL-*E. coli* prevalence in wastewater. Air
 244 temperature showed positive correlations with ESBL-*E. coli* percentage in Chur ($\rho = 0.45$, $p < 0.01$)
 245 and Altenrhein ($\rho = 0.4$, $p < 0.05$), as well as with ESBL-*E. coli* loads in Altenrhein ($\rho = 0.41$, $p <$
 246 0.05) and Geneva ($\rho = 0.43$, $p < 0.05$). Precipitation did not significantly influence ESBL-*E. coli* or
 247 total *E. coli* loads (Supplementary Table S6, Figure S4).

248 One year of weekly ESBL-*E. coli* data allowed us to explore the impact of monitoring frequency on
 249 uncertainty in the estimated annual mean percentage of ESBL-*E. coli* (Figure 4). Our analysis, based

250 on the assumption of a consistent annual mean ESBL-*E. coli* percentage, demonstrates that sampling
251 once a week results in a 95% confidence interval width below $\pm 0.25\%$. Variations exist among
252 WWTPs, notably with Zurich, Lugano, and Chur displaying higher uncertainty in ESBL-*E. coli*
253 percentage compared to other WWTPs at a given sampling frequency.



254

255 **Figure 4: Effect of monitoring frequency on the confidence interval of extended-spectrum**
256 **β -lactamase-producing *Escherichia coli* percentage in wastewater**

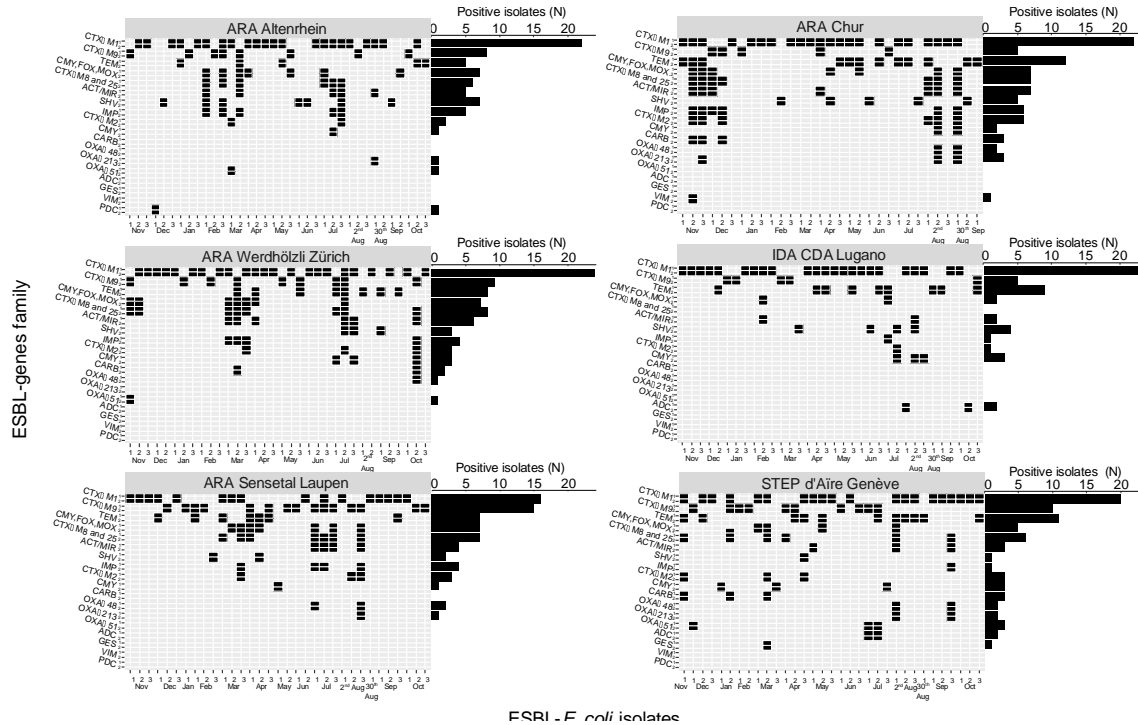
257 CI: confidence interval; *E. coli*: *Escherichia coli*; ESBL: extended-spectrum β -lactamase; WWTP: wastewater
258 treatment plant

259 The red vertical line highlights the sampling frequency adopted within our study (once a week).

260

261 The digital Multiplex Ligation Assay (Figure 5 and Supplementary Table S7) showed that out of 234
262 ESBL-*E. coli* isolates, 201 (86%) tested positive for at least one target gene family. The positivity rate
263 was consistent across WWTPs, ranging from 72% (n=31 out of 39) in Chur to 92% (n=36 out of 39)
264 in Altenrhein. The most prevalent ESBL-gene family was CTX-M1, identified in 126 isolates (54% of all
265 screened, 95% CI 48%, 59%), present in each WWTP in a minimum of 40% of isolates tested. CTX-
266 M9 and TEM were the second most common, with CTX-M9 detected in 22% (95% CI 14.6%, 29.9%)
267 and TEM also detected in 22% (95% CI 16.9%, 27.5%) of the total ESBL-*E. coli* isolates screened.
268 Less frequent gene families (GES, VIM, PDC) were found in only one isolate each in specific WWTPs
269 (0.4% prevalence, 95% CI 0%, 1.3%). All 18 targeted ESBL-gene families were detected at least
270 once, but there were no instances where all 18 ESBL-gene families were detected within in a single

271 WWTP (Figure 5). Geneva exhibited the highest number of unique gene families (16 out of 18), and
272 Lugano had the least with 10 gene families. Carbapenem resistance, induced by OXA-48, OXA-51, and
273 OXA-231, was infrequently detected in a small number of isolates from all WWTPs except Lugano. No
274 temporal trends in the distribution of ESBL-gene families among isolates were observed
275 (Supplementary Figure S7).



276

277 **Figure 5: Distribution of 18 extended-spectrum β -lactamase gene families among 201**
278 **ESBL-*E. coli* isolates isolated from wastewater, Switzerland, November 2021 – October**
279 **2022**

280 *E. coli*; *Escherichia coli*; ESBL: extended-spectrum β -lactamase; N: number of isolates positive to the gene family
281 Screening of 234 ESBL-*E. coli* isolates (x-axis) for 18 β -lactamase gene families (y-axis) using dMLA with a 36-
282 probe pair mixture (two for each family; named 1 and 2 on the y-axis). Black rectangles indicate presence of the
283 ESBL-gene family in the ESBL-*E. coli* isolate. ESBL-*E. coli* isolates are grouped by wastewater treatment plants
284 (WWTP) and arranged by sampling date (November 2021 to October 2022). Horizontal barplots on the side
285 indicate the number (N) of ESBL-Ec positive to each ESBL-gene family in the respective WWTP. Only strains
286 positive for at least one gene are shown on the heatmap; meaning that both probe-pairs of that gene family were
287 detected in the isolate. 33 strains were negative for all genes and are not represented.
288

289 Discussion

290 Our results reveal widespread dissemination of ESBL-*E. coli* in Swiss wastewater, with a median
291 concentration of 6.8×10^2 CFUs/ml and corresponding loads of 2.1×10^8 CFUs/(person-day). This aligns
292 with previous concentration estimates in Germany (7.6×10^2 CFUs/ml) [25] and the canton of Basel,
293 Switzerland (9.5×10^1 CFUs/ml) [13]. Across the six Swiss wastewater treatment plants (WWTPs), we
294 observed a median overall ESBL-*E. coli* percentage of 1.6% (IQR = 0.89), consistent with global rates
295 reported in Sweden (2.3%) [5] and Japan (2.2%) [26]. European data ranged from 1.6% in Greece to
296 4.4% in Germany, with other countries falling in between, including Denmark, Finland, Norway,
297 Belgium, Italy, and Spain [8].

298 Studies have demonstrated a correlation between ESBL-*E. coli* prevalence in wastewater and clinical
299 isolates from the same geographic area [5,6], and across geographical locations [8]. Our study
300 highlighted significant variations in ESBL-*E. coli* percentages on a spatial scale, indicating potential
301 differences in carriage rates at each location. The larger WWTPs investigated in terms of number of

302 inhabitants connected to the sewage, namely Zurich, Geneva, and Lugano, showed significantly higher
303 ESBL-*E. coli* percentages throughout the sampling period compared to the smallest WWTPs of Chur
304 and Sensetal-Laupen. Similarly, densely populated regions in Germany also showed increased ESBL-*E.*
305 *coli* percentage in wastewater [25], suggesting that higher population density facilitates ESBL-*E. coli*
306 transmission.

307 There are other potential causes for higher percentages of ESBL-*E. coli* than population density alone.
308 Zurich and Geneva are also home of to large international airports, associated with increased
309 international travel and food import, which are known risk factors for the spread of resistant bacterial
310 strains across borders [27,28]. Furthermore, the cities of Zurich and Geneva contain multiple
311 healthcare clinics and hospitals, known to have higher carriage rates compared to community settings
312 [24]. An alternative explanation is that people in larger catchments may have higher proportions of
313 ESBL-*E. coli* in their gut than people in smaller catchments.

314 Under the assumption that percentage of ESBL-*E. coli* out of total *E. coli* in the gut is – on average for
315 sufficiently large populations – conserved across Switzerland, wastewater-based estimates may be
316 proxies for carriage rates. Two data points are missing to validate this assumption for Switzerland: the
317 proportion of ESBL-*E. coli* out of total *E. coli* in Swiss carriers and the prevalence of ESBL-*E. coli*
318 carriage in the gut amongst people in Switzerland. When considering the population-averaged median
319 percentage across all WWTPs, and assuming an ESBL-*E. coli* carriage prevalence aligning with the
320 European estimate of 6% [23], the proportion of ESBL-*E. coli* out of total *E. coli* in the gut in the Swiss
321 population would be approximately 32%. Alternatively, using an average population-based ESBL-*E. coli*
322 prevalence in the gut of 19.3% reported in Bangladesh [24], the ESBL-*E. coli* carriage prevalence in
323 Switzerland ranges between 9.2% and 10.5%, surpassing the European estimate. This discrepancy
324 highlights uncertainty of these estimates in Switzerland. One additional explanation may be the rising
325 global rates of antimicrobial resistance [2]. Our results highlight the potential of wastewater as an
326 indicator of ESBL-*E. coli* carriage within the population, but cohort studies on prevalence rates and
327 shedding loads in Switzerland are necessary to clarify the connection between wastewater and
328 carriage. These studies would also help understanding whether regions with higher ESBL-*E. coli*
329 percentages in wastewater face an elevated risk of ESBL-*E. coli* infections compared to areas with
330 lower percentages. Such research would offer a comprehensive understanding of the relationship
331 between ESBL-*E. coli* presence in wastewater and its potential public health implications.

332 Observed temporal variations in ESBL-*E. coli* concentrations may be influenced by factors like
333 precipitation and water temperature, which impact runoff and bacterial persistence in sewer transport
334 [29]. We found some association between ESBL-*E. coli* percentage and loads and air temperature, but
335 no clear trend emerged. Previous studies showed similar limited climate influence on wastewater
336 measurements, indicating site-specific variability and sporadic positive correlations between outdoor
337 temperature and antibiotic-resistant bacteria concentration [30,31].

338 Surveillance of antimicrobial resistance (AMR) using wastewater will require frequent monitoring. The
339 monitoring frequency should represent an optimization of available resources and desired level of
340 estimate of precisions. Our analysis reveals that increasing the sampling frequency to at least once
341 per week results in a 95% CI of approximately $\pm 0.25\%$ for ESBL-*E. coli* percentage. Less frequent
342 sampling, such as monthly monitoring, leads to a 95% CI of about $\pm 0.5\%$. Sampling frequency is
343 therefore an optimization between budget and logistical constraints (necessitating fewer samples) and
344 acceptable uncertainty in the estimated percentage. Nevertheless, our study highlights that even with
345 reduced sampling, reasonably accurate estimates within a broader confidence interval can still be
346 obtained.

347 Detection of 18 β -lactamase-encoding genes (ESBL-genes) families in 86% of the 234 ESBL-*E. coli*
348 isolates tested demonstrates high diversity of ESBL-genes in Swiss wastewater. The remaining 14%
349 yielded negative results, potentially due to incomplete gene coverage by the dMLA method [19].
350 Similar findings occurred in a Polish study, suggesting the presence of other genes in the same

351 molecular class A [32]. Whole-genome sequencing techniques could offer deeper insights into the
352 observed resistance phenotype.

353 The most prevalent ESBL-gene family in our study was CTX-M-1, found in 54% of screened ESBL-*E.*
354 *coli* isolates, followed by CTX-M-9 and TEM, present in 22% of isolates. Similar patterns were
355 observed in European studies in France, Netherlands, and Poland (17,32,33). CTX-M-15, a subtype of
356 CTX-M-1, is widely dominant in Europe and commonly associated with the ST131 clone, known for
357 causing antimicrobial-resistant infections in humans globally [34]. This suggests the likely presence of
358 CTX-M enzymes in hospitals or households connected to the investigated wastewater treatment
359 plants.

360 We found low percentages (2.1% to 3%) of carbapenem-resistant genes, including OXA-48, OXA-51,
361 and OXA-231. Geneva exhibited all three OXA-like gene families, while Lugano had none, indicating
362 geographically constrained circulation. Despite low prevalence, the presence of OXA-like genes in
363 Switzerland raises concerns due to their increasing incidence in clinical settings [35]. VIM and PDC
364 were detected in only 0.4% of screened isolates, aligning with prior observations [36], emphasizing
365 the ability of wastewater monitoring to detect genes with low prevalence and raising questions about
366 their presence in Swiss clinics [37].

367 In our study, surveyed sites represented large urban areas, covering 14% of Switzerland's population.
368 Consequently, the obtained ESBL-*E. coli* data may not reflect the entire country, especially in rural or
369 differently populated regions. Additionally, the study detected ESBL-genes only in 86% of isolates,
370 with potential gaps due to protocol limitations. Whole genome sequencing could offer insights for the
371 remaining 14%. Species confirmation for ESBL-*E. coli* was not conducted, but the use of CHROMagar
372 with 99.3% specificity for *E. coli* mitigated biases. Lastly, fluctuations due to bacterial growth or decay
373 within the 48-hour sampling interval might have influenced the results.

374 In conclusion, the widespread prevalence of ESBL-*E. coli* provides a foundational benchmark useful for
375 informing future trends of AMR population-level carriage in Switzerland. It highlights the potential for
376 investigating the factors driving abundance shifts and their applicability in reducing carriage rates. The
377 estimated nationwide ESBL-*E. coli* carriage prevalence, ranging from 9.2% to 10.5%, surpasses the
378 European estimate, possibly due to escalating global antimicrobial resistance rates. Expanding our
379 research to include other pathogens and cohort studies examining carriage rates would enrich our
380 understanding of AMR dynamics and associated risks for healthcare systems and communities.
381 Furthermore, extending these approaches to communities with decentralized sanitations is needed to
382 gather global insights. Establishing robust connections between our findings and clinical contexts can
383 elucidate the direct impact of AMR gene prevalence on public health. Finally, regular monitoring of
384 antimicrobial resistant pathogens in wastewater across various communities enables the tracking of
385 population-level trends and changes in resistance, and could be used to inform impact of public health
386 interventions.

387 **Funding statement:**

388 The work was funded through the Swiss National Science Foundation grant (192763) to TRJ and
389 through the Swiss Federal Office of Public Health grant to Christoph Ort and TRJ.

390 **Data availability:**

391 All data or links to data as well as all scripts are available at our online repository at
392 <https://github.com/sheenaconforti/esblec-monitor-ww-21-22.git>. Data on precipitation and
393 temperature were obtained from the Federal Office of Meteorology and Climatology MeteoSwiss at
394 <https://gate.meteoswiss.ch/idaweb/system/stationList.do> (IDAWEB 1.3.5.0 © 2016 MeteoSwiss).

395

396 **Acknowledgements:**

397 Thanks to Lea Caduff, Charlie Gan, Laura Brülisauer for help processing wastewater samples, Manu
398 Tamminen for help analysing sequencing results, and Tamar Kohn and Christoph Ort for project
399 management and oversight. We extend our acknowledge to Tanja Stadler, her group, and the
400 members of Wastewater-based Surveillance for Infectious diseases and surveillance (WISE) group for
401 their invaluable and insightful inputs for the general discussion. We acknowledge the Natural Sciences
402 and Engineering Research Council of Canada (558161-2021) and the Fonds de Recherche du Québec
403 Nature et technologies (303866) for the postdoctoral fellowship funding of Émile Sylvestre. Finally,
404 thanks to the employees of the wastewater treatment plants IDA CDA Lugano (Ticino), ARA
405 Werdhölzli (Zurich), ARA Chur (Graubünden), ARA Sensetal Laupen (Bern), and STEP d'Aire Genève
406 (Geneva) for providing samples.

407 **Authors' contributions:**

408 The author contributions below are according to the CRediT statement. SC: Conceptualization,
409 Methodology, Formal analysis, Investigation, Data Curation, Visualization, Writing-Original Draft,
410 Writing - Review & Editing, Visualization. AH: Methodology, Investigation, Writing - Review & Editing.
411 ES: Methodology, Writing-Review & Editing. TRJ: Conceptualization, Methodology, Resources, Writing
412 – Review & Editing, Supervision, Project administration, Funding acquisition.

413 **References**

- 414 1. World Health Organization. 10 global health issues to track in 2021. 2020 [cited June 27,
415 2023]. Available from: <https://www.who.int/news-room/spotlight/10-global-health-issues-to-track-in-2021>.
- 416 2. Murray CJL, Ikuta KS, Sharara F, Swetschinski L, Robles Aguilar G, Gray A, Han C, Bisignano
417 C, Rao P, Wool E, et al. Global burden of bacterial antimicrobial resistance in 2019: a
418 systematic analysis. *The Lancet*. 2022;399(10325):629-655.
- 419 3. Larsson DGJ, Flach CF. Antibiotic resistance in the environment. *Nature Reviews Microbiology*.
420 2022;20(5):257-269.
- 421 4. Pitout JDD, Laupland KB. Extended-spectrum β -lactamase-producing Enterobacteriaceae: an
422 emerging public-health concern. *Lancet Infect Dis*. 2008;8(3):159-166.
- 423 5. Kwak YK, Colque P, Byfors S, Giske CG, Möllby R, Kühn I. Surveillance of antimicrobial
424 resistance among *Escherichia coli* in wastewater in Stockholm during 1 year: does it reflect
425 the resistance trends in the society? *Int J Antimicrob Agents*. 2015;45(1):25-32.
- 426 6. Hutinel M, Huijbers PM, Fick J, Åhrén C, Larsson DG, Flach CF. Population-level surveillance of
427 antibiotic resistance in *Escherichia coli* through sewage analysis. *Eurosurveillance*. 2019 Sep
428 12;24(37):1800497.
- 429 7. Hendriksen RS, Munk P, Njage P, Van Bunnik B, McNally L, Lukjancenko O, Röder T,
430 Nieuwenhuijse D, Pedersen SK, Kjeldgaard J, Kaas RS, et al. Global monitoring of
431 antimicrobial resistance based on metagenomics analyses of urban sewage. *Nat Commun*.
432 2019 Mar 8;10(1):1124.
- 433 8. Huijbers PM, Larsson DG, Flach CF. Surveillance of antibiotic resistant *Escherichia coli* in
434 human populations through urban wastewater in ten European countries. *Environ Pollut*.
435 2020;261:114200.
- 436 9. Aarestrup FM, Woolhouse ME. Using sewage for surveillance of antimicrobial resistance.
437 *Science*. 2020 Feb 7;367(6478):630-2.
- 438 10. Karkman A, Berglund F, Flach CF, Kristiansson E, Larsson DJ. Predicting clinical resistance
439 prevalence using sewage metagenomic data. *Commun Biol*. 2020;3(1):711.
- 440 11. Pruden A, Vikesland PJ, Davis BC, de Roda Husman AM. Seizing the moment: now is the time
441 for integrated global surveillance of antimicrobial resistance in wastewater environments. *Curr
442 Opin Microbiol*. 2021;64:91-99.
- 443 12. Blaak H, Kemper MA, de Man H, van Leuken JP, Schijven JF, van Passel MW, et al. Nationwide
444 surveillance reveals frequent detection of carbapenemase-producing Enterobacterales in
445 Dutch municipal wastewater. *Sci Total Environ*. 2021;776:145925.
- 446

- 447 13. Gómez-Sanz E, Bagutti C, Roth JA, Alt Hug M, García-Martín AB, Maurer Pekerman L, et al.
448 Spatiotemporal dissemination of ESBL-producing Enterobacterales in municipal sewer
449 systems: a prospective, longitudinal study in the city of Basel, Switzerland. *Front Microbiol.*
450 2023;14:1174336.
- 451 14. Pärnänen KM, Narciso-da-Rocha C, Kneis D, Berendonk TU, Cacace D, Do TT, Elpers C, Fatta-
452 Kassinos D, Henriques I, Jaeger T, Karkman A. Antibiotic resistance in European wastewater
453 treatment plants mirrors the pattern of clinical antibiotic resistance prevalence. *Sci Adv.* 2019
454 Mar 27;5(3):eaau9124.
- 455 15. Van Heijnsbergen E, Niebaum G, Lämmchen V, Borneman A, Hernández Leal L, Klasmeier J,
456 Schmitt H. (Antibiotic-Resistant) *E. coli* in the Dutch-German Vecht Catchment—Monitoring
457 and Modeling. *Environ Sci Technol.* 2022;56(21):15064-15073.
- 458 16. Lamba M, Ahammad SZ. Sewage treatment effluents in Delhi: A key contributor of B-lactam
459 resistant bacteria and genes to the environment. *Chemosphere.* 2017;188:249–256.
- 460 17. Bréchet C, Plantin J, Sauget M, Thouverez M, Talon D, Cholley P, Guyeux C, Hocquet D,
461 Bertrand X. Wastewater treatment plants release large amounts of extended-spectrum β -
462 lactamase-producing *Escherichia coli* into the environment. *Clin Infect Dis.* 2014;58(12):1658–
463 1665.
- 464 18. Puljko A, Milaković M, Križanović S, Kosić-Vukšić J, Babić I, Petrić I, Maravić A, Jelić M,
465 Udiković-Kolić N. Prevalence of enteric opportunistic pathogens and extended-spectrum
466 cephalosporin- and carbapenem-resistant coliforms and genes in wastewater from municipal
467 wastewater treatment plants in Croatia. *J Hazard Mater.* 2022;427.
- 468 19. Tamminen M, Spaak J, Caduff L, Schiff H, Lang R, Schmid S, Montealegre MC, Julian TR.
469 Digital multiplex ligation assay for highly multiplexed screening of β -lactamase-encoding
470 genes in bacterial isolates. *Commun Biol.* 2020;3(1):1–6.
- 471 20. Schmid S, Julian TR, Tamminen M. nsearch: an open source C library for processing and
472 similarity searching of next-generation sequencing data. *BioRxiv* 399782 [Preprint]. 2018.
473 Available from: <https://doi.org/10.1101/399782>.
- 474 21. Sylvestre É, Burnet JB, Smeets P, Medema G, Prévost M, Dorner S. Can routine monitoring of
475 *E. coli* fully account for peak event concentrations at drinking water intakes in agricultural and
476 urban rivers? *Water Res.* 2020 Mar 1;170:115369.
- 477 22. Endlich RM, Cynon BP, Ferek RJ, Valdes AD, Maxwell C. Statistical analysis of precipitation
478 chemistry measurements over the Eastern United States. Part 1: seasonal and regional
479 patterns of correlations. *J Appl Meteorol.* 1988;27:1322–1333.
- 480 23. Bezabih YM, Sabiiti W, Alameh E, Bezabih A, Peterson GM, Bezabhe WM, Roujeinikova A.
481 The global prevalence and trend of human intestinal carriage of ESBL-producing *Escherichia*
482 *coli* in the community. *J Antimicrob Chemother.* 2021;76(1):22–29.
- 483 24. Montealegre MC, Greenwood EE, Teichmann L, Nadimpalli ML, Caduff L, Swarthout JM,
484 Nydegger T, Sultana S, Islam MA, Lanza VF, Luby SP, Pickering AJ, Julian TR. Drinking Water
485 Chlorination Impact on Fecal Carriage of Extended-Spectrum Beta-Lactamase-Producing
486 Enterobacteriaceae in Bangladeshi Children in a Double-Blind, Cluster-Randomized Controlled
487 Trial. *Environ Health Perspect.* 2022;130(11).
- 488 25. Schmiege D, Zacharias N, Sib E, Falkenberg T, Moebus S, Evers M, Kistemann T. Prevalence
489 of multidrug-resistant and extended-spectrum beta-lactamase-producing *Escherichia coli* in
490 urban community wastewater. *Sci Total Environ.* 2021 Sep 1;785:147269.
- 491 26. Azuma T, Otomo K, Kunitou M, Shimizu M, Hosomaru K, Mikata S, Ishida M, Hisamatsu K,
492 Yunoki A, Mino Y, Hayashi T. Environmental fate of pharmaceutical compounds and
493 antimicrobial-resistant bacteria in hospital effluents, and contributions to pollutant loads in the
494 surface waters in Japan. *Sci Total Environ.* 2019 Mar 20;657:476-484.
- 495 27. Raffelsberger N, Buczek DJ, Svendsen K, Småbrekke L, Pöntinen AK, Löhr IH, Andreassen
496 LLE, Simonsen GS, Sundsfjord A, Gravningen K, Samuelsen Ø, Handal N, Hafne LJ, Lindemann
497 PC, Norgaard LM, Zaragkoulias K, Nilsen E, Larsen HE, Pino M, Kanestrøm A. Community
498 carriage of ESBL-producing *Escherichia coli* and *Klebsiella pneumoniae*: a cross-sectional study
499 of risk factors and comparative genomics of carriage and clinical isolates. *MSphere.* 2023.

- 500 28. Swiss Federal Office of Public Health [Internet]. Strategie Antibiotikaresistenz Bereich Mensch;
501 [cited 2023 Oct 6]. Available from: [https://www.bag.admin.ch/bag/de/home/strategie-und-](https://www.bag.admin.ch/bag/de/home/strategie-und-politik/nationale-gesundheitsstrategien/strategie-antibiotikaresistenzen-schweiz.html)
502 [politik/nationale-gesundheitsstrategien/strategie-antibiotikaresistenzen-schweiz.html](https://www.bag.admin.ch/bag/de/home/strategie-und-politik/nationale-gesundheitsstrategien/strategie-antibiotikaresistenzen-schweiz.html)
503 29. Oliver D, Page T. Effects of seasonal meteorological variables on E. coli persistence in
504 livestock faeces and implications for environmental and human health. *Sci Rep.* 2016;6:37101.
505 30. MacFadden DR, McGough SF, Fisman D, et al. Antibiotic resistance increases with local
506 temperature. *Nature Clim Change.* 2018;8:510–514.
507 31. Bock L, Aguilar-Bultet L, Egli A, Battegay M, Kronenberg A, Vogt R, Kaufmann C, Tschudin-
508 Sutter S. Air temperature and incidence of extended-spectrum beta-lactamase (ESBL)-
509 producing Enterobacteriaceae. *Environ Res.* 2022 Dec;215(Pt 2):114146.
510 32. Korzeniewska E, Harnisz M. Extended-spectrum beta-lactamase (ESBL)-positive
511 Enterobacteriaceae in municipal sewage and their emission to the environment. *J Environ*
512 *Manage.* 2013;128:904-911.
513 33. Blaak H, Lynch G, Italiaander R, Hamidjaja RA, Schets FM, de Roda Husman AM. Multidrug-
514 Resistant and Extended Spectrum Beta-Lactamase-Producing Escherichia coli in Dutch Surface
515 Water and Wastewater. *PLoS One.* 2015 Jun 1;10(6):e0127752.
516 34. Pitout JD, DeVinney R. Escherichia coli ST131: a multidrug-resistant clone primed for global
517 domination. *F1000Res.* 2017 Feb 28;6:F1000 Faculty Rev-195.
518 35. Findlay J, Perreten V, Poirel L, Nordmann P. Molecular analysis of OXA-48-producing
519 Escherichia coli in Switzerland from 2019 to 2020. *Eur J Clin Microbiol Infect Dis.* 2022
520 Nov;41(11):1355-1360.
521 36. Rodríguez-Molina D, Berglund F, Blaak H, Flach CF, Kemper M, Marutescu L, Gradisteanu GP,
522 Popa M, Spießberger B, Weinmann T, Wengenroth L, Chifiriuc MC, Larsson DGJ, Nowak D,
523 Radon K, de Roda Husman AM, Wieser A, Schmitt H. Carriage of ESBL-producing
524 Enterobacterales in wastewater treatment plant workers and surrounding residents - the
525 AWARE Study. *Eur J Clin Microbiol Infect Dis.* 2021 Dec 13:1–16.
526 37. Bleichenbacher S, Stevens MJA, Zurfluh K, Perreten V, Endimiani A, Stephan R, Nüesch-
527 Inderbilen M. Environmental dissemination of carbapenemase-producing Enterobacteriaceae
528 in rivers in Switzerland. *Environ Pollut.* 2020 Oct;265(Pt B):115081.
529
530