

Travel surveillance uncovers dengue virus dynamics and introductions in the Caribbean

Emma Taylor-Salmon^{1,2,*,#}, Verity Hill^{2,*}, Lauren M. Paul^{3,*}, Robert T. Koch^{2,*}, Mallery I. Breban², Chrispin Chaguza², Afeez Sodeinde², Joshua L. Warren^{4,5}, Sylvia Bunch⁶, Natalia Cano⁶, Marshall Cone⁶, Sarah Eysoldt⁶, Alezaundra Garcia⁶, Nicadia Gilles⁶, Andrew Hagy⁶, Lea Heberlein⁶, Rayah Jaber⁶, Elizabeth Kassens⁶, Pamela Colarusso⁷, Amanda Davis⁷, Samantha Baudin⁸, Edhelene Rico⁸, Álvaro Mejía-Echeverri⁸, Blake Scott⁹, Danielle Stanek⁹, Rebecca Zimler⁹, Jorge L. Muñoz-Jordán¹⁰, Gilberto A. Santiago¹⁰, Laura E. Adams¹⁰, Gabriela Paz-Bailey¹⁰, Melanie Spillane^{11,12}, Volha Katebi¹¹, Robert Paulino-Ramírez¹³, Sayira Mueses¹³, Armando Peguero¹³, Nelissa Sánchez¹³, Francesca F. Norman¹⁴, Juan-Carlos Galán¹⁵, Ralph Huits¹⁶, Davidson H. Hamer¹⁷, Chantal B.F. Vogels^{2,18,+}, Andrea Morrison^{9,+,#}, Scott F. Michael^{3,+,#}, Nathan D. Grubaugh^{2,5,18,19,+,#}

¹ Department of Pediatrics, Yale School of Medicine, New Haven, Connecticut, United States of America

² Department of Epidemiology of Microbial Diseases, Yale School of Public Health, New Haven, Connecticut, United States of America

³ Department of Biological Sciences, College of Arts and Sciences, Florida Gulf Coast University, Fort Myers, Florida, United States of America

⁴ Department of Biostatistics, Yale School of Public Health, New Haven, Connecticut, United States of America

⁵ Public Health Modeling Unit, Yale School of Public Health, New Haven, Connecticut, United States of America

⁶ Bureau of Public Health Laboratories, Division of Disease Control and Health Protection, Florida Department of Health, Tampa, Florida, United States of America

⁷ Bureau of Public Health Laboratories, Division of Disease Control and Health Protection, Florida Department of Health, Jacksonville, Florida, United States of America

⁸ Florida Department of Health in Miami-Dade County, Miami, Florida, United States of America

⁹ Bureau of Epidemiology, Division of Disease Control and Health Protection, Florida Department of Health, Tallahassee, Florida, United States of America

¹⁰ Division of Vector-Borne Diseases, Centers for Disease Control and Prevention, San Juan, Puerto Rico

¹¹ Office of Data, Analytics, and Technology, Division of Global Migration Health, Centers for Disease Control and Prevention, Atlanta, Georgia, United States of America

¹² Bureau for Global Health, United States Agency for International Development, Arlington, Virginia, United States of America

¹³ Instituto de Medicina Tropical & Salud Global, Universidad Iberoamericana, UNIBE Research Hub, Santo Domingo, Dominican Republic

¹⁴ National Referral Unit for Tropical Diseases, Infectious Diseases Department, CIBER de Enfermedades Infecciosas, IRYCIS, Hospital Ramón y Cajal, Universidad de Alcalá, Madrid, Spain

¹⁵ Microbiology Department, Hospital Ramón y Cajal, Instituto Ramón y Cajal de Investigación Sanitaria (IRYCIS), CIBER de Epidemiología y Salud Pública (CIBERESP), Madrid, Spain

¹⁶ Department of Infectious Tropical Diseases and Microbiology, IRCCS Sacro Cuore Don Calabria Hospital, Negrar, Verona, Italy

¹⁷ Department of Global Health, Boston University School of Public Health, Section of Infectious Diseases, Boston University School of Medicine, Center for Emerging Infectious Disease Policy and Research, Boston University, and National Emerging Infectious Disease Laboratory, Boston, Massachusetts, United States of America

¹⁸ Yale Institute for Global Health, Yale University, New Haven, Connecticut, United States of America

¹⁹ Department of Ecology and Evolutionary Biology, Yale University, New Haven, Connecticut, United States of America

* Co-first authors

+ Co-senior authors

Corresponding authors: emma.taylor-salmon@yale.edu, andrea.Morrison@flhealth.gov, smichael@fgcu.edu, nathan.grubaugh@yale.edu

Abstract

Dengue is the most prevalent mosquito-borne viral disease in humans, and cases are continuing to rise globally. In particular, islands in the Caribbean have experienced more frequent outbreaks, and all four dengue virus (DENV) serotypes have been reported in the region, leading to hyperendemicity and increased rates of severe disease. However, there is significant variability regarding virus surveillance and reporting between islands, making it difficult to obtain an accurate understanding of the epidemiological patterns in the Caribbean. To investigate this, we used travel surveillance and genomic epidemiology to reconstruct outbreak dynamics, DENV serotype turnover, and patterns of spread within the region from 2009-2022. We uncovered two recent DENV-3 introductions from Asia, one of which resulted in a large outbreak in Cuba, which was previously under-reported. We also show that while outbreaks can be synchronized between islands, they are often caused by different serotypes. Our study highlights the importance of surveillance of infected travelers to provide a snapshot of local introductions and transmission in areas with limited local surveillance and suggests that the recent DENV-3 introductions may pose a major public health threat in the region.

Introduction

Dengue is an acute febrile illness viral infection caused by dengue virus (DENV), which is transmitted to humans through the bite of an infected *Aedes* mosquito¹⁻³. There are four genetically- and antigenically-related DENV serotypes, and while infection with one serotype generally produces long-lasting homotypic immunity, it only induces short-lived heterotypic immunity, after which infection with another serotype may result in more severe disease^{1,2,4}. Almost half of the world's population lives in dengue-endemic areas, with children bearing the majority of the disease burden^{5,6}. Dengue has evolved from a sporadic disease into a major public health threat in the Americas, with reported case numbers reaching 20 million in the last 5 years in 46 countries⁷. The Caribbean

has often been a source of reintroduction and spread of all four DENV serotypes over the last thirty years ^{8,9}. Two other *Aedes*-borne viruses also emerged in this region: chikungunya virus in 2013 ^{10,11} and Zika virus in 2016 ^{12,13}. Local infectious disease surveillance and reporting is essential for public health efforts regarding outbreak response and disease mitigation; however, the control of outbreaks is challenging in low- and middle-income countries where resources are limited ¹⁴. In addition, dengue outbreaks can overwhelm health systems, further weakening surveillance capacity - particularly in countries that may not have strong laboratory infrastructure ¹⁵⁻¹⁷. Therefore, where we need disease surveillance the most - like the Caribbean - are often areas with limited publicly available data.

Infectious disease surveillance of travelers has been shown to supplement local surveillance in low-resource areas ¹⁸⁻²⁴. Infected travelers can also be sentinels for pathogen transmission in locations where outbreaks have not yet been reported ²⁵. For example, characterization of pathogens in infected travelers was used to reconstruct the global spread of H1N1 in 2009 ²⁶ and an unreported Zika outbreak in Cuba in 2017 ¹⁸. Utilizing traveler data could be particularly useful for supplementing surveillance in the Caribbean because of the popularity of tourism in the region ²⁷. In the United States, dengue is the leading cause of febrile illness among travelers returning from the Caribbean ^{23,25,28-30}. In Florida, the number of travel-associated dengue cases has increased dramatically in recent years ³¹. Therefore, we hypothesized that we could use surveillance of dengue-infected travelers diagnosed in Florida who recently returned from the Caribbean to better reconstruct DENV dynamics in the region.

In this study, we combined surveillance and sequencing of DENV from infected travelers to estimate local outbreak sizes, track serotypes, and map the patterns of lineage spread from 2009 to 2022. We determined that travel-associated infections closely mirrored local rates for countries and territories with robust local surveillance. An increase in infected travelers returning from Cuba in 2022 has previously been reported ³², leading to the assumption of a large dengue outbreak that was not reported to PAHO ⁷. We used surveillance data among travelers to estimate that the 2022 outbreak in Cuba was similar in size to other large outbreaks reported in the Americas. We used serotype data to decipher inter-island differences during outbreak years. By sequencing DENV isolates from travel associated cases, we uncovered two recent DENV-3 introductions from Asia into Jamaica and Cuba, the latter of which has now been detected in several other locations in the region ³³. Overall, our study highlights the importance of dengue surveillance among travelers and genomic epidemiology in supplementing local infectious disease surveillance in resource-limited locations by elucidating DENV transmission and spread within the Caribbean.

Results

Dengue travel cases to supplement local surveillance

Dengue incidence in the Americas rose significantly over the last four decades, reemerging as a major public health concern and culminating in ~17.5 million reported cases from 2010 to 2019 and ~20 million cases since 2019⁷. This coincided with a rapid increase in travel-associated dengue cases within the United States, especially in Florida. The Florida Department of Health (FDOH) has a robust dengue surveillance system, which captures symptomatic cases reported in patients who traveled to a dengue-endemic area within the two weeks prior to illness onset (**Table S1**). From 2009 to 2022, the FDOH reported between 19 (in 2017) to 929 (in 2022) travel-associated dengue cases per year, for a total of 2,300 cases, with the majority (1,815 cases, 78.9%) occurring in travelers who recently returned from the Caribbean (**Figure S1**). Overall, four countries and one US territory made up 75.6% (1737 cases) of all travel-associated dengue cases reported in Florida from 2009 to 2022: Cuba, Puerto Rico, Dominican Republic, Haiti, and Jamaica (**Figure 1**). There is significant variability in local dengue surveillance and reporting among Caribbean countries and territories, which can impact local outbreak responses and travel advisories^{34,35}. To address this variability, we hypothesized that dengue surveillance of infected travelers in Florida could be used to detect surveillance gaps within these five Caribbean islands.

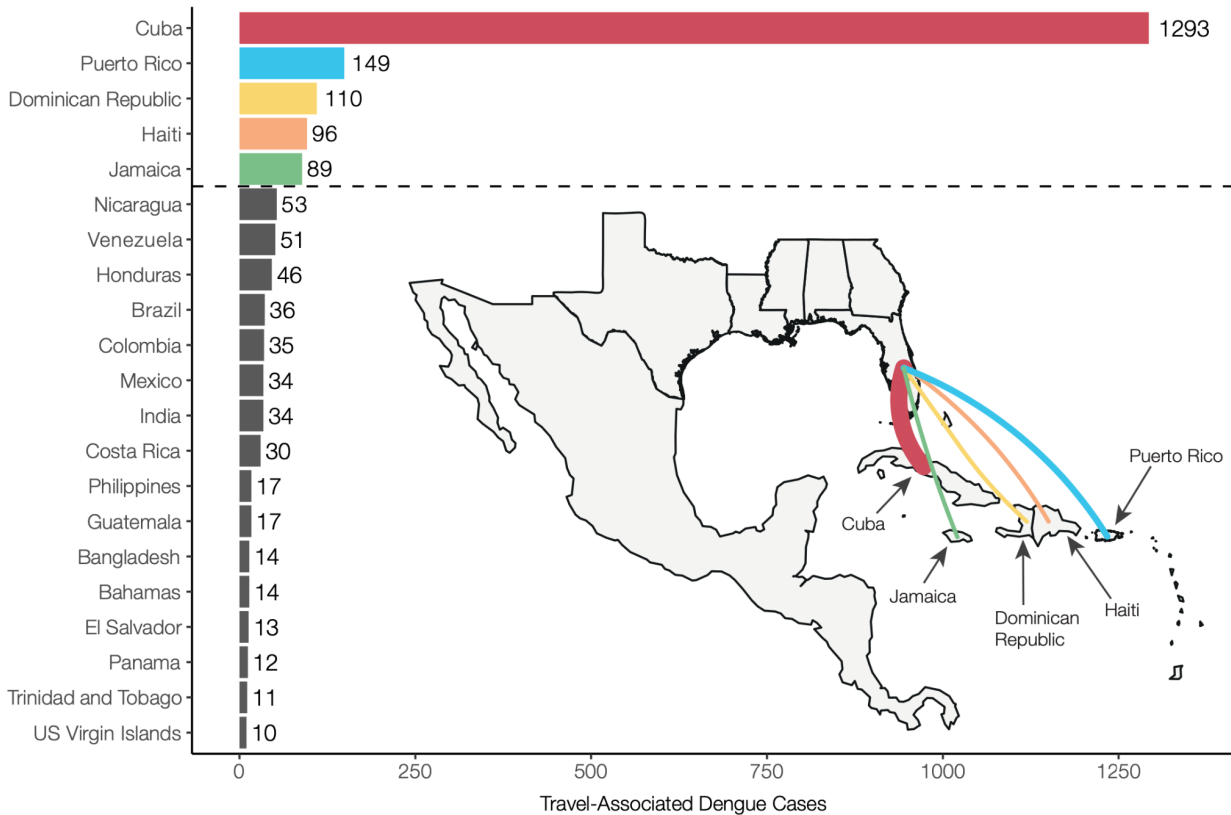


Figure 1. Cuba, Dominican Republic, Haiti, Jamaica, and Puerto Rico make up the majority of travel-associated dengue cases reported in Florida from 2009-2022.

Countries and territories are listed by total number of travel cases for each inferred origin of infection based on travel history, in descending order. Only countries or territories with at least 10 associated travel infections are shown. The complete data can be found in **Table S1**. The inset shows a map of the location of the top 5 associated country origins of travel cases reported in Florida, with the line width proportional to the number of travel cases.

To determine the extent to which travel-associated cases reported in Florida correlated with local reporting in the Caribbean, we compared local and travel-associated dengue case numbers from 2009 to 2022 (**Figure 2**). We obtained yearly suspected and confirmed dengue cases reported by Cuba, Dominican Republic, Haiti, Jamaica, and Puerto Rico from PAHO and all reports of travel-associated dengue cases from the FDOH. First, we compared the local and travel case trends for each country or territory. We found significant positive correlations from the Dominican Republic (Pearson $r = 0.764$, $p = 0.001$), Jamaica ($r = 0.960$, $p < 0.001$), and Puerto Rico ($r = 0.911$, $p < 0.001$), but the data from Cuba ($r = 0.496$, $p = 0.070$) and Haiti ($r = -0.694$, $p = 0.056$) were not correlated (**Figure 2A**). We then used flight data from the United States Department of Transportation (**Figure S2**) to estimate the ‘travel infection rates’ as the number of travel-associated cases per 100,000 air passenger journeys into Florida per year from each location^{18,36}. Comparing the travel infection rates to the local rates (dengue cases per 100,000 population), we again found positive correlations from the

Dominican Republic (Pearson $r = 0.750$, $p = 0.002$), Jamaica ($r = 0.912$, $p < 0.001$), and Puerto Rico ($r = 0.935$, $p < 0.001$), but not from Cuba ($r = 0.458$, $p = 0.1$) and Haiti ($r = -0.825$, $p = 0.012$; **Figure 2B**). The strong correlations between travel and local cases from the Dominican Republic, Jamaica, and Puerto Rico are similar to what we previously estimated for Zika¹⁸ and others estimated for dengue³⁶, reflecting the robust and consistent arbovirus surveillance systems at these locations. Notably, we found peaks of travel-associated infections from Cuba in 2022 that were not captured by the dengue case data reported by PAHO (**Figure 2A**). This increase in travel-associated cases was also seen in other parts of the world³². Our data also show disagreements between travel and local dengue cases in Haiti, specifically spikes in travel-associated cases in 2012 and 2018 and a spike in local cases in 2021 that were not reflected in the other data (**Figure 2A**). In fact, there are many years of missing dengue case data in the PAHO repository from Haiti, and these gaps are frequently paired with natural disasters (e.g. 2010 earthquake). Overall, we demonstrate here that dengue travel surveillance in Florida can help supplement local surveillance in the Caribbean region to infer relative local case dynamics.

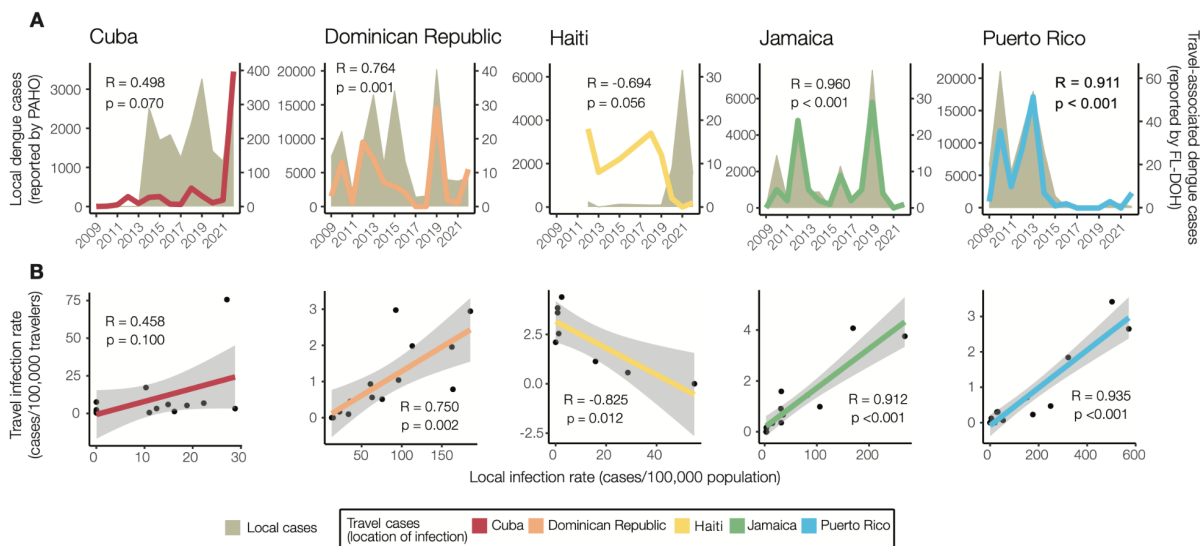


Figure 2. Travel surveillance from Florida correlates with local dengue infection rates in endemic countries and territories with robust local surveillance and case reporting.

(A) Yearly local dengue cases (left y-axis) reported by PAHO and yearly travel-associated dengue cases (right y-axis) reported by FDOH were sorted by the origin of exposure. (B) The local dengue infection rates for each country or territory were calculated by the number of locally reported cases per month per 100,000 population. The travel dengue infection rates for each country or territory of presumed exposure were calculated by the number of travel-associated cases per month per 100,000 air passenger journeys entering Florida from endemic locations. The datasets were compared using Pearson's correlation coefficient. The negative correlation between the local and travel infection rates may have been driven by a decreased travel volume to Florida from 2020-2020 (**Fig. S2**).

Estimating local dengue infection rates using travelers

Having demonstrated that the Dominican Republic, Jamaica, and Puerto Rico have significant positive correlations between local and travel-associated dengue infection rates (travel cases per 100,000 air passenger journeys; **Figure 2**), we then created a negative binomial regression model using these relationships to estimate local infection rates from Cuba and Haiti. We estimate that the 2022 dengue outbreak in Cuba is larger than any detected on the island since at least 2010 and similar in size to other large outbreaks found throughout the Americas (**Figure 3**).

In areas with inadequate local case reporting, previous studies suggested that sentinel surveillance of infected travelers can be used to estimate virus transmission dynamics and spread from endemic locations ^{18,26,36}. Only 3,036 laboratory-confirmed dengue cases were reported by Cuba in 2022, similar to what was reported in 2019 ⁷. This is inconsistent with the number of cases we detected from Cuba using travel surveillance (**Figure 1, 2A**). Moreover, dengue case data from Haiti were not reported to PAHO for 2009-2011, 2014, and 2016-2017 ⁷. To estimate the number of cases that likely went under-reported in Cuba and Haiti during our study period, we constructed a negative binomial regression model to predict local infection rates from the travel rates (**Figure 3A**). We found that when controlling for the gross domestic product (GDP; a relative approximation of resources available for surveillance), population, and year, the risk associated with local cases of dengue increases by 96% (95% confidence interval [CI]: 63%-134%) for every one unit increase in the log of travel infection rates from the Dominican Republic, Jamaica, and Puerto Rico. We also estimate that having a higher GDP is associated with a 111% more reported dengue cases (95% CI: 12%-314%), which supports that increased resources are associated with increased case-finding efforts.

When applying our model to travel data from Cuba and Haiti, we estimate new dengue case dynamics (**Figure 3B**) and compare the predicted infection rates to other observed rates throughout the Americas (**Figure 3C**). We estimate that the average yearly dengue infection rates from Haiti (244 [95% CI: 138-434]/100,000 population) are similar to the reported and estimated rates from the Dominican Republic (188 [95% CI: 111-320]/100,000), which is reasonable given that they are on the same island. We also estimate that from 2010-2021, the peaks in dengue infection rates from Cuba were similar in magnitude to other Caribbean islands (~500/100,000 population). However, we predict that Cuba likely experienced a large outbreak in 2022 (~1000 [95% CI: 306-4117]/100,000 population), potentially one of the largest in the region. Our reconstructed dengue infection rates using travel surveillance provide a clearer picture of dynamics in the Caribbean and allow us to investigate previously unreported trends.

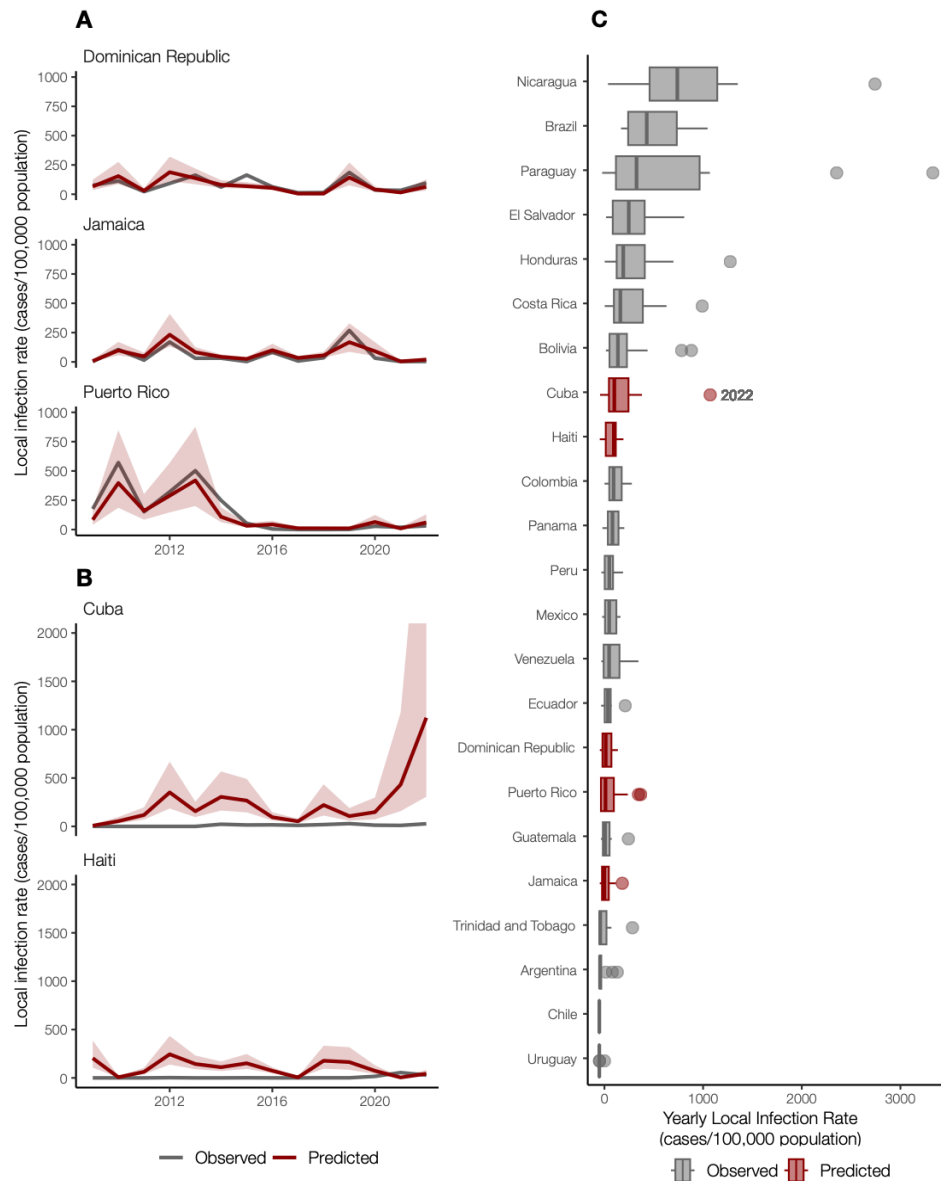


Figure 3. Travel infection rates provide an estimate of local dengue infections.

(A) Local and travel-associated dengue infection rates from the Dominican Republic, Jamaica, and Puerto Rico were used as predictors in a negative binomial regression model due to the strong correlations between local and travel-associated cases. The red lines indicate the predicted infection rates, and the shaded area indicates the 95% confidence interval, while the gray lines indicate the local dengue cases as reported to PAHO.

(B) Local dengue infection rates in Cuba and Haiti from 2009-2022 were predicted using the model from panel A. The colored lines indicate the predicted infection rates, and the shaded area indicates the 95% prediction interval, while the gray lines indicate the local dengue cases as reported to PAHO.

(C) Observed and predicted local infection rates for South American and Caribbean countries and territories with populations over one million inhabitants from 2009 to 2023. The dots are values outside of the 95% confidence interval, representing large outbreaks from any year. Locations in gray with observed cases were not included in our model.

Asynchrony of dengue virus serotypes across locations

Using travel-associated dengue cases, we reconstructed the infection trends in different locations of the Caribbean (**Figure 3**). To obtain a deeper resolution of the outbreaks, we determined the DENV serotype from infected individuals with recent travel to the Caribbean and estimated the annual proportions from each location from 2010 to 2022. We discovered that outbreaks on different islands were often caused by different serotypes, even during the same years (**Figure 4**).

While some countries report DENV serotype data associated with cases to PAHO, the data are released to the public as a binomial (present or absent) without accompanying proportions. Therefore, it is often difficult to determine (1) which serotypes are mostly responsible for outbreaks and (2) the temporal trends that may be useful for forecasting. To overcome this data limitation, we determined the serotype data for all travel-associated dengue cases from the FDOH from 2010 to 2022 (2009 serotype data were not available; **Figure 4; Table S1**). We analyzed the data as the total number of travel cases by serotype (**Figure 4A**) and the proportion of each serotype (**Figure 4B**) per year and country or territory. As a form of validation, our serotype proportions estimated from infected travelers returning from Puerto Rico generally match the proportions from local cases reported from Puerto Rico, including the dominance of DENV-1 from 2010 to 2013, the rise in DENV-4 from 2012 to 2014, the rise of DENV-2 from 2014 to 2015, and the re-emergence of DENV-1 in 2020³⁷. Overall, we found multiple serotypes for several years and locations, which has often been reported, but years with high travel infection rates were typically dominated by a single serotype (e.g. DENV-3 from Cuba in 2022 and DENV-1 from the Dominican Republic in 2019).

As is expected for DENV, we found that different serotypes transitioned in and out of dominance in each location during the twelve years (**Figure 4**). During the earlier years, however, we did detect some patterns. We found that from 2010 to 2016, DENV-1 and DENV-2 predominated in the Dominican Republic, Haiti, Jamaica, and Puerto Rico. Immediately following the 2015-2016 Zika epidemic, dengue cases decreased throughout the Americas³⁸. As dengue cases began to increase again to record highs in 2019 (>3 million cases reported to PAHO), we found that the outbreaks were mostly caused by different serotypes. The most prevalent serotypes in 2019 were DENV-1 from the Dominican Republic (96%, n=25) and Haiti (88%, n=8), DENV-2 from Cuba (90%, n=213), and DENV-3 from Jamaica (87%, n=23). By 2022, DENV-1 was the most commonly detected serotype in Puerto Rico (100%, n=6), DENV-2 arose in the Dominican Republic (90%, n=10), and DENV-3 became the new dominant serotype in Cuba (74%, n=735). The only location that consistently did not follow other Caribbean

serotype trends, even before the Zika epidemic, was Cuba. Overall, we demonstrate that dengue outbreaks in the Caribbean cannot be treated as a single entity, even when they are synchronized throughout the region (e.g. 2019), as transmission in different islands can be due to different DENV serotypes regardless of temporal relationships.

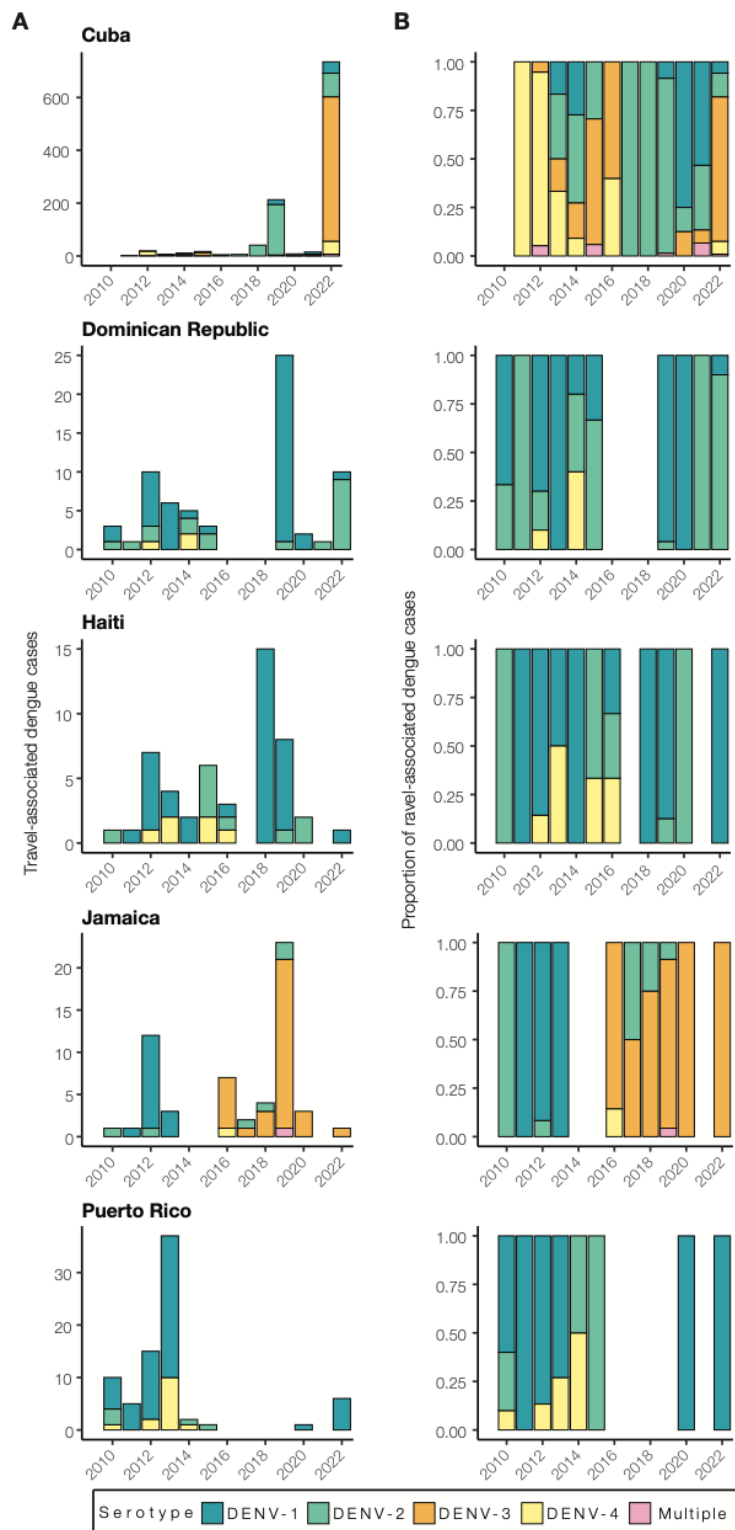


Figure 4. Dengue outbreaks in the Caribbean are due to different serotypes, even during the same year.

(A) Yearly travel-associated dengue cases by serotype were reported by FDOH and sorted by country or territory of likely exposure.

(B) The relative proportions of yearly travel-associated dengue cases by serotype per year and per country or territory of likely exposure, normalized to account for the number of infected travelers.

Sequencing travel infections reveals dengue virus diversity in the Caribbean

Our analyses show that dengue outbreaks in the Caribbean exhibit serotype variability between islands despite temporal synchrony (**Figure 4**). While serotype-level data can provide broad-scale information, there is substantial within-serotype diversity. Therefore, to uncover the DENV genetic diversity and patterns of spread within the Caribbean, we sequenced 295 traveler infections (**Figure 5**).

Using sequencing data that we generated from travel-associated dengue cases, we performed four discrete phylogeographic analyses, one for each serotype (**Figure 5**). The travel origin location in our analysis was designated as the site of presumed DENV exposure. We subdivided the Caribbean into Cuba, Dominican Republic, Haiti, Jamaica, Puerto Rico, and “other Caribbean”. For context, we used genomic data from North America, South America, and Central America, and representative DENV sequences sorted by WHO regions for the other areas of the world to highlight viral transmission into and within the Caribbean. Our data revealed the continued circulation of all four DENV serotypes and multiple clades within those serotypes in different parts of the Caribbean as recently as 2022. While most of the sequenced travel infections cluster within clades that have historically circulated within their respective regions, we also detected several introductions of all four serotypes into the Caribbean from southeast Asia, the western Pacific, and elsewhere from the Americas stretching back to the 1970s to as recently as 2021 (described in more detail in the next section; **Figure 6**).

To support our phylogenetic analyses, we performed three independent validations. One of our primary findings is the detection of a large DENV-3 (genotype III) clade from infected travelers returning from Cuba (**Figure 5, 6A**). First, we sequenced two samples from DENV-infected travelers returning from Cuba to Spain in 2022 and, second, we obtained sequencing data generated by the CDC Dengue Branch from travelers infected in Cuba in 2022, also provided by the FDOH. All of these sequences clustered in the same clade with the rest of the sequences from Cuba travelers. Third, we also sequenced samples from local dengue cases from the Dominican Republic collected in 2022 and found that these DENV-2 sequences clustered with DENV-2 sequences from Dominican Republic travel-associated dengue cases. These data suggest that our DENV genetic clustering patterns are not unique to our study population and sequencing methods, and likely represent local diversity.

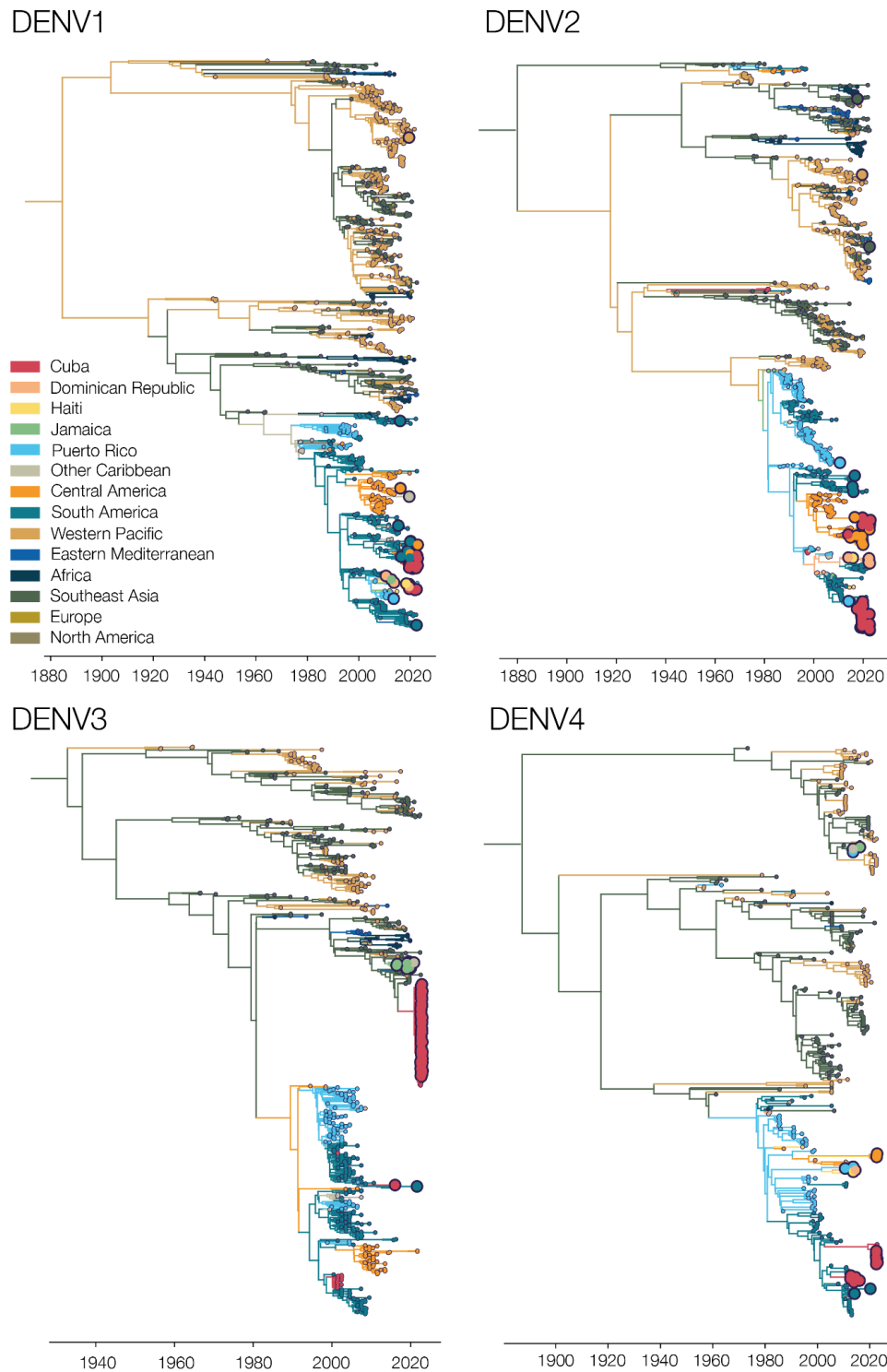


Figure 5. Sequencing travel-associated dengue cases reveals genomic diversity within the Caribbean.

Time-resolved phylogenies of each serotype, with the branches and tips colored by inferred and sampled locations respectively. Larger dots represent those DENV samples sequenced for this study.

Phylogenetic patterns of emergence, spread, and transmission

We showed that sequencing travel-associated dengue cases can reveal DENV genetic diversity within the Caribbean (**Figure 5**), which is an important context to support local genomic surveillance. We next used our genomic data to uncover patterns of DENV introductions, spread, and transmission in the region (**Figure 6**). Our intent here is not to explore every location-specific detail, but to showcase what is possible with even a relatively limited number of sequenced DENV genomes from travelers.

In our analysis, we detected a substantial number of travel-associated dengue cases coming from Cuba during 2022 (**Figure 2**), and we estimated that these stemmed from a large, under-reported local outbreak (**Figure 3**) predominantly caused by DENV-3, genotype III (**Figure 4, 5**). Our phylogeographic analysis further shows that the large cluster of DENV-3 sequences from Cuba in 2022 was from an introduction from southeast Asia that likely occurred in late 2020 (95% HPD = 2020-04-06 to 2021-05-13); **Figure 6A**). Using data from the FDOH and the CDC Dengue Branch, we found that this lineage has already spread to Puerto Rico, Florida, and Arizona by 2022, and others recently detected it in Brazil³³. Thus, this may be a rapidly spreading lineage of concern for the Americas.

We discovered that the 2022 Cuba outbreak clade was not the first recent reintroduction of DENV-3, genotype III, into the Caribbean from southeast Asia. Sequencing travel-associated infections also revealed an earlier but distinct introduction of this genotype into Jamaica in 2014 (95% HPD = 2013-02-02 to 2015-09-04; **Figure 6A**). We first detected this lineage from three travelers returning from Jamaica in 2016 and then again from 7 travelers during the re-emergence of DENV-3 in Jamaica in 2019 (**Figure 4**). We last sequenced this lineage from a traveler from St. Lucia in late 2020, indicating that the virus had limited spread, but likely not as extensively as the Cuba lineage.

Having detected new DENV-3 introductions into the Caribbean, followed by within-Caribbean spread (**Figure 6A**), we next sought to investigate the patterns of spread for all four serotypes in the region. By estimating the country or territory of origin (“source”) and destination (“sink”) from each spread event (“transition”) from our phylogeographic analysis (i.e. not based on traveler data, rather phylogenetic estimates; **Figure 5**), we can count how often each location is involved in virus transitions for each serotype (**Figure 6B**). Within the Caribbean and across all serotypes, we found that Puerto Rico was the source of most DENV transitions within the Caribbean - 40 in total, compared to the second most common source of Jamaica, which had 18. Countries or territories with sequences in the Caribbean that are not explicitly in our dataset (i.e. other than Cuba, Puerto Rico, Dominican Republic, Haiti, and Jamaica) were the most common sink, with 27 transitions ending there. Cuba was the second most common

sink, with 20 DENV transitions ending there. Much of these phylogeographic patterns are due to DENV-2, in which we found 17 exports from Puerto Rico and 16 exports from Jamaica (e.g. **Figure S3**). Finally, the most common transmission pair was Cuba and Puerto Rico. While some of these patterns may be influenced by sampling biases (i.e. more transitions involving locations with more sequences), our results suggest that Puerto Rico, Cuba, and Jamaica are potential hubs for DENV spread in the region.

In addition to between-location dynamics, we also explored within-location lineage dynamics. In particular, we detected instances of multiple lineages from the same serotype co-circulating in the same country. For example, we detected two co-circulating lineages of DENV-2 (genotype III) in Cuba, designated here as clades A and B (**Figure 6C**). We estimate that they were introduced into Cuba in early 2016 (likely from Central America or Mexico) and late 2017 (likely from Puerto Rico), respectively, and both continued to circulate through the 2019 and 2022 outbreaks. Their relative frequencies changed between 2019 and 2022, with clade B dominating in 2019 but clade A increasing to become more even in frequency in 2022. We also found evidence of co-circulating DENV-1 clades in Cuba (**Figure 5**). While neither of these clades has any concerning mutational signals, evaluating the transmissibility of co-circulating lineages is the basis of discovering meaningful phenotypes that may impact the effectiveness of interventions.

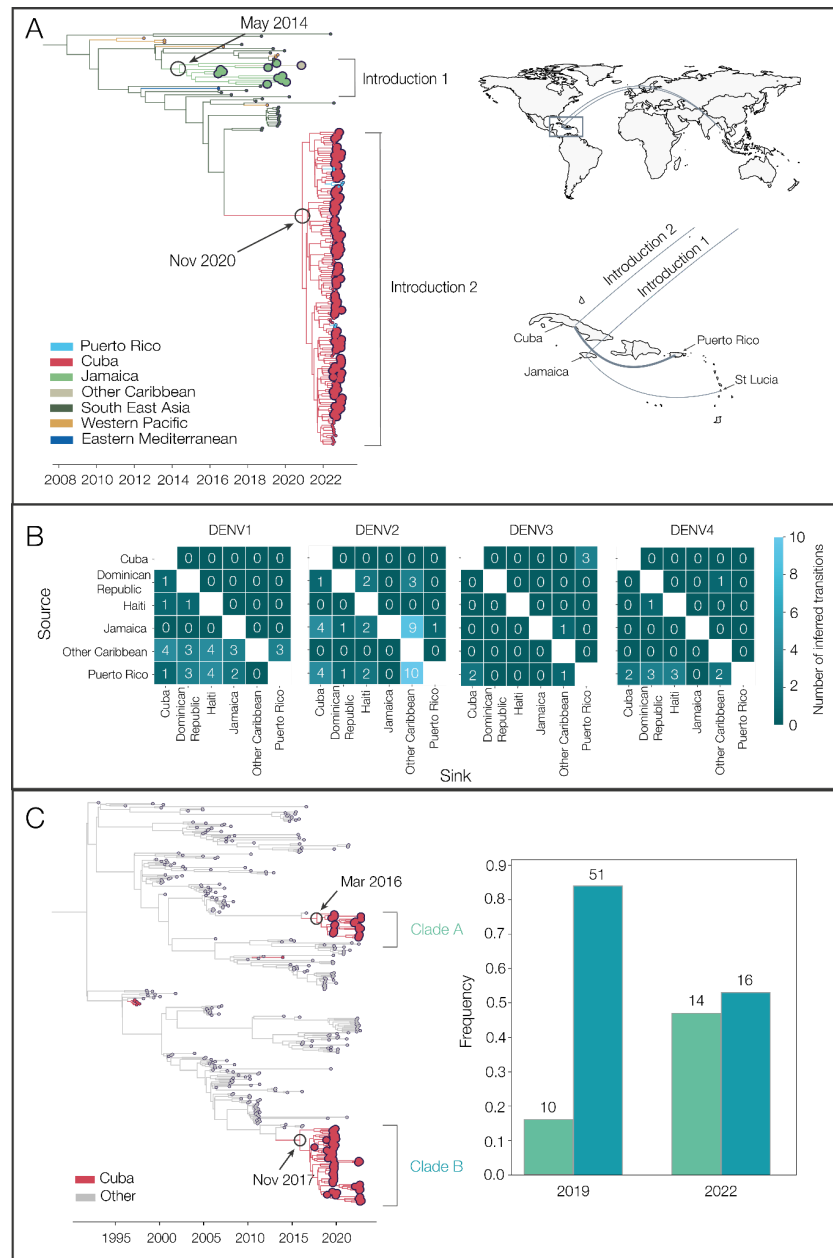


Figure 6. Phylogenetic patterns of dengue virus emergence, spread, and transmission in the Caribbean.

(A) Time-resolved phylogeny showing global spread of DENV-3 genotype III. The times of the most common ancestor of the clades are taken conservatively as introduction times and are indicated by circles. The map shows the transitions from Southeast Asia to Cuba and Jamaica and within the Caribbean. Countries or territories involved are indicated on the map, and virus transitions are indicated by lines going counter-clockwise, with thickness indicating a number of movements.

(B) Heatmaps of the number of inferred virus transitions going from lower numbers in dark blue to higher numbers in light blue. Sources/origins are on the y-axis, and sinks/destinations are on the x-axis, with one heatmap per serotype.

(C) Time-resolved phylogeny shows two co-circulating DENV-2 (genotype III) clades in Cuba, which are colored in red. The bar chart shows the frequencies of each clade in 2019 and 2022.

Discussion

Travel surveillance and genomic epidemiology uncover dengue virus dynamics

Using patterns of infected travelers and virus genomics, we discovered previously unrecognized DENV dynamics within the Caribbean. Dengue is a major public health concern within the Caribbean, and the past two decades have seen significant increases in morbidity and mortality in the region ^{5,34,39}. With dengue outbreaks increasing in frequency and severity ³⁹, accurate and detailed surveillance data are crucial for epidemiological investigations. Currently, the main source of information about dengue outbreaks in the Caribbean comes from PAHO and other public health organizations, which rely on accurate case reporting from national or territorial health agencies. However, previous studies have shown large differences between case reporting to PAHO and estimated cases ³⁴.

Dengue surveillance among travelers can be an effective method to supplement local surveillance, especially in resource-limited settings ^{18–20,32}. There is a large volume of travel between Florida and the Caribbean (**Figure S2**), and Florida has experienced a steady increase in imported dengue cases over the last two decades, especially from the Caribbean (**Figure 1**) ⁴⁰. In this study, we investigated whether travelers with dengue returning to Florida could be used as a surrogate for local transmission in the Caribbean and found significant positive correlations between local and travel infection rates for the Dominican Republic, Jamaica, and Puerto Rico (**Figure 2B**). For locations with local surveillance gaps, we built a model to estimate local infection rates in these areas, assuming the similarity between local and travel data (**Figure 3**). From this analysis, we uncovered a large dengue outbreak in Cuba in 2022 (**Figure 3B**) and estimated that it was similar in size to other large outbreaks detected elsewhere in the Americas (**Figure 3C**). To investigate the factors responsible for these outbreaks, we analyzed serotype data from infected travelers returning to Florida and showed that these outbreaks are not synchronized across islands, with different serotypes responsible for outbreaks on different islands within the same year (**Figure 4**). We then used viral genomics to provide a snapshot of genetic diversity within the region (**Figure 5**) and uncover DENV spread and introductions (**Figure 6**). Overall, we demonstrate that using information about dengue in travelers, including the use of sequencing, should become more routinely used to enhance dengue surveillance.

New DENV-3 introductions from Asia led to a large outbreak in Cuba

There have been several reintroductions of all four DENV serotypes into the Americas since its reemergence during the 1960-80s. Here, we detected two recent DENV-3

(genotype III) introductions into Cuba and Jamaica. We estimate that the introduction from southeast Asia into Cuba occurred in late 2020 (**Figure 6A**) and, in the course of only two years, caused a large outbreak (**Figure 3B**) and spread to several other locations in the Americas³³. Given the speed of these events, it is likely that this DENV-3 lineage has a significant transmission advantage over at least some DENV lineages in the Americas.

This is not the first time that DENV-3 re-emerged in the Americas leading to widespread outbreaks. Historically, DENV-3 was re-introduced in the Americas in the 1970s, but then was not detected for 16 years between 1978 and 1994, when it was almost simultaneously isolated from Nicaragua and Panama⁴¹⁻⁴³. It subsequently spread throughout Central America and the Caribbean, leading to widespread epidemics of dengue hemorrhagic fever^{41,43-45}. The sudden DENV-3 re-emergence stemming from that introduction could be attributed to the loss of immunity during the 16-year hiatus, which could be similarly true for the recent DENV-3 introduction into Cuba. Outside of the two new DENV-3 introductions we detected and tracked with travelers, there was very little detection of DENV-3 in the Caribbean (**Figure 3**) and elsewhere in the Americas over the past 10 years^{33,46,47}. While we do not yet know the true epidemiological impact of this newly introduced lineage, this will be important to closely monitor through local and travel surveillance.

Interestingly, the DENV-3 introduction into Jamaica has not spread to the same extent as the introduction into Cuba, despite its introduction almost 6 years earlier (**Figure 6A**). It could indicate that there are notable transmissibility differences between the two lineages or that the Jamaican lineage did not become established within a population with sufficient susceptibility or mobility to facilitate its spread. While these deterministic and stochastic processes require further investigation, even knowing that this introduction occurred was only possible through our surveillance among travelers - this clade was entirely sequenced from travelers (**Figure 6A**).

Genetic diversity within the region

By sequencing DENV genomes from infected Caribbean travelers, we demonstrated widespread diversity of circulating viral lineages, both between and within serotypes (**Figure 4, 5**). Even in outbreak years, such as 2019 or 2022, there was no one lineage that became dominant in the region; instead, different serotypes were often responsible for outbreaks on different islands, even if they occurred at the same time (**Figure 4**). This indicates synchronized outbreaks are more likely driven by population and environmental effects than virus-related factors.

Most dengue-endemic areas in the Americas have co-circulation of multiple serotypes, which increases the likelihood of concurrent infections^{48–50}. In fact, the first-ever confirmed case of concurrent DENV infection was reported in Puerto Rico during the 1982 outbreak in a patient infected with DENV-1 and -4 serotypes^{49,51}. However, we noted minimal numbers of mixed infections when reviewing serotype data (14 out of 1328, **Figure 4**), which is significantly lower than those previously reported⁴⁸. Given the size of our dataset, it is possible that the overall likelihood of concurrent infections, even in hyperendemic locations, is actually quite small, as is their overall impact on severe dengue cases and epidemics.

Limitations

Travel surveillance data is limited by location-specific patterns and volumes of travel^{19,25}. During our study period, there were years in which we detected minimal or no infected travelers despite local dengue cases being reported to PAHO (**Figure 2A**). This introduced biases in our local case estimates (**Figure 3**) and in our patterns of DENV emergence and spread throughout the region (**Figure 6**), as we have no travel data from that time period.

For this study, we assumed that the risk of DENV infection was similar for travelers and local inhabitants in endemic countries and territories, meaning that a rise in local cases would correspond to a relative increase in travel-associated infections. However, this may not be the case and would depend on the travelers' previous exposure to dengue and related flavivirus infections or vaccinations, as well as on the general patterns of travelers' behaviors while visiting the country or territories (e.g. DENV infections are more common among individuals visiting their friends and relatives than people traveling for other reasons). Endemic locations also experience heterogeneity with regard to dengue risk, as the primary vector for dengue in the Caribbean is *Aedes aegypti*, which is found more commonly in urban areas. It is also possible that some residents in endemic locations would be less likely to seek medical care and thus be diagnosed with only mild dengue symptoms, as the illness is a common occurrence for them. Thus, using travelers as sentinels alone cannot provide a complete picture of local dengue outbreaks.

Calculating travel infection rates from Cuba has important limitations we tried to address during our analysis. First, due to the associations between local dengue outbreaks in Florida and infected travelers from Cuba, the FDOH enhanced its case finding among individuals reporting recent travel from this location. The enhanced case finding was particularly apparent in 2019 and 2022, when the FDOH reported 413 and 929 travel-associated dengue cases from Cuba, respectively. We attempted to correct this by using numbers in our calculations by only using cases that would have been

detected in those years using the standard practice (i.e. not using “travel to Cuba” as the reason for DENV testing since that is not common practice for travel from other locations). In addition, there was also difficulty with ascertaining an accurate number of travelers from Cuba to Florida, as not all travel between these two areas is documented, including boat travel. We do not expect this to significantly impact our travel volume estimates as we previously thoroughly investigated travel patterns from Cuba to Florida¹⁸, and undocumented boat travel is estimated to be only about 1.18% (6,182/524,611 in 2022) of the travel volumes (air passenger journeys) that we obtained from the US Department of Transportation⁵². The COVID-19 pandemic also impacted travel throughout the region (**Figure S2**) and could have impacted how people interacted with the medical system (e.g. avoiding hospitals, fevers presumed secondary to SARS-CoV-2). This makes it difficult to interpret data from 2020, 2021, and, to some extent, 2022, although for that last year, travel restrictions were mostly lifted, and we detected increased travel within the region (**Figure S2**). Thus, the potential inaccuracies in our travel infection rates from Cuba mean that our modeled local estimates should be viewed as relative rates rather than as absolute values. The compilation of our analysis still indicates that there was a large under-reported dengue outbreak in Cuba in 2022, a finding that was independently discovered from travelers returning from Cuba to other locations³².

Conclusions

Utilizing infected travelers as a means of detecting local outbreaks should not replace local dengue surveillance; however, it can be helpful for locations where local surveillance is not feasible or is underfunded. By supplementing local data, travel surveillance can assist with detecting local outbreaks and estimating their size. When combined with genomic epidemiology, we used travel surveillance to provide a snapshot of the diversity of DENV within the Caribbean, as well as reveal patterns of DENV emergence and lineage spread. While we did not address it in this study, travel surveillance can also provide important epidemiological information at the destination (Florida, in this case) and could be incorporated into forecasting models. If this framework was incorporated into a routine system, utilizing networks such as GeoSentinel, over time, it would help support global surveillance efforts to combat the surge of dengue.

Methods

Ethics

The Institutional Review Boards (IRB) from the FDOH, Universidad Iberoamericana (UNIBE), Florida Gulf Coast University, and the Yale University Human Research Protection Program determined that pathogen genomic sequencing of de-identified remnant diagnostic samples as conducted in this study is not research involving human subjects (Yale IRB Protocol ID: 2000033281; UNIBE-CEI# 2021-88).

Travel-associated cases, serotypes, and infection rates

Weekly cumulative reports on travel-associated dengue case numbers were collected from 2009 to 2022 and are publicly available from the FDOH ⁵³. These cases reported on the FDOH database include those that were confirmed by both PCR and serologic assays. Serotype data for travel-associated dengue cases was determined by the FDOH using the CDC DENV-1–4 RT-PCR Assay ⁵⁴. Travel-associated cases occurred in individuals who had traveled to a dengue-endemic country or territory in the two weeks prior to symptom onset. For this study, we only included patients who traveled to one endemic location within the 2 weeks prior to symptoms onset so we could more accurately sort the temporal and spatial distribution of travel-associated cases. We aggregated the data by year and by location of likely exposure (i.e., travel origin).

Dengue is a reportable disease in the United States. In addition to health care provider and laboratory reporting, the FDOH uses syndromic surveillance to aid in case identification. FDOH detected syndromic surveillance cases by searching de-identified chief complaints, admission and discharge diagnoses, travel-related fields, etc., obtained from participating emergency rooms and urgent care centers in Florida. Information from suspected dengue cases are forwarded to the county health departments, who in turn reach out to the local hospitals and ascertain whether dengue testing was ordered. Enhanced surveillance was increased during 2019 and 2022 due to the large number of travel-associated cases being detected. These efforts involved adding recent travel to Cuba as a criterion, in addition to dengue-like symptoms. Only 18 of the 413 travel-associated cases in 2019 and 397 of the 929 cases in 2022 were first identified via syndromic surveillance and used in our analysis. Of note, 116 cases identified via enhanced surveillance in 2022 would not have met case criteria without this additional intervention. Therefore, in order to counter these differences in case ascertainment, we only included cases captured via traditional reporting, not enhanced detection of cases among travelers returning from Cuba, for our calculations.

Yearly travel infection rates from all exposure (origin) and reporting (destination) combinations were calculated by the number of travel-associated cases per 100,000 airline passenger journeys (from origin to destination/year). Exposure-reporting combinations that accounted for less than 80 imported cases were not included in this analysis; therefore, only data from Cuba, Dominican Republic, Haiti, Jamaica, and Puerto Rico are included. Air travel data were obtained as detailed below.

Air passenger volumes

We collected air passenger volumes to calculate dengue travel infection rates. We obtained the number of passengers traveling by air from Cuba, the Dominican Republic, Haiti, Jamaica, and Puerto Rico that disembarked in the US port of entry in Florida from 2009 to 2022 as international and domestic non-stop segment traffic reports (T100) from the Office of Data, Analytics, and Technology (DAT), Division of Global Migration Health (DGMH). The flight travel volume data were provided by OAG Aviation Worldwide Ltd. OAG DOT Analyser, T100 International and Domestic Segment Traffic Reports, Version 2.6.1 2023 (<https://analytics.oag.com/analyser-client/home>; accessed May 16, 2023). United States Department of Transportation (DOT) data includes all commercial chartered and military flights arriving in airports in the United States and includes origin and destination. One limitation of DOT data is that it does not include connecting flight information. However, as this would lead to a potential over-estimation of total travelers and, therefore, potentially an under-estimation of travel infection rates, we felt this was reasonable.

The air passenger data used in this study are proprietary and were purchased from OAG Aviation Worldwide Ltd. These data were used under the United States Centers for Disease Control and Prevention license for the current study, and so are not publicly available. The authors are available to share the air passenger data upon reasonable request and with the permission of OAG Aviation Worldwide Ltd.

Cruise and boat travel data were not included. There were very few infections linked with boat travel in our dataset, even between Cuba and Florida. There were also very few infections linked to cruise travel. It may be that these cases are more likely to be tourists who are subsequently diagnosed elsewhere (and just visiting Florida for the cruise departure) or that they may have different risk behaviors compared to air travelers.

Local cases and infection rates

PAHO is the primary source for information regarding dengue spread in the Americas, with data on suspected and confirmed cases for countries and territories within the

Americas with local transmission ⁷. We obtained yearly dengue case counts in Cuba, Dominican Republic, Haiti, Jamaica, and Puerto Rico from 2009-2022, as well as local dengue infection rates (suspected and confirmed dengue cases per 100,000 population). Infection rates were used as an estimate for infection likelihood to investigate sources of dengue introductions.

Estimated local dengue cases

We constructed a negative binomial regression model to predict local infection rates from the travel infection rates due to evidence of overdispersion in the initial Poisson regression model that was tested using the performance package in R (<https://cran.r-project.org/web/packages/performance/index.html>). Our final model can be seen below:

$$Y_t \sim \text{Negative Binomial}(r, p_t),$$

$$p_t = \frac{r}{r + \lambda_t},$$

$$\ln(\lambda_t) = \ln(\text{pop}_t) + \beta_0 + \beta_1 * \log(\text{Travel Infection Rate} + 0.02) + \beta_2 * \text{GDPcat} + \beta_3 * \text{Year}$$

We used two data types: locally acquired dengue cases by country and travel-associated dengue cases by country of origin to inform estimates of local infection rates in Cuba and Haiti on a scale comparable to local infections in the other three locations. A logarithmic relationship between travel and local infection rates was specified to account for high travel infections, particularly in Cuba. The value of 0.02 was added to avoid computational problems when travel infection rates equaled 0 and was selected via sensitivity analysis (lowest AIC score). Because we theorized that countries and territories with a higher GDP (obtained from <https://worldpopulationreview.com/countries>) would be able to devote more resources to finding and reporting local dengue cases, we created a variable by income, with lower-middle as GDP < 12,535 and upper as >12,535 (variable GDPcat). This ultimately placed Puerto Rico in the upper category and stratified the other four countries in the lower category. To account for the temporal trend in the outcome, we included a study year as a linear predictor in the model. We tested for autocorrelation in Puerto Rico, Jamaica, and the Dominican Republic separately using the Durbin-Watson test and found no significant autocorrelation (p-values of 0.90, 0.91, and 0.89, respectively). In addition, we tested a mixed model allowing for a country- or territory-specific random GDP effect that ultimately performed worse (AIC 752 compared to 749 for the fixed model) R code and data are available at: https://github.com/grubaughlab/2023_paper_DENV-travelers

Dengue virus sequencing

Patient serum samples were selected for study inclusion according to Ct values from prior FDOH Trioplex and serotype-specific PCR diagnostics and/or volume availability. In general, samples with a Ct value < 35 were aliquoted to provide 160µL per sample. Lesser volume samples were included if Ct value < 25. All samples were de-identified to maintain patient privacy and blind the study.

140µL or less of each sample was manually extracted using the QIAamp Viral RNA Mini Kit (Qiagen, Germantown, MD) following the protocol outlined in the manual unless otherwise specified. Linear acrylamide (Invitrogen by Thermo Fisher Scientific, Waltham, MA) was substituted, 1µL of 5mg/mL per sample, in place of the kit provided carrier RNA. Each sample was eluted in 60µL of ultrapure, nuclease-free water (Invitrogen by Thermo Fisher Scientific, Waltham, MA) and stored at -80°C. Sample extracts were kept frozen on dry ice during transport and shipped to collaborators for subsequent sequencing.

Dengue virus RNA was sequenced using a pan-serotype, highly multiplexed PCR approach called 'DengueSeq' (a derivative of PrimalSeq⁵⁵). A detailed protocol, including the DENV1-4 primer schemes, was previously published⁵⁶. In brief, we prepared libraries using the Illumina COVIDSeq test (RUO version) with the DENV1-4 primers, and pooled libraries were sequenced on the Illumina NovaSeq (paired-end 150), targeting 1 million reads per individual library. Consensus genomes were generated at a depth of coverage of 20X and a minimum frequency threshold of 0.75 using our DengueSeq bioinformatics pipeline⁵⁷, which includes iVar⁵⁸. All DENV genomes and sequencing data are available on BioProject PRJNA951702.

Phylogenetic analyses

To account for differences in sampling intensity globally and to highlight dynamics within the Caribbean; we performed sample selection on the global background dataset. We used all sequences sampled from the Caribbean and then took up to 10 sequences per country or territory per year per serotype, with a strict coverage cut-off applied to all sequences of 70%. We then aligned these sequences with MAFFT v.7.490⁵⁹ and manually curated them using Geneious v 2022.1.1 (<https://www.geneious.com>). We generated an initial Maximum Likelihood (ML) tree for each serotype separately using the HKY substitution model⁶⁰ in IQTree v2.1.4⁶¹. We put this ML tree into TempEST⁶² to assess the molecular clock signal and to identify molecular clock outliers, which were then removed⁶². Any remaining sylvatic sequences were also removed. The final dataset sizes therefore were DENV-1 n = 1095, DENV-2 n = 1406, DENV-3 n = 839, and DENV-4 n = 345.

In the interests of computational efficiency, we split the analysis into topology estimation and phylogeographic inference. We began by estimating the topology in BEAST v1.10.5⁶³ using a generalized time reversible (GTR) model⁶⁴, a gamma rate heterogeneity model with four categories⁶⁵, and a relaxed molecular clock⁶⁵ as in³⁸. The mean rate of each tree weighted by the branch lengths and followed by their 95% HPDs are: 6.61×10^{-4} (5.81×10^{-4} to 6.41×10^{-4}), 8.20×10^{-4} (7.78×10^{-4} to 8.65×10^{-4}), 6.69×10^{-4} (6.28×10^{-4} to 7.05×10^{-4}) and 7.68×10^{-4} (6.34×10^{-4} to 8.94×10^{-4}) substitutions/site/year for DENV-1 to -4, respectively.

We used a Skygrid coalescent model⁶⁶ with a Hamiltonian Monte Carlo (HMC) operator⁶⁷. We defined the gridpoints for effective population size estimation externally to be at the start of each year, every year until 2000, and then every 25 years until 1900 for DENV-1 and DENV-3, and every 50 years until 1710 for DENV-2 and every 50 years until 1750 for DENV-4. These gridpoints aimed to balance resolution in more recent years against computational efficiency, and final dates were placed slightly before the estimated roots of the trees, as described in⁶⁸.

The length and number of chains required for convergence and sufficient ESS values depended on the serotype but ranged between two and four chains of 100m-600m states with 10% - 60% removed for burn-in.

From each of these analyses, we took 500 trees from the post-burn-in posterior distribution to use as an empirical tree distribution to infer the geographic spread of each dengue virus serotype. We grouped together locations of sequences, starting with WHO regions (Africa, Europe, eastern Mediterranean, Southeast Asia, and western Pacific). The Americas were further split into South America, Central America plus Mexico, and the rest of North America. We also split the Caribbean into Jamaica, Haiti, Cuba, Dominican Republic, Puerto Rico, and other Caribbean. In total, there were 14 regions for DENV-1 and DENV-2, 12 for DENV-4, and 10 for DENV-3. Details of the number of sequences for each region can be found in **Table S1**. We performed a discrete asymmetric phylogeographic analysis using these regions and a CTMC prior⁶⁹. Each serotype analysis was run for two chains of 10m states, each with 10% removed for burnin. Assessment of convergence for every analysis was performed using Tracer⁶⁸.

Introductions were inferred using a custom Python script. Introductions were allowed to leave the country or territory/region of interest: that is, all downstream nodes in the country or territory of the first transition node were assigned to the same introduction regardless of nodes outside of the region in between. The time of introduction was

taken conservatively, as the time of the transition node itself. The XML files are available at: https://github.com/grubaughlab/2023_paper_DENV-travelers

Data availability

All DENV genomes and sequencing data are available on BioProject PRJNA951702. All code and model results are available at: https://github.com/grubaughlab/2023_paper_DENV-travelers

Acknowledgements

We acknowledge S. Taylor and P. Jack for technical discussions. This publication was made possible by the National Institute of Allergy and Infectious Diseases of the National Institutes of Health (NIH) under Award Number DP2AI176740 (NDG), CTSA Grant Number UL1 TR001863 from the National Center for Advancing Translational Science, a component of the NIH (CBFV), the NIH T32AI055403 (AS), The Dominican Ministry of Higher Education and Technology Fund (FONDOCYT-2022-1B3-069), the National Institute of General Medical Sciences R21GM142011 (SFM), and through a Cooperative Agreement between the US Centers for Disease Control and Prevention (CDC) and the International Society of Travel Medicine (ISTM) (Federal Award Number: 1 U01CK000632-01-00). The findings and conclusions in this report are those of the author(s) and do not necessarily represent the official position of the CDC, NIH, or FDOH.

References

1. Kimberlin, D. W., Barnett, E., Lynfield, R. & Sawyer, M. H. *Red Book 2021: Report of the Committee on Infectious Diseases*. (American Academy of Pediatrics, 2021).
2. Guzman, M. G. & Harris, E. Dengue. *Lancet* **385**, 453–465 (2015).
3. Bhatt, S. *et al.* The global distribution and burden of dengue. *Nature* **496**, 504–507 (2013).
4. Waggoner, J. J. *et al.* Homotypic Dengue Virus Reinfections in Nicaraguan Children. *J. Infect. Dis.* **214**, 986–993 (2016).
5. Christie, C. D. C., Lue, A. M. & Melbourne-Chambers, R. H. Dengue, chikungunya and zika arbovirus infections in Caribbean children. *Curr. Opin. Pediatr.* **35**, 155–165 (2023).
6. Verhagen, L. M. & de Groot, R. Dengue in children. *J. Infect.* **69 Suppl 1**, S77–86 (2014).

7. PAHO. *Dengue*
<https://www3.paho.org/data/index.php/en/mnu-topics/indicadores-dengue-en.html> (2022).
8. Brathwaite Dick, O. *et al.* The history of dengue outbreaks in the Americas. *Am. J. Trop. Med. Hyg.* **87**, 584–593 (2012).
9. Tapia-Conyer, R., Betancourt-Cravioto, M. & Méndez-Galván, J. Dengue: an escalating public health problem in Latin America. *Paediatr. Int. Child Health* **32 Suppl 1**, 14–17 (2012).
10. Weaver, S. C. Arrival of chikungunya virus in the new world: prospects for spread and impact on public health. *PLoS Negl. Trop. Dis.* **8**, e2921 (2014).
11. Fischer, M., Staples, J. E. & Arboviral Diseases Branch, National Center for Emerging and Zoonotic Infectious Diseases, CDC. Notes from the field: chikungunya virus spreads in the Americas - Caribbean and South America, 2013-2014. *MMWR Morb. Mortal. Wkly. Rep.* **63**, 500–501 (2014).
12. Santiago, G. A. *et al.* Tracing the Origin, Spread, and Molecular Evolution of Zika Virus in Puerto Rico, 2016-2017. *Emerg. Infect. Dis.* **27**, 2971–2973 (2021).
13. Faria, N. R. *et al.* Establishment and cryptic transmission of Zika virus in Brazil and the Americas. *Nature* **546**, 406–410 (2017).
14. Worsley-Tonks, K. E. L. *et al.* Strengthening global health security by improving disease surveillance in remote rural areas of low-income and middle-income countries. *Lancet Glob Health* **10**, e579–e584 (2022).
15. Magalhães, A. R. *et al.* Neglected tropical diseases risk correlates with poverty and early ecosystem destruction. *Infect Dis Poverty* **12**, 32 (2023).
16. Da Conceição Araújo, D. *et al.* Determining the association between dengue and social inequality factors in north-eastern Brazil: A spatial modelling. *Geospat. Health* **15**, (2020).
17. do Carmo, R. F., Silva Júnior, J. V. J., Pastor, A. F. & de Souza, C. D. F. Spatiotemporal dynamics, risk areas and social determinants of dengue in Northeastern Brazil, 2014-2017:

- an ecological study. *Infect Dis Poverty* **9**, 153 (2020).
18. Grubaugh, N. D. *et al.* Travel Surveillance and Genomics Uncover a Hidden Zika Outbreak during the Waning Epidemic. *Cell* **178**, 1057–1071.e11 (2019).
 19. Leder, K. *et al.* Zika beyond the Americas: Travelers as sentinels of Zika virus transmission. A GeoSentinel analysis, 2012 to 2016. *PLoS One* **12**, e0185689 (2017).
 20. Wilder-Smith, A., Chang, C. R. & Leong, W. Y. Zika in travellers 1947-2017: a systematic review. *J. Travel Med.* **25**, (2018).
 21. Hamer, D. H. *et al.* Travel-Associated Zika Virus Disease Acquired in the Americas Through February 2016: A GeoSentinel Analysis. *Ann. Intern. Med.* **166**, 99–108 (2017).
 22. Harvey, K. *et al.* Surveillance for travel-related disease--GeoSentinel Surveillance System, United States, 1997-2011. *MMWR Surveill. Summ.* **62**, 1–23 (2013).
 23. Leder, K. *et al.* GeoSentinel surveillance of illness in returned travelers, 2007-2011. *Ann. Intern. Med.* **158**, 456–468 (2013).
 24. Angelo, K. M. *et al.* Zika among international travellers presenting to GeoSentinel sites, 2012-2019: implications for clinical practice. *J. Travel Med.* **27**, (2020).
 25. Osman, S. & Preet, R. Dengue, chikungunya and Zika in GeoSentinel surveillance of international travellers: a literature review from 1995 to 2020. *J. Travel Med.* **27**, (2020).
 26. Fraser, C. *et al.* Pandemic potential of a strain of influenza A (H1N1): early findings. *Science* **324**, 1557–1561 (2009).
 27. The World Bank in the Caribbean. *World Bank*
<https://www.worldbank.org/en/country/caribbean/overview> (2023).
 28. Wilson, M. E. *et al.* Fever in returned travelers: results from the GeoSentinel Surveillance Network. *Clin. Infect. Dis.* **44**, 1560–1568 (2007).
 29. Fink, D., Wani, R. S. & Johnston, V. Fever in the returning traveller. *BMJ* **360**, j5773 (2018).
 30. Marks, M., Johnston, V. & Brown, M. 150 - Fever in the Returned Traveler. in *Hunter's Tropical Medicine and Emerging Infectious Diseases (Tenth Edition)* (eds. Ryan, E. T., Hill,

- D. R., Solomon, T., Aronson, N. E. & Endy, T. P.) 1077–1086 (Elsevier, 2020).
31. Rey, J. R. Dengue in Florida (USA). *Insects* **5**, 991–1000 (2014).
 32. Díaz-Menéndez, M. *et al.* Dengue outbreak amongst travellers returning from Cuba-GeoSentinel surveillance network, January-September 2022. *J. Travel Med.* **30**, (2023).
 33. Naveca, F. G. *et al.* Reemergence of dengue virus serotype 3, Brazil, 2023. *bioRxiv* (2023) doi:10.1101/2023.05.03.23288351.
 34. Torres, J. R., Orduna, T. A., Piña-Pozas, M., Vázquez-Vega, D. & Sarti, E. Epidemiological Characteristics of Dengue Disease in Latin America and in the Caribbean: A Systematic Review of the Literature. *J. Trop. Med.* **2017**, 8045435 (2017).
 35. Gómez-Dantés, H. & Willoquet, J. R. Dengue in the Americas: challenges for prevention and control. *Cad. Saude Publica* **25 Suppl 1**, S19–31 (2009).
 36. Gossner, C. M. *et al.* Dengue virus infections among European travellers, 2015 to 2019. *Euro Surveill.* **27**, (2022).
 37. Ryff, K. R. *et al.* Epidemiologic Trends of Dengue in U.S. Territories, 2010-2020. *MMWR Surveill. Summ.* **72**, 1–12 (2023).
 38. Brito, A. F. *et al.* Lying in wait: the resurgence of dengue virus after the Zika epidemic in Brazil. *Nat. Commun.* **12**, 2619 (2021).
 39. Santos, L. L. M., de Aquino, E. C., Fernandes, S. M., Ternes, Y. M. F. & Feres, V. C. de R. Dengue, chikungunya, and Zika virus infections in Latin America and the Caribbean: a systematic review. *Rev. Panam. Salud Publica* **47**, e34 (2023).
 40. FDOH. *Dengue Fever* <https://www.floridahealth.gov/diseases-and-conditions/dengue/> (2022).
 41. Guzman, M. G. & Kouri, G. Dengue and dengue hemorrhagic fever in the Americas: lessons and challenges. *J. Clin. Virol.* **27**, 1–13 (2003).
 42. MMWR. Dengue type 3 infection—Nicaragua and Panamá, October–November, 1994.

MMWR 21–24 (1995).

43. Guzmán, M. G., Huelva, G., Saenz, E. & Quiroz, E. Reintroducción del dengue 3 en las Américas: 1994-1996. *Arch. Venez. Med. Trop. Parasitol. Med.* (1998).
44. Figueroa, R. & Ramos, C. Dengue virus (serotype 3) circulation in endemic countries and its reappearance in America. *Arch. Med. Res.* **31**, 429–430 (2000).
45. Briseño-García, B. *et al.* Potential risk for dengue hemorrhagic fever: the isolation of serotype dengue-3 in Mexico. *Emerg. Infect. Dis.* **2**, 133–135 (1996).
46. Santiago, G. A. *et al.* Reemergence and decline of dengue virus serotype 3 in Puerto Rico. *J. Infect. Dis.* **206**, 893–901 (2012).
47. L’Azou, M. *et al.* Dengue seroprevalence in the French West Indies: a prospective study in adult blood donors. *Am. J. Trop. Med. Hyg.* **92**, 1137–1140 (2015).
48. Loroño-Pino, M. A. *et al.* Common occurrence of concurrent infections by multiple dengue virus serotypes. *Am. J. Trop. Med. Hyg.* **61**, 725–730 (1999).
49. N Sirisena, P. D. N., Mahilkar, S., Sharma, C., Jain, J. & Sunil, S. Concurrent dengue infections: Epidemiology & clinical implications. *Indian J. Med. Res.* **154**, 669–679 (2021).
50. Andrade, E. H. P. *et al.* Spatial-Temporal Co-Circulation of Dengue Virus 1, 2, 3, and 4 Associated with Coinfection Cases in a Hyperendemic Area of Brazil: A 4-Week Survey. *Am. J. Trop. Med. Hyg.* **94**, 1080–1084 (2016).
51. Sharp, T. M., Ryff, K. R., Santiago, G. A., Margolis, H. S. & Waterman, S. H. Lessons Learned from Dengue Surveillance and Research, Puerto Rico, 1899-2013. *Emerg. Infect. Dis.* **25**, 1522–1530 (2019).
52. Boyette, C. US Coast Guard returns 273 migrants intercepted off Florida Coast to Cuba. *CNN* (2023).
53. FL DOH. *Mosquito-Borne Disease Surveillance* <http://www.floridahealth.gov/diseases-and-conditions/mosquito-borne-diseases/surveillance.html>. (2022).
54. Santiago, G. A. *et al.* Analytical and clinical performance of the CDC real time RT-PCR

- assay for detection and typing of dengue virus. *PLoS Negl. Trop. Dis.* **7**, e2311 (2013).
55. Quick, J. *et al.* Multiplex PCR method for MinION and Illumina sequencing of Zika and other virus genomes directly from clinical samples. *Nat. Protoc.* **12**, 1261–1276 (2017).
56. Vogels, C. *et al.* DengueSeq: A pan-serotype whole genome amplicon sequencing protocol for dengue virus. *protocols.io*
<https://www.protocols.io/view/denguese-q-a-pan-serotype-whole-genome-amplicon-seq-kqdg39xxeg25/v2> (2022) doi:10.17504/protocols.io.kqdg39xxeg25/v1.
57. Hill, V., Chaguza, C. & Lab, G. DENV_pipeline.
https://github.com/grubaughlab/DENV_pipeline (2023).
58. Grubaugh, N. D. *et al.* An amplicon-based sequencing framework for accurately measuring intrahost virus diversity using PrimalSeq and iVar. *Genome Biol.* **20**, 8 (2019).
59. Katoh, K. & Standley, D. M. MAFFT multiple sequence alignment software version 7: improvements in performance and usability. *Mol. Biol. Evol.* **30**, 772–780 (2013).
60. Hasegawa, M., Kishino, H. & Yano, T. Dating of the human-ape splitting by a molecular clock of mitochondrial DNA. *J. Mol. Evol.* **22**, 160–174 (1985).
61. Minh, B. Q. *et al.* IQ-TREE 2: New Models and Efficient Methods for Phylogenetic Inference in the Genomic Era. *Mol. Biol. Evol.* **37**, 1530–1534 (2020).
62. Rambaut, A., Lam, T. T., Max Carvalho, L. & Pybus, O. G. Exploring the temporal structure of heterochronous sequences using TempEst (formerly Path-O-Gen). *Virus Evol* **2**, vew007 (2016).
63. Suchard, M. A. *et al.* Bayesian phylogenetic and phylodynamic data integration using BEAST 1.10. *Virus Evol* **4**, vey016 (2018).
64. Tarvare, S. Some probabilistic and statistical problems in the analysis of DNA sequences. *Some mathematical question in biology-DNA sequence analysis* (1986).
65. Yang, Z. Maximum likelihood phylogenetic estimation from DNA sequences with variable rates over sites: approximate methods. *J. Mol. Evol.* **39**, 306–314 (1994).

66. Gill, M. S. *et al.* Improving Bayesian population dynamics inference: a coalescent-based model for multiple loci. *Mol. Biol. Evol.* **30**, 713–724 (2013).
67. Baele, G., Gill, M. S., Lemey, P. & Suchard, M. A. Hamiltonian Monte Carlo sampling to estimate past population dynamics using the skygrid coalescent model in a Bayesian phylogenetics framework. *Wellcome Open Res* **5**, 53 (2020).
68. Hill, V. & Baele, G. Bayesian Estimation of Past Population Dynamics in BEAST 1.10 Using the Skygrid Coalescent Model. *Mol. Biol. Evol.* **36**, 2620–2628 (2019).
69. Ferreira, M. A. R. & Suchard, M. A. Bayesian analysis of elapsed times in continuous-time Markov chains. *Can. J. Stat.* **36**, 355–368 (2008).

Supplement

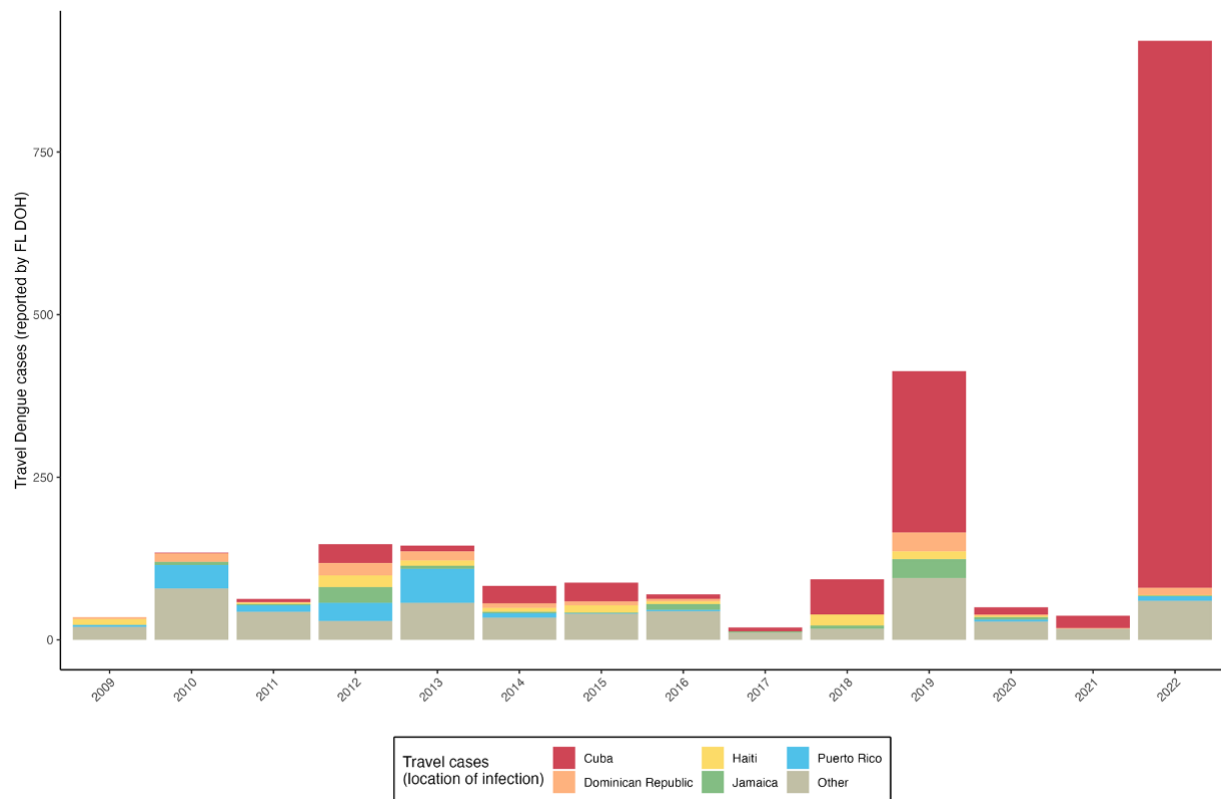


Figure S1. Total number of travel-associated dengue cases reported in Florida from 2009 to 2022. Travel-associated dengue cases per year for the top five locations of travel/exposure shown in **Figure 1**.

Travel cases from locations outside the top five were combined into the “Other” category. Overall, there were 1283 travel cases from Cuba (57.4%), 106 cases from Dominican Republic (4.7%), 85 cases from Haiti (3.8%), 90 cases from Jamaica (4.0%) and 149 cases from Puerto Rico (6.5%).

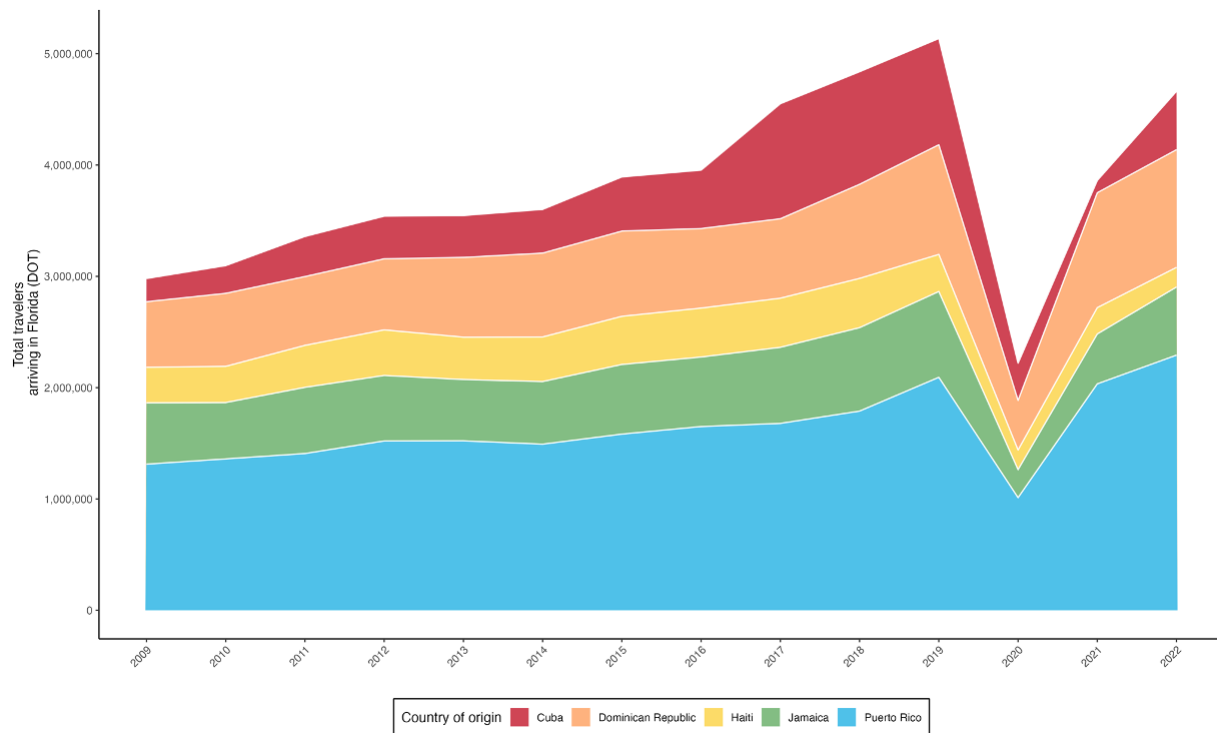


Figure S2. Total number of air passenger journeys from Caribbean countries and territories into Florida from 2009 to 2022. Total number of air passenger journeys reported by the United States Department of Transportation (DOT) from the top five locations of travel/exposure shown in **Figure 1**. These data were used to calculate the dengue travel infection rates shown in **Figure 2** and used in the model in **Figure 3**. Air travel was low in 2020 due to COVID-19 pandemic travel restrictions.

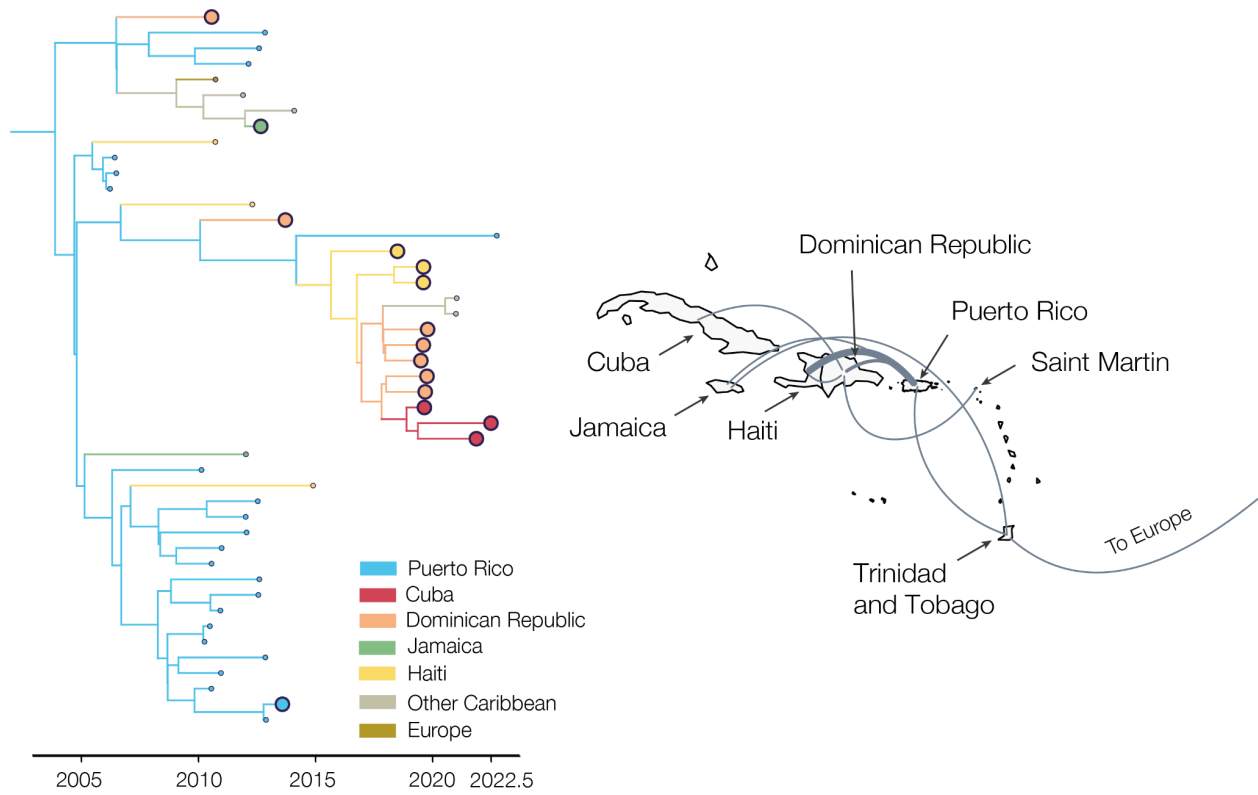


Figure S3. Within-Caribbean spread of a DENV-2 clade.

Time-scaled subtree of DENV-2 colored by inferred and sampled locations. Shows transitions from Puerto Rico, mostly to the Dominican Republic, and further onto Haiti and Cuba. Map shows the region, with “Other Caribbean” movements going directly to the islands in question.

Table S1. Total travel-associated dengue cases reported by the FDOH from 2009-2022, broken down by region, country or territory, year and serotype. Serotype data was not available for all cases. For Cuba in 2019 and 2022, both the total number of cases and the number of cases first identified through syndromic surveillance are included.

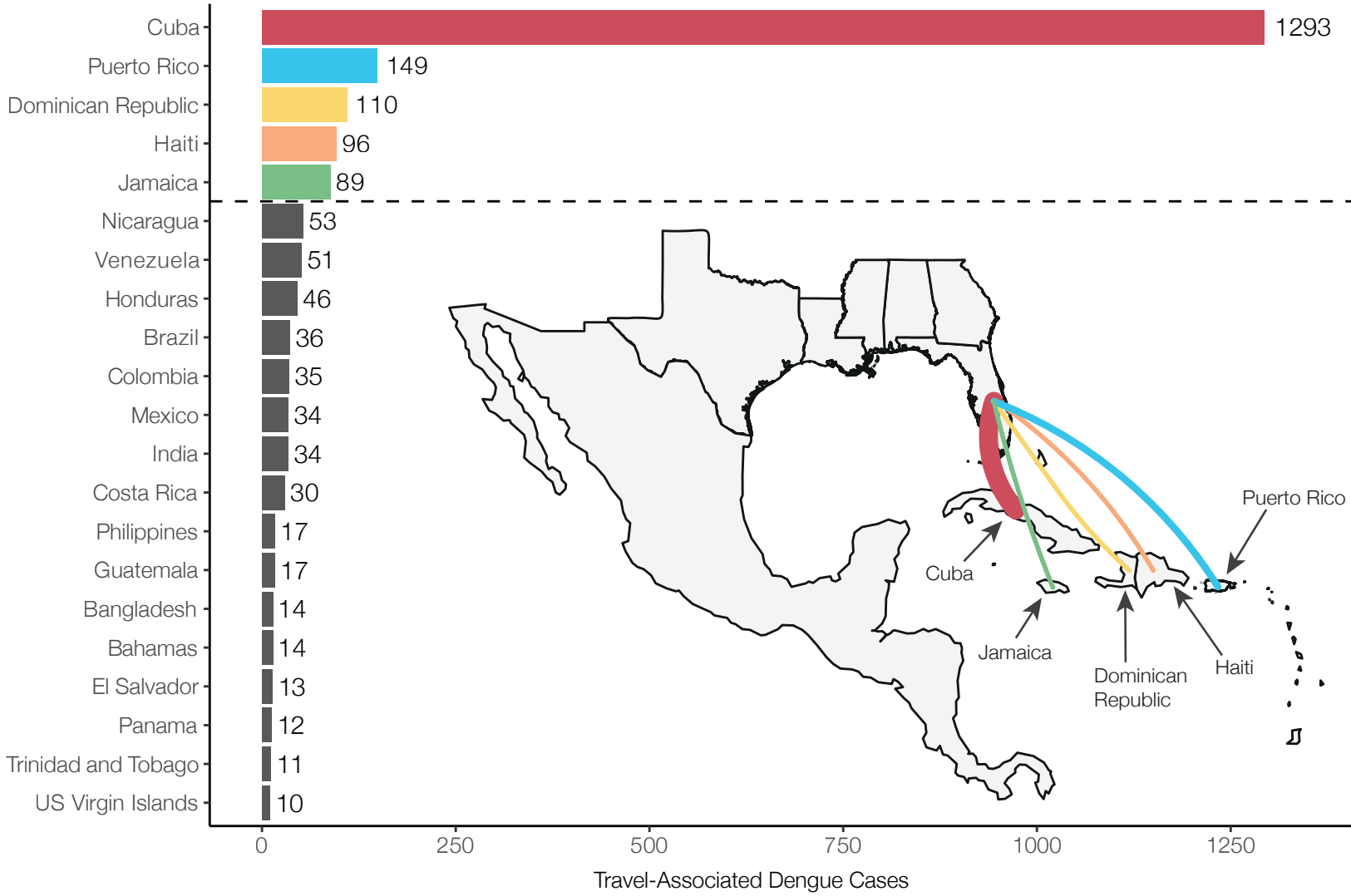
Travel-associated dengue cases							
Reported by Florida Department of Health							
Country of Likely Exposure	Year	DENV-1	DENV-2	DENV-3	DENV-4	Mixed	Total Cases (syndromic)
Caribbean							
Antigua and Barbuda	2019	0	0	1	0	0	1
Antigua and Barbuda	2020	0	0	1	0	0	1
Aruba	2011	0	0	0	0	0	1
Bahamas	2020	1	0	0	0	0	1
Bahamas	2011	8	0	0	0	0	13
Barbados	2013	0	0	0	0	0	1
Belize	2019	0	2	0	0	0	2
Caribbean	2013	1	0	0	1	0	2
Caribbean	2014	0	0	0	0	0	1
Caribbean	2022	0	0	1	0	0	1
Cayman Islands	2010	0	0	0	0	0	1
Cuba	2013	1	2	1	2	0	9
Cuba	2014	3	5	2	1	0	27
Cuba	2020	6	1	1	0	0	11
Cuba	2021	8	5	1	0	1	19
Cuba	2019	18	192	0	0	3	248 (18)
Cuba	2022	43	91	550	49	7	848 (397)
Cuba	2010	0	0	0	0	0	1
Cuba	2011	0	0	0	2	0	5
Cuba	2012	0	0	1	17	1	29
Cuba	2015	0	5	11	0	1	29
Cuba	2016	0	0	3	2	0	7
Cuba	2017	0	6	0	0	0	6
Cuba	2018	0	41	0	0	0	54
Cuba/Bahamas	2014	0	1	0	0	0	1
Cuba/Jamaica	2019	0	0	1	0	0	1
Dominica	2013	0	0	0	1	0	1
Dominica	2019	0	0	2	0	0	3
Dominican Republic	2014	1	2	0	2	0	7
Dominican Republic	2015	1	2	0	0	0	6
Dominican Republic	2022	1	9	0	0	0	11
Dominican Republic	2010	2	1	0	0	0	13
Dominican Republic	2020	2	0	0	0	0	2
Dominican Republic	2013	6	0	0	0	0	14
Dominican Republic	2012	7	2	0	1	0	19
Dominican Republic	2019	24	1	0	0	0	29
Dominican Republic	2009	0	0	0	0	0	3
Dominican Republic	2011	0	1	0	0	0	1
Dominican Republic	2016	0	0	0	0	0	4
Dominican Republic	2021	0	1	0	0	0	1

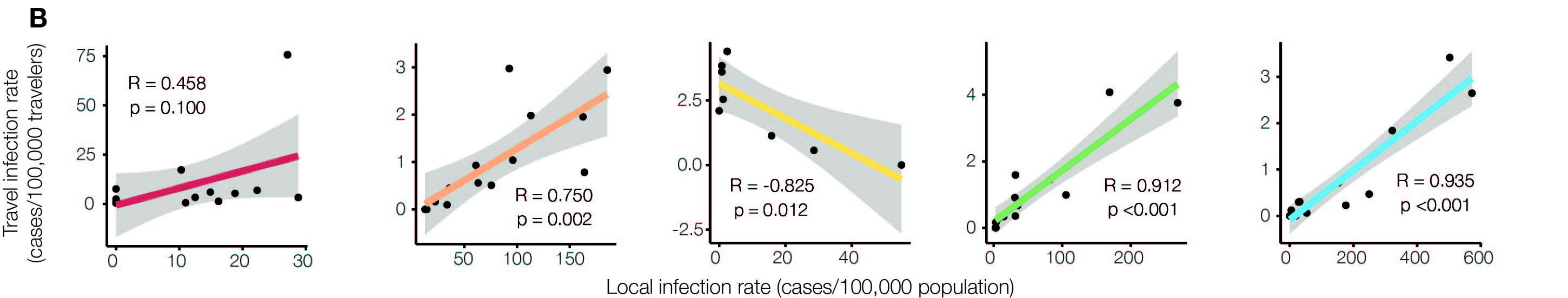
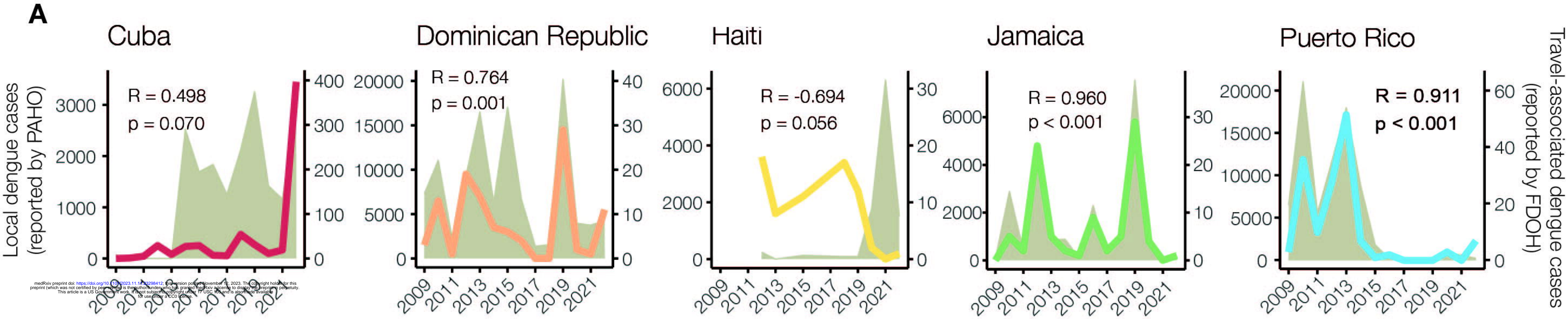
Table S2 Number of sequences in phylogeographic discrete trait analysis by region and serotype obtained from GenBank and after down-sampling.

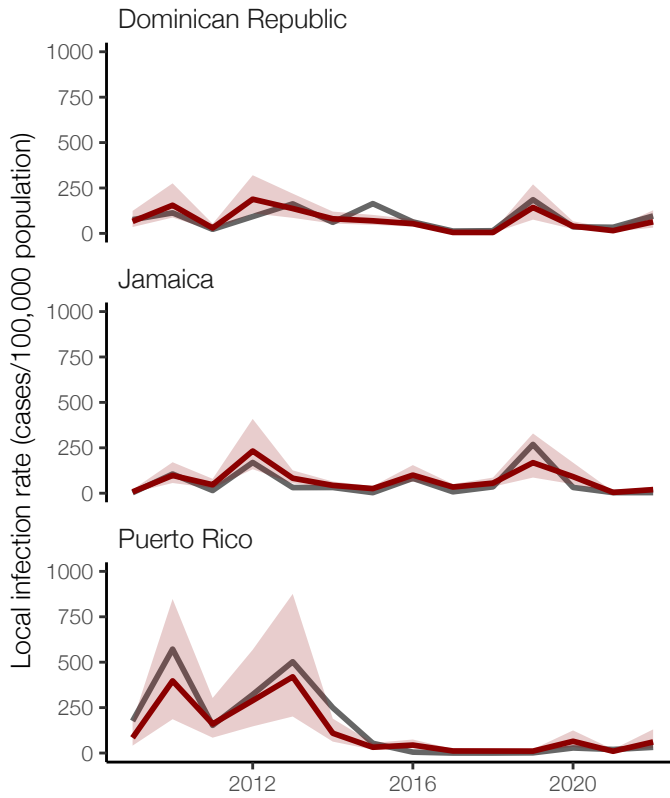
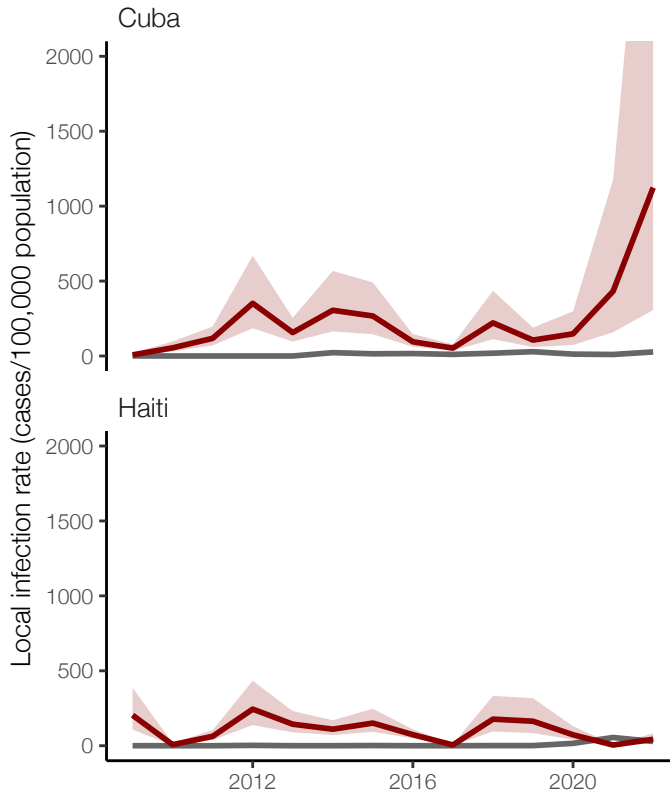
Region	DENV-1	DENV-2	DENV-3	DENV-4
Africa	43	78	16	2
Central America	84	109	47	9
Cuba	22	108	165	18
Dominican Republic	7	19	0	3
Eastern Mediterranean	8	30	9	1
Europe	6	2	0	0
Haiti	6	3	0	5
Jamaica	3	3	10	1
North America	1	5	0	0
Other Caribbean	19	12	11	2
Puerto Rico	55	199	108	45
South America	212	217	159	55
South East Asia	220	258	182	117
Western Pacific	409	363	132	87

Table S3 Number of sequences from travelers by country or territory and serotype sequenced in this study.

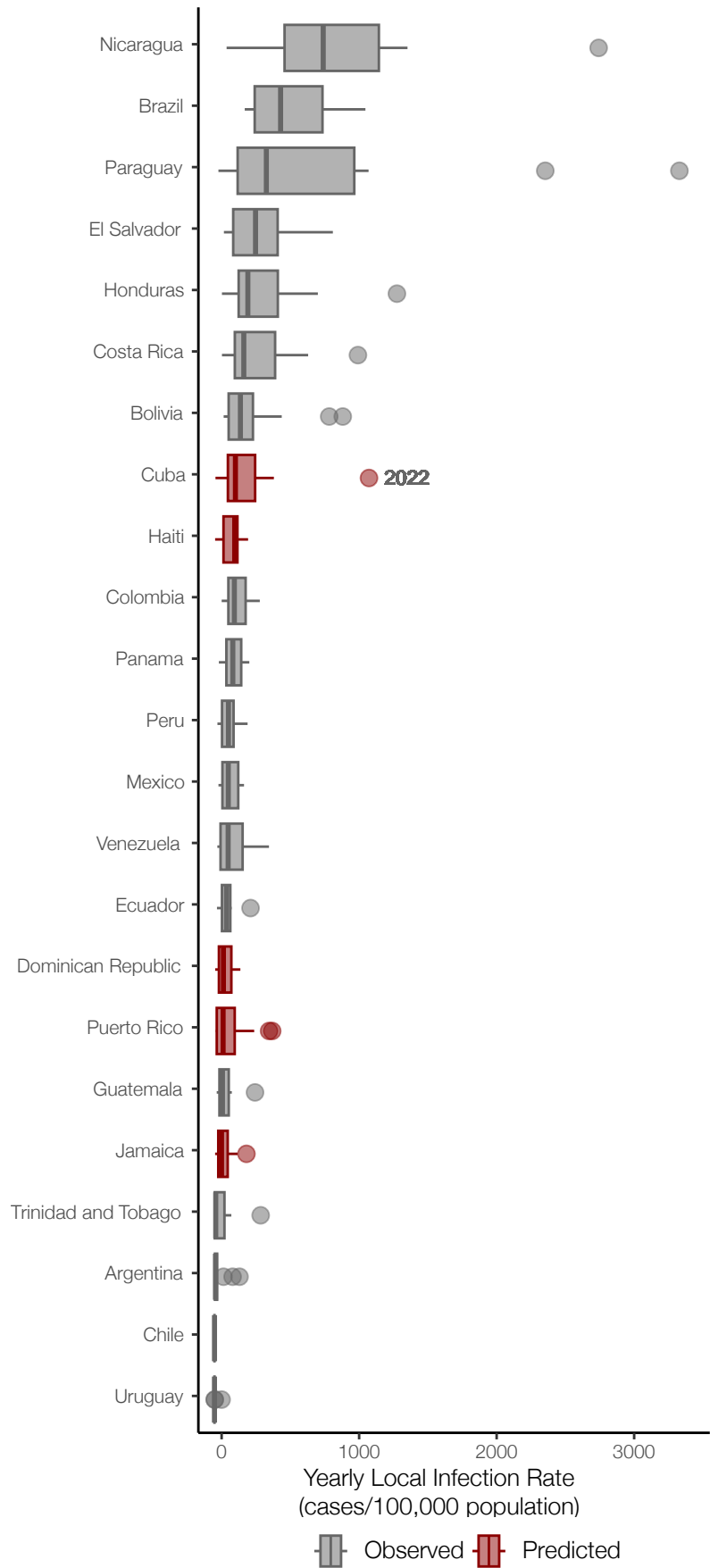
Country	DENV-1	DENV-2	DENV-3	DENV-4
Bolivia	2	0	0	1
Brazil	3	0	0	0
Cambodia	1	0	0	0
Colombia	1	1	1	0
Costa Rica	1	1	0	0
Cuba	21	88	96	14
Dominica	0	0	0	1
Dominican Republic	7	2	0	1
El Salvador	0	0	0	1
Guatemala	0	1	0	0
Haiti	3	1	0	1
Honduras	1	4	0	0
India	0	3	0	0
Jamaica	1	0	10	1
Mexico	2	3	0	0
Nicaragua	0	7	0	2
Paraguay	0	0	0	1
Philippines	0	1	0	0
Puerto Rico	1	2	0	4
Saint Lucia	0	0	1	0
Venezuela	2	2	0	0

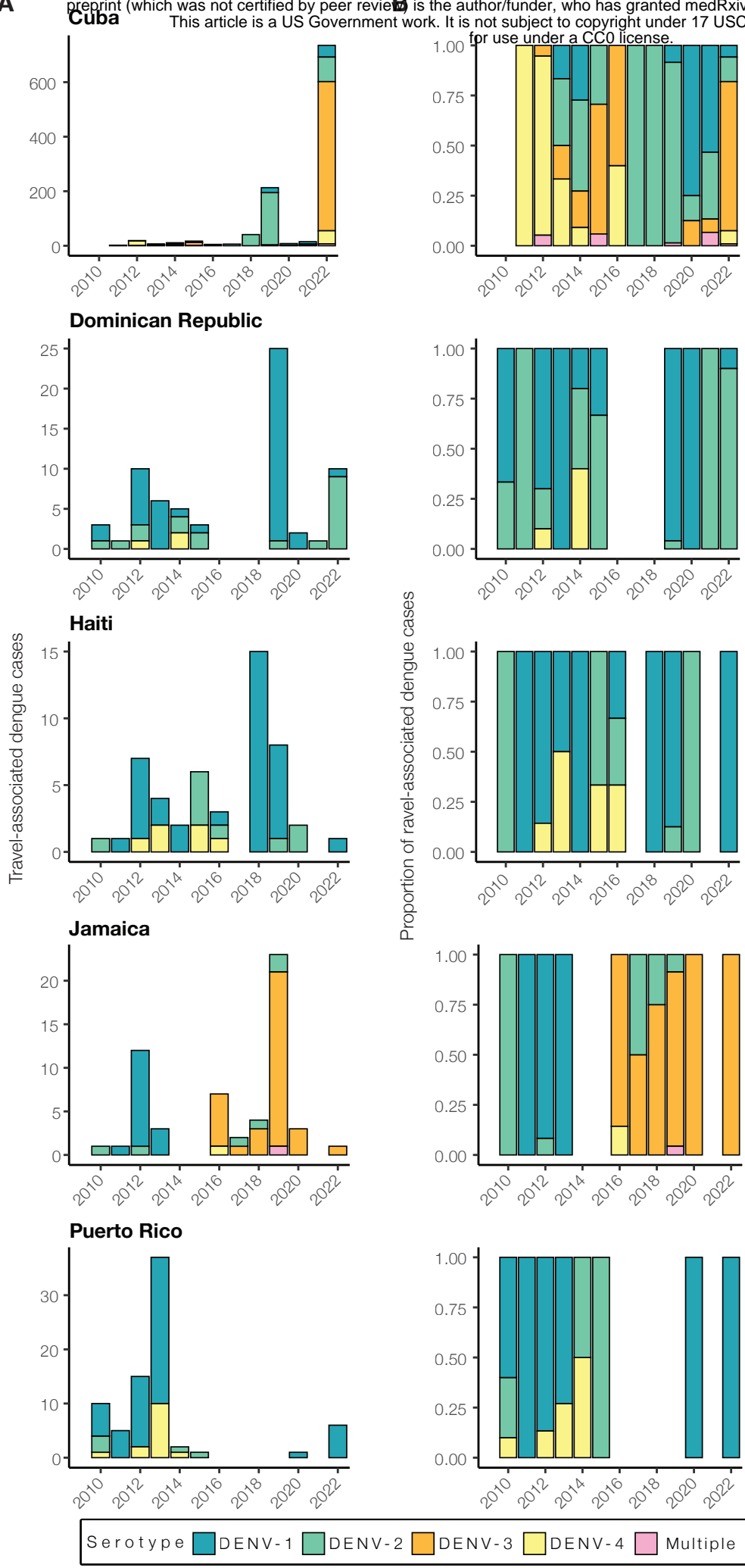




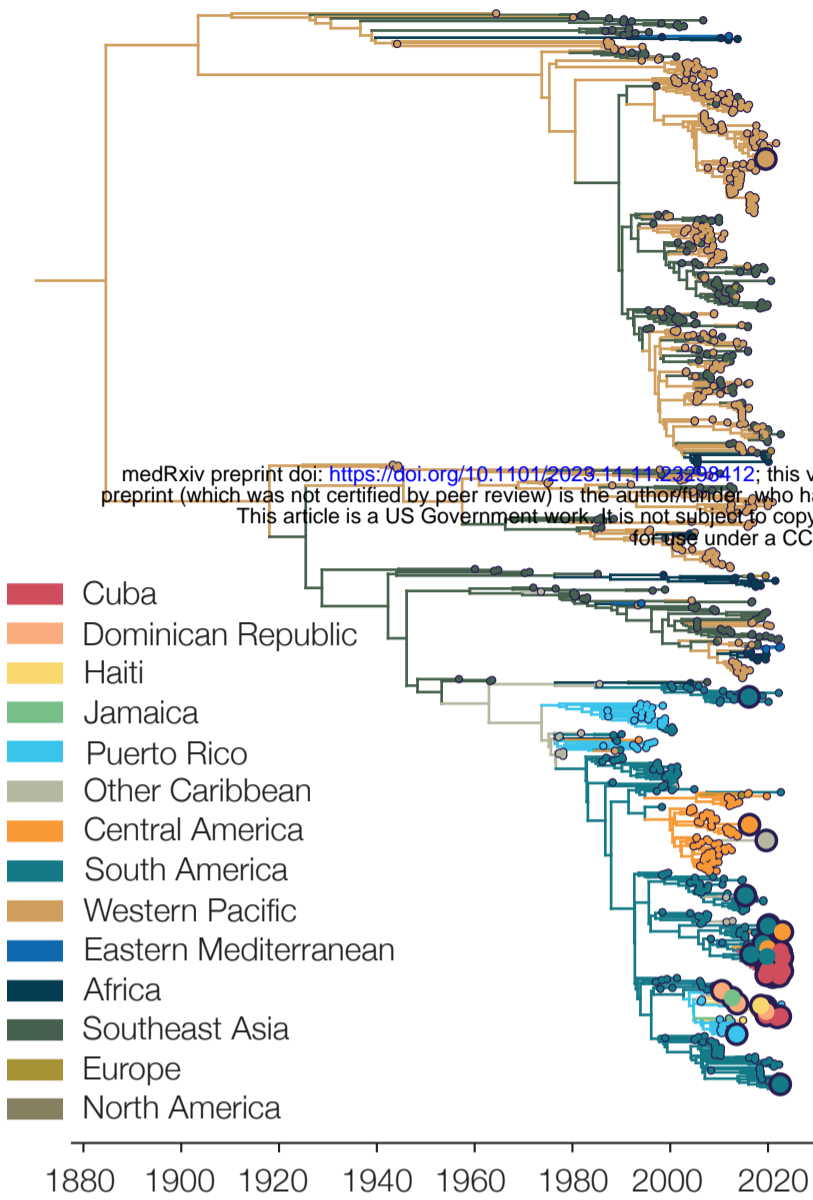
A**B**

— Observed — Predicted

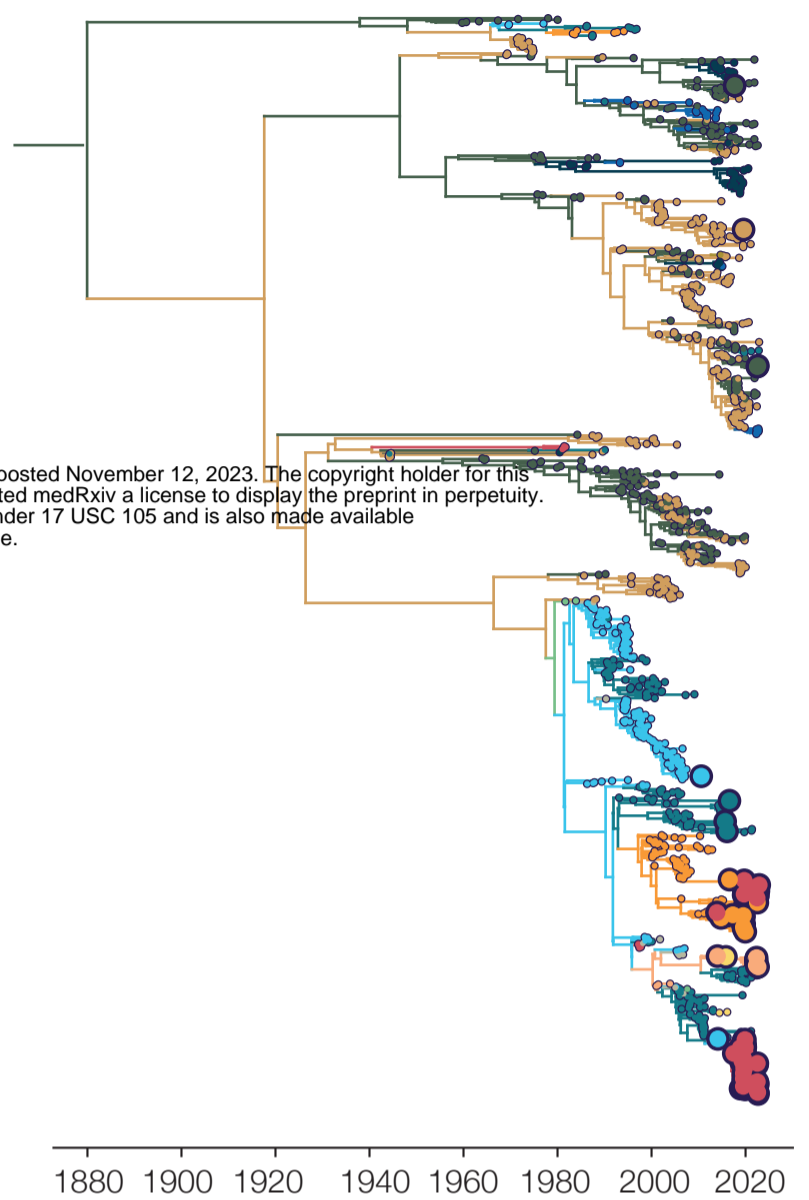
C



DENV-1



DENV-2



DENV-3



DENV-4

