

1 **Chronotropic Incompetence among People with HIV Improves with Exercise Training in**
2 **the Exercise for Healthy Aging Study**

3 Short Title: Chronotropic Incompetence in HIV Improves with Exercise Training

4 Authors: Matthew S. Durstenfeld¹, Melissa P. Wilson², Catherine M. Jankowski³, Grace L.
5 Ditzenberger², Chris T. Longenecker⁴, Kristine M. Erlandson²

6

7 Affiliations:

- 8 1) Division of Cardiology at ZSFG and Department of Medicine, University of California,
9 San Francisco (UCSF), USA
10 2) Department of Medicine, University of Colorado, Anschutz Medical Campus, Aurora,
11 Colorado, USA
12 3) College of Nursing, University of Colorado, Anschutz Medical Campus, Aurora,
13 Colorado, USA
14 4) Division of Cardiology and Department of Global Health, University of Washington
15 Medical Center, Seattle, WA, USA

16 **Corresponding author:**

17 Matthew S. Durstenfeld, MD MAS
18 Division of Cardiology, UCSF at Zuckerberg San Francisco General Hospital
19 1001 Potrero Avenue, 5G8
20 San Francisco, CA 94110, USA
21 Tel: +1 628 206 5562; Fax: +1 628 206 5447
22 e-mail: matthew.durstenfeld@ucsf.edu
23 twitter: @durstenfeld

24 Word Count: 2943

25 **Keywords:** HIV, cardiorespiratory fitness, chronotropic incompetence, exercise training, VO₂,
26 adjusted heart rate reserve/chronotropic index

27

28 **Disclosures:**

29

30 **Funding:** This study was funded by the National Institute on Aging to Dr. Erlandson (K23
31 AG050260 and K24AG082527). Dr. Durstenfeld is funded by NIH grant NIH/NLBI (K12
32 HL143961).

33 **Abstract**

34 **Background:** People with HIV (PWH) have lower exercise capacity compared to HIV-
35 uninfected peers, which may be explained by chronotropic incompetence (CI), the inability to
36 increase heart rate during exercise.

37 **Methods:** The Exercise for Healthy Aging Study included adults ages 50-75 with and without
38 HIV. Participants completed 12 weeks of moderate intensity exercise, before randomization to
39 moderate or high intensity for 12 additional weeks. We compared adjusted heart rate reserve
40 (AHRR; CI <80%) on cardiopulmonary exercise testing by HIV serostatus, and change from
41 baseline to 12 and 24 weeks using mixed effects models.

42 **Results:** Among 32 PWH and 37 controls (median age 56, 7% female, mean BMI 28 kg/m²),
43 28% of PWH compared to 11% of controls had CI at baseline (p=0.067). AHRR was lower
44 among PWH (91 vs 102%; difference 11%, 95% CI 2.5-19.7; p=0.01). At week 12, AHRR
45 normalized among PWH (+8%, 95% CI 4-11; p<0.001) and was sustained at week 24 (+5,
46 95% CI 1-9; p=0.008) compared to no change among controls (95% CI -4 to 4; p=0.95;
47 p_{interaction}=0.004). After 24 weeks of exercise, only 15% PWH and 10% of controls had CI
48 (p=0.70).

49 **Conclusions:** Chronotropic incompetence contributes to reduced exercise capacity among PWH
50 and improves with exercise training.

51

52 **Introduction**

53 People with HIV (PWH) have excess cardiovascular disease [1] and reduced
54 cardiorespiratory fitness (peak exercise capacity) compared to the general population without
55 HIV [2-7]. A major contributor to reduced cardiorespiratory fitness among PWH may be
56 chronotropic incompetence, which occurs in approximately one third of PWH [8, 9].
57 Chronotropic incompetence is the inability to increase heart rate adequately during exercise to
58 meet increased metabolic demands, which results in a lower peak exercise capacity. The gold-
59 standard test for chronotropic incompetence is cardiopulmonary exercise testing (CPET) which
60 includes measurement of gas exchange to quantify exercise capacity in terms of oxygen
61 consumption (peak VO_2). Among people without HIV, chronotropic incompetence even among
62 asymptomatic individuals without cardiovascular disease is associated with increased risk of
63 development of incident cardiovascular disease and mortality [10-14]. The two prior studies of
64 chronotropic incompetence among PWH were both cross-sectional and did not include
65 assessments of body composition or baseline physical activity which could be unmeasured
66 confounders in the observed association between HIV and chronotropy [8, 9].

67 Little is known about treatment of chronotropic incompetence outside of populations of
68 people with heart failure. In that patient population, implanting pacemakers to increase maximal
69 exertional heart rate does not improve symptoms or exercise capacity [15]. In contrast,
70 supervised exercise training improves chronotropy and exercise capacity among people with
71 heart failure [16]. Observational data among people with pacemakers suggests that
72 improvements in chronotropy are associated with improved quality of life [17]. However,
73 whether a supervised exercise training program modifies chronotropic incompetence among
74 people without heart failure, especially among PWH, has not been studied to our knowledge.

75 Therefore, we designed this secondary analysis of the Exercise for Healthy Aging Study,
76 a clinical trial of a supervised exercise training intervention among people with and without HIV,
77 to test the hypotheses that (1) HIV would be associated with chronotropic incompetence at
78 baseline, and (2) chronotropy would improve with exercise training.

79 **Methods**

80 *Study Design:* This study is a secondary analysis of the Exercise For Healthy Aging Study, a
81 clinical trial of an exercise intervention among sedentary adults age 50-75 with and without HIV
82 from 2014-2017 (clinicaltrials.gov NCT02404792).[18] Participants exercised at moderate
83 intensity for weeks 1-12 and were then randomized to continue moderate or advance to a higher
84 intensity of exercise for weeks 13-24.

85 *Participants:* The Exercise for Healthy Aging study enrolled people with HIV (PWH) and HIV-
86 uninfected controls age 50-75 years who were sedentary (<60 minutes of physical activity each
87 week for 6 months by self-report) and without contraindications to participating in an exercise
88 program; PWH were required to be on stable antiretroviral therapy with viral load < 200
89 copies/mL and CD4 count greater than 200 cells/ μ L. Full inclusion and exclusion criteria have
90 been published [18].

91 *Study Procedures:*

92 *Cardiopulmonary Exercise Testing:* All participants underwent a symptom-limited graded CPET
93 using a treadmill at baseline, 12 weeks, and 24 weeks as previously described [18]. The speed
94 was adjusted to initially target 70% of the age-predicted maximum heart rate with the grade
95 increased by 2% every 2 minutes until volitional exhaustion or test termination for safety.
96 Participants who did not initially reach 85% of maximum predicted heart rate on the baseline

97 study were required to undergo cardiology consultation prior to proceeding, and one person
98 received revascularization and then was subsequently rescreened.

99 *Exercise Training Intervention:* Details of the intervention have been previously published [18].
100 Briefly, participants attended in-person, supervised exercise training program 3 times weekly for
101 24 weeks. The program started with 2 weeks of low-intensity exercise followed by 10 weeks of
102 moderate-intensity exercise including both aerobic endurance exercise performed on a treadmill
103 and strength training. At 12 weeks, participants underwent repeat CPET and were randomized to
104 continue moderate intensity exercise or advance to high-intensity for an additional 12 weeks.
105 Following completion of the 24-week program, participants underwent repeat CPET.

106 *Primary Exposure:* The primary exposure of interest was HIV infection.

107 *Primary Outcomes:* The primary outcomes of interest were the adjusted heart rate reserve
108 (AHRR), a measure of exertional chronotropy defined by $AHRR = (HR_{peak} - HR_{rest}) / (220 - Age -$
109 $HR_{rest})$. Chronotropic incompetence as a binary variable was defined by an adjusted heart rate
110 reserve $< 80\%$. Participants on chronotropic medications (beta-blockers, calcium channel
111 blockers) were considered to have chronotropic incompetence if $AHRR < 62\%$ [19, 20]. The
112 primary longitudinal outcomes were change in AHRR and chronotropic incompetence at 12
113 weeks and 24 weeks.

114 *Secondary Outcomes:* The main secondary outcome was exercise capacity as measured by the
115 peak oxygen consumption (Peak VO_2) during CPET.

116 *Covariates:* We included age, sex, body mass index, body composition variables assessed using
117 dual energy x-ray absorptiometry (DEXA) as previously reported [21], hypertension, diabetes,
118 and HIV specific factors including nadir and current $CD4^+$ cell count, years with diagnosis with

119 HIV, years of treatment with antiretroviral therapy (ART), and current and prior ART
120 medications. Baseline physical activity was assessed using the International Physical Activity
121 Questionnaire short form [22]. Biomarkers including high sensitivity C-reactive protein (hsCRP),
122 interleukin 6 (IL-6), interleukin 10 (IL-10), tumor necrosis factor (TNF), soluble TNF receptor 1
123 (sTNFR-1), soluble TNF receptor 2 (sTNFR-2), soluble CD14 (sCD14), and insulin-like growth
124 factor binding protein 3 (IGFB-3) were measured on baseline plasma samples using
125 commercially available enzyme-linked immunosorbent assays as previously reported [23].

126 *Statistical Analysis:* Study data were collected and managed using REDCap. A deidentified
127 dataset was generated and provided for this secondary analysis. AHRR at baseline was compared
128 using t-tests for unadjusted analyses and linear regression with HIV as the primary predictor of
129 interest and including age, sex, and body mass index as pre-specified covariates with other
130 covariates of interest includes in secondary analyses. Chi squared tests were used to compare the
131 proportion with and without chronotropic incompetence by HIV status. Factors associated with
132 chronotropic incompetence including HIV specific factors were reported by univariate analysis
133 (Fisher's exact/chi-squared test for binary, t-test or Pearson correlation coefficients for AHRR).
134 We subsequently included all of the cardiovascular risk factors in a linear regression model. For
135 the longitudinal analyses, we used linear mixed effects models with random slopes and intercepts
136 by participant, an independent covariance structure, and a clustered sandwich estimator. We
137 considered $p < 0.05$ to be significant for the primary outcomes and did not adjust for multiple
138 comparisons. Given the small sample size, we only assessed for interactions with the physical
139 activity and body composition variables and HIV status. Analyses were performed using STATA
140 17.0.

141 *Approval:* The original study was approved by the Colorado Multiple Institution Review Board
142 and written informed consent was obtained.

143 **Results**

144 At baseline, 32 PWH and 37 controls completed CPET; 28 PWH and 31 controls
145 completed 12 weeks of moderate-intensity exercise training and 27 PWH and 29 controls
146 completed the full 24-week trial [18]. Participants had a median age of 56 years and were
147 predominantly male (Table 1). Mean BMI was 28 kg/m². Among PWH, median duration with
148 diagnosed HIV was 21 years with a median treatment duration with antiretroviral therapy of 17
149 years.

150 *Chronotropy Prior to Exercise Training*

151 Baseline CPET results are presented in Table 2. At baseline, mean AHRR was 91%
152 (95%CI 85-96) among PWH compared to 101% among controls (95%CI 95-108; unadjusted
153 difference 10.5%, 95%CI 2.5-19.7; p=0.02; Figure 1). With adjustment for age, sex, and body
154 mass index, AHRR was 13% lower among PWH (95% CI 3.8-22.4; p=0.007). In a sensitivity
155 analysis excluding those with coronary artery disease or on chronotropic medications at baseline
156 (n=4), the magnitude of the association remained unchanged (13% lower among PWH; 95%CI
157 5-21; p=0.002). Among PWH, 28% had chronotropic incompetence compared to 11% of
158 controls (OR 3.2; 95%CI 0.89-11.8; p=0.08).

159 At baseline, AHRR was correlated with peak VO₂ ($\rho=0.45$, p=0.0001; Figure 2).
160 Chronotropic incompetence at baseline was associated with 5.3 ml/kg/min lower peak VO₂ (95%
161 CI -8.1 to -2.5; p<0.001) adjusted for age, sex, and body mass index. Each 10% decrease in

162 AHRR was associated with a 1.4 ml/kg/min reduction in peak VO_2 (95% CI -2.0 to -0.8;
163 $p < 0.001$).

164 *Factors Associated with Baseline Chronotropy*

165 In exploratory analyses, we found that cardiovascular risk factors at baseline were
166 associated with chronotropic incompetence. In univariate analysis, hypertension, coronary artery
167 disease, chronotropic medications, current smoking, but not diabetes or dyslipidemia, were
168 correlated with lower AHRR. As shown in Table 3, in a model including age, sex, body mass
169 index, hypertension, dyslipidemia, diabetes, current smoking, coronary artery disease, and use of
170 chronotropic medications, coronary artery disease was associated with 29% lower AHRR
171 (95%CI 10-47; $p = 0.004$) and chronotropic medications with 25% lower AHRR (95% CI 2-48;
172 $p = 0.03$). HIV remained significantly associated with chronotropy even accounting for coronary
173 artery disease and chronotropic medications (9% lower AHRR; 95% CI 1-17; $p = 0.03$). Other
174 factors are listed in Table 3.

175 Some body composition parameters were modestly correlated with chronotropy. In
176 univariate analysis, body mass index ($\rho = -0.27$ $p = 0.03$) and visceral adipose tissue (VAT) area
177 ($\rho = -0.26$, $p = 0.03$) were negatively correlated with AHRR, with adjusted estimates reported in
178 Table 3. Measures of lean body mass were not correlated with AHRR. There were negligible
179 changes in estimates for the effect of HIV in models including DEXA-derived body composition
180 variables individually or all together compared to models with BMI only or for VAT area
181 substituted for BMI. As BMI and VAT are co-linear ($\rho = 0.79$), both were associated with AHRR
182 only when singularly included in the model (Table 3), with no interaction with BMI or VAT by
183 HIV status ($p_{\text{interaction}} = 0.80$ and 0.44, respectively).

184 In contrast, among this sedentary population, baseline self-reported physical activity (in
185 MET-hours per week) was not correlated with AHRR ($\rho=-0.16$, $p=0.21$). In an adjusted model
186 including age, sex, body mass index and HIV, baseline physical activity was not associated with
187 AHRR ($\beta=-0.04$ per MET-hour per week; 95%CI -0.09-0.02; $p=0.20$) with no interaction by HIV
188 status ($p_{\text{interaction}}=0.87$).

189 In univariate analysis restricted to PWH, current CD4 count and self-reported nadir CD4
190 were negatively correlated with AHRR ($\rho=-0.22$, $p=0.04$ and $\rho=-0.23$, $p=0.04$, respectively).
191 Longer ART duration was positively correlated with higher (better) AHRR ($\rho=0.22$, $p=0.046$). In
192 models including age, sex, body mass index, and HIV specific variables either individually or all
193 together, there were no statistically significant factors identified.

194 Among the inflammatory markers measured, only IL-6 was associated with chronotropy.
195 Baseline IL-6 was associated with a 7% lower AHRR per doubling (95% CI -13 to -1; $p=0.02$)
196 accounting for age, sex, and BMI, which was attenuated when additionally accounting for HIV
197 (5%; 95% CI -11-0.3; $p=0.06$). Other inflammatory markers including hsCRP, TNF, IL-10,
198 sTNFR-1, sTNFR-2, sCD14, or IGFB-3 were not associated with chronotropy.

199 *Chronotropic Response to Exercise Training varies by HIV Status*

200 At week 12, AHRR normalized among PWH (+8%, 95% CI 4-11; $p<0.001$) compared to
201 0.1% increase among controls (95% CI -4 to 4; $p=0.95$; $p_{\text{interaction}}=0.004$; Figure 1). Mean AHRR
202 at 12 weeks was 98% (95% CI 92-104) among PWH compared to 101% (95% CI 94-109) among
203 controls ($p=0.51$). The improvement in chronotropy among PWH was sustained at week 24
204 (+5%, 95%CI 1-9; $p=0.008$). At week 24, mean AHRR was 97% (95%CI 91-103) among PWH
205 and 104% (95%CI 98-110) among controls ($p=0.09$). Randomized assignment to the high

206 intensity exercise intervention during weeks 12-24 was not associated with a difference in
207 AHRR from 12 to 24 weeks compared to moderate intensity ($p=0.84$).

208 After 12 weeks of moderate intensity exercise 15% of PWH and 13% of controls met the
209 definition for chronotropic incompetence ($p=1.00$). Similarly, after 24 weeks of exercise, 15% of
210 PWH and 10% of controls, respectively, met the definition for CI ($p=0.70$). There was no
211 difference at 24 weeks by intensity arm ($p=0.39$).

212 Each 10% increase in AHRR from baseline was associated with a 1.2 ml/kg/min increase
213 in peak VO_2 at 12 weeks (95% CI 0.5-1.8; $p=0.001$). Accounting for change in AHRR, the
214 greater benefit of exercise observed among PWH at 12 weeks (peak VO_2 increased +1.5
215 ml/kg/min more than controls, 95%CI 0.1 to 2.9, $p=0.04$) was attenuated (0.4 ml/kg/min, 95%CI
216 -0.9 to 1.8; $p=0.53$).

217 **Discussion**

218 Consistent with the existing literature, we found that chronotropic incompetence is a
219 mechanism of reduced exercise capacity with a high prevalence among PWH. We expand upon
220 the existing literature by focusing on a population of older sedentary adults with additional
221 measures of body composition and physical activity. Adjusting for these baseline characteristics,
222 our findings suggest that chronotropy among older sedentary PWH is not largely driven by the
223 amount of baseline physical activity or body composition—that is, chronotropic incompetence is
224 not likely to be simply a result of deconditioning. Importantly, we also provide the first evidence
225 that chronotropic incompetence is modifiable in this patient population and that exercise training
226 may be an effective intervention.

227 Research on chronotropic incompetence has only included cross-sectional assessments of
228 chronotropy, with the exception of clinical trials in the setting of heart failure. To our knowledge,
229 this is the first study to demonstrate that chronotropic incompetence is modifiable among
230 patients without heart failure. Consistent with the literature in heart failure, this study provides
231 evidence that exercise training improves chronotropy. A randomized clinical trial including
232 individuals with heart failure with a reduced ejection fraction found that exercise training
233 improved chronotropy and exercise capacity in the group assigned a supervised exercise training
234 program compared to the control group [16]. There are no published studies testing exercise
235 training or any other interventions for chronotropic incompetence among people without heart
236 failure. Exercise training may improve chronotropy by decreasing baseline adrenergic activation
237 seen in heart failure [16]. This leads to improved β -receptor responsiveness such that there is a
238 greater increase in heart rate for a similar change in plasma catecholamines released during
239 exercise. Another hypothesis is that exercise training might reduce inflammation. However, in
240 this study, changes in inflammation were variable and did not consistently decrease [23].
241 Another hypothesis is that exercise improves mitochondrial efficiency and vascular function,
242 allowing individuals to reach a higher maximal heart rate even if there is no change in the
243 underlying β -receptor response.

244 Why the prevalence of chronotropic incompetence is higher among PWH is unclear. One
245 interesting hypothesis-generating finding is that longer duration of ART is associated with better
246 chronotropy; in earlier eras of diagnosis, lower nadir CD4 counts resulted in earlier treatment
247 with ART. A likely contributor to chronotropic incompetence among people with successfully
248 treated HIV may be increased chronic inflammation, which is associated with chronotropic
249 incompetence in this study and prior work. Besides inflammation, prior papers have not

250 identified HIV-specific factors that are clearly linked to chronotropic incompetence [8, 24].
251 Among people without heart failure, decreased β -receptor responsiveness is a likely mechanism
252 of chronotropic incompetence [25, 26]. Chronic adrenergic activation from chronic inflammation
253 that is present among PWH, even those who are treated with ART and virally suppressed, may
254 be a major factor driving both chronotropic incompetence and heart failure with preserved
255 ejection fraction among PWH [27-29]. Although a number of inflammatory markers were
256 increased among PWH in this study, only IL-6 was inversely associated with chronotropy among
257 people with and without HIV, consistent with prior reports [24, 30]. Ultimately, chronic
258 inflammation may lead to cardiac interstitial fibrosis which is increased among PWH [31] but
259 not yet strongly linked to chronotropic incompetence.

260 Our finding that cardiometabolic risk factors and smoking are associated with
261 chronotropic incompetence is consistent with prior work among people without HIV [30, 32-36].
262 Although PWH have a higher burden of cardiovascular risk factors, these do not fully explain
263 differences in baseline chronotropic incompetence by HIV serostatus. Cardiometabolic risk
264 factors lead to coronary endothelial and microvascular dysfunction that may cause chronotropic
265 incompetence, or these factors may lead to premature cessation of exercise prior to reaching peak
266 heart rate. This is an important distinction because if it is truly causal then improving
267 chronotropy may result in lower cardiovascular risk; if it is simply a marker of premature
268 cessation of exercise (i.e. coronary endothelial or mitochondrial dysfunction), then chronotropic
269 incompetence may simply be a surrogate marker for subclinical cardiovascular disease. In the
270 general population, there are strong associations between chronotropic incompetence at baseline
271 and subsequent incident cardiovascular disease [10] including myocardial infarction [11],
272 ischemic stroke [12], and mortality [10, 11, 13, 14]. This has not been studied prospectively

273 among PWH, and whether improvement in chronotropy is associated with lower risk of
274 cardiovascular events is unknown.

275 Several limitations of this secondary analysis should be noted. This was of an already
276 completed clinical trial not designed to test the baseline prevalence of chronotropic
277 incompetence among PWH or the effect of exercise training on chronotropy, which has distinct
278 advantages and disadvantages. A small number of individuals had chronotropic incompetence.
279 Individuals with known coronary artery disease and those taking chronotropic medications were
280 included in the trial. For this secondary analysis, we chose not to exclude those on chronotropic
281 medications but rather to use the lower threshold that has been previously published. A higher
282 than expected proportion of participants had a low respiratory exchange ratio indicating a
283 submaximal or VO_2 peak instead of VO_2max , likely due to deconditioning in this sedentary
284 population. However, the foundational papers suggest that the adjusted heart rate reserve using
285 the peak heart rate can still be used in submaximal tests because it is a ratio of the percentage of
286 the heart rate reserve used to the metabolic reserve used and not affected by the exercise
287 protocol, stage of exercise, or functional status [10, 13, 37].

288 In summary, we have found that chronotropic incompetence may contribute to reduced
289 exercise capacity among PWH and improves with exercise training. Questions remain as to why
290 PWH have a higher prevalence of chronotropic incompetence than the general population, and
291 whether chronotropic incompetence is associated with subsequent cardiovascular events or
292 subclinical cardiovascular disease among PWH. Taken in context of the numerous other benefits
293 of exercise, we suggest that exercise can be recommended to individuals with chronotropic
294 incompetence. Further studies are needed to explore the mechanisms for these improvements and
295 the intensity of exercise training needed to modify the effect on chronotropy among PWH.

296 References

- 297 1. Feinstein MJ, Hsue PY, Benjamin LA, et al. Characteristics, Prevention, and Management of
298 Cardiovascular Disease in People Living With HIV: A Scientific Statement From the American
299 Heart Association. *Circulation* **2019**; 140:e98-e124.
- 300 2. Pothoff G, Wassermann K, Ostmann H. Impairment of exercise capacity in various groups of
301 HIV-infected patients. *Respiration* **1994**; 61:80-5.
- 302 3. Oursler KK, Sorkin JD, Smith BA, Katzell LI. Reduced aerobic capacity and physical
303 functioning in older HIV-infected men. *AIDS Res Hum Retroviruses* **2006**; 22:1113-21.
- 304 4. Duong M, Dumas JP, Buisson M, et al. Limitation of exercise capacity in nucleoside-treated
305 HIV-infected patients with hyperlactataemia. *HIV Med* **2007**; 8:105-11.
- 306 5. Gomes Neto M, Conceicao CS, Ogalha C, Brites C. Aerobic capacity and health-related
307 quality of life in adults HIV-infected patients with and without lipodystrophy. *Braz J Infect Dis*
308 **2016**; 20:76-80.
- 309 6. de Lima LRA, Silva DAS, da Silva KS, Pelegriani A, de Carlos Back I, Petroski EL. Aerobic
310 Fitness and Moderate to Vigorous Physical Activity in Children and Adolescents Living with
311 HIV. *Pediatr Exerc Sci* **2017**; 29:377-87.
- 312 7. Orton PM, Sokhela DG, Nokes KM, Perazzo JD, Webel AR. Factors related to functional
313 exercise capacity amongst people with HIV in Durban, South Africa. *Health SA* **2021**; 26:1532.
- 314 8. De Lorenzo A, Meirelles V, Vilela F, Souza FC. Use of the exercise treadmill test for the
315 assessment of cardiac risk markers in adults infected with HIV. *J Int Assoc Provid AIDS Care*
316 **2013**; 12:110-6.
- 317 9. Durstenfeld MS, Peluso MJ, Spinelli MA, et al. Association of SARS-CoV-2 infection and
318 Cardiopulmonary Long COVID with Exercise Capacity and Chronotropic Incompetence among
319 People with HIV. *J Am Heart Assoc* **2023**.

- 320 10. Lauer MS, Okin PM, Larson MG, Evans JC, Levy D. Impaired heart rate response to graded
321 exercise. Prognostic implications of chronotropic incompetence in the Framingham Heart Study.
322 *Circulation* **1996**; 93:1520-6.
- 323 11. Elhendy A, Mahoney DW, Khandheria BK, Burger K, Pellikka PA. Prognostic significance
324 of impairment of heart rate response to exercise: impact of left ventricular function and
325 myocardial ischemia. *J Am Coll Cardiol* **2003**; 42:823-30.
- 326 12. Jae SY, Heffernan K, Kurl S, et al. Chronotropic Response to Exercise Testing and the Risk
327 of Stroke. *Am J Cardiol* **2021**; 143:46-50.
- 328 13. Lauer MS, Francis GS, Okin PM, Pashkow FJ, Snader CE, Marwick TH. Impaired
329 chronotropic response to exercise stress testing as a predictor of mortality. *JAMA* **1999**;
330 281:524-9.
- 331 14. Gulati M, Shaw LJ, Thisted RA, Black HR, Bairey Merz CN, Arnsdorf MF. Heart rate
332 response to exercise stress testing in asymptomatic women: the st. James women take heart
333 project. *Circulation* **2010**; 122:130-7.
- 334 15. Reddy YNV, Koepp KE, Carter R, et al. Rate-Adaptive Atrial Pacing for Heart Failure With
335 Preserved Ejection Fraction: The RAPID-HF Randomized Clinical Trial. *JAMA* **2023**; 329:801-
336 9.
- 337 16. Keteyian SJ, Brawner CA, Schairer JR, et al. Effects of exercise training on chronotropic
338 incompetence in patients with heart failure. *Am Heart J* **1999**; 138:233-40.
- 339 17. Coman J, Freedman R, Koplan BA, et al. A blended sensor restores chronotropic response
340 more favorably than an accelerometer alone in pacemaker patients: the LIFE study results.
341 *Pacing Clin Electrophysiol* **2008**; 31:1433-42.

- 342 18. Erlandson KM, MaWhinney S, Wilson M, et al. Physical function improvements with
343 moderate or high-intensity exercise among older adults with or without HIV infection. *AIDS*
344 **2018**; 32:2317-26.
- 345 19. Khan MN, Pothier CE, Lauer MS. Chronotropic incompetence as a predictor of death among
346 patients with normal electrograms taking beta blockers (metoprolol or atenolol). *Am J Cardiol*
347 **2005**; 96:1328-33.
- 348 20. Dobre D, Zannad F, Keteyian SJ, et al. Association between resting heart rate, chronotropic
349 index, and long-term outcomes in patients with heart failure receiving β -blocker therapy: data
350 from the HF-ACTION trial. *Eur Heart J* **2013**; 34:2271-80.
- 351 21. Jankowski CM, Mawhinney S, Wilson MP, et al. Body Composition Changes in Response to
352 Moderate- or High-Intensity Exercise Among Older Adults With or Without HIV Infection.
353 *J Acq Imm Def* **2020**; 85:340-5.
- 354 22. Craig CL, Marshall AL, Sjöström M, et al. International physical activity questionnaire: 12-
355 country reliability and validity. *Med Sci Sports Exerc* **2003**; 35:1381-95.
- 356 23. Erlandson KM, Wilson MP, MaWhinney S, et al. The Impact of Moderate or High-Intensity
357 Combined Exercise on Systemic Inflammation Among Older Persons With and Without HIV. *J*
358 *Infect Dis* **2021**; 223:1161-70.
- 359 24. Durstenfeld MS PM, Spinelli MA, Li D, Sander E, Swaminathan S, Arechiga VM, Hoh R,
360 Aras MA, Long CS, Deeks SG, Hsue PY. EXERCISE CAPACITY IS REDUCED IN HIV
361 INDEPENDENT OF SARS-COV-2 INFECTION In: CROI 2023. (Seattle, WA).
- 362 25. Kawasaki T, Kaimoto S, Sakatani T, et al. Chronotropic incompetence and autonomic
363 dysfunction in patients without structural heart disease. *Europace* **2010**; 12:561-6.

- 364 26. Brubaker PH, Kitzman DW. Chronotropic incompetence: causes, consequences, and
365 management. *Circulation* **2011**; 123:1010-20.
- 366 27. Hsue PY, Hunt PW, Ho JE, et al. Impact of HIV infection on diastolic function and left
367 ventricular mass. *Circ Heart Fail* **2010**; 3:132-9.
- 368 28. Sinha A, Ma Y, Scherzer R, et al. Role of T-Cell Dysfunction, Inflammation, and
369 Coagulation in Microvascular Disease in HIV. *J Am Heart Assoc* **2016**; 5.
- 370 29. Butler J, Greene SJ, Shah SH, et al. Diastolic Dysfunction in Patients With Human
371 Immunodeficiency Virus Receiving Antiretroviral Therapy: Results From the CHART Study. *J*
372 *Card Fail* **2020**; 26:371-80.
- 373 30. Durstenfeld MS, Peluso MJ, Kaveti P, et al. Reduced Exercise Capacity, Chronotropic
374 Incompetence, and Early Systemic Inflammation in Cardiopulmonary Phenotype Long
375 Coronavirus Disease 2019. *J Infect Dis* **2023**; 228:542-54.
- 376 31. Tseng ZH, Moffatt E, Kim A, et al. Sudden Cardiac Death and Myocardial Fibrosis,
377 Determined by Autopsy, in Persons with HIV. *N Engl J Med* **2021**; 384:2306-16.
- 378 32. Hansen D, Dendale P. Modifiable predictors of chronotropic incompetence in male patients
379 with type 2 diabetes. *J Cardiopulm Rehabil Prev* **2014**; 34:202-7.
- 380 33. Franssen WMA, Keytsman C, Marinus N, et al. Chronotropic incompetence is more frequent
381 in obese adolescents and relates to systemic inflammation and exercise intolerance. *J Sport*
382 *Health Sci* **2023**; 12:194-201.
- 383 34. Huang PH, Leu HB, Chen JW, et al. Comparison of endothelial vasodilator function,
384 inflammatory markers, and N-terminal pro-brain natriuretic peptide in patients with or without
385 chronotropic incompetence to exercise test. *Heart* **2006**; 92:609-14.

- 386 35. Lauer MS, Pashkow FJ, Larson MG, Levy D. Association of cigarette smoking with
387 chronotropic incompetence and prognosis in the Framingham Heart Study. *Circulation* **1997**;
388 96:897-903.
- 389 36. Srivastava R, Blackstone EH, Lauer MS. Association of smoking with abnormal exercise
390 heart rate responses and long-term prognosis in a healthy, population-based cohort. *Am J Med*
391 **2000**; 109:20-6.
- 392 37. Wilkoff BL, Miller RE. Exercise testing for chronotropic assessment. *Cardiology clinics*
393 **1992**; 10:705-17.
- 394
- 395

396 Table 1. Participant Characteristics by HIV Status

	HIV (n=32)	No HIV (n=37)	p value
Age	55.5 (52, 60.5)	58 (53, 64)	0.34
Female	4 (13%)	2 (5%)	0.41
Male	28 (88%)	35 (95%)	0.54
Race			0.09
Black	9 (28%)	3 (8%)	
White	20 (63%)	31 (84%)	
More than 1 race or other	3 (9%)	3 (8%)	
Hispanic/Latino	4 (13%)	4 (11%)	1.00
Medical History			
Hypertension	16 (50%)	25 (68%)	0.14
Diabetes	2 (6%)	4 (11%)	0.50
Dyslipidemia	14 (44%)	22 (59%)	0.19
Depression	17 (53%)	9 (24%)	0.01
Coronary Artery Disease*	1 (3%)	2 (5%)	1.00
Veterans Aging Cohort Study Index, % \geq 20 points	18 (56%)	9 (24%)	0.01
Tobacco Use			0.07
- Never	11 (34%)	23 (62%)	
- Smoked <10 years and quit	4 (13%)	5 (14%)	
- Smoked >10 years and quit	12 (38%)	5 (14%)	
- Current Smoker	5 (16%)	4 (11%)	
Marijuana Use (in last year)	19 (59%)	5 (14%)	<0.001
Alcohol Use			0.21
None	10 (31%)	6 (16%)	
2x/week or less	19 (59%)	23 (62%)	
Daily	3 (9%)	8 (22%)	
Body Composition			
Body Mass Index, kg/m ²	25.0 (23.8, 28.4)	28.3 (26, 32.3)	0.01
Total Lean Mass, kg	58.7 (51.6, 64.2)	59.7 (55.8, 69.1)	0.06
Total Fat Mass, kg	20.0 (15.3, 24.0)	26.3 (22.5, 33.5)	0.005
Visceral Adipose Tissue Area, cm ²	171 (133, 227)	219 (173, 261)	0.09
Appendicular Lean Mass, kg/m ²	25.9 (22.6, 29.5)	26.3 (25.1, 31.4)	0.07
Percent Fat	29 \pm 7	33 \pm 7	0.02
Physical Activity (IPAQ)			
Days/Week >10 minutes of Vigorous Activity	0 (0, 2)	0 (0, 1)	0.35
Days/Week >10 minutes Moderate Activity	1 (0, 2)	1 (0, 2)	0.19
Days/Week >10 minutes Walking	3 (0, 7)	5 (1, 7)	0.69
MET minutes per week	863 (56, 2097)	1215 (264, 2856)	0.77
Awake Hours Sitting per Day	6 (4, 9)	6 (4,9)	0.61
Short Physical Performance Battery			0.14

Score			
Score \geq 12 (no impairment)	21 (66%)	31 (84%)	
Score<12	11 (34%)	6 (16%)	
Current Statin Use	13 (41%)	15 (41%)	1.00
Integrase inhibitor-containing regimen	21 (66)		
Protease inhibitor-containing regimen	13 (41)		
NNRTI-containing regimen	9 (28)		
Any prior zidovudine treatment	12 (38)		
Any prior stavudine treatment	14 (44)		
Current CD4 ⁺ cell count	591 (449, 836)		
Years since HIV diagnosis	21 (16, 28)		
Estimated years of continuous ART	17 (6, 19)		
Baseline Inflammatory Markers			
C-Reactive Protein	2.0 (1.0, 3.8)	1.1 (0.7, 2.4)	0.05*
IL-6	2.1 (1.4, 2.6)	1.8 (1.4, 2.6)	0.58*
IL-10	4.4 (3.2, 6.0)	4.1 (3.0, 7.9)	0.95*
TNF-a	1.3 (1.1, 1.7)	1.0 (0.8, 1.3)	0.01*
sTNFR1	1147 (937, 1488)	1062 (904, 1196)	0.18*
sTNFR2	2769 (2078, 4111)	2289 (1863, 2865)	0.05*
sCD14	1779 (1595, 1959)	1596 (1309, 1691)	0.004*
IGFBP-3	1704 (1102, 2231)	1931 (1552, 2297)	0.13*

397 *Wilcoxon rank sum

398 Table Legend: Coronary artery disease was defined as prior myocardial infarction, bypass
 399 surgery, angioplasty, or stent. IL=interleukin. TNFR=tumor necrosis factor receptor. CD=Cluster
 400 of Differentiation. IGFBP=insulin like growth factor binding protein.

401

402 Table 2. Baseline Cardiopulmonary Exercise Testing Results by HIV

	PWH (n=32)	Controls (n=37)	P value
Duration of Exercise	10.1±3.2 minutes	9.9±2.6 minutes	0.78
Respiratory Exchange Ratio ^{a, b}	1.09±0.07	1.09±0.6	0.71
Peak VO ₂ (ml/kg/min) ^b	25.9±5.7	27.2±6.1	0.35
Resting (standing) heart rate	75±10	79±10	0.09
Maximum heart rate	155±13	163±17	0.08
Age-Predicted Maximum heart rate, % (220-age)	95±8	100±10	0.02
Adjusted heart rate reserve, %	88±21	101±20	<0.01
Chronotropic Incompetence, n (%)	9 (28%)	4 (11%)	0.07

403 Table Legend: Cardiopulmonary exercise testing results by HIV status. Continuous results are
404 reported as mean ± standard deviation. P values are from t-tests for continuous outcomes and chi-
405 squared test for categorical variables.

406 Footnotes: a: 3 baseline studies among PWH were submaximal. b. One baseline study was
407 missing gas exchange information.

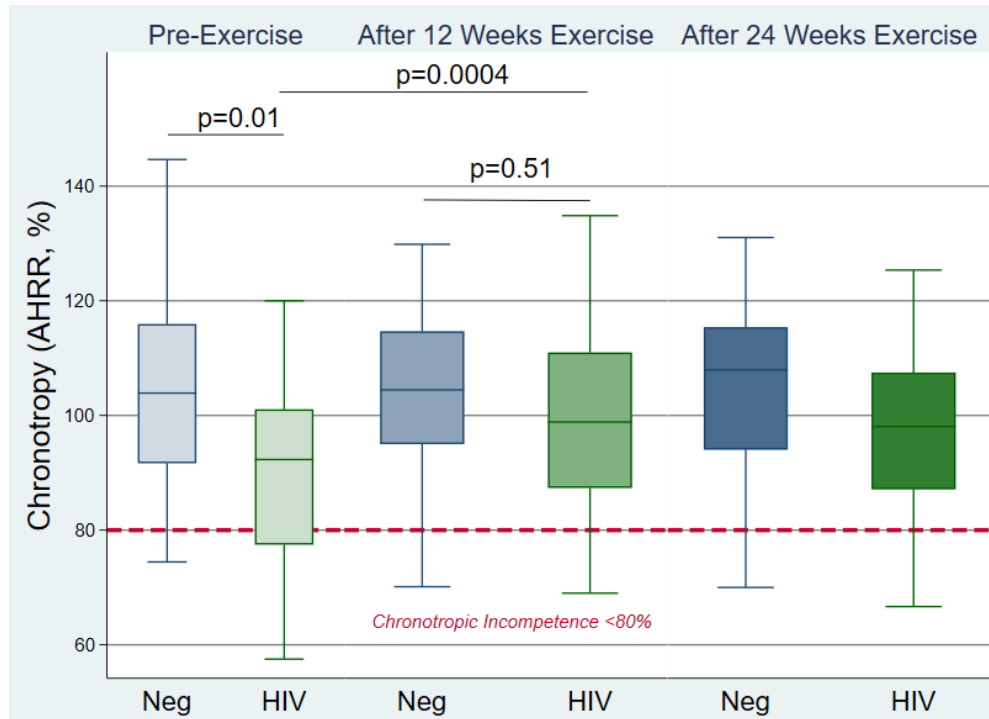
408

409 Table 3. Factors Associated with Chronotropic Incompetence

	Adjusted Difference in AHRR	95% Confidence Interval	P value
HIV ^a	-13%	-22, -4	<0.01
Hypertension ^b	-10%	-18, -1	0.02
Dyslipidemia ^b	+7%	-2, 15	0.06
Diabetes ^b	+4%	-10, 17	0.93
Smoking ^b	-16%	-27, -6	0.03
Coronary Artery Disease ^b	-29%	-47, -10	<0.01
Chronotropic Medication Prescribed ^b	-25%	-48, -2	0.03
Body Mass Index ^c	-17% per standard deviation increase	-11, -2	0.03
Visceral Adipose Tissue Area ^c	-6.6% per standard deviation increase	-11, -2	<0.01
Visceral Adipose Tissue Area Independent of BMI ^d	-3.9% per standard deviation increase	-11.6, 3.8	0.14
Baseline Physical Activity (MET-Hours per week) ^c	0.04 per MET-hour/week	-0.09, 0.02	0.49
IL-6 ^c	-6% per doubling	-10, -1	0.02

410 Footnotes: a. Adjusted for Age, Sex, Body Mass Index. b. Adjusted for Age, Sex, Body Mass
411 Index, hypertension, dyslipidemia, diabetes, smoking, coronary artery disease, and chronotropic
412 medications prescribed. C. Adjusted for Age, Sex, and HIV. D. Adjusted for Age, Sex, Body
413 Mass Index, and HIV.

414 Figure 1. Chronotropy by HIV Status and Time

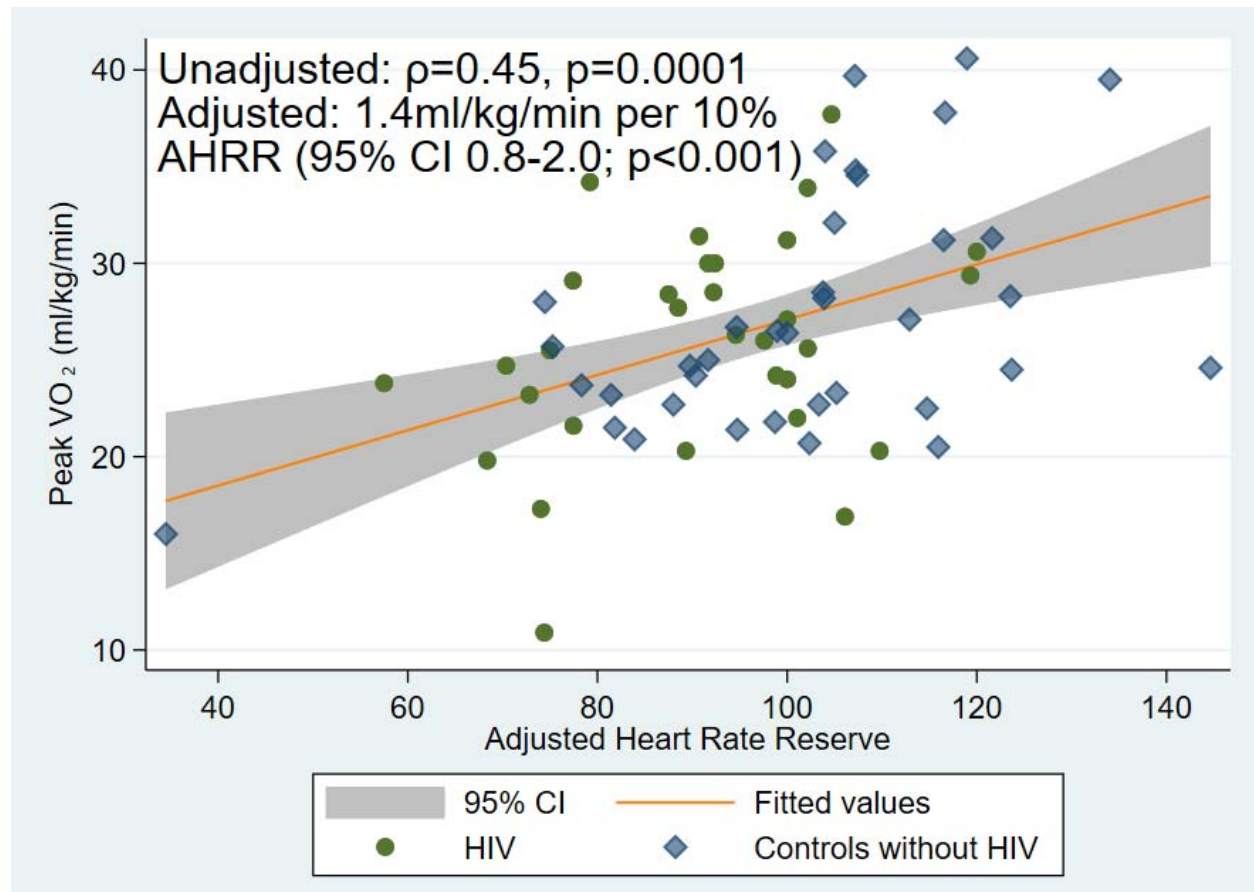


415

416 Figure Legend: Boxplots (median, interquartile range) for adjusted heart rate reserve among
417 those with and without HIV at baseline, after 12 weeks, and after 24 weeks of exercise. Dashed
418 line represented the definition for chronotropic incompetence among people not on chronotropic
419 medications (<80%).

420

421 Figure 2. Association between Chronotropy and Cardiorespiratory Fitness



422

423 Figure 2 Legend: Scatter plots and linear fit of the association between adjusted heart rate
424 reserve (x-axis) and peak VO₂ in ml/kg/min at baseline. Adjusted for age, sex, and body mass
425 index, each 10% increase in AHRR was associated with a 1.4 ml/kg/min higher peak VO₂.