

1     **A protocol for evaluating digital technology for monitoring sleep**  
2             **and circadian rhythms in older people and people living with**  
3                     **dementia in the community**

4  
5     Ciro della Monica<sup>1,2\*</sup>, Kiran K. G. Ravindran<sup>1,2</sup>, Giuseppe Atzori<sup>1,2</sup>, Damion Lambert <sup>1,2</sup>, Thalia  
6     Rodriguez-Garcia<sup>1,2,3</sup>, Sara Mahvash-Mohammadi<sup>2,4</sup>, Ullrich Bartsch<sup>1,2</sup>, Anne C. Skeldon<sup>2,3</sup>,  
7     Kevin Wells<sup>2,4</sup>, Adam Hampshire<sup>5</sup>, Ramin Nilforooshan<sup>2,6</sup>, Hana Hassanin<sup>2,7,8</sup>, the UK  
8     Dementia Research Institute Care Research & Technology Research Group<sup>2</sup>, Victoria L.  
9     Revell<sup>1,2</sup>, Derk-Jan Dijk<sup>1,2</sup>

10

11     <sup>1</sup>Surrey Sleep Research Centre, University of Surrey, Guildford, UK

12     <sup>2</sup>UK Dementia Research Institute Care Research & Technology Centre (CR&T) at Imperial  
13     College London and the University of Surrey

14     <sup>3</sup>School of Mathematics & Physics, University of Surrey, Guildford, UK

15     <sup>4</sup>Centre for Vision, Speech and Signal Processing, University of Surrey, Guildford, UK

16     <sup>5</sup>Department of Brain Sciences, Imperial College, London, UK

17     <sup>6</sup>Surrey and Borders Partnership NHS Foundation Trust Surrey, Chertsey, UK

18     <sup>7</sup>Surrey Clinical Research Facility, University of Surrey, Guildford, UK

19     <sup>8</sup>NIHR Royal Surrey CRF, Guildford, UK.

20

21     \*Corresponding Author:

22     Email: [c.dellamonica@surrey.ac.uk](mailto:c.dellamonica@surrey.ac.uk) (CdM)

23     NOTE: This preprint reports new research that has not been certified by peer review and should not be used to guide clinical practice.

## 24 **Abstract**

25 Sleep and circadian rhythm disturbance are predictors of poor physical and mental health,  
26 including dementia. Long-term monitoring of sleep and circadian rhythms in people living in  
27 the community may have great potential for early diagnosis, monitoring of disease  
28 progression and assessing the effectiveness of interventions in dementia and other health  
29 conditions. Many novel digital technology-based approaches for monitoring sleep and  
30 circadian rhythms, aimed at both the consumer and research markets, have recently  
31 become available. However, before such technology can be implemented at scale, its  
32 performance and acceptability need to be evaluated and compared to established gold  
33 standard methodology in relevant populations.

34 Here we describe a protocol for the evaluation of novel sleep and circadian technology in  
35 cognitively intact older adults, some of whom have stable comorbidities, and in people living  
36 with dementia (PLWD). In this protocol a range of technologies is tested simultaneously first  
37 at-home during a one- to two-week period and subsequently in a clinical research facility in  
38 which gold standard methodology for assessing sleep and circadian physiology is  
39 implemented.

40 We emphasize the importance of assessing both nocturnal and diurnal sleep (naps), valid  
41 markers of circadian physiology, and that evaluation of sleep and circadian technology is  
42 best achieved in protocols in which sleep is mildly disturbed and in populations and settings  
43 that are relevant to the targeted use-case. We provide details on the design,  
44 implementation, and challenges of this sleep and circadian technology evaluation protocol  
45 along with examples of the datasets that have been generated in both cognitively intact

46 older adults and PLWD. We place our protocol in the context of existing literature and  
47 highlight the benefits that our methodology has over previous approaches.

48

## 49 **Author Summary**

50 Sleep and circadian (24-hour) rhythms are frequently disrupted in various physical and  
51 mental health conditions including dementia. These disturbances may merely be an  
52 outcome of the disease process or be drivers of disease progression. Either way, the ability  
53 to monitor sleep and circadian rhythms long-term and at-home could be highly beneficial  
54 for monitoring health status, early identification of decline, and implementation of  
55 interventions as well as monitoring the effectiveness of interventions. A number of new  
56 digital health technologies are now available that could allow non-invasive, non-intrusive,  
57 long-term monitoring of sleep and circadian rhythms at home. However, few of these have  
58 been evaluated against gold-standard measures in a relevant population. Here we describe  
59 our approach to simultaneously evaluating multiple types of sleep and circadian  
60 technologies against standard methodology, both at-home and in the laboratory, in a group  
61 of older adults with and without dementia. We discuss the feasibility of this protocol,  
62 provide examples of the data that were obtained, the data analyses and visualisations that  
63 can be applied, and explain the benefits of our approach.

64

## 65 **Introduction**

### 66 **The need for technology to monitor sleep and circadian rhythms longitudinally**

67 Sleep and the circadian system are important contributors to well-being and both physical  
68 and mental health [1-4]. Disruptions to sleep or the circadian clock in ill health may be a

69 predictor of and/or contributor to disease progression as well having a negative impact on  
70 quality of life. Much of our knowledge in this area is based on self-report, cross-sectional  
71 studies or short-term laboratory studies. The capacity to unobtrusively monitor sleep-wake  
72 cycles, circadian rhythms, and other health indicators over long periods of time at home  
73 offers opportunities: a) to monitor disease progression and associated clinical outcomes, b)  
74 for early detection of decline and implementation of appropriate action, c) to increase  
75 understanding of the relationship between sleep/circadian physiology and clinical  
76 symptoms/intervention/recovery/response. In addition, longitudinal monitoring of sleep  
77 and the circadian system within an individual may facilitate the development of  
78 personalised interventions to improve clinical symptoms and quality of life.

79         The timing, duration and quality of sleep is regulated by an interaction of two well-  
80 characterised biological processes: circadian rhythmicity, and a sleep-wake dependent  
81 process which is often referred to as sleep homeostasis [5-8]. The sleep homeostat  
82 monitors time awake whereas the circadian system drives 24-hour rhythms in nearly all  
83 aspects of our physiology and behaviour. The master circadian clock, the suprachiasmatic  
84 nuclei (SCN) of the hypothalamus is synchronised to the 24-hour day by environmental light  
85 (e.g.,[3, 9]); in addition, environmental light can also modify our levels of alertness, mood,  
86 and performance [10].

87         People living with dementia (PLWD) and their caregivers are examples of populations  
88 that may benefit from monitoring of sleep and circadian rhythms over long periods of time.  
89 Disturbances of sleep and circadian rhythms are highly prevalent in dementia and include  
90 night-time awakening and wandering, long naps during the daytime, and early or late sleep  
91 timing [11-14]. Sleep timing disturbances may vary across various dementias such as fronto-  
92 temporal dementia (FTD) and Alzheimer’s disease [15]. In addition, sleep disorders are

93 prevalent in dementia, particularly obstructive sleep apnoea and REM sleep behaviour  
94 disorder which are risk factors for dementia and neurodegeneration and contribute to  
95 cognitive decline [16-18]. These disruptions not only have consequences for health and  
96 social care costs but also affect the quality of life of both the PLWD and their care giver (e.g.,  
97 [19-22]) and are a major contributing factor to the PLWD being moved into care homes  
98 (e.g., [23-25]). These sleep and circadian disturbances may be a consequence of the disease  
99 process and, as such, be an indicator of disease progression (e.g., [26]). Alternatively, or  
100 additionally, sleep disturbances may actually drive disease progression and thus be a target  
101 for intervention to improve the quality of life of both PLWD and their carers. Furthermore,  
102 night-to-night variation in aspects of sleep and sleep continuity in particular have been  
103 shown to predict day-to-day variation in symptoms in dementia [27]. Longitudinal  
104 monitoring of sleep and circadian physiology will benefit our understanding of their  
105 interaction with health outcomes in dementia.

106

### 107 **Gold standard assessments of sleep and circadian rhythms: advantages and disadvantages**

108 We can measure sleep in many different ways from simple self-report (e.g., sleep diaries), to  
109 increasing complexity at the behavioural (e.g. bed occupancy), and physiological (e.g., EEG,  
110 cardiovascular) level. In addition, the classification of sleep can be made at the simple sleep  
111 vs wake distinction to the more detailed macrostructure of the different stages of non-rapid  
112 eye movement sleep (NREM) stages N1 to N3 and REM sleep, and finally to the  
113 microstructure of the electroencephalogram (EEG) signal, as reflected in power spectral  
114 density or other EEG measures. From these different levels of measurements we can derive  
115 a range of parameters to describe sleep from self-reported sleep quality to the timing of  
116 sleep within the 24-h day, total sleep time (TST), sleep onset latency (SOL), wake after sleep

117 onset (WASO), sleep efficiency (SE), spectral power of different EEG frequency bands, and  
118 individual EEG events such as slow waves and sleep spindles as well as their phase  
119 relationships (e.g., [2]).

120         The gold standard method of assessing sleep is laboratory-based polysomnography  
121 (PSG) which is performed in accordance with guidelines of the American Academy of Sleep  
122 Medicine [28]. PSG is a comprehensive overnight physiological assessment including EEG,  
123 electrooculogram (EOG), electromyogram (EMG), electrocardiogram (ECG), oxygen  
124 saturation (SpO<sub>2</sub>), respiration effort and airflow, limb movement (EMG), body position, and  
125 video recording. The recordings can then be scored to provide a detailed picture of sleep  
126 structure and physiology, including the presence of any clinical sleep disorders such as sleep  
127 apnoea where, for example, the apnoea-hypopnea index (AHI) from a single night can be  
128 used to determine disease presence and severity. In addition, periodic limb movements can  
129 be measured to assess for sleep-related limb movement disorder.

130         To understand the contribution of the circadian system to health and disease it is  
131 necessary to be able to characterise its properties which includes: the phase (timing),  
132 amplitude (strength), and period (time taken for one complete cycle) of the rhythms.  
133 Traditionally, assessment of phase and amplitude has been achieved by acquiring time  
134 series data of gold standard measures (e.g., melatonin, cortisol, core body temperature) in  
135 highly controlled laboratory conditions (i.e., dim light, continual wakefulness, controlled  
136 posture, controlled calorie intake) [29]. More recent approaches utilise machine learning or  
137 mathematical models to extract features from only a few samples of high dimensional data  
138 e.g., transcriptomics, metabolomics, or longitudinal simultaneous recordings of light  
139 exposure, activity, and physiology [29]. However, many of these approaches have yet to be

140 tested and validated in different populations or under different sleep/wake, light/dark  
141 schedules.

142           These gold standard approaches can provide a detailed assessment of an individual's  
143 sleep and the phase/amplitude/period of their circadian system. However, these  
144 assessments: a) have high associated cost due to the requirement for participants to be  
145 supervised in a laboratory environment by appropriately skilled staff, b) impose a high level  
146 of burden on participants due to amount of equipment that needs to be worn and needing  
147 to travel away from home to a laboratory setting, c) can be invasive if blood samples are  
148 collected, d) require technical analysis skills e.g., for scoring the PSG recording, and e)  
149 unrepresentative of normal individual sleep patterns due to first night effects and novel  
150 controlled surroundings. Moreover, a single PSG recording and single melatonin profile in  
151 the laboratory only provides a snapshot of an individual's sleep/circadian physiology and  
152 behaviour. Whilst these gold-standard approaches are essential for diagnoses or research  
153 studies they do not provide measures of ecological validity within an individual's home over  
154 an extended period of time.

155

## 156 **Technology for monitoring sleep and circadian rhythms at home: current approaches**

157 New digital health technology to monitor sleep/circadian behaviour and physiology at home  
158 is constantly emerging on the consumer and research markets. Consumer monitoring  
159 devices are designed to appeal to the general public in terms of cost, appearance and the  
160 type or level of information that they provide. These devices can potentially provide  
161 behavioural level data, including bed occupancy and activity, as well as more detailed  
162 physiological signals from which sleep stage, heart rate and breathing rate can be provided.  
163 However, as these are consumer rather than medical devices, no particular level of

164 quantitative performance is mandated or guaranteed. Nonetheless, the ability to cost-  
165 effectively monitor sleep and circadian rhythms in an individual's own home offers several  
166 advantages. Firstly, the assessments are made in a natural environment which allow the  
167 influence of daily activities/behaviours and local environmental factors, including light and  
168 temperature, on sleep and circadian rhythms to be assessed. In fact, many devices also  
169 measure environmental variables including light, noise, and air quality. Secondly,  
170 assessments can be made longitudinally so it is possible to determine how sleep/circadian  
171 rhythms vary over time and investigate how these longitudinal variations associate with  
172 changing behaviours or symptoms. Finally, the capacity to monitor sleep within a home  
173 environment may be beneficial for those suffering from sleep disorders (e.g., sleep apnoea)  
174 where the technology may assist with diagnosis, clinical monitoring, and/or the delivery of,  
175 and monitoring the efficacy of interventions.

176         Longitudinal assessments of circadian rhythms in the field, to date, have taken three  
177 approaches: 1) measuring rest activity patterns with wrist-worn actigraphy in conjunction  
178 with sleep diary, and using sleep timing as a proxy for the timing of the clock, 2) assessment  
179 of circadian phase through sample collection and measurement of melatonin or its  
180 metabolites at defined intervals, 3) combining light and activity measurements with  
181 mathematical models to predict circadian phase [29].

182         Actigraphy records limb movement activity (accelerometry) and then uses a  
183 proprietary algorithm to process this movement data to estimate whether an individual is  
184 awake or asleep for each 60 second epoch, and subsequently derive sleep measures  
185 including TST, SOL and WASO. In addition, non-parametric analysis can be conducted to  
186 determine a range of related variables: inter-daily stability (IS), a measure of day-to-day  
187 consistency of activity patterns, intra-daily variability (IV), a measure of how much activity



188 varies within a 24-hour period, 10 h of highest activity (M10), 5 h of lowest activity (L5), and  
189 relative amplitude (M10: L5). However, the use of the timing of sleep/rest periods as an  
190 estimate for circadian phase is not advisable [3]. The relationship between the circadian  
191 clock, as indexed by melatonin, and sleep timing varies in both healthy individuals [30] but  
192 also in different mental health conditions [3]. Consequently, sleep/rest timing is not a  
193 reliable indicator of the timing of the internal clock. The phase relationship between sleep  
194 and circadian rhythms are relevant, such that it for example predicts whether or not late  
195 sleep timing (eveningness) associates with depressive symptoms [4].

196           Field assessments of the gold standard marker of circadian phase, i.e., melatonin  
197 profiles, are challenged by the fact that melatonin is sensitive to exogenous factors including  
198 environmental light and posture such that participants need to follow a controlled protocol.  
199 Collection of saliva samples, under dim light whilst seated, at 30 min intervals in the 3 – 4  
200 hours before habitual bedtime allows the dim light melatonin onset (DLMO) to be  
201 determined as a marker of circadian phase. Implementation of technology, including  
202 containers that track when salivettes are removed for sampling, have allowed the  
203 development of home protocols that have been validated, in a within-subject design,  
204 against DLMO collected in the laboratory [31]. An alternative approach that is less  
205 restrictive for participants is 48-hour urinary collections to measure the urinary metabolite  
206 of melatonin, 6-sulphatoxy-melatonin (aMT6s). This methodology has been used  
207 successfully in both blind individuals and those living with schizophrenia, who frequently  
208 suffer circadian and sleep disruption, to track circadian phase over several weeks (e.g., [32-  
209 34]). It should be noted that this approach may cause burden to participants and, as the  
210 circadian parameters are computed from a rhythm derived from samples collected over 4 –  
211 8-hour bins, the markers may not have sufficient resolution to detect small but relevant

212 changes in circadian phase. More recently, statistical and mathematical models for the  
213 interaction between the circadian system, sleep homeostat and environmental light  
214 exposure approaches have been successfully applied to wearable data to predict circadian  
215 phase [35-37].

216

### 217 **Evaluating technology: the issues**

218 The main issues with novel technology are: 1) lack of evaluation against gold standard  
219 measures such that the device output cannot be verified, 2) consumer device hardware and  
220 algorithms are constantly being updated which means that any evaluation that has been  
221 performed may be rapidly out of date, 3) if evaluation studies are performed then they are  
222 typically in young, healthy individuals for a habitual time-in-bed period where sleep  
223 efficiency is high and where rest/activity rhythms are robust and regular.

224 These issues of evaluation studies means that the device performance may not  
225 translate to situations of disturbed sleep/circadian rhythms or in clinical/older populations  
226 who may benefit from long-term use of the devices. For example, sleep undergoes well-  
227 characterised changes with age, but also in dementia, at both the macro- and  
228 microstructure level. These macro changes include changes in sleep timing, shortened or  
229 extended nocturnal sleep duration/time in bed, increased number of nocturnal awakenings  
230 and time spent awake during the night, decreased slow wave and REM sleep, and increased  
231 frequency of daytime naps (reviewed in [38]). At the microarchitecture level, with age and  
232 in dementia there are reductions in slow wave activity (SWA) in NREM sleep, particularly in  
233 the prefrontal cortex and during the first NREM cycle of the sleep episode, as well as a  
234 decreasing number of sleep spindles and reductions in REM sleep (reviewed in [39-41]).

235 This alteration in both the sleep signal and sleep continuity with age and in dementia implies

236 that sleep monitoring devices that perform well in young people may not do so well in older  
237 people or in people living with dementia. Nevertheless, there is a lack of evaluation studies  
238 in particular in PLWD [42]. For example, a recent systematic review of the validity of non-  
239 invasive sleep-measuring devices aimed at assessing their future utility in dementia, was not  
240 able to identify any studies in people with mild cognitive impairment or Alzheimer’s Disease  
241 [43].

242 In addition to changes in sleep, aging is associated with changes in the circadian  
243 system in terms of its timing, amplitude, and relationship with sleep (e.g., [44]) as well as  
244 changes in light exposure, crucial for stability and robustness of the clock, due to changes in  
245 photic sensitivity (e.g., [45]) and the lived light environment (e.g., [46]). As such, circadian  
246 technologies may not perform as well in older individuals.

247 The ‘International Biomarkers Workshop on Wearables in Sleep and Circadian  
248 Science’ held at the 2018 SLEEP Meeting of the Associated Professional Sleep Societies  
249 identified that the main limitation of large-scale use of novel sleep and circadian wearables  
250 is the lack of validation against gold-standard measures [47]. The workshop formulated  
251 guidelines for validation and confirmed that: PSG is the only valid reference for TST and  
252 sleep staging; PSG sleep records should be scored using current AASM guidelines; PSG sleep  
253 records should be double scored to minimise bias. Devices differ in the level at which they  
254 classify sleep-wake, from binary (sleep or wake) to four stages (wake (W), REM, light sleep  
255 (LS), deep sleep (DS)) to full AASM (W, stage 1 NREM (N1), stage 2 NREM (N2), stage 3  
256 NREM (N3), REM) scoring. The ability of a device to over or underestimate sleep and wake  
257 will depend on its sensitivity (ability to correctly classify sleep epochs), specificity (ability to  
258 correctly classify wake epochs), and accuracy (proportion of all epochs correctly detected)  
259 (reviewed in [47, 48]). These factors will depend on the physiological variables and

260 classification system used to determine sleep and wake. For example, according to  
261 traditional performance measures, actigraphy tends to have high sensitivity and accuracy  
262 but low specificity [49]. Despite this, actigraphy is considered a valuable tool for long-term  
263 monitoring of rest/activity patterns in clinical populations [50].

264         Although it is crucial to evaluate the performance of a device against gold-standard  
265 measures, perhaps even more important is to assess its performance longitudinally in the  
266 real world where it will be used in both older adults and PLWD. Simultaneously, to increase  
267 our understanding of sleep and circadian rhythms in the real-world and their interaction  
268 with disease processes, it is important to monitor relevant environmental variables that may  
269 impact sleep or the circadian system, in particular environmental light which is critical for  
270 synchronising the circadian system (e.g., [9]) as well as modifying our levels of alertness,  
271 mood, and performance. In addition to assessing performance, it is also critical to  
272 determine that the device is cost-effective and scalable, and to assess the acceptability of  
273 novel sleep/circadian monitoring devices in the end-user group. This will include assessing  
274 comfort, burden, obtrusiveness, and how easy the device is to use.

275         Here we describe our approach to evaluating novel wearable and contactless sleep,  
276 circadian and environmental monitoring technology in community-dwelling adults both at  
277 home and in the laboratory using multiple devices simultaneously against accepted  
278 standard measures. We use this approach in cognitively intact older adults as well as PLWD  
279 and their caregivers. Here, we provide some examples of the results from cognitively intact  
280 adults and PLWD. Whilst our protocol focuses on technology that can be used in PLWD for  
281 long-term monitoring at home, this approach could be applied to many technologies and  
282 populations.

283

## 284 **Materials & Methods**

285 Our approach was to first conduct a study in cognitively intact older adults to assess the  
286 performance and acceptability of a range of devices before utilising our initial findings to  
287 design a feasibility protocol to implement selected technology in PLWD and their caregivers.  
288 Both studies used the same approach of multiple days recording at-home followed by an in-  
289 laboratory, residential overnight session. The study in cognitively intact adults is completed,  
290 and some of the results have been published [51, 52] and the study in PLWD and their  
291 caregivers is ongoing.

292

## 293 **Study Design**

### 294 **Ethical approval**

295 The study in cognitively intact older adults received a favourable opinion from the University  
296 of Surrey Ethics Committee, and the study in PLWD and their caregivers from an NHS ethics  
297 committee (22/LO/0694). The protocols are conducted in accordance with the Declaration  
298 of Helsinki and guided by the principles of Good Clinical Practice. Written informed consent  
299 is obtained from participants before any procedures are performed. All participants are  
300 compensated for their time and inconvenience. Within the participant information sheet, it  
301 is clearly stated that all personal data is handled in accordance with the general data  
302 protection regulations (GDPR) and the UK Data Protection Act 2018. In addition, it is  
303 explained that anonymised non-personal data may be transferred to the manufacturers of  
304 the devices being tested if they need to process the data. The manufacturer can only access  
305 anonymised data that details the serial number of the device, the date of recording, and the  
306 signals recorded on that specific date. The manufacturers may use this anonymised data in  
307 their continual assessments of the performance of their device.

## 308 **Participants**

309 For an evaluation study, the study population selected must ensure that the findings are  
310 relevant to the use case. For our initial protocol in cognitively intact older adults, the  
311 eligibility criteria for participation in the protocol were designed to maximize the plausibility  
312 of relevance for the PLWD population. As such, the target population consisted of  
313 cognitively intact, independently living, non-smoking, men and women aged between 65 –  
314 85 years. Participants had to consume  $\leq 28$  units of alcohol per week and were current non-  
315 smokers. Those with stable controlled medical conditions were included to ensure a  
316 representative heterogeneous population for this age range. This approach is in contrast to  
317 the stringent criteria, in relation to health conditions and medication, applied for most  
318 clinical trials.

319 For our protocol in PLWD and their caregivers, the inclusion/exclusion criteria for  
320 PLWD include: age range of 50 – 85 years, a confirmed diagnosis of prodromal or mild  
321 Alzheimer’s disease, an S-MMSE (Standardised Mini Mental State Examination, [53]) score  $\geq$   
322 23, living in the community and, if taking medication for dementia, being on a stable dose  
323 for three months prior to recruitment. Individuals who have an unstable mental state,  
324 severe sensory impairment, active suicidal ideation, or being treated for terminal illness are  
325 not included. PLWD can participate in the study by themselves, or their carer/family  
326 support/friend may also enrol as a ‘study partner’ participant. These study partners must  
327 be  $\geq 18$  years, have an S-MMSE score  $\geq 27$ , and must have known the PLWD for at least six  
328 months and be able to support them in their participation. Study partners complete the  
329 same procedures as the PLWD.

330 Cognitively intact older adults were recruited via our Clinical Research Facility  
331 database where potential participants have registered and consented to be contacted about

332 ongoing research. PLWD and their study partners are recruited in collaboration with local  
333 NHS trusts via memory services. All participants undergo an initial telephone interview and  
334 subsequent in-person screening visit to determine their eligibility to take part in the study.

335         At the screening visit for cognitively intact older adults, following informed consent,  
336 participants completed a range of assessments including measurement of height, weight  
337 and vital signs (body temperature, heart rate, respiration rate and blood pressure), self-  
338 reported medical history, and completion of baseline questionnaires: Epworth Sleepiness  
339 Scale (ESS) [54] (> 10 indicates excessive daytime sleepiness), Pittsburgh Sleep Quality Index  
340 (PSQI) [55] (> 5 indicates a sleep disorder), Activities of Daily Living Questionnaire (ADL) [56]  
341 and International Consultation on Incontinence Questionnaire – Urinary Incontinence (ICIQ-  
342 UI) [57].

343         At the screening visit for PLWD (and study partners, when applicable), and following  
344 informed consent, the participants complete standard assessment tools which are  
345 frequently used in this population (i.e. sMMSE [53]) Hospital Anxiety and Depression Scale  
346 (HADS) [58], quality of life in Alzheimer’s Disease (QoL-AD) [59] as well as the PSQI [55], and  
347 medical history questionnaire. In addition, vital signs are recorded as well as height, weight,  
348 and BMI. PLWD and their study partners also complete additional questionnaires either at  
349 this visit or during their overnight sessions: ESS, ADL, ICIQ, National adult reading test  
350 (NART) [60], Berlin questionnaire to assess for sleep apnoea [61], Horne-Ostberg  
351 questionnaire [62] to assess time of day preference, and their education level is  
352 documented. For all participants, their general practitioner is informed of their  
353 participation.

354

355

## 356 **Technology evaluated**

357 Within our protocol we have categorised the technology according to how it is used or what  
358 it is monitoring: a) wearable devices that are placed on the body (e.g., wrist, head), b)  
359 nearable/contactless devices that are placed near the individual (e.g., bedside or under the  
360 mattress) to detect physiological or behavioural signals, c) environmental monitoring  
361 devices (e.g., light, temperature), d) use-able devices that the participant interacts with  
362 (e.g., electronic tablet for cognitive testing), e) video monitoring that provides information  
363 about the individual and the environment.

364 The technology assessed in the current study was selected on the basis of: a)  
365 previous evaluation studies, b) inclusion in comparable studies, c) regulatory status, d) cost,  
366 e) potential acceptability to PLWD. We included both research grade and consumer  
367 directed devices. The number of devices tested simultaneously took account of potential  
368 burden on participants and ensured that adequate signals could still be obtained when  
369 multiple devices were worn (appropriately positioned). Cognitively intact participants wore  
370 no more than four wrist devices (two per arm) at any one time whereas in PLWD no more  
371 than two were worn. The technology used in each protocol is shown in Table 1.

372

## 373 **Study Protocol**

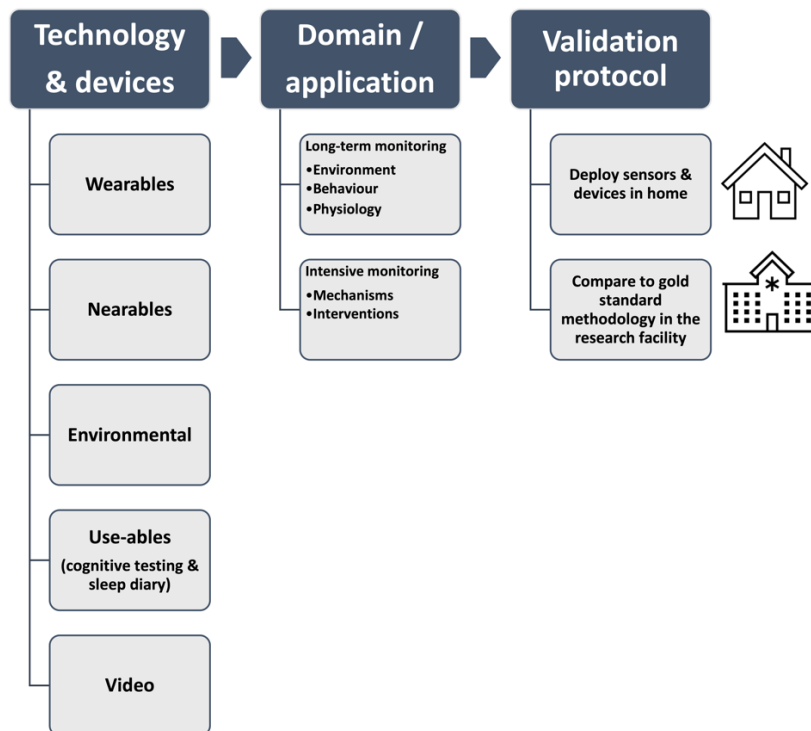
374 These studies are designed to assess the performance and acceptability of a range of  
375 devices simultaneously, firstly longitudinally at-home (7 – 14 days) with actiwatch/sleep  
376 diaries as a reference point and then in an overnight laboratory session with concurrent  
377 gold standard video-PSG. The AASM recommends that actigraphy is always accompanied by  
378 completion of sleep diaries to allow optimal interpretation of the actigraphic data [63] and



379 that data is collected for a minimum of 72 hours to 14 days [50]. The concept of the study is  
380 shown in Figure 1 and a schematic diagram of the protocol is shown in Figure 2.

381

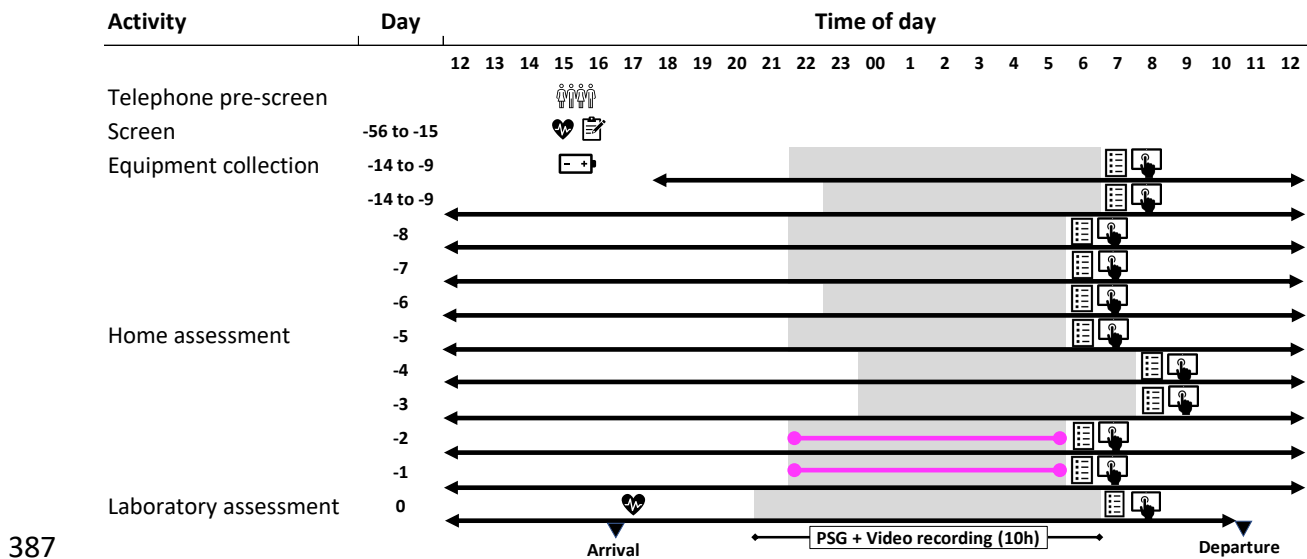
382



383

384 **Figure 1.** Overview of the concept of the protocol and categories of the devices included,  
385 the data and application domain, and the study design.

386



387

388

**Figure 2.** Schematic diagram of the protocol design. The people symbol indicates when the

389

telephone pre-screening assessment was conducted. The clipboard symbol indicates

390

completion of questionnaires, the heart symbol when vital signs were measured, and the

391

battery symbol indicates when participants were trained to use the technology. Grey bars

392

indicate sleep periods and white bars indicate wake periods. The symbol of a hand using an

393

electronic tablet indicates completion of the cognitive test battery, and the questionnaire is

394

used at home to measure sleep physiology. The pink horizontal line indicates when an EEG device was

395

used at home to measure sleep physiology. The black horizontal line indicates the use of

396

wearables and nearables throughout the at-home period.

397

398

*Longitudinal monitoring at-home* - Participants are provided with a range of technology to

399

use in their home to monitor their sleep/wake patterns and environmental light exposure

400

(see Table 1 for list of devices and variables measured). The technology is either installed by

401

the participants themselves or researchers may go to the participants' homes to assist

402

them. The wrist-worn/collarbone-worn devices are worn continually and participants are

403

requested to complete a log whenever they remove them to record times and reason for

404 removal. The EEG wearables are only used for one or two nights and the nearables are left  
405 *in situ* throughout. Participants are requested to complete a modified version of the  
406 Consensus Sleep Diary-M [64] (electronically or on paper) on a daily basis to record  
407 subjective information about their sleep patterns, sleep quality, daytime napping as well as  
408 alcohol and caffeine consumption. In addition to the standard questions, participants are  
409 asked to provide further details about their daytime naps (what time, duration, where and  
410 why they napped) and nocturnal awakenings (for each awakening, what time they awoke,  
411 how long it took to fall asleep, if they left the bed, and if so, what time). Participants are  
412 requested to complete cognitive assessments one to two hours after waking each day on an  
413 electronic tablet.

414

415

416

417

418

419

420

421

422

423

424

425

426

427

428 **Table 1.** Commercially available and research-grade devices used in the study protocols.

Location	At home/in Lab	Study – Cognitively intact	Study – PLWD & study partner
<b>Wearables</b>			
Wrist	<i>At home &amp; in Lab</i>	Actiwatch Spectrum (Philips Respironics, US): activity; sleep estimates; white, red, green, and blue light. Withings Steel watch (Withings, France): activity; sleep estimates, heart rate. AX3 (Axivity, UK): activity, white light. Apple watch (Apple, US): activity; sleep estimates, heart rate.	Withings ScanWatch (Withings, France): activity; sleep estimates, heart rate. AX3 or AX6 (Axivity, UK): activity, white light.
	<i>In Lab only</i>	E4 (Empatica, Italy): activity; wrist temperature; heart rate.	
Head	<i>At home &amp; in Lab</i>	Dreem Headband 2 (Dreem, France): EEG sleep, position, activity.	Dreem Headband 2 (Dreem, France): EEG sleep, position, activity.
	<i>In Lab only</i>	Marvels ear-EEG sensor prototype developed by Imperial College (London, UK)	Marvels ear-EEG sensor prototype developed by Imperial College (London, UK) Somnomedics Home Sleep Test (SOMNOmedics GmbH, Germany): EEG sleep.
<b>Nearables</b>			
Under mattress	<i>At home &amp; in Lab</i>	Withings Sleep Mattress Analyser (Withings, France): sleep, breathing rate, heart rate, activity, bed occupancy. EMFIT QS (EMFIT Limited, Finland): sleep, breathing rate, heart rate, activity, bed occupancy.	Withings Sleep Mattress Analyser (Withings, France): sleep, breathing rate, heart rate, activity, bed occupancy.
	<i>In Lab only</i>	N.A.	N.A.
Nightstand	<i>At home &amp; in Lab</i>	N.A.	Somnofy (VitalThings, Norway): sleep, breathing rate, bed occupancy.
	<i>In Lab only</i>	Somnofy (VitalThings, Norway): sleep, breathing rate, bed occupancy. Tiresias networked radar system prototype (Imperial College, London, UK) [65]: sleep, breathing rate, bed occupancy.	Tiresias networked radar system prototype (Imperial College, London, UK) [65]: sleep, breathing rate, bed occupancy.
<b>Environmental</b>			
One worn at level of collarbone when awake & one hung in living space	<i>At home &amp; in Lab</i>	HOBO (Tempcon, UK): white light, temperature.	HOBO (Tempcon, UK): white light, temperature.
	<i>In Lab only</i>	N.A.	N.A.
<b>Use-ables</b>			
N.A.	<i>At home &amp; in Lab</i>	Electronic tablet with Cognitron and sleep diary.	Electronic tablet with Cognitron and sleep diary.
	<i>In Lab only</i>	N.A.	N.A.
<b>Video</b>			
Sleep Lab	<i>At home &amp; in Lab</i>	N.A.	N.A.
	<i>In Lab only</i>	Somnomedics video camera (SOMNOmedics GmbH, Germany).	Somnomedics video camera (SOMNOmedics GmbH, Germany).

429

430 *Overnight laboratory session* – The session is ~24 hours in duration and participants are  
431 required to arrive in the afternoon and remain at the Research Centre, which hosts the  
432 UKDRI clinical research facility at Surrey, until the following day. Upon arrival, participants’  
433 vital signs are measured, and continued eligibility assessed. The devices that have been used  
434 at home are downloaded, reset, and provided back to the participants with any additional  
435 devices only used in the laboratory. During their stay, participants also have assessments of  
436 their gait and postural stability made using video and radar technology.

437 During the laboratory session, participants have an indwelling cannula sited for  
438 collection of regular blood samples at 3-hourly intervals (including overnight) for 24 hours to

439 assess time of day variation in biomarkers. The samples are processed and are analysed for  
440 levels of melatonin, as a gold-standard marker of the circadian clock, as well as biomarkers  
441 of dementia e.g., neurofilament light (NfL), phosphorylated tau (p-tau), amyloid-beta (A $\beta$ 40,  
442 A $\beta$ 42 (e.g., [66-68]). In addition, participants collect urine for 24 hours in four-hourly  
443 intervals (eight hours overnight) for measurement of aMT6s.  
444 Following dinner, participants are equipped with all the electrodes and sensors required for  
445 a clinical video-polysomnographic (PSG) recording using AASM compliant equipment and  
446 montage. The PSG equipment is the Somnomedics SomnoHD system with Domino software  
447 (v 3.0.0.6, sampled at 256 Hz (SOMNOmedics GmbH, Germany) and we use an American  
448 Academy of Sleep Medicine (AASM) standard adult montage. Participants can also have a  
449 wearable EEG device fitted for concurrent EEG recording and contactless sensors are  
450 positioned for overnight recordings. Prior to the start of the PSG recording, participants are  
451 asked to lie on the bed in different supine poses (prone, supine, right, left, seated) and  
452 recordings are made with video and radar technology to assess the ability of the radar  
453 technology to assess physiology in different poses.

454         The protocol takes advantage of the ‘first night effect’ and an extended period in bed  
455 to create a model for mildly disturbed sleep [69]. Participants are required to be in bed for  
456 a 10 h recording period that is determined on the basis of their habitual time in bed period  
457 (HTiBP). For example, for HTiBP < 8 h, the recording period starts one hour earlier than  
458 habitual bedtime; for HTiBP > 10 h, the recording starts at habitual bedtime. For those with  
459  $8 \text{ h} \leq \text{HTiBP} \leq 10 \text{ h}$  the recording start time is determined as: Habitual Bedtime –  $[0.5 \cdot (10 -$   
460  $\text{HTiBP})]$ . This extended period in bed is used to ensure that the recordings include periods  
461 of quiet, recumbent wake to determine if the devices can distinguish quiet wake from sleep.  
462 Participants select their own lights off/on times and around these times are permitted to

463 conduct quiet, sedentary activities e.g., watching movies, reading. Overnight recordings are  
464 performed in individual, environmentally controlled bedrooms or in our bespoke bedroom  
465 facility that has double occupancy or adjacent room access for PLWD and their study  
466 partners.

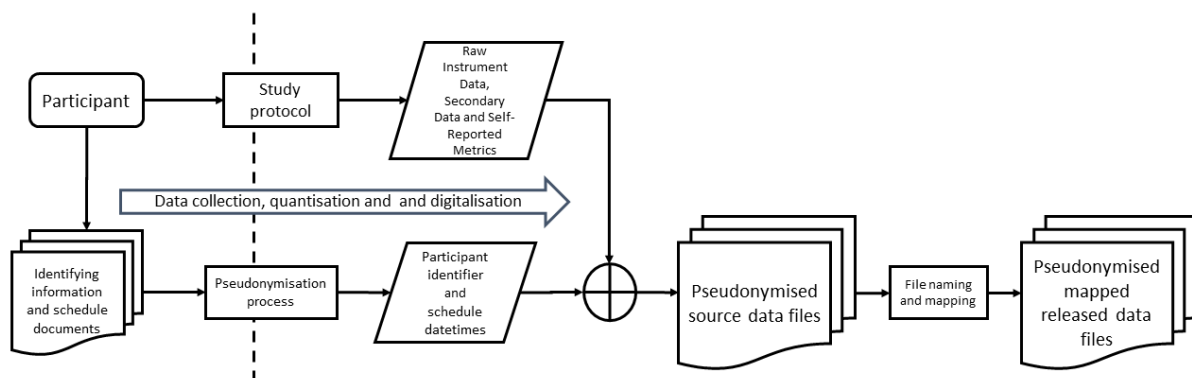
467 Upon awakening, participants are requested to complete their sleep diary and cognitive test  
468 battery as well as a questionnaire about device acceptability. The questionnaire asks  
469 participants to rate comfort (1 – very uncomfortable to 7 – very comfortable), ease of use (1  
470 – very difficult to 7 – very ease), and to record any problems. Prior to discharge, vital signs  
471 are taken and for cognitively intact older adults the S-MMSE was administered.

472

### 473 **Device and data management**

474 The flow of data acquisition and data management is shown in Figure 3.

475



476

477 **Figure 3.** Overview of data acquisition and data management.

478

479 *Device allocation* - Eligible participants are enrolled into the study and have a set of devices  
480 allocated to them. All devices and systems have unique identifiers, with a one-to-one  
481 allocation of: a) device code to participant for wearable/contactless devices used at home or

482 in the lab and b) device to location to participant for devices installed in the laboratory (e.g.,  
483 floor sensor data is recorded for a specific lab room, and the room is allocated to the  
484 participant). All devices are mapped to an operation schedule which means that data are  
485 collected during each 24-hour period from 12 noon to 12 noon the following day unless the  
486 device has continuous recording.

487

488 *Device set-up and synchronisation* - To be able to directly compare the performance of  
489 different devices it is essential that they are time synchronised. All network device clocks  
490 are synchronised to a Network Time Protocol (NTP) server. Commercial standalone systems  
491 are synchronised through the respective software applications used to set up the device  
492 recordings.

493

494 *Data acquisition* - The devices used are either battery powered logging devices or are  
495 directly connected to power and either store data locally or are wi-fi enabled and transmit  
496 data to the secure cloud servers of the manufacturers. Participants are provided with an  
497 independent Wi-Fi 4G gateway for device connection.

498       Upon arrival at the laboratory, all devices are collected from participants for: a)  
499 download of data and confirmation of power levels for battery powered devices, b)  
500 reconfiguration of connected devices to connect to local Wi-Fi connections. Devices to be  
501 used during the laboratory session are returned to the participants.

502       At the end of the lab session all logging devices are connected to the relevant secure  
503 system and source data files extracted and moved to a location based on the participant,  
504 day(s) and device for that data. For the online server-based systems, these are

505 synchronised, and data is then extracted and placed into the relevant source data file  
506 system.

507

508 *Data mapping and file name convention* - All data recorded as a source file, or in a source  
509 system is mapped to a named file and location based on study specific parameters e.g.,  
510 Study Name (required), Device code (required), Test/Data/Measure (Optional), Participant  
511 or group (required) Visit (required) Study day/night (required). Access to this Research Data  
512 Store (RDS) is strictly controlled in accordance with Information Governance procedures for  
513 the specific use of the study protocol owners for analysis.

514

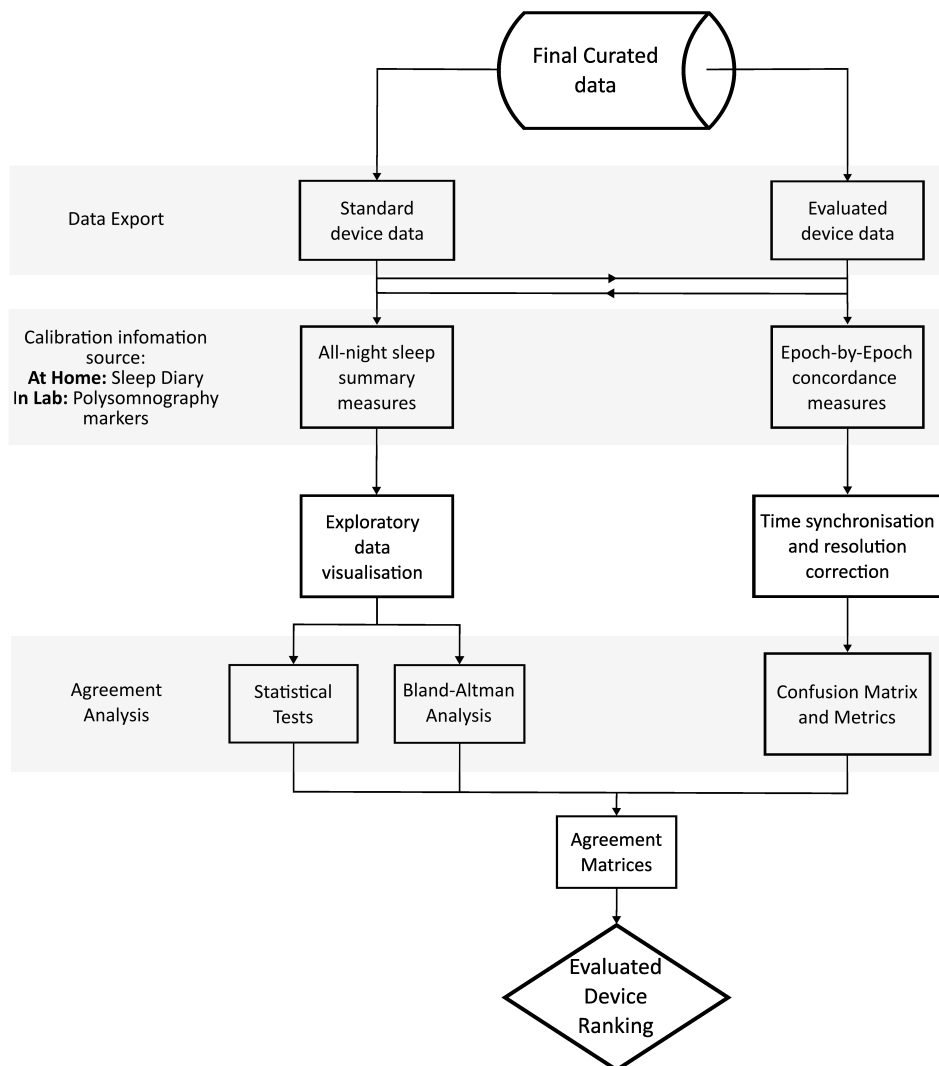
#### 515 **Data processing and analysis**

516 To evaluate the accuracy and reliability of the focus technology (devices being evaluated) in  
517 measuring sleep, we compare it to a standard reference technology. For the at-home  
518 recordings, the comparative standard measure against which all other technologies are  
519 evaluated is the combination of the Actiwatch-spectrum (AWS) and Consensus Sleep Diary  
520 (cognitively intact adults) or AX3 and Consensus Sleep Diary (PLWD and study partners). For  
521 the in-laboratory session, the PSG is considered the gold-standard measure [28, 50, 70] for  
522 all participants. The PSG recordings are scored in 30 second epochs (in accordance with  
523 AASM guidelines) by two independent scorers and a consensus hypnogram is generated.  
524 AHI is determined using the AASM criteria for scoring apnea/hypopneas where there is  $\geq 3\%$   
525 drop in oxygen saturation and/or an arousal.

526 The focus technology is evaluated against the standard reference technology (AWS +  
527 sleep diary or PSG) for its ability to estimate sleep summary measures (e.g., TST, SOL). In  
528 addition, in the laboratory, the focus technology is assessed for its epoch-by-epoch (EBE)



529 concordance with the PSG hypnogram. Sleep summary measures are obtained from  
530 processing data using local individual proprietary software for battery logging devices or via  
531 raw signals being uploaded to a cloud-based server for scoring by a proprietary machine-  
532 learning based algorithm. Our approach to data analysis is depicted in Figure 4.  
533



534  
535 **Figure 4.** Overview of process for evaluating consumer-grade technology against standard  
536 device.

537

538

## 539 **Sleep summary measures**

540 The sleep summary measures can be grouped into two categories: 1) sleep/wake measures  
541 e.g., TST, SOL, WASO, and SE, and 2) sleep stage duration measures. The sleep stage  
542 duration measures vary depending on the level at which the focus device classifies sleep-  
543 wake i.e., binary, four stages or full AASM. The interval over which the sleep summary  
544 measures are calculated (analysis period) is either automatically set by the device algorithm  
545 or can be manually set using either the sleep diary reported times of attempted sleep and  
546 final awakening (standard for at-home recordings) or the lights off period or total recording  
547 period (standard for in-laboratory recording) [28, 50]. The analysis period chosen can have  
548 a substantial impact on the summary measures calculated and the performance of the  
549 device when compared to home/laboratory standards [51].

550 All of the focus technologies generate summary measures automatically using the  
551 device algorithm determined analysis period. The primary analysis is performed using these  
552 automatic summary measure estimates. However, for completeness, the summary  
553 measures can also be manually calculated.

554 A number of data visualisations (scatter plots, box plots, QQ plots, etc.) are  
555 performed to check the distribution of the data and for the presence of outliers. Further  
556 statistical tests are performed to check the normality of the data. For the agreement  
557 estimation, Bland-Altman analysis is performed and bias, limits of agreement and minimum  
558 detectable change are estimated. Other metrics that can be computed include for example  
559 Pearson's correlation, consistency intraclass class correlation (ICC), effect size (Cohen's D)  
560 and mean absolute percentage error (MAPE) [71, 72]. To rank the devices, the agreement  
561 matrices containing the sleep measure accuracy metrics are created.

562

563 **Epoch-by-epoch (EBE) concordance**

564 At-home recordings: the resolution of the focus technology's hypnogram is reduced to  
565 binary sleep/wake classification to match the AWS which is used as the comparative  
566 standard measure. The analysis window is set between 18:00 h to 12:00 h and all common  
567 periods of sleep/wake timeseries are evaluated.

568 In-laboratory recordings: the PSG hypnogram resolution is reduced to match the levels of  
569 sleep stage output by the device (e.g., N1+N2 = light sleep (LS) and N3 = deep sleep (DS)) to  
570 allow direct comparison. Only valid pairs of epochs between PSG and device are used for the  
571 concordance analysis. The analysis window is set as the total recording period (~10 hours).  
572 The EBE concordance metrics for the devices are estimated from the confusion matrices  
573 constructed. The concordance metrics used for the analysis of all the different sleep stage  
574 levels include, sensitivity, specificity, accuracy, Matthew's correlation coefficient (MCC) and  
575 F1 score. Similar to the sleep summary measures analysis, an agreement matrix for EBE  
576 concordance is created using MCC. MCC is preferred to other concordance metrics since it  
577 accounts for class imbalance commonly encountered in hypnogram data and is a better  
578 alternative to the metrics such as kappa or its variants [73]. The final device ranking is  
579 created using the summary sleep measures and EBE agreement matrix. Furthermore, the  
580 effect of participant characteristics such as age, sex, BMI, AHI and other confounding factors  
581 on the device accuracy and reliability are also explored.

582

583 **Environmental measures**

584 Characterising the environment, in particular light, is crucial to understanding  
585 sleep/circadian physiology in the real-world and in different disease states. In the current  
586 studies, light exposure patterns were assessed by both static and worn devices which

587 recorded lux values at one-minute intervals. One wearable (which measures white, red,  
588 green and blue light) was worn on the wrist and one was clipped on clothing near the  
589 collarbone; the static device was placed in the room of the home where the participant  
590 spent the majority of their time. During data visualisation, imputation was performed for  
591 any periods during which the participants were awake, but the measured light levels were 0  
592 lux, which could be due to the sensors being accidentally covered. The imputation consisted  
593 of replacing these zero values with the median value from the preceding and succeeding 30  
594 min. This was calculated across all available days of data for each participant separately.  
595 The consistency of measurements between devices was assessed by performing correlations  
596 between the lux values obtained by the wrist worn and collarbone-worn devices.

597

#### 598 **Quality assurance and mitigating issues Troubleshooting**

599 To maximise data completeness and quality, during the study conduct, data acquisition from  
600 wi-fi enabled devices is monitored daily and participants can be contacted if any issues arise.  
601 Participants are also able to contact the researchers 24/7 with any issues or concerns. Some  
602 potential issues that may arise and their mitigations are presented in Table 2.

603

604

605

606

607

608

609

610

611 **Table 2.** Device evaluation studies: potential issues and mitigations

Potential issue	Mitigation
<b>Device synchronization:</b> Devices may not be time synchronized if they were setup/downloaded/analysed on different systems. This could be due to the fact that some devices will use timestamps on local machines whereas others use UTC. This has previously been identified as being critical for epoch-by-epoch analysis [47].	Possible solutions could be using a physiological signal e.g., eye blinks or moving the wrist, as a synchronizing signal for cross correlation.
<b>Missing data:</b> This could occur due to equipment malfunction, user error, data signal loss, data storage insufficiency, or user error (e.g., wearing the device incorrectly, not using the device when required, forgetting to update apps, forgetting to enter data, unplugging or obstructing wearable devices)	Potential mitigations include: a) ensuring participants are thoroughly trained in the use of all equipment and provide instructions to take home, b) where possible, remotely monitor data acquisition and follow up if needed, c) test all equipment before use.

612

### 613 **Expertise needed to implement the protocol**

614 These studies require a team of trained personnel to ensure participant safety and well-being as well as data quality and integrity including troubleshooting issues with devices.

616 This level of support is required from the point of consent, throughout the at-home data collection and for the overnight laboratory session. In addition, specialised and competent staff are required for collecting blood samples, PSG instrumentation, PSG recordings, PSG scoring, and data analysis.

620

## 621 **Results**

### 622 **Participant characterisation**

623 For our initial protocol, 45 out of 46 cognitively intact participants were screened and deemed eligible for the study and, of these, 36 participants were enrolled in the study and

625 35 participants (14 female: 21 male) completed the study. They had a mean age of  $70.8 \pm$   
626  $4.9$  years (range: 65 – 83 years) and a mean BMI of  $26.7 \pm 4.7$  kg/m<sup>2</sup> (range: 20 – 40) which  
627 is representative of the UK population in this age bracket [74]. Current co-morbid stable  
628 medical conditions were reported by 40% of participants, including type 2 diabetes,  
629 arthritis, and hypertension, and 26% of participants were on prescribed medications. The  
630 participants had the following scores (mean  $\pm$  SD) from the baseline questionnaires: a) PSQI:  
631  $4.1 \pm 2.1$ , b) ESS:  $3.6 \pm 2.5$ , c) ADL:  $7.9 \pm 0.2$ , d) ICIQ:  $1.0 \pm 1.7$ , e) S-MMSE:  $28.7 \pm 1.4$ . From  
632 the laboratory session, it was identified that 89% of participants had apnoea-hypopnea  
633 (AHI) scores indicative of sleep apnoea: 40% mild (AHI: 5 – 14), 26% moderate (AHI: 15 - 30)  
634 and 23% severe (AHI: > 30).

635 For our feasibility study in PLWD and their study partners, to date we have enrolled  
636 seven control participants (65 – 85 years) (3 females: 4 males) who had a mean age of  $67.0 \pm$   
637  $6.2$  years (range 61 – 79 years) and a mean BMI of  $26.4 \pm 3.8$  kg/m<sup>2</sup> (range: 22 – 32.6). We  
638 have enrolled 11 PLWD of whom eight (4 females: 4 males) have completed the study and  
639 six of these had study partners (3 females: 3 males). The PLWD had a mean age of  $74.8 \pm$   
640  $4.4$  years (range 67 – 81 years) and a mean BMI of  $29.7 \pm 7.6$  kg/m<sup>2</sup> (range: 20.7 – 42.1). The  
641 study partners had a mean age of  $66.7 \pm 14.8$  years (range 44 – 80 years) and a mean BMI of  
642  $28.9 \pm 4.1$  kg/m<sup>2</sup> (range: 23.9 – 33.6). These participants also report stable co-morbid  
643 medical conditions including type 2 diabetes, hypertension, arthritis and hypothyroidism,  
644 and are taking concomitant medications.

645

#### 646 **Data completeness**

647 The 35 cognitively intact participants from our initial study collected data for 7-14 days at  
648 home which combined was a total of 397 days/nights. We recorded from 6-10 devices

649 (number of nights per device depended upon participant and device) which was a total of  
650 2748 device days/nights from all the devices combined and we had 95% data completeness.  
651 In the laboratory, we recorded 35 nights with 8-10 devices which was 331 device nights,  
652 including PSG, and achieved 98% data completeness.

653

#### 654 **Device acceptability**

655 For all the wearable devices (n = 35 reported), participants rated the comfort as  $3.8 \pm 1.9$   
656 and the ease of use as  $6.0 \pm 1.2$ . For the nearable devices (n = 17 reported), participants  
657 rated the comfort as  $6.3 \pm 1.2$  and the ease of use as  $6.3 \pm 1.1$ .

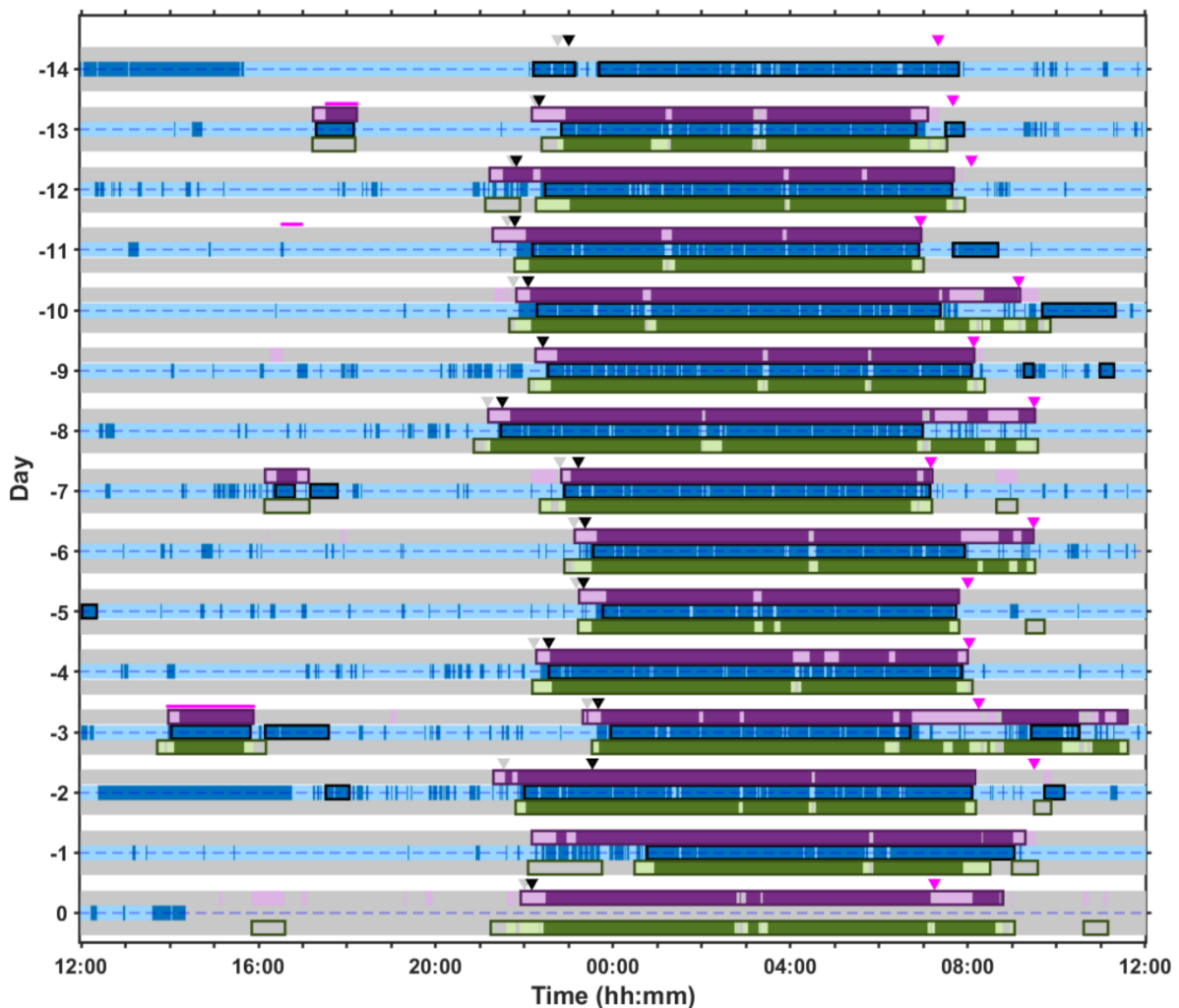
658

#### 659 **Examples of at-home and in-laboratory recordings**

660 One of the strengths of our approach and using multiple simultaneous devices is that it is  
661 possible to obtain concurrent physiological, behavioural, and environmental signals both at-  
662 home and in a laboratory setting. Here we show examples from individual participants of  
663 the datasets that can be obtained.

664 Figure 5 shows exemplar data from a cognitively intact male participant in their 60s who had  
665 moderate sleep apnoea (AHI = 24.1) and was living with controlled type 2 diabetes. The  
666 raster plot includes 14-consecutive days of home recording followed by the overnight in-  
667 laboratory session, simultaneously using two contactless, nearable technologies and a wrist  
668 worn actigraphy device (actigraphy was not used in the laboratory) with completion of a  
669 subjective sleep diary. The raster plot provides a measure of sleep behaviour and shows the  
670 day-to-day variation in sleep timing. The two under-mattress, contactless devices  
671 accurately detect bed presence as demonstrated by their concordance with the information

672 captured in the sleep diary [52]. These devices can also capture daytime naps taken in bed  
673 and generate automated sleep summaries (boxed regions in the raster).  
674

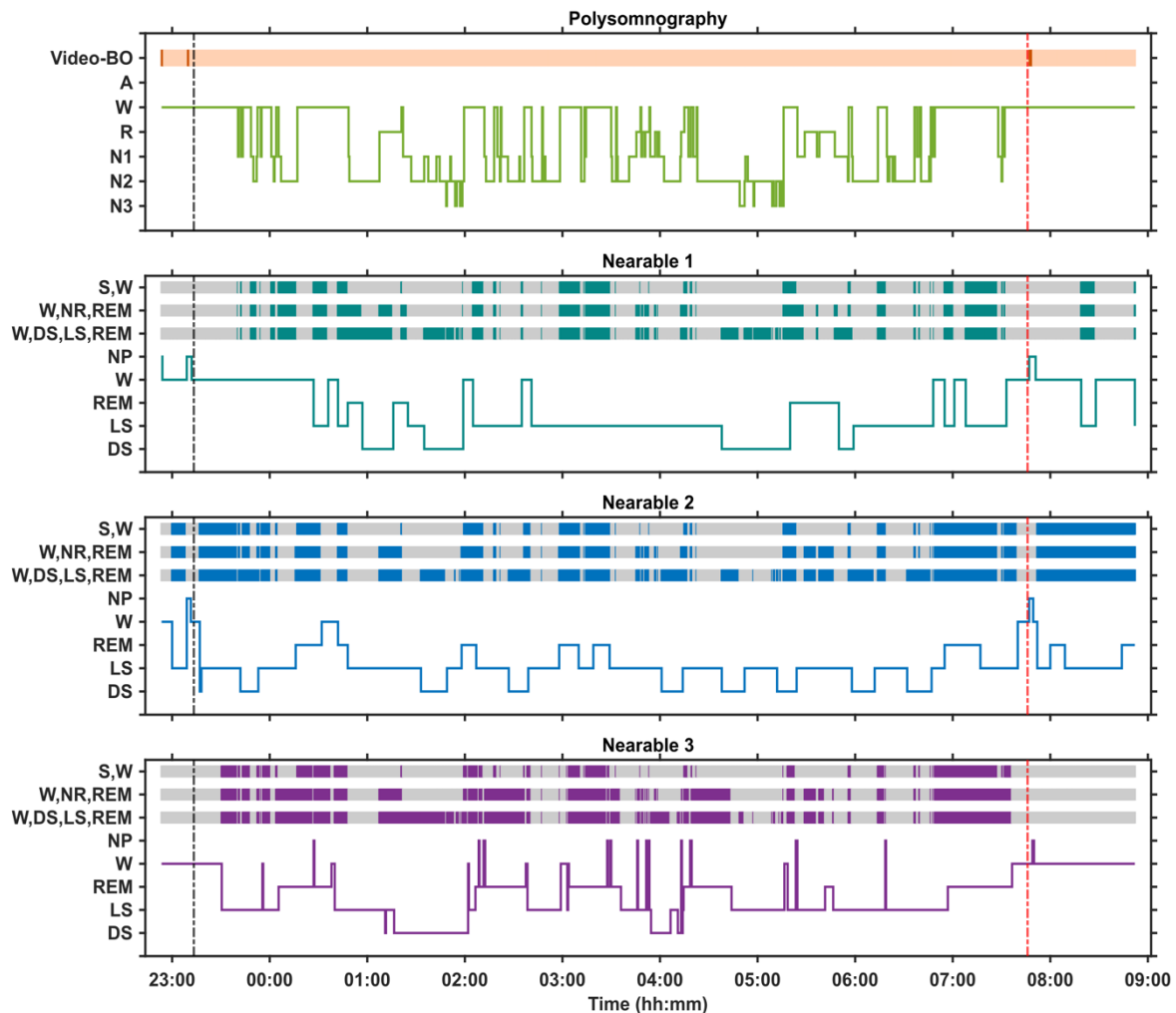


675  
676 **Figure 5.** Multiple days of at-home recording (days -14 to -1) and a single overnight  
677 laboratory session (day 0) in a male participant in their 60s. The grey bars represent when  
678 the participant is out of bed and the purple and green bars represent when the participant is  
679 in bed as detected by two different ‘under the mattress’ wearable devices (Nearable 1 and  
680 nearable 2, respectively). For Nearable 1, the light pink represents periods of wake, and the  
681 darker purple represents sleep; for Nearable 2, the light green represents periods of wake  
682 and the darker green represents sleep. The bed entry and bed exit times recorded on the



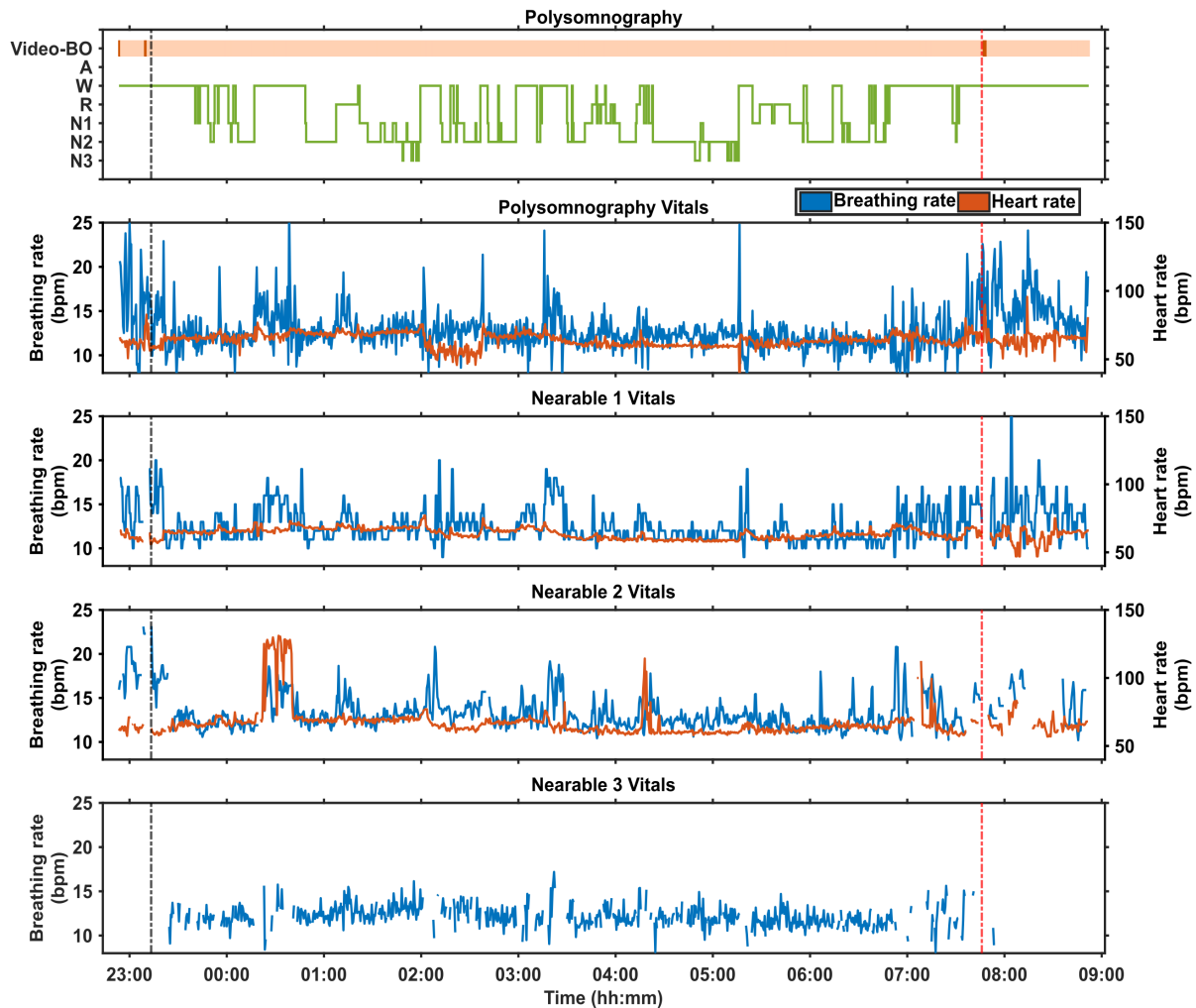
683 sleep diary are represented by inverted grey and pink triangles, respectively, and the black  
684 triangle indicates estimated sleep onset according to the sleep diary. The horizontal  
685 magenta lines represent nap times recorded on the sleep diary. The blue bars represent  
686 wrist worn actigraphy with dark blue indicating sleep and light blue representing wake.  
687 Figure 6 provides an example of data captured in the laboratory session where  
688 polysomnography was recorded for 10 hours with simultaneous use of three nearable  
689 devices. For each nearable, discrepancy between the device and manually scored PSG are  
690 indicated with darker coloured bands at three different levels of sleep stage classification: 1)  
691 wake vs sleep, 2) wake vs NREM vs REM, 3) wake vs deep sleep vs light sleep vs REM. For all  
692 three nearable devices it can be seen that as the resolution of the sleep staging increases so  
693 do the number of discordant epochs. Thus, while the nearable devices might be able to  
694 distinguish between wake and sleep, they cannot accurately distinguish between different  
695 stages of sleep.

696 Figure 7 provides an example of heart rate and breathing rate captured from PSG and three  
697 nearable devices from a single participant during a 10-hour period in bed in the laboratory.  
698 The pattern observed in the vital signs with Nearable 1 matches that detected by the gold  
699 standard PSG signals, whereas Nearable 2 records some spikes in heart rate that are not  
700 seen in the PSG or Nearable 1. Nearable 3 only records breathing rate, and the signal is  
701 consistent across the course of the night.



702

703 **Figure 6.** Hypnograms from a 10-hour in-bed period in a laboratory environment in a single  
704 participant with simultaneous polysomnography, including video, and three nearable  
705 devices. The black vertical dotted line depicts Lights Off and the red vertical dotted line  
706 depicts Lights On. The orange horizontal bar represents bed occupancy according to the  
707 video, with darker lines indicating when the participant left the bed. For each nearable, the  
708 discrepancy between the nearable and the PSG determined sleep is depicted at three  
709 different levels of sleep stage classification: 1) wake vs sleep, 2) wake vs NREM vs REM, 3)  
710 wake vs deep sleep vs light sleep vs REM. The darker coloured region indicates epochs of  
711 discrepancy. BO = bed occupancy, S = Sleep, W = wake, NR = NREM, NP = not present, REM  
712 = rapid eye movement sleep, LS = light sleep, DS = deep sleep.



713

714

**Figure 7.** Physiological measures during a 10-hour in-bed period in a laboratory

715

environment in a single participant with simultaneous recordings of polysomnography,

716

including video, and from three nearable devices. The black vertical dotted line depicts

717

Lights Off and the red vertical dotted line depicts Lights On. The orange horizontal bar

718

represents bed occupancy according to the video, with darker lines indicating when the

719

participant left the bed. For each nearable device, blue lines represent breathing rate and

720

red lines represent heart rate. Within the PSG hypnogram, BO = bed occupancy, A =

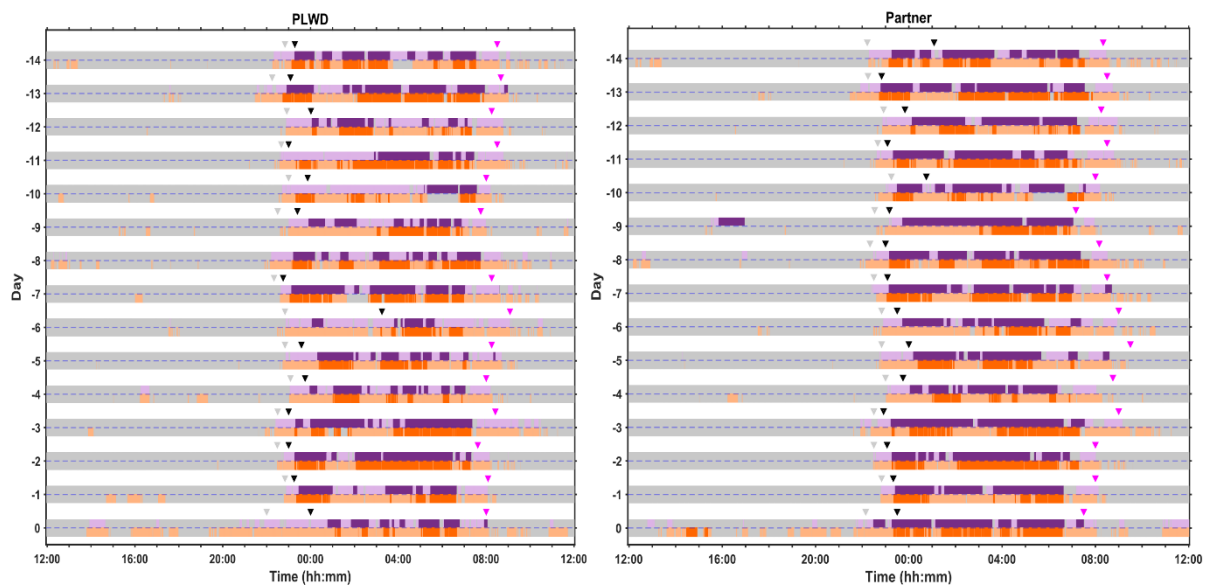
721

artefact, W = wake, R = REM sleep, N1 = stage 1 NREM sleep, N2 = stage 2 NREM sleep, N3 =

722

stage 3 NREM sleep.

723



724

725 **Figure 8.** Multiple days of at-home recording (days -14 to -1) and a single overnight

726 laboratory session (day 0) from a PLWD and their partner who share a bed. The grey bars

727 represent when the participant is out of bed and the purple and red bars represent when

728 the participant is in bed as detected by two different wearable devices (Nearable 1 and

729 Nearable 2, respectively). The purple bars represent an under-mattress sensor and the red

730 bars a bedside sensor; for both, the darker shading indicates sleep and the light shading

731 indicates wake. The bed entry and bed exit times recorded on the sleep diary are

732 represented by inverted grey and pink triangles, respectively, and the black triangle

733 indicates estimated sleep onset according to the sleep diary.

734 Figure 8 shows multiple consecutive days of recording in a woman living with dementia in

735 her 70s and her partner, a man in his 80s, who share a bed. The PLWD's sleep is fragmented

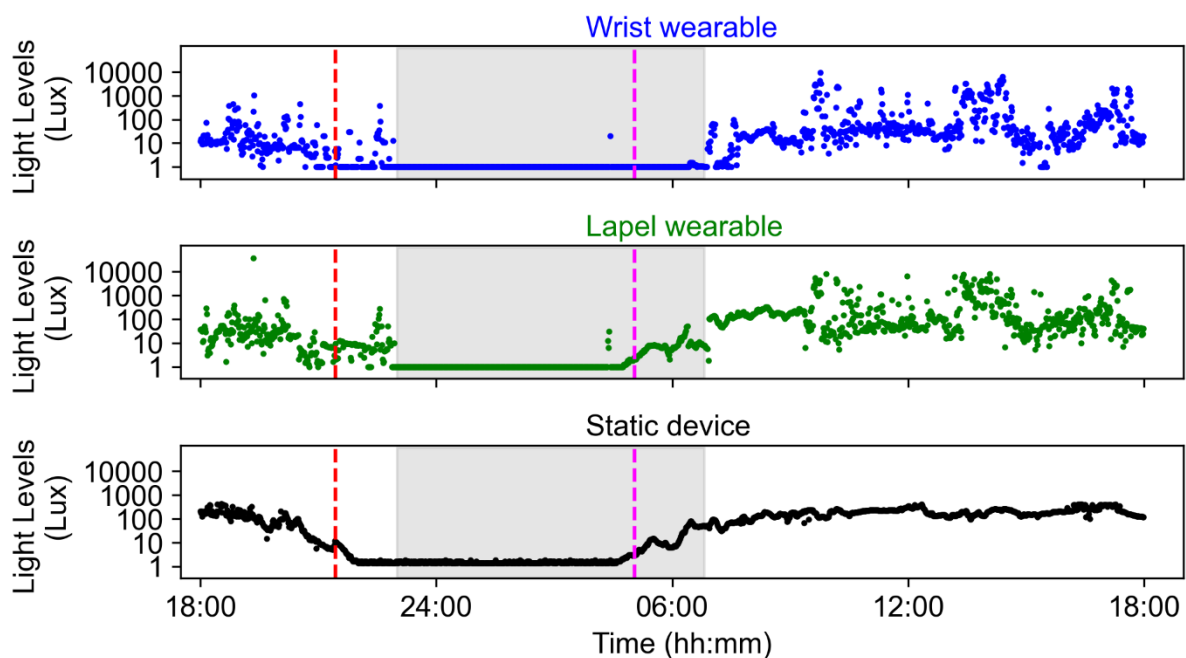
736 and varies from day to day in terms of duration and timing. The partner also experiences

737 nights of discontinuous sleep.

738 Figure 9 is an example of light exposure data for a 24-hour period for an individual from two

739 worn devices, as well as the light levels in the room in their house in which they spend the

740 majority of their time. For the 17 participants who wore both the actiwatch and HOB0, the  
741 was a significant correlation between the measured values by the two devices ( $r = 0.36$ ,  $p <$   
742  $0.001$ ). For this individual, their morning light exposure is up to 10,000 lux and exceeds the  
743 light levels in their home, suggesting they are outside. Their afternoon light exposure varies  
744 between 10 and 1000 lux but is generally lower than the light levels measured in their house  
745 suggesting they are indoors. Their evening light exposure is quite low and generally  $\leq 100$   
746 lux.  
747



748  
749 **Figure 9.** Light exposure data (plotted on a Log scale) measured over a 24-hour period for  
750 one participant using three devices: a wrist-worn wearable (blue), a collarbone/lapel worn  
751 wearable (green), and a static room device (black) (where the participant spends the  
752 majority of their time). Grey shaded areas indicate sleep periods reported in the sleep  
753 diary, the vertical red dashed line is sunset, and the vertical pink dashed line is sunrise.  
754

## 755 **Discussion**

756 We have described our successful approach for evaluating multiple, concurrent  
757 sleep/circadian monitoring technologies both at home and in the lab against accepted  
758 standard measures in older people and PLWD. This approach is rather different from  
759 published approaches in terms of the population enrolled, the number of devices evaluated  
760 simultaneously in one individual, the use of home and lab assessments, and the analysis  
761 interval used. Our high level of data completeness (95-98%) and participant retention (97%)  
762 is an indication of the success of our approach.

763         The majority of previous evaluation studies have taken the approach of either  
764 validating a single device against gold-standard or assessing multiple devices but not  
765 simultaneously in the same individual. For example, Chinoy and colleagues took a similar  
766 approach to us in simultaneously comparing seven consumer sleep tracking devices  
767 (wearable and contactless) in young participants at home and in the laboratory but  
768 participants only used a subset of the devices [48]. A strength of our design is that  
769 participants utilised multiple devices simultaneous to maximise evaluations and  
770 comparisons.

771 The predominant inclusion of young and healthy individuals in device evaluation studies  
772 limits the applications of the findings [48, 75-77]. In addition, only evaluating the  
773 performance of a device using self-selected lights off/on period when sleep efficiency is high  
774 means it is not possible to evaluate the ability of the device to discriminate quiet wake (e.g.,  
775 [75, 76]. Indeed, in a young healthy population, it was demonstrated that the performance  
776 of both wearable and contactless devices worsened on a night of sleep disruption compared  
777 to an undisturbed night in the laboratory [48].

778           The value of assessing the device in the population in which it will be used was  
779 highlighted by three recent studies. An assessment of the EMFIT-QS mattress sensor in  
780 participants from a sleep disorders centre with a BMI of  $33.8 \pm 8.3$  kg/m<sup>2</sup> (mean  $\pm$  SD; range  
781 21.4 - 46.6) revealed that this device overestimated TST and underestimated WASO [78].  
782 However, the authors noted that the performance actually worsened in those with a high  
783 apnoea-hypopnea index (AHI) and more fragmented sleep, but that estimations of TST  
784 actually improved in participants with increased weight and BMI suggesting that the device  
785 performs better with bigger movements from heavier individuals [78]. The Withings Sleep  
786 Mattress Analyser was assessed in participants with suspected sleep apnoea, and the device  
787 similarly overestimated sleep and underestimated wake but could accurately detect  
788 moderate to severe sleep apnoea (AHI was  $31.2 \pm 25$  and  $32.8 \pm 29.9$  with PSG and WSA,  
789 respectively) highlighting its diagnostic and monitoring value [79]. Finally, 293 cognitively  
790 normal and mildly impaired older adults were monitored for up to six nights at home using  
791 single channel EEG (scEEG), actigraphy and sleep diaries [80]. Estimates of TST showed the  
792 greatest agreement across the methods, particularly for cognitively intact adults, but the  
793 agreement between actigraphy and scEEG decreased in those with mild cognitive  
794 impairment and biomarker evidence of Alzheimer's Disease. Thus, it is crucial that the  
795 device is evaluated in a relevant population for its intended use.

796           The devices we are testing do have potential for long-term use in the home  
797 environment. The Withings Sleep Analyser has been deployed in PLWD where variation in  
798 in night-time behaviour and physiology was shown to relate to disease progression,  
799 comorbid illnesses and changes in medication [81].

800           The approach we describe here could be applied to evaluate the performance and  
801 acceptability of any novel sleep or circadian monitoring device in any population. To best

802 assess the device, it should be considered how the device would be used in the real-world  
803 and what information is most relevant e.g., bed occupancy, sleep structure, distribution of  
804 activity, light exposure. Our experimental design highlights the value of taking a multi-  
805 modal approach and assessing the performance of devices longitudinally at-home.  
806 Combining information from multiple devices can assist with interpreting sleep-wake  
807 behaviour as well as allowing their performance to be cross-validated. For example, the  
808 AWS provides information about activity levels but not about whether the participant is in  
809 bed; however, when the AWS data is viewed in conjunction with the Withings Mattress data  
810 it is possible to identify when the participant has left the bed rather than just being restless  
811 in the bed. This is particularly relevant to PLWD whose nocturnal wandering is a major  
812 reason for them to be moved from their home into a care home.

813           One challenge of the protocol was that many participants had not used smart  
814 technology previously and we required participants to complete a number of procedures  
815 independently which some PLWD were concerned about whether they would remember.  
816 Thorough training sessions, provision of comprehensive written instructions, the role of the  
817 study partner for PLWD, and frequent contact between researchers and participants  
818 ensured that they felt supported and able to carry out all study procedures.

819           In conclusion, we have developed a novel protocol that allows multiple  
820 sleep/circadian/environmental technologies to be assessed simultaneously in an individual  
821 both at-home and in the laboratory. Our approach was successful in terms of data quality,  
822 data completeness, and gaining an understanding of device acceptability. The protocol was  
823 conducted in both cognitively intact older adults and PLWD to provide a comprehensive  
824 picture of an individual's behaviour, physiology, and environment.

825



## 826 **Acknowledgements**

827 We thank Surrey Clinical Research Facility and Surrey and Borders Partnership Trust for  
828 support with recruitment and residential sessions and Daniel Barrett, Marta Messina, and  
829 Tegan Ward for their contribution to this work.

830

## 831 **References**

832

- 833 1. Patel SD, Davies A, Laing E, Wu H, Mendis J, Dijk DJ. Prognostication in Advanced  
834 Cancer by Combining Actigraphy-Derived Rest-Activity and Sleep Parameters with Routine  
835 Clinical Data: An Exploratory Machine Learning Study. *Cancers (Basel)*. 2023;15(2). Epub  
836 2023/01/22. doi: 10.3390/cancers15020503. PubMed PMID: 36672452; PubMed Central  
837 PMCID: PMCPMC9856985.
- 838 2. Mander BA, Dave A, Lui KK, Sprecher KE, Berisha D, Chappel-Farley MG, et al.  
839 Inflammation, tau pathology, and synaptic integrity associated with sleep spindles and  
840 memory prior to beta-amyloid positivity. *Sleep*. 2022;45(9). Epub 2022/06/08. doi:  
841 10.1093/sleep/zsac135. PubMed PMID: 35670275; PubMed Central PMCID:  
842 PMCPMC9758508.
- 843 3. Meyer N, Harvey AG, Lockley SW, Dijk DJ. Circadian rhythms and disorders of the  
844 timing of sleep. *Lancet*. 2022;400(10357):1061-78. Epub 2022/09/18. doi: 10.1016/S0140-  
845 6736(22)00877-7. PubMed PMID: 36115370.
- 846 4. Murray JM, Sletten TL, Magee M, Gordon C, Lovato N, Bartlett DJ, et al. Prevalence  
847 of Circadian Misalignment and Its Association With Depressive Symptoms in Delayed Sleep

- 848 Phase Disorder. *Sleep*. 2017;40(1). Epub 2017/04/02. doi: 10.1093/sleep/zsw002. PubMed  
849 PMID: 28364473.
- 850 5. Borbely AA. A two process model of sleep regulation. *Hum Neurobiol*. 1982;1(3):195-  
851 204. Epub 1982/01/01. PubMed PMID: 7185792.
- 852 6. Dijk DJ, Czeisler CA. Paradoxical timing of the circadian rhythm of sleep propensity  
853 serves to consolidate sleep and wakefulness in humans. *Neurosci Lett*. 1994;166(1):63-8.  
854 Epub 1994/01/17. doi: 10.1016/0304-3940(94)90841-9. PubMed PMID: 8190360.
- 855 7. Dijk DJ, Czeisler CA. Contribution of the circadian pacemaker and the sleep  
856 homeostat to sleep propensity, sleep structure, electroencephalographic slow waves, and  
857 sleep spindle activity in humans. *J Neurosci*. 1995;15(5 Pt 1):3526-38. Epub 1995/05/01.  
858 PubMed PMID: 7751928; PubMed Central PMCID: PMC6578184.
- 859 8. Dijk DJ, von Schantz M. Timing and consolidation of human sleep, wakefulness, and  
860 performance by a symphony of oscillators. *J Biol Rhythms*. 2005;20(4):279-90. Epub  
861 2005/08/04. doi: 10.1177/0748730405278292. PubMed PMID: 16077148.
- 862 9. Duffy JF, Wright KP, Jr. Entrainment of the human circadian system by light. *J Biol*  
863 *Rhythms*. 2005;20(4):326-38. Epub 2005/08/04. doi: 10.1177/0748730405277983. PubMed  
864 PMID: 16077152.
- 865 10. Vandewalle G, Maquet P, Dijk DJ. Light as a modulator of cognitive brain function.  
866 *Trends Cogn Sci*. 2009;13(10):429-38. Epub 2009/09/15. doi: 10.1016/j.tics.2009.07.004.  
867 PubMed PMID: 19748817.
- 868 11. Nedergaard M, Goldman SA. Glymphatic failure as a final common pathway to  
869 dementia. *Science*. 2020;370(6512):50-6. doi: 10.1126/science.abb8739. PubMed PMID:  
870 33004510; PubMed Central PMCID: PMC6578184.

- 871 12. Winsky-Sommerer R, de Oliveira P, Loomis S, Wafford K, Dijk DJ, Gilmour G.  
872 Disturbances of sleep quality, timing and structure and their relationship with other  
873 neuropsychiatric symptoms in Alzheimer's disease and schizophrenia: Insights from studies  
874 in patient populations and animal models. *Neurosci Biobehav Rev.* 2019;97:112-37. Epub  
875 20181009. doi: 10.1016/j.neubiorev.2018.09.027. PubMed PMID: 30312626.
- 876 13. Wang C, Holtzman DM. Bidirectional relationship between sleep and Alzheimer's  
877 disease: role of amyloid, tau, and other factors. *Neuropsychopharmacology.* 2020;45(1):104-  
878 20. Epub 20190813. doi: 10.1038/s41386-019-0478-5. PubMed PMID: 31408876; PubMed  
879 Central PMCID: PMC6879647.
- 880 14. Andre C, Champetier P, Rehel S, Kuhn E, Touron E, Ourry V, et al. Rapid Eye  
881 Movement Sleep, Neurodegeneration, and Amyloid Deposition in Aging. *Ann Neurol.*  
882 2023;93(5):979-90. Epub 2023/01/16. doi: 10.1002/ana.26604. PubMed PMID: 36641644.
- 883 15. Sani TP, Bond RL, Marshall CR, Hardy CJD, Russell LL, Moore KM, et al. Sleep  
884 symptoms in syndromes of frontotemporal dementia and Alzheimer's disease: A proof-of-  
885 principle behavioural study. *eNeurologicalSci.* 2019;17:100212. Epub 2019/12/13. doi:  
886 10.1016/j.ensci.2019.100212. PubMed PMID: 31828228; PubMed Central PMCID:  
887 PMC6889070.
- 888 16. Seda G, Matwiyoff G, Parrish JS. Effects of Obstructive Sleep Apnea and CPAP on  
889 Cognitive Function. *Curr Neurol Neurosci Rep.* 2021;21(7):32. Epub 2021/05/07. doi:  
890 10.1007/s11910-021-01123-0. PubMed PMID: 33956247.
- 891 17. Aini N, Chu H, Banda KJ, Chen R, Lee TY, Pien LC, et al. Prevalence of sleep-related  
892 breathing disorders and associated risk factors among people with dementia: A meta-  
893 analysis. *Sleep Med.* 2023;103:51-61. Epub 2023/02/10. doi: 10.1016/j.sleep.2023.01.020.  
894 PubMed PMID: 36758347.

- 895 18. Lin YQ, Chen SD. RBD: a red flag for cognitive impairment in Parkinson's disease?  
896 Sleep Med. 2018;44:38-44. Epub 2018/03/14. doi: 10.1016/j.sleep.2018.01.006. PubMed  
897 PMID: 29530367.
- 898 19. Liu Y, Song Y, Johnson FU, Lei L, Choi SE, Antonucci TC, et al. Characteristics and  
899 Predictors of Sleep Among Spousal Care Dyads Living With Chronic Conditions. J Gerontol B  
900 Psychol Sci Soc Sci. 2023;78(Suppl 1):S38-S47. Epub 2022/09/17. doi:  
901 10.1093/geronb/gbac096. PubMed PMID: 36112385; PubMed Central PMCID:  
902 PMCPMC10010479.
- 903 20. Van Hout E, Contreras M, Mioshi E, Kishita N. Examining the Impact of Different  
904 Components of Sleep Quality on Anxiety Among Family Carers of People with Dementia. J  
905 Geriatr Psychiatry Neurol. 2023;36(1):63-72. Epub 2022/04/20. doi:  
906 10.1177/08919887221093359. PubMed PMID: 35437043; PubMed Central PMCID:  
907 PMCPMC9755697.
- 908 21. Kim J, Cha E. Effect of Perceived Stress on Health-Related Quality of Life among  
909 Primary Caregiving Spouses of Patients with Severe Dementia: The Mediating Role of  
910 Depression and Sleep Quality. Int J Environ Res Public Health. 2022;19(13). Epub  
911 2022/07/10. doi: 10.3390/ijerph19137962. PubMed PMID: 35805619; PubMed Central  
912 PMCID: PMCPMC9265387.
- 913 22. Benca R, Herring WJ, Khandker R, Qureshi ZP. Burden of Insomnia and Sleep  
914 Disturbances and the Impact of Sleep Treatments in Patients with Probable or Possible  
915 Alzheimer's Disease: A Structured Literature Review. J Alzheimers Dis. 2022;86(1):83-109.  
916 Epub 2022/01/11. doi: 10.3233/JAD-215324. PubMed PMID: 35001893; PubMed Central  
917 PMCID: PMCPMC9028660.

- 918 23. Gibson RH, Gander PH, Jones LM. Understanding the sleep problems of people with  
919 dementia and their family caregivers. *Dementia (London)*. 2014;13(3):350-65. Epub  
920 2013/12/18. doi: 10.1177/1471301212473884. PubMed PMID: 24339061.
- 921 24. Lee DR, Thomas AJ. Sleep in dementia and caregiving--assessment and treatment  
922 implications: a review. *Int Psychogeriatr*. 2011;23(2):190-201. Epub 2010/10/16. doi:  
923 10.1017/S1041610210001894. PubMed PMID: 20946702.
- 924 25. Gibson AA, Gale J, Stamatakis E, Lindley RI, Fontana L, Cistulli PA, et al. Impact of  
925 lifestyle risk factors on admission to nursing home care: a cohort study of 127 108 people  
926 aged 60 years and over. *J Epidemiol Community Health*. 2023. Epub 2023/08/25. doi:  
927 10.1136/jech-2023-220518. PubMed PMID: 37620005.
- 928 26. Wong ATY, Reeves GK, Floud S. Total sleep duration and daytime napping in relation  
929 to dementia detection risk: Results from the Million Women Study. *Alzheimers Dement*.  
930 2023. Epub 2023/04/21. doi: 10.1002/alz.13009. PubMed PMID: 37083147.
- 931 27. Balouch S, Dijk DAD, Rusted J, Skene SS, Tabet N, Dijk DJ. Night-to-night variation in  
932 sleep associates with day-to-day variation in vigilance, cognition, memory, and behavioral  
933 problems in Alzheimer's disease. *Alzheimers Dement (Amst)*. 2022;14(1):e12303. Epub  
934 2022/05/24. doi: 10.1002/dad2.12303. PubMed PMID: 35603140; PubMed Central PMCID:  
935 PMCPMC9109375.
- 936 28. Berry R, BR GC, Harding S, Lloyd R, Marcus C, Vaughn B. The AASM Manual for the  
937 Scoring of Sleep and Associated Events: Rules, Terminology and Technical Specifications. The  
938 American Academy of Sleep Medicine. 2016.
- 939 29. Dijk DJ, Duffy JF. Novel Approaches for Assessing Circadian Rhythmicity in Humans: A  
940 Review. *J Biol Rhythms*. 2020;35(5):421-38. Epub 2020/07/24. doi:

- 941 10.1177/0748730420940483. PubMed PMID: 32700634; PubMed Central PMCID:  
942 PMCPMC7543025.
- 943 30. Sletten TL, Vincenzi S, Redman JR, Lockley SW, Rajaratnam SM. Timing of sleep and  
944 its relationship with the endogenous melatonin rhythm. *Front Neurol.* 2010;1:137. Epub  
945 2010/12/29. doi: 10.3389/fneur.2010.00137. PubMed PMID: 21188265; PubMed Central  
946 PMCID: PMCPMC3008942.
- 947 31. Burgess HJ, Wyatt JK, Park M, Fogg LF. Home Circadian Phase Assessments with  
948 Measures of Compliance Yield Accurate Dim Light Melatonin Onsets. *Sleep.* 2015;38(6):889-  
949 97. Epub 2014/11/20. doi: 10.5665/sleep.4734. PubMed PMID: 25409110; PubMed Central  
950 PMCID: PMCPMC4434555.
- 951 32. Lockley SW, Skene DJ, Arendt J, Tabandeh H, Bird AC, DeFrance R. Relationship  
952 between melatonin rhythms and visual loss in the blind. *J Clin Endocrinol Metab.*  
953 1997;82(11):3763-70. Epub 1997/11/14. doi: 10.1210/jcem.82.11.4355. PubMed PMID:  
954 9360538.
- 955 33. Lockley SW, Skene DJ, James K, Thapan K, Wright J, Arendt J. Melatonin  
956 administration can entrain the free-running circadian system of blind subjects. *J Endocrinol.*  
957 2000;164(1):R1-6. Epub 1999/12/23. doi: 10.1677/joe.0.164r001. PubMed PMID: 10607943.
- 958 34. Wulff K, Dijk DJ, Middleton B, Foster RG, Joyce EM. Sleep and circadian rhythm  
959 disruption in schizophrenia. *Br J Psychiatry.* 2012;200(4):308-16. Epub 2011/12/24. doi:  
960 10.1192/bjp.bp.111.096321. PubMed PMID: 22194182; PubMed Central PMCID:  
961 PMCPMC3317037.
- 962 35. Stone JE, McGlashan EM, Quin N, Skinner K, Stephenson JJ, Cain SW, et al. The Role  
963 of Light Sensitivity and Intrinsic Circadian Period in Predicting Individual Circadian Timing. *J*

- 964 Biol Rhythms. 2020;748730420962598. Epub 2020/10/17. doi: 10.1177/0748730420962598.
- 965 PubMed PMID: 33063595.
- 966 36. Skeldon AC, Dijk DJ, Meyer N, Wulff K. Extracting Circadian and Sleep Parameters  
967 from Longitudinal Data in Schizophrenia for the Design of Pragmatic Light Interventions.  
968 Schizophr Bull. 2022;48(2):447-56. Epub 2021/11/11. doi: 10.1093/schbul/sbab124.  
969 PubMed PMID: 34757401; PubMed Central PMCID: PMCPCMC8886588.
- 970 37. Menczel Schrire Z, Gordon CJ, Palmer JR, Murray J, Hickie I, Rogers NL, et al.  
971 Actigraphic and melatonin alignment in older adults with varying dementia risk. Chronobiol  
972 Int. 2023;40(2):91-102. Epub 2022/11/22. doi: 10.1080/07420528.2022.2144744. PubMed  
973 PMID: 36408793.
- 974 38. Li J, Vitiello MV, Gooneratne NS. Sleep in Normal Aging. Sleep Med Clin.  
975 2018;13(1):1-11. Epub 20171121. doi: 10.1016/j.jsmc.2017.09.001. PubMed PMID:  
976 29412976; PubMed Central PMCID: PMCPCMC5841578.
- 977 39. Mander BA, Winer JR, Walker MP. Sleep and Human Aging. Neuron. 2017;94(1):19-  
978 36. doi: 10.1016/j.neuron.2017.02.004. PubMed PMID: 28384471; PubMed Central PMCID:  
979 PMCPCMC5810920.
- 980 40. Kent BA, Casciola AA, Carlucci SK, Chen M, Stager S, Mirian MS, et al. Home EEG  
981 sleep assessment shows reduced slow-wave sleep in mild-moderate Alzheimer's disease.  
982 Alzheimers Dement (N Y). 2022;8(1):e12347. Epub 2022/08/23. doi: 10.1002/trc2.12347.  
983 PubMed PMID: 35992215; PubMed Central PMCID: PMCPCMC9381912.
- 984 41. Casagrande M, Forte G, Favieri F, Corbo I. Sleep Quality and Aging: A Systematic  
985 Review on Healthy Older People, Mild Cognitive Impairment and Alzheimer's Disease. Int J  
986 Environ Res Public Health. 2022;19(14). Epub 2022/07/28. doi: 10.3390/ijerph19148457.  
987 PubMed PMID: 35886309; PubMed Central PMCID: PMCPCMC9325170.

- 988 42. de Zambotti M, Menghini L, Grandner MA, Redline S, Zhang Y, Wallace ML, et al.  
989 Rigorous performance evaluation (previously, "validation") for informed use of new  
990 technologies for sleep health measurement. *Sleep Health*. 2022;8(3):263-9. Epub  
991 2022/05/07. doi: 10.1016/j.sleh.2022.02.006. PubMed PMID: 35513978; PubMed Central  
992 PMCID: PMCPMC9338437.
- 993 43. Green SF, Frame T, Banerjee LV, Gimson A, Blackman J, Morrison H, et al. A  
994 systematic review of the validity of non-invasive sleep-measuring devices in mid-to-late life  
995 adults: Future utility for Alzheimer's disease research. *Sleep Med Rev*. 2022;65:101665.  
996 Epub 2022/10/09. doi: 10.1016/j.smr.2022.101665. PubMed PMID: 36208588.
- 997 44. Duffy JF, Zitting KM, Chinoy ED. Aging and Circadian Rhythms. *Sleep Med Clin*.  
998 2015;10(4):423-34. Epub 2015/11/17. doi: 10.1016/j.jsmc.2015.08.002. PubMed PMID:  
999 26568120; PubMed Central PMCID: PMCPMC4648699.
- 1000 45. Charman WN. Age, lens transmittance, and the possible effects of light on melatonin  
1001 suppression. *Ophthalmic Physiol Opt*. 2003;23(2):181-7. Epub 2003/03/19. doi:  
1002 10.1046/j.1475-1313.2003.00105.x. PubMed PMID: 12641706.
- 1003 46. Ancoli-Israel S, Klauber MR, Jones DW, Kripke DF, Martin J, Mason W, et al.  
1004 Variations in circadian rhythms of activity, sleep, and light exposure related to dementia in  
1005 nursing-home patients. *Sleep*. 1997;20(1):18-23. Epub 1997/01/01. PubMed PMID:  
1006 9130329.
- 1007 47. Depner CM, Cheng PC, Devine JK, Khosla S, de Zambotti M, Robillard R, et al.  
1008 Wearable technologies for developing sleep and circadian biomarkers: a summary of  
1009 workshop discussions. *Sleep*. 2020;43(2). doi: 10.1093/sleep/zsz254. PubMed PMID:  
1010 31641776; PubMed Central PMCID: PMCPMC7368340.



- 1011 48. Chinoy ED, Cuellar JA, Huwa KE, Jameson JT, Watson CH, Bessman SC, et al.  
1012 Performance of seven consumer sleep-tracking devices compared with polysomnography.  
1013 Sleep. 2021;44(5). doi: 10.1093/sleep/zsaa291. PubMed PMID: 33378539; PubMed Central  
1014 PMCID: PMCPMC8120339.
- 1015 49. Marino M, Li Y, Rueschman MN, Winkelman JW, Ellenbogen JM, Solet JM, et al.  
1016 Measuring sleep: accuracy, sensitivity, and specificity of wrist actigraphy compared to  
1017 polysomnography. Sleep. 2013;36(11):1747-55. Epub 20131101. doi: 10.5665/sleep.3142.  
1018 PubMed PMID: 24179309; PubMed Central PMCID: PMCPMC3792393.
- 1019 50. Smith MT, McCrae CS, Cheung J, Martin JL, Harrod CG, Heald JL, et al. Use of  
1020 Actigraphy for the Evaluation of Sleep Disorders and Circadian Rhythm Sleep-Wake  
1021 Disorders: An American Academy of Sleep Medicine Systematic Review, Meta-Analysis, and  
1022 GRADE Assessment. J Clin Sleep Med. 2018;14(7):1209-30. Epub 20180715. doi:  
1023 10.5664/jcsm.7228. PubMed PMID: 29991438; PubMed Central PMCID: PMCPMC6040804.
- 1024 51. Ravindran GKK, della Monica C, Atzori G, Lambert D, Hassanin H, Revell V, et al.  
1025 Three Contactless Sleep Technologies Compared to Actigraphy and Polysomnography in a  
1026 Heterogenous Group of Older Men and Women in a Model of Mild Sleep Disturbance: A  
1027 Sleep Laboratory Study. JMIR mHealth and uHealth. 2023;25/08/2023:46338 -  
1028 (forthcoming/in press).
- 1029 52. Ravindran KKG, della Monica C, Atzori G, Lambert D, Hassanin H, Revell V, et al.  
1030 Contactless and Longitudinal Monitoring of Nocturnal Sleep and Daytime Naps in Older Men  
1031 and Women: A Digital Health Technology Evaluation Study. Sleep. 2023. Epub 2023/07/20.  
1032 doi: 10.1093/sleep/zsad194. PubMed PMID: 37471049.

- 1033 53. Molloy DW, Standish TI. A guide to the standardized Mini-Mental State Examination.  
1034 Int Psychogeriatr. 1997;9 Suppl 1:87-94; discussion 143-50. Epub 1997/01/01. doi:  
1035 10.1017/s1041610297004754. PubMed PMID: 9447431.
- 1036 54. Johns MW. A new method for measuring daytime sleepiness: the Epworth sleepiness  
1037 scale. Sleep. 1991;14(6):540-5. Epub 1991/12/01. doi: 10.1093/sleep/14.6.540. PubMed  
1038 PMID: 1798888.
- 1039 55. Buysse DJ, Reynolds CF, 3rd, Monk TH, Berman SR, Kupfer DJ. The Pittsburgh Sleep  
1040 Quality Index: a new instrument for psychiatric practice and research. Psychiatry Res.  
1041 1989;28(2):193-213. Epub 1989/05/01. doi: 10.1016/0165-1781(89)90047-4. PubMed PMID:  
1042 2748771.
- 1043 56. Lawton MP, Brody EM. Assessment of older people: self-maintaining and  
1044 instrumental activities of daily living. Gerontologist. 1969;9(3):179-86. Epub 1969/01/01.  
1045 PubMed PMID: 5349366.
- 1046 57. Avery K, Donovan J, Peters TJ, Shaw C, Gotoh M, Abrams P. ICIQ: a brief and robust  
1047 measure for evaluating the symptoms and impact of urinary incontinence. Neurourol  
1048 Urodyn. 2004;23(4):322-30. Epub 2004/07/01. doi: 10.1002/nau.20041. PubMed PMID:  
1049 15227649.
- 1050 58. Zigmond AS, Snaith RP. The hospital anxiety and depression scale. Acta Psychiatr  
1051 Scand. 1983;67(6):361-70. Epub 1983/06/01. doi: 10.1111/j.1600-0447.1983.tb09716.x.  
1052 PubMed PMID: 6880820.
- 1053 59. Logsdon RG, Gibbons LE, McCurry SM, Teri L. Assessing quality of life in older adults  
1054 with cognitive impairment. Psychosom Med. 2002;64(3):510-9. Epub 2002/05/22. doi:  
1055 10.1097/00006842-200205000-00016. PubMed PMID: 12021425.

- 1056 60. Nelson H, Willison J. National adult reading test (NART) manual. Windsor, Berkshire,  
1057 UK: NFER-Nelson. 1982.
- 1058 61. Netzer NC, Stoohs RA, Netzer CM, Clark K, Strohl KP. Using the Berlin Questionnaire  
1059 to identify patients at risk for the sleep apnea syndrome. *Ann Intern Med.* 1999;131(7):485-  
1060 91. Epub 1999/10/03. doi: 10.7326/0003-4819-131-7-199910050-00002. PubMed PMID:  
1061 10507956.
- 1062 62. Horne JA, Ostberg O. A self-assessment questionnaire to determine morningness-  
1063 eveningness in human circadian rhythms. *Int J Chronobiol.* 1976;4(2):97-110. Epub  
1064 1976/01/01. PubMed PMID: 1027738.
- 1065 63. Berry RB, Wagner MH. *Sleep medicine pearls* Elsevier Health Sciences; 2015.
- 1066 64. Carney CE, Buysse DJ, Ancoli-Israel S, Edinger JD, Krystal AD, Lichstein KL, et al. The  
1067 consensus sleep diary: standardizing prospective sleep self-monitoring. *Sleep.*  
1068 2012;35(2):287-302.
- 1069 65. Bannon A, Rapeaux A, Constandinou TG. Tiresias: A low-cost networked UWB radar  
1070 system for in-home monitoring of dementia patients. *Annu Int Conf IEEE Eng Med Biol Soc.*  
1071 2021;2021:7068-72. Epub 2021/12/12. doi: 10.1109/EMBC46164.2021.9630533. PubMed  
1072 PMID: 34892730.
- 1073 66. Malek-Ahmadi M, Su Y, Ghisays V, Luo J, Devadas V, Chen Y, et al. Plasma NfL is  
1074 associated with the APOE epsilon4 allele, brain imaging measurements of  
1075 neurodegeneration, and lower recall memory scores in cognitively unimpaired late-middle-  
1076 aged and older adults. *Alzheimers Res Ther.* 2023;15(1):74. Epub 2023/04/11. doi:  
1077 10.1186/s13195-023-01221-w. PubMed PMID: 37038190; PubMed Central PMCID:  
1078 PMC10084600.

- 1079 67. Mattsson-Carlgrén N, Salvado G, Ashton NJ, Tideman P, Stomrud E, Zetterberg H, et  
1080 al. Prediction of Longitudinal Cognitive Decline in Preclinical Alzheimer Disease Using Plasma  
1081 Biomarkers. *JAMA Neurol.* 2023;80(4):360-9. Epub 2023/02/07. doi:  
1082 10.1001/jamaneurol.2022.5272. PubMed PMID: 36745413.
- 1083 68. Blennow K, Galasko D, Perneczky R, Quevenço FC, van der Flier WM, Akinwonmi A,  
1084 et al. The potential clinical value of plasma biomarkers in Alzheimer's disease. *Alzheimers*  
1085 *Dement.* 2023. Epub 2023/09/11. doi: 10.1002/alz.13455. PubMed PMID: 37694991.
- 1086 69. Ding L, Chen B, Dai Y, Li Y. A meta-analysis of the first-night effect in healthy  
1087 individuals for the full age spectrum. *Sleep Med.* 2022;89:159-65. Epub 2022/01/09. doi:  
1088 10.1016/j.sleep.2021.12.007. PubMed PMID: 34998093.
- 1089 70. Martin JL, Hakim AD. Wrist actigraphy. *Chest.* 2011;139(6):1514-27. Epub  
1090 2011/06/10. doi: 10.1378/chest.10-1872. PubMed PMID: 21652563; PubMed Central  
1091 PMCID: PMC3109647.
- 1092 71. Menghini L, Cellini N, Goldstone A, Baker FC, de Zambotti M. A standardized  
1093 framework for testing the performance of sleep-tracking technology: step-by-step  
1094 guidelines and open-source code. *Sleep.* 2021;44(2). Epub 2020/09/04. doi:  
1095 10.1093/sleep/zsaa170. PubMed PMID: 32882005; PubMed Central PMCID:  
1096 PMCPMC7879416.
- 1097 72. Haghayegh S, Kang HA, Khoshnevis S, Smolensky MH, Diller KR. A comprehensive  
1098 guideline for Bland-Altman and intra class correlation calculations to properly compare two  
1099 methods of measurement and interpret findings. *Physiol Meas.* 2020;41(5):055012. Epub  
1100 2020/04/07. doi: 10.1088/1361-6579/ab86d6. PubMed PMID: 32252039.

- 1101 73. Chicco D, Warrens MJ, Jurman G. The Matthews Correlation Coefficient (MCC) is  
1102 More Informative Than Cohen's Kappa and Brier Score in Binary Classification Assessment.  
1103 IEEE Access. 2021;9:78368-81. doi: 10.1109/ACCESS.2021.3084050.
- 1104 74. Digital N. Mean body mass index (BMI) of adults in England 2021, by gender and age  
1105 (in kilograms per meters squared) [Graph].  
1106 [https://www.statista.com/statistics/375886/adult-s-body-mass-index-by-gender-and-age-](https://www.statista.com/statistics/375886/adult-s-body-mass-index-by-gender-and-age-in-england/2022)  
1107 [in-england/2022](https://www.statista.com/statistics/375886/adult-s-body-mass-index-by-gender-and-age-in-england/2022).
- 1108 75. Arnal PJ, Thorey V, Debellemanniere E, Ballard ME, Bou Hernandez A, Guillot A, et al.  
1109 The Dreem Headband compared to polysomnography for electroencephalographic signal  
1110 acquisition and sleep staging. Sleep. 2020;43(11). Epub 2020/05/21. doi:  
1111 10.1093/sleep/zsaa097. PubMed PMID: 32433768; PubMed Central PMCID:  
1112 PMCPMC7751170.
- 1113 76. Toften S, Pallesen S, Hrozanova M, Moen F, Gronli J. Validation of sleep stage  
1114 classification using non-contact radar technology and machine learning (Somnofy(R)). Sleep  
1115 Med. 2020;75:54-61. Epub 2020/08/28. doi: 10.1016/j.sleep.2020.02.022. PubMed PMID:  
1116 32853919.
- 1117 77. Chinoy ED, Cuellar JA, Jameson JT, Markwald RR. Performance of Four Commercial  
1118 Wearable Sleep-Tracking Devices Tested Under Unrestricted Conditions at Home in Healthy  
1119 Young Adults. Nat Sci Sleep. 2022;14:493-516. Epub 20220322. doi: 10.2147/NSS.S348795.  
1120 PubMed PMID: 35345630; PubMed Central PMCID: PMCPMC8957400.
- 1121 78. Kholghi M, Szollosi I, Hollamby M, Bradford D, Zhang Q. A validation study of a  
1122 ballistocardiograph sleep tracker against polysomnography. J Clin Sleep Med.  
1123 2022;18(4):1203-10. Epub 2021/10/28. doi: 10.5664/jcsm.9754. PubMed PMID: 34705630;  
1124 PubMed Central PMCID: PMCPMC8974370.

- 1125 79. Edouard P, Campo D, Bartet P, Yang RY, Bruyneel M, Roisman G, et al. Validation of  
1126 the Withings Sleep Analyzer, an under-the-mattress device for the detection of moderate-  
1127 severe sleep apnea syndrome. *J Clin Sleep Med*. 2021;17(6):1217-27. Epub 2021/02/17. doi:  
1128 10.5664/jcsm.9168. PubMed PMID: 33590821; PubMed Central PMCID: PMC8314651.
- 1129 80. Chou CA, Toedebusch CD, Redrick T, Freund D, McLeland JS, Morris JC, et al.  
1130 Comparison of single-channel EEG, actigraphy, and sleep diary in cognitively normal and  
1131 mildly impaired older adults. *Sleep Adv*. 2020;1(1):zpaa006. Epub 2021/03/02. doi:  
1132 10.1093/sleepadvances/zpaa006. PubMed PMID: 33644758; PubMed Central PMCID:  
1133 PMC87898727.
- 1134 81. Soreq E, Kolanko MA, della Monica C, Ravindran KKG, Revell VL, de Villèle P, et al.  
1135 Monitoring abnormal nocturnal behaviour in the homes of patients living with dementia.  
1136 *Alzheimer's & Dementia*. 2022;18:e067936.
- 1137