

1        **1. Title:**

2        Leadership and governance of mental healthcare and integration at the community level: a mixed  
3        methods study in Ghana

4

5        Peter Badimak Yaro<sup>1,#a\*</sup>, Emmanuel Asampong<sup>2¶</sup>, Philip Teg-Nefaah Tabong<sup>2&</sup>, Graham  
6        Thornicroft<sup>3&</sup>, Paulina Tindana<sup>1¶</sup>

7

8        <sup>1</sup>Department of Health Policy, Planning and Management, School of Public Health, Box LG 13,  
9        College of Health Sciences, University of Ghana, Legon, Accra

10       <sup>2</sup>Department of Social and Behavioural sciences, School of Public Health, BOX LG 13, College of  
11       Health Sciences, University of Ghana, Legon, Accra

12       <sup>3</sup>Health Service and Population Research Department, Institute of Psychiatry, King's College London,  
13       London. [graham.thornicroft@kcl.ac.uk](mailto:graham.thornicroft@kcl.ac.uk)

14       <sup>#a</sup>Current Address: BasicNeeds-Ghana, Box TL 1140, Tamale, Ghana

15       **\*Corresponding Author**

16       **E-mail:** [peter.yaro@basicneedsghana.org](mailto:peter.yaro@basicneedsghana.org); [bpyaro@st.ug.edu.gh](mailto:bpyaro@st.ug.edu.gh)

17       <sup>¶</sup>These authors contributed equally to this work.

18       <sup>&</sup>These authors also contributed equally to this work.

19 **Abstract**

20 Leadership and governance are key components of health systems, nevertheless research into  
21 leadership and governance of mental healthcare at the community level is probably the least well  
22 researched and understood part of these systems. As part of assessing the integration of mental health  
23 in Primary Health Care in Ghana, the leadership and governance organisation and structures to ensure  
24 oversight and coordination were examined. A concurrent mixed-methods design involving both  
25 quantitative and qualitative research methods approach was adopted. The quantitative data were  
26 collected through a questionnaire, which was either self-administered or interviewer administered, on  
27 1010 respondents with 830 completed (response rate 82%). Key informant interviews and focus group  
28 discussions were used to collect the qualitative data. Thematic content analysis with the use of NVivo  
29 12 was applied for the qualitative field data and Stata SE16 was used for quantitative data. Data  
30 triangulation strategy was used to report the qualitative and quantitative results. The study showed  
31 that leadership and governance of mental health at the PHC level were lowly developed due to the  
32 modest level of awareness of the Mental Health Law, inadequate functioning of mental health units  
33 and coordination, low level of private sector participation in mental health care services, and low  
34 levels of provision of monitoring, supervision, and evaluation. This affected the integration of mental  
35 health at the PHC level, which was also gauged as low. The study concludes that despite the presence  
36 of legislation and policy aiming to achieve decentralised and integrated mental health services at the  
37 PHC level, mental health care is still a low-level priority within the health care system in Ghana and  
38 tends to operate within a silo. The study recommends that more practical and concerted leadership of  
39 mental health at the regional and district levels is required to drive decentralisation and integration at  
40 these levels.

## 41 **Introduction**

42 Only a small proportion of people living with mental health conditions receive treatment despite the  
43 existence of effective public mental health interventions for the treatment of mental conditions,  
44 prevent associated impact and increase of mental health conditions, and promotion of mental health  
45 and wellbeing overall (1–3). The scale-up of mental health care and people-centred community-based  
46 mental health care service models are best achieved through integration into general healthcare at the  
47 Primary Health Care (PHC) level (4–6). Integration of mental healthcare into general healthcare at the  
48 Primary Health Care (PHC) level remains the core and singular global consensus to scaling-up mental  
49 healthcare and addressing the high treatment gap in resource limited settings, especially in Low- and  
50 Middle-Income Countries (LMICs) (Lund, Tomlinson and Patel, 2016; World Health Organization  
51 [WHO], 2016; Gwaikolo, Kohrt and Cooper, 2017).

52

53 Integration of mental health care within the general health care system in PHC is best appreciated  
54 within the context of the interaction of the components of the Health System Framework proposed by  
55 the WHO and further enhanced by the Ouagadougou Declaration on Primary Health Care and Health  
56 Systems in Africa (Member States of the African Region of WHO, 2008; WHO, 2007). The WHO  
57 Health System Framework is bringing together an interaction of the various building blocks that  
58 constitute a health system to be able to deliver health care services to meet the health needs of the  
59 population (12). The key building blocks of the health system include: (i) Leadership and Governance;  
60 (ii) health service delivery; (iii) health workforce/ health human resources; (iv) health information  
61 systems; (v) health products, vaccines and technologies; (vi) health financing; (vii) community  
62 ownership and participation; (viii) partnership for health development; and (ix) research for health  
63 (13).

64

65 In recent years, the growth in understanding and appreciation of the importance of mental health in  
66 population health and wellbeing has heightened the need to develop mental health systems to respond  
67 to the mental health care service needs (Gouda et al., 2019; WHO, 2019). Leadership and governance

68 are important components of the health system framework in the development and integration of  
69 mental health policy and services at the community level. They are considered the hub around which  
70 the various components of the health system framework revolve (13). The WHO succinctly sets out  
71 that leadership and governance involves ensuring the existence of a strategic policy framework which  
72 combines “effective oversight, coalition-building, regulation and attention to system-design and  
73 accountability” (16). It takes the interactions of three categories of stakeholders to determine the  
74 health system and its leadership/governance (17–19). These include the state, the healthcare service  
75 providers, and the citizens, particularly service users. ‘State’ covers the government Ministries,  
76 Departments and Agencies (MDAs) at the central and regional and local levels. ‘Healthcare service  
77 providers’ refer to public and private for profit and not-for-profit clinical providers, para-medical and  
78 non-medical healthcare providers, unions, and medical/ health professional associations, as well as  
79 networks of care or of services. The third category of stakeholders in the health system leadership and  
80 governance is the ‘citizens’, particularly population representatives such as user/patient associations,  
81 and Non-Governmental Organisations (NGOs) and Civil Society Organisations (CSOs).

82

83 Essential to effective leadership and governance for integrated mental health system are legislation,  
84 policies, and strategies for ensuring a coordination and oversight (20–22). Ghana’s mental health law,  
85 mental health policy, and strategic plan affirm the global understanding of what a health system  
86 thinking is (23–25). Key provisions of the Mental Health Law (Act 846; 2012) and the overall  
87 purpose and interpretation of the legislation emphasises decentralisation of mental healthcare services  
88 down to the community level, including the integration of mental healthcare services into general  
89 healthcare services at the PHC level. The expected decentralisation and integration of mental health  
90 care into general care at the community level in Ghana, remains rather limited in practice and far less  
91 successful overall (26,27).

92

93

94 Mental health care service provision in Ghana remains largely a silo in the healthcare delivery  
95 arrangements of the country, especially at the community level, perpetuating the disconnection,  
96 isolation, and discrimination of mental health in general health care services across the country (28).  
97 The bulk of resources for mental health care (financial, human and logistical/ medicines) go to the  
98 three psychiatric hospitals of Ghana, located in the southern-coastal regions, rather than the regional,  
99 district and lower levels of healthcare delivery which would serve a bigger population than the three  
100 psychiatric hospitals do. This situation has contributed to the low resourcing and investments in  
101 mental health at the lower levels of the healthcare system, and a generally low priority accorded  
102 mental health.

103

104 A most likely problem of such situation with mental health in Ghana could be leadership and  
105 governance inadequacies. Since the passage of the Mental Health Act (Act 846), in 2012, there has  
106 not been a critical examination and clarification of the roles and responsibilities of the Mental Health  
107 Authority (MHA) and the Ghana Health Service (GHS) in the coordination/ management structure,  
108 organization, and delivery of mental health care services outside of the psychiatric hospitals, for that  
109 matter at the Primary Health Care level. The MHA draws heavily from the Mental Health Act (846) to  
110 operate while the GHS substantially relies on the Public Service Act, 1996 (525) to deliver its  
111 mandate of providing health care services as a public service body (29,30). These two legally backed  
112 roles have somewhat affected the way and manner community mental health services are organized,  
113 managed, and delivered. The Mental Health Act, 2012 (846) was promulgated to address the years of  
114 neglect of the sub-sectors affecting the organisation of services and overall oversight and leadership in  
115 the country (31). A decade following the promulgation of this Act in Ghana and nearly eight years of  
116 the coming into being of the MHA operating along with the GHS, the intended structure and  
117 organization of mental health services outside of the psychiatric hospitals have remained blurred.  
118 Improving and sustaining community mental health is integral to overall health system strengthening  
119 efforts.

120

121 There is, therefore, the interest and need to examine the key dynamics and indicators that could  
122 promote integration of mental healthcare at the PHC level of the Ghana's healthcare system. The aim  
123 of this study was therefore to assess the leadership and governance structures put in place to ensure  
124 oversight, coordination, and general stewardship of mental healthcare at the PHC in Ghana.

## 125 **Materials and methods**

### 126 **Study Design**

127 This study adopted a concurrent triangulation mixed-methods design (32–36). It involved the use of  
128 both qualitative and quantitative approaches (37–39).

129

### 130 **Study area**

131 The study was conducted in the Republic of Ghana. Ghana is divided into sixteen regions (Figure 1)  
132 and three ecological zones (Northern, Middle, and Southern).

133

### 134 **Figure 1: Map of Ghana showing the study locations**

135

136 In terms of health service delivery, the country operates a five-tiered service system, including:  
137 National, Regional, District, Sub-district, and the Community (Ministry of Health, 2011; WHO, 2017).

138 The regional, district and community levels, health facilities are established to provide primary and  
139 secondary health care services (WHO, 2017). In 1999, Ghana adopted the Community-based Health

140 Planning and Services (CHPS) strategy as a primary health care system (43–46). In the CHPS strategy,

141 Community Health Officers (CHOs) are assigned to a demarcated CHPS zone(s) as a measure to ensure  
142 the close-to-client model of community health services in those demarcated zones (47,48).

143

### 144 **Study Population**

145 The study population included health policy officials, healthcare managers, healthcare service  
146 providers, persons with mental health conditions and primary caregivers of people with mental health  
147 conditions, civil society organizations, self-advocates, and mental health champions.

148

## 149 Sample Size Determination

150 The sample was calculated using Epi Info™ programme <https://www.cdc.gov/epiinfo/index.html>. The  
151 parameters considered were: (i) the size of the population, (ii) prevalence level, (iii) confidence level of  
152 95% and (iv) 5% accepted deviation from expected prevalence and (v) a non-respondent's rate of 5%.  
153 The combine population of the target districts was 956,597 (49). Based on the WHO prevalence rate of  
154 13% (50–53), an estimated 3,095,520 people are living with mental neurological and substance use  
155 disorders. The final sample 1010 realised was proportionally split among the target districts to reflect  
156 the differences in the populations of those locations.

157

158 For the qualitative arm of this study, Key Informant Interviews (KIIs, N=29) of 29 (9 female)  
159 respondents, and Focus Group Discussion (FGDs, N=12) involving 75 (40 female) respondents, were  
160 conducted (Table 1). After the interview, the interviewee summarized the key issues as a form of  
161 participant validation (54). It took between 45-60 minutes to complete an interview session. Both KII  
162 and FGDs ended at the point of saturation (55).

163

## 164 Sampling of Participants

165 Convenience sampling was used to select stakeholders who have a critical role to play in mental  
166 health and were available for data collection (Table 1). The selected individuals were based on initial  
167 desk review of available policies and laws on mental health in Ghana and literature in other countries.

168 **Table 1: Respondents of qualitative data collection**

Region	Method	Stakeholder respondent(s)								
		Mental Health User	Carer	Health Policy Official/ Health Manager	[Mental] Health Clinician/ Service Provider	Educators	Social Workers/ community volunteers	Mental Health Advocate/ Human Rights workers	Donor /Dev't partner	Total
Upper	KII	2 (1F)	2(1F)	1	1	0	0	0		6(2F)
East	FGD	2 (1F)	2(1F)	0	0	0	0	0		4(2F)
Region										
Northern	KII			1				1		2

Region	FGD								
Bono	KII	2 (1F)	2 (1F)	2	3(1F)	0	0	1	12(3F)
Region	FGD	2 (1F)	2 (1F)	2	1F				7(3F)
Ashanti	KII	2(1F)	1F		1				4(2F)
Region	FGD								
Greater	KII	1		2(1)				2(1)	5(2F)
Accra	FGD	1F							1F
Region									

169

170

### 171 **Data Collection Tool**

172 A questionnaire, which was self-administered or interviewer-administered, was used to collect the  
 173 quantitative data. The governance and leadership topic(s) that were explored covered the level of  
 174 implementation of legislations and policies on the development and integration of mental health into  
 175 Primary Health Care, presence of plans, mental health units and focal persons at the PHC, and  
 176 involvement of other health care staff in mental health services, private sector involvement, and  
 177 monitoring and evaluation of mental health care services and integration at the PHC. The qualitative  
 178 data covered the same topics as the questionnaire which allowed for in-depth exploration of the  
 179 questions.

180

### 181 **Data Collection Procedure**

182 Research assistants were recruited and trained to serve as interviewers to assist the majority of  
 183 respondents who could not self-complete the questionnaire. Informed consent was obtained for all  
 184 respondents. Administration of the questionnaires was between 18<sup>th</sup> August 2020 to 15<sup>th</sup> December  
 185 2020.

186

187 The investigators conducted all the KIIs and moderated the FGDs. Triangulation of information  
 188 collected from the data collected from the different data collection methods was done during analysis  
 189 to gain richer understanding of complex processes. The qualitative method adopted a critical  
 190 descriptive ethnography approach. Saturation was achieved when no new and additional information



191 could be obtained. The information was collected over six months between 17<sup>th</sup> August 2020 and 29<sup>th</sup>  
192 December 2020.

193

#### 194 **Analysis**

195 StataSE 16 (64-bit) was used to analyse the quantitative data. Descriptive statistical methods were  
196 employed to summarise the data into frequencies and percentage across various leadership and  
197 governance domains. The KIIs and FGDs were taped recorded, transcribed verbatim and coded using  
198 NVivo 12. The key indicators used during the analysis were: (i) the Mental Health Law and level of  
199 awareness at the community level; (ii) mental health policy and level of awareness at the community  
200 level; (iii) presence of a mental health plan at the district/ sub-district/ CHPS level and level of  
201 implementation; (iv) a mental health unit located at sub-district/ CHPS level; (v) coordinator or focal  
202 person(s) for mental health; (vi) involvement of healthcare staff in mental health service development;  
203 (vii) private sector participation in mental health service delivery; and (viii) monitoring and evaluation  
204 of mental health services.

205

206

#### 207 **Results**

208

209 A total of 830 study participants completed the survey from a convenience sample of 1010 (response  
210 rate of 82%), a majority of them female (56.6%).

211

212 By the categories of the survey respondents, a majority were health policy officials and implementers  
213 and healthcare service providers, 107 (41.5%), as well as mental health/ human rights advocates,  
214 development partners and donors, 54 (48.6%), had high level of awareness of mental health  
215 legislation. Awareness of mental health legislation among mental health service users and caregivers  
216 was partial with more than half of respondents, (270 [58.6%]), indicating so (Table 2a).

217

218 In both the KIIs and FGDs, it emerged that some stakeholders were unaware of the details of the  
219 Mental Health Law and level of implementation in the country. The following buttress these points:

220

221 *I was part of workshop where they told us about a new mental health law, but I really*  
222 *do not know the details of it or how it can help us. **KII, mental health service user***

223

224 *We were informed about the mental health law in a meeting that we were called to*  
225 *attend at Dapore-Tindongo [a section of Bolgatanga]. At that meeting we were made*  
226 *to understand that government has a responsibility to look after groups like ours in*  
227 *Bolga[tanga] here. That every person living with mental illness wherever located*  
228 *should be assisted by the government. The law requires of government as such. That*  
229 *is how the shared the information with us at the meeting that we attended. **FGD of***  
230 **mixed group of mental health service users and primary caregivers.**

231

232 402 (45.9%) respondents were of the view that the level of implementation of Ghana's mental health  
233 law at the PHC level was low with health policy officials being the largest proportion of respondents  
234 (148 (57.4%)) By geographical location of the study respondents, the level of implementation of the  
235 mental health law was low among respondents of northern Ghana, 118 (48.0%), and partial for  
236 respondents in mid Ghana, by 118 (43.2%), and southern Ghana, 160 (51.4%). Overall, the level of  
237 implementation of the mental health law was partial, 380 (45.8%), with 166 (20.0%) of the  
238 respondents indicating a high level of implementation (Table 2a).

239 **Table 2a: Study participants' views on mental health leadership and governance at the PHC level and perception of the level of**  
 240 **integration in Ghana**

Indicator	Leadership & Governance				Mental Health Service Users/ Caregivers/ families				Other (Mental Health/ Human Rights Advocates, Health Development Partners/ Donors)				Total			
	Health Policy Officials & Implementers / Healthcare Service providers															
	Integration – (No. (%))				Integration – (No. (%))				Integration – (No. (%))				Integration – (No. (%))			
	Yes/ Full/ High (≥75%)	Partial/ Average 50%- 74%	No/ Low/ None Exists (≤49%)	Total	Yes/ Full/ High (≥75%)	Partial/ Average 50%- 74%	No/ Low/ None Exists (≤49%)	Total	Yes/ Full/ High (≥75%)	Partial/ Average 50%- 74%	No/ Low/ None Exists (≤49%)	Total	Yes/ Full/ High (≥75%)	Partial/ Average 50%- 74%	No/ Low/ None Exists (≤49%)	Total
Mental health Law & level of awareness at the PHC level	107 (41.5)	55 (21.3)	96 (37.2)	<b>258</b> <b>(100)</b>	40 (8.7)	270 (58.6)	151 (82.8)	<b>461</b> <b>(100)</b>	54 (48.6)	30 (3.6)	27 (24.3)	<b>111</b> <b>(100)</b>	201 (24.2)	355 (42.8)	274 (33.0)	<b>830</b> <b>(100)</b>
Level of implementation of the mental health law	10 (3.9)	100 (38.8)	148 (57.4)	<b>258</b> <b>(100)</b>	103 (22.3)	141 (30.6)	217 (47.1)	<b>461</b> <b>(100)</b>	6 (5.4)	68 (61.3)	37 (33.3)	<b>111</b> <b>(100)</b>	119 (10.5)	309 (43.5)	402 (45.9)	<b>830</b> <b>(100)</b>
Mental health policy & level of awareness at the PHC level	20 (7.8)	150 (58.1)	88 (34.1)	<b>258</b> <b>(100)</b>	98 (21.3)	108 (23.4)	255 (55.3)	<b>461</b> <b>(100)</b>	10 (9.0)	83 (74.8)	18 (16.2)	<b>111</b> <b>(100)</b>	128 (12.7)	341 (52.1)	361 (35.2)	<b>830</b> <b>(100)</b>
Mental health plan at the PHC level	125 (48.4)	0 (0.0)	133 (51.6)	<b>258</b> <b>(100)</b>	163 (35.4)	0 (0.0)	298 (64.6)	<b>461</b> <b>(100)</b>	56 (50.5)	0 (0.0)	55 (49.5)	<b>111</b> <b>(100)</b>	344 (41.5)	N/A	486 (58.5)	<b>830</b> <b>(100)</b>
Mental health plan in place being implemented at PHC level	125 (48.4)	0 (0.0)	133 (51.6)	<b>258</b> <b>(100)</b>	163 (35.4)	0 (0.0)	298 (64.6)	<b>461</b> <b>(100)</b>	56 (50.5)	0 (0.0)	55 (49.5)	<b>111</b> <b>(100)</b>	344 (41.5)	N/A	486 (58.5)	<b>830</b> <b>(100)</b>
Mental health unit at the PHC level	240 (93.0)	0 (0.0)	18 (7.0)	<b>258</b> <b>(100)</b>	393 (85.2)	NA (0.0)	68 (14.8)	<b>461</b> <b>(100)</b>	54 (48.6)	0 (0.0)	57 (51.4)	<b>111</b> <b>(100)</b>	687 (82.8)	N/A	143 (17.2)	<b>830</b> <b>(100)</b>

241 **Source: Field survey data**

242 Results of the qualitative data indicate the level of implementation to be between partial and low:

243 *“Mental Health Act promoting community-based mental health services - It does*  
244 *promote. Very good. On paper it does promote. In practice, we need to get the*  
245 *structures called for by the Law and that is where I am saying that we need to get the*  
246 *district coordinators in place, which we haven't got in place yet. So, it leads to a certain*  
247 *gap. We have the regional coordinators they are there, and they are functioning very*  
248 *well, but the district coordinators need to be put in place”*. **KII, Health Policy Official**

249  
250 *“There is a mental health law and the NGOs working in mental health and the MHA*  
251 *have done a lot to publicise it, but the law is limited in its compliance with the UNCRPD*  
252 *provisions, particularly the aspect of involuntary treatment. It is at variance with the*  
253 *[UN] CRPD and not completely upholding human rights of people with mental health*  
254 *and psychosocial disabilities”*. **KII, mental health advocate.**

255  
256 More than half, (133 [51.6%]), of health policy officials and health service implementers category  
257 indicated that there was no mental health plan at the PHC level. Among the category of mental health  
258 service users and caregivers, 298 (64.6%) of them indicated there was no mental health plan in place  
259 and or being implemented at the PHC level. For mental health/ human rights advocates however, half  
260 of them, (56 [50.5%]), answered in the affirmative that a mental health plan was in place at the PHC  
261 level and being implemented. With regards to geographical location of the respondents, the  
262 respondents from all three zones were of the view that there was no mental health plan at the PHC  
263 level or implemented (Table 2b).

264

265 **Table 2b: Study participants' views on mental health leadership and governance at the PHC level and perception of the level of**  
 266 **integration in Ghana**

Indicator	Health Policy Officials & Implementers / Healthcare Service providers				Mental Health Service Users/ Caregivers/ families				Other (Mental Health/ Human Rights Advocates, Health Development Partners/ Donors)				Total			
	Integration – (No. (%)) Yes/ Full/ High (≥75%)	Partial/ Average 50%- 74%	No/ Low/ None Exists (≤49%)	Total	Integration – (No. (%)) Yes/ Full/ High (≥75%)	Partial/ Average 50%- 74%	No/ Low/ None Exists (≤49%)	Total	Integration – (No. (%)) Yes/ Full/ High (≥75%)	Partial/ Average 50%- 74%	No/ Low/ None Exists (≤49%)	Total	Integration – (No. (%)) Yes/ Full/ High (≥75%)	Partial/ Average 50%- 74%	No/ Low/ None Exists (≤49%)	Total
Coordinator/ Focal Person at the PHC level	230 (89.1)	0 (0.0)	28 (10.9)	<b>258</b> <b>(100)</b>	313 (67.9)	NA (0.0)	148 (32.1)	<b>461</b> <b>(100)</b>	40 (36.0)	0 (0.0)	71 (64.0)	<b>111</b> <b>(100)</b>	583 (70.2)	N/A	247 (29.8)	<b>830</b> <b>(100)</b>
Involvement of health staff in mental health service development at the PHC level	20 (7.8)	115 (44.6)	123 (47.7)	<b>258</b> <b>(100)</b>	9 (2.0)	234 (50.8)	218 (47.3)	<b>461</b> <b>(100)</b>	7 (6.3)	40 (4.8)	64 (57.7)	<b>111</b> <b>(100)</b>	36 (4.3)	389 (46.9)	405 (48.8)	<b>830</b> <b>(100)</b>
Private sector participation at the PHC	120 (46.5)	0 (0.0)	138 (53.5)	<b>258</b> <b>(100)</b>	106 (23.0)	0 (0.0)	355 (77.0)	<b>461</b> <b>(100)</b>	35 (31.5)	0 (0.0)	76 (68.5)	<b>111</b> <b>(100)</b>	261 (31.4)	N/A	569 (68.6)	<b>830</b> <b>(100)</b>
Monitoring & Evaluation of mental healthcare services at the PHC level	135 (52.3)	0 (0.0)	123 (47.7)	<b>258</b> <b>(100)</b>	95 (20.0)	0 (0.0)	366 (79.4)	<b>461</b> <b>(100)</b>	50 (45.0)	0 (0.0)	61 (55.0)	<b>111</b> <b>(100)</b>	280 (33.7)	N/A	550 (66.3)	<b>830</b> <b>(100)</b>
Perception of extent of integration of mental health services at the at the PHC level (overall)	87 (31.7)	34 (13.2)	137 (53.1)	<b>258</b> <b>(31.1)</b>	188 (40.8)	58 (12.6)	215 (46.6)	<b>461</b> <b>(55.5)</b>	45 (40.5)	12 (10.8)	54 (48.7)	<b>111</b> <b>(13.4)</b>	320 (38.6)	137 (16.5)	406 (48.9)	<b>830</b> <b>(100)</b>
Mental health Law & level of awareness at the PHC level	30 (12.2)	98 (39.8)	118 (48.0)	<b>246</b> <b>(100)</b>	54 (19.8)	98 (35.9)	121 (44.3)	<b>273</b> <b>(100)</b>	125 (40.2)	150 (48.2)	36 (11.6)	<b>311</b> <b>(100)</b>	209 (25.2)	346 (41.7)	275 (33.1)	<b>830</b> <b>(100)</b>

267 Source: Field survey data

268 Qualitative data collected, however, suggested that beyond the weekly and month plan of activities  
269 that some of the mental health workers draw to work with, there is no annual or strategic plan in place  
270 to guide the delivery of mental healthcare services at the district and lower levels of the healthcare  
271 system of Ghana.

272

273 *We don't have plans. Plan of activities depends on finances and since we do not have,*  
274 *we just do the bit we can – some consultations in the hospital for those come and*  
275 *occasional home visits. We only developed plans when NGOs like BasicNeeds [-*  
276 *Ghana] come to help us or the Mental Health Authority, if they get funding from*  
277 *DFID and channel some to us to work with. **FGD, CPNs/CMHOs, UER.***

278

279 The presence of a unit for mental health care at the PHC level is an important indication of a sense of  
280 structure and leadership of mental healthcare at that level. Along with interest in knowing if mental  
281 health units are present at the PHC, the study also sought to confirm if there was a designated  
282 coordinator for mental healthcare at that level. Majority of the respondents answered in the  
283 affirmative by 687 (82.8%) for the presence of a mental health unit and 583 (70.3%) for presence of a  
284 coordinator or focal person for mental health at the PHC level.

285

286 Most respondents were health policy officials and health service implementers, 240 (93.0%) for  
287 presence of a mental health unit, and 230 (89.1%) for presence of a mental health coordinator or focal  
288 person. Similar responses were provided by mental health service users and caregivers, by 393  
289 (85.2%) for presence of a mental health unit and 313 (67.9%) for presence of a focal person (Table  
290 3a).

291

292 **Table 3a: Study participants' views on mental health leadership and governance at the PHC level and perception of the level of**  
 293 **integration in Ghana by location**

Health System Block	Leadership & Governance															
	Northern Ghana Integration				Mid-Ghana Integration				Southern Coastal Integration				Total Integration			
Indicator	Yes/ Full/ High (≥75%)	Partial/ Average 50%-74%	No/ Low/ None (≤49%)	Total	Yes/ Full/ High (≥75%)	Partial/ Average 50%-74%	No/ Low/ None (≤49%)	Total	Yes/ Full/ High (≥75%)	Partial/ Average 50%-74%	No/ Low/ None (≤49%)	Total	Yes/ Full/ High (≥75%)	Partial/ Average 50%-74%	No/ Low/ None (≤49%)	Total
Level of implementation of the mental health law	26 (10.6)	102 (41.5)	118 (48.0)	<b>246 (100)</b>	50 (18.3)	118 (43.2)	105 (38.5)	<b>273 (100)</b>	90 (28.9)	160 (51.4)	61 (19.6)	<b>311 (100)</b>	166 (20.0)	380 (45.8)	284 (34.2)	<b>830 (100)</b>
Mental health policy & level of awareness at the PHC level	20 (8.1)	100 (40.7)	126 (51.2)	<b>246 (100)</b>	48 (17.6)	122 (44.7)	103 (37.7)	<b>273 (100)</b>	118 (37.9)	126 (40.5)	67 (21.5)	<b>311 (100)</b>	186 (22.4)	348 (41.9)	296 (35.7)	<b>830 (100)</b>
Mental health plan at the PHC level	40 (16.3)	NA (0.0)	206 (83.7)	<b>246 (100)</b>	101 (37.0)	NA (0.0)	172 (63.0)	<b>273 (100)</b>	119 (38.3)	NA (0.0)	192 (61.7)	<b>311 (100)</b>	260 (31.3)	348 (41.9)	296 (35.7)	<b>830 (100)</b>
Mental health plan in place being implemented at PHC level	40 (16.3)	NA (0.0)	206 (83.7)	<b>246 (100)</b>	98 (35.9)	NA (0.0)	172 (63.0)	<b>273 (100)</b>	107 (34.4)	NA (0.0)	204 (65.6)	<b>311 (100)</b>	245 (29.5)	NA (0.0)	585 (70.5)	<b>830 (100)</b>
Mental health unit at the PHC level	148 (60.2)	NA (0.0)	98 (39.8)	<b>246 (100)</b>	177 (64.8)	NA (0.0)	96 (35.2)	<b>273 (100)</b>	285 (91.6)	NA (0.0)	26 (8.4)	<b>311 (100)</b>	610 (73.9)	NA (0.0)	220 (26.5)	<b>830 (100)</b>

294 **Field survey data**

295 However, the difference in percentage of responses indicating the presence of a mental health unit  
296 with that for presence of a mental health coordinator/ focal persons could be an indication of units that  
297 have no personnel heading or manning them.

298

299 Geographically, affirmative responses to the presence of mental health units and mental health  
300 coordinators at the PHC level were lower for respondents in northern Ghana, 148 (60.2%), higher in  
301 mid Ghana, 179 (65.6%), and highest in, 287 (92.3%), for respondents located in southern Ghana.

302 Responses of the qualitative data collected conveyed mixed views as below:

303

304 *At least there is a CMHO in the majority of districts of Ghana but not below. The*  
305 *challenge is the tools and resources for them to work with. I mean funds, logistics like*  
306 *motorbikes, proper offices, and furniture. If these are provided, we can go to the sub-*  
307 *districts and into the hinterlands to provide services. **KII, regional mental health***  
308 **coordinator**

309

310 *We do not have a unit in our clinic, we have to go to the mental health unit at the*  
311 *regional hospital. **FGD, Service users and caregivers.***

312

313 *“You are right that I am a DDNS [Deputy Director of Nursing Services]., but I am*  
314 *not one of the Deputy Directors of the Regional Director of Health Services. I am*  
315 *under the DDCC [Deputy Director of Clinical Care]. So, I don’t sit at the level to be*  
316 *able to champion mental health. I think the DDCC does his best but mental health*  
317 *will not be his priority. That is what I mean by ‘if your mother is not in the kitchen,*  
318 *you will always be hungry” **KII, regional mental health coordinator.***

319

320 Absence of representation at the highest level at the regional and national levels of the GHS could be  
321 attributed to the low priority placed on mental health. With regards level of involvement of health  
322 staff at the PHC level of the healthcare system in mental health service development, a majority of the



323 three categories of survey respondents, 405 (48.8%) were of the view that involvement of healthcare  
324 staff was low, followed by 389 (46.9%) who answered that there was a partial level of involvement of  
325 health staff in mental health service development and delivery at the PHC level. Just 36 (4.3%)  
326 answered that there was a high level of involvement of health staff in mental healthcare development.

327

328 Mental health and human rights advocates, development partners and donors were the majority, 64  
329 (57.7%), who indicated that there was a low level of involvement of health staff in mental healthcare  
330 service development at the PHC level. Health policy officials and health service implementers, on one  
331 hand and mental health service users and caregivers, on the other, respectively, by 123 (47.7%) and  
332 218 (47.3%) expressed that there was low involvement of other health staff in the development of  
333 mental health service development in Ghana.

334

335 By geographical location, all three zones gauged level of involvement of other health staff in mental  
336 healthcare service delivery and integration as low (low, 332 (40.0%) or partial, 300 (36.1%)), with -  
337 northern Ghana being the majority, 111 (45.1%), then mid Ghana, 107 (39.2%) and southern Ghana,  
338 114 (36.7%). Qualitative data corroborate the survey results as the quote below convey:

339

340 *Unless you are working in mental health, healthcare workers are not interested in*  
341 *mental health matters. There is fear and social stigma. It is only the CPNs*  
342 *[Community Psychiatric Nurses] and the CMHOs [Community Mental Health*  
343 *Officers] who do everything. A negligible number are really interested and involved.*

344 **KII, District Director of Health Services**

345

346 The study found that private sector participation in the development and delivery of mental healthcare  
347 services at the PHC level was low. Private sector participation referred to private clinics and hospitals  
348 providing mental healthcare services. Overall, 569 (48.8%) viewed private sector participation in  
349 mental, 76 (68.5%), category of mental health and human right advocates, development partners and  
350 donors. Health policy officials and health service implementers (138 [53.5%]) held the same view.

351 For respondents who answered in the affirmative, their reference was the presence of traditional and  
352 faith-based healers who are highly patronised by people with mental healthcare needs.

353

354 The results of the data analysed by geographical location of the respondents had similar results as the  
355 respondent category (Table 3b).

356

357 **Table 3b: Study participants' views on mental health leadership and governance at the PHC level and perception of the level of**  
 358 **integration in Ghana by location**

Health System Block	Leadership and Governance															
	Northern Ghana				Mid Ghana				Southern Ghana				Total			
Indicator	Integration			Total	Integration			Total	Integration			Total	Integration			Total
	Yes/ Full/ High (≥75%)	Partial/ Average 50%- 74%	No/ Low/ None Exists (≤49%)		Yes/ Full/ High (≥75%)	Partial/ Average 50%- 74%	No/ Low/ None Exists (≤49%)		Yes/ Full/ High (≥75%)	Partial/ Average 50%- 74%	No/ Low/ None Exists (≤49%)		Yes/ Full/ High (≥75%)	Partial/ Average 50%- 74%	No/ Low/ None Exists (≤49%)	
Coordinator/ Focal Person at the PHC level	148 (60.2)	NA (0.0)	98 (39.8)	<b>246</b> <b>(100)</b>	179 (65.6)	NA (0.0)	94 (34.4)	<b>273</b> <b>(100)</b>	287 (92.3)	NA (0.0)	24 (7.7)	<b>311</b> <b>(100)</b>	614 (74.0)	NA (0.0)	216 (26.0)	<b>830</b> <b>(100)</b>
Involvement of health staff in mental health service development at the PHC level	34 (13.8)	101 (41.1)	111 (45.1)	<b>246</b> <b>(100)</b>	67 (24.5)	99 (36.3)	107 (39.2)	<b>273</b> <b>(100)</b>	97 (31.2)	100 (32.2)	114 (36.7)	<b>311</b> <b>(100)</b>	198 (23.9)	300 (36.1)	332 (40.0)	<b>830</b> <b>(100)</b>
Private sector participation at the PHC	48 (19.5)	92 (37.4)	106 (43.1)	<b>246</b> <b>(100)</b>	71 (26.4)	40 (14.7)	161 (59.0)	<b>273</b> <b>(100)</b>	109 (35.0)	112 (36.0)	90 (28.9)	<b>311</b> <b>(100)</b>	229 (27.6)	244 (29.4)	357 (43.0)	<b>830</b> <b>(100)</b>
Monitoring & Evaluation of mental healthcare services at the PHC level	31 (12.6)	92 (37.4)	106 (43.1)	<b>246</b> <b>(100)</b>	64 (23.4)	69 (25.3)	140 (51.3)	<b>273</b> <b>(100)</b>	91 (29.3)	112 (36.0)	90 (28.9)	<b>311</b> <b>(100)</b>	186 (22.4)	228 (27.5)	416 (50.1)	<b>830</b> <b>(100)</b>
Perception of extent of integration of mental health services at the at the PHC level (overall)	97 (39.4)	40 (16.3)	109 (44.3)	<b>246</b> <b>(29.6)</b>	42 (15.4)	30 (11.0)	201 (73.6)	<b>273</b> <b>(32.9)</b>	182 (58.5)	20 (6.4)	109 (35.1)	<b>311</b> <b>(37.5)</b>	321 (38.7)	90 (10.8)	419 (50.5)	<b>830</b> <b>(100)</b>

359 **Field survey data**

360 Qualitative data analysed corroborate results of the survey, conveyed in the quotes below:

361

362 *The services provided by the traditional healers makes me say that there is private*  
363 *sector participation in mental healthcare service delivery in Ghana. There are also a*  
364 *number of the psychiatrists and churches with rehabilitation centres that I have come*  
365 *to be aware of. **KII, Mental health policy official***

366

367 *For us here, it is only the psychiatry unit that is at the regional hospital. We have*  
368 *many private hospitals and maternity homes, but none offer mental healthcare*  
369 *services. It is only at the government hospitals that mental healthcare services are*  
370 *provided. **FGD, Mental health service users***

371

372 Monitoring and evaluation form an important aspect of healthcare stewardship. In this study,  
373 Monitoring and Evaluation of mental healthcare services at the PHC level was assessed to help  
374 appreciate leadership and governance of mental healthcare at the community level. Majority of all  
375 the three categories of survey respondents combined, 550 (66.3%), were of the view that monitoring  
376 and evaluation of mental health care at the PHC level was low. The highest percentage of survey  
377 respondents who viewed mental healthcare monitoring and evaluation at the PHC level to be low was  
378 the category of mental health service users and caregivers, 366 (79.4%), followed by mental health /  
379 human rights advocates, development partners and donors, 61 (55.0%) and finally, health policy  
380 officials and health care service providers/ implementers, 123 (47.7%).

381

382 By the geographical location of the survey respondents, overall, more than half of them, 416 (50.1%)  
383 held the view that monitoring and evaluation at the PHC level was not in place. Only respondents  
384 located in southern Ghana, 106 (43.1%), who viewed monitoring and evaluation at the PHC level to  
385 be partial. Qualitative data, as per the quote below, lends credence to the results of the survey:

386

387 *It was once that staff of the Mental Health Authority at the headquarters and the*  
388 *directors of the Institutional Care Division (ICD) of the Ghana Health Service*  
389 *undertook supportive supervision but that was just to the regional hospital. Also,*  
390 *once a while the Regional Mental Health Coordinator comes around but that is far*  
391 *and in-between. FGD, CPNs/CHMOs*

392  
393 *Mental health is not considered in matters at this level. supportive supervisions take*  
394 *place, but mental health is not included. We are just sitting and watching. They may*  
395 *include you, but it is not because of mental health but that you an available staff. KII,*  
396 **CPN**

397  
398 An overall analysis of the selected leadership and governance indicators which defines stewardship  
399 indicate that mental health leadership and governance at the PHC level is low, by 45.2% (375), among  
400 the three categories of respondents, and 42.8% (355) by the geographical location of the respondents.

401  
402 *Leadership is evident when the district director is interested in what is happening with*  
403 *the mental health aspects of his district. Without this level of involvement, we should*  
404 *forget discussing leadership and governance at the district and lower levels. KII,*  
405 **Mental Health Advocate**

406  
407 Geographically, respondents in northern Ghana were the highest proportion of respondents, 135  
408 (55.0%) indicating leadership and governance for mental healthcare at the PHC level was low, followed  
409 by respondents of mid Ghana, 127 (46.7%) and then respondents of southern Ghana, 92 (29.7%).

410  
411 *Mental health remains an afterthought and is excluded so leadership and governance*  
412 *is remote, not there. It needs to be consciously crafted and health directors*  
413 *accountable. KII, National Health Policy*

414

415 *It is sometimes confusing. You do not know where you belong, who you should be*  
416 *reporting to. So, to be save you report to the [District] Director and then copy the*  
417 *regional mental health coordinator. There hardly any coordination, monitoring or*  
418 *supervision. FGD, CPNs and CMHOs*

419

420 Despite these, there remained significant proportion of respondents who viewed the level of stewardship  
421 to be in place by 256 (30.8%) and partial by 199 (24.0%).

422 *We cannot say there is no leadership and governance of mental health in place at the*  
423 *Primary Care level. Increasingly, directors are taking an interest and through that the*  
424 *situation will improve. KII, Regional Director of Health Services*

425

426

## 427 **Discussions**

428 This study was conducted to assess the leadership and governance structures put in place to ensure  
429 oversight, coordination, and general stewardship of mental healthcare at the Primary Health Care  
430 (PHC) in Ghana. Overall, leadership and governance of mental healthcare at the district and lower  
431 levels of the healthcare system of Ghana was average. Just about half of the study respondents were  
432 aware of the mental health law and policy and similarly of the view that the level of implementation  
433 was partial. Although mental health units and coordinators or focal points for mental health were  
434 present in the facilities, their level of involvement in the planning and implementation of healthcare  
435 services was minimal, creating mental health silos.

436

437 Level of awareness of mental health legislation was affected by the broader social determinants of  
438 mental health which was demonstrated in the socio-demographic characteristics of the respondents,  
439 particularly geographical locations. The study found that respondents from the northern zone had the  
440 lowest level of awareness of mental health law and policy while those from the southern-coastal had  
441 the highest level. Challenges with realising the full implementation of the mental health Law (and  
442 policy) have been traced to key leadership and governance militating against the development of

443 mental healthcare services in Ghana (56,57). The findings from this current study are consistent with  
444 these studies and found that leadership and governance of mental health care at the community level  
445 in Ghana remains low.

446

447 In comparison to respondents with similar characteristics who were not members of Self-Help peer  
448 support Groups (SHGs) that non-governmental organisations such as Basic Needs Ghana support,  
449 mental health service users, primary caregivers of people with mental health conditions, and mental  
450 health advocates showed a better understanding of current mental-health related policies and  
451 legislation. This is a result of the empowerment programs, which are undertaken to increase the  
452 participation of those who need mental healthcare services and their carers.

453

454 This study found that awareness of mental health laws and policies was only average, indicating that  
455 more needs to be done to raise awareness of them, especially among consumers of mental health  
456 services, primary caregivers, and other healthcare professionals. Additionally, focal persons find it  
457 difficult to understand who is responsible for what under the existing institutional arrangements,  
458 which contributes to the apparent inefficiencies. Units are siloed, and district focal persons are both  
459 reporting to Mental Health Authority and Ghana Health Service despite the fact that they are at  
460 district-level health facilities.

461 Ghana needs to acknowledge and give priority to the role that mental health plays in the burden of  
462 disease, including infectious and non-communicable diseases. This role calls for creative solutions  
463 and long-term investments in the core building blocks of the health system framework.

464 Appropriate policies and legislations are key requirements of the health system framework and Ghana  
465 has a mental health law that was passed in 2012 (58) as well as a mental health policy that was  
466 launched in 2021 (MoH, 2018). This notwithstanding, Policies and laws alone are insufficient. A  
467 national initiative for mental health that is supported by resources, particularly finance, is required. An  
468 understanding of the social factors that affect mental health, which take into account regional

469 disparities and associated socioeconomic factors, is necessary for a national mental health  
470 programme.

471 The study revealed that private sector participation was low and when it was identified to exist, it  
472 was in reference to the activities of traditional and spiritual healers. This is an indication that the  
473 importance of mental health is being recognized gradually but steadily, with the need for  
474 decentralized mental healthcare that is incorporated into general healthcare at the PHC level being the  
475 best and most obvious solution. This generally average level of awareness. This generally average  
476 level of awareness suggests that more work needs to be done in order to fully execute the provisions  
477 of the mental health law and policy, not only make them known. As an organogram, the primary care  
478 level of mental healthcare is generally well established, with the exception of varying service  
479 coverage and quality, which are caused by a lack of adequately trained human resources, logistical  
480 support, and cross-sectoral linkages. Knowing about the mental health law is one thing, but it is more  
481 crucial to know that it is being put into practice. This suggests that increased stakeholder participation  
482 in healthcare-related policy debates and legislation is necessary.

483

484 In order to achieve the mental health targets that are a part of realizing Universal Health Coverage  
485 (UHC) goals and targets, Ghana's political leadership and healthcare policy authorities must prioritize  
486 mental health due to the country's participation in the Sustainable Development Goals (SDGs). The  
487 "epidemiological transition" that many low(-er) and middle-income nations are going through, where  
488 mental illness is becoming more prominent and needs to be addressed, is undoubtedly happening in  
489 Ghana. The Minister of Health needs to make a strong case to get the President and Cabinet aware of  
490 the urgency of addressing the nation's mental health problems through a thorough implementation of  
491 current policies and laws supported by funding to expand access to mental healthcare. A presidential  
492 initiative on mental health might help the existing plan to build 111 hospitals in Ghana, including two  
493 psychiatric facilities.

494

495 Increase awareness of and commitment to implementing existing mental healthcare policy and  
496 legislations. Much as this study revealed an appreciably high awareness of existing healthcare policies



497 and legislations, particularly the Mental Health Law, a significant proportion (over 30%) of the  
498 population is not aware of those legislations and policies. Coupled with the high levels of stigma and  
499 poor attitudes and practices towards mental health and people with mental neurological and substance  
500 use illnesses, there is the need to sustain and increase awareness of the legislations and policies.  
501 Health policy makers and community healthcare providers do not generally understand or agree with  
502 the inclusion of mental health dimensions on each of the existing healthcare-related policies and  
503 legislations on healthcare services, relating to human resources, medicines, and medical products,  
504 CHPS, traditional healers, and health insurance and financing. Due to this, mental healthcare is not  
505 taken into account in these laws and regulations.

506

507 Similar to this, Ghana's current mental health law and policy are not well understood by healthcare  
508 professionals and policymakers who do not work directly in the mental health sub-sector. As a result,  
509 the level of attention and responsibility that these individuals should have to support and ensure  
510 integration of mental health into general healthcare, especially at the community level, is  
511 compromised.. Knowledge and awareness play vital roles in the actual implementation of the  
512 provisions and requirements of healthcare policies and legislations. The Ghana Health Service and the  
513 Ghana Mental Health Authority must lead in getting their staff and agencies to be well informed and  
514 apply policies and legislations, as required. The GHS and MHA should collaborate actively with  
515 NGOs/CBOs, especially mental health service-user-led and caregiver associations in the  
516 dissemination of policies and legislations and their implementation. The stakeholders involved should  
517 consider producing abridged easy-to-read versions of the various healthcare and mental healthcare  
518 policies and legislations for wider circulation and dissemination. Inservice-Training (INSET) for  
519 healthcare workers and civil society organisations will help increase and imbue into the cross-section  
520 of stakeholders and boost advocacy for the implementation and eventual integration of mental health  
521 into general healthcare at the primary care level.

522

523

524 **Conclusions**

525 The building blocks of the health systems framework, individually and as a collective, constitute a  
526 suitable approach to addressing inadequacies in the development and integration of mental healthcare  
527 at the lower levels of the healthcare system in Ghana. Leadership and governance are essential to  
528 mental health policy and service development for which they should guide the building of community  
529 mental health care system across the country. If the Government of Ghana is to achieve UHC then  
530 there must be leadership at the highest level beyond the current efforts of NGOs/CSOs and  
531 psychiatrists and psychiatrists, psychiatric nurses, clinical psychologists, and other allied healthcare  
532 workers. Such governmental level focus needs to be publicly demonstrated by the ministries of health  
533 and finance with a financing and investment mechanism for community mental health.

534

535 **Acknowledgement**

536 The authors wish to acknowledge Prof. Patricia Akweongo and Dr Benedict Weobong for their  
537 support and advice to the lead author (Peter Badimak Yaro) in his doctoral studies.

538

539

## 540 References

- 541 1. Abayneh S, Lempp H, Alem A, Alemayehu D, Eshetu T, Lund C, et al. Service user  
542 involvement in mental health system strengthening in a rural African setting: qualitative study.  
543 BMC Psychiatry. 2017;17.
- 544 2. Faregh N, Lencucha R, Ventevogel P, Dubale BW, Kirmayer LJ. Considering culture, context  
545 and community in mhGAP implementation and training: Challenges and recommendations  
546 from the field. International Journal of Mental Health Systems. 2019;13(1):1–13.
- 547 3. Thornicroft G, Chatterji S, Evans-Lacko S, Gruber M, Sampson N, Aguilar-Gaxiola S, et al.  
548 Undertreatment of people with major depressive disorder in 21 countries. British Journal of  
549 Psychiatry. 2017;210(2):119–24.
- 550 4. Dorsey S, Gray CL, Wasonga AI, Amany C, Weiner BJ, Belden CM, et al. Advancing  
551 successful implementation of task-shifted mental health care in low-resource settings  
552 (BASIC): Protocol for a stepped wedge cluster randomized trial. BMC Psychiatry.  
553 2020;20(1):1–14.
- 554 5. Eaton J, Gureje O, De Silva M, Sheikh TL, Ekpe EE, Abdulaziz M, et al. A structured  
555 approach to integrating mental health services into primary care: Development of the Mental  
556 Health Scale Up Nigeria intervention (mhSUN). International Journal of Mental Health  
557 Systems. 2018;12(1):1–12.
- 558 6. Agyepong IA, Sewankambo N, Binagwaho A, Coll-Seck AM, Corrah T, Ezeh A, et al. The  
559 path to longer and healthier lives for all Africans by 2030: the Lancet Commission on the  
560 future of health in sub-Saharan Africa. The Lancet. 2017;390(10114):2803–59.
- 561 7. Gwaikolo WS, Kohrt BA, Cooper JL. Health system preparedness for integration of mental  
562 health services in rural Liberia. BMC Health Services Research. 2017;17(1):1–10.
- 563 8. World Health Organization. mhGAP Intervention Guide Mental Health Gap Action  
564 Programme Version 2.0 for mental, neurological and substance use disorders in non-  
565 specialized health settings. World Health Organization. 2016;2:1–173.
- 566 9. Lund C, Tomlinson M, Patel V. Integration of mental health into primary care in low-and  
567 middle-income countries: The PRIME mental healthcare plans. British Journal of Psychiatry.  
568 2016;208:s1–3.
- 569 10. World Health Organisation (WHO). Everybody’s business: strengthening health systems to  
570 improve health outcomes: WHO’s framework for Action. WHO Production Services, Geneva,  
571 Switzerland; 2007. 1–56 p.
- 572 11. Member States of the African Region of World Health Organization. The Ouagadougou  
573 declaration on primary health care and health systems in Africa: achieving better health for  
574 Africa in the new millennium. Brazzaville: WHO Production Services, Geneva, Switzerland;  
575 2008. p. 1–3.
- 576 12. Fekadu A, Hanlon C, Medhin G, Alem A, Selamu M, Giorgis TW, et al. Development of a  
577 scalable mental healthcare plan for a rural district in Ethiopia. British Journal of Psychiatry.  
578 2016;208:s4–12.
- 579 13. WHO. Monitoring the Building Blocks of Health Systems: a Handbook of Indicators and their  
580 measurement strategies. Geneva: WHO Document Production Services; 2010. 110 p.

- 581 14. Gouda HN, Charlson F, Sorsdahl K, Ahmadzada S, Ferrari AJ, Erskine H, et al. Burden of  
582 non-communicable diseases in sub-Saharan Africa, 1990–2017: results from the Global  
583 Burden of Disease Study 2017. *The Lancet Global Health*. 2019;7(10):e1375–87.
- 584 15. World Health Organisation. The WHO special initiative for Mental Health (2019-2023) -  
585 Universal Coverage for Mental Health. Geneva: WHO; 2019. p. 1–4.
- 586 16. WHO. WHO Press. 2022. Health system governance.
- 587 17. Upadhaya N, Jordans MJD, Pokhrel R, Gurung D, Adhikari RP, Petersen I, et al. Current  
588 situations and future directions for mental health system governance in Nepal: findings from a  
589 qualitative study. *International Journal of Mental Health Systems*. 2017;11:37.
- 590 18. USAID. What is health system strengthening? 2021.
- 591 19. WHO. WHO Press. 2022. Health system governance.
- 592 20. Schneider H, Zulu JM, Mathias K, Cloete K, Hurtig AK. The governance of local health  
593 systems in the era of Sustainable Development Goals: reflections on collaborative action to  
594 address complex health needs in four country contexts Analysis. *BMJ Global Health*.  
595 2019;4:1645.
- 596 21. Hanlon C, Eshetu T, Alemayehu D, Fekadu A, Semrau M, Thornicroft G, et al. Health system  
597 governance to support scale up of mental health care in Ethiopia: a qualitative study.  
598 *International Journal of Mental Health Systems*. 2017;11:38.
- 599 22. Buckle G. Realities of leadership and governance in health. 2017 p. 3–39.
- 600 23. Republic of Ghana. Ghana Mental Health Act 2012. 2012. p. 44.
- 601 24. Walker GH, Osei A. Mental health law in Ghana. 2017;14(2):38–9.
- 602 25. Ministry of Health of Ghana. Mental health policy 2019-2030 - Ensuring a mentally health  
603 population. Accra, Ghana: Ministry of Health; 2018. 1–90 p.
- 604 26. Esponda GM, Hartman S, Qureshi O, Sadler EE, Cohen A, Kakuma R, et al. Barriers and  
605 facilitators of mental health programmes in primary care in low-income and middle-income  
606 countries. *Lancet Psychiatry*. 2019;1–15.
- 607 27. Hanlon C, Luitel NP, Kathree T, Murhar V, Shrivasta S, Medhin G, et al. Challenges and  
608 opportunities for implementing integrated mental health care: a district level situation analysis  
609 from five low- and middle-income countries. *PLOS One*. 2014;9(2):1–12.
- 610 28. Opong S, Kretchy IA, Imbeah EP, Afrane BA. Managing mental illness in Ghana: The state  
611 of commonly prescribed psychotropic medicines. *International Journal of Mental Health  
612 Systems*. 2016;10(1):1–10.
- 613 29. The Parliament of the Republic of Ghana. Ghana Mental Health Act, 2012 (ACT 846). 846  
614 Ghana: Assembly Press, Accra; 2012 p. 1–44.
- 615 30. Parliament of the Republic of a Ghana. Ghana Health Service and Teaching Hospitals  
616 (Amendment) Act, 2019 Bill. Ghana; 2019.
- 617 31. Badu E, O’Brien AP, Mitchell R. An integrative review of potential enablers and barriers to  
618 accessing mental health services in Ghana. Vol. 16, *Health Research Policy and Systems*.  
619 *Health Research Policy and Systems*; 2018. p. 1–19.

- 620 32. Creswell JW. Research design: Qualitative, Quantitative, and Mixed Methods Approaches.  
621 Third. Intercultural Education. Los Angeles: Sage Publications, Inc. 2455 Teller Road, CA:  
622 Thousand Oaks, CA; 2013. 1–249 p.
- 623 33. Creswell JW. Research design: Qualitative, Quantitative and Mixed Methods Approaches. 4th  
624 ed. Vol. 66, Sage Publications, Inc. Los Angeles; 2014. 37–39 p.
- 625 34. Creswell JW. Revisiting mixed methods and advancing scientific practices. In: Hesse-Biber  
626 SN, Johnson RB, editors. The Oxford handbook of multi-method and mixed methods research  
627 inquiry. Oxford, England: Oxford University Press; 2015. p. 57–71.
- 628 35. Creswell JW, Creswell JD. Research design: qualitative, quantitative, and mixed methods  
629 approaches. Fifth. Los Angeles: SAGE; 2018. 1–275 p.
- 630 36. Georgia State University Library. Research guides: Mixed Methods. 2022.
- 631 37. Palinkas LA, Horwitz SM, Green CA, Wisdom JP, Duan N, Hoagwood K, et al. Purposeful  
632 sampling for qualitative data collection and analysis in mixed method implementation  
633 research. *Adm Policy Ment Health*. 2015;42(5):533–44.
- 634 38. Palaganas EC, Sanchez MC, Molintas VP, Caricativo RD. Reflexivity in Qualitative Research:  
635 A Journey of Learning. *Qualitative Report*. 2017;22(2):426–38.
- 636 39. Ye Z, Yang X, Zeng C, Wang Y, Shen Z, Li X, et al. Resilience, Social Support, and Coping  
637 as Mediators between COVID-19-related Stressful Experiences and Acute Stress Disorder  
638 among College Students in China. *Applied Psychology: Health and Well-Being*. 2020;
- 639 40. Ministry of Health. Ministry of Health Ghana Independent Review Health Sector Programme  
640 of Work 2010 Ghana. Accra, Ghana; 2011.
- 641 41. World Health Organization. Primary Health Care Systems (PRIMASYS) Case study from  
642 Ghana Abridged Version. World Health Organization. Geneva: WHO; 2017. p. 1–48.
- 643 42. World Health Organization. Primary Health Care Systems (PRIMASYS) Case study from  
644 Ghana Abridged Version. World Health Organization. Geneva: WHO; 2017. p. 1–48.
- 645 43. Nyongato FK, Awoonor-Williams JK, Phillips JF, Jones TC, Miller RA. The Ghana  
646 Community-based Health Planning and Services Initiative for scaling up service delivery  
647 innovation. Vol. 20, *Health Policy and Planning*. 2005. p. 25–34.
- 648 44. Binka FN, Aikins M, Sackey SO, Aryeetey R, Dzodzomenyo M, Esena R, et al. In-depth  
649 review of the Community-Based Health Planning Services (CHPS) Programme. Accra, Ghana;  
650 2009.
- 651 45. Kweku M, Amu H, Awolu A, Adjuik M, Ayanore MA, Manu E, et al. Community-based  
652 health planning and services plus programme in Ghana: A qualitative study with stakeholders  
653 in two Systems Learning Districts on improving the implementation of primary health care.  
654 *PLoS ONE*. 2020;15(1):1–24.
- 655 46. Abboah-Offei M, Gyasi Darkwa A, Ayim A, Ansa-Ofei AM, Dovlo D, Awoonor-Williams  
656 JK, et al. Adapting the Community-based Health Planning and Services (CHPS) to engage  
657 poor urban communities in Ghana: Protocol for a participatory action research study. *BMJ  
658 Open*. 2021;11(7):1–9.
- 659 47. Awoonor-Williams JK, Bawah AA, Nyongato FK, Rofina A, Oduro A, Ofosu A, et al. The  
660 Ghana essential health interventions program: a plausibility trial of the impact of health

- 661 systems strengthening on maternal & child survival. BMC Health Services Research.  
662 2013;13(Suppl 2):S3.
- 663 48. Abboah-Offei M, Gyasi Darkwa A, Ayim A, Ansah-Ofei AM, Dovlo D, Awoonor-Williams  
664 JK, et al. Adapting the Community-based Health Planning and Services (CHPS) to engage  
665 poor urban communities in Ghana: Protocol for a participatory action research study. BMJ  
666 Open. 2021;11(7):1–9.
- 667 49. City Population. Ghana: Administrative Divisions. 2020.
- 668 50. WHO. WHO | Mental disorders. World Health Organization; 2018.
- 669 51. National Academies of Sciences Engineering and Medicine. Providing Sustainable Mental and  
670 Neurological Health Care in Ghana and Kenya: Workshop Summary. Washington, DC:  
671 National Academies Press. Washington DC: The National Academies Press; 2016.
- 672 52. Ohene S. Mental healthcare in Ghana. In: National Academies of Sciences Engineering and  
673 Medicine, editor. Providing Sustainable Mental and Neurological Care in Ghana and Kenya:  
674 Workshop Summary. Washington DC: National Academies Press; 2016. p. 33–49.
- 675 53. Ritchie H, Roser M. Ritchie\_Roser\_2018\_Mental Health\_OurWorldInData. Oxford, England:  
676 Oxford Martin School, University of Oxford; 2018.
- 677 54. Birt L, Scott S, Cavers D, Campbell C, Walter F. Member Checking: A Tool to Enhance  
678 Trustworthiness or Merely a Nod to Validation? Qualitative Health Research.  
679 2016;26(13):1802–11.
- 680 55. Bowling A. Research Methods in Health: Investigating Health and Health Service. 4th Ed.  
681 England: Open University Press; 2014.
- 682 56. Doku VCK, Wusu-Takyi A, Awakame J. Implementing the mental health Act in Ghana: any  
683 challenges ahead? Ghana Medical Journal. 2012;46(4):241–50.
- 684 57. Adu-Gyamfi S. Mental Health Service in Ghana: A Review of the Case. International Journal  
685 of Public Health Science (IJPHS). 2017;6(4):299.
- 686 58. Walker GH, Osei A. Mental health law in Ghana. 2017;14(2):38–9.
- 687 59. Ministry of Health of Ghana. Mental health policy 2019-2030 - Ensuring a mentally health  
688 population. Accra, Ghana: Ministry of Health; 2018. 1–90 p.
- 689

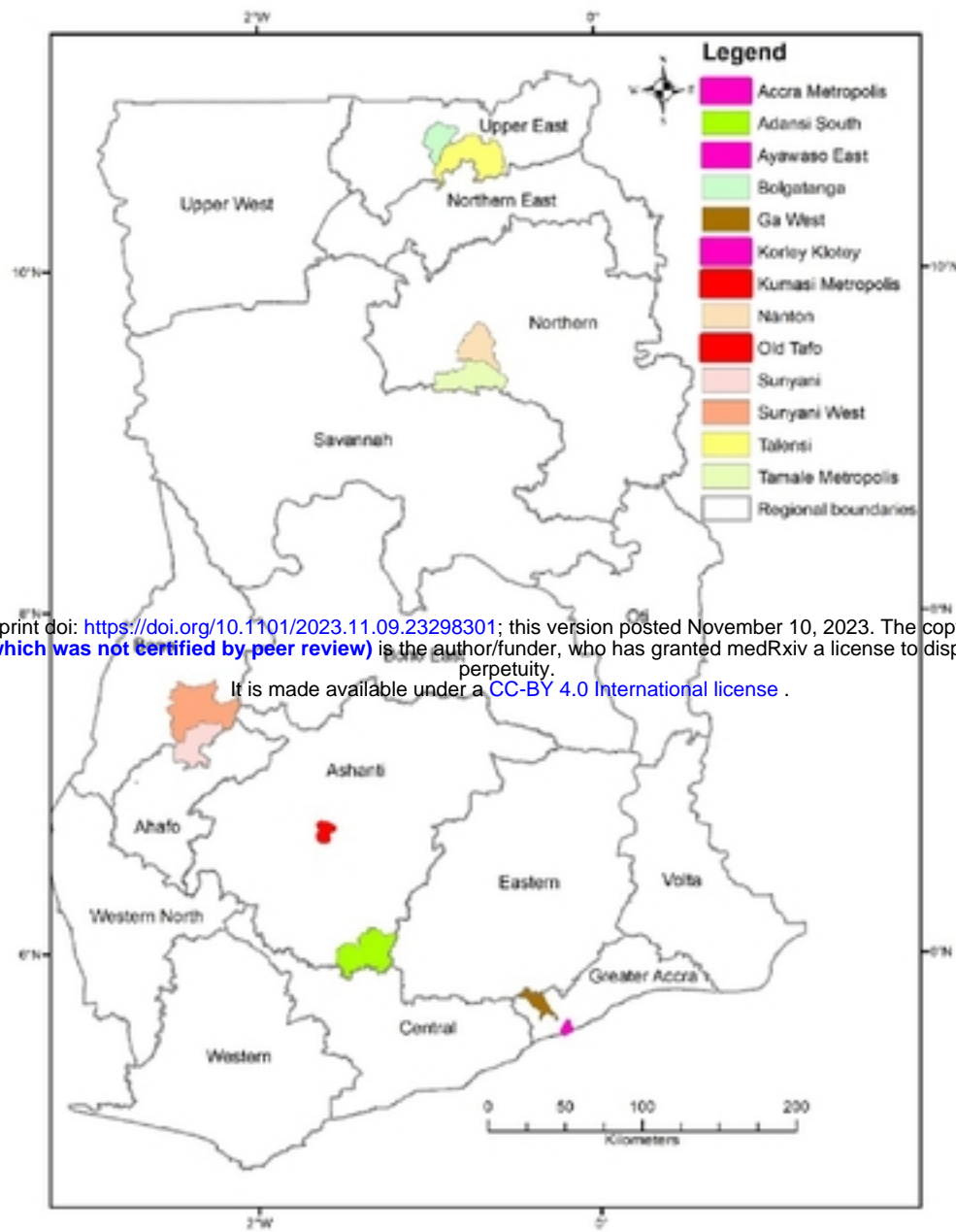
691 **Supporting Information**

692 S1 Figure 1: Map of Ghana showing the study locations

693



1



2

3 **Figure 1: Map of Ghana showing the study locations**

4

5

6 **Table 1: Respondents of qualitative data collection**

Region	Method	Stakeholder respondent(s)								Total
		Mental Health User	Carer	Health Policy Official/ Health Manager	[Mental] Health Clinician/ Service Provider	Educators	Social Workers/ community volunteers	Mental Health Advocate/ Human Rights workers	Donor /Dev't partner	
Upper Region	KII	2 (1F)	2(1F)	1	1	0	0	0	0	6(2F)
East Region	FGD	2 (1F)	2(1F)	0	0	0	0	0	0	4(2F)
Northern Region	KII							1		2
Bono Region	KII	2 (1F)	2 (1F)	2	3(1F)	0	0	1		12(3F)
Ashanti Region	FGD	2 (1F)	2 (1F)	2	1F					7(3F)
Greater Accra Region	KII	2(1F)	1F		1					4(2F)
	FGD									
Greater Accra Region	KII	1		2(1)					2(1)	5(2F)
Accra Region	FGD	1F								1F

medRxiv preprint doi: <https://doi.org/10.1101/2023.11.09.23298301>; this version posted November 10, 2023. The copyright holder for this preprint (which was not certified by peer review) is the author/funder, who has granted medRxiv a license to display the preprint in perpetuity. It is made available under a [CC-BY 4.0 International license](https://creativecommons.org/licenses/by/4.0/).

7 **Source: Field data**

8

9

10 **Table 2a: Study participants' views on mental health leadership and governance at the PHC level and perception of the level of**  
 11 **integration in Ghana**

Indicator	Health System Block Leadership & Governance															
	Health Policy Officials & Implementers / Healthcare Service providers				Mental Health Service Users/ Caregivers/ families				Other (Mental Health/ Human Rights Advocates, Health Development Partners/ Donors)				Total			
	Integration – (No. (%))				Integration – (No. (%))				Integration – (No. (%))				Integration – (No. (%))			
	Yes/ Full/ High (≥75%)	Partial/ Average 50%-74%	No/ Low/ None Exists (<49%)	Total	Yes/ Full/ High (≥75%)	Partial/ Average 50%-74%	No/ Low/ None Exists (<49%)	Total	Yes/ Full/ High (≥75%)	Partial/ Average 50%-74%	No/ Low/ None Exists (<49%)	Total	Yes/ Full/ High (≥75%)	Partial/ Average 50%-74%	No/ Low/ None Exists (<49%)	Total
Mental health Law & level of awareness at the PHC level	107 (41.5)	55 (21.3)	96 (37.2)	258 (100)	40 (8.7)	270 (58.6)	151 (82.8)	461 (100)	54 (48.6)	30 (3.6)	27 (24.3)	111 (100)	201 (24.2)	355 (42.8)	274 (33.0)	830 (100)
Level of implementation of the mental health law	10 (3.9)	100 (38.8)	148 (57.4)	258 (100)	103 (22.3)	141 (30.6)	217 (47.1)	461 (100)	6 (5.4)	68 (61.3)	37 (33.3)	111 (100)	119 (10.5)	309 (43.5)	402 (45.9)	830 (100)
Mental health policy & level of awareness at the PHC level	20 (7.8)	150 (58.1)	88 (34.1)	258 (100)	98 (21.3)	108 (23.4)	255 (55.3)	461 (100)	10 (9.0)	83 (74.8)	18 (16.2)	111 (100)	128 (12.7)	341 (52.1)	361 (35.2)	830 (100)
Mental health plan at the PHC level	125 (48.4)	0 (0.0)	133 (51.6)	258 (100)	163 (35.4)	0 (0.0)	298 (64.6)	461 (100)	56 (50.5)	0 (0.0)	55 (49.5)	111 (100)	344 (41.5)	N/A	486 (58.5)	830 (100)
Mental health plan in place being implemented at PHC level	125 (48.4)	0 (0.0)	133 (51.6)	258 (100)	163 (35.4)	0 (0.0)	298 (64.6)	461 (100)	56 (50.5)	0 (0.0)	55 (49.5)	111 (100)	344 (41.5)	N/A	486 (58.5)	830 (100)
Mental health unit at the PHC level	240 (93.0)	0 (0.0)	18 (7.0)	258 (100)	393 (85.2)	NA (0.0)	68 (14.8)	461 (100)	54 (48.6)	0 (0.0)	57 (51.4)	111 (100)	687 (82.8)	N/A	143 (17.2)	830 (100)

12 **Source: Field survey data**

13

14 **Table 2b: Study participants' views on mental health leadership and governance at the PHC level and perception of the level of**  
 15 **integration in Ghana**

Indicator	Health Policy Officials & Implementers / Healthcare Service providers				Mental Health Service Users/ Caregivers/ families				Other (Mental Health/ Human Rights Advocates, Health Development Partners/ Donors)				Total			
	Integration – (No. (%))				Integration – (No. (%))				Integration – (No. (%))				Integration – (No. (%))			
	Yes/ Full/ High (≥75%)	Partial/ Avgag e 50%- 74%)	No/ Low/ None Exists (<49%)	Total	Yes/ Full/ High (≥75%)	Partial/ Avgag e 50%- 74%)	No/ Low/ None Exists (<49%)	Total	Yes/ Full/ High (≥75%)	Partial/ Avgag e 50%- 74%)	No/ Low/ None Exists (<49%)	Total	Yes/ Full/ High (≥75%)	Partial/ Avgag e 50%- 74%)	No/ Low/ None Exists (<49%)	Total
Coordinator/ Focal Person at the PHC level	230 (89.1)	0 (0.0)	28 (10.9)	<b>258 (100)</b>	313 (67.9)	NA (0.0)	148 (32.1)	<b>461 (100)</b>	40 (36.0)	0 (0.0)	71 (64.0)	<b>111 (100)</b>	583 (70.2)	N/A	247 (29.8)	<b>830 (100)</b>
Involvement of health staff in mental health service development at the PHC level	20 (7.8)	115 (44.6)	123 (47.7)	<b>258 (100)</b>	9 (2.0)	234 (50.8)	218 (47.3)	<b>461 (100)</b>	7 (6.3)	40 (4.8)	64 (57.7)	<b>111 (100)</b>	36 (4.3)	389 (46.9)	405 (48.8)	<b>830 (100)</b>
Private sector participation at the PHC	120 (46.5)	0 (0.0)	138 (53.5)	<b>258 (100)</b>	106 (23.0)	0 (0.0)	355 (77.0)	<b>461 (100)</b>	35 (31.5)	0 (0.0)	76 (68.5)	<b>111 (100)</b>	261 (31.4)	N/A	569 (68.6)	<b>830 (100)</b>
Monitoring & Evaluation of mental healthcare services at the PHC level	135 (52.3)	0 (0.0)	123 (47.7)	<b>258 (100)</b>	95 (20.0)	0 (0.0)	366 (79.4)	<b>461 (100)</b>	50 (45.0)	0 (0.0)	61 (55.0)	<b>111 (100)</b>	280 (33.7)	N/A	550 (66.3)	<b>830 (100)</b>
Perception of extent of integration of mental health services at the at the PHC level (overall)	87 (31.7)	34 (13.2)	137 (53.1)	<b>258 (31.1)</b>	188 (40.8)	58 (12.6)	215 (46.6)	<b>461 (55.5)</b>	45 (40.5)	12 (10.8)	54 (48.7)	<b>111 (13.4)</b>	320 (38.6)	137 (16.5)	406 (48.9)	<b>830 (100)</b>
Mental health Law & level of awareness at the PHC level	30 (12.2)	98 (39.8)	118 (48.0)	<b>246 (100)</b>	54 (19.8)	98 (35.9)	121 (44.3)	<b>273 (100)</b>	125 (40.2)	150 (48.2)	36 (11.6)	<b>311 (100)</b>	209 (25.2)	346 (41.7)	275 (33.1)	<b>830 (100)</b>

16 **Source: Field survey data**

17

18

19 **Table 3a: Study participants' views on mental health leadership and governance at the PHC level and perception of the level of**  
 20 **integration by location**

Health System Block	Leadership & Governance															
	Northern Ghana Integration				Mid-Ghana Integration				Southern Coastal Integration				Total Integration			
Indicator	Yes/ Full/ High (≥75%)	Partial/ Average (50%- 74%)	No/ Low/ None Exists (≤49%)	Total	Yes/ Full/ High (≥75%)	Partial/ Average (50%- 74%)	No/ Low/ None Exists (≤49%)	Total	Yes/ Full/ High (≥75%)	Partial/ Average (50%- 74%)	No/ Low/ None Exists (≤49%)	Total	Yes/ Full/ High (≥75%)	Partial/ Average (50%- 74%)	No/ Low/ None Exists (≤49%)	Total
Level of implementation of the mental health law	26 (10.6)	102 (41.5)	118 (48.0)	<b>246 (100)</b>	50 (18.3)	118 (43.2)	105 (38.5)	<b>273 (100)</b>	90 (28.9)	160 (51.4)	61 (19.6)	<b>311 (100)</b>	166 (20.0)	380 (45.8)	284 (34.2)	<b>830 (100)</b>
Mental health policy & level of awareness at the PHC level	20 (8.1)	100 (40.7)	126 (51.2)	<b>246 (100)</b>	48 (17.6)	122 (44.7)	103 (37.7)	<b>273 (100)</b>	118 (37.9)	126 (40.5)	67 (21.5)	<b>311 (100)</b>	186 (22.4)	348 (41.9)	296 (35.7)	<b>830 (100)</b>
Mental health plan at the PHC level	40 (16.3)	NA (0.0)	206 (83.7)	<b>246 (100)</b>	101 (37.0)	NA (0.0)	172 (63.0)	<b>273 (100)</b>	119 (38.3)	NA (0.0)	192 (61.7)	<b>311 (100)</b>	260 (31.3)	348 (41.9)	296 (35.7)	<b>830 (100)</b>
Mental health plan in place being implemented at PHC level	40 (16.3)	NA (0.0)	206 (83.7)	<b>246 (100)</b>	98 (35.9)	NA (0.0)	172 (63.0)	<b>273 (100)</b>	107 (34.4)	NA (0.0)	204 (65.6)	<b>311 (100)</b>	245 (29.5)	NA (0.0)	585 (70.5)	<b>830 (100)</b>
Mental health unit at the PHC level	148 (60.2)	NA (0.0)	98 (39.8)	<b>246 (100)</b>	177 (64.8)	NA (0.0)	96 (35.2)	<b>273 (100)</b>	285 (91.6)	NA (0.0)	26 (8.4)	<b>311 (100)</b>	610 (73.9)	NA (0.0)	220 (26.5)	<b>830 (100)</b>

21 **Field survey data**

22

23

24

25 **Table 3b: Study participants' views on mental health leadership and governance at the PHC level and perception of the level of**  
 26 **integration by location**

Health System Block	Leadership and Governance Northern Ghana Integration				Mid Ghana Integration				Southern Ghana Integration				Total			
	Yes/ Full/ High (≥75%)	Partial/ Average 50%-74%	No/ Low/ None Exists (<49%)	Total	Yes/ Full/ High (≥75%)	Partial/ Average 50%-74%	No/ Low/ None Exists (<49%)	Total	Yes/ Full/ High (≥75%)	Partial/ Average 50%-74%	No/ Low/ None Exists (<49%)	Total	Yes/ Full/ High (≥75%)	Partial/ Average 50%-74%	No/ Low/ None Exists (<49%)	Total
Coordinator/ Focal Person at the PHC level	148 (60.2)	NA (0.0)	98 (39.8)	246 (100)	179 (65.6)	NA (0.0)	94 (34.4)	273 (100)	287 (92.3)	NA (0.0)	24 (7.7)	311 (100)	614 (74.0)	NA (0.0)	216 (26.0)	830 (100)
Involvement of health staff in mental health service development at the PHC level	34 (13.8)	101 (41.1)	111 (45.1)	246 (100)	67 (24.5)	99 (36.3)	107 (39.2)	273 (100)	97 (31.2)	100 (32.2)	114 (36.7)	311 (100)	198 (23.9)	300 (36.1)	332 (40.0)	830 (100)
Private sector participation at the PHC	48 (19.5)	92 (37.4)	106 (43.1)	246 (100)	71 (26.4)	40 (14.7)	161 (59.0)	273 (100)	109 (35.0)	112 (36.0)	90 (28.9)	311 (100)	229 (27.6)	244 (29.4)	357 (43.0)	830 (100)
Monitoring & Evaluation of mental healthcare services at the PHC level	31 (12.6)	92 (37.4)	106 (43.1)	246 (100)	64 (23.4)	69 (25.3)	140 (51.3)	273 (100)	91 (29.3)	112 (36.0)	90 (28.9)	311 (100)	186 (22.4)	228 (27.5)	416 (50.1)	830 (100)
Perception of extent of integration of mental health services at the PHC level (overall)	97 (39.4)	40 (16.3)	109 (44.3)	246 (29.6)	42 (15.4)	30 (11.0)	201 (73.6)	273 (32.9)	182 (58.5)	20 (6.4)	109 (35.1)	311 (37.5)	321 (38.7)	90 (10.8)	419 (50.5)	830 (100)

27 **Field survey data**

medRxiv preprint doi: <https://doi.org/10.1101/2023.11.09.23298301>; this version posted November 10, 2023. The copyright holder for this preprint **(which was not certified by peer review)** is the author/funder, who has granted medRxiv a license to display the preprint in perpetuity.  
It is made available under a [CC-BY 4.0 International license](#) .