

1 **HIV prevalence in transgender populations and cisgender men who have sex**  
2 **with men in sub-Saharan Africa 2010-2022: a meta-analysis**

3

4 Oliver Stevens<sup>1§</sup>, Rebecca L. Anderson<sup>1</sup>, Keith Sabin<sup>2</sup>, Sonia Arias Garcia<sup>2</sup>,  
5 Elizabeth Fearon<sup>3</sup>, Kingsley Manda<sup>4</sup>, Wame Dikobe<sup>5</sup>, Trevor A. Crowell<sup>6,7</sup>, Leigh  
6 Tally<sup>8</sup>, Lloyd Mulenga<sup>9</sup>, Neena M. Philip<sup>10</sup>, Mathieu Maheu-Giroux<sup>12</sup>, Anne  
7 McIntyre<sup>11</sup>, Wolfgang Hladik<sup>11</sup>, Jinkou Zhao<sup>13</sup>, Mary Mahy<sup>2</sup>, Jeffrey W. Eaton<sup>1,14</sup>

8

9 1 MRC Centre for Global Infectious Disease Analysis, School of Public Health,  
10 Imperial College London, London, United Kingdom

11 2 Data for Impact, The Joint United Nations Program on HIV/AIDS (UNAIDS),  
12 Geneva, Switzerland

13 3 University College London, London, United Kingdom

14 4 Malawi National Statistics Office, Zomba, Malawi

15 5 FHI360, Gaborone, Botswana

16 6 U.S. Military HIV Research Program, Walter Reed Army Institute of Research,  
17 Silver Spring, USA

18 7 Henry M. Jackson Foundation for the Advancement of Military Medicine,  
19 Bethesda, USA

20 8 US Centers for Disease Control and Prevention, Lusaka, Zambia

21 9 Zambia Ministry of Health, Lusaka, Zambia

22 10 ICAP, Columbia University Mailman School of Public Health, New York, New  
23 York, USA

24 11 US Centers for Disease Control and Prevention (CDC), Center for Global Health,  
25 Division of Global HIV & TB, Atlanta, USA

26 12 Department of Epidemiology and Biostatistics, School of Population and Global Health,  
27 McGill University, Montréal, Canada

28 13 The Global Fund to Fight AIDS, Tuberculosis and Malaria, Geneva, Switzerland

29 14 Center for Communicable Disease Dynamics, Department of Epidemiology,  
30 Harvard T.H. Chan School of Public Health, Boston, MA, USA

31

32 § Corresponding author

33 OS: [o.stevens@imperial.ac.uk](mailto:o.stevens@imperial.ac.uk)

34 RA: [Rebecca.anderson21@imperial.ac.uk](mailto:Rebecca.anderson21@imperial.ac.uk)

35 KS: [sabink@unaids.org](mailto:sabink@unaids.org)

36 SAG: [ariasgarcias@unaids.org](mailto:ariasgarcias@unaids.org)

37 EF: [e.fearon@ucl.ac.uk](mailto:e.fearon@ucl.ac.uk)

38 KM: [mandakingsley@yahoo.com](mailto:mandakingsley@yahoo.com)

39 WD: [wdikobe@fhi360.org](mailto:wdikobe@fhi360.org)

40 TC: [tcrowell@hivresearch.org](mailto:tcrowell@hivresearch.org)

41 LT: [yml4@cdc.gov](mailto:yml4@cdc.gov)

42 LM: [lloyd.mulenga@moh.gov.zm](mailto:lloyd.mulenga@moh.gov.zm)

43 NP: [nmp6@cumc.columbia.edu](mailto:nmp6@cumc.columbia.edu)

44 MMG: [mathieu.maheu-giroux@mcgill.ca](mailto:mathieu.maheu-giroux@mcgill.ca)

45 AM: [zat4@cdc.gov](mailto:zat4@cdc.gov)

46 WH: [wfh3@cdc.gov](mailto:wfh3@cdc.gov)

47 JZ: [Jinkou.Zhao@theglobalfund.org](mailto:Jinkou.Zhao@theglobalfund.org)

48 MM: mahym@unaids.org

49 JE: Jeffrey.eaton@imperial.ac.uk

50

51 Corresponding author:

52 Oliver Stevens

53 St. Mary's Hospital Campus Norfolk Place London W2 1PG United Kingdom

54 o.stevens@imperial.ac.uk

55

56 Abstract: 282/350

57 Main text: 1936/2000

58 **Keywords:**

59 HIV-1; Transgender persons; Homosexuality, Male; Sexual and Gender Minorities;

60 Africa

61

62

63

64 **Abstract**

65

66 **Introduction:** The Global AIDS Strategy 2021-2026 calls for equitable and equal  
67 access to HIV prevention and treatment programmes for all populations to reduce  
68 HIV incidence and end HIV/AIDS as a public health threat by 2030. Transgender  
69 populations (TGP), including transmen (TGM) and transwomen (TGW) are  
70 populations that have been marginalised and are at high risk of HIV infection in sub-  
71 Saharan Africa (SSA). Limited surveillance data on HIV among TGP are available in  
72 the region to guide programmatic responses and policymaking. Surveillance data on  
73 cisgender men who have sex with men (cis-MSM) are comparatively abundant and  
74 may be used to infer TGP HIV prevalence.

75

76 **Methods:** Data from key population surveys conducted in SSA between 2010-2022  
77 were identified from existing databases and survey reports. Studies that collected  
78 HIV prevalence on both TGP and cis-MSM populations were analysed in a random  
79 effect meta-analysis to estimate the ratio of cis-MSM:TGW HIV prevalence.

80

81 **Results:** Eighteen studies were identified encompassing 8,052 TGW and 19,492 cis-  
82 MSM. TGW HIV prevalence ranged from 0-71.6% and cis-MSM HIV prevalence from  
83 0.14-55.7%. HIV prevalence in TGW was 50% higher than in cis-MSM (prevalence  
84 ratio (PR) 1.50 95% CI 1.26-1.79). TGW HIV prevalence was highly correlated with  
85 year/province-matched cis-MSM HIV prevalence ( $R^2 = 0.62$ ), but poorly correlated  
86 with year/province-matched total population HIV prevalence ( $R^2 = 0.1$ ). Five TGM  
87 HIV prevalence estimates were identified ranging from 1-24%. Insufficient TGM data  
88 were available to estimate cis-MSM:TGM HIV prevalence ratios.

89

90 **Conclusion:** Transgender women experience a significantly greater HIV burden  
91 than cis-MSM in SSA. Bio-behavioural surveys designed and powered to measure  
92 determinants of HIV infection, treatment coverage, and risk behaviours among  
93 transgender populations, distinct from cis-MSM, will improve understanding of HIV  
94 risk and vulnerabilities among TGP and support improved programmes.

95

96

97

98 **Introduction**

99 The Global AIDS Strategy 2021-2026 calls for equitable and equal access to HIV  
100 prevention and treatment programmes for all populations to reduce HIV incidence  
101 and end HIV/AIDS as a public health threat by 2030 [1]. The Strategy has motivated  
102 renewed focus to estimate population size, HIV prevalence, ART coverage, and new  
103 HIV infections among key populations for all countries in sub-Saharan Africa (SSA)  
104 to reduce inequality in the global HIV/AIDS response.

105

106 Key populations, including transgender and non-binary people, experience a HIV risk  
107 environment wherein the combination of high biological HIV risk and sociostructural  
108 risk factors result in disproportionate HIV burden [2]–[5]. Societal marginalisation,  
109 criminalisation, and stigma have impeded collection of robust HIV surveillance data  
110 for key populations in sub-Saharan Africa, particularly for transgender populations  
111 [6]–[8]. Global systematic reviews of HIV epidemiology in transgender populations  
112 rely on data from high-income countries, Latin America, and South East Asia [4], [5].  
113 Only nine countries in SSA have population size estimates for transgender  
114 populations (TGP), twenty countries have surveillance data on HIV prevalence  
115 among TGP, and six have ART coverage data [9]. It is uncommon for these data to  
116 be disaggregated by gender modality. Though transgender populations are more  
117 routinely included in HIV surveillance since the first studies in SSA [10], [11], data  
118 are insufficient to estimate key HIV epidemic indicators for transgender populations  
119 in all sub-Saharan African countries. HIV prevalence data for men who have sex with  
120 men (MSM) are more widely available in SSA: over 400 HIV prevalence estimates  
121 have been measured since 2010 across 33 of 38 SSA countries [9].

122

123 While cis-MSM and transgender women (TGW) have distinct vulnerabilities to HIV  
124 [12], [13], studies in SSA indicate that HIV epidemiology in these two populations is  
125 linked. TGW most often have male sexual partners, receptive anal sex is common,  
126 and qualitative data indicate that some transgender people associate with belonging  
127 to the gay community [10], [11], [14]–[16]. Many surveillance studies primarily  
128 collecting data among cis-MSM, have also included TGP participants, providing a  
129 source of data in the absence of studies explicitly aiming to recruit TGP. This meta-  
130 analysis quantified relative HIV prevalence between cis-MSM and TGW and  
131 assessed whether there is a consistent relationship to extrapolate MSM HIV  
132 prevalence data to estimate TGW HIV prevalence in settings that lack TGP-specific  
133 surveillance data.

134

## 135 **Methods**

136 We extracted data on HIV prevalence among TGP and cis-MSM between 2010-2022  
137 in sub-Saharan Africa from UNAIDS Global AIDS Monitoring [17], UNAIDS Key  
138 Population Atlas [18], The Global Fund to Fight AIDS, TB, and Malaria surveillance  
139 database, and US Centers for Disease Control and Prevention key population  
140 surveillance databases [9]. Studies were extracted between 2021-2023. Estimates of  
141 HIV prevalence for cis-MSM and any transgender population in the same study were  
142 considered for inclusion in the meta-analysis. Additional data not published in  
143 previous study publications were tabulated and shared by the authors of Fearon et al  
144 [16], Keshinro et al. [19], and Malawi 2019/20, Botswana 2017 and Zambia 2021  
145 Biobehavioural Surveys [20]–[22].

146

147 HIV prevalence data were pooled and weighted relative to the number tested  
148 denominator. Where age-specific HIV prevalence was available, pooled adult  
149 prevalence was extracted. Where studies reported HIV prevalence for more than one  
150 transgender population, TGW estimates only were included in the meta-analysis.  
151 Prevalence ratios (PRs) for HIV prevalence among TGW compared to cis-MSM were  
152 calculated separately for Eastern and Southern Africa (ESA) and Western and  
153 Central Africa (WCA) regions, and across all of sub-Saharan Africa. Analyses were  
154 conducted in R 4.1.2 [23], using the *metafor* package [24].

155

156 Cross-sectional estimates of sex-specific total population HIV prevalence at the  
157 province level were extracted from UNAIDS subnational HIV estimates for 2020  
158 created using the Naomi model [25]. Naomi is a small-area estimation model used to  
159 estimate subnational HIV epidemic indicators for the total population [26]. For each  
160 country, province level estimates were projected back in time 2000-2020 parallel to  
161 the national-level HIV prevalence trajectory as estimated by the Estimation and  
162 Projections Package in Spectrum [27], [28]. Four further estimates of TGW HIV  
163 prevalence [14], [29]–[31], ineligible for inclusion in the meta-analysis as they lacked  
164 matching cis-MSM HIV prevalence estimates, were included in correlation analysis  
165 with total population HIV prevalence.

166

167 This study received ethical approval from the Imperial College Research and Ethics  
168 Committee (#6473559), and as a secondary analysis of anonymised data required  
169 neither informed consent from survey participants nor a consent waiver.

170

171 **Results**



172 Nineteen studies with data from nineteen countries (11 in ESA and 8 in WCA) were  
173 included in the analysis, encompassing 8,052 TGW and 19,492 cis-MSM (Table 1).  
174 Eleven studies were from peer-reviewed literature, and eight were grey literature  
175 studies including biobehavioural surveys (BBS) [32] and PLACE studies [33]. The  
176 median denominator for TGW HIV prevalence was 89 (IQR 40-195) and for cis-MSM  
177 314 (IQR 134-390). HIV status was ascertained by serological assays in all studies.  
178 TGW HIV prevalence ranged from 6.0-69.4% in ESA and 1.9-71.6% in WCA. Cis-  
179 MSM HIV prevalence ranged from 1.0-43.7% in ESA and 0.1-55.7% in WCA.

180

181 Pooling data across sub-Saharan Africa, HIV prevalence in TGW was 50% higher  
182 than in cis-MSM (Figure 1; PR 1.50, 95% CI 1.26-1.79). In ESA, prevalence among  
183 TGW was 1.49 times higher than cis-MSM (95% CI 1.26-1.75) and in WCA 1.46  
184 times higher (95% CI 0.92-2.32).

185

186 TGW HIV prevalence was highly correlated with study-matched cis-MSM HIV  
187 prevalence (Figure 2;  $R^2 = 0.62$ ) and poorly correlated with UNAIDS province/year-  
188 matched total population HIV prevalence ( $R^2 = 0.08$ ).

189

190 One-third of studies (6/19) included, or did not specifically exclude, TGM in the  
191 sampled transgender population. Of these six studies, five were BBS or PLACE  
192 study reports [20], [21], [34]–[36]. One study [35] provided disaggregated TG sample  
193 sizes by TG identity, but reported aggregated HIV prevalence across all TGP; and  
194 three studies provided neither disaggregated sample sizes nor HIV prevalence [20],  
195 [34], [36]. Two studies reported HIV prevalence for non-binary populations [16], [19].  
196 These data were not included in this analysis. Sensitivity analysis excluding the four

197 studies that reported aggregated HIV prevalence led to a non-significant 6%  
198 increase in the relative risk of HIV infection (SSA PR: 1.63, 95% CIs 1.36-1.96).  
199  
200 Five studies reported HIV prevalence estimates for TGM: 10% (4/42) in Benin [31];  
201 7% (3/44) in Botswana [21]; 4% (2/49) in Uganda [37]; 24% (9/65) in Malawi [38];  
202 and 1% (1/30) in Sierra Leone [35]. Comparison and interpretation of these  
203 estimates is challenging as the number of studies and their sample sizes are small  
204 and, beyond TGM, there is no population that all four studies tested (Supplementary  
205 Table 1). From these limited data, TGM may have a lower risk of HIV infection than  
206 TGW.  
207  
208

## 209 **Discussion**

210 HIV prevalence was significantly higher among transgender women than cis-MSM in  
211 sub-Saharan Africa, providing further evidence of the HIV vulnerability of TG  
212 populations distinct from cis-MSM. Previous studies [4], [5] have identified  
213 substantial HIV burden in transgender populations, which this meta-analysis  
214 supports both in absolute terms and relative to cis-MSM, already a vulnerable and  
215 high-risk population sub-Saharan Africa. Transgender populations are becoming  
216 recognised as a key population in sub-Saharan Africa. They are specifically identified  
217 in the National Strategic HIV/AIDS Plans of sixteen countries [39], increasing from  
218 ten in 2018 [40]. We identified nineteen studies that measured HIV prevalence for  
219 TGW and cis-MSM, building on the three African studies included in a recent  
220 systematic review [5].

221

222 We refrained from reporting pooled estimates of TGW HIV prevalence or relative risk  
223 of HIV infection compared to that in the total population as has been presented in  
224 previous studies [4], [5]. Firstly, the relative risk of HIV infection in key populations  
225 varies with total population HIV prevalence in SSA. Summarising a single relative  
226 risk of infection decouples the key population epidemiology in a given country from  
227 the HIV epidemic in the total population. In WCA, cis-MSM HIV prevalence can be  
228 100-fold higher than male total population prevalence, while in ESA it may be similar  
229 to, or lower than that in the total population [9]. Second, total population HIV  
230 prevalence is poorly correlated with cis-MSM HIV prevalence, particularly in WCA  
231 where neighbouring countries with similar generalised HIV epidemics can have  
232 disparate key population epidemics [9], [41]. Instead, we showed a consistent  
233 increased relative risk of HIV infection in TGW compared to cis-MSM. This

234 prevalence ratio may be useful to estimate HIV prevalence among TGW to support  
235 programme planning in settings that lack TGP-specific surveillance. These estimates  
236 should be viewed as interim estimates until TG-specific HIV surveillance can be  
237 conducted. They should not obviate the need for TG surveillance, nor to further  
238 discourse that the programmatic needs of TG can be met programmes focused for  
239 cis-MSM.

240

241 We were unable to estimate the relative HIV prevalence between TGM and cis-  
242 MSM, though limited data indicated that TGM may have a lower risk of HIV infection  
243 than TGW or cis-MSM. Two studies recruited too few transgender men to estimate  
244 HIV prevalence [16], [42]. Transgender men remain an understudied population in  
245 SSA: the primary focus of only two serological testing studies to date [31], [37]. Of the  
246 six studies in this analysis that did not exclude transgender men, four included recent  
247 oral or anal sex with a man as an inclusion criterion. Though data across SSA are  
248 limited, they indicate that cis-women are more likely to be partners of transgender  
249 men than cis-MSM or other transgender men [21], [37], [43]. Transgender men are  
250 likely, therefore, to be excluded from biological surveillance if all transgender  
251 populations are associated with the same HIV risk behaviours as cis-MSM.

252

253 We retained three studies that did not specify which transgender population(s) were  
254 recruited in the main analysis [20], [34], [36]. Sexual behaviour data collected in each  
255 study indicated that TG participants overwhelmingly reported male sexual partners  
256 and receptive anal intercourse. All three studies were recent, published since 2020,  
257 and with large sample sizes. Sensitivity analysis indicates that their inclusion had  
258 only a marginal impact on the estimated relative risk of HIV infection, and we feel

259 that their inclusion alongside studies that explicitly recruited TGW is justified. Survey  
260 data on gender identity were often ambiguous, necessitating its removal from  
261 analysis further reducing sample sizes. Consistently adopting the ‘two-step’ method,  
262 in which survey participants are first asked their assigned sex at birth followed by  
263 their gender today, would improve gender identification in key population surveys  
264 and enhance comparability across studies [37], [44].

265

266 Few measures exist of TG treatment coverage or viral load suppression, and only a  
267 subset are laboratory confirmed [9]. While we identified that TGW are at increased  
268 risk of HIV infection, it was not possible to estimate ART coverage or access to  
269 treatment services either in absolute terms or relative to cis-MSM. This remains a  
270 key data gap in monitoring the objectives laid out by the Global AIDS Strategy.

271

272 Interpretation of this analysis is subject to several limitations. Firstly, we did not  
273 differentiate between studies whose primary objective was transgender surveillance  
274 [10], [11], [19], [22], [34], [35], [42], [45]–[50], and those that reported transgender  
275 participants alongside the primary objective of cis-MSM surveillance [15], [16], [20],  
276 [21], [36], [51]. The latter studies may disproportionately recruit TGP who socialise  
277 with cis-MSM, leading to sexual behaviour and biological testing data that overstate  
278 the similarities between the two populations. Second, insufficient age-specific HIV  
279 prevalence data were available to estimate age-adjusted prevalence risk ratios which  
280 may lead to underestimated prevalence ratios.

281

282 **Conclusion**

283 Transgender women have 50% higher risk of HIV infection than cis-MSM in SSA  
284 and, therefore, TGW and cis-MSM should not be considered as a single risk  
285 population. TGW HIV prevalence is highly correlated with cis-MSM prevalence, and  
286 cis-MSM HIV prevalence may be used to inform estimates of TGW HIV prevalence  
287 in settings that lack TG-specific surveillance. Studies to quantify transgender  
288 population size and measure the treatment cascade among transgender people with  
289 HIV are a priority to quantify progress towards equitable HIV service access and  
290 enable HIV programmes to meet the prevention and treatment needs of transgender  
291 populations.  
292

293 **Competing interests**

294 None

295

296 **Authors' contributions**

297 OS, KS, MM, and JWE conceptualised the study. KS, SAG, JZ, and AA-Q curated  
298 key population survey databases. LF, TC, KM, WD, LM, NP, LT provided additional  
299 unpublished data from surveillance studies. OS and RA reviewed primary source  
300 documents, deduplicated data, and extracted data. OS analysed the data and wrote  
301 the first draft of the manuscript. All authors contributed to interpretation of results and  
302 edited the manuscript for intellectual content. All authors read and approved the final  
303 version of the manuscript for submission.

304

305 **Acknowledgments and funding**

306 This research was supported by UNAIDS, the Bill and Melinda Gates Foundation  
307 (OPP1190661), National Institute of Allergy and Infectious Disease of the National  
308 Institutes of Health under award number R01-AI136664, and the MRC Centre for  
309 Global Infectious Disease Analysis (reference MR/R015600/1), jointly funded by the  
310 UK Medical Research Council (MRC) and the UK Foreign, Commonwealth &  
311 Development Office (FCDO), under the MRC/FCDO Concordat agreement and is  
312 also part of the EDCTP2 programme supported by the European Union.

313

314 TC is supported by cooperative agreements between the Henry M. Jackson  
315 Foundation for the Advancement of Military Medicine, Inc., and the U.S. Department  
316 of Defense [W81XWH-11-2-0174, W81XWH-18-2-0040]

317

318 **Disclaimer**

319

320 The views expressed are those of the authors and should not be construed to  
321 represent the positions of the U.S. Army, the Department of Defense, the  
322 Department of Health and Human Services, the Henry M. Jackson Foundation for  
323 the Advancement of Military Medicine, or the US Centers for Disease Control and  
324 Prevention.

325

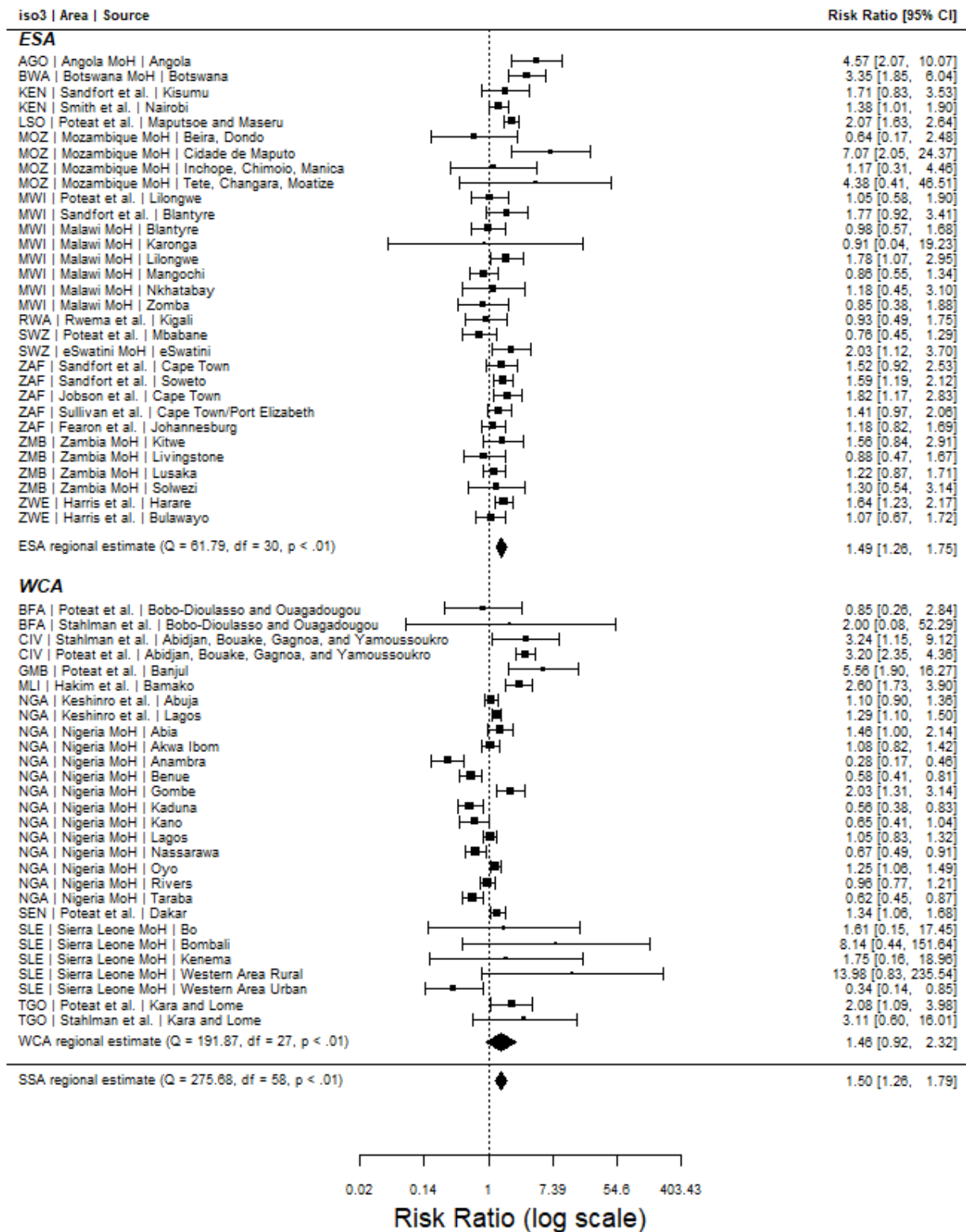


Study	Year of publication	Country	Year of data collection	Transgender inclusion criterion	TGW prevalence (%; n/N)	cis-MSM prevalence (%; n/N)
Stahlman et al. [11]	2016	Burkina Faso	2013	Assigned male sex at birth and report having had insertive or receptive anal sex with a man in the past 12 months	0% (0/5)	4.5% (1/22)
		Côte d'Ivoire	2015		23.5% (16/68)	7.3% (4/55)
		Togo	2013		22.2% (2/9)	7.1% (3/42)
Keshinro et al. [19]	2016	Nigeria	2016	Assigned male sex at birth and report having had insertive or receptive anal sex with a man in the past 12 months	TGW: 51.5% (123/239)	40.7% (786/1929)
					Non-binary: 47.6% (111/233) <sup>Δ</sup>	
Botswana MoH [21]	2017	Botswana	2017	Different gender identity to their biological sex at birth	TGW: 50% (6/12)	14.9% (110/736)
					TGM: 6.8% (3/44) <sup>Δ</sup>	
Mozambique MoH [48]	2018	Mozambique	2017	Assigned male at birth	12.7% (15/118)	9.9% (51/517)
Poteat et al. [10]	2017	Burkina Faso	2013	Assigned male sex at birth	2.8% (3/108)	3.3% (18/552)
		Côte d'Ivoire	2016		25.5% (76/298)	8% (61/766)
		Gambia	2011		50% (2/4)	9% (18/200)
		Lesotho	2014		59.2% (42/71)	28.6% (130/455)
		Malawi	2012		16% (12/75)	15.2% (40/263)
		Senegal	2015		37.2% (74/199)	27.8% (147/528)
		Eswatini	2011		14.2% (17/120)	18.6% (38/204)
		Togo	2013		17.6% (9/51)	8.5% (53/626)
Angola MoH [50]	2018	Angola	2017	Assigned male at birth	9% (8/89)	2% (20/1016)
Hakim et al. [49]	2018	Mali	2015	Assigned male sex at birth and report having had insertive or receptive anal sex with a man in the past 6 months	24.3% (9/37)	9.7% (12/124)
Jobson et al. [51]	2018	South Africa	2017	Biologically male, self-identified as having sex with men	57.1% (12/21)	31.3% (47/150)
Sandfort et al. [15]	2019	Kenya	2016	Were assigned male sex at birth, ever had sex with a man	25% (8/32)	14.6% (20/137)
		Malawi	2016		31.6% (12/38)	17.9% (15/84)
		South Africa	2016		57.6% (38/66)	36.9% (90/244)

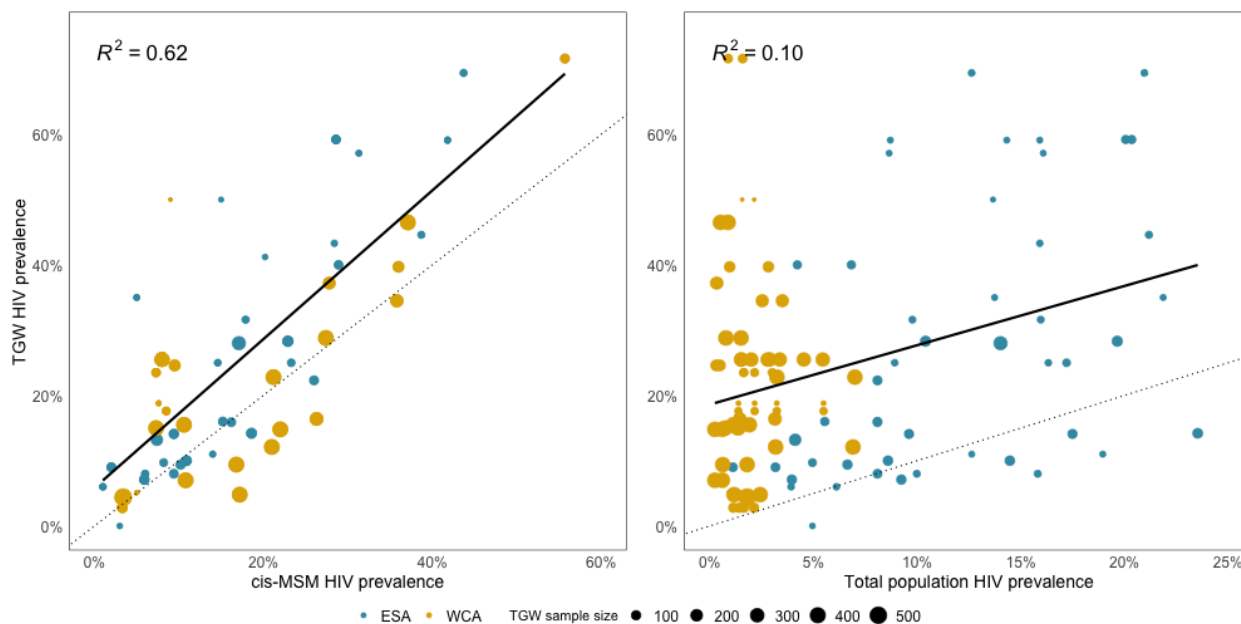
Fearon et al. [16]	2020	South Africa	2017	Assigned male at birth or current male gender identity. Sex with a man in last 12 months	TGW: 44.6% (20/44)	38.6% (90/233)
					TGM: 50% (1/2) <sup>Δ</sup>	
					Non-binary: 15.4% (2/21) <sup>Δ</sup>	
Malawi MoH [20]	2020	Malawi	2020	Engaged in sexual activities with other men in the past 12 months	13.5% (73/540)	12.5% (178/1425)
Nigeria MoH [34]	2020	Nigeria	2020	Identifies him/herself as a transsexual and undertakes sexual activity with a man	18.5% (775/4190)	21.1% (926/4397)
Rwema et al. [45]	2020	Rwanda	2018	Assigned male sex at birth and report having had insertive or receptive anal sex with a man in the past 12 months	9.4% (10/106)	10.2% (64/630)
eSwatini MoH [36]	2021	Eswatini	2020	Report have insertive or receptive anal sex with a man in the past 12 months	41.2% (7/17)	20.2% (84/415)
Smith et al. [42]	2021	Kenya	2017	Male sex assignment at birth or male gender identification currently, and having had consensual anal or oral sexual activity with a man in the previous 12 months	40% (28/70)	28.9% (151/522)
Sullivan et al. [46]	2021	South Africa	2016	Assigned male sex at birth and report having had insertive or receptive anal sex with a man in the past 12 months	59.1% (13/22)	41.8% (110/263)
Harris et al. [47]	2022	Zimbabwe	2019	Born biologically male; engaged in anal or oral sex with a man in the past 12 months	27.5% (92/335)	21.1% (248/1176)
Sierra Leone MoH [35]	2022	Sierra Leone	2021	A person who had a gender identity that is different from his or her sex at birth	4.7% (23/487)	4.2% (18/430)
Zambia MoH [52]	2023	Zambia	2021	Biologically male at birth and self-reported anal or oral sex with biological male in past 6 months	17% (77/453)	13.5% (147/1088)

**Table 1:** Studies included in meta-analysis of HIV prevalence in transwomen (TGW) and cis-gendered men who have sex with men (cis-MSM)

<sup>Δ</sup> Excluded from meta-analysis



**Figure 1:** Forest plot comparing HIV prevalence ratios in transwomen and cis-gendered men-who-have-sex-with-men. ESA = Eastern and Southern Africa; WCA = Western and Central Africa; SSA = Sub-Saharan Africa.



**Figure 2:** Comparison of HIV prevalence among transgender women (TGW) and cis-gender men-who-have-sex-with men (cis-MSM) (left) and HIV prevalence among TGW compared to total population 15-49 years (right). The dotted line represents the line of equality is ( $y = x$ ). Colour of data points represents the UNAIDS region of the study country (ESA = Eastern and Southern Africa; WCA = Western and Central Africa).

Study	Area	Year	HIV prevalence (%)			
			TGM	TGW	cis-MSM	Total population
Benin MoH [31]	Benin	2020	<b>9.5</b>	<b>26.4</b>	7 [43]	<i>0.9</i>
Mujugira et al. [37]	Kampala, Uganda	2020	<b>4.1</b>	<i>20</i> [14]	<i>12.7</i> [53]	<i>7.7</i>
Botswana MoH [21]	Botswana	2017	<b>6.8</b>	<b>45.5</b>	<b>14.9</b>	<i>21.4</i>
Malawi MoH [38]	Malawi	2021	<b>23.9</b>	<b>62.3</b>	<i>12.5</i> [20]	<i>8.1</i>
Sierra Leone [35]	Sierra Leone	2021	<b>1.11</b>	<b>4.36</b>	<b>3.4</b>	<i>1.4</i>

**Supplementary Table 1:** Estimates of transmen (TGM) HIV prevalence compared with transwomen (TGW), cis-gendered men who have sex with men (cis-MSM), and 15-49 total population both sexes. Estimates in bold are from the same study, and TGW and cis-MSM estimates in italics are the best available comparator estimates from other studies. UNAIDS estimates from Spectrum/Naomi were used for total population HIV prevalence estimates.

## References

- [1] United Nations, “End Inequalities. End AIDS. Global AIDS Strategy 2021-2026 | UNAIDS,” 2021. <https://www.unaids.org/en/resources/documents/2021/2021-2026-global-AIDS-strategy> (accessed May 05, 2021).
- [2] T. Poteat, A. Scheim, J. Xavier, S. Reisner, and S. Baral, “Global Epidemiology of HIV Infection and Related Syndemics Affecting Transgender People,” *Journal of acquired immune deficiency syndromes (1999)*, vol. 72, no. Suppl 3. Wolters Kluwer Health, pp. S210–S219, Aug. 15, 2016, doi: 10.1097/QAI.0000000000001087.
- [3] M. Singer, N. Bulled, B. Ostrach, and E. Mendenhall, “Syndemics and the biosocial conception of health,” *The Lancet*, vol. 389, no. 10072. Lancet Publishing Group, pp. 941–950, Mar. 04, 2017, doi: 10.1016/S0140-6736(17)30003-X.
- [4] S. D. Baral, T. Poteat, S. Strömdahl, A. L. Wirtz, T. E. Guadamuz, and C. Beyrer, “Worldwide burden of HIV in transgender women: A systematic review and meta-analysis,” *Lancet Infect. Dis.*, vol. 13, no. 3, pp. 214–222, Mar. 2013, doi: 10.1016/S1473-3099(12)70315-8.
- [5] S. E. Stutterheim, M. Van Dijk, H. Wang, and K. J. Jonas, “The worldwide burden of HIV in transgender individuals: An updated systematic review and meta-analysis,” *PLoS ONE*, vol. 16, no. 12 December. Public Library of Science, Dec. 01, 2021, doi: 10.1371/journal.pone.0260063.
- [6] J. Stannah *et al.*, “HIV testing and engagement with the HIV treatment cascade among men who have sex with men in Africa: a systematic review and meta-analysis,” *Lancet HIV*, vol. 6, no. 11, pp. e769–e787, Nov. 2019, doi: 10.1016/S2352-3018(19)30239-5.

- [7] L. Degenhardt *et al.*, “Global prevalence of injecting drug use and sociodemographic characteristics and prevalence of HIV, HBV, and HCV in people who inject drugs: a multistage systematic review,” *Lancet Glob. Heal.*, vol. 5, no. 12, pp. e1192–e1207, Dec. 2017, doi: 10.1016/S2214-109X(17)30375-3.
- [8] S. A. Garcia *et al.*, “Availability and quality of surveillance and survey data on HIV prevalence among sex workers, men who have sex with men, people who inject drugs, and transgender women in low- And middle-income countries: Review of available data (2001-2017),” *JMIR Public Heal. Surveill.*, vol. 6, no. 4, Oct. 2020, doi: 10.2196/21688.
- [9] O. Stevens, “Key population size, HIV prevalence, and ART coverage in sub-Saharan Africa: systematic collation and synthesis of survey data,” 2022, [Online]. Available: <https://www.medrxiv.org/content/10.1101/2022.07.27.22278071v1>.
- [10] T. Poteat *et al.*, “HIV prevalence and behavioral and psychosocial factors among transgender women and cisgender men who have sex with men in 8 African countries: A cross-sectional analysis,” *PLoS Med.*, 2017, doi: 10.1371/journal.pmed.1002422.
- [11] S. Stahlman *et al.*, “Characterizing the HIV risks and potential pathways to HIV infection among transgender women in Cote d’Ivoire, Togo and Burkina Faso,” *J. Int. AIDS Soc.*, vol. 19, no. 3Suppl 2, Jul. 2016, doi: 10.7448/IAS.19.3.20774.
- [12] T. C. Poteat, L. L. A. van der Merwe, J. Sevelius, and J. A. Keatley, “Inclusion as illusion: erasing transgender women in research with MSM,” *Journal of the International AIDS Society*, vol. 24, no. 1. John Wiley and Sons Inc, Jan. 01,

2021, doi: 10.1002/jia2.25661.

- [13] A. G. Perez-Brumer, C. E. Oldenburg, S. L. Reisner, J. L. Clark, and R. G. Parker, "Towards 'reflexive epidemiology': Conflation of cisgender male and transgender women sex workers and implications for global understandings of HIV prevalence," *Glob. Public Health*, vol. 11, no. 7–8, pp. 849–865, Sep. 2016, doi: 10.1080/17441692.2016.1181193.
- [14] R. King *et al.*, "HIV and transgender women in Kampala, Uganda—Double Jeopardy," *Cult. Heal. Sex.*, vol. 21, no. 6, pp. 727–740, Jun. 2019, doi: 10.1080/13691058.2018.1506155.
- [15] T. G. M. Sandfort *et al.*, "HIV testing and the HIV care continuum among sub-Saharan African men who have sex with men and transgender women screened for participation in HPTN 075," *PLoS One*, 2019, doi: 10.1371/journal.pone.0217501.
- [16] E. Fearon *et al.*, "HIV testing, care and viral suppression among men who have sex with men and transgender individuals in Johannesburg, South Africa," *PLoS One*, vol. 15, no. 6, p. e0234384, Jun. 2020, doi: 10.1371/journal.pone.0234384.
- [17] UNAIDS, "Global AIDS Monitoring 2022," 2022. <https://www.unaids.org/en/global-aids-monitoring> (accessed Feb. 18, 2022).
- [18] UNAIDS, "Key Populations Atlas." <https://kpatlas.unaids.org/dashboard> (accessed Nov. 27, 2021).
- [19] B. Keshinro *et al.*, "High prevalence of HIV, chlamydia and gonorrhoea among men who have sex with men and transgender women attending trusted community centres in Abuja and Lagos, Nigeria," in *Journal of the International AIDS Society*, 2016, vol. 19, no. 1, doi: 10.7448/IAS.19.1.21270.



- [20] Ministry of Health & National Statistics Office, “Malawi Biological and Behavioural Surveillance Survey 2019-2010,” 2020, [Online]. Available: [www.nsomalawi.mw](http://www.nsomalawi.mw).
- [21] Botswana Ministry of Health, “Behavioral and Biological Surveillance Survey of HIV/STI among select high-risk subpopulations in Botswana,” 2017.
- [22] Zambia Ministry of Health, “BIOBEHAVIORAL SURVEY AMONG MEN WHO HAVE SEX WITH MEN IN ZAMBIA,” no. November, 2021.
- [23] R Core Team, “R: A language and environment for statistical computing.” 2021.
- [24] W. Viechtbauer, “Conducting meta-analyses in R with the metafor package.,” *J. Stat. Softw.*, 2010.
- [25] UNAIDS, “HIV sub-national estimates viewer,” 2021. <https://naomi-spectrum.unaids.org/> (accessed May 12, 2022).
- [26] J. W. Eaton *et al.*, “Naomi: a new modelling tool for estimating HIV epidemic indicators at the district level in sub-Saharan Africa,” *J. Int. AIDS Soc.*, 2021, doi: 10.1002/jia2.25788.
- [27] J. W. Eaton *et al.*, “The Estimation and Projection Package Age-Sex Model and the r-hybrid model: New tools for estimating HIV incidence trends in sub-Saharan Africa,” *AIDS*, vol. 33, no. Suppl 3, pp. S235–S244, Dec. 2019, doi: 10.1097/QAD.0000000000002437.
- [28] J. Stover *et al.*, “Updates to the Spectrum/AIM model for estimating key HIV indicators at national and subnational levels,” *AIDS*, vol. 33, no. Suppl 3, pp. S227–S234, Dec. 2019, doi: 10.1097/QAD.0000000000002357.
- [29] Cote d’Ivoire Ministry of Health, “Rapport de l’étude pour l’identification des besoins spécifiques en matière de prévention et prise en charge IST-VIH/SIDA

- chez les personnes transgenres a Abidjan,” 2019.
- [30] Mali Ministry of Health, “Analyse de la situation des personnes transgenres au Mali en relation avec l’infection a VIH et la SIDA,” 2019.
- [31] Benin Ministry of Health, “Enquete bio-comportementale, cartographie, et estimation de la taille des transgenres au Benin,” 2020.
- [32] UNAIDS, FHI 360, WHO, CDC, and PEPFAR, *Biobehavioural Survey Guidelines For Populations At Risk For HIV*. 2017.
- [33] S. Weir, “Priorities for Local AIDS Control Efforts (PLACE),” 2019. [Online]. Available: [https://www.measureevaluation.org/resources/publications/ms-19-173/at\\_download/document](https://www.measureevaluation.org/resources/publications/ms-19-173/at_download/document).
- [34] Nigeria Ministry of Health, “Integrated Biological & Behavioural Surveillance Survey (IBBSS) among Key Populations in Nigeria,” 2020.
- [35] Sierra Leone Ministry of Health, “Integrated Biobehavioural Survey and population size estimation among FSW, MSM, PWID, TG, and PCS in Sierra Leone,” 2021.
- [36] eSwatini Ministry of Health, “Integrated biological-behavioural surveillance survey among female sex workers and men who have sex with men in eSwatini,” 2021.
- [37] A. Mujugira *et al.*, “‘You are not a man’: a multi-method study of trans stigma and risk of HIV and sexually transmitted infections among trans men in Uganda,” *J. Int. AIDS Soc.*, vol. 24, no. 12, Dec. 2021, doi: 10.1002/jia2.25860.
- [38] Malawi Ministry of Health, “HIV risk, access to health services and population size estimate of transgender community in Malawi,” 2021.
- [39] J. Sherwood, E. Lankiewicz, E. Castellanos, N. O’Connor, L. Theron, and A. Restar, “Assessing inclusion of trans people in HIV national strategic plans: a

- review of 60 high HIV prevalence countries,” *J. Int. AIDS Soc.*, vol. 24, no. 11, p. e25837, Nov. 2021, doi: 10.1002/jia2.25837.
- [40] WHO, “Focus on key populations in national HIV Strategic PLans in the Africa Region,” 2018. Accessed: Feb. 18, 2022. [Online]. Available: <http://apps.who.int/iris/handle/10665/330811>.
- [41] P. H. S. Hessou *et al.*, “Comparison of the prevalence rates of HIV infection between men who have sex with men (MSM) and men in the general population in sub-Saharan Africa: A systematic review and meta-analysis,” *BMC Public Health*, vol. 19, no. 1, p. 1634, Dec. 2019, doi: 10.1186/s12889-019-8000-x.
- [42] A. D. Smith, J. Kimani, R. Kabuti, P. Weatherburn, E. Fearon, and A. Bourne, “HIV burden and correlates of infection among transfeminine people and cisgender men who have sex with men in Nairobi, Kenya: an observational study,” *Lancet HIV*, vol. 8, no. 5, pp. e274–e283, 2021, doi: 10.1016/S2352-3018(20)30310-6.
- [43] Benin Ministry of Health, “Analyse de la situation des transgenres en matiere de l’infection a VIH et le SIDA au Benin,” 2017.
- [44] S. L. Reisner *et al.*, “Using a Two-Step Method to Measure Transgender Identity in Latin America/the Caribbean, Portugal, and Spain,” *Arch. Sex. Behav.*, vol. 43, no. 8, pp. 1503–1514, Oct. 2014, doi: 10.1007/s10508-014-0314-2.
- [45] J. O. Twahirwa Rwema *et al.*, “HIV infection and engagement in HIV care cascade among men who have sex with men and transgender women in Kigali, Rwanda: a cross-sectional study,” *J. Int. AIDS Soc.*, vol. 23, no. S6, p. e25604, Oct. 2020, doi: 10.1002/jia2.25604.
- [46] P. S. Sullivan *et al.*, “HIV prevalence and incidence in a cohort of South African

- men and transgender women who have sex with men: the Sibanye Methods for Prevention Packages Programme (MP3) project,” *J. Int. AIDS Soc.*, vol. 23, no. S6, Oct. 2020, doi: 10.1002/jia2.25591.
- [47] T. G. Harris *et al.*, “HIV care cascade and associated factors among men who have sex with men, transgender women, and genderqueer individuals in Zimbabwe: findings from a biobehavioural survey using respondent-driven sampling,” *Lancet HIV*, vol. 0, no. 0, Feb. 2022, doi: 10.1016/S2352-3018(21)00297-6.
- [48] Mozambique Ministry of Health, “Mapeamento Programático e Prevalência de HIV entre Populações Chave em 5 Províncias de Moçambique: Estudo PLACE 2017,” pp. 1–158, 2018.
- [49] A. J. Hakim *et al.*, “An urgent need for HIV testing among men who have sex with men and transgender women in Bamako, Mali: Low awareness of HIV infection and viral suppression among those living with HIV,” *PLoS One*, vol. 13, no. 11, pp. 1–14, 2018, doi: 10.1371/journal.pone.0207363.
- [50] Angola Ministry of Health, “Mapeamento Programático e Prevalência de VIH e outras ITS entre Populações Chave de Angola: Estudo PLACE 2017,” 2018.
- [51] G. Jobson *et al.*, “Gender identity and HIV risk among men who have sex with men in Cape Town, South Africa,” *AIDS Care - Psychol. Socio-Medical Asp. AIDS/HIV*, vol. 30, no. 11, pp. 1421–1425, 2018, doi: 10.1080/09540121.2018.1465175.
- [52] R. J. Hayes *et al.*, “Effect of Universal Testing and Treatment on HIV Incidence — HPTN 071 (PopART),” *N. Engl. J. Med.*, vol. 381, no. 3, pp. 207–218, Jul. 2019, doi: 10.1056/NEJMoa1814556.
- [53] W. Hladik *et al.*, “Men Who Have Sex with Men in Kampala, Uganda: Results

from a Bio-Behavioral Respondent Driven Sampling Survey," *AIDS Behav.*,  
vol. 21, no. 5, pp. 1478–1490, 2017, doi: 10.1007/s10461-016-1535-2.