

Social Network Strategies to Distribute HIV Self-testing Kits: A Global Systematic Review and Network Meta-analysis

Siyue Hu^{1,2,3}, Fengshi Jing⁴, Chengxin Fan^{3,5}, Yifan Dai^{1,2,3}, Yewei Xie⁶, Yi Zhou⁷, Hang Lv⁷, Xi He⁸, Dan Wu^{3,5,9}, Joseph D. Tucker^{3,9}, Weiming Tang^{1,3§}

1 Dermatology Hospital of Southern Medical University, Guangzhou, China

2 School of Public Health, Southern Medical University, Guangzhou, China

3 University of North Carolina Project – China, Guangzhou, China

4 Faculty of Data Science, City University of Macau, Taipa, Macao SAR, China

5 School of Public Health, Nanjing Medical University, Nanjing, China

6 Programme in Health Services and Systems Research, Duke-NUS Medical School, Singapore

7 Zhuhai Center for Diseases Control and Prevention, Zhuhai, China

8 Zhuhai Xutong Voluntary Services Center, Zhuhai, China

9 London School of Hygiene and Tropical Medicine, London, UK

§ Corresponding author: Weiming Tang

7 Lujing Road,

Dermatology Hospital of Southern Medical University, Guangzhou, 510095, China

Phone: 8615920567132

Email: weiming_tang@med.unc.edu.

E-mail addresses of authors:

S.H: husiyue2021@163.com

F.J: fjing4-c@my.cityu.edu.hk

C.F: chengxinfan317@163.com

Y.D: daiyifan_2022@outlook.com

Y.X: yewei.xie@u.duke.nus.edu

Y.Z: zhouyi_888@163.com

H.L: 930224lh@163.com

X.H: zhxt2016@163.com

D.W: dan.wu@lshtm.ac.uk

D.J: jdtucker@med.unc.edu

W.T: weiming_tang@med.unc.edu

Keywords: HIV/AIDS, HIV self-testing, social network, intervention, network meta-analysis, systematic review

Word count:

Abstract: 344/350

Main text: 4166/5000

1 **Abstract**

2 **Introduction:** Social network strategies, in which social networks are utilized to influence
3 individuals or communities, are increasingly being used to deliver human immunodeficiency virus
4 (HIV) interventions to key populations. We summarized and critically assessed existing research
5 on the effectiveness of social network strategies in promoting HIV self-testing (HIVST).

6
7 **Methods:** Using search terms related to social network interventions and HIVST, we searched
8 five databases for trials published between January 1st, 2010, and June 30th, 2023. Outcomes
9 included uptake of HIV testing, HIV seroconversion, and linkage to antiretroviral therapy (ART)
10 or HIV Care. We used network meta-analysis to assess the uptake of HIV testing through social
11 network strategies compared with control methods. A pairwise meta-analysis of studies with a
12 comparison arm that reported outcomes was performed to assess relative risks (RR) and their
13 corresponding 95% confidence intervals (CI).

14
15 **Results and discussion:** Among the 3,745 manuscripts identified, 33 studies fulfilled the inclusion
16 criteria, including one quasi-experimental study, 17 RCTs and 15 observational studies. Networks
17 HIVST testing was organized by peers (distributed to known peers, 15 studies), partners
18 (distributed to their sexual partners, 10 studies), and peer educators (distributed to unknown peers,
19 8 studies). The results showed that all of the three social network distribution strategies enhanced
20 the uptake of HIV testing compared to standard facility-based testing. Among social networks,
21 peer distribution had the highest uptake of HIV testing (79% probability, SUCRA 0.92), followed
22 by partner distribution (72% probability, SUCRA 0.71), and peer educator distribution (66%
23 probability, SUCRA 0.29). Pairwise meta-analysis showed that peer distribution (RR 2.29, 95%
24 CI 1.54-3.39, 5 studies) and partner distribution (RR 1.45, 95% CI 1.05-2.02, 7 studies) also
25 increased the probability of detecting HIV reactivity during testing within the key population when
26 compared to the control. Linkage to ART or HIV Care remained comparable to facility-based
27 testing across the three HIVST distribution strategies.

28

29 **Conclusions:** Network-based HIVST distribution is considered effective in augmenting HIV
30 testing rates and reaching marginalized populations compared to facility-based testing. These
31 strategies can be integrated with the existing HIV care services, to fill the testing gap among key
32 populations globally.

33

34 PROSPERO Number: CRD42022361782

35 **Introduction**

36 Key populations, such as men who have sex with men (MSM), people who use drugs, and sex
37 workers, face a heightened risk of HIV exposure [1]. The contribution to HIV transmission is
38 greater than that of low-risk populations outside this population [2, 3]. Accordingly, the public
39 health community increasingly recognizes that key populations have a unique role in implementing
40 HIV interventions. As a complementary approach to HIV testing services (HTS), HIV self-testing
41 (HIVST) has demonstrated its safety, accuracy, and acceptability among key populations [4, 5].
42 With HIVST, individuals can collect their samples for testing and read the results to decide where
43 and when to test while ensuring efficiency, privacy, and confidentiality [6]. The significance of
44 HIVST is underscored in the latest consolidated guidelines on HIV, while the WHO has further
45 emphasized recommending network-based strategies in their updated recommendations [7, 8].
46 Thus, strategies that can facilitate the effectiveness of HIVST are needed to achieve the maximum
47 prevention effect of HIVST.

48

49 Social network strategy, a method or approach used in social interventions that operates through
50 interconnections among at-risk groups, has great potential to improve HIVST coverage [9]. In the
51 social network context, peers share the same characteristics (e.g., demographic, cultural, health
52 outcomes, and behaviors) with the target audience [10]. Members of social networks often have
53 similar HIV risks, trust each other, and are interested in helping each other [11]. Based on these
54 principles, our social network strategies utilize peer-driven interventions in which peers (with or
55 without prior knowledge) take on the role of HIV prevention educators, HIVST kit providers, or
56 health partners to help identify network partners and motivate others to get tested. Information can
57 be disseminated more effectively when health information and incentives for preventive measures
58 are disseminated through close social relationships [12]. Using close friends or trusted peers as a

59 source of information increases the credibility and trustworthiness of the information for the
60 recipients [13]. In addition, social network strategies utilize social pressure and reciprocal
61 relationships to encourage individuals to adopt healthy behaviors and provide support when
62 needed [14, 15]. Social network strategies aim to harness social networks to generate social
63 influence and accelerate behavior change to achieve desired outcomes at the individual or
64 community level. HIV testing based on social network strategies has been supported by CDC,
65 WHO, and other guidelines while increasingly being used in HIV interventions [8, 16].

66
67 Previous studies have mainly evaluated the efficiency of HIVST, which have shown higher test
68 uptake rates compared to standard testing services alone [5]. Meanwhile, studies that have explored
69 the role of social networks have generally only compared HIV testing or risk behaviors and have
70 not further explored the impact of social networks on HIVST [14, 17]. Some of these studies have
71 been limited to marginalized populations such as female sex workers [18]. Currently,
72 conversations around HIV testing have shifted towards integrating HIVST as a strategy within the
73 continuum of HIV care, and social network strategies have shown great potential in improving
74 HIVST [15, 19], while there is an expansion of network-supported HIVST. However, there is a
75 lack of reviews that summarize the role of social network strategies in HIVST interventions.
76 Knowledge gaps remain in terms of which strategies are most effective, for whom, and in which
77 settings they are best suited for scaling up. To optimize the effectiveness of HIVST, it is essential
78 to consider information about the role of social networks in the HIV care cascade. Network meta-
79 analysis allows for simultaneous comparison of the effects of multiple interventions and
80 consideration of other potential sources of heterogeneity. Using direct comparisons to generate
81 indirect effect estimates and ranking distribution strategies provides a complementary approach to
82 determining optimal implementation strategies.

83
84 This study aims to investigate the effects of social network strategy on improving HIV testing
85 uptake among at-risk populations who used HIVST through a systematic review and network
86 meta-analysis.

87

88 **Methods**

89 **Search Strategy and Selection Criteria**

90 This systematic review and meta-analysis followed the Preferred Reporting Items for Systematic
91 Reviews and Meta-Analyses for Network Meta-Analyses (PRISMA-NMA) and Cochrane
92 guidelines [20]. The following databases were utilized for the literature search: (1) PubMed; (2)
93 Embase; (3) Web of Science; (4) Cochrane Library; and (5) Wiley. The initial search strategy
94 formulated for PubMed used the combination of key terms that include "HIV/AIDS", "social
95 network", and "HIVST" (Supplementary Appendix 1), which were subsequently adapted into
96 corresponding index terms for the other searched databases. The search was completed and limited
97 to peer-reviewed journal articles published in English from January 1st, 2010, to June 30th, 2023,
98 with no geographic limitation. Additional articles were identified through manual reference
99 checking of relevant studies.

100
101 Trials with a comparison arm or observational studies that evaluated any social network strategies
102 used for HIVST in any setting that reported quantitative outcomes were included. The study
103 population was the population receiving HIVST services. All studies were required to use social
104 network strategies as an intervention and to report outcomes on HIV testing uptake, HIV
105 seroconversion rates, or linkage to ART or HIV Care. ART initiation was selected preferentially
106 as an outcome, and linkage to any HIV services was used if ART initiation was not available.
107 Studies without a comparison arm were also included. Two independent reviewers (YD and CF)
108 first assessed the title and abstracts to identify relevant records for inclusion following the
109 eligibility criteria, with a third reviewer as a tiebreaker (SH). Full texts of included studies were
110 retrieved and assessed for inclusion following the same screening method. Two reviewers jointly
111 developed a data extraction form and completed it independently.

112

113 **Intervention categorization**

114 We grouped social network strategies for HIVST according to who distributed the tests, yielding
115 three distribution strategies: 1) peer distribution focused on recruiting peers (defined as "index")
116 and encouraging peers to distribute the HIVST kits to people in their social networks (known peers,
117 defined as "alter"); 2) partner distribution that distributed the kits from participants to their sexual
118 partners; and 3) peer educator distribution that peer educators distribute the services to people
119 outside their social network (unknown peers). Peer educators were usually assigned to recruit
120 participants or were randomly assigned to groups of recruited participants after receiving

121 corresponding training, and then linkages were established for behavioral interventions. Peer
122 educators acted as HIV-related information popularizers and HIVST kit providers to influence
123 social norms in the established community for further distribution of the HIVST kits.

124

125 **Data analysis**

126 For studies with a comparison arm, pooled relative risks (RR) with 95% confidence intervals (CI)
127 were used to compare outcomes and the heterogeneity was assessed by calculating I². We built
128 forest plots for each outcome using Review Manager version 5.4. A network meta-analysis was
129 performed to analyze the primary outcome of HIV testing uptake. The final model was selected by
130 evaluating a combination of the deviance information criterion (DIC), Markov chain Monte Carlo
131 (MCMC) error, and trace and density plots. The node-splitting model was applied to analyze the
132 direct and indirect comparison results to observe the consistency. Results were presented in risk
133 ratios (RR) and 95% credible intervals (CrI), as well as relative effects tables and forest plots. In
134 addition, ranking probabilities were used to indicate the likelihood or chance of each intervention
135 being ranked at a specific position within the comparison. A ranking probability of 1 (100%)
136 represents the highest ranking of a distribution strategy and 0 the lowest. Probability values were
137 summarized and are reported as the surface under the cumulative ranking (SUCRA). All network
138 meta-analyses were carried out using the meta and gemtc packages in R software version 4.2.2.

139

140 **Quality assessment**

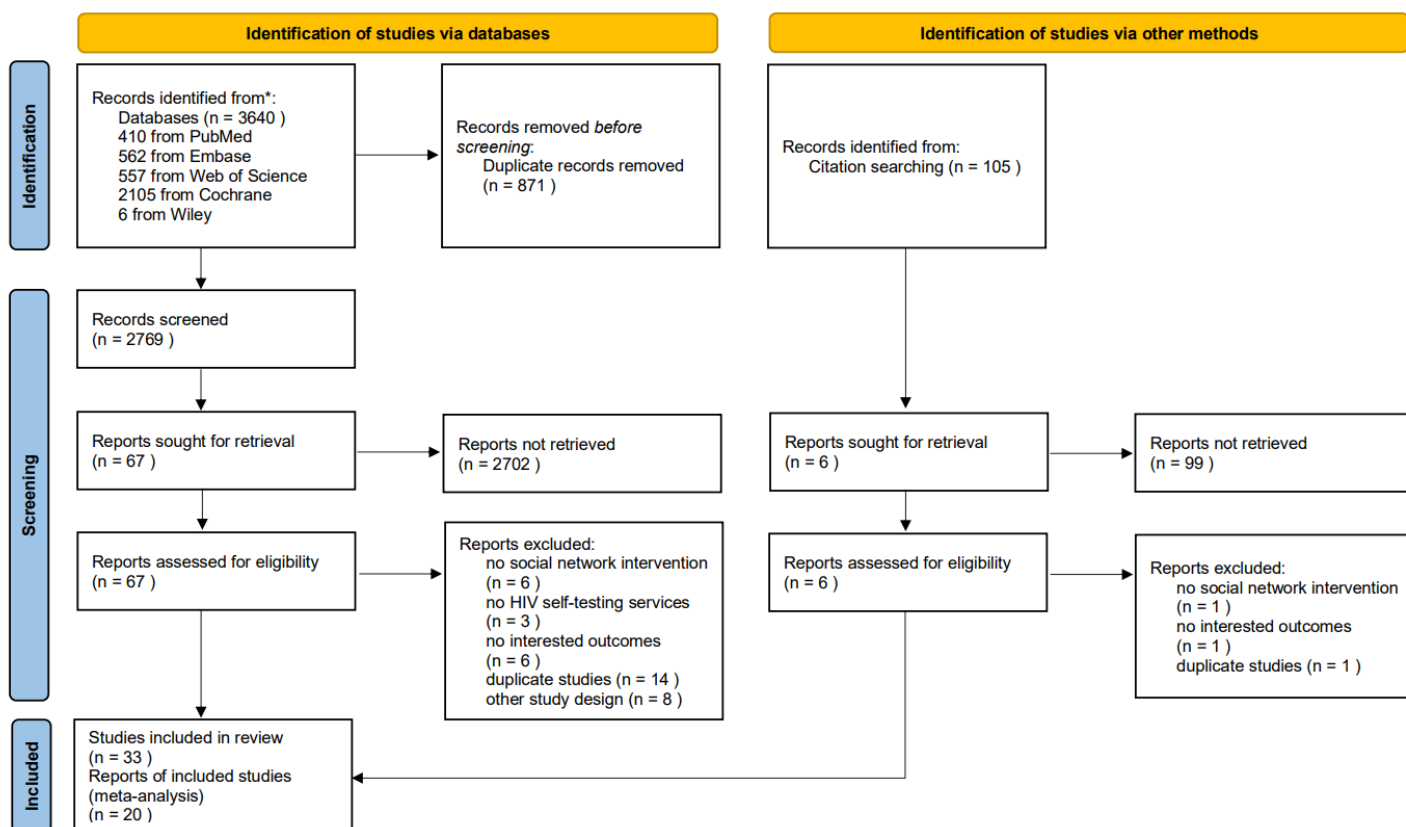
141 In an analysis of quality assessment, studies were stratified based on study design and level of
142 evidence. Bias among randomized controlled studies were assessed across five domains using the
143 Cochrane risk of bias tool [21]. Bias in observational studies was assessed using the Newcastle-
144 Ottawa Quality Assessment Scale [22]. The quality of observational studies was evenly distributed,
145 with some studies judged to be of poor or fair quality, mainly due to insufficient comparability and
146 outcome data (Supplementary Table 5). For all randomized controlled trials (RCTs), performance
147 and detection bias items represented a high risk of bias, respectively, primarily due to failure to
148 blind participants and personnel and to blind outcome assessment (Supplementary Table 6 and
149 Supplementary Figure 1). A quasi-experimental study identified concerns about selection and
150 reporting bias due to selective reporting.

151

152 Results

153 The search yielded 3,640 citations and 105 additional records identified through other sources.
 154 After removing duplicate citations, 2,775 unique titles and abstracts were screened, and 73 full-
 155 text articles were assessed for eligibility. This evaluation ultimately included 33 studies, including
 156 one quasi-experimental study, 17 RCTs, and 15 observational studies (Figure 1). Six studies were
 157 from high-income countries, 19 in middle-income countries, and eight in low-income countries.
 158 The included studies were conducted in eight countries from 2010-2021, six in China [23-28], six
 159 in South Africa [29-34], six in the US [35-40], five in Uganda [41-45], four in Kenya [46-49],
 160 three in Malawi [50-52], two in Vietnam [53, 54], and one in Zambia [55].

161



162

163 **Figure 1. PRISMA-NMA flow chart for study.**

164

165 The study populations were: 15 conducted in MSM, three in male partners of antenatal care
 166 clinic (ANC), two in key populations and their partners (including people who inject drugs
 167 (PWID), MSM, sex workers, and their partners), two in female sex workers (FSW), two in young

168 people, two in young woman and their partners, two in women living with HIV and their male
169 partners, one in partners of people living with HIV, one in general population and three in two
170 populations. Among them, two were conducted in partners of people living with HIV and male
171 partners in ANC, and one in both key populations and sexual partners of pregnant and lactating
172 women.

173

174 Of these included studies, 21 of the 33 studies had comparison groups, 17 studies compared
175 HIVST distribution with standard HCW-administered facility-based HIV testing, one study
176 compared different forms of the secondary distribution of HIVST, and three studies compared
177 the impact of peer educators on HIVST distribution. Regarding compensation, 16 studies had no
178 compensation, whereas 12 studies paid their partners, with 11 giving monetary incentives and
179 one giving material incentives, including reimbursement for transportation, T-shirts, backpacks,
180 and umbrellas. In addition, five studies imposed additional requirements, of which two had to
181 advise on partner negotiation and communication, one required telephone confirmation that the
182 kit had been delivered to the recipient, one required a report for confirmatory HTC at the clinic,
183 and one required daily or on-demand PrEP. The characteristics of the included studies and
184 interventions with and without comparison groups are shown in Table 1A and Table 1B. Further
185 detailed characterization and study outcomes are listed in the Supplementary Material
186 (Supplementary Tables 1-2).

187

188 **Table 1A. Included Study Characteristics: No comparison group**

Study	Country	Study design	Study Population	HIVST Distribution Strategy	Sample size	Seed size	Social network member size
Kitenge 2022	South Africa	Cross-sectional study	General population	Peer distribution in the community	1089	640	449
Kwan 2023	China	Cross-sectional study	MSM	Peer distribution in the community	463	150	313
Lippman 2018	South Africa	Cohort	MSM	Peer distribution in the community	855	127	728
Li S 2021	China	Cross-sectional study	MSM	Peer distribution in the community	2263	1422	394
Matovu 2020	Uganda	Cohort	Young people (both males and females, age 15–24 years) and adult men (25 years or older)	Peer distribution in the community	332	34	298
Nasuuna 2022	Uganda	Cross-sectional study	Key populations (FSW and MSM), sexual partners of pregnant and lactating women (mothers)	Peer distribution in the community/ Partner distribution in the community	18756	9378	9378

Study	Country	Study design	Study Population	HIVST Distribution Strategy	Sample size	Seed size	Social network member size
Nguyen 2019	Vietnam	Cohort	Key populations and their partners (people who inject drugs, MSM, sex workers, and their partners)	Peer educator distribution in the community	2009	-	-
Nguyen 2019	Vietnam	Cohort	Key populations and their partners (people who inject drugs, MSM, sex workers, and partners of people living with HIV)	Peer educator distribution in the community	892	-	-
Thirumurthy 2016	Kenya	Cohort	HIV-uninfected women aged 18-39 years and their male partners	Partner distribution in the community	725	280	445
Wu D 2021	China	Cohort	MSM	Peer distribution in the community	652	371	281
Zhang J 2021	China	Cohort	MSM who are PrEP users	Partner distribution in the community	651	471	180
Zishiri 2022	South Africa	Cross-sectional study	Partners of ANC and partners of newly diagnosed HIV	Partner distribution in the community	ANC:7710 index:2961	ANC:4235 index:1649	ANC:3475 index:1312

190 **Table 1B. Included Study Characteristics: Comparison group**

Study	Country	Study design	Study Population	HIVST Distribution Strategy	Sample size	Seed size	Social network member size
Chanda 2017	Zambia	Cluster RCT	FSW	Peer educator distribution in the community	1125	160(Standard:53, Delivery: 53, Coupon: 54)	965(Standard:320, Delivery: 316, Coupon: 329)
Choko 2019	Malawi	Cluster RCT	Male partners of ANC	Partner distribution in the community	4698	2349(I:1941, C:408)	2349(I:1941, C:408)
Choko 2021	Malawi	Cluster RCT	Partners of ANC, partners of newly diagnosed HIV	Partner distribution in the community	8505	ANC:4544(SOC:1447, HIVST:1465, HIVST plus:1632) index:708(SOC:234, HIVST:169, HIVST plus:305)	ANC:2604 (SOC:498, HIVST: 1106, HIVST plus:1000) index:649 (SOC:209, HIVST:155, HIVST plus:285)
Dovel 2019	Malawi	RCT	Partners of people living with HIV	Partner distribution in the community	849	484(I:349, C:135)	365((I:258, C:107)

Study	Country	Study design	Study Population	HIVST Distribution Strategy	Sample size	Seed size	Social network member size
Frye 2021	The US.	RCT	YBMSM (young black MSM) and Transwomen	HCW at the health facility	376	188(I:89, C:99)	188(I:90, C:98)
Gichangi 2018	Kenya	RCT	Male partners of ANC	Partner distribution in the community	2543	1410(I:472, C:938)	1133(I:396, C:737)
Joseph 2022	South Africa	RCT	Male partners of WLHIV (women living with HIV)	Partner distribution in the community	352	176(I:85, C:91)	176(I:85, C:91)
Lightfoot 2018	The US.	Cohort	MSM	Peer distribution in the community	195	30	165
MacGowan 2020	The US.	RCT	MSM	Peer distribution in the community	2968	667	2301
Masters 2016	Kenya	RCT	Male partners of ANC	Partner distribution in the community	1140	570(I:284, C:286)	570(I:284, C:286)

Study	Country	Study design	Study Population	HIVST Distribution Strategy	Sample size	Seed size	Social network member size
Merchant 2018	The US.	RCT	YMSM (young adult black, Hispanic, and white MSM)	Peer distribution in the community	241	88(I:51, C:37)	153(I:82, C:71)
Mujugira 2022	Uganda	RCT	Male partners of PWLHIV (pregnant women living with HIV)	Partner distribution in the community	723	489(I:328, C:161)	234(I:159, C:75)
Okoboi 2020	Uganda	Cross-sectional study	MSM	Peer distribution in the community	165	15	150
Ortblad 2017	Uganda	Cluster RCT	FSW	Peer educator distribution in the community	960	120(Direct: 37, Facility: 42, Standard: 41)	840(Direct: 259, Facility: 294, Standard: 287)
Pettifor 2020	South Africa	RCT	Young women and their peers and partners	Peer distribution in the community	1394	287(I:141, C:146)	1107(I:701, C:406)

Study	Country	Study design	Study Population	HIVST Distribution Strategy	Sample size	Seed size	Social network member size
Sha 2022	China	Quasi-experimental study	GBMSM (gay, bisexual, and other MSM)	Peer distribution in the community	359	154(I:92, C:62)	205(I:179, C:26)
Shahmanesh 2021	South Africa	Cluster RCT	Young women (18–24) and all young people (aged 18–30)	Peer distribution in the community	4220	57(I: 38, C: 19)	4163(I: 3065, C: 1098)
Young 2013	The US.	Cluster RCT	MSM	Peer educator distribution in the community	128	16(I:8, C:8)	112(I:55, C:57)
Young 2022	The US.	RCT	MSM	Peer educator distribution in the community	979	79(I:79, C:0)	900((I:450, C:450)
Van Der Elst 2017	Kenya	Cohort	MSM	Peer distribution in the community	1038	11(I:6, C:5)	1027(I:337, C:690)
Zhou 2022	China	RCT	MSM	Peer distribution in the community	653	309(C:102, SD-M:103, SD-M-PR:104)	344(C:58, SD-M:101, SD-M-R:185)

192 **HIVST Distribution Strategy**

193 We classified the social network interventions into three categories based on the people who
194 distributed the test: peers, partners, and peer educators. Twenty-five studies used risk-based
195 framing for caring about peers and partners for their at-risk or disease. Eight studies used asset-
196 based framing because peer educators have strengths and insight.

197

198 Overall, 15 studies recruited index participants and encouraged participants to distribute them to
199 people in their social networks (alters) [23-25, 27, 28, 30, 32, 33, 35, 39, 40, 43-45, 48]. Most
200 studies had multiple HIVST kits provided directly to index participants by healthcare workers
201 (HCWs) for distribution to alters. Two studies used formative research by conducting focus
202 group discussions to collect the necessary data to inform the design of peer-led HIVST
203 interventions [39, 44]. Specifically, the peer training focused on basic counseling, approaching
204 social network members, using HIVST kits, and linkage to HIV services. Ten studies distributed
205 HIVST kits directly from participants to their sexual partners [26, 31, 34, 42, 46, 47, 49-52].
206 Two of these studies additionally provided participants with techniques for negotiating and
207 communicating with their sexual partners about using HIVST kits, and the other two studies
208 explored the impact of financial incentives [50, 52]. Peer educators were recruited in eight
209 studies to provide additional interventions [29, 36-38, 41, 53-55]. The peer educators received
210 training varying in length from 9h-20 weeks, divided into how to provide pre-test and post-test
211 counseling to participants. Pre-test counseling focuses on basic counseling, communication
212 skills, and how to use HIVST. Post-test counseling focuses on interpreting test results, referral
213 skills, and linkage to HIV care services [41, 53-55].

214

215 **Role of Social Network**

216 Social networks played more than one role in these 33 studies. The relatively small size of the at-
217 risk population and the privacy issues make it difficult to reach through routine sampling.

218 Participants distributed HIVST kits within their social circles, and social networks were used to
219 access hard-to-reach individuals to facilitate more comprehensive coverage of potential users
220 who do not typically use the health system [23, 30, 31, 35, 42, 45-47, 50-52]. Secondary
221 distribution of HIVST kits for pregnant women has been more effective than other methods in
222 increasing HIV testing, and it has shown great potential for reaching sexual contacts of newly

223 diagnosed HIV [50, 52].

224

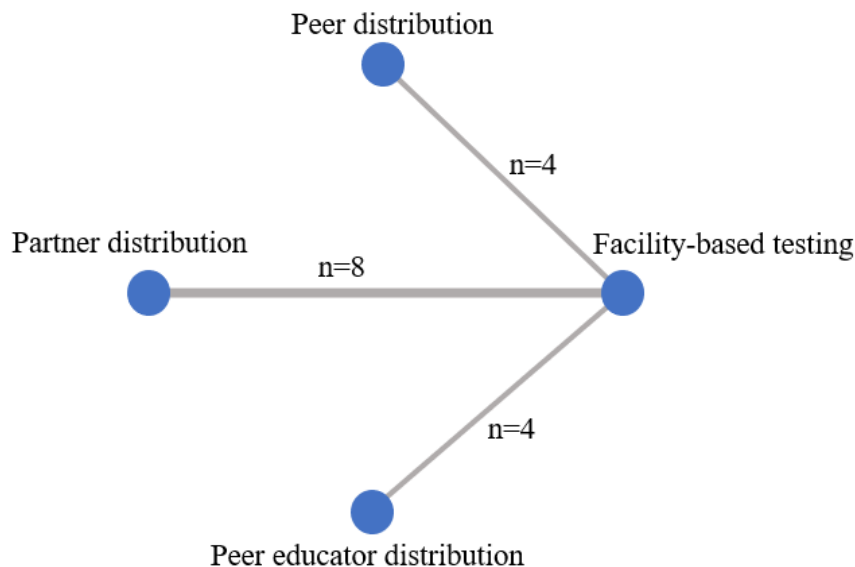
225 As a platform for providing services such as HIVST kits, HIV self-sampling, or home-based HIV
226 testing, social networks also provide a better channel for communication and diffusion. Through
227 this channel, not only can HIV testing be offered to key populations, but it can also provide a
228 platform for communicating HIV risk information while collecting data information on testers in
229 the process. By recruiting index participants, participants are encouraged to distribute HIVST
230 kits to members in their social networks face-to-face or by sharing online links and mail. In most
231 studies, HIVST kits were distributed person-to-person, with participants applying for HIVST kits
232 and then distributing them face-to-face in their social networks [23, 26, 30-34, 42, 46, 47, 49-52].
233 In contrast, a subset of studies were based on social media, an HIVST application link on a
234 phone app [24, 25, 27], or a web-based platform [28, 35, 40] that provides HIVST kits in the
235 form of online ordering and mailing.

236

237 **Uptake of HIV testing**

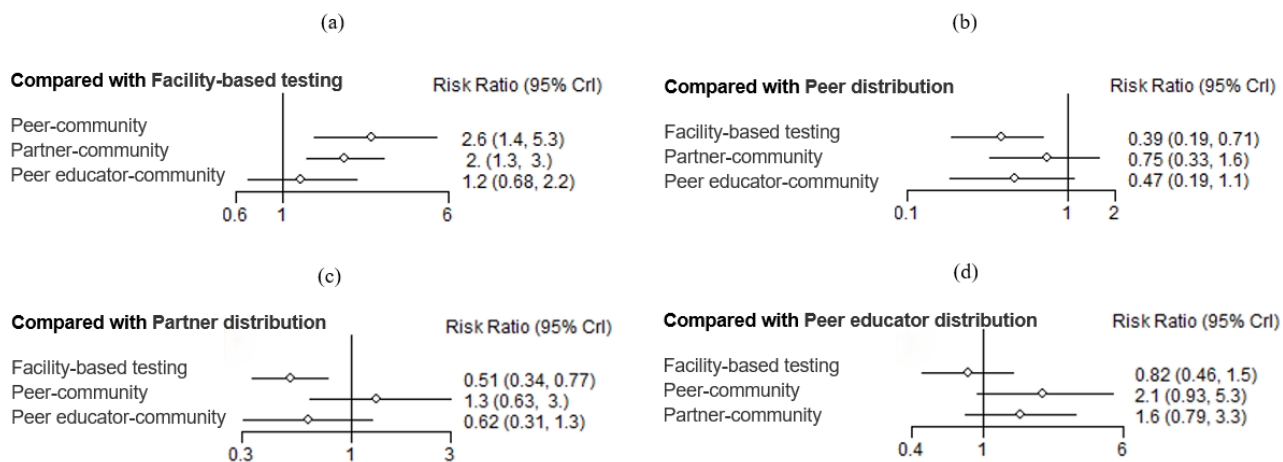
238 Data on the uptake of HIV testing were obtained from 16 studies. Network meta-analysis directly
239 compared differences in the uptake of HIV testing in HIVST kits distributed by peers (4 studies),
240 partners (8 studies), and peer educators (4 studies) in their social networks with the standard
241 HCW-administered facility-based HTS (Figure 2). Network estimates showed that the
242 distribution of peer in social network (RR 2.60, 95% CrI: 1.40-5.30) and partner in sexual
243 network (RR 2.00, 95% CrI: 1.23-2.44) methods resulted in higher HIV testing uptake than
244 facility-based testing (Figure 3). However, the Effect of peer educator distribution on the
245 increased HIV testing uptake was insignificant (RR 1.20, 95% CrI: 0.68-2.22). Compared with
246 facility-based (76% of simulations with the last rank, SUCRA 0.08), ranking probabilities
247 (Figure 4) showed that HIVST kits had the highest uptake among social networks via peer
248 distribution (79% of simulations with the highest rank, SUCRA 0.92), partner distribution (72%
249 of simulations with the second highest rank, SUCRA 0.71) and peer educator distribution (66%
250 of simulations with the third highest rank, SUCRA 0.29) (Supplementary Table 3).

251

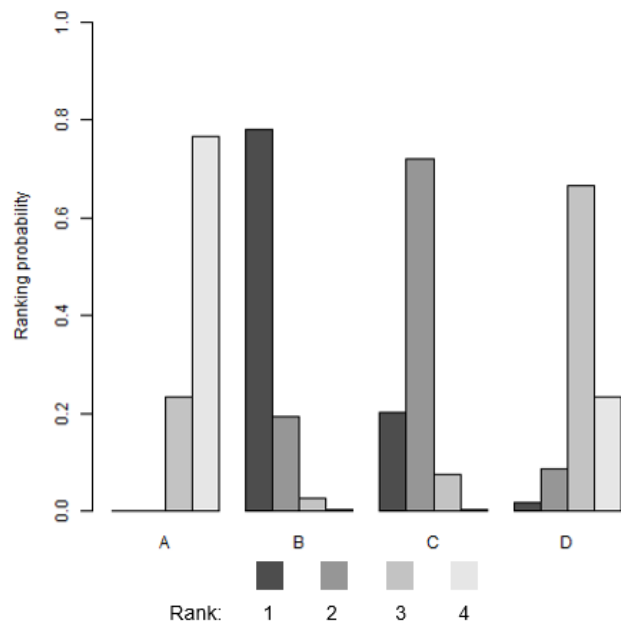


252 **Figure 2. Network map: uptake of HIV testing.** Network map represents the number of studies
 253 contributing to the direct comparisons in the network.

254



255 **Figure 3. Network estimates of HIV testing uptake.**

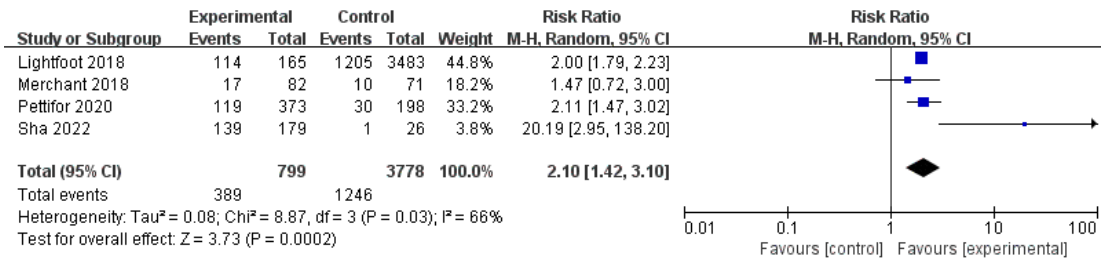


256
257 **Figure 4. HIV testing strategies ranking probabilities for HIV testing uptake.** For each
258 strategy, the colored bars represent the probability that that strategy ranks first, second, third, and
259 so forth. Darker colors represent high ranking (most effective); light colors represent low ranking
260 (least effective). A: Facility-based testing, B: Peer distribution, C: Partner distribution, D: Peer
261 educator distribution.

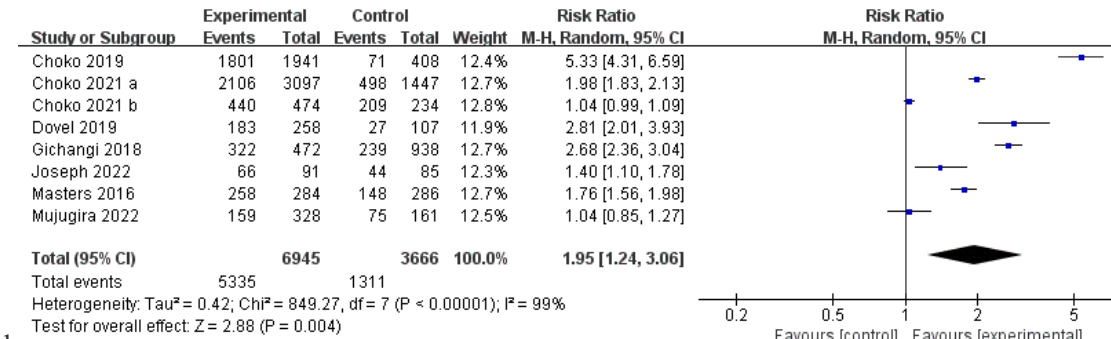
262
263 Data from pairwise meta-analyses also supported this view. Four studies reported uptake of HIV
264 testing through peer distribution [23, 30, 35, 39]. The meta-analysis showed a doubling of HIV
265 testing uptake compared with standard of care (SOC), the standard facility-based testing (RR
266 2.10, 95% CI 1.42-3.10, I2 66%). Data from seven RCTs showed that HIV testing rates were
267 significantly higher when social network interventions were delivered through sexual partners
268 than in the SOC (RR 1.95, 95% CI 1.24-3.06, I2 99%) [31, 42, 46, 47, 50-52]. Similarly, findings
269 showed that the intervention group that used social influence with the help of peer educators to
270 disseminate HIV risk information and attempted to change social norms with the help of peer
271 educators (RR 1.18, 95% CI 1.12, 1.25], I2 48%) had higher uptake of HIV testing than the
272 comparison group (Figure 5) [36, 38, 41, 55].

273
274
275

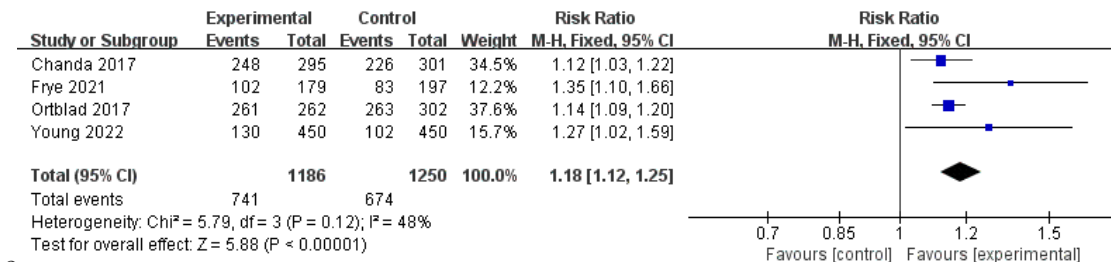
276 a



277



278 b



279 c

280 **Figure 5. Uptake of HIV testing by distribution strategy.** figure 5(a): Peer distribution in
 281 community, figure 5(b): Partner distribution in community, figure 5(c): Peer educator
 282 distribution in community.

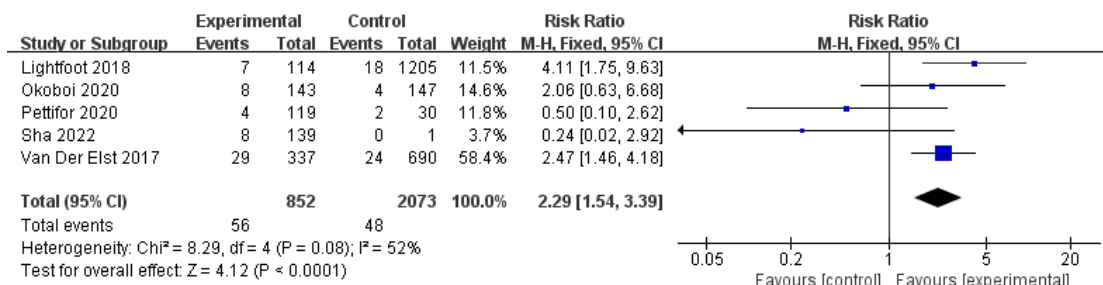
283

284 **HIV seroconversion**

285 Overall, 13 studies reported HIV seroconversion after HIV testing by comparing HIV reaction
286 rates among alters in social networks who received HIVST kits. Five studies that reported
287 differences in HIV seroconversion outcomes based on peer distribution were included [23, 30,
288 39, 43, 48]. Meta-analysis showed significantly higher HIV reaction rates among alters using
289 peer distribution compared to SOC (RR 2.29, 95% CI 1.54-3.39, I² 52%). Data on HIV reaction
290 rates for partner distribution were obtained from seven studies [31, 42, 47, 50-52]. Interventions
291 using partner-distributed HIVST kits showed a higher likelihood of detecting HIV reactivity in
292 the partners of participants (RR 1.45, 95% CI 1.05-2.02, I² 5%). However, when comparing the
293 HIVST distribution strategy using peer educator influence to the comparison group, there
294 appeared to be no difference in the association of finding people living with HIV (RR 0.91, 95%
295 CI 0.74-1.13, I² 0%) (Figure 6) [41, 55].

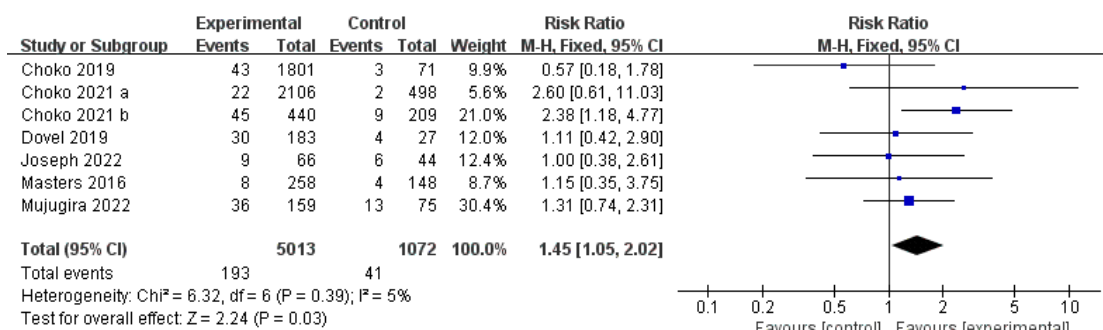
296

297 a



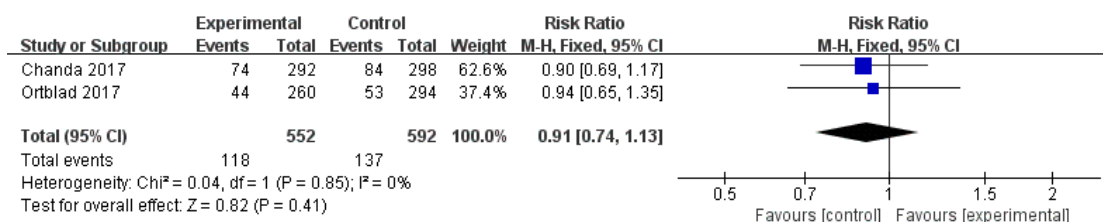
298

299 b



300

301 c



302

303 **Figure 6. HIV seroconversion by HIVST Distribution Strategy.** figure 6(a): Peer distribution
 304 in community, figure 6(b): Partner distribution in community, figure 6(c): Peer educator
 305 distribution in community.

306

307 Linkage to ART or HIV Care among People Living with HIV

308 Four direct comparisons contributed to the meta-analysis of the impact of distribution strategies
 309 on linkage to ART or HIV care among people living with HIV (Supplementary Table 4). All
 310 distribution strategies, whether peer distribution, partner distribution, or peer educator distribution,
 311 has comparable linkage to care as facility-based testing (Combined three distributions: RR 0.91,
 312 95% CI 0.80-1.03, I² 2%). A cohort study directly demonstrated the impact of peer distribution
 313 strategies for delivering HIVST kits on linkage: although comparable to the impact of facility-

314 based testing, men who received confirmatory testing after receiving HIVST tended to receive
315 immediate treatment with ART [48].

316

317 **Discussion**

318 Our systematic review and meta-analysis examined HIVST distribution strategies using social
319 network strategies. This study extends the existing literature by using network meta-analysis to
320 summarize the social network strategies for HIVST, pooling the effectiveness of augmenting
321 testing rates among at-risk populations, and including linkage to care data. Our results indicated
322 that all HIVST distribution strategies effectively increased HIV testing uptake and testing yield
323 compared to traditional HIV testing performed by HCWs in health facilities, whether peer, partner,
324 or peer educator distribution strategies.

325

326 Network-based HIVST distribution could draw on key population assets and community
327 strengths. The results of our study suggest that social network strategies can effectively promote
328 HIV and increase the uptake of HIV testing among at-risk populations. Consistent with past
329 research, HIVST surmounted multifaceted structural impediments besetting HIV testing services,
330 while social network strategies further enhanced coverage on this basis [5, 19, 56]. Social
331 network strategies focus first on risks, recruiting the first at-risk group or people living with HIV
332 for testing, training, and education [14]. Furthermore, social network strategies not only reach
333 these potentially marginalized at-risk populations hidden from current HIV testing practices but
334 also encourage conversations within the social networks about risky behaviors and HIV testing-
335 related information. Based on this asset-based framework, the recruited initial peers are
336 considered sources of wisdom, insight, and strength. Social networks provide greater access to a
337 wide range of risks, health information, and practices, and information can be passed easily and
338 frequently between individuals [57, 58]. In addition, members of the same social network often
339 have similar norms, attitudes, and HIV risk behaviors, and social networks can influence risk and
340 health behaviors through a variety of psychosocial mechanisms and linkage characteristics, such
341 as frequency of contact, duration of contact, social influence, social norms, and social support
342 [59]. Social networks can be used to promote HIVST and to follow up with self-testers. The
343 social influence of peer educators can also be used to disseminate HIV risk information and

344 attempt to change social norms to increase HIV prevention and testing behaviors [36-38].

345 Consequently, the systematic integration of social network strategies and leverage of community
346 strength for promulgating HIVST warrants earnest endorsement to attain comprehensive and
347 recurrent HIV testing.

348
349 Our network meta-analysis showed that HIV testing uptake was highest for distributing HIVST
350 kits through peers and partners. Based on pre-existing contacts, peers and partners spontaneously
351 distribute kits within their social networks [14, 32]. In contrast, peer educators were primarily
352 randomly assigned to groups of recruited participants and then established connections for
353 behavioral interventions [37, 41]. This fact suggests that the distribution strategy of peer
354 educators should be further optimized by considering the dynamics of relationships within the
355 social network of the target population, combining economic costs and social support [60].
356 Future refinements of HIVST distribution strategies should account for factors such as
357 motivation, skill proficiency, self-efficacy, social norms, behavioral patterns, and supplementary
358 interventions to augment the effectiveness of the peer educator approach [61].

359
360 This systematic review and meta-analysis showed that the social network intervention was
361 associated with increased testing yield. Consistent evidence suggests that social network
362 intervention has proven effective in identifying undiagnosed HIV infection in high-risk networks
363 [62, 63]. Compared to healthcare workers, peers, and partners can interact more interpersonal
364 interactions with members of their social networks and provide them with more authentic
365 empathy, validation, and practical advice, thus providing effective social support for
366 undiagnosed HIV infections in high-risk networks and facilitating case identification [60].

367 People living with HIV are an important source of infection for the ongoing transmission of HIV,
368 and increasing the testing rate of finding people living with HIV is essential to facilitate linkages
369 to ART or HIV care and prevention services for populations at high risk of HIV. In addition to
370 assisted partner notification services, case identification should be facilitated by expanding
371 service options, especially through social network strategies to convey relevant information [64].

372
373 We also found that social network-based HIVST distribution strategies and facility-based testing
374 are comparable in linkage to care. However, social network strategies showed significant

375 improvements in the uptake of testing, which positively impacted linkage. In addition, peer-
376 based interventions, including communication links, social support, and monetary incentives,
377 increased the likelihood of linkage to care [65, 66]. The comparable linkages demonstrated the
378 reliability and potential of the social network strategy in improving HIV care services, not only
379 in HIV testing. Future network studies should further consider and evaluate additional robust
380 interventions to support the linkage between post-HIVST testing and HIV care.

381
382 This systematic evaluation and meta-analysis have several limitations. First, 31 of the 33 studies
383 had a high or unclear risk of bias in at least one of the methodological quality assessments. Due
384 to the nature of the intervention and social network strategies to distribute HIVST kits, it was
385 difficult to conduct blinded comparisons of participants assigned to study groups or study
386 allocators. Second, the methods used in the comparison group were not entirely consistent. For
387 example, in the comparison group, either no intervention was provided, or HIVST services were
388 promoted without peer educators or the use of social network strategies to provide general
389 health-related information. We further categorized intervention types to mitigate the
390 heterogeneity and scrutinized measurement heterogeneity before combining the data. Third, the
391 included studies varied widely in terms of intervention duration and time to outcome assessment,
392 leading to potential bias in this meta-analysis.

393
394 The discerned findings primordially and compellingly advocate for the progressive amplification
395 of peer and partner distribution strategies, underpinned by empirical evidence that underscores
396 their remarkable efficacy. First, the assets and community power of the key population should be
397 fully utilized and mobilized. Similarly, in its new recommendations on HIV testing, WHO is
398 calling on countries to increase testing coverage by promoting testing through sexual and social
399 networks [8]. Second, more efficient distribution strategies for peer educators should be further
400 explored, considering economic costs and incorporating the dynamics of relationships within the
401 social networks of the target population. Future HIV prevention interventions could be carried
402 out in partnership with the community to identify trusted and knowledgeable peer educators and
403 train them to be most effective [67]. Finally, along with increasing testing for early detection of
404 people living with HIV, emphasis should be placed on increasing access to ART or HIV care
405 among at-risk populations. Peers play an important role in providing support for linkage to care

406 services. Different additional interventions, such as home-initiated ART care [68], conditional
407 monetary incentives [50, 52], and peer educator navigating [29] could be chosen to improve the
408 linkage after HIVST. It is paramount to acknowledge that the potency of social network
409 interventions is contingent on their continual evolution and alignment with evolving paradigms.
410 To harness the true potential of social networks in curbing HIV transmission, it is incumbent to
411 propel dedicated research endeavors and maintain an ongoing regimen of scrutiny and
412 adaptation. These imperative measures are indispensable in not only curbing the onward
413 trajectory of HIV transmission but also in charting a course that fortifies linkage to ART or HIV
414 care subsequent to HIV infection.

415

416 **Conclusions**

417 This comprehensive systematic review and meta-analysis stand as a testament to social network
418 strategies' viability, acceptance, and efficacy in promoting HIVST. The findings therein
419 substantiate the resounding impact of diverse HIVST distribution strategies, universally
420 augmenting the uptake of HIV testing, facilitating the early identification of cases, and effectively
421 linking to HIV care. It is necessary to capitalize on the assets and community strengths of the key
422 population. The ascendancy of interventions at the social network stratum extends beyond mere
423 testing proficiency; they furnish a dynamic platform for dispensing services and instigating shifts
424 in social norms. Consequently, these transformations precipitate salubrious changes in risk and
425 health behaviors that orchestrate a positive ripple effect on HIV outcomes.

426

427 **Competing interests**

428 The authors declare that they have no conflict of interest.

429

430 **Authors' contributions**

431 W. T. and J. D. designed the review. C. F., Y. D., and S. H. identified relevant studies and extracted
432 data. Y. X., Y. Z. and H. L. analyzed and interpreted data. All other authors (X. H., D. W., J. T.
433 and W. T.) contributed to data interpretation. S. H. and F. J. wrote the first draft of the article. All
434 authors critically revised the article and approved the final version.

435

436 **Acknowledgements**

437 Funding

438 This work was supported by the Key Technologies Research and Development Program
439 (2022YFC2304900-4 to WT), National Institute of Health (R34MH119963, 1UG1HD113156-01,
440 1R25AI170379-01 and R01AI158826 to WT), National Nature Science Foundation of China
441 (81903371 to WT), and CRDF Global (G-202104-67775 to WT). The funders had no role in study
442 design, data collection and analysis, decision to publish, or preparation of the manuscript.

443

444 **Supporting Information**

445 Supporting Information file 1: Supplementary Appendix 1. Search terms.

446 Supporting Information file 2: Supplementary materials.

447

448 **List of abbreviations**

449 ANC Antenatal Care Clinic

450 ART Antiretroviral Therapy

451 CI Confidence interval

452 CrI Credible intervals

453 FSW Female Sex Workers
454 HCW Healthcare Worker
455 HIV Human Immunodeficiency Virus
456 HIVST HIV Self-testing
457 HTS HIV Testing Services
458 MSM Men Who Have Sex with Men
459 PWID People who Inject Drugs
460 RR Relative Risk
461 RCT Randomized Controlled Trial
462 SOC Standard of Care
463 SUCRA Surface under the Cumulative Ranking
464 WHO World Health Organization

465

466 **References**

- 467 1. UNAIDS. The path that ends AIDS: UNAIDS global AIDS update 2023. Geneva: Joint
468 United Nations Programme on HIV/AIDS; 2023.
- 469 2. Stone J, Mukandavire C, Boily MC, Fraser H, Mishra S, Schwartz S, et al. Estimating the
470 contribution of key populations towards HIV transmission in South Africa. *J Int AIDS Soc.*
471 2021;24(1):e25650.
- 472 3. Mukandavire C, Walker J, Schwartz S, Boily MC, Danon L, Lyons C, et al. Estimating the
473 contribution of key populations towards the spread of HIV in Dakar, Senegal. *J Int AIDS Soc.*
474 2018;21 Suppl 5(Suppl Suppl 5):e25126.
- 475 4. Figueroa C, Johnson C, Ford N, Sands A, Dalal S, Meurant R, et al. Reliability of HIV
476 rapid diagnostic tests for self-testing compared with testing by healthcare workers: a systematic
477 review and meta-analysis. *Lancet HIV.* 2018;5(6):e277-e90.
- 478 5. Jamil MS, Eshun-Wilson I, Witzel TC, Siegfried N, Figueroa C, Chitembo L, et al.
479 Examining the effects of HIV self-testing compared to standard HIV testing services in the general
480 population: A systematic review and meta-analysis. *EClinicalMedicine.* 2021;38:100991.

- 481 6. Figueroa C, Johnson C, Verster A, Baggaley R. Attitudes and Acceptability on HIV Self-
482 testing Among Key Populations: A Literature Review. *AIDS Behav.* 2015;19(11):1949-65.
- 483 7. WHO. Consolidated guidelines on HIV, viral hepatitis and STI prevention, diagnosis,
484 treatment and care for key populations. 2022.
- 485 8. WHO, WHO recommends optimizing HIV testing services.
486 <https://www.who.int/news/item/22-07-2023-who-recommends-optimizing-hiv-testing-services>.
- 487 9. Booth RE, Davis JM, Dvoryak S, Brewster JT, Lisovska O, Strathdee SA, et al. HIV
488 incidence among people who inject drugs (PWIDs) in Ukraine: results from a clustered randomised
489 trial. *Lancet HIV.* 2016;3(10):e482-9.
- 490 10. Dennis CL. Peer support within a health care context: a concept analysis. *Int J Nurs Stud.*
491 2003;40(3):321-32.
- 492 11. Zhang Y, Li J, Xie Y, Wu D, Ong J, Marley G, et al. Pay-it-forward incentives for hepatitis
493 virus testing in men who have sex with men: a cluster randomized trial. *Nat Med.* 2023;29(9):2241-
494 7.
- 495 12. Albarracin D, Tannenbaum MB, Glasman LR, Rothman AJ. Modeling structural, dyadic,
496 and individual factors: the inclusion and exclusion model of HIV related behavior. *AIDS Behav.*
497 2010;14(Suppl 2):239-49.
- 498 13. Latkin C, Weeks MR, Glasman L, Galletly C, Albarracin D. A dynamic social systems
499 model for considering structural factors in HIV prevention and detection. *AIDS Behav.*
500 2010;14(Suppl 2):222-38.
- 501 14. Stojanovski K, Naja-Riese G, King EJ, Fuchs JD. A Systematic Review of the Social
502 Network Strategy to Optimize HIV Testing in Key Populations to End the Epidemic in the United
503 States. *AIDS Behav.* 2021;25(9):2680-98.
- 504 15. Ghosh D, Krishnan A, Gibson B, Brown SE, Latkin CA, Altice FL. Social Network
505 Strategies to Address HIV Prevention and Treatment Continuum of Care Among At-risk and HIV-
506 infected Substance Users: A Systematic Scoping Review. *AIDS Behav.* 2017;21(4):1183-207.

- 507 16. CDC, Social Network Strategy for HIV Testing Recruitment Standard Operating
508 Procedures. [https://www.cdc.gov/hiv/effective-interventions/library/social-network-](https://www.cdc.gov/hiv/effective-interventions/library/social-network-strategy/implementation-materials/cdc-hiv-ei-sns-standard-operating-procedures.pdf)
509 [strategy/implementation-materials/cdc-hiv-ei-sns-standard-operating-procedures.pdf](https://www.cdc.gov/hiv/effective-interventions/library/social-network-strategy/implementation-materials/cdc-hiv-ei-sns-standard-operating-procedures.pdf). Accessed
510 August 23rd 2023.
- 511 17. Cao B, Gupta S, Wang J, Hightow-Weidman LB, Muessig KE, Tang W, et al. Social Media
512 Interventions to Promote HIV Testing, Linkage, Adherence, and Retention: Systematic Review
513 and Meta-Analysis. *J Med Internet Res*. 2017;19(11):e394.
- 514 18. Shushtari ZJ, Hosseini SA, Sajjadi H, Salimi Y, Latkin C, Snijders TAB. Social network
515 and HIV risk behaviors in female sex workers: a systematic review. *BMC Public Health*.
516 2018;18(1):1020.
- 517 19. Eshun-Wilson I, Jamil MS, Witzel TC, Glidded DV, Johnson C, Le Trouneau N, et al. A
518 Systematic Review and Network Meta-analyses to Assess the Effectiveness of Human
519 Immunodeficiency Virus (HIV) Self-testing Distribution Strategies. *Clin Infect Dis*.
520 2021;73(4):e1018-e28.
- 521 20. Hutton B, Salanti G, Caldwell DM, Chaimani A, Schmid CH, Cameron C, et al. The
522 PRISMA extension statement for reporting of systematic reviews incorporating network meta-
523 analyses of health care interventions: checklist and explanations. *Ann Intern Med*.
524 2015;162(11):777-84.
- 525 21. Higgins JP, Altman DG, Gøtzsche PC, Jüni P, Moher D, Oxman AD, et al. The Cochrane
526 Collaboration's tool for assessing risk of bias in randomised trials. *Bmj*. 2011;343:d5928.
- 527 22. GA Wells BS, D O'Connell, J Peterson, V Welch, M Losos, P Tugwell. The Newcastle-
528 Ottawa Scale (NOS) for assessing the quality of nonrandomised studies in meta-analyses.
- 529 23. Sha Y, Xiong Y, Ong JJ, Wang Y, Cheng M, Ni Y, et al. Comparing the effectiveness of
530 secondary distribution of HIV/syphilis dual self-testing to testing card referral in promoting HIV
531 testing among gay, bisexual, and other men who have sex with men in Guangzhou, China: a quasi-
532 experimental study. *Sex Health*. 2022;19(4):357-66.

- 533 24. Zhou Y, Lu Y, Ni Y, Wu D, He X, Ong JJ, et al. Monetary incentives and peer referral in
534 promoting secondary distribution of HIV self-testing among men who have sex with men in China:
535 A randomized controlled trial. *PLoS Med.* 2022;19(2):e1003928.
- 536 25. Li S, Zhang J, Mao X, Lu T, Gao Y, Zhang W, et al. Feasibility of Indirect Secondary
537 Distribution of HIV Self-test Kits via WeChat Among Men Who Have Sex With Men: National
538 Cross-sectional Study in China. *J Med Internet Res.* 2021;23(10):e28508.
- 539 26. Zhang J, Tucker J, Tang W, Wang H, Chu Z, Hu Q, et al. Internet-Based HIV Self-Testing
540 Among Men Who Have Sex With Men Through Pre-exposure Prophylaxis: 3-Month Prospective
541 Cohort Analysis From China. *J Med Internet Res.* 2021;23(8):e23978.
- 542 27. Wu D, Zhou Y, Yang N, Huang S, He X, Tucker J, et al. Social Media-Based Secondary
543 Distribution of Human Immunodeficiency Virus/Syphilis Self-testing Among Chinese Men Who
544 Have Sex with Men. *Clin Infect Dis.* 2021;73(7):e2251-e7.
- 545 28. Kwan TH, Chan DPC, Wong SYS, Lee SS. Implementation Cascade of a Social Network–
546 Based HIV Self-testing Approach for Men Who Have Sex with Men: Cross-sectional Study.
547 *Journal of Medical Internet Research.* 2023;25.
- 548 29. Shahmanesh M, Mthiyane TN, Herbst C, Neuman M, Adeagbo O, Mee P, et al. Effect of
549 peer-distributed HIV self-test kits on demand for biomedical HIV prevention in rural KwaZulu-
550 Natal, South Africa: a three-armed cluster-randomised trial comparing social networks versus
551 direct delivery. *BMJ Glob Health.* 2021;6(Suppl 4).
- 552 30. Pettifor A, Lippman SA, Kimaru L, Haber N, Mayakayaka Z, Selin A, et al. HIV self-
553 testing among young women in rural South Africa: A randomized controlled trial comparing
554 clinic-based HIV testing to the choice of either clinic testing or HIV self-testing with secondary
555 distribution to peers and partners. *EClinicalMedicine.* 2020;21:100327.
- 556 31. Joseph Davey DL, Wall KM, Naidoo N, Naidoo D, Xaba G, Seroo C, et al. HIV testing
557 and linkage to ART following secondary distribution of HIV self-test kits to male partners of
558 women living with HIV: a pilot randomized control trial in Mpumalanga, South Africa. *J Int AIDS*
559 *Soc.* 2022;25(6):e25937.

- 560 32. Kitenge M, Laxmeshwar C, Bermudez Aza E, Ford-Kamara E, Van Cutsem G, Gcwensa
561 N, et al. Acceptability of unsupervised peer-based distribution of HIV oral self-testing for the hard-
562 to-reach in rural KwaZulu Natal, South Africa: Results from a demonstration study. *PLoS One*.
563 2022;17(3):e0264442.
- 564 33. Lippman SA, Lane T, Rabede O, Gilmore H, Chen YH, Mlotshwa N, et al. High
565 Acceptability and Increased HIV-Testing Frequency After Introduction of HIV Self-Testing and
566 Network Distribution Among South African MSM. *J Acquir Immune Defic Syndr*.
567 2018;77(3):279-87.
- 568 34. Zishiri V, Conserve DF, Haile ZT, Corbett E, Hatzold K, Meyer-Rath G, et al. Secondary
569 distribution of HIV self-test kits by HIV index and antenatal care clients: implementation and
570 costing results from the STAR Initiative in South Africa. *BMC Infectious Diseases*. 2022;22.
- 571 35. Merchant RC, Clark MA, Liu T, Romanoff J, Rosenberger JG, Bauermeister J, et al.
572 Comparison of Home-Based Oral Fluid Rapid HIV Self-Testing Versus Mail-in Blood Sample
573 Collection or Medical/Community HIV Testing By Young Adult Black, Hispanic, and White
574 MSM: Results from a Randomized Trial. *AIDS Behav*. 2018;22(1):337-46.
- 575 36. Young SD, Cumberland WG, Singh P, Coates T. A Peer-Led Online Community to
576 Increase HIV Self-Testing Among African American and Latinx MSM: A Randomized Controlled
577 Trial. *J Acquir Immune Defic Syndr*. 2022;90(1):20-6.
- 578 37. Young SD, Cumberland WG, Lee SJ, Jaganath D, Szekeres G, Coates T. Social networking
579 technologies as an emerging tool for HIV prevention: a cluster randomized trial. *Annals of internal
580 medicine*. 2013;159(5):318 - 24.
- 581 38. Frye V, Nandi V, Paige MQ, McCrossin J, Lucy D, Gwadz M, et al. TRUST: Assessing
582 the Efficacy of an Intervention to Increase HIV Self-Testing Among Young Black Men Who have
583 Sex with Men (MSM) and Transwomen. *AIDS Behav*. 2021;25(4):1219-35.
- 584 39. Lightfoot MA, Campbell CK, Moss N, Treves-Kagan S, Agnew E, Kang Dufour MS, et al.
585 Using a Social Network Strategy to Distribute HIV Self-Test Kits to African American and Latino
586 MSM. *J Acquir Immune Defic Syndr*. 2018;79(1):38-45.

- 587 40. MacGowan RJ, Chavez PR, Borkowf CB, Owen SM, Purcell DW, Mermin JH, et al. Effect
588 of Internet-Distributed HIV Self-tests on HIV Diagnosis and Behavioral Outcomes in Men Who
589 Have Sex With Men: A Randomized Clinical Trial. *JAMA Intern Med.* 2020;180(1):117-25.
- 590 41. Ortblad K, Kibuuka Musoke D, Ngabirano T, Nakitende A, Magoola J, Kayiira P, et al.
591 Direct provision versus facility collection of HIV self-tests among female sex workers in Uganda:
592 A cluster-randomized controlled health systems trial. *PLoS Med.* 2017;14(11):e1002458.
- 593 42. Mujugira A, Stein G, Nakyanzi A, Boyer J, Donnell D, Naddunga F, et al. PARTNER
594 TESTING with HIV SELF-TEST DISTRIBUTION by UGANDAN PREGNANT WOMEN with
595 HIV. *Topics in Antiviral Medicine*2022. p. 361.
- 596 43. Okoboi S, Lazarus O, Castelnuovo B, Nanfuka M, Kambugu A, Mujugira A, et al. Peer
597 distribution of HIV self-test kits to men who have sex with men to identify undiagnosed HIV
598 infection in Uganda: A pilot study. *PLoS One.* 2020;15(1):e0227741.
- 599 44. Matovu JKB, Bogart LM, Nakabugo J, Kagaayi J, Serwadda D, Wanyenze RK, et al.
600 Feasibility and acceptability of a pilot, peer-led HIV self-testing intervention in a hyperendemic
601 fishing community in rural Uganda. *PLoS One.* 2020;15(8):e0236141.
- 602 45. Nasuuna E, Namimbi F, Muwanguzi PA, Kabatesi D, Apolot M, Muganzi A, et al. Early
603 observations from the HIV self-testing program among key populations and sexual partners of
604 pregnant mothers in Kampala, Uganda: A cross sectional study. *PLOS Glob Public Health.*
605 2022;2(1):e0000120.
- 606 46. Gichangi A, Wambua J, Mutwiwa S, Njogu R, Bazant E, Wamicwe J, et al. Impact of HIV
607 Self-Test Distribution to Male Partners of ANC Clients: Results of a Randomized Controlled Trial
608 in Kenya. *J Acquir Immune Defic Syndr.* 2018;79(4):467-73.
- 609 47. Masters SH, Agot K, Obonyo B, Napierala Mavedzenge S, Maman S, Thirumurthy H.
610 Promoting Partner Testing and Couples Testing through Secondary Distribution of HIV Self-Tests:
611 A Randomized Clinical Trial. *PLoS Med.* 2016;13(11):e1002166.

- 612 48. van der Elst E, Shally M, Oduor C, Chirro O, Ibrahim F, Kina B, et al. Peer -led oral HIV
613 self-testing finds undiagnosed HIV among GBMSM in Malindi, Kenya. CROI 2017At:
614 WASHINGTON STATE CONVENTION CENTER2017.
- 615 49. Thirumurthy H, Masters SH, Mavedzenge SN, Maman S, Omanga E, Agot K. Promoting
616 male partner HIV testing and safer sexual decision making through secondary distribution of self-
617 tests by HIV-negative female sex workers and women receiving antenatal and post-partum care in
618 Kenya: a cohort study. *Lancet HIV*. 2016;3(6):e266-74.
- 619 50. Choko AT, Fielding K, Johnson CC, Kumwenda MK, Chilongosi R, Baggaley RC, et al.
620 Partner-delivered HIV self-test kits with and without financial incentives in antenatal care and
621 index patients with HIV in Malawi: a three-arm, cluster-randomised controlled trial. *Lancet Glob
622 Health*. 2021;9(7):e977-e88.
- 623 51. Dovel K, Balakasi K, Shaba F, Phiri K, Oforjebe O, Gupta S, et al. A randomized trial on
624 index HIV self-testing for partners of ART clients in Malawi. *Topics in Antiviral Medicine*2019.
625 p. 36s-7s.
- 626 52. Choko AT, Corbett EL, Stallard N, Maheswaran H, Lepine A, Johnson CC, et al. HIV self-
627 testing alone or with additional interventions, including financial incentives, and linkage to care
628 or prevention among male partners of antenatal care clinic attendees in Malawi: An adaptive multi-
629 arm, multi-stage cluster randomised trial. *PLoS Med*. 2019;16(1):e1002719.
- 630 53. Nguyen TV, Duong CT, Vo HS, Le Ai KA, Nguyen DL, Truong TL, et al. Community-
631 led HIV self-testing, with and without assistance, successfully reaches key populations and their
632 partners in Viet Nam. *Journal of the International AIDS Society*2019. p. 56.
- 633 54. Nguyen VTT, Phan HTT, Kato M, Nguyen QT, Le Ai KA, Vo SH, et al. Community-led
634 HIV testing services including HIV self-testing and assisted partner notification services in
635 Vietnam: lessons from a pilot study in a concentrated epidemic setting. *Journal of the International
636 AIDS Society*. 2019;22(S3).
- 637 55. Chanda MM, Ortblad KF, Mwale M, Chongo S, Kanchele C, Kamungoma N, et al. HIV
638 self-testing among female sex workers in Zambia: A cluster randomized controlled trial. *PLoS
639 Med*. 2017;14(11):e1002442.

- 640 56. Choko AT, MacPherson P, Webb EL, Willey BA, Feasy H, Sambakunsi R, et al. Uptake,
641 Accuracy, Safety, and Linkage into Care over Two Years of Promoting Annual Self-Testing for
642 HIV in Blantyre, Malawi: A Community-Based Prospective Study. *PLoS Med.*
643 2015;12(9):e1001873.
- 644 57. Rothenberg RB, Potterat JJ, Woodhouse DE, Muth SQ, Darrow WW, Klovdahl AS. Social
645 network dynamics and HIV transmission. *Aids.* 1998;12(12):1529-36.
- 646 58. Klovdahl AS, Potterat JJ, Woodhouse DE, Muth JB, Muth SQ, Darrow WW. Social
647 networks and infectious disease: the Colorado Springs Study. *Soc Sci Med.* 1994;38(1):79-88.
- 648 59. Berkman LF, Glass T, Brissette I, Seeman TE. From social integration to health: Durkheim
649 in the new millennium. *Soc Sci Med.* 2000;51(6):843-57.
- 650 60. Qiao S, Li X, Stanton B. Social support and HIV-related risk behaviors: a systematic
651 review of the global literature. *AIDS Behav.* 2014;18(2):419-41.
- 652 61. Aroke H, Buchanan A, Katenka N, Crawford FW, Lee T, Halloran ME, et al. Evaluating
653 the Mediating Role of Recall of Intervention Knowledge in the Relationship Between a Peer-
654 Driven Intervention and HIV Risk Behaviors Among People Who Inject Drugs. *AIDS Behav.*
655 2023;27(2):578-90.
- 656 62. Friedman MR, Coulter RW, Silvestre AJ, Stall R, Teplin L, Shoptaw S, et al. Someone to
657 count on: social support as an effect modifier of viral load suppression in a prospective cohort
658 study. *AIDS Care.* 2017;29(4):469-80.
- 659 63. Kimbrough LW, Fisher HE, Jones KT, Johnson W, Thadiparthi S, Dooley S. Accessing
660 social networks with high rates of undiagnosed HIV infection: The social networks demonstration
661 project. *Am J Public Health.* 2009;99(6):1093-9.
- 662 64. Tih PM, Temgbait Chimoun F, Mboh Khan E, Nshom E, Nambu W, Shields R, et al.
663 Assisted HIV partner notification services in resource-limited settings: experiences and
664 achievements from Cameroon. *J Int AIDS Soc.* 2019;22 Suppl 3(Suppl Suppl 3):e25310.
- 665 65. Hlongwa M, Hlongwana K, Makhunga S, Choko AT, Dzinamarira T, Conserve D, et al.
666 Linkage to HIV Care Following HIV Self-testing Among Men: Systematic Review of Quantitative

- 667 and Qualitative Studies from Six Countries in Sub-Saharan Africa. *AIDS Behav.* 2023;27(2):651-
668 66.
- 669 66. Zaller ND, Fu JJ, Nunn A, Beckwith CG. Linkage to care for HIV-infected heterosexual
670 men in the United States. *Clin Infect Dis.* 2011;52 Suppl 2(Suppl 2):S223-30.
- 671 67. McGowan M, Roche SD, Nakitende A, Wachinger J, Nanyiri E, Amongin J, et al.
672 Understanding how social support influences peer-delivered HIV prevention interventions among
673 Ugandan female sex workers: a case study from HIV self-testing. *BMC Public Health.*
674 2022;22(1):427.
- 675 68. MacPherson P, Lalloo DG, Webb EL, Maheswaran H, Choko AT, Makombe SD, et al.
676 Effect of optional home initiation of HIV care following HIV self-testing on antiretroviral therapy
677 initiation among adults in Malawi: a randomized clinical trial. *Jama.* 2014;312(4):372-9.
- 678