

1 **The role of maternal secretor status and human milk oligosaccharides on early childhood development:**
2 **A systematic review and meta-analysis**

3 Martin M. Mulinge ^{1*}, Hellen K. Abisi ¹, Hellen M. Kabahweza ², Lydia Okutoyi ³, Dalton C. Wamalwa ⁴,
4 Ruth W. Nduati ⁴

5
6 ¹ Department of Biochemistry, School of Medicine, University of Nairobi, Nairobi, Kenya

7 ² Department of Pediatric Hematology & Oncology, Joint Clinical Research Centre, Kampala, Uganda

8 ³ Department of Health Care Quality, Kenyatta National Hospital, Nairobi, Kenya

9 ⁴ Department of Paediatrics and Child Health, University of Nairobi, Nairobi, Kenya

10

11 *** Correspondence:** Martin M Mulinge, University of Nairobi, P.O Box 30197 - 00100, Kenya

12 Email: mmulinge@uonbi.ac.ke

13

14

15 ABSTRACT

16 Breast milk is the gold standard of infant nutrition, delivering nutrients and bioactive molecules as needed to
17 support optimal infant growth and neurodevelopment. Increasing evidence links the human milk
18 oligosaccharides (HMOs) to these early childhood development milestones. In this PRISMA-compliant
19 systematic review and meta-analysis, we summarised evidence on HMOs and infant brain development,
20 physical growth, and cognitive development. In addition, we compared HMO concentrations between secretor
21 and non-secretor mothers. Searches in PubMed, Scopus, and Web of Science yielded 245 articles, 27 of which
22 were included in the systematic review and 12 in the meta-analysis. The meta-analysis revealed a substantial
23 between-study heterogeneity, $I^2 = 97.3\%$. The pooled effect was 0.21 (95% CI, -0.41 - 0.83), $p = 0.484$,
24 indicating that secretors had higher HMO concentrations, though this difference was not statistically
25 significant. At one month of age, 2'FL, 3FL, and 3'SL play an important role in brain maturation and thus play
26 a critical role in cognitive development. Secretors secrete higher concentrations of 2'FL and 3'SL, explaining
27 the benefits to infants of secretor mothers. Growth velocity was correlated to fucosylated and sialylated HMO
28 concentrations, with lower concentrations linked to stunting. In conclusion, evidence from the systematically
29 reviewed articles indicates that HMOs are important for a child's early development, but the extent to which
30 they have an impact is dependent on maternal secretor status.

31 Keywords: brain development; breastfeeding; cognitive development; human milk oligosaccharides; infant
32 growth; secretor

33

34 **Abbreviations:** 2'FL, 2-fucosyllactose; 3FL, 3-fucosyllactose; DFLac, difucosyllactose; DFLNH,
35 difucosyllacto-N-hexaose; DFLNT, difucosyllacto-N-tetraose; FLNH, fucosyllacto-N-hexaose; LNFP I, lacto-
36 N-fucopentaose I; LNFP II, lacto-N-fucopentaose II; LNFP III, lacto-N-fucopentaose III; 3'SL, 3-
37 sialyllactose; 6'SL, 6-sialyllactose; DSLNT, disialyllacto-N-tetraose; DSLNH, disialyllacto-N-hexaose; LST
38 b, sialyllacto-N-tetraose b; LST c, sialyllacto-N-tetraose c; FDSLNH, fucodisialyllacto-N-hexaose; LNH,
39 lacto-N-hexaose; LNnT, lacto-N-neotetraose; LNT, lacto-N-tetraose

40 INTRODUCTION

41 Breastfeeding has undisputed benefits for all aspects of early childhood growth and development, and it is also
42 known that breastfed infants of secretor mothers benefit more than those breastfed by non-secretor mothers
43 [1,2]. In fact, breastfeeding is the gold standard of infant nutrition and is crucial for early childhood
44 development. Suboptimal breastfeeding can disrupt physical growth and neurodevelopment, potentially
45 leading to life-long consequences [3]. The benefit of human milk is the result of millions of years of evolution,
46 which resulted in a perfect multifunctional fluid composed of macronutrients, micronutrients, bioactive
47 molecules, and microbiota [4]. Among the bioactive molecules are human milk oligosaccharides (HMOs),
48 which are non-digestible glycans that have been shown to play a significant role in the stimulation of
49 microbiota growth [5,6]. It is therefore important to conduct an evidence synthesis from the published
50 literature on the role of HMOs on infant physical growth and brain development to establish their contribution
51 to these early childhood development milestones.

52 It is now known that HMOs are composed of galactose, glucose, fucose, N-acetylglucosamine, and the sialic
53 acid derivative N-acetyl-neuraminic acid, with twelve possible linkages [7]. They are synthesized by
54 lactocytes or imported into milk from the blood supply of the breasts based on infant needs, with colostrum
55 having the highest concentration (>20 g/L) and mature milk having a lower concentration (5-14g/L) [8,9]. It is
56 important to note that HMO composition varies between mothers and is influenced by secretor status,
57 geographic region, season, maternal diet and BMI, gestational age, and duration of lactation [10]. The genetic
58 variation responsible for differences in HMO profiles and concentrations has been mapped to chromosome 19,
59 with other mutations discovered on chromosomes 4, 8, 10, and 11 [11]. Maternal genetics is important because
60 secretor mothers express the FUT2 gene and thus produce milk with an abundance of α 1-2 linked fucose
61 moieties such as 2'FL and LNFP I, whereas non-secretor mothers produce little or no such HMOs [12].
62 Mothers who are Lewis positive express the FUT3 gene and produce milk containing oligosaccharides with
63 α 1-3 and α 1-4 linkages to fucose such as 3FL, and LNFP II [2,13].

64 Differences in HMO production based on secretor status have been linked to stimulation of body growth and
65 brain development in the first six months of life [14–16]. Specific HMOs have been linked to infant growth
66 and anthropometry in both high- and low-income populations [17,18]. Another aspect of child development is
67 brain development, which begins a few weeks after conception and continues until the early postnatal years.
68 HMOs are thought to promote early brain development by acting as prebiotics, which are metabolized by gut
69 microbiota and transported from the gut to the brain via the vagus nerve, where they affect brain functions
70 [19,20]. These brain development functions have been linked to sialic acid, which is abundant in HMOs.
71 Notably, sialic acid is an essential nutrient for brain development because it crosses the blood-brain barrier and
72 reaches the frontal cortex grey matter, where it is involved in ganglioside formation and myelination, both of
73 which are key components of developing cortical grey matter and white matter [21]. Therefore, it is critical to

74 identify HMOs that are important in infant growth and prioritize the synthetic HMOs that can be included in
75 formulas cognizant of the fact that some HMOs may increase or mitigate the risk of excessive weight gain and
76 obesity in childhood which persists in adulthood. As a result, it is critical to identify HMOs that are important
77 in infant growth and neurodevelopment, given that technology exists to synthesize HMOs, which can be used
78 as a supplement on infants who receive inadequate breastmilk.

79 A review of published systematic reviews up to June 2023 yielded 5 articles relevant to this topic. Two studies
80 explored the effect of breastfeeding on infant body composition [22,23], while three articles focused on the
81 role of HMOs on neurodevelopment and cognitive functions in children [24–26]. All of these systematic
82 reviews address the effect of human milk components on either infant growth or neurodevelopment, but none
83 have systematically evaluated and synthesized evidence on the effect of HMOs on both infant growth and
84 cognitive development, which are two intertwined concepts of early human development. The primary goal of
85 this systematic review is to summarize evidence on the influence of HMOs on brain development, infant
86 growth velocity and cognitive development using Preferred Reporting Items for Systematic Reviews and
87 Meta-analyses (PRISMA) guidelines. The secondary goal was to perform meta-analyses on HMO
88 concentration differences between secretors and non-secretors, as well as to determine between-study
89 heterogeneity.

90

91 **METHODS**

92 The PRISMA guidelines were followed when conducting this systematic review and meta-analysis [27]. An
93 ethical review was not necessary because this was a review of studies that had already been published.

94 **Data sources and search strategy**

95 The literature search was conducted by HK. Articles published in English from three databases (PubMed,
96 Scopus and Web of Science) using identified keywords and index terms. The search terms were divided into
97 three concepts, combined with the boolean phrases “AND” between concepts and “OR” within concepts: [1]
98 breastfeeding AND [2] human milk oligosaccharides OR human milk sugars AND [3] infant growth OR brain
99 development OR neurodevelopment OR cognitive development. The search was limited to articles published
100 from 2000 informed by an extensive review published Kunz and colleagues focusing on the structural,
101 functional and metabolic aspects of HMOs [8], up to June 30, 2023. We conducted the search and limited the
102 selection to original articles published in English, excluding grey literature, using the syntax shown in
103 supplementary table 1. The search terms used on PubMed were modified for Scopus and Web of Science
104 database searches.

105 **Eligibility criteria**

106 We developed a Population, Intervention, Comparators, Outcome, and Study design approach as the eligibility
107 criteria, determined by the following research question: What effect do HMOs in human milk [Intervention]
108 have on brain development, infant growth velocity, and neurodevelopment [outcomes] in breastfed infants
109 [population]? Population: studies that included nursing mothers and their infants were eligible. Intervention:
110 exposure to HMOs via breastfeeding. Comparators: Secretors vs non-secretor mothers. Outcome: brain
111 development, infant growth velocity and neurodevelopment. Study design: observational and intervention
112 studies. Exclusion: Inappropriate study types (animal studies, in vitro studies, abstracts from conferences,
113 reviews, and meta-analyses), as well as articles that did not link HMOs to brain development, infant growth
114 rate, or cognitive development. Two authors (MM and HA) conducted the literature selection for eligibility by
115 removing all undoubtedly irrelevant articles before using rayyan (<http://rayyan.qcri.org>), a web tool that
116 speeds up the screening process by multiple authors concurrently [28].

117 **Data extraction**

118 The data extracted from each article included: author, year of publication, country, study design, population
119 size (n), milk samples (n), HMO profiled (n), HMO profiling technique, proportion of secretors (%) and non-
120 secretors mothers (%), and effect of HMOs on brain development, growth velocity and cognitive development.

121 MM & HA independently extracted data into Microsoft excel template. When there were disagreements, a
122 consensus was reached after discussing with LO.

123 **Quality Assessment**

124 The study's quality was independently assessed by MM, HA, and HK. A majority of the studies were
125 observational and therefore Newcastle-Ottawa Scale (NOS) was used to assess the risk of bias [29]. The NOS
126 is a three-domain scale that assesses participant selection, comparability, and outcome. Each study may
127 receive up to four points in the selection section (if the study is truly representative of the community and
128 prospective) and three points in the outcome section (if outcome measures data are collected as accurately as
129 possible and the cohort follow-up rate is >80%). Depending on the adjustment for confounders, a maximum of
130 two points can be awarded for the comparability section. As a result, a study can be graded from 0 to 9. A
131 high-quality study will receive 8-9 points, a medium-quality study will receive 6-7 points, and a low-quality
132 study will receive 6 points. Cross-sectional studies receive up to 6 stars, while longitudinal studies receive up
133 to 9 stars.

134 **Data analysis**

135 The primary goal of all of the studies was to determine the effect of breastmilk HMOs on brain development,
136 infant growth velocity, or cognitive development of breastfed infants. If means and standard deviations (SD)
137 for HMO concentrations were not reported, they were calculated from the median and (IQR) using an online
138 calculator <https://www.math.hkbu.edu.hk/~tongt/papers/median2mean.html>. A weighted mean was computed
139 using the Hmisc R package to determine the proportion of secretor versus non-secretor mothers. To compare
140 concentrations between secretor and non-secretor mothers, meta-analyses were performed using the meta R
141 package. The majority of studies were cross-sectional, but if longitudinal, the earliest timepoint was used. The
142 standardized mean difference (SMD) was used as the outcome measure to assess statistical heterogeneity in
143 the studies that were included in the meta-analysis. Since we expected significant between-study
144 heterogeneity, we used a random-effects model to pool effect sizes. The heterogeneity variance τ^2 was
145 estimated using the restricted maximum likelihood (REML) estimator. Because percentages are easier to
146 report, the I^2 statistic is reported in addition to the τ^2 statistic. The confidence interval around the pooled effect
147 was computed using Knapp-Hartung adjustments. Studentized residuals and Cook's distances were used to
148 identify whether studies were outliers and/or influential in the context of the model. Publication bias was
149 assessed through the Egger weighted regression and visualized using funnel plots.

150

151 **RESULTS**

152 **Eligible studies**

153 A PRISMA flowchart of the study selection process is shown in Figure 1. HK conducted an initial search in the
154 three databases, and the results were 245 articles. After the duplicates were removed, 176 articles were left. After
155 evaluating titles and abstracts for study type, or irrelevance, a further 61 articles were eliminated. MM and HK
156 downloaded the full texts of the remaining 69 articles and reviewed them for eligibility. At this point, 42 articles
157 were removed from consideration because they did not meet the inclusion criteria, leaving only 27 articles in the
158 systematic review: [17,18,38–47,30,48–54,31–37]. Additionally, 12 studies that compared HMO
159 concentrations in secretors and non-secretor mothers were included in the meta-analysis [30,31,42,43,48,33–
160 36,38–41].

161 **Quality assessment**

162 According to the NOS findings (Supplemental Table 2), 17 studies (71%) had medium quality, which was
163 attributed to higher scores in comparability and outcome aspects. The main reason for the lower-quality
164 studies was a lack of detail about potential baseline differences between groups or confounding variables. The
165 aspect of outcome (HMO profile) within the NOS was adequately conducted in most studies in accordance
166 with the study's research question.

167 **Study characteristics**

168 Table 1 summarizes the sociodemographic and HMO data from the 27 studies that were included in this
169 review. The selected studies were conducted in 21 countries: Australia [31,43]; Bangladesh [53]; Brazil
170 [36,50]; China [32,41]; Denmark [54]; Finland [30]; France [48]; Gambia [18]; Germany [39]; Kenya [42];
171 Malawi [47,51]; Netherlands [44]; Philippines [52]; Singapore [33]; Spain [40]; Sweden [49]; and USA
172 [17,34,35,37,38,45]. In addition, there was one European Union study involving milk samples collected from
173 France, Italy, Norway, Portugal, Romania, Spain and Sweden [46]. A total of 7,648 milk samples were
174 examined in the 27 studies, which involved 4,066 mothers and 4,103 infants. The differences between mothers
175 and infants are due to twin pregnancies. The weighted mean of secretor mothers was 77.8% (95% CI, 60.3-
176 95.3).

177 **Pooled effect and Heterogeneity of the reported results**

178 Twelve articles comparing HMO concentrations in secretor and non-secretor mothers were included in the
179 meta-analysis. Overall, the pooled Hedges' g (bias corrected standardised mean difference) was 0.21 (95% CI,
180 -0.41-0.83), with the majority of estimates being positive. In the context of our meta-analysis, this indicates a
181 small effect, with secretors having higher HMO concentrations than non-secretors, but the difference between

182 the two groups is not statistically significant, $p = 0.48$. Moreover, the 95% prediction interval ranged from $g =$
183 -2.47 to 2.89 , indicating that, although the average outcome is estimated to be positive, in some studies the
184 true outcome may in fact be negative. The REML method estimated a substantial between-study heterogeneity
185 variance (I^2 value of 97.3% (95% CI, 96.6-97.9), $p < .001$). Looking at $\tau^2 = 1.54$ (95% CI, 0.85-3.62), $p < .001$,
186 we can see that the confidence interval does not include zero, indicating that the variance of true effect sizes is
187 significantly greater than zero (Figure 2). According to Higgins and Thompson's I^2 statistic, 15/19 HMOs
188 profiled were generated by studies with moderate to substantial heterogeneity. The τ^2 statistic included a zero
189 in the remaining HMOs, indicating homogeneity (Table 2). The g of 2'FL produced exclusively by secretors
190 was 2.8 (95% CI, 2.40-3.20), $p < .001$. Other key HMOs with significantly higher bias corrected SMDs in
191 secretors were LNFP-1, 1.45 (95% CI, 1.08-1.82), $p < .001$, and DFlac, 2.78 (95% CI, 0.63-4.97) $p = 0.024$.
192 Non-secretor mothers had significantly higher concentrations of the following HMOs compared to secretor
193 mothers: LNFP II, -1.97 (95% CI, to -2.92 to -1.02), $p = < .001$ and FDSLNH, -2.07, (95% CI, -2.58 to -1.57),
194 $p < .001$. The concentrations of three key HMOs involved in early childhood development (3'SL, 3FL, and
195 6'SL) are highlighted. 3'SL concentrations were higher in secretor mothers, but the averaged bias corrected
196 SMD did not differ significantly from zero, 0.21, (95% CI, -0.17-0.59), $p = 0.23$, while 3FL and 6'SL
197 concentrations were higher in secretors and non-secretors, respectively (Table 2). An examination of the
198 studentized residuals revealed that one study [38], was a significant outlier that influenced the pooled statistic.
199 Although the mean was not particularly extreme, the narrow standard deviations influenced its weight on the
200 overall pooled effect. When it was removed from the analysis of studies profiling 2'FL and 3'SL, the value of 2
201 decreased from 13.8 to 0.3 for 2'FL and from 10.6 to 0.19 for 3'SL. The pooled effect of $g = 2.8$ was slightly
202 lower than our initial estimate of $g = 3.8$ for 2'FL and 0.21 from 1.21 for 3'SL, but it is still within the same
203 order of magnitude (Supplementary Table 3). There was no evidence of outlier HMOs in the final fitted
204 model. Eggers' test did not indicate the presence of funnel plot asymmetry: intercept 2.29 (95% CI, -3.49-
205 8.07), $t = 0.78$, $p = 0.44$, which is consistent with funnel plot (Figure 3).

206 **Analytical methods for characterizing HMOs** Various analytical techniques were used to identify HMOs,
207 depending on the researchers' goals. The majority of the studies (14/27) used high-performance liquid
208 chromatography (HPLC). 4/27 studies used high-pH anion exchange chromatography (HPAEC), while 7/27
209 used mass spectrometry (MS) as a detector. The following 19 HMOs were studied in multiple studies and were
210 included in the meta-analysis: fucosylated HMOs [2-fucosyllactose (2'FL), 3-fucosyllactose (3FL),
211 difucosyllactose (DFLac), difucosyllacto-N-hexaose (DFLNH), difucosyllacto-N-tetraose (DFLNT),
212 fucosyllacto-N-hexaose (FLNH), lacto-N-fucopentaose I (LNFP I), lacto-N-fucopentaose II (LNFP II), lacto-
213 N-fucopentaose III (LNFP III)]; sialylated HMOs [3-sialyllactose (3'SL), 6-sialyllactose (6'SL), disialyllacto-
214 N-tetraose (DSLNT), disialyllacto-N-hexaose (DSLNH), sialyllacto-N-tetraose b (LST b), sialyllacto-N-
215 tetraose c (LST c)]; fucosylated and sialylated HMOs [fucodisialyllacto-N-hexaose (FDSLNH)]; and
216 undecorated HMOs [lacto-N-hexaose (LNH), lacto-N-neotetraose (LNnT), lacto-N-tetraose (LNT)]. Given

217 that different authors used different abbreviations in their published articles, we used Lars Bode's (2012)
218 abbreviations for consistency in our manuscript [6].

219 **HMOs involved in brain tissue organization**

220 The authors used a 3.0-Tesla MRI scanner to correlate MRI indices of tissue microstructure and regional
221 cerebral blood flow (rCBF) in infants with HMO concentrations. Most notably in the cortical mantle, 2'FL was
222 connected to decreased fractional anisotropy (FA), increased mean diffusivity (MD), and decreased rCBF
223 values, suggesting that this HMO is crucial for the formation of dendritic arbours and synapses for circuit
224 formation. In the developing white matter, 3FL and 3'SL were linked to higher FA, lower MD, and higher
225 rCBF values, indicating that these HMOs may improve structural connectivity in the brain. While 2'FL, 3FL,
226 and 3'SL were linked to early brain maturation, 6'SL was not associated to these MRI indices [37].

227 **HMOs involved in cognitive development**

228 This section summarizes the involvement of HMOs in cognitive development in six studies using various
229 techniques such as: Ratings of Everyday Executive Functioning (REEF); Behaviour Rating Inventory of
230 Executive Function (BRIEF); Age and Stages Questionnaire (ASQ); Bayler III Cognitive Scale; and Mullen
231 Scales of Early Learning (MSEL). The REEF and BRIEF scores were used to determine executive functions at
232 different time points. 2'FL and total fucosylated HMOs were associated with better executive functions at 3
233 years, and 2'FL was associated with 4-behavioral tasks at 2 and 12 weeks, regardless of whether the infants
234 were exclusively breastfed or partially breastfed; however, 3'SL, 6'SL, and total Sialylated HMOs were
235 associated with worse executive functions at 3 years [44]. The ASQ score was used in 2/6 studies to assess the
236 development of communication skills, fine motor skills, gross motor skills, and personal social skills. Positive
237 associations were determined for: 3FL for communication skills; DSLNT, FLNH for fine motor skills; and
238 negative associations for: 2'FL, DFLac, LNH, and 3'SL for personal social skills, LNnT for problem solving,
239 and LNFP III for gross motor skills [50]. In a study by Roze and colleagues, LNFP III was associated with
240 ASQ score in secretor mothers but not in the entire cohort [48]. The Bayler III cognitive scale, which measures
241 cognitive development at 24 months using five domains: cognitive, language, motor, adaptive, behavior, and
242 social-emotional development, was used in 2/6 studies. 2'FL, LNH, and FLNH were positively associated with
243 cognitive development, while LSTb was negatively associated with cognitive development [34], whereas 2'FL
244 and 6'SL were positively associated with cognitive development in secretors [40]. The MSEL is a tool for
245 assessing infant cognitive development that is divided into five subdomains: fine motor, gross motor, visual
246 reception, receptive language, and expressive language. In A-tetra+ HMO mothers, there was a positive
247 relationship between 3'SL and early learning composite, receptive language t score [45].

248 **HMOs involved in infant growth velocity**

249 Various anthropometrics indexes were used to report infant growth in 19 studies. Weight gain was reported as
250 weight z score or weight for age z score in 10/19 studies. The following studies found positive associations
251 between HMOs and weight gain: 2'FL [30,43,54], 3FL [30,38,43], 3'SL [18,30,38,43], LNnT [35], LNFP II
252 [38], DFLac [30,43,54], LST b [38], LNH [41], DFLNH [43], DSLNH [38], DFLNT [43], and negative
253 associations for 3'SL [31,32], 6'SL [43], LNnT [30,32,54], LNFP II [35], LNH [31], LNFP I [17], LST b [30],
254 LST c [18], DFLNH [54], DSLNT [32,35], FDSLNH [31].

255 The second metric, height gain, was reported in 12/19 studies as either weight for length z score, length for age
256 z score, or height for age z score. The following HMOs had a positive correlation with height gain: 2'FL
257 [30,31,47,48], 3FL [43], 3'SL [39,43], LNnT [39], LST-a [49,51], DFLNH [41,43,51], and DFLNT [43] while
258 a negative correlation was linked with: 3FL [52], 3'SL [46], 6'SL [49], LNnT [30,39,43,46], LNT [31,39],
259 LNFP I [39,47], LNFP II [32], LST b [30,31,49], and FLNH [39].

260 The third infant growth metric was head growth which was reported in 7/19 studies as either head
261 circumference for age z score or head circumference z score. This metric which also serves as an index of
262 cognitive development and was positively correlated with the following HMOs: 2'FL [31], 3'SL [51,54], 6'SL
263 [48], LNFP III [46], LST-a [49], DFLac [54], and negatively correlated with 6'SL [49,51], LNFP III [18],
264 LNFP I [18], DFLNH [54], LST b [49], and DSLNH [31].

265 Body mass index, a gauge of body composition, was reported as body mass index for age z score in 7/19
266 studies. The following were reported to have positive associations with this metric: DFLac [43], LST b [43],
267 and DFLNT [43], while a negative association was reported for 2'FL [39], 6'SL [54], LNnT [30], and LNnT
268 [39]. The percentage of fat mass change was independently reported in 4/19 studies and is closely related to
269 body mass index and weight gain. Positive correlations for were noted for: 2'FL [43], 3'SL [38], 6'SL [38],
270 LNFP III [38], LNFP II [17,38], DSLNT [17,38], LST b [38], FDSLNH [17], DSLNH [38], DFLNT [43],
271 while negative association was reported for: 6'SL [43], LNnT [17,54], LNFP I [17], LNFP III [43], and
272 DFLNH [54]. In 4/19 studies, the change in fat-free (lean) mass was reported, and it was positively related to
273 3FL [43], 3'SL [43,48], DFLac [43], DFLNH [43] and DFLNT [43], whereas a negative correlation was found
274 for: LNT [48], LNFP I [17], LST c [48] [49]. Skinfold thickness z-score, a novel metric, was positively
275 correlated with 3FL and 3'SL and negatively correlated with 6'SL, LNnT, and LST c [31].

276 **HMOs predominant in stunting or severe acute malnutrition**

277 Two studies focused on the effects of undernutrition on HMO composition and consequently on stunting [47],
278 and severe acute malnutrition (SAM) [53], in Malawi and Bangladeshi children respectively. In these studies,
279 ultrasensitive qTOF-MS was used to conduct robust HMO profiling, yielding 50 and 73 HMOs, respectively.
280 Lower levels of fucosylated and sialylated HMO were linked to stunting in Malawian infants [47]. In contrast,

281 total sialylated HMOs were linked to a higher risk of SAM in Bangladeshi children, whilst there was no
282 evidence of a significant association between SAM and fucosylated or undecorated HMOs [53].

283 DISCUSSION

284 Our study provides a comprehensive analysis of 19 HMOs on early childhood milestones based on published
285 studies in order to better understand their roles, which have remained understudied when compared to other
286 human milk components. We collected and pooled data that suggests that 2'FL, 3FL, and 3'SL were associated
287 with early brain maturation, which is important in understanding the optimal growth and cognitive
288 development benefits observed in breastfed infants and superior outcomes on infants nursed by secretor
289 mothers [37,55]. Suboptimal breastfeeding or poor maternal nutrition resulted in lower total fucosylated and
290 sialylated HMOs, resulting in stunting. Overnutrition has been linked to excessive weight gain in children in
291 some studies when breastfeeding children are also supplemented with formulas containing 2'FL. Interestingly,
292 LNFP II was found to be protective against pediatric obesity, and early supplementation with this HMO may
293 help to prevent childhood obesity, which can persist into adolescence and adulthood. The pooled studies were
294 highly heterogeneous, with secretors having higher HMO concentrations despite the fact that the difference
295 was not statistically significant. Nevertheless, key HMOs involved in early childhood development, such as
296 2'FL and 3'SL, were predominant in secretors explaining the benefits to their nursing infants.

297 Among the 224 identified HMOs [56], this review focused on 19 well-profiled HMOs and their effects on
298 brain development, infant growth velocity, and neurodevelopment. As expected, there was evidence of
299 between-study heterogeneity, which ranged from low to substantial in accordance with Higgins and
300 Thompson's I^2 statistic [57]. In this study, the pooled concentrations of 2'FL, DFlac, DFLNT, LNFP I, LST c,
301 LNnT, FDSLNH, LNFP II, LNFP III, LST b, and LNT were statistically different between secretors and non-
302 secretors, consistent with previous studies that found HMO concentrations varied by maternal secretor status
303 [58–61]. The selected studies also confirmed the previously reported observation that secretor status varies by
304 geographical location, with the highest proportions of secretor mothers in South America and Northern Europe
305 and the lowest proportions in Africa and Asia [62–67]. The expression of the FUT2 gene, whose locus is
306 mapped to chromosome 19, is now known to be the primary driver of this genetic variation[11]. A
307 compensatory mechanism occurs via expression of FUT3 gene (Lewis positive) where mothers produce milk
308 containing oligosaccharides with α 1-3 and α 1-4 linked fucoses including 3FL, and LNFP II [2,13]. This
309 finding confirms that evolutionary dynamics ensured that non-secretors retained the ability to produce key
310 fucosylated HMOs required for early childhood development though not as efficiently as secretors.
311 Seasonality was identified as a key environmental factor regulating HMO synthesis in Gambian mothers [18],
312 and similar patterns were observed in Israeli mothers, with HMO concentrations significantly lower in the
313 summer [66]. Given that seasons are a common phenomenon all over the world, this is a critical factor that
314 should be considered in study designs. Though not frequently reported as a probable causal factor of interest,
315 infants' biological sex influenced HMO in Brazilian mothers [36], which is consistent with the findings of
316 Asher and colleagues in a study in which seasonality was adjusted for [66]. The milk collection technique,

317 which was dependent on geographical location, could also have contributed to the observed differences.
318 Moossavi and colleagues discovered that using breast pumps was associated with lower relative abundance of
319 *Bifidobacterium spp.* and higher levels of DSLNH, emphasising the indirect role of the microbiome, which
320 will be discussed in detail under infant growth [68]. Maternal weight and BMI adjusted for in 13 studies may
321 have also played a role in HMO concentrations, consistent with previous findings [64,69].

322 Breastfeeding that starts as soon as the baby is born and continues exclusively for 6 months and extended
323 breastfeeding for up to 2 years have been linked to higher cognitive functions in children studied using REEF,
324 BRIEF, ASQ and MSEL tools since the early ages[24,70]. This has been attributed to sialic acid which is
325 abundant in sialylated HMOs and its role in brain development, neuronal transmission, and synaptogenesis
326 which is well established [71,72]. This link was clarified by Berger and colleagues' groundbreaking study [37],
327 which demonstrated the link between key fucosylated and sialylated HMOs on brain maturation, explaining
328 why breastfed infants of secretor mothers benefit from more health benefits than those of non-secretor
329 mothers. It also suggests that in the absence of 2'FL supplementation, infants of non-secretor mothers who
330 express no 2'FL and less 3'SL benefit less, or that compensation occurs through unknown mechanisms. With
331 the link between HMOs and brain development and thus higher cognitive functions established, we now have
332 a solid foundation to advocate for the importance of exclusive breastfeeding after birth to reap the greatest
333 benefits, as the benefits identified at one month diminish after 6 months indicating that early exposure is
334 temporal and the most critical time which has an influence on infant cognitive development [34]. This
335 knowledge may also benefit preterm infants born when their mothers' entero-mammary pathway is not fully
336 developed [73], by exposing them to mature donor milk from confirmed secretor mothers which is loaded with
337 sufficient 2'FL and microbiome for optimal development. In a study of preterm infants, LNFP III was
338 significantly associated with higher cognitive development in infants born to Secretor(+) Lewis(+) mothers
339 [48], indicating that it could play a significant role in this vulnerable population but only in secretor mothers'
340 infants. The microbiota is also involved in cognitive development via the gut-brain axis. For instance, the
341 relative abundances of *Veillonella spp.*, a critical microbiota regulating γ -aminobutyric acid (GABA), a critical
342 neurotransmitter for early brain development [74], were inversely correlated with concentrations of sialylated
343 HMOs [63]. Some HMOs, including LNT and DSLNT, were linked to poor cognitive development and were
344 notably higher in non-secretor mothers in our pooled analyses [34,50].

345 While the link between cognitive development and sialylated HMOs is well established [37], the connection
346 between HMOs and growth velocity is blurred and indirect given that growth functions are largely influenced
347 by lactose lipids, lactose, and proteins [75,76]. The relatively low protein and lipid concentrations in human
348 milk, but higher HMO concentrations, are an adaptation to the lower needs of infant growth but optimal
349 development of higher order cognitive functions at a younger age than non-human mammals who gain weight
350 at a much faster rate [56,77]. Nonetheless, the importance of HMOs in physical growth can be seen in the

351 context of malnutrition, where breastmilk from mothers with stunted children contained lower levels of total
352 HMOs than breastmilk from mothers with healthy infants, with adverse effects for infants of non-secretor
353 mothers who are unable to compensate for deficiencies in fucosylated HMOs through increased output of
354 other (e.g., sialylated) HMOs, resulting in milk that does not support infant growth [47]. Addressing
355 undernutrition is a global issue because, as of 2020, 144 million children under the age of five were stunted,
356 which disadvantages them mainly because they have difficulty learning in school, earn less as adults, and face
357 barriers to participation in their communities [78]. 2'FL, a critical HMO in brain development and cognitive
358 ability, was linked to weight gain, height gain, head circumference, and body composition, which highlights
359 the significance of this HMO, which we posit confers physical growth in a secretor-specific manner alongside
360 other milk components [30,31,43,47,48,54]. The second HMO of interest, 3'SL, had contradictory findings on
361 weight gain, with positive associations in studies conducted by [18,30,38,43], and negative associations in
362 studies conducted by [31,32]. 3'SL was additionally linked to height gain, head growth, and body composition
363 [31,38,39,43,48,51,54]. The reason for this inconsistency in weight gain could be due to microbiota or
364 macronutrients such as lipids and proteins found in milk having a direct relationship with growth. This can be
365 further understood in the context of high-income overnutrition, which manifests as pediatric obesity, notably
366 when breastfeeding is supplemented with formula containing 2'FL in mixed feeding settings occasioning over
367 dosage on a critical HMO [35,39,54].

368 In our pooled analyses, LNFP II, a fucosylated HMO that was predominant in non-secretor mothers, was
369 protective against excessive weight gain regardless of maternal secretor status, implying that early exposure to
370 LNFP-II could offset early obesity risk, which is important to policymakers as a mitigation strategy in
371 communities with paediatric obesity challenges [35]. With the microbiome featuring as an important indirect
372 regulator of infant growth, we explore its role in this early critical event, fully aware of the consequences of
373 dysbiosis induced by antibiotics [74]. Breastfed infants appear to have better outcomes because breast milk
374 provides both HMOs and commensal bacteria (microbiota) in early life, with the former acting as prebiotics
375 that are metabolized by the latter and thus playing a critical role in immune maturation and the latter
376 enhancing infant health by preventing pathogen adhesion and promoting gut colonization by beneficial
377 microbes [6,79]. Because milk oligosaccharides are structurally similar to intestinal mucin O-glycans,
378 bacterial glycosidases digest carbohydrates from the intestine's protective mucin layer, allowing pathobionts
379 such as Enterobacteriaceae to cross-feed [80]. Any factor that can lead to microbiota dysbiosis early in life —
380 such as inadequate breastfeeding, prolonged diarrhea, or antibiotics which eliminates crucial taxa for
381 preserving homeostasis, leaving vacancies to be filled by blooms of pathobionts that may be more effective at
382 extracting energy, predisposing some infants to obesity later in life [74,81]. Furthermore, HMOs function as
383 receptor decoys, preventing bacterial adhesion to mucosal surfaces and thus preventing diarrhea [13]. They
384 also reduce the pH of the infant's digestive tract, increasing the proportion of beneficial bacteria *B. longum*

385 while decreasing *E. coli* and *C. perfringens* [82]. In this context, we argue that children who are less sick will
386 grow faster.

387 **Strengths and limitations**

388 The strength of this study was its ability to summarize and quantify evidence for the role of HMOs on three
389 interconnected early growth metrics, namely brain development, physical growth, and cognitive development,
390 using clearly defined research question. We were cognizant of the fact evidence synthesis requires adequate
391 representation for validity of the findings. We also included a wide spectrum of systematically selected studies
392 from high and low income countries which helps to understand the influence of HMOs in regions of the world
393 with highest undernutrition burden and associated highest neonatal and infant mortality rates globally which is
394 critical for decision-making.

395 The main limitation of the studies was inconsistent reporting of HMO concentration; some authors used mean
396 and standard deviation while others used median and IQR, which had to be converted, potentially losing some
397 accuracy. Second, the random-effects model we used to calculate the pooled effect reports four heterogeneity
398 statistics by default, which makes deciding what to interpret and what to leave out challenging. In this case, we
399 reported both the τ^2 statistic, which is insensitive to changes in the number of studies and their precision but is
400 often difficult to interpret, and the I^2 statistic, which is insensitive to changes in the number of studies and
401 heavily depends on the precision of the included studies but is easier to interpret the percentage. Finally, we
402 had only 12 comparing HMO concentrations between secretors and non-secretors.

403 **Conclusion and future opportunities**

404 This study revealed that early-life exposure to 2'FL and 3'SL, which are abundant in secretor mothers, confer
405 early childhood growth advantage to breastfeeding infants via optimal brain development and thus cognitive
406 development. The proportion of secretor mothers in our study was 78%, implying that 22% of infants on non-
407 secretors have no access to 2'FL and only have sub-optimal access to critical 3'SL via breastfeeding, both of
408 which play critical roles in early childhood growth and development. Key emerging issues warrant a further
409 investigation in future studies. There is a need for well-designed, sufficiently powered studies that distinguish
410 between secretor and non-secretor women. Since suboptimal breastfeeding or poor maternal nutrition is
411 linked poor developmental outcomes, it is important that these infants are supplemented with key HMOs that
412 are linked with optimal growth. Unlike in the past, when this seemed impossible, it is now possible due to
413 technological advances that have enabled large-scale production of key HMOs such as 2'FL, which is
414 registered as a safe ingredient in infant formula in Europe and the USA. On the other hand, there is a risk of
415 pediatric obesity, which may persist into adulthood. The finding that LNFP II is protective against pediatric
416 obesity is of great interest, and more research is needed to confirm the findings. If successful, supplementation
417 with this HMO holds the promise of new therapeutic applications to address obesity, a global concern. If

418 successful, this HMO supplementation holds the promise of new therapeutic applications to address obesity,
419 which is a global concern.

420

421 **Conflict of Interest**

422 The authors have declared that no competing interests exist.

423

424 **Author Contributions**

425 Conceptualization: MM, RN and DW

426 Methodology: MM and HK

427 Investigation: MM, HK, LO and HA

428 Statistical analysis: MM and HA

429 Writing – original draft: MM and HA

430 Writing – review & editing: MM, RN and DW

431

432 **Funding**

433 The authors received no specific funding for this work.

434

435 **Data Availability Statement**

436 All the data included was extracted from the selected original articles. The code used for the meta-analysis can
437 be requested from the corresponding author.

438

439

440 REFERENCES

- 441 1. Hegar B, Wibowo Y, Basrowi RW, Ranuh RG, Sudarmo SM, Munasir Z, et al. The role of two human
442 milk oligosaccharides, 2'-fucosyllactose and lacto-N-neotetraose, in infant nutrition. *Pediatr*
443 *Gastroenterol Hepatol Nutr.* 2019;22: 330–340. doi:10.5223/pghn.2019.22.4.330
- 444 2. Thurl S, Munzert M, Henker J, Boehm G, Mller-Werner B, Jelinek J, et al. Variation of human milk
445 oligosaccharides in relation to milk groups and lactational periods. *Br J Nutr.* 2010;104: 1261–1271.
446 doi:10.1017/S0007114510002072
- 447 3. Anderson JW, Johnstone BM, Remley DT. Breast feeding and cognitive development: a meta-analysis.
448 *Am J Clin Nutr.* 1999;70: 525–35.
- 449 4. Hennet T, Borsig L. Breastfed at Tiffany's. *Trends Biochem Sci.* 2016;41: 508–518.
450 doi:10.1016/j.tibs.2016.02.008
- 451 5. Kirmiz N, Robinson RC, Shah IM, Barile D, Mills DA. Milk Glycans and Their Interaction with the
452 Infant-Gut Microbiota. *Annu Rev Food Sci Technol.* 2018;9: 429–450. doi:10.1146/annurev-food-
453 030216-030207
- 454 6. Bode L. Human milk oligosaccharides: Every baby needs a sugar mama. *Glycobiology.* 2012;22:
455 1147–1162. doi:10.1093/glycob/cws074
- 456 7. Chen X. Human Milk Oligosaccharides (HMOs): Structure, Function, and Enzyme-Catalyzed
457 Synthesis. 1st ed. *Advances in Carbohydrate Chemistry and Biochemistry.* Elsevier Inc.; 2015.
458 doi:10.1016/bs.accb.2015.08.002
- 459 8. Kunz C, Rudloff S, Baier W, Klein N, Strobel S. Oligosaccharides in human milk: Structural,
460 functional, and metabolic aspects. *Annu Rev Nutr.* 2000;20: 699–722.
461 doi:10.1146/annurev.nutr.20.1.699
- 462 9. Kunz C, Rudloff S, Hintelmann A, Pohlentz G, Egge H. High-pH anion-exchange chromatography
463 with pulsed amperometric detection and molar response factors of human milk oligosaccharides. *J*
464 *Chromatogr B Biomed Appl.* 1996;685: 211–221. doi:10.1016/S0378-4347(96)00181-8
- 465 10. Dinleyici M, Barbieur J, Dinleyici EC, Vandenplas Y. Functional effects of human milk
466 oligosaccharides (HMOs). *Gut Microbes.* 2023;15. doi:10.1080/19490976.2023.2186115
- 467 11. Williams JE, McGuire MK, Meehan CL, McGuire MA, Brooker SL, Kamau-Mbuthia EW, et al. Key
468 genetic variants associated with variation of milk oligosaccharides from diverse human populations.
469 *Genomics.* 2021;113: 1867–1875. doi:10.1016/j.ygeno.2021.04.004
- 470 12. Totten SM, Zivkovic AM, Wu S, Ngyuen U, Freeman SL, Ruhaak LR, et al. Comprehensive profiles of
471 human milk oligosaccharides yield highly sensitive and specific markers for determining secretor status
472 in lactating mothers. *J Proteome Res.* 2012;11: 6124–6133. doi:10.1021/pr300769g
- 473 13. Bode L. The functional biology of human milk oligosaccharides. *Early Hum Dev.* 2015;91: 619–622.
474 doi:10.1016/j.earlhumdev.2015.09.001
- 475 14. Hamosh M. Bioactive factors human milk. *Pediatr Clin North Am.* 2001;48: 68–86.
476 doi:10.1016/s0031-3955(05)70286-8
- 477 15. Newburg DS. Neonatal protection by an innate immune system of human milk consisting of
478 oligosaccharides and glycans. *J Anim Sci.* 2009;87: 26–34. doi:10.2527/jas.2008-1347

- 479 16. Triantis V, Bode L, van Neerven JRJ. Immunological effects of human milk oligosaccharides. *Front*
480 *Pediatr.* 2018;6. doi:10.3389/fped.2018.00190
- 481 17. Alderete TL, Autran C, Brekke BE, Knight R, Bode L, Goran MI, et al. Associations between human
482 milk oligosaccharides and infant body composition in the first 6 mo of life. *Am J Clin Nutr.* 2015;102:
483 1381–1388. doi:10.3945/ajcn.115.115451
- 484 18. Davis JCC, Lewis ZT, Krishnan S, Bernstein RM, Moore SE, Prentice AM, et al. Growth and
485 Morbidity of Gambian Infants are Influenced by Maternal Milk Oligosaccharides and Infant Gut
486 Microbiota. *Sci Rep.* 2017;7. doi:10.1038/srep40466
- 487 19. Yu ZT, Chen C, Newburg DS. Utilization of major fucosylated and sialylated human milk
488 oligosaccharides by isolated human gut microbes. *Glycobiology.* 2013;23: 1281–1292.
489 doi:10.1093/glycob/cwt065
- 490 20. Tarr AJ, Galley JD, Fisher SE, Chichlowski M, Berg BM, Bailey MT. The prebiotics 3'Sialyllactose
491 and 6'Sialyllactose diminish stressor-induced anxiety-like behavior and colonic microbiota alterations:
492 Evidence for effects on the gut-brain axis. *Brain Behav Immun.* 2015;50: 166–177.
493 doi:10.1016/j.bbi.2015.06.025
- 494 21. Jacobi SK, Yatsunenko T, Li D, Dasgupta S, Yu RK, Berg BM, et al. Dietary isomers of sialyllactose
495 increase ganglioside sialic acid concentrations in the corpus callosum and cerebellum and modulate the
496 colonic microbiota of formula-fed piglets. *J Nutr.* 2016;146: 200–208. doi:10.3945/jn.115.220152
- 497 22. Gale C, Logan KM, Santhakumaran S, Parkinson JRC, Hyde MJ, Modi N. Effect of breastfeeding
498 compared with formula feeding on infant body composition: A systematic review and meta-analysis.
499 *Am J Clin Nutr.* 2012;95: 656–669. doi:10.3945/ajcn.111.027284
- 500 23. Norrish I, Sindi A, Sakalidis VS, Lai CT, McEachran JL, Tint MT, et al. Relationships between the
501 Intakes of Human Milk Components and Body Composition of Breastfed Infants: A Systematic
502 Review. *Nutrients.* 2023. doi:10.3390/nu15102370
- 503 24. Hou L, Li X, Yan P, Li Y, Wu Y, Yang Q, et al. Impact of the Duration of Breastfeeding on the
504 Intelligence of Children: A Systematic Review with Network Meta-Analysis. *Breastfeed Med.*
505 2021;16: 687–696. doi:10.1089/bfm.2020.0364
- 506 25. Lechner BE, Vohr BR. Neurodevelopmental Outcomes of Preterm Infants Fed Human Milk: A
507 Systematic Review. *Clin Perinatol.* 2017;44: 69–83. doi:10.1016/j.clp.2016.11.004
- 508 26. Lockyer F, McCann S, Moore SE. Breast milk micronutrients and infant neurodevelopmental
509 outcomes: A systematic review. *Nutrients.* 2021;13: 1–16. doi:10.3390/nu13113848
- 510 27. Page MJ, McKenzie JE, Bossuyt PM, Boutron I, Hoffmann TC, Mulrow CD, et al. The PRISMA 2020
511 statement: An updated guideline for reporting systematic reviews. *BMJ.* 2021;372.
512 doi:10.1136/bmj.n71
- 513 28. Ouzzani M, Hammady H, Fedorowicz Z, Elmagarmid A. Rayyan-a web and mobile app for systematic
514 reviews. *Syst Rev.* 2016;5: 1–10. doi:10.1186/s13643-016-0384-4
- 515 29. Wells G, Shea B, O'Connell D, Peterson J, Welch V, Losos M, et al. The Newcastle-Ottawa Scale
516 (NOS) for assessing the quality of nonrandomised studies in meta-analyses. 2017 [cited 29 Sep 2022].
517 Available: https://www.ohri.ca/programs/clinical_epidemiology/oxford.asp
- 518 30. Lagström H, Rautava S, Ollila H, Kaljonen A, Turta O, Mäkelä J, et al. Associations between human

- 519 milk oligosaccharides and growth in infancy and early childhood. *Am J Clin Nutr.* 2020;111: 769–778.
520 doi:10.1093/ajcn/nqaa010
- 521 31. Mansell T, Furst A, O’Hely M, Chang M, Ponsonby A-L, Vuillermin P, et al. Age-dependent
522 associations of human milk oligosaccharides with body size and composition up to 4 years of age. *Am*
523 *J Clin Nutr.* 2023;117: 930–945. doi:10.1016/j.ajcnut.2023.02.016
- 524 32. Dou Y, Luo Y, Xing Y, Liu H, Chen B, Zhu L, et al. Human Milk Oligosaccharides Variation in
525 Gestational Diabetes Mellitus Mothers. *Nutrients.* 2023;15: 1441. doi:10.3390/nu15061441
- 526 33. Sprenger N, Lee LY, De Castro CA, Steenhout P, Thakkar SK. Longitudinal change of selected human
527 milk oligosaccharides and association to infants’ growth, an observatory, single center, longitudinal
528 cohort study. *PLoS One.* 2017;12: 1–15. doi:10.1371/journal.pone.0171814
- 529 34. Berger PK, Plows JF, Jones RB, Alderete TL, Yonemitsu C, Poulsen M, et al. Human milk
530 oligosaccharide 2’-fucosyllactose links feedings at 1 month to cognitive development at 24 months in
531 infants of normal and overweight mothers. *PLoS One.* 2020;15: 1–12.
532 doi:10.1371/journal.pone.0228323
- 533 35. Berger PK, Plows JF, Jones RB, Alderete TL, Yonemitsu C, Ryoo JH, et al. Human milk
534 oligosaccharides and Hispanic infant weight gain in the first 6 months. *Obesity.* 2020;28: 1519–1525.
535 doi:10.1002/oby.22884
- 536 36. Tonon KM, de Moraes MB, Abrão ACFV, Miranda A, Moraes TB. Maternal and Infant Factors
537 Associated with Human Milk Oligosaccharides Concentrations According to Secretor and Lewis
538 Phenotypes. *Nutrients.* 2019;11: 1–23. doi:10.3390/nu11061358
- 539 37. Berger PK, Bansal R, Sawardekar S, Yonemitsu C, Furst A, Hampson HE, et al. Associations of
540 Human Milk Oligosaccharides with Infant Brain Tissue Organization and Regional Blood Flow at 1
541 Month of Age. *Nutrients.* 2022;14: 1–14. doi:10.3390/nu14183820
- 542 38. Saben JL, Sims CR, Abraham A, Bode L, Andres A. Human milk oligosaccharide concentrations and
543 infant intakes are associated with maternal overweight and obesity and predict infant growth. *Nutrients.*
544 2021;13: 1–16. doi:10.3390/nu13020446
- 545 39. Menzel P, Vogel M, Austin S, Sprenger N, Grafe N, Hilbert C, et al. Concentrations of
546 oligosaccharides in human milk and child growth. *BMC Pediatr.* 2021;21: 1–11. doi:10.1186/s12887-
547 021-02953-0
- 548 40. Oliveros E, Martín MJ, Torres-Espínola FJ, Segura-Moreno T, Ramírez M, Santos A, et al. Human
549 milk levels of 2’-fucosyllactose and 6’-sialyllactose are positively associated with infant
550 neurodevelopment and are not impacted by maternal BMI or diabetic status. *J Nutr Food Sci.* 2021;4:
551 100024.
- 552 41. Wang M, Zhao Z, Zhao A, Zhang J, Wu W, Ren Z, et al. Neutral Human Milk Oligosaccharides Are
553 Associated with Multiple Fixed and Modifiable Maternal and Infant Characteristics. *Nutrients.*
554 2020;12: 10.3390. doi:https://doi.org/10.3390/nu12030826
- 555 42. Paganini D, Uyoga MA, Kortman GAM, Boekhorst J, Schneeberger S, Karanja S, et al. Maternal
556 human milk oligosaccharide profile modulates the impact of an intervention with iron and galacto-
557 oligosaccharides in Kenyan infants. *Nutrients.* 2019;11. doi:10.3390/nu11112596
- 558 43. Cheema AS, Gridneva Z, Furst AJ, Roman AS, Trevenen ML, Turlach BA, et al. Human Milk
559 Oligosaccharides and Bacterial Profile Modulate Infant Body Composition during Exclusive

- 560 Breastfeeding. *Int J Mol Sci.* 2022;23: 1–28. doi:10.3390/ijms23052865
- 561 44. Willemsen Y, Beijers R, Gu F, Vasquez AA, Schols HA, de Weerth C. Fucosylated Human Milk
562 Oligosaccharides during the First 12 Postnatal Weeks Are Associated with Better Executive Functions
563 in Toddlers. *Nutrients.* 2023;15. doi:10.3390/nu15061463
- 564 45. Cho S, Zhu Z, Li T, Baluyot K, Howell BR, Hazlett HC, et al. Human milk 3'-Sialyllactose is
565 positively associated with language development during infancy. *Am J Clin Nutr.* 2021;114: 588–597.
566 doi:10.1093/ajcn/nqab103
- 567 46. Binia A, Lavallo L, Chen C, Austin S, Agosti M, Al-Jashi I, et al. Human milk oligosaccharides, infant
568 growth, and adiposity over the first 4 months of lactation. *Pediatr Res.* 2021;90: 684–693.
569 doi:10.1038/s41390-020-01328-y
- 570 47. Charbonneau MR, O'Donnell D, Blanton L V., Totten SM, Davis JCC, Barratt MJ, et al. Sialylated
571 Milk Oligosaccharides Promote Microbiota-Dependent Growth in Models of Infant Undernutrition.
572 *Cell.* 2016;164: 859–871. doi:10.1016/j.cell.2016.01.024
- 573 48. Rozé JC, Hartweg M, Simon L, Billard H, Chen Y, Austin S, et al. Human milk oligosaccharides in
574 breast milk and 2-year outcome in preterm infants: An exploratory analysis. *Clin Nutr.* 2022;41: 1896–
575 1905. doi:10.1016/j.clnu.2022.07.024
- 576 49. Wejryd E, Martí M, Marchini G, Werme A, Jonsson B, Landberg E, et al. Low diversity of human milk
577 oligosaccharides is associated with necrotising enterocolitis in extremely low birth weight infants.
578 *Nutrients.* 2018;10. doi:10.3390/nu10101556
- 579 50. Ferreira ALL, Alves-Santos NH, Freitas-Costa NC, Santos PPT, Batalha MA, Figueiredo ACC, et al.
580 Associations between Human Milk Oligosaccharides at 1 Month and Infant Development throughout
581 the First Year of Life in a Brazilian Cohort. *J Nutr.* 2021;151: 3543–3554. doi:10.1093/jn/nxab271
- 582 51. Jorgensen JM, Young R, Ashorn P, Ashorn U, Chaima D, Davis JCC, et al. Associations of human
583 milk oligosaccharides and bioactive proteins with infant growth and development among Malawian
584 mother-infant dyads. *Am J Clin Nutr.* 2021;113: 209–220. doi:10.1093/ajcn/nqaa272
- 585 52. Samuel TM, Hartweg M, Lebumfacil JD, Buluran KB, Lawenko RB, Estorninos EM, et al. Dynamics
586 of human milk oligosaccharides in early lactation and relation with growth and appetitive traits of
587 Filipino breastfed infants. *Sci Rep.* 2022;12: 1–13. doi:10.1038/s41598-022-22244-7
- 588 53. Nuzhat S, Palit P, Mahfuz M, Islam MR, Hasan SMT, Islam MM, et al. Association of human milk
589 oligosaccharides and nutritional status of young infants among Bangladeshi mother–infant dyads. *Sci*
590 *Rep.* 2022;12: 1–9. doi:10.1038/s41598-022-13296-w
- 591 54. Larsson MW, Lind M V., Laursen RP, Yonemitsu C, Larnkjær A, Mølgaard C, et al. Human Milk
592 Oligosaccharide Composition Is Associated With Excessive Weight Gain During Exclusive
593 Breastfeeding—An Explorative Study. *Front Pediatr.* 2019;7: 1–14. doi:10.3389/fped.2019.00297
- 594 55. Robertson RC, Manges AR, Finlay BB, Prendergast AJ. The Human Microbiome and Child Growth –
595 First 1000 Days and Beyond. *Trends Microbiol.* 2019;27: 131–147. doi:10.1016/j.tim.2018.09.008
- 596 56. Durham SD, Wei Z, Lemay DG, Lange MC, Barile D. Creation of a milk oligosaccharide database,
597 MilkOligoDB, reveals common structural motifs and extensive diversity across mammals. *Sci Rep.*
598 2023;13: 1–26. doi:10.1038/s41598-023-36866-y
- 599 57. Higgins JPT, Thompson SG. Quantifying heterogeneity in a meta-analysis. *Stat Med.* 2002;21: 1539–

- 600 1558. doi:10.1002/sim.1186
- 601 58. Kunz C, Rudloff S. Compositional Analysis and Metabolism of Human Milk Oligosaccharides in
602 Infants. *Nestle Nutr Inst Workshop Ser.* 2017;88: 137–147. doi:10.1159/000455398
- 603 59. Newburg DS. Human milk oligosaccharides vary among populations. *Am J Clin Nutr.* 2017;105:
604 1027–1028. doi:10.3945/ajcn.117.155721
- 605 60. Thurl S, Munzert M, Boehm G, Matthews C, Stahl B. Systematic review of the concentrations of
606 oligosaccharides in human milk. *Nutr Rev.* 2017;75: 920–933. doi:10.1093/nutrit/nux044
- 607 61. Saben JL, Abraham A, Bode L, Sims CR, Andres A. Third-trimester glucose homeostasis in healthy
608 women is differentially associated with human milk oligosaccharide composition at 2 months
609 postpartum by secretor phenotype. *Nutrients.* 2020;12: 1–15. doi:10.3390/nu12082209
- 610 62. Samuel TM, Binia A, de Castro CA, Thakkar SK, Billeaud C, Agosti M, et al. Impact of maternal
611 characteristics on human milk oligosaccharide composition over the first 4 months of lactation in a
612 cohort of healthy European mothers. *Sci Rep.* 2019;9: 1–10. doi:10.1038/s41598-019-48337-4
- 613 63. Pace RM, Williams JE, Robertson B, Lackey KA, Meehan CL, Price WJ, et al. Variation in human
614 milk composition is related to differences in milk and infant fecal microbial communities.
615 *Microorganisms.* 2021;9: 1–17. doi:10.3390/microorganisms9061153
- 616 64. McGuire MK, Meehan CL, McGuire MA, Williams JE, Foster J, Sellen DW, et al. What’s normal?
617 Oligosaccharide concentrations and profiles in milk produced by healthy women vary geographically.
618 *Am J Clin Nutr.* 2017;105: 1086–1100. doi:10.3945/ajcn.116.139980.Am
- 619 65. Vinjamuri A, Davis JCCC, Totten SM, Wu LD, Klein LD, Martin M, et al. Human Milk
620 Oligosaccharide Compositions Illustrate Global Variations in Early Nutrition. *J Nutr.* 2022;152: 1239–
621 1253. doi:10.1093/jn/nxac027
- 622 66. Asher AT, Mangel L, Ari J Ben, Gover O, Ahmad WA, Herzlich J, et al. Human Milk Oligosaccharide
623 Profile across Lactation Stages in Israeli Women—A Prospective Observational Study. *Nutrients.*
624 2023;15: 1–16. doi:10.3390/nu15112548
- 625 67. Pell LG, Ohuma EO, Yonemitsu C, Loutet MG, Ahmed T, Mahmud A Al, et al. The Human-Milk
626 Oligosaccharide Profile of Lactating Women in Dhaka, Bangladesh. *Curr Dev Nutr.* 2022;5: nzab137.
627 doi:10.1201/9780429293016
- 628 68. Moossavi S, Atakora F, Miliku K, Sepehri S, Robertson B, Duan QL, et al. Integrated analysis of
629 human milk microbiota with oligosaccharides and fatty acids in the child cohort. *Front Nutr.* 2019;6: 1–
630 16. doi:10.3389/fnut.2019.00058
- 631 69. Lemay-Nedjelski L, Yonemitsu C, Asbury MR, Butcher J, Ley SH, Hanley AJ, et al. Oligosaccharides
632 and Microbiota in Human Milk Are Interrelated at 3 Months Postpartum in a Cohort of Women with a
633 High Prevalence of Gestational Impaired Glucose Tolerance. *J Nutr.* 2021;151: 3431–3441.
634 doi:10.1093/jn/nxab270
- 635 70. Dangat K, Joshi S. Breast milk and cognitive performance in children. *Diet and Nutrition in
636 Neurological Disorders.* Elsevier Inc.; 2023. doi:10.1016/b978-0-323-89834-8.00014-3
- 637 71. Hauser J, Pisa E, Arias Vásquez A, Tomasi F, Traversa A, Chiodi V, et al. Sialylated human milk
638 oligosaccharides program cognitive development through a non-genomic transmission mode. *Mol
639 Psychiatry.* 2021;26: 2854–2871. doi:10.1038/s41380-021-01054-9

- 640 72. Wang B. Sialic acid is an essential nutrient for brain development and cognition. *Annu Rev Nutr.* 2009;29: 177–222. doi:10.1146/annurev.nutr.28.061807.155515
641
- 642 73. Khodayar-Pardo P, Mira-Pascual L, Collado MC, Martínez-Costa C. Impact of lactation stage,
643 gestational age and mode of delivery on breast milk microbiota. *J Perinatol.* 2014;34: 599–605.
644 doi:10.1038/jp.2014.47
- 645 74. Mulinge MM, Mwanza SS, Kabahweza HM, Wamalwa DC, Nduati RW. The impact of neonatal
646 intensive care unit antibiotics on gut bacterial microbiota of preterm infants: a systematic review.
647 *Front Microbiomes.* 2023;2: 1180565. doi:10.3389/frmbi.2023.1180565
- 648 75. Ballard O, Morrow AL. Human Milk Composition. Nutrients and Bioactive Factors. *Pediatr Clin North*
649 *Am.* 2013;60: 49–74. doi:10.1016/j.pcl.2012.10.002
- 650 76. Dror DK, Allen LH. Overview of nutrients in humanmilk. *Adv Nutr.* 2018;9: 278S-294S.
651 doi:10.1093/advances/nmy022
- 652 77. Capuco A V., Akers RM. The origin and evolution of lactation. *J Biol.* 2009;8: 8–11.
653 doi:10.1186/jbiol139
- 654 78. UNICEF / W H O / World Bank. Levels and trends in child malnutrition. UNICEF Rep. 2020.
655 Available: <https://data.unicef.org/resources/jme-report-2020/>
- 656 79. Lyons KE, Ryan CA, Dempsey EM, Ross RP, Stanton C. Breast milk, a source of beneficial microbes
657 and associated benefits for infant health. *Nutrients.* 2020;12. doi:10.3390/nu12041039
- 658 80. Ng KM, Ferreyra JA, Higginbottom SK, Lynch JB, Kashyap PC, Gopinath S, et al. Microbiota-
659 liberated host sugars facilitate post-antibiotic expansion of enteric pathogens. *Nature.* 2013;502: 96–99.
660 doi:10.1038/nature12503
- 661 81. Rautava S. Early-life antibiotic exposure, the gut microbiome, and disease in later life. *The Human*
662 *Microbiome in Early Life.* INC; 2021. doi:10.1016/b978-0-12-818097-6.00006-7
- 663 82. Yu ZT, Chen C, Kling DE, Liu B, McCoy JM, Merighi M, et al. The principal fucosylated
664 oligosaccharides of human milk exhibit prebiotic properties on cultured infant microbiota.
665 *Glycobiology.* 2013;23: 169–177. doi:10.1093/glycob/cws138

666

667

668 **Figure legends**

669 **Figure 1. PRISMA Diagram of Study Selection.** The relevant number of articles at each step are indicated.

670

671 **Figure 2. Forest plot of the standardised mean difference (g) of HMO concentration between secretors**

672 **and non-secretors.** A positive effect (g) indicates a higher concentration in secretors while a negative effect (-

673 g) indicates higher HMO concentration in non-secretors. Note that the Confidence Intervals in this figure

674 differ from those in Table 2 due to Hartung-Knapp (HK) adjustment for random effects model (df = 18).

675 Prediction interval is based on t-distribution (df = 17). g = Hedges' g (bias corrected standardised mean

676 difference). SMD = standardised mean difference, SE = standard error, 2'FL = 2-fucosyllactose, 3FL = 3-

677 fucosyllactose, DFLac = difucosyllactose, DFLNH = difucosyllacto-N-hexaose, DFLNT = difucosyllacto-N-

678 tetraose, FLNH = fucosyllacto-N-hexaose, LNFP I = lacto-N-fucopentaose I, LNFP II = lacto-N-fucopentaose

679 II, LNFP III = lacto-N-fucopentaose III, 3'SL = 3-sialyllactose, 6'SL = 6-sialyllactose, DSLNT =

680 disialyllacto-N-tetraose, DSLNH = disialyllacto-N-hexaose, LST b = sialyllacto-N-tetraose b, LST c =

681 sialyllacto-N-tetraose c, FDSLNH = fucodisialyllacto-N-hexaose, LNH = lacto-N-hexaose, LNnT = lacto-N-

682 neotetraose, LNT = lacto-N-tetraose.

683

684 **Figure 3. Contour enhanced funnel plot for 19 HMOs concentrations between secretors and non-**

685 **secretors.** It shows a scatter plot of the studies' observed effect sizes on the x-axis against a measure of their

686 standard error on the y-axis. The higher values on the y-axis represent HMOs with the lower standard errors.

687 In this diagram there is no indication of asymmetry. 9 HMOs are found in regions of high significance (p

688 <0.01) in [grey zone], 3 in regions of significance (p 0.05) in [black zone], and 6 HMOs in regions of no

689 significance (p < 0.1) in [white zone].

690

691 **Supplementary legends**

692 **Supplementary Table 1: PubMed search syntax for the following research question:** What effect do
693 HMOs in human milk have on brain development, infant growth velocity, and neurodevelopment in breastfed
694 infants?

695 **Supplementary table 2. Newcastle-Ottawa Scale (NOS) for Assessing the Quality of cross-sectional and**
696 **cohort studies.** This tool measures four domains including: participant selection, comparability, exposure, and
697 outcome. The scoring is based on the number of stars, with longitudinal studies receiving up to nine stars.
698 Based on the stars received, a study can be rated high, moderate or low.

699 **Supplementary Table 3:** The effect of removal of an influential study on overall pooled estimate and
700 heterogeneity statistics.

701

Table 1: Summary of selected studies (n = 27).

	Author	Country	Study design	Population (n)	Sample (n)	Secretor (%)	HMO (n)	Technique	Outcome measure
1	Cheema et al., 2022	Australia	Observational	Mothers = 60 Infants = 60	60	81.7	19	HPLC	Growth velocity
2	Mansell et al., 2023	Australia	Observational	Mothers = 292 Infants = 292	292	75.7	19	HPLC	Growth velocity
3	Nuzhat et al., 2022	Bangladesh	Observational	Mothers = 45 Infants = 45	45	55.6	73	HPLC-qTOF-MS	Growth velocity
4	Tonon et al., 2019	Brazil	Observational	Mothers = 78 Infants = 78	78	87.2	16	LC-MS	Growth velocity
5	Ferreira et al., 2021	Brazil	Observational	Mothers = 74 Infants = 74	173	91.9	19	HPLC	Cognitive development
6	Wang et al., 2020	China	Observational	Mothers = 116 Infants = 116	464	81.0	23	HPLC-ESI-MS/MS	Growth velocity
7	Dou et al., 2023	China	Observational	Mothers = 22 Infants = 22	66	68.2	14	IC-LC	Growth velocity
8	Larsson et al., 2019	Denmark	Observational	Mothers = 30 Infants = 30	60	76.7	19	HPLC	Growth velocity
9	Binia et al., 2021	Europe (7 countries)	Observational	Mothers = 357 Infants = 359	2220	63.0	21	HPLC & NMR	Growth velocity
10	Lagström et al., 2020	Finland	Observational	Mothers = 802 Infants = 802	802	87.2	19	HPLC	Growth velocity
11	Rozé et al., 2022	France	Observational	Mothers = 117 Infants = 137	570	80.3	24	HPLC	Growth velocity & Cognitive development
12	Davis et al., 2017	Gambia	Observational	Mothers = 33 Infants = 33	99	63.6	39	Nano-HPLC-Chip/TOF MS	Growth velocity
13	Menzel et al., 2021	Germany	Observational	Mothers = 143 Infants = 143	155	85.3	9	HPLC	Growth velocity
14	Paganini et al., 2019	Kenya	Clinical trial	Mothers = 75 Infants = 75	75	72.0	13	HPAEC-PAD	Growth velocity
15	Charbonneau et al., 2016	Malawi	Observational	Mothers = 303 Infants = 303	303	73.9	50	Nano-HPLC-Chip/TOF MS	Growth velocity
16	Jorgensen et al., 2021	Malawi	Clinical trial	Mothers = 647 Infants = 647	659	75.0	51	Nano-LC chip-TOF MS	Growth velocity & Cognitive development
17	Willemsen et al., 2023	Netherlands	Observational	Mothers = 63 Infants = 63	189	n.s	24	PGC-UPLC-MS / HPAEC-PAD	Cognitive development
18	Samuel et al., 2022	Philippines	Observational	Mothers = 41 Infants = 41	205	73.2	24	HPLC	Growth velocity
19	Sprenger et al., 2017	Singapore	Observational	Mothers = 50 Infants = 50	147	68.0	5	HPAEC	Growth velocity
20	Oliveros et al., 2021	Spain	Clinical trial	Mothers = 82 Infants = 82	82	57.3	2	UPLC-MS/MS	Cognitive development
21	Wejryd et al., 2018	Sweden	Clinical trial	Mothers = 91 Infants = 106	200	94.5	15	HPAEC-PAD	Growth velocity
22	Alderete et al., 2015	USA	Observational	Mothers = 25 Infants = 25	50	72.0	16	HPLC	Growth velocity
23	Berger et al., 2020	USA	Observational	Mothers = 50 Infants = 50	100	86.0	19	HPLC	Cognitive development
24	Berger et al., 2020b	USA	Observational	Mothers = 157 Infants = 157	157	86.0	19	HPLC	Growth velocity
25	Saben et al., 2021	USA	Observational	Mothers = 194 Infants = 194	194	73.2	19	HPLC	Growth velocity
26	Cho et al., 2021	USA	Observational	Mothers = 99 Infants = 99	183	n.s	8	HPLC	Cognitive development
27	Berger et al., 2022	USA	Observational	Mothers = 20 Infants = 20	20	85.0	19	HPLC	Brain development

n.s = not stated; HPLC = high performance liquid chromatography; PGC-UPLC-MS = porous graphitized carbon-ultra high-performance liquid chromatography–mass spectrometry; LC-MS = liquid chromatography-mass; HPLC-ESI-MS = high performance liquid chromatography coupled with negative mode electrospray ionization tandem mass spectrometry; HPAEC-PAD = high-performance anion exchange chromatography with pulsed amperometric detection; Nano-HPLC-Chip/TOF MS = nano-high performance liquid chromatography-chip/time-of-flight (TOF) mass spectrometry; NMR = nuclear magnetic resonance; IC-LC = ion chromatograph liquid chromatography

Table 2: The heterogeneity and estimated average standardized mean differences of 19 HMOs computed by random-effects model

HMO	n	Heterogeneity statistics			Individual HMO random effects	
		I ² (95% CI)	τ ² (95% CI)	p-value	g (95% CI)	p-value
2'FL	12	73.0% (51.9%, 84.8%)	0.28 (0.09, 1.07)	<.001	2.80 (2.40, 3.20)	<.001
3FL	9	98.5% (98.0%, 98.9%)	14.6 (6.53, 57.7)	<.001	0.44 (-2.57, 3.45)	0.746
LNFP I	8	73.6% (46.2%, 87.0%)	0.15 (0.03, 0.69)	<.001	1.45 (1.08, 1.82)	<.001
LNFP II	7	94.1% (89.8%, 96.6%)	0.77 (0.26, 4.67)	<.001	-1.97 (-2.92, -1.02)	0.003
LNFP III	6	94.2% (90.0%, 96.7%)	0.48 (0.15, 3.04)	<.001	-0.85 (-1.61, -0.09)	0.035
FDSLNH	5	52.7% (0.0%, 82.6%)	0.06 (0.00, 1.88)	0.076	-2.07 (-2.58, -1.57)	<.001
FLNH	5	82.9% (61.1%, 92.5%)	0.19 (0.04, 1.82)	<.001	0.28 (-0.33, 0.89)	0.269
DFLNH	5	90.1% (79.8%, 95.2%)	0.52 (0.14, 4.92)	<.001	0.81 (-0.15, 1.77)	0.078
DFLNT	5	94.4% (89.8%, 97.0%)	0.89 (0.28, 7.72)	<.001	1.59 (0.37, 2.80)	0.022
DFIac	5	92.2% (84.7%, 96.0%)	2.76 (0.85, 27.0)	<.001	2.79 (0.60, 4.97)	0.024
3'SL	9	81.2% (65.4%, 89.8%)	0.19 (0.05, 0.77)	<.001	0.21 (-0.17, 0.59)	0.230
6'SL	8	95.7% (93.3%, 97.2%)	0.51 (0.19, 2.07)	<.001	-0.34 (-0.96, 0.26)	0.231
LST b	6	35.5% (0.0%, 74.2%)	0.03 (0.01, 0.15)	0.171	-0.83 (-1.05, -0.60)	<.001
LST c	6	62.4% (8.5%, 84.5%)	0.06 (0.00, 0.44)	0.021	0.65 (0.33, 0.97)	0.004
LNT	8	90.0% (82.7%, 94.2%)	0.25 (0.08, 1.06)	<.001	-0.47 (-0.92, -0.02)	0.043
LNnT	8	87.5% (77.5%, 93.0%)	0.32 (0.10, 1.45)	<.001	0.58 (0.07, 1.09)	0.032
LNH	6	41.9% (0.0%, 77.0%)	0.03 (0.00, 0.48)	0.126	0.05 (-0.24, 0.33)	0.695
DSLNH	5	65.2% (8.8%, 86.7%)	0.09 (0.00, 1.49)	0.021	-0.38 (-0.87, 0.11)	0.099
DSLNT	5	16.1% (0.0%, 82.6%)	0.02 (0.01, 0.18)	0.311	-0.07 (-0.23, 0.16)	0.435

n = Number of studies; I² = Higgins & Thompson's Statistic is the percentage of variability in the effect sizes that is not caused by sampling error, I² = 25%: low heterogeneity, I² = 50%: moderate heterogeneity I² = 75%: substantial heterogeneity; τ² = heterogeneity variance (tau) statistic which quantifies the variance of the true effect sizes underlying our data, if it does not include zero then there is heterogeneity in the data, τ² was estimated using the restricted maximum likelihood (REML) estimator. Hedges' g = bias corrected standardised mean difference. The confidence interval (CI) around the pooled effect was computed using Knapp-Hartung adjustments. The computations were done on meta R package

Identification

Database searches (n=245)

- PubMed (n=67)
- Scopus (n=82)
- Web of Science (n = 96)

Duplicates excluded (n=69)

Screening

Titles screened for eligibility (n=176)

Records excluded after title screening (n=81)

Abstracts Screened for eligibility (n=95)

Abstracts excluded (n=26)

Eligibility

Full text articles evaluated (n=69)

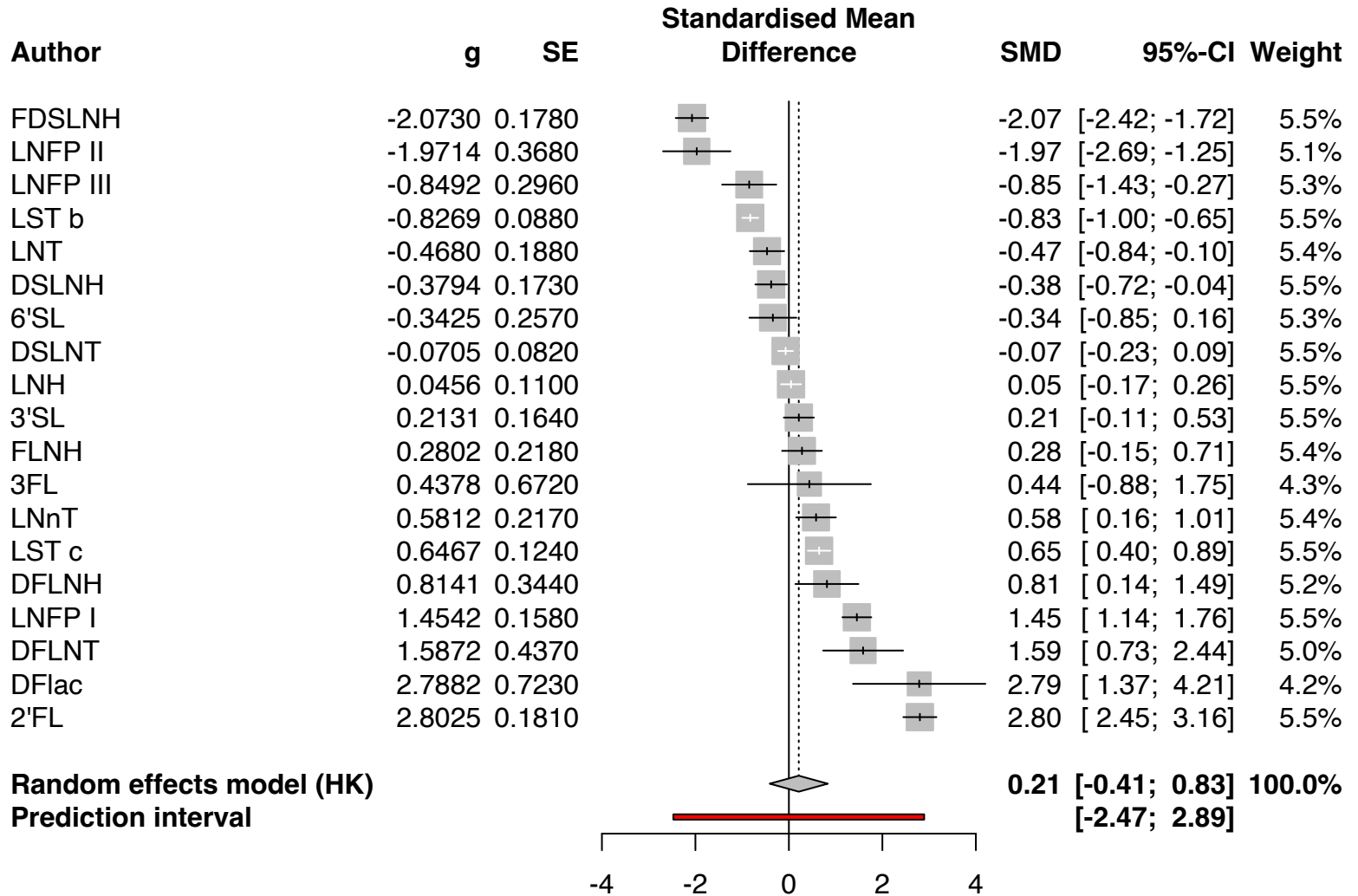
Articles excluded and reason
Not focused on infant growth, brain development or cognitive development (n=42)

Articles Included in systematic review (n=27)

Included

Articles excluded from metaanalysis (n=15)
No comparison between secretors and non-secretors (n=14)
Influential article (n=1)

Articles Included in Meta-analysis (n=12)



Heterogeneity: $I^2 = 97\%$, $\tau^2 = 1.5319$, $p < 0.01$

Contour-enhanced funnel plot (Human Milk Oligosaccharides)

