

1 An exploration into the impact of the
2 COVID-19 pandemic on maternal
3 mental health in high-and middle-
4 income countries with a case study in
5 East Sussex

6
7 Short title: The impact of the COVID-19 pandemic on maternal mental health

8
9
10 Authors: Abbeishna Sabesan^{1*}, Caroline Ackley¹, Sophia Stone¹

11
12 ¹ Brighton and Sussex Medical School (BSMS), Brighton, UK

13 *Corresponding author

15 Abstract

16 Background

17 The physical isolation that the Coronavirus pandemic enforced resulted in a decline in
18 mental health that disproportionately affected higher risk individuals, including women in
19 the perinatal period. The wellbeing of perinatal women was, at times, neglected due to
20 hospital and governmental isolation regulations. The aim of this study was to conduct a
21 scoping review and Key Informant Interviews (KII) to identify gaps and opportunities for
22 further research, and to distinguish discrepancies and correlations between the two
23 sources of information.

24 Methods

25 Two methods were utilised: a scoping review and KIIs. The scoping review identified
26 relevant articles through a database search on Google Scholar, PubMed and EBSCO. The
27 KIIs were conducted virtually with counsellors working in a maternal mental health charity
28 in South-East England. Both methods collected qualitative data and were thematically
29 analysed.

30 Results

31 95 articles were eligible for the review and 5 participants were recruited for the KIIs.
32 Thematic analysis revealed 6 themes in both sources (1) demographics; (2) support; (3)
33 policy; (4) insecurity; (5) anxiety; and (6) milestones. Between the two datasets there were
34 no disparities in the impacts of changing policies, fear of the virus, and the grief caused by
35 missing perinatal milestones on mental health. Significant discrepancies were identified in
36 the influence of demographic characteristics, which was a risk factor for adverse mental
37 health outcomes.

38 **Conclusion**

39 The most prominent theme in the review is the reduced support available, whilst the KIs
40 indicate that changing hospital policies are the main cause of harm to perinatal mental
41 health. Birth trauma is deemed to be of significance in the interviews but not in the
42 literature. Further research should focus on the impact of the pandemic on recovery
43 following birth trauma to identify long-term implications and facilitate policy changes to
44 reduce the risk of birth trauma/ post-traumatic stress disorder.

45

46 **Introduction**

47 The Coronavirus (COVID-19) was first reported in December 2019 and quickly spread to
48 become a global pandemic resulting in unprecedented times. Physical isolation by the
49 public was required to prevent further spread of the virus (1). The enforced isolation had
50 a significant effect on mental well-being, particularly impacting high risk populations.
51 Research by Hermann et al (2021) highlighted that perinatal women, encompassing
52 those who are pregnant, giving birth, or in the first year of parenthood, are among those
53 most affected (2). They are therefore more vulnerable to mental health illness. During the
54 postpartum period, women experience a multitude of life transitions, examples including
55 a transformation in personal identity, and major changes in the dynamics of the
56 relationships with their partner, family, and social life in general. These changes can
57 contribute to negative psychological states and the development of depression, anxiety,
58 and post-traumatic stress disorder (PTSD) (3).

59

60 The precarious situation new mothers find themselves in was exacerbated by the
61 additional pressures of the pandemic. The pandemic left the UK government with no
62 alternative but to enforce physical distancing and isolation. Hospitals implemented
63 essential policies to manage the steep influx of COVID-19 patients and to prevent the
64 spreading of the virus; this had a negative psychological impact on patients (4). Policies
65 were implemented in all hospital departments including the maternity and delivery wards
66 where mothers gave birth in the absence of their partners, experienced reduced
67 postnatal hospital stays, and had limited postnatal visitation hours. The combination of
68 government and hospital policies deprived parents of their experiences and expectations
69 of birth and postnatal plans they originally anticipated. These lost experiences may have
70 been as simple as having their baby bump acknowledged, or having family and friends
71 visit their baby at the hospital, and even as fundamental as having the assistance from
72 healthcare professionals (5).

73

74 Positive maternal mental health is paramount for both mother and baby and can be
75 impacted by adverse pregnancy events with consequent social implications for the baby.
76 Compromised mental health has been linked to obstetric outcomes including, preterm
77 births, fetal growth impairments, pre-eclampsia, and antepartum and postpartum
78 haemorrhages has been explored (6). Furthermore, the long-term consequences on
79 children include requiring tailored educational needs, lack of formal qualifications, and
80 development of emotional and behavioural conduct problems (7).

81

82 A systematic review in 2015 assessed the socio-economic implications of maternal mental
83 health disorders in the UK and showed that the total lifetime cost per woman with
84 perinatal depression and anxiety was £75,728 and £34,811 respectively, which accounted
85 for the cost of health and social care, education, informal caregivers, and criminal justice,
86 as well as losses in quality of life and productivity, for both mother and child. This totalled
87 a countrywide expenditure of £6.6 billion, of which 60% was owed due to the economic
88 burden associated with childhood morbidity (7).

89

90 [Aim and objectives](#)

91 This study aims to explore the impact of the COVID-19 pandemic on maternal mental
92 health in the UK and HMICs, with a particular focus on South-East England. It intends to
93 identify areas in the field of maternal mental health that have been under-researched
94 and overlooked. To do this, a scoping review was conducted along with Key Informant
95 Interviews (KII) with counsellors who provide mental health support to new mums in the
96 South of England. Gaps and opportunities for further research were identified as well as,
97 discrepancies and correlations between the two databases.

98

99 [Rationale](#)

100 A preliminary search on PubMed and Google Scholar was conducted prior to the research
101 study and it was found that there was no scoping review data on maternal mental health
102 from pregnancy to 1-year postpartum during the COVID-19 pandemic. The search also
103 showed predominantly quantitative research with only speculation into causes of poor
104 maternal mental health. In response, this research focused on the analysis of qualitative

105 data to ascertain a description of experiences faced by pregnant women and new
106 mothers during the pandemic. Participants in the studies included in the scoping review
107 were predominantly middle-class, Caucasian, heterosexual women; minority groups are
108 grossly unaccounted for in published data. By conducting the KIIs in the South-East of
109 England, we can investigate a similar demographic and therefore detect any
110 discrepancies present in the studies outlined in the scoping review. Moreover, no studies
111 considered the views and insights of counsellors who supported new mothers during the
112 pandemic and the impact this had on maternal mental health outcomes and experiences.
113 Their experiences are important because counsellors and mental health professionals
114 have first-hand knowledge on the wellbeing of new mothers and can provide
115 recommendations to improve maternal mental health outcomes. Finally, many women
116 who had a baby during the pandemic may be pregnant or planning for a subsequent
117 pregnancy and interviewing counsellors will allow for insight into differences in
118 contributors of maternal mental health pre-pandemic, during the pandemic, and post-
119 pandemic.

120

121 **Methods**

122 This study utilises two main methods: (1) scoping review and (2) KIIs. The scoping review
123 was conducted to gain an understanding of the current research on maternal mental
124 health during the pandemic and to identify research gaps in existing literature. KIIs were
125 conducted with counsellors located in South-East England working in a women's mental
126 health charity during the pandemic. The interviews were conducted in February 2023.

127

128 Ethics

129 Ethical approval was not required for the scoping review component of the research but
130 was needed for the KIIs. Ethical approval was granted for the KIIs by the Brighton and
131 Sussex Medical School (BSMS) Research Governance and Ethics Committee (RGEC) on 16
132 January 2023 (ER/BSMS9EKA/1).

133

134 Scoping review

135 This review followed the methodological framework of Arksey and O'Malley, consisting of
136 five main steps: identifying the research questions, identifying relevant studies, study
137 selection, charting data and finally collating, summarising, and reporting the results (8).

138

139 Step 1: Identifying the research question

140 The research question that guided the scoping review is, *what is known about the impact*
141 *of the COVID-19 pandemic on maternal mental health in the UK and HMICs?* The study
142 population included pregnant women and mothers up to 12 months postpartum. The
143 intervention investigated was the COVID-19 pandemic and this was compared to the
144 situation pre-pandemic. The outcomes explored are the psychological and emotional
145 effects of the COVID-19 pandemic on pregnant individuals and new mothers.

146

147

148 Step 2: Identifying relevant studies

149 A literature search of studies published between 2019 and 2022 was conducted using
150 Google Scholar, PubMed and EBSCO. Table 1 shows the search query used in the
151 databases.

152 *Table 1: Search query used in the databases.*

Search query used in Google Scholar and EBSCO	(Maternal mental health or postnatal mental health or perinatal mental health or antenatal mental health) AND (covid-19 or coronavirus or 2019-ncov or sars-cov-2 or cov-19 or pandemic)
Search query used in PubMed	((covid-19 or coronavirus or 2019-ncov or sars-cov-2 or cov-19) AND (maternal mental health or postnatal mental health or perinatal mental health)) AND (UK or United Kingdom or Great Britain or HMICs or High Middle-Income Countries)

153

154 Step 3: Study selection

155 The studies were screened in a 2-stage process. First, studies were screened based on
156 their title and abstract to decipher whether it fit the inclusion criteria, which consisted of:
157 (a) population of pregnancy to first 12 months postpartum, (b) studies in HMICs and (c) in

158 English. Editorials, letters, commentaries, protocols, and articles without full-text
159 coverage were not eligible for inclusion. Then, the following questions were asked for
160 each study:

- 161 1. Is the article related to maternal mental health in the time of the COVID-19
162 pandemic?
- 163 2. Is the article related to a factor affecting maternal mental health?
- 164 3. Is the article about restrictions put in place at the time of the pandemic?
- 165 4. Is the article about changes in the care of pregnant women in the time of COVID?
- 166 5. Is the article about the care of women in the postnatal phase?

167

168 The article must have met the inclusion criteria and agreed with at least one of the above
169 questions. Articles not meeting this requirement were not considered any further,
170 whereas eligible studies were classified in a database.

171

172 The second screening stage included using the CASP qualitative checklist to assess
173 validity, relevance, and significance of potential articles. A score of 7 or greater was
174 needed to pass the checklist and to be included in the study, whilst those scoring 6 or
175 lower were excluded. CASP scores were included in the database.

176

177 **Steps 4 and 5: Data collection and collating, summarising, and reporting results**

178 Data was extracted from eligible studies into the database to summarize the following:
179 title, author, year of publication, study location, aims, methodology, outcomes, and

180 CASP score. Finally, the remaining articles were analysed using thematic analysis. This
181 analytical approach was used because of the time-efficiency it provided and the
182 flexibility to explore a wide range of concepts (9). Themes were identified according to
183 their potential impact on maternal mental health, which was then included in the
184 database.

185

186 [Key Informant Interviews](#)

187 KIIs were conducted with five participants to gain a better understanding of maternal
188 mental health during the pandemic in South-East England and to provide a comparison to
189 the scoping review results. KIIs were carried out in the South-East of England because this
190 was the base of the investigators conducting the study and recommendations developed
191 from the study could be shared with local stakeholders. A semi-structured interview
192 guide was developed based on themes that emerged from results of the scoping review.
193 The interview guide consisted of open-ended questions that followed a flexible format,
194 thus allowing relevant issues to be discussed in-depth and for new themes to emerge.

195

196 Participants work in a mental health charity that provided support to new mothers during
197 the pandemic and were recruited through a gatekeeper. The charity delivers 10-week
198 postnatal therapeutic groups to mothers up to one-year post-partum. The locality of this
199 organisation made this a practical choice in its cooperation in the study. Approval was
200 gained and potential interviewees were obtained following recruitment email and
201 participant information by the gatekeeper thus ensuring the research team were not
202 involved with participant selection. The recruitment period was between 17/01/2023-

203 6/02/2023. The inclusion criteria for the participants were (a) age >18, (b) consented
204 individuals (c) worked and working in the field of maternal mental health during the
205 COVID-19 pandemic. Five participants responded and were eligible to participate in the
206 study.

207

208 Prior to each interview, verbal consent was obtained, and was documented at the
209 beginning of their transcripts. The KIIs took place over Microsoft Teams and the duration
210 ranged from 45 to 60 minutes and were all audio recorded and transcribed by the lead
211 researcher.

212

213 Transcriptions were read, reviewed, and qualitatively analysed using thematic analysis.
214 Key quotes and its analysis were entered into a database, where its significance was
215 defined, along with a comparison to scoping review data.

216

217 Results

218 Thematic analysis

219 Six themes were identified during analysis of the literature included in the scoping review
220 and the KIIs: (1) support; (2) anxiety; (3) insecurity; (4) policy; (5) milestones; and (6)
221 demographics. Convergence was seen between all the themes. The theme, 'support' was
222 further split into 4 subthemes: (1) social; (2) support groups; (3) domestic support; and
223 (4) healthcare. The issues surrounding healthcare support will be discussed in the 'policy'
224 section as much of the results intersected. Data collected in both methods for each of the
225 above themes will be described separately.

226

227 Scoping review results

228 Search results

229 As represented by the flow diagram in Figure 1, the systematic search identified 687
230 studies. The initial relevance screening excluded 548 studies and a further 34 were
231 removed due to duplication, leaving 105 studies to enter phase 2 of eligibility screening.
232 10 studies were excluded at this stage because they did not score 7 or more with the
233 CASP qualitative checklist, leaving 95 studies to be included in the scoping review.

234

235 *Figure 1: PRISMA flow diagram of studies identified, screened, and extracted*

236

237 Demographics

238 Education level, ethnicity, age, parity, pregnancy stage, employment, income, and
239 socioeconomic status are a few of the demographic characteristics investigated. Some
240 studies highlight different characteristics, like income to be significant (10), whilst others
241 claim that demographics, as one entity, played no role in maternal mental health (11).
242 Three studies state that having a higher education level results in less anxiety and
243 depressive symptoms, and a more supportive experience perinatally (12-14). However,
244 one study claims that there is more anxiety and stress in this group of people (5).
245 Moreover, all studies agree that women of colour are overall disadvantaged compared to
246 their Caucasian counterparts; they feel less supported, find healthcare to be less
247 accessible, they are more worried about employment and are more depressed and
248 anxious (12, 16-19). Other demographic characteristics associated with poorer outcomes

249 are (1) having a lower socioeconomic status, (2) previous mental health diagnosis, (3)
250 having a low income and (4) being unemployed (17, 20, 21). Studies have differing results
251 regarding the impact that age, parity, and pregnancy stage have on maternal mental
252 health.

253

254 Support

255 Fifty-one studies investigate the role of ‘support’ on perinatal mental health; below is the
256 data collected for the subthemes listed above (1, 5, 10, 12, 14, 17-19, 22-60).

257

258 Social support

259 Support from family and friends lacked considerably throughout the pandemic; a total of
260 thirty-nine studies highlight the importance of this (5, 10, 12, 14, 17-19, 23, 24, 26-33, 35-
261 39, 42-44, 46-54, 56, 57, 59-61). Social support is proven to be protective against poor
262 mental health outcomes both in pregnancy and postnatally (36, 51, 53). One UK interview-
263 based study notes the sleep deprivation that follows a lack of support, “I think week two to
264 four was peak tiredness and then that’s the point where I’d really loved either my mum,
265 my mother-in-law, or my own family to sort of step in and be able to help out a bit more”
266 (29). The same study notes the frustrations some women expressed, “particularly with my
267 mum, she’s been self-isolating. We’ve been self-isolating...I can’t see why we can’t see
268 family” (29). However, three studies note that some women appreciate the time they spent
269 without their social network (5, 12, 49), “Women reported having a new appreciation for
270 quiet moments, family time, and a slower pace. Some expressed appreciation for stay at-

271 home requirements that allowed more time together with their partner and more sharing
272 of parenting responsibilities” (5).

273

274 Support groups

275 Ten studies mentioned the importance of attending parenting groups and their potential
276 benefits, such as meeting and forming friendships with new mothers (17, 18, 25, 29, 34,
277 39, 51, 52, 58, 61). Parenting groups are seen as a place to get invaluable social exposure
278 and advice associated with improving one’s emotional wellbeing (29). Although, during
279 the pandemic some groups ran online, most women found that the in-person experience
280 was irreplaceable (25).

281

282 Domestic support

283 Issues surrounding domestic support were discussed in thirteen studies (14, 17, 19, 23,
284 25, 27, 31, 37, 38, 41, 46, 51, 52). Data shows that women tend to bear a larger burden
285 than men in addressing these pressures and was proven in a Canadian study that fifty
286 more hours were spent by the average woman on childcare during the pandemic as
287 opposed to the average man (14). The bearing of this workload was established in a US
288 nationwide study where it was found that 56.3% of women found the lack of childcare to
289 be stressful (41). Managing the demands of their newborn whilst also supervising their
290 older children’s home-schooling was taxing. Guilt was often felt as time spent with older
291 children was compromised compared to that of younger children (25).

292

293 Policy

294 The issues surrounding the implementation of hospital and governmental guidelines was
295 raised in twenty-two studies (1, 4, 12, 23, 24, 26, 29, 32, 34, 37-40, 44, 45, 53, 55, 62-65).
296 Policies were everchanging and not well communicated by hospitals, causing confusion and
297 uncertainty; birth plans were altered to satisfy these new regulations (4). Several policies did
298 not permit visitors following the birth, and the presence of the partner was disallowed in
299 appointments and at the birth itself (38). Additionally, seventeen studies discuss the issues
300 surrounding an absent partner (17, 19, 24, 25, 28, 30, 32, 34, 37, 38, 40, 44, 52, 54, 55, 59,
301 60). For example, a study including 6894 participants in 64 different countries, shows that
302 these hospital policies, affected 41% to 59% of mothers (32). Maternal healthcare was
303 grossly inaccessible and appointments were constantly being cancelled (55). The
304 appointments were primarily over the phone and often rushed, triggering a sense of
305 abandonment and dismissal in pregnant women (24). Face-to-face appointments were
306 uncommon, but when they occurred, healthcare professionals were in PPE and were told to
307 avoid having any physical contact (34). Overall, the literature suggests that mothers felt
308 unsupported by healthcare professionals and a total of twenty-one studies alluded to this (1,
309 12, 17, 18, 23-26, 28, 29, 32, 34, 37-39, 41, 44, 45, 55, 57, 58).

310

311 Insecurity

312 Insecurity, encompassing feelings of uncertainty, was common and described in twenty-
313 one studies (4, 5, 13, 18, 21, 23, 25, 26, 31, 32, 36-38, 41, 66-70). Job and financial security
314 were a major source of concern in the pandemic, with women mainly worrying about their

315 partner losing their job and not being able to provide for their baby (4, 13, 25). For some,
316 this unemployment resulted in the inability to buy clothes for their child and instead rely on
317 presents they had been given (68). The UK's furlough scheme, a policy in which employers
318 received 80% of their salary from the UK government and temporarily stopped employee
319 wages, was mentioned in one study and stated that it mitigated this situation in the latter
320 parts of the pandemic (71). Financial security also includes women either losing their own
321 job or being forced to reduce their working hours due to unproductivity at home that
322 followed managing new responsibilities of this new working environment, such as childcare
323 (37). Moreover, a limited availability of essentials such as food, medicines, and baby
324 supplies, for example nappies and formula, was also a source of insecurity. A US study found
325 that of the 2740 surveyed pregnant women, 59.2% and 63.7% were stressed about food
326 running out and losing their job or household income respectively (41).

327

328 Anxiety

329 Thirty-five studies investigated perinatal anxiety which was often in reference to a
330 mother's fear of the virus, leading them to follow the news and social media excessively
331 to gain clarity of the situation, which in turn led to further enhancement of this anxiety (1,
332 4, 5, 18, 19, 23, 25, 26, 28-32, 35-37, 39-41, 43, 44, 52, 54, 56, 58-60, 68, 72-77). One US
333 study proved that time spent watching COVID-related media content was linked to
334 mental health symptom severity. Those viewing this content for more hours in a day were
335 more likely to experience anxiety symptoms (5).

336

337 The literature states that dilemmas were faced at times when certain worrisome
338 pregnancy symptoms were experienced, which would normally lead them to go to the
339 hospital or maternity assessment unit, however mothers found themselves too afraid of
340 going (29). Women most feared that either themselves, their baby, or loved ones would
341 contract COVID; this was of concern not only during the pandemic, but also in the period
342 of which there was easing of restrictions and social distancing (25).

343

344 With reduced support from family and friends, there was anxiety around the competency
345 of their own parenting, as well as the wellbeing of their baby and its impact on their
346 development caused by the lack of exposure to other children and people (35). Anxiety
347 was also the result of certain insecurities mentioned previously namely, scarcities in food
348 and uncertainties in employment (23).

349

350 Milestones

351 The grief experienced by parents because of missing key milestones was articulated in
352 eight studies (5, 19, 29, 31, 34, 64, 68, 78). Antenatally, women were forced to cancel or
353 have virtual baby showers, as well as miss out on attending in-person birthing classes (19,
354 34). They were deprived of the opportunity to shop for baby furniture and clothes and
355 were unable to display their baby bump (34). Furthermore, some felt that their maternity
356 leave had been wasted as everyone was staying at home already (31). Postnatally, their
357 baby was unable to form relationships with grandparents or other loved ones (29).
358 Ultimately parents felt as if they had missed out on celebrating the birth of their child and
359 received an inadequate new-born's experience (64).

360

361 Key Informant Interview results

362 Participant characteristics

363 Nine counsellors were contacted by the gatekeeper, seven of which responded and five
364 met the inclusion criteria and were interviewed by the lead researcher. All the
365 participants were trained counsellors with various roles in the charity, including two lead
366 facilitators, counsellors who run group therapy sessions; two support facilitators, who run
367 smaller group discussions; and the founder. Their time spent working in the field of
368 maternal mental health ranged from two to over ten years.

369

370 Demographics

371 Four participants concluded that a higher education level resulted in better maternal
372 mental health outcomes. For example, one participant considered mothers in town A to
373 be better educated and of a higher socioeconomic group than those in town B, “The
374 mums in town A knew how to stay calm, and they knew more about their babies, and
375 perhaps read more. But mums in town B, were more hopeless, when it came to things
376 like that. They didn’t have the knowledge to inform what they were going through”
377 (Participant 2). The same participant recounted her experience at a distressing support
378 group she led in town B, “I noticed more in town B that the voices of the mums were less
379 heard. I don’t know if this was because they didn’t feel able to ask for what they needed,
380 maybe less sense of self-importance, so maybe they didn’t challenge some of the things
381 the hospital was saying versus the people in town A whose self-worth was higher. In one

382 group at town B, every mum was crying. This was the most traumatic group I've ever
383 done.”

384

385 Four participants showed discomfort when questioned on the impact of demographics on
386 maternal mental health, “I find these questions difficult because I feel bad, it’s
387 patronizing. I find this difficult to talk about” (Participant 5).

388

389 Social support

390 A lack of social support was expressed by four interviewees, “Suddenly mums became
391 very isolated from support networks who would have normally helped a new mum
392 practically and emotionally. All the pressure was on the parents to do everything”
393 (Participant 4). This ultimately resulted in mothers compromising their selfcare, “Mums
394 say managing to have a shower is a huge achievement. Some are able to do this if they
395 have supportive partner” (Participant 1). Participant 5 states that lack of social support
396 was not mentioned as “They didn’t know any different”. She went on to say, “The extra
397 family support is really important in the early days, but they didn’t realise that. So,
398 they’re hard on themselves and think they’re doing a bad job, but they don’t realise how
399 challenging it is to do by themselves”.

400

401 Support groups

402 Kils stressed the value of attending support groups as attendees were assured that their
403 experience was being reciprocated by mothers in a similar same situation, “it was
404 refreshing for their feelings to be normalised and to hear other mothers were in line with

405 what they were feeling” (Participant 2). Furthermore, attending support groups
406 “improves their confidence and their ability to regulate their anxiety and low mood”
407 (Participant 1). Another KII reveals that support groups are potentially more valuable than
408 the support from family and friends, “When people share birth experience with friends
409 and family, they put a positive spin to it, and make mums feel like they can’t share, but
410 being in this space will allow people to hold that grief” (Participant 1). On the contrary,
411 one participant revealed a negative side of support groups, “It’s competitive or they just
412 put on a brave face as they want people to think that they have it all together through
413 social media” (Participant 1).

414

415 Domestic support

416 The issue of increased domestic work was brought up by two participants, “During the
417 pandemic, I knew mums who needed to keep a house in order, home-school other
418 children, manage employment. All these added pressures, whilst not being able to receive
419 support to refuel themselves...Not being able to go fully outside to enjoy things that can
420 be replenishing, for example exercise being a taken away, added to the intensity to the
421 home” (Participant 4). This increased workload led to, “Feelings of shame and guilt that
422 they couldn’t keep up with it. It’s harder to leave their space, so you’re sticking with the
423 mess” (Participant 5). On the contrary, two participants stated, “The pressure was left a
424 little bit. No one's going to come over. It (domestic work) didn’t make a difference or to a
425 certain extent there was less pressure” (Participant 4).

426

427 Policy

428 All participants discuss the effects of changing policies. Disallowing partners at the birth
429 and at antenatal appointments meant that, in the case of receiving bad news, such as the
430 loss of a pregnancy, women were unaccompanied. Also, birthing alone required them to
431 advocate for themselves at a time of vulnerability: “They’re frightened, they don’t know if
432 this is normal. They’re in pain, wondering what their option for pain relief is with no
433 doctor or midwife there in that moment” (Participant 4). One support facilitator recounts
434 a traumatic birth story of one mother; the quotation demonstrates the effect of an
435 absent support partner, who would have made logical decisions in the best interests of
436 the mother, “A young girl had been given a really strong painkiller, against her will.
437 Against their will, in the sense that when you’re in labour and you feel that you don’t
438 have choice, partner wasn’t there, and they made it seem like you had to take this. The
439 way she saw it was like they were sedating women because they were so overcrowded
440 that there was nothing they could do. She really didn’t want to take it, she said it made
441 her feel really ill, but she also couldn’t remember the first few hours of her baby being
442 born because it was such a strong drug. A few other people have said similar things
443 where they were given strong drugs which they wouldn’t normally accept, and they
444 wouldn’t normally have been rushed to take them but did because of the overcrowded
445 element” (Participant 5).

446

447 Postnatally, mothers were not allowed visitors, leaving hospital staff to assist them more
448 than they typically would, “Normally, family would help the mum, bring food and going to
449 the toilet. All of that was on the staff but they were just so inundated with so much to do.

450 So that was a policy, they ended up changing to just one person being allowed to visit for
451 limited periods of time. All of these policies really impacted people feeling supported at a
452 really vulnerable time having just given birth” (Participant 4).

453

454 Interviewees described the situation of lacking hospital support before the above policy
455 modification, “They were left at a scary time when they’ve just had a baby and you’re
456 hurting physically and no one’s there to get a glass of water or pass the baby and you
457 have to do it all yourself and your partner can’t be there” (Participant 2).

458

459 Additionally, moving from a homebirth to a hospital birth was a change that often
460 occurred. One KII participant explains, “You’re trying to avoid the medical environment. It
461 was bad pre-pandemic, but then in the pandemic, with all the tests and wearing masks, if
462 you’re already inclined to not have this part of your birth, it must have been harder in the
463 pandemic because it was especially medicalised” (Participant 5).

464

465 Rushed and inaccessible healthcare further exacerbated the usual anxiety that comes
466 with becoming a new mother, “Concerns weren’t really addressed. They had no one to
467 turn to for help. When you’re a new mum you’re so anxious about everything, like am I
468 feeding enough?” (Participant 2). Additionally, the midwives wearing PPE resulted in,
469 “not having the tactile support that sometimes mums need. Everything was distanced
470 and removed a sense of support” (Participant 4).

471

472 Insecurity

473 One participant speaks about financial concerns, “One mum in particular, whose partner
474 was working in advertising and because events stopped, she made the decision of going
475 back to work much sooner because her career was more stable. So, it created a lot of
476 distress, especially for mums who weren’t ready to go back” (Participant 4). The
477 interviewee, with over ten years of experience, explains that often maternity leave acts as
478 a reflection period during which mothers can question their professional identity.
479 Therefore, shortening maternity leave, restrains mothers in making potentially key life
480 decisions. Participants 2 and 3 state that financial security is insignificant, “I think if
481 people were furloughed, it wasn’t a terrible thing. No, I don’t think this was much of a
482 worry” (Participant 3). Moreover, two participants expressed mothers worrying about the
483 insufficiency of resources, “They felt insecure about getting food, toilet roll, nappies”
484 (Participant 3). Feelings of insecurity and unsafeness at home was raised, “A couple of
485 mums at some point during the pandemic, said their relationship had become abusive”
486 (Participant 2).

487

488 Anxiety

489 All participants discuss the anxiety that came with contracting COVID, “Would my baby be
490 okay? Would I be okay? ... They were very afraid of taking their child out of the house.
491 This had a knock-on impact as this meant that mums were being stuck at home... but also
492 staying at home made them anxious because it fed into them feeling isolated”
493 (Participant 4). KIIs indicate that there was anxiety related to rules being ambiguous and
494 even though mothers didn’t feel comfortable socialising, they were unsure on how to

495 deal with those who wanted to. The result of this anxiety was conveyed in the interview
496 of a lead facilitator working in the field for over three years, “A lot of people were having
497 dark intrusive thoughts, meaning they were constantly thinking something was going to
498 happen to them or their baby. Mums said that they used to be walking down the streets,
499 and they thought that a car was going to crush them. This doesn’t happen anymore, but
500 certainly heightened in the pandemic.” (Participant 2).

501

502 Milestones

503 Grief surrounding missed milestones was universal to all five participants, “No one saw
504 them pregnant, no one celebrated their pregnancy. They didn’t feel that they could show
505 off their bump. Couldn’t have baby showers. Some people didn’t meet baby until two or
506 three months and even then, they were scared they would give COVID to baby”
507 (Participant 2). Another interviewee took this further by stating that, “This idealized time
508 of becoming parent wasn’t what they wanted. So, normalizing that this was a loss, and
509 feelings of anger is normal and makes sense ...There was a real sense of sadness that
510 came out with symptoms such as depression” (Participant 4).

511

512 Strengths and Limitations

513 Our recruitment strategy minimised chances of selection bias as a gatekeeper was
514 appointed to select potential interview participants. Bias arising from individual studies
515 included in the scoping review was minimal owing to the use of the CASP qualitative
516 checklist. Nevertheless, the study has limitations that must be addressed. Interviewees

517 were expected to recount past encounters, introducing recall bias which may have led to
518 either the over or under exaggeration of data (80). Inclusion bias may have been
519 introduced since only articles published in English were included, potentially reducing the
520 breadth of data analysed. The internal validity may have been compromised as there was
521 a single investigator selecting studies and analysing data, rendering the study susceptible
522 to selection bias (81). Additionally, the interview guide was developed based on the
523 themes extracted from the scoping review. Whilst this ensured that the interview
524 explored relevant concepts, this could have potentially limited the emergence of new
525 themes and constrained the findings to what had already been explored. Moreover, time
526 constraints limited the number of organisations approached and consequently the
527 number of participants included in the study. Recruitment of more experts would have
528 enhanced the validity of the findings.

529

530 Discussion

531 Several key themes were identified in the KIIs and the literature review, however the
532 most prominent theme in the literature review was the reduced support available to
533 mothers, (57% of the studies). Whereas KIIs indicate that changing hospital policies was
534 the most detrimental to perinatal mental health. This divergence emphasises the
535 complexity of perinatal mental health and demonstrates that no single theme can fully
536 encapsulate the spectrum of influences on mental health during the perinatal period.

537

538 The influence of various demographic characteristics on maternal mental health was
539 inconclusive; being of an ethnic minority was the only characteristic deemed significant in

540 causing poorer mental health outcomes. Evidence from the KIIs was limited as
541 participants predominantly worked during the pandemic with first-time mothers of a
542 British, Caucasian, and middle-class background, providing no substantial demographic
543 diversity.

544

545 There is therefore merit for further investigation which will help to identify demographic
546 characteristics that render a woman vulnerable to poor mental health outcomes. This
547 could facilitate the establishment of an antenatal screening programme aimed at
548 identifying individuals at risk, in doing so provide early support during their pregnancy, to
549 prevent any long-term sequelae of delayed identification of mental health conditions.

550 Moreover, amongst the interviewees, there was an underlying discomfort in discussions
551 surrounding demographics, which implies that there might be an underlying
552 stigmatisation which they find difficult to portray; further investigation needs to go into
553 this.

554

555 KIIs and literature data reveal that poor birth experiences were caused by rules inhibiting a
556 birth partner, as well as the inaccessibility and intangibility of healthcare, which ultimately
557 resulted in insufficient care and a distrust in medical professionals. Additionally, there is
558 substantial evidence in both databases that indicate that the obscurity of the virus caused
559 fear and, in some cases, a paranoia about unlikely incidents. A longitudinal study exploring
560 the long-term psychological consequences of the pandemic, would be a valuable addition to
561 the database, for example whether COVID regulations resulted in the development of new
562 behaviours such as a health seeking avoidance.

563

564 While both the literature review and the KIIs stress the negative implications of hospital
565 policies, only the KIIs discuss birth trauma to be a consequence of it. Interestingly, all five
566 participants observed the pronounced influence the pandemic had on birth trauma, while
567 the literature review did not. Therefore, this provides new insight into the relationship
568 between policies and mental health. Investigation into the impact of the pandemic on
569 birth trauma should be coordinated to identify any long-term implications. This research
570 will provide a solid rationale for any necessary policy changes adopted in the future to
571 reduce the risk of birth trauma and consequently, mitigating subsequent repercussions.
572 Bethany Kotlar et al demonstrated that the incidences of stillbirth and neonatal mortality
573 were significantly higher during the pandemic (23). Although multifactorial, contributing
574 to this higher incidence during the pandemic, was the reduction in antenatal and
575 postnatal appointments and the reluctance for hospital attendance and/or admissions
576 thereby missing early warning signs and possible opportunities to mitigate morbidity and
577 potentially mortality.

578

579 Amongst the interviewees, there are differing opinions on the role that feelings of
580 insecurity had on mental health. This was not in line with the scoping review, as it was
581 seen to be a considerable detriment to perinatal mental health. This is backed up by a US
582 study's findings that of the 2740 surveyed pregnant women, 59.2% and 63.7% were
583 stressed about food running out and losing their job or household income respectively
584 (41). These results provide insight into the potential sources of stress during the
585 pandemic specifically. However, post-pandemic these concerns are likely to continue to
586 be relevant, due to the current cost-of-living crisis, in which several countries are

587 experiencing price increases in daily goods and services (79). Therefore, it is essential that
588 these insecurities are queried and addressed in antenatal appointments, to ensure that
589 perinatal mental health isn't harmed further.

590

591 National lockdowns resulted in months of restricted face-to-face interaction, causing the
592 withdrawal of social support that parents often rely on with a newborn (25). In line with
593 the findings of Amelia Ryan and Carol Barber who illustrated the significance of the
594 saying, 'it takes a village to raise a child' (37), Participant 4 agreed with this fact by
595 exploring the diverse responsibilities of parenthood, from providing sustenance and
596 comfort to engaging in play, and emphasised the significance of distributing these duties
597 effectively. It is important to highlight this fact as, according to Participant 4, women who
598 experienced childbirth amidst the pandemic are presently expecting their second child,
599 and as previously stated by Participant 5, new parents are accustomed to the isolation of
600 the pandemic and so were unfamiliar with the significance of the support their social
601 network could provide, and so it is vital that they are informed of the value of seeking
602 help from others.

603

604 Maternal grief was an outcome of missed pregnancy and postnatal experiences and the
605 relevance of this on maternal mental health was shared by the interviewees as well as the
606 scoping review; the KIIs described this as a "shattering of expectations" that eventually
607 led to depression and anger. This correlates with concepts demonstrated in other
608 themes, namely the dismissive manner of hospitals, the non-existent social networks, the
609 extra sources of anxiety, and the financial situation parents found themselves in.

610

611 Raising a baby alone, having been victims to a healthcare system working at full capacity,
612 and the withdrawal of their social network, gave rise to feelings of apprehension in many
613 women’s parenting proficiency. Reliance on primordial instincts were discussed in KIIs for
614 managing this trepidation, along with the importance of mothers placing trust in
615 themselves due to the limited support available to them. This finding ties well with
616 previous studies wherein ‘resilience’ was seen as being a positive contributor to mental
617 health outcomes. One study published in 2022 found that practicing coping and
618 relaxation strategies promoted resilience perinatally (33). Developing a
619 psychoeducational intervention promoting and training mothers to be resilient would be
620 a valuable trait to acquire, especially with the ongoing cost-of-living crisis.

621

622 Acknowledgements

623 We would like to thank the Brighton and Sussex Medical School Independent Research
624 Project module examiners and markers for their constructive feedback on this project.

625

626 References

627

- 628 1. Anderson, M., et al., Exploring social complexities of the COVID-19 pandemic on
629 maternal anxiety: A mixed-methods observational cohort study. European Journal
630 of Midwifery, 2022. 6(October): p. 1-9.

- 631 2. Davenport, M.H., et al., Moms are not OK: COVID-19 and maternal mental health.
632 Frontiers in global women's health, 2020: p. 1.
- 633 3. Huschke, S., S. Murphy-Tighe, and M. Barry, Perinatal mental health in Ireland: a
634 scoping review. Midwifery, 2020. 89: p. 102763.
- 635 4. Meaney, S., et al., The impact of COVID-19 on pregnant womens' experiences and
636 perceptions of antenatal maternity care, social support, and stress-reduction
637 strategies. Women and Birth, 2022. 35(3): p. 307-316.
- 638 5. Kinser, P.A., et al., Depression, anxiety, resilience, and coping: the experience of
639 pregnant and new mothers during the first few months of the COVID-19
640 pandemic. Journal of women's health, 2021. 30(5): p. 654-664.
- 641 6. Howard, L.M. and H. Khalifeh, Perinatal mental health: a review of progress and
642 challenges. World Psychiatry, 2020. 19(3): p. 313-327.
- 643 7. Bauer, A., M. Knapp, and M. Parsonage, Lifetime costs of perinatal anxiety and
644 depression. Journal of affective disorders, 2016. 192: p. 83-90.
- 645 8. Arksey, H. and L. O'Malley, Scoping studies: towards a methodological framework.
646 International journal of social research methodology, 2005. 8(1): p. 19-32.
- 647 9. Braun, V. and V. Clarke, Using thematic analysis in psychology. Qualitative
648 research in psychology, 2006. 3(2): p. 77-101.
- 649 10. Dib, S., et al., Maternal mental health and coping during the COVID-19 lockdown
650 in the UK: Data from the COVID-19 New Mum Study. International Journal of
651 Gynecology & Obstetrics, 2020. 151(3): p. 407-414.
- 652 11. Pope, J., et al., Prenatal stress, health, and health behaviours during the COVID-19
653 pandemic: An international survey. Women and Birth, 2022. 35(3): p. 272-279.

- 654 12. Brown, A. and N. Shenker, Experiences of breastfeeding during COVID-19: Lessons
655 for future practical and emotional support. *Maternal & child nutrition*, 2021.
656 17(1): p. e13088.
- 657 13. Ceulemans, M., et al., Mental health status of pregnant and breastfeeding women
658 during the COVID-19 pandemic—A multinational cross-sectional study. *Acta*
659 *obstetrica et gynecologica Scandinavica*, 2021. 100(7): p. 1219-1229.
- 660 14. Gildner, T.E., et al., Associations between postpartum depression and assistance
661 with household tasks and childcare during the COVID-19 pandemic: evidence from
662 American mothers. *BMC Pregnancy and Childbirth*, 2021. 21(1): p. 1-14.
- 663 15. Loret de Mola, C., et al., Maternal mental health before and during the COVID-19
664 pandemic in the 2019 Rio Grande birth cohort. *Brazilian Journal of Psychiatry*,
665 2021. 43: p. 402-406.
- 666 16. Masters, G.A., et al., Impact of the COVID-19 pandemic on mental health, access
667 to care, and health disparities in the perinatal period. *Journal of psychiatric*
668 *research*, 2021. 137: p. 126-130.
- 669 17. Wall, S. and M. Dempsey, The effect of COVID-19 lockdowns on women's perinatal
670 mental health: a systematic review. *Women and Birth*, 2022.
- 671 18. Barbosa-Leiker, C., et al., Stressors, coping, and resources needed during the
672 COVID-19 pandemic in a sample of perinatal women. *BMC pregnancy and*
673 *childbirth*, 2021. 21(1): p. 1-13.
- 674 19. Burgess, A., et al., Impact of COVID-19 on pregnancy worry in the United States.
675 *Birth*, 2022. 49(3): p. 420-429.

- 676 20. Liu, C.H., et al., Subjective social status, COVID-19 health worries, and mental
677 health symptoms in perinatal women. *SSM-population health*, 2022. 18: p.
678 101116.
- 679 21. Ho-Fung, C., et al., Self-reported mental health status of pregnant women in
680 Sweden during the COVID-19 pandemic: a cross-sectional survey. *BMC pregnancy
681 and childbirth*, 2022. 22(1): p. 1-12.
- 682 22. Kara, P., et al., Post-traumatic stress disorder and affecting factors in pregnant
683 women in the COVID-19 pandemic. *Psychiatria Danubina*, 2021. 33(2): p. 231-239.
- 684 23. Kotlar, B., et al., The impact of the COVID-19 pandemic on maternal and perinatal
685 health: a scoping review. *Reproductive health*, 2021. 18: p. 1-39.
- 686 24. Vazquez-Vazquez, A., et al., The impact of the Covid-19 lockdown on the
687 experiences and feeding practices of new mothers in the UK: Preliminary data
688 from the COVID-19 New Mum Study. *Appetite*, 2021. 156: p. 104985.
- 689 25. Jackson, L., et al., Postpartum women's psychological experiences during the
690 COVID-19 pandemic: a modified recurrent cross-sectional thematic analysis. *BMC
691 pregnancy and childbirth*, 2021. 21(1): p. 1-16.
- 692 26. Anderson, E., et al., Pregnant women's experiences of social distancing
693 behavioural guidelines during the Covid-19 pandemic 'lockdown' in the UK, a
694 qualitative interview study. *BMC Public Health*, 2021. 21: p. 1-12.
- 695 27. Zhou, J., et al., Changes in social support of pregnant and postnatal mothers
696 during the COVID-19 pandemic. *Midwifery*, 2021. 103: p. 103162.
- 697 28. Filippetti, M.L., A.D.F. Clarke, and S. Rigato, The mental health crisis of expectant
698 women in the UK: effects of the COVID-19 pandemic on prenatal mental health,

- 699 antenatal attachment and social support. BMC pregnancy and childbirth, 2022.
700 22(1): p. 1-10.
- 701 29. Jackson, L., et al., Postpartum women's experiences of social and healthcare
702 professional support during the COVID-19 pandemic: A recurrent cross-sectional
703 thematic analysis. Women and Birth, 2022. 35(5): p. 511-520.
- 704 30. Camoni, L., et al., The Impact of the COVID-19 Pandemic on Women's Perinatal
705 Mental Health: Preliminary Data on the Risk of Perinatal Depression/Anxiety from
706 a National Survey in Italy. International journal of environmental research and
707 public health, 2022. 19(22): p. 14822.
- 708 31. Anderson, M.R., et al., Stress, coping and silver linings: How depressed perinatal
709 women experienced the COVID-19 pandemic. Journal of Affective Disorders, 2022.
710 298: p. 329-336.
- 711 32. Bridle, L., et al., Supporting perinatal mental health and wellbeing during
712 COVID19. International journal of environmental research and public health, 2022.
713 19(3): p. 1777.
- 714 33. Thomson, G., et al., Resilience and post-traumatic growth in the transition to
715 motherhood during the COVID-19 pandemic: A qualitative exploratory study.
716 Scandinavian Journal of Caring Sciences, 2022. 36(4): p. 1143-1155.
- 717 34. McKinlay, A.R., D. Fancourt, and A. Burton, Factors affecting the mental health of
718 pregnant women using UK maternity services during the COVID-19 pandemic: a
719 qualitative interview study. BMC pregnancy and childbirth, 2022. 22(1): p. 1-15.
- 720 35. Fallon, V., et al., Psychosocial experiences of postnatal women during the
721 COVID19 pandemic. A UK-wide study of prevalence rates and risk factors for

- 722 clinically relevant depression and anxiety. Journal of psychiatric research, 2021.
723 136: p. 157-166.
- 724 36. Koyucu, R.G. and P.P. Karaca, The Covid 19 outbreak: maternal mental health and
725 associated factors. Midwifery, 2021. 99: p. 103013.
- 726 37. Ryan, A. and C. Barber, Postnatal depression and anxiety during the COVID-19
727 pandemic: The needs and experiences of New Zealand mothers and health care
728 providers. Midwifery, 2022. 115: p. 103491.
- 729 38. Jones, K., et al., A qualitative analysis of feelings and experiences associated with
730 perinatal distress during the COVID-19 pandemic. BMC Pregnancy and Childbirth,
731 2022. 22(1): p. 1-19.
- 732 39. Lega, I., et al., The psychological impact of COVID-19 among women accessing
733 family care centers during pregnancy and the postnatal period in Italy.
734 International Journal of Environmental Research and Public Health, 2022. 19(4): p.
735 1983.
- 736 40. Yakupova, V., A. Suarez, and A. Kharchenko, Birth Experience, Postpartum PTSD
737 and Depression before and during the Pandemic of COVID-19 in Russia.
738 International journal of environmental research and public health, 2022. 19(1): p.
739 335.
- 740 41. Moyer, C.A., et al., Pregnancy-related anxiety during COVID-19: a nationwide
741 survey of 2740 pregnant women. Archives of women's mental health, 2020. 23: p.
742 757-765.
- 743 42. Sakalidis, V.S., et al., Longitudinal changes in wellbeing amongst breastfeeding
744 women in Australia and New Zealand during the COVID-19 pandemic. European
745 journal of pediatrics, 2022. 181(10): p. 3753-3766.

- 746 43. Brik, M., et al., Psychological impact and social support in pregnant women during
747 lockdown due to SARS-CoV2 pandemic: A cohort study. *Acta obstetrica et*
748 *gynecologica Scandinavica*, 2021. 100(6): p. 1026-1033.
- 749 44. Javaid, S., et al., The impact of COVID-19 on prenatal care in the United States:
750 Qualitative analysis from a survey of 2519 pregnant women. *Midwifery*, 2021. 98:
751 p. 102991.
- 752 45. Morniroli, D., et al., Exploring the impact of restricted partners' visiting policies on
753 non-infected mothers' mental health and breastfeeding rates during the covid-19
754 pandemic. *International Journal of Environmental Research and Public Health*,
755 2021. 18(12): p. 6347.
- 756 46. Zhang, C.X.W., et al., Evaluating depression and anxiety throughout pregnancy
757 and after birth: impact of the COVID-19 pandemic. *American Journal of Obstetrics*
758 *& Gynecology MFM*, 2022. 4(3): p. 100605.
- 759 47. Chapman, G.E., I. Ishlek, and J. Spoons, Google search behaviour relating to
760 perinatal mental wellbeing during the United Kingdom's first COVID-19 lockdown
761 period: a warning for future restrictions. *Archives of Women's Mental Health*,
762 2021. 24: p. 681-686.
- 763 48. Perez, A., et al., Experience of early motherhood during the first wave of the
764 COVID-19 pandemic in Northern Germany: a single-centre before and after
765 comparison. *Journal of reproductive and infant psychology*, 2021: p. 1-17.
- 766 49. Jeličić, L., et al., Maternal Anxiety and Its Associated Factors During the First and
767 Second Wave of COVID-19 Pandemic in Serbia: A Cross-Sectional Study.
768 *Psychology Research and Behavior Management*, 2022: p. 3775-3792.

- 769 50. Lequertier, B., et al., Perinatal depression in Australian women during the
770 COVID19 pandemic: The birth in the time of COVID-19 (BITTOC) study.
771 International journal of environmental research and public health, 2022. 19(9): p.
772 5062.
- 773 51. Lin, H.-C., et al., Maternal self-efficacy buffers the effects of COVID-19–related
774 experiences on postpartum parenting stress. Journal of Obstetric, Gynecologic &
775 Neonatal Nursing, 2022. 51(2): p. 177-194.
- 776 52. Farewell, C.V., et al., A mixed-methods pilot study of perinatal risk and resilience
777 during COVID-19. Journal of Primary Care & Community Health, 2020. 11: p.
778 2150132720944074.
- 779 53. Corno, G., et al., The role of perceived social support on pregnant women’s
780 mental health during the COVID-19 pandemic. Journal of Reproductive and Infant
781 Psychology, 2022: p. 1-15.
- 782 54. Orsolini, L., et al., Fear and anxiety related to COVID-19 pandemic may predispose
783 to perinatal depression in Italy. Frontiers in psychiatry, 2022. 13.
- 784 55. Groulx, T., et al., Prenatal care disruptions and associations with maternal mental
785 health during the COVID-19 pandemic. Frontiers in Global Women's Health, 2021.
786 2: p. 648428.
- 787 56. Grumi, S., et al., Depression and anxiety in mothers who were pregnant during the
788 COVID-19 outbreak in Northern Italy: the role of pandemic-related emotional
789 stress and perceived social support. Frontiers in Psychiatry, 2021. 12: p. 716488.
- 790 57. Pacheco, F., et al., Breastfeeding during COVID-19: a narrative review of the
791 psychological impact on mothers. Behavioral Sciences, 2021. 11(3): p. 34.

- 792 58. Preis, H., et al., Vulnerability and resilience to pandemic-related stress among US
793 women pregnant at the start of the COVID-19 pandemic. *Social science &*
794 *medicine*, 2020. 266: p. 113348.
- 795 59. Larotonda, A. and K.A. Mason, New life, new feelings of loss: journaling new
796 motherhood during Covid-19. *SSM-Mental Health*, 2022. 2: p. 100120.
- 797 60. Doyle, F.L. and L. Klein, Postnatal depression risk factors: an overview of reviews
798 to inform COVID-19 research, clinical, and policy priorities. *Frontiers in Global*
799 *Women's Health*, 2020. 1: p. 577273.
- 800 61. Goldstein, E., et al., Latent class analysis of health, social, and behavioral profiles
801 associated with psychological distress among pregnant and postpartum women
802 during the COVID-19 pandemic in the United States. *Birth*, 2022.
- 803 62. Hildersley, R., et al., Changes in the identification and management of mental
804 health and domestic abuse among pregnant women during the COVID-19
805 lockdown: regression discontinuity study. *BJPsych open*, 2022. 8(4): p. e96.
- 806 63. Liu, C.H., et al., Unexpected changes in birth experiences during the COVID-19
807 pandemic: Implications for maternal mental health. *Archives of gynecology and*
808 *obstetrics*, 2021: p. 1-11.
- 809 64. Shuman, C.J., et al., "Mourning the experience of what should have been":
810 experiences of peripartum women during the COVID-19 pandemic. *Maternal and*
811 *child health journal*, 2022: p. 1-8.
- 812 65. Hendrix, C.L., et al., Geotemporal analysis of perinatal care changes and maternal
813 mental health: an example from the COVID-19 pandemic. *Archives of Women's*
814 *Mental Health*, 2022. 25(5): p. 943-956.

- 815 66. Zhang, C.J.P., et al., Psychobehavioral responses, post-traumatic stress and
816 depression in pregnancy during the early phase of COVID-19 Outbreak. *Psychiatric*
817 *research and clinical practice*, 2021. 3(1): p. 46-54.
- 818 67. Zhang, Y. and Z.F. Ma, Psychological responses and lifestyle changes among
819 pregnant women with respect to the early stages of COVID-19 pandemic.
820 *International Journal of Social Psychiatry*, 2021. 67(4): p. 344-350.
- 821 68. Wolfe-Sherrie, E.J., et al., "Hey child, why were you born when the world is almost
822 over?": An analysis of first-time mothers' postpartum experiences during the early
823 stages of the COVID-19 pandemic in Coatepec, Veracruz, Mexico. *Maternal and*
824 *Child Health Journal*, 2022. 26(8): p. 1732-1740.
- 825 69. An, R., et al., A survey of postpartum depression and health care needs among
826 Chinese postpartum women during the pandemic of COVID-19. *Archives of*
827 *psychiatric nursing*, 2021. 35(2): p. 172-177.
- 828 70. Motrico Martínez, E., et al., The impact of the COVID-19 pandemic on perinatal
829 depression and anxiety: a large cross-sectional study in Spain. *Psicothema*, 2022.
- 830 71. Mayhew, K. and P. Anand, COVID-19 and the UK labour market. *Oxford Review of*
831 *Economic Policy*, 2020. 36(Supplement_1): p. S215-S224.
- 832 72. Chen, Q., et al., Prevalence and risk factors associated with postpartum
833 depression during the COVID-19 pandemic: a literature review and meta-analysis.
834 *International journal of environmental research and public health*, 2022. 19(4): p.
835 2219.
- 836 73. Wilson, C.A., et al., Challenges and opportunities of the COVID-19 pandemic for
837 perinatal mental health care: a mixed-methods study of mental health care staff.
838 *Archives of Women's Mental Health*, 2021. 24(5): p. 749-757.

- 839 74. Ahmad, M. and L. Vismara, The psychological impact of COVID-19 pandemic on
840 women's mental health during pregnancy: A rapid evidence review. International
841 Journal of Environmental Research and Public Health, 2021. 18(13): p. 7112.
- 842 75. Lobel, M., et al., Common model of stress, anxiety, and depressive symptoms in
843 pregnant women from seven high-income Western countries at the COVID-19
844 pandemic onset. Social Science & Medicine, 2022. 315: p. 115499.
- 845 76. Kakaraparthi, V.N., et al., Anxiety, depression, worry, and stress-related
846 perceptions among antenatal women during the COVID-19 pandemic: Single
847 group repeated measures design. Indian Journal of Psychiatry, 2022. 64(1): p. 64.
- 848 77. Xu, K., et al., Mental health among pregnant women under public health
849 interventions during COVID-19 outbreak in Wuhan, China. Psychiatry research,
850 2021. 301: p. 113977.
- 851 78. Liu, C.H., C. Erdei, and L. Mittal, Risk factors for depression, anxiety, and PTSD
852 symptoms in perinatal women during the COVID-19 Pandemic. Psychiatry
853 research, 2021. 295: p. 113552.
- 854 79. Andersen, K. and A. Reeves, The cost of living crisis is harming mental health,
855 partly because of previous cuts to social security. 2022, British Medical Journal
856 Publishing Group.
- 857 80. Pannucci, C.J. and E.G. Wilkins, Identifying and avoiding bias in research. Plastic
858 and reconstructive surgery, 2010. 126(2): p. 619.
- 859 81. Drucker, A.M., P. Fleming, and A.-W. Chan, Research techniques made simple:
860 assessing risk of bias in systematic reviews. Journal of Investigative Dermatology,
861 2016. 136(11): p. e109-e114.
- 862

863

864

865 [Supplementary data](#)

866 Supplementary Data 1: PubMed database

867 Supplementary Checklist 2: CASP Qualitative checklist

868 Supplementary File 3: Interview guide

869 Supplementary File 4: Ethics approval forms

870 Supplementary File 5: Journal formatting guidelines

871

872

873

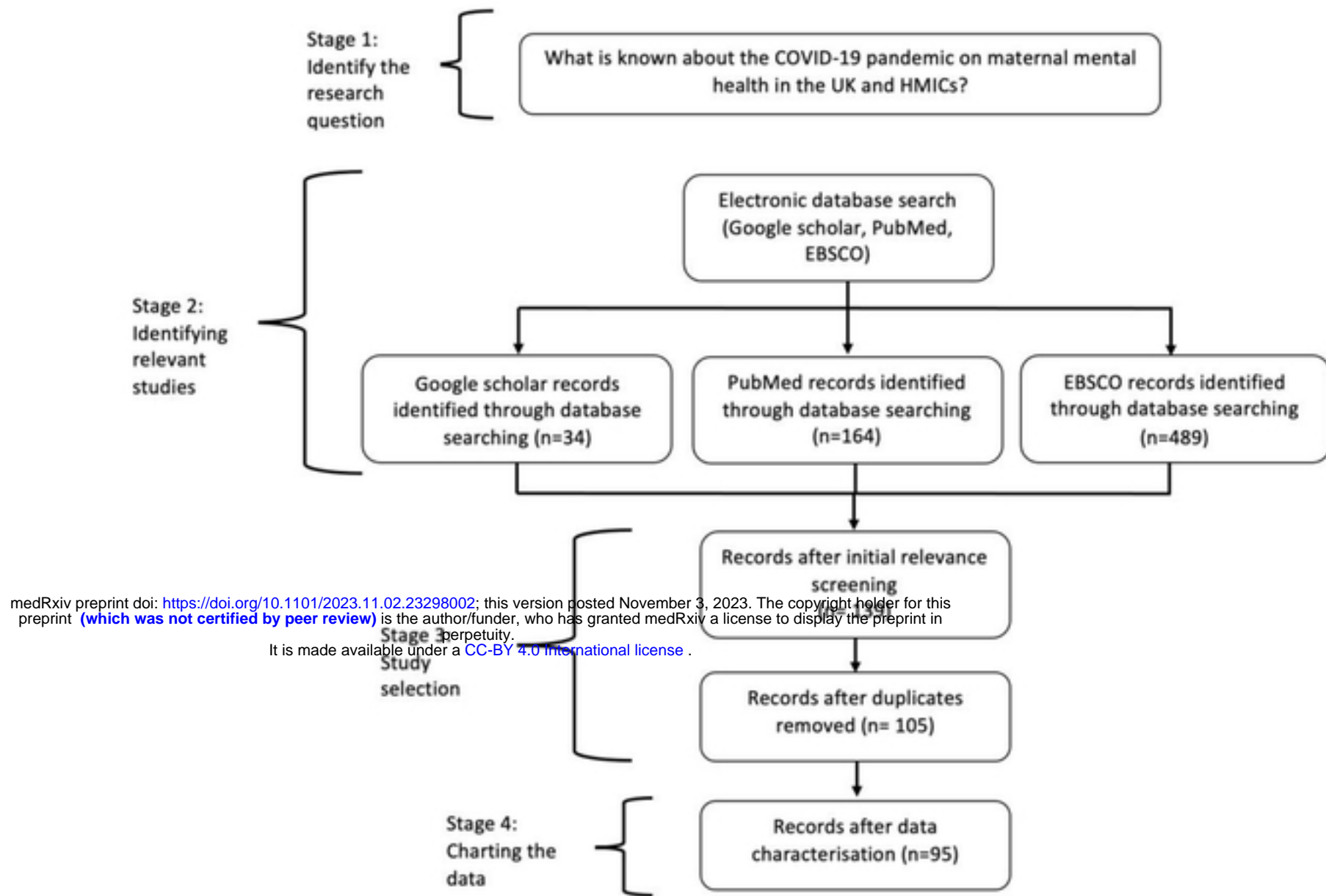


Figure 1