

Prevalence of TEM and SHV Genes in *Klebsiella pneumoniae* isolated from different Clinical specimens in Khartoum, Sudan

Saad A. S Hussein ⁽¹⁾ Mutassim A.M. Salih ⁽¹⁾ Hind M.E Adlan ⁽¹⁾ and Abualgasim E. Abdalla ⁽²⁾*

1. Department of Medical Microbiology, Faculty of Higher education, Medical Laboratory Sciences, Sudan international university, Alazhary, Khartoum,Sudan.
2. Department of Medical Microbiology, Faculty of Medical Laboratory Sciences, Omdurman Islamic University, Omdurman, Khartoum State, Sudan. 2.. Department of Clinical Laboratory Sciences, College of Medical Applied Sciences, Jouf University, Aljouf, SKAKA..

*First Authors:

Saad A.S Hussein, Saadhussein50@gmail.com

Mutassim A.M Salih Mutassimmicro_342@gmail.com

Hend M.E Adlan hendmahgoub001@gmail.com

*Second author:

Dr. Abualgasim Elgaili Abdalla PhD Email: gasimmicro@gmail.com

Abstract:

Objective:

The aim of this study is to determine the prevalence of ESBL producing *Klebsiella pneumoniae* isolated from different clinical specimens gathered from different clinics in Khartoum State.

Settings and Design:

This is a descriptive cross-sectional study conducted in Khartoum State during a period from February to May 2018.

Methods and Materials:

Klebsiella pneumoniae isolated from patients attending to health-care settings with different infections, which was re-identified by conventional methods and screened

for ESBL production by modified Kirby-Bauer's method. The TEM and SHV genes were detected by PCR.

Results:

Out of 100 *K. pneumoniae* isolates, 85% (85/100) were ESBL producing strains. The highest prevalence of ESBL production was in blood 100% (6/6) as well as stool 100% (4/4) followed by sputum 91% (21/23), wound 85% (12/14) and urine 82%(40\49) samples, while the lowest was noted in CSF 50% (2/4). The isolated *K. pneumoniae* showed high resistance to Ceftazidime 85% followed by Cefotaxime and Cefpodoxime 80% for each and 73% for Aztreonam. Furthermore, we found that 88% of isolates were resistant to Colistin and 33% were resistant to Meropenem. TEM and SHV genes were detected in 9.4% (8/85) and 1.2% (1/85) of ESBL producing strains, respectively. However, SHV was also detected in 6.7% (1/15) of non-ESBL-producing *K. pneumoniae*.

Conclusions:

A high prevalence of ESBL-producing *K. pneumoniae* was detected in this study Which is 85%. TEM and SHV genes were found in some strains of ESBL producing *K. pneumoniae*. The findings of this study alarm the physicians to take ESBL producing strains of *K. pneumoniae* under consideration before making treatment decisions.

KeyWords: Extended-spectrum B-lactamases; SHV; TEM; *K. pneumoniae*.

Introduction:

Klebsiella pneumoniae causes a wide range of hospital acquired infections, including pneumonia, urinary tract infections, septicemia, meningitis and soft tissue infections (1, 2). It comprised roughly 3-7% of all nosocomial bacterial infections (3). *K. pneumoniae* infections used to be treated promptly till the emergence of Extended-spectrum beta-lactamases (ESBL), which are enzymes that can hydrolyze broad-spectrum beta-lactam antibiotics (4). Parentally administered cephalosporins (cefotaxime, ceftazidime, ceftriaxone, and others) and a monobactam (aztreonam) with oxyimino side chains, mainly represented by gram-negative bacteria such as

Klebsiella pneumoniae, *Escherichia coli*, *Salmonella* spp., *Proteus* spp., and related organisms (4), this is considered the main mechanism by which *K. pneumoniae* can resist the action of plethora of antibiotics (5). In Sudan the prevalence of ESBL producing *K. pneumoniae* was reported in 53% of strains isolated from urine specimens (6). Likewise, study in Zambia reported that a prevalence of ESBL was 52% (7). ESBLs are encoded by TEM and SHV genes which are harboring in plasmids (8, 9). The TEM was first reported in *E. coli* isolated from a patient named Temoniera in Greece, while SHV is referring to sulfhydryl variable active site (8). The prevalence of both genes among *K. pneumoniae* has been reported globally (10, 11, 12, 13). SHV was found in 67.1% (49/73) and TEM gene was only found in 16.4% of *K. pneumoniae* isolated from 7 European countries (14). Moreover, in Iran the frequency of SHV and TEM among the ESBLs producing isolates was 14.4% and 20.6%, respectively (15). Likewise, study conducted in India documented 67.3% of isolated *K. pneumoniae* have both SHV and TEM genes (16). Nonetheless, a study conducted in Sudan investigating the presence of ESBL in urine samples and the genes responsible for it, they detected SHV gene in 17.6% (2/68) and TEM gene in 16.2% (11/68) (17). Nevertheless, the prevalence of ESBL-producing *K. pneumoniae* or genes encoding ESBL in Sudan remains elusive. Therefore, the present study aimed to investigate the prevalence of ESBL producing *K. pneumoniae* and genes encoding ESBL, including TEM and SHV in strains isolated from various clinical specimens in Khartoum State.

Materials and Methods:

Specimen collection and Isolation

This study included 100 non-duplicate isolates of *K. pneumoniae* from various clinical samples which were obtained from different hospitals in Khartoum State, namely, Fedail's Hospital, Royal-Care Hospital, Albraha Hospital, Sharg-Elneil Hospital and Medical Military Hospital during a period from February to May 2018. The isolated organisms were identified by using conventional methods (colony morphology, Gram stain, oxidase test, citrate utilization test, motility test, urease

test, indole test and sugars fermentation tests.

ESBL phenotype detection:

This was studied by Kirby-Bauer disc diffusion method as per guidelines from Clinical and Laboratory Standards Institute (CLSI) (18). Briefly, to detect ESBL producing bacterial strains, 30µg Ceftriaxone, 30µg Cefotaxime, 30µg Aztreonam, 10µg Ceftazidime and 10µg Cefpodoxime (Bioanalyse, Turkey) were placed on Mueller-Hinton plates that had been inoculated with a *K. pneumoniae* isolate at density equivalent to 0.5% MacFarland standard turbidity. Additionally, two antibiotics were incorporated such 10µg Meropenem and 50µg Colistin (HiMedia, India) as treatment options. Plates were incubated overnight at 37 °C. Interpretation of the diameters of zones of inhibition was as described in [Table 1].

DNA extraction and PCR:

Genomic DNA was extracted from *K. pneumoniae* by phenol chloroform method as described previously (19). The purified DNA was preserved in TB EDTA at -20 °C till processing (20). TEM gene in about 861bp was amplified by using specific primers as follows; forward primer 5'-CATTTCCGTGTGCGCCCTTATTC-3', reverse primer 5'-CGTTCATCCATAGTTGCCTGA-3'. Specific primers for amplification of 471bp of the SHV gene included; forward primer 5'-AGCCGCTTGAGCAAATTAAAC-3', reverse primer 5'-ATCCCGCAGATAAATCACCAC - 3'. The PCR mixture was prepared by adding 1µl from each primer (forward and reverse), 3µl of sterile dH₂O, 5µl DNA sample to the 2µl of MasterMix (1.5 mM MgCl₂, 200 µM each dNTP and 2-5 u Taq DNA polymerase) (Solis BioDyne, Estonia). Next, PCR mixtures were placed on thermocycler, which was optimized as followed at 95 °C for 5mins , annealing temperature for TEM was set at 59°C and for, SHV at 56.7 °C for 30sec, extension at 72 °C for 1min, final extension at 72°C for 10min. The PCR products were examined by gel electrophoresis as mentioned previously (21). [Figure 2].

Results:

A total of 100 *K. pneumoniae* strains were isolated from different clinical specimens, including urine (n=49), sputum (n=23), wound (n=14), Blood (n = 6), CSF (n = 4) and Stool samples (n = 4).

This study revealed that the organisms were highly resistant to Colistin 88% and Ceftazidime 85% followed by Cefotaxime and Cefpodoxime accounting (80%), 74% were resistant to Ceftriaxone and 73% were resistant to Aztreonam, a lower resistance was observed for Meropenem 33%. [Figure 1].

Overall, ESBL producing strains were found in 85% (85/100) of various clinical specimens. The highest was in blood 100% (6/6) as well as stool 100% (4/4) followed by sputum 91% (21/23), wound 85% (12/14) and urine 82%(40\49) samples, while the lowest was noted in CSF 50% (2/4) [Table 2]. TEM gene was detected in 9.4% (8/85) of ESBL positive isolates. While SHV gene was found in 1.2% (1/85) of ESBL producing strains and in 6.7% (1/15) of ESBL-negative strains [Table 3].

[Table 1]: The interpretation of the diameters of zones according to CLSI chart.

Antimicrobials	Sensitive (equal or more than)	Resistant (equal or less than)
Aztreonam 30µg	21	17
Cefpodoxime 10µg	21	17
Cefotaxime 30µg	26	22
Ceftriaxone 30µg	23	19
Ceftazidime 10µg	21	17
Meropenem 10µg	23	19
Colistin 50µg	15	15

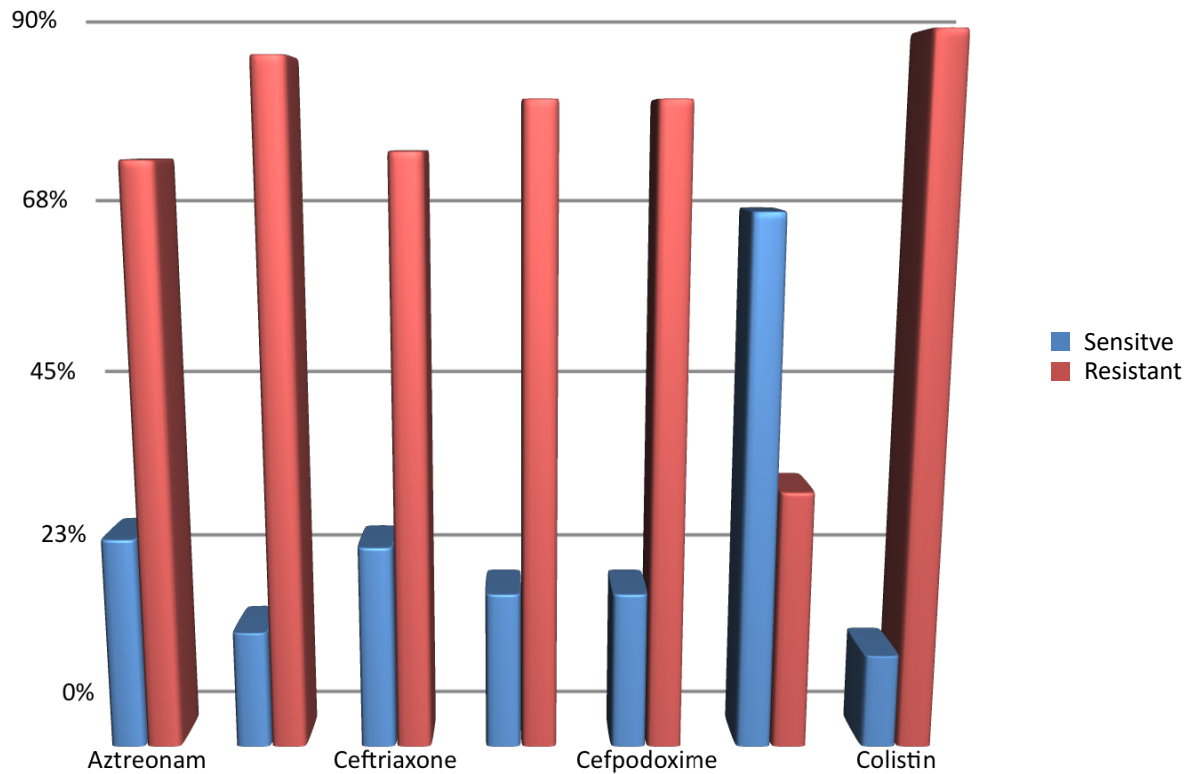


Figure 1. Antibiotic resistance patterns of *K. pneumoniae*.

Table 2: Distribution of ESBL among different specimens.

Type of specimen	ESBL	
	Positive	Negative
Urine	40	9
Sputum	21	2
wound swab	12	2
Stool	4	0
CSF	2	2
Blood	6	0

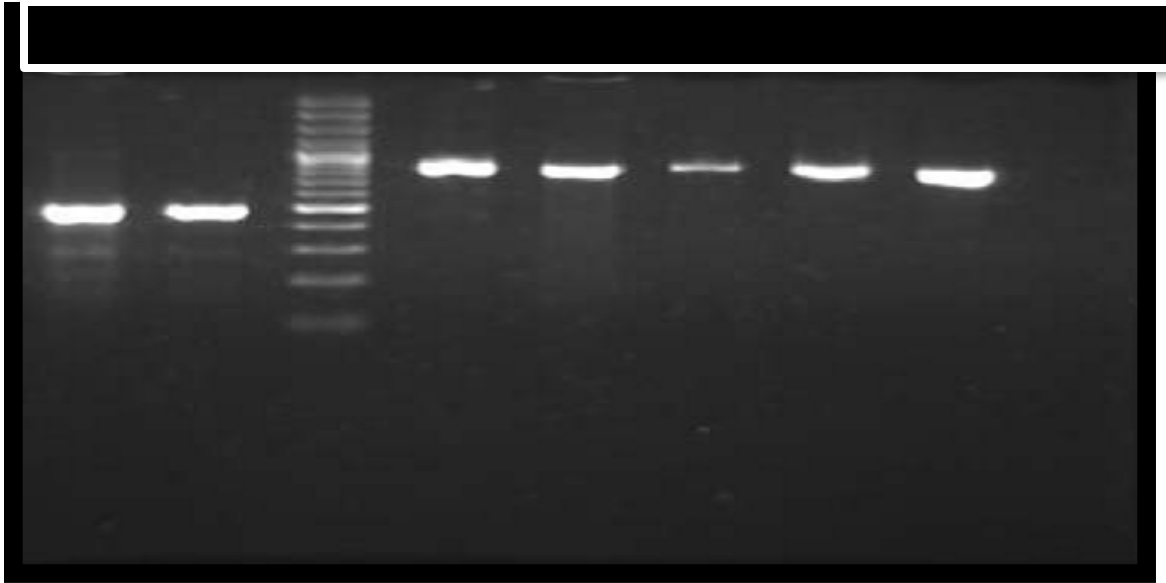


Figure 2: The PCR amplification of SHV and TEM genes: Lane number (1) showed positive SHV and Lane (2) is Control positive with a 471bp fragment of SHV gene .and Lane 3 is the 1500bp of DNA Ladder. Lane number 4 is Control positive showing a 861bp fragment of TEM gene. Lane numbers 5, 6, 7 and 8 show positive TEM gene.

Table 3: the distribution of SHV and TEM among both ESBL and non-ESBL.

Targeted genes		ESBL	
		Positive	Negative
SHV	Positive	1	1
	Negative	0	0
TEM	Positive	8	0
	Negative	77	0

Discussion:

Resistance to beta-lactam antibiotics of Gram negative bacteria isolated from clinical samples has been increased worldwide (22). The aim of this study was to investigate the prevalence of ESBL producing *K. pneumoniae* and distribution of ESBL-encoding genes, mainly TEM and SHV genes among clinical isolates. The present study showed that the prevalence of ESBL producing *K. pneumoniae* was 85%. This finding was higher than that all previously reported results in Sudan (59.6%) (17), India (44.4%) (23) and Taiwan 29.8% (24), Thailand (64%) (25), Korea (22.5) (26), Pakistan (36% (27) and Iran 52% (28). We suggest that the difference in the prevalence of ESBL is due to the un-uniformity of specimens when comparing with previous studies.

From a molecular prospective view our study marked a superiority of TEM gene to SHV (9.4% to 1.2%, respectively) in ESBL positive isolates. This was similar finding documented in Iran where TEM gene to SHV gene was (46.4% to 11.2%, respectively) (29). Unlike, a number of studies conducted in different countries, Namely, Sudan 17.6% SHV and 16.2% for TEM (17)., Saudi Arabia; 89.1% SHV and 70.9% TEM (30) and Turkey; 74.3% SHV and 52.7% TEM, (31). Interestingly, SHV gene was also detected in 6.7% of non-ESBL producing *K. pneumoniae*. This finding was not novel because it was reported in studies carried out in Saudi Arabia (30) and Switzerland (32). However, the variation in findings is thought to be due to; other mechanisms by which resistance evolves, other genes encoding for ESBL-production or mutations in ESBL-genes, such as carrying the gene encoding for ESBL-production but lacking the ability to translate it in order to give the functioning phenotype. . Furthermore, our study also detected a high prevalence of Meropenem resistance (33%) which is by far higher than the figures reported in a study in Canadian hospitals 24.1% (33). Besides, a substantial resistance was observed to Colistin (88%) almost similar to a study conducted in Italy where 58 colistin-resistant *K. pneumoniae* isolates were recovered (34).


Conclusion

This study concludes that the prevalence of ESBLs producing *K. pneumoniae* was high in various clinical specimens. TEM and SHV genes were existed in certain ESBLs producing *K. pneumoniae*. Therefore, in-depth molecular studies are required to understand the resistance mechanisms of ESBLs producing *K. pneumoniae*.

Ethics

This study was approved by the Medical Specialization Ethics Review Board, Sudan.

References

1. Podschun R, Ullmann U (1998). "Klebsiella spp. as nosocomial pathogens: epidemiology, taxonomy, typing methods, and pathogenicity factors". *Clin Microbiol Rev.* 11 (4): 589–603. PMC 88898  PMID 9767057.
2. Nordmann P, Cuzon G, Naas T. The real threat of *Klebsiella pneumoniae* carbapenemase-producing bacteria. *The Lancet infectious diseases.* 2009 Apr 30;9(4):228-36.
3. Won SY, Munoz-Price LS, Lolans K, Hota B, Weinstein RA, Hayden MK. Emergence and Rapid Regional Spread of *Klebsiella pneumoniae* Carbapenemase-Producing Enterobacteriaceae. *Clin Infect Dis.* 2011 Sep. 53(6):532-540.
4. Jacoby GA. Extended-spectrum β -lactamases and other enzymes providing resistance to oxyimino- β -lactams. *Infectious Disease Clinics.* 1997 Dec 1;11(4):875-87.
5. Livermore DM. Beta-lactamases in laboratory and clinical resistance. *Clin Microbiol Rev* 1995; 8:557-584.
6. Mekki AH, Hassan AN, Elsayed DE. Extended spectrum beta lactamases among multi drug resistant *Escherichia coli* and *Klebsiella* species causing urinary tract

infections in Khartoum. African Journal of Bacteriology Research. 2010 Aug 23;2(3):18-21.

7. Nagelkerke MM, Sikwewa K, Makowa D, Vries I, Chisi S, Dorigo-Zetsma JW. Prevalence of antimicrobial drug resistant bacteria carried by in-and outpatients attending a secondary care hospital in Zambia. BMC research notes. 2017 Dec;10(1):378.

8. Behrooz A, Rahbar M, Vand Yousefi J. Frequency of extended spectrum beta-lactamase (ESBLs) producing *Escherichia coli* and *Klebsiella pneumoniae* isolated from urine in an Iranian 1000-bed tertiary care hospital. Afr J Microbiol Res 2010; 4:881-884.

9. Ramazanzadeh R, Farhadifar F, Mansouri M. Etiology and antibiotic resistance pattern of community-acquired extended-spectrum beta-lactamas-producing gram negative isolates in Sanandaj. Res J Med Sci 2010; 4:243-247.

10. Bradford PA. Extended spectrum beta-lactamases in the 21st century: characterization, epidemiology and the detection of this important resistance threat. Clin Microbiol Rev 2001; 14:933-951.

11. Kim YK, Pai H, Lee HJ, Park SE, Choi EH, Kim J, *et al.* Bloodstream infections by extended-spectrum β - lactamase-producing *Escherichia coli* and *Klebsiella pneumoniae* in children: epidemiology and clinical outcome. Antimicrob Agents Chemother 2002; 46:1481-1491.

12. Kalamatizadeh E. Determination of extended-spectrum beta-lactamases bacteria in *Escherichia coli* and *Klebsiella pneumoniae*. Mashhad: Mashhad University of Medical Sciences; 2008.

13. Hernández JR, Martínez-Martínez L, Canto'n R, Coque TM, Pascual A. Nationwide study of escherichia coli and *Klebsiella pneumoniae* producing extended-spectrum -lactamases in Spain. *Antimicrob Agents Chemother* 2005;49:2122-2125.
14. Paterson DL, Hujer KM, Hujer AM, Yeiser B, Bonomo MD, Rice LB, Bonomo RA. Extended-spectrum β -lactamases in *Klebsiella pneumoniae* bloodstream isolates from seven countries: dominance and widespread prevalence of SHV-and CTX-M-type β -lactamases. *Antimicrobial agents and chemotherapy*. 2003 Nov 1;47(11):3554-60.
15. Zaniani FR, Meshkat Z, Nasab MN, Khaje-Karamadini M, Ghazvini K, Rezaee A, Esmaily H, Nabavinia MS, Hoseini MD. The prevalence of TEM and SHV genes among extended-spectrum beta-lactamases producing *Escherichia coli* and *Klebsiella pneumoniae*. *Iranian journal of basic medical sciences*. 2012 Jan;15(1):654
16. Lal P, Kapil A, Das BK, Sood S. Occurrence of TEM & SHV gene in extended spectrum [beta]-lactamases (ESBLs) producing *Klebsiella* sp. isolated from a tertiary care hospital. *Indian Journal of Medical Research*. 2007 Feb 1;125(2):173.
17. Ahmed OB, Omar AO, Asghar AH, Elhassan MM, Al-Munawwarah AM, Arabia S. Prevalence of TEM, SHV and CTX-M genes in *Escherichia coli* and *Klebsiella* spp Urinary Isolates from Sudan with confirmed ESBL phenotype. *Life Sci J*. 2013;10(2):191-5.
18. Schwalbe R, Steele-Moore L, Goodwin AC, editors. *Antimicrobial susceptibility testing protocols*. Crc Press; 2007 May 22.
19. Cheng HR, Jiang N. Extremely rapid extraction of DNA from bacteria and yeasts. *Biotechnology letters*. 2006 Jan 1;28(1):55-9.
20. Copeland JC, inventor; Oxyrase Inc, assignee. Preservation and storage of biological specimens. United States patent application US 15/416,903. 2017 Aug 3.

21. Lee PY, Costumbrado J, Hsu CY, Kim YH. Agarose gel electrophoresis for the separation of DNA fragments. *Journal of visualized experiments: JoVE*. 2012(62).
22. Goossens H. MYSTIC (Meropenem Yearly Susceptibility Test Information Collection) results from Europe: comparison of antibiotic susceptibilities between countries and centre types. *J Antimicrob Chemother* 2000;46:39-52.
23. Varaiya A, Dogra J, Kulkarni M, Bhalekar P. Extended spectrum beta lactamase (ESBL) producing *Escherichia coli* and *Klebsiella pneumoniae* in diabetic foot infection. *Indian J Med Microbiol* 2008; 26:281-282.
24. Yu WL, Chuang YC, Walther-Rasmussen J. Extended spectrum β -lactamases in Taiwan: epidemiology, detection, treatment and infection control. *J Microbiol Immunol Infect* 2006; 39:264-277.
25. Chaikittisuk N, Munsrichoom A. Extended-spectrum β -Lactamase-producing *Escherichia coli* and *Klebsiella pneumoniae* in children at Queen Sirikit National Institute of Child Health. *J Infect Dis Antimicrob Agents* 2007; 24:107-115.
26. Pai H. The characteristics of extended-spectrum β -lactamases in Korean isolates of Enterobacteriaceae. *Yonsei Med J* 1998; 39:514-519.
27. Jabeen K, Zafar A, Hasan R. Frequency and sensitivity pattern of extended-spectrum β -lactamase producing isolates in a tertiary care hospital laboratory of Pakistan. *J Pak Med Assoc* 2005; 55:436-439.
28. Fazly Bazzaz BS, Naderinasab M, Mohamadpoor AH, Farshadzadeh Z, Ahmadi S, Yousefi F. The prevalence of extended-spectrum beta-lactamase-producing *Escherichia coli* and *Klebsiella pneumoniae* among clinical isolates from a general hospital in Iran. *Acta Microbiol Immunol Hung* 2009; 56:89-99.

29. Tawfik AF, Alswailem AM, Shibl AM, Al-Agamy MH. Prevalence and genetic characteristics of TEM, SHV, and CTX-M in clinical *Klebsiella pneumoniae* isolates from Saudi Arabia. *Microbial Drug Resistance*. 2011 Aug 1;17(3):383-8.
30. Tasli H, Bahar IH. Molecular characterization of TEM-and SHV-derived extended-spectrum beta-lactamases in hospital-based Enterobacteriaceae in Turkey. *Japanese journal of infectious diseases*. 2005 Jun 1;58(3):162.
31. Shahcheragh F, Nasiri S, Noveiri H. Detection of extended-spectrum β -lactamases (ESBLs) in *Escherichia coli*. *Iran J Clin Infect Dis* 2009; 4:63-70.
32. Nüesch-Inderbilen MT, Kayser FH, Hächler HE. Survey and molecular genetics of SHV beta-lactamases in Enterobacteriaceae in Switzerland: two novel enzymes, SHV-11 and SHV-12. *Antimicrobial agents and chemotherapy*. 1997 May 1;41(5):943-9.
33. Zhanel GG, DeCorby M, Adam H, Mulvey MR, McCracken M, Lagacé-Wiens P, Nichol KA, Wierzbowski A, Baudry PJ, Taylor F, Karlowsky JA. Prevalence of antimicrobial-resistant pathogens in Canadian hospitals: results of the Canadian Ward Surveillance Study (CANWARD 2008). *Antimicrobial agents and Chemotherapy*. 2010 Nov 1;54(11):4684-93.
34. Mammina C, Bonura C, Di Bernardo F, Aleo A, Fasciana T, Sodano C, Saporito MA, Verde MS, Tetamo R, Palma DM. Ongoing spread of colistin-resistant *Klebsiella pneumoniae* in different wards of an acute general hospital, Italy, June to December 2011. *Eurosurveillance*. 2012 Aug 16;17(33):20248.

It is made available under a [CC-BY 4.0 International license](#) .

A handwritten signature in black ink, appearing to be 'S. W.' or similar, located in the center of the page.

[Table 1]: The interpretation of the diameters of zones according to CLSI chart.

Antimicrobials	Sensitive (equal or more than)	Resistant (equal or less than)
Aztreonam 30µg	21	17
Cefpodoxime 10µg	21	17
Cefotaxime 30µg	26	22
Ceftriaxone 30µg	23	19
Ceftazidime 10µg	21	17
Meropenem 10µg	23	19
Colistin 50µg	15	15

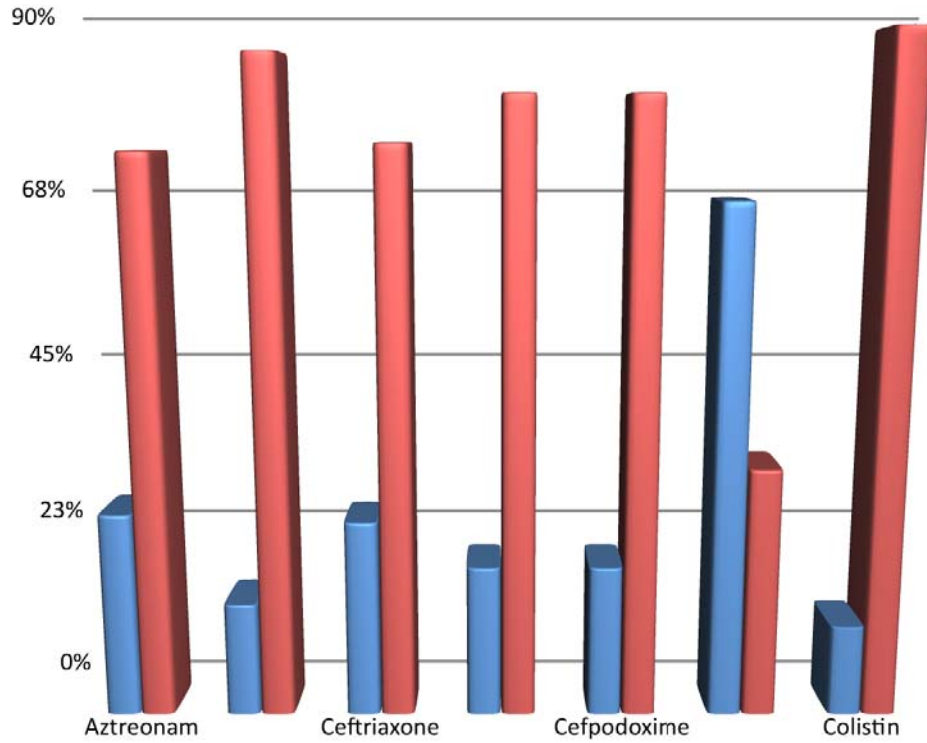


Figure 1.

Antibiotic resistance patterns of *K. pneumoniae*.

Table 2: Distribution of ESBL among different specimens.

Sensitive Resistant

Type of specimen	ESBL	
	Positive	Negative
Urine	40	9
Sputum	21	2
wound swab	12	2
Stool	4	0
CSF	2	2
Blood	6	0

Figure 2: The PCR amplification of SHV and TEM genes: Lane number (1) showed positive SHV and Lane (2) is Control positive with a 471bp fragment of SHV gene .and Lane 3 is the 1500pb of DNA Ladder. Lane number 4 is Control positive showing a 861bp fragment of TEM gene. Lane numbers 5, 6, 7 and 8 show positive TEM gene.

Table 3: the distribution of SHV and TEM among both ESBL and non-ESBL.

Targeted genes		ESBL	
		Positive	Negative
SHV	Positive	1	1
	Negative	0	0
TEM	Positive	8	0
	Negative	77	0

It is made available under a [CC-BY 4.0 International license](#) .

A handwritten signature in black ink, appearing to be 'S. J.', located in the upper center of the page.