

1 **Alzheimer's Disease cerebrospinal fluid Biomarkers and kidney function in normal and**  
2 **cognitively impaired older adults.**

3 Ihab Hajjar, MD<sup>1,2,3</sup> Reem Neal, MD<sup>1</sup>; Zhiyi Yang, PhD<sup>2</sup>, James J. Lah, MD, PhD<sup>2</sup>;

4

5 <sup>1</sup>**Department of Neurology, University of Texas Southwestern Medical Center, Dallas, Texas, USA.**

6 <sup>2</sup>**Department of Neurology, Emory University School of Medicine, Atlanta, Georgia, USA.**

7 <sup>3</sup>**Department of Medicine, Emory University School of Medicine, Atlanta, Georgia, USA.**

8

9 **Word count:** 1985

10

11 **Category:** Original Investigation

12

13 **Corresponding Author:** Ihab Hajjar, MD, Department of Neurology, University of Texas Southwestern  
14 Medical Center, Dallas, TX 75390-8806, USA.

15 Email: [Ihab.Hajjar@UTSouthwestern.edu](mailto:Ihab.Hajjar@UTSouthwestern.edu) Tel: [214/645-9533](tel:2146459533)

16

17 **KEY POINTS:**

18 **Question:** Are Cerebrospinal Fluid (CSF)AD-biomarker measurements impacted by kidney function?

19 **Findings:** In this analysis of data from 973 individuals who had both cerebrospinal fluid (CSF) AD-  
20 biomarkers (A $\beta$ 42, Tau, and pTau181) and kidney function measurements, there were significant  
21 associations between estimated glomerular filtration rate (eGFR) and measures of CSF AD-biomarkers.  
22 These associations were more pronounced in those with cognitive impairment.

23 **Meaning:** Kidney function may have a significant impact on AD-biomarker measurements in the CSF,  
24 especially in those in the early symptomatic stages of AD.

25

26 **Abstract:**

27 **Importance:** Recent Alzheimer's disease (AD) clinical trials have used Cerebrospinal fluid (CSF)

28 biomarker levels for screening and enrollment. Preliminary evidence suggests Alzheimer's Disease (AD)

29 risk may be related to impaired renal function but the association of variation in levels of commonly used

30 AD biomarkers with kidney function are unknown.

31 **Objective:** To investigate the association between estimated glomerular filtration rate (eGFR), CSF levels

32 of AD biomarkers: amyloid beta<sub>1-42</sub> (Aβ<sub>42</sub>), Tau or phosphorylated Tau<sub>181</sub> (pTau).

33 **Design, Setting, and Participants:** We conducted an analysis using data from participants enrolled in

34 two research protocols at the Goizueta Alzheimer's Disease Research Center that had simultaneous

35 measurements of serum creatinine at the time of their Cerebrospinal fluid (CSF) collection (N=973). The

36 participants had a mean age of 66.52 years, 23.33% were African American, and 63% were women, with

37 42.46% having mild cognitive impairment (MCI). The estimated glomerular filtration rate (eGFR) was

38 obtained from chronic kidney disease Epidemiology Collaboration. All participants had similar CSF

39 collection procedures. Aβ<sub>42</sub>, Tau or pTau were measured on the Luminex ALZBIO platform. General

40 linear models and individual data were used to assess relationships between biomarkers and eGFR.

41 **Results:** Lower eGFR was associated with lower Aβ<sub>42</sub>/Tau ratio (slope= 0.033 units, p<0.0001) and

42 Aβ<sub>42</sub> (slope=0.75, p=0.002) and higher Tau (slope= -0.39, p<0.0001) and pTau (slope= -0.13, p=0.0002).

43 Although these associations remained significant after adjusting for cognitive status, we observed

44 interactions between MCI and eGFR. This interaction revealed that the impact of eGFR on AD biomarker

45 levels was more robust in individuals with cognitive impairment (interaction MCI\*eGFR p-values were

46 0.005 for Ab<sub>42</sub>, 0.04 for tau and pTau, and 0.05 for the ratio).

47 **Conclusion:** We found a significant association between eGFR with CSF AD-biomarkers that may differ

48 by cognitive status. This suggests that kidney function should be considered both in the context of

49 interpreting AD biomarkers as well as exploring potential systemic factors that may increase risk of AD.

50 Future longitudinal studies need to further explore the impact of kidney function on the pathogenesis of

51 AD and related Biomarkers.

52

## 53 **Introduction:**

54 Alzheimer's Disease (AD) biomarkers such as amyloid beta1–42 (A $\beta$ 42), Tau, phosphorylated tau (pTau),  
55 and more specifically the A $\beta$ 42/Tau ratio play a crucial role in the diagnosis of Alzheimer's Disease.<sup>1</sup>

56 These biomarkers are also commonly used in clinical trials for screening and enrollment and the use of a  
57 combination of these biomarkers has been found to yield improved case identifications.<sup>2-5</sup> The variation in

58 levels of these AD biomarkers by demographics and comorbidities is still being explored with recent

59 evidence suggesting that consideration of these variations is important.<sup>6-8</sup> Kidney function may impact

60 levels of disease markers, especially on plasma protein-based markers.<sup>9</sup> Whether there is a similar impact

61 on AD-biomarkers commonly measured in cerebrospinal fluid (CSF) remains unclear. Preliminary

62 evidence has suggested that impaired kidney function is associated with cognitive impairment based on

63 neuropsychological assessments.<sup>10-12</sup> A recent analysis of the Whitehall II prospective study suggested a

64 connection between a lower estimated glomerular filtration rate (eGFR) and the risk of clinical dementia

65 diagnosis.<sup>13</sup> It has also been suggested that the risk of Alzheimer's disease is related to impaired renal

66 function and its impact on levels of AD biomarkers in the plasma.<sup>14,15</sup> Since the CSF is a highly controlled

67 microenvironment, studying the association of kidney function with CSF biomarkers offers great insight

68 into the kidney-brain axis.<sup>12,16</sup>

69 In this study, we aimed to investigate the association between estimated glomerular filtration rate (eGFR),

70 as a measure of kidney function, and the levels of AD biomarkers in the CSF—specifically, the A $\beta$ 42/Tau

71 ratio and individual other individual AD biomarkers: Amyloid beta 1-42 (A $\beta$ 42), Tau, and phosphorylated

72 Tau181 (pTau)—in individuals with and without cognitive impairment. By analyzing the data from

73 participants enrolled in two research protocols, we sought to determine whether eGFR is associated with

74 alterations in the levels of AD biomarkers in the CSF. we also explored potential interactions between

75 kidney function, AD biomarker levels, and mild cognitive impairment (MCI) – a common precursor to

76 AD, which might provide critical insights into the impact of renal health on cognitive decline especially

77 in individuals in the early symptomatic stages of AD.

78 **Methods:**

79 We analyzed data from participants in studies conducted within the Goizueta Alzheimer’s Disease  
80 Research Center (ADRC; N= 973, mean age=66.5, 52% mild cognitive impairment (MCI), 31% AA, 62%  
81 women) who had simultaneous measurement of their serum creatinine during their visit for CSF  
82 collection. Participants were enrolled in two observational protocols that were approved by the Emory  
83 IRB (Institutional Review Board) and each participant signed a written informed consent. All participants  
84 underwent identical lumbar puncture procedures, CSF analysis, and kidney function measurements:  
85 Brain Stress Hypertension and Aging program (B-SHARP: n= 375 and ADRC Clinical Research in  
86 Neurology (CRIN): n=598). B-SHARP sample participants were identified either through a referral from  
87 the Goizueta ADRC or through strategic community partnerships with grass-roots health education  
88 organizations, health fairs, advertisements, and mail-out announcements. An appropriate study informant,  
89 defined as an individual who has regular contact with the participant for at least once a week (in person or  
90 by telephone), was also identified. The potential study participants attended a screening visit, during  
91 which they underwent cognitive testing. A study physician performed a clinical evaluation and lumbar  
92 punctures (LP). CRIN is an ADRC-affiliated research protocol that is offered to individuals undergoing  
93 lumbar puncture as part of their evaluation at the Emory Cognitive Neurology clinic. LP procedures and  
94 preanalytical protocols are identical in all our ADRC-affiliated research and clinical protocols.  
95 Demographics (age, sex, race, education), anthropometrics (weight and height), medical diagnosis, and  
96 income levels were collected at baseline by interview. Following a fast of no less than 6 hours, CSF  
97 samples were collected via lumbar puncture using 24G Sprotte atraumatic spinal needles. Samples were  
98 collected in sterile polypropylene tubes, separated into 0.5cc aliquots, and stored at  $-80^{\circ}\text{C}$ . CSF  
99 Biomarkers, A $\beta$ 1-42, tau, and Ptau181, were measured using the multiplex xMAP Luminex platform  
100 (Luminex Corp, Austin, TX) with Innogenetics (INNO-BIA AlzBio3; Ghent, Belgium; for research use-  
101 only reagents) immunoassay kit-based reagents. Estimated GFR was calculated using the Chronic  
102 Kidney Disease Epidemiology Collaboration (CKD-EPI) equation.<sup>17</sup> CKD-EPI is the most widely used

103 method to calculate eGFR which is calculated using this equation:  $41 \times \min(\text{Scr}/\kappa, 1)^\alpha \times \max(\text{Scr}/\kappa, 1) -$   
104  $1.209 \times 0.993\text{Age} \times 1.018$  [if female]  $\times 1.159$  [if African American] ( where Scr is serum creatinine in  
105  $\mu\text{mol/L}$ ,  $\kappa$  is 61.9 for females and 79.6 for males,  $\alpha$  is -0.329 for females and -0.411 for males, min  
106 indicates the minimum of  $\text{Scr}/\kappa$  or 1, and max indicates the maximum of  $\text{Scr}/\kappa$  or 1).

107 **Statistical analysis:** Statistical analysis was performed with SAS statistical software version 9.4 M6. The  
108 statistical significance was defined as  $p < 0.05$ . Although the 2 protocols had identical procedures for the  
109 biomarkers and kidney function, we conducted an individual participant data metanalysis with a General  
110 linear model and “protocol” as the random effect to assess relationships between biomarkers and eGFR  
111 using the combined data.<sup>18</sup> In addition to the eGFR/biomarker measurement analysis, we conducted an  
112 interaction analysis to assess if the associations differed by cognitive status.

## 113 **Results:**

### 114 **Participant Characteristics:**

115 The Study’s sample included 973 participants, consisting of 613 women (63%) and 360 men (37%). The  
116 mean age was 66.52 (SD: 8.83). The participant distribution included 227 African American patients  
117 (23.33%) and 746 Caucasian patients (76.67%). Among the participants, 413 patients (42.45%) were  
118 diagnosed with Mild Cognitive Impairment (MCI). The mean eGFR was 78 (standard deviation: 16.70)  
119 mL/min/1.73 m<sup>2</sup> with no significant difference between participants with Normal Cognition (NC) or  
120 participants with Mild Cognitive Impairment (MCI). As expected, we found that individuals within the  
121 MCI group exhibited a substantially lower average A $\beta$ 42 level, and higher average Tau and pTau levels.  
122 The key characteristics of the study participants are provided in Table 1.

123

### 124 **Association of eGFR with CSF AD-biomarkers in Full sample:**

125 We observed a significant association between eGFR and the A $\beta$ 42/Tau ratio (0.033,  $p < 0.0001$ ). We also  
126 found significant associations between eGFR and all three CSF AD-biomarkers: A $\beta$ 42 (slope per unit  
127 increase: 0.75,  $p = 0.002$ ), Tau (-0.39,  $p < 0.0001$ ), and pTau (-0.13,  $p = 0.0002$ ). The results show that for  
128 every unit increase in eGFR, there is a corresponding change in CSF AD-biomarkers as follows: an  
129 increase in both the A $\beta$ 42/Tau ratio, and A $\beta$ 42 and a decrease in both Tau, and pTau. (Table 2)

130 Furthermore, our analysis showed that each unit increase in eGFR corresponded to an approximate  
131 increase of 0.52 in A $\beta$ 42 levels, however, for Tau and pTau, we found that each unit increase in eGFR  
132 corresponded with a decrease in Tau and pTau levels in the CSF, even after adjusting for MCI status.  
133 (Table 2) Further, individuals within the MCI group exhibited a substantially lower average A $\beta$ 42 level  
134 measuring approximately (-88.88 pg/ml), lower A $\beta$ 42/Tau ratio (-2.85), and higher levels of Tau  
135 (40.51pg/ml), and pTau (17.03 pg/ml) after adjusting for eGFR. (Table S.2)

136

### 137 **The impact of MCI on the association between CSF AD-biomarkers and eGFR:**

138 Our subsequent analysis aimed to explore the potential interaction among CSF AD biomarkers, eGFR,  
139 and MCI. We found a notable difference in the variation of CSF AD biomarkers with eGFR based on  
140 cognitive status, where the variation in AD biomarker levels was significant only in the MCI group.  
141 However, in the NC group the variation with eGFR did not reach statistical significance. (Table 3) This  
142 observation indicates that the impact of eGFR on AD biomarker levels is more pronounced in individuals  
143 with cognitive impairment. (Figure 1)

144 Finally, after adjusting for hypertension and diabetes, which was available only for a subsample (N=375,  
145 50.74% with hypertension and 12.76% with diabetes), the association between the A $\beta$ 42/Tau ratio, Tau,  
146 and pTau, with eGFR remained significant except for A $\beta$ 42. (Table S.3)

147



148 **Discussion:**

149 In our present study of a large cohort of older adults with CSF biomarker quantifications, we found  
150 kidney function was associated with the levels of AD biomarkers in the CSF. Although these associations  
151 remained significant after adjusting for cognitive status, we observed significant interactions between  
152 MCI and eGFR where the impact of this association is more pronounced in individuals with MCI. The  
153 significant association between CSF biomarkers and both eGFR and MCI, even after adjusting for  
154 confounders reinforces the notion from previous studies of a more direct influence of kidney health on  
155 AD-related pathology.<sup>19</sup> Earlier studies have consistently indicated a link between kidney function,  
156 cognitive impairment, and dementia.<sup>10-13</sup> Additionally recent studies have found that the kidneys play a  
157 physiological role in the clearance of A $\beta$  from the blood and brain in both humans and animals,<sup>20,21</sup> as  
158 well as Tau having a physiological role in the kidneys.<sup>22</sup> Furthermore, studies have suggested that A $\beta$   
159 from the periphery might be contributing to AD pathogenesis by increasing the levels of A $\beta$  crossing the  
160 blood brain barrier (BBB) and inducing A $\beta$ -related pathologies in the brain.<sup>23,24</sup> Therefore, given it has  
161 been established that lower A $\beta$ 42 levels in the CSF or plasma are associated with increased amyloid  
162 deposition in the brain by many clinical studies<sup>23,25-29</sup> and the amyloid hypothesis that suggests AD is  
163 due to the imbalance of A $\beta$ ,<sup>30</sup> a possible explanation for our findings is the decline in kidney function  
164 resulted in decreased clearance and therefore accumulation of AD pathology.<sup>31,32</sup> Another possible  
165 explanation is that the decline in kidney function contributed to an increase in production of AD  
166 biomarkers in the brain. In both scenarios, the association of kidney function with AD biomarkers needs  
167 further exploration. It is also worth noting that the associations between kidney function and Tau and  
168 A $\beta$ 42/tau ratio were significant after adjusting for hypertension and diabetes, suggesting that our findings  
169 are independent of common risk factors for kidney function loss. Our finding that adjusting for  
170 hypertension and diabetes renders the A $\beta$ 42-kidney function association not significant may imply that it  
171 is related to kidney disease risk factors. This supports previous studies that demonstrated an association  
172 between increased plasma levels of A $\beta$  and vascular disease in both the brain and the periphery including

173 hypertension, and diabetes.<sup>24</sup> However, it is important to note that this analysis was only conducted on a  
174 subsample and hence need to be interpreted with caution.

175 This is to our knowledge one of the few first large studies that reported the association of kidney function  
176 with CSF AD biomarkers and its interaction with cognitive status. This study highlights the need to  
177 incorporate kidney function in studies of AD risk factors and the need to consider renal health when  
178 interpreting the results of AD biomarkers<sup>33,34</sup> within clinical evaluations and trials particularly during the  
179 early symptomatic stages of AD. This also adds an additional factor to our understanding of the complex  
180 multifactorial processes contributing to AD and its biomarkers.

### 181 **Limitations:**

182 This study has a few limitations that are related to the cross-sectional nature of this analysis. Nevertheless,  
183 the observation of an association between kidney function and AD biomarkers cross-sectionally is  
184 significant. However, considering that the AD biomarkers were measured at a single point, whether  
185 kidney function would influence these measures in a longitudinal study remains an important and  
186 unexplored phenomenon.

### 187 **Future Directions:**

188 It is important that future studies investigate the association with other known comorbidities such as  
189 microvascular dysfunction, vitamin D metabolism, erythropoietin variation, and alterations in the renin-  
190 angiotensin system and their effects on AD biomarker variations. Studying their effects on AD biomarker  
191 variations could offer insights into the mechanisms for increased risk of AD in high-risk populations such  
192 as older adults, African Americans (AA) or those with Diabetes and hypertension.

### 193 **Conclusion:**

194 In conclusion, our study provided insights into the complex association between kidney function, AD  
195 biomarkers, and cognitive impairment. The findings suggest a significant association between kidney

196 function and variation in levels of AD biomarkers in the CSF (A $\beta$ 42, tau, and pTau), which were stronger  
197 in individuals with MCI. This suggests that kidney function should be considered in the context of  
198 interpreting AD biomarkers in clinical evaluations and clinical trials, especially in those in the early  
199 symptomatic stage of AD. Future studies need to further explore the impact of kidney function and other  
200 comorbidities on the interpretation of AD Biomarkers.

## 201 **Acknowledgements:**

202 **Corresponding Author:** Ihab Hajjar, MD, Department of Neurology, University of Texas Southwestern  
203 Medical Center, 5323 Harry Hines Blvd, 4<sup>th</sup> floor, Dallas, TX 75390-8806, USA. Email:  
204 Ihab.Hajjar@UTSouthwestern.edu

205 **Author Contributions:** Dr Hajjar had full access to all of the data in the study and takes responsibility  
206 for the integrity of the data and the accuracy of the data analysis.

207 *Concept and design:* Hajjar.

208 *Acquisition, analysis, or interpretation of data:* Hajjar

209 *Drafting of the manuscript:* Hajjar, Neal, Yang.

210 *Critical revision of the manuscript for important intellectual content:* All authors.

211 *Statistical analysis:* Hajjar, Yang.

212 *Administrative, technical, or material support:* Hajjar

213 **Conflict of Interest Disclosures:** None reported.

214 **Funding/Support:** This study was funded by the National Institute on Aging (NIA)

215 **Role of the Funder/Sponsor:** The funding sources had no role in the design and conduct of the study;  
216 collection, management, analysis, and interpretation of the data; preparation, review, or approval of the  
217 manuscript; and decision to submit the manuscript for publication.

218 **References:**

219

- 220 1. Papaliagkas V, Kalinderi K, Varelzis P, Moraitou D, Papamitsou T, Chatzidimitriou M. CSF  
221 Biomarkers in the Early Diagnosis of Mild Cognitive Impairment and Alzheimer’s Disease. *International*  
222 *Journal of Molecular Sciences*. 2023;24(10):8976.
- 223 2. Bouwman FH, Schoonenboom NS, Verwey NA, et al. CSF biomarker levels in early and late  
224 onset Alzheimer's disease. *Neurobiology of aging*. 2009;30(12):1895-1901.
- 225 3. Hampel H, Teipel SJ, Fuchsberger T, et al. Value of CSF  $\beta$ -amyloid1–42 and tau as predictors of  
226 Alzheimer's disease in patients with mild cognitive impairment. *Molecular psychiatry*. 2004;9(7):705-  
227 710.
- 228 4. Jack Jr C, Bennett D, Blennow K, et al. NIA-AA research framework: toward a biological  
229 definition of Alzheimer’s disease. *Alzheimers Dement* 14 (4): 535–562. 2018.
- 230 5. Mattsson N, Insel PS, Donohue M, et al. Predicting reduction of cerebrospinal fluid  $\beta$ -amyloid 42  
231 in cognitively healthy controls. *Jama neurology*. 2015;72(5):554-560.
- 232 6. Garrett SL, McDaniel D, Obideen M, et al. Racial disparity in cerebrospinal fluid amyloid and tau  
233 biomarkers and associated cutoffs for mild cognitive impairment. *JAMA network open*.  
234 2019;2(12):e1917363-e1917363.
- 235 7. Morris JC, Schindler SE, McCue LM, et al. Assessment of racial disparities in biomarkers for  
236 Alzheimer disease. *JAMA neurology*. 2019;76(3):264-273.
- 237 8. Sundermann EE, Panizzon MS, Chen X, et al. Sex differences in Alzheimer’s-related Tau  
238 biomarkers and a mediating effect of testosterone. *Biology of sex Differences*. 2020;11:1-10.
- 239 9. Yang J, Brody EN, Murthy AC, et al. Impact of kidney function on the blood proteome and on  
240 protein cardiovascular risk biomarkers in patients with stable coronary heart disease. *Journal of the*  
241 *American Heart Association*. 2020;9(15):e016463.

- 242 10. Basit S, Damholt MB, Wohlfahrt J, Boyd HA. Is kidney disease associated with both Alzheimer's  
243 disease and vascular dementia? Epidemiology/Risk and protective factors in MCI and dementia.  
244 *Alzheimer's & Dementia*. 2020;16:e042527.
- 245 11. Xu H, Garcia-Ptacek S, Trevisan M, et al. Kidney function, kidney function decline, and the risk  
246 of dementia in older adults: a registry-based study. *Neurology*. 2021;96(24):e2956-e2965.
- 247 12. Zhang C-Y, He F-F, Su H, Zhang C, Meng X-F. Association between chronic kidney disease and  
248 Alzheimer's disease: An update. *Metabolic Brain Disease*. 2020;35:883-894.
- 249 13. Singh-Manoux A, Oumarou-Ibrahim A, Machado-Fragua MD, et al. Association between kidney  
250 function and incidence of dementia: 10-year follow-up of the Whitehall II cohort study. *Age and ageing*.  
251 2022;51(1):afab259.
- 252 14. Shaw LM, Vanderstichele H, Knapik-Czajka M, et al. Qualification of the analytical and clinical  
253 performance of CSF biomarker analyses in ADNI. *Acta neuropathologica*. 2011;121:597-609.
- 254 15. Sun H-L, Yao X-Q, Lei L, et al. Associations of Blood and Cerebrospinal Fluid A $\beta$  and tau Levels  
255 with Renal Function. *Molecular Neurobiology*. 2023:1-9.
- 256 16. Xie Z, Tong S, Chu X, Feng T, Geng M. Chronic kidney disease and cognitive impairment: The  
257 kidney-brain axis. *Kidney Diseases*. 2022;8(4):275-285.
- 258 17. Levey AS. CKD-EPI (Chronic Kidney Disease Epidemiology Collaboration): a new equation to  
259 estimate glomerular filtration rate. *Ann Intern Med*. 2009;150:604-612.
- 260 18. Sheu C-F, Suzuki S. Meta-analysis using linear mixed models. *Behavior Research Methods*,  
261 *Instruments, & Computers*. 2001;33(2):102-107.
- 262 19. Shi Y, Liu Z, Shen Y, Zhu H. A novel perspective linkage between kidney function and  
263 Alzheimer's disease. *Frontiers in cellular neuroscience*. 2018;12:384.
- 264 20. Ghiso J, Calero M, Matsubara E, et al. Alzheimer's soluble amyloid  $\beta$  is a normal component of  
265 human urine. *FEBS letters*. 1997;408(1):105-108.
- 266 21. Tian D-Y, Cheng Y, Zhuang Z-Q, et al. Physiological clearance of amyloid-beta by the kidney and  
267 its therapeutic potential for Alzheimer's disease. *Molecular Psychiatry*. 2021;26(10):6074-6082.

- 268 22. Vallés-Saiz L, Peinado-Cahuchola R, Ávila J, Hernández F. Microtubule-associated protein tau in  
269 murine kidney: role in podocyte architecture. *Cellular and Molecular Life Sciences*. 2022;79(2):97.
- 270 23. Bu X, Xiang Y, Jin W, et al. Blood-derived amyloid- $\beta$  protein induces Alzheimer's disease  
271 pathologies. *Molecular psychiatry*. 2018;23(9):1948-1956.
- 272 24. Janelidze S, Stomrud E, Palmqvist S, et al. Plasma  $\beta$ -amyloid in Alzheimer's disease and vascular  
273 disease. *Scientific reports*. 2016;6(1):26801.
- 274 25. Grimmer T, Riemenschneider M, Förstl H, et al. Beta amyloid in Alzheimer's disease: increased  
275 deposition in brain is reflected in reduced concentration in cerebrospinal fluid. *Biological psychiatry*.  
276 2009;65(11):927-934.
- 277 26. Mawuenyega KG, Sigurdson W, Ovod V, et al. Decreased clearance of CNS  $\beta$ -amyloid in  
278 Alzheimer's disease. *Science*. 2010;330(6012):1774-1774.
- 279 27. Palmqvist S, Mattsson N, Hansson O, Initiative AsDN. Cerebrospinal fluid analysis detects  
280 cerebral amyloid- $\beta$  accumulation earlier than positron emission tomography. *Brain*. 2016;139(4):1226-  
281 1236.
- 282 28. Strozyk D, Blennow K, White L, Launer L. CSF A $\beta$  42 levels correlate with amyloid-  
283 neuropathology in a population-based autopsy study. *Neurology*. 2003;60(4):652-656.
- 284 29. Tapiola T, Alafuzoff I, Herukka S-K, et al. Cerebrospinal fluid  $\beta$ -amyloid 42 and tau proteins as  
285 biomarkers of Alzheimer-type pathologic changes in the brain. *Archives of neurology*. 2009;66(3):382-  
286 389.
- 287 30. Hardy J, Selkoe DJ. The amyloid hypothesis of Alzheimer's disease: progress and problems on  
288 the road to therapeutics. *science*. 2002;297(5580):353-356.
- 289 31. Kelly DM, Rothwell PM. Disentangling the relationship between chronic kidney disease and  
290 cognitive disorders. *Frontiers in Neurology*. 2022;13:830064.
- 291 32. Wang Y-J, Zhou H-D, Zhou X-F. Clearance of amyloid-beta in Alzheimer's disease: progress,  
292 problems and perspectives. *Drug discovery today*. 2006;11(19-20):931-938.

293 33. Stocker H, Beyer L, Trares K, et al. Association of kidney function with development of  
294 Alzheimer disease and other dementias and dementia-related blood biomarkers. *JAMA Network Open*.  
295 2023;6(1):e2252387-e2252387.

296 34. Syrjanen JA, Campbell MR, Algeciras-Schimnich A, et al. Associations of amyloid and  
297 neurodegeneration plasma biomarkers with comorbidities. *Alzheimer's & Dementia*. 2022;18(6):1128-  
298 1140.

299

300

301

**Table 1: Descriptive characteristics of the pooled sample<sup>a</sup>**

Characteristic	Combined sample	NC	MCI	<i>P</i> -value <sup>b</sup>	
<b>N</b>	973	560 (57.6%)	413 (42.4%)		
<b>Age, years mean (SD)</b>	66.52 (8.83)	64.7 ± 8.3	69.0 ± 8.9	<0.001*	
<b>Sex (%)</b>	<b>Female</b>	613 (63%)	383(68.4%)	230(55.7%)	<0.001*
	<b>Male</b>	360 (37%)	177(31.6%)	183(44.3%)	
<b>Race (%)</b>	<b>AA</b>	227 (23.33)	114(20.4%)	113(27.4%)	0.011*
	<b>White</b>	746 (76.67%)	446(79.6%)	300(72.6%)	
<b>eGFR mean (SD)</b>	78.00 (16.70)	79.2 (15.9)	76.3 (17.6)	0.007*	
<b>Aβ42, pg/ml: mean (SD)</b>	385.15 (178.22)	457.2 (184.1)	287.5 (111)	<0.001*	
<b>Tau, pg/ml mean (SD)</b>	66.75 (43.29)	51.3 (23.4)	87.6 (53.9)	<0.001*	
<b>pTau pg/ml mean (SD)</b>	31.52 (22.08)	24.9 (11.9)	40.6 (28.6)	<0.001*	
<b>Aβ42/tau Ratio mean (SD)</b>	8.06 (6.09)	10.7 (6.4)	4.5 (3.1)	<0.001*	

<sup>a</sup> **Abbreviations:** - **NC:** Normal Cognition, **MCI:** Mild Cognitive Impairment, **SD:** standard deviation, **N:** Sample size, **eGFR:** Estimated Glomerular Filtration Rate, **Aβ42:** Amyloid-β42, **Tau:** Tau protein, **pTau:** Phosphorylated Tau protein, **AA:** African American.

<sup>b</sup> *P*-values obtained through a pooled analysis using t-test for continuous data, and chi-square for discrete data.



**Table 2: Association of CSF biomarkers with estimated Glomerular filtration rate from the pooled sample<sup>ab</sup>**

<b>Biomarker</b>	<b>Change<sup>c</sup> per unit of eGFR (95% CI)</b>	<b>P-value</b>	<b>MCI adjusted Change<sup>d</sup> per unit of eGFR (95% CI)</b>	<b>P-value</b>
<b>A<math>\beta</math>42 pg/ml</b>	0.75, (0.27,1.23)	0.002	0.52 (0.03, 1.01)	0.04
<b>Tau pg/ml</b>	-0.39, (-0.55, -0.23)	<0.001	-0.23 (-0.38, -0.09)	0.001
<b>pTau pg/ml</b>	-0.13, (-0.19, -0.06)	0.0002	-0.07 (-0.14, -0.01)	0.02
<b>A<math>\beta</math>42/Tau Ratio</b>	0.033, (0.02,0.05)	<0.001	0.03 (0.01, 0.04)	0.002

<sup>a</sup> **Abbreviations:** **CI 95%:** 95% Confidence Interval, **eGFR:** Estimated Glomerular Filtration Rate, **MCI:** Mild Cognitive Impairment, **A $\beta$ 42:** Amyloid- $\beta$ 42, **Tau:** Tau protein, **pTau:** Phosphorylated Tau protein.

<sup>b</sup> *P*-values were obtained through a meta-analysis using linear mixed-effects models and ‘Study’ as a random effect.

<sup>c</sup> Change is the Beta coefficient for the change in the CSF biomarker Levels per change in eGFR.

<sup>d</sup> Change is the Beta coefficient for the change in the CSF biomarker Levels per change in eGFR adjusted for MCI

**Table 3: Interaction between MCI, CSF biomarkers, and eGFR from the pooled sample <sup>ab</sup>**

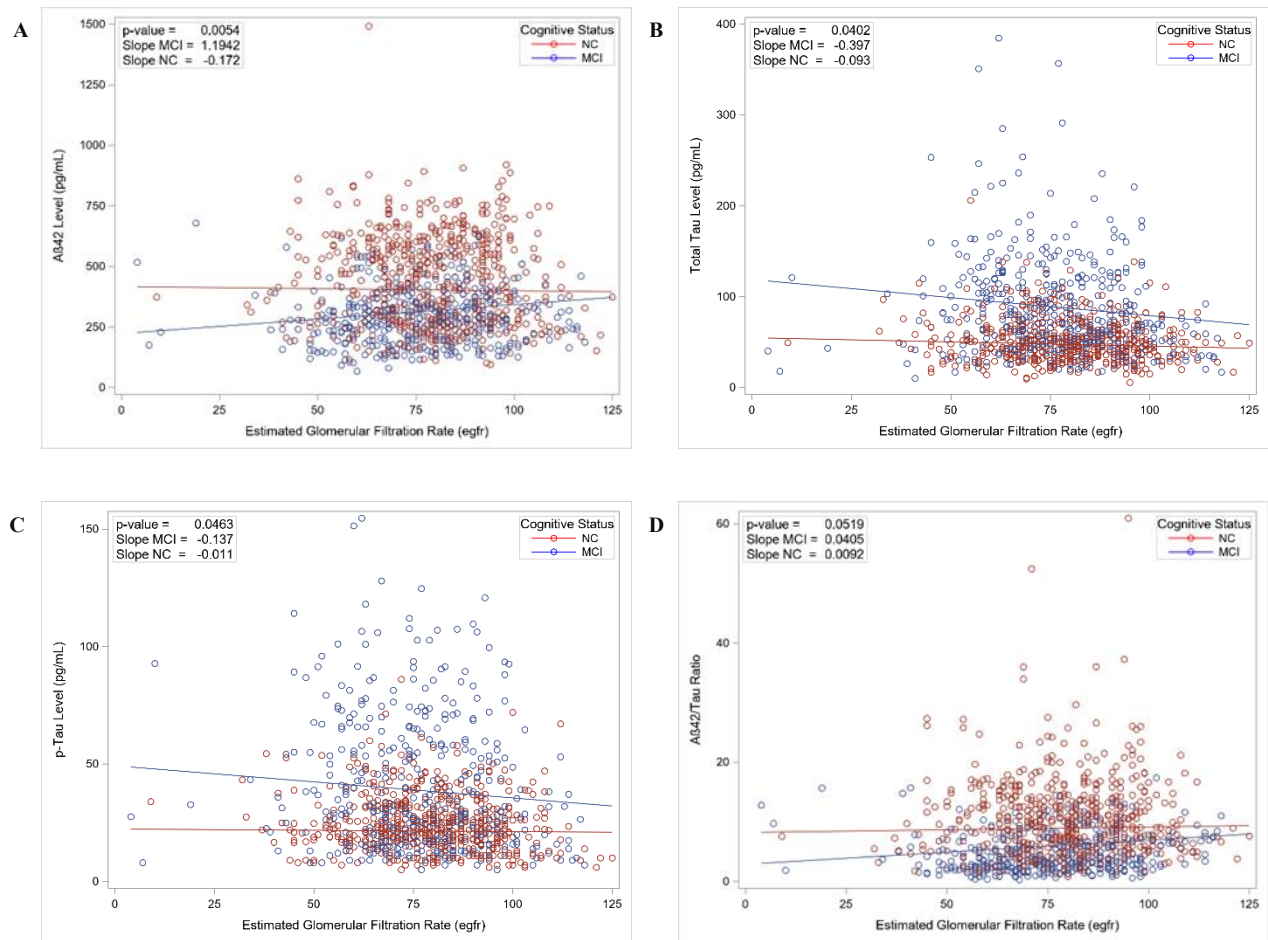
<b>Biomarkers</b>	<b>Effects</b>	<b><math>\beta</math></b>	<b>CI 95%</b>	<b>P-value<sup>c</sup></b>
<b>A<math>\beta</math>42 pg/ml</b>	eGFR * MCI	1.37	(0.4, 2.33)	0.005
<b>Tau pg/ml</b>	eGFR * MCI	-0.30	(-0.59, -0.01)	0.04
<b>pTau pg/ml</b>	eGFR * MCI	-0.13	(-0.25, 0)	0.05
<b>A<math>\beta</math>42/Tau Ratio</b>	eGFR * MCI	0.03	(0, 0.06)	0.05

---

<sup>a</sup> **Abbreviations:**  $\beta$ : Beta coefficient for interaction between CSF biomarkers, **CI 95%:** 95% Confidence Interval, **MCI:** Mild Cognitive Impairment, **eGFR:** Estimated Glomerular Filtration Rate, **A $\beta$ 42:** Amyloid- $\beta$ 42, **Tau:** Tau protein, **pTau:** Phosphorylated Tau protein.

<sup>b</sup> Model includes the interaction term eGFR\*MCI and uses Study as a random effect.

<sup>c</sup> P-values obtained through Meta-analysis of the data from both studies (BSHARP & CRIN).



**Figure 1. Impact of MCI on the Association Between CSF AD-Biomarker levels and eGFR**

Interaction analysis performed using linear mixed models to assess differences in the relationship between cerebrospinal fluid (CSF) Alzheimer's disease (AD) biomarker levels: (A) Aβ42, (B) Tau, (C) pTau, and (D) Aβ42/Tau Ratio and estimated glomerular filtration rate (eGFR) based on Cognitive status. The slope and intercept are plotted separately for individuals with Mild Cognitive Impairment (MCI) and those with Normal Cognition (NC). The p-value presented is for the interaction term (eGFR\*MCI), it suggests a significant difference in the association between these variables based on cognitive status.