

1 **Negative association between higher maternal body mass index and**
2 **breastfeeding outcomes is not mediated by DNA methylation**

3

4 Hannah R. Elliott^{1,2*}, Chloe L. Bennett³, Doretta Caramaschi^{1,2,4a}, Sinead English^{3a*}

5

6 ¹MRC Integrative Epidemiology Unit, University of Bristol, Bristol, United Kingdom.

7 ²Population Health Sciences, Bristol Medical School, University of Bristol, Bristol, United
8 Kingdom

9 ³School of Biological Sciences, University of Bristol, United Kingdom

10 ⁴ Faculty of Health and Life Sciences, Department of Psychology, University of Exeter,
11 Exeter, UK

12

13

14 *Corresponding author emails: Hannah.elliott@bristol.ac.uk; sinead.english@bristol.ac.uk

15 ^aThese authors jointly supervised the project

16

17

18 **Abstract**

19 The benefits of breastfeeding for the health and wellbeing of both infants and mothers are
20 well documented, yet global breastfeeding rates are low. One factor associated with low
21 breastfeeding is maternal body mass index (BMI), which is used as a measure of obesity.
22 The negative relationship between maternal obesity and breastfeeding is likely caused by a
23 variety of social, psychological, and physiological factors. Maternal obesity may also have a
24 direct biological association with breastfeeding through changes in maternal DNA
25 methylation. Here, we investigate this potential biological association using data from a UK-
26 based cohort study, the Avon Longitudinal Study of Parents and Children (ALSPAC). We
27 find that pre-pregnancy body mass index (BMI) is associated with lower initiation to
28 breastfeed and shorter breastfeeding duration. We conduct epigenome-wide association
29 studies (EWAS) of maternal BMI and breastfeeding outcomes and candidate-gene analysis
30 of methylation sites associated with BMI identified via previous meta-EWAS. We find that
31 DNA methylation at cg11453712, annotated to PHTP1, is associated with maternal BMI.
32 From our results, neither this association nor those at candidate-gene sites are likely to
33 mediate the link between maternal BMI and breastfeeding.

34

35 **Keywords:** Breastfeeding, maternal BMI, ALSPAC, DNA methylation, epigenetic,
36 epigenome-wide association studies (EWAS)

37 **Introduction**

38 Breastfeeding is associated with a multitude of benefits to mothers and infants, both in the
39 short and long term, including reduced risk of breast cancer, diabetes and obesity, and
40 improved cognition^{1,2}. The World Health Organisation recommends exclusive breastfeeding
41 (EBF) as the main infant feeding method for the first 6 months of life³. Despite health
42 benefits, rates of breastfeeding initiation and duration remain low globally. A 2010 study on
43 breastfeeding rates in the UK showed that, while 83% of mothers initiate breastfeeding, only
44 24% were EBF at 6 weeks, and 1% at 6 months⁴. These trends are apparent in countries
45 with both high and low income, with evidence suggesting that increasing breastfeeding rates
46 worldwide could lead to prevention of 823,000 deaths of children under 5 years old
47 annually². Strategies are required to increase breastfeeding rates, but for these to be most
48 effective, understanding the mechanisms underlying reduced breastfeeding rates is
49 essential.

50

51 Of several factors associated with reduced breastfeeding, maternal obesity is of particular
52 concern. The prevalence of overweight and obesity among women of reproductive age is
53 increasing globally: in 2016, it was estimated that 40% of women aged 18 or over were
54 overweight^{5,6}. Body mass index (BMI) denotes the weight of an individual relative to the
55 square of their height and is used to categorise overweight and obesity^{5,6}. Extensive studies
56 have shown that obesity or high pre-pregnancy BMI are associated with lower breastfeeding
57 initiation and shorter breastfeeding duration⁶⁻⁹. Potential causes behind this relationship
58 include socio-cultural factors such as low self-esteem and body confidence, physical factors
59 such as difficulties for the infant when latching to the breast, and physiological factors such
60 as hormone imbalances or low milk supply in women who are overweight or obese¹⁰⁻¹².
61 Indeed, there is evidence that the second stage of lactogenesis (i.e., from 3 days up to one
62 week after birth) is delayed in overweight women^{13,14}. While the link between BMI and
63 psychosocial factors associated with breastfeeding has been well explored^{12,15}, there has
64 been less investigation into the underlying biological or physiological mechanisms.

65

66 Here, we explore the biological association between high maternal BMI and reduced
67 breastfeeding, focussing on the potential role of DNA methylation. DNA methylation
68 is typically measured as attachment of a methyl group to a cytosine adjacent to a guanine
69 nucleotide (referred to as a CpG site). It is a biological mechanism involved in regulation of
70 gene expression that is influenced by both genetics and environment^{16,17}. There is growing
71 evidence from several cohort studies that there are maternal epigenetic differences
72 associated with increased BMI¹⁸⁻²⁸, with loci in biological pathways involved in lipid
73 metabolism, adipose tissue hypoxia, and inflammation, although the relevant loci are not

74 always consistent across studies. For most sites identified, causal inference analyses
75 indicate that the likely pattern is that increased BMI leads to changes in methylation rather
76 than vice versa^{21,23,26}. Breastfeeding has been associated with differential methylation
77 profiles in offspring^{29,30}. Studies have also addressed how the DNA methylation profile of
78 mothers changes across pregnancy³¹, with differential methylation in loci associated with
79 metabolism and mammary gland development. Less understood, however, is how maternal
80 DNA methylation is associated with breastfeeding outcome, and how this might depend on
81 maternal BMI. For example, the physiological effect of delayed lactogenesis among
82 overweight mothers may have an epigenetic association.

83

84 Here, we analyse data from a UK population study, the Avon Longitudinal Study of Parents
85 and Children (ALSPAC), to investigate, first, the extent to which maternal BMI is associated
86 with breastfeeding outcomes, and second, whether any such associations are potentially
87 mediated by BMI-associated methylation in pregnant mothers. To achieve the latter, we
88 conducted epigenome-wide association studies (EWAS) of methylation and its association
89 with maternal BMI, breastfeeding initiation, and breastfeeding duration.

90

91 We also conducted specific candidate-gene analysis using a predetermined set of CpG sites
92 known to be associated with BMI in adults, identified using a large meta-analysis of 18
93 studies²⁸, to ascertain whether these sites are also associated with BMI in pregnant women
94 and whether methylation at these sites is associated with breastfeeding practices. Any
95 associations found between the traits of interest and DNA methylation within the maternal
96 epigenome could be used to support the hypothesis that DNA methylation acts as a
97 mediator in the relationship between increased maternal BMI and reduced breastfeeding
98 rates.

99

100 **Results**

101 *Sample characteristics*

102 The descriptive statistics generated for the ALSPAC sample used in our study, and ARIES
103 subset are shown in Table 1. ARIES mothers are broadly similar to the ALSPAC sample, in
104 line with previous evidence³². Even though the comparisons are generally consistent, ARIES
105 mothers have a lower prevalence of smoking during pregnancy; and a higher proportion of
106 ARIES mothers initiated and maintained breastfeeding practice compared to mothers in the
107 broader ALSPAC dataset. We only included mothers with non-missing information in the
108 EWAS. As such, 724 samples were included in the EWAS of maternal BMI, 718 samples
109 were included in the EWAS of breastfeeding initiation and 602 individuals were included in
110 the EWAS of breastfeeding duration.

111

112 *Association between maternal BMI and breastfeeding (initiation and duration)*

113 In both univariate and multivariate models (including potentially confounding variables of
114 breastfeeding intention, maternal smoking, age, occupation, parity, and education), maternal
115 BMI was negatively associated with whether a mother initiated breastfeeding or not
116 (univariate model, $n=10,548$; odds ratio OR [95% confidence interval CI]: 0.962 [0.951,
117 0.973]; multivariate model, $n= 7,704$; OR [CI]: 0.944 [0.921, 0.969]). Similarly, among
118 mothers who did breastfeed, the duration of breastfeeding was lower for those mothers with
119 higher BMI (univariate model, $n= 7,166$; Beta [CI]: -0.108 [-0.138, -0.079]; multivariate
120 model, $n= 5,645$; Beta [CI]: -0.091 [-0.123, -0.059]). When we analysed breastfeeding
121 duration as a categorical variable, we also find that higher BMI is associated with shorter
122 breastfeeding outcomes (univariate model, $n= 9,761$; OR [CI]: 0.946 [0.936, 0.954;
123 multivariate model, $n= 7,298$; OR [CI]: 0.944 [0.931, 0.956]). For results describing all
124 covariates, see Tables S1–3 (ESM). Note that we found qualitatively similar results when we
125 considered categorised pre-pregnancy BMI (rather than continuous) as a covariate, and
126 when we analysed breastfeeding duration (in months) as a time-to-event process, with
127 proportional hazards models (Tables S4, Figure S1, ESM).

128

129 *Epigenome-wide association analyses*

130 (i) *Maternal BMI*

131 In the univariate model, three CpG sites were identified below the genome wide threshold
132 ($p < 2.4 \times 10^{-7}$) when maternal BMI was modelled as the exposure variable. A total of 45 CpG
133 sites were associated with maternal BMI at $p < 1.0 \times 10^{-5}$. A lambda of 2.34 indicated
134 moderate inflation of p -values. In multivariate analysis, one CpG site was identified below
135 the genome wide threshold ($p < 2.4 \times 10^{-7}$) when maternal BMI was modelled as the
136 exposure variable (see Figure 1). The lambda value ($\lambda = 1.29$) indicates minor inflation of the
137 results. A total of 20 CpG sites were associated with maternal BMI at $p < 1.0 \times 10^{-5}$ in the
138 multivariate analysis, as detailed in Table 2.

139

140 (ii) *Breastfeeding initiation*

141 In the univariate model, we did not identify any CpGs associated with breastfeeding initiation
142 at the genome wide threshold ($p < 2.4 \times 10^{-7}$) and only one CpG at $p < 1.0 \times 10^{-5}$. A lambda
143 value of 1.33 indicated minor inflation of p -values. In the multivariate model, we did not
144 identify any CpG sites associated with breastfeeding initiation below the genome wide
145 threshold ($p < 2.4 \times 10^{-7}$, Figure 1). The lambda value ($\lambda=1.27$) indicates minor inflation of the
146 results. Breastfeeding initiation was associated with 6 CpGs in the multivariate model at $p <$
147 1.0×10^{-5} (Table 2).

148

149 *(iii) Breastfeeding duration*

150 In the univariate model, we identified one CpG site associated with breastfeeding duration,
151 coded as a continuous variable, below the genome wide threshold ($p < 2.4 \times 10^{-7}$). Three
152 CpG sites were at $p < 1.0 \times 10^{-5}$. The lambda value ($\lambda=1.00$) indicated no inflation of p -
153 values. In multivariate analysis, we did not identify any CpG sites associated with
154 breastfeeding duration below the genome wide threshold ($p < 2.4 \times 10^{-7}$, Figure 1). The
155 lambda value ($\lambda=1.02$) also showed no genome wide inflation of p -values versus those
156 expected. Continuously measured breastfeeding duration was associated with 3 CpG sites
157 in the multivariate model at $p < 1.0 \times 10^{-5}$ (Table 2).

158

159 Full EWAS results for all EWAS presented in this paper are detailed in Supplementary
160 Tables S5-7, ESM and Manhattan plots of fully adjusted models are shown in Figure 1.

161

162 *Candidate gene analysis*

163 The results for the candidate gene analysis found that none of the 52 CpG sites drawn from
164 the Do *et al.* meta-EWAS analysis of BMI²⁸ met the p -value threshold of 1.00×10^{-05} (Table
165 2) in ALSPAC EWAS of BMI, breastfeeding initiation or breastfeeding duration. ALSPAC test
166 statistics for the CpG sites identified in Do *et al.* are shown in Supplementary Table 8, ESM.
167 We evaluated the consistency in direction of effects between our EWAS of maternal BMI
168 and results reported by Do *et al.* and calculated the proportion of CpGs which had the same
169 direction of effect using a binomial test of the null hypothesis that the proportion is equal to
170 0.5. 39/52 CpG sites showed consistency of direction of effect estimate, binomial test p -
171 value 4.1×10^{-4} . We therefore demonstrate that there is weak evidence for association
172 between BMI and DNA methylation in pregnant women in the ALSPAC cohort, but effect
173 estimates are consistently in the same direction as previously reported in the literature. None
174 of the CpG sites identified to be associated with BMI in the Do *et al.* study are, however,
175 associated with the breastfeeding measures assessed in ALSPAC.

176

177

178 **Discussion**

179 In this study, we first confirmed previously established associations between high maternal
180 pre-pregnancy BMI and lower initiation and duration of breastfeeding, using analysis of the
181 UK ALSPAC population study. We then conducted EWAS to identify whether maternal BMI
182 and breastfeeding practice were associated with DNA methylation at CpG sites in the
183 maternal genome, which could act as potential mediators in the relationship between
184 increased maternal BMI and lowered breastfeeding rates. We found BMI to be associated

185 with DNA methylation at one CpG site and putatively associated with further 19 CpG sites.
186 However, none of these sites were associated with breastfeeding initiation or duration.

187

188 We find a negative association between higher maternal BMI and breastfeeding outcome –
189 both in terms of whether it was initiated and how long it lasted – in line with several other
190 studies on this topic across diverse cohorts^{6,8,11}. Given that obesity rates are rising rapidly
191 across the world, and breastfeeding rates remain low despite known benefits, studies
192 investigating why high-BMI mothers are less likely to breastfeed their babies could help
193 inform policy to improve breastfeeding outcome. We acknowledge limitations of using BMI
194 as a measure of obesity³³, yet appreciate that it is a practical measure and can be used at
195 scale in population studies such as ALSPAC.

196

197 Potential factors explaining the replicated negative relationship between BMI and
198 breastfeeding outcome include delayed lactogenesis. The second stage of lactogenesis,
199 which occurs on average around 3 days up to a week after birth, is more likely to be delayed
200 in overweight women^{13,14}. We originally hypothesised that biological factors behind this
201 phenomenon could be captured by epigenetic biomarkers in peripheral blood during
202 pregnancy. Finding such biomarkers could have implications in identifying women in need of
203 extra support and could further our understanding of the mechanisms behind delayed
204 lactogenesis. However, we did not find strong evidence to support our hypothesis. Other
205 potential factors that have been previously linked with suboptimal breastfeeding outcomes
206 are parity, delivery method, experience of epidural, and infant behaviour after birth^{13,14}. We
207 adjusted our analyses for parity as a potential confounder in the associations between
208 maternal BMI and breastfeeding. Further studies should explore the other factors as
209 potential mediators between high BMI and low breastfeeding initiation and duration.

210

211 A robust relationship between BMI and DNA methylation was evidenced by previous large
212 epigenome-wide association studies in the general population^{23,28}, therefore we
213 hypothesised that we would find a similar link in UK pregnant women. Although less
214 powered, our study found associations in the same directions as found by the largest EWAS
215 of BMI²⁸. We also found novel associations, though we are cautious about these unless
216 replicated in other cohorts. The strongest association is located on the PHTP1 gene,
217 encoding a phosphatase not previously linked to obesity. To our knowledge, this is the first
218 study investigating this question in pregnant women, and our results suggest that during
219 pregnancy the relationship between BMI and DNA methylation might be altered, potentially
220 due to immune-metabolic changes typical of pregnancy^{34,35}. Previous studies that attempted

221 to investigate the link between BMI and DNA methylation during pregnancy focussed on
222 candidate genes encoding leptin and adiponectin and found associations³⁶. Neither of these
223 loci appear on our top list of genes associated with BMI, however, using the relaxed *p*-value
224 threshold.

225

226 Our EWAS of breastfeeding outcome did not identify CpG sites whose methylation in the
227 peripheral blood of pregnant women is associated with breastfeeding outcomes in our study.
228 To our knowledge, this is the first study examining this link and we conducted an
229 epigenome-wide scan across more than 450,000 CpG sites. It is possible that if there are
230 true associations, their effect sizes will be too small to detect with our sample. The lack of
231 study populations with DNA methylation data on pregnant women limited our sample size.
232 However, if the top associations found with breastfeeding using the relaxed threshold are
233 true, they suggest implications of the LPP and NXN genes. Methylation at these genes in the
234 offspring at birth was also associated with maternal BMI and pre-pregnancy
235 overweight/obesity in a previous study, though at different CpG sites in the same loci³⁷. DNA
236 methylation at these genes was not affected antenatally in the mothers in our study. One
237 explanation for this is an intergenerational effect via alterations of fetal development and with
238 consequent challenges around delivery and in the baby's feeding behaviour, rather than the
239 mother's own ability to lactate. For instance, a recent study shows that early pregnancy BMI
240 is linked with DNA methylation in placental tissue³⁸.

241

242 We also conducted a targeted approach, analysing candidate CpG sites previously found to
243 be associated with BMI from a broader EWAS²⁸. Similar to our EWAS analysis, we did not
244 find support that methylation associated with BMI is linked with reduced breastfeeding
245 outcomes. These results, together with the EWAS results, do not support our hypothesis that
246 DNA methylation is implicated in the link between maternal BMI and breastfeeding practice.
247 It is possible, however, that biological mechanisms unrelated to peripheral blood DNA
248 methylation are involved in mediating the link between BMI and reduced breastfeeding.
249 Further studies should be focused on elucidating these mechanisms. Another explanation is
250 that biological mechanisms are less involved and that social and cultural aspects play a
251 stronger role in the negative association between maternal overweight and breastfeeding
252 outcome. For instance, many women fail to reach their own breastfeeding goals because of
253 discouraging factors such as employer support, husband involvement and social attitudes³⁹.
254 Moreover, studies have shown there can be a general negative public attitude towards
255 breastfeeding⁴⁰, and it is possible that overweight women are more vulnerable to these

256 attitudes⁴¹. In any case, considering the challenges that overweight women face around
257 breastfeeding, more dedicated support might be beneficial to increase breastfeeding rates.

258

259 Despite the main strengths of our study accessing a large and rich intergenerational dataset
260 and exploring a novel question, our study has several limitations. First, we had a small
261 sample size for the methylation studies. Although the initial ALSPAC cohort recruited more
262 than 14,000 pregnancies, the subsample with antenatal blood samples and data on BMI,
263 breastfeeding outcome and covariates data is lower than 1000 mother-child pairs. This is
264 considered an under-powered sample size for EWAS studies of outcomes such as BMI and
265 it is increasingly common to combine multiple cohorts to greatly increase the number of
266 subjects. For example, Sharp et al³⁷ were able to meta-analyse the association between
267 maternal pre-pregnancy BMI and methylation in the peripheral blood of offspring across 19
268 longitudinal cohorts, resulting in a sample size of 9,340. Obtaining a sample size of this
269 magnitude increases internal and external validity and reliability of results, as natural
270 variation can greatly affect DNA methylation and hence the outcomes of the study⁴². A
271 second drawback to our study was that the analyses were not replicated. Future similar
272 studies should be conducted to further investigate the association between increased BMI
273 and DNA methylation in antenatal blood and how this methylation is associated with
274 breastfeeding practice. An additional limitation of the EWAS in this study is tissue
275 availability. The advantage of using peripheral blood as a surrogate tissue is that it can be
276 collected in large quantities and is easy to store. In the context of this study, to assess the
277 association between breastfeeding practice and changes to the DNA methylation profile,
278 breast tissue samples (preferably prenatally or during the period where the mother
279 breastfeeds) would be the optimal sample tissue. This would lead to more accurate and
280 compelling analyses of associations between breastfeeding practice and breast tissue DNA
281 methylation.

282

283 In conclusion, this study provides the first insight into the maternal epigenome and its
284 association with maternal pre-pregnancy BMI and breastfeeding initiation and duration. The
285 results from this study did not support our mediation hypothesis, that DNA methylation could
286 explain putative pattern of reduced breastfeeding among overweight mothers, yet owing to
287 our underpowered study we are cautious to infer that this does not mean that BMI-
288 associated methylation is not associated with reduced breastfeeding at all. Our novel
289 investigation into the relationship between maternal exposures such as BMI and
290 breastfeeding on maternal DNA methylation provides the framework for more in-depth study

291 into the physiological mechanisms that impede a mother's ability to breastfeed, and future
292 studies could expand our analyses to more cohorts, and consider other biological pathways.

293

294 **Methods**

295 *Study cohort*

296 The Avon Longitudinal Study of Parents and Children (ALSPAC) is a birth cohort study that
297 investigates modifiable influences on child health and development^{43,44}. Pregnant women
298 resident in Avon, UK, with expected dates of delivery between 1st April 1991 and 31st
299 December 1992 were invited to take part in the study. The initial number of pregnancies
300 enrolled was 14,541. Of the initial pregnancies, there was a total of 14,676 fetuses,
301 resulting in 14,062 live births and 13,988 children who were alive at 1 year of age.

302

303 *Ethical approval*

304 Ethical approval for the study was obtained from the ALSPAC Ethics and Law Committee
305 and the Local Research Ethics Committees. Informed consent for the use of data collected
306 via questionnaires and clinics was obtained from participants following the recommendations
307 of the ALSPAC Ethics and Law Committee at the time. Consent for biological samples has
308 been collected in accordance with the Human Tissue Act (2004).

309

310 *Study measures*

311 (i) *Maternal body mass index (BMI)*

312 BMI is the metric currently used for defining anthropometric height/weight characteristics and
313 typically categorizing them into groups, and its common interpretation is that it is a measure
314 of extent of overweight and obesity^{5,6}. We used self-reported measures of pre-pregnancy
315 weight (in kilograms) and height (in metres) from the 'About Yourself' mother-completed
316 questionnaire which can be found in the ALSPAC data dictionary. Maternal BMI was
317 calculated as weight (kg) / height (m²) as a continuous variable; and analyses were repeated
318 with maternal BMI categorised as ≤ 30 (0) or ≥ 30 (1), following standard WHO
319 categorisation⁴⁵ which defines obese as ≥ 30 , overweight as 25-29 and 'normal' or
320 'acceptable' as < 25 .

321

322 (ii) *Breastfeeding outcome*

323 Data regarding breastfeeding outcome were collected from two questionnaires administered
324 to the mother when the child was 6 months and 15 months of age respectively. Three
325 different measures of breastfeeding were used: (1) breastfeeding initiation, a binary indicator
326 ('yes' or 'no') of whether the mother had ever initiated any breastfeeding before the child had
327 reached 6 months of age; and, for those mothers who initiated breastfeeding, (2) continuous

328 breastfeeding duration, measured as the age in months (from 0–15) of the child when
329 breastfeeding stopped, derived from the 15-month questionnaire, and (3) categorical
330 breastfeeding duration, i.e. never, up to 3 months, 3 to 5 months and 6 or more months,
331 derived from the 6-month questionnaire, as this provided data for a larger number of
332 mothers. Further details on how these variables were derived can be found in the ‘My
333 Son/My Daughter’ mother-completed questionnaire in the ALSPAC data dictionary.

334

335 (iii) *DNA methylation*

336 DNA methylation data was obtained using Illumina 450k BeadChip arrays from the
337 Accessible Resource for Integrated Epigenomics Studies (ARIES) project³². Blood samples
338 from a sub-set of 1,018 ALSPAC participants were taken at three time points for the child
339 (neonatal, childhood (mean age 7.5 years) and adolescence (mean age 17.1 years)) and at
340 two time points for the mothers (antenatal and during their child’s adolescence (mean age
341 17.1 years)). The DNA methylation data used in this study were from samples collected at
342 the antenatal time point from mothers.

343

344 Normalisation was carried out using the *meffil* R package⁴⁶. Samples showing evidence of
345 population stratification based on ALSPAC genetic data were removed (n=29). Methylation
346 status was quantified as the ratio of the methylated probe intensity and the overall intensity
347 (sum of methylated and unmethylated probe intensities) resulting in a beta-value between 0
348 (completely unmethylated) and 1 (completely methylated)⁴⁷. This beta-value represents the
349 proportion of methylated cells within the sample. The impact of outliers was reduced by
350 setting all methylation data points outside 3 times the interquartile range from the 25th to the
351 75th percentiles as missing. Final EWAS analyses included a total of $N = 482,855$ probes
352 and 933 individuals.

353

354 (iv) *Covariates*

355 The following variables were included in the analyses to adjust for confounding effects⁴⁸⁻⁵¹.
356 Maternal age at delivery was derived from a questionnaire administered 8 weeks after the
357 child’s birth using the self-reported date of birth of the mother and the date of birth of the
358 child, measured as a continuous variable. Parity was categorised as either nulliparous or
359 multiparous derived from a questionnaire administered at 18 weeks’ gestation. Maternal
360 smoking during pregnancy was categorised as either never smoking during pregnancy or
361 smoking during pregnancy, derived from a questionnaire administered at 23 weeks’
362 gestation. The following variables were derived from a questionnaire administered at 32
363 weeks’ gestation: whether the mother intended to breastfeed in the first month
364 (recategorized as ‘yes’, ‘maybe’ or ‘no’ following methodology of Jones et al.⁵²); maternal

365 education, categorised as having completed qualifications below A-Levels or completed the
366 qualifications of A-Levels and above; and occupational social class, categorised according to
367 whether the mother or father had a manual or non-manual occupation (whichever was
368 highest) according to the National Statistics Socio-economic Classification. For the
369 methylation analyses, estimated cell counts were derived⁵³ and included as model
370 covariates. Given the low ethnic diversity in our sample (<3% identified as non-white), we did
371 not include maternal ethnicity as a covariate.

372

373 *Statistical analysis*

374 Analyses were carried out in R (version 4.1.0⁵⁴). Descriptive statistics were calculated for
375 the ALSPAC sample and for the ARIES subset. Any mothers with missing data for any of the
376 exposure or covariates were removed, leaving only complete cases for the primary
377 analyses. The final samples contained only singleton births. Descriptive statistics for each
378 subset (both for the ALSPAC phenotype dataset and ARIES subset EWAS sample) were
379 subsequently calculated, to check for similarity of samples across analyses.

380

381 *(i) Association of maternal BMI with breastfeeding*

382 We investigated whether maternal BMI was associated with breastfeeding outcome (i.e.,
383 initiation and duration) using multiple regression. For each analysis, we first ran a univariate
384 model considering only the association between maternal BMI and the breastfeeding
385 measure of interest. We subsequently repeated the analysis including covariates known
386 previously to be associated with breastfeeding (intention to breastfeed, maternal smoking,
387 age, occupational social class, parity, and education). For analysis of breastfeeding
388 initiation, we used a logistic regression with binomial error structure; for analysis of
389 continuous breastfeeding duration, we used a linear model with gaussian error; and for
390 analysis of categorical breastfeeding duration, we used ordinal logistic regression. We also
391 conducted analyses on continuous breastfeeding duration as a time-to-event analysis using
392 proportional hazards models, using the function `survfit` for univariate analyses and `coxph` for
393 multivariate, from the 'survival' package in R⁵⁵.

394

395 *(ii) Epigenome-wide association study (EWAS)*

396 Three EWASs were carried out using multiple linear regression to estimate the association
397 of DNA methylation in maternal antenatal peripheral blood with maternal BMI ($N = 724$),
398 breastfeeding initiation ($N = 718$), and breastfeeding duration as a continuous measure ($N =$
399 602). For the EWAS of maternal BMI, we modelled DNA methylation as the outcome. For
400 EWASs of breastfeeding, we modelled breastfeeding as the outcome. For analysis of
401 breastfeeding initiation, we used a logistic regression with binomial error structure; for

402 analyses of continuous breastfeeding duration and maternal BMI, we used a linear model
403 with gaussian error. All models were adjusted for maternal age, parity, maternal smoking
404 behaviour, maternal education, occupational social class, intention to breastfeed, cell-type
405 estimates and 10 Surrogate Variables generated using Surrogate Variables Analysis to
406 remove unmeasured confounding⁵⁶. For the EWASs on breastfeeding, maternal BMI was
407 also included as a covariate, to account for potential direct effects of BMI on breastfeeding
408 (in addition to those mediated through methylation).

409

410 To control for multiple testing, we set the genome-wide threshold at $p < 2.4 \times 10^{-7}$ ⁵⁷ as well
411 as reporting results at a relaxed threshold of $p < 1.0 \times 10^{-5}$. For each EWAS, the genomic
412 inflation factor (lambda λ) was calculated to quantify the extent of the inflation and the
413 excess false positive rate; quantile-quantile (Q-Q) plots were used as a visual tool to mark
414 deviations of the observed distributions from the expected distribution of p -values. EWASs
415 were carried out using R package *ewaff* (version: 0.0.2; <https://github.com/perishky/ewaff>).

416

417 (iii) Candidate-CpG analysis

418 To further investigate the potential association between maternal BMI and DNA methylation
419 and whether methylation is subsequently associated with breastfeeding practice, a
420 candidate gene analysis was carried out using a recent meta-EWAS of adult BMI across 18
421 studies by Do *et al.*²⁸. In this analysis, we restricted ALSPAC EWAS results to consider only
422 CpG sites that were associated with BMI in the Do *et al.* study, which identified 52 CpG sites
423 passing a false discovery rate adjustment in their meta-EWAS of adult BMI. We then
424 investigated whether these specific CpG sites were associated with maternal BMI and
425 breastfeeding practice in ALSPAC. We used a binomial test to assess agreement in
426 direction of effect estimates between the BMI meta-EWAS of Do *et al.* and the EWAS of BMI
427 in ALSPAC.

428

429 References

- 430 1 Horta, B. L. & Victora, C. G. Long-term effects of breastfeeding. A systematic review.
431 (World Health Organisation, 2013).
- 432 2 Victora, C. G. *et al.* Breastfeeding in the 21st century: epidemiology, mechanisms,
433 and lifelong effect. *The Lancet* **387**, 475-490, doi:10.1016/S0140-6736(15)01024-7
434 (2016).
- 435 3 World Health, O. & others. *Global strategy for infant and young child feeding*. (World
436 Health Organization, 2003).
- 437 4 McAndrew, F. *et al.* Infant feeding survey 2010. *Leeds: health and social care*
438 *information Centre* **2** (2012).
- 439 5 Who. WHO Factsheet; Obesity and overweight. (2021).

- 440 6 Amir, L. H. & Donath, S. A systematic review of maternal obesity and breastfeeding
441 intention, initiation and duration. *BMC Pregnancy Childbirth* **7**, 9, doi:10.1186/1471-
442 2393-7-9 (2007).
- 443 7 Li, R., Jewell, S. & Grummer-Strawn, L. Maternal obesity and breast-feeding
444 practices. *The American Journal of Clinical Nutrition* **77**, 931-936,
445 doi:10.1093/ajcn/77.4.931 (2003).
- 446 8 Flores, T. R., Mielke, G. I., Wendt, A., Nunes, B. P. & Bertoldi, A. D. Prepregnancy
447 weight excess and cessation of exclusive breastfeeding: a systematic review and
448 meta-analysis. *Eur J Clin Nutr* **72**, 480-488, doi:10.1038/s41430-017-0073-y (2018).
- 449 9 Marshall, N. E., Lau, B., Purnell, J. Q. & Thornburg, K. L. Impact of maternal obesity
450 and breastfeeding intention on lactation intensity and duration. *Maternal & Child*
451 *Nutrition* **15**, e12732, doi:10.1111/mcn.12732 (2019).
- 452 10 Lovelady, C. A. Is Maternal Obesity a Cause of Poor Lactation Performance? *Nutrition*
453 *Reviews* **63**, 352-355, doi:10.1111/j.1753-4887.2005.tb00113.x (2005).
- 454 11 Turcksin, R., Bel, S., Galjaard, S. & Devlieger, R. Maternal obesity and breastfeeding
455 intention, initiation, intensity and duration: a systematic review. *Maternal & Child*
456 *Nutrition* **10**, 166-183, doi:10.1111/j.1740-8709.2012.00439.x (2014).
- 457 12 Lyons, S., Currie, S., Peters, S., Lavender, T. & Smith, D. M. The association between
458 psychological factors and breastfeeding behaviour in women with a body mass index
459 (BMI) ≥ 30 kg m⁻²: a systematic review. *Obesity Reviews* **19**, 947-959,
460 doi:10.1111/obr.12681 (2018).
- 461 13 Nommsen-Rivers, L. A., Chantry, C. J., Peerson, J. M., Cohen, R. J. & Dewey, K. G.
462 Delayed onset of lactogenesis among first-time mothers is related to maternal
463 obesity and factors associated with ineffective breastfeeding. *Am J Clin Nutr* **92**, 574-
464 584, doi:10.3945/ajcn.2010.29192 (2010).
- 465 14 O'Sullivan, E. J., Perrine, C. G. & Rasmussen, K. M. Early Breastfeeding Problems
466 Mediate the Negative Association between Maternal Obesity and Exclusive
467 Breastfeeding at 1 and 2 Months Postpartum. *J Nutr* **145**, 2369-2378,
468 doi:10.3945/jn.115.214619 (2015).
- 469 15 Hauff, L. E., Leonard, S. A. & Rasmussen, K. M. Associations of maternal obesity and
470 psychosocial factors with breastfeeding intention, initiation, and duration. *The*
471 *American Journal of Clinical Nutrition* **99**, 524-534, doi:10.3945/ajcn.113.071191
472 (2014).
- 473 16 Jones, P. A. & Takai, D. The Role of DNA Methylation in Mammalian Epigenetics.
474 *Science* **293**, 1068-1070, doi:10.1126/science.1063852 (2001).
- 475 17 Duncan, E. J., Gluckman, P. D. & Dearden, P. K. Epigenetics, plasticity, and evolution:
476 How do we link epigenetic change to phenotype? *Journal of Experimental Zoology*
477 *Part B: Molecular and Developmental Evolution* **322**, 208-220,
478 doi:10.1002/jez.b.22571 (2014).
- 479 18 Dick, K. J. *et al.* DNA methylation and body-mass index: a genome-wide analysis. *The*
480 *Lancet* **383**, 1990-1998, doi:10.1016/S0140-6736(13)62674-4 (2014).
- 481 19 Aslibekyan, S. *et al.* Epigenome-wide study identifies novel methylation loci
482 associated with body mass index and waist circumference. *Obesity* **23**, 1493-1501,
483 doi:10.1002/oby.21111 (2015).
- 484 20 Demerath, E. W. *et al.* Epigenome-wide association study (EWAS) of BMI, BMI
485 change and waist circumference in African American adults identifies multiple

- 486 replicated loci. *Human Molecular Genetics* **24**, 4464-4479, doi:10.1093/hmg/ddv161
487 (2015).
- 488 21 Mendelson, M. M. *et al.* Association of Body Mass Index with DNA Methylation and
489 Gene Expression in Blood Cells and Relations to Cardiometabolic Disease: A
490 Mendelian Randomization Approach. *PLOS Medicine* **14**, e1002215,
491 doi:10.1371/journal.pmed.1002215 (2017).
- 492 22 Sayols-Baixeras, S. *et al.* DNA methylation and obesity traits: An epigenome-wide
493 association study. The REGICOR study. *Epigenetics* **12**, 909-916,
494 doi:10.1080/15592294.2017.1363951 (2017).
- 495 23 Wahl, S. *et al.* Epigenome-wide association study of body mass index, and the
496 adverse outcomes of adiposity. *Nature* **541**, 81-86, doi:10.1038/nature20784 (2017).
- 497 24 Wilson, L. E., Harlid, S., Xu, Z., Sandler, D. P. & Taylor, J. A. An epigenome-wide study
498 of body mass index and DNA methylation in blood using participants from the Sister
499 Study cohort. *Int J Obes* **41**, 194-199, doi:10.1038/ijo.2016.184 (2017).
- 500 25 Geurts, Y. M. *et al.* Novel associations between blood DNA methylation and body
501 mass index in middle-aged and older adults. *Int J Obes* **42**, 887-896,
502 doi:10.1038/ijo.2017.269 (2018).
- 503 26 Sun, D. *et al.* Body Mass Index Drives Changes in DNA Methylation. *Circulation*
504 *Research* **125**, 824-833, doi:10.1161/CIRCRESAHA.119.315397 (2019).
- 505 27 Chen, Y. *et al.* Impact of BMI and waist circumference on epigenome-wide DNA
506 methylation and identification of epigenetic biomarkers in blood: an EWAS in multi-
507 ethnic Asian individuals. *Clinical Epigenetics* **13**, 195, doi:10.1186/s13148-021-01162-
508 x (2021).
- 509 28 Do, W. L. *et al.* Examining the association between adiposity and DNA methylation: A
510 systematic review and meta-analysis. *Obes Rev* **22**, e13319, doi:10.1111/obr.13319
511 (2021).
- 512 29 Odintsova, V. V. *et al.* DNA Methylation Signatures of Breastfeeding in Buccal Cells
513 Collected in Mid-Childhood. *Nutrients* **11**, 2804, doi:10.3390/nu11112804 (2019).
- 514 30 Hartwig, F. P. *et al.* Association between Breastfeeding and DNA Methylation over
515 the Life Course: Findings from the Avon Longitudinal Study of Parents and Children
516 (ALSPAC). *Nutrients* **12**, 3309, doi:10.3390/nu12113309 (2020).
- 517 31 Gruzieva, O. *et al.* DNA Methylation Trajectories During Pregnancy. *Genet Epigenet*
518 **12**, 2516865719867090, doi:10.1177/2516865719867090 (2019).
- 519 32 Relton, C. L. *et al.* Data Resource Profile: Accessible Resource for Integrated
520 Epigenomic Studies (ARIES). *International Journal of Epidemiology* **44**, 1181-1190,
521 doi:10.1093/ije/dyv072 (2015).
- 522 33 Adab, P., Pallan, M. & Whincup, P. H. Is BMI the best measure of obesity? *BMJ* **360**,
523 k1274, doi:10.1136/bmj.k1274 (2018).
- 524 34 Weng, J., Couture, C. & Girard, S. Innate and Adaptive Immune Systems in
525 Physiological and Pathological Pregnancy. *Biology (Basel)* **12**,
526 doi:10.3390/biology12030402 (2023).
- 527 35 Forsum, E. & Lof, M. Energy metabolism during human pregnancy. *Annu Rev Nutr* **27**,
528 277-292, doi:10.1146/annurev.nutr.27.061406.093543 (2007).
- 529 36 Lesueur, C. *et al.* Tissue-specific Leptin promoter DNA methylation is associated with
530 maternal and infant perinatal factors. *Mol Cell Endocrinol* **381**, 160-167,
531 doi:10.1016/j.mce.2013.07.024 (2013).

- 532 37 Sharp, G. C. *et al.* Maternal BMI at the start of pregnancy and offspring epigenome-
533 wide DNA methylation: findings from the pregnancy and childhood epigenetics
534 (PACE) consortium. *Hum Mol Genet* **26**, 4067-4085, doi:10.1093/hmg/ddx290 (2017).
- 535 38 Ghildayal, N. *et al.* Early-pregnancy maternal body mass index is associated with
536 common DNA methylation markers in cord blood and placenta: a paired-tissue
537 epigenome-wide association study. *Epigenetics* **17**, 808-818,
538 doi:10.1080/15592294.2021.1959975 (2022).
- 539 39 Kong, S. K. & Lee, D. T. Factors influencing decision to breastfeed. *J Adv Nurs* **46**, 369-
540 379, doi:10.1111/j.1365-2648.2004.03003.x (2004).
- 541 40 Morris, C., Schofield, P. & Hirst, C. Exploration of the Factors Influencing Attitudes to
542 Breastfeeding in Public. *J Hum Lact* **36**, 776-788, doi:10.1177/0890334419878119
543 (2020).
- 544 41 Chang, Y. S., Glaria, A. A., Davie, P., Beake, S. & Bick, D. Breastfeeding experiences
545 and support for women who are overweight or obese: A mixed-methods systematic
546 review. *Matern Child Nutr* **16**, e12865, doi:10.1111/mcn.12865 (2020).
- 547 42 Michels, K. B. *et al.* Recommendations for the design and analysis of epigenome-
548 wide association studies. *Nat Methods* **10**, 949-955, doi:10.1038/nmeth.2632 (2013).
- 549 43 Boyd, A. *et al.* Cohort Profile: The 'Children of the 90s'—the index offspring of the
550 Avon Longitudinal Study of Parents and Children. *International Journal of*
551 *Epidemiology* **42**, 111-127, doi:10.1093/ije/dys064 (2013).
- 552 44 Fraser, A. *et al.* Cohort Profile: the Avon Longitudinal Study of Parents and Children:
553 ALSPAC mothers cohort. *Int J Epidemiol* **42**, 97-110, doi:10.1093/ije/dys066 (2013).
- 554 45 Seidell, J. C. & Flegal, K. M. Assessing obesity: classification and epidemiology. *British*
555 *Medical Bulletin* **53**, 238-252, doi:10.1093/oxfordjournals.bmb.a011611 (1997).
- 556 46 Min, J. L., Hemani, G., Davey Smith, G., Relton, C. & Suderman, M. Meffil: efficient
557 normalization and analysis of very large DNA methylation datasets. *Bioinformatics*
558 **34**, 3983-3989, doi:10.1093/bioinformatics/bty476 (2018).
- 559 47 Du, P. *et al.* Comparison of Beta-value and M-value methods for quantifying
560 methylation levels by microarray analysis. *BMC Bioinformatics* **11**, 587,
561 doi:10.1186/1471-2105-11-587 (2010).
- 562 48 Noble, S. & Team, T. A. S. Maternal employment and the initiation of breastfeeding.
563 *Acta Paediatrica* **90**, 423-428, doi:10.1111/j.1651-2227.2001.tb00444.x (2001).
- 564 49 Donath, S., Amir, L. & Team, T. A. S. Relationship between prenatal infant feeding
565 intention and initiation and duration of breastfeeding: a cohort study. *Acta*
566 *Paediatrica* **92**, 352-356, doi:10.1111/j.1651-2227.2003.tb00558.x (2003).
- 567 50 Donath, S., Amir, L. & Team, t. A. S. The relationship between maternal smoking and
568 breastfeeding duration after adjustment for maternal infant feeding intention. *Acta*
569 *Paediatrica* **93**, 1514-1518, doi:10.1111/j.1651-2227.2004.tb02639.x (2004).
- 570 51 Brion, M.-J. A. *et al.* What are the causal effects of breastfeeding on IQ, obesity and
571 blood pressure? Evidence from comparing high-income with middle-income cohorts.
572 *International Journal of Epidemiology* **40**, 670-680, doi:10.1093/ije/dyr020 (2011).
- 573 52 Jones, C. L., Culpin, I., Evans, J. & Pearson, R. M. Relative effects of breastfeeding
574 intention and practice on maternal responsiveness. *Infant Mental Health Journal* **41**,
575 82-93, doi:10.1002/imhj.21832 (2020).
- 576 53 Houseman, E. A. *et al.* DNA methylation arrays as surrogate measures of cell mixture
577 distribution. *BMC Bioinformatics* **13**, 86, doi:10.1186/1471-2105-13-86 (2012).

- 578 54 R: A Language and Environment for Statistical Computing (R Foundation for
579 Statistical Computing, Vienna, Austria, 2022).
- 580 55 Therneau, T. A Package for Survival Analysis in R. R package version 3.2-7. 2020. URL
581 <https://CRAN.R-project.org/package=survival> (2020).
- 582 56 Leek, J. T., Johnson, W. E., Parker, H. S., Jaffe, A. E. & Storey, J. D. The sva package for
583 removing batch effects and other unwanted variation in high-throughput
584 experiments. *Bioinformatics* **28**, 882-883, doi:10.1093/bioinformatics/bts034 (2012).
- 585 57 Saffari, A. *et al.* Estimation of a significance threshold for epigenome-wide
586 association studies. *Genet Epidemiol* **42**, 20-33, doi:10.1002/gepi.22086 (2018).
- 587
- 588
- 589

590 **Acknowledgements**

591 We are extremely grateful to all the families who took part in this study, the midwives for
592 their help in recruiting them, and the whole ALSPAC team, which includes interviewers,
593 computer and laboratory technicians, clerical workers, research scientists, volunteers,
594 managers, receptionists and nurses.

595

596 **Author contribution**

597 C.B. designed the study with input from D.C., S.E. and H.R.E.; C.B. conducted the initial
598 analyses, S.E. (phenotype analysis), H.R.E. (EWAS) and D.C. (both) verified these and
599 conducted the final analyses included in the report. All authors drafted the manuscript and
600 provided comments and edits.

601

602 **Data Availability**

603 The ALSPAC study website contains details of all the data that is available through a fully
604 searchable data dictionary and variable search tool
605 <http://www.bristol.ac.uk/alspac/researchers/our-data/>. ALSPAC data is available on request
606 by application to the ALSPAC executive committee (ALSPAC-exec@bristol.ac.uk). The
607 ALSPAC data management plan (available here:
608 www.bristol.ac.uk/alspac/researchers/access/) describes in detail the policy regarding data
609 sharing, which is through a system of managed open access.

610

611 **Additional Information**

612

613 **Competing Interests**

614 The authors have no competing interests to declare.

615

616 **Funding**

617 The UK Medical Research Council and Wellcome (Grant ref: 217065/Z/19/Z) and the
618 University of Bristol provide core support for ALSPAC. This publication is the work of the
619 authors. SE, DC and HRE will serve as guarantors for the contents of this paper.

620

621 A comprehensive list of grants funding is available on the ALSPAC website
622 (<http://www.bristol.ac.uk/alspac/external/documents/grant-acknowledgements.pdf>);
623 methylation data was supported by BBSRC BBI025751/1 and BB/1025263/1.

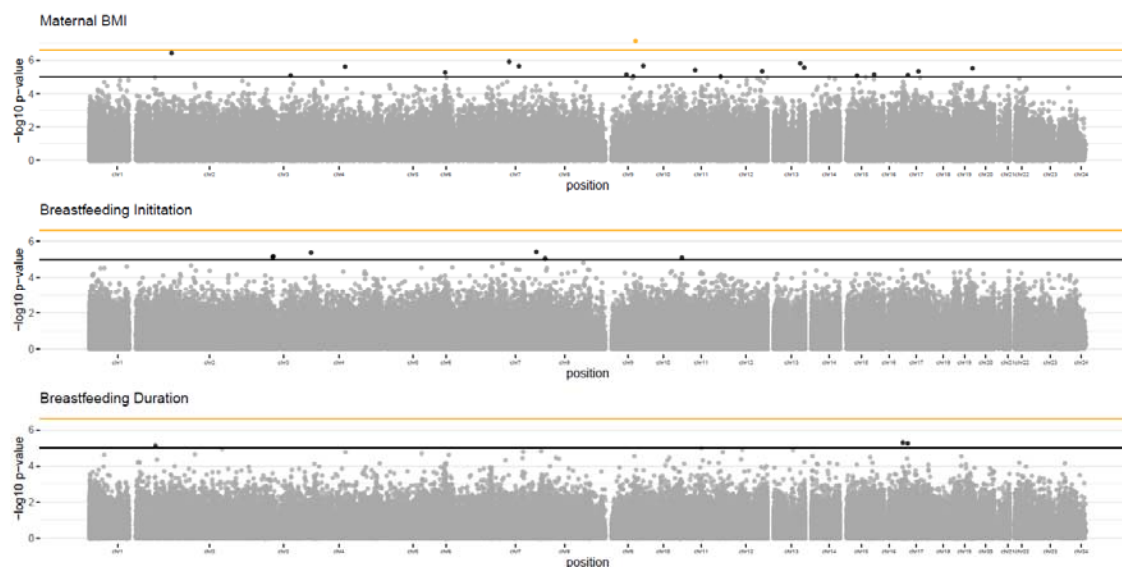
624

625 HRE and DC are members of the Medical Research Council Integrative Epidemiology Unit
626 at the University of Bristol, which is supported by the Medical Research Council and the
627 University of Bristol (MC_UU_00011/5). SE was supported by a Royal Society Dorothy
628 Hodgkin Fellowship (DH140236); and SE and CB received support from the University of
629 Bristol Biological Sciences MSci project programme.

630

631

632 Tables and Figures



633

634 Figure 1

635 *Manhattan plots showing the association between DNA methylation and phenotype*
636 *(maternal BMI, breastfeeding initiation, and breastfeeding duration) measured in maternal*
637 *blood samples from the ALSPAC cohort. Each point on the plots represents an individual*
638 *CpG site. The orange threshold line represents a genome wide threshold of $p < 2.4 \times 10^{-7}$*
639 *and CpG sites with p-values below this threshold are highlighted in orange. The black*
640 *threshold line represents a relaxed threshold of $p < 1.0 \times 10^{-5}$ and CpG sites with p-values*
641 *below this threshold are highlighted in black.*

642

644 **Table 1:** Comparison of the baseline characteristics for the exposure variables and
 645 covariates used in the EWAS between mothers included in ALSPAC only and the ARIES
 646 subset.
 647

Variable	ALSPAC dataset	ARIES subset (n=933)
	<i>Mean (standard deviation) OR %</i>	<i>Mean (standard deviation) OR %</i>
Pre-pregnancy BMI (continuous)	n = 11376 22.9 (3.9)	n = 861 22.8 (3.6)
Pre-pregnancy BMI (categorical)	n = 11376	n = 861
<25	79.33%	82.69%
25-29	15.10%	12.78%
>= 30	5.56%	4.53%
Parity	n = 12774	n = 902
Nulliparous	44.97%	46.90%
Multiparous	55.03%	53.10%
Age at delivery (years)	n = 11539 28.3 (4.8)	n = 898 29.6 (4.3)
Smoked during pregnancy	n = 12912	n = 916
Yes	18.79%	9.28%
No	81.21%	90.72%
Education level	n = 11413	n = 894
Below A-Level	63.36%	48.55%
A Level and above	37.64%	51.45%
Occupation	n = 9855	n = 820
Manual	19.90%	13.29%
Non-manual	80.10%	86.71%
Breastfeeding intention	n = 11694	n = 890
No	19.68%	10.22%
Maybe	14.19%	12.81%
Yes	66.13%	76.97%
Breastfeeding initiation (ever breastfed)	n = 12035	n = 912
Yes	77.25%	89.58%
No	22.75%	10.42%
Breastfeeding duration (categorised)	n = 10875	n = 887
Never	24.51%	13.19%
Up to 3 months	31.99%	28.18%
Up to 5 months	12.83%	16.35%
6 or more months	30.67%	42.28%
Breastfeeding duration (months)	n = 7862 5.7 (4.5)	n = 754 6.4 (4.4)

648
649
650
651

Table 2 Table showing the associations between DNA methylation and maternal phenotype for fully adjusted EWAS at $p < 1.0 \times 10^{-5}$ across the three EWAS conducted in ALSPAC

probeID	Gene symbol	Maternal BMI			Breastfeeding Initiation			Breastfeeding Duration		
		coef	SE	p-value	coef	SE	p-value	coef	SE	p-value
cg11453712	PHPT1	1.5E-03	2.8E-04	6.9E-08	-2.1E+00	8.9E+00	8.1E-01	2.0E+00	6.7E+00	7.7E-01
cg05698294		3.9E-03	7.6E-04	3.7E-07	9.4E-01	3.4E+00	7.8E-01	1.9E+00	2.5E+00	4.6E-01
cg00831126		3.6E-03	7.3E-04	1.2E-06	-3.1E+00	4.2E+00	4.6E-01	3.2E-01	2.5E+00	9.0E-01
cg00224563	PCCA	-9.8E-05	2.0E-05	1.5E-06	-1.2E+02	1.3E+02	3.7E-01	1.2E+02	9.5E+01	2.2E-01
cg26176206		-8.5E-05	1.8E-05	2.2E-06	-4.3E+01	1.5E+02	7.8E-01	2.2E+01	1.1E+02	8.4E-01
cg11683732	C7orf23	-1.7E-04	3.6E-05	2.2E-06	1.4E+02	8.0E+01	8.8E-02	5.6E+01	5.3E+01	2.9E-01
cg26612230	PDLIM5	-7.0E-04	1.5E-04	2.4E-06	3.1E+01	1.9E+01	1.1E-01	-2.2E+01	1.4E+01	1.1E-01
cg02188190		-3.5E-03	7.5E-04	2.8E-06	4.4E+00	3.3E+00	1.8E-01	-8.9E-01	2.5E+00	7.2E-01
cg08496404	ISOC2	6.3E-04	1.3E-04	3.1E-06	1.9E+01	2.2E+01	3.7E-01	9.2E+00	1.4E+01	5.2E-01
cg20774552		-1.9E-03	4.0E-04	3.9E-06	-1.0E-01	7.3E+00	9.9E-01	3.6E+00	4.7E+00	4.5E-01
cg03869225	TESC	-1.5E-03	3.3E-04	4.6E-06	1.7E+01	7.8E+00	3.0E-02	3.0E+00	5.8E+00	6.1E-01
cg07168556	WFIKKN2	3.2E-03	7.0E-04	4.7E-06	-2.2E+00	4.4E+00	6.2E-01	1.5E+00	2.6E+00	5.8E-01
cg18086243		-3.2E-03	7.0E-04	5.6E-06	-6.5E+00	4.4E+00	1.4E-01	2.0E+00	2.7E+00	4.5E-01
cg04484916	SRRM2	-2.4E-03	5.4E-04	7.1E-06	3.4E+00	4.7E+00	4.7E-01	-1.0E+00	3.5E+00	7.7E-01
cg13546538	CTNNAL1	-1.2E-03	2.7E-04	7.2E-06	-3.0E-01	1.0E+01	9.8E-01	4.5E-01	7.0E+00	9.5E-01
cg01590416	ZNF287	-1.4E-04	3.0E-05	7.9E-06	2.5E+01	8.5E+01	7.7E-01	1.0E+01	6.5E+01	8.8E-01
cg02749148	KLF15	7.4E-04	1.6E-04	8.4E-06	2.0E+01	1.7E+01	2.3E-01	-1.4E+01	1.1E+01	2.2E-01
cg17447014	MYO5A	-8.1E-05	1.8E-05	8.6E-06	2.4E+01	1.5E+02	8.7E-01	1.5E+02	1.0E+02	1.4E-01
cg13503179	FNBP1	2.3E-03	5.2E-04	9.7E-06	-2.9E+00	5.3E+00	5.8E-01	-2.1E+00	3.7E+00	5.8E-01
cg01162104		-9.8E-05	2.2E-05	9.8E-06	1.1E+02	1.3E+02	4.1E-01	1.3E+02	8.7E+01	1.3E-01
cg16311186	RAB19	-2.7E-04	2.3E-04	2.4E-01	7.1E+01	1.5E+01	3.7E-06	-3.6E+00	8.4E+00	6.7E-01
cg00902153	LPP	-1.7E-04	2.5E-04	5.0E-01	-4.5E+01	9.8E+00	4.1E-06	3.6E+00	7.7E+00	6.4E-01
cg08123528	RYBP	-1.1E-03	6.2E-04	8.4E-02	-1.8E+01	4.1E+00	6.6E-06	-3.1E-01	3.0E+00	9.2E-01
cg09009983	FOXP1	3.7E-04	3.4E-04	2.7E-01	-3.4E+01	7.5E+00	7.4E-06	5.2E+00	6.0E+00	3.9E-01
cg26217318	OR51I2	-5.8E-05	3.4E-04	8.6E-01	-3.9E+01	8.8E+00	8.0E-06	-2.1E-01	5.9E+00	9.7E-01
cg23015041	PRAGMIN	5.1E-04	4.2E-04	2.2E-01	2.8E+01	6.4E+00	8.8E-06	-2.0E+00	4.7E+00	6.7E-01
cg03986557	NXN	-8.3E-05	2.4E-04	7.3E-01	-4.6E+00	1.2E+01	6.9E-01	-3.8E+01	8.2E+00	5.0E-06
cg08192143	ZNF286A	3.4E-04	3.7E-04	3.5E-01	7.1E+00	7.2E+00	3.3E-01	-2.3E+01	5.1E+00	5.5E-06
cg12718426	PPP1R12B	2.3E-04	4.6E-04	6.1E-01	7.6E+00	6.5E+00	2.5E-01	1.8E+01	4.1E+00	7.8E-06

652